



COOPERATIVE
STRATEGIES

COMPLETE FINANCIAL & DEMOGRAPHIC PLANNING FOR EDUCATION

**HACIENDA LA PUENTE
UNIFIED SCHOOL DISTRICT**

**TRUSTEE AREA SCENARIOS
POST-MAP PUBLIC HEARING #1**

FEBRUARY 13, 2020



TRUSTEE AREA CONVERSION PROCESS

Date	Activity
January 27, 2020	Board Meeting: First Pre-Map Public Hearing and Presentation
February 3, 2020	Board Meeting: Second Pre-Map Public Hearing
February 13, 2020	Board Meeting: First Public Hearing on Trustee Area Scenarios Public Hearing on SBE Election Waiver Request Board Consideration of SBE Election Waiver Request
February 27, 2020	Board Meeting: Second Public Hearing on Trustee Area Scenarios Board Consideration to Narrow Scenarios
March 12, 2020	Board meeting: Final Public Hearing on Trustee Area Scenarios Board Section of Trustee Area Map Board Consideration of Change in Election Method
April / May 2020	County Committee on School District Organization holds a public hearing and Considers Approval of Change in Election Method and Trustee Area Map
May 2020	State Board of Education Meeting; Waiver Application Consideration
May 2020	Cooperative Strategies sends Final Trustee area Map to the County Registrar of Voters
November 2020	First Election Held Utilizing Trustee Areas



COMMUNITY INPUT OPPORTUNITIES

Date	Meeting Type	Location	Time
Tuesday, February 4, 2020	DELAC/DAC Meeting	Willow Center Multipurpose Room	9 a.m.
Friday, February 7, 2020	CVRA Meeting for Student Groups (LCAP Meeting)	District Office – La Puente Conference Room	10 a.m.
Tuesday, February 18, 2020	Public Input Meeting	Fairgrove Academy Multipurpose Room	6 p.m.
Wednesday, February 19, 2020	Public Input Meeting	Sparks MS Multipurpose Room	6 p.m.
Thursday, February 20, 2020	Public Input Meeting	Wilson HS Media Center	6 p.m.
Friday, February 21, 2020	Public Input Meeting	Palm ES Multipurpose Room	6 p.m.
Saturday, February 22, 2020	Public Input Meeting	District Office – La Puente Conference Room	10 a.m.



MAP DRAWING REQUIREMENTS

Goal is to prevent “Racially Polarized Voting.” (Cal. Elec. Code, §§ 14026-27.) California, Federal, and case law have identified mapping factors. Key laws include California Elections Code § 22000 and Title 52, United States Code § 10301.



Each area shall contain nearly equal number of inhabitants (up to ~10% variance; *White v. Regester*, 412 U.S. 755 (1973))



Follow topography and man-made and natural geographic features, as much as possible



Drawn to comply with the Federal Voting Rights Act



Respect incumbency, if possible; *Bush v. Vera*, (512 U.S. 952 (1996).)



Compact, contiguous, cohesive, and integrity, as much as possible



Other local considerations (i.e., school boundaries, locations of school sites)

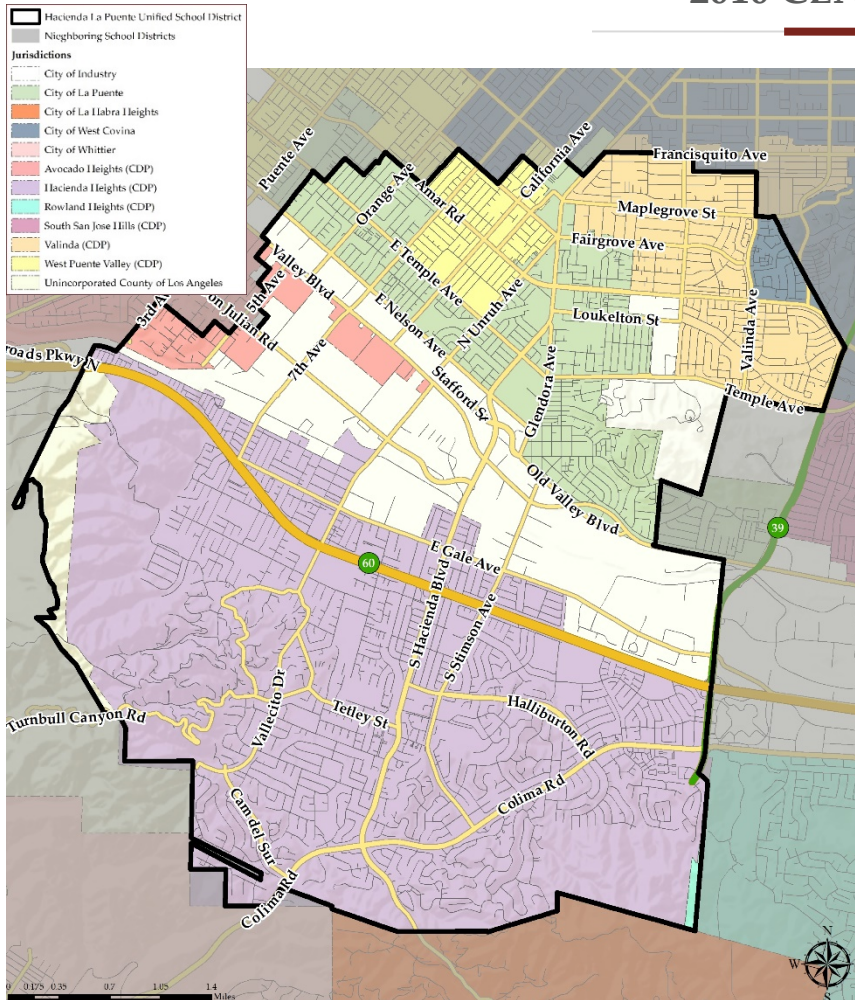


Respect communities of interest, as much as possible



HLPUSD'S DEMOGRAPHICS

2010 CENSUS DATA



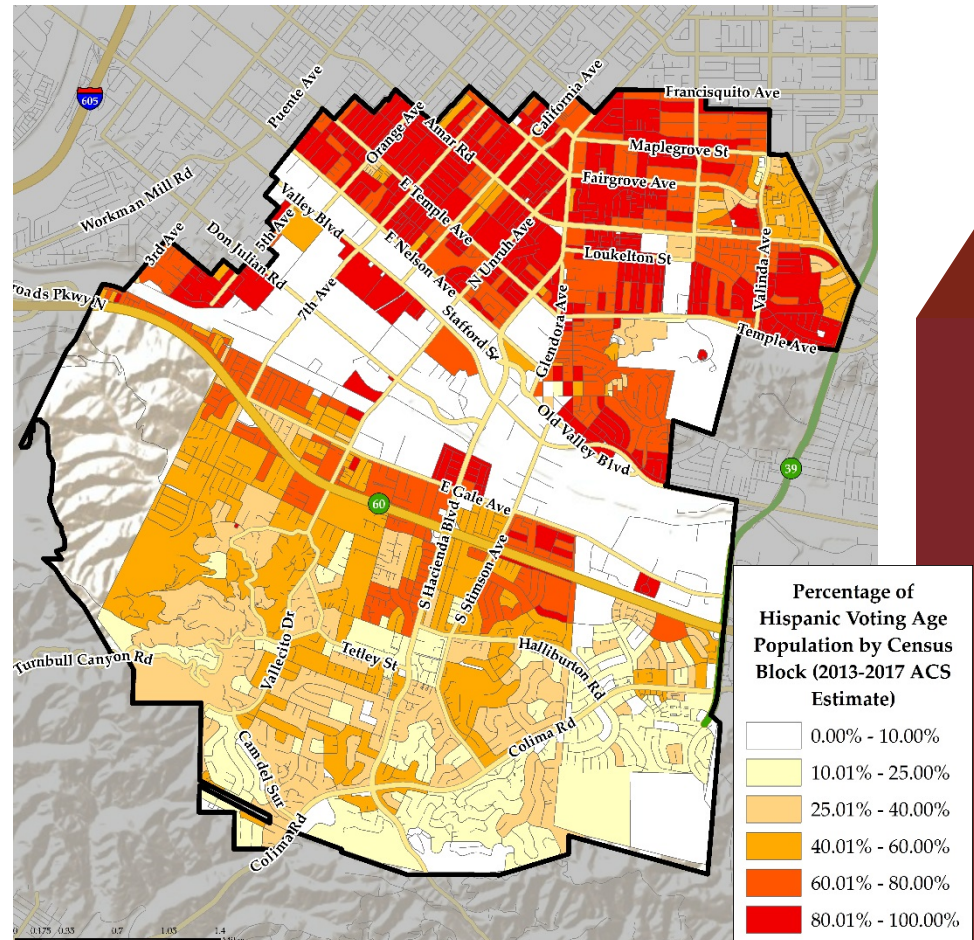
Population	Total Population		Age 18 and over	
	Total	%	Total	%
Hispanic/Latino	75,761	65.03%	52,543	60.50%
White	11,661	10.01%	10,226	11.78%
Black/ African American	1,555	1.33%	1,237	1.42%
American Indian/ Alaska Native	190	0.16%	155	0.18%
Asian	26,032	22.34%	21,770	25.07%
Native Hawaiian/ Pacific Islander	123	0.11%	104	0.12%
Other	143	0.12%	94	0.11%
Two or More Races	1,041	0.89%	715	0.82%
Total Population	116,506	100.00%	86,844	100.00%



HLPUSD'S DEMOGRAPHICS

CITIZEN VOTING AGE POPULATION ESTIMATES

Population	2013-2017 CVAP	
	Total	%
Hispanic/Latino	45,158	59.93%
White	8,783	11.66%
Black/ African American	1,212	1.61%
American Indian/ Alaska Native	204	0.27%
Asian	19,570	25.97%
Native Hawaiian/ Pacific Islander	75	0.10%
Two or More Races	348	0.46%
Total Population	75,350	100.00%

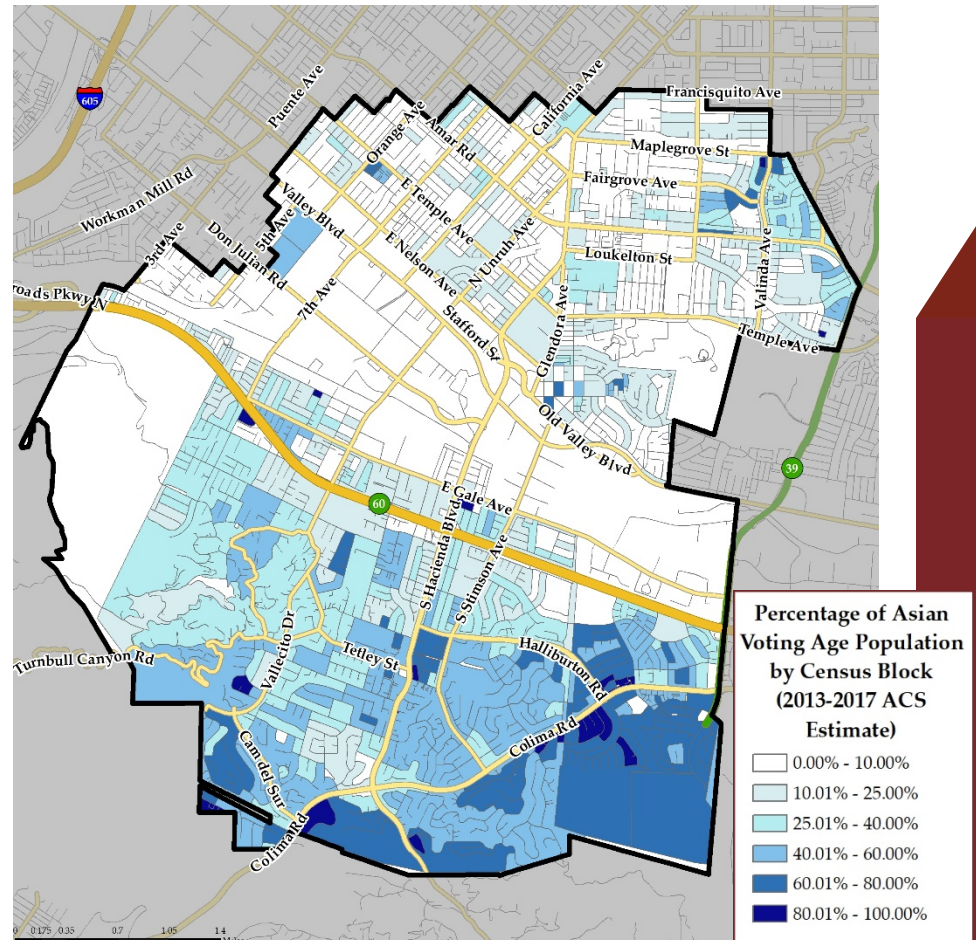




HLPUSD'S DEMOGRAPHICS

CITIZEN VOTING AGE POPULATION ESTIMATES

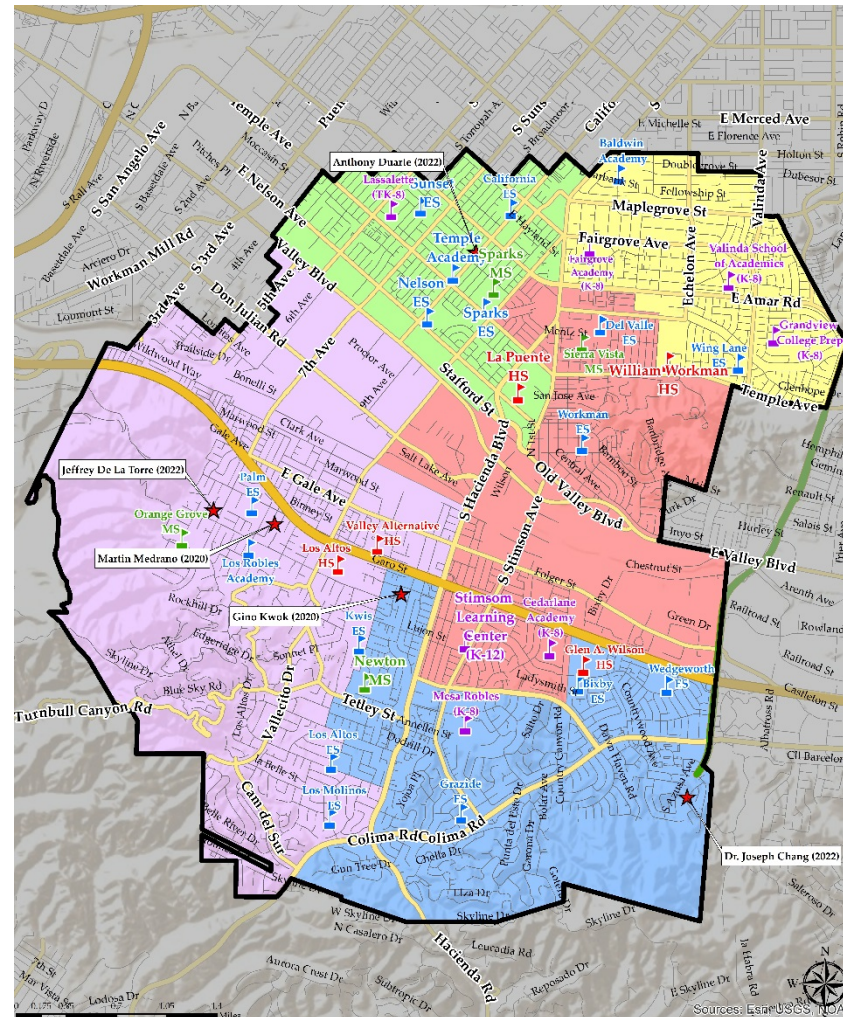
Population	2013-2017 CVAP	
	Total	%
Hispanic/Latino	45,158	59.93%
White	8,783	11.66%
Black/ African American	1,212	1.61%
American Indian/ Alaska Native	204	0.27%
Asian	19,570	25.97%
Native Hawaiian/ Pacific Islander	75	0.10%
Two or More Races	348	0.46%
Total Population	75,350	100.00%





CONCEPTUAL TRUSTEE AREAS

SCENARIO 1





DEMOGRAPHICS

SCENARIO 1

TRUSTEE AREA	Trustee Area 1		Trustee Area 2		Trustee Area 3		Trustee Area 4		Trustee Area 5	
TP* vs. CVAP**	TP	CVAP	TP	CVAP	TP	CVAP	TP	CVAP	TP	CVAP
Population	23,589	14,779	23,290	13,489	22,454	14,009	24,649	17,026	22,524	16,047
Population Variance	288	-291	-11	-1,581	-847	-1,061	1,348	1,956	-777	977
	1.24%	-1.93%	-0.05%	-10.49%	-3.64%	-7.04%	5.78%	12.98%	-3.34%	6.48%
Hispanic/Latino	18,081	10,683	20,284	11,071	16,873	10,251	7,933	4,959	12,590	8,194
	76.65%	72.28%	87.09%	82.07%	75.14%	73.17%	32.18%	29.13%	55.90%	51.06%
White	1,539	1,018	1,082	767	1,746	1,163	3,578	2,821	3,716	3,014
	6.52%	6.89%	4.65%	5.69%	7.78%	8.30%	14.52%	16.57%	16.50%	18.78%
Black/African American	440	247	255	296	289	196	306	198	265	275
	1.87%	1.67%	1.09%	2.19%	1.29%	1.40%	1.24%	1.16%	1.18%	1.71%
American Indian/ Alaska Native	50	69	49	25	51	30	16	47	24	33
	0.21%	0.47%	0.21%	0.19%	0.23%	0.21%	0.06%	0.28%	0.11%	0.21%
Asian	3,239	2,656	1,467	1,302	3,289	2,239	12,394	8,910	5,643	4,463
	13.73%	17.97%	6.30%	9.65%	14.65%	15.98%	50.28%	52.33%	25.05%	27.81%
Native Hawaiian/Other Pacific Islander	31	43	13	1	20	6	41	10	18	15
	0.13%	0.29%	0.06%	0.01%	0.09%	0.04%	0.17%	0.06%	0.08%	0.09%
Other	40	0	22	0	25	0	29	0	27	0
	0.17%	0.00%	0.09%	0.00%	0.11%	0.00%	0.12%	0.00%	0.12%	0.00%
Two or More Races	169	63	118	27	161	124	352	81	241	53
	0.72%	0.43%	0.51%	0.20%	0.72%	0.89%	1.43%	0.48%	1.07%	0.33%

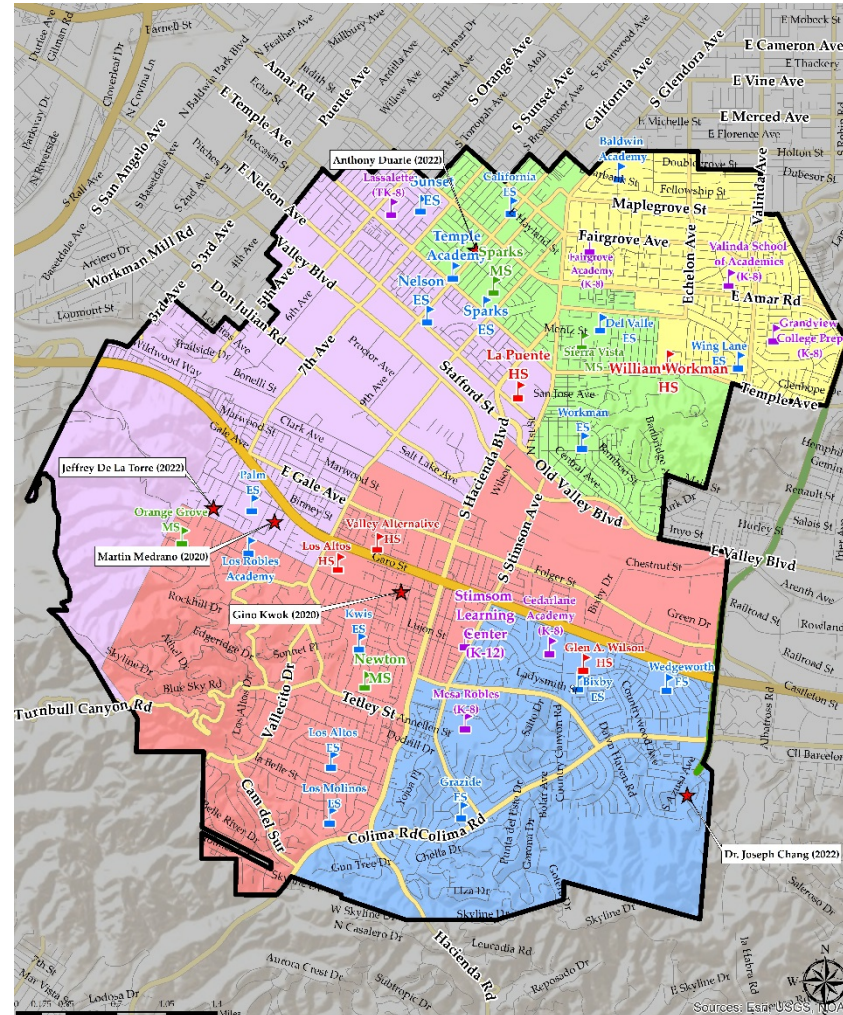
*TP: Total Population

**CVAP: Citizen Voting Age Population



CONCEPTUAL TRUSTEE AREAS

SCENARIO 2





DEMOGRAPHICS

SCENARIO 2

TRUSTEE AREA	Trustee Area 1		Trustee Area 2		Trustee Area 3		Trustee Area 4		Trustee Area 5	
TP* vs. CVAP**	TP	CVAP	TP	CVAP	TP	CVAP	TP	CVAP	TP	CVAP
Population	23,591	14,780	24,094	14,384	23,703	15,852	22,457	15,961	22,661	14,373
Population Variance	290	-290	793	-686	402	782	-844	891	-640	-697
	1.24%	-1.92%	3.40%	-4.55%	1.72%	5.19%	-3.62%	5.91%	-2.75%	-4.63%
Hispanic/Latino	18,083	10,684	20,031	11,466	12,408	7,517	7,015	4,939	18,224	10,552
	76.65%	72.29%	83.14%	79.71%	52.35%	47.42%	31.24%	30.94%	80.42%	73.42%
White	1,539	1,018	1,365	919	3,718	2,989	3,211	2,371	1,828	1,486
	6.52%	6.89%	5.67%	6.39%	15.69%	18.86%	14.30%	14.85%	8.07%	10.34%
Black/African American	440	247	382	380	236	135	295	224	202	226
	1.87%	1.67%	1.59%	2.64%	1.00%	0.85%	1.31%	1.40%	0.89%	1.57%
American Indian/ Alaska Native	50	69	37	55	34	29	25	47	44	4
	0.21%	0.47%	0.15%	0.38%	0.14%	0.18%	0.11%	0.29%	0.19%	0.03%
Asian	3,239	2,656	2,106	1,478	6,963	5,120	11,542	8,257	2,182	2,059
	13.73%	17.97%	8.74%	10.28%	29.38%	32.30%	51.40%	51.73%	9.63%	14.33%
Native Hawaiian/Other Pacific Islander	31	43	19	7	38	15	20	10	15	0
	0.13%	0.29%	0.08%	0.05%	0.16%	0.09%	0.09%	0.06%	0.07%	0.00%
Other	40	0	13	0	30	0	27	0	33	0
	0.17%	0.00%	0.05%	0.00%	0.13%	0.00%	0.12%	0.00%	0.15%	0.00%
Two or More Races	169	63	141	79	276	47	322	113	133	46
	0.72%	0.43%	0.59%	0.55%	1.16%	0.30%	1.43%	0.71%	0.59%	0.32%

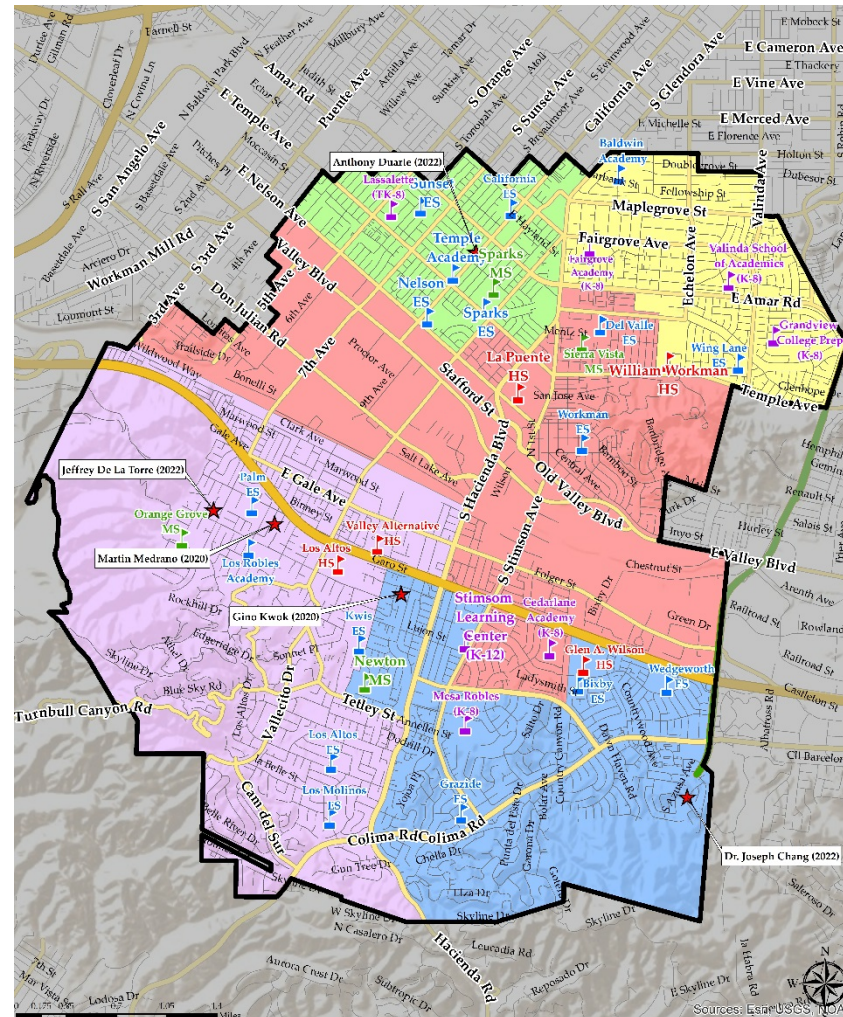
*TP: Total Population

**CVAP: Citizen Voting Age Population



CONCEPTUAL TRUSTEE AREAS

SCENARIO 3





DEMOGRAPHICS

SCENARIO 3

TRUSTEE AREA	Trustee Area 1		Trustee Area 2		Trustee Area 3		Trustee Area 4		Trustee Area 5	
TP* vs. CVAP**	TP	CVAP	TP	CVAP	TP	CVAP	TP	CVAP	TP	CVAP
Population	23,589	14,781	23,137	13,096	22,460	14,311	23,527	16,319	23,793	16,843
Population Variance	288	-289	-164	-1,974	-841	-759	226	1,249	492	1,773
	1.24%	-1.92%	-0.70%	-13.10%	-3.61%	-5.04%	0.97%	8.29%	2.11%	11.77%
Hispanic/Latino	18,081	10,683	20,155	10,811	17,449	10,790	7,675	4,875	12,401	7,999
	76.65%	72.28%	87.11%	82.55%	77.69%	75.40%	32.62%	29.87%	52.12%	47.49%
White	1,539	1,018	1,056	664	1,643	1,191	3,374	2,670	4,049	3,240
	6.52%	6.89%	4.56%	5.07%	7.32%	8.32%	14.34%	16.36%	17.02%	19.24%
Black/African American	440	247	271	341	255	147	268	188	321	289
	1.87%	1.67%	1.17%	2.60%	1.14%	1.03%	1.14%	1.15%	1.35%	1.72%
American Indian/ Alaska Native	50	69	47	25	54	30	20	47	19	33
	0.21%	0.47%	0.20%	0.19%	0.24%	0.21%	0.09%	0.29%	0.08%	0.20%
Asian	3,239	2,656	1,450	1,227	2,881	2,040	11,788	8,433	6,674	5,214
	13.73%	17.97%	6.27%	9.37%	12.83%	14.25%	50.10%	51.68%	28.05%	30.96%
Native Hawaiian/Other Pacific Islander	31	45	12	1	20	4	40	10	20	15
	0.13%	0.30%	0.05%	0.01%	0.09%	0.03%	0.17%	0.06%	0.08%	0.09%
Other	40	0	24	0	19	0	29	0	31	0
	0.17%	0.00%	0.10%	0.00%	0.08%	0.00%	0.12%	0.00%	0.13%	0.00%
Two or More Races	169	63	122	27	139	109	333	96	278	53
	0.72%	0.43%	0.53%	0.21%	0.62%	0.76%	1.42%	0.59%	1.17%	0.31%

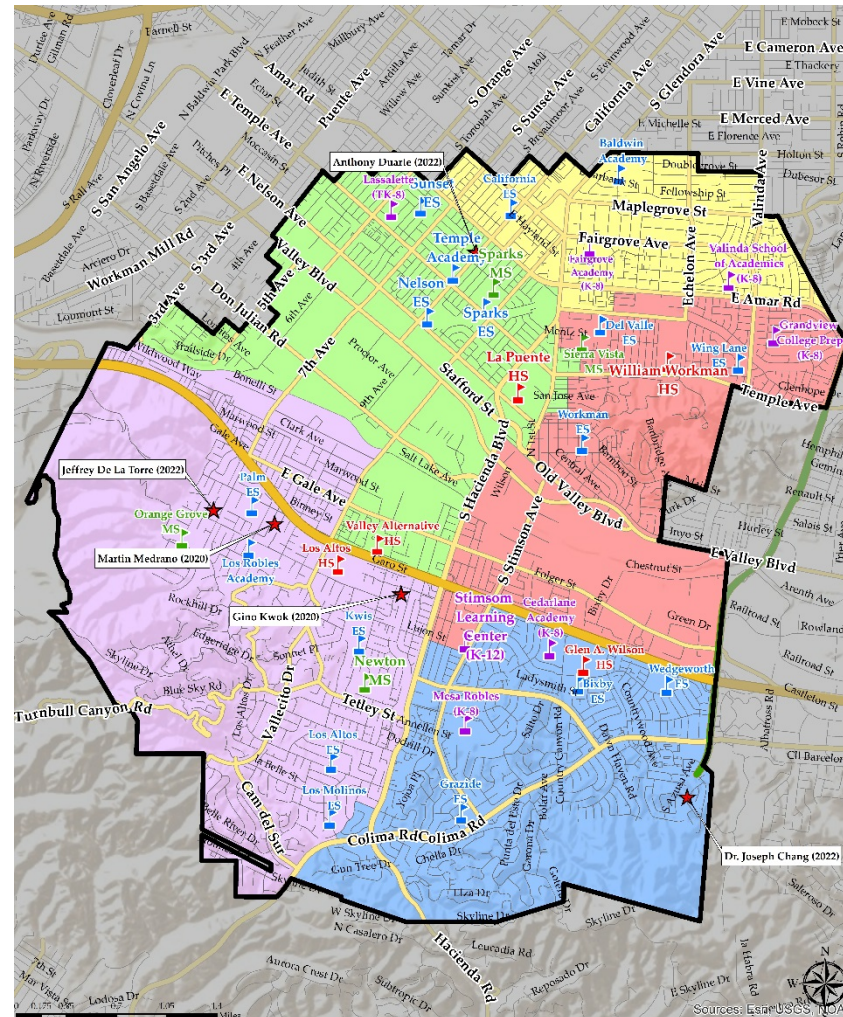
*TP: Total Population

**CVAP: Citizen Voting Age Population



CONCEPTUAL TRUSTEE AREAS

SCENARIO 4





DEMOGRAPHICS

SCENARIO 4

TRUSTEE AREA	Trustee Area 1		Trustee Area 2		Trustee Area 3		Trustee Area 4		Trustee Area 5	
TP* vs. CVAP**	TP	CVAP	TP	CVAP	TP	CVAP	TP	CVAP	TP	CVAP
Population	22,919	13,470	23,474	13,732	22,676	14,574	23,373	16,552	24,064	17,022
Population Variance	-382	-1,600	173	-1,338	-625	-496	72	1,482	763	1,952
	-1.64%	-10.62%	0.74%	-8.88%	-2.68%	-3.29%	0.31%	9.83%	3.27%	12.95%
Hispanic/Latino	17,902	9,986	20,324	11,081	17,730	10,916	7,380	5,173	12,425	8,002
	78.11%	74.14%	86.58%	80.69%	78.19%	74.90%	31.57%	31.25%	51.63%	47.01%
White	1,388	858	1,189	873	1,598	1,157	3,393	2,504	4,093	3,391
	6.06%	6.37%	5.07%	6.36%	7.05%	7.94%	14.52%	15.13%	17.01%	19.92%
Black/African American	435	336	186	271	329	119	311	233	294	253
	1.90%	2.49%	0.79%	1.97%	1.45%	0.82%	1.33%	1.41%	1.22%	1.49%
American Indian/ Alaska Native	40	26	43	25	59	77	25	47	23	29
	0.17%	0.19%	0.18%	0.18%	0.26%	0.53%	0.11%	0.28%	0.10%	0.17%
Asian	2,928	2,184	1,572	1,440	2,747	2,189	11,878	8,451	6,907	5,306
	12.78%	16.21%	6.70%	10.49%	12.11%	15.02%	50.82%	51.06%	28.70%	31.17%
Native Hawaiian/Other Pacific Islander	22	46	13	0	31	4	21	25	36	0
	0.10%	0.34%	0.06%	0.00%	0.14%	0.03%	0.09%	0.15%	0.15%	0.00%
Other	21	0	31	0	34	0	31	0	26	0
	0.09%	0.00%	0.13%	0.00%	0.15%	0.00%	0.13%	0.00%	0.11%	0.00%
Two or More Races	183	34	116	42	148	112	334	119	260	41
	0.80%	0.25%	0.49%	0.31%	0.65%	0.77%	1.43%	0.72%	1.08%	0.24%

*TP: Total Population

**CVAP: Citizen Voting Age Population



QUESTIONS