

CELEBRATIONS

ACHIEVEMENT, COMMITMENT, EXCELLENCE

Hacienda La Puente Unified School District

Board of Education Meeting

December 15, 2020



CONDITIONS OF LEARNING





Sam Higbee



Rosalie Sinapi



Dr. Alfonso Jimenez



Dr. Judy Fancher



Marissa Blessum



Perla Granados

Hacienda La Puente USD Participants
UC Davis C-STEM Conference December 7-10, 2020



Connie Sandoval



Veronica Sanchez



Catharine Ouellette



Lacey Kile



Wendy Wilson



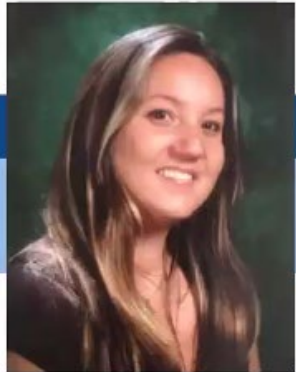
Teresa Magpayo Castro

The 10th Annual Conference on
Integrated Computing and STEM Education

UCDAVIS
C-STEM Center

C-STEM

2020 Teachers and Administrators of the Year Awards



Aline Millard

Fairgrove Academy, Hacienda
Puente Unified School District



Wendy Wilson

Valinda School of Academics,
Hacienda La Puente Unified School
District



Dr. Judy Fancher

Assistant Superintendent, Hacienda La
Puente Unified School District



MTSS SITE TEAM PLANNING MEETINGS

Student & Family
Services/Equity Access
facilitates planning meetings on
strategies to keep students:

ENGAGED PARTICIPATING CONNECTED

Targeted Students & Supports (Tier II)

Sub Groups:

- ELs
- SPED
- McKinney Vento
- Foster
- Low-Performing
- Attendance



- ❖ Push-in to Study Skills (RSP) and ELD electives

❖ Motivational Monday:

- meet with target students for 1 hour after Motivational Monday
- Help them create their unique self-paced learning schedule (HW Club and Office Hours)
- Review and front load assignments for the week
- Teach Study Skills



Instructional Aide Series
 Presented by
 HLPUSD Captain representative Nick Cortez

C.A.P.T.A.I.N PRESENTS

**EVIDENCE
 BASED
 PRACTICES**



**TO SUPPORT STUDENTS AFFECTED BY AUTISM
 SPECTRUM DISORDER DURING DISTANCE LEARNING**

December 7, 2020 INTRODUCTION TO C.A.P.T.A.I.N. & EBPs

January 11, 2021 VISUAL SUPPORTS

February 1, 2021 PROMPTING

March 8, 2021 REINFORCEMENT

DETAILS:
 THIS WILL BE A SERIES OF TRAININGS ON EVIDENCE
 BASED PRACTICES THAT ARE PROVEN TO SUPPORT
 STUDENTS WITH AUTISM AND WILL TOUCH ON HOW
 THESE STRATEGIES CAN BE USED AT HOME

TIME:
 1:00-2:00 PM

CONTACT: NICK CORTEZ
 CAPTAIN LOCAL INTERAGENCY COLLABORATIVE
 (CLIC) CADRE MEMBER



E-MAIL: NCORTEZ@HLPUSD.K12.CA.US

Zoom Link: Please check your email for link. All trainings will be from 1:00-2:00 PM.

A History of Systematic Reviews of the Literature for Evidence Based Practices (EBPs)

- In 2015, 14 Established Interventions Under Age 22
 1 Established Intervention Age 22+
- 2nd review conducted by National Standards Project, National Autism Center, Phase 2 (NSP2)
- Reviewed studies published in peer reviewed journals between 2007 and February of 2012
 - 351 articles (ages 0-22) and 27 articles (ages 22+)
 - included studies if the interventions could be implemented in or by school systems, early intervention, home, hospital, vocational, and/or community-based programs or in clinic settings

www.nationalautismcenter.org

 www.captain.ca.gov 

Student Support Network

December 10, 2020

Guest Speaker
Jenica Morin-Pascual
YWCA in San Gabriel Valley

Topic:
Domestic Violence
Awareness

47 Participants

- Counselors
- Administrators
- Resource Teachers

Student and Family Services-Equity Access

The image shows a Zoom meeting interface. On the left, a PowerPoint presentation titled "Cycle of Violence" is displayed. The slide features a circular diagram with four stages: HONEYMOON, TENSION BUILDING, DENIAL, and ACUTE EXPLOSION. Each stage includes a list of characteristics and behaviors. The right side of the screen shows a grid of 16 participant video feeds. The participants are: ryan ramos, Cynthia Cabello, Jenica Morin-Pascual, Theresa Lei, Maya Picado, Lorraine Ortega, Loretta Guzman, Ms. Calderon, Mary Castner, crojas-admin, Irene Perez, Joseph Gomez, Andrea Larios, Patti Higgins, Eric Lopez, Lilia Picado, Angeles, Bernadette Co..., jzepeda@hlpus..., Joaquin Marti..., Tram Hoang, Eva Munoz-Fr..., sharrington, and Vanessa Ortiz. A large blue 'V' logo is visible in the bottom right corner of the grid.



FOOD SERVICES

FREE!

**January 5 - End of School Year!
Breakfast & Lunch
Snack & Supper**

Meals Served:

- Breakfast 318,178
- Lunch 318,308
- Snack 237,834
- Supper 238,274
- TOTAL: 1,112,594**

FFVP Tasting served:

25,655

Next FFVP pick up Tue, 12/15/2020



FRESH FRUIT
& VEGETABLE
PROGRAM
**DECEMBER
2020**

M	T	W	T	F
	1 Persimmon	2 Pink Lucy Apples	3 Gold Kiao	4
7	8 Asian Pear	9 Kumquat	10 Persimmon	11
14	15 Navel Orange	16 Christmas Gift Apples	17 Purple Sweet Potatoes	18
21	22	23	24	25
28	29	30	31	

Happy Holidays


FFVP is a grant program based upon need that allows students to enjoy fresh fruits and vegetables. Using produce from local growers can assist their health, eating a diet rich in fruits and vegetables is good for you.



STUDENT OUTCOMES



GLEN A. WILSON HIGH SCHOOL



Cynthia Wen Every Student Succeeding HLPUSD Recipient

Junior
5 AP Classes
Biomedical Science Pathway





Workman Alumni Speaker Series



The Speaker Series is sponsored and conducted by Mrs. Garcia and her AP Literature students. The Alumni Speaker Series has allowed students to interact with successful former Lobos and give them positive role models so they can aspire to fulfill their own dreams.

LOBO CLASS OF 1989



ROYCE ROYBAL

- ATTENDED SDSU AND MAJORED IN CHICANO STUDIES
- DEPUTY EXECUTIVE DIRECTOR FOR THE LGBTQ+ NATIONAL TASK FORCE
- CHIEF OFFICER FOR SAN FRANCISCO AIDS FOUNDATION

LOBO CLASS OF 1990



DR. ESTEBAN LOPEZ

- MEDICAL DEGREE FROM THE UNIVERSITY OF MICHIGAN
- MBA FROM UNIVERSITY OF TEXAS
- HEAD OF PEDIATRICS (AUSTIN, TEXAS)
- CHIEF DIRECTOR FOR BLUE SHIELD
- APPEARED ON NOTICIAS TELEMUNDO AND TEDxTALKS

LOBO CLASS OF 2006



DAVID CASTANEDA

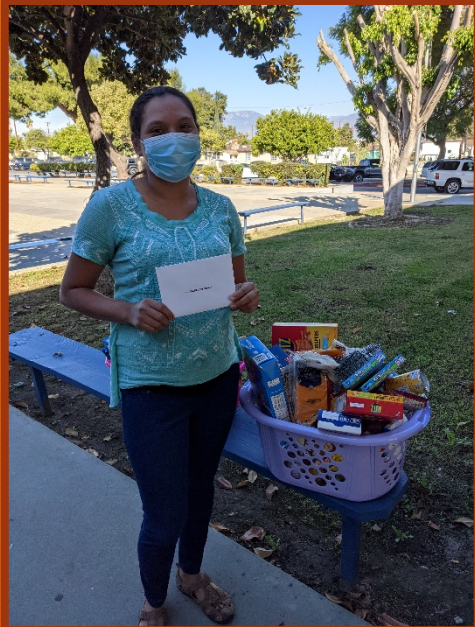
- MAJORED IN CIVIC ENGINEERING, FILM PRODUCTION AND INTERNATIONAL BUSINESS AT CSUF
- ACTOR, WHO IS CURRENTLY STARRING IN THE NETFLIX HIT "THE UMBRELLA ACADEMY" AS DIEGO HARGREEVES

PARENT & FAMILY ENGAGEMENT



Thanksgiving Holiday Event

Thank you Servants Arms for your generous donation to 5 families in our district and for sharing the joy of Thanksgiving.



2020-21 LCAP Survey

Now Open!



- Survey for Staff, Parents, grade 7-12 Students
- Available on any device (online, smart-phone)
- Select language preference: English, Spanish or Chinese
- The Survey will assist the District to continue to establish priorities and develop programs that best serve our students

LCAP Survey Links:

<https://www.hlpschools.org/>

Group	Survey Links
Staff	https://link.edgepilot.com/s/bf97c887/KnHBAq9YrECPn58I1WhVOw?u=https://hanover-research.qualtrics.com/jfe/form/SV_e9yNwNo1LRiN7yB?Group=Staff
Parents	https://link.edgepilot.com/s/cae99e00/DGCsqmoRWUCbUXOz6S9I3g?u=https://hanover-research.qualtrics.com/jfe/form/SV_e9yNwNo1LRiN7yB?Group=Parent
Students	https://link.edgepilot.com/s/5f87665f/JdAi7_oMM06qfHhBss_lVw?u=https://hanover-research.qualtrics.com/jfe/form/SV_e9yNwNo1LRiN7yB?Group=Student



THANK YOU

