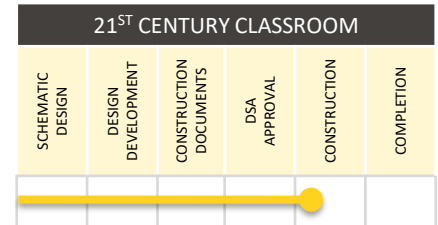
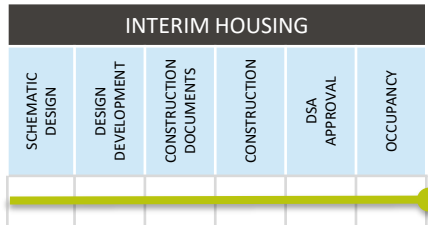




21<sup>st</sup> CENTURY CLASSROOM IMPROVEMENTS | PHASES 1 & 2  
**BOND UPDATES**  
December 15, 2020

# PROJECT STATUS

## MESA ROBLES SCHOOL



### NOTES:

DSA APPROVAL **100%**

**10%**

- Interim Classrooms
  - Final DSA certifications underway
  - Ready for move in
- 21st Century Classroom
- NTP issued October 19
  - Demolition Complete
  - Site and Interior Demo Complete
  - Hazmat Abatement Complete
  - Finish Installation and Plumbing Underway



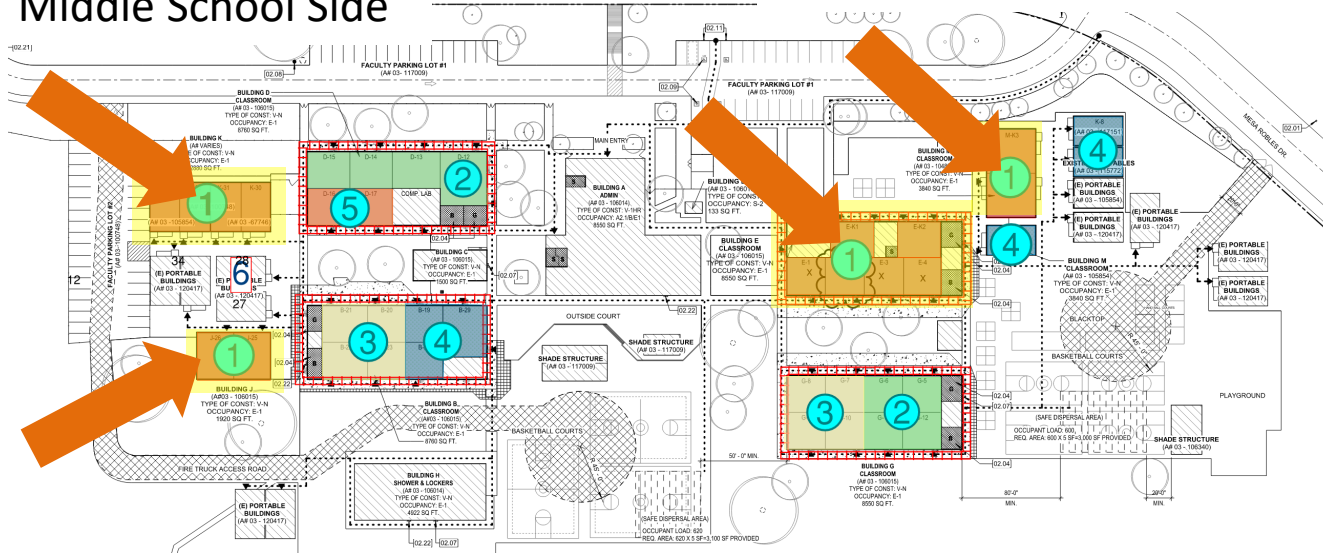
# Interim Housing

## MESA ROBLES SCHOOL

### PHASING PLAN

#### Middle School Side

#### Elementary School Side



#### CONSTRUCTION PHASE 1

Phase 1, 6 CR Middle School Side J-25, J-26 and K-30 to K-33

10/19/2020 - 01/12/2021

Phase 1, 4 CR: E-1 through E-4

10/19/2020 - 01/12/2021

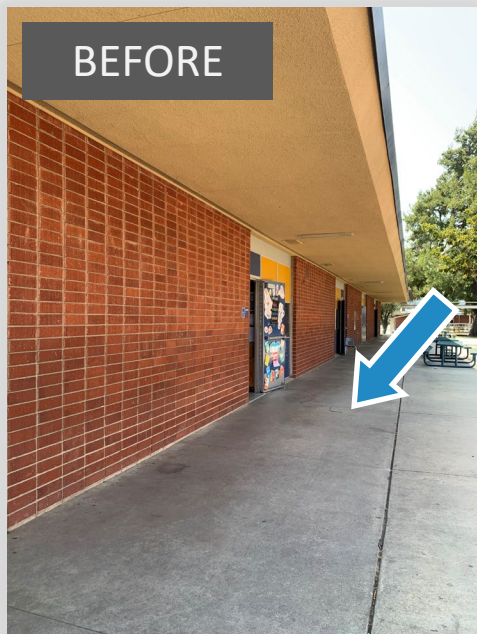
Phase 1, 4 CR: E-K1, E-K2, M-K3, M-K4

10/19/2020 - 12/18/2021

# 21<sup>st</sup> CENTURY CLASSROOM IMPROVEMENTS

## MESA ROBLES SCHOOL

### ADA ACCESS IMPROVEMENTS



### PATH OF TRAVEL IMPROVEMENTS



# 21<sup>st</sup> CENTURY CLASSROOM IMPROVEMENTS

## MESA ROBLES SCHOOL



INTERIOR DEMOLITION

# 21<sup>st</sup> CENTURY CLASSROOM IMPROVEMENTS

## MESA ROBLES SCHOOL

### IMPROVEMENTS UNDERWAY



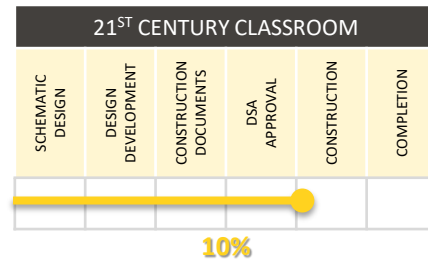
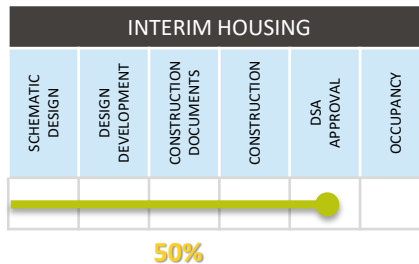
FINISH MATERIALS INSTALL



CLASSROOM TRANSFORMATIONS AFTER DEMO

## PROJECT STATUS

# CEDARLANE ACADEMY



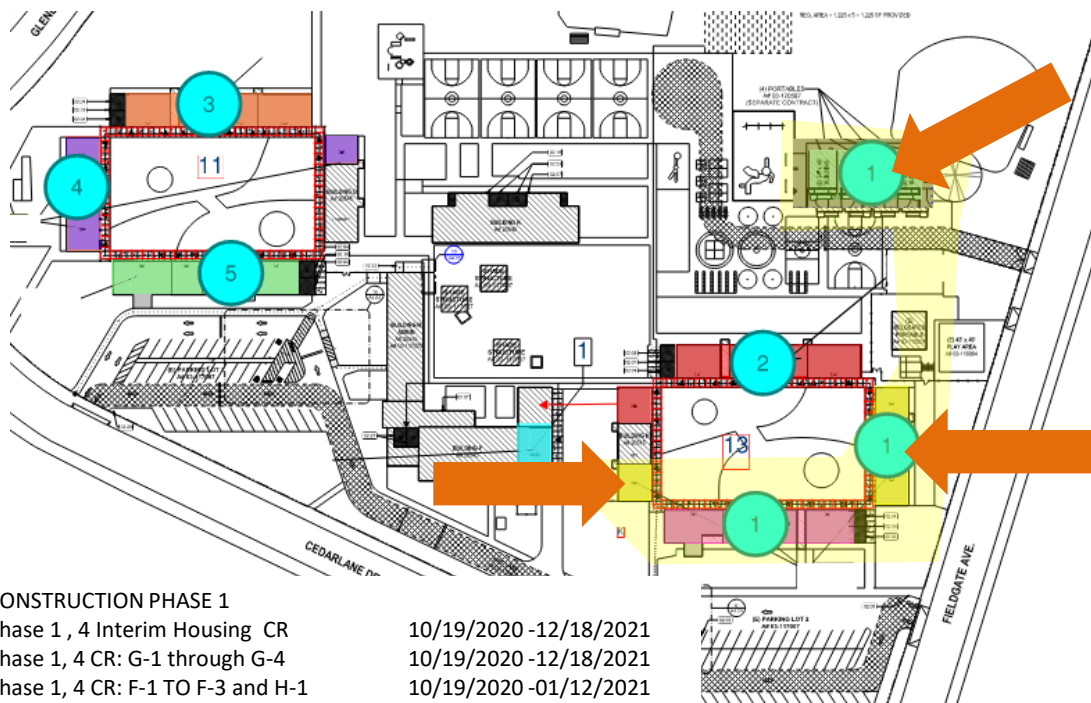
### NOTES:

- DSA Approved
- N.T.P. October 19
- Demolition East Courtyard
  - Site East Court Complete
  - Interior East Court Complete
- Installation of Finishes Underway

# PROJECT STATUS

## CEDARLANE ACADEMY

### START PHASING PLAN & INTERIM HOUSING





PROJECT STATUS

# CEDARLANE ACADEMY

## SITE IMPROVEMENTS CONCRETE WALK



## PATH OF TRAVEL IMPROVEMENTS

PROJECT STATUS

# CEDARLANE ACADEMY

## 21<sup>ST</sup> CENTURY CLASSROOM IMPROVEMENTS



PHASE 1 ABATEMENT COMPLETE - DEMO COMPLETE

## PROJECT STATUS

# CEDARLANE INTERIM HOUSING

## SITE IMPROVEMENTS



## GRADING, DEMO AND BUILDING PADS



PROJECT STATUS

# CEDARLANE INTERIM HOUSING

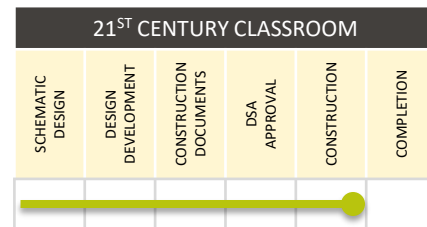
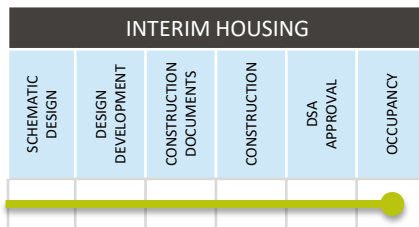
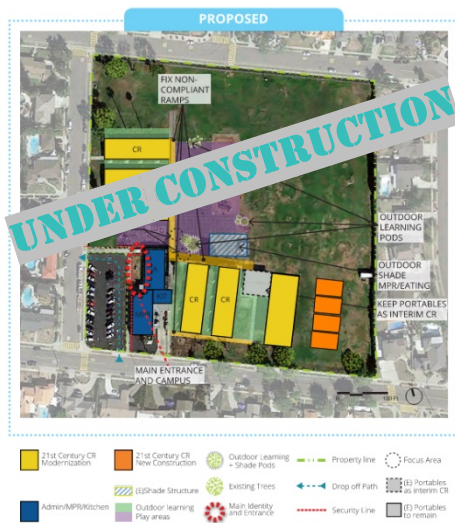
## SITE IMPROVEMENTS



## BUILDINGS DELIVERED & SET

## PROJECT STATUS

# LOS ALTOS ELEMENTARY SCHOOL



93%

## NOTES:

- Interim Housing Project is 100% complete
- 21<sup>st</sup> Century Walkways Complete
  - Access Ramp Roughed-in and Awaiting Concrete Placement
  - Phase 1 Punch List Generated: Corrections in Progress
  - Phase 2 & 3 Substantial Completion 12/18/20
  - Finish Plumbing and Electrical; Low Voltage In Progress
  - Finishes Completed



PROJECT STATUS

# LOS ALTOS ELEMENTARY SCHOOL

## CLASSROOM INTERIORS



COMPLETED RELOCATABLE CLASSROOMS

PROJECT STATUS

# LOS ALTOS ELEMENTARY SCHOOL

## CLASSROOM LIGHTING AND FIRE ALARM BY UNIT COST PROVIDERS



EXISTING LIGHTING REMOVAL



LIGHTING DEMO COMPLETE

PROJECT STATUS

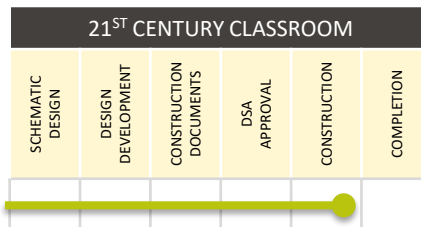
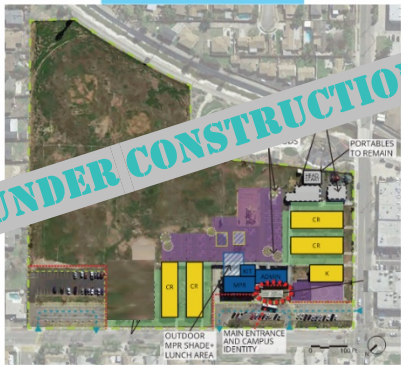
# LOS ALTOS ELEMENTARY SCHOOL

## CLASSROOM INTERIORS



UNIT COST PROVIDER PROJECTS DOVE TAILING – CEILING TILE

# NELSON ELEMENTARY SCHOOL



93%

NOTES:

- 21<sup>st</sup> Century Classroom Improvements Construction
- Notice to Proceed on 6-8-20
- Phase 1 Punch List Issued By Architect
- Construction Phases 2 and 3 Substantially Complete 12/18/20
- Site Concrete Completed
- Lighting and Fire Alarm Began Last Week by Unit Cost Service Providers

PROJECT STATUS

# NELSON ELEMENTARY SCHOOL

SITE WORK COMPLETE

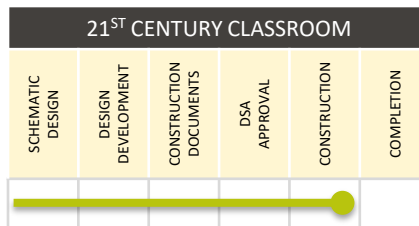
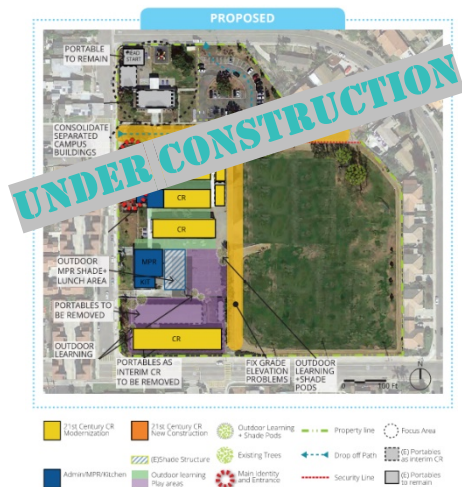


SITE WORK SUBSTANTIALLY COMPLETE



## PROJECT STATUS

# WORKMAN ELEMENTARY SCHOOL



97%

## NOTES:

- 21<sup>st</sup> Century Classroom Improvements Started Construction 6-15-2020; Construction Phases 2 & 3 Substantially Complete 12/18/20
- Site Work Paving Installation Completed
- Electrical Rough-in 95% Complete; Finish Electrical 85% Complete
- Plumbing Rough-in Complete, Casework Fabrication Complete Installed Countertops in Fabrication.

PROJECT STATUS

# WORKMAN ELEMENTARY SCHOOL

## CONSTRUCTION PHASES 2 & 3

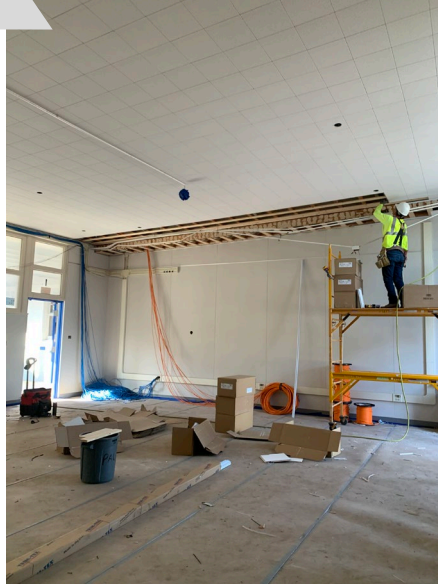
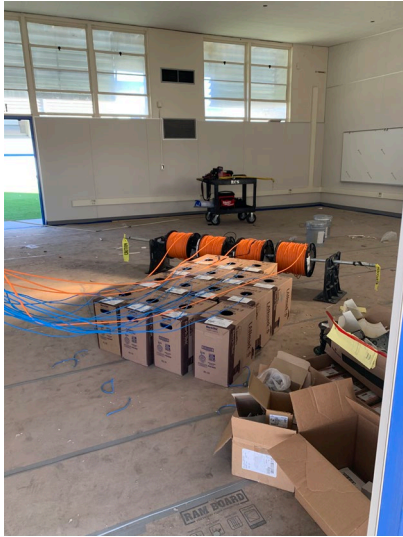


NEW DRAINAGE, PAVING AND SURFACE FLOW LINE

PROJECT STATUS

# WORKMAN ELEMENTARY SCHOOL

## PHASES 1 THROUGH 3

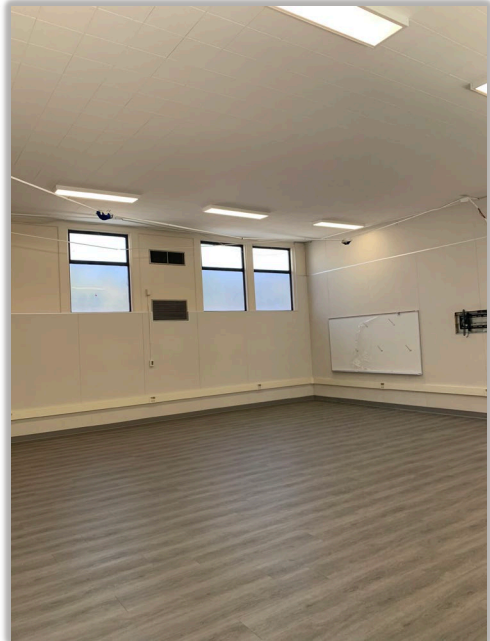


FINISH ELECTRICAL AND DATA INSTALLING

PROJECT STATUS

# WORKMAN ELEMENTARY SCHOOL

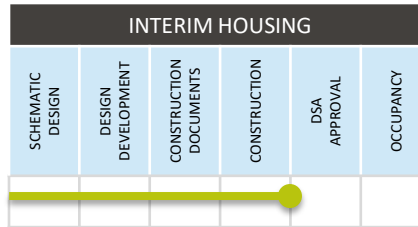
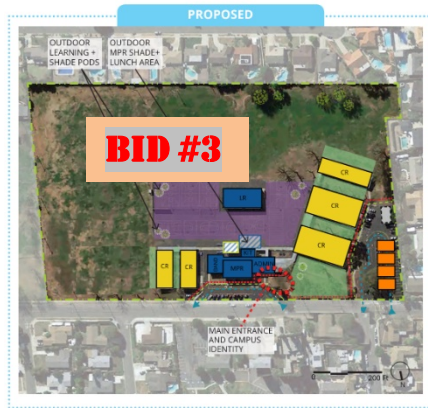
## CLASSROOM IMPROVEMENTS



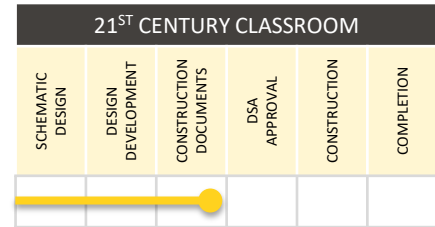
COMPLETED FINISHES

# PROJECT STATUS

## NEWTON MIDDLE SCHOOL



90%



95%

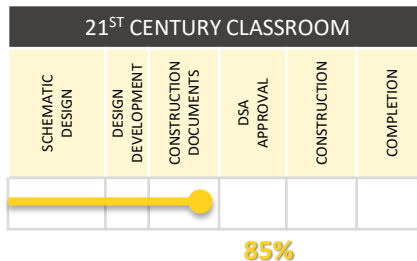
### NOTES:

- Interim Housing Construction Documents are DSA approved
- Temp power installation complete
- DSA Project Inspector assigned
- 21<sup>ST</sup> Century Classroom Improvements
  - Cumming Review Completed October 16, 2020
  - Architect Returned to District November 4, 2020
- DSA Prior Applications are Certified



## PROJECT STATUS

# GRANDVIEW ACADEMY

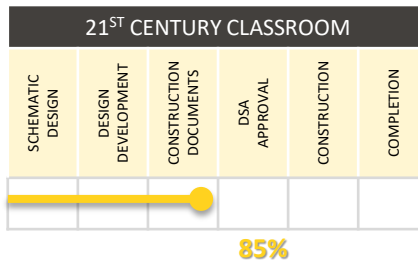


## NOTES:

- 21<sup>st</sup> Century Classroom Project Construction Documents are 85% complete
- DSA Submittal Anticipated After Cumming and District Review.
- DSA Prior Applications for Grandview are All Closed with Certification

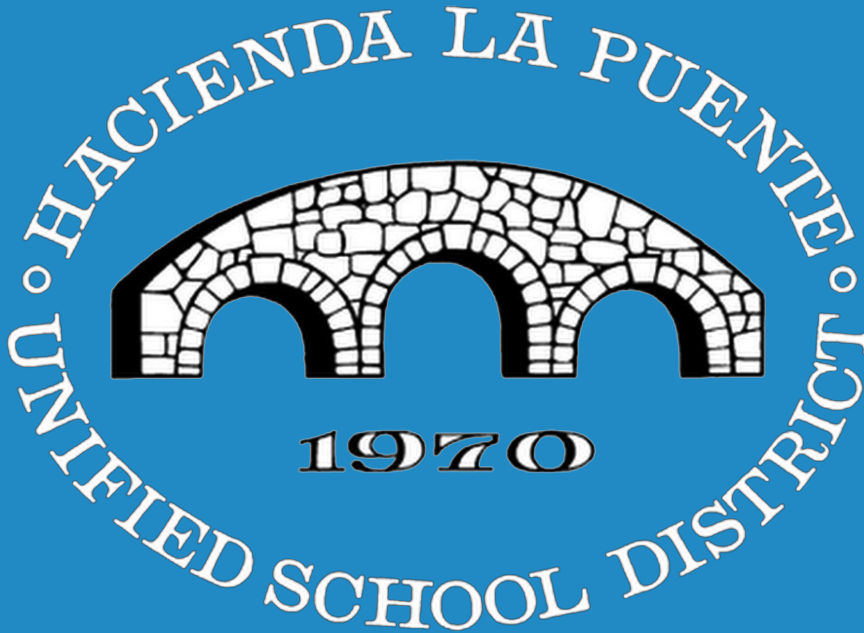
# PROJECT STATUS

## SPARKS MIDDLE SCHOOL



### NOTES:

- Construction Documents for the 21<sup>st</sup> Century Classroom Improvements are 85% complete
- DSA Submittal Anticipated January After Cumming and District Review.
- DSA Prior Applications for Sparks are All Closed with Certification



**QUESTIONS & ANSWERS**