



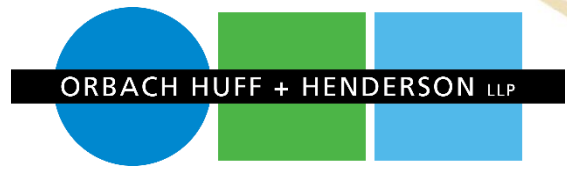
▶ **TRUSTEE AREA  
SCENARIOS**

HACIENDA LA PUENTE UNIFIED  
SCHOOL DISTRICT

**JANUARY 13, 2022**



**COOPERATIVE  
STRATEGIES**  
ASSESS • PLAN • FUND • BUILD



ORBACH HUFF + HENDERSON LLP

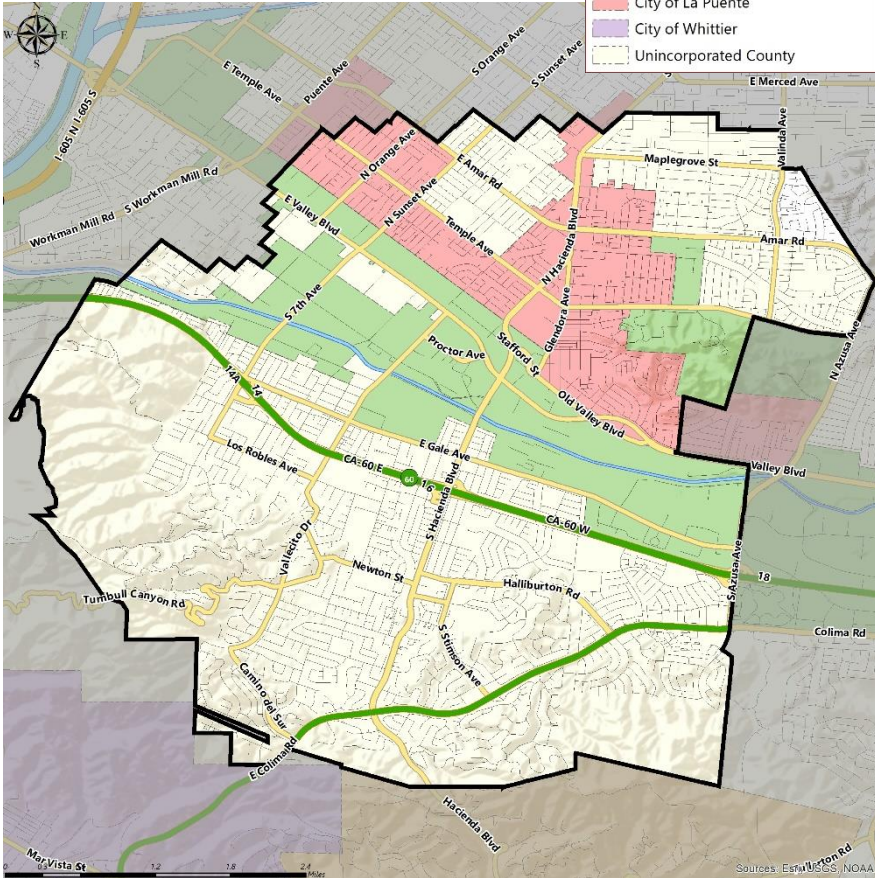
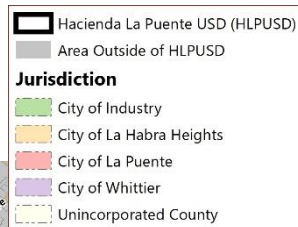
▶ **CENSUS DATA AND TRUSTEE AREA ADJUSTMENT**  
**EDUCATION CODE SECTION 5019.5**

- After every decennial census, California school districts must:
  1. Review the new census data to determine if the school district's trustee areas are still within the allowable population variance
  2. Approve of adjustments to trustee area boundaries to bring them within the maximum population variance of 10% or less [10% established by case law and industry practice]
- 2020 census data was released on September 27, 2021
- *Adjustments to trustee areas must be approved by the Board no later than February 28, 2022*



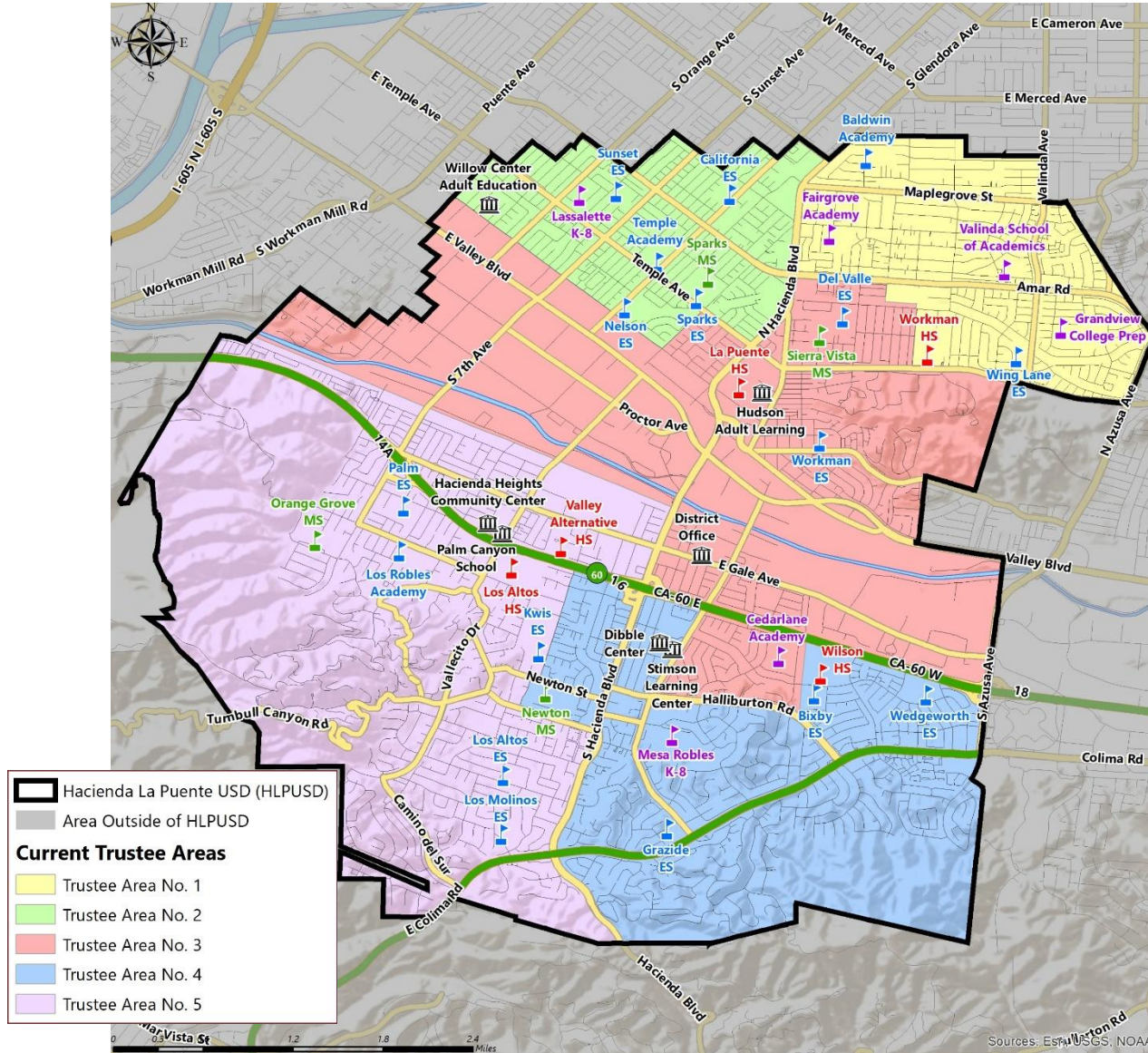
# ▶ DISTRICT DEMOGRAPHICS

## 2020 CENSUS DATA



Population	Total Population		Age 18 and over	
	Total	%	Total	%
Hispanic/Latino	71,719	62.4%	54,767	59.9%
White	8,316	7.2%	7,498	8.2%
Black / African American	1,301	1.1%	1,170	1.3%
American Indian /Alaska Native	195	0.2%	178	0.2%
Asian	31,497	27.4%	26,552	29.0%
Native Hawaiian/ Pacific Islander	135	0.1%	118	0.1%
Other	401	0.3%	252	0.3%
Two or More Races	1,355	1.2%	882	1.0%
<b>Total</b>	<b>114,919</b>	<b>100%</b>	<b>91,417</b>	<b>100%</b>

# ▶ CURRENT TRUSTEE AREAS



▶ DISTRICT DEMOGRAPHICS  
**2020 CENSUS DATA**



- 2020 census data showed substantial changes in the area served by HLPUSD from 2010 to 2020, including:
  - Overall population decline of over 1,550 (-1.4%)
  - Total Variance of 12.3% based on 2020 Census (*Out of Compliance*)

Trustee Area	2010 Census		2020 Census		Change	
	Total	Variance	Total	Variance	Population	Percent
Trustee Area 1	23,589	1.2%	23,300	1.4%	-289	-1.2%
Trustee Area 2	23,137	-0.7%	22,080	-3.9%	-1,057	-4.6%
Trustee Area 3	22,460	-3.6%	21,347	-7.1%	-1,113	-5.0%
Trustee Area 4	23,527	1.0%	24,172	5.2%	645	2.7%
Trustee Area 5	23,793	2.1%	24,020	4.5%	227	1.0%
<b>Total Population</b>	<b>116,506</b>	<b>5.7%</b>	<b>114,919</b>	<b>12.3%</b>	<b>-1,587</b>	<b>-1.4%</b>

## ► CURRENT TRUSTEE AREAS

Census 2020 Total Population:		114,919		Ideal Trustee Area Size:		22,984		Total Variance:		12.3%	
TRUSTEE AREA	Trustee Area 1		Trustee Area 2		Trustee Area 3		Trustee Area 4		Trustee Area 5		
2010 vs. 2020	2010	2020	2010	2020	2010	2020	2010	2020	2010	2020	
Population	23,589	<b>23,300</b>	23,137	<b>22,080</b>	22,460	<b>21,347</b>	23,527	<b>24,172</b>	23,793	<b>24,020</b>	
Population Variance	1.2%	<b>1.4%</b>	-0.7%	<b>-3.9%</b>	-3.6%	<b>-7.1%</b>	1.0%	<b>5.2%</b>	2.1%	<b>4.5%</b>	
Hispanic/Latino	76.7%	<b>73.0%</b>	87.1%	<b>83.3%</b>	77.7%	<b>73.0%</b>	32.6%	<b>33.3%</b>	52.1%	<b>52.8%</b>	
White	6.5%	<b>4.7%</b>	4.6%	<b>3.1%</b>	7.3%	<b>5.5%</b>	14.3%	<b>10.1%</b>	17.0%	<b>12.1%</b>	
Black/African American	1.9%	<b>1.5%</b>	1.2%	<b>0.8%</b>	1.1%	<b>1.2%</b>	1.1%	<b>1.1%</b>	1.3%	<b>1.1%</b>	
American Indian/Alaska Native	0.2%	<b>0.2%</b>	0.2%	<b>0.1%</b>	0.2%	<b>0.2%</b>	0.1%	<b>0.1%</b>	0.1%	<b>0.2%</b>	
Asian	13.7%	<b>19.0%</b>	6.3%	<b>11.6%</b>	12.8%	<b>18.8%</b>	50.1%	<b>53.3%</b>	28.1%	<b>31.7%</b>	
Native Hawaiian/Other Pacific Islander	0.1%	<b>0.2%</b>	0.1%	<b>0.1%</b>	0.1%	<b>0.1%</b>	0.2%	<b>0.1%</b>	0.1%	<b>0.1%</b>	
Other	0.2%	<b>0.3%</b>	0.1%	<b>0.4%</b>	0.1%	<b>0.4%</b>	0.1%	<b>0.3%</b>	0.1%	<b>0.3%</b>	
Two or More Races	0.7%	<b>1.0%</b>	0.5%	<b>0.5%</b>	0.6%	<b>0.8%</b>	1.4%	<b>1.7%</b>	1.2%	<b>1.7%</b>	

\*Total Population; Source: Redistricting Database for California, Published by Statewide Database on September 27, 2021

\*\*Citizen Voting Age Population (CVAP); Source: American Community Survey, 2015-2019 Data

## ▶ CONSIDERATIONS FOR ADJUSTING TRUSTEE AREAS



Each area shall contain nearly equal number of inhabitants



Follow man-made and natural geographic features, as much as possible, roads, and or divisions.



Drawn to comply with the Federal Voting Rights Act



Respect incumbency, if possible



Compact and contiguous, as much as possible



Other local considerations, such as keeping schools within their original trustee areas



Respect communities of interest, as much as possible

► **TIMELINE**

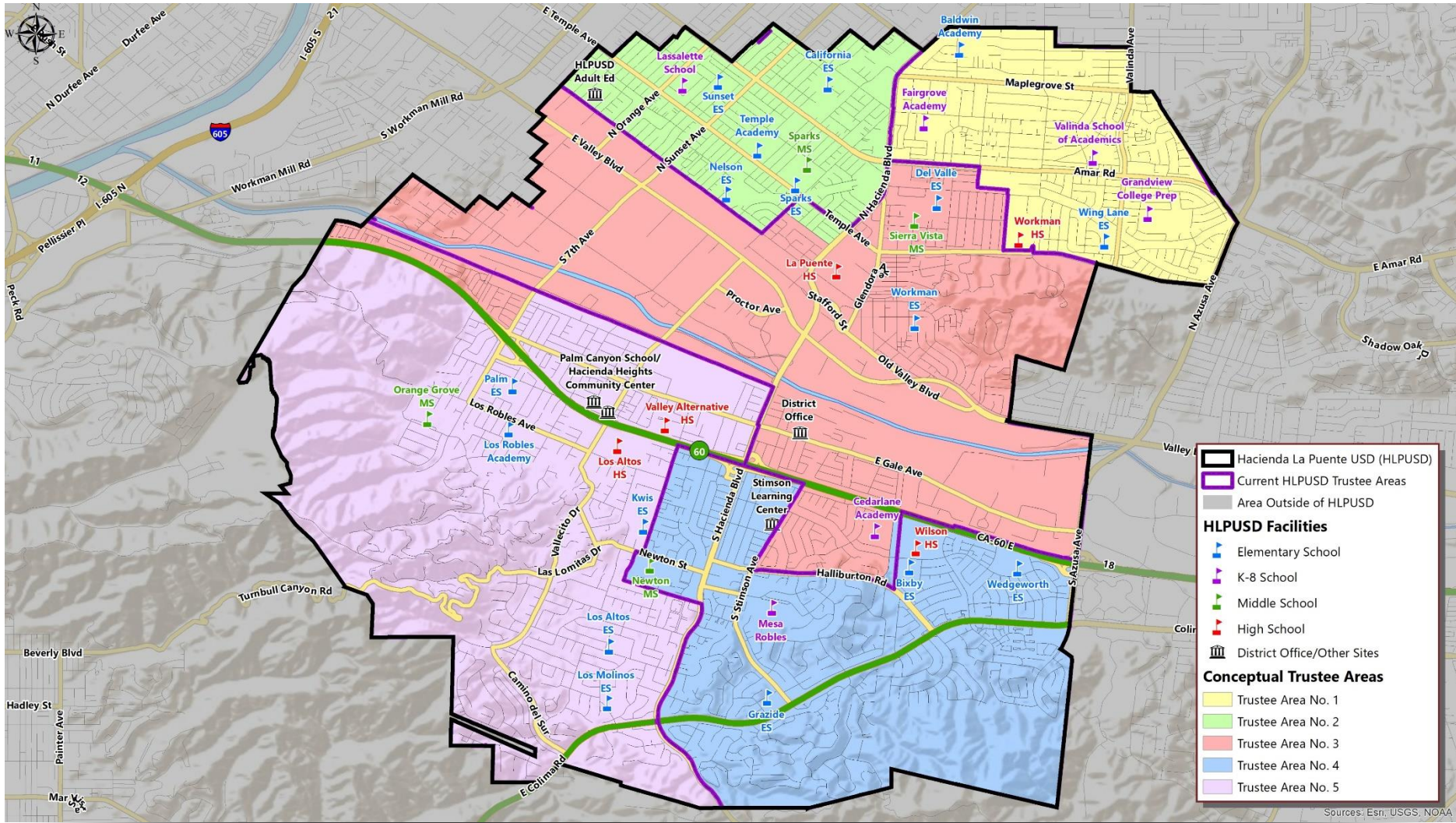
<b>DATE</b>	<b>ACTIVITY</b>
September 27, 2021	2020 Census data was finalized by the California Department of Finance
<b>November 18, 2021</b>	<b>Board Meeting: presentation on evaluation of existing trustee areas and receive input on potential boundary adjustments</b>
January 6, 2022	Cooperative Strategies and HLPUSD holds community input meeting
<b>January 13, 2022</b>	<b>Public Hearing &amp; Board Meeting: Review initial trustee area adjustment scenarios</b>
January 18, 2022	Cooperative Strategies and HLPUSD holds community input meeting
<b>January 25, 2022</b>	<b>Public Hearing &amp; Board Meeting: Review trustee area scenarios</b>
January – February	Cooperative Strategies revises scenarios based on Board and public input
<b>February 10, 2022</b>	<b>Public Hearing &amp; Board Meeting: Approve final trustee area adjustment scenario</b>
February 28, 2022	Deadline for District approval of trustee area boundary adjustments





# MAP SCENARIOS

# ► SCENARIO 1



Sources: Esri, USGS, NOAA

## ► DEMOGRAPHICS SCENARIO 1

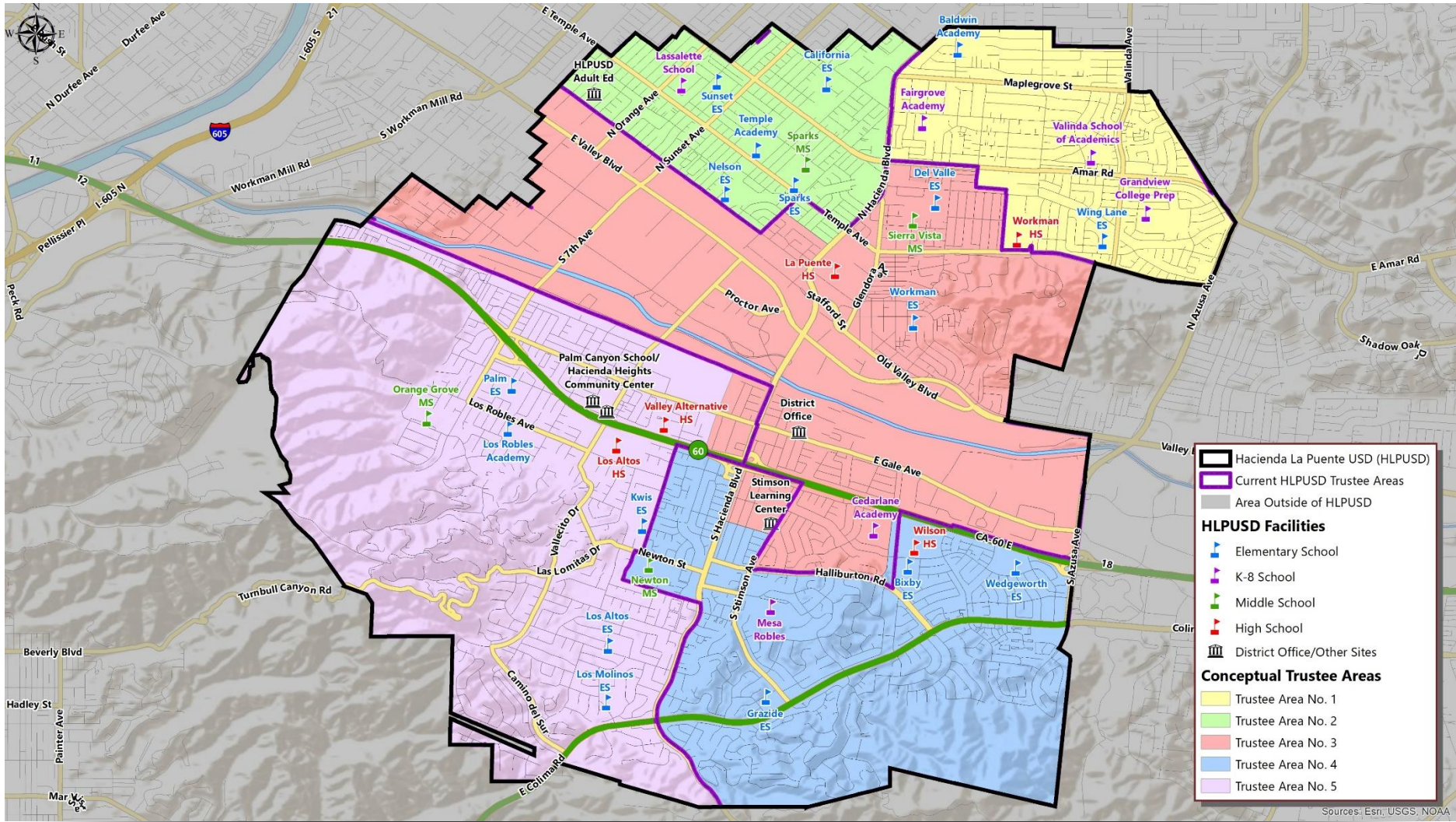
Census 2020 Total Population:	114,919	Ideal Trustee Area Size:	22,984	Total Variance:	9.3%
----------------------------------	---------	-----------------------------	--------	-----------------	------

TRUSTEE AREA	Trustee Area 1		Trustee Area 2		Trustee Area 3		Trustee Area 4		Trustee Area 5	
TP* vs. CVAP**	TP	CVAP	TP	CVAP	TP	CVAP	TP	CVAP	TP	CVAP
Population	23,300	<b>14,634</b>	22,841	<b>14,212</b>	22,566	<b>15,872</b>	24,172	<b>16,867</b>	22,040	<b>15,792</b>
Population Variance	1.4%	<b>N/A</b>	-0.6%	<b>N/A</b>	-1.8%	<b>N/A</b>	5.2%	<b>N/A</b>	-4.1%	<b>N/A</b>
Hispanic/Latino	73.0%	<b>70.7%</b>	83.5%	<b>82.1%</b>	72.2%	<b>71.3%</b>	33.3%	<b>30.1%</b>	51.3%	<b>46.2%</b>
White	4.7%	<b>6.1%</b>	3.0%	<b>4.4%</b>	6.1%	<b>9.1%</b>	10.1%	<b>15.5%</b>	12.2%	<b>18.0%</b>
Black/African American	1.5%	<b>3.6%</b>	0.8%	<b>1.6%</b>	1.2%	<b>1.5%</b>	1.1%	<b>1.4%</b>	1.1%	<b>1.6%</b>
American Indian/Alaska Native	0.2%	<b>0.3%</b>	0.1%	<b>0.0%</b>	0.2%	<b>0.2%</b>	0.1%	<b>0.0%</b>	0.2%	<b>0.3%</b>
Asian	19.0%	<b>18.5%</b>	11.5%	<b>11.7%</b>	19.0%	<b>17.5%</b>	53.3%	<b>52.1%</b>	33.1%	<b>33.7%</b>
Native Hawaiian/Other Pacific Islander	0.2%	<b>0.3%</b>	0.1%	<b>0.0%</b>	0.1%	<b>0.0%</b>	0.1%	<b>0.0%</b>	0.1%	<b>0.0%</b>
Other	0.3%	<b>0.0%</b>	0.4%	<b>0.0%</b>	0.4%	<b>0.0%</b>	0.3%	<b>0.0%</b>	0.3%	<b>0.0%</b>
Two or More Races	1.0%	<b>0.5%</b>	0.5%	<b>0.2%</b>	0.9%	<b>0.3%</b>	1.7%	<b>0.9%</b>	1.7%	<b>0.1%</b>

\*Total Population; Source: Redistricting Database for California, Published by Statewide Database on September 27, 2021

\*\*Citizen Voting Age Population (CVAP); Source: American Community Survey, 2015-2019 Data

# SCENARIO 2



## ► DEMOGRAPHICS SCENARIO 2

Census 2020 Total Population:	114,919	Ideal Trustee Area Size:	22,984	Total Variance:	3.4%
----------------------------------	---------	-----------------------------	--------	-----------------	------

TRUSTEE AREA	Trustee Area 1		Trustee Area 2		Trustee Area 3		Trustee Area 4		Trustee Area 5	
TP* vs. CVAP**	TP	CVAP	TP	CVAP	TP	CVAP	TP	CVAP	TP	CVAP
Population	23,300	<b>14,634</b>	22,841	<b>14,212</b>	22,517	<b>15,516</b>	23,216	<b>16,254</b>	23,045	<b>16,761</b>
Population Variance	1.4%	<b>N/A</b>	-0.6%	<b>N/A</b>	-2.0%	<b>N/A</b>	1.0%	<b>N/A</b>	0.3%	<b>N/A</b>
Hispanic/Latino	73.0%	<b>70.7%</b>	83.5%	<b>82.1%</b>	71.9%	<b>71.2%</b>	32.2%	<b>29.3%</b>	51.9%	<b>47.1%</b>
White	4.7%	<b>6.1%</b>	3.0%	<b>4.4%</b>	5.7%	<b>8.7%</b>	10.3%	<b>15.6%</b>	12.4%	<b>18.0%</b>
Black/African American	1.5%	<b>3.6%</b>	0.8%	<b>1.6%</b>	1.1%	<b>1.3%</b>	1.1%	<b>1.4%</b>	1.2%	<b>1.7%</b>
American Indian/Alaska Native	0.2%	<b>0.3%</b>	0.1%	<b>0.0%</b>	0.2%	<b>0.2%</b>	0.1%	<b>0.0%</b>	0.1%	<b>0.3%</b>
Asian	19.0%	<b>18.5%</b>	11.5%	<b>11.7%</b>	19.7%	<b>18.2%</b>	54.2%	<b>52.7%</b>	32.3%	<b>32.8%</b>
Native Hawaiian/Other Pacific Islander	0.2%	<b>0.3%</b>	0.1%	<b>0.0%</b>	0.1%	<b>0.0%</b>	0.1%	<b>0.0%</b>	0.1%	<b>0.0%</b>
Other	0.3%	<b>0.0%</b>	0.4%	<b>0.0%</b>	0.4%	<b>0.0%</b>	0.2%	<b>0.0%</b>	0.3%	<b>0.0%</b>
Two or More Races	1.0%	<b>0.5%</b>	0.5%	<b>0.2%</b>	0.9%	<b>0.4%</b>	1.7%	<b>1.0%</b>	1.7%	<b>0.1%</b>

\*Total Population; Source: Redistricting Database for California, Published by Statewide Database on September 27, 2021

\*\*Citizen Voting Age Population (CVAP); Source: American Community Survey, 2015-2019 Data



QUESTIONS

A row of yellow school buses is parked in a grassy field. The buses are slightly out of focus, and the scene is overlaid with a large, semi-transparent, stylized letter 'S' graphic. The sky is blue with scattered white clouds.