



CUMULATIVE IMPACTS OF POLLUTION IN THE HLPUSD

May 5, 2022

- The HLPUSD serves families in a part of LA County that is disproportionately impacted by pollution
- Quemetco is one of the biggest polluters in LA County and it now wants to increase production by 25%
- The facility poses a well documented danger to our families and cannot be allowed to expand
- We ask that the HLPUSD take a stand to protect the children in our communities and oppose the proposed expansion

HLPUSD serves environmental justice communities

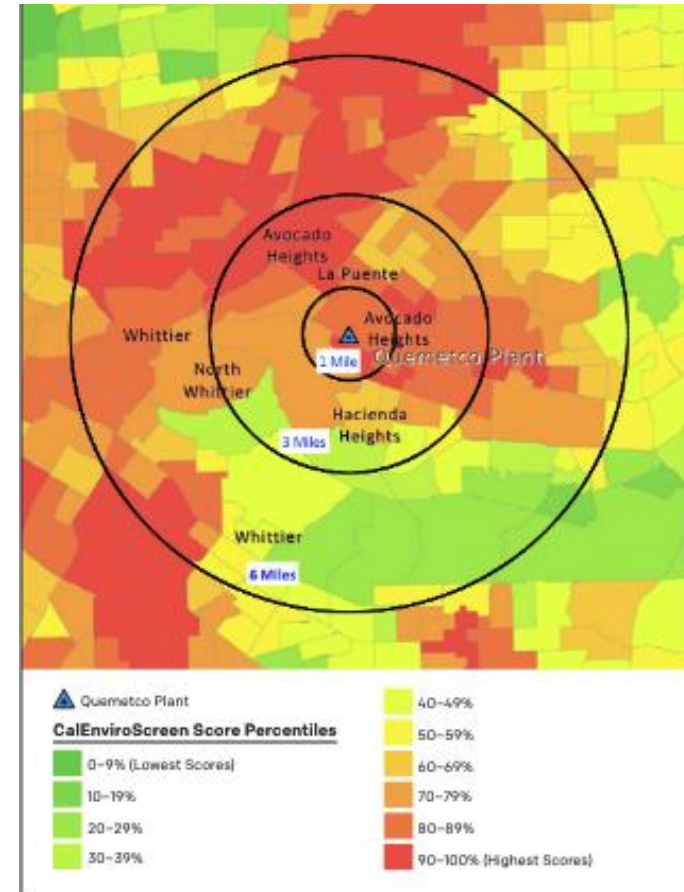
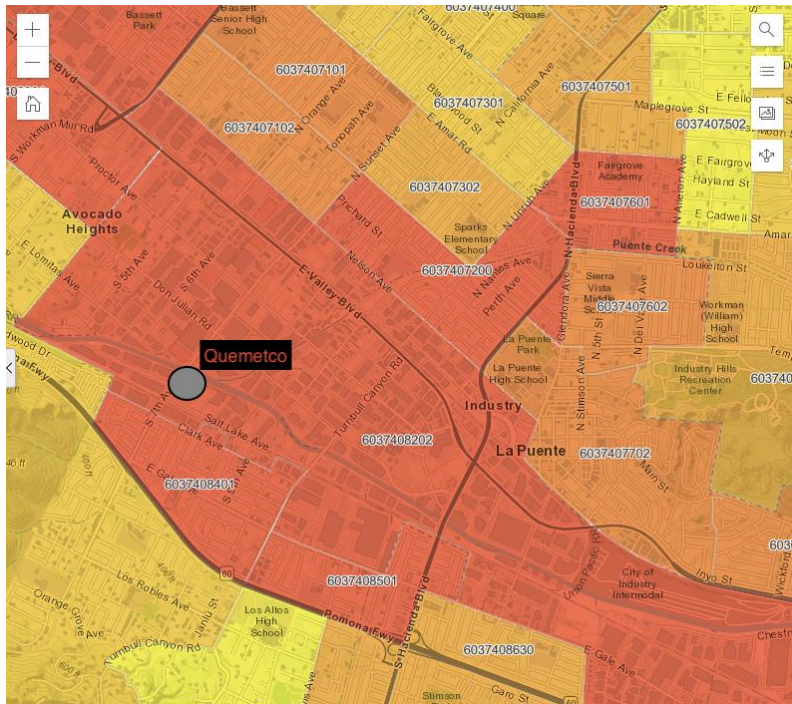
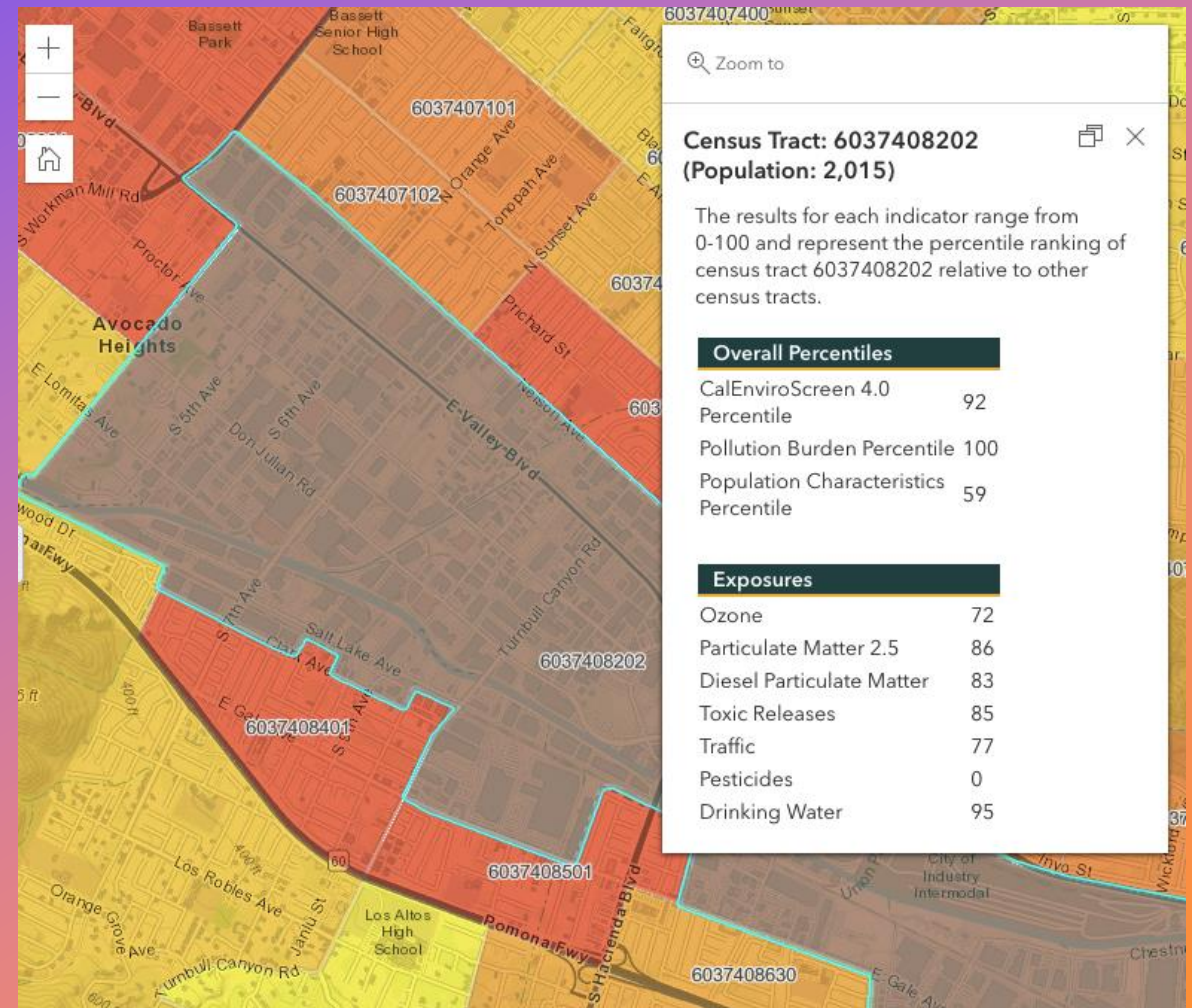


Figure 3: CalEnviroScreen Score Percentiles by Tract, as of October 25, 2018. (Source: Office of Health Hazard Assessment; LA Times)

ENVIRONMENTAL JUSTICE COMMUNITIES FACE MANY CHALLENGES

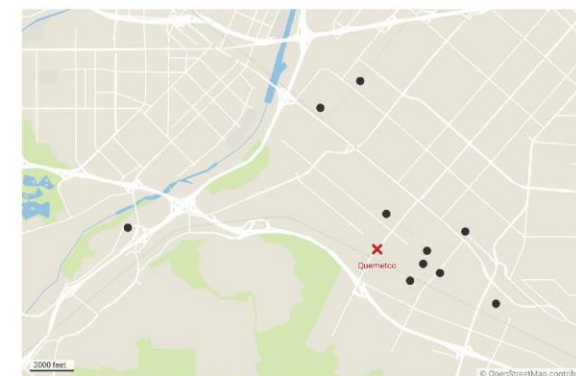


POLLUTING FACILITIES IN OUR COMMUNITY

Polluting Facilities Located Near Quemetco

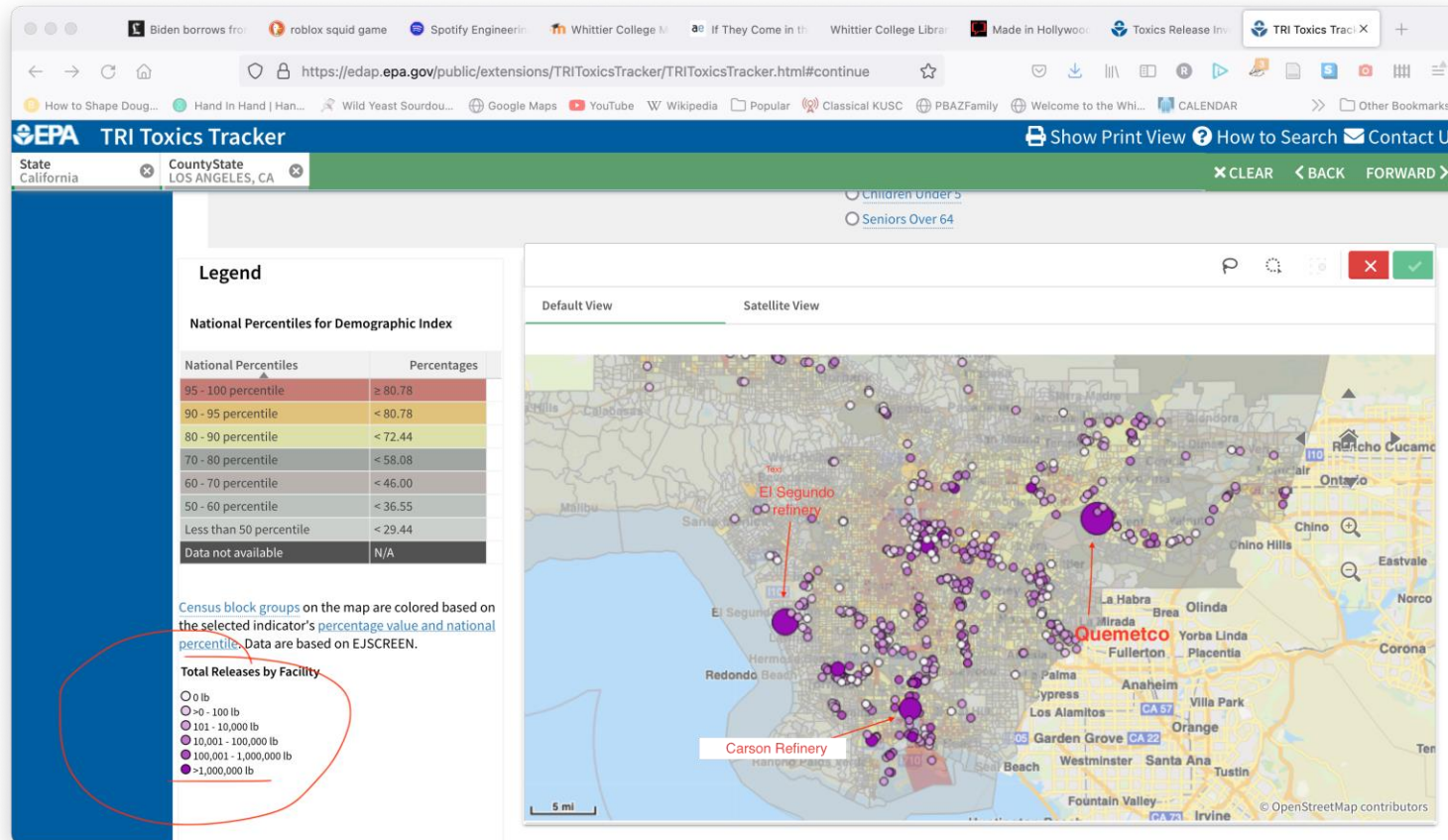
The following facilities are located within approximately 3 miles of Quemetco.

Source: EPA, Toxics Release Inventory.



Facility	Releases in 2020 (lbs.)	Waste Managed in 2020 (lbs.)	Chemicals Released
Allfast Fastening Systems	151	16,497	Copper, Nickel, Nitric Acid
Cardinal Industrial Finishes	178	178	Glycol Ethers
Hill Brothers Chemical Co.	131	69	Ammonia, Nitrate compounds, Xylene
Howmet Global Fastening Systems	37	11,067	Chromium, Nickel
Light Metals Inc.	544	48,610	Chromium, Copper, Dioxin and dioxin-like compounds, Lead, Manganese, Nickel
Miller Castings Inc.	13,808	19,026	Chromium, Cobalt, Lead, Nickel
Ninth Ave. Foods	5,360	107,206	Nitrate compounds
Sonoco Products	14	14	Lead
Teknor Apex Co.	3,484	3,528	Antimony and antimony compounds, Di(2-ethylhexyl) phthalate, Lead and lead compounds, Zinc compounds
Valley Processing	633	633	Zinc compounds

Toxic releases in our community



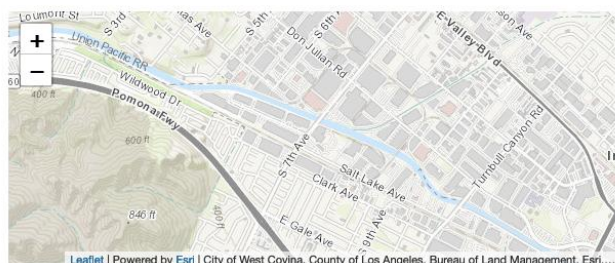
Quemetco has been proven to be a bad neighbor

- In 2016, AQMD released a Health Risk Assessment for Quemetco because the facility had significantly exceeded arsenic emissions and elevated our cancer risk
- In November 2018, DTSC on behalf of the State of California sued Quemetco for 29 violations of state hazardous waste laws and regulations.
- Since then, Quemetco has repeatedly exceeded arsenic and lead emissions limits and was fined \$600,000.00 by SCAQMD in 2020

EPA designates Quemetco as a Significant Noncomplier

- + ● Quemetco workers have elevated lead levels

Facility Summary



QUEMETCO INC
 720 S 7TH AVE, CITY OF INDUSTRY, CA 91707
 FRS ID: 11000609707
 EPA Region: 09
 Latitude: 34.025026
 Longitude: -117.98347
 Locational Data Source: EIS
 Industries: Primary Metal Manufacturing
 Indian Country: N

Enforcement and Compliance Summary

Statute	Compliance Monitoring Activities (5 years)	Date of Last Compliance Monitoring Activity	Compliance Status	Qtrs with NC (of 12)	Qtrs with Significant Violation
CAA	47	08/11/2020	No Violation Identified	0	0
CWA	2	06/12/2019	Violation Identified	11	0
EPCRA	1	04/24/2014	--	--	--
RCRA	13	03/07/2022	Significant Noncomplier	12	12

YEAR	BLOOD LEAD LEVEL (BLL), µG/DL			
	<10	10-24	25-39	40+
1987	0	0	94	28
1988	0	0	107	16
1989	0	0	84	<11
1990	0	0	0	<11
1991	0	0	54	<11
1992	0	0	80	<11
1993	0	<11	68	<11
1994	0	<11	49	<11
1995	0	<11	29	<11
1996	27	174	26	0
1997	26	182	27	<11
1998	89	169	29	<11
1999	17	152	23	<11
2000	38	149	27	<11
2001	38	176	29	<11
2002	67	177	18	0
2003	53	150	<11	0
2004	46	149	<11	0
2005	46	152	<11	0
2006	66	148	11	0
2007	56	166	12	0
2008	70	162	<11	0
2009	68	151	13	0
2010	83	149	<11	0
2011	89	149	<11	0
2012	89	148	<11	0
2013	100	141	<11	0
2014	131	124	<11	0
2015	175	135	<11	0
2016	145	127	<11	0
2017	145	111	<11	0

Note: Each worker was counted once per year at their highest BLL; cell sizes with ten or fewer people were replaced with "<11" per CA Dept. of Health Care Services guidelines.

Figure 5: Annual blood lead level distributions of Quemetco workers reported to California Department of Public Health

Quemetco is too close to homes and schools



Figure 1: Schools within 2 miles of Quemetco

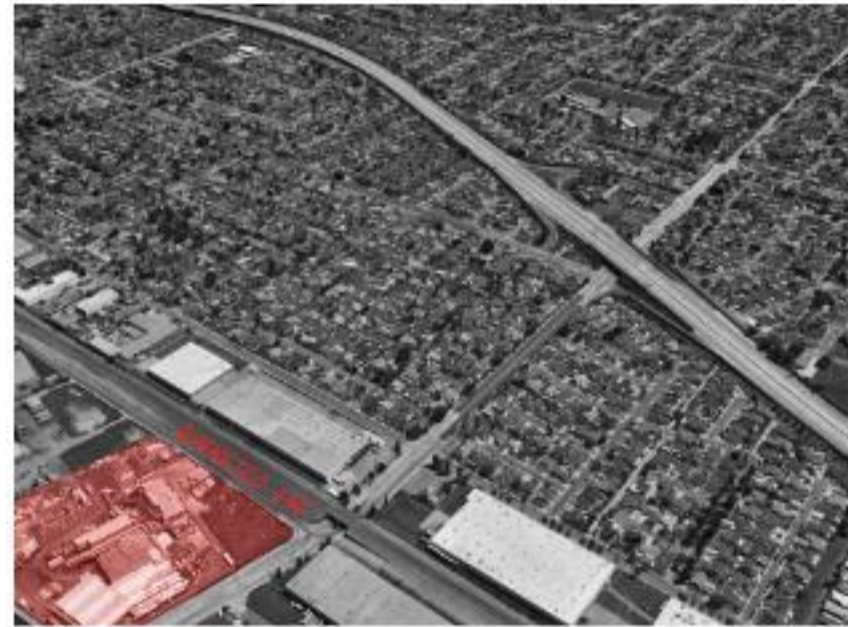


Figure 2: Proximity of Quemetco to nearby residents

There is no safe level of lead

- Even very low blood lead levels have been linked to neurological damage in children
- Once absorbed, lead accumulates in the body and is toxic to many bodily systems and organs, including the cardiovascular system, the blood (thus, causing conditions like anemia), the kidneys, the nervous system (thus, producing symptoms such as headache, lethargy, muscle weakness, tremors, and paralysis), and the reproductive system, among others



PROTECT YOUR HEALTH

Living Near Quemetco



Protect Your Health: Living Near Quemetco

This County booklet includes detailed information on:

- How lead and arsenic can affect your health
- Information for your doctor or health care provider
- Information about soil testing
- Action steps you can take around your home, yard, and garden
- How to care for your pets
- What you can do to manage stress
- Resources for additional information

Still pending: Quemetco's proposed expansion

- Quemetco is currently seeking approval from the South Coast Air Quality Management District (“SCAQMD”) to expand its activity
- This means processing 750 tons of hazardous waste per day, operating its lead smelting furnaces 24 hours a day, 7 days a week, 365 days a year, resulting in...
 - 5000 more trucks in our community each year
 - 54, 750 more tons of hazardous waste
 - 30 million more gallons of wastewater

LA COUNTY BOARD OF SUPERVISORS OPPOSES QUEMETCO'S PROPOSED EXPANSION

POLITICAL OPPOSITION

In addition to community members, local political representatives have also expressed their opposition to Quemetco's operations. In 2019, Los Angeles County Supervisors Hilda L. Solis and Janice Hahn authored a motion in opposition to the expansion that was subsequently approved by the full Board of Supervisors. In their motion, they noted that Quemetco's proposed expansion "would increase hazardous waste, air pollution, including lead and arsenic emissions, water quality issues, traffic, and public health impacts in a community that is already disproportionately impacted by environmental and health risks." In 2020, Supervisors Solis and Hahn submitted another motion that was approved by the Board in which they expressed their opposition to Quemetco's waste permit being considered for renewal until the facility achieved full compliance with all environmental laws.

Protect our communities from harm

We ask that the HLPUSD Board take a stand to protect the children in our communities and oppose the proposed expansion

Thank you for your time and attention!