

RESOLUTION NO. 2021-2217

**RESOLUTION OF THE BOARD OF EDUCATION
OF THE NORTH MONTEREY COUNTY UNIFIED SCHOOL DISTRICT
APPROVING ADJUSTED TRUSTEE AREA BOUNDARIES**

WHEREAS, The North Monterey County Unified School District (“District”) currently uses a by-trustee area election process to elect its governing board members; and

WHEREAS, Education Code section 5019.5 requires school districts that elect by-trustee area to adjust the trustee area boundaries following each decennial federal census using population figures validated by the Population Research Unit of the Department of Finance; and

WHEREAS, the adjustments shall ensure that the population of each trustee area is proportional pursuant to Education Code section 5019.5(a)(1) or (2); and

WHEREAS, District staff, consultant and legal counsel have prepared a draft adjusted trustee area boundary plan for the District’s consideration (the “Plan”) that the Board has considered; and

WHEREAS, the Board conducted a public hearing on December 9, 2021 to receive public input and comment on the Plan; and

WHEREAS, the Board has considered all such public input and comment on the Plan; and

WHEREAS, the Board desires to adopt the Plan for use effective the November, 2022 general election and thereafter until further adjusted by the Board; and

WHEREAS, technical changes are often required during the implementation of realigned electoral district boundaries in order to coordinate those boundaries, which are based on Census geography, with other boundaries (e.g., jurisdictional boundaries, neighborhood boundaries, parcels, precinct boundaries, etc.) that may not be based on, or coordinated with, Census geography; and

NOW THEREFORE, be it resolved by the Board of Education of the North Monterey County Unified School District as follows:

1. That the above recitals are true and correct.
2. That the Board hereby adopts the Plan.
3. That the District Board hereby authorizes the Superintendent or her designee, in consultation with the demographer and legal counsel insofar as deemed advisable, to approve any further minor technical adjustments to the Plan that may be suggested by the Monterey County Elections Department in order to implement the Plan, provided such adjustments do not materially affect the populations in the Trustee Areas, the configuration of the Trustee Area boundaries and otherwise comply with the required redistricting criteria and intent of the December 16, 2021 Trustee Area Plan, and remain in compliance with the United States Constitution and the Federal Voting Rights Acts.

4. That the District Superintendent or her designee shall advise the District of any such further adjustments that are requested by the Monterey County Elections Department in order to implement the December 16, 2021 Adjusted Trustee Area Plan

5. That the Superintendent and/or her designee take all actions necessary to implement the Plan in time for the next governing board member election in November of 2022.

ADOPTED, SIGNED AND APPROVED this 16 day of December , 2021.



President of the Governing Board for the
North Monterey County Unified School District

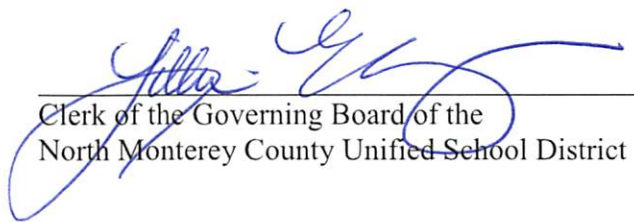
I, Lillian Mulvey, Clerk of the Governing Board of the North Monterey County Unified School District, do hereby certify that the foregoing Resolution was adopted by the Governing Board of said District at a meeting of said Board held on the 16 day of December, 2021, and that it was so adopted by the following vote:

AYES: 5

NOES: 0

ABSTAIN: 0

ABSENT: 0



Clerk of the Governing Board of the
North Monterey County Unified School District

EXHIBIT "A"

REVISED TRUSTEE AREA PLAN POST-2020 CENSUS

North Monterey County Unified School District

Post-2020 Census Redistricting

Plan 1 Maps and Data

Recommended by the Advisory Redistricting Commission

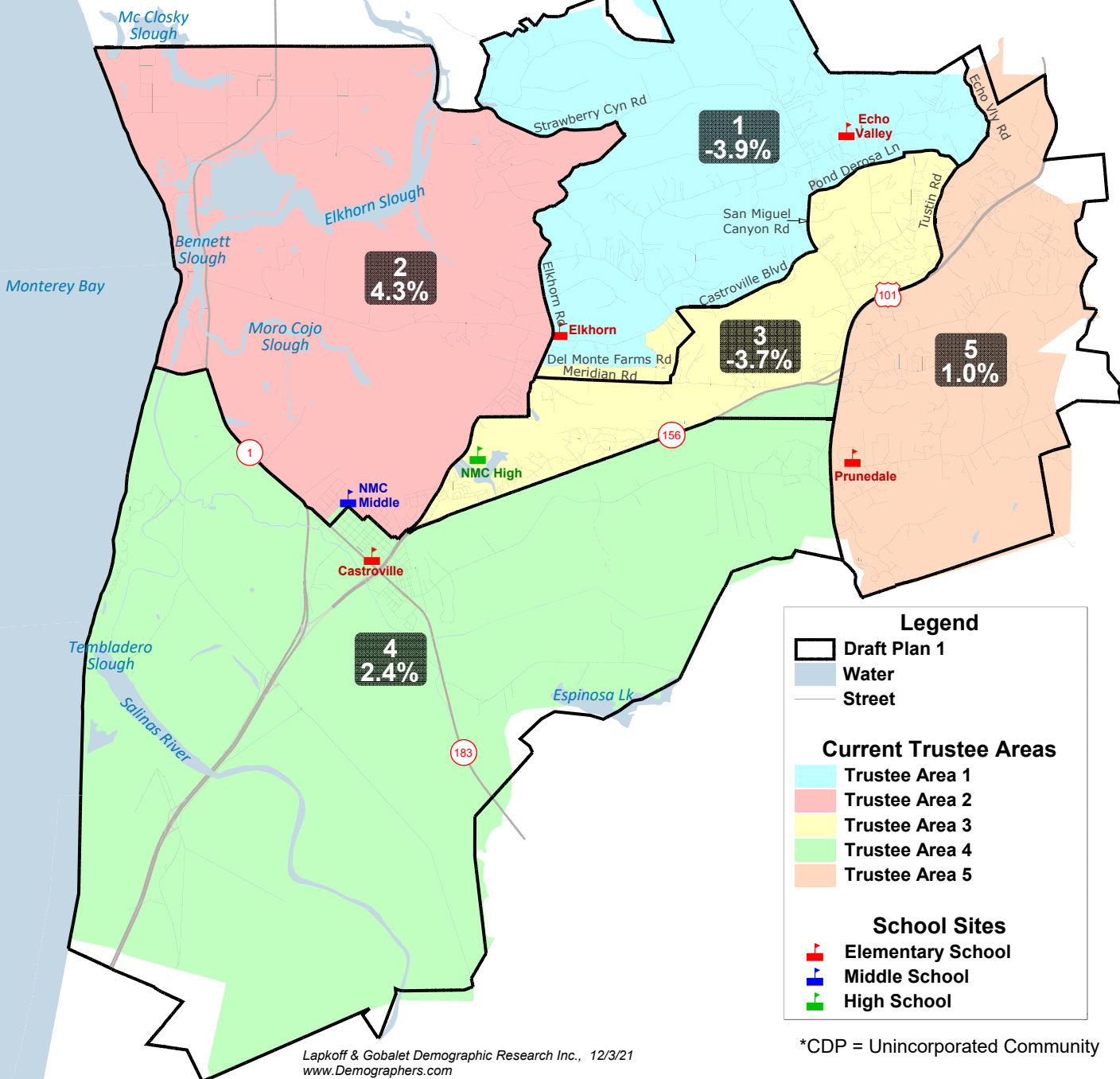
Lapkoff & Gobalet Demographic Research, Inc. 12/6/21

Plan Recommended by the NMCUSD Advisory Redistricting Commission (Plan 1)

<i>NMCUSD Plan 1</i>								<i>NMCUSD Plan 1</i>						
District	Total Population	Latino/ Hispanic	Non-Hispanic				Total	District	Total Population	Latino/ Hispanic	Non-Hispanic			
			White	Black	Asian	Other					White	Black	Asian	Other
Total Population Percentages								Registered Voters						
1	5,581	49%	43%	0%	4%	4%	100%	1	3,332	33%	n/a	n/a	n/a	n/a
2	6,080	83%	12%	0%	3%	2%	100%	2	2,428	69%	n/a	n/a	n/a	n/a
3	5,589	51%	38%	1%	7%	3%	100%	3	3,204	31%	n/a	n/a	n/a	n/a
4	5,944	83%	11%	1%	3%	2%	100%	4	2,189	66%	n/a	n/a	n/a	n/a
5	5,863	45%	45%	1%	4%	5%	100%	5	3,763	31%	n/a	n/a	n/a	n/a
Total	29,057	63%	29%	1%	4%	3%	100%	Total	14,916	43%	n/a	n/a	n/a	n/a
Age 18+ (Voting Age) Population Percentages								Actual Voters						
1	4,461	45%	47%	0%	4%	4%	100%	1	2,669	31%	n/a	n/a	2%	n/a
2	4,372	79%	15%	0%	3%	2%	100%	2	1,746	66%	n/a	n/a	3%	n/a
3	4,313	44%	44%	1%	7%	3%	100%	3	2,677	29%	n/a	n/a	4%	n/a
4	4,040	80%	14%	1%	3%	2%	100%	4	1,579	62%	n/a	n/a	2%	n/a
5	4,629	39%	51%	1%	4%	5%	100%	5	3,091	29%	n/a	n/a	3%	n/a
Total	21,815	57%	34%	1%	4%	3%	100%	Total	11,762	39%	n/a	n/a	3%	n/a
Citizens of Voting Age (CVAP) Percentages								District	Total Pop	Deviation	% Deviation			
1	4,098	32%	44%	0%	2%	4%	82%	1	5,581	-230	-4.0%			
2	2,333	70%	9%	0%	1%	2%	81%	2	6,080	269	4.6%			
3	3,867	23%	39%	2%	8%	4%	76%	3	5,589	-222	-3.8%			
4	2,298	47%	13%	1%	2%	4%	68%	4	5,944	133	2.3%			
5	4,014	29%	38%	0%	2%	8%	78%	5	5,863	52	0.9%			
Total	16,610	37%	49%	1%	5%	8%	100%	Total	29,057					
								Ideal	5,811	499	8.6%			

Plan 1 Data

**North Monterey County Unified School District
Trustee Areas Adopted January 17, 2013
Draft Plan 1**



Legend

- Draft Plan 1
- Water
- Street

Current Trustee Areas

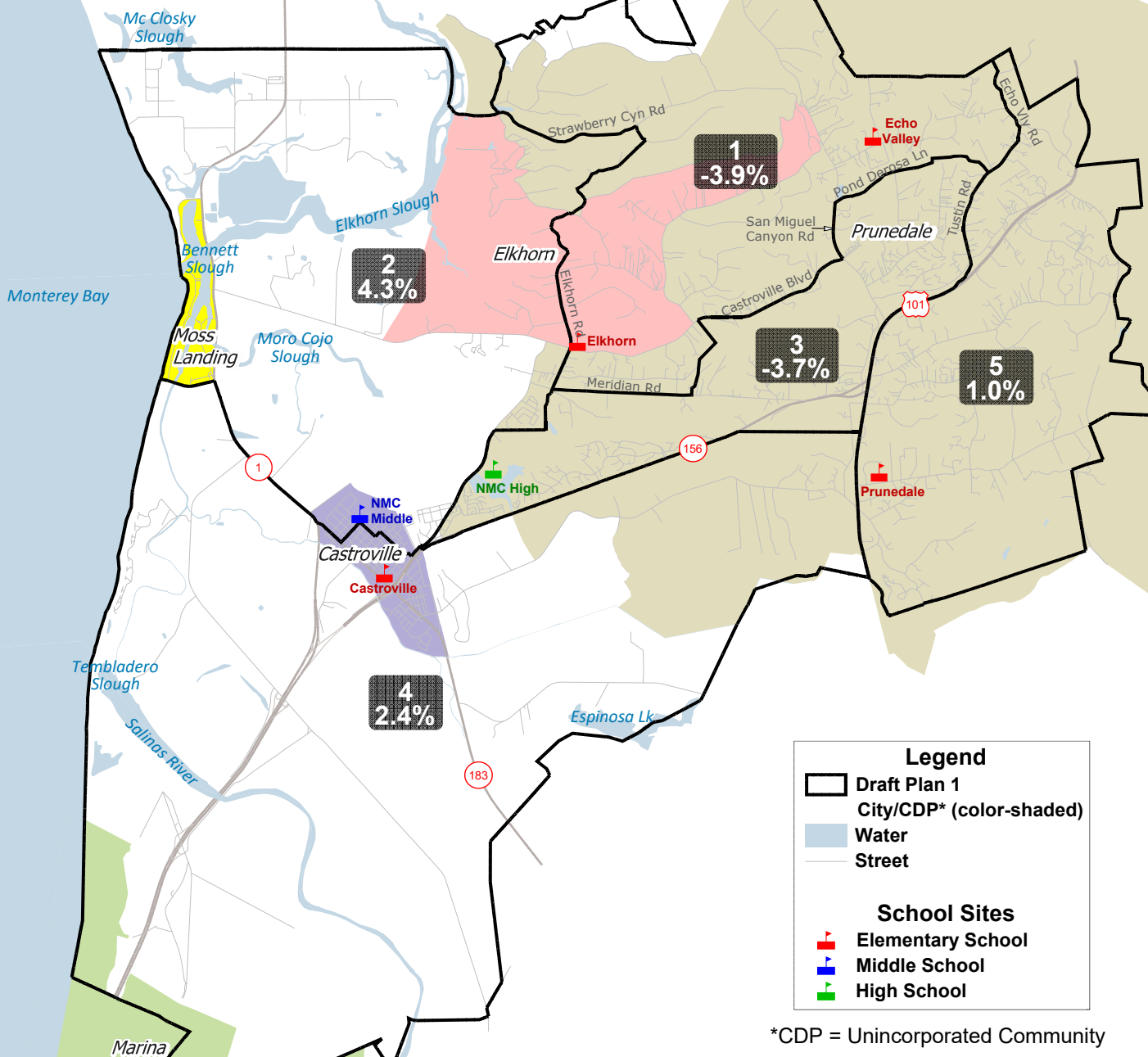
- Trustee Area 1
- Trustee Area 2
- Trustee Area 3
- Trustee Area 4
- Trustee Area 5

School Sites

- Elementary School
- Middle School
- High School

*CDP = Unincorporated Community

**North Monterey County Unified School District
 Cities/CDPs* and School Sites
 Draft Plan 1**



Legend

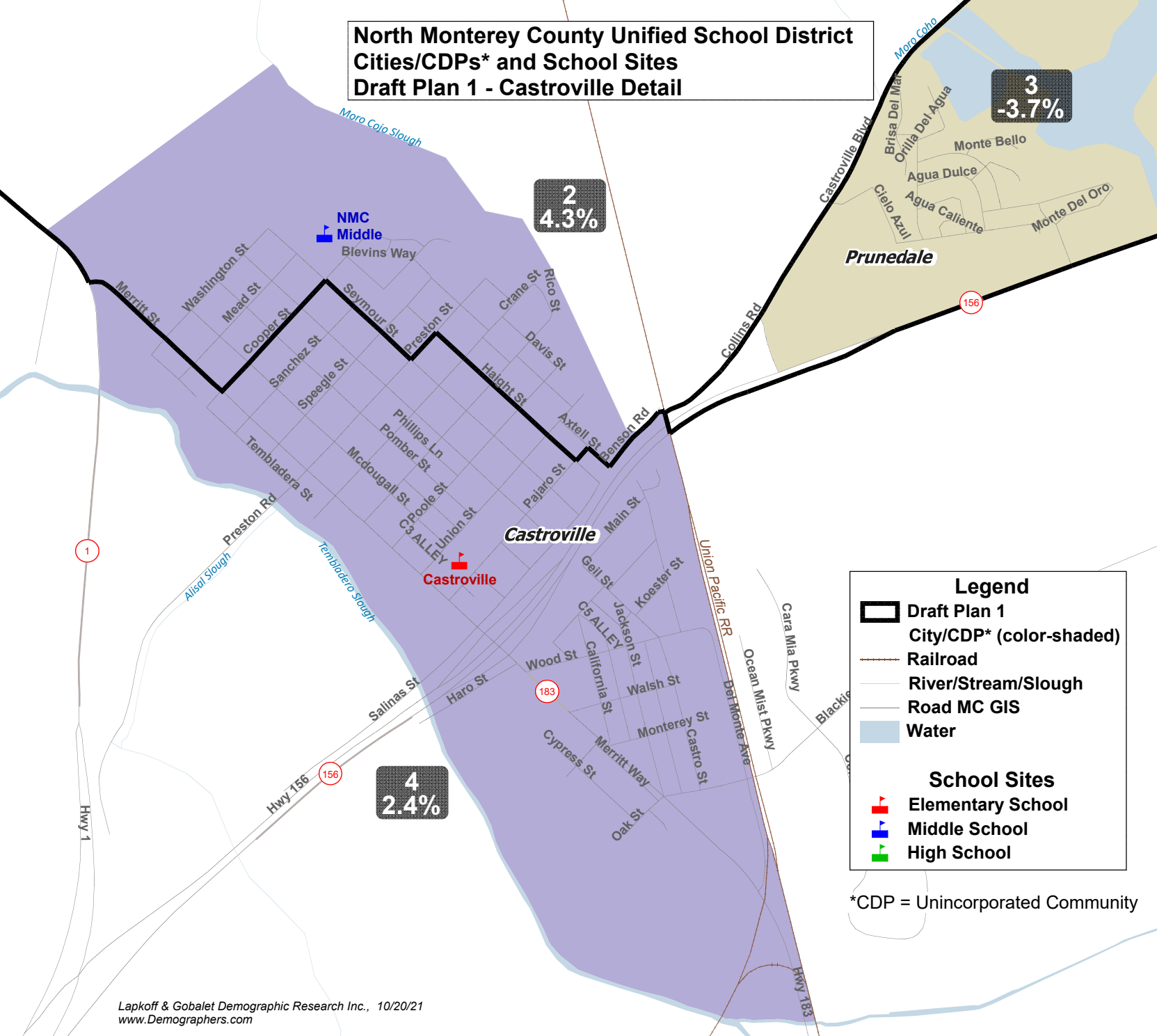
- Draft Plan 1
- City/CDP* (color-shaded)
- Water
- Street

School Sites

- Elementary School
- Middle School
- High School

*CDP = Unincorporated Community

North Monterey County Unified School District Cities/CDPs* and School Sites Draft Plan 1 - Castroville Detail



2
4.3%

3
-3.7%

4
2.4%

Legend

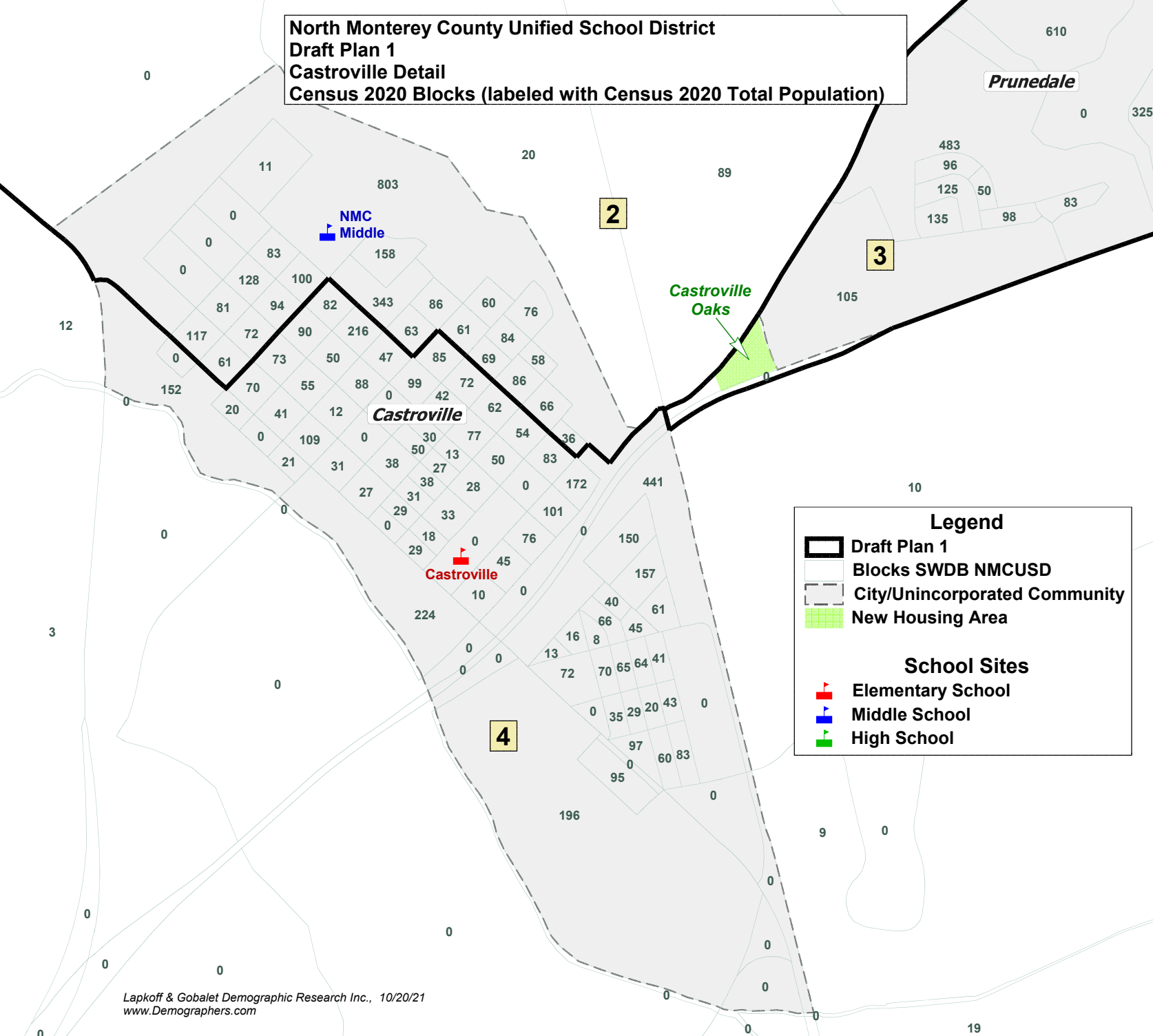
- Draft Plan 1
- City/CDP* (color-shaded)
- Railroad
- River/Stream/Slough
- Road MC GIS
- Water

School Sites

- Elementary School
- Middle School
- High School

*CDP = Unincorporated Community

**North Monterey County Unified School District
Draft Plan 1
Castroville Detail
Census 2020 Blocks (labeled with Census 2020 Total Population)**



Legend

- Draft Plan 1
- Blocks SWDB NMCUSD
- City/Unincorporated Community
- New Housing Area

School Sites

- Elementary School
- Middle School
- High School