

# *Learning Continuity and Attendance Plan*

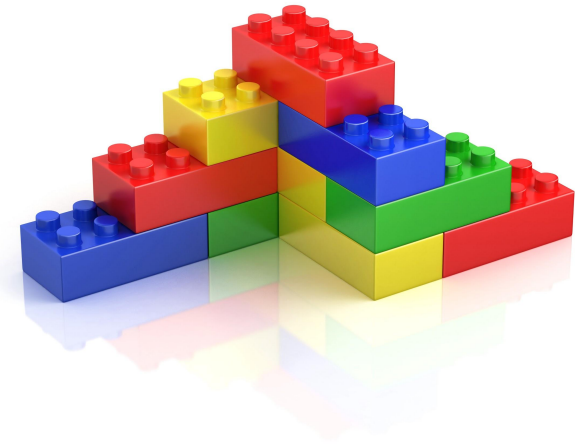
## LCAP

September 24, 2020



# Components of the LCAP

1. General Information
2. Stakeholder Engagement
3. Continuity of Learning
  - In-Person Instructional Offerings
  - Distance Learning Program
  - Pupil Learning Loss
4. Mental Health and Social Emotional Well-Being
5. Pupil and Family Engagement and Outreach
6. School Nutrition
7. Additional Actions to Implement the Learning Continuity Plan
8. Increased or Improved Services for Foster Youth, English Learners, and Low Income Students



# NMCUSD Learning Continuum 2020-2021

- Fulltime distance learning for most students through September
- Prioritized small groups of students on campus with physical distancing and PPE
- Individualized learning with Center for Independent Study



- Fulltime on-campus learning most students with appropriate health and safety measures
- Individualized learning with Center for Independent Study

## Distance



## Hybrid

- Additional groups on campus in smaller groups with physical distancing and PPE
- Alternating A/B schedule with 50% students on campus, and 50% distance learning
- Individualized Learning with Center for Independent Study

## On-Campus



# Continuity of Learning



## Distance Learning Program Components

1. Continuity of Instruction (LCAP Goal 1)
2. Access to Devices and Connectivity (LCAP Goal 2)
3. Pupil Participation and Progress (LCAP Goal 3)
4. Distance Learning Professional Development (LCAP Goal 1)
5. Staff Roles and Responsibilities (LCAP Goal 2)
6. Support for Pupils with Unique Needs (LCAP Goal 1)
7. Actions related to the Distance Learning Program (Description and Total Funds)



# Continuity of Learning



## Pupil Learning Loss (LCAP Goal 1)

1. Pupil Learning Loss Strategies
2. Effectiveness of Implemented Pupil Learning Loss Strategies
3. Actions to Address Pupil Learning Loss (Description and Total Funds)

## Mental Health and Social Emotional Well-Being (LCAP Goal 3)

## Pupil and Family Engagement and Outreach (LCAP Goal 3 and 4)



# Impact of COVID 19:



Physically closed March 16, 2020



Meal preparation and distribution changes



Challenges in effective, timely communication



Challenges with engagement

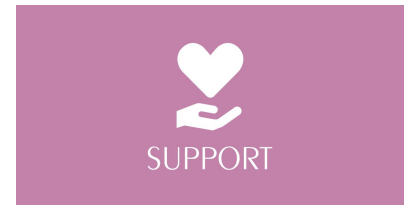




# Responses:

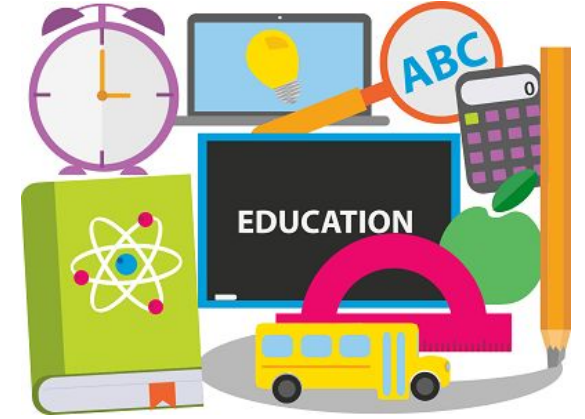


Attendance



# Lesson Design

- Span across Instructional Program Models
  - Distance
  - Hybrid
  - In-Person
- Synchronous and/or asynchronous
- Differentiation with student voice and choice
- High tech, low tech, no tech options
- Application
- Reflection





# Continuum of Learning

## Pupil Learning Loss



- Content standards and corresponding curriculum
- Screeners and Diagnostic Assessments
- Achievement Team process to review data
- Determine which students need what support/extensions
- Progress monitoring for EL and SpEd (ELD Checklists & IEP Goals)
- Review, create, and update individual learning plans
- Formative assessment and review progress



# Stakeholder Engagement



- ❑ January 2020- March 2020-LCAP Advisory
  - Data, bright spots, focus areas
- ❑ June 2020- Stakeholder Focus Groups
  - Reopening Plan
- ❑ June/July 2020- Action Teams
  - MiniTeams w/stakeholders
- ❑ Outreach in English and Spanish
  - District app, videos, social media, phone calls, Zoom sessions
- ❑ Student Feedback
  - Surveys, check ins, forms
- ❑ September 16, 2020- LCAP/Parent Advisory, Consult w/ NMCFT & CSEA
- ❑ September 17, 2020- DELAC



# Stakeholder Influence



Time	Monday 9/15	Tuesday 9/16	Wednesday 9/17	Thursday 9/18	Friday 9/19
8:00-8:30	Breakfast	Breakfast	Breakfast	Live ELA with Mr. Luning (20)	Breakfast
8:30-9:00	Prep Work Space	Prep Work Space	Prep Work Space	Prep Work Space	Prep Work Space
9:00-9:30	Live Advisory (20)	Live Training: Planning with Technology in Mind (40)	Live Training: Planning with Technology in Mind (40)	Live Training: Planning with Technology in Mind (40)	Live Training: Planning with Technology in Mind (40)
9:30-9:45	Classroom Work Search (20)				Classroom Work Search (20)
9:45-10:00			Homework Math (10)		
10:00-10:30	Independent Math Practice (20)	Live Math (20) Lesson 1.1 Take Apart: The Right Way (20) Practice Book p.23	Live Math (20) Lesson 1.1 Take Apart: The Right Way (20) Practice Book p.23	Live Math (20) Lesson 1.1 Take Apart: The Right Way (20) Practice Book p.23	Live Math (20) Lesson 1.1 Take Apart: The Right Way (20) Practice Book p.23
10:30-10:45	Independent Practice (20)	Independent Practice (20)	Independent Practice (20)	Independent Practice (20)	Independent Practice (20)
10:45-11:00	Independent ELA Practice (20)	Live ELA (20) Read: The Daylight Marriage (20) Read: The Daylight Marriage (20) Read: The Daylight Marriage (20)	Live ELA (20) Read: The Daylight Marriage (20) Read: The Daylight Marriage (20) Read: The Daylight Marriage (20)	Live ELA (20) Read: The Daylight Marriage (20) Read: The Daylight Marriage (20) Read: The Daylight Marriage (20)	Live ELA (20) Read: The Daylight Marriage (20) Read: The Daylight Marriage (20) Read: The Daylight Marriage (20)
11:00-11:15	Independent Practice (20)	Independent Practice (20)	Independent Practice (20)	Independent Practice (20)	Independent Practice (20)
11:15-11:30	Independent Practice (20)	Independent Practice (20)	Independent Practice (20)	Independent Practice (20)	Independent Practice (20)
11:30-11:45	Independent Practice (20)	Independent Practice (20)	Independent Practice (20)	Independent Practice (20)	Independent Practice (20)
11:45-12:00	Independent Practice (20)	Independent Practice (20)	Independent Practice (20)	Independent Practice (20)	Independent Practice (20)
12:00-12:15	Independent Practice (20)	Independent Practice (20)	Independent Practice (20)	Independent Practice (20)	Independent Practice (20)
12:15-12:30	Independent Practice (20)	Independent Practice (20)	Independent Practice (20)	Independent Practice (20)	Independent Practice (20)
12:30-12:45	Independent Practice (20)	Independent Practice (20)	Independent Practice (20)	Independent Practice (20)	Independent Practice (20)
12:45-1:00	Independent Practice (20)	Independent Practice (20)	Independent Practice (20)	Independent Practice (20)	Independent Practice (20)



# Mental Health & Social Emotional Well-Being

- Tier 1 support for all learners, families, and staff
- Additional supports including teletherapy
- Resources for Foster Youth/Homeless students
- Parenting series



# Pupil Engagement & Outreach

- Tiered process for re-engagement if student has been absent



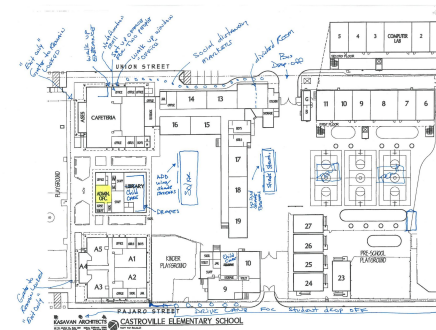
## Nutrition Services

- Over 600,000 meals!



## Additional Actions

- Reopening Facilities Plan





# Learning Continuity Attendance Plan

