

# BOND UPDATE #205

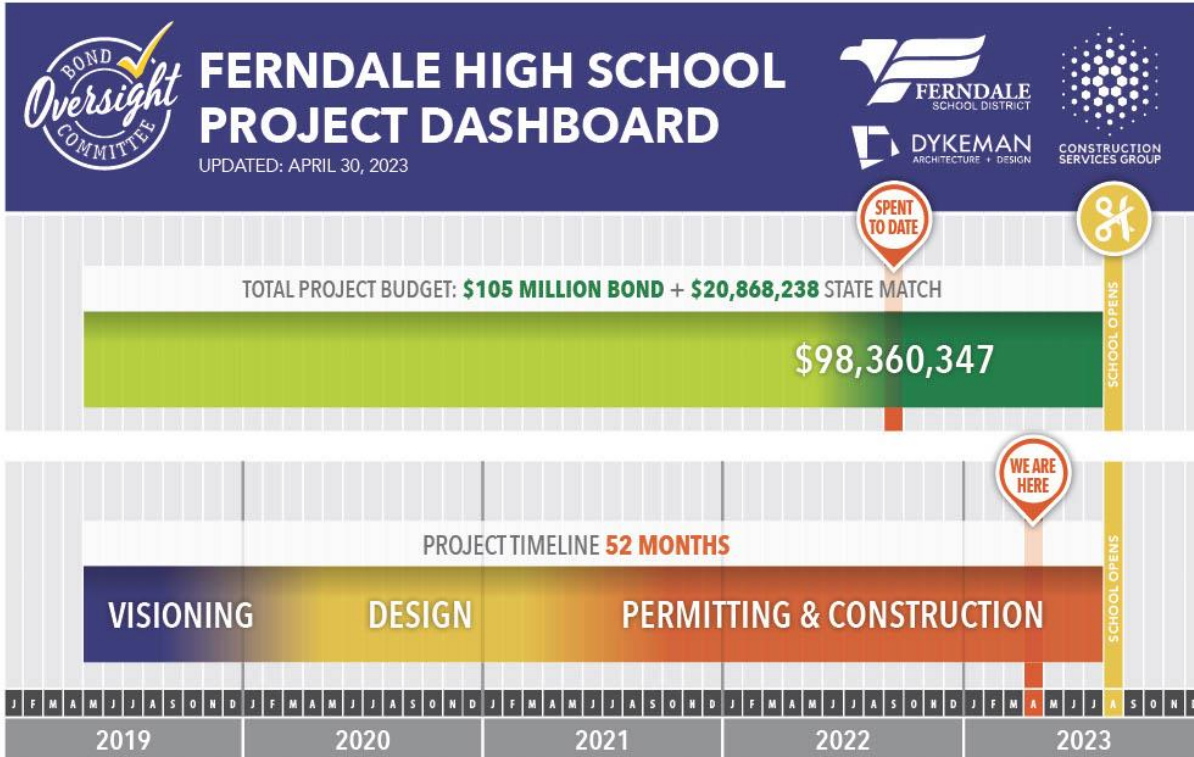
5.19.23

Here's what is going on with our bond projects.

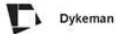
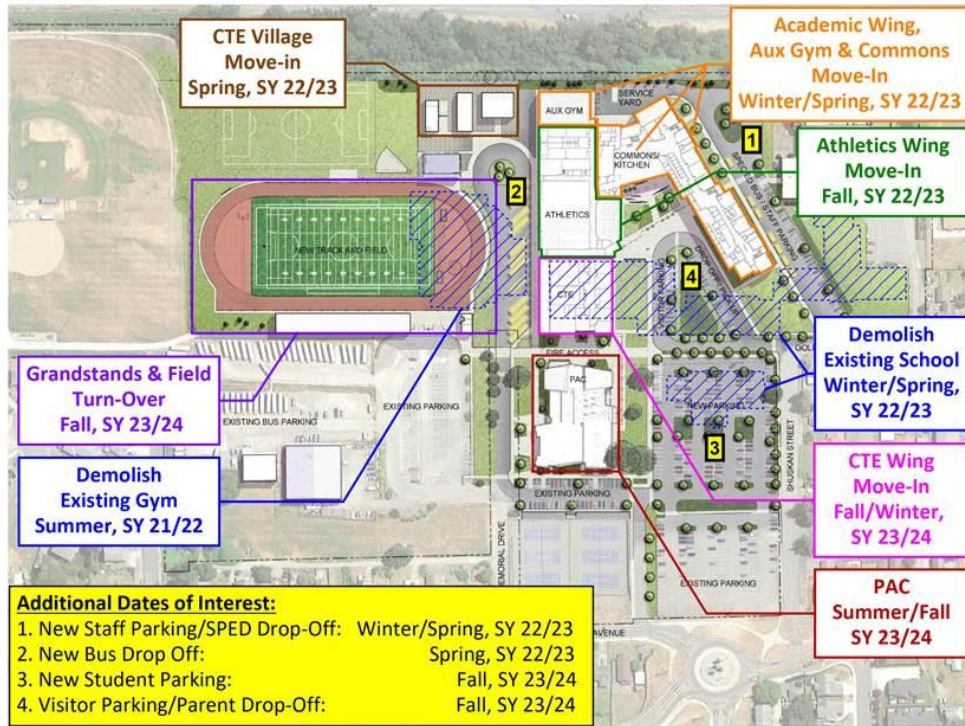
Enjoy!

Kristi

1. Fencing is now being installed around the Grandstands.
2. In-wall electrical infrastructure is in place in the Grandstands' press box, and the walls are now finished.
3. Final curbing work is nearly complete around the athletic field.
4. The concrete sidewalks around the athletic field ticket booth have made good progress this week.
5. The running surface base for the long jump area has now been installed. Later, a rubberized surface will be laid over the asphalt.
6. Crews have formed the mechanical mezzanine decking for the new CTE (Career and Technical Education) Wing, which will have a concrete floor slab poured on it.
7. The final underground stormwater detention system was installed this week. This will allow for prep work to begin in the new parking and drop off areas.
8. Crews continue to install rebar in the new Performing Arts Center reinforcement walls.
9. The Bond Oversight Committee will hold their next regular meeting at 6 p.m. Tuesday at Mountain View.
10. At the end of this week's update, you will find several photos of the Ferndale High School site with captions. You can also find more photos on the district website – including daytime pictures of construction taken every two hours, every day – at the following link: [Bond 2019 - Ferndale School District \(ferndalesd.org\)](https://ferndalesd.org/Bond-2019)
11. Below is the FHS project timeline as of April 30. It shows how much of our bond funding we have spent so far and how far along we are in building the new campus.



12. Below is a map showing the various components of the new FHS campus and when they'll be completed.



# FHS Move-In Plan

If you have questions or comments about any of the content of this update, please feel free to reach out to me or one of my colleagues. Have a wonderful weekend!

Kristi





**Fencing being installed around the Grandstands area**



**Wall finishes installed in the Grandstands' press box**

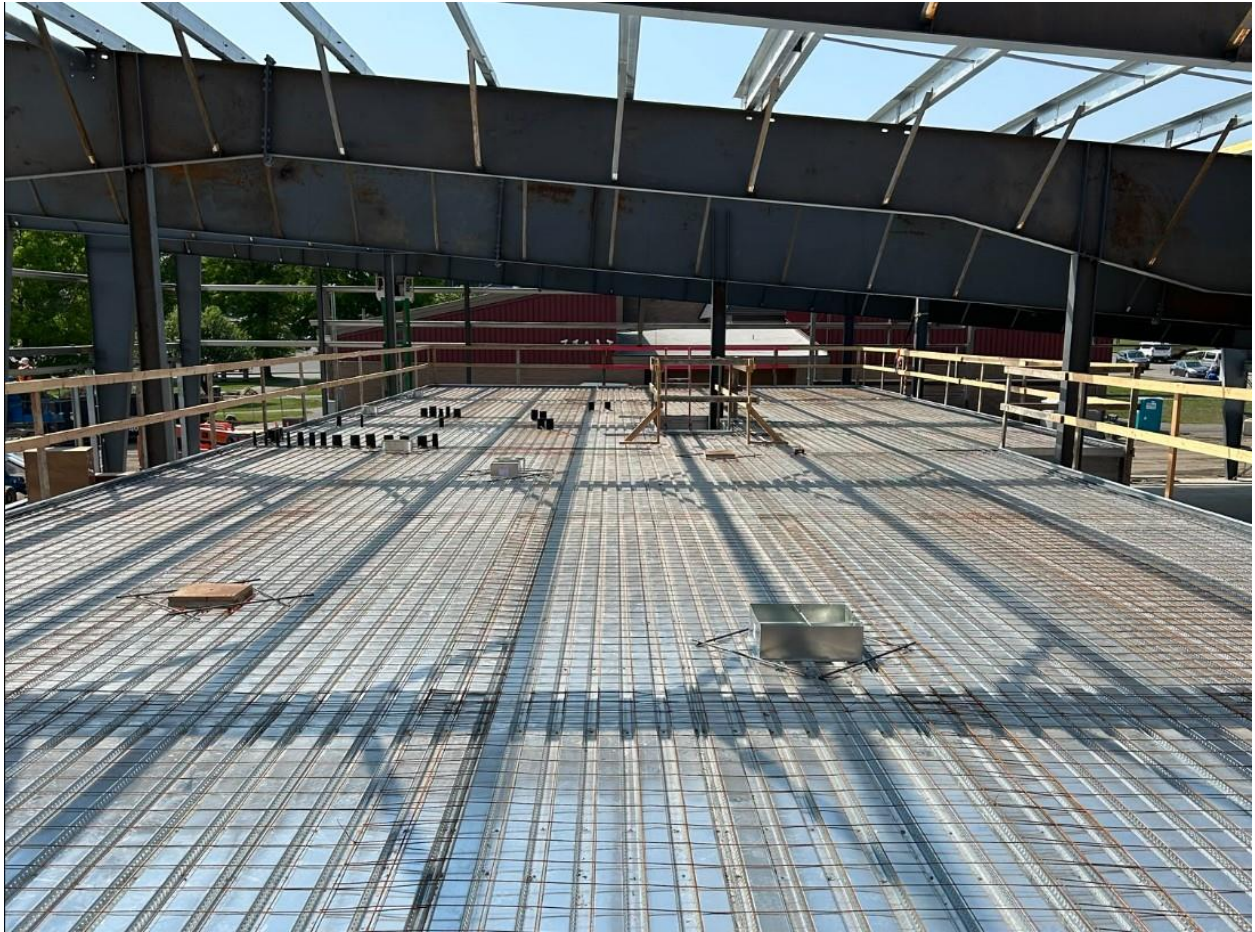


**Crews preparing for sidewalks around the Grandstands' ticket booth**





**The running surface base in the long jump area**

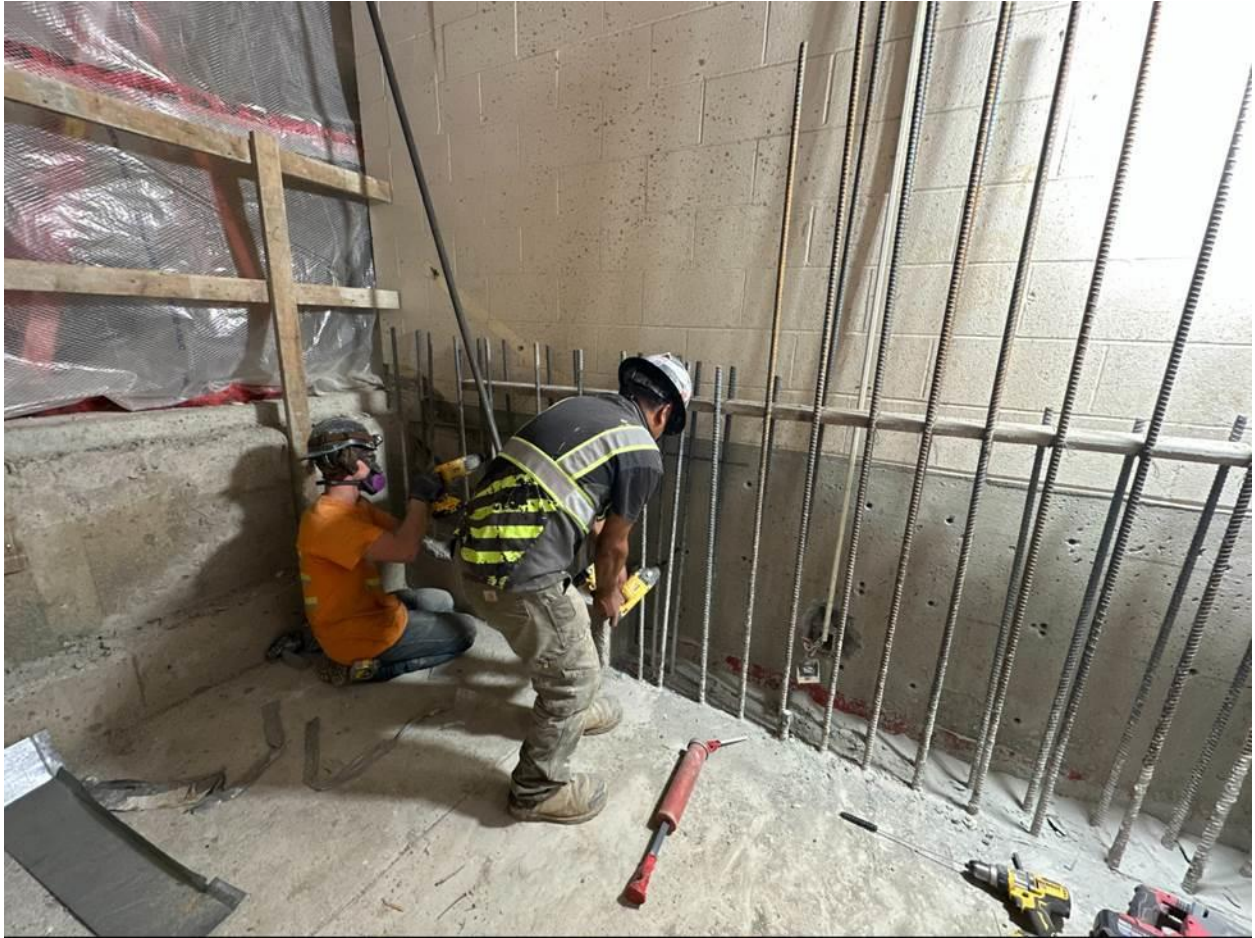


**The CTE Wing mechanical mezzanine (a concrete floor slab will be poured on top soon)**





**The final underground stormwater detention system was installed this week**



**Crews installing rebar in the new PAC reinforcement walls**