

Modernization 2014

Dinuba Unified School District

Modernization Sites

Washington Intermediate School

Grand View Elementary

Jefferson Elementary

Lincoln Elementary

Wilson Elementary

Dinuba High School

Construction Team:

Architect:

HMC Architects – Lee Salin, Principal Architect

Melinda Lum, Architect

Mike Gosselin – Construction Administrator



Financing: Dr. Terry Bradley, School Advisors, School Facility Consultants

Pre-Construction Site Logistics – Dr. Roger Orazo, Principals and Site Staff

Contractors:

Harris Construction Co. – DHS Project

Doug Reitz, Matt Davies and Pat Wiggins

Micham Construction Co. – all others

Steve Tindel and Doug Snyder

Construction Manager:

Jerry Lemus, CM Construction Management Services

Inspectors:

On-Site - Mike Cox, TWB Inspection

In Plant – Brandon Leach & Pat Robinette

Asbestos – Troy Brooks, Brooks

Testing: Technicon Laboratories



MODERNIATION

BUDGETS



Modernization Budgets

Soft Costs total just 8.28% of the total project.



Site			Soft Costs (Architect, CM, Testing, Inspection, Surveying, Bidding, Labor Compliance, etc)	
DSA Project No.	Construction			Total Project
Washington DSA 02-112147	\$5,916,884		\$118,904	\$6,035,788
Grand View Elem. DSA 02-112148	\$1,074,878		\$127,539	\$1,202,417
Jefferson Elem. DSA 02-112146	\$2,028,979		\$281,758	\$2,310,737
Lincoln Elem. DSA 02-112150	\$917,871		\$116,087	\$1,033,958
Wilson Elem DSA 02-112145	\$3,596,053		\$466,515	\$4,062,568
Dinuba High DSA 02-112149	\$4,091,061		\$480,981	\$4,572,042
TOTALS	\$17,625,726		\$1,591,784	\$19,217,510

MODERNIATION

SCOPE OF WORK



Washington Intermediate School Scope

- Replacement of two portable buildings – Café Warehouse and WIS Staff Room
- Technology, alarm, intercom necessary for new building
- Upgrades to fire alarm/PA/Intercom
- HVAC on Gym
- Remodel student restrooms on wings
- Tree removal & replanting, cement & bench seating in “Music Park”
- New flooring in Wing __, OP1, OP2,
- Finish campus wide alarms
- Site wide surveillance cameras system (also at baseball field)
- Conversion of old locker room to district staff development center – including new roof, technology components, furniture
- Shade Structures in Quad Area
- Reconstruction of basketball courts
- Library – new carpet, interior paint, new ceiling tiles
- Exterior paint and stucco remain of entire campus
- Replacement of damaged siding on select portable buildings
- Expansion of north parking lot



Washington – Gut & Remodel Student Restrooms



Washington – Expansion of North Parking Lot

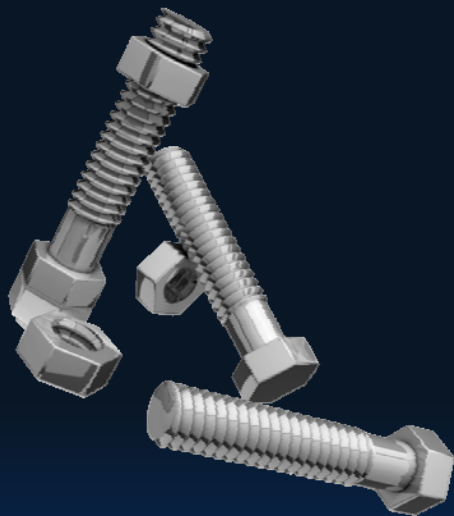


Washington – Starting bench seating in “Music Park”



Grand View Elementary Scope

- Replacement of portable building with new two classroom modular
- Technology, alarm, intercom necessary for new building
- Remodel of student restrooms on Wing
- Expansion of play pit, new play structure
- Expansion of north parking lot
- ADA compliant drinking fountains



Grand View – Foundations for new modular buildings



Three Picture Page Layout



A description of the first picture. You may change this text.

A description of the first picture. You may change this text.



A description of the second picture. You may change this text.

A description of the second picture. You may change this text.



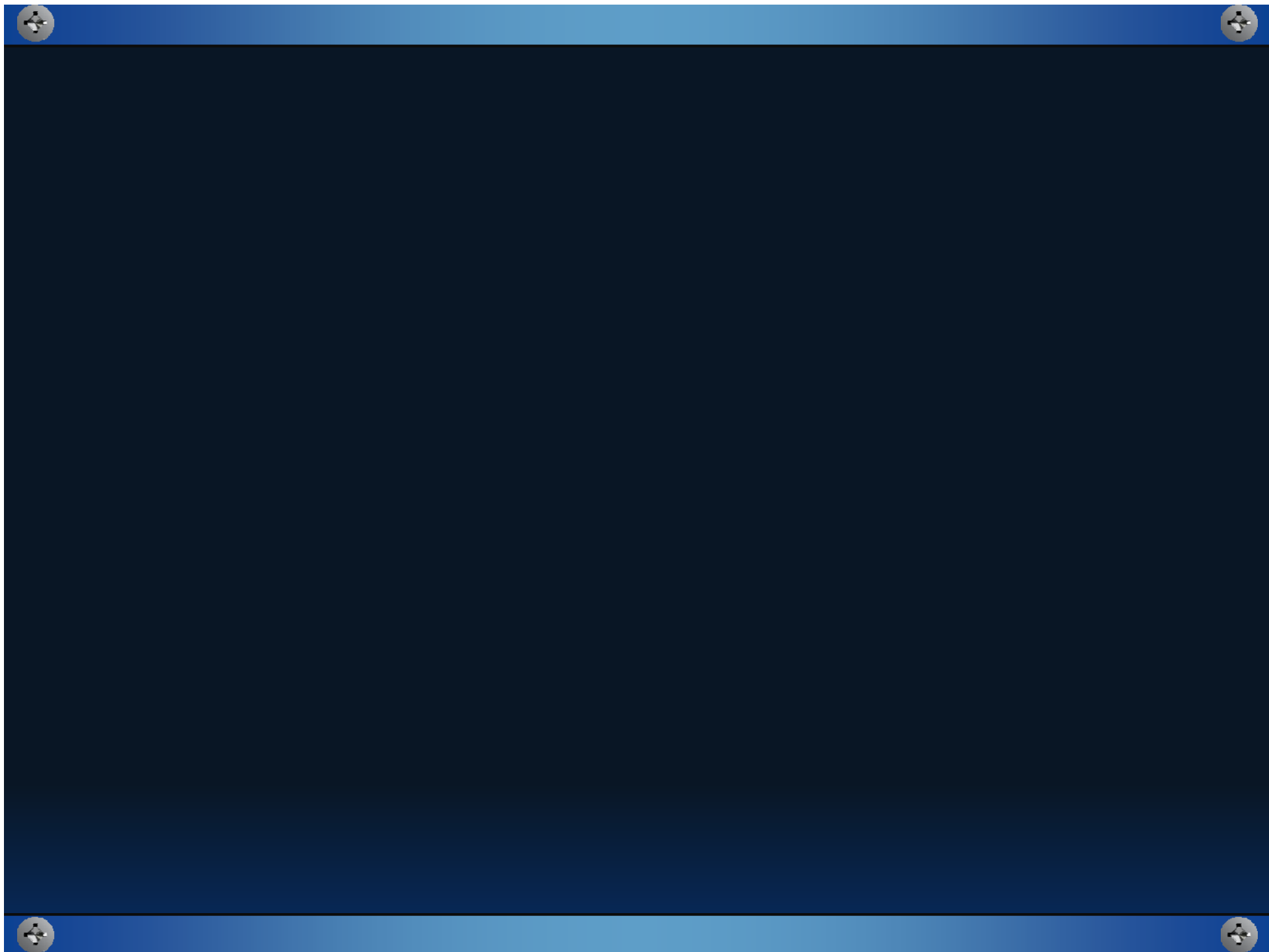
A description of the third picture. You may change this text.

A description of the second picture. You may change this text.

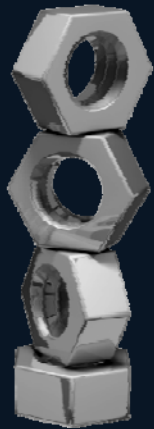
Jefferson Elementary Scope

- Replacement of 5 portable classrooms and the library with new modular buildings
- Upgrade fire alarm/PA/Intercom/Bells
- Remodel student restrooms
- ADA compliant drinking fountains





Lincoln Elementary Scope



- Remodel student restrooms
- ADA compliant student restrooms
- Replace 500' feet of sidewalk
- Resurface north parking lot
- Add tack board to three classroom wings
- Upgrade fire alarm/PA/Intercom/Bells
- Upgrade networking equipment
- Resurface basketball courts

Gut and Remodel Student Restrooms

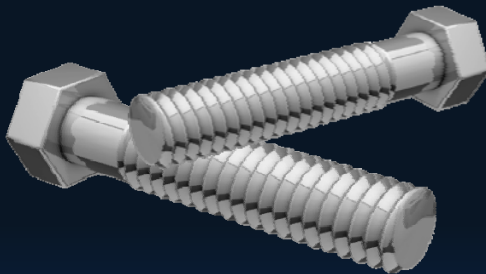


Lincoln – Replace 500' of sidewalk and reconstruction of parking lot



Wilson Elementary Scope

- Replacement of 5 portable classrooms and the library with new modular buildings
- Expanded parking/student drop off area
- Parking lot resurface
- Surveillance cameras and intrusion alarms
- Remodel student restrooms
- Remodel staff restrooms in admin building
- Remodel nursing office to include ADA compliant restroom
- Paint & replace flooring in Admin Bldg.
- ADA compliant drinking fountains
- Upgrade fire alarms/PA/Intercoms/Bells
- Resurface basketball courts



Wilson – Interior Courtyard to be cemented with bench seating around trees



Wilson – Demo for expanded parking and student drop off



Wilson – Gut & Remodel Student Restrooms



Dinuba High School Scope

- New roofs for Industrial Tech (IT) buildings
- Fire proofing of separation walls in IT buildings
- New cooling systems for IT buildings
- Remodel 2 sets of student restrooms
- Drainage work in Quad
- New walk in refrigerator in kitchen
- ADA compliant restroom in kitchen
- Sewer/plumbing work in kitchen



DHS – Reroof Industrial Tech Buildings







DHS – Improved storm drainage in Quad



Timeline



- Contracts Board Approved May 29, 2014
- Notices to Proceed issued effective June 2, 2014
- Harris Construction at DHS due for completion September 15, 2014

Harris committed to having IT classrooms done in time for the start of school.

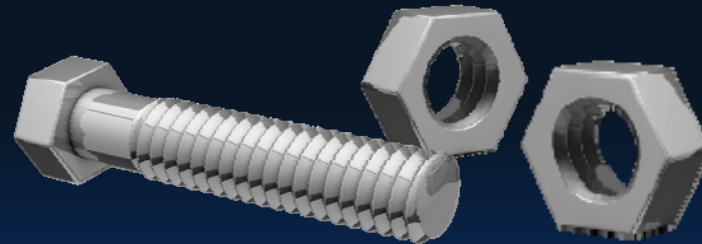
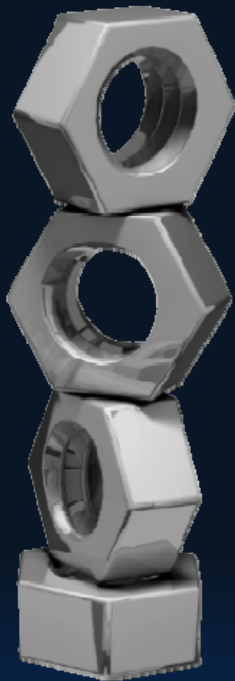
- Micham Construction projects due for completion January 28, 2015

Modular warehouse building at WIS expected to be complete before the start of school.



Next Steps

- Apply for OPSC Fund Release
 - Weekly Owner's Meetings
 - Mondays 2pm Band Room for DHS
 - Tuesdays _____ for all others





Special Recognition

This template contains video elements and is optimized to work with PowerPoint 2010 and newer versions.

Static versions of all layouts are also available.



Alternate **Content Page**

This is the first paragraph you can add text here. This is just a place holder for the first paragraph to show you what the text will look like when you add your own.

This is the second paragraph you can add text here. This is just a place holder for the second paragraph to show you what the text will look like when you add your own.



Agenda or Summary Layout

Title Point 1

Discussion Item One – This is a Placeholder for text
Replace any of the text.

Title Point 2

Discussion Item Two – This is a Placeholder for text
Replace any of the text.

Title Point 3

Discussion Item Three – This is a Placeholder for text
Replace any of the text.

Title Point 4

Discussion Item Four – This is a Placeholder for text
Replace any of the text.

Title Point 5

Discussion Item Five – This is a Placeholder for text
Replace any of the text.

Title Point 6

Discussion Item Six – This is a Placeholder for text
Replace any of the text.

Two Picture Page Layout

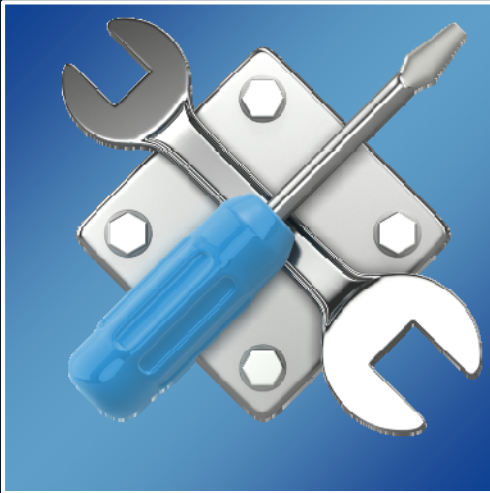


A placeholder for the first picture.
More information can be added
here by changing this text.
Make changes to this text.



A placeholder for the second picture.
More information can be added here
by changing this text.
Make changes to this text.

Three Picture Page Layout



A description of the first picture. You may change this text.

A description of the first picture. You may change this text.



A description of the second picture. You may change this text.

A description of the second picture. You may change this text.



A description of the third picture. You may change this text.

A description of the second picture. You may change this text.

Four Picture Page Layout



A description of the first picture. You may change this text.

A description of the first picture. You may change this text.

A description of the second picture. You may change this text.

A description of the second picture. You may change this text.



A description of the third picture. You may change this text.

A description of the second picture. You may change this text.

A description of the fourth picture. You may change this text.

A description of the third picture. You may change this text.



Bar Graph Page Layout

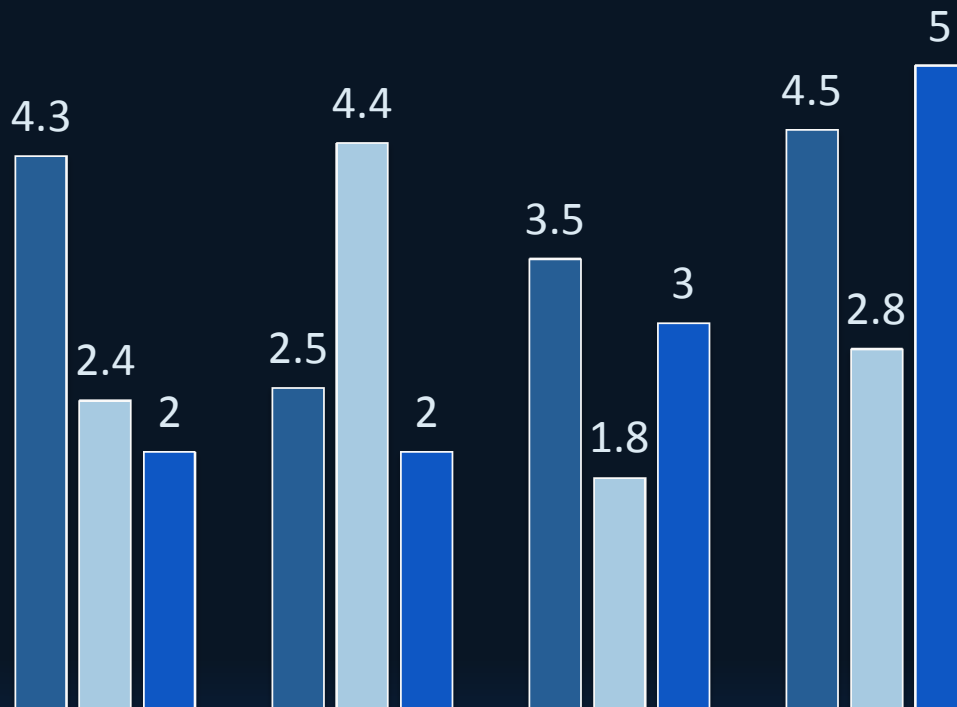
Here is the description of the graph. This chart is compatible with PowerPoint 2007 or later..

Here is some more text. You may delete the graphical elements.



Chart Title

■ Series 1 ■ Series 2 ■ Series 3



Pie Graph Page Layout

Here is the description of the graph. This chart is compatible with PowerPoint 2007 or later..

Here is some more text. You may delete the graphical elements.

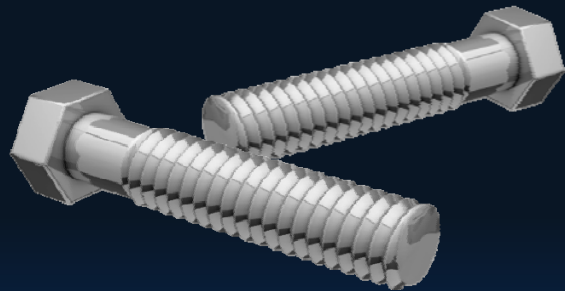
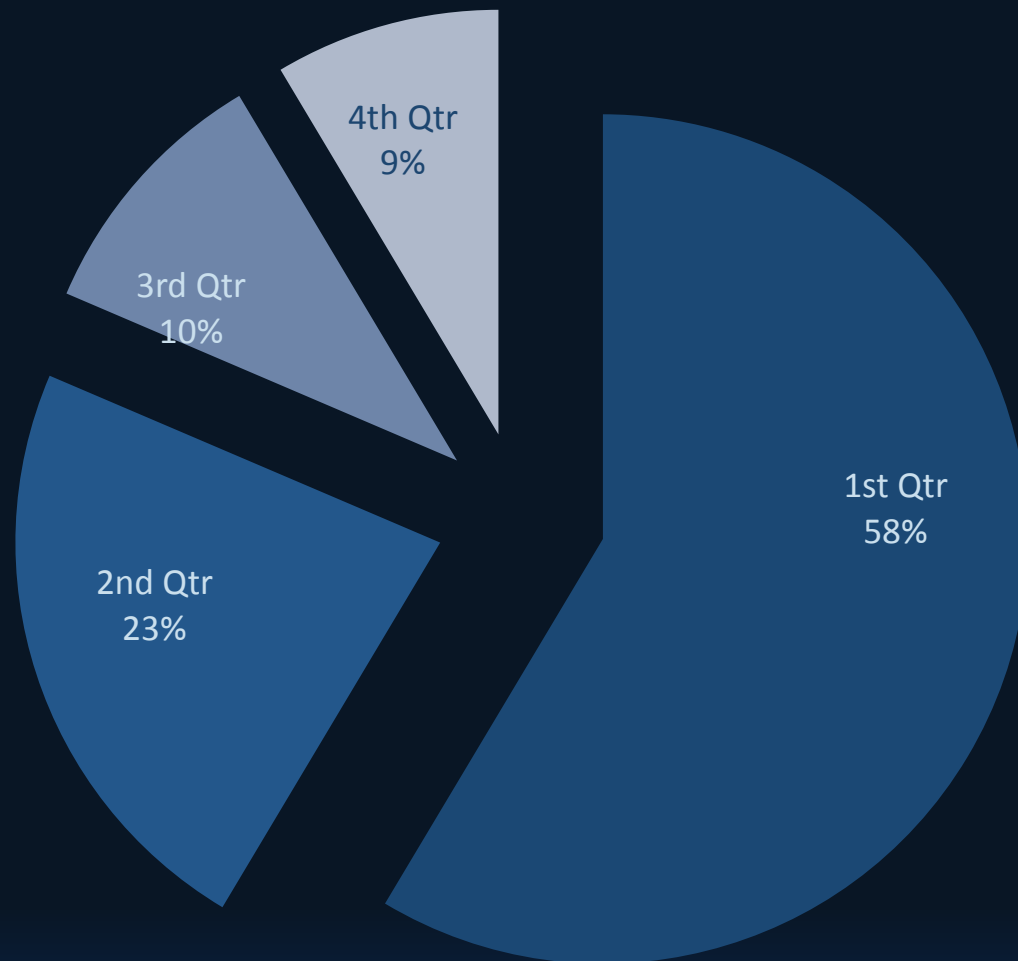


Chart Title



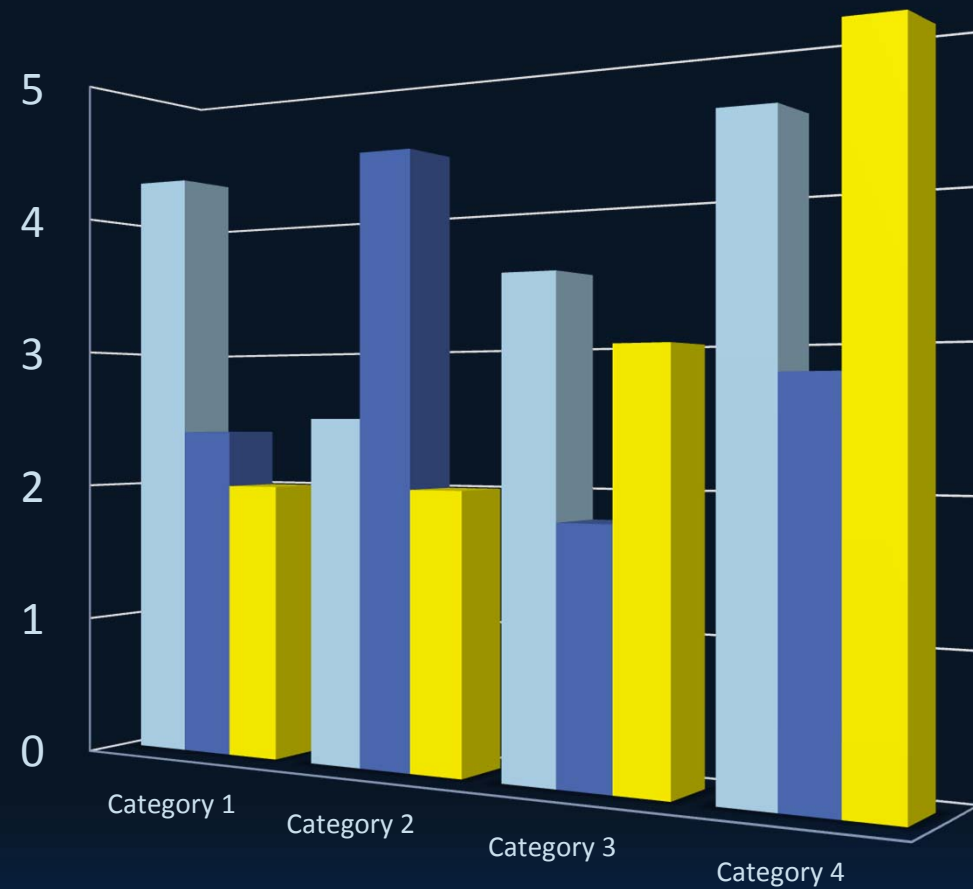
Bar Graph Page Layout

Here is the description of the graph. This chart is compatible with PowerPoint 2007 or later..

Here is some more text. You may delete the graphical elements.



■ Series 1 ■ Series 2 ■ Series 3

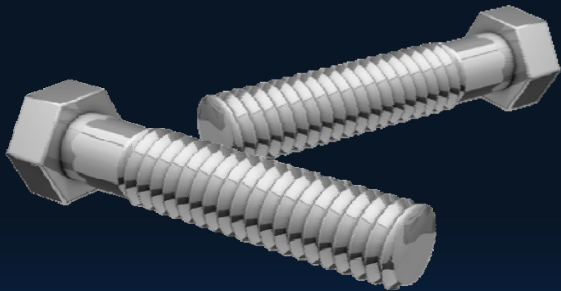
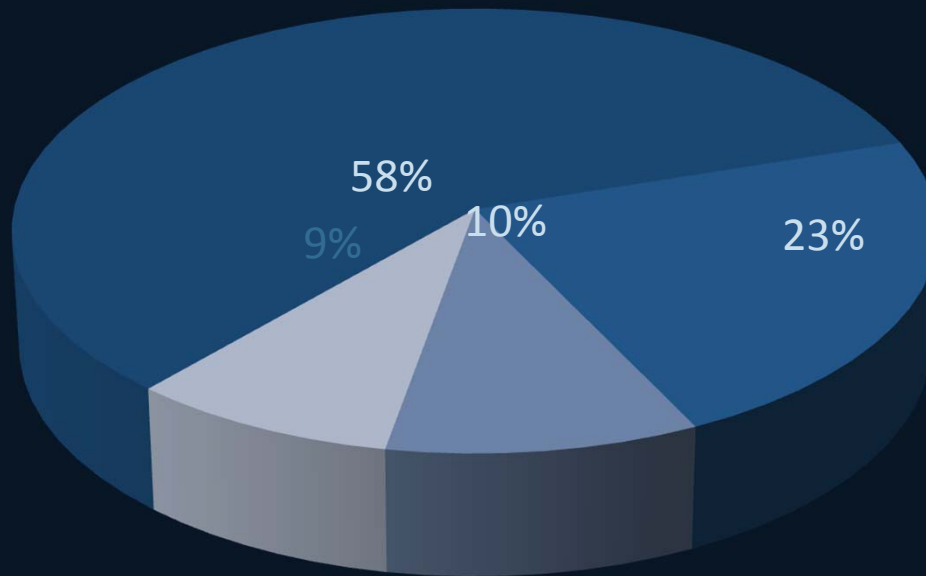


Pie Graph Page Layout

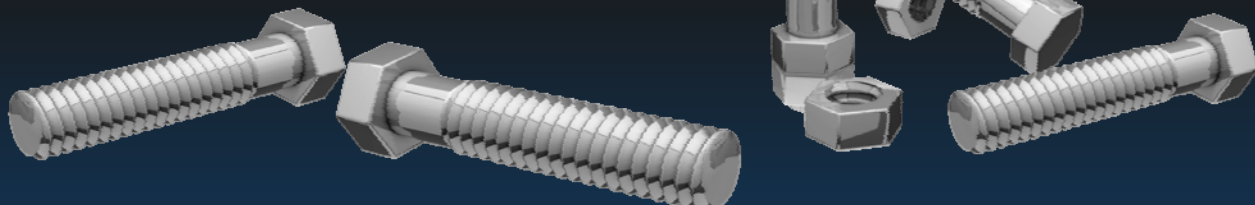
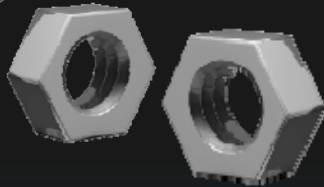
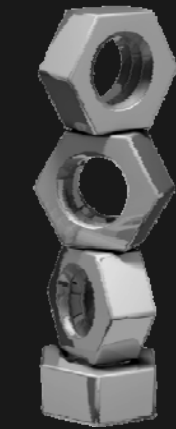
Here is the description of the graph. This chart is compatible with PowerPoint 2007 or later..

Here is some more text. You may delete the graphical elements.

■ 1st Qtr ■ 2nd Qtr ■ 3rd Qtr ■ 4th Qtr



Useful **Clipart** and Images





Questions?
More Information?

PresenterMedia.com
support@presentermedia.com

4416 S. Technology Dr
Sioux Falls, SD 57106