

**Project Observation Report**

Project Name:	Tri Tech East Building C 1.5	Project No.	2208
Report #:	33		
Observation Date:	5-17-23	Last Report:	5-10-23
Prepared By:	Steve Mallory, AIA	Contractor:	Banlin

**Weather:**

Sunny	calm	69°	From: 8:20am To: 8:55am
-------	------	-----	-------------------------

**Construction Activity Observed:**

Schedule Activity No.	Work in Progress
	Plumbing the Kennel room manifold
	Wiring at the shop's south wall
	Low voltage
	Fencing, interior and exterior
	Countertops

**Labor Resources Observed:**

Contractor-Quantity	Contractor-Quantity
Banlin – 1+1	Casework-2
Plumbers – 2	Electrician – 3
Fencing - 4	Low voltage - 2

**Observed Equipment on site:** Trailers, utility trucks, 3 scissor lifts, tracked skid loader, heater/tank

**Others/ Inspectors on site:** -

**Check-in:** Checked in with Matt of Banlin.

**Field Discussions:** Paving and the striping is complete. Three transom lights over the main entry and the interior vestibule sidelites remaining. Fencing and gates on-going at the standpipe and the southeast corner gate at the exterior. Landscaping later this week. Restrooms complete except ceiling work. The ceiling panels are currently about 75% and they will load into the grid later today. The electrical panel guts are installed. Fire alarm systems wired but not complete FRP, VCT and base are complete. Interior doors and hardware installed, except one door. Low voltage work nearly complete. RTUs are now on the roof. Computer cabinet is wired and the water heater, softener and janitor sinks are set, they are currently installing the two sinks in the shop. Dog wash stations are in place. Kennel room janitor's sink is installed and the awnings are installed. Transformer installed in the shop.

Percent Complete:	Pay-app (#7)	Completion Date:
Contract Amount	\$3,774,429.00	Original Contract NTP: Sept 21, 2022
Change Orders:	\$43,341.06	
Adjusted:	\$3,817,770.06	
Completed:	\$2,891,929.00, with \$144,596.45 retained	
Current Payment	\$606,748.70 (Incl. WSST)	Change Order date adjustment: 0 days
Overall % Complete:	71.2%	Expected Project End Date: June 15, 2023

**Change Order Breakdown:** ---.

**Inspection Reports:** Going well.

**As-Builts:** No issues.

**Preparers Comments:** The work is progressing very well. Many portions of the work to be complete this week or early next week. Three fire alarm items to be very late.

**Construction Site Photos:**



South elevation



Site entry



Southeast corner of the building and Southwest peninsula



Southeast site



Looking northeast at the site



East elevation



Northeast site



Building from the northeast



Looking northwest at the northeast corner of the building



Looking north at the northeast site



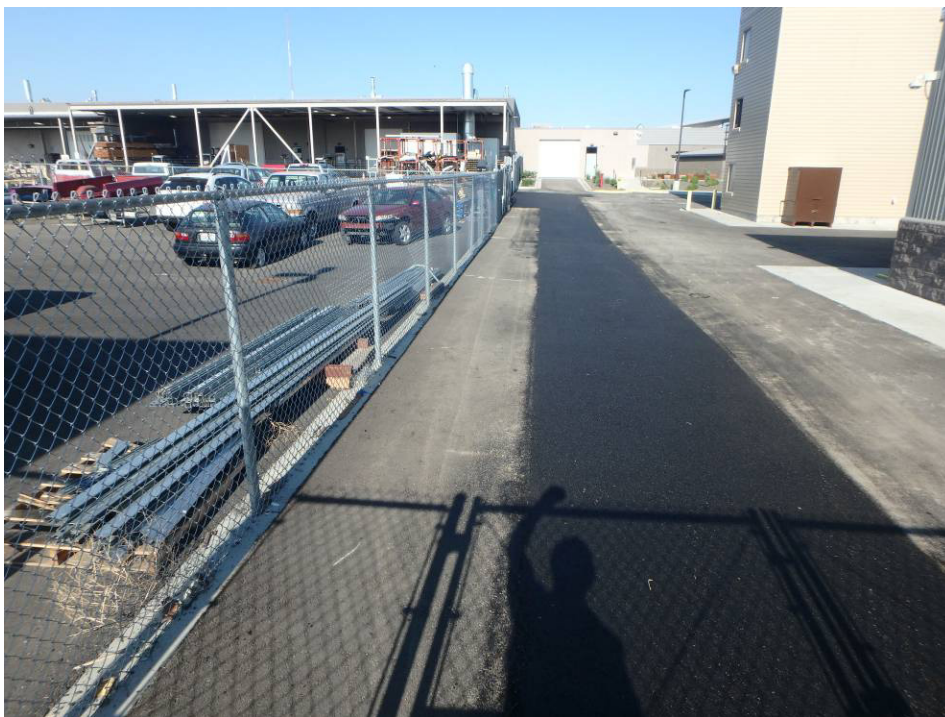
Looking south along the central curb



North site



Alleyway – looking west



Alleyway – looking west



Alleyway – looking east



West elevation



Looking south along the west property line and the back of the building



Looking south along the front sidewalk



Northeast door



East elevation looking south



Main entry doors – looking south



Main corridor looking west at the new ceiling work



Main entry – looking north



Main entry doors



Restroom partitions and plumbing fixtures



Restroom fixtures



Wired server rack



Mechanical room plumbing



Looking north along the shop's east wall and lockers with diamond plate top



Looking northwest towards the shop's transformer mounted on the wall



Looking north into the shops northeast corner



Looking east into the shops northeast corner



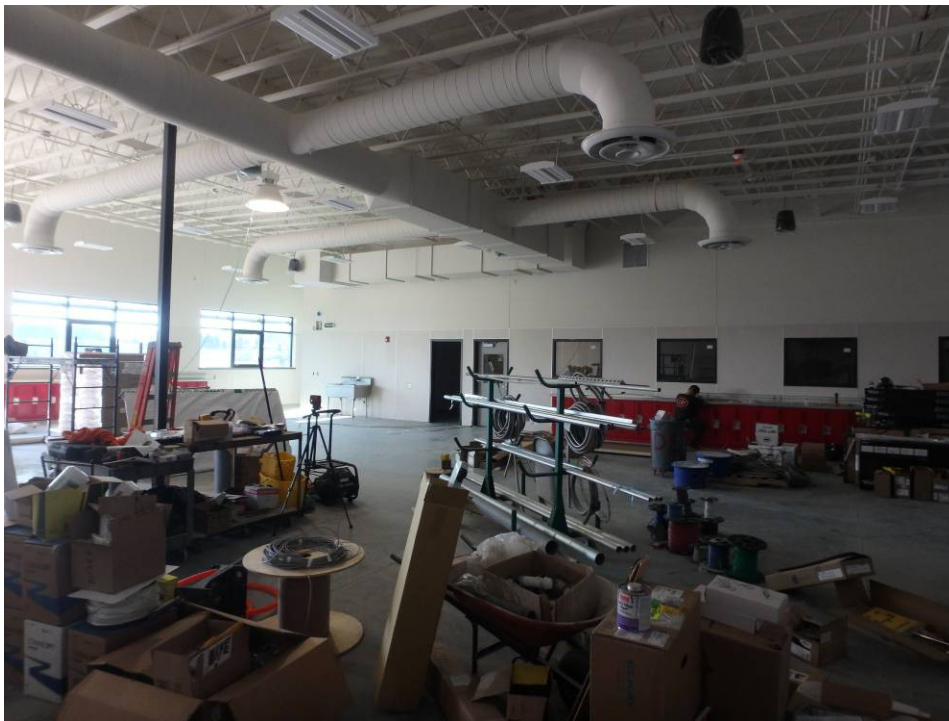
Looking west along the north wall of the shop



Looking south at the shop along the west wall HVAC lights and speakers



Looking east along the shop



Looking southeast at the shop along the south wall HVAC lights and speakers



Looking west along the south wall of the shop and lockers



Looking northwest across the shop at the northwest corner – HVAC, lights and speakers



Looking north across the shop



Looking west across the north classroom north wall



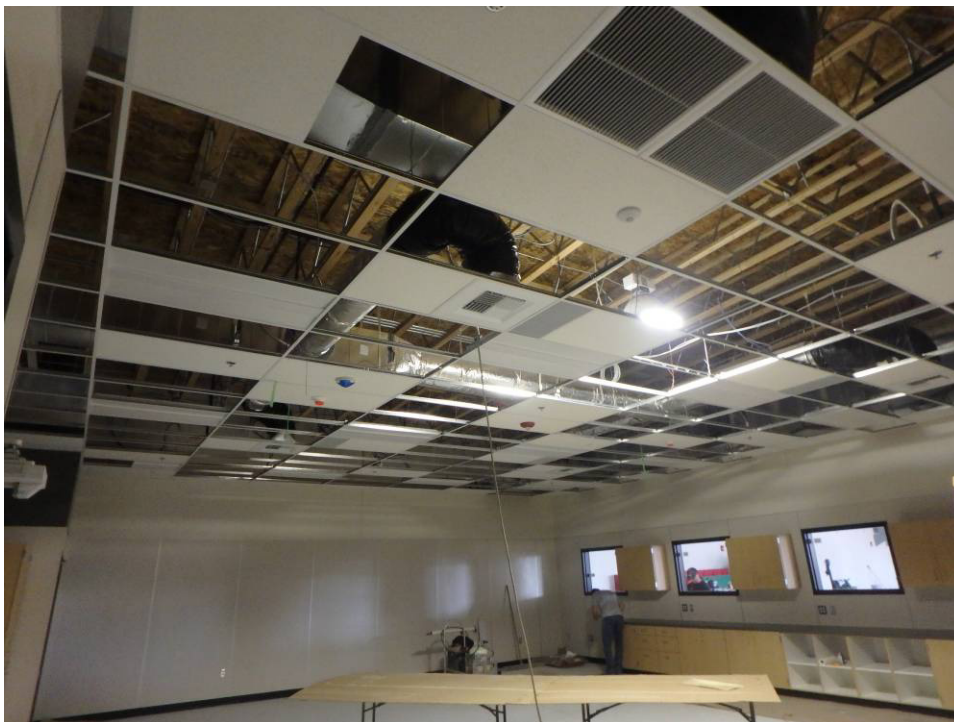
Looking southwest at the southwest corner of the north classroom



Looking west across the north classroom



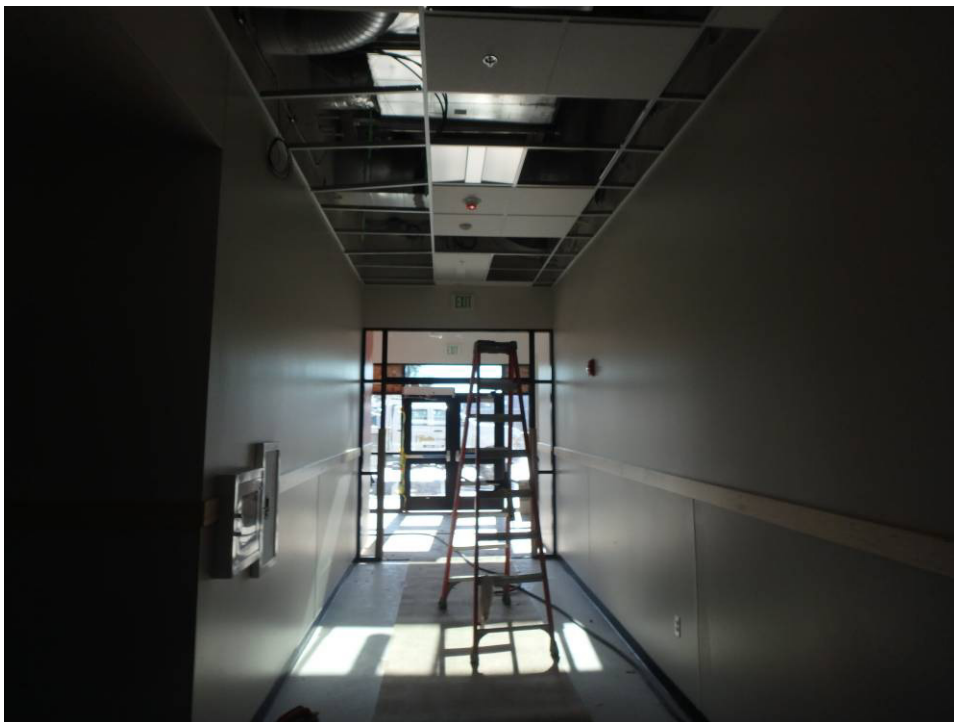
Looking northwest at the northwest corner of the north classroom



North classroom ceiling



Looking west at the main east-west corridor



Looking east at the main east-west corridor



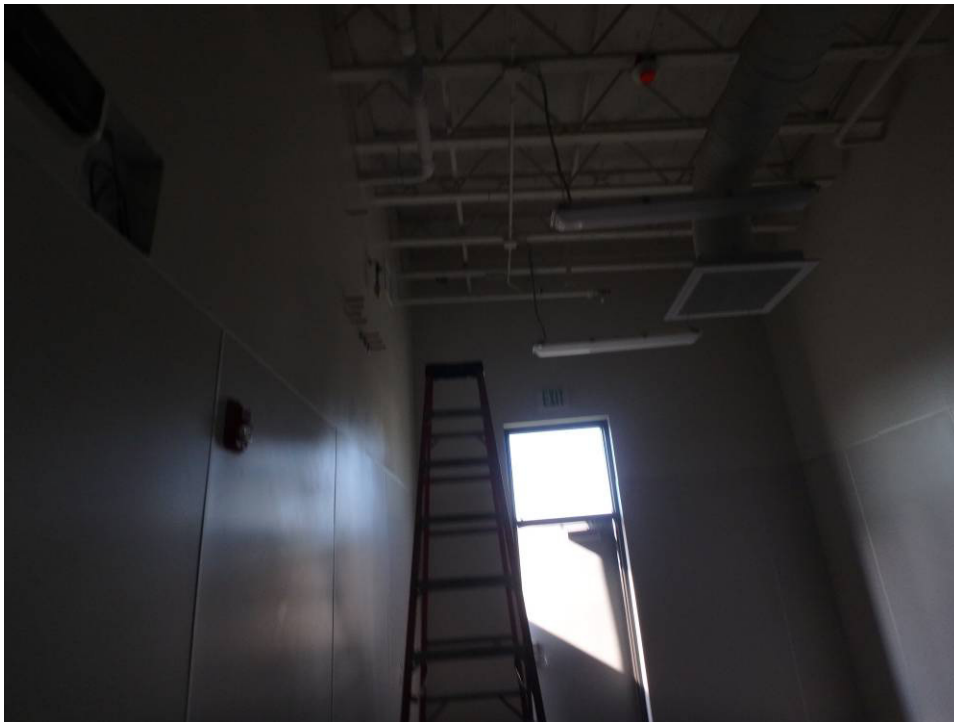
New office flooring and base



Dog wash stations



Exam room casework



Kennel room area of the manifold



Looking at the east wall of the Lab



East Sink



Looking west at the dogwash stations



Looking at the casework in the south wall of the south classroom



Looking west at the casework in the southwest corner of the south classroom



Looking at the west wall of the south classroom



Looking at the casework in the southwest corner of the south classroom



Looking at the casework in the northwest corner of the south classroom



Looking at the east wall of the south classroom



Looking south at the casework in the southwest corner of the south classroom



Looking north at the front sidewalk



Looking west at the south property line



Main entry



Front elevation