

WORK IN PROGRESS

For the period covering 4/25/22 through 5/6/22, the following site activities were observed:

- Continued excavation for grade beams and pier caps in Academic and Fine Arts Wings
- Continued setting vapor barrier and reinforcing steel at grade beams and pier caps, and concrete placement as available
- Continued excavation and installing underground MEP systems, including electric feeders across site and into Area E.
- SOG prep and placement of Area D slab

LOOK A HEAD

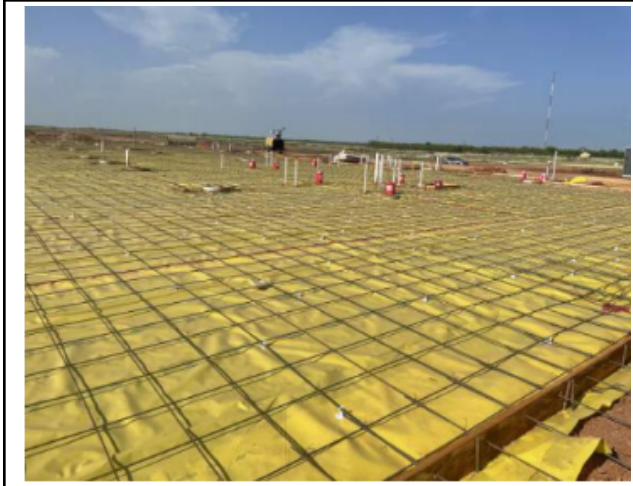
The following activities are projected to be in progress over the next two weeks:

- Continue excavation for grade beams and pier caps in Academic and Fine Arts Wings
- Continue vapor barrier and reinforcing steel installation at grade beams and pier caps into Athletic wing
- Pour grade beams and pier caps
- Continue underground MEP systems
- Continue with site utility infrastructure work
- Site grading west parking lot

SITE AERIAL



Area D SOG Pour Finishing



Area D SOG pre-pour



