

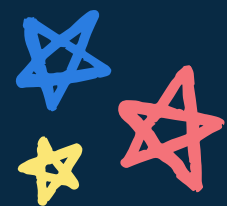
Franklin Special School District

# District Improvement Plan

2023-2024 SCHOOL YEAR



Goal 1:  
Increased  
Academic  
Achievement  
in ELA  
(English  
Language  
Arts)




IMPLEMENT EFFECTIVE  
STANDARDS-ALIGNED TIER 1  
INSTRUCTION



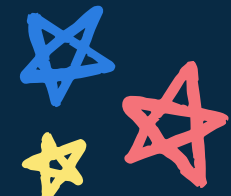
ASSIST SCHOOL LITERACY TEAMS



SUPPORT PLANNING AND  
INSTRUCTION FOR STUDENTS  
WITH CHARACTERISTICS OF  
DYSLEXIA



Goal 2:  
Supporting  
Student  
Well-being



UTILIZE A TIERED BEHAVIOR  
SUPPORT PROGRAM AT EACH CAMPUS



ENHANCE COMMUNITY RESOURCES




UTILIZE A PROGRESSIVE TRUANCY  
INTERVENTION PLAN CONSISTENT  
WITH STATE LAW AT EACH CAMPUS



INCREASE STUDENT ADVOCACY  
OPPORTUNITIES



ADVANCE THE WORK OF THE  
DISTRICT'S THERAPY DOG PROGRAM



Goal 3:  
Supporting  
EL (English  
Learners)  
Subgroup



IMPLEMENTING AND MONITORING  
THE USE OF HIGH-QUALITY  
INSTRUCTIONAL MATERIALS



EL PROFESSIONAL LEARNING



INCREASE TIER I PARTICIPATION  
AMONG EL STUDENTS



INCREASE ACADEMIC  
ACHIEVEMENT AND GROWTH OF  
EL STUDENTS ON THE STATEWIDE  
ASSESSMENT



Goal 4:  
Targeted  
Educator  
Professional  
Development



PROMOTE LEADERSHIP DEVELOPMENT



ENHANCE PROFESSIONAL LEARNING  
COMMUNITIES (PLC'S)



PROVIDE HIGH-QUALITY MATERIALS  
MONITORING AND SUPPORT



IMPLEMENT DIGITAL RESOURCES  
AND INSTRUCTIONAL TECHNOLOGY  
PROFESSIONAL LEARNING



PROVIDE MATH SUPPORT AND  
PROFESSIONAL LEARNING



ADVANCE DEI PROFESSIONAL  
LEARNING



Goal 5:  
Supporting  
Students  
with  
Disabilities  
(SWD)



INCREASE PARTICIPATION OF SWD IN THE  
REGULAR EDUCATION ENVIRONMENT  
(AGES 5-21)



INCREASE PARTICIPATION OF SWD IN THE  
REGULAR EARLY CHILDHOOD PROGRAM  
(AGES 3-5)



INCREASE THE PERCENTAGE OF  
PRESCHOOL CHILDREN WITH AN IEP  
DEMONSTRATING IMPROVED SOCIAL  
EMOTIONAL SKILLS, ETC.



IMPROVE THE PERCENTAGE OF STUDENTS  
EVALUATED WITHIN 60 DAYS OF  
RECEIVING PARENTAL CONSENT FOR AN  
INITIAL EVALUATION



ENCOURAGE PARENTAL INVOLVEMENT OF  
SWD ACROSS THE DISTRICT





To see the full  
District  
Improvement Plan,  
click below or scan  
the QR code:

[LINK TO CURRENT PLAN](#)

