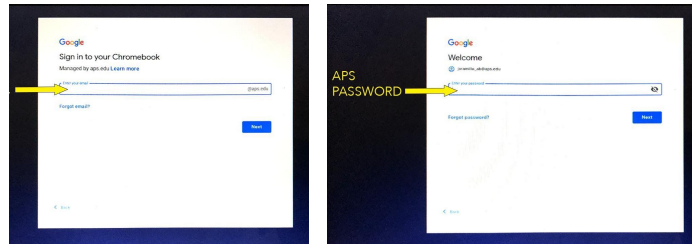


Logging in to your Chromebook and accessing WiFi

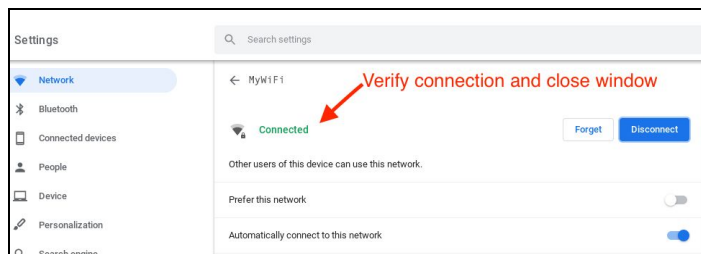
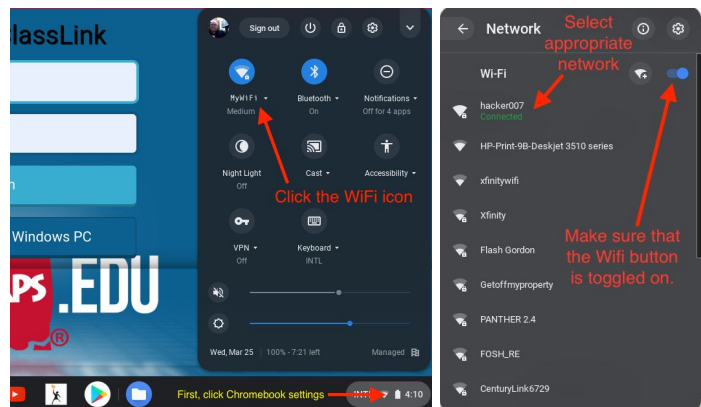
- **Login to your Chromebook**

- Students will log in with their 9-digit Student ID (e.g. 9812341234@aps.edu).
- Click Next and enter your password (please email servicedesk@aps.edu for help with your student password) include your name, contact number, and student ID.

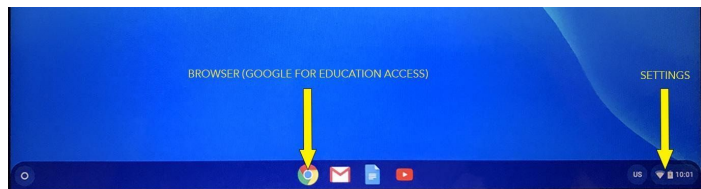


- **Click on Chromebook status box (settings) to connect to WiFi**

- Click WiFi icon to connect to WiFi
- Make sure that your WiFi button is toggled
- Select your WiFi connection
- Enter your WiFi password
- You'll now see a verification screen showing that you are connected to WiFi



- You can now **visit the World Wide Web with the Chrome browser.**



- To **log out of your Chromebook**, click the status box (settings) on the lower right corner and select "Sign Out" (may look different in different Chromebook hardware devices).