

# Local Control Funding Formula



**REGIONAL INPUT SESSIONS**

**AUGUST 2013**

# Major Shifts Made by the Local Control Funding Formula (LCFF)

2

Before LCFF	After LCFF
Revenue Limits	LCFF base funding differentiated by grade span
State categorical programs with temporary tiered flexibility	Unduplicated pupil weights, including concentration funding
K-3 class size reduction limited funding with unlimited class sizes	K-3 class size reduction, target 24:1
Accountability and performance process separate from funding	Local Control Accountability Plans required

## Unchanged

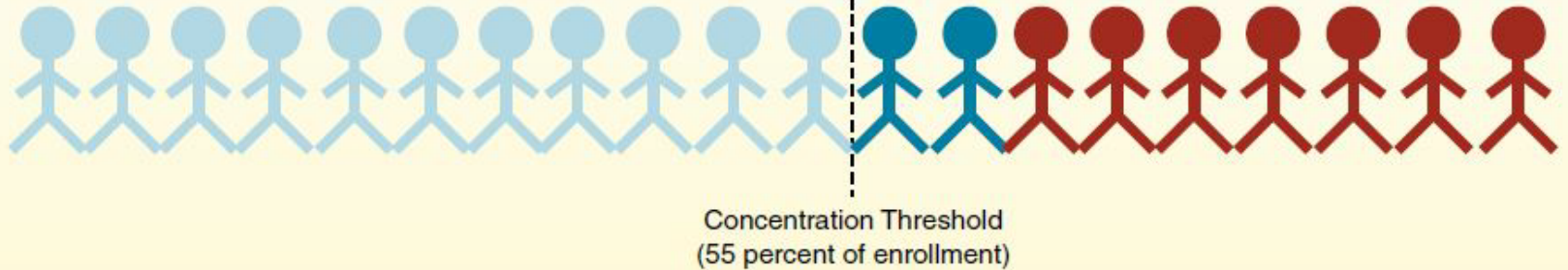
- Financial audits
- Compliance with *Williams*
- School Accountability Report Cards
- Federal funding, planning, and accountability requirements
- Local educational agency as subgrantee of the state




# How LCFF Works

3

## Illustration of How LCFF Works

*Elementary District*



		Funding Each Student Generates				
	Student	Base K-3 Rate	K-3 Adjustment	EL/LI Supplement	EL/LI Concentration	Total *
	EL/LI	\$6,845	\$712	\$1,511	—	\$9,068
	EL/LI	\$6,845	\$712	\$1,511	\$3,779	\$12,847
	Non-EL/LI	\$6,845	\$712	—	—	\$7,557

\* LCFF target, including 2013-14 COLA; 2013-14 funding levels are significantly below targets

EL/LI = English learner/low-income.

Source: Legislative Analyst Office, *An Overview of the Local Control Funding Formula*, June 29, 2013

# Timing of LCFF Implementation

4

- **Begins in 2013-14**
  - Transition year
- **Regulations and templates for LCFF and Local Control Accountability Plan (LCAP) in place in time for 2014-15 budget and planning cycle**
- **Expect full implementation by 2020-21**
  - Intervening years will phase in funding with increases distributed based on LCFF targets
  - Class size reduction targets phased in as funding increases

# State Board of Education LCFF Tasks

5

- AB 97 (Chapter 47, Statutes of 2013) signed by Governor Brown on July 1, 2013 specifies implementation requirements for LCFF
- Tasks the State Board of Education with adoption of:
  - **Regulations** on or before January 31, 2014 to guide use of funding (E.C. 42238.07)
  - **Templates** for Local Control Accountability Plan and spending plan by March 31, 2014 (E.C. 52064)
  - **Rubrics** for evaluation of improvement and intervention needs by October 1, 2015 (E.C. 52064.5)

# Comments

6

- **Comments are limited to two minutes per speaker**
- **Comments are organized into three areas:**
  - LCFF Budget and Funding Use
  - Local Control Accountability Plans
  - Transparency and Community Involvement

# Comments

7

# Feedback and Information Opportunities

8

**Email comments to: [LCFF@wested.org](mailto:LCFF@wested.org)**

**Updates from the California Department of Education –  
[www.cde.ca.gov](http://www.cde.ca.gov)**