

An aerial photograph of the Letchworth Central School District campus. The image shows a large, multi-story school building with a grey roof and brick accents. To the left of the building is a red running track and a green baseball field. In front of the building is a large, paved parking lot with many yellow-painted parking spaces. The campus is surrounded by green fields and trees. In the background, there are more fields and a line of trees under a clear sky.

Letchworth CSD Board of Education Meeting 2020 Capital Improvement Project

HUNT
Turner

ENGINEERS | ARCHITECTS | SURVEYORS

10/12/2021



Introductions

- Turner Construction
 - Michelle Miller – Preconstruction
 - Mark DiMartile – Project Superintendent
- HUNT E|A|S
 - Shannon Davis – Project Manager
 - Jake Zurlick – Project Architect



Design Process Update

How did we get here?

- BCS
 - ✓ Field work
 - ✓ Meetings with district staff & end users
 - ✓ Board presentations
- Pre-referendum planning
- Successful Vote
- Design phase began in January
 - ✓ Field trips
 - ✓ Design meetings with district & end users: STEAM, Nurse, Athletics, ES Staff, Facilities
 - ✓ Classroom observation
- September SED submission



Major Scope Items - K-12 Building



Nurse's Suite



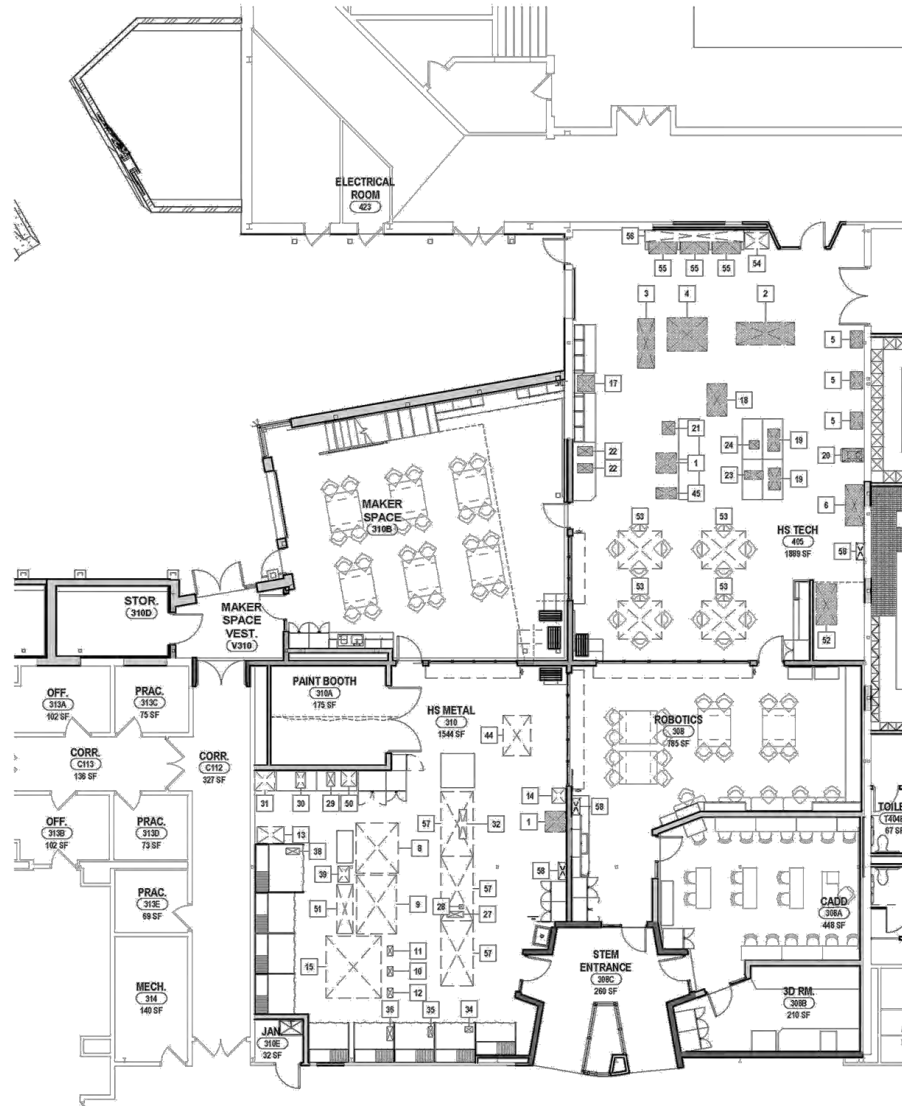
Major Scope Items – K-12 Building



MS Locker Room



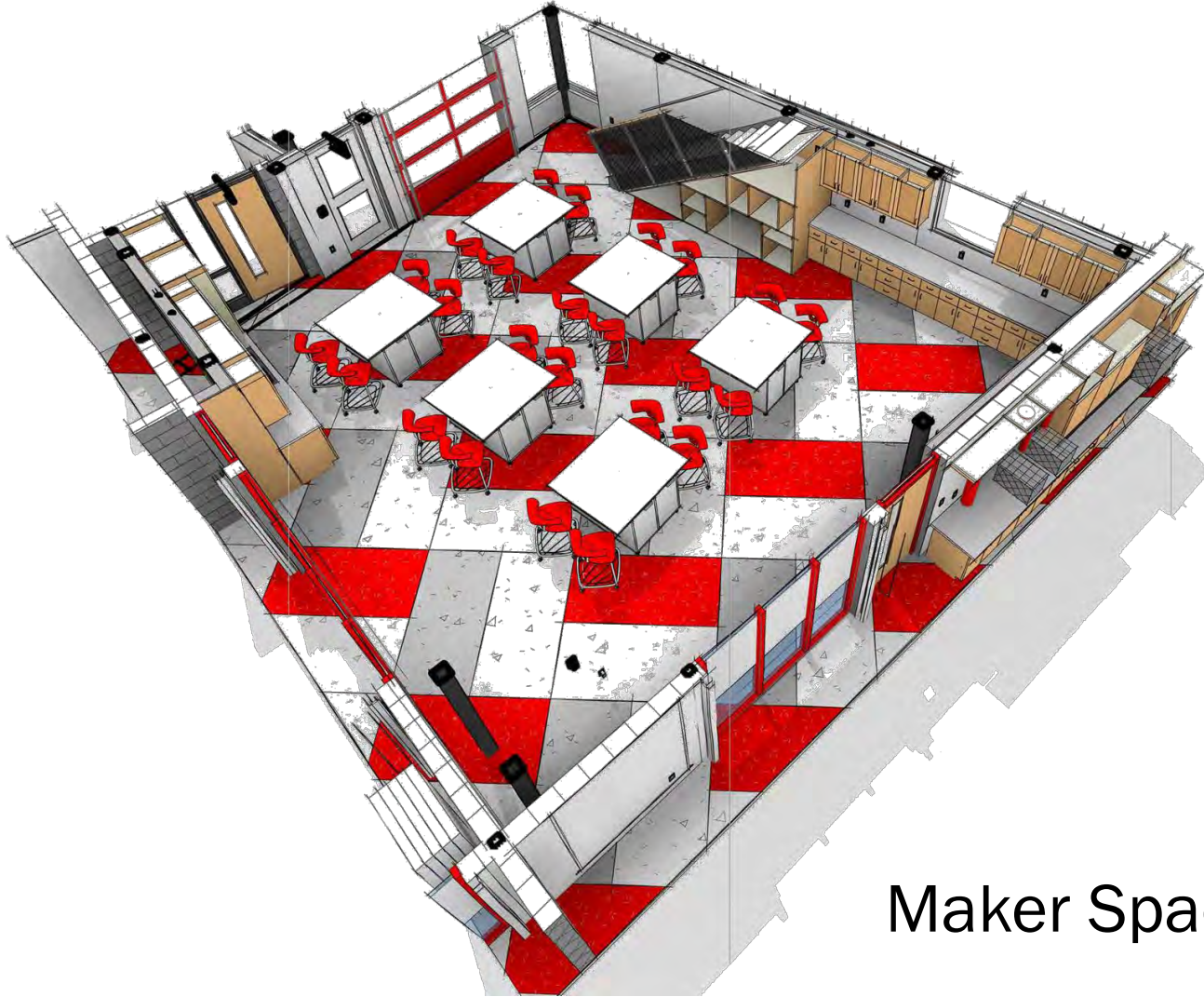
Major Scope Items – K-12 Building



Innovation Center
Overall Plan



Major Scope Items – K-12 Building



Maker Space



Major Scope Items – K-12 Building



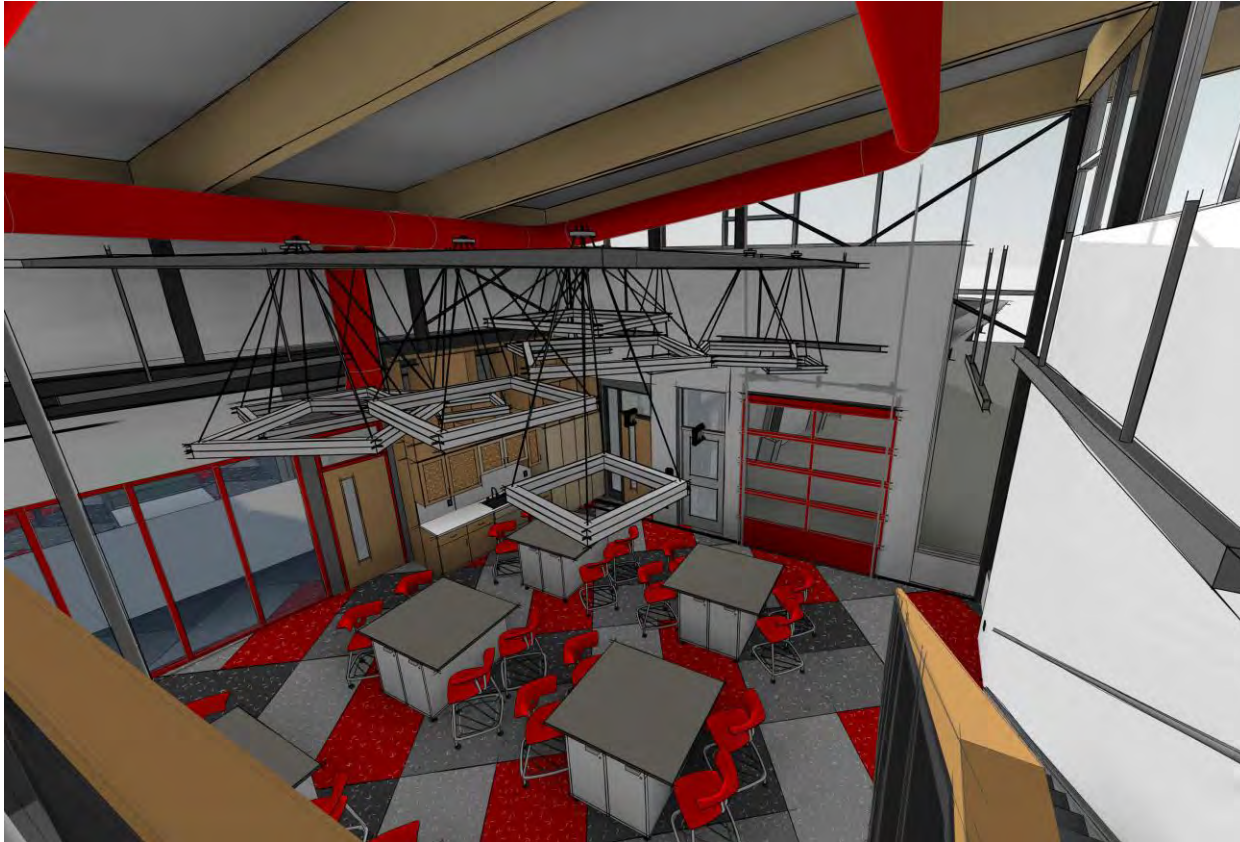
Maker Space – looking toward the Mezzanine stairs



Maker Space – looking toward the Mezzanine & Wood Shop



Major Scope Items – K-12 Building



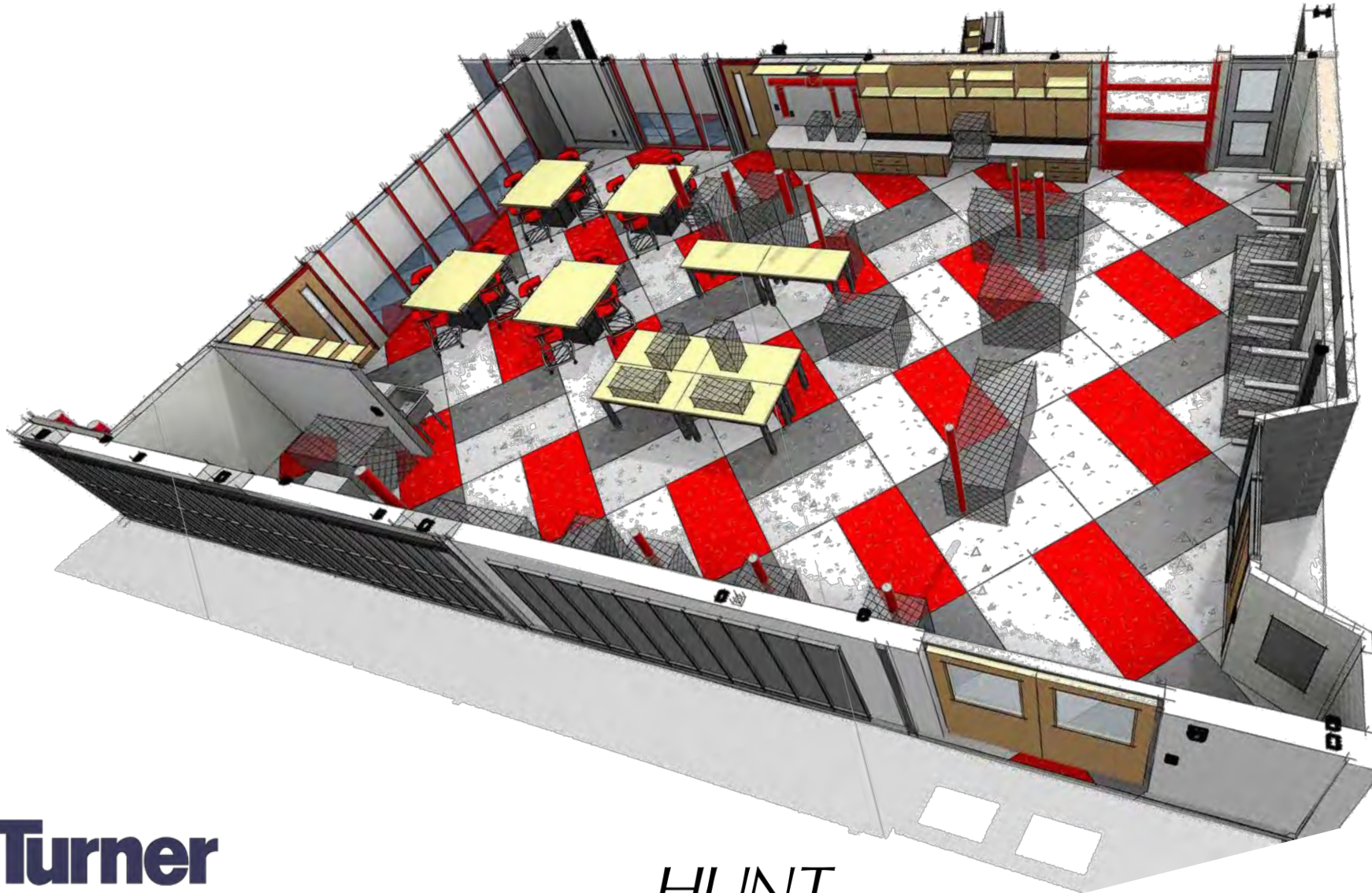
Maker Space – looking down from the Mezzanine



Maker Space – looking toward the Metal Shop



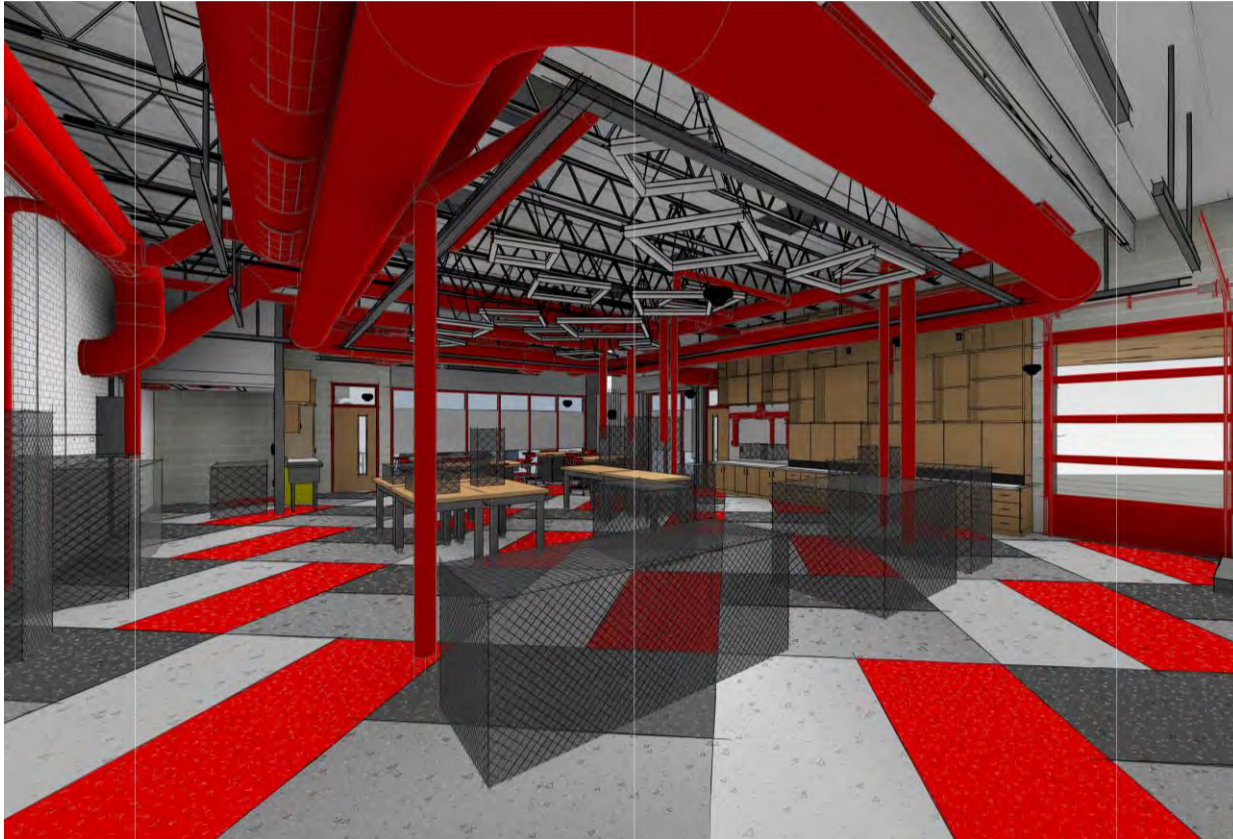
Major Scope Items – K-12 Building



Wood Shop



Major Scope Items – K-12 Building



Wood Shop – looking toward Robotics



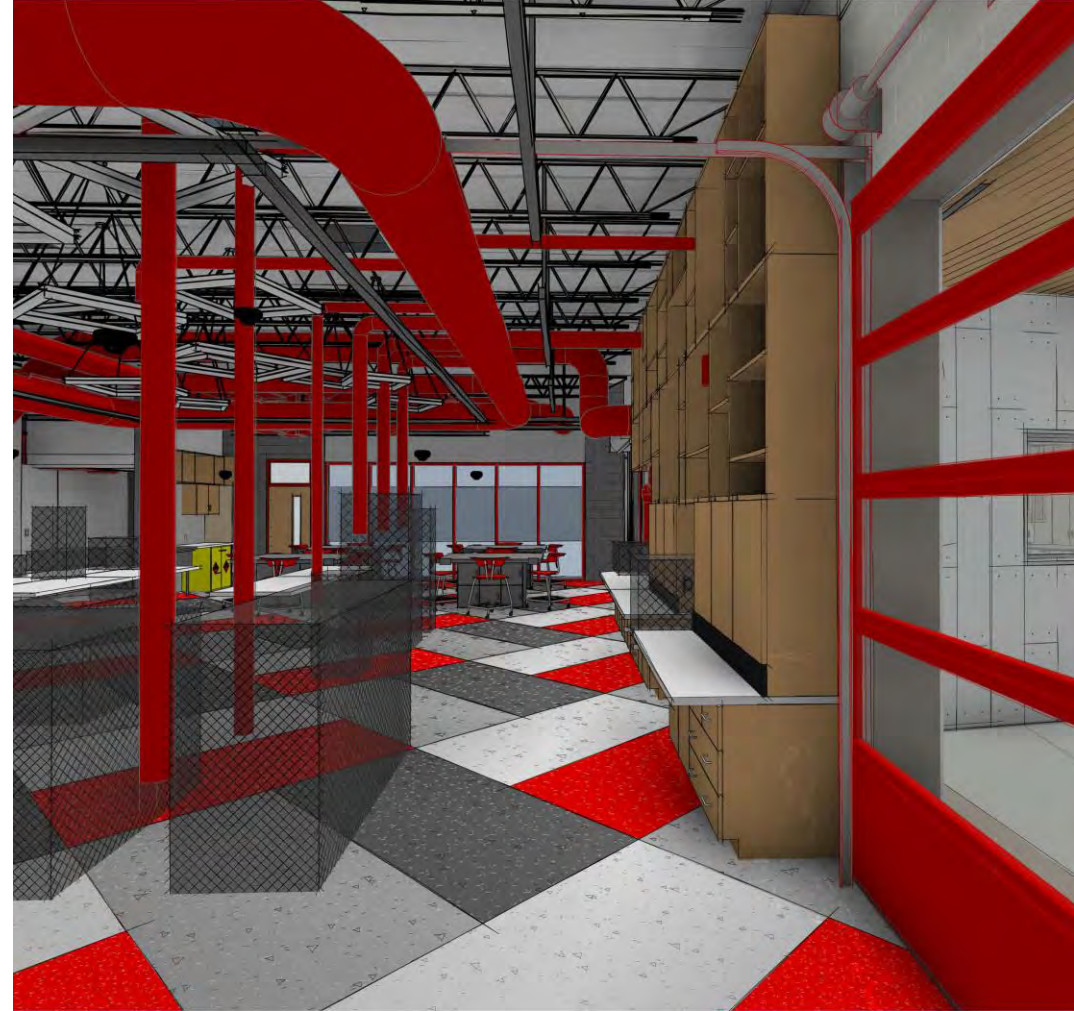
Wood Shop – looking toward Robotics



Major Scope Items – K-12 Building



Wood Shop – looking toward the exterior



Wood Shop – looking toward the Maker Space



Major Scope Items – K-12 Building



Robotics – looking toward Metal Shop



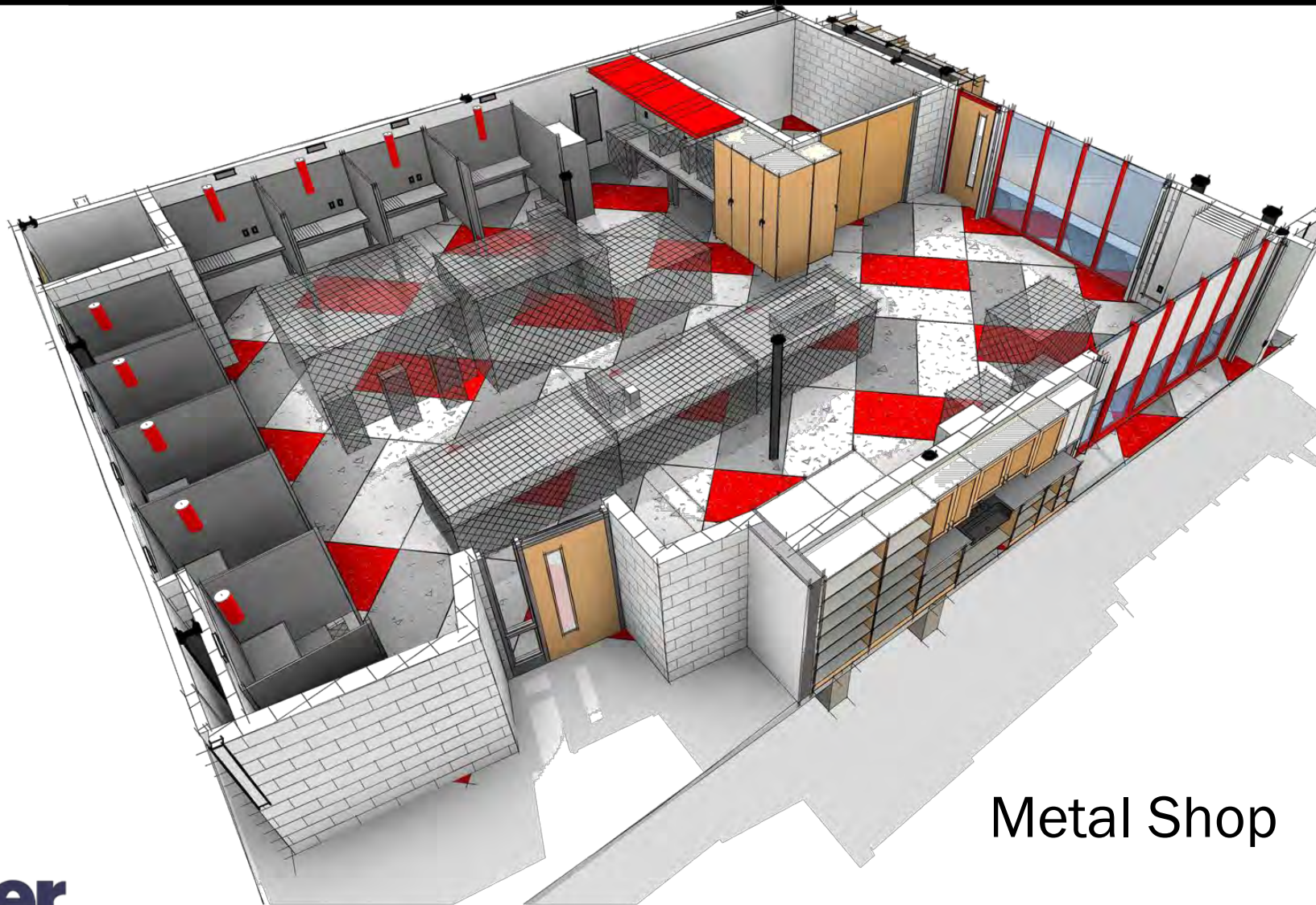
Robotics – looking toward soldering stations



Robotics – looking toward entrance



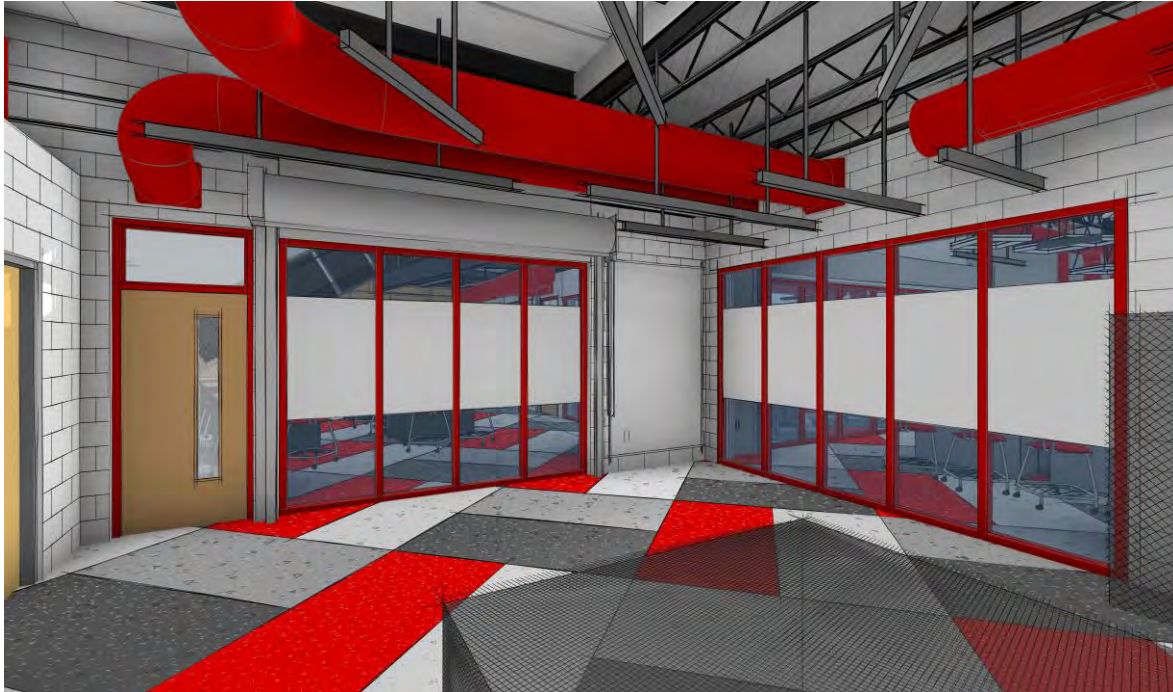
Major Scope Items – K-12 Building



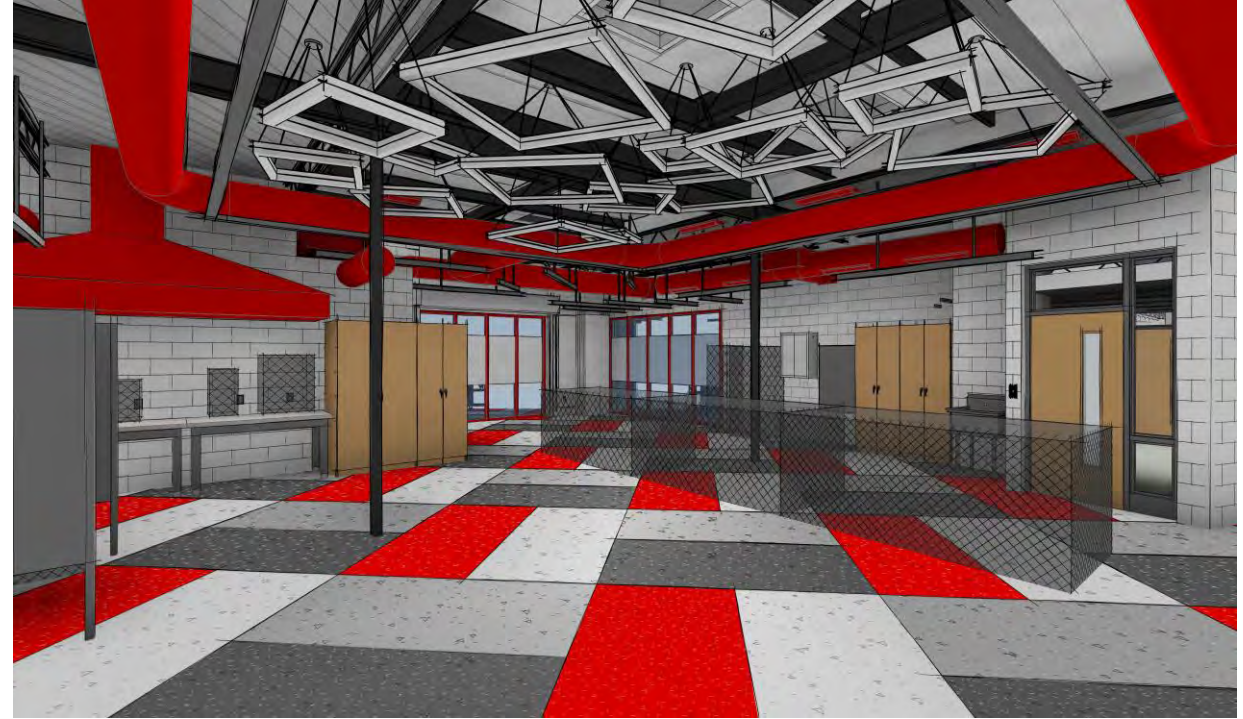
Metal Shop



Major Scope Items – K-12 Building



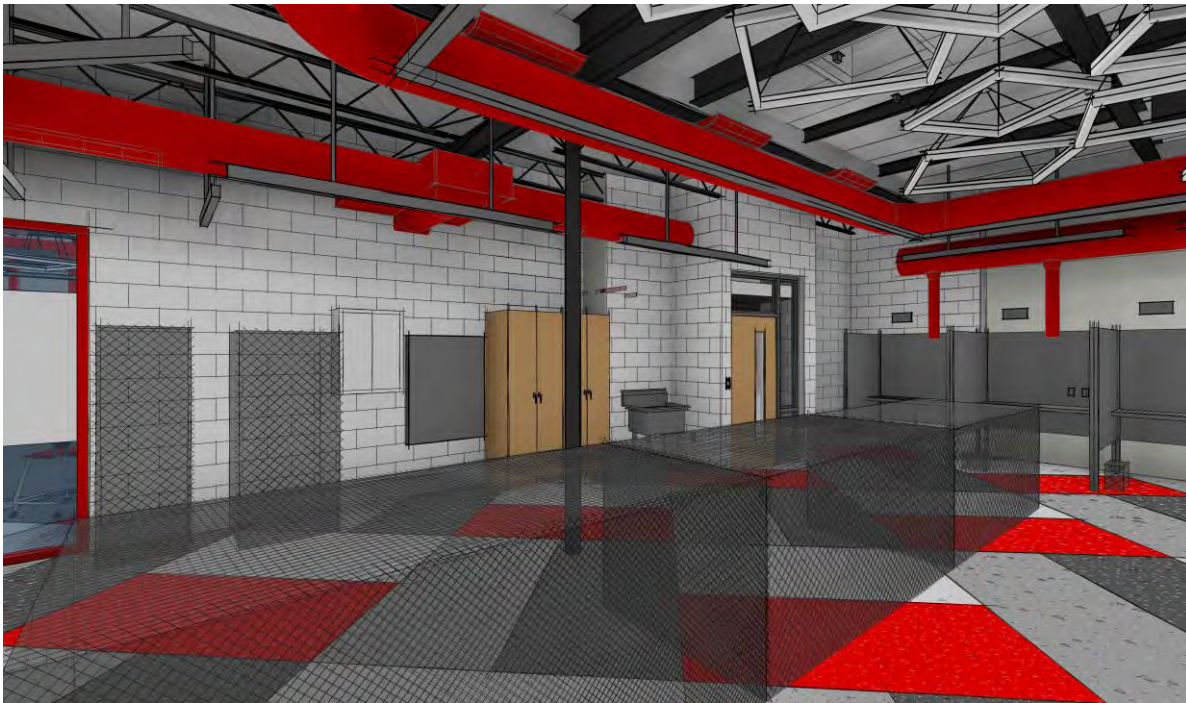
Metal Shop – looking toward the Maker Space



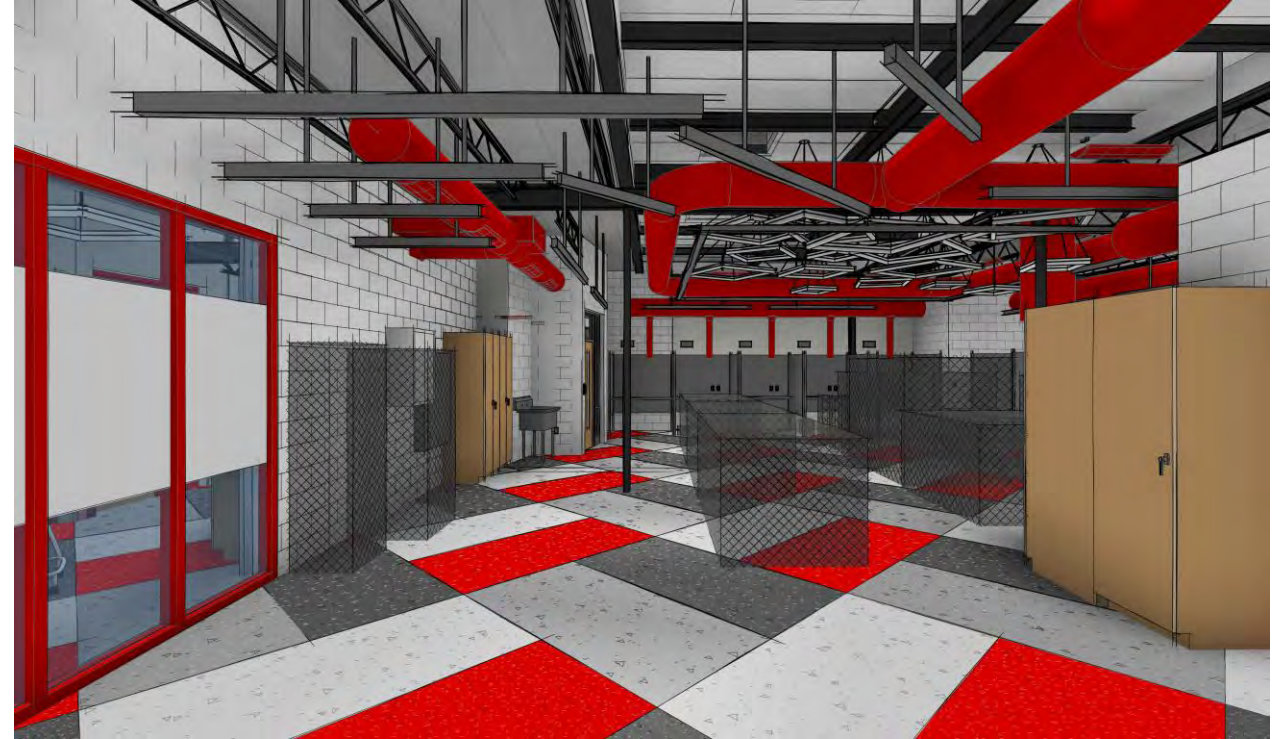
Metal Shop – looking toward the Maker Space & Robotics



Major Scope Items – K-12 Building



Metal Shop – looking toward the entrance wall



Metal Shop – looking toward the welding booths



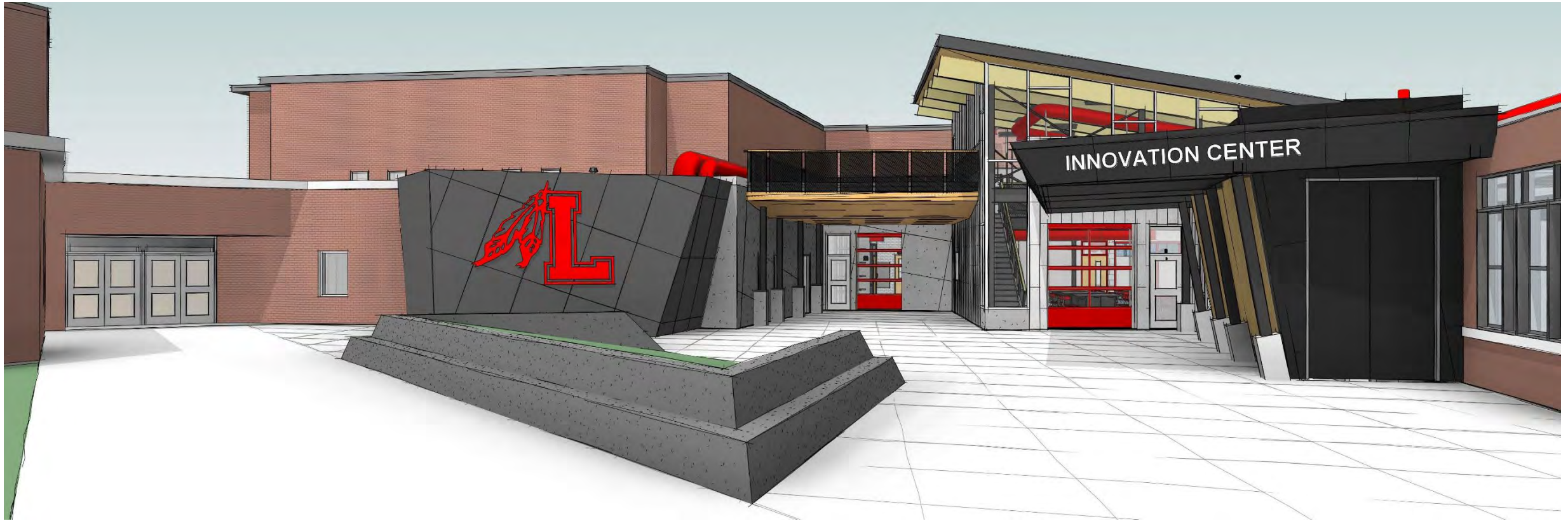
Major Scope Items – K-12 Building



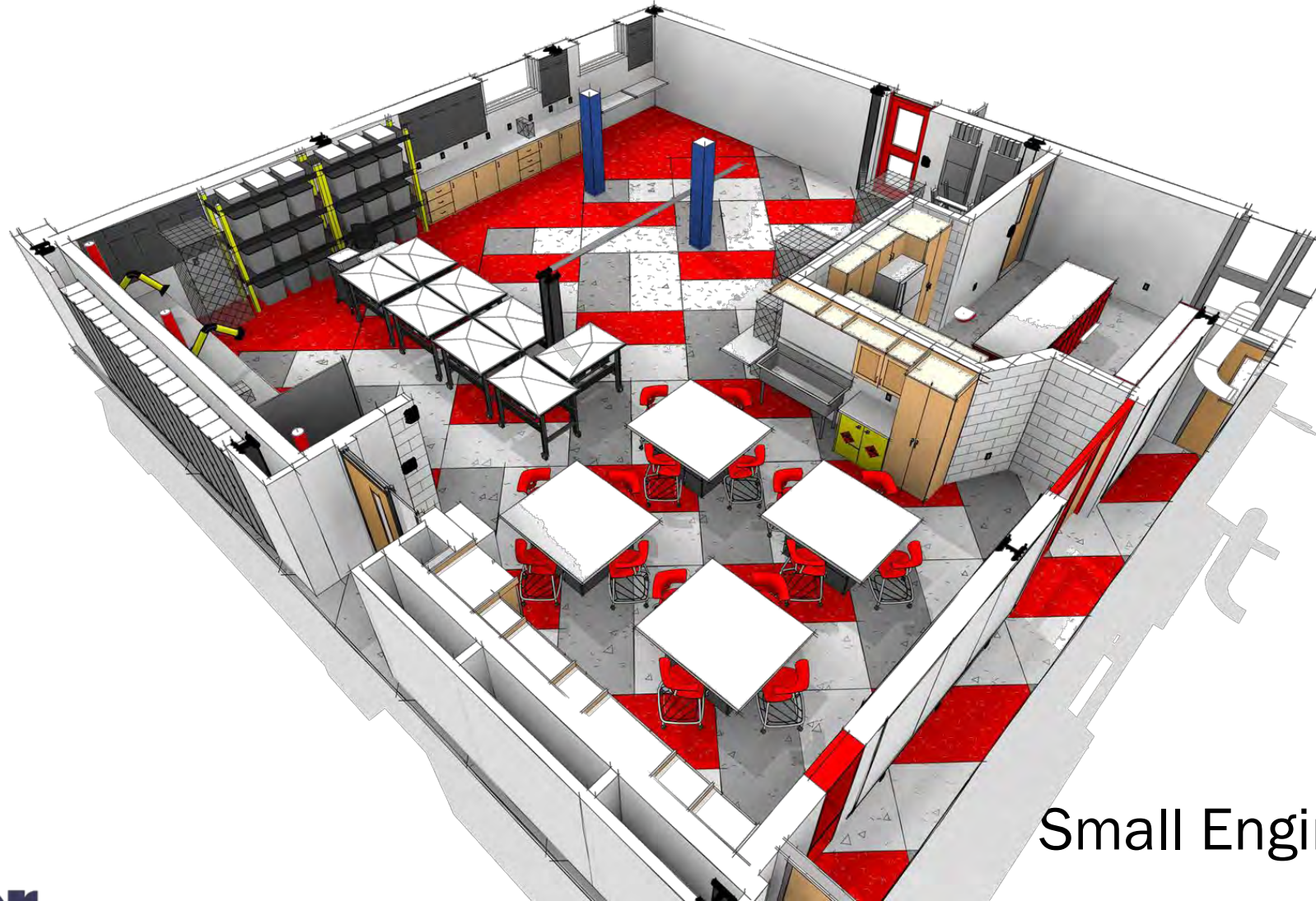
Major Scope Items – K-12 Building



Major Scope Items – K-12 Building



Major Scope Items – K-12 Building



Small Engine



Major Scope Items – K-12 Building



Small Engine – looking toward teaching wall



Small Engine – looking toward workstations



Major Scope Items – K-12 Building



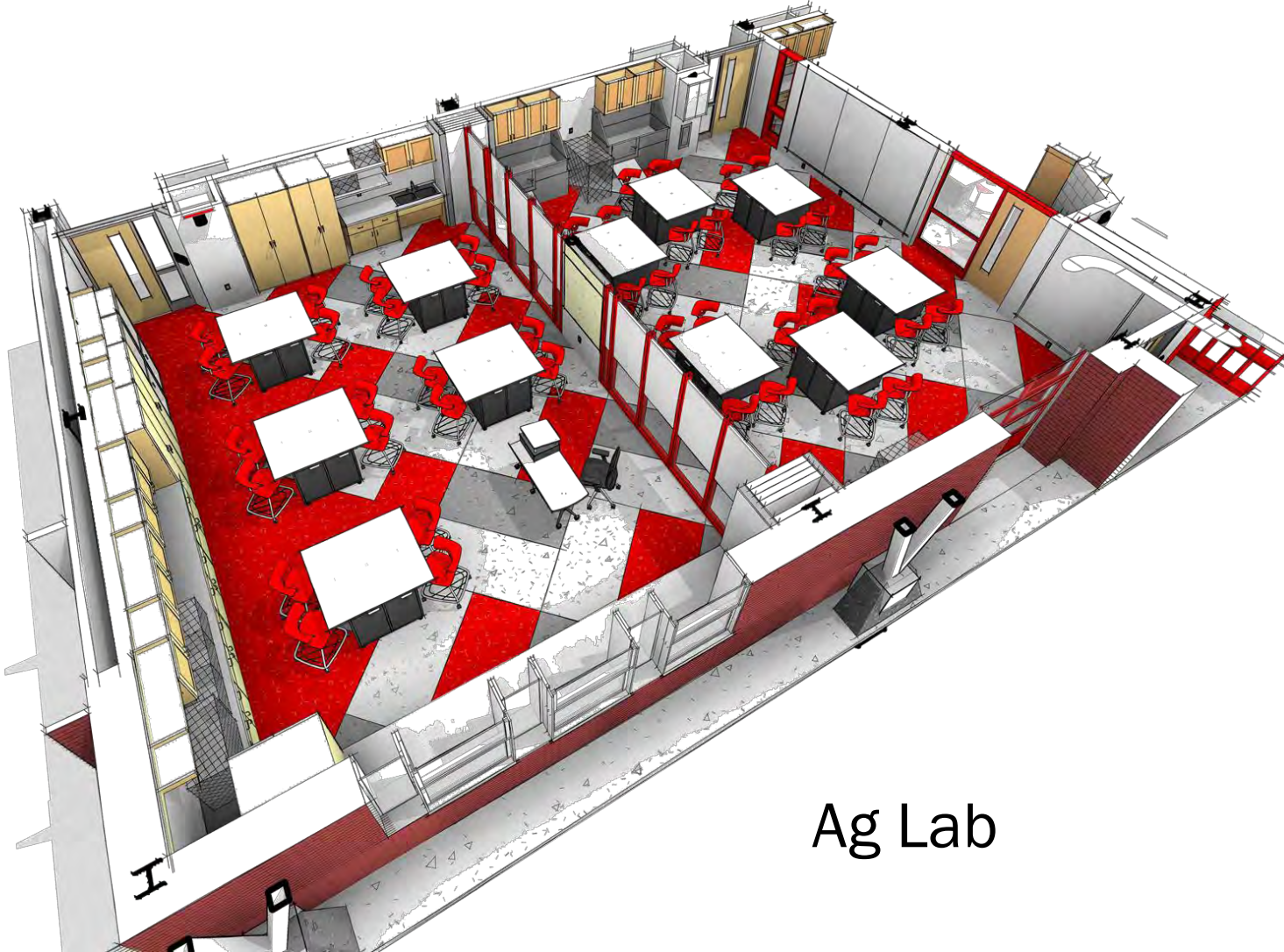
Small Engine – looking toward workstations



Small Engine – looking toward hoist & mezzanine



Major Scope Items – K-12 Building



Ag Lab



Major Scope Items – K-12 Building



Ag Lab – looking toward animal washing stations



Ag Lab – looking toward Prep Room



Major Scope Items – K-12 Building



Ag Classroom – looking toward teaching wall, Ag Lab



Ag Classroom – looking toward storage wall



Major Scope Items – K-12 Building



Ag Canopy



Major Scope Items – K-12 Building



ES STEAM – looking toward corridor wall



ES STEAM – looking toward green screen wall



Major Scope Items – K-12 Building



ES STEAM – looking toward teaching wall, door to exterior



ES STEAM – looking toward corridor wall



Major Scope Items – K-12 Building



Multi-purpose Canopy / ES STEM Outdoor Classroom



Major Scope Items – Site



Fuel Island



Major Scope Items – Site



Turf Field



Miscellaneous Areas of Scope

- Asphalt Replacement
- Fire Alarm Upgrades
- Sidewalk Replacement
- Water Well Upgrades
- Pre-K Playground
- Toilet Room Upgrades
- Casework Replacement
- Chalkboard Replacement
- Theater Rigging Improvements
- Hydronic Pump & Boiler Replacement
- Classroom Ventilation Improvements
- Music Suite Sound Upgrades
- VCT Replacement*
- Athletic Field Scoreboard Replacement*
- MS Gym Backstop Replacement*



Project Budget

	Original	50% DD Estimate
Project Cost (Construction & Incidentals)	\$ 18,561,200	\$ 18,300,845
DASNY Fees	\$ 465,000	\$ 465,000
Capitalized Interest	\$ 1,318,800	\$ 1,318,800
Total Budget	\$ 20,345,000	\$ 20,084,645
Remaining Funds	\$ 746,200	\$ 712,521
Potential Alternates	\$ -	\$ 822,119

*Last estimate June 2021

- Additional funding sources
 - Playground equipment grant
 - Federal stimulus funds
 - Savings from last capital project



Current Market Conditions & Trends

- Project team reaching out to vendors and suppliers regarding material lead times
 - Information is being used to develop project schedule and complete work based on material lead times
- Pricing Trends
 - Estimating team is reaching out to local vendors and specified suppliers to discuss current pricing and trends
- Current indications are that pricing is not declining
 - Escalation and bid day contingency is being held at 5%



Next Steps

September/October Activities

- Turner site walks
- Develop project schedule and logistics
- Constructability review complete by Turner
- HUNT internal QA/QC process
- Turner preparing bid packages
- Turner to prepare updated estimate
- Develop contractor bid list

November Activities

- District page turn of drawings with HUNT
- Review final finish concepts with district for approval
- HUNT & district final pre-bid walkthrough
- Review construction document estimate
- SED Addendum & Approval

December Activities

- Project out to bid

Spring 2022

- Construction Commences



Questions?

