



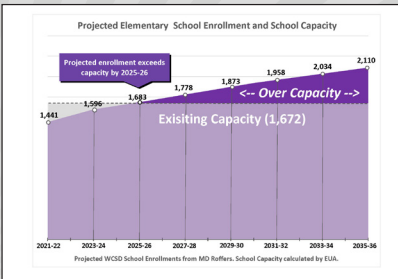
REFERENDUM 2022



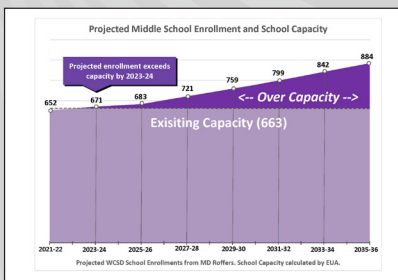
WORKING TOGETHER for a STRONG FUTURE

DID YOU KNOW?

Waunakee Community School District enrollment is projected to increase by 1,380 students by 2035.



The Waunakee Community Middle School is at capacity today. An independent consultant projects 213 more Middle School students by 2035.



THE REFERENDUM QUESTIONS WILL INCLUDE THE FOLLOWING PROJECTS:

Question 1: Invest \$175 million in facilities to

- Construct a new Heritage Elementary School on the Intermediate School site
- Construct a new Middle School at the current Heritage School site
- Complete various district-wide remodeling and maintenance projects

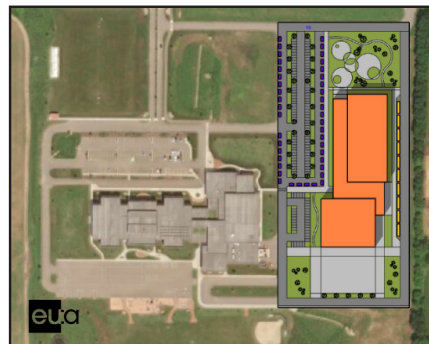
Question 2: Phase in \$6 million of non-recurring operating funds over a three-year period

- Fund recruitment and retention of quality staff
- Operate expanded square footage of facilities
- Maintain existing programs and services when the federal funding expires

PROPOSED SOLUTION

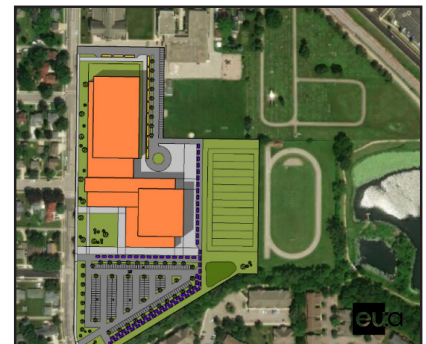
The Waunakee Community School District's Board of Education studied District needs, engaged the community through a survey, and the following referendum plan will be presented on the November 8th ballot.

1. Construct a new Heritage Elementary School on the Intermediate School site
2. Construct a new Middle School at the existing Heritage Elementary site
3. Phase in a 3-year, \$6 million non-recurring operating referendum
 - Attracting and retaining quality staff (Approximately \$4.1 million)
 - Maintaining existing programs as the Federal funding support for COVID-19 is phased out (Approximately \$1.6 million)
 - Costs associated with new construction (Approximately \$0.3 million)



HERITAGE ELEMENTARY SCHOOL

- Conceptual image
- Adjacent to Intermediate School
- 6 sections per grade level
- Student capacity of approximately 700 students
- No immediate change in elementary attendance zones upon completion
- Plan for completion by Fall 2024



WAUNAKEE MIDDLE SCHOOL

- Conceptual image
- To be located on Heritage site
- Student capacity of approximately 900 students
- Future expansion possible to 1,000
- Full football sized field
- Maintains existing 300-meter track
- Plan for completion by Fall 2026

WHY NOW? MODERN LEARNING SPACES

- Heritage Elementary dates back to 1936 and has had 13 additions/remodels.
- Waunakee students learn in portable trailers - 4 temporary classrooms at Waunakee Community Middle School.
- Waunakee is a destination district and modern facilities support our curricular and co-curricular programming.



To learn more about the facilities planning process, please visit the District website.

Waunakee Community School District - Fall 2022 Referendum
wcsd_fall2022referendum@waunakee.k12.wi.us
608.849.2000 - ext.8491

*The Board of Education is required by law to modify the proposed tax levy on October 24, 2022 to reflect the September 2022 student enrollment counts and the October 15th final State equalization aid from the Department of Public Instruction. The tax rate is based on an estimated 5% increase in property values. Increases in property values above 5% may result in a decrease to the tax rate.

TOTAL SCHOOL LEVY	\$38,555,555
TAX RATE	10.89*
DEBT REPAYMENT	\$6,877,451
LEVY & TAX RATE REMAIN THE SAME	10.89

IF BOTH REFERENDUM QUESTIONS ARE NOT APPROVED

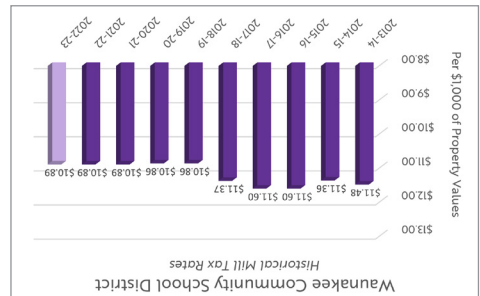
TOTAL SCHOOL LEVY	\$38,555,555
TAX RATE	10.89*
DEBT REPAYMENT	\$0

IF BOTH REFERENDUM QUESTIONS ARE APPROVED

- The School Board is able to utilize a combination of financial strategies to accomplish a consistent tax rate. Examples include:
 - Paying down existing tax debt early, which results in interest cost savings for taxpayers.
 - Taking advantage of low interest rates when issuing new debt.
 - Issuing new debt across multiple fiscal years which spreads out the cost over a longer period of time.
- A consistent tax rate may still result in school property tax levy changes over time because of property tax shifts between municipalities, within municipalities, property value changes, and school levy credit changes.

HOW IS A CONSISTENT TAX RATE ACCOMPLISHED?

The School Board will approve the 2022-2023 property tax levy at a Special School Board meeting on Monday, October 24, 2022.



THE SCHOOL BOARD HAS A GOAL FOR A CONSISTENT PROPERTY TAX RATE ACROSS SCHOOL YEARS.