

School District of Pontiac
Office of Special Services
and Student Equity

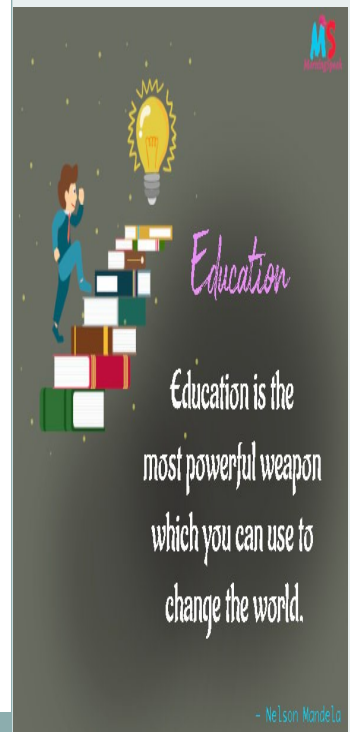
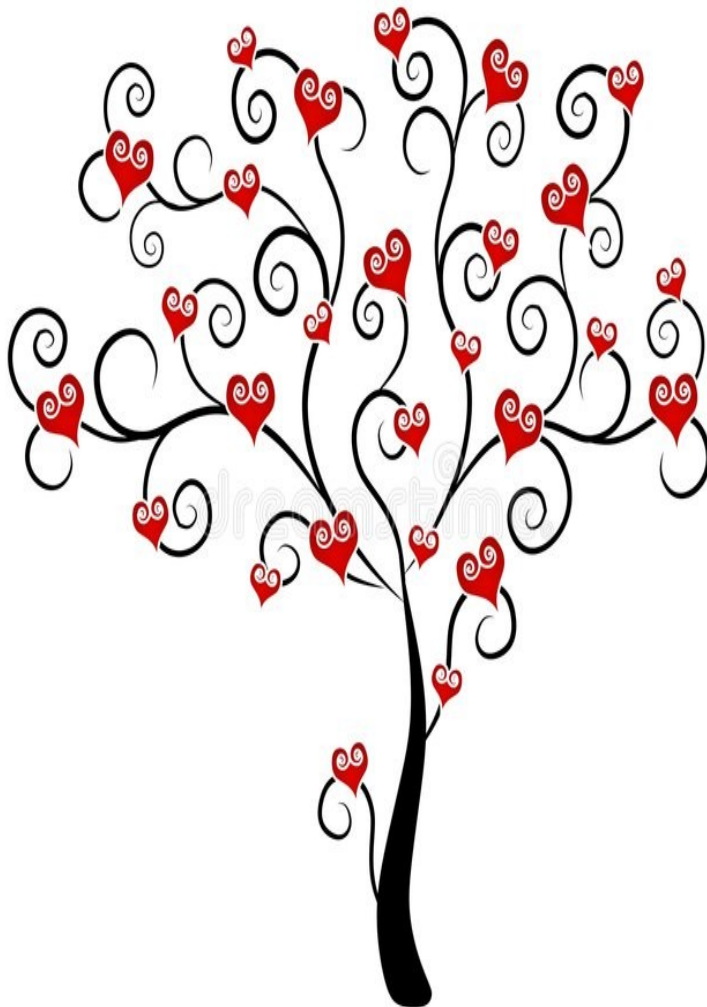
February 2023
Volume 2, Issue 3

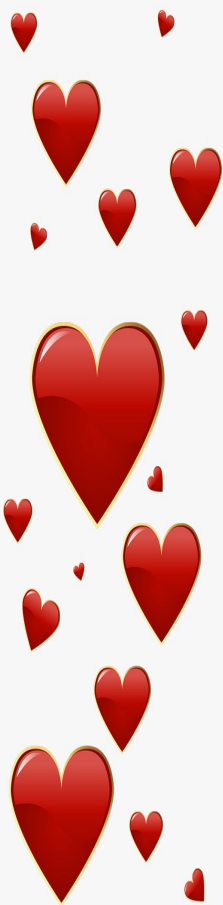
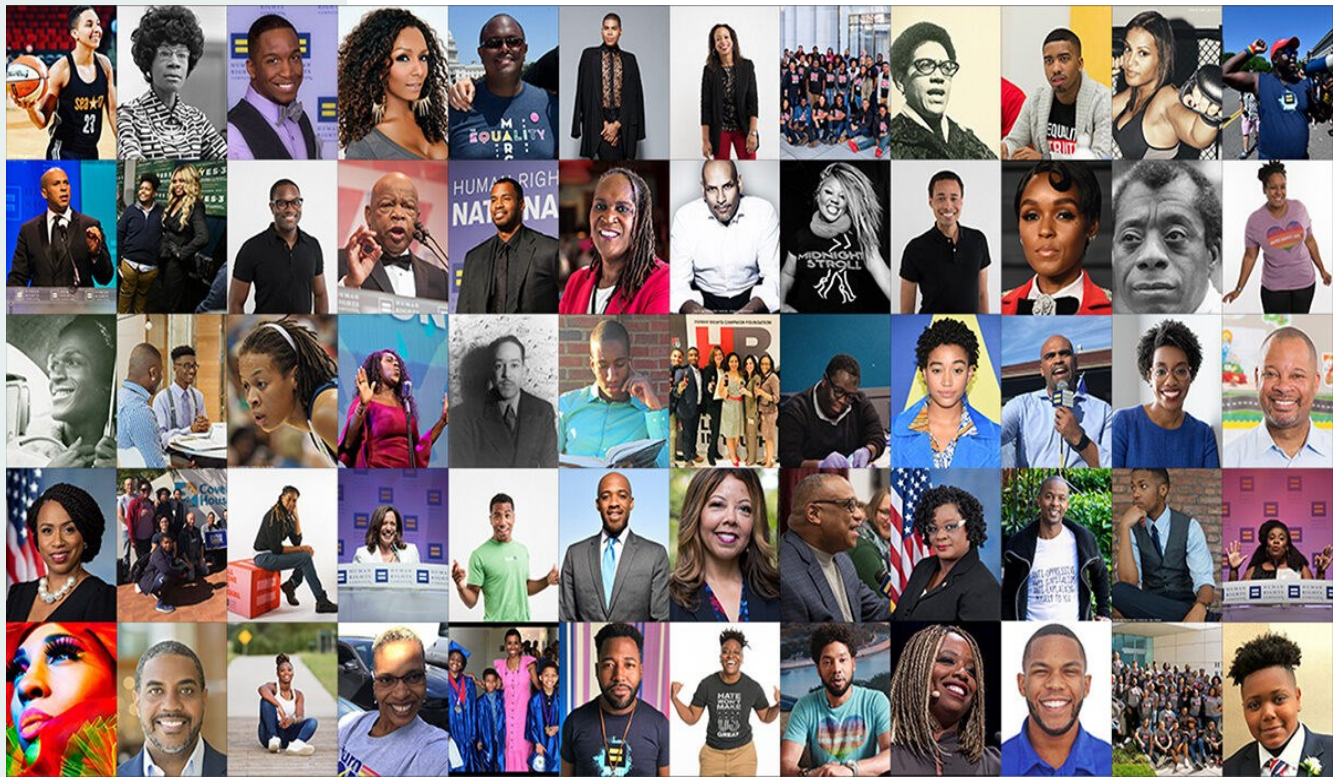
SPEDITION NEWSLETTER

Arnella Jamison, Ph.D., Director
Jennifer Parker, Supervisor

Kelley Williams, Superintendent
Dr. Desheil Echols, Assistant Superintendent

Happy Valentine's Day

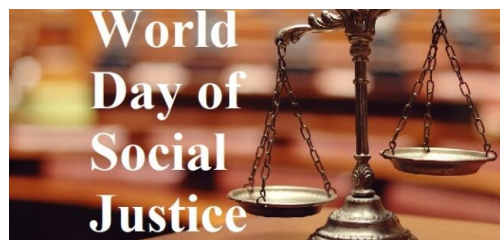




February

- ⇒ Review IEP's of ALL Special Ed Students on your caseload.
- ⇒ Case managers should complete IEP at a glance for regular education teachers. Or use the Report to Classroom Teachers available in SEEFS.
- ⇒ Review caseload / identify students / make corrections on Student Transfer Form.
- ⇒ ALL Emotionally Impaired (EI) students MUST have a current BIP.
- ⇒ Establish new discipline binders for each student.
- ⇒ First month of school, all students must be tested using the Brigance Test.
- ⇒ Review 3 year IEP Dates / Annual IEP Dates.
- ⇒ Schedule 3 year re-evaluations with the school psychologist.

WORLD DAY OF SOCIAL JUSTICE – FEBRUARY 20, 2023



HISTORY OF WORLD DAY OF SOCIAL JUSTICE

The world is facing significant issues including serious financial crises, high unemployment rates, poverty, exclusion among societies, discrimination, and lack of access to facilities that prohibit full participation in the global economy for developing countries. Back in 1995, Copenhagen, Denmark, hosted the World Summit for Social Development. This resulted in the Copenhagen Declaration and Programme of Action. Over 100 political leaders took a pledge to alleviate poverty, work towards full employment and create stable, safe, and just societies. They also decided that they needed to put people at the center of the development plans.

In 2005 in New York, the U.N.'s member states reviewed the Copenhagen Declaration and Programme of Action at a session of the Commission for Social Development. They agreed to commit to advancing social development. Two years later on November 26, 2007, the United Nations General Assembly declared that starting from the sixty-third session of the General Assembly, February 20 will be celebrated annually as the World Day of Social Justice. On June 10, 2008, The International Labour Organization adopted the I.L.O. Declaration on Social Justice for a Fair Globalization.

Organizations across the world including the United Nations and the International Labour Office, make statements on the importance of social justice for people. Organizations also prepare and present plans for tackling issues and promoting social justice. Trade unions also participate and do their bit in marking this day. The Russian General Confederation of Trade Unions has in fact declared the common slogan as 'Social Justice and Decent Life for All!'

<https://nationaltoday.com/world-day-of-social-justice/#:~:text=Gender%20discrimination%20in%20the%20world>

WHAT ARE THE FOUR PRINCIPLES OF SOCIAL JUSTICE?

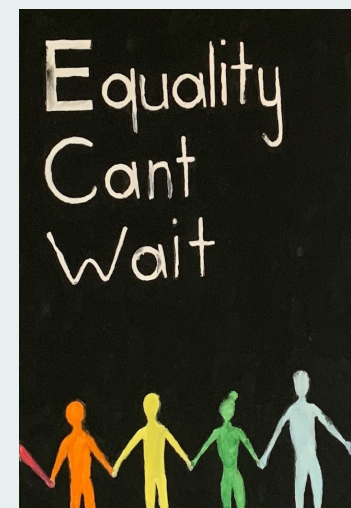
The four interrelated principles of social justice are equity, access, participation, and rights. These are important to create a socially sound world for every individual.

WHAT IS AN EXAMPLE OF SOCIAL JUSTICE?

Social justice essentially means fairness in society which includes healthcare, employment, housing, and more. Over the years, it has started applying to all aspects of society, including race and gender.

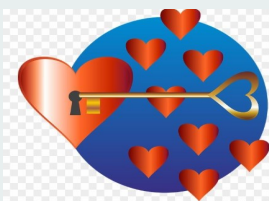
WHAT ARE SOME SOCIAL ISSUES?

Some of the most pressing social issues are poverty, homelessness, climate change, gender inequality, and access to healthcare, e.t.c.



Medicaid Billing

- * As a Para, did you move to another classroom? Did you inform the Sped office? (7523)
- * As a Para, did you move to another building? Did you inform the Sped office? (7523)
- * Did you check the student's eligibility?
- * Do you have a current Personal Care Form?
- * Did you mark your billing "Read To Bill"?
- * Did you make corrections from the previous month, if any, and mark them "Ready to Bill"?
- * Did you forget your password? Call the help desk at 248.209.2060.
- * If a student was absent for the day or a part of the day, you may notice a red notebook next to the date of service. This is a filter to make sure you are not billing for a student in error.
- * Need help, click the link
- * [Personal Care](#)
- * [Direct Service](#)



IEP CHECK LIST

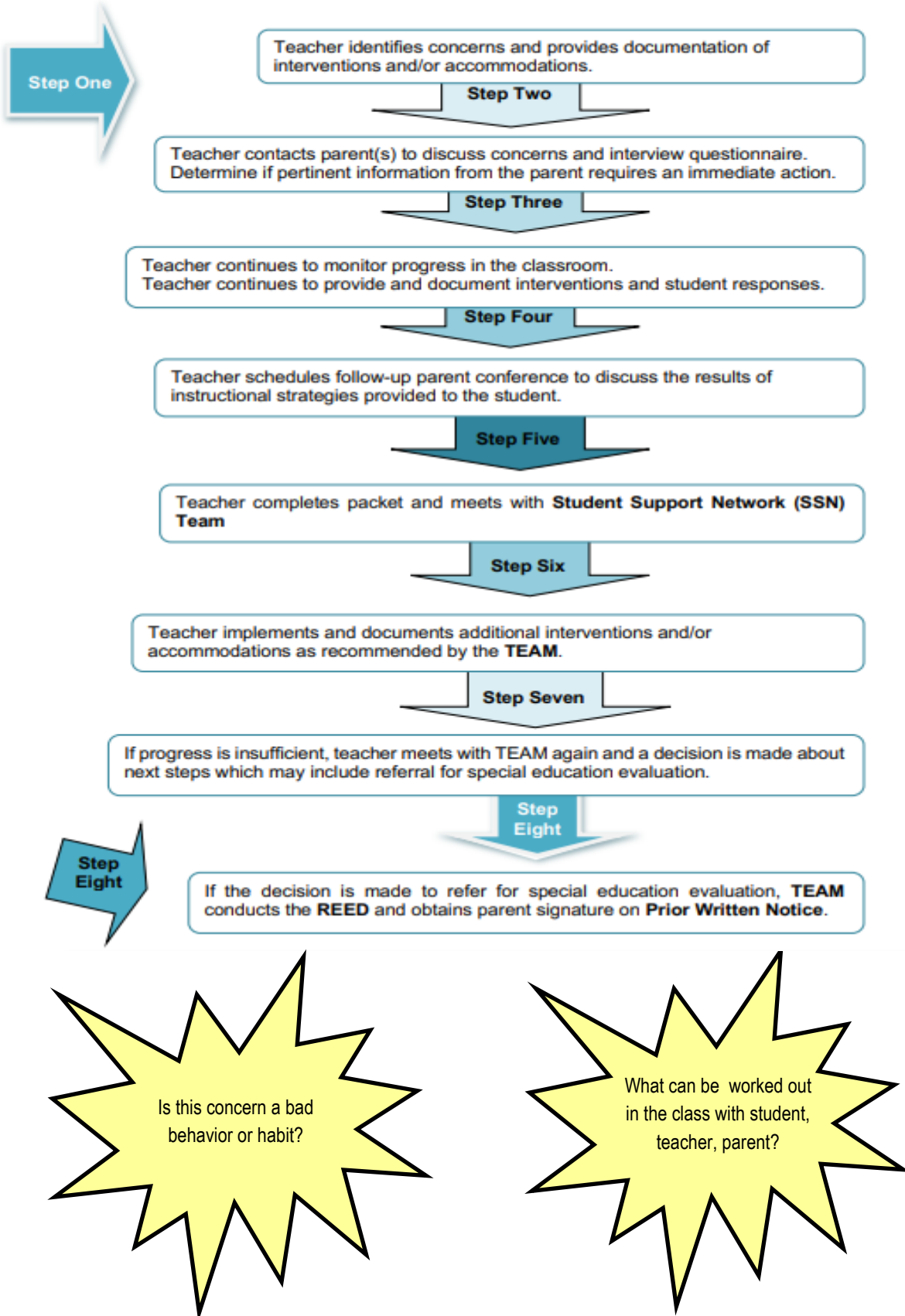


- ⇒ At least two parent contacts are documented. Note if the parent did not attend / did not respond IEP.
- ⇒ MET and REED information and dates are indicated on the green jacket for reevaluations.
- ⇒ All dates and student identification are completed accurately.
- ⇒ All participant signatures are completed on all necessary forms.
- ⇒ All reports are attached to MET report.
- ⇒ Eligibility is the primary disability.
- ⇒ Include the invitation for the REED and the separate invitation for the IEP meeting.
- ⇒ Appropriate programs and services are identified. Specific time and frequency of services are indicated.
- ⇒ Appropriated support/related services are indicated.
- ⇒ Least Restrictive Environment (LRE) considerations are addressed.
- ⇒ Quarterly progress reports are completed in conjunction with report cards. A copy of most recent progress report should accompany the IEP to the office.
- ⇒ Transportation concerns have been addressed.

TO PROPERLY USE THE VALIDATE BUTTON

- ◇ From the IEP Menu, click on the triangle next to IEP Demographics.
- ◇ Next click on the tab that says "Perform Operation requiring Entire Form Access".
- ◇ Then click on the "Validate Form" button.
- ◇ Now click on each area in red that pops up on the right side of the screen, make the necessary corrections.
- ◇ Continue to go back to the "Perform Operations Requiring Entire Form Access" page until you can see the "Mark IEP Complete" turn black.
- ◇ Click on the "Mark IEP Complete" a warning will pop up twice, say "OK" both times.

STEPS IN THE STUDENT SUPPORT NETWORK (SSN)



**OFFICE OF SPECIAL SERVICES AND
STUDENT EQUITY**

Dr. Arnella Jamison
Special Education Director
Arnella.jamison@pontiacschools.org

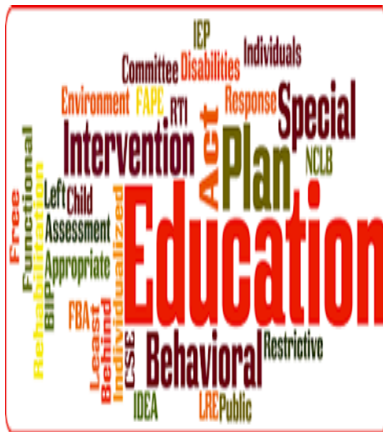
Mrs. Jennifer Parker
Special Education Supervisor
Jennifer.parker@pontiacschools.org

Ms. Lynn Williams
Administrative Assistant
Business Services
Harriett.williams@pontiacschools.org

Ms. Latarsha Fields
Administrative Assistant
Intake Verification Specialist
Latarsha.fields@pontiacschools.org

Mrs. Aileen Adragna
Administrative Assistant
IEP Data Collection and Dissemination
Specialist
Aileen.adragna@pontiacschools.org

**Medicaid billing
is due on/before
the fifth business
day of the month
for students be-
tween the ages of
3 to 21.**



Ambulation/Mobility

Assistance with Self

Administered Meds

Bathing

Dressing

Eating/Feeding

Grooming

Health Related Functions through
hands-on assistance, cueing and
monitoring

Maintaining Continence

Meal Preparation

Mobility /Positioning

Personal Hygiene

Redirection/Intervention

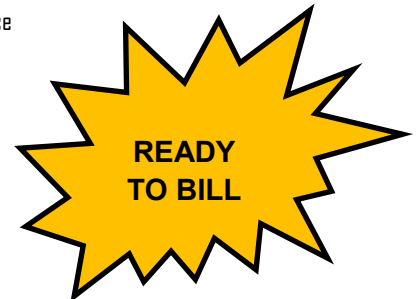
for Behavior

Respiratory Assistance

Skin Care

Toileting

Transferring



School District of Pontiac
Office of Special Services and
Student Equity

47200 Woodward Ave
Pontiac MI 48342

Phone: 248-451-7523
Fax: 248-451-7542



**Personal Care
Forms must be**

