

# Human Services Career Cluster

The Human Services Career Cluster focuses on preparing individuals for employment in career pathways that relate to families and human needs such as counseling and mental health services, family and community services, personal care services, and consumer services.

## Cosmetology and Personal Care Services Regional Program of Study



The Cosmetology and Personal Care Services regional program of study introduces CTE learners to knowledge and skills related to providing beauty and personal care services. CTE concentrators may learn about or practice managing personal care facilities and coordinating or supervising personal service workers.

### Secondary Courses for High School Credit

#### Level 1

- Complete HS Graduation Requirements

#### Level 2

- Principles of Cosmetology Design and Color Theory *and*
- Introduction to Cosmetology

#### Level 3

- Cosmetology I

#### Level 4

- Cosmetology II

### Postsecondary Opportunities

#### Certificate/License

- Certified Aesthetic Laser Operator
- Cosmetologist
- Certified Spa Supervisor
- Nail Technician/Specialist and Manicurist

#### Associates Degrees

- Cosmetology/Cosmetologist, General
- Aesthetician/Esthetician and Skin Care Specialist
- Salon/Beauty Salon Management/Manager
- Cosmetology, Barber/Styling, and Nail Instructor

### Work-Based Learning and Expanded Learning Opportunities

#### Exploration Activities

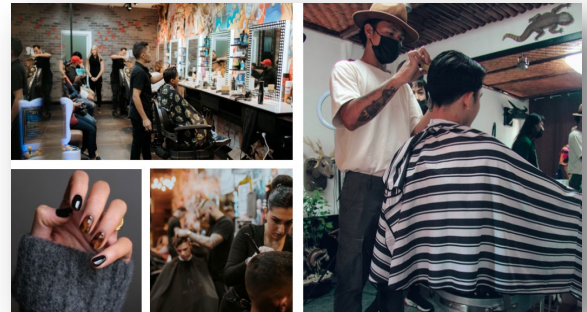
- Participate in TIVA or SkillsUSA

#### Work-Based Learning Activities

- Job shadow a cosmetologist
- Work part-time at a salon, spa, or barbershop

### Industry-Based Certifications

- Cosmetology Operator License
- Cosmetology Esthetician Specialty License
- Cosmetology Manicurist Specialty License
- Barber Operating License



### Aligned Occupations

Occupations	Median Wage	Annual Openings	% Growth
First-Line Supervisors of Personal Service Workers	\$36,941	1,634	24%
Barbers	\$28,267	348	14%
Hairdressers, Hairstylists, and Cosmetologists	\$21,507	3,489	22%
Manicurists and Pedicurists	\$21,715	418	45%
Shampooers	\$18,720	139	24%
Skincare Specialists	\$26,437	637	22%

Successful completion of the Cosmetology and Personal Care Services regional program of study will fulfill requirements of the Public Service endorsement. Revised – August 2022

# Cosmetology and Personal Care Services

## Course Information

### Level 1

COURSE NAME	LOCAL ID SERVICE ID	PREREQUISITES	COREQUISITES
Principles of Cosmetology Design and Color Theory	CTHU20 13025050 (1 credit)	None	None

### Level 2

COURSE NAME	LOCAL ID SERVICE ID	PREREQUISITES	COREQUISITES
Introduction to Cosmetology	CTHU21 13025100 (1 credit)	None	None

### Level 3

COURSE NAME	LOCAL ID SERVICE ID	PREREQUISITES	COREQUISITES
Cosmetology I	CHU19A/B 13025210 (3 credits)	None	None

### Level 4

COURSE NAME	LOCAL ID SERVICE ID	PREREQUISITES	COREQUISITES
Cosmetology II	CHU29A/B 13025310 (3 credits)	Cosmetology I	None

FOR ADDITIONAL INFORMATION ON THE HUMAN SERVICES CAREER CLUSTER,  
PLEASE CONTACT: [CTE@tea.texas.gov](mailto:CTE@tea.texas.gov)  
<https://tea.texas.gov/cte>

Spring Branch Independent School District does not discriminate on the basis of race, color, national origin, sex, disability or age in its programs or activities and provides equal access to the Boy Scouts and other designated youth groups. The following person has been designated to handle inquiries regarding the nondiscrimination policies: [Karen Heeth, Associate Superintendent for Talent/Administration, Wayne F. Schaper, Sr. Leadership Center, 955 Campbell Road, Houston, Texas 77024, 713-251-2346, Karen.Heeth@springbranchisd.com.]

Further nondiscrimination information can be found at [Notification of Nondiscrimination in Career and Technical Education Programs](#).