

# WMS Paw Print

## 2023.04.27

Bringing you the middle school scoop...

### Principal's Message

April 27, 2023

Dear Westlake Middle School Families,

Our 2nd Annual Parent University for 7th and 8th Grade Parents was held this week and it was great. For the past two years, the evening has resulted in very productive conversation, thought, and feedback for the school to focus on continuous improvement for transitioning from 5th through 9th Grade.

This year we had about 75 parents, students, and teachers. Thank you to our PTA, BLT, and PLG parents and students who facilitated the discussions.

Here are some highlights.

- High **achievement** is and should be our focus. With purposeful supports, we are feeling confident as a school community that we can get every student to the next level. The collective understanding of the nature of adolescent growth and change informs the transition.
- **Growth** is very important as well. Middle School is the best place for learning from mistakes and recognizing when change and growth have occurred. Learning from mistakes is not easy, but very worthwhile. Seeing this through the lens of challenges, instead of mistakes and failure is a more productive perspective.
- An indication of success in middle school is when students recognize what they do well, how they do it well, what their challenges are, and how they are going to tackle them. This metacognition, or thinking about thinking, is an important focus as well. A direct connection between this and **self-advocacy** was made. Asking for help means you know when you need help.

Thank you to all who participated.

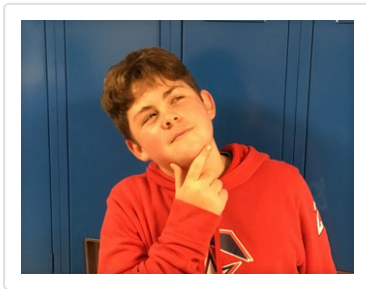
**KEEP THE PAW PRINT BOOKMARKED!**

**Once you have access to the document it will update automatically.**

Older information will be archived on our <https://wms.mtplcsd.org/>

Enjoy the *stuff* below!

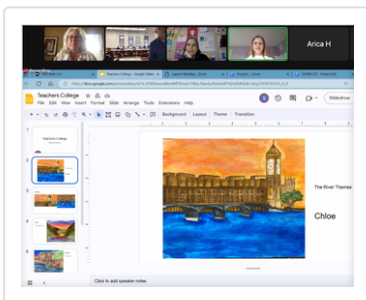
## New and Important Information



### 8th Grade Celebration of Achievement, Growth, and Learning

There is so much more learning to come in May and June, but it's hard to believe that the end of the year is coming in just two months. We've watched our 8th Graders achieve at high levels. We have watched them grow as learners. We've watched them become empathetic, open-minded, critical-thinking, problem-solvers. So, as we approach the end of the year, our 8th Grades deserve a bit of celebration. Keep an eye out for a special newsletter just for our 8th Graders.

**Hmmm! I wonder what it will be?**



### Teachers College, Columbia University Showcases Student Artworks

Four outstanding art students from Westlake and two amazing students from a school in the Bronx, NY participated in an online class with graduate art education majors at Teachers College, Columbia University on April 24, 2023. The purpose was for art education majors to view student artwork and for students to share their ideas. They answered questions about what makes a good art teacher.

Talk about **College and Career Ready**...WOW!

Thank you Dr. Cowles and Ms. Bernardone.



## 8th Grade Social Studies and ELA Experience

During the ELA double periods on May 4th and 5th, 8th-grade students will have the opportunity to learn about Eva Schloss, a Holocaust survivor. This experience will be hosted by the National World War II Museum via a virtual experience. This opportunity aligns with both Social Studies and English and will foster a deeper understanding of this important time period.

**We look forward to an impactful and enlightening experience. Thank you to The Social Studies and ELA Teachers for planning this.**

As we head toward Memorial Day, remember that we should be grateful every day for those that sacrificed for our rights and freedoms.

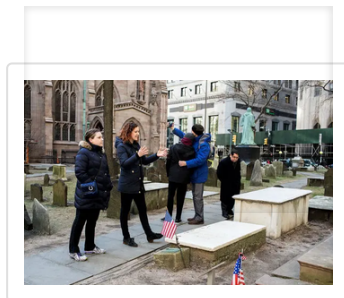


## May 1st - PREPARING for The 6th Grade Art Trip to Manhattan

With the possibility of rain, students should dress in layers. Students should bring a brown bag lunch. One can be provided by the cafeteria if it is needed or preferred. We will be walking so wear comfortable shoes. Students can bring snacks for the bus ride home. We will return to school before dismissal.

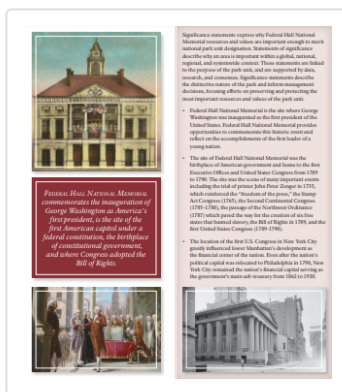
After the art exhibit, we will take a walking tour of some local historical sites. A description of the sites will be sent separately to 6th Grade Students and Families.

<https://www.halldeslumieres.com/>



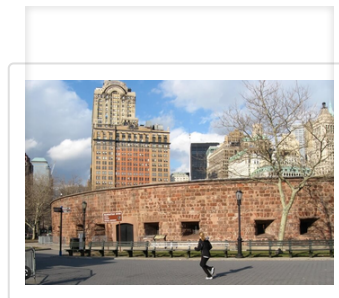
# Trinity Church

We hope to see this famous church where George Washington attended and Alexander Hamilton is buried.



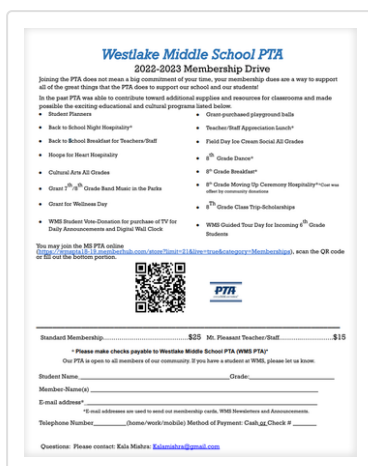
## Federal Hall

Federal Hall is on the way and is the first home of our federal executive branch, and the site of George Washington's Inauguration.



## Battery Park

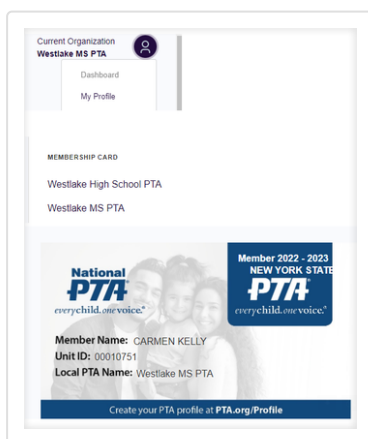
We'll end at Battery Park to view Ellis Island and The Statue of Liberty. It's also the location of a great scene from a cartoon penguin movie. Hope the weather holds out!



# PTA Membership Drive

**Our PTA has done many amazing things this year. Their success cannot happen without your support.** They are almost at their goal for membership for the year. Please sign up if you haven't.

Get involved.



## PTA Membership Check

If you are not sure if you have already signed up, all you have to do is log into Memberhub, and under "My Profile" > Membership card > Westlake MS PTA, you can see if the card is active for this school year.



## May 31st - National Junior Honor Society Ceremony

Our NJHS Committee will be reviewing applications and notifying families in early May if their child will be inducted into the NJHS for the 2022 - 2023 School Year. Save the date for the ceremony. As a reminder, this is a merit-based organization with rigorous challenging criteria. We emphasize that the process is as important as recognition. Although not all students who apply will meet the criteria, it is an important first experience in meeting high expectations and long-term deadlines for the first time in a student's career. Our BLT has worked to diversify the ways in which we recognize growth and achievement. Students who do not meet the criteria are still eligible for the Principal's List, Honor Roll, and "On-A-Roll."

## Upcoming Dates

### April and May - New York State Assessments

Click on the chart for a full set of dates.

NYS Assessments: Westlake Middle School

EXAM	GRADE	DATES
ELA*	7 & 8	Wed, April 19 Thurs, April 20
	6	Tues, April 25 Wed, April 26
MATHEMATICS*	7 & 8*	Tues, May 2 Wed, May 3
	6	Mon, May 8 Tues, May 9
SCIENCE (Performance)	8*	Tues, May 23
SCIENCE (Written)	8*	Mon, June 5
NYSESLAT (SPEAKING)†	6 - 8	April 17 - May 26
NYSESLAT (LISTENING, READING, WRITING)†	6 - 8	May 15 - May 26

\* The NYS ELA/Mathematics Assessments will be administered as Computer Based Tests (CBTs).  
† The NYSESLAT Exams are only for those students who are designated as ELL students.  
\* The Math 8 and Science 8 Exams are only for those students currently enrolled in those courses.

**ALLERGIES**

	Gluten	Eggs	Dairy	Soy	Nuts	Fish
Hamburgers	✓	✓	✓	✓	✓	✓
Chicken Nuggets	✓	✓	✓	✓	✓	✓
Grilled Chicken	✓	✓	✓	✓	✓	✓
Pizza	✓	✓	✓	✓	✓	✓
Meatballs	✓	✓	✓	✓	✓	✓
Pasta	✓	✓	✓	✓	✓	✓
Rice	✓	✓	✓	✓	✓	✓
Mac & Cheese	✓	✓	✓	✓	✓	✓
Vegetable Chilli	✓	✓	✓	✓	✓	✓
Cookies and Brownies	✓	✓	✓	✓	✓	✓

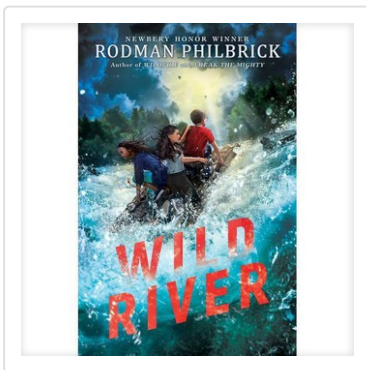
## May 8th and 9th - 8th Grade Trip to Club Getaway

We've added a sample menu with allergy information for your reference. Reach out to us ASAP if you have any medical or health needs.



## May 13th - Music In The Parks Trip

# Principals' Leadership Group - Snapshots of What's Happening at WMS



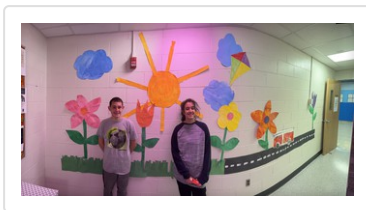
## The Importance of Reading - First Chapter Fridays

Can you guess who our reader was this week?

Here are the clues. The reader . . .

- visits classrooms
- gives out t-shirts
- wears a number 22 on their shirt

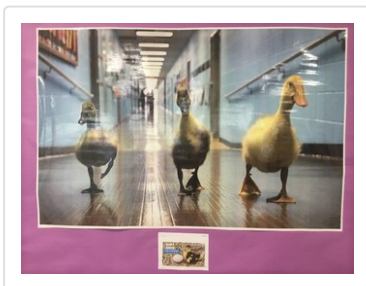
Click the book to hear the reading.



## Former Stars Brightening The Middle School

Two of the bright shining lights who moved from WMS to WHS returned to spread their artistic positivity in the Nurse's Office. Thank you to them and the WHS faculty and staff.

## Looking Ahead - Save The Dates



## Coming soon...

Be on the look out for the hatch date of our feathery friends.



## Middle School Magnificence - Celebrating the people who make Westlake Middle School great

KEEP ADDING TO OUR LIST!

YOUR MESSAGES WILL BE DELIVERED TO TEACHER  
MAILBOXES DURING TEACHER APPRECIATION WEEK  
MAY 8TH

From time to time, we think it is important to highlight the people out front and behind the scenes who do a tremendous job building our school culture and community. Who do you think should be recognized? Fill out the form below.

GOOGLE FORM:

[https://docs.google.com/forms/d/e/1FAIpQLSfGk4dh3-c5xhH5eCal02DftljKdEMpsUhAmWt5YVNFjs2pag/viewform?usp=sf\\_link](https://docs.google.com/forms/d/e/1FAIpQLSfGk4dh3-c5xhH5eCal02DftljKdEMpsUhAmWt5YVNFjs2pag/viewform?usp=sf_link)



## May 15th - Incoming 6th Grade Parent Orientation



## May 18th - 6th Grade Trip to The Bronx Zoo



## May 23rd from 7:00 to 9:00 p.m. - 7th and 8th Grade Spring Concert





May 24th from 10:00 to 1:00 p.m. -  
6th Grade Steam Symposium



May 26th through May 29th -  
Memorial Day Weekend



May 30th - Spring NWEA MAP  
Reading Assessments for Grades 6 - 8



May 31st at 7:00 p.m. - National  
Junior Honor Society Induction  
Ceremony



June 1st from 7:00 to 9:00 p.m. - 6th  
Grade Spring Concert



