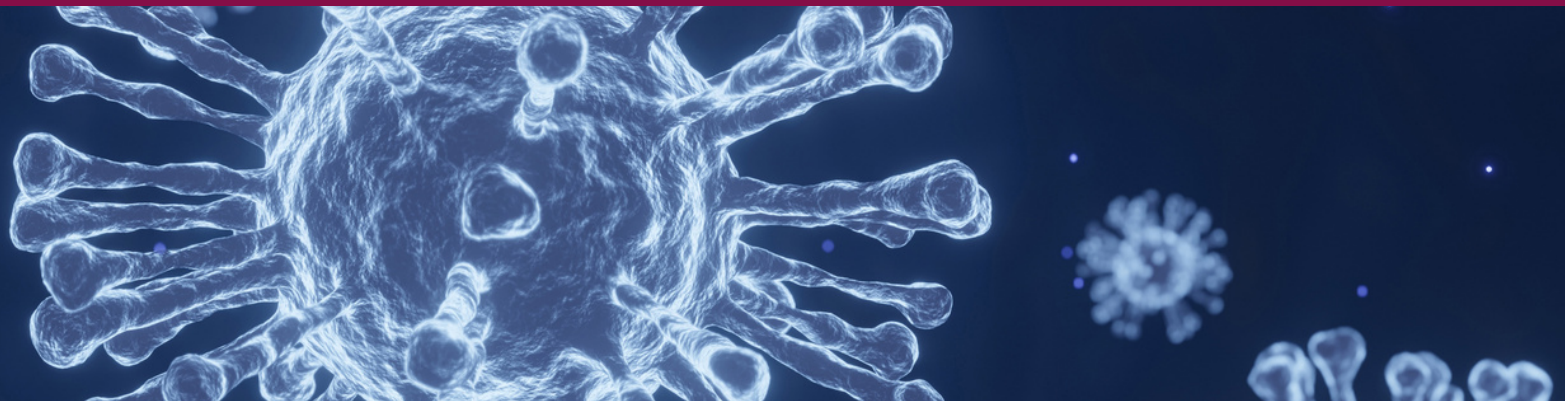


# Lehigh Area School District

## Learning Model Update



We would like to issue a correspondence to staff and families regarding the current Covid-19 case numbers in the area. At the time of this update Carbon County is currently at the “Moderate Level” with respect to the county levels of transmission of COVID-19. The instructional model for the Lehigh Area School District will continue with the current delivery model; however, we need to keep in mind that the counties around us are currently at the “substantial level.”

The District will continue to work with the PA Department of Health and monitor the current rate of transmission throughout the County on a weekly basis. We want to make the educational community aware that we are continuing to offer our current educational delivery models to our students and we are not planning to change the instructional model at this time.

We will continue to monitor all information and data related to the COVID-19 pandemic and will keep everyone updated with any changes or additional information.