

January 23, 2019



Mr. Terry Zerwas
St. Michael-Albertville ISD #885
11343 50th Street NE
Albertville, MN 55301

**RE: St. Michael-Albertville ISD #885
Short-Term Radon Testing Results
IEA Project #201811184**

Dear Mr. Zerwas:

As requested by St. Michael-Albertville ISD #885, IEA placed 408 Air Chek Pro Chek short-term radon test kits in the following buildings for the purpose of evaluating radon levels:

- Middle School West 136 samples
- Middle School East 113 samples
- Big Woods Elementary 86 samples
- Albertville Primary 73 samples

The radon samples were placed by certified radon measurement professionals, Ian Dickhausen RMEA-00044 and Chad Whaylen RMEA-00043.

INTRODUCTION

Radon is a colorless, odorless, tasteless, radioactive gas that occurs naturally in soil, rocks, and underground water supplies and in the ambient air. According to the U.S. Environmental Protection Agency (EPA) and other scientific organizations, naturally occurring radon gas has been associated with an increased risk of developing lung cancer. The chances of developing lung cancer from radon exposure are dependent on several factors including individual susceptibility and, perhaps more importantly, the dose and duration of exposure. Radon testing in schools is highly recommended by the Minnesota Department of Health (MDH) and EPA.

IEA placed 408 Air Chek Pro Chek short-term radon test kits in frequently occupied areas in the buildings listed above at St. Michael-Albertville ISD #885 for the purpose of sampling for radon in accordance with the MDH's *Guidance for Radon Testing in Minnesota Schools* (2018) and ANSI/AARST 'Protocol for Conducting Measurements of Radon and Radon Decay Products in Schools and Large Buildings' (ANSI/AARST MALB 2014). A total of 408 radon test kits were placed from December 10, 2018 to December 13, 2018 for a total short-term sampling period of 4 days. The test kits were analyzed by Air Chek, Inc. 1936 Butler Bridge Road, Mills River, NC 28759. The sampling and analysis methodologies are provided in Appendix A. IEA followed ANSI/AARST MALB 2014 for quality assurance measurements by including duplicate kits, control kits (blanks), and spiked kits. The radon test kits were analyzed by AirChek, Inc.

INSTITUTE FOR ENVIRONMENTAL ASSESSMENT, INC.
www.ieasafety.com

BROOKLYN PARK
9201 West Broadway, #600
Brooklyn Park, MN 55445
763-315-7900 / FAX 763-315-7920
800-233-9513

MANKATO
610 North Riverfront Drive
Mankato, MN 56001
507-345-8818 / FAX 507-345-5301
800-233-9513

ROCHESTER
210 Woodlake Drive SE
Rochester, MN 55904
507-281-6664 / FAX 507-281-6695
800-233-9513

BRAINERD
601 NW 5th Street, Ste. #4
Brainerd, MN 56401
218-454-0703 / FAX 218-454-0703
800-233-9513

MARSHALL
1420 East College Drive
Marshall, MN 56258
507-476-3599 / FAX 507-537-6985
800-233-9513

VIRGINIA
5525 Emerald Avenue
Mountain Iron, MN 55768
218-410-9521
800-233-9513

EVALUATION CRITERIA

The MDH and the EPA have established a recommended action level in frequently occupied areas of 4.0 pCi/L for an annual average. Testing was conducted during the winter, as recommended by the MDH, when the ventilation system was operating normally, and windows and doors were closed. Consequently, sampling under these “closed” conditions should be considered “worst case.” The MDH recommends follow-up testing for sampling results that are above the action level. Please refer to the following table for MDH guidelines:

RESULTS (pCi/L)	RECOMMENDED ACTION
LESS THAN 4	Consider re-testing after changes to foundation or HVAC and every 5 years
GREATER THAN 4	Conduct CRM short-term testing during winter months
LESS THAN 4 (<u>DURING OCCUPANCY</u>) AFTER CRM TESTING	Repeat CRM testing if not conducted during winter or if conducted during abnormal ventilation. Otherwise consider re-testing after changes to foundation or HVAC and every 5 years
GREATER THAN 4 (<u>DURING OCCUPANCY</u>) AFTER CRM TESTING	Reduce radon in rooms to less than 4 through radon mitigation. Conduct CRM testing to verify radon reduction.

CRM: Continuous Radon Monitor

RESULTS & DISCUSSION

The laboratory report, which includes maps of each building with sampling locations is provided in Appendix B. Following are summary results for each building.

St. Michael-Albertville Middle School West

A total of 136 detectors were placed at St. Michael-Albertville Middle School West. 1 sample in room H203 was missing when the detectors were collected. The results for the other 135 detectors indicated that radon levels were above the action level of 4 pCi/L. See Table 1 below for a summary of the results:

TABLE 1: St. Michael-Albertville Middle School West RANGE OF RESULTS				
	0.0 – 1.9 pCi/L	2.0 – 2.9 pCi/L	3.0 – 3.9 pCi/L	≥ 4 pCi/L
Number of Tests	118	14	2	1 ¹

¹ Room F103 is greater than or equal to 4 pCi/L.

pCi/L: picocuries per liter

St. Michael-Albertville Middle School East

A total of 113 detectors were placed at St. Michael-Albertville Middle School East. 4 samples in rooms D415, gym 1, gym 3 and office work room were missing when the detectors were collected. The results for the other 109 detectors indicated that radon levels were below the action level of 4 pCi/L. See Table 2 below for a summary of the results:

TABLE 2: St. Michael-Albertville Middle School East RANGE OF RESULTS				
	0.0 – 1.9 pCi/L	2.0 – 2.9 pCi/L	3.0 – 3.9 pCi/L	≥ 4 pCi/L
Number of Tests	108	1	0	0 ¹

¹ All below action level.

pCi/L: picocuries per liter

Big Woods Elementary

A total of 86 test kits were placed at Big Woods Elementary. The results indicated that radon levels were below the action level of 4 pCi/L. See Table 3 below for a summary of the results:

TABLE 3: Big Woods Elementary RANGE OF RESULTS				
	0.0 – 1.9 pCi/L	2.0 – 2.9 pCi/L	3.0 – 3.9 pCi/L	≥ 4 pCi/L
Number of Tests	85	1	0	0 ¹
¹ All below action level				

pCi/L: picocuries per liter

Albertville Primary

A total of 73 test kits were placed at Albertville Primary. The results indicated that radon levels were below the action level of 4 pCi/L. See Table 4 below for a summary of the results:

TABLE 4: Albertville Primary RANGE OF RESULTS				
	0.0 – 1.9 pCi/L	2.0 – 2.9 pCi/L	3.0 – 3.9 pCi/L	≥ 4 pCi/L
Number of Tests	73	0	0	0 ¹
¹ All below action level				

pCi/L: picocuries per liter

CONCLUSIONS & RECOMMENDATIONS

The radon levels in one of the sample locations were above the EPA action level of 4 pCi/L. Follow-up testing should be conducted for all sampling results above the action level in occupied areas and non-occupied areas that are adjoining to occupiable areas or could be occupiable with little or no modification. Please refer to the following MDH guidelines. These guidelines should also be considered if test results indicate radon concentrations between 2-4 pCi/L:

1. If the initial test results are greater than 4 pCi/L, conduct Continuous Radon Monitoring short-term testing during the winter months.
2. If the average radon levels from the CRM are below 4 pCi/L during occupancy, then consider re-testing after changes to the building foundation or HVAC system and every 5 years.
3. If the average radon levels from the CRM are above 4 pCi/L during occupancy, then the building HVAC system settings (e.g. start time, night set-back temperature) should be adjusted to allow for improved airflow (and thereby reduce radon infiltration into the building). Conduct follow-up CRM testing to verify radon reduction. Continue to operate HVAC system under adjusted settings to keep radon levels within an acceptable range. Documentation should be kept with HVAC operation instructions for Paul Barthel and Terry Zerwas to ensure that settings are maintained in the future.
4. If the follow-up average radon levels from the CRM are still above 4 pCi/L during occupancy (after the HVAC adjustments have been made), then the district should contact a professional radon mitigation contractor for assistance. IEA recommends using a contact with experience specific to schools.

5. Mitigation is not complete until retests provide evidence of the initial status of system effectiveness. Conduct a Short-Term radon measurement no sooner than 24 hours after a mitigation system is operational and within 30 days after installation of the systems. Repeat the test as soon as possible or within one year under conditions that reasonably represent:
 - Average building operating conditions that normally exist during the greatest amount of significantly occupied time; and
 - Building operating conditions most likely to clearly characterize a radon hazard.

The EPA has established recommended guidelines for permissible radon concentrations in schools. The following are general recommendations for frequently-occupied areas of schools:

- Retest the building at least every 5 years and in conjunction with any sale of a building.
- In addition, be certain to test again when any of the following circumstances occur:
 - A new addition is constructed, or a significant renovation occurs.
 - A ground contact area not previously tested is occupied.
 - Heating or cooling systems are significantly altered resulting in changes to air pressures or distribution.
 - Ventilation is significantly altered by extensive weatherization, changes to mechanical systems or comparable procedures.
 - Significant openings to soil occur due to:
 - Ground water or slab surface water control systems (e.g., sumps, perimeter drain tile, shower/tub retrofits, etc.) or
 - Natural settlement causing major cracks to develop.
 - Earthquakes, construction blasting, or formation of sink holes nearby or
 - A mitigation system is altered, modified or repaired.
- Rooms should be retested during the winter heating season (i.e. under “closed” conditions) which is typically “worst case” conditions.
- Per Minnesota Statutes, section 123B.571, school districts are required to report radon test results at a school board meeting and report results to the MDH. IEA is able to assist with presenting results to the school board, and the MDH reporting. The MDH ‘School Radon Testing Forms’ are located in Appendix C.

For more information regarding radon, see the EPA’s A Citizen’s Guide to Radon at <http://www.epa.gov/radon>. MDH can be contacted at health.indoorair@state.mn.us or 651-201-4601.

GENERAL COMMENTS

The analysis and opinions expressed in this report are based upon data obtained from radon sampling district-wide and are representative of the locations and time period sampled. This report does not reflect variations in conditions that may occur across the site, property, or facility. Actual conditions may vary and may not become evident without further assessment.

The report is prepared for the exclusive use of our client for specific application to the project discussed and has been prepared in accordance with generally accepted environmental, health and safety practices. Other than as provided in the preceding sentence and in our Proposal #7570 dated October 17, 2018 regarding radon sampling services at the district locations, including the General Conditions attached thereto, no warranties are extended or made.

IEA appreciates the opportunity to submit this analysis to St. Michael-Albertville ISD #885. Should you require additional radon testing or have any questions regarding radon or any other environmental, health, or safety-related concerns, please do not hesitate to contact our office.

Sincerely,

IEA, Inc.

A handwritten signature in blue ink, appearing to read "Dan Holcomb", is positioned above the printed name and title.

Daniel Holcomb
EHS Account Manager

DH/khb 01232019

Enc.

Appendix A

Methodology

Sampling Methodology

IEA placed Air Chek, Inc. Pro Chek activated charcoal radon test kits designed specifically for the detection of gamma emissions caused by the decay of Radon-222 and its daughter products. The kit is made of a padded envelope which contains activated charcoal. The kit is placed during normal occupancy HVAC operations and sealed with vinyl tape after 72 to 96 hours of indoor exposure. Individual kits are uniquely identified with a number and corresponding bar code.

Upon receipt at the analytical laboratory, the kits are logged in using the unique numbers assigned to each kit. The kits are placed on a gamma detector to count the gamma emissions from the decay of radon adsorbed by the charcoal. A calibration factor determined in part by the exposure time and decay time is used to calculate the radon concentration. A correction factor is also applied for weight gain from any moisture absorbed by the charcoal during the sampling period.

Any unusual conditions are noted on the processing form and shown on the exposure report.

MDH and ANSI/AARST MALB 2014 Quality Assurance Measurements

IEA followed ANSI/AARST MALB 2014 and MDH recommendations for quality assurance measurements to ensure the accuracy of test results. Quality assurance measurements include side-by-side test kits (duplicates) and unexposed control test kits (blanks).

Duplicates are pairs of test kits placed 4-8 inches apart for the same test period. Duplicates are stored, placed, retrieved, and shipped to the laboratory for analysis in the same manner as the other test kits so that the laboratory cannot distinguish them. Since duplicates are placed side-by-side, the measured values for radon should be the same. The average of all duplicates' relative percent difference (RPD) should not exceed 25%. If they do, an investigation to identify the cause may be warranted and could include repeating the measurements.

Blanks can be used to determine whether the manufacturing, shipping, storage, or processing of the detector has "contaminated" your measurements. Blanks are opened and immediately re-sealed to keep room air from infiltrating the test kit. Blanks are labeled and shipped in the same manner as the exposed test kits so that the laboratory cannot distinguish them. Since blanks are not exposed to radon, their measurement value should be below the lower limit of detection.

Spikes are test kits that have been exposed in a chamber to a known concentration of radon. Using spiked measurements can help evaluate the accuracy of a laboratory analysis and/or how accurately test kits supplied by a laboratory measure radon. Spiked test kits are labeled and shipped in the same manner as the exposed test kits so that the laboratory cannot distinguish them.

Appendix B

Laboratory Report, Maps, and COC Cover Page

Radon test result report for:**ST. MICHAEL-ALBERTVILLE
ALBERTVILLE PRIMARY**

Kit #	Room Id	Started	Ended	pCi/L	Analyzed
9141153	100	2018-12-10 @ 2:00 pm	2018-12-13 @ 12:00 pm	1.5 ± 0.3	2018-12-14
9141155	101	2018-12-10 @ 2:00 pm	2018-12-13 @ 12:00 pm	1.1 ± 0.3	2018-12-14
9141149	102	2018-12-10 @ 2:00 pm	2018-12-13 @ 12:00 pm	1.4 ± 0.3	2018-12-14
9141157	103	2018-12-10 @ 2:00 pm	2018-12-13 @ 12:00 pm	1.5 ± 0.3	2018-12-14
9141167	104	2018-12-10 @ 2:00 pm	2018-12-13 @ 12:00 pm	1.1 ± 0.2	2018-12-14
9141159	105	2018-12-10 @ 2:00 pm	2018-12-13 @ 12:00 pm	1.0 ± 0.3	2018-12-14
9141156	106	2018-12-10 @ 2:00 pm	2018-12-13 @ 12:00 pm	1.0 ± 0.2	2018-12-14
9141168	107	2018-12-10 @ 2:00 pm	2018-12-13 @ 12:00 pm	1.0 ± 0.2	2018-12-14
9141169	1071	2018-12-10 @ 2:00 pm	2018-12-13 @ 12:00 pm	0.9 ± 0.3	2018-12-14
9141162	108	2018-12-10 @ 2:00 pm	2018-12-13 @ 12:00 pm	1.1 ± 0.3	2018-12-14
9141158	116	2018-12-10 @ 2:00 pm	2018-12-13 @ 12:00 pm	0.9 ± 0.3	2018-12-14
9141163	117	2018-12-10 @ 2:00 pm	2018-12-13 @ 12:00 pm	1.3 ± 0.3	2018-12-14
9141130	118	2018-12-10 @ 2:00 pm	2018-12-13 @ 12:00 pm	1.3 ± 0.2	2018-12-14
9141136	119	2018-12-10 @ 2:00 pm	2018-12-13 @ 12:00 pm	1.3 ± 0.3	2018-12-14
9141133	120	2018-12-10 @ 2:00 pm	2018-12-13 @ 12:00 pm	1.2 ± 0.3	2018-12-14
9141148	121	2018-12-10 @ 2:00 pm	2018-12-13 @ 12:00 pm	1.3 ± 0.3	2018-12-14
9141137	123	2018-12-10 @ 2:00 pm	2018-12-13 @ 12:00 pm	1.2 ± 0.3	2018-12-14
9141131	1231	2018-12-10 @ 2:00 pm	2018-12-13 @ 12:00 pm	1.2 ± 0.2	2018-12-14
9141142	200	2018-12-10 @ 2:00 pm	2018-12-13 @ 12:00 pm	1.5 ± 0.3	2018-12-14
9141144	201	2018-12-10 @ 2:00 pm	2018-12-13 @ 12:00 pm	1.2 ± 0.3	2018-12-14
9141145	2011	2018-12-10 @ 2:00 pm	2018-12-13 @ 12:00 pm	1.2 ± 0.3	2018-12-14
9141143	202	2018-12-10 @ 2:00 pm	2018-12-13 @ 12:00 pm	1.5 ± 0.3	2018-12-14
9141140	203	2018-12-10 @ 2:00 pm	2018-12-13 @ 12:00 pm	1.3 ± 0.3	2018-12-14
9141141	204	2018-12-10 @ 2:00 pm	2018-12-13 @ 12:00 pm	0.9 ± 0.3	2018-12-14
9141138	205	2018-12-10 @ 2:00 pm	2018-12-13 @ 12:00 pm	0.5 ± 0.2	2018-12-14
9141139	206	2018-12-10 @ 2:00 pm	2018-12-13 @ 12:00 pm	0.7 ± 0.2	2018-12-14
9141129	207	2018-12-10 @ 2:00 pm	2018-12-13 @ 12:00 pm	1.1 ± 0.2	2018-12-14
9141126	208	2018-12-10 @ 2:00 pm	2018-12-13 @ 12:00 pm	1.1 ± 0.3	2018-12-14
9141134	209	2018-12-10 @ 2:00 pm	2018-12-13 @ 12:00 pm	1.6 ± 0.3	2018-12-14
9141135	210	2018-12-10 @ 2:00 pm	2018-12-13 @ 12:00 pm	1.7 ± 0.3	2018-12-14
9141128	211	2018-12-10 @ 2:00 pm	2018-12-13 @ 12:00 pm	1.4 ± 0.3	2018-12-14
9141132	212	2018-12-10 @ 2:00 pm	2018-12-13 @ 12:00 pm	1.6 ± 0.3	2018-12-14
9141173	214	2018-12-10 @ 2:00 pm	2018-12-13 @ 12:00 pm	0.8 ± 0.2	2018-12-14
9141177	215	2018-12-10 @ 2:00 pm	2018-12-13 @ 12:00 pm	1.1 ± 0.2	2018-12-14
9141183	216	2018-12-10 @ 2:00 pm	2018-12-13 @ 12:00 pm	0.7 ± 0.2	2018-12-14
9139066	217	2018-12-10 @ 2:00 pm	2018-12-13 @ 12:00 pm	0.8 ± 0.2	2018-12-14
9139065	2171	2018-12-10 @ 2:00 pm	2018-12-13 @ 12:00 pm	0.8 ± 0.2	2018-12-14

Radon test result report for:

**ST. MICHAEL-ALBERTVILLE
ALBERTVILLE PRIMARY**

Kit #	Room Id	Started	Ended	pCi/L	Analyzed
9141176	218	2018-12-10 @ 2:00 pm	2018-12-13 @ 12:00 pm	0.6 ± 0.2	2018-12-14
9141170	220	2018-12-10 @ 2:00 pm	2018-12-13 @ 12:00 pm	1.8 ± 0.3	2018-12-14
9141165	2201	2018-12-10 @ 2:00 pm	2018-12-13 @ 12:00 pm	1.8 ± 0.3	2018-12-14
9141171	221	2018-12-10 @ 2:00 pm	2018-12-13 @ 12:00 pm	1.4 ± 0.3	2018-12-14
9141172	222	2018-12-10 @ 2:00 pm	2018-12-13 @ 12:00 pm	1.6 ± 0.3	2018-12-14
9139072	301	2018-12-10 @ 2:00 pm	2018-12-13 @ 12:00 pm	1.1 ± 0.3	2018-12-14
9141154	3011	2018-12-10 @ 2:00 pm	2018-12-13 @ 12:00 pm	1.3 ± 0.3	2018-12-14
9139073	302	2018-12-10 @ 2:00 pm	2018-12-13 @ 12:00 pm	1.0 ± 0.3	2018-12-14
9139069	303	2018-12-10 @ 2:00 pm	2018-12-13 @ 12:00 pm	1.2 ± 0.3	2018-12-14
9139070	304	2018-12-10 @ 1:00 pm	2018-12-13 @ 12:00 pm	1.3 ± 0.3	2018-12-14
9139068	305	2018-12-10 @ 1:00 pm	2018-12-13 @ 12:00 pm	0.6 ± 0.2	2018-12-14
9141178	306	2018-12-10 @ 1:00 pm	2018-12-13 @ 12:00 pm	1.0 ± 0.3	2018-12-14
9141182	307	2018-12-10 @ 1:00 pm	2018-12-13 @ 12:00 pm	1.3 ± 0.3	2018-12-14
9139075	308	2018-12-10 @ 1:00 pm	2018-12-13 @ 12:00 pm	1.4 ± 0.3	2018-12-14
9139071	3081	2018-12-10 @ 1:00 pm	2018-12-13 @ 12:00 pm	1.4 ± 0.3	2018-12-14
9141181	309	2018-12-10 @ 2:00 pm	2018-12-13 @ 12:00 pm	1.4 ± 0.3	2018-12-14
9139067	310	2018-12-10 @ 2:00 pm	2018-12-13 @ 12:00 pm	1.3 ± 0.3	2018-12-14
9141164	CAFETERIA	2018-12-10 @ 2:00 pm	2018-12-13 @ 12:00 pm	0.8 ± 0.3	2018-12-14
9141122	CONF	2018-12-10 @ 2:00 pm	2018-12-13 @ 12:00 pm	1.7 ± 0.3	2018-12-14
9141161	CUSTODIAL OFFICES	2018-12-10 @ 2:00 pm	2018-12-13 @ 12:00 pm	1.7 ± 0.3	2018-12-14
9141125	FIELD BLANK 1	2018-12-10 @ 2:00 pm	2018-12-13 @ 12:00 pm	< 0.3	2018-12-14
9141124	FIELD BLANK 2	2018-12-10 @ 2:00 pm	2018-12-13 @ 12:00 pm	< 0.3	2018-12-14
9141127	FIELD BLANK 3	2018-12-10 @ 2:00 pm	2018-12-13 @ 12:00 pm	< 0.3	2018-12-14
9141123	FIELD BLANK 4	2018-12-10 @ 2:00 pm	2018-12-13 @ 12:00 pm	< 0.3	2018-12-14
9141175	GYM	2018-12-10 @ 2:00 pm	2018-12-13 @ 12:00 pm	< 0.3	2018-12-14
9141160	KIDS PLAY OFFICE	2018-12-10 @ 2:00 pm	2018-12-13 @ 12:00 pm	< 0.3	2018-12-14
9141166	KITCHEN	2018-12-10 @ 2:00 pm	2018-12-13 @ 12:00 pm	0.6 ± 0.2	2018-12-14
9141174	KITCHEN OFFICE	2018-12-10 @ 2:00 pm	2018-12-13 @ 12:00 pm	1.4 ± 0.3	2018-12-14
9141179	MAIN OFFICE	2018-12-10 @ 1:00 pm	2018-12-13 @ 12:00 pm	1.3 ± 0.3	2018-12-14
9139074	MULTIPLE PURPOSES	2018-12-10 @ 2:00 pm	2018-12-13 @ 12:00 pm	1.1 ± 0.3	2018-12-14
9141150	NURSE	2018-12-10 @ 2:00 pm	2018-12-13 @ 12:00 pm	1.2 ± 0.3	2018-12-14
9141146	OFFICE	2018-12-10 @ 2:00 pm	2018-12-13 @ 12:00 pm	1.6 ± 0.3	2018-12-14
9141151	PRINCIPAL	2018-12-10 @ 2:00 pm	2018-12-13 @ 12:00 pm	1.7 ± 0.3	2018-12-14
9141180	RECIEVING	2018-12-10 @ 1:00 pm	2018-12-13 @ 12:00 pm	1.6 ± 0.3	2018-12-14
9141152	SOCIAL WORKER	2018-12-10 @ 2:00 pm	2018-12-13 @ 12:00 pm	1.8 ± 0.3	2018-12-14
9141147	WORKROOM	2018-12-10 @ 2:00 pm	2018-12-13 @ 12:00 pm	0.9 ± 0.2	2018-12-14

Radon test result report for:**ST. MICHAEL-ALBERTVILLE
BIG WOODS ELEMENTARY**

Kit #	Room Id	Started	Ended	pCi/L	Analyzed
9141206	415	2018-12-10 @ 12:00 pm	2018-12-13 @ 2:00 pm	0.5 ± 0.2	2018-12-14
9141207	419	2018-12-10 @ 12:00 pm	2018-12-13 @ 2:00 pm	1.3 ± 0.2	2018-12-14
9141203	A109	2018-12-10 @ 12:00 pm	2018-12-13 @ 2:00 pm	1.0 ± 0.2	2018-12-14
9141194	A110	2018-12-10 @ 12:00 pm	2018-12-13 @ 2:00 pm	0.7 ± 0.2	2018-12-14
9141193	A111	2018-12-10 @ 12:00 pm	2018-12-13 @ 2:00 pm	1.1 ± 0.2	2018-12-14
9141202	A112	2018-12-10 @ 12:00 pm	2018-12-13 @ 2:00 pm	1.1 ± 0.2	2018-12-14
9141217	A114	2018-12-10 @ 12:00 pm	2018-12-13 @ 2:00 pm	1.1 ± 0.3	2018-12-14
9141204	A115	2018-12-10 @ 12:00 pm	2018-12-13 @ 2:00 pm	1.4 ± 0.2	2018-12-14
9141210	A116	2018-12-10 @ 12:00 pm	2018-12-13 @ 2:00 pm	1.6 ± 0.2	2018-12-14
9141209	A117	2018-12-10 @ 12:00 pm	2018-12-13 @ 2:00 pm	0.9 ± 0.2	2018-12-14
9141195	A118	2018-12-10 @ 12:00 pm	2018-12-13 @ 2:00 pm	0.8 ± 0.2	2018-12-14
9141196	A119	2018-12-10 @ 12:00 pm	2018-12-13 @ 2:00 pm	1.4 ± 0.3	2018-12-14
9141190	A120	2018-12-10 @ 12:00 pm	2018-12-13 @ 2:00 pm	1.2 ± 0.2	2018-12-14
9141191	A121	2018-12-10 @ 12:00 pm	2018-12-13 @ 2:00 pm	0.7 ± 0.2	2018-12-14
9141192	A123	2018-12-10 @ 1:00 pm	2018-12-13 @ 2:00 pm	1.0 ± 0.2	2018-12-14
9141201	A124	2018-12-10 @ 1:00 pm	2018-12-13 @ 2:00 pm	1.4 ± 0.3	2018-12-14
9141228	A125	2018-12-10 @ 1:00 pm	2018-12-13 @ 2:00 pm	1.3 ± 0.2	2018-12-14
9141198	A126	2018-12-10 @ 12:00 pm	2018-12-13 @ 2:00 pm	1.1 ± 0.2	2018-12-14
9141197	A1261	2018-12-10 @ 12:00 pm	2018-12-13 @ 2:00 pm	1.0 ± 0.2	2018-12-14
9141233	ASSISTANT PRINCIPAL	2018-12-10 @ 12:00 pm	2018-12-13 @ 2:00 pm	0.9 ± 0.2	2018-12-14
9139503	B209	2018-12-10 @ 1:00 pm	2018-12-13 @ 2:00 pm	0.9 ± 0.2	2018-12-14
9141265	B210	2018-12-10 @ 1:00 pm	2018-12-13 @ 2:00 pm	1.1 ± 0.2	2018-12-14
9141264	B2101	2018-12-10 @ 1:00 pm	2018-12-13 @ 2:00 pm	1.2 ± 0.3	2018-12-14
9141266	B211	2018-12-10 @ 1:00 pm	2018-12-13 @ 2:00 pm	2.0 ± 0.3	2018-12-14
9139504	B212	2018-12-10 @ 1:00 pm	2018-12-13 @ 2:00 pm	1.6 ± 0.3	2018-12-14
9129341	B214	2018-12-10 @ 1:00 pm	2018-12-13 @ 2:00 pm	1.2 ± 0.2	2018-12-14
9141262	B215	2018-12-10 @ 1:00 pm	2018-12-13 @ 2:00 pm	1.2 ± 0.2	2018-12-14
9141263	B216	2018-12-10 @ 1:00 pm	2018-12-13 @ 2:00 pm	1.3 ± 0.3	2018-12-14
9139513	B217	2018-12-10 @ 1:00 pm	2018-12-13 @ 2:00 pm	1.2 ± 0.3	2018-12-14
9139510	B2171	2018-12-10 @ 1:00 pm	2018-12-13 @ 2:00 pm	1.3 ± 0.3	2018-12-14
9129339	B218	2018-12-10 @ 1:00 pm	2018-12-13 @ 2:00 pm	1.4 ± 0.3	2018-12-14
9139502	B219	2018-12-10 @ 1:00 pm	2018-12-13 @ 2:00 pm	1.5 ± 0.3	2018-12-14
9129346	B2191	2018-12-10 @ 1:00 pm	2018-12-13 @ 2:00 pm	1.5 ± 0.3	2018-12-14
9129340	B220	2018-12-10 @ 1:00 pm	2018-12-13 @ 2:00 pm	1.9 ± 0.3	2018-12-14
9139501	B221	2018-12-10 @ 1:00 pm	2018-12-13 @ 2:00 pm	0.8 ± 0.2	2018-12-14
9129335	B223	2018-12-10 @ 1:00 pm	2018-12-13 @ 2:00 pm	0.9 ± 0.3	2018-12-14
9129337	B224	2018-12-10 @ 1:00 pm	2018-12-13 @ 2:00 pm	1.1 ± 0.2	2018-12-14

Radon test result report for:**ST. MICHAEL-ALBERTVILLE
BIG WOODS ELEMENTARY**

Kit #	Room Id	Started	Ended	pCi/L	Analyzed
9129336	B225	2018-12-10 @ 1:00 pm	2018-12-13 @ 2:00 pm	1.3 ± 0.3	2018-12-14
9139511	B226	2018-12-10 @ 1:00 pm	2018-12-13 @ 2:00 pm	0.8 ± 0.2	2018-12-14
9141261	C311	2018-12-10 @ 1:00 pm	2018-12-13 @ 2:00 pm	0.8 ± 0.2	2018-12-14
9141253	C313	2018-12-10 @ 1:00 pm	2018-12-13 @ 2:00 pm	0.8 ± 0.2	2018-12-14
9141251	C315	2018-12-10 @ 1:00 pm	2018-12-13 @ 2:00 pm	0.9 ± 0.2	2018-12-14
9141255	C316	2018-12-10 @ 1:00 pm	2018-12-13 @ 2:00 pm	0.8 ± 0.2	2018-12-14
9141254	C317	2018-12-10 @ 1:00 pm	2018-12-13 @ 2:00 pm	0.8 ± 0.2	2018-12-14
9141256	C318	2018-12-10 @ 1:00 pm	2018-12-13 @ 2:00 pm	0.7 ± 0.2	2018-12-14
9141260	C319	2018-12-10 @ 1:00 pm	2018-12-13 @ 2:00 pm	0.6 ± 0.2	2018-12-14
9141258	C320	2018-12-10 @ 1:00 pm	2018-12-13 @ 2:00 pm	0.5 ± 0.2	2018-12-14
9141259	C3201	2018-12-10 @ 1:00 pm	2018-12-13 @ 2:00 pm	0.6 ± 0.2	2018-12-14
9141257	C321	2018-12-10 @ 1:00 pm	2018-12-13 @ 2:00 pm	< 0.3	2018-12-14
9141252	C322	2018-12-10 @ 1:00 pm	2018-12-13 @ 2:00 pm	0.5 ± 0.2	2018-12-14
9141250	C3221	2018-12-10 @ 1:00 pm	2018-12-13 @ 2:00 pm	0.7 ± 0.2	2018-12-14
9141229	C323	2018-12-10 @ 1:00 pm	2018-12-13 @ 2:00 pm	0.7 ± 0.2	2018-12-14
9141186	C325	2018-12-10 @ 1:00 pm	2018-12-13 @ 2:00 pm	0.7 ± 0.2	2018-12-14
9141185	C326	2018-12-10 @ 1:00 pm	2018-12-13 @ 2:00 pm	0.7 ± 0.2	2018-12-14
9141189	C327	2018-12-10 @ 1:00 pm	2018-12-13 @ 2:00 pm	0.8 ± 0.2	2018-12-14
9141187	C328	2018-12-10 @ 1:00 pm	2018-12-13 @ 2:00 pm	0.7 ± 0.2	2018-12-14
9141199	C329	2018-12-10 @ 1:00 pm	2018-12-13 @ 2:00 pm	0.6 ± 0.2	2018-12-14
9141188	C330	2018-12-10 @ 1:00 pm	2018-12-13 @ 2:00 pm	< 0.3	2018-12-14
9141184	C3301	2018-12-10 @ 1:00 pm	2018-12-13 @ 2:00 pm	0.6 ± 0.2	2018-12-14
9141200	C332	2018-12-10 @ 1:00 pm	2018-12-13 @ 2:00 pm	0.6 ± 0.2	2018-12-14
9141205	CAFETERIA	2018-12-10 @ 12:00 pm	2018-12-13 @ 2:00 pm	1.0 ± 0.2	2018-12-14
9141227	CONE ROOM	2018-12-10 @ 12:00 pm	2018-12-13 @ 2:00 pm	0.8 ± 0.2	2018-12-14
9141211	CUSTODIAL OFFICES	2018-12-10 @ 12:00 pm	2018-12-13 @ 2:00 pm	1.1 ± 0.2	2018-12-14
9141216	CUSTODIAL OFFICES 1	2018-12-10 @ 12:00 pm	2018-12-13 @ 2:00 pm	1.3 ± 0.2	2018-12-14
9141213	D409	2018-12-10 @ 12:00 pm	2018-12-13 @ 2:00 pm	0.5 ± 0.2	2018-12-14
9141218	D410	2018-12-10 @ 12:00 pm	2018-12-13 @ 2:00 pm	1.5 ± 0.3	2018-12-14
9141219	D412	2018-12-10 @ 12:00 pm	2018-12-13 @ 2:00 pm	1.1 ± 0.2	2018-12-14
9141224	D431	2018-12-10 @ 12:00 pm	2018-12-13 @ 2:00 pm	0.7 ± 0.2	2018-12-14
9141222	D4311	2018-12-10 @ 12:00 pm	2018-12-13 @ 2:00 pm	0.7 ± 0.2	2018-12-14
9141244	FIELD BLANK 1	2018-12-10 @ 1:00 pm	2018-12-13 @ 2:00 pm	< 0.3	2018-12-14
9141245	FIELD BLANK 2	2018-12-10 @ 1:00 pm	2018-12-13 @ 2:00 pm	< 0.3	2018-12-14
9141238	FIELD BLANK 3	2018-12-10 @ 1:00 pm	2018-12-13 @ 2:00 pm	< 0.3	2018-12-14
9141239	FIELD BLANK 4	2018-12-10 @ 1:00 pm	2018-12-13 @ 2:00 pm	< 0.3	2018-12-14
9141242	FIELD BLANK 5	2018-12-10 @ 1:00 pm	2018-12-13 @ 2:00 pm	< 0.3	2018-12-14

January 15, 2019

**** LABORATORY ANALYSIS REPORT ****

Radon test result report for:

**ST. MICHAEL-ALBERTVILLE
BIG WOODS ELEMENTARY**

Kit #	Room Id	Started	Ended	pCi/L	Analyzed
9141212	GYM OFFICE	2018-12-10 @ 12:00 pm	2018-12-13 @ 2:00 pm	0.9 ± 0.2	2018-12-14
9141225	HEALTH OFFICE	2018-12-10 @ 12:00 pm	2018-12-13 @ 2:00 pm	1.4 ± 0.3	2018-12-14
9141214	KITCHEN	2018-12-10 @ 12:00 pm	2018-12-13 @ 2:00 pm	1.0 ± 0.2	2018-12-14
9141232	KITCHEN OFFICE	2018-12-10 @ 12:00 pm	2018-12-13 @ 2:00 pm	1.4 ± 0.3	2018-12-14
9141248	MEDIA CENTER	2018-12-10 @ 1:00 pm	2018-12-13 @ 2:00 pm	0.7 ± 0.2	2018-12-14
9141230	NE GYM	2018-12-10 @ 12:00 pm	2018-12-13 @ 2:00 pm	1.1 ± 0.2	2018-12-14
9141231	OFFICE	2018-12-10 @ 12:00 pm	2018-12-13 @ 2:00 pm	0.8 ± 0.2	2018-12-14
9141223	PLANNING ROOM	2018-12-10 @ 12:00 pm	2018-12-13 @ 2:00 pm	0.8 ± 0.2	2018-12-14
9141226	PRINCIPAL	2018-12-10 @ 12:00 pm	2018-12-13 @ 2:00 pm	1.2 ± 0.2	2018-12-14
9141215	RECIEVING	2018-12-10 @ 12:00 pm	2018-12-13 @ 2:00 pm	1.1 ± 0.2	2018-12-14
9141220	STAFF LOUNGE	2018-12-10 @ 12:00 pm	2018-12-13 @ 2:00 pm	1.4 ± 0.3	2018-12-14
9141221	STAFF LOUNGE 1	2018-12-10 @ 12:00 pm	2018-12-13 @ 2:00 pm	0.9 ± 0.2	2018-12-14
9141208	SW GYM	2018-12-10 @ 12:00 pm	2018-12-13 @ 2:00 pm	0.9 ± 0.2	2018-12-14

Air Chek 1936 Butler Bridge Rd, Mills River, NC 28759-3892 Phone: (828) 684-0893 Fax: (828) 684-8498

Radon test result report for:**ST. MICHAEL-ALBERTVILLE
EAST MIDDLE SCHOOL**

Kit #	Room Id	Started	Ended	pCi/L	Analyzed
9141294	A100	2018-12-10 @ 11:00 am	2018-12-13 @ 1:00 pm	0.7 ± 0.2	2018-12-14
9141290	A1001	2018-12-10 @ 11:00 am	2018-12-13 @ 1:00 pm	0.8 ± 0.3	2018-12-14
9141284	A101	2018-12-10 @ 11:00 am	2018-12-13 @ 1:00 pm	< 0.3	2018-12-14
9141289	A102	2018-12-10 @ 11:00 am	2018-12-13 @ 1:00 pm	0.6 ± 0.3	2018-12-14
9141287	A104	2018-12-10 @ 11:00 am	2018-12-13 @ 1:00 pm	1.0 ± 0.3	2018-12-14
9141288	A105	2018-12-10 @ 11:00 am	2018-12-13 @ 1:00 pm	< 0.3	2018-12-14
9141286	A107	2018-12-10 @ 11:00 am	2018-12-13 @ 1:00 pm	0.6 ± 0.2	2018-12-14
9141285	A108	2018-12-10 @ 11:00 am	2018-12-13 @ 1:00 pm	< 0.3	2018-12-14
9141283	A109	2018-12-10 @ 11:00 am	2018-12-13 @ 1:00 pm	< 0.3	2018-12-14
9139009	A110	2018-12-10 @ 11:00 am	2018-12-13 @ 1:00 pm	0.8 ± 0.2	2018-12-14
9141279	A111	2018-12-10 @ 11:00 am	2018-12-13 @ 1:00 pm	0.9 ± 0.2	2018-12-14
9141275	A112	2018-12-10 @ 11:00 am	2018-12-13 @ 1:00 pm	1.1 ± 0.2	2018-12-14
9141278	A113	2018-12-10 @ 11:00 am	2018-12-13 @ 1:00 pm	0.9 ± 0.2	2018-12-14
9141268	A114	2018-12-10 @ 11:00 am	2018-12-13 @ 1:00 pm	0.8 ± 0.2	2018-12-14
9141267	A1141	2018-12-10 @ 11:00 am	2018-12-13 @ 1:00 pm	1.0 ± 0.2	2018-12-14
9141277	A115	2018-12-10 @ 11:00 am	2018-12-13 @ 1:00 pm	1.3 ± 0.3	2018-12-14
9139094	A117	2018-12-10 @ 11:00 am	2018-12-13 @ 1:00 pm	1.4 ± 0.3	2018-12-14
9139100	A118	2018-12-10 @ 11:00 am	2018-12-13 @ 1:00 pm	1.1 ± 0.2	2018-12-14
9139064	A1181	2018-12-10 @ 11:00 am	2018-12-13 @ 1:00 pm	1.0 ± 0.2	2018-12-14
9139052	A119	2018-12-10 @ 11:00 am	2018-12-13 @ 1:00 pm	1.2 ± 0.2	2018-12-14
9141282	A137	2018-12-10 @ 11:00 am	2018-12-13 @ 1:00 pm	< 0.3	2018-12-14
9141281	A138	2018-12-10 @ 11:00 am	2018-12-13 @ 1:00 pm	< 0.3	2018-12-14
9139019	B102	2018-12-10 @ 12:00 pm	2018-12-13 @ 1:00 pm	1.3 ± 0.2	2018-12-14
9139055	B200	2018-12-10 @ 12:00 pm	2018-12-13 @ 1:00 pm	0.9 ± 0.2	2018-12-14
9139033	B2001	2018-12-10 @ 12:00 pm	2018-12-13 @ 1:00 pm	0.9 ± 0.2	2018-12-14
9139017	B201	2018-12-10 @ 12:00 pm	2018-12-13 @ 1:00 pm	0.9 ± 0.3	2018-12-14
9139022	B204	2018-12-10 @ 12:00 pm	2018-12-13 @ 1:00 pm	0.7 ± 0.2	2018-12-14
9139021	B2041	2018-12-10 @ 12:00 pm	2018-12-13 @ 1:00 pm	0.8 ± 0.2	2018-12-14
9139024	B205	2018-12-10 @ 12:00 pm	2018-12-13 @ 1:00 pm	0.9 ± 0.2	2018-12-14
9139032	B207	2018-12-10 @ 12:00 pm	2018-12-13 @ 1:00 pm	1.0 ± 0.2	2018-12-14
9139025	B208	2018-12-10 @ 12:00 pm	2018-12-13 @ 1:00 pm	0.9 ± 0.3	2018-12-14
9139023	B209	2018-12-10 @ 12:00 pm	2018-12-13 @ 1:00 pm	0.8 ± 0.2	2018-12-14
9141270	B210	2018-12-10 @ 11:00 am	2018-12-13 @ 1:00 pm	0.9 ± 0.3	2018-12-14
9139054	B211	2018-12-10 @ 12:00 pm	2018-12-13 @ 1:00 pm	1.0 ± 0.3	2018-12-14
9139053	B212	2018-12-10 @ 12:00 pm	2018-12-13 @ 1:00 pm	0.9 ± 0.3	2018-12-14
9139056	B213	2018-12-10 @ 12:00 pm	2018-12-13 @ 1:00 pm	1.0 ± 0.3	2018-12-14
9141274	B214	2018-12-10 @ 11:00 am	2018-12-13 @ 1:00 pm	1.1 ± 0.3	2018-12-14

Radon test result report for:**ST. MICHAEL-ALBERTVILLE
EAST MIDDLE SCHOOL**

Kit #	Room Id	Started	Ended	pCi/L	Analyzed
9141280	B215	2018-12-10 @ 11:00 am	2018-12-13 @ 1:00 pm	0.7 ± 0.2	2018-12-14
9139091	B217	2018-12-10 @ 11:00 am	2018-12-13 @ 1:00 pm	< 0.3	2018-12-14
9139098	B219	2018-12-10 @ 11:00 am	2018-12-13 @ 1:00 pm	< 0.3	2018-12-14
9139095	B220	2018-12-10 @ 11:00 am	2018-12-13 @ 1:00 pm	< 0.3	2018-12-14
9139050	B221	2018-12-10 @ 11:00 am	2018-12-13 @ 1:00 pm	0.6 ± 0.2	2018-12-14
9139060	B222	2018-12-10 @ 11:00 am	2018-12-13 @ 1:00 pm	< 0.3	2018-12-14
9139093	B223	2018-12-10 @ 11:00 am	2018-12-13 @ 1:00 pm	< 0.3	2018-12-14
9139051	B224	2018-12-10 @ 11:00 am	2018-12-13 @ 1:00 pm	1.5 ± 0.3	2018-12-14
9139096	B225	2018-12-10 @ 11:00 am	2018-12-13 @ 1:00 pm	1.2 ± 0.2	2018-12-14
9141269	B231	2018-12-10 @ 11:00 am	2018-12-13 @ 1:00 pm	1.0 ± 0.2	2018-12-14
9141272	B232	2018-12-10 @ 11:00 am	2018-12-13 @ 1:00 pm	1.3 ± 0.3	2018-12-14
9141276	B234	2018-12-10 @ 11:00 am	2018-12-13 @ 1:00 pm	0.7 ± 0.2	2018-12-14
9139020	B237	2018-12-10 @ 12:00 pm	2018-12-13 @ 1:00 pm	0.7 ± 0.2	2018-12-14
9139026	B238	2018-12-10 @ 12:00 pm	2018-12-13 @ 1:00 pm	1.1 ± 0.3	2018-12-14
9139005	BACK CAFETERIA	2018-12-10 @ 11:00 am	2018-12-13 @ 1:00 pm	1.0 ± 0.2	2018-12-14
9139004	BOYS TEAM LOCKERS	2018-12-10 @ 11:00 am	2018-12-13 @ 1:00 pm	1.3 ± 0.2	2018-12-14
9139047	C300	2018-12-10 @ 12:00 pm	2018-12-13 @ 1:00 pm	1.3 ± 0.3	2018-12-14
9139039	C301	2018-12-10 @ 12:00 pm	2018-12-13 @ 1:00 pm	1.3 ± 0.2	2018-12-14
9139045	C304	2018-12-10 @ 12:00 pm	2018-12-13 @ 1:00 pm	1.6 ± 0.3	2018-12-14
9139027	C305	2018-12-10 @ 11:00 am	2018-12-13 @ 1:00 pm	1.1 ± 0.2	2018-12-14
9139018	C3051	2018-12-10 @ 11:00 am	2018-12-13 @ 1:00 pm	1.2 ± 0.3	2018-12-14
9139046	C307	2018-12-10 @ 11:00 am	2018-12-13 @ 1:00 pm	2.4 ± 0.3	2018-12-14
9139048	C308	2018-12-10 @ 11:00 am	2018-12-13 @ 1:00 pm	1.8 ± 0.3	2018-12-14
9139030	C309	2018-12-10 @ 11:00 am	2018-12-13 @ 1:00 pm	1.5 ± 0.3	2018-12-14
9139038	C310	2018-12-10 @ 11:00 am	2018-12-13 @ 1:00 pm	0.9 ± 0.2	2018-12-14
9139037	C3101	2018-12-10 @ 11:00 am	2018-12-13 @ 1:00 pm	0.9 ± 0.2	2018-12-14
9139042	C312	2018-12-10 @ 11:00 am	2018-12-13 @ 1:00 pm	0.6 ± 0.2	2018-12-14
9139034	C313	2018-12-10 @ 11:00 am	2018-12-13 @ 1:00 pm	0.9 ± 0.2	2018-12-14
9139035	C314	2018-12-10 @ 11:00 am	2018-12-13 @ 1:00 pm	1.0 ± 0.3	2018-12-14
9139040	C315	2018-12-10 @ 11:00 am	2018-12-13 @ 1:00 pm	0.7 ± 0.2	2018-12-14
9139041	C316	2018-12-10 @ 11:00 am	2018-12-13 @ 1:00 pm	0.8 ± 0.2	2018-12-14
9139049	C319	2018-12-10 @ 11:00 am	2018-12-13 @ 1:00 pm	0.8 ± 0.2	2018-12-14
9139099	C320	2018-12-10 @ 11:00 am	2018-12-13 @ 1:00 pm	0.8 ± 0.3	2018-12-14
9139092	C321	2018-12-10 @ 11:00 am	2018-12-13 @ 1:00 pm	0.8 ± 0.2	2018-12-14
9139097	C3211	2018-12-10 @ 11:00 am	2018-12-13 @ 1:00 pm	0.8 ± 0.2	2018-12-14
9139063	C322	2018-12-10 @ 11:00 am	2018-12-13 @ 1:00 pm	0.9 ± 0.2	2018-12-14
9139059	C323	2018-12-10 @ 11:00 am	2018-12-13 @ 1:00 pm	1.3 ± 0.2	2018-12-14

Radon test result report for:

**ST. MICHAEL-ALBERTVILLE
EAST MIDDLE SCHOOL**

Kit #	Room Id	Started	Ended	pCi/L	Analyzed
9139028	C337	2018-12-10 @ 12:00 pm	2018-12-13 @ 1:00 pm	1.3 ± 0.3	2018-12-14
9139029	C338	2018-12-10 @ 12:00 pm	2018-12-13 @ 1:00 pm	1.5 ± 0.3	2018-12-14
9139514	D400	2018-12-10 @ 10:00 am	2018-12-13 @ 1:00 pm	1.1 ± 0.2	2018-12-14
9141300	D4001	2018-12-10 @ 10:00 am	2018-12-13 @ 1:00 pm	1.2 ± 0.2	2018-12-14
9139008	D408	2018-12-10 @ 10:00 am	2018-12-13 @ 1:00 pm	0.6 ± 0.2	2018-12-14
9139011	D412	2018-12-10 @ 10:00 am	2018-12-13 @ 2:00 pm	1.4 ± 0.3	2018-12-14
9139012	D413	2018-12-10 @ 10:00 am	2018-12-13 @ 2:00 pm	1.5 ± 0.2	2018-12-14
9139010	D414	2018-12-10 @ 10:00 am	2018-12-13 @ 1:00 pm	1.1 ± 0.2	2018-12-14
9139505	D416	2018-12-10 @ 10:00 am	2018-12-13 @ 1:00 pm	0.8 ± 0.2	2018-12-14
9139015	D418	2018-12-10 @ 10:00 am	2018-12-13 @ 1:00 pm	1.0 ± 0.2	2018-12-14
9139013	D419	2018-12-10 @ 10:00 am	2018-12-13 @ 1:00 pm	0.7 ± 0.2	2018-12-14
9139016	DEAN OF STUDENTS	2018-12-10 @ 10:00 am	2018-12-13 @ 1:00 pm	1.0 ± 0.3	2018-12-14
9139031	FIELD BLANK 1	2018-12-10 @ 12:00 pm	2018-12-13 @ 1:00 pm	< 0.3	2018-12-14
9139058	FIELD BLANK 2	2018-12-10 @ 12:00 pm	2018-12-13 @ 1:00 pm	< 0.3	2018-12-14
9139036	FIELD BLANK 3	2018-12-10 @ 12:00 pm	2018-12-13 @ 1:00 pm	< 0.3	2018-12-14
9139057	FIELD BLANK 4	2018-12-10 @ 12:00 pm	2018-12-13 @ 1:00 pm	< 0.3	2018-12-14
9139061	FIELD BLANK 5	2018-12-10 @ 12:00 pm	2018-12-13 @ 1:00 pm	< 0.3	2018-12-14
9139006	FRONT CAFETERIA	2018-12-10 @ 11:00 am	2018-12-13 @ 1:00 pm	0.9 ± 0.2	2018-12-14
9139508	FRONT OFFICE	2018-12-10 @ 10:00 am	2018-12-13 @ 1:00 pm	0.6 ± 0.2	2018-12-14
9139507	FRONT OFFICE 1	2018-12-10 @ 10:00 am	2018-12-13 @ 1:00 pm	0.9 ± 0.2	2018-12-14
9141298	GIRLS LOCKER ROOM	2018-12-10 @ 11:00 am	2018-12-13 @ 1:00 pm	0.7 ± 0.2	2018-12-14
9139003	GYM2	2018-12-10 @ 11:00 am	2018-12-13 @ 1:00 pm	0.7 ± 0.2	2018-12-14
9141299	GYMNASTICS	2018-12-10 @ 11:00 am	2018-12-13 @ 1:00 pm	1.6 ± 0.3	2018-12-14
9141295	HONOR LOUNGE	2018-12-10 @ 10:00 am	2018-12-13 @ 1:00 pm	0.7 ± 0.2	2018-12-14
9141293	KITCHEN	2018-12-10 @ 11:00 am	2018-12-13 @ 1:00 pm	0.9 ± 0.2	2018-12-14
9141291	KITCHEN O	2018-12-10 @ 11:00 am	2018-12-13 @ 1:00 pm	0.7 ± 0.2	2018-12-14
9141292	LOADING DOCK	2018-12-10 @ 11:00 am	2018-12-13 @ 1:00 pm	0.9 ± 0.2	2018-12-14
9141271	MEDIA CENTER	2018-12-10 @ 11:00 am	2018-12-13 @ 1:00 pm	1.0 ± 0.3	2018-12-14
9141273	MEDIA OFFICE	2018-12-10 @ 11:00 am	2018-12-13 @ 1:00 pm	1.1 ± 0.2	2018-12-14
9139506	OFFICE PARA	2018-12-10 @ 10:00 am	2018-12-13 @ 1:00 pm	0.5 ± 0.2	2018-12-14
9139043	PLANNING ROOM	2018-12-10 @ 11:00 am	2018-12-13 @ 1:00 pm	0.6 ± 0.2	2018-12-14
9141297	POOL	2018-12-10 @ 11:00 am	2018-12-13 @ 1:00 pm	< 0.3	2018-12-14
9139001	WEIGHT ROOM	2018-12-10 @ 10:00 am	2018-12-13 @ 1:00 pm	0.6 ± 0.2	2018-12-14

Radon test result report for:**ST. MICHAEL-ALBERTVILLE
WEST MIDDLE SCHOOL**

Kit #	Room Id	Started	Ended	pCi/L	Analyzed
9139158	136	2018-12-10 @ 8:00 am	2018-12-13 @ 11:00 am	< 0.3	2018-12-14
9141112	A-L OFFICE	2018-12-10 @ 9:00 am	2018-12-13 @ 10:00 am	0.7 ± 0.2	2018-12-14
9139185	A201	2018-12-10 @ 10:00 am	2018-12-13 @ 11:00 am	0.9 ± 0.2	2018-12-14
9139186	A202	2018-12-10 @ 10:00 am	2018-12-13 @ 11:00 am	0.8 ± 0.2	2018-12-14
9139191	ADMIN SERVICE	2018-12-10 @ 9:00 am	2018-12-13 @ 11:00 am	< 0.3	2018-12-14
9139084	ASSISTANT PRINCIPAL	2018-12-10 @ 9:00 am	2018-12-13 @ 10:00 am	1.5 ± 0.3	2018-12-14
9139178	AUDITORIUM	2018-12-10 @ 9:00 am	2018-12-13 @ 11:00 am	0.9 ± 0.2	2018-12-14
9139173	AUDITORIUM 1	2018-12-10 @ 9:00 am	2018-12-13 @ 11:00 am	0.7 ± 0.2	2018-12-14
9139082	BACK CAFETERIA	2018-12-10 @ 8:00 am	2018-12-13 @ 11:00 am	< 0.3	2018-12-14
9139161	BOYS TEAM LOCKERS	2018-12-10 @ 10:00 am	2018-12-13 @ 12:00 pm	< 0.3	2018-12-14
9139175	C101	2018-12-10 @ 10:00 am	2018-12-13 @ 11:00 am	< 0.3	2018-12-14
9139182	C107	2018-12-10 @ 10:00 am	2018-12-13 @ 11:00 am	< 0.3	2018-12-14
9139181	C1071	2018-12-10 @ 10:00 am	2018-12-13 @ 11:00 am	0.6 ± 0.2	2018-12-14
9139172	C108	2018-12-10 @ 10:00 am	2018-12-13 @ 11:00 am	< 0.3	2018-12-14
9141103	C113A	2018-12-10 @ 9:00 am	2018-12-13 @ 11:00 am	0.6 ± 0.2	2018-12-14
9139198	C115	2018-12-10 @ 9:00 am	2018-12-13 @ 11:00 am	0.7 ± 0.2	2018-12-14
9139183	C120	2018-12-10 @ 10:00 am	2018-12-13 @ 11:00 am	0.7 ± 0.2	2018-12-14
9139188	C132	2018-12-10 @ 10:00 am	2018-12-13 @ 11:00 am	< 0.3	2018-12-14
9139184	C149	2018-12-10 @ 10:00 am	2018-12-13 @ 11:00 am	< 0.3	2018-12-14
9139190	C150	2018-12-10 @ 10:00 am	2018-12-13 @ 11:00 am	< 0.3	2018-12-14
9139171	C1501	2018-12-10 @ 10:00 am	2018-12-13 @ 11:00 am	< 0.3	2018-12-14
9139179	C159	2018-12-10 @ 10:00 am	2018-12-13 @ 11:00 am	< 0.3	2018-12-14
9139169	C160	2018-12-10 @ 10:00 am	2018-12-13 @ 11:00 am	0.8 ± 0.3	2018-12-14
9139154	CAFETERIA	2018-12-10 @ 8:00 am	2018-12-13 @ 11:00 am	< 0.3	2018-12-14
9141109	CON A	2018-12-10 @ 9:00 am	2018-12-13 @ 10:00 am	0.7 ± 0.2	2018-12-14
9141118	D120	2018-12-10 @ 9:00 am	2018-12-13 @ 11:00 am	1.1 ± 0.3	2018-12-14
9141111	D123	2018-12-10 @ 9:00 am	2018-12-13 @ 11:00 am	0.8 ± 0.2	2018-12-14
9139089	D124	2018-12-10 @ 9:00 am	2018-12-13 @ 11:00 am	0.9 ± 0.3	2018-12-14
9139101	D145	2018-12-10 @ 9:00 am	2018-12-13 @ 11:00 am	1.2 ± 0.3	2018-12-14
9141102	DIRECTOR OF BUILDINGS AND GROUNDS	2018-12-10 @ 9:00 am	2018-12-13 @ 11:00 am	1.1 ± 0.3	2018-12-14
9139174	DIRECTOR OF FOOD SERVICE	2018-12-10 @ 9:00 am	2018-12-13 @ 11:00 am	0.6 ± 0.2	2018-12-14
9141104	DISTRICT OFFICE C	2018-12-10 @ 9:00 am	2018-12-13 @ 11:00 am	0.5 ± 0.2	2018-12-14
9139195	DISTRICT OFFICE CR	2018-12-10 @ 9:00 am	2018-12-13 @ 12:00 pm	1.0 ± 0.2	2018-12-14
9139167	DISTRICT STORAGE	2018-12-10 @ 10:00 am	2018-12-13 @ 11:00 am	0.8 ± 0.2	2018-12-14
9139177	DISTRICT WORK ROOM	2018-12-10 @ 9:00 am	2018-12-13 @ 11:00 am	0.8 ± 0.2	2018-12-14
9139194	DOBS	2018-12-10 @ 9:00 am	2018-12-13 @ 11:00 am	< 0.3	2018-12-14
9139105	F101	2018-12-10 @ 9:00 am	2018-12-13 @ 11:00 am	2.7 ± 0.3	2018-12-14

Radon test result report for:**ST. MICHAEL-ALBERTVILLE
WEST MIDDLE SCHOOL**

Kit #	Room Id	Started	Ended	pCi/L	Analyzed
9139106	F1011	2018-12-10 @ 9:00 am	2018-12-13 @ 11:00 am	3.0 ± 0.3	2018-12-14
9139103	F102	2018-12-10 @ 9:00 am	2018-12-13 @ 11:00 am	3.1 ± 0.3	2018-12-14
9139107	F103	2018-12-10 @ 9:00 am	2018-12-13 @ 11:00 am	4.2 ± 0.4	2018-12-14
9139108	F104	2018-12-10 @ 9:00 am	2018-12-13 @ 11:00 am	1.9 ± 0.3	2018-12-14
9139114	F108	2018-12-10 @ 8:00 am	2018-12-13 @ 11:00 am	1.0 ± 0.3	2018-12-14
9139125	F109	2018-12-10 @ 8:00 am	2018-12-13 @ 11:00 am	1.2 ± 0.3	2018-12-14
9139118	F110	2018-12-10 @ 8:00 am	2018-12-13 @ 11:00 am	1.2 ± 0.3	2018-12-14
9139112	F111	2018-12-10 @ 9:00 am	2018-12-13 @ 11:00 am	1.2 ± 0.3	2018-12-14
9139104	F112	2018-12-10 @ 9:00 am	2018-12-13 @ 11:00 am	2.5 ± 0.3	2018-12-14
9139076	F113	2018-12-10 @ 8:00 am	2018-12-13 @ 11:00 am	1.3 ± 0.3	2018-12-14
9139120	F115	2018-12-10 @ 8:00 am	2018-12-13 @ 11:00 am	1.8 ± 0.3	2018-12-14
9139155	F119	2018-12-10 @ 8:00 am	2018-12-13 @ 11:00 am	1.7 ± 0.3	2018-12-14
9139117	F120	2018-12-10 @ 8:00 am	2018-12-13 @ 11:00 am	1.1 ± 0.2	2018-12-14
9139128	F121	2018-12-10 @ 8:00 am	2018-12-13 @ 11:00 am	1.0 ± 0.3	2018-12-14
9139133	F127	2018-12-10 @ 8:00 am	2018-12-13 @ 11:00 am	0.8 ± 0.2	2018-12-14
9139144	F128	2018-12-10 @ 8:00 am	2018-12-13 @ 11:00 am	1.3 ± 0.3	2018-12-14
9139116	F201	2018-12-10 @ 8:00 am	2018-12-13 @ 11:00 am	1.2 ± 0.3	2018-12-14
9139121	F202	2018-12-10 @ 8:00 am	2018-12-13 @ 11:00 am	2.2 ± 0.3	2018-12-14
9139122	F203	2018-12-10 @ 8:00 am	2018-12-13 @ 11:00 am	1.9 ± 0.3	2018-12-14
9139119	F204	2018-12-10 @ 8:00 am	2018-12-13 @ 11:00 am	1.8 ± 0.3	2018-12-14
9139123	F205	2018-12-10 @ 8:00 am	2018-12-13 @ 11:00 am	1.9 ± 0.3	2018-12-14
9139124	F206	2018-12-10 @ 8:00 am	2018-12-13 @ 11:00 am	2.1 ± 0.3	2018-12-14
9139111	F207	2018-12-10 @ 8:00 am	2018-12-13 @ 11:00 am	2.2 ± 0.3	2018-12-14
9139126	F208	2018-12-10 @ 8:00 am	2018-12-13 @ 11:00 am	2.9 ± 0.3	2018-12-14
9139164	FIELD BLANK 1	2018-12-10 @ 10:00 am	2018-12-13 @ 12:00 pm	< 0.3	2018-12-14
9139163	FIELD BLANK 2	2018-12-10 @ 10:00 am	2018-12-13 @ 12:00 pm	< 0.3	2018-12-14
9139166	FIELD BLANK 3	2018-12-10 @ 10:00 am	2018-12-13 @ 12:00 pm	< 0.3	2018-12-14
9139168	FIELD BLANK 4	2018-12-10 @ 10:00 am	2018-12-13 @ 12:00 pm	< 0.3	2018-12-14
9139165	FIELD BLANK 5	2018-12-10 @ 10:00 am	2018-12-13 @ 12:00 pm	< 0.3	2018-12-14
9139180	FINANCIAL C,	2018-12-10 @ 9:00 am	2018-12-13 @ 11:00 am	0.5 ± 0.2	2018-12-14
9139189	FOOD SERVICES C	2018-12-10 @ 9:00 am	2018-12-13 @ 11:00 am	0.6 ± 0.2	2018-12-14
9139102	G103	2018-12-10 @ 9:00 am	2018-12-13 @ 11:00 am	0.9 ± 0.3	2018-12-14
9139113	G108	2018-12-10 @ 9:00 am	2018-12-13 @ 11:00 am	1.2 ± 0.2	2018-12-14
9139115	G109	2018-12-10 @ 9:00 am	2018-12-13 @ 11:00 am	1.0 ± 0.3	2018-12-14
9139109	G110	2018-12-10 @ 9:00 am	2018-12-13 @ 11:00 am	0.9 ± 0.2	2018-12-14
9139110	G111	2018-12-10 @ 9:00 am	2018-12-13 @ 11:00 am	0.7 ± 0.2	2018-12-14
9139127	G117	2018-12-10 @ 8:00 am	2018-12-13 @ 11:00 am	0.8 ± 0.3	2018-12-14

Radon test result report for:**ST. MICHAEL-ALBERTVILLE
WEST MIDDLE SCHOOL**

Kit #	Room Id	Started	Ended	pCi/L	Analyzed
9139077	G118	2018-12-10 @ 8:00 am	2018-12-13 @ 11:00 am	0.7 ± 0.2	2018-12-14
9139137	G123	2018-12-10 @ 8:00 am	2018-12-13 @ 11:00 am	< 0.3	2018-12-14
9139135	G124	2018-12-10 @ 8:00 am	2018-12-13 @ 11:00 am	0.7 ± 0.3	2018-12-14
9139156	G125	2018-12-10 @ 8:00 am	2018-12-13 @ 11:00 am	0.7 ± 0.2	2018-12-14
9139134	G127	2018-12-10 @ 8:00 am	2018-12-13 @ 11:00 am	1.2 ± 0.2	2018-12-14
9139146	G128	2018-12-10 @ 8:00 am	2018-12-13 @ 11:00 am	1.5 ± 0.3	2018-12-14
9139132	G129	2018-12-10 @ 8:00 am	2018-12-13 @ 11:00 am	1.6 ± 0.3	2018-12-14
9139129	G130	2018-12-10 @ 8:00 am	2018-12-13 @ 11:00 am	1.9 ± 0.3	2018-12-14
9139145	G131	2018-12-10 @ 8:00 am	2018-12-13 @ 11:00 am	1.1 ± 0.2	2018-12-14
9139130	G1311	2018-12-10 @ 8:00 am	2018-12-13 @ 11:00 am	1.0 ± 0.2	2018-12-14
9139176	GIRLS LOCKER ROOM	2018-12-10 @ 10:00 am	2018-12-13 @ 11:00 am	< 0.3	2018-12-14
9141105	GYM EAST	2018-12-10 @ 9:00 am	2018-12-13 @ 11:00 am	< 0.3	2018-12-14
9141101	GYM STORAGE WEST	2018-12-10 @ 9:00 am	2018-12-13 @ 11:00 am	< 0.3	2018-12-14
9141106	GYM WEST	2018-12-10 @ 9:00 am	2018-12-13 @ 11:00 am	< 0.3	2018-12-14
9139149	H101	2018-12-10 @ 8:00 am	2018-12-13 @ 11:00 am	0.9 ± 0.2	2018-12-14
9139148	H106	2018-12-10 @ 8:00 am	2018-12-13 @ 11:00 am	< 0.3	2018-12-14
9139150	H110	2018-12-10 @ 8:00 am	2018-12-13 @ 11:00 am	1.0 ± 0.2	2018-12-14
9139147	H111	2018-12-10 @ 8:00 am	2018-12-13 @ 11:00 am	1.2 ± 0.2	2018-12-14
9139079	H112	2018-12-10 @ 8:00 am	2018-12-13 @ 11:00 am	1.1 ± 0.3	2018-12-14
9139139	H113	2018-12-10 @ 8:00 am	2018-12-13 @ 11:00 am	1.4 ± 0.2	2018-12-14
9139085	H120	2018-12-10 @ 8:00 am	2018-12-13 @ 11:00 am	1.1 ± 0.2	2018-12-14
9139142	H121	2018-12-10 @ 8:00 am	2018-12-13 @ 11:00 am	1.0 ± 0.3	2018-12-14
9139140	H123	2018-12-10 @ 8:00 am	2018-12-13 @ 11:00 am	1.1 ± 0.2	2018-12-14
9139136	H124	2018-12-10 @ 8:00 am	2018-12-13 @ 11:00 am	1.5 ± 0.3	2018-12-14
9139138	H125	2018-12-10 @ 8:00 am	2018-12-13 @ 11:00 am	2.0 ± 0.3	2018-12-14
9139131	H126	2018-12-10 @ 8:00 am	2018-12-13 @ 11:00 am	2.3 ± 0.3	2018-12-14
9139159	H201	2018-12-10 @ 8:00 am	2018-12-13 @ 11:00 am	1.3 ± 0.3	2018-12-14
9139141	H202	2018-12-10 @ 8:00 am	2018-12-13 @ 11:00 am	1.6 ± 0.3	2018-12-14
9139160	H204	2018-12-10 @ 8:00 am	2018-12-13 @ 11:00 am	2.2 ± 0.3	2018-12-14
9139078	H205	2018-12-10 @ 8:00 am	2018-12-13 @ 11:00 am	2.3 ± 0.3	2018-12-14
9139081	H206	2018-12-10 @ 8:00 am	2018-12-13 @ 11:00 am	2.6 ± 0.3	2018-12-14
9139080	H207	2018-12-10 @ 8:00 am	2018-12-13 @ 11:00 am	2.0 ± 0.3	2018-12-14
9139086	H208	2018-12-10 @ 8:00 am	2018-12-13 @ 11:00 am	2.0 ± 0.3	2018-12-14
9139083	H2081	2018-12-10 @ 8:00 am	2018-12-13 @ 11:00 am	2.2 ± 0.3	2018-12-14
9139152	KITCHEN	2018-12-10 @ 8:00 am	2018-12-13 @ 11:00 am	0.6 ± 0.2	2018-12-14
9139157	KITCHEN OFFICE	2018-12-10 @ 8:00 am	2018-12-13 @ 11:00 am	0.6 ± 0.2	2018-12-14
9139151	LECTURE HALL	2018-12-10 @ 8:00 am	2018-12-13 @ 12:00 pm	0.9 ± 0.2	2018-12-14

Radon test result report for:**ST. MICHAEL-ALBERTVILLE
WEST MIDDLE SCHOOL**

Kit #	Room Id	Started	Ended	pCi/L	Analyzed
9139153	LECTURE HALL 1	2018-12-10 @ 8:00 am	2018-12-13 @ 12:00 pm	1.2 ± 0.2	2018-12-14
9139162	LOADING DOCK	2018-12-10 @ 10:00 am	2018-12-13 @ 11:00 am	< 0.3	2018-12-14
9141117	M-Z OFFICE	2018-12-10 @ 9:00 am	2018-12-13 @ 11:00 am	1.2 ± 0.3	2018-12-14
9139187	MAIN HALL	2018-12-10 @ 10:00 am	2018-12-13 @ 11:00 am	0.6 ± 0.2	2018-12-14
9139197	MAIN OFFICE	2018-12-10 @ 9:00 am	2018-12-13 @ 10:00 am	0.6 ± 0.2	2018-12-14
9139090	MEDIA CENTER	2018-12-10 @ 9:00 am	2018-12-13 @ 11:00 am	0.6 ± 0.2	2018-12-14
9139087	MEDIA CENTER OFFICE	2018-12-10 @ 9:00 am	2018-12-13 @ 11:00 am	0.6 ± 0.2	2018-12-14
9139088	MEDIA CENTER OFFICE 1	2018-12-10 @ 9:00 am	2018-12-13 @ 11:00 am	< 0.3	2018-12-14
9141113	MEDIA STORAGE	2018-12-10 @ 9:00 am	2018-12-13 @ 11:00 am	0.8 ± 0.3	2018-12-14
9139200	NURSE	2018-12-10 @ 9:00 am	2018-12-13 @ 11:00 am	0.6 ± 0.2	2018-12-14
9139199	NURSE1	2018-12-10 @ 9:00 am	2018-12-13 @ 11:00 am	0.5 ± 0.2	2018-12-14
9141108	OFFICE A	2018-12-10 @ 9:00 am	2018-12-13 @ 10:00 am	1.2 ± 0.2	2018-12-14
9141110	OFFICE A1	2018-12-10 @ 9:00 am	2018-12-13 @ 10:00 am	1.2 ± 0.3	2018-12-14
9141107	OFFICE C	2018-12-10 @ 9:00 am	2018-12-13 @ 11:00 am	1.6 ± 0.3	2018-12-14
9141121	OFFICE D	2018-12-10 @ 9:00 am	2018-12-13 @ 11:00 am	1.6 ± 0.3	2018-12-14
9141116	PRINCIPAL	2018-12-10 @ 9:00 am	2018-12-13 @ 10:00 am	0.6 ± 0.2	2018-12-14
9141120	PRINCIPAL SECRETARY	2018-12-10 @ 9:00 am	2018-12-13 @ 10:00 am	0.7 ± 0.2	2018-12-14
9139192	RESOURCES OFFICER	2018-12-10 @ 9:00 am	2018-12-13 @ 10:00 am	0.8 ± 0.2	2018-12-14
9141119	SOCIAL WORKER'S OFFICE	2018-12-10 @ 9:00 am	2018-12-13 @ 11:00 am	0.6 ± 0.2	2018-12-14
9139196	SPECIAL SERVICES	2018-12-10 @ 9:00 am	2018-12-13 @ 11:00 am	0.6 ± 0.2	2018-12-14
9141114	STUDIO	2018-12-10 @ 9:00 am	2018-12-13 @ 11:00 am	0.6 ± 0.2	2018-12-14
9139193	SUPER OFFICE	2018-12-10 @ 9:00 am	2018-12-13 @ 11:00 am	0.9 ± 0.2	2018-12-14
9139170	WEIGHT ROOM	2018-12-10 @ 10:00 am	2018-12-13 @ 11:00 am	< 0.3	2018-12-14
9141115	WORK ROOM	2018-12-10 @ 9:00 am	2018-12-13 @ 10:00 am	0.8 ± 0.2	2018-12-14

LEGEND

 RADON DETECTOR



LEGEND

● RADON DETECTOR



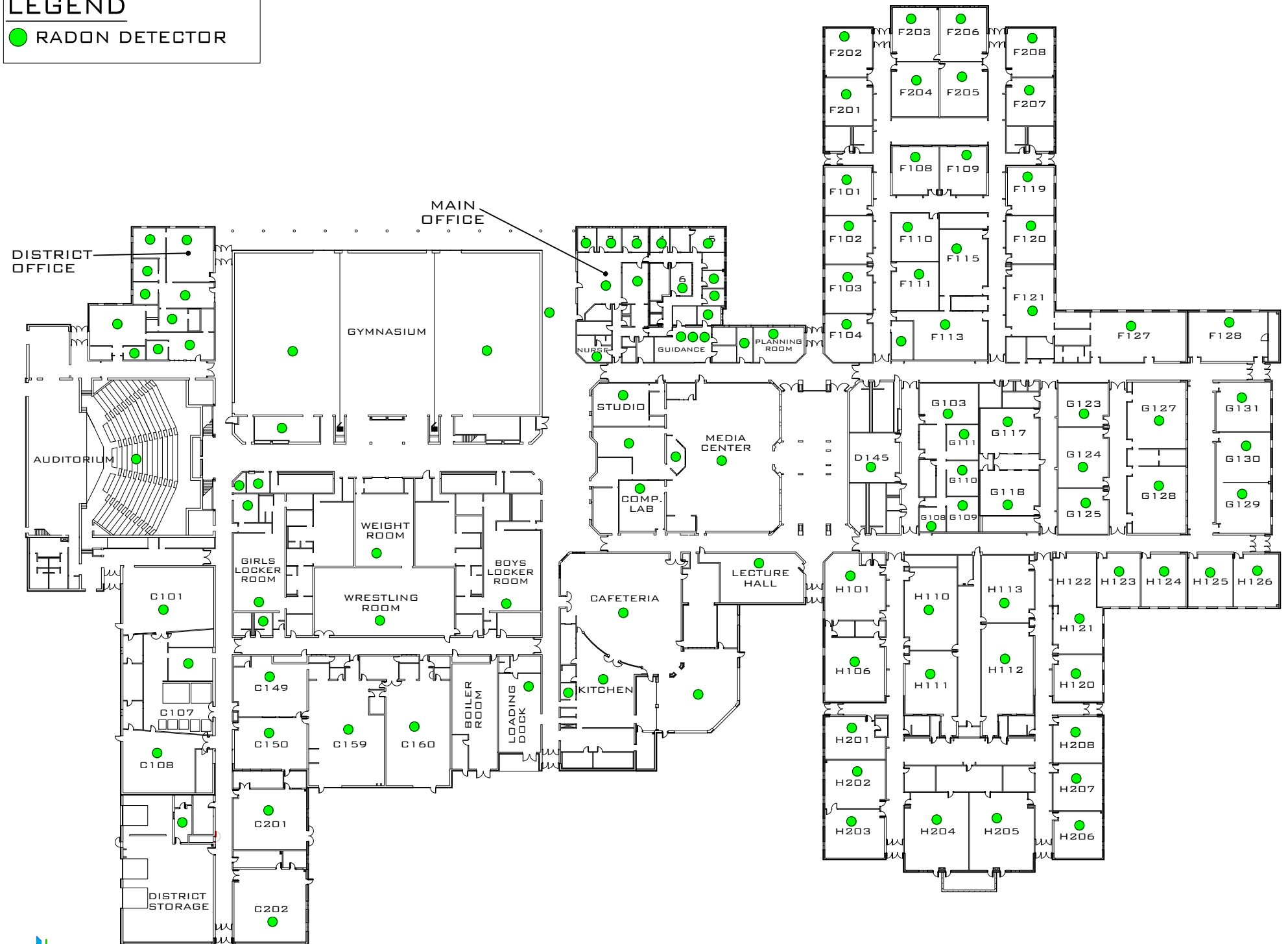
LEGEND

● RADON DETECTOR



LEGEND

 RADON DETECTOR



Chain-of-Custody Cover Page



IEA, Inc.
9201 West Broadway, Suite 600
Brooklyn Park, MN 55445
763-315-7900

Device Type (circle) Radtrak² Air Chek Pro Chek CRM

Project Number 201011104

District: St. Michael Albertville

Building: Big Woods Elementary
Address: 13470 Frankfort Pkwy NE St
 St. Michael, MN

Project Manager: Daniel Holcomb

Date Disbursed: 12/10/10

Time: all day

Disbursing
Measurement
Professional Name:

Chad Whayla

Signature:

Ch Whayla

Date Retrieved:

12/13/10

Time Retrieved:

all day

Retrieving
Measurement
Professional Name:

Chad Whayla

Signature:

Ch Whayla

Date sent to Analytical
Lab:

12/13/10

Time:

4:00 pm

Tracking Number:

Date Lab
Received:
Received
by:

Chain-of-Custody Cover Page



IEA, Inc.
9201 West Broadway, Suite 600
Brooklyn Park, MN 55445
763-315-7900

Device Type (circle) Radtrak² Air Chex Pro Chex CRM

Project Number 201811184

District: St. Michael Albertville

Building: Albertville Primary
Address: 5386 main Ave NE
 Albertville, MN

Project Manager: Daniel Holcomb

Date Disbursed: 12/10/18

Time: all day

Disbursing
Measurement
Professional Name:

Chad Whayla

Signature:

[Signature]

Date Retrieved:

12/13/18

Time Retrieved:

all day

Retrieving
Measurement
Professional Name:

Chad Whayla

Signature:

[Signature]

Date sent to Analytical
Lab:

12/13/18

Time:

4:00 PM

Tracking Number:

Date Lab
Received:
Received
by:

Chain-of-Custody Cover Page



IEA, Inc.
9201 West Broadway, Suite 600
Brooklyn Park, MN 55445
763-315-7900

Device Type (circle)

Radtrak²

Air Chek

Pro Chek

CRM

Project Number

20181118Y

District:

St. Michael Albertville

Building: STMA middle school west
Address: 11343 50th St NE
Albertville, MN

Project Manager:

Daniel Holcomb

Date Disbursed:

12/10/18

Time: all day

Disbursing
Measurement

Professional Name:

Chad Whayla

Signature:

[Signature]

Date Retrieved:

12/13/18

Time Retrieved:

all day

Retrieving
Measurement

Professional Name:

Chad Whayla

Signature:

[Signature]

Date sent to Analytical
Lab:

12/13/18

Time:

4:00 PM

Tracking Number:

Date Lab

Received:

Received

by:

Chain-of-Custody Cover Page



IEA, Inc.
9201 West Broadway, Suite 600
Brooklyn Park, MN 55445
763-315-7900

Device Type (circle) Radtrak² Air Chek Pro Chek CRM

Project Number 201811184

District: St. Michael Albertville Building: St. Michael Middle School East
Address: 4862 Vaber Avenue,
St. Michael MN

Project Manager: Daniel Holcomb

Date Disbursed: 12/10/18 Time: all day

Disbursing
Measurement
Professional Name: Chad Whayler Signature: Ch Wh

Date Retrieved: 12/13/18 Time Retrieved: all day

Retrieving
Measurement
Professional Name: Chad Whayler Signature: Ch Wh

Date sent to Analytical
Lab: 12/13/18 Time: 4:00 PM

Tracking Number: _____ Date Lab
Received: _____
Received
by: _____

Appendix C

MDH Reporting Forms

School Radon Testing Reporting Form

According to Minnesota Statute 123B.571 subd. 3, a school district that has tested its school buildings for the presence of radon shall report the results of its tests to the Department of Health. Please use this form to submit information about the most recent round or cycle of testing conducted for each building.

Instructions

1. Complete one form for each building tested. In this case, a building is defined as an occupied facility with a unique address. This includes administrative buildings.
2. Include this form, raw data (e.g. laboratory report) and a building map.
3. Submit this form when all work is completed for a round of testing. This includes reporting to the school board, and follow-up testing and post-mitigation testing, if applicable.
4. Email information to health.indoorair@state.mn.us.

Contact Information

Name:	
Mailing Address:	
Phone:	Email:

Initial Radon Testing Information

School Building Name:	
School District & District Number:	
Building Address:	
Test Kit Manufacturer:	Device Name:
Date of Kit Retrieval (DD/MM/YY):	Length of Test (days):
How many rooms were tested?	
Does the test period include weekends? <input type="checkbox"/> Yes <input type="checkbox"/> No	
Does the test period include school breaks or holidays? <input type="checkbox"/> Yes <input type="checkbox"/> No	

SCHOOL RADON TESTING REPORTING FORM

<p>Were all frequently-occupied ground contact rooms tested?¹ <input type="checkbox"/> Yes <input type="checkbox"/> No</p> <p style="margin-left: 40px;">If no, did you attempt to test all frequently occupied ground contact rooms, meaning test kits were placed in all these rooms? <input type="checkbox"/> Yes <input type="checkbox"/> No</p>
<p>How many rooms had results ≥ 4 pCi/L?:</p>
<p>Were the results reported at a school board meeting? <input type="checkbox"/> Yes <input type="checkbox"/> No</p>

Follow-up Testing, Mitigation, & Post-Mitigation Testing

If one or more rooms tested ≥ 4 pCi/L, please answer the questions below:

<p>How many rooms had follow-up testing?:</p>		
<p>Number of rooms with follow-up results</p>	<p>≥ 4 pCi/L:</p>	<p>< 4 pCi/L:</p>
<p>Of the rooms that had test results ≥ 4 pCi/L, how many rooms were:</p>		
<p>mitigated by HVAC balancing or operational changes? :</p>		
<p>mitigated by installation of active soil depressurization?:</p>		
<p>addressed through other corrective measures?²:</p>		
<p>What was the cost of the installation and/or HVAC service work, to mitigate radon? \$</p>		
<p>What is the known or anticipated annual operating cost of mitigation (estimate)? \$</p>		
<p>After radon mitigation, how many rooms were retested?:</p>		
<p>Post mitigation results (# of rooms)</p>	<p>≥ 4 pCi/L:</p>	<p>< 4 pCi/L:</p>

¹ This includes classrooms, offices, break rooms, laboratories, cafeterias, libraries, auditoriums, gymnasiums, etc. It includes rooms on grade and rooms above unoccupied spaces that are in contact with the ground, such as rooms above storage rooms, crawl spaces, tunnels, and boiler rooms. If only a sample or portion of rooms were tested, then respond with 'no'.

² 'Other corrective measures' could include moving staff out of a room and making a room unoccupied or trying to seal radon entry points.

School Radon Testing Reporting Form

According to Minnesota Statute 123B.571 subd. 3, a school district that has tested its school buildings for the presence of radon shall report the results of its tests to the Department of Health. Please use this form to submit information about the most recent round or cycle of testing conducted for each building.

Instructions

1. Complete one form for each building tested. In this case, a building is defined as an occupied facility with a unique address. This includes administrative buildings.
2. Include this form, raw data (e.g. laboratory report) and a building map.
3. Submit this form when all work is completed for a round of testing. This includes reporting to the school board, and follow-up testing and post-mitigation testing, if applicable.
4. Email information to health.indoorair@state.mn.us.

Contact Information

Name:	
Mailing Address:	
Phone:	Email:

Initial Radon Testing Information

School Building Name:	
School District & District Number:	
Building Address:	
Test Kit Manufacturer:	Device Name:
Date of Kit Retrieval (DD/MM/YY):	Length of Test (days):
How many rooms were tested?	
Does the test period include weekends? <input type="checkbox"/> Yes <input type="checkbox"/> No	
Does the test period include school breaks or holidays? <input type="checkbox"/> Yes <input type="checkbox"/> No	

SCHOOL RADON TESTING REPORTING FORM

<p>Were all frequently-occupied ground contact rooms tested?¹ <input type="checkbox"/> Yes <input type="checkbox"/> No</p> <p style="padding-left: 40px;">If no, did you attempt to test all frequently occupied ground contact rooms, meaning test kits were placed in all these rooms? <input type="checkbox"/> Yes <input type="checkbox"/> No</p>
<p>How many rooms had results ≥ 4 pCi/L?:</p>
<p>Were the results reported at a school board meeting? <input type="checkbox"/> Yes <input type="checkbox"/> No</p>

Follow-up Testing, Mitigation, & Post-Mitigation Testing

If one or more rooms tested ≥ 4 pCi/L, please answer the questions below:

<p>How many rooms had follow-up testing?:</p>		
<p>Number of rooms with follow-up results</p>	<p>≥ 4 pCi/L:</p>	<p>< 4 pCi/L:</p>
<p>Of the rooms that had test results ≥ 4 pCi/L, how many rooms were:</p>		
<p>mitigated by HVAC balancing or operational changes? :</p>		
<p>mitigated by installation of active soil depressurization?:</p>		
<p>addressed through other corrective measures?²:</p>		
<p>What was the cost of the installation and/or HVAC service work, to mitigate radon? \$</p>		
<p>What is the known or anticipated annual operating cost of mitigation (estimate)? \$</p>		
<p>After radon mitigation, how many rooms were retested?:</p>		
<p>Post mitigation results (# of rooms)</p>	<p>≥ 4 pCi/L:</p>	<p>< 4 pCi/L:</p>

¹ This includes classrooms, offices, break rooms, laboratories, cafeterias, libraries, auditoriums, gymnasiums, etc. It includes rooms on grade and rooms above unoccupied spaces that are in contact with the ground, such as rooms above storage rooms, crawl spaces, tunnels, and boiler rooms. If only a sample or portion of rooms were tested, then respond with 'no'.

² 'Other corrective measures' could include moving staff out of a room and making a room unoccupied or trying to seal radon entry points.

School Radon Testing Reporting Form

According to Minnesota Statute 123B.571 subd. 3, a school district that has tested its school buildings for the presence of radon shall report the results of its tests to the Department of Health. Please use this form to submit information about the most recent round or cycle of testing conducted for each building.

Instructions

1. Complete one form for each building tested. In this case, a building is defined as an occupied facility with a unique address. This includes administrative buildings.
2. Include this form, raw data (e.g. laboratory report) and a building map.
3. Submit this form when all work is completed for a round of testing. This includes reporting to the school board, and follow-up testing and post-mitigation testing, if applicable.
4. Email information to health.indoorair@state.mn.us.

Contact Information

Name:	
Mailing Address:	
Phone:	Email:

Initial Radon Testing Information

School Building Name:	
School District & District Number:	
Building Address:	
Test Kit Manufacturer:	Device Name:
Date of Kit Retrieval (DD/MM/YY):	Length of Test (days):
How many rooms were tested?	
Does the test period include weekends? <input type="checkbox"/> Yes <input type="checkbox"/> No	
Does the test period include school breaks or holidays? <input type="checkbox"/> Yes <input type="checkbox"/> No	

SCHOOL RADON TESTING REPORTING FORM

<p>Were all frequently-occupied ground contact rooms tested?¹ <input type="checkbox"/> Yes <input type="checkbox"/> No</p> <p style="margin-left: 40px;">If no, did you attempt to test all frequently occupied ground contact rooms, meaning test kits were placed in all these rooms? <input type="checkbox"/> Yes <input type="checkbox"/> No</p>
<p>How many rooms had results ≥ 4 pCi/L?:</p>
<p>Were the results reported at a school board meeting? <input type="checkbox"/> Yes <input type="checkbox"/> No</p>

Follow-up Testing, Mitigation, & Post-Mitigation Testing

If one or more rooms tested ≥ 4 pCi/L, please answer the questions below:

<p>How many rooms had follow-up testing?:</p>		
<p>Number of rooms with follow-up results</p>	<p>≥ 4 pCi/L:</p>	<p>< 4 pCi/L:</p>
<p>Of the rooms that had test results ≥ 4 pCi/L, how many rooms were:</p>		
<p>mitigated by HVAC balancing or operational changes? :</p>		
<p>mitigated by installation of active soil depressurization?:</p>		
<p>addressed through other corrective measures?²:</p>		
<p>What was the cost of the installation and/or HVAC service work, to mitigate radon? \$</p>		
<p>What is the known or anticipated annual operating cost of mitigation (estimate)? \$</p>		
<p>After radon mitigation, how many rooms were retested?:</p>		
<p>Post mitigation results (# of rooms)</p>	<p>≥ 4 pCi/L:</p>	<p>< 4 pCi/L:</p>

¹ This includes classrooms, offices, break rooms, laboratories, cafeterias, libraries, auditoriums, gymnasiums, etc. It includes rooms on grade and rooms above unoccupied spaces that are in contact with the ground, such as rooms above storage rooms, crawl spaces, tunnels, and boiler rooms. If only a sample or portion of rooms were tested, then respond with 'no'.

² 'Other corrective measures' could include moving staff out of a room and making a room unoccupied or trying to seal radon entry points.