

# MCI ALUMNUS

---

VOLUME XIII; NUMBER 1

MAY, 1962

PITTSFIELD, MAINE

---



A "NEW LOOK" at the MCI campus is this delightful winter scene by school photographer Peter Bradshaw, who is also chairman of the social studies faculty. Taken from the "west campus," the new boys' dormitory-cafeteria is on the left with the Powell Memorial Library shown on the right. The Institute Building tower is illuminated directly above the dormitory-cafeteria, with portion of Weymouth Hall between the two new buildings.

Published by

THE ALUMNI ASSOCIATION OF MAINE CENTRAL INSTITUTE IN THE  
INTEREST OF THE SCHOOL AND ITS FORMER STUDENTS

MAINE CENTRAL INSTITUTE

*Founded 1866*

PITTSFIELD, MAINE

OFFICE OF THE PRINCIPAL

May, 1962

Dear MCI Alumni:

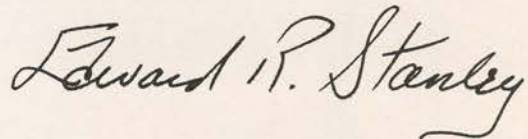
Once again it is pleasant to be permitted to send greetings from the campus to those who, through their attendance and their subsequent loyalty to the school over widely varying periods of time, are the School's best friends. This year, as in previous years, the news from the campus is largely good news. We opened our doors in September to 568 boys and girls, assuring the thirty-nine faculty members of a busy year. Our facilities have proved adequate to the demands of our expanding program, while our curriculum is annually subjected to scrutiny and such revision as may be indicated to assure we are meeting the educational challenge of our times.

Alumni support continues to play a role of real importance at MCI. This support is manifested in many ways, all important. Some help their school through the medium of the annual Alumni Fund, which has made it possible for the School to face the tremendous costs of educational development at MCI with greater confidence. Others have given MCI yeoman service as ambassadors from the School to the homes of those seeking aid in locating an appropriate preparatory program for their sons; it would be difficult indeed to measure in dollars and cents the value of their contributions to MCI, but I can assure you it is substantial. Still others have been no less helpful through assisting us in maintaining a healthy public image, without which no private secondary school would long survive.

On the first Saturday in August I hope to have an opportunity to thank many of you in person for all you have done for MCI. Most of all, I hope to see you here on that day which is set aside especially to make it possible for old friends to renew, if only briefly, acquaintances never forgotten and to re-live experiences fondly remembered.

With all best wishes,

Sincerely yours,



Edward R. Stanley  
Principal

ERS:bsh



# A Memorial Gift to MCI

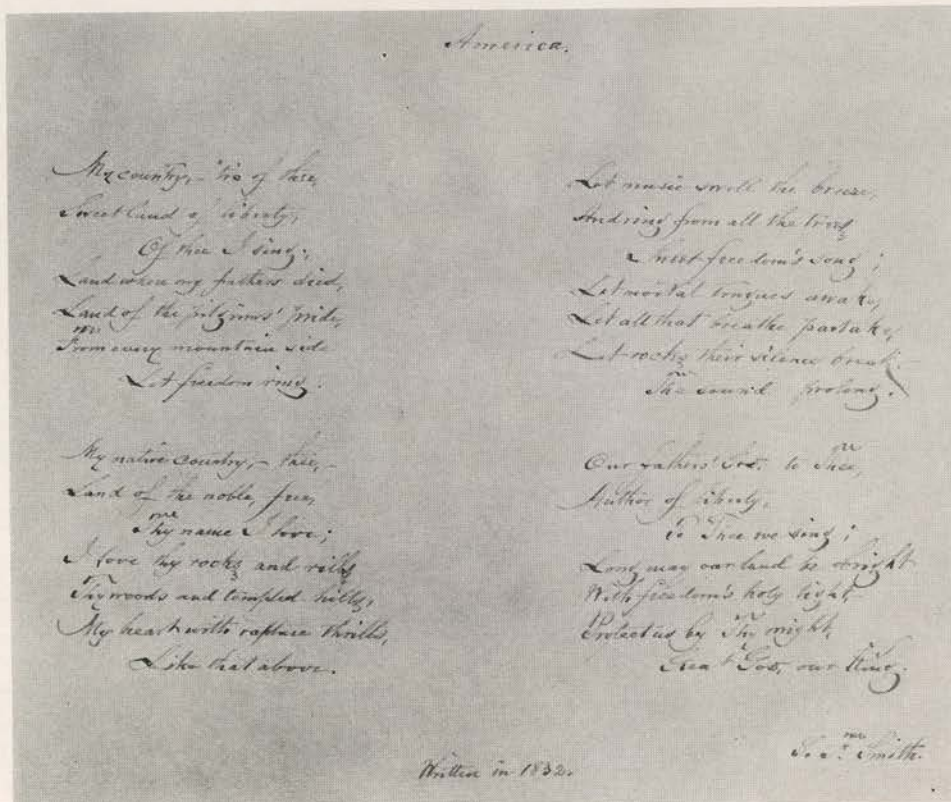


In memory of his wife, Ruth Plummer Cook, Sanger M. Cook '17, trustee and longtime friend of MCI, has presented to the school a rare and authenticated holographic copy of "America," by S. F. Smith, the famed pastor-poet.

"My country, — 'tis of thee . . .," words as familiar as any in our American heritage, were penned in 1832 by Dr. Smith, who in 1834 became a resident of Waterville, Maine, and shortly after a professor at Waterville College, later named Colby College.

Mr. Cook several years ago found this treasured manuscript in a Boston book store. Now, through his interest in the School that has meant so much to Mrs. Cook and himself, it may be seen on display at the Powell Memorial Library.

Trustee of MCI and former faculty member, Sanger M. Cook, presents rare authenticated copy of "America" in the handwriting of the author, to Principal Edward R. Stanley. The valuable gift was made to MCI in memory of Ruth Plummer Cook.



The accompanying close-up shows the manuscript in its detail.





## *An Important Moment . . .*

An important moment in the history of MCI's expansion and development was marked with the signing of a note for \$200,000 in October for the new boys' dormitory-cafeteria. At the offices of the Union Mutual Life Insurance Co. in Portland, Dr. Harry W. Rowe, President of the Board of Trustees for Maine Central Institute, Colin

C. Hampton of Union Mutual, Earle N. Vickery, Secretary-Treasurer for the Board of Trustees, and Principal Edward R. Stanley completed arrangements for the transaction. Half of the loan came directly from Union Mutual, with the remaining \$100,000 divided between three Maine banks.

It is a primary aim of the MCI Development Fund to help reduce the

indebtedness incurred by this major loan. Obviously, the sooner this outstanding obligation is substantially reduced or finally discharged, the sooner MCI can embark on new programs so vitally needed to serve its expanding school population. The Alumni Association is pledged to help finance this solid investment in MCI's future.

## *100th Anniversary, 1966*

In just four short years, MCI will mark its 100th birthday. On February 1 of the year 1866, a bill to incorporate the Trustees of Maine Central Institute was presented to the Maine "Senate and House of Representatives in Legislature assembled," and on February 13, less than two weeks later, the first meeting of the Trustees was held at the office of Going Hathorn of Pittsfield to act upon acceptance of the charter. Olin B. Cheney was elected to serve as President of the Board of Trustees; MCI was formally launched.

In preparation for MCI's Centennial, the Alumni Office is attempting to assemble and arrange memorabilia of the School's early days. While our display in the Powell Memorial Library has attracted considerable attention, it still needs old programs, pictures, and news clippings to present a complete picture.

Several Alumni and friends have contributed generously from their own

archives, including Dr. Harry W. Rowe '06, Sanger M. Cook '17, Francis Smiley '21, Bertha Wheeler Carter '17, Mrs. John Furbush, Miss Esther G. Pratt, Hazel Copeland French '14, and too many others to be listed at this time. All pictures and documents received have been carefully marked with the name of the donor and have been either placed on display or in a newly purchased cabinet for storage.

Items particularly needed for our project include: pictures of Weymouth Hall under construction, apparently very hard to find; catalogues for 1891, 1895, 1899 (our list is otherwise complete); the "Trumpet" for years prior to 1930; old "MCI's" and early printings of the "Talisman"; pictures of early debating societies, social groups, sports groups and musicians.

Bear us in mind when cleaning that old attic! If what you find wears an MCI label, send it to us. We promise a safe home.



## *'55 Graduate Tracks Colonel Glenn*

To Francis Bowen '55 goes the remarkable distinction of being the first person on the Bermuda base of Project Mercury to hear the voice of Marine Lt. Colonel John H. Glenn, during the epochal flight of the Friendship 7 space capsule. A communications engineer at the Bermuda site, Bowen, since June

*Continued on Page 11*



# SECRETARY'S REPORT

## OF ANNUAL MEETING, 1961

The mid-summer homecoming day of Maine Central Institute took place on the campus with an estimated crowd of 500 alumni and friends in attendance. At 3:00 P.M. Dr. Harry W. Rowe, president of the Board of Trustees, presided at the dedication ceremony of the Parks Memorial Physics Laboratory. At this time a plaque was unveiled in honor of the late George M. Parks '85, a former trustee and benefactor of the school. Mrs. Winthrop Winslow of Coventry, R. I., represented Mr. and Mrs. Johnson Parks of Waterville, who provided the furnishings of the Laboratory in memory of their uncle. Mrs. Winslow, a cousin of the Parks, is a member of the Board of Trustees. An inspection of the newly purchased Bryant House and the nearly completed boys' dormitory-cafeteria was carried on throughout the afternoon.

An informal reception in honor of the class of 1911 was held during the afternoon under the trees on the campus lawn. Mrs. Edward R. Stanley acted as hostess to the affair, assisted by Mrs. Joseph R. Cianchette, Mrs. Dana Sweet, Mrs. George Webber, Mrs. Harold Goodwin, and Mrs. Roderic Smith.

Two other class reunion parties were held on Saturday afternoon also. Ruth Trickey Parker '36 was hostess at her home to about 20 members and guests of her class. She was assisted by Marie Dodge Joy of Falmouth and Constance Griffin Gould of town.

At the home of Sally Cianchette Dwinell the class of 1951 was entertained. Assisting hostesses of this reunion were Beverly Sennett Berry and Beatrice Newhouse Billings. About 27 were in attendance here.

At 6:30 the Alumni Banquet was held at Parks Gymnasium with Burton Hammond '41 presiding. The invocation was given by Dr. Earle Harding '11 of Wilmington, Delaware. A roll call of classes was given. Two members, Mertie Hanson Palmer '96 of Pittsfield and Maude Brackett Hyde

'92 of Brookline, Mass. represented early classes. A letter was read from Mrs. Gilley '09, of Southwest Harbor. Other speakers of the evening included Dr. Harding from the class of 1911, Principal Edward R. Stanley, Dana W. Sweet, executive Alumni Secretary, and Dr. Harry W. Rowe.

The nominating committee presented the 1962 slate of officers as follows:

President—Guy Susi '35

Vice President—Laurice Gould '36

Secretary—Eleanor Toothaker '30

Treasurer—Alma Patten '09

Executive Board:

Wallace Percival '20

Helen Cowan Burch '30

Nominating Committee:

William Daily '45

Joyce Jackson Daily '49

Maxine Field Schissler '49

Music for the evening was provided by Mrs. Ruth Plummer Cook on the chimes and Dr. Robert Parker on the Long Memorial Organ.

Following the business meeting a dance was held at the Lancey House.

Respectfully submitted

Eleanor A. Toothaker, Sec.



Members of the Golden Anniversary Class of 1911 gathered around the punch bowl for the traditional cutting of the 50th Anniversary Cake at the afternoon reception during the 1961 Annual Homecoming. Shown above, from the left, are Earle A. Harding of Wilmington, Del., Mildred Bartlett Walker of Elliot, Fern Hoxie Webendorfer of Pittsfield, Norman Willis of Harmony, Helen Philbrick Ward of Thorndike, Florence Blaisdell Sweet of East Holden, Nina Cunningham Goodwin of Lincoln, Ruth Runnals Lyon of Augusta, and Leon W. Haines of Yarmouth. Shown at right is Mrs. J. R. Cianchette of Pittsfield, who assisted in serving.

## Plan Now for '62 Homecoming

Early this summer, each of you will receive more detailed plans regarding the 12th Annual Mid-Summer Alumni Homecoming, to be held this year on Saturday, August 4. But now is the time to start your plans—to save a weekend to be with your old MCI friends. To make absolutely certain that you will meet your particular favorites, why not get in touch with those old classmates and make it a date to be remembered? Will the day or the weekend be enjoyed? It's more or less up to you. But, a point to consider: last summer more than 500 Alumni, friends and families of Alumni

renewed old acquaintances, trod the old corridors, visited the new facilities, and in general had a grand old time!

It will be a reunion year for the "2" and "7" classes, with special honors for the golden anniversary class of 1912. And although these classes will get top billing, it's still a reunion year for all Alumni who wish to revisit the campus, perhaps to recapture old and half-forgotten experiences, perhaps to renew memories and old friendships.

In a few short weeks, your Alumni Office will be extending more than 3600 invitations to attend this 12th Homecoming. Plan now to accept!



**RUTH  
PLUMMER  
COOK**



Ruth Plummer Cook, a member of the faculty at Maine Central Institute since 1923, died at her home in Pittsfield on December 5, 1961, following a long illness. With her death, MCI lost not only its senior faculty member but one of its most loyal, dependable friends. Director of music at MCI from 1923 until 1947, she continued to serve the school and its students as instructor in piano until very few weeks before her death.

Mrs. Cook, a graduate of Newport High School and the New England Conservatory of Music, studied cello under the direction of Carl Webster, a noted musician. She was widely recognized throughout the state as a fine cellist and was for years a member of the Bangor Symphony Orchestra and the Colby-Community Symphony Orchestra.

Music was the great love of Ruth Cook's life, and she gave of herself generously in the furthering of musical programs in her school, her church, and her town. She was for thirty-six years organist at the First Baptist Church in Pittsfield, and only a year before her death organized a junior choir in that church. Hundreds of MCI alumni will remember her devotion to the MCI Orchestra and choral groups. In an age when dedicated teachers are the more appreciated because of their rarity, Ruth Cook merited and received the finest professional compliment: "She was a teacher."

Mrs. Cook is survived by her husband, Sanger M. Cook '17, himself a former MCI master and present member of the Board of Trustees; by her mother, Mrs. Alice Plummer of Newport; and by several cousins. The sympathy of the alumni, the faculty, and the student body is extended to her family.



## Bowdoin Honors Frederick W. Willey

On June 10, 1961, Frederick W. Willey, MCI '13, was presented with the Bowdoin College Alumni Association's highest honor, the Alumni Service Award, at the annual Bowdoin College Commencement Dinner at the Hyde Athletic Building.

Fred Willey while at MCI was a member of the debating team, a Manson Essay finalist, and an Honor Essayist at his class graduation. The honors that he achieved at MCI indicated an outstanding future. May we quote his Bowdoin citation in part:



"A native of Carmel, Maine, and Vice-President and Resident Manager of the Pittsburgh office of Stroud and Company, Inc., Mr. Willey is a member of the Bond Club of Pittsburgh, the National Trader's Association, the Investment Banker's Association, the Harvard-Yale-Princeton Club, the Carnegie Institute Society, and the University Club, and is a 32nd degree Mason. He is also Past Chairman of the Western Pennsylvania Bankers' Association, Elder and Past President of the Board of Trustees of the Third United Presbyterian Church of Pittsburgh, and the author of many articles on investment banking. He served in the United States Army in 1917-18."

MCI is proud to applaud the notable achievements of Frederick W. Willey, Class of '13.



## NEW DORM FIRST WINNER OF HEAD MASTER'S AWARD PLAQUE

The first presentation of the newly established Headmaster's Award Plaque was made by Principal Edward R. Stanley to Richard J. Ackerman of Ellsworth, representing the new boys' dormitory.

The Plaque, the personal gift of Principal Stanley, will be placed in the temporary possession of that dormitory having attained the highest scholastic average for each quarter, and will be inscribed each year with the name of the dormitory having the highest average for the year.

The purpose of the plaque, now a proud adornment of the New Dorm, is to stimulate a healthy competition in scholarship among the dormitory groups. The boys from the New Dorm, obviously delighted with their prize, have already indicated to Weymouth and Alumni Halls that they intend to hold the plaque in more than temporary possession.

## New Faces . . .



New faculty faces this year at MCI include (seated, left to right) David A. Mosher '57 of Benton, U. of M. graduate, instructor in math; Mrs. George F. Webber (Betty Knight '39) of Pittsfield, U. of M. graduate, instructor in home economics; Gerald E. Richards of Auburn, graduate of Auburn, Maine, School of Commerce, instructor in commercial subjects; (standing, left to right) Robert Boulrisse of St. Johnsbury, Vt., a graduate of Lyndon State Teachers' College, instructor in math; Dana W. Fields '55 of Palmyra, U. of M. graduate, instructor in English; John A. Frost of Brunswick, graduate of Bowdoin, instructor in biology. Not present at the time of this photograph were the Rev. Harley Bye of Pittsfield, graduate of the Eastern Nazarene College, instructor in English and French; N. Blake Bartlett of Pittsfield, U. of M. graduate, instructor in reading techniques; Werner H. Beyer, graduate of McGill University, instructor in math and German.



# ALUMNI MOURN LOSS OF THREE LEADERS: OLDEST GRADUATE, NOTED JURIST, BELOVED DOCTOR

MCI has lost three of its most loyal and distinguished graduates through the deaths during the past year of the Reverend Roscoe Nelson, Justice Herbert Thompson Powers, and Dr. Everett C. Higgins. If a school is to be judged by the calibre of its sons, MCI has been truly served by these outstanding men.

The Reverend Roscoe Nelson, who was 100 years old on Oct. 22 and MCI's oldest alumnus, died in Hartford, Conn., on November 9, 1961. Pastor Emeritus of the First Church of Christ, Congregational, at Windsor, Conn., he served his entire active ministry from 1892 to 1932 at this single pastorate.

A farm boy from Canaan, Maine, he worked his way through the Canaan district schools, and then MCI. Upon his graduation from MCI in 1883 he recently reminisced, "The fact that I was solvent with some 37 cents in my pocket is a vivid memory."

Skilled as a carpenter and willing to spend winter terms as a teacher in country schools, he earned his way through Bates College at Lewiston, where he graduated as valedictorian in 1887, with a B.A. degree. He was also Bates College oldest living alumnus.

From 1887 to 1889 Mr. Nelson served as principal of the Putnam, Conn., High School, leaving this post for study at the Yale Divinity School, from which he graduated in 1892. He became pastor of the First Church in Windsor that same year.

Although Mr. Nelson's one and only pastorate was with the First Church, he frequently filled summer and vacation appointments at other churches. He was made pastor emeritus following his retirement in 1932 from the Windsor Church, but for many years, and until he was 96, he officiated at the First Church on the anniversary Sunday of his becoming minister. He last spoke in church in May of 1960 at a special service.

Mr. Nelson was always a loyal and active alumnus of MCI, and until very

recently had maintained an interesting correspondence with the school's Alumni Office.

His wife died many years ago, and he maintained his own home in West Hartford near one of his sons, R. Winthrop Nelson, an investment broker. Another son, Frederic Nelson, is a senior editor of the Saturday Evening Post.

\* \* \*

Herbert Thompson Powers, retired superior court justice, and a trustee and longtime friend of MCI, died in October 1961 at his home in Portland, after a long illness. Justice Powers was 90 at the time of his death.

Born in Pittsfield, Maine, on November 13, 1870, the son of Mr. and Mrs. Hannibal Hamlin Powers, he attended the local grammar schools and graduated from MCI in 1887. He graduated from Bowdoin College and was admitted to the Maine Bar in 1892. He first practiced law in Blaine, Maine, and later moved to Fort Fairfield, where he practiced until his appointment as a superior court justice in 1930. He held this position until he retired in 1940 and moved to Portland.

Justice Powers served as county attorney for Aroostook from 1903 to 1907. He was a member of the Fort Fairfield Rotary Club, the Chamber of Commerce, and the Aroostook Valley Country Club. He was a founder of the Frontier Trust Co. of Fort Fairfield, and served as a director and president of the company for many years.

He was a member of the Maine Bar Association, the American Bar Association, the Eastern Frontier Lodge, Fort Fairfield, and the Garfield Chapter R.A.M.

The justice first married Una Lincoln Neal of Houlton in 1900. She died in 1912. He married Etta Pauline Haynes of Bangor in 1916. His second wife died in 1940. He is survived by a son, Neal, of Fort Fairfield;

a daughter, Mrs. Alton Hall Blackington of Beverly Farms, Mass., and a step-daughter, Mrs. Harold Sands of Northampton, Mass.

\* \* \*

Dr. Everett C. Higgins, one of the most respected and greatly beloved physicians in Central Maine, died at his home in Lewiston on October 5, 1961. Dr. Higgins was 81.

Born on Lincoln's birthday, 1880, in Pittsfield, Maine, Dr. Higgins, "Hig" or "Doc" to his thousands of patients and friends, was often noted for his striking resemblance to former President Lincoln. The tall, spare, Lincoln-esque figure, driving a somewhat battered Buick and carrying a little black bag was a familiar sight in the Lewiston-Auburn area. He engendered a profound respect for his knowledge, both of medicine and people, and for his dry humor, laconic speech, calm philosophy and steadfast principles.

Dr. Higgins graduated from MCI in 1899 and from Bates College in 1909. From 1903 to 1905 he served as principal of the Bowdoinham High School. He was principal of the Guilford High School from 1906 to 1910.

While holding that position, he was studying at the Maine Medical School of Bowdoin College, graduating in 1911. He interned at the Central Maine General Hospital and began his practice in Phillips, Maine.

He was a long-time resident of Phillips and belonged to numerous professional and social organizations, including state, county, and medical groups. He was a member of the Mt. Blue Lodge of Masons of Phillips, the Androscoggin Historical Society, the Stanton Bird Club, the Sons of the American Revolution, and was on the board of directors of the Sara C. Frye Home for Aged Women.

In 1915 he married a Bates classmate, the former Hazel Donham of Hebron.

Survivors include his widow, his son, Lt. Col. Harold D. Higgins of Storrs, Conn.; two sisters, Mrs. Carl Stinson, Clinton, and Mrs. William Smith of Winslow; a brother, Dr. George I. Higgins of Newport; three grandchildren and several nieces and nephews. To all his family goes the sincere sympathy of his many MCI friends.



# A STORY OF TWO CAREERS

The driving energy and spirit that made Carl Smith an outstanding figure on the MCI campus in 1908 has carried him through two eminent careers: in agriculture and in railroading. Long recognized as a leader in Maine agriculture, Carl Smith became liaison expert to the Bangor and Aroostook Railroad in 1945 and only recently retired from active railroad service as a vice-president of the B. & A.

BAR president W. Gordon Robertson on the occasion of Mr. Smith's retirement noted his 16 years of valuable and unique service to the railroad during an important period in its development.

"As the railroad's trouble shooter, legislative advisor and goodwill ambassador extraordinary, Carl Smith came to know hundreds of Aroostook people and has become to be thought of in the area as Mr. B. & A.," Robertson said. "His energy, his understanding of the problems of the farmer and his personal magnetism have helped him make many friends for the Bangor and Aroostook. His contributions to both the railroad and the potato industry have had far-reaching significance."

Let's cast an eye at Carl's MCI record. We find: Football '05, '06, '07; Basketball '06, '07, '08; Baseball '08; Basketball captain '07, '08; Baseball manager '08; Manson Prize Speaking '07; Athletic Editor, *MCI* '07, '08; Amicinia; and possibly most significant, the Address to Undergraduates, perhaps the most sought-after distinction available to members of each senior class during that period of MCI history.



A member of the Class of '08 at MCI, Mr. Smith, following his subsequent graduation from Colby, operated general stores and woodworking mills in his home town, Exeter, Maine. He later purchased farm property and rapidly became one of the largest potato and farm crop producers in southern Penobscot County. In 1938 he was recognized by the University of Maine as an outstanding farmer and from 1941 to 1945 was Commissioner of Agriculture for the State of Maine. In 1948 he was appointed to the Agriculture Committee for the United States Government.

MCI takes considerable pride in the accomplishments of Carl Smith, farmer, railroadman and gentleman.



Talented MCI juniors competed this winter in the finals of the annual Manson Essay Contest. According to best evidence on file at the Alumni Office, this represented the 92d consecutive Manson Contest, the prizes first being offered in 1870.

## SKIP CHAPELLE - Little All-American

Thomas (Skip) Chappelle, MCI '58, shown with his parents, Mr. and Mrs. George Chappelle of Old Town, is fondly remembered as perhaps the finest basketball player in the history of the School. In 1958 he led MCI to the New England Preparatory School Championship, and during the season scored 376 of his team's 1048 points for the regular schedule. It is not generally remembered, in view of Skip's basketball feats, but he was also a standout for Rod Smith's Prepper baseball team that spring.

But his efforts at MCI were only a prelude to the success he was to have with basketball at the University of Maine, where during four years he established 14 varsity records and two freshman records.

Skip, the greatest scorer in the history of Maine collegiate basketball, was named to the Associated Press Little All-American first team last year as a junior, but perhaps his biggest thrill came this March, when he was the first collegiate player in the state to be drafted by a National Basketball League team, the St. Louis Hawks.

Skip's plans for the future have not been completed; but he feels certain that they will involve basketball, whether in the pro ranks or in a coaching capacity. Whatever Skip decides he may be certain that he has all best wishes from his scores of MCI friends.





# WAY BACK WHEN

## FIFTY-SEVEN YEARS AGO —

1905 . . . Athletics at MCI and their role in the school program were a hot editorial topic in the student publications. "Win at any cost" was falling into disrepute, and a toned-down athletic policy was being advocated. . . . Apparently unaware of the furor, the MCI football team opened the season by thumping Foxcroft Academy 28-0. Players included Piper, Smith, Kimball, Allen, Fickett, Thurlow, Quinn, Sturtevant, Gilley, Sargent, and Kimball, with subs Keene, Rand, Lucas, Turner, and Richardson being graciously inserted during the second half. . . . Talk about school indicated that the first team was just great, but that the "scrubs" were showing a lack of enthusiasm. . . . Among the new teachers were Lillian Alice Norton, preceptress; Ethel Vivian Laughton, teacher of elocution; and Lewell Seth Walker, science teacher. . . . Students, through the "M.C.I.", expressed appreciation to the Class of '00 for the gift of a bust of Shakespeare. . . . The baseball season brought no joy to the campus. Some scores recorded are Pittsfield 6 - MCI 0; Bucksport 7 - MCI 3; Coburn 17 - MCI 5; Dexter 15 - MCI 10; Bucksport 10 - MCI 2. Lack of pitching was given as reason for the lop-sided contests. . . . Tennis was literally a washout during the spring. Heavy rains swamped the courts. . . . Students were advised that a year at the University of Maine could run as high as \$250; including tuition, board and room, and incidentals. A student poll of "statistics" indicated that Vera Brant was noted for being out nights, Adah Clark for studiousness, Olive Dyer for moonlight rambles, Archie Hayden for beauty, Flora Lucas for appetite, Amy Porter for breaking study hours, Zana Prescott for grinning, Mildred Schermerhorn for bashfulness, Mary Sweetland for masquerading, Ida Tibbetts for plugging geometry, and Mary Webster for deviltry.



This rare picture of the 1899 MCI football team was donated by R. Herman Mansur '00 for inclusion in the Memorabilia Display at the Powell Memorial Library. Herman is second from the left in the second row. From the November '99 MCI, information was obtained that this team, through its spirit and determination, had done more for football at the school than any previous team. After absorbing a fearful 44-0 shellacking from Coburn during its first outing, the courageous squad went on to a winning season. Included above are Sweetland (lh), J. MacFarlane (re), B. H. Chatto (mgr.), H. R. Mansur (rt), F. Hunter (rg), McGilvery (le), W. J. MacFarlane (rg), R. Haseltine (qb & capt.), Walker (sub), R. Corey (c), Sawyer (sub), Boston (lg), J. Daley (lh), Seekins (sub), Halliday (lt).

## FORTY-NINE YEARS AGO —

1913 . . . . New teachers for the academic year 1912-13 included J. L. Humbert, sub-principal, Grover Dow, Herman Ebell, Lillian Carll, and Bertha Smith, instructor of music. . . . The MCI Christian Association welcomed new students with a reception in Powers Hall. Roland Eaton spoke for the YMCA, Fred Willey for the Athletic Association, and Ruby Willis for Sorosis. . . . "Hi" Greene captained the football team, with Norris Friend as manager and newly appointed Professor Ebell as coach. The first game of the season was a bit of a shocker, MCI bowing to powerful Bates, 0 to 34. The boys bounced back for the next one, measuring Cony High 20-7. . . . Hurd, Whitten, Thurston, Greene, Maxim, and Parkman were the big guns on a basketball team that dropped its first game by one point to the Alumni, 32-33. . . . The Amicnian Society elected Arthur S. Dole, president; Ray L. Marsh, vice-president; Elmer Forbus, secretary and treasurer,

Everett Hurd, Allen Hackett, Walter Moores, executive committee; Chester Robinson, marshal; Mr. Allen, sentinel; Roland Eaton, chaplain. . . . Amicnian chaplain Roland Eaton occupied the pulpit of the Baptist Church during the absence of the pastor, the Rev. H. W. Ford. . . . Sorosis elected Natalie Taylor, president, Afton Smith, vice-president; Marion Herrick, secretary; Alta Davis, treasurer; Marion Hanson, pianist; Veda Priley, Marion Wakefield and Mary Drake, executive committee. . . . Freshmen prize speakers were Morrill Burse, "The Slavery Issue"; Helen L. Libby, "Wee Willie Winkie"; Ernest Hackett, "The Martyr Spy"; Mildred I. Webb, "How the La-Rue Stakes Were Lost"; J. Linwood Badger, "A Democratic Victory"; Myrtle I. Pushor, "The Soap Sale"; Virgil Goodrich, "The First Bunker Hill Oration"; "The Decision of Little Pat," Amelia Haskell; "Eulogy on Lafayette," Porter Hobbs; "The Perfect Tribute," Hazel I. Pushor. . . . The MCI basketball team after dropping its



opener to the Alumni, went on to win 10 straight, and issued a challenge, over the name of manager Robinson, to any team in Maine for the State Championship; Portland, Rumford and Deering teams preferred, according to Robinson. . . . Meanwhile, the debating team was scoring victories, led by Merle McAllister, Frederick Willey and Roland Eaton. . . . But the biggest excitement of the year was the resignation of sub-principal J. L. Humbert. In a letter to the school's executive committee, Humbert charged the school with "lax conditions" that made him unable to conscientiously perform his duties. He also charged, according to newspaper headlines in May, 1913, that Principal Landman refused to cooperate with him. . . . To close out an exciting school year, the baseball team defeated Bangor High to win the championship of the Penobscot Valley Interscholastic League. When the team arrived from Bangor on the train, they were greeted by the Pittsfield Band, red and green fire, and rockets. Buckland, MCI crack pitcher, was carried down the street on the shoulders of "Hi" Greene while the cannon on the W. R. Hunnewell lawn roared a 12-gun salute. And how the MCI bell did ring. . . .

### THIRTY-NINE YEARS AGO —

1923 . . . . The spring of 1923 brought the usual things: the announcement of Senior Class Parts, Class Day Parts, the Junior-Senior Reception, the drying of the tennis courts, the drying of the paths behind the tennis courts, and the quaint May Day celebration that saw a wreath dance by Ruth Mudgett, Cynthia Phillips, Helen Newhouse, Marion Buzzell, and Agnes Moores. Equally interesting was the Highland Fling as flung by Isabel Frame, Virginia Hunter, Josephine Nason, Charlotte Kimball, Katherine Files, and Catherine Provencher. . . . To return to Class Parts, Irma Davis was chosen valedictorian, Edna Childs, salutatorian, and Dorothy Clay, Marguerite O'Roak, Eleanor Taylor and Leland Thurlow won honor parts. . . . Class Day parts included: Chaplain, Pearle Damon; History, Ellen Henderson;



From the Hazel Copeland French '15 collection comes this interesting picture of the girls' basketball team for 1914. The girls, described at the time as "heavier than last year, but at the same time speedy and accurate," had a six game schedule: the Bar Harbor YWCA, Oak Grove Seminary (2), Foxcroft Academy (2), and Coburn Classical Institute. Seated are Marion Estes, Hazel Copeland, Edna Tracy. Standing: Mabel True, Ada Bell Kennan, Madeline Jordan, Mrs. Swift.

Will, Stanley Fuller; Prophecy, Isabel Frame, Gwendolyn Hanson, Everard Hall, and John Karkos; Presentation of Gifts, Marjorie Green and Reginald Johnson, Address to Undergraduates, Ronello Reynolds. . . . The newly formed "M" Club elected John Karkos chairman and Bernard Knowles and Elmer Chase committeemen. The "M" Club girls elected Ellen Henderson, president; Mary Friend, 1st vice-president; Velma McClure, 2d vice-president; and Marada Johnson, secretary. . . . Twenty-five candidates reported for baseball following Coach Stone's call for volunteers. Included were veterans Capt. Craig, Jess Fuller, Lloyd Stitham and Walter Gordon. MCI took the first game of the season, with a 10-4 victory over Besse High of Albion. Jess Fuller and Sam Lowell pitched, and Craig, Newhouse and Stitham were sturdy at the plate. . . . In track, Newhouse looked good in the distance events and Fuller was hard to beat in the dashes and middle distances. Pole vaulters were Thomas, Willis, Stitham, and Annis. . . . Wandering back to the May Day festival with its wreath dance and Highland Fling, our anonymous reporter from '23 spoke breathlessly, "Everything went off well; even the paper dresses. (Wind was blowing a steady gale.)"

### '55 Graduate Tracks Glenn

From Page 4

1960, has been assigned to the installation, maintenance and operation of Project Mercury equipment at Wallopo Island, Virginia, and Bermuda, quite an achievement for a young man of 24.

Active in all sports while at MCI, he was also a member of the "Trumpet" staff, and a member of the senior executive council. Francis enlisted in the U. S. Marines shortly after graduation and was almost immediately ordered to the Electronics School at Great Lakes, Ill. He completed his enlistment as an aviation electronics technician, following an intensive course at the Aviation Repair School in San Diego, California. Accepting employment with the Bendix Corporation upon termination of his Marine enlistment, Francis made rapid advancement from a service technician to his present responsible position as communications engineer to Project Mercury.

Francis' parents are Mr. and Mrs. Howard Bowen of Pittsfield. The Bowens (Anne McCready '55) have two daughters, Janet 4, and Brenda 2. The family is at present residing very comfortably in Bermuda.



# MCI BUILDERS

## 1961

The MCI BUILDERS, twenty-two in number to April 15, 1962, have thus far contributed \$3889.00 to the current Development Fund Drive, a major aid to the Alumni Association's pledge to substantially reduce the indebtedness incurred by the construction and completion of the new boys' dormitory-cafeteria.

MCI is grateful to the Builders, whose gifts in the amount of \$100 or more represent the solid base on which your Alumni Association's efforts stand.

Anonymous '32-'30	Pittsfield, Maine
Leo W. Blaisdell '08	East Franklin, Maine
Warren S. Churchill '14	Tulsa, Oklahoma
Mrs. Eugene Drake	Gorham, Maine
Bertha Smith Furber '31	Bar Mills, Maine
Ethel Vickery Hambleton '97	Natick, Mass.
Earle A. Harding '11	Wilmington, Delaware
Donald F. Humphrey '26	Pittsfield, Maine
Class of '25 for Language Lab	
Mr. and Mrs. Frank L. McCausland '14	Wollaston, Massachusetts
Thomas D. Mourkas	Bangor, Maine
Johnson W. Parks	Waterville, Maine
Hayward T. Parsons '12	Providence, Rhode Island
Mr. and Mrs. Albert L. Partridge '04-'05	Watertown, Massachusetts
Myron C. Peabody '11	E. Longmeadow, Massachusetts
Harry W. Rowe '06	Lewiston, Maine
Earle N. Vickery '04	Pittsfield, Maine
Claude R. Weymouth '09	Memphis, Tennessee
Agnes Parks Winslow	Coventry, Rhode Island
Class of '11 for Books	

The current Alumni Development Fund, started in March, 1961, will terminate on August 15, 1962. Final complete listings, including the leading classes in the several categories, will be published following the final tabulation at that time.



# A SPECIAL CITATION

The MCI Alumni Association issues a special citation to this impressive list of Alumni and friends, who through their gifts in the amount of \$10 to \$99, have contributed so notably to the success of the present Alumni Development Fund, ending this year on August 15, 1962.

Eva Springer Allen '06  
In Memory of Eva Joselyn Atwell '04  
Vera Goodale Bailey '20  
Arlo F. Barton '09  
David A. Bates '61  
Marion Manter Beal '06  
Ruth McCausland Bearce '17  
Robert K. Berry '51  
Gladys M. Bigelow '10  
Margaret Gosline Blaisdell '42  
Peggy Andrews Bond '32  
Adelbert E. Bridges '11  
Adah Clark Brown '05  
Helen Newhouse Brown '23  
Dr. Raymond H. Brown '27  
Philip Buker '53  
Katherine M. Bunker '06  
Sylvester B. Burch '56  
Una Cornforth Burkhart '12  
Edmund F. Carey '12  
Geraldine Scott Carleton '33  
Frederic J. Caron  
Bertha W. Carter '17  
Rena Jones Chandler '11  
Harry M. Chatto '11  
Mary Smith Christie '13  
Carl E. Cianchette '37  
Edward J. Cianchette '50  
Rufus E. Colby '16  
Clementina Johnston Connor '29  
Sanger M. Cook '17  
Lynwood A. Cookson '36  
Mr. and Mrs. Paul Coolidge  
Bertha Maxfield Corey '95  
Herman G. Cowan '35  
Nicholas J. Craig '38  
Ralph B. Craig '23  
Charles W. Creaser III '60  
Ruth Milton D'Amico '27  
Rene Devoe '26  
Gladys Colwell Donahue '32  
Donald M. Duncan '47  
Audrey Green Dunning '36  
Hazel Fletcher Eaton '12  
Verna Coffin Farrow '16  
Shirley M. Fields '52  
Mr. and Mrs. Lewis R. Fitts '45-'47  
Jere E. Freeman '49  
Ivan B. Friend '13  
Lizzie Tufts Friend '14  
Raynold L. Fuller '23  
Mary Whitten Garfield '20  
Winthrop C. Gillis '60  
Leila Patten Gilman '01  
Stuart W. Goodwin '03  
Mr. and Mrs. Laurice E. Gould '36  
Owen C. Gould '12  
Donna Hodgins Graham '46  
Robert A. Graham '42  
Maurice E. Graves '24  
Hazel Young Grinnell '10  
Oscar J. Groehl  
Michael T. Harkins '58  
Cecil Harribine '25  
Ruth Palmer Harribine '24  
William R. Hatch '48

Vincent L. Hathorn '31  
Dorothy M. Higer  
In Memory of Everett C. Higgins '99  
Dr. George I. Higgins '05  
Melissa Brown Howarth '06  
Florice Baker Hubbard '38  
In Memory of George F. Hubbard '17  
Robert N. Hubbard '38  
Robert E. Hutchinson '51  
Maude Brackett Hyde '92  
William D. Ireland '12  
Vivian Laughton James '01  
Hazel Twitchell Johnson '28  
Dr. Henry P. Johnson '11  
Marada L. Johnson '23  
Mr. and Mrs. Andrew J. Karkos '27-'21  
Ellen Packard Kay  
Bernard A. Kidder '33  
Richard A. Kidder '60  
E. Robert Kinney '35  
Hilda Bradford Lake '35  
Barbara Kimball Larlee '27  
Elizabeth Campbell LaZerte '42  
Julia Cowan Lehr '27  
Sylvia Snow Lehr '42  
Willard W. Lehr, Jr. '42  
David C. Libbey '35  
Wayne Libhart  
Milton Lindholm  
Alice Murch Lindquist '27  
Roy E. Lindquist '25  
Leroy C. Luce '18  
Ruth Runnals Lyon '11  
James E. MacMichael '59  
Mertie Willis McAllister '07  
Madeline Coolidge McKinnie '29  
Barbara Stanley McLean '32  
A. Russell Mace '10  
In Memory of Charles A. Magoon '05  
Madeline Bradford Malcolm '37  
Raeburne L. Marsh '14  
Walter E. Mathews '07  
F. Roger Miller '12  
Orrin L. Miller '06  
Harvey E. Mitchell '21  
Walter E. Moses '19  
Robert M. Moulton '40  
Donald R. Murphy '58  
Henry W. Nason '20  
Paul E. Nason '30  
Roscoe W. Nelson '83  
Phyllis Estes Norton '15  
Rita Bouchard Norton '39  
Alice Cowan Osgood '12  
Mr. and Mrs. C. Alton Palmer '19  
Frances M. Palmer '30  
Mary Hanson Parkman '14  
Mary Webster Patton '05  
In Memory of Reuel Patten '00  
Mr. and Mrs. Linwood J. Pelletier '47  
Rev. John S. Pendleton  
Daniel R. Phillips '31  
Leora E. Prentiss '07  
Donato C. Profenno  
Edwin M. Purinton

Elton L. Quinn '06  
Helen Libby Ray '16  
Homer F. Ray '15  
Dr. John F. Reed '33  
Dr. and Mrs. Alton Richardson  
Dr. Magnus Ridlon '17  
Clyde J. Roach '50  
Clarence A. Robertson '09  
Miriam McMichael Robinson '25  
Iris Hubbard Rosenthal '31  
Mr. and Mrs. Boutelle Savage  
Ida Tibbetts Schenk '05  
Mr. and Mrs. Royal Sherburne '13  
E. Mildred Schermerhorn '05  
Helen Childs Shorey '18  
Marguerite T. Shute '42  
Paul S. Silsby '56  
William S. Silsby '21  
Mr. and Mrs. Roy U. Sinclair  
Ervena Goodale Smith '18  
In Memory of Charles Snow '05  
Robert P. Spalding '61  
Mr. and Mrs. Edward R. Stanley  
Marshall A. Stern '59  
Blanche Morton Stevens '04  
Carl H. Stevens '03  
Roy M. Strout '07  
Lydia Bickford Susi '17  
Dana W. Sweet  
Florence Blaisdell Sweet '11  
Arthur E. Tarbell '06  
Leonard J. Thompson, Jr. '61  
Norman N. Thurlow '26  
Cecil A. Thurston '14  
Elwin R. Trickey '12  
Alice Kinney Titus '33  
Mr. and Mrs. Charles M. Toner '38-'39  
Eleanor Toothaker '30  
William H. Vance '54  
Carlo D. Vangeli '51  
Isabel Lothrop Vaughn '93  
Aubrey W. Vose '37  
Ferne Hoxie Webendorfer '11  
John M. Wentworth '50  
Frederick R. Weymouth '07  
Elizabeth Coolidge Whalen '48  
Avis Maddocks Whitcomb '15  
Gladys E. Whitmore '08  
Mr. and Mrs. Emery Whitten '24-'25  
Fred W. Willey '13  
Carl R. Wright '43  
Mr. and Mrs. Clifford L. Wright '38  
Leta Young '06

The current Alumni Development Fund, started in March, 1961, will terminate on August 15, 1962. Final complete listings, including the leading classes in the several categories, will be published following the final tabulation at that time.



## A LIVING ENDOWMENT

Although the current Alumni Development Fund effort will not end until August 15, 1962, your Alumni Association is proud to make this interim report. Since the start of this extended fund year on March 1, 1961, there have been 463 contributions, to the amount of \$7,031.45, to April 15, 1962. This is a notable effort, particularly in regard to the large number of Alumni and friends who have so generously contributed. These funds will make it possible for your Alumni Association to continue its annual contribution toward the reduction of the new dormitory-cafeteria indebtedness, as well as to provide the \$500 Alumni Scholarship established in 1959.

If the average gift dropped from \$21.40 for the previous fund year to \$15.18 to date (April 15) for this year, the Alumni Association feels that this drop is more than offset by the greatly increased participation shown in the current effort. Membership in the dollar-a-year club—earned by those whose gifts equal or surpass in dollars the number of years since graduation from MCI—was granted to 67, a marked increase over last year's club membership of 45. In the following lists, dollar-a-year club membership is indicated by bold type. Parentheses indicate the number of contributions since the start of the present fund drive.

Complete and final listings will be published by your Alumni Association at the termination of our extended fund year on August 15, 1962.

1883	1-100%	\$88.95	Dr. George I. Higgins Lana E. Prescott Adah Clark Brown	Florence Blaisdell Sweet <b>Myron C. Peabody</b>	Delbert O. Fuller Horace G. Newhouse Thelma Nason Palmer Walter J. Colby						
1891	1-100%	\$5.00	1906	11-45%	\$192.00	1912	11-38%	\$260.00	1917	6-17%	\$145.00
Caro Murray Guimond			Ethel M. Reed Dora Norton Billings Katherine M. Bunker Marion Manter Beal Melissa Brown Howarth (2) Orrin L. Miller Leta Young Arthur E. Tarbell Eva Springer Allen Elton L. Quinn <b>Harry W. Rowe</b>	Iona Tibbetts Britt (2) <b>Hayward T. Parsons</b> Alice Cowan Osgood William D. Ireland Hazel Fletcher Eaton Una Cornforth Burkhart Edmund F. Carey Elwin R. Trickey <b>Owen C. Gould</b> F. Roger Miller Olive Gray Gilman	Lydia Bickford Susi (2) Bertha Wheeler Carter In memory of George F. Hubbard Ruth McCausland Bearce <b>Dr. Magnus Ridlon</b> Sanger M. Cook						
1892	1-50%	\$10.00									
Maude Brackett Hyde											
1893	1-50%	\$25.00									
Isabel Lothrop Vaughn											
1895	2-50%	\$30.00									
Bertha Maxfield Corey Waldo T. Merrill											
1896	1-17%	\$5.00									
Mertie Hanson Palmer											
1897	1-20%	\$100.00	1907	8-53%	\$160.00	1913	5-25%	\$58.00	1918	9-20%	\$61.00
<b>Ethel Vickery Hambleton</b>			Walter E. Mathews Leora E. Prentiss Frederick R. Weymouth <b>Bertha Smith Furber</b> Roy M. Strout Cora E. Mills Annie D. Clark Mertie Willis McAllister	Mary Smith Christie Ivan B. Friend Royal G. Sherburne Vida Prilay Sherburne Ruth G. Turner Frederick W. Willey	Ervena Goodale Smith Ruth Peabody McNamara Frank L. Milan Hazel Springer Gurnee Mark A. Hurd Leroy C. Luce Vernon A. Libby Helen Childs Shorey Harry P. Brann						
1898	1-10%	\$5.00									
Ina Lancaster Allen											
1899	1-14%	\$10.00									
In memory of Dr. Everett C. Higgins											
1900	3-75%	\$17.00	1908	4-20%	\$214.00	1914	13-30%	\$278.00	1919	4-13%	\$23.00
Herman R. Mansur Ethel Walker Fitts In memory of Reuel Patten			Isa Herrick Packard <b>Leo W. Blaisdell</b> (2) Flora Gleason Ames Gladys E. Whitmore	<b>Warren S. Churchill</b> Hazel Adams Plummer (2) Lizzie Tufts Friend Eliza Smiley Cecil A. Thurston <b>Frank L. McCausland</b> <b>Beth Russell McCausland</b> Raeburne L. Marsh Arlene Burnham Beulah Nickerson Hawes Mary Hanson Parkman Clare Linscott Tower	Walter E. Moses C. Alton Palmer Ruth Whitten Palmer Laura Lucas Farrell						
1901	4-40%	\$57.00									
Vivian Laughton James (2) E. Irma Rogers Leila Patten Gilman (3) Minnie Porter											
1902	1-33%	\$5.00	1909	6-32%	\$142.00	1915	9-20%	\$73.00	1920	5-11%	\$45.00
Edith Goodwin Abbott			Arlo F. Barton <b>Claude R. Weymouth</b> Lillian Robinson Towle Marian Peabody Bessie Patten Gilmore Clarence A. Robertson	Phyllis Estes Norton Helen Lawrence Stewart Avis Maddocks Whitcomb Dorothy M. Crawford Marion Estes Morrill Jennie M. LaDame Homer F. Ray Ruth Morse Webber Allen P. Hackett	Vera Goodale Bailey Henry W. Nason Evelyn Janes Clough Mary Whitten Garfield (2) Robert A. Goodell (2)						
1903	2-66%	\$30.00							1921	6-17%	\$55.00
Carl H. Stevens Stuart W. Goodwin (2)									Lawrence P. Bagley William S. Silsby Doris Harmon Henderson Harvey E. Mitchell Irene Reynolds Karkos Hildred Craig Bauer		
1904	4-36%	\$192.00	1910	3-14%	\$100.00	1916	11-28%	\$69.00	1922	8-21%	\$22.00
Blanche Morton Stevens In memory of Eva Joselyn Atwell <b>Albert L. Partridge</b> <b>Earle N. Vickery</b>			Gladys M. Bigelow (2) Hazel Young Grinnell A. Russell Mace	Glendon H. Libby (2) Verna Coffin Farrow Edith M. Mitchell Helen Libby Ray Rufus E. Colby Ernest C. Smiley Etta Gray Collins	Edna Taylor Dunton Irene Tibbetts Traskers S. Ellen Henderson Marguerite L. O'Roak Leland L. Thurlow Everard E. Hall Isabel Frame Wright Leonice P. Moody						
1905	11-71%	\$226.00	1911	12-50%	\$546.00				1923	7-23%	\$55.00
E. Mildred Schermerhorn (2) Mary L. Sweetland In memory of Charles A. Magoon (2) Mary Webster Patton <b>Olive Dyer Partridge</b> Amorette Porter Ida Tibbetts Schenk (2)			<b>Harry M. Chatto</b> (3) Dr. Henry P. Johnson Helen Philbrick Ward (2) <b>Earle A. Harding</b> (2) Ferne Hoxie Webendorfer Rena Jones Chandler <b>Adelbert E. Bridges</b> <b>Ruth Runnals Lyon</b> Ellen Packard Kay (Class Advisor) Mildred Bartlett Walker					Raynold L. Fuller Helen Newhouse Brown Leola Mitchell			







# Notes From The Campus

**PUBLICATIONS . . .** The *Talisman*, MCI's student newspaper, was bigger this year than ever before, appearing in seven printed issues, a new record, and with six pages, rather than the customary four, for the last two issues. The quality of the *Talisman* has remained high. Faculty advisors Dana Fields and Oscar Auger found themselves fortunate with an editor, Donna Penney '62, who proved not only to be a colorful and prolific writer, but a capable administrator as well. The senior yearbook, the *Trumpet*, was again assembled under the direction of advisor Norbert Young. Mr. Young was well served by editor Preston Carter (valedictorian of his class), editorial assistants Ann MacMichael and Alfred Giovannucci, and business managers Ronald Bessey and Sonja Davis, all members of the Class of '62.

## CHAPELS AND ASSEMBLIES . . .

The student body at MCI has enjoyed, as in the past, frequent chapel and assembly programs in the Parks Memorial Gymnasium. The robed Chapel Choir, under the direction of Music Director Ted Burgoyne at the Long Memorial Organ, has dignified and enriched the chapel services; an interesting list of guest speakers and artists has provided meaningful assemblies for the student body. Chapel services have been addressed by members of the local clergy, including the Reverend Donald M. Hinckley, pastor of the Universalist Church of Pittsfield and the Reverend Peter M. Kemper, pastor of the First Baptist Church of Pittsfield. The assemblies have included Lloyd Bemis, a guidance specialist; the Percussion Trio, recording artists; Dr. Daniel F. Hanley, Bowdoin College physician and team physician for American Olympic groups; The Carradines, in "Scenes from Great Plays"; and Thurlow Cooper '53, who spoke of his experiences as a member of the New York football Titans.

**ORGANIZATIONS . . .** Under the direction of Mrs. Frances Piper, English faculty chairman, a Speech Bureau has been activated for the first time at MCI. The Bureau has provided speakers and dramatic readings for local clubs and civic organizations.



The MCI Chapter, Future Homemakers of America, is again one of the largest and most socially active groups on campus. FHA president, Sonja Davis '62, shown standing in the center of the club's officers, was local, regional and state winner in a national sewing contest sponsored by the Federated Women's Clubs of America. Miss Davis' creations have been entered for national judging at New York City in June.



MCI's unique Humanities Colloquium has been reorganized under the direction of Norval Lewis and Thomas Huston, both of the English faculty. Comprised of outstanding junior and senior students, the group meets regularly to informally discuss the Arts: music, painting, sculpture, architecture, literature and philosophy.

Members of the Bureau have been chosen for their reading and dramatic ability, as evidenced by their work in Alumni Prize Speaking, Manson Essays, and the One-Act Plays. The Future Homemakers of America chapter, under the leadership of Sonja Davis '62, again played its important part on the MCI scene. The Future Homemakers, among other activities, conducted a tag day for the Seabrook Association for Retarded Children, and participated in a house-to-house canvass for the Heart Fund. Advisors are Mrs. George Webber and Mrs. Roy Sinclair, both of the home economics faculty. A flourishing Latin Club, under the supervision of Mrs. Maurice Earle, has raised money for a record player, and has had a succession of lively meetings. A Latin Banquet

was the social highlight of the club's activities. Linda Hubbard '62, First Honor Essayist of her class, has served as president of the club. The Humanities Colloquium, under the faculty direction of Norval Lewis and Tom Huston, has met regularly to provide interested students a closer insight to the Arts.

**THE KEY CLUB . . .** Under the leadership of Tom Wright '62 and the supervision of faculty advisor Wesley Ryder, the MCI Key Club has continued to play an important part in school activities and in extra-school civic betterment projects. The Key Club annual Appreciation Banquet for faculty and parents was held in November, and the Fall Prom was conducted in conjunction with the dormitory Parents' Weekend. At the Prom,



Carole Rodgers '62 was chosen Key Club Sweetheart for 1961-62. Christmas time found the Club collecting toys and repairing them for distribution to charitable organizations. A Youth Center was started in January to provide a program of basketball for boys under 12; coaches for the six teams were drawn from club members. At the Key Club Annual Sno-Ball, Jean Fuller '62 was crowned Queen and Tom Winsor '62, King. In March the Key Club held its March of Dimes Benefit Night, a popular annual affair that pitted a faculty team against the Undergrad Huskies, and a Key Club group against the Pittsfield Kiwanis. According to an announcement in February by Kiwanis Lieutenant-Governor Mr. Lance Tapley, the MCI Key Club ranked first in overall achievement in Maine District 9.

**PRIZE SPEAKING . . .** The Annual Prize Speaking Contest, lately restricted to members of the freshman and sophomore classes, was held at Powers Hall on February 12. Winning cash awards provided by the MCI Alumni Association were Maryjane Christie of Newport and Donna Shore of Palmyra. Second place winners were Joyce Furman and Carlene Cianchette, both of Pittsfield, who also received cash prizes. In the 92nd annual Manson Essay Competition, first prize winners were Anne Witham and Allen Dyer, both of Newport. Second honors went to Judy Knox of Pittsfield and William Ball of Pittsfield.

**DRAMA . . .** An ambitious program of six one-act plays was presented under the general supervision of Mrs. Frances C. Piper, chairman of the English faculty, during the month of December. In groups of three, presented a week apart, these well polished presentations drew capacity audiences to Powers Hall. Included in the first group were "Blue Stocking," directed by Mrs. Maurice Earle; "Take a Letter," directed by Mrs. Norbert Young; and "I'm a Fool," directed by Mr. Tom Huston. In the second group were "The Storm," directed by Mrs. Paul Witham; "French Toast," directed by Mr. Dana Fields; and "The Leader of the People," directed by Mrs. Frances Piper.



Six one-act plays were produced this year at MCI, under the overall supervision of Mrs. Frances C. Piper, chairman of the English faculty. These happy thespians are from the cast of "Blue Stocking," written by Conrad Richter and directed by Mrs. Maurice Earle.

**MUSIC . . .** Music at MCI continues to grow in importance under the direction of Theodore "Ted" Burgoyne. In addition to the band and orchestra, the school now boasts several girls' singing groups and a male quintet, the "Seniors Five." Ted has also organized a dance band, and his latest creation, the "Pro-Arts Instrumental Ensemble," provided intermission music at the Manson Essay Contest. Several MCI musicians were chosen to represent the school in the Kennebec Valley Band, Chorus and Orchestra. Money was raised at a tag day for several new band uniforms, to smarten the appearance of the combined Band and Orchestra, scheduled for a joint concert with the famed Guilford Band late in the spring. The various musical groups displayed their considerable talents at the annual Christmas Concert and at the always popular Pop Concert in March.

**OUTING CLUB . . .** LeForest Rolfe of Pittsfield was elected president of

the MCI Outing and Conservation Club for the year 1961-62. Under the leadership of outdoorsman Wally Cunningham and his camping neighbor, Clayton Kuhn, both of the science faculty, the club has offered an interesting program to students interested in conservation, hunting, fishing, or just plain camping. Fly tying classes were held during the confining winter months, followed by lessons in casting, demonstrated by Wally, a master of the craft. A final weekend fishing trip is planned for late May, probably to the Baxter Park area.



The "Melotones," one of several new singing groups organized this year by Director of Music, Ted Burgoyne, made their public debut at the popular annual Christmas Concert in December.

**DORMITORY COUNCILS . . .** Members of the various dorm councils play an important part in the democratic functions of interstudent relationships. The resident students have selected exceptionally fine teams. For the New Dorm: Richard Ackerman of Ellsworth, president; David Inman of Houlton, recording secretary; Henry

*Continued on Page 34*



Freshmen and sophomores competed in the finals of the annual Alumni Prize Speaking Contest at Powers Hall. Cash prizes to the two top speakers from each group were awarded by Principal Edward R. Stanley in behalf of the MCI Alumni Association.



# MCI In Sports



The football Preppers, coached by Al Card '49 and Verge Forbes, came on strong late in the season to finish with a 4-3, winning record. In their final game the Preppers dropped the highly touted Dartmouth Freshmen "B" team, 32-12, at Hanover, N. H.

## POSTGRADUATE FOOTBALL . . .

Over fifty candidates for the rugged P. G. football program reported to coach Al Card '49 and his assistant, Verge Forbes. Trimmed to 35 players by the opening game, the Preppers, after a slow start, came through with a rush to post a 4-3 winning season. After dropping their first two games to an awesome Bridgton Academy group, 12-14 and 0-6, on September 30 and October 7, the Preppers demonstrated their potential by trimming the Colby Frosh, 48-6, before a Parents' Weekend crowd at Mayflower Hill in Waterville. In what proved to be their final loss for the season, the Preppers bowed 6-20, to the Maine Frosh at Orono on October 20. On the following weekend at Manson Park, the Preppers roared back to hammer these same Maine Frosh, 14-0. From there it was all downhill pulling for the Preppers, as they measured the Bowdoin Frosh 26-8, and the Dartmouth Frosh (B), 32-12, on successive weekends to close out another winning season for the Cardmen.

## UNDERGRADUATE FOOTBALL

. . . . Coach John Shields and his hefty staff of assistants blinked in amazement as 74 undergrad football candidates trotted out to be measured for equipment. With less than two weeks to prepare for the opening game with Higgins Classical Institute, the immediate problem was to sort out a presentable line-up. On September 23 the Huskies outlasted HCI, 13-0, in blistering heat at Charleston. The

next two Saturdays saw losses to Old Town, 0-13, and to Kents Hill 7-21. But in the highpoint of their 1961 season, the Huskies forced highly favored John Bapst of Bangor to come from behind to tie the score 19-19. Those who saw this arc-light contest, played at Brewer, had nothing but praise for the underdog Huskies. Full of beans, an after effect of the John Bapst contest, the Huskies handily trounced Stearns of Millinocket at Manson Park,

The scholastic year 1961-62 noted a tremendously increased student participation in team sports. One reason, obviously, was that the school, with a fall enrollment of 568 students, was considerably larger numerically than ever. Secondly, under a new regulation, all boarding students not medicinally excused, were required to be active in some sport during the fall term. The fall momentum of sports interest was carried through to the winter and spring programs.

34-0, on October 21. The Boothbay Regional High School took the next outing, by a heartbreaking 13-6, at Boothbay, and the season was closed by another loss to big, experienced Kents Hill, 14-26. A 2-1-4 record can only add up to a "building year," but the Huskies had their moments of glory. That evening in Brewer with John Bapst will be warmly remembered. Considerable credit should be



Norbert Young's fall cross-country team dropped two contests by a single point, placed third in the State Prep School Meet.



The undergraduate Huskies footballers were a-building last fall, with a 2-1-4 record. Climactic game was a 19-19 heartstopper with fearsome John Bapst High School of Bangor, held under the lights at Brewer on October 13.



given to assistant coach Werner Beyer for his work with the Huskie JVs. Primarily a freshman group, the JVs won none of their three scheduled contests, but learned plenty of football under Beyer's tutelage.

**CROSS-COUNTRY . . . .** Veteran track coach Norbert Young has described the 1961 fall cross-country season as "fair," but pointed out that "fair" could have been "excellent," but for the unusual loss of two meets by a single point, to Waterville and Hebron. The MCI runners placed third in the State Prep School meet. "Norby" had two outstanding runners in Bob Bois of Biddeford, winner of the Maurice Earle Trophy, and Gary Fitzgerald of Bath. The MCI harriers took a triangular meet with Lawrence High and Maine Maritime Academy, and tipped Hinckley 26-36. Losses were to powerful Bangor, 43-17, and to the Maine Frosh, 49-15.

**SOCCER . . . .** Coach Rod Smith and assistant Dave Mosher were more than pleased to greet 57 soccer candidates. Although this number was soon shaken down to a more manageable 40, there was still plenty of material for both Varsity and JV squads. All who lasted had an opportunity to see action. The season was an unqualified success, if for no other reason than that the MCI booters twice defeated ancient soccer rival Hebron. Prior to the season of 1961, MCI had never beaten Hebron in soccer. In other contests, MCI lost to Hinckley twice and to the Colby Frosh once,



One of three MCI cheerleading groups, these six attractive misses cheered the "Preppers" teams during their fall and winter contests. There were also cheerleaders for the undergraduate "Huskies" and for the undergrad JV "Pups," all under the direction of Mrs. Janet Forbes of the faculty.

and defeated Kents Hill once. Coach Smith singled out Bill Albanese, Charles Aston, Bill Smith, Mike Imler and Don Profenno as outstanding contributors to MCI's soccer effort.

**FIELD HOCKEY . . . .** Field hockey coach, Malaka "Tookey" Russell, was faced with the same mixed-blessing as her counterparts on other fall coaching staffs — an overabundance of candidates. Confronted by 40 candidates to prepare for a nine game schedule to be played in 5 short weeks, Mrs. Russell was forced to trim her crew to a manageable size. The Varsity girls earned a 2-5-1 record, with one game cancelled. The JVs did considerably better, posting a final tally of 5-1-1, with one game cancelled, which augurs well for next fall. The MCI girls gave demonstrations of the game to the girls of Ellsworth High, and Lawrence High

of Fairfield, to help them start field hockey programs. Coach Russell placed two girls on the Central Maine All-Stars and five girls on the All-Star Reserve. Ann MacMichael was awarded the Malaka Russell Trophy for excellence in the sport.

**POSTGRADUATE BASKETBALL . . . .** The basketball Preppers enjoyed a fine 11-6 record under coach Verge Forbes. Victories included wins over such potent opponents as the University of Maine Frosh, Bridgton Academy, Hebron Academy, the University of Maine (Portland), the Maine Maritime Academy, Thomas Junior College, the Bowdoin Frosh, and North Yarmouth Academy. For the first time in several years, all Prepper lettermen were products of state of Maine secondary schools.



Field hockey coach Malaka "Tookey" Russell, shown here with an impressive bevy of shin-thwackers, contributed two of her squad to the Central Maine All-Stars, and five to the All-Star Reserves this past fall.

**UNDERGRADUATE BASKETBALL . . . .** Coach Bob Boulrisse and his undergrad Huskies fashioned a 5-10 record for the 1961-62 season. Hampered by ineligibility of key players and a rash of injuries, the Huskies still managed to exhibit some exciting basketball. Among the five wins gained by the Huskies were decisions over Newport, Skowhegan and Madison, all long-time rivals. The undergrad Huskie JV Pups showed considerable promise in winning 10 out of 16 contests. Coached by John Shields and Morton Remick, the JV Pups became the delight of the local fans



through their spirited play. Basketball insiders tab this a team to watch, should they be able to play as a unit for another year or two. Now mostly freshmen, the Pups will be dangerous.

**GIRLS' BASKETBALL . . . .** With only one girl returning from last year's fine girls' basketball team, coach Malaka Russell was perforce content to have a building year. Winning 4 and dropping 5, the MCI girls, with their strong reserve of freshmen, sophomores, and juniors, will certainly be regional contenders next fall. Eleven freshmen, among other underclassmen, managed to stay either with the Varsity or JV teams. The JVs gained considerable experience in winning one contest and dropping 3.

**SKI TEAM . . . .** A total lack of skiing snow until well into February put a damper on the high hopes of coach Byron "Bud" Dow for a long and eventful season. With more than 30 answering the first ski-call, prospects appeared good. But the prolonged lack of snow on the Pinnacle practice slopes made formal practice sessions an impossibility. The ski team did, however, take second place in the State Class "B" Meet at Madawaska, and finished sixth in the Class "A" competition at Rumford.

**RIFLE TEAM . . . .** A good interest in rifle competition gave coach Frank Haseltine an opportunity to divide his shooters into four groups of boys, and one team of girls. With assistant Blake Bartlett, coach Haseltine arranged a series of inter-club matches, student-faculty shootoffs, and membership in the Maine Junior Postal League.

**INTER-DORM COMPETITION . . . .** The school this year will award trophies to dormitories and prizes to individuals for outstanding accomplishment in five types of activity. Organized by Director of Athletics and Recreation, Roderic L. Smith, mid-winter interdormitory competition has been keen in basketball, bowling, cribbage, pool, and chess.



The girls' basketball team, under the direction of Coach Russell, won 4 and dropped 5. With only one senior on this year's squad, prospects appear good for next season.



Eligibility regulations hurt coach Bob Boulrisse during his first year of coaching the undergrad Huskies. The Huskies worked hard to turn in a 5-10 record for the season, but gained some consolation in the fact that they probably had the smartest manager in Central Maine schoolboy ranks. Preston Carter, the son of Bertha Wheeler Carter '17, is valedictorian for the Class of 1962.



The undergrad Huskies JV "Pups," under the direction of John Shields, have been tabbed as a group to watch. Boasting a proud 10-6 record for their season, the youngsters have shown great potential.



Coach Verge Forbes and his basketball Preppers turned in another winning season for MCI, 11-6 for their tough schedule. These Preppers were all from the state of Maine.



## 1961 Spring Sports

As the *Alumnus* for 1961 could not include news of the various spring sports for that year, perhaps a brief mention of them should be made at this point.

### POSTGRADUATE BASEBALL

1961 . . . . Coach Rod Smith faced a real game-to-game problem of fielding nine men. With one of the thinnest benches in MCI's history of the sport, Rod managed to salvage one game, the finale of the season, against Hebron in 10 innings, 4-3. Even that game might have gone the other way had not a swallow taken off with the crack of the bat directly toward the Hebron third baseman, with bases loaded in the last of the tenth inning. Puzzled as whether to catch the bird or the ball, the distracted infielder let the ball roll into center field, handing MCI the well deserved win.

### UNDERGRAD BASEBALL 1961

. . . . The baseball Huskies, under the direction of Al Card, won 5 and lost but 2, both to Kents Hill. Defeated were Waterville (2), Unity-Freedom (2), and Higgins Classical Institute. Coach Card thoughtfully saw that his underclassmen got plenty of work, keeping an eye on the spring of 1962.

### GIRLS' SOFTBALL 1961 . . . .

Coach Russell's charges provided interesting action during the long spring afternoons. In five games the Varsity girls scored 90 runs; unfortunately the opposition scored 107 runs during the same 5 games. The Varsity record: 2 wins, 4 losses. The games were certainly colorful and attracted good crowds, particularly from the dorm-boy set. The JV softballers did slightly better for their abbreviated season, winning two and dropping only one. One victory was over the Farmington JVs, to the horrendous tune of 39 to 6.

**TRACK 1961 . . . .** A wet, late spring caused cancellation of four of the scheduled meets lined up for Norbert Young's track and fieldmen. The State Meet, long a showplace for MCI



Coach Byron "Bud" Dow was greatly hampered by a large lack of snow on the local practice slopes, but still managed to place second in the State Class "B" Meet at Madawaska.

track talents, was rained out and not rescheduled. MCI defeated Skowhegan and Kents Hill, and lost to Bangor High and the Maine Freshmen.

\* \* \* \*

Note: Coach Young wishes to express heartiest thanks to those former MCI trackmen who so generously donated toward new hurdles.

**SPRING GOLF 1961 . . . .** Golf coach John Dana, assisted by Peter Bradshaw, who is also our school photographer, led the golf team to a 4-1-2 record. The MCI swingers beat Brewer High School twice and Maine Maritime Academy twice, bowing to the freshman clubs from Maine, Colby, and Bowdoin.

## Roy U. Sinclair Heads M.E.S.C.



Roy U. Sinclair, a member of the Executive Committee of the Board of Trustees, and a faculty member and Dean at MCI 1926-42, is now chairman of the Maine Unemployment Security Commission. Appointed by Governor John H. Reed last fall, Mr. Sinclair will serve a six year term.

He served four terms in the State Legislature, three of them in the Senate. His legislative posts included chairmanships of the Appropriations Committee, the Legislative Research Committee, and the Governor's Budget Advisory Committee. He was also a member of the Taxation Committee and the Committee on Interstate Cooperation.

The Maine Employment Security Commission administers the State Employment Service and the Unemployment Insurance programs. The principal function of the Employment Service program is that of matching all known job opportunities with available workers through the facilities of public employment service offices. Maine has 14 such offices, located in Augusta, Bangor, Bath, Biddeford, Calais, Ellsworth, Lewiston, Portland, Presque Isle, Rockland, Rumford, Sanford, Skowhegan, and Waterville.

Roy Sinclair's scores of MCI friends, former students and associates wish him all success at this responsible and important new post.



# CLASS NOTES

In response to numerous requests by our "Senior" Alumni, the *Alumnus* is publishing the names of all Alumni presently carried in our files from 1888 through 1899. We sincerely hope that the following list will be of interest, and of benefit in locating former classmates.

## LIVING ALUMNI FROM CLASSES PRIOR TO 1900

### 1888

**Fred Salley**, 1221 Palm Street, Clearwater, Florida

### 1891

**Caro Murray Guimond**, c/o E. F. Dana, 57 Exchange Street, Portland, Maine

### 1892

**Florence Young Bean**, 116 Academy Street, Poughkeepsie, N. Y.  
**Maude Brackett Hyde**, 198 St. Paul Street, Brookline 46, Mass.

### 1893

**Annie Gilman Crowell**, R.F.D., Corinna, Maine  
**Isabel Lothrop Vaughn**, 50 Forest Avenue, Everett, Mass.

### 1894

**Benton Lenfest**, 16 Summer Street, Pittsfield, Maine  
**Elizabeth Walker**, Batchelder Elms Nursing Home, Burnham, Maine

### 1895

**Bertha Maxfield Corey**, Beaconfield Hotel, Brookline, Mass.  
**Annie W. Horne**, 77 Main Street, Fairfield, Maine  
**Effie M. Horne**, 18 Union Street, Hallowell, Maine  
**Waldo T. Merrill**, Sidney, Montana

### 1896

**Nellie Crabtree Foss**, 4415 Panorama Drive, Washington 21, D. C.  
**Alice Haslam Groves**, 45 Rhodes Avenue, Riverside, R. I.  
**Parker S. Littlefield**  
**Mellie Robertson Merrill**, Detroit, Maine  
**Maude Munroe Mudgett**, 1 Munroe Road, Lexington, Mass.  
**Mertie Hanson Palmer**, 145 S. Main Street, Pittsfield, Maine

### 1897

**Myrtie L. Andrews**, Ashland, Maine  
**Ralph W. Davis**  
**Ethel Vickery Hambleton**, 32 Florence Street, Natick, Mass.  
**Annie Maddocks King**, Winn, Maine  
**Harry Patten**, R.F.D. 5, Brewer, Maine  
**Dr. Carl D. Sawyer**, 184 Waterman Street, Providence 6, R. I.

### 1898

**Ina Lancaster Allen**, 10 Hathorn Street, Pittsfield, Maine  
**Lelia Smith Armstrong**, 26 S. Dale Street, Apt. 306, St. Paul 2, Minn.  
**Abbie Buck**, 102 Sewall Street, Augusta, Maine  
**Ina Guptill Easterbrooks**, 234 Webster Street, Manchester, N. H.  
**Linwood Eastman**, Clinton, Maine  
**Allison Howes**, R.F.D. 2, Box 106, Pittsfield, Maine  
**Mertie Sinclair Kramer**, Santa Anita San., 5522 N. Gracewood Avenue, Temple City, California  
**Nina Spearin Loder**, 2 Somerset Street, Bangor, Maine  
**Lona Perkins Ransden**, High Street, Hotel Ardmore, Brockton, Mass.  
**Ena Tucker Trumbull**, New London Turnpike, S. Glastonbury, Conn.

### 1899

**Harry L. Bradford**, Wiscasset, Maine  
**Harry Cornforth**, Box 216, Pittsfield, Maine  
**Nellie Moriarty Curtis**, Stetson, Maine  
**Blanche Rolfe Mathews**, 8 Depot Road, Falmouth, Maine  
**John Abbott Sinclair**, 120 S. Main Street, Penacook, N. H.  
**Helen A. Thomas**, 51 Concord Street, Malden, Mass.  
**Callie Butler Tibbetts**, Newcastle, Maine.

## THE TEN LEADING CLASSES

### By percentages

1883	100%
1891	100%
1900	75%
1905	71%
1903	66%
1907	53%
1892	50%
1893	50%
1895	50%
1911	50%

Interim Report to April 15, 1962.  
(Fund Year ends August 15, 1962.)

## FROM CLASS OF 1882 THRU 1899

**1882**—The *Alumnus* regrets to report belatedly the death of **Caro M. Porter**, five years ago this August, at which time, had she lived another month, she would have attained her 95th birthday. She had lived the last 35 years of her life with her daughter-in-law, Mrs. Clifton H. Curtis, of West Newton, Massachusetts. Mrs. Curtis has written that "Mother" Curtis' life centered around her family and that she was dearly loved by all who knew her.

**1891**—The address of **Caro Murray Guimond**, for the information of her many friends, is now c/o E. F. Dana, 57 Exchange St., Portland, Maine.

**1892**—The *Alumnus* regrets to report that mail to **Hattie French Peabody** in Lincoln, Maine, has been returned marked "Deceased." There are no details.

Our new address for **Maude Brackett Hyde** is 198 St. Paul St., Brookline, Mass.

**1895**—**Annie W. Horne's** new address is 77 Main St., Fairfield, Maine.

**1897**—The *Alumnus* regrets to report that mail to **Bessie Kimball Burrill**, Portland, Maine, has been returned marked "Deceased."

**1898**—**Abbie Buck** may be reached by writing c/o W. G. Kennedy, Hale & Hamlin, Ellsworth, Maine.

Our latest address for **Ena Tucker Trumbull** is New London Turnpike, S. Glastonbury, Conn.

**1899**—The new mailing address for **Blanche Rolfe Mathews** is 8 Depot Rd., Falmouth, Maine.

The *Alumnus* regrets to announce the death of **George Arthur Appleby** on December 3, 1961, following serious burns suffered from fire. He had been a resident of Pittsfield since 1902, and had been employed for many years at the Ames-Baldwin Company in Palmyra, retiring in 1947. He is survived by his wife and a brother.

The *Alumnus* regrets to report the death of **Lilla Mae Cargill**, in March 1962, at a Lewiston hospital after a prolonged illness. She is survived by a daughter, **Geraldine Cargill Soper '33**, two grandchildren and three great grandchildren.

### 1900

#### Class Agent

**EARLE N. VICKERY**  
Libby Street, Pittsfield, Maine  
(For all Classes, 1900-'04)

New addresses: **Ethel Morrell Hooper** has changed her address from Exeter, N. H., to Middle Road, Stratham, N. H.

A nice letter was received from **Ethel Walker Fitts**, Storrs Road, Storrs, Conn. Mrs. Fitts' family moved from Pittsfield the year that she graduated from MCI, but she is still very much interested in the old home town. She has received a recent letter from old classmate **Herman Mansur**, in which Herman expressed hope for a class reunion. Mr. Mansur was prominent among the large group attending the annual Alumni Homecoming last August, and at that time presented the Alumni Association a picture of the first football team at MCI, of which Herman was a member. The picture is prominently featured in the memorabilia display in the Powell Memorial Library.

### 1901

New addresses: **Minnie Porter** and her sister **Amy Porter '05** have moved from Pittsfield, Maine, to Skowhegan. Their address is Box 216, Skowhegan, Maine.

### 1902

The *Alumnus* regrets to report the death of **Alice Dow Bessey**, formerly of 7 Park St., Waterville, Maine, on July 6, 1961. She is survived by her husband, Earle D. Bessey.

### 1903

The *Alumnus* regrets to report the death in March 1961, of **Fred J. Higgins** of Bath, Maine. Mr. Higgins served for many years as a clerk at the Bath Iron Works shipbuilding corporation. He is survived by his wife, Ethel L. Higgins, of 80 Lincoln St., Bath, Maine.

The latest winter address of **Hugh Goodwin** is 2163 30th Ave., North, St. Petersburg 13, Florida. Mr. Goodwin spends his summers in North Berwick, Maine.

### 1904

The Alumni Association has received a gift in memory of **Eva Josslyn Atwell** from her children: **Winifred Atwell Nordmark '27**, **Bert Atwell '23**, and James Atwell. Mrs. Atwell had long been a loyal supporter and friend of MCI.

The *Alumnus* extends sympathy to **Louida Simpson Ridlon** on the death of her husband, Horace. Mr. Ridlon is also survived by a brother, **Dr. Magnus F. Ridlon '17** of Bangor. Mrs. Ridlon now resides at 22988 Brenford St., Woodland Hills, California.

Class agent **Earle N. Vickery** has been recently honored at Past Masters' Night of Meridian Lodge A.F. & A.M. at Pittsfield's Masonic Hall. A past master of the local lodge, Mr. Vickery was presented a 50-year pin. He is also past high priest of Ira Berry Chapter and past district deputy of the 22nd Masonic District. Honored at the same ceremony was **William Coffin '33**, formerly of Pittsfield, now residing in Augusta.

### 1905

#### Class Agent

**AMORETTE PORTER**  
Box 261, Skowhegan, Maine

New addresses: **Ethel M. Reed** has moved from Summit, N. J., to 50 Bridge Ave., Bay Head, N. J. **Amy Porter** is living now





MCI Trustee Senator Margaret Chase Smith was prominent at a Washington reception honoring the orbital flight of Lt. Col. John H. Glenn. With Senator Smith are astronauts Captain Grissom, Col. Glenn, and Commander Shephard. Senator Smith is a member of the Aeronautical and Space Sciences Committee, as well as the Appropriations and Armed Services Committees, all instrumental in Col. Glenn's historic achievement.

in the Redington Memorial Home in Skowhegan, with her sister **Minnie Porter '01** and friend **Lena Marsh**.

**Flora Lucas Blaisdell**, Goffstown, N. H., writes enthusiastically of a European trip enjoyed by her son, Fred, and his wife, during which they visited nine countries while on an inspection trip for the government. Flora seems to have made a good recovery after surgery a year ago.

The Alumnus is sorry to report that **Adah Clark Brown**, 760 East 11th St., Erie, Pa., is quite crippled with arthritis. Her visits to Pittsfield and MCI are missed by her many friends. She has been a loyal alumna.

Newport's Dr. **George I. Higgins** continues to be prominent in the news. His latest efforts have been in the shaping and planning of the Sebasticook Valley Hospital, now under construction.

The Class of 1905 is proud, too, of the **Albert and Olive ('04) Partridge** gifts to MCI in the past year.

From the snowy, windy plains of Lundbeck, Alberta, **Mary Webster Patton** writes of frigid temperatures. She has an interesting family.

**Zana Prescott**, 1307 E. 41st St., Seattle 5, Washington, is treasurer of the state's Retired Teachers' Association. She has the task of receiving dues from 1200 members and keeping the filing cards of names and addresses up to date.

**Ida Tibbetts Schenk**, in Byfield, Mass., has a wonderfully interesting family of children and grandchildren. She and Bill are supposed to be retired, but he keeps busy with old clocks, and "Tib" is teaching a group of pupils who need special help and doing other work for her church and community.

**Mildred Schermerhorn**, 508 E. Second St., Jamestown, N. Y., writes that she is now very well, but is now content to stay comfortably at home in slippery weather, knitting afghans and crocheting pixie caps. Says it is good therapy!

**Mary Sweetland**, 26 Linden Ave., Cranston, R. I., is still busy creating poems for her church and writing the letters so welcomed by her friends. The old asthma still keeps her close at home.

Mrs. Charles Magoon is still at the home that they made in Mesa, Arizona. She is still interested in MCI which meant so much to her late husband, **Charles**.

**Bernard A. Landman**, son of professor and Mrs. Landman, born that magic spring of 1905 and styled the '05 "Class Baby," came back in October with his wife to see MCI and Pittsfield, and any old friends whom he might find. He had not been back since he was eight years old. Upon finding that the sisters Porter had moved to Skowhegan, the Landmans traveled to Skowhegan for a visit. With friend **Lena Marsh**, the Porters and Landmans enjoyed a jolly evening, recalling old incidents and old friends. Bernard is postmaster at Wolfboro, N. H., a major reason for his being unable to attend '05 reunions, as the tourist business is at a peak during August. Perhaps this summer, Bernard!

The Alumnus regrets to report that mail to **Lily Price Hildreth** has been returned marked "Deceased." There are no other details.

On April first **Adah Clark Brown** moved into a nursing home at 3503 Hazel Street in Erie, Pa. Hearing from readers of this *Alumnus* would certainly brighten the days.

## 1906

Class Agent

**HARRY W. ROWE**

374 College St., Lewiston, Maine

**Esther Morrison Dale**, 938 Middle St., Bath, Maine, was accepted into the Mayflower Society at the annual meeting of the organization November 21, 1961, at the Lafayette Hotel in Portland. She is ninth in succession from William Bradford, a Pilgrim Father and second governor of the Plymouth Colony.

**Vernon Shorey** of 15 Peltoma Ave., Pittsfield, Maine, has been in poor health during the past year and has been confined to his home for the winter. He would appreciate any notes or letters from his old friends and classmates.

Recently returned from Florida is **William Smith** of Newport, Maine. Mr. Smith, retired from his farm equipment business, spends much of his spare time, whether in Florida or Maine, enjoying outdoor activities, particularly fishing.

**Wallace L. Barney** has also returned to Maine from a winter in Florida. He owns and operates a drugstore in Jackman, Maine, and continues an active interest in town affairs.

## 1907

Class Agent

**FREDERICK R. WEYMOUTH**  
R.F.D. No. 2, West Valley, N. Y.

New addresses: Our latest address for **Sarah Herrick Saville** is 139 Rockwood Drive, S. San Francisco, Calif.

**Ida Cromwell Davis** writes that she had a very serious accident in June 1961, and spent five weeks in a hospital, unable to walk. Through exercise and patience, and aided by the prayers and encouragement of her pastor and friends, she is now able to walk without support. She has sold her home, and now has an apartment at 214 Main St., Sanford, Maine, near the church and stores. Her friends feel that she has shown exceptional courage during this very painful experience.

Friends of **Walter Sargent** will be pleased to learn that he is still very active, and is enjoying himself as a car salesman in Littleton, Mass.

Dr. **Clair E. Turner** has been appointed to a WHO-UNESCO consultant post for a project to promote health education in the schools of the member countries of the United Nations. His office is at the UNESCO headquarters, and he and Mrs. Turner departed for Paris in January 1962. Dr. Turner is Professor Emeritus of Public Health at the Massachusetts Institute of Technology, and a resident of Arlington, Massachusetts.

The Alumnus regrets to report the death of **Walter E. Mathews** in Orlando, Florida, in August 1961, after a long illness. Mr. Mathews was born in St. Albans, Maine, and upon graduation from MCI attended Bates College and the University of Maine Law School. He practiced in Oakfield and Ft. Fairfield, Maine, and served for one term in the Maine Legislature. He served for more than 25 years as an attorney for the Employers Liability Assurance Corp., with offices in New York. He moved from New York to Florida in 1951. He is survived by his widow, Mrs. Caroline C. Mathews, and two nephews.

**Leora Prentiss** was one of six recipients of Colby Bricks at the 140th Colby commencement weekend. The Colby Bricks are emblematic of outstanding service to the college.

## 1908

Class Agent

**LEO BLAISDELL**  
East Franklin, Maine

The Alumnus regrets to report the death of Dr. **Philip F. M. Gilley, Sr.**, at Southwest Harbor in April 1961. Dr. Gilley, a trustee of Maine Central Institute, was a former president of the Maine Dental Association. Surviving are his widow, Eunice Palmer Gilley, two sons, a sister, seven granddaughters, several nieces and nephews. Dr. Gilley is remembered as a fine athlete while at MCI, as well as a superior scholar.

A plaque honoring 50 years of service to the Democratic Party was recently presented to **Merton Larrabee**, during a meeting of the Somerset County Democratic Committee at Pittsfield. The presentation was made by Owen Hancock, chairman of the state Democratic party.

## 1909

Class Agent

**CLARENCE A. ROBERTSON**  
227 Prospect St., Portland, Maine

**Hazel Cowing** is still confined to the Sargent Nursing Home, 20 Washington St., Brewer, Maine. She has been ill for several years and would greatly appreciate hearing from old friends and classmates.



The Alumnus regrets to report that mail to **Ina M. Moulton** of Hartland has been returned marked "Deceased."

**Iza Carney Mathews** is still residing in Berwick. A widow, Mrs. Mathews reports that a son, Robert E. Mathews, was killed while serving as a naval aviator in World War II. Her son, Philip J. Mathews, has recently completed forty years in the real estate and insurance business, and is now serving his second term in the Maine Legislature.

**Arlo F. Barton**, after serving the public for more than 50 years as postmaster and general store proprietor at Bradley, Maine, has retired. Arlo and his wife Laura are both in good health and are enjoying their new-found leisure. The F. L. Barton store in Bradley started doing business in 1849, and has continued in the Barton family for 3 generations. The postoffice position has been in the Barton family since Civil War days with the exception of one 2-year period, 1893-95. Arlo was recently awarded a fine watch from a Bangor wholesaler as first prize for retailing groceries over a longer period than any other customer.

1910

*Class Agent*

**HAZEL YOUNG GRINNELL**  
Newcastle, Maine

New addresses: **Lelah Gilman Smith** of Pittsfield now resides at 14 Manson St. Her former address was 40 Somerset Ave., Pittsfield, Maine.

**Edith Butler Bates** is to be commended on the fine achievements of her large family. Her son, Kenneth, is with Norton Abrasives in Worcester, Mass.; a daughter, Mrs. Antoinette Brown, is the wife of Dr. C. W. Brown, also of Worcester; daughter Mrs. Winifred Manson is a secretary in the office of the Cumberland County Clerk; son Arthur E. is an inspector of missile installations for the Air Force in Kansas; daughter Mrs. Afton Witham is guidance director at Wiscasset High School, and daughter Mrs. Jean Hilton is the wife of the principal at Wiscasset High School.

1911

*Class Agent*

**EARLE A. HARDING**

2301 Ridgeway Road, Wilmington 5, Del.

New addresses: **Earl Hussey** now resides at 96 Wilmot St., Manchester, N. H.

The Alumnus regrets to announce the death of **Earle Ames** of Homestead, Florida, sometime in 1960-61. There are no details.

**Clement A. Lyon** was honored at the New Hampshire Hotel in Concord, N. H., on the occasion of his retirement from State service as Director of the Division of Markets and Standards in the New Hampshire State Department of Agriculture.

Energetic Class Agent **Earle A. Harding** has traveled extensively during the past year, and has visited several former members of the MCI faculty who taught more than 50 years ago. They include Dr. Frederick H. Martin, who taught science and coached the debating team; Mrs. Ellen Packard Kay, teacher of Latin and 1911 Class Teacher; Mrs. Vivian Laughton James, instructor in elocution; Miss Lura Wakefield who taught English; and Miss Grace Thompson, who taught algebra as one of her assignments. Dr. Harding found each of these former teachers in good health, and keenly interested in everyday events and happenings in his community.

**Florence Blaisdell Sweet** has retired from teaching after 32 years of service. Mr. Sweet passed away in October of 1961. Their only daughter is a dental assistant in Bangor.

# CLASS HONOR ROLL

The following classes were among the top ten in total contributions, number contributing, and percentage contributing for the 1961-62 Fund Year:

1905

1911

The greatest increase in class gift was recorded by

1911

The greatest increase in number of contributors was recorded by

1905

1914

1916

Interim Report to April 15, 1962.  
(Fund Year ends August 15, 1962.)

1912

*Class Agent*

**HAYWARD T. PARSONS**

Industrial Bank Bldg., Providence, R. I.

New addresses: **Paul U. Harris**, Damon Heights Pl., Niantic, Conn.

**Owen Gould**, R.D. No. 3, Box 188, Pittsfield, Maine

**Guy Twitchell**, Box 278, Winterport, Maine

The Alumnus was pleased to hear from **Olive Gray Gilman** of Porter, Maine. Mrs. Gilman has a daughter, Dorothy Gilman Locke, and grandchildren, Paul Locke 12, and Patricia Locke 8. Dorothy Locke is a 1942 graduate of the University of Maine and served for several years as 4-H Club agent for the Maine Extension Service. Dorothy is now a saleslady for "Ye Olde Wool Shop" at Kezar Falls.

1913

*Class Agent*

**NORRIS FRIEND**

Newport, Maine

New addresses: **Bessie Sprague Small**, R.F.D. No. 3, Highland Lake, Maine

**Roland L. Eaton**, 206 Jackson Blvd., Deerhurst, Wilmington 3, Del.

**Arthur Dole**, recently retired railroad conductor, and **Marion Peabody Dole**, of Hermon Center, Maine, while en route to California visited their daughter **Priscilla Dole Wickett '55** at Adelphi, Maryland. They also visited **Royal** and **Vida Prilay Sherburne** in Takoma Park, Md.

**Myron C. Peabody** has retired as president of the Farm Credit Banks of Springfield, Mass., a position that he has held since 1952. He has also served as president of the Federal Land Bank, the Federal Intermediate Credit Bank, and the Springfield Bank Cooperatives. In June 1960, Mr. Peabody received an honorary Doctor of Laws degree from the University of Maine.

**Everett S. "Shep" Hurd**, as a member of the Board of Directors of the National Sporting Goods Association, attended the association's 1962 convention in Chicago. Mr. Hurd is president of Dakin Sporting Goods Co., Bangor.

1914

*Class Agents*

**FRANK and BETH RUSSELL McCAUSLAND**

72 Rawson Road, Wollaston, Mass.

New addresses: Our Class Agents report that **Beulah Nickerson Hawes** now resides at 2023 Willingham Rd., Rt. No. 7, Dallas, Texas, and that **Claire Lindscott Tower** may be reached at P.O. Box 1447, Williamsburg, Virginia.

**Cecil Thurston's** summer address is 69 N. Main St., Woodstown, N. J., and he may be found during the winter at 751 S. Federal Hwy., Pompano Beach, Florida.

The Alumnus regrets to report the death of **Paul M. Stinchfield**, who died on January 5, 1962, in California while visiting his sister, Sara Stinchfield Hawk, a teacher at MCI from 1909 through 1911. Mr. Stinchfield was a pilot in the First World War, and until recently had been employed at Atlantic City, N. J. He is survived by a son, Jack, in the Marines, a daughter, Patricia, married and living in California, and his sister, Mrs. Hawk.

Expecting to retire this fall after 41 years in the postal service, is **Ray Marsh**, 108 Alba St., Portland, Maine. He and his wife expect to spend at least some time in their extensive garden. Both children are married and living abroad. Their son, John, is attached to the American Embassy in Amman, Jordan, and daughter Miriam and family are with the Armed Forces in Germany.

Recently a patient at the Togus Veterans' Administration Hospital was **Roland L. "Hi" Greene**. "Hi" is well remembered for his athletic prowess at MCI. His many friends wish him a speedy recovery.

1915

*Class Agent*

**HOMER F. RAY**

425 Old Shawnee Road  
Milford, Delaware

New addresses: **Leslie L. Black** has a winter address of 1100 Rd. 84, Fort Lauderdale, Fla. Summers: Box 182, Boothbay Harbor, Maine

**Beverly Seekins Sweet**, Kosko Lane, Naugatuck, Conn.

The Alumnus regrets to report that mail sent to **George Case** in Lewiston has been returned marked "Deceased, Aug. 21, 1961." There are no other details.

It is with regret that the Alumnus reports the death of **Earl Robertson** of St. Albans, Maine, in 1959. There are no details.

1916

*Class Agent*

**HELEN LIBBY RAY**

425 Old Shawmut Road  
Milford, Delaware

New addresses: **Jesse Bates**, 2516 San Jose Ave., Alameda, Calif.

**Thelma Nason Palmer** and husband, **Raymond '20**, are still at R.F.D. No. 1, Corinna, Maine. The Raymonds have one son, Robert E.

The Alumnus regrets to make a belated report of the death of **Hazel Larrabee Whitten** in September, 1960, in Newport.

To complete its files for the Class of 1916, the Alumnus would welcome any information regarding the following members: **Harry C. McKenney**, **Ruby Dodge Sawyer**, **Stella Salisbury Seekins**. A note to the MCI Alumni Association will be appreciated.

James E. Bearce, the son of **Ruth McCausland Bearce**, is supervisor of Unit Control at the Boston Gear Works, in Boston. Ruth and Byron are still at 113 Rawson Road, Wollaston 70, Mass.

Recently retired from the woolen business is Gordon R. Park of Sabattus. Son **Robert Park '48** was MCI football captain in 1947, and son **James Park '49** was football captain in 1948. A real football family!

**Edwin "Ned" Richardson** has retired from more than thirty years of teaching in Maine and is now residing at 69 Pleasant St. in Rockland, Maine.



1917

*Class Agent*

LYDIA BICKFORD SUSI

37 Lancey St., Pittsfield, Maine

New addresses: **Marie E. Menard**, 400

W. 54th St., New York 19, N. Y.

**Chester L. Nelson**, 62 Liberty St.,  
Manchester, N. H.

**Agrandece L. Healey**, Shelton Hall, 91  
Bay State, Boston 15, Mass.

**Julian Cummings** reports that he still lives in West Enfield, Maine; that he has been married for 32 years and has two daughters and a son, 4 grandsons, and one great-granddaughter. Mr. Cummings is a night foreman in the finishing room of the Pine Tree Tanning Co., of Howland. He sees classmate **Gilbert Boyce** of Carroll occasionally, and reports that Gilbert operates sporting camps during the summers.

Recently touring the West Coast, including California and Washington, was **Earl O. Whitney** of Newport.

The *Alumnus* regrets to report the death of **Russell L. Tarbell**, in June 1961, at Fitchburg, Mass., after a long illness. He enlisted in the Army in World War I and saw service in France. For the past ten years he had been employed by the Massachusetts State Highway Engineers as a land surveyor.

1918

*Class Agent*

HELEN CHILDS SHOREY

R.F.D., Savage St., Southington, Conn.

New addresses: **Harry Belyea**, 543 Main St., West Yarmouth, Mass.

**Alice Townsend Hart**, 54 Main St.,  
Newport, Maine

**Ervena Goodale Smith**, 521 Fifth Ave.,  
Rm. 3510, New York 17, N. Y.

**Harry P. Brann**, 307 Ardmore Ave.,  
Trenton 9, N. J.

Your Alumni Office carries far too many members of '18 on its "missing" list. Drop a note to the Alumni Association, please, if you have information regarding the following: **Clare E. Bean**, **Sidney A. Carter**, **William J. Davis**, Mr. and Mrs. **William Grant (Marie Plummer)**, **Ruby Gray**, **Ina Gillespie Hamilton**, **Helen Bragdon Martin**, **Marguerite McFadden**.

**Erma Holden Oseland** is still living in Akron, Ohio. A son, **Zimri C. Oseland, Jr.**, is employed by the Goodyear Tire and Rubber Co., at Akron.

1919

*Class Agent*

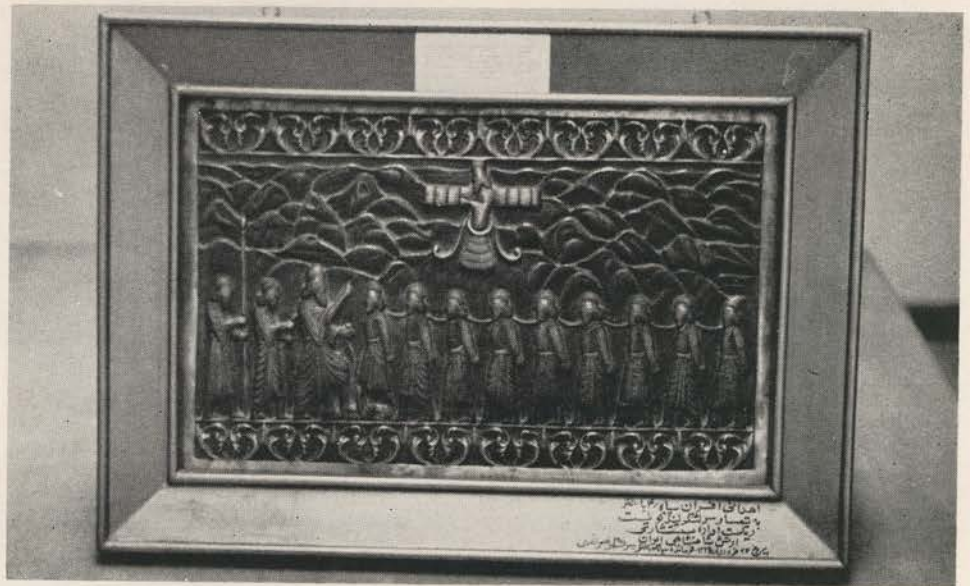
RUTH WHITTEN PALMER

85 Silver St., Waterville, Maine

New addresses: **Dr. Arthur Moulton**, 89  
Orchard St., Auburn, Maine.

The *Alumnus* regrets to report the death of **Marjorie Patten Small** at Skowhegan, in September 1961. Mrs. Small had long been a loyal friend of the school.

The *Alumnus* regrets to report the death of **Mildred Bragdon Higgins** of Sidney, at a Manchester nursing home after a long illness. Mrs. Higgins was a member of the First Church of the Nazarene, Bangor, and was for many years a member of the Pittsfield, Maine, Grange. She formerly lived in Troy and Bangor, moving to Sidney a year ago. Survivors include her husband **Leon**, sons **Alton L. Higgins '41** and **Robert M. Higgins '43**, daughters **Marie A. Graves '41**, of Sidney, **Maxine D. Ayers '45**, and **Jeanette Walker '49**, both of Augusta, and a sister, **Goldie A. Bryant '24** of Madison, Maine.



This bronze bas-relief, commemorating a battle triumph of the Great Darius, is part of a gift to the Powell Memorial Library from Maj. Gen. (Ret.) Roy E. Lindquist '25. The plaque has been hung in the Persian Room of the library with other gifts from General Lindquist.

**Ellen Millett Boomer**, in response to a request for information for the *Alumnus*, writes, "Married in 1921, I have, with the exception of two years spent in Oregon, lived winters in Auburn and summers at Belgrade Lake, where we have owned and operated a Family Recreational Camp since 1929. For the past ten years we have been in Florida a few months during the winter." It sounds like a great life, Ellen!

1920

*Class Agent*

(The post is open for candidates. A good class, 1920, and deserves a good agent. Volunteers please contact your Alumni Office.)

New addresses: **Myrtle Gerald Swett**,  
153 Summit St., Portland, Maine.

**A. Stewart Varney** and **Erma Johnson Varney '22** are still at Bridgton, where Stewart has just completed 25 years of service with the Central Maine Power Company. He is a foreman of the Company's service department. Erma is now in her 18th year as a teacher in Primary A, Grade 1, in the Bridgton school system. The Varneys have a son and two grandchildren, ages 2 and 4.

Does anyone from '20 know the whereabouts of **Erma Morey Corey**, **Roy B. Spaulding**, or **Hiram White**? If so, will you please advise the Alumni office?

1921

*Class Agent*

WILLIAM S. SILSBY

4 Union St., Ellsworth, Maine

New addresses: **Fred H. Fuller**, 8 Bullock St., Brattleboro, Vt.

**Evelyn Leathers Damon**, 36 Howard Ave., Newington 11, Conn.

**Christine Colson Witham** was married in September to **Elmer E. Mayhew** of Bangor. Mr. and Mrs. Mayhew make their home at 22 Summer St. in Bangor.

The *Alumnus* is proud to point out that Class Agent for 1921, **William S. Silsby**, has been appointed to the State Superior Court by Governor John Reed. This marks another forward step in Bill's career of distinguished public service.

Presently a member of Maine's 100th Legislature, and a candidate for reelection

in the June primary, is **Galen Swett** of Howland. Galen, now retired, has four children, Donald, a salesman; Clifford, a U. S. Postmaster; Barbara, a secretary; and Maxiene, a housewife.

**Harold Durward Bartlett** is a planner and estimator at the Portsmouth Naval Shipyard. Harold, married to the former **Pearl Fernald**, has two sons, **Harold, Jr.**, with the General Electric Missile Program at Plattsburg, N. Y., and **Philip Lee Bartlett**, a research chemist for the DuPont people at Wilmington, Delaware.

1922

*Class Agent*

MARGUERITE O'ROAK

110 Lisbon St., Lewiston, Maine

New addresses: **Wilbert H. Cook**, Box  
1369, Boston 4, Mass.

**Glenis Humphrey Flewelling**, 146  
Murray St., Portland, Maine

The *Alumnus* was sorry to hear that **Leonice P. Moody** expects to be confined to the Rutland State Sanatorium at Rutland, Massachusetts, for some time. Leonice has an injured leg as the result of a fall, as well as multiple sclerosis. Letters would be most welcome during this confinement.

Wanted, addresses for or information concerning: **Frank Carter**, **Stanley Fuller**, **Catherine Cunningham Squillacot**.

**Wilbert Cook**, who has had a most interesting career in the field of electronics, is now studying Italian in preparation for an important assignment in Rome. His address is Box 1369, Boston 4, Mass.

1923

*Class Agent*

RAYNOLD L. FULLER

23 Sylvan Rd., South Portland, Maine

New addresses: Mr. and Mrs. **Stanley Betts (Helen Pooler)**, 124 Kimberly Dr., Ventura, Calif.

**Bryant Anderson**, 384 Boylston St.,  
Brookline, Mass.

**Bert Atwell**, 5 Delaware Ave., Milford,  
Delaware

The *Alumnus* regrets to announce the death of **Jesse P. Fuller** on January 19, 1962, at his home in South Portland. Mr. Fuller, a former majority leader of the



Maine House, had recently been appointed chairman of the Governor's Advisory Committee on Education. A representative of the MacMillan Publishing Co., Mr. Fuller represented South Portland in the Legislature from 1951 to 1957. He was a teacher as a young man, and was superintendent of schools in Liberty and Milo before joining the textbook publishing house. He was a former chairman of the South Portland Board of Education, a president of the city's Lions Club, and was a Mason and a Shriner.

## 1924

### Class Agent

**E. BURNELL OVERLOCK**

83 Oakdale Ave., Pawtucket, R. I.

New addresses: **Glenice Stuart Emerson**, 29 Tucker St., Portland, Maine.

**Genevieve Weeks Ireland** has just completed her 20th year of membership in the Girl Scout movement. She has served the membership in many capacities, and is presently District Chairman of the Montachusett Council. With daughters Joyce, Janet and Judith all married, Genevieve has seven grandchildren.

**Ruth Palmer Harbiline** has been elected regent of the Elizabeth Pierce Lancy Chapter DAR at Pittsfield, Maine. Other officers elected were **Alma Patten**, '09, secretary and treasurer; **Annie Hanson Palmer**, '96, council; **Annie Millett Merchant**, '12, council; **Ina Lancaster Allen**, '98, courtesy. **Beatrice Palmer Frederick**, '25, was welcomed as a new member.

## 1925

### Class Agent

**MIRIAM McMICHAEL ROBINSON**

46 Lafayette Rd., Newton Lower Falls, Massachusetts

New addresses: **Ina Hubbard Jones**, R.F.D. No. 2, Winsted, Conn.

**Esther S. Bussell** is now Director, Reading Clinic and Student Teaching, at Lyndon Teachers College, Lyndon Center, Vermont.

## 1926

### Class Agent

**RENE DEVOE**

109 S.W. 41st Ave., Miami, Fla.

New addresses: **Norman N. Thurlow**, 9A Love Lane, Kittery, Maine

**William Goodell**, 1357-67 North Ave., Elizabeth, New Jersey

**Levite Lizotte**, 373 Lakeside Ave., Marlboro, Mass.

The Alumnus regrets to report the death of **Mildred Humphrey Day** in January 1962, at a Waterville hospital after several weeks' illness. Mrs. Day was a lifelong resident of Pittsfield and had been employed for the past several years as a bookkeeper at Pittsfield Woolen Yarns, Inc. She was a member of the First Universalist Church. She is survived by her husband, Deputy Sheriff Harry L. Day, a son, **Robert Day**, '51, her mother, Mrs. Bertha Humphrey and a brother, Jefferson Humphrey, both of Pittsfield, and three sisters, **Verna Humphrey Whitman**, '18, **Nina Humphrey MacDonald**, '31, both of Pittsfield, and **Glenis Humphrey Flewellyn**, '22 of Portland, as well as grandchildren.

## 1927

### Class Agent

**ANDREW J. KARKOS**

Lancaster Ave., Lunenburg, Mass.

New addresses: **Stuart W. Jones**, 2001 Columbia Pike, Arlington, Va.

**Donald H. Shorey**, Pittsfield funeral director, has completed construction of a new funeral chapel at the corner of Union St. and Hartland Avenue in Pittsfield. Located on the main floor is a large foyer, a chapel, office and a family room. At the rear of the 50 x 40 ft. building is a four car garage, with a five room apartment over the garage.

The apartment is occupied by **Mr. and Mrs. Marvin Huff (Arlene Walker)**, '35-'37. Mr. Huff is a business associate. Mr. Shorey has been nominated by Governor Reed for a second term on the State Board of Examiners of Funeral Directors, and he is a past president of the Maine Funeral Directors Association.

**Theresa Wagner Corey**, now residing at Mattapoisett, Mass., is a part-time art teacher at home and in the Mattapoisett school system. A son, David Hogan, is a music instructor in the Baltimore, Md., school system, and son Myles Corey, 14, is in school.

An R.N. Charge Nurse at the Hyde Rehabilitation Center at Bath, is **Thelma Harding Hunt**. Thelma, now widowed, has three sons, Walter, a Naval Airman; Alan, at the Bath Iron Works; and Robert, a student. Thelma's sisters are **Alice Harding Blake**, '32, **C. Nedra Harding Towns**, '34, and **Ruth H. Stinson**.

## THE TEN LEADING CLASSES

### By Total Contributions

1911	\$546.00
1925	402.50
1914	278.00
1912	260.00
1905	226.00
1908	214.00
1904	192.00
1906	192.00
1907	160.00
1917	145.00

Interim Report to April 15, 1962.  
(Fund Year ends August 15, 1962.)

## 1928

### Class Agent

**VERNESSA DAVIS FULLER**

15 Hillside Ave., S. Portland, Maine

New addresses: **Alice Manock**, 74 Atkinson St., Dover, New Hampshire

**Kathleen Milton Burns**, Box 524, Renton, Washington

**Dorothy Gustin Driscoll**, 43 Elm St., Melrose, Mass.

The Alumnus regrets to report that mail sent to **Stanley Jones** at Norridgewock, Maine, has been returned marked "Deceased." There are no details.

An auto mechanic for the Railway Express Agency in Boston is **Walter W. Prue**. Walter's address is now 61 Lake St., Winchester, Mass. He has three daughters, Margaret Anne 18, in her first year of nurse's training; Jeanne Marie 17, a high school senior; and Kathleen 13, in the eighth grade.

## 1929

### Class Agent

(Post open; a volunteer needed.)

New addresses: **Avis Burgess Tedesco**, 9261 Corner, Anaheim, Calif.

**Lorna Cabel Fox**, 7183 W. Beoner St., Jacksonville, Fla.

**Leon Kendall**, Box 8, Cocoa Beach, Fla.

**Lawrence Coffin** has taken over the management of Leo's Market in Pittsfield from its former owners. Mr. Coffin has had extensive experience in retailing and has been active in local organizations and civic affairs.

**Robert D. Moody**, 14 Cottage St., Spencer, Mass., has been active in the Odd Fellows. Bob is Past Grand, I.O.O.F. 1958-59, Encampment Officer, and Vice-Grand Monarch, Tajak Sanctorum, I.O.O.F., as well as a past president of Little League

Baseball. Married to the former Sylvia Albro, Bob has four children, three boys and a girl.

**Grace Quarrington Corey** has a son, James E., now a freshman at Bowdoin, and a daughter Barbara L., a junior at So. Portland High School. Address: 926 Sawyer St., So. Portland, Maine.

Postmaster at McKinley, Maine, since July 3, 1935, is **Charlotte Reed Robbins**. A daughter, Patricia Ann True, is a former instructor at Husson College in Bangor, and son George is employed at the State Street Bank and Trust Co., Boston, Mass.

## 1930

New addresses: **Andre Iverson**, 23 Edgewater Road, Falmouth Foreside, Maine

**Zelma Homestead Harris**, 35 Patterson St., Augusta, Maine

**Royce Purinton**, 10 Monroe Ave., Greenfield, Mass.

**Helen Gould Wheeler**, 25 Nichols St., Pittsfield, Maine

**Robert Cowan**, 8 Chandler St., Boston 74, Mass., Arlington Br.

**Lawrence E. "Larry" Johnson**, former MCI track and field great, owns and operates, with his wife, the former Eileen Shea, the Driftwood Art and Gift Shop on Bailey's Island. In his spare time, Larry is an accomplished painter and stone mason. The Johnsons have two sons, Larry, Jr., in the U. S. Coast Guard, and Jeffrey Allen, with the U. S. Air Force.

**Andrew "Andy" Iverson** is a plumbing and heating contractor in Portland. Daughter Carol Ann is a nursing graduate of the Cornell Medical Center, with a B.S. degree. A son, Andy, Jr., will be a 1962 graduate of Bowdoin College, and plans to enter Tufts Medical School next fall.

**Henry R. Higgins** has a son, Robert Russell, in the 1962 graduating class at MCI. Henry is a civil engineer, engaged in building construction.

Rural mail carrier for the town of Washington, Maine, is **Charles C. Ludwig**. Charles has two children, Stephen B., a social worker for the State of Maine, and a daughter, Charlene Ludwig Moody, a housewife.

## 1931

### Class Agent

**CAPT. VINCENT HATHORN**

Commanding Officer, Naval Air Base So. Weymouth, Mass.

New addresses: **Alfred Fuller**, Summit Terrace, Dobbs Ferry, N. Y.

**Kenneth Sargent**, 536 Hammond St., Bangor, Maine

**Charles Hanson**, 42 Wilson St., Presque Isle, Maine, is seed potato inspector for the State of Maine, Division of Plant Industry. His children, Martha and Charles, Jr., are students at Presque Isle High School. Charles, Jr., "Chip," plans to enter the University of Maine in the fall.

Class Agent **Vinnie Hathorn** will retire from the U. S. Navy in June. He has purchased the property known as Edmunds Farm in Burnham, Maine.

## 1932

### Class Agent

**BARBARA STANLEY McLEAN**  
21 Chester St., Pittsfield, Maine

New addresses: **Albert C. Bailey**, 13 Glen Carl Rd., Upper Saddle River, N. J.

**Peggy Andrews Bond**, Box 620, Stuart, Fla., attended the University of Maine 1961 summer session, to complete work toward a master's degree. She is teaching in secondary English.



# 1933

## Class Agent

**GERALDINE CARGILL SOPER**  
R.F.D. No. 2, Dyer Rd., Lewiston, Maine  
New addresses: Mr. and Mrs. **Henry Kinney (Mabel Warren)**, 775A Sawyer St., South Portland, Maine  
**Arthur W. Danielson**, 70 School St., Manchester, Mass.  
**Everett A. Hamilton**, 548 Broad St., Portsmouth, N. H.  
**Geraldine Scott Carleton**, 1 Birchhill Lane, Troy, N. Y.  
**Hope Read Shea**, 51 Forbes St., E. Hartford, Conn.  
**William S. Coffin**, 23 Greenwood St., Augusta, Maine  
**Virginia Wright Sappington**, 15554 Bristol Circle W., Clearwater, Fla.  
Wanted: Addresses for, or news of:  
**Kenneth L. Burns**, **Phyllis Bickford Meyer**.

# 1934

## Class Agent

**EDITH HOFFSES PAYSON**  
Union, Maine  
New addresses: **John E. Sullivan**, Box 366, Kezar Falls, Maine  
**Ruth H. Vickery**, 36 Hancock St., Apt. 14, Boston, Mass.  
**Rochie F. Smith**, formerly of Pittsfield, has been named town manager at Dexter, Maine. He has served as town manager of Garland and Exeter, Maine, and previously was manager of the Dexter A & P Store.  
**Cameron M. Story** is affiliated with the Whirlpool Corporation of Evansville, Indiana. His address is R.R. No. 5, Old State Road, Evansville, Indiana.

# 1935

## Class Agent

**GERALDINE MANN BOWN**  
86 Main St., Norway, Maine  
New addresses: **Raymond N. Renaud**, 3342 Stuyvesant St., N.W., Washington 15, D. C.  
**Dora Stacy Pooley**, 7519th Comm., Sqdn. APO 755, N. Y., N. Y.  
**Frank "Bud" Homstead**, Pittsfield supermarket operator, has been elected president of the local bowling league, and **Lawrence Stafford '38** was elected vice-president at the same meeting.  
Professor **Herbert "Spike" Leonard** again served as chairman of the Annual Farm and Home Week at the University of Maine, a post that he has held for the past 9 years. Over 3300 registered for the 1961 gathering. He has also been elected to a two year term for the Town of Orono school board.

**Carl F. Goodridge** is employed by the maintenance department of Trinity College in Hartford, Conn. Following the death of his wife in 1958, Mr. Goodridge visited his brother **Newell Goodridge '38**, in California for several months before returning to Maine. He has since remarried, and lives at C-73 Cotswold St., Hartford 10, Conn. Carl holds many fond memories of his years at MCI.

# 1936

## Class Agent

**ALICE CONROY CRABBE**  
219 Richland St., So. Portland, Maine  
Changes of address: **Charles M. Thomas**, 1707 Concord Ct., Apt. 302, Village Green, Kansas City, Mo.  
**Ethel Gould Wyman**, R.F.D. No. 1, Clinton, Maine  
**Frances Maynard Condy**, 375 Buna Road, Fort Lee, Va.  
**Woodrow Thurlow**, P.O. Box 232, Pittsfield, Maine  
**Ruth Conquest**, Box 711, Bangor, Maine

**Virginia Soule Smithwick**, R.F.D. No. 3, Augusta Road, Waterville, has a nephew, Delmont Soule, Jr., at MCI. Her husband, Weston, is a crane operator for the Maine Central Railroad. In February 1962, Virginia attended the Maine Cosmetologist Association's tea at the Blaine House in Augusta.

**Eleanor Blaisdell Bradeen** has been active in the Order of the Eastern Star, is a Past Noble Grand of the Rebekah Lodge and is associate conductress of the Miniwanea Chapter, O.E.S. Eleanor has three girls, Glenna 17, Janice 11, and Alice 14.

Our energetic Class Agent, **Alice Conroy Crabbe**, now has three children, John 15, David 12, and Joanne 3. John attends South Portland High, where Eva Alley, a well-remembered Latin teacher at MCI is now teaching. She wishes to be remembered to all '36ers! Alice's husband, Robert, is chief deputy U. S. Marshal with the Department of Justice.

**Margaret M. McInnis** is employed in the law offices of Eaton, Peabody, Bradford & Veague in Bangor, as manager of the Estate Department. Address: 39 Hannibal St., Bangor.

Teaching biology at Scituate High School in Scituate, Mass., is **George J. Chiros**. George has four children of high school age and younger: Mary Ann, Georgiana, James, and Christina.

**Edward A. Sprague, Jr.**, 72 Hermon St., Winthrop, Mass., is traffic clerk for the M & M Transport Co., Somerville, Mass.

**Charles Randall** is farming at Liberty, Maine. Charles is raising more than just crops. He and Betty present the following roll call: Virginia 14, Deborah 9, Clifford 5, Timothy 4, and Nancy 3. Thanks for the kind words regarding the Alumnus, Charles!

# 1937

## Class Agent

**AUBREY VOSE**  
4664 Del Moreno Dr.  
Woodland Hills, Calif.  
New addresses: The **Lionel Pomeroy**s, 284 Parkway South, Brewer, Maine  
**Opal Maxim Edgecomb**, 33 Hemlock St., Shelton, Conn.  
**Marion Hollis Morrill**, Box 3, West Minot, Maine, when not busy in her home,

is a stitcher at Withington's Mill in West Minot. Daughter **Mary Jane Morrill '60** is a graduate of the Comptometer and IBM School in Portland, and a son, Rupert M., Jr., is a student at Edward Little High School in Auburn, Maine.

**Thora Brooks Bennett**, R.F.D. No. 1, Pittsfield, is employed at Northeast Shoe Co. in Pittsfield. Oldest son Mylan is employed at Wright's Dairy in Pittsfield, and **Keith Bennett** is a 1960 MCI graduate. Daughter Sandra Lee is a high ranking member of the MCI junior class.

Can anyone from '37 help us find **Roland Raymond** or **Clif Robichaud**?

# 1938

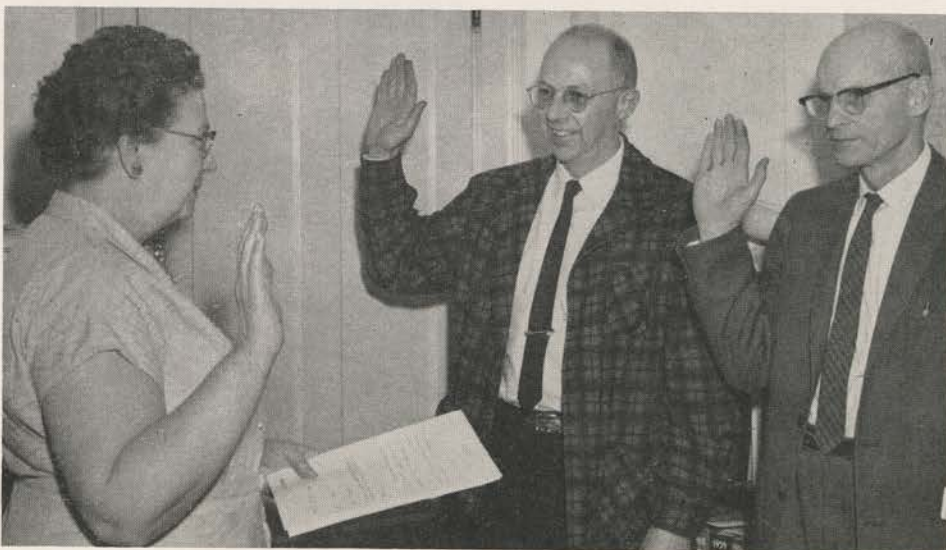
## Class Agent

**ROBERT HUBBARD**  
31 Summer St., Pittsfield, Maine  
New addresses: **Ruth Shuman Valore**, 6310 Ridgebury Blvd., Cleveland 24, Ohio.  
**Thornton Moore** visited the MCI Campus last August on one of the final legs of an around-the-world tour. Thornton, who is currently teaching French in Hawaii, gave the Alumni Office some glowing reports of the trip, and later sent a long and very interesting letter describing his adventures. His address is 529 Kamoku St., Honolulu 14, Hawaii.

**Newell Goodridge**, the Alumnus is happy to report, is a member of the San Francisco Fire Department. He had been "lost" from our files for some time. Newell's address is 977 Valencia St., San Francisco 10, Calif.

**Rae Hurd Smith** and her family have moved from Forest Ave. in Orono to 124 Main St.

The Rev. Dana McLean Greeley, DD., president of the Unitarian-Universalist Association, Boston, has announced the appointment of the Rev. **Charles N. Vickery** as a field worker for the Unitarian-Universalist World Service, the Department of Service Projects of the Association. The Rev. Mr. Vickery comes to his new post from the pulpit of the Columbus, Ohio, Universalist Church. His work will be the supervision of field activities in Africa, the Middle East and South Africa. His address is 36 Hancock Street, Apt. 14, Boston, Mass.



Elected as selectmen for the Town of Pittsfield this spring were Frank Haseltine '40 and Norbert Young, both members of the MCI faculty. Frank, an instructor in biology, ran successfully for reelection, while Norby, track coach for many years and instructor in industrial arts, was elected in his first candidacy for public office. They were sworn in by Town Clerk, Inez Knowlton Severance '23, who herself was reelected to the post she has filled for many years.



## 1939

### Class Agent

**RITA BOUCHARD NORTON**  
106 Yuma Dr., Alexandria, La.

New addresses: **Patricia Kimball Tunni-**  
**son**, 1202 Ardway Road, R.D. No. 3,  
Norristown, Penn.

**Wendell Morrison**, 76 Wood Rd., Lin-  
coln, R. I.

**Ervena Frederick Belcher**, 4019 River-  
side Ave., Somerset, Mass.

Our sympathies are extended to **Robert St. Pierre** in the death of his wife Barbara Ann, in March, 1961. Mrs. St. Pierre was active in the Brunswick, Maine, Junior High School Band Parents' Club, the PTA, and the Brunswick Golf Club. She is survived by her husband and three children, Linda 13, Michael 11, and Ivy Marie three. Robert is a member of the Brunswick High School faculty.

**Mike Puia**, as head football coach at Stephens High in Rumford, has been working hard to rebuild Stephens' football forces.

**Mildred Merrithew Bragg** and children, Diana 16, Dennis 13, and Deborah 10, have joined Mrs. Bragg's husband, Sgt. 1-c Frederick Bragg, who is on an army assignment in southern Germany. Army life, with its attendant travel, is routine to the Bragg family. Sgt. Bragg has been in the service for more than 20 years, and the family has been raised under Army conditions, according to Mrs. Bragg. To the family this is "Just another assignment."

**Ina True Swetnam** is living in Camden, Maine. She is married to the Reverend Gerald Swetnam, and their address is 8 Belnap Ave., Camden, Maine.

Major **Carl Estes** has been promoted to the rank of Lieutenant Colonel, according to word received by his father, **Elmer Estes '16**. Carl is stationed at Headquarters, 16th Air Force Base at Torrejon, Spain, as division commander of armament and electronics. Congratulations on the big step, Carl!

**Harry Kenton Gould** writes that he is once again a student, this time at Berkeley Baptist Divinity School in Berkeley, California. Kenton and his wife, Geraldine, have two children, Janeen 4, and Daniel 2. Permit us to quote Harry in part: "There is little question in my mind that I would have been voted the least likely member of our class to become a Baptist preacher, but we have bet our lives that the power of God can overcome even such an obstacle as my old self. . . . Perhaps, some day, God willing, I may have the opportunity of preaching a sermon in my own home town. . . . Very nicely said, Harry. We all hope it comes true. His address is 2423 Blake Street, Apt. 206, Berkeley 4, Calif.

## 1940

### Class Agent

**ROBERT MOULTON**  
832 Sawyer St., So. Portland, Maine  
New addresses: Mr. and Mrs. **Leonard Oliver (Frances Goodrich '39)**, 32 Gates Ave., Plainview, N. Y.  
**Richard Hall**, Madison, Maine  
**Elizabeth Kinney Jones**, 7420 Arlington Rd., Bethesda 14, Md.

Class Agent **Bob Moulton** has moved back to Maine (see above), and will operate a heating and plumbing business. We wish Bob all success in this venture.

**Frank Lewis** may be found at 423 N. Chandler St., Monterey Park, Calif.

Mr. and Mrs. **Norris Cianchette** have moved back to Pittsfield. They had spent several years in Caribou, Maine. She is the former **Marilyn Bunker '47**.

**Frank Haseltine** and **Norbert Young**, both faculty members at MCI, were elected as Selectmen of the Town of Pittsfield. For Frank it was a reelection, but a new experience for "Norby."

Dr. **John H. Cole** of Orlando, Fla., became a diplomat of the American Board of Anesthesia last spring.

## 1941

### Class Agent

**BURTON HAMMOND**  
9 Greeley St., Pittsfield, Maine  
New addresses: **Ray A. Cook**, 185 Main St., Winthrop, Maine

**Dorothy Shaw Porter**, 57 Jackson St., Sanford, Maine

**Francis J. Gaudette**, 55 Kimball Ave., Mexico, Maine

**Martin Kelley**, 49 Arnoldale Rd., West Hartford, Conn.

**Vesper Boynton**, 6 Vinton St., S. Boston 27, Mass.

**Edith Atwell Smith**, 119 Dickman, Loring AFB, Maine

**Donald M. Howard** in the '41 Trumpet was described as a "Farmer De-lux." In any event, he is now raising poultry on a substantial scale, specializing in raising laying hens. He and his family reside in Winthrop, Maine. There are four small Howards. Don taught at Lee Academy at one time. His nephew, **Clayton Howard**, is a 1961 MCI graduate.

President of the Pittsfield, Maine, Kiwanis Club for 1961-62, is **Burton G. Hammond**. Hammond is a partner in the Lehr-Hammond Insurance Agency (**Willard Lehr '42**), and has been active in Kiwanis work since his return to Pittsfield several years ago. Burton has also been active in support of MCI, and has served as president of the MCI Alumni Association for the past year.

## 1942

### Class Agent

**MARSHALL B. HAMMOND**  
951 Middle St., Bath, Maine  
New addresses: **Jeanne Palmer Noble**, 4950 81st Ave., Pinellas Park, Fla.

**Vernon A. Smiley**, Box 435, Bethel, Maine

**Lorraine Frost Brown**, 140 South Main St., Pittsfield, Maine

**Jeanne Palmer Noble**, R. No. 1, New Gloucester, Maine

Welcome Wagons Incorporated has announced the appointment of **Sylvia Snow Lehr** as its supervisor for the State of Maine. Sylvia has completed two courses in New York City, one qualifying her as a Welcome Wagon Hostess, and the other preparing her for her work of supervising the Welcome Wagon programs throughout the state. One of her hostesses for the Brunswick area is **Winnie Ellingwood Hammond '41**.

Class Agent **Marshall Hammond** is back in Maine as business manager of the Bath Daily Times. Marshall has previously edited the Pittsfield Advertiser and the Teaneck Sun at Teaneck, N. J., and more recently has been an account executive with a public relations firm in New Jersey. He and Mrs. Hammond (**Winnifred Ellingwood '41**) are living in Bath with their three children.

There was a real family reunion at the home of Mr. and Mrs. Lawrence Bates in Pittsfield last summer when Captain and **Lea Lawrence Maling** and their children arrived from three years in Germany. **Floyd Lawrence '60** arrived for the weekend from Boston, where he is attending Wentworth Institute, and older son **Ralph Lawrence '49** came to Pittsfield from Idaho. Ralph has graduated from the University of Idaho with a degree in civil engineering.

## 1943

### Class Agent

**PRISCILLA CHIPMAN LITTLE**  
75 Main St., Richmond, Maine

New addresses: **Ann Hatch Bragdon's** new mailing address is Upper Little River Road, East Lebanon, Maine. **Robert P. Welch** may now be found at 222 N. 5th St., Waterville, Ohio. **Florence Welch** is residing in Essex, Mass., at 300 Western Ave. Dr. **Clayton Curtis'** new address is 1766 NE 21st St., Gainesville, Fla. **Kay Mills Browne** is still in Elmhurst, Ill., but has moved across town to 432 E. Park St. **Annie Frost Field** has moved from Pittsfield to 13 Dennis St., Attleboro, Mass.

Class Agent **Priscilla Chipman Little**, "Chippie" to old classmates, is engaged in a search for "lost" members of '43. Should the whereabouts of **Harold Willey** or **Cynthia Clark Crocker** be known, please contact Chippie or the Alumni Office.

**Eric R. Doughty** has been named farm service coordinator of the Central Maine Power Company. Eric, a Topsham native and University of Maine graduate, has been assistant coordinator for CMP since the fall of 1956. His address is 75 High Street, Winthrop, Maine.

## 1944

### Class Agent

**HATTIE WHITE HANNIGAN**  
93 Summer St., Andover, Mass.

New addresses: **James F. "Jimmy" Powell** has been located at 66 Polaris Drive, Leavittown, L. I., N. Y., after being missing from the files of the Alumnus for some time. **Terry Garcelon Steele** has moved from Andover, Conn. to R.F.D. No. 2, Newport, Maine. **Joyce Palmer Beaulieu's** new address is New Gloucester, Maine. Our new listing for **Dorothy Tweedie Forrest** is E. Elm, R. No. 1, Yarmouth, Maine. **Shirley Wilcox Scott** has changed her Portland, Maine, address to 203 Coyle St.

The Penobscot Chemical and Fiber Company has promoted **Raymond C. Humphrey** to engineering superintendent of their Great Works plant. Ray served in the Navy as an electronics technician until 1946, and was graduated from the University of Maine in 1951 with a degree in mechanical engineering. He joined PCF in 1953 as a junior engineer, and was promoted to assistant chief engineer in 1959. Mr. and Mrs. Humphrey (**Shirley Bradbury Humphrey '47**) reside in Orono with their children, Carol and Jane.

**Beatrice Wright Carter** was a delegate from the State of Washington to the National Education Association convention at Atlantic City, N. J., last summer. Beatrice now has two girls, Heidi Lee 5, and Lois Bea 2. She is teaching on the first level in an ungraded school, and the Carters have recently purchased a modern home.

### THE TEN LEADING CLASSES By Number of Contributors

1961	15
1960	15
1914	13
1911	12
1905	11
1906	11
1912	11
1916	11
1915	9
1918	9
1938	9

Interim Report to April 15, 1962.  
(Fund Year ends August 15, 1962.)



# 1945

## Class Agent

LEWIS R. FITTS

R.F.D. No. 1, Box 130B, Pittsfield, Maine

New addresses: **Virginia Foster Kaspar** can claim to be one of the more travelled members of the class. She has recently made the long move from Key West, Florida, to Chugwater, Wyoming, Box 21. **Dorothy Austin Turner** now resides in South Paris, Maine. **Maxine Higgins Ayes**, for a time missing from our files, has been located at R. No. 4, Augusta, Maine. **Hazel Dunton Killam's** address is now 5914 Mill Dr., Wonder Lake 5, Ill. **Mary Crawford McLeod** now lives at 6326 Calle Capela, Tucson, Arizona.

**Lorraine Ward McKechnie**, 5 Lilac Place, Dover, N. J., has three children, Karen 4, Braden 6, and a newcomer, Scott. Her husband, Karl, is working on military electronics for the Bell Telephone Laboratories.

**Muriel Kenniston Clement** has started a fine family, three girls and a boy. Joann is 11, Carol 8, Debbie 6, and Brian is 3. Husband, Russ, is Ass't Service Mgr. for the A. C. Hines Co., 2nd oldest Pontiac dealer in the country. Muriel is working in the accounting department of an insurance office.

# 1946

## Class Agent

STANLEY WYMAN

Ashland, Mass.

New addresses: **Evelyn Frederick** has moved from Norwood, Mass., to 45 Somerset Ave., Pittsfield, Maine. Also returning to Pittsfield is **Eileen Getchell Gage** from Troy, Maine, to 19 Cianchette Ave. The present address of the **Durwood Emerys** (**Margaret Webb '47**) is R.F.D. Carmel, Maine. Mr. and Mrs. **Charles Mitchell** (**Arline Dunton '47**) may be reached at Box 373, Bucksport, Maine. **H. Wilson Nason, Jr.**, is at Boulder, Colorado, Rt. No. 3, Box 342. **Ruth Shaw Thomas** is still in Lincoln, Maine, but the address is now R.F.D. No. 1, Box 119. **David E. Dexter** has left Maine for Washington, D. C., 3134 Q St., N.W. **Kathleen Foster Durost's** new address is 704 Main St., Wilmington, Mass.

Mr. and Mrs. **Richard Sirois** (**Ada Young '49**), 180 Head St., Manchester, N. H.

The latest news of class song-bird **Freda Gray-Masse** is that she has sung during the past few seasons with the Boston Symphony Orchestra, the Bangor Symphony Orchestra, and the Rhode Island Symphony Orchestra. She was a guest soloist with the Colby College Concert Choir in Washington, D. C. last year.

# 1947

## Class Agents

MR. AND MRS. LINWOOD PELLETIER  
(MARILYN CIANCHETTE)

Cornish, Maine

New addresses: **Richard A. Tibbetts**, Bethel, Maine; **John C. Shorey**, 2 Livingston St., Pittsfield, Maine; **Charles F. De Beck**, R. No. 2, Corinna, Maine; **William E. Shumway**, 25851 Warrington Drive, Dearborn, Michigan; **Anthony J. Machaj**, 29 Estes St., Ipswich, Mass.; **Lendal Dahlgren**, 105 Portland St., Yarmouth, Maine; **Ralph Clark**, 61 Pierce St., Gardiner, Maine; **Thelma Hopkins Gilpatrick**, 30 Ash St., Nashua, N. H.; Mr. and Mrs. **Frederick E. Thompson** (**Mildred Tweedy '48**), 38 E. Diane Dr., Keene, N. H.; **William Hendricks, Jr.**, 431 East Ave., Lewiston, Maine; **Sewell Millett**, Lee, Maine; Mr. and Mrs. **Peter Connolly** (**Joyce Burns**), R.F.D. No. 1, Cumberland Ctr., Maine; **Ethelyn Grindell Hill**, 67 N. Main St., Pittsfield, Maine; **Walter S. Dow**, Mount Holly, New Jersey; **George Morse**, Moffet Rd., Cold Springs, N. Y.

**William F. Paradis** has been teaching in a Storrs, Conn., high school since 1958, and is now director of the work-study program. He has been active as a member and a leader in a number of educational organizations, both local and state.

**William Hendricks, Jr.**, is associated with the Lewiston (Maine) Gas Light Company, is married and a happy parent. Bill now lives at 431 East Avenue, Lewiston, Maine.



Outdoorsman Dr. John Cameron '47 of Augusta displays the results of an early fall hunt. "Scotty" to his classmates, he now resides at 56 School St., Augusta.

# 1948

## Class Agents

Day

ROBERT H. LIBBY

14163 S. Calumet Ave., Dolton, Ill.

Boarding

PHILIP A. DUGAS

Union St., Lisbon Falls, Maine

New addresses: **Elizabeth Coolidge Whalen**, 49 Beacon St., Florence, Mass.; **Ted Webster, Jr.**, 1211 Barnes Rd., Wallingford, Conn.; **Gerald Hodge**, 15 Sargent Dr., Brewer, Maine; **Theresa Sirois Blaser**, 2140 Mt. Vernon, Toledo 7, Ohio; **William A. Sprague**, 19 Cannon Rd., South Portland, Maine; **Cecil D. Butler**, Box 281, Quakertown, Pa.; **William A. Sprague**, 140 Western Ave., Waterville, Maine; **Herbert M. Condon**, 39 N. 7th East, Brigham City, Utah; **Doris Young Rosenberg**, 320 Evans, Camden, N. J.

News has been received by the Alumnus that **Ricardo Valladares** has been placed in a concentration camp in Cuba, that his farm and possessions, including an airplane, have been confiscated by the Castro regime. His wife and children are reported to still be in Cuba, but there are no other details.

**Edwin M. Reed** now lives at 22 State St., Marblehead, Mass., where he is employed by the Lynn Sand and Stone Co. He is married and has two boys.

The Alumnus regrets to report the death of **Ann Cox Harbison** in California, as a

result of an automobile accident in August, 1961. Besides her parents and husband, survivors include a brother and two small children.

We have received word that **Leroy C. Pinkham** is now principal of West End Christian High School, Atlantic and 16th Sts., Hopewell, Virginia.

**Ralph C. "Bud" Ham**, now residing at 109 No. Main St., Brewer, Maine, and who was a member of the Maine 100th Legislature, now owns and operates the Sargent, Kennedy, and Adams Insurance Agency, and is co-owner of Ham's Real Estate Agency. "Bud" has served as a lieutenant in the U. S. Army in Korea and Japan. He and Mrs. Ham have four children: Brenda, 8, Margo, 6, Philip, 3, and Michele, 1.

**Arey Bryant** was elected secretary-treasurer of the Somerset County Rural Letter Carriers Association at the annual meeting of the group. He and his wife, **Virginia Coolbroth '50**, reside at 6 Nichols St., Pittsfield, Maine.

**John E. Sevigny** is title reviewing appraiser in the mortgage loan and real estate department of the Prudential Insurance Company. He is now located at 457 East 37th St., Erie, Pa.

**Alice Doncet Newman** was married last fall to Gerald F. Bisson of Skowhegan. Mr. Bisson is a veteran of World War II, and is employed at Sampson's Drug Store in Skowhegan. Their address is R.F.D. No. 1, Madison, Maine.

# 1949

## Class Agents

Day

EMILY SNOW SINCLAIR

R.F.D. No. 1, Pittsfield, Maine

Boarding

JERE E. FREEMAN

16 Highland Ave., Groveland, Mass.

New addresses: Old '49 has done considerable shifting of locations during the past year, with even Class Agent **Jere Freeman** getting into the act. Jere has moved from Quincy, Mass., to the address shown above. Other moves: **Marilyn Bishop Glavine** is now at St. Albans, Maine; **Marian Fowler Chamberlain**, Benton, Maine; **Hardie Pierce, Jr.**, R.F.D., Duxbury, Mass.; **John A. Howarth**, 10 Sewall Rd., So. Berwick, Maine (thanks for the kind words about the Alumnus, John); **Irving Judson, Jr.**, 602 Cedar St., Tipton, Iowa; **Capt. Robert C. Hackett**, 2081B, So. Car. Ave., Homestead AFB, Fla.; **Ray Brown**, 9 Getchell St., Waterville, Maine; **Marilyn White Slovak**, 38 Shore Rd., Babylon, L. I., N. Y.; **Robert Hinds**, 712 Troy Blvd., W. Palm Beach, Fla.; **S-Sgt. Kenneth Robinson**, 3d Mar. Div., FPO San Francisco, Calif.; **Leonard Ames**, 1550 Woodbury, Portsmouth, N. H.; **Ralph Lawrence**, 13 Bates St., Pittsfield, Maine; **Helen Crowell Hinds**, Wayne, Maine.

Missing from our files for a short period, but now "found" are **Ray Bird**, 627 South College Ave., Ft. Collins, Colo.; **Barbara Ackley Hildebrandt**, 66 Fisher Road, Arlington, Mass.; **Jean Farnsworth Tenney**, 443 West St., Gardner, Maine.

**Antoinette Deraps Buckley** is now teaching at Ellsworth, Maine, High School.

**Steve Bogue** is assistant office manager for the Educator Cracker Co. in Lowell, Mass. Steve is married and has two children, a son, 3, and a daughter, 2. The Bogue's live at 6 Susan Ave., West Chelmsford, Mass.

**Joyce Dobson Cook** may now be reached at Box 1909, R.C.A.F. Station, Cold Lake, Alberta. Joyce and Captain Mark Cook have three children, Ann 6, Susan 3, and



Nancy I. Captain Cook is serving a two year tour of duty with the R.C.A.F., as part of an exchange program with the U. S. Air Force. The address sounds rather bleak, Joyce!

## 1950

### Class Agents

#### Day

JOAN COFFIN BENOIT  
136 Delmont Dr., Lexington, Ky.

#### Boarding

WILLIS W. STROUT  
Main St., Millbridge, Maine

New addresses: Mr. and Mrs. **George Benoit** (Class Agent **Joan Coffin**), to address shown above. **Robert Jackson** to Ellsworth Falls, Maine; **Muriel Barker Reynolds** to 4308 Via Olivero, Las Vegas, Nev.; **Thomas F. Monaghan** to 153 Falmouth St., Portland, Maine; **Gloria Bilodeau** to Windy's Trailer Court, N. Pine St., Middletown, Pa.; **Julia Jackson Bird** to R.R. No. 1, Box 302, New Lebanon, Ohio; **Raymond Moffett, Jr.**, to 704 E. Thomas St., Lancaster Apts., Seattle, Washington; **Harold Burbank** to 13 Intervale Road, Kennebunk, Maine; **Cyrus Wentworth** to 643 Miranda St., Oakland 9, Calif.; **Jerome P. Hallee** to 47 Maynard St., Arlington 74, Mass.; Mr. and Mrs. **Raymond Buxton (Joyce Buteau)**, Legue Office, Box 34, Navy 115, FPO New York, N. Y.

Recently located are **John Wentworth**, 643 Miranda St., Oakland 9, Calif.; **Robert Ames**, 7 Dismukes St., Kittery, Maine.

Dr. **Richard F. Berry** is practicing dentistry in Skowhegan, Maine. Dick lives at 4 Greenwood Ave., Skowhegan.

Dr. **David Dineen** was married to Nancy Carmichael of Gorham, Maine, on August 26 at St. Mary's Church in Westbrook. Dr. Dineen is practicing at the Pine Tree Veterinary Hospital in Augusta. Dick received his degree last year from the University of Toronto, College of Veterinary Medicine.

Another doctor from the Class of 1950 is **Richard Doherty**. He and Mrs. Doherty are residing at 3 Euston St., Brookline 1, Mass. Dr. Doherty will specialize in pediatrics at the famed Children's Hospital in Boston.

**Philip A. Short** was married in October, 1961, to Sarah Warfield Heyn of Scarsdale, N. Y. The couple will reside at 1185 Boylston St., Boston, Mass.

**Joan Coffin Benoit** reports from Kentucky that four children, aged 8, 6, 3, and 9 months, are keeping her busy. It's not hard to believe. Her husband, George, has received his Ph.D. degree in soil physics from Iowa State, and is engaged in research at the University of Kentucky.

Another change of address: Mr. and Mrs. **Robert Brooks (Lois Snow '52)** are now residing at 95 N. Middle St., Skowhegan, Maine.

Ethel D. Miller of Sangerville became the bride of **Phillip Vroom** in February 1962. Phil is maintenance man at the First National Bank in Pittsfield. He has previously spent four years in the U. S. Air Force.

## 1951

### Class Agents

#### Day

BARBARA ROSS WOLLENSAK  
4136 Springer St., Royal Oak, Mich.

#### Boarding

ROBERT C. HUTCHINSON  
63 Mayflower Rd., Augusta, Maine

New addresses: **Marie Morrison**, 15 Manson St., Pittsfield, Maine; **Dominic Wykels**, 246 Gerald Dr., R.F.D. No. 3, Rockville, Conn.; **Heather Roundy Read**, 4354 Carfax Ave., Lakewood, Calif.; **Jerome R. Hallee, S.M.**, Marist College and Seminary, Framingham Centre, Mass.; **Beverly Grignon Langley**, Canaan, Maine; **Jean**

**Langley Bubar**, Plymouth, Maine; Mr. and Mrs. **Arthur G. Johnson (Cynthia Brown '53)**, Milford, Maine; **Edward Ausplund, Jr.**, R.F.D. No. 1, Rockland, Maine; **Sterling Smith**, 18 Highland Ave., Pittsfield, Maine; **Emery H. Herrick**, Sedgwick, Maine; **Miles Dodge**, 1436 Western, Glendale, Calif.

Missing for a while from the files of the *Alumnus*, but now "found," are **Walter Anthony**, 412 Newbury St., W. Peabody, Mass., and **Walter S. Allen**, 141 Meridan Ave., Levittown, L. I., N. Y.

T/Sgt. **Ronald E. Horton** is a crewman on an Air Force refueling aircraft. Ronnie is married and has three children. The family presently resides at 65 E. Bryne St., Roswell, New Mexico.

**John Sawyer** now lives at 427 Canton St., Stoughton, Mass. The Sawyer's have a daughter, age 2. John is manager of a business office in Boston.

The new owner of Shepard's, Inc., a business supply firm in Augusta, is **David Higgins, Jr.** Dave is married and has three children.

Mr. and Mrs. Kevin Dwinell (**Sally Cianchette**) announced the birth of a daughter, Kelly Louise, on Saturday, Sept. 2, in Waterville. Kelly Louise is the Dwinell's third child. Address: 70 Cambridge Rd., Woburn, Mass.

The *Alumnus* regrets to report the death of **Joan Reynolds Stearns** on January 3, 1962, at Canton, Mass. Survivors include her husband, four daughters and a son; her parents, Mr. and Mrs. **Ronello Reynolds (Dorothy Clay '22)**, a brother, **Ronello Reynolds, Jr. '55**, and two sisters, Linda and Paula Reynolds, students at MCI.

Ownership of the Perryville Drug Store in Auburn, Maine, has been taken by **Robert K. Berry**. Bob received his degree in pharmacy from the Massachusetts College of Pharmacy in Boston. He was employed for several years at Packard's Pharmacy in Auburn, and prior to that in Brewer, Maine, and Brighton, Mass. He is a registered pharmacist in Maine, Massachusetts and Vermont, and is active in several pharmaceutical associations as an officer or member.

**Charles J. Ochmanski** was married in August, 1961, to Martha Lillian Masters of Auburn. Mrs. Ochmanski is a graduate of the College of New Rochelle, N. Y., and taught at the Jordan School in Lewiston. Mr. Ochmanski served four years in the Air Force, and is now associated with the L. G. Balfour Co., Rochester, N. Y.

Barbara Ann Varney, dean of women at Bates College was married in November to **James M. Randall**, Edward Little High School faculty member. Mrs. Randall is a graduate of Bates College, and has a master of education degree from the University of Maine. She is president of the Maine Assn. of Women Deans and Counselors. Jim is a University of Maine graduate, and served in the U. S. Army previous to his teaching assignment in Lewiston. The Randalls reside at 96 Wood St., Lewiston.

The First Baptist Church of Pittsfield has granted a "License to Preach" to **Robert Vance, Jr.** A "License to Preach" is a courtesy that may be extended by the home church to any person who shows ability for the ministry. Bob is currently pastoring two churches near Biddeford. He was guest minister at the Pittsfield church for two Sundays during the past summer.

**Robert Day**, 20 Jackson Rd., Hazardville, Conn., is the father of a six year old girl, and a boy, 5. Bob is principal of a

Junior-Senior high school in nearby Somers, Conn., and received a master's degree from Hartford University in June 1961.

**Gerald F. Cowan**, 169 W. 76th St., New York 23, N. Y., is executive secretary for Academic Press, Inc., one of New York's outstanding publishing companies.

## 1952

### Class Agents

#### Day

NANCY SINCLAIR WILSON  
5847 Duxbury St., Houston 36, Texas

#### Boarding

THOMAS MITCHELL  
812 Kenduskeag Ave., Bangor, Maine

New addresses: **Ronald J. Rouleau**, 19 Garfield St., Bay Shore, L. I., N. Y.; **Edward Kimball**, 2 Coburn Ave., Skowhegan, Maine; Lt. **James Lynn**, 104 Hamlin St., Telford, Penna.; **Orien Walker, Jr.**, 3116 Liberty St., Daytona Beach, Fla.; Capt. **Richard A. Small**, General Delivery, Big Spring, Texas; **Kay Tilton Rowland**, USNRS, East Machias, Maine; **Kenneth E. Pinkham**, 341 Lynn St., Malden, Mass.; **F. Edson Boker**, 13007 Daphne, Gardena, Calif.; **Kenton Ames**, 15 Marshall St., Hartford 5, Conn.; **Louise Kellis Munch**, 21 Stinson Ave., Pittsfield, Maine; **Rodney Russell**, Center Ossipee, N. H.; S/Sgt. and Mrs. **Armour Brown (Loretta Doherty '53)**, P.O. Box 278, APO 243, New York, N. Y.; Lt. **Phillip Brown**, 225 Dickman Dr., Loring AFB, Maine; **Russell Edwards, Jr.**, 126 College Ave., Orono, Maine.

Temporarily "lost," but now found: **Glenys Hill Gifford**, 1207 McMorris Dr., Moanalua Terr., Honolulu 18, Hawaii.

A/1c **Maynard Jacobs** was chosen an outstanding airman for 1961 and has been promoted to the rank of S/Sgt. Sgt. Jacobs is currently stationed at Turner AFB, Albany, Georgia. He is crew chief of an RB 50 reconnaissance bomber. His wife, Barbara, and son, Nathan Douglas, are with him.

**Gerald Kenneth Sedgwick** was married in July to **Marvis Elaine Bryant '56**, at the



Edwin M. Purinton, principal at MCI from 1925-44, was a visitor during this past winter at the home of his daughter Jean Purinton Maynard '41, and son-in-law Robert Maynard '39, at their home in Pittsfield. A grandson, Jack E., is a freshman at MCI.

Mr. Purinton, for many years a director of the State School for Boys at South Portland after leaving MCI, became seriously ill in 1956. After a slow but complete recovery, he was associated with the Woodstock (Maine) High School, and more recently with the Stow, Mass., High School. Since last September Mr. Purinton has been teaching Contemporary Problems to senior students at the Laconia (N. H.) High School, and enjoying himself very much indeed. The Purintons reside at 120 Morrill St., Gifford, N. H.





In charge of erection of the 210' Radome at the Bell Telephone satellite communication station at Andover, Maine, was Alton E. "Chuck" Cianchette '48. Shown in the foreground is the control building for the Andover Space Station. Aided by five huge cranes, Chuck gave orders through a walky-talky to workers beside each crane, who in turn transmitted the orders to the crane operators. The Radome, 161' high, and 210' in diameter, is the largest inflated structure ever built, and houses a 340 ton, steel and aluminum rotating horn antenna. Chuck is married to the former Helen Esty '48. The Cianchettes have four children, 3 girls and one boy, and reside in Pittsfield.

First Baptist Church in Pittsfield. The bride has been employed as a bookkeeper for Friend & Friend in Newport. Gerald, who served in the Army in Korea, is employed at the Hartland Tannery as a dyer.

#### 1953

New addresses: **Joseph Morrison**, 287 Bellaire Dr., St. Petersburg, Fla.; Mr. and Mrs. **A. Brian Craig (Sally Barnes '54)**, 336 Main St., Waterville, Maine; **G. David Fenderson**, 148 Hillside Ave., South Portland, Maine; **Olive Hustus Louny**, 114 Portland St., Haverhill, Mass.; **Hamilton Grant**, Windham Hill R.F.D., So. Windham, Maine; **Paul Kimball**, 150 Collins St., Apt. 6A, Hartford, Conn.; **Thomas W. Hinds**, 712 Troy Blvd., W. Palm Beach, Fla.; Mr. and Mrs. **Louis Peppin (Marlene Berry)**, R.F.D. North St., Mattapoisett, Mass.; **Edward Jewett**, 360 Pine Brook Rd., Eatontown, N. J.; **Phillip Coffin**, 24 Kimball Beach Rd., Hingham, Mass.; **Richard D. Merriman**, 52 Granger Ave., Saratoga Springs, N. Y.; **Constance Given Alexander**, 450 St. John St., Portland, Maine; **John H. Hartleb**, 13555 Southwest Jenkins Road, Apt. 43, Beaverton, Oregon.

Temporarily "lost": **Philip Buker**, 5027 Merrill St., Torrance, Calif.

**Maury Dore** has been named head football coach of the newly consolidated Paris-Norway High School. He lives in Norway, Maine.

Mr. and Mrs. **Joseph McNichol**, the former **Gloria Beattie**, are the parents of a son, **Richard Charles**, born at the Scott-Webb Hospital in Hartland on Dec. 8.

**Helen Leckemby** is married to **Joseph S. Miles**. They live, with their daughter **Jennifer Lynn**, at 750 Ivanhoe Street, Denver 20, Colorado.

**Merle S. Williams** was married in November to the former **Jane Adelaide Mitton** of East Vassalboro. She has been employed by the Maine Department of Health and Welfare. Merle is owner-manager of the Spotlight Pavilion roller skating rink and restaurant in Detroit, Maine.

#### 1954

##### Class Agent

##### Day

**MAXINE CIANCHETTE**

120 Main St., Pittsfield, Maine

New addresses: **C. Philip Taylor**, Gould Academy, Bethel, Maine; **Susan Coffin DeRoma**, 39 High St., Bar Harbor, Maine; **Janet Lander Erskine**, Lake Ave., Newport, Maine; Mr. and Mrs. **Elwood Lovejoy**

(**Gloria Bridgman**), Waldoboro, Maine; **James LeClair**, Box 169, Southington, Conn.; **Joan Emerson Hill**, 89 Woodbine Terrace, Pease AFB, New Hampshire; **Peter Hinds**, 712 Troy Blvd., W. Palm Beach, Florida; **Charles S. Foster**, Fortune's Rock, Biddeford, Maine; **Robert MacDonald**, Box 364, Middleboro, Mass.

**Joseph L. McAuley** was married in July to **Aileen Eldora Stewart** at Green Memorial A.M.E. Zion Church in Portland. Mrs. McAuley has been employed by Central Maine Power Company in the billing department, and Mr. McAuley is employed at the U. S. Post Office.

**James A. Arey** was married in September to **Elizabeth Ann Harvey** of Brookline, Mass. Mrs. Arey, a 1959 graduate of Boston University, had been employed as a stewardess with Pan American Airways, and has recently assumed a position with the Boston University News Bureau. Mr. Arey, a 1958 graduate of B.U. was separated from the U.S. Air Force in August and is employed by United Press International.

Mr. and Mrs. **Donn Varnum** are parents of a son, **Kenneth Allen**. **Donn** and Mrs. Varnum are seniors at Northland College, Ashland, Wis., and plan to return to Maine upon graduation.

Teaching at Newport, Maine, High School is **Donald LeBlanc**. Don's address is 10 Rowe St. Mrs. LeBlanc is the former **Jan Hanna**, once an instructor at MCI.

#### 1955

##### Class Agents

##### Day

**SHEILA COOKSON ALLINSON**  
1429 So. 158th St., Seattle, Wash.

##### Boarding

**PENNELL C. WOODARD**  
194 Lake St., Auburn, Maine

New addresses: **Ethel Rowe Green**, 3412 Euclid St., Kansas City 9, Mo.; **Vincent Trincia**, Canaan, Vermont; **James L. Reid, Jr.**, 29 St. Mary's Court, Brookline, Mass.; **Scott MacLean**, 36 Winter St., Topsham, Maine; **Elaine Irish**, 1160 Josephine St., Apt. 104, Denver 6, Colo.; **Leona Cross**, Detroit, Maine; **Richard Horne**, Kimball Ave., Mexico, Maine; **Merle Pendleton**, Dark Harbor, Maine; **Gary Sprague**, General Delivery, Freeport, L. I., N. Y.; **James Miller**, Brunswick Apts., Maine St., Brunswick, Maine; **David D. Brown**, Lot No. 30, 130 Forest Ave., Orono, Maine; **Leland Akerly**, General Delivery, Searsport, Maine; **Basil**

**Kellis**, 270 Ridge St., Glen Falls, N. Y.; **Richard L. Smith**, 2511 Alexander Ave., Richmond, Va.; **Jerrold Bodoff**, 664 Thwaites Place, Box 67, New York, N. Y.

The appointment of **Arnold M. Hutchins** to the post of office manager of the Waterville Osteopathic Hospital was recently announced by the hospital. **Arnold** is married and the father of three children. The family resides in Winslow, Brookside Trailer Ct., Cushman Rd.

**Jay G. Slipp** was married in July 1961 to **Joan A. Heffren '59**, at the First Baptist Church in Pittsfield. Matron of honor was **Leah Heffren Newhouse '54**, and **Dale Springer** served as best man. The Slipp's reside in Blaine, Maine.

**Thomas D. Crocker** is married to **Sylvia Mae Fleming** of York, S. C. The bride is studying for her Ph.D. in Philosophy at the University of Missouri where she has a teaching fellowship. **Tom** is studying at the University of Missouri for his Ph.D. in Natural Resources Economics.

Mr. and Mrs. **Raymond Martineau (Sandra Emerson)** have announced the birth of a son at the Rumford, Maine, Hospital on December 25, 1961.

A participant in the "Project Mercury" orbital space project was **Wayne B. Ward**. He is serving aboard the aircraft carrier *USS Randolph* which assisted in the recovery of the capsule.

**Sgt. and Mrs. Colby Whitaker** with their son, **Stephen**, have returned to the United States after two years in Hanau, Germany, where **Colby** has been stationed. Mrs. Whitaker is the former **Judy Richardson '56**.

**Peter Bastow**, married last June to **Jan Lancaster**, is teaching at East Lyme, Conn. Mrs. Bastow is also a teacher.

Following his discharge from the U. S. Army, **Duane Lancaster** has been working as a lab technician and has made plans to enter pre-medical studies this fall. We wish **Duane** the best of luck.

#### 1956

##### Class Agent Boarding

**JOSEPH OLIVER**

165 Eastman St., Concord, N. H.

New addresses: **Judith Burke Simonton**, Box 142, N. Salem, N. H.; **Harry Gordon**, R.F.D. No. 3, Dexter, Maine; **Norris Ashe, Jr.**, 580 Fisk Pl., No. Plainfield, N. J.; **Nancy Howe**, Box 184, Mullins, S. C.; **David Reed**, Box 253, Southwest Harbor, Maine; **Drena Proctor Beale**, High St., Clinton, Maine; **Barbara Vance Gaudern**, Rt. No. 1, Box W, Medical Lake, Washington; **Lt. William Daly, Jr.**, 207 Ruby St., Ozark, Alabama; **Sallie Sinclair Huot**, 68 Hewlett St., Roslindale, Mass.; **Judy Giovannucci McCrone**, 6996 79th Ave., Pinellas Park, Fla.

**Everett R. Drummond, III**, perhaps better known as "Dick," is in West Berlin with the Military Police. The address is 287 M.P. Co., APO 742, N. Y., N. Y.

**Thaxter R. Trafton** was named varsity basketball coach at John Baptist High School in Bangor. He will also teach business subjects and social studies. **Thaxter** is married and the father of two children.

Class Agent **Joe Oliver** and Mrs. Oliver have announced the birth of a son, **Kervin Martin**, on September 19.

**Philip Candelmo** was married to **Joan Ruth Scott** on July 1, 1961.

**Donald Fenton** is working for the M. L. Coffin Co. in Bangor. The Fentons, with year old **Brent Michael**, live at 69 Thornton Road, Bangor. **Don** is married to the former **Nancy Curtis** of Corinna.

Stationed overseas with the 28th Medical Hosp. Group is **Sylvester Burch**. APO 219, New York, N. Y. will help to reach him.



Back in school after service with Uncle Sam is **Ed Guiski**. He has been looking great this past winter as a high scorer on the Gorham State Teachers College basketball team.

**Reginald Haynes** was married in June 1961, to Helen Frances Schofield of Rockland, Mass. The couple is residing in Pittsfield, Maine.

Plans of a May wedding have been announced for Marilyn L. Moody of Belfast and **Robert Burbank**. Bob graduated from the New England Institute of Embalming, Boston, in 1957. He served two years with the U. S. Army, and is now employed with Folsom, Inc., Roslindale, Mass.

**Judy Burke Simonton** is employed as an executive secretary for the manager of Contracts at Infrared Industries, Inc., in Waltham, Mass. Daughter Mary-Ella is now two years old and beginning to talk. If Judy is to be believed, it is with a Maine accent, yet!! Let's hope so, Judy.

#### 1957

New addresses: **Rachel Connors Beall**, 4794 West Ave. SE, Washington 28, D. C.; **Mary Tarr Bush**, 2324 Bristol Rd., Holland, Pa.; **Joan Michaud**, 1828 Essex St., Bangor, Maine; **Harry Wilson**, Johns Hopkins Hospital, 601 N. Broadway, Baltimore 5, Maryland; **Roberta Cooley Vigue**, Hartland, Maine; **Charles Starkey**, 717 Emily Dr., Mountain View, California; **Robert Mills**, North Anson, Maine; **Phillips Baird**, 549 Wareham St., Middleboro, Mass.; **Dianne Starkey Khoury**, APO 949, Military Dispensary, Seattle, Washington; **Yvonne York Goodridge**, So. Apt. 12-E, Orono, Maine; **Burton Robertson**, Sagamore Rd., Rye, N. H.; **Edward Hoffman**, 5 Crestwood Dr., Suffern, N. Y.; Mr. and Mrs. **J. William Dean (Valerie Bowden)**, 21 Fireside Lane, Levittown, Pa.; **Harold D. Quiet**, Box 409, Guilford, Maine; **Donald Farnsworth**, 5 Florence St., South Portland, Maine.

Marriage has been in the news for the MCI Class of 1957 during the past year; The Alumnus lists those events that have come to its attention.

In an October ceremony **Roger J. Gagne** was married to Janice Patricia White in West Hartford, Conn. **Michael A. Riley '56** was best man, and **Tom F. Conroy** served as an usher.

**Doris Long** was married in June to John P. Ermatinger of Sault Ste. Marie, Michigan. The Ermatingers now live in Seattle, Wash.

**Charles Lewis** was married in June to Judith Frizzell of Cumberland Foreside. Charles is a member of the faculty at Stonington, Maine, High School.

**Peter J. Malia** is married to Sheila Mae Hopkins at Orono. The bride has been employed by the New England Telephone and Telegraph Co. in Portland. Peter is a 1961 graduate of the University of Maine.

At a double-ring ceremony in February, 1962, **Martha J. Menendez '59** became the bride of **Thomas D. Mourkas**. Maid of honor was **Donna Richardson '59**, and bridesmaids included **Dorothy Menendez '48**, **Sylvia Menendez '53**, and **Nancy Ross '59**. Tom is in the restaurant business in Bangor.

**Michael P. McCready** was married in November to Albertine Ayotte at Waterville. Mike is employed by Union Carbide Olefins Co. in West Virginia.

In September **Dennis F. Knowles** was married to Cyndra M. Wishart of Clinton. Dennis is employed by Pittsfield Woolen Yarns, Inc.

At a June wedding, **Eric P. Marsh** was married to **Kathryn Dykeman '61**. Bridesmaids included **Sandra Dunbar '61**, and Jay

**Slipp '55** was best man. Their address is 14 Main St., Camden, Maine.

**Marilyn Bates** was married in September to David Cook of Newport. **Gloria Bates Bilodeau '52**, sister of the bride, was matron of honor.

At a candlelight ceremony in August, **Samuel N. Goddard** was married to Jeanette M. Bard of Waterville. Sam is currently serving in the U. S. Army.

**Dale F. Hersey** and Judith Mendall were married in June. Dale is a ski patrolman at the Sugarloaf Ski Area, and he and Judy also are managers of a new ski-dorm serving the area.

St. Paul's Episcopal Church at Topsham was the setting for the marriage of **Charles E. DeWitt** and Ann H. Dudley. Charles is a graduate student at St. John's University in New York City.

The engagement of Virginia A. Burke of Lewiston to Lt. **Terrell C. Horne** was announced in September. Terry is with the U. S. Army. No date was set for the wedding.

The engagement of Jodelle Rolerson of Belfast to **Robert B. Downs** was announced in September. The wedding date was not set. Bob is a marine engineer with the Gulf Oil Corporation.

Currently teaching English in the Batavia, N. Y., high school system, is **Helen Kellis**. Helen's address is 20 North St., Batavia, N. Y.

**Daniel L. Roy** received a degree in Industrial Security from Michigan State University at Lansing, Mich., Dec. 7. Dan will begin service with the U. S. Marine Corps as a second lieutenant this October.

**David Pendexter** is serving with the U. S. Air Force.

Mr. and Mrs. James H. Samways (**Gloria Cregnoles**) announced the birth of a second daughter, Pamela Jean, on Wednesday, October 4, at the Sisters Hospital in Waterville.

**Bill Spencer** is teaching at Traip Academy at Kittery, Maine.

Now teaching at MCI is **David A. Mosher**. Dave, a reserve lieutenant in the U. S. Army, expects a tour of duty, commencing in June.

Pittsfield area graduates from the University of Maine last June included **Helen Kellis**, Bachelor of Arts in English, with distinction; **Lois A. Woodcock**, Bachelor of Arts in sociology (now doing social work out of the Brewer, Maine, office); **Dale F. Hersey**, Bachelor of Science in business administration; and **Michael P. McCready**, Bachelor of Science in mechanical engineering, with distinction.

Mr. and Mrs. Roger Martin (**Charlene Nickless**) have announced the birth of a son, Jerry J., at Dexter in September 1961.

**John K. Jewell** is a junior at the Massachusetts College of Pharmacy at Boston.

Elected president of the Pittsfield Business and Professional Woman's Club for the year was **Jeanette Ouellette Whitman**.

**Roger Gagne**, a 1961 graduate of the University of Connecticut, has been commissioned a lieutenant in the U. S. Air Force. Roger was named outstanding football player at the University, and was named to several "all" teams.

**Richard Johnson** is now with the Ingersoll-Rand Co. as a sales engineer, working from the Boston office. He graduated in 1961 from the University of Maine with a B.S. in Civil Engineering.

**J. William Dean** has graduated from the General Electric Apprentice Training Program at Lynn, Massachusetts. Now residing at 21 Fireside Lane, Leavittown, Pennsylvania, Bill is employed by the Missile and Space Vehicles Department in Philadelphia.

#### 1958

New addresses: **Robert M. Quinlan**, 691 Gardner Neck Road, Swansea, Mass.; **Terrence A. Smith**, Mexico, Maine; **Joyce Bennett Chase**, R.F.D. No. 1, Pittsfield, Maine; **Mahlon S. Lander**, Lake Ave., Newport, Maine; **James R. Carroll**, c/o Wright & Pierce, Box 433, Loring AFB, Maine; **Philip E. Lestage**, 99 Saco St., Westbrook, Maine; **David M. Adelman**, Mars Hill, Maine; **Harold K. Robinson**, 92 Spring St., Dexter, Maine; **Anita McConnell Whitley**, 131 College Ave., Waterville, Maine; **Donald S. Merrill**, Box 251, Greenville, Maine; **James H. Fish**, Box 5, Litchfield, Maine.

In August, **Elaine M. Brooks** became the bride of Richard Mower of St. Albans. Richard is employed with his father and brothers in the dairy business. Address: R.F.D. No. 1, Corinna, Maine.

In another August ceremony, **Exerene E. Dutil** was married to James H. Young of Ellsworth. The Youngs reside at Hillcrest Trailer Park in Scarborough.

**Donna M. Sprague '61** became the bride of **Philip K. Allen** on the last day of 1961, December 31. The couple will reside in Colorado, where Phil is stationed with the U. S. Army.

The marriage of Carol Anne O'Connell of Limestone, to **John L. Dudley** of Topsham, took place in Brunswick last summer. Bob is a senior at the University of Maine.

**Wynona W. Whitman** was married to Raymond S. Butera in St. John's Catholic Church, Bangor, in July. The bridegroom is employed by the Eastern Corporation in Brewer.

**Kathleen Joyce McGowan '60** became the bride of **Roland F. Frost** in May 1961. **Sandra Homestead '60** was maid of honor, and **Forest Frost '56**, brother of the bridegroom, served as best man.

The Sacred Heart Church in Waterville was the setting for the marriage of **Gloria Emma Lizotte** to **Robert N. Rancourt**. The bride has been a medical secretary since her graduation from MCI, and the bridegroom is a senior at the University of Maine.

Engagements of note: **Eleanor Lewis** to David W. Wadsworth; **Sandra A. Steward** to **William C. Burton**; **Carole B. Smith** to **Thomas S. Heald**; **Linda Marshall** to **Eugene M. Kenniston**; **Coralinn Spear '60** to **David DeWolfe Finch**.

**James B. Booker** has done a tour of practice teaching at MCI this past winter. He has been instructing in biology under the supervision of **Frank Haseltine '40**. Jim is a senior at the University of Maine.

Mr. and Mrs. **Richard Smith (Diana Pushor)** have announced the birth of a son, Stephen Richard, April 20, 1961. Their mobile home is on Rt. 2, Dom's Trailer Park, Winthrop, Maine.

Sgt. **Frederick I. Pinkham** has completed the disbursing specialist course at the Finance School, Ft. Benjamin Harrison, Indiana. Fred entered the Army in April, 1959.

**Dave Fernald**, as a co-captain for the Bowdoin College football Polar Bears, turned in some outstanding football performances last fall for Bowdoin coach, and former MCI coach, Nels Corey.

Last summer's program for **Patricia Haggerty** included a tour of Europe. Pat visited England, Ireland, Holland, Germany, Austria, Switzerland, Italy and France. She returned on the Greek Liner *Arkadia*.

#### 1959

New addresses: **Adrienne C. Cyr**, 77 Pine St., Presque Isle, Maine; **Sophia L. Kellis**, 4 Hodges Ave., Wellesley, Mass.; **Ervena**



**Brooks Leavitt**, R.F.D. No. 2, Pittsfield, Maine; **Roger Mason**, 51 Middle St., Farmington, Maine; **Nancy C. Ross**, 594 Farmington Ave., Hartford, Conn.; **Robert H. Parris**, 177 Hillside St., Roxbury, Mass.; **Lee Baptista**, 356 Chauncey St., Brooklyn 33, N. Y.; **Cora Wiles Boyette**, 171 Sigourney St., Hartford 5, Conn.; **Ray T. Bates**, 87 North Prospect St., Burlington, Vermont; **Jeffrey W. Jowdrey**, 914 Manor Road, Alexandria, Va.

**Sally Lee West** became the bride of Calvin F. Wellington in December, at the Trinity Episcopal Church in Lewiston, Maine. Sally's new address is 131 Walnut St., Wellesley, Mass.

**Corris A. Dunton '60** was married to **Robert Dundas** at Pittsfield. Bob is currently with the U. S. Air Force. Address: 108 Broad St., Sumter, S. C.

In November, **Louise E. Jones '61** became the bride of **Gerald L. Martin** in a double ring ceremony at Pittsfield. Gerald is with the U. S. Air Force.

**David Clark** was married in November to Nancy Weaver of Shreveport, La., at Shreveport. Dave is with the U. S. Air Force, stationed at Barksdale AFB, La.

At a double ring ceremony in October, **Doris Lizotte** was married to **Richard H. Jacobs**. Dick is a construction worker.

**Joseph A. Cosgrove, Jr.**, was married in October to Sheila R. Horne of North Vassalboro. Joe is employed by the Federal Trust Company of Waterville.

**Carolyn Ann Sensick** became the bride of **Philip H. Theriault** in May, 1961. **Paul Bertrand** served as best man. Phil is employed by the J. R. Cianchette Co.

**Elizabeth Anne Lassell** of Bradford and **Adrian E. Badger** were married at the United Baptist Church in Bradford. Adrian is serving with the U. S. Army.

The Fairfield Methodist Church was the scene of the marriage of **Fred E. Taylor** to **Eleanore M. Bridges**. Fred is employed with the C. Profenno Co. in Lewiston.

Engagements in the news: **Joan S. Bailey** to **Douglas Tilton**; **Estelle A. Sykes** to **David R. Pattee**; **Marilyn C. Blanchard** to **Velton L. Peabody**; **Freda Gagnon** to **Thomas M. Grant**; **Pauline J. Butler** to **Forrest E. Wright**; **Sally Heyn** to **Philip A. Short**.

An interesting summer in Europe has been spent by **Gordon Judd Evans** as a member of the Bates Tour. While hitchhiking with two friends near the East-West border, he was picked up by a West German Army truck and the trio was given an escorted tour to the barbed wire fence that separates the East from the West. Judd feels that West Germany is more like the United States than any other country in Europe because it is the most progressive.

Prominent on the University of Maine Campus is **Diane Nash**. Diane is a member of Alpha Omicron Pi Sorority, vice-president of the Associated Women's Student Government, vice-president of her dormitory, and was student chairman of the Student-Faculty Concert Series Committee.

On the basis of aptitudes, **Chester L. Buck** was assigned to the Air Force technical training course for weather observers at Chanute AFB, Ill.

**Thomas Hallee** is a Dean's List student at Providence College.

Recently returned from a tour of duty in Japan is **LCpl William R. Miller**. Bill is an aerologist with the U. S. Marines.

A 1961 graduate of Nichols College in Dudley, Mass., **Jared C. Finch** has been touring the United States. Jerry is a forestry graduate.

## 1960

New addresses: **Stanley G. Matthews**, Hampden Highlands, Maine; **Joel P. Stacey, Jr.**, 6th St., R.R. No. 1, Box 360, Old Orchard Beach, Maine; **George T. Costain, Jr.**, 717 Nunu St., Kailua, Oahu, Hawaii; **William J. Powers**, 812 Crescent Dr., Alexandria, Va.; **Robbie P. Bird**, 322 E. 51st St., New York 22, N. Y.; **Rae-Jean Goodwin**, 562 W. Fifth St., Azusa, Calif.; **Edward R. Emery**, 2541 SW 37 Ave., Miami, Fla.; **Pvt. Richard L. Colby**, 3921 Harrison Ave., Apt. 4, El Paso, Texas; **Patricia M. Long**, 2447 Pine St., Naples, Fla.; **David A. Ingraham**, Box 137, Presque Isle, Maine; **A 2/c William G. DeStefano**, 310th FMS, Box 1142, Schilling AFB, Salina, Kansas.

**Linda J. Ballard** became the bride of **Brian B. Eide** of Brainard, Minnesota, in September. The bridegroom is in the U. S. Navy. Their address is 3926 Lewis Ave., Phoenix, Ariz.

In August, **Phyllis Brooks** was married to **Thomas J. Braley** of Burnham, in a double-ring candlelight ceremony.

**Maureen Reynolds '61** was maid of honor and **Colby Moon '61** served as best man at the wedding of **Patty Reynolds** to **Percy R. Goodblood**.

**Carol Ann Davenport** became the bride of **Robert H. Higgins** at St. John's Catholic Church in Bangor. Bob is a student at the University of Maine.

**Keith Bennett** was married to **Myrtle L. Ramsdell** of Canaan. Keith is a meat cutter at the Pittsfield Frozen Food Lockers.

In a June ceremony, **Sonia Mitchell** was married to **Robert Erskine** of Dixmont.

**Charlotte M. Leavitt** became the bride of **Jack F. Woodbury**. The bridegroom is employed by the Northeast Shoe Co. in Pittsfield.

**Avis M. Ames** became the bride of **Alfred E. Paresson** of Portland. Mr. Paresson is employed by the Coca-Cola Bottling Co. at South Portland. They reside at 301 Ocean St. in that city. Maid of honor at the wedding was **Marilyn Wilber '60**.

In May 1961, **Sandra L. Davis** became the bride of **Clarence C. Bonner** of Milford, N. H. Mr. Bonner is manager for Publisher's Continental of Michigan City, Indiana.

Engagements in the news include: **Carol E. Sedgwick '62** to **Norman C. Cropley**; **Shirley E. Gilmore** to **Forrest H. Wing**; **Ellen R. Smith** to **Carleton D. Brann**; **Delight L. Stinson** to **Richard L. Colby**; **Gwendolyn S. West** to **Donald M. Page**.

**Michael Robinson** has been appointed organist of the First Baptist Church of Pittsfield. Mike, a student at Colby College, travels to Pittsfield each Sunday for this work.

Preparing for a career in architectural engineering technology at Wentworth Institute in Boston is **Floyd A. Lawrence**.

**Rochelle Feldmann**, a student nurse at Boston City Hospital, spent a week last summer in California as a delegate to the National Conclave of Newman Clubs. Rochelle represented the Hospital Nursing School's Newman Club of Boston, and won the trip on the basis of an essay.

**Coralinn E. Spear**, a junior student at the Melrose-Wakefield Hospital School of Nursing, was on affiliation from February to May of this year at the Children's Hospital in Boston.

At the University of Maine, **Allen Fer-nald** was chosen for membership in the 109-voice University Chorus. Allen, a tenor, will appear with the Chorus at campus concerts and occasional off-campus appearances.

Employed as a technology pathologist in the Salem, Mass., Hospital is **Marilyn Wilber**.

**Roger P. Nightingale** is completing his second year at the University of Iowa.

A member of the Naval Reserve Officer Training Unit at Dartmouth College, **Mike Parker** spent several weeks last summer aboard the anti-submarine warfare support aircraft carrier *USS Lake Champlain*. Mike reports a good cruise, with several port calls being of particular interest.

## 1961

*Class Agent*

**JUDY MITCHELL**

Nichols St., Pittsfield, Maine

**Sally Anne Bradford** was married to **Jerry Withee '58** at Newport. The double ring ceremony was performed by the Rev. **Alice Townsend Hart '18**.

**Nancy Ann Bickford** of Brewer was married to **Donald E. Anderson**. Don is a student at the Massachusetts College of Pharmacy at Boston.

**Judith D. Frederick** and **Gary W. Hanson** were married at St. Agnes Catholic Church in Pittsfield. Gary is attending the University of Maine.

**Janase Cookson** and **Robert Rich** were married at the Burnham Baptist Church. Janase has been employed by the Batchelder Elms Nursing Home in Burnham.

1961 engagements in the news include: **Linda E. Brewster** to **Kent A. Twitchell**; **Nancy Lee McIntosh** to **Thomas F. McLaughlin**; **Sudie F. Randall** to **Norris Stanley**; **Donna Rae Morton** to **Justin A. Ryder, Jr.**; **Marilyn E. McCobb** to **William E. Reed**.

Note to '61: The Alumnus will be pleased to answer all requests regarding new addresses for members of your Class. We have most of them, we hope, but space does not permit their inclusion here.

## 1962

### FACULTY TRUSTEES

**Edward R. Williams**, instructor in math at MCI 1960-61, has been appointed to the staff of the Combat Operations Research group, U. S. Continental Army Command. Technical Operations, Inc., furnishes civilian scientists who comprise the staff of the combat operations research group.

**Mrs. Paul Coolidge**, longtime friend of MCI and former faculty member, has been appointed to the Public Health Service in Pittsfield, Maine.

Chosen for missionary work in Haiti, the Rev. **Harley Bye** of the Pittsfield Church of the Nazarene and a part time instructor in French and English at MCI, will leave for his new assignment with his family, on or about September 1, 1962.

**Edward Malcolm**, instructor in French 1939-40, has joined the clinical psychology staff at the Veterans Administration Center in Togus, Maine. He received a Ph.D. in Clinical Psychology at the University of Michigan in 1951, and for ten years worked on the staffs of various defense agencies in Washington.

The Alumnus regrets to report the death in June 1961 of **Albert Grassie**, instructor in mathematics 1945-46. He had been teaching at Sanborn Academy in Kingston, N. H. Toxic poisoning was given as the cause of his death.

Presently principal at the Burlington-Harwinton Regional High School in Connecticut is **Russell Fitz**, instructor at MCI in the early '30s.

**George Johnson**, director of athletics and science instructor 1940-42, now resides at 259 Walnut St., Massapequa Park, N. Y.



Trustee Milton E. Lindholm, Director of Admissions at Bates College and a former member of the MCI faculty, was elected president of the Eastern Group of Admissions Directors on October 23, 1961.

Miss Lena Marsh, former member of the board of trustees and longtime friend of the school, may now be reached at Box 261, Skowhegan, Maine.

The *Alumnus* wishes to take this opportunity to welcome three new members to the MCI Board of Trustees. The election of Karl R. Philbrick and **Walter F. Ulmer '23**, both of Bangor, and **William A. Macomber '24** of Waterville, was announced in August by Dr. Harry W. Rowe, President of the Board of Trustees at MCI.

Mr. Philbrick, a native of Skowhegan, is Vice-President, Secretary, and Trust Officer of the Eastern Trust and Banking Company, Bangor, with which he has been associated since 1925. He attended Skowhegan schools and was graduated from Bowdoin College, A.B., in 1923 and from the Harvard Graduate School of Business Administration, M.B.A., in 1925.

Walter F. Ulmer, born in Hampton, Maine, is presently Business Manager of the Bangor State Hospital. He is a graduate of Bangor High School, Maine Central Institute in 1923, and Bates College, B.S., in 1928. He has done special work at North-

eastern University, Cornell University, and Colby College. A colonel in the U. S. Artillery, he holds the decorations of the Silver Star, Bronze Star, Army Commendation, and Medal of Metz.

William A. Macomber, a native of Fall River, Mass., is Director of the Division of Adult Education and Extension at Colby College. He graduated from MCI in 1923 and from Colby College in 1927. During long service in the field of education he has been athletic director and coach at Rockland and S. Portland High Schools and sub-master and later principal at Cony High School in Augusta.

## Cooper Addresses Key Club Assembly

The winter-weary students at MCI were treated to the stimulating spectacle in March of Thurlow Cooper '53 prowling the old campus, and were doubly rewarded by hearing him speak of his experiences as a member of the New York professional football Titans at an assembly sponsored by the MCI Key Club.

Coop, a big boy now, at 230 well-knit pounds, charmed the girls with his poise and urbane manner, and was attentively heard by the boys as he spoke of his football activities since graduation from MCI.

Now 28, a good age for a football player, and an age that he will probably hold for official use until the end of his pro career, Coop put in a brilliant four years at the University of Maine. Under coach Hal Westerman he was named an All-State Series, All-Yankee Conference, and All-New England end his senior year, and was also a member of the Northern All-Stars in a Blue-Grey post season bowl game.

After shuttling from the New York Giants to the Cleveland Browns and then to the Canadian League, Coop came into his own this year as a member of the Titans. He was a game starter in 4 exhibition games and 14 regular season melees. He played offensive end.

Known as a tough competitor in a tough league, Coop volunteered the following: "You have to be alert to stay alive. Your opponents aren't fooling when they knock you down with a block or tackle. You simply cannot relax in a game or you'll be floored by a 'suckerblock' which can hurt greatly." Possibly an understatement.



Getting football advice from "Old Master" Thurlow Cooper '53, are Prepper footballers (l. to r.) Ron Rogerson of Brewer, and Charlie Freeman of Waltham, Mass. "Coop," a member of the professional football New York Titans, found it hard to break away from questioners after addressing the student body at a Key Club sponsored assembly in March.

Thurlow has been teaching this winter in the Portland school system, and has been keeping in shape by skiing at every available opportunity. Plans for the future? Perhaps coaching in high school when the pro wars prove too strenuous, a day that all Coop's many MCI friends hope is long away.

## Notes from the Campus

*From Page 17*

Hinman, Jr., vice-president. For Weymouth Hall: David Kohr of Lewiston, president; Mark Flight of Gorham, vice-president; Charles Freeman of Waltham, Mass., secretary; and Larry Hatch of Salem, N. J., treasurer. For Alumni Hall: Michael Savage of Bangor, president; Preston Carter of Etna, secretary; and Peter Cushman of Oxford, treasurer.

**HONORS PARTIES . . .** The quarterly honors parties, given for high ranking students at the end of each scholastic quarter by Principal and Mrs. Stanley, have become, over a few short years, an eagerly anticipated event. Not only is the food good and company relatively select, but carefully chosen guest speakers have provided immensely interesting evenings. At the first of this year's parties, Mr. Paul LeVeque, Field Supervisor in the Division of Family Services of the State of Maine Department of Health and Welfare, discussed with the group the general topic of social service as a career. Of equal interest, at a later date, was Mr. Wayne P. Libhart, Scholarship Chairman of the Harvard Club of Eastern Maine, who discussed the particular problems at Harvard in regard to admissions and scholarships.

## SARAH E. TOOTHAKER

It is with the deepest regret that the *Alumnus* must report, belatedly, the death of Sarah E. Toothaker, a loyal and steadfast friend of MCI, in August 1960, at her summer home in Dixmont after an illness of several months.

Employed at MCI for 16 years, she is fondly remembered by scores of former students and co-workers.

Surviving are a daughter, Miss Eleanor Toothaker '30 of Pittsfield, and several nieces, nephews and cousins.



REGISTERED PROFESSIONAL  
ENGINEER - MAINE

PHONE: 487-2432  
487-5502

GUY SUSI  
CONSULTING ENGINEER

17 SUMMER STREET  
PITTSFIELD, MAINE

May, 1962

Dear Fellow Alumni:

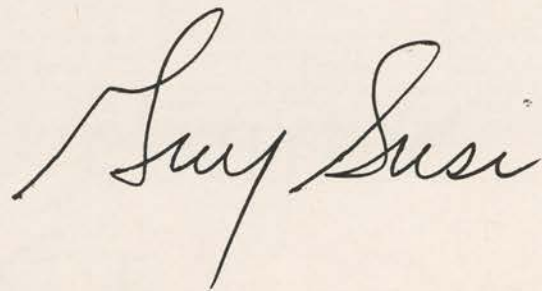
When scholars of a future generation come to evaluate our achievements against the landmarks in the history of mankind, one wonders if the principles of modern education—to insure that our citizens be informed and hence responsible—will not occupy an important niche. Certainly, their importance cannot be minimized, and our School as an institution essential to our civilization has an assured position.

A school is all things to all people. To the school administrators and teachers it is their “office”; to the school-age citizens it is a second home during their formative years; to the alumni it is a symbol and source of pride.

We, the Alumni of M.C.I., can point with pride at the growth and development of our School in the past decade. This has resulted not only through the addition of more adequate facilities but also through the attainment of higher scholastic standards. Cooperative action among the school administrators, the teachers and us, the Alumni, has been the motivating force in reaching this stage in our ultimate objective.

We must continue our interest and support, both moral and financial, in order to assure the extension of such growth. Only through our persistent support can we look back, in the future, with the same pride for our School.

Sincerely,

A handwritten signature in cursive script, reading "Guy Susi". The signature is fluid and elegant, with a long, sweeping underline that extends to the left.

Guy Susi '35  
President, MCI Alumni Association





*Twelfth Annual*

# MID-SUMMER REUNION

HONORING 2's AND 7's

Saturday, August 4  
1962