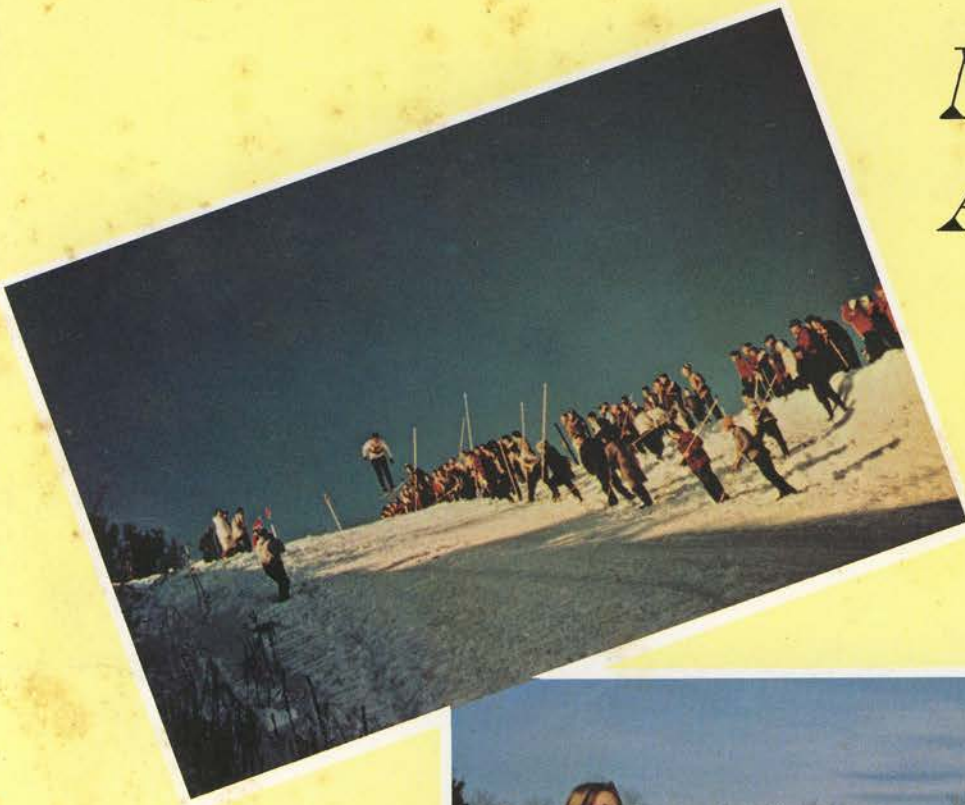


# ***MCI*** ***ALUMNUS***

VOLUME XVIII, NUMBER I

JULY 1967

PITTSFIELD, MAINE



Published by

THE ALUMNI ASSOCIATION OF MAINE CENTRAL INSTITUTE IN THE  
INTEREST OF THE SCHOOL AND ITS FORMER STUDENTS



MAINE CENTRAL INSTITUTE  
*Founded 1866*  
PITTSFIELD, MAINE

OFFICE OF THE HEADMASTER

9 May 1967

Dear MCI Alumni:

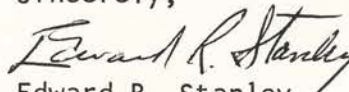
At first thought, a school's 101st year might seem almost anticlimactic, when one recalls even the highlights of the centennial observation in the previous year. Actually, though, having paused to celebrate an important birthday, the School has forged ahead into its second century. We are making progress in many areas - curricular and extra-curricular alike. Our students once more are making an excellent record in college admissions; some of them have already been the recipients of fine scholarship awards. Our faculty is performing effectively, and the courses they are offering seem to be meeting the ever-changing demands of the times. In the extra-curricular areas, our music program is developing remarkably, as I am confident those of you who have been privileged to attend one of our concerts here or at other schools would be glad to testify. In sports, MCI has taken a major step in adding lacrosse to the roster of spring sports. The enthusiasm with which this step has been greeted by many of our boys has been most encouraging. The Outing Club director, aided by a number of the faculty, is confident the Club's Moosehead Lake camp will be ready for use next fall. The programs at the Johnson W. Parks Golf Course on the North Campus are in full swing, aided this year by the completion of a really fine clubhouse building for the recreational purposes of our students and faculty as well as for the summer patronage of the course.

It has been, then, a busy year at MCI. In a sense, it has also been a year of transition, as MCI prepares to open its doors next September without the majority of the local day freshmen. A new junior high school, erected by S.A.D. #53, will provide a ninth grade program for the vast majority of the first year students from Pittsfield, Burnham, and Detroit. MCI welcomes this move as an opportunity to strengthen its own program for boarding boys in the five classes, and for tenth through twelfth grade local day students, since the School will not be reducing its faculty and hence should be able to make even better provision for its students than has been possible with the heavier enrolments of the past.

In the years ahead, MCI will continue to strive to merit the support and loyalty of its alumni body. MCI has been most fortunate in its first century to enjoy an excellent rapport with its former students. All of us at the School look forward with confidence to a second century marked by equally cordial relations.

I hope to see each of you at the Mid-Summer Reunion on Saturday, 5 August. Until then, or until you can plan an interim visit to the campus, my very best wishes for your health and happiness.

Sincerely,



Edward R. Stanley  
Headmaster





*Maurice L. Earle served as dean of men, coach and teacher at MCI from 1945 until 1953. He was a native of Litchfield, Maine, a graduate of Litchfield Academy and Bates College, where he also received a Master's degree. He taught at New Salem (Mass.) Academy, was principal at Camden High School and was principal at Wilton Academy prior to his distinguished work at MCI.*

*Friend and colleague Edward R. Stanley writes the following:*

## MAURICE L. EARLE

### *An Appreciation . . . . .*

**F**IRM IN PRINCIPLE, fair in judgment, Maurice L. Earle was first a teacher; a teacher he remained throughout his life — even after he retired from active association with MCI in 1953. Thorough in all that he did, he insisted on thoroughness in his students, whether they were involved in a knotty problem in the history of the United States, engaged in studying in Alumni Hall during a cold winter evening, or entered in an event in a dual meet in track. The example he set for his students was not the least of his contributions to their lives and to the schools he served. Never asking that anyone — student or younger associate — do anything he could not or would not do himself, the Dean was devoted to the principle that the good school had lessons for everyone in every area of student activity. He worked hard to make his own significant contribution

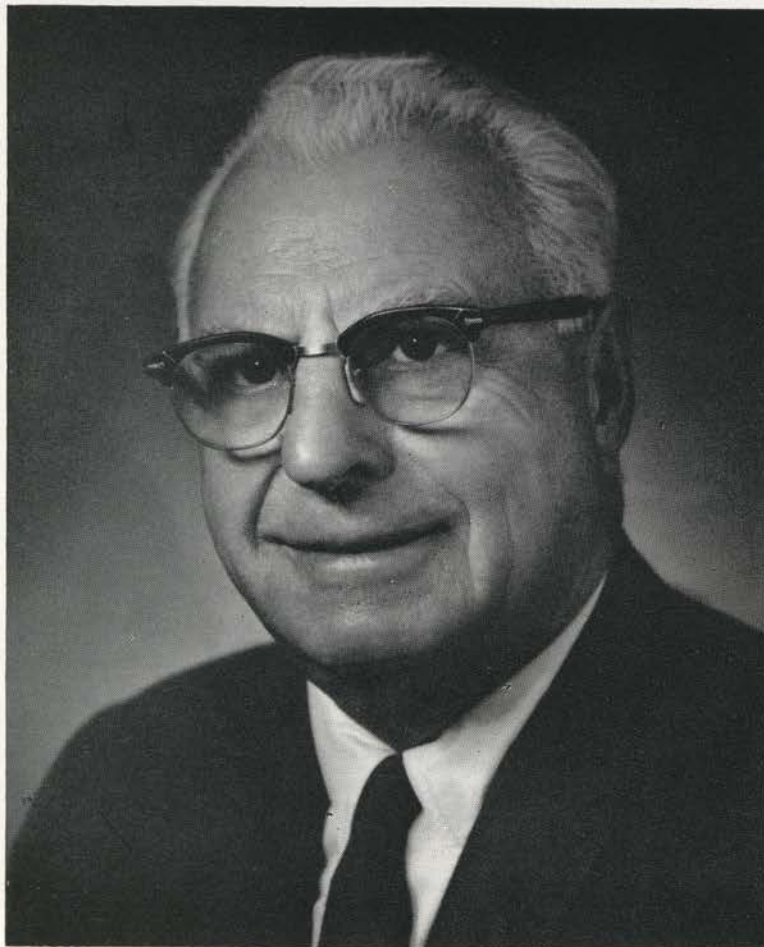
to whatever task confronted him, and he never shirked a responsibility. Maurice Earle was a loyal friend, a conscientious fellow worker, a dedicated teacher. He was all these things in an age when truly dependable men, willing to devote themselves wholeheartedly to the needs of their students, are far from commonplace. MCI is the richer having been privileged to have this man in a key position on its staff for eight years. He was missed when he left the School's employ; the mark he made on so many young lives, on the attitudes and philosophies of his colleagues, and on the programs and policies of the School live on. Here was a workman who labored hard and who never needed fear any judgment based on his product.

EDWARD R. STANLEY



## MCI SALUTES

### *Warren S. Churchill*



WARREN S. CHURCHILL considers that he retired as an oil industry executive in 1953. No one who knows him will agree. Warren maintains offices in Tulsa, Oklahoma that are not purely for show. He is also owner and operator of Myrtle Hill Farm, Colcord, Oklahoma — not, from all reports — a small spread.

A native of Yarmouth, Nova Scotia, his formal education was confined to the state of Maine. He attended Waterville High School, MCI, Colby College and the University of Maine. Possibly the most important instruction came later . . . the hard way.

He served overseas for two years in World War I, and then turned his attention about as far West as he could. Warren pioneered oil drillings and oil production in both the American and Canadian Rockies; his adventures, even by modest description, should be written by a later Zane Grey.

He and Mrs. Churchill, the former Myrtle Margaret Sylvester, each year forward the educational goals of deserving Oklahoma youngsters. There could be no better service.

MCI is proud to salute Warren S. Churchill: oilman, farmer, gentleman.

## The Date To Note!!

SATURDAY, AUGUST 5 will again see the annual Mid-Summer Alumni Homecoming at the old stamping grounds — the MCI Campus. We can't promise that the affair will be as spectacular and memorable as last year's 100th Birthday Celebration, but it certainly will be attempted.

A full schedule of events has been planned to keep those who wish reasonably active. The rest — and usually the majority — will be allowed, as always, to set their own pace. No alumni parades with strange hats, no lectures or softball games in the blazing August sun.

Good talk, good food, good memories, old friends, old buildings, new friends, new buildings: these make an MCI Reunion.

Your formal invitation will arrive shortly — but make plans now!

**The MCI Alumni Association is sincerely grateful for the work of E. Burnell Overlock '24 during his presidency of the Association from August 1966 to August 1967. In spite of other pressing work — principalship of a large junior high school, no less! — he has directed the affairs of the Association through its finest year. To E. Burnell Overlock we offer:**

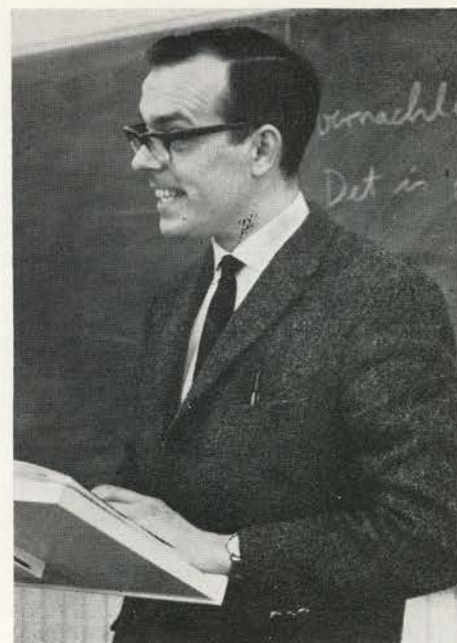
**Thanks. Nicely done!**



One of many singing groups gathered during the fall and winter were "The Four Folk," a smiling cluster that included Janice Steward, Kathy Christie, Linda Dow, Nancy Christie. Considered great during their few appearances.



*Otmar K. E. Foelsche, instructor in German at MCI, is a doctoral candidate at the John F. Kennedy Institute of the Freie Universitaet of Berlin, Germany. He joined the MCI staff in 1966, plans to remain for the academic year 1967-68. A native of Berlin, his present residence — when home — is Bremen. Mr. Foelsche is well qualified to contrast American and German secondary education; he has been both an exchange student and practice teacher at South Portland (Maine) High School.*



## EDUCATION ABROAD . . . Germany's Way

COMPARISONS of various educational systems have often been attempted, but they will always remain questionable undertakings. They leave the reader in a state of confusion rather than illumination. The reasons for this are obvious: No standards are accepted among the specialists for measuring absolute achievements of one educational system, transplantations of the system of one country into another country have almost always been unsuccessful, and last but not least we have to face the fact that educational systems are hardly ever static units. Any kind of comparison, therefore, suffers in validity because of the inconsistency of the dynamic forces present in any educational system, and because of the variety of approaches which are necessary to deal with these complex issues. Speaking from a general viewpoint: Any age group between 5 and 65 is, roughly, engaged in some kind of educational program, depending on the individual's relationship to the society. This paper does not attempt to deal comprehensively with all aspects of educational approaches in Germany. The author wants to limit the discussion to some aspects of education for the age group between 6 and 25. Furthermore he wants to put emphasis on the school system and will only devote small space to the university system.

A first methodological question which has to be raised is that of the

"system." There is no such thing as a system — neither in any European country (with the exception of France) nor in the United States, when we talk about systems in terms of nationwide systems.

On the other hand, there are some traditional conceptions that supply a framework for educational systems. We shall therefore, first of all, analyze these traditional concepts and their presence in Germany's education.

Almost all European systems, the German system included, have a common background, which is also, historically speaking, the background of any American system. This background consists of the universal medieval approach to education. This approach had the basis of one common language — Latin and the basis of one common authority — the Church. With the weakening of the Church's position during the late Renaissance and especially during the various reform movements, secularization and national elements were incorporated in the existing educational institutions, whereas the basic objectives were not changed.

We shall have to understand these historical objectives in order to comprehend today's set up in Germany. During the medieval period it was necessary to train an **elite** for both the **Church** and the **State** respectively. The individuals undergoing this training re-

ceived all the available knowledge of their times, i.e., a thorough training in the classical disciplines, theology and even sciences. The number of educated individuals required by those societies was extremely small — their authority, from a twentieth-century viewpoint, unbelievably great. It is therefore not surprising that during that period a rigorous selection of the most able students took place. This aspect of **selection** is still an essential part of the German system, which we'll consider later on.

The second historical aspect which deserves attention is that of the **control** of educational institutions. The lessening of Church control did not necessarily mean more freedom for educational institutions, it simply meant that the states took over the responsibility of the Church. The control itself remained as rigid as ever before. From a twentieth-century viewpoint it simply means that education was considered the business of the nation. This concept, at least to a large extent, is still true for almost all major European countries. Several attempts have been made in the meantime to weaken state control, but only in the case of Germany, under certain extraordinary circumstances, this attempt was at least partially successful.

The third historical aspect which we have to consider is that of **universality**



in education. As has been pointed out earlier, medieval times had equal emphasis on classical, theological, and scientific training around the standards of the Church. This ideal concept of being able to provide the individual with all available education cannot be maintained any more. Nevertheless universality is still present — under a different name; *Allgemeinbildung* (general education). *Allgemeinbildung* is the concept of providing the student with a basic training in all areas. For a majority of European educators the scientist needs to have a literary education, must know some foreign languages, must have some training in history and in the classics, as well as the philologist needs to have scientific training.

I consider these three aspects (selection, control, and universality) the most important ones of the German educational systems. There are of course other aspects which could be considered, but space does not permit any lengthy discussion of those.

The most interesting question for Americans is the administrative set up of the German systems. Roughly speaking these systems have been in existence since 1949. From 1945 to 1949 all educational systems were under the control of the Allied Powers. Before that the Nazis, the Weimar Republic, and the different German states under the set up of the Hohenzollern Empire controlled education. The number of entirely different governmental systems from 1871 until today explains to a certain extent today's systems which are somewhat disconnected from the great historical tradition. On the other hand, the extraordinary historical situation in Germany in 1945, made Germany into an experimentation ground for the educators of the Allied Powers. Since everybody realized that only education contained the hope of changing the "evil" Germany forever — various controversial attempts were made, but only one lasted. The Federal government was not authorized by the constitution of 1949 to get engaged in cultural affairs. Education was declared as constitutionally belonging to the governments of the states of the Federal Republic. So Germany has at this moment 11 (including Berlin — which is a state of the Federal Republic according to the German interpretation of that complex situation) different systems of education. There is, of course, some kind

of nationwide authority: the *Ständige Konferenz der Kultusminister* (permanent conference of the secretaries for culture). The decisions of this conference are by no means laws. Even a unanimous decision of this body has to be ratified by the different state legislatures before it will become a law in a certain state. Each secretary runs his state with a number of *Schulräte* (school advisors — a non-political job). Teachers and principals are directly responsible to these *Schulräte*. A good *Schulrat* is constantly visiting classes and principals, giving advice, etc. Any teacher in a public school in Germany will be appointed for lifetime after a period of 5 years of successful teaching. The teacher is therefore a state employee, he automatically will belong to the state health insurance as well as to the state retirement plan. Salaries are not competitive. They depend on the size of the community, age, and number of children.

For an American observer there doesn't seem to be a place for a private school in this system. This is nearly correct. The number of private schools is extremely small. First of all, any larger community in Germany has a school for the handicapped and the slow learners. To transfer a child to these schools is relatively easy, and does not confront the community with any extraordinary expenses. Secondly, diplomas of any kind in Germany are only recognized when they are signed by a state official. It is extremely difficult for private schools to keep up to the standards of the public schools. Private schools which send their students for examinations into the public schools, where final examinations are always state supervised, can extend recognized examination papers.

Another question which might be raised from an American observer is the question of the parent's influence. This system doesn't have much room for the parent's influence. German schools have groups which are to a certain extent comparable to the American PTA — but these organizations cannot exert any influence upon the educational facilities or the methods of the school. They can only participate in extracurricular activities or voice their opinions through the press or other means of mass communication.

After I have tried to sum up the administrative set up we can finally take a look at the German schools, their different levels and all other practical

sides. Basically the same entrance qualifications for elementary schools are used in Germany as in the United States. For the next four years of elementary school there are also hardly any differences between the United States and Germany. The first decisive difference comes up at the end of the fourth grade. Students who have shown superior intelligence will be recommended with parents' approval to institutions of higher learning (*Gymnasien*). Other students whose parents think or whose teachers believe that they could also qualify for these institutions of higher learning have to undergo thorough testing. About 17 to 20% of the whole student body will be accepted by these institutions. The remaining students will continue their education at the elementary school — which is, by the way, not called elementary school in Germany but basic school (*Grundschule*). Every student has to continue his education until he is sixteen. After the eighth grade quite a number of students drop out in order to learn a trade — they nevertheless continue their education in vocational schools thereby fulfilling the requirements of the law. Another 20% of the total student body will also leave the basic school to receive a somewhat better training at the so-called middle schools (*Mittelschule*). These students receive a diploma after the tenth grade, which entitles them to enter junior colleges and engineering schools once they have successfully completed an apprenticeship.

This separation of the gifted from the average and slow students is obviously one of the most debated issues in the German educational systems. (East Germany, France, England and other European countries use a similar system!) This separation after the fourth grade is not any more applied in a very rigid way. Practically any students who qualify at a later date can move over to the *Gymnasium*. Which means that the so-called late developers are not neglected by the system. Another argument is based upon the fact that this separation nourishes the development of classes in the society. But observers mostly overlook the fact that the separation is based entirely on intelligence. The most important reason for this separation is the need for a special pre-university training. Only students who have successfully completed the *Gymnasium* are allowed to enter German universities.



This separation does not only include a change of school but also a change of teachers. All teachers in the *Gymnasium* are university trained, all other teachers are trained in teachers' colleges. (This, by the way, has caused the ironic situation that basic school teachers are much better trained in regard to methodology than gymnasium teachers.)

Starting with the fifth grade two entirely different types of schools are available in Germany. The basic school caters to the needs of its students. Students in these schools receive some training in language and sciences — but no good program has been developed so far which would incorporate the vocational needs of the students in the academic necessities. This section of the German systems is therefore the most debated part of the educational systems in Germany. The *Mittelschule* offers a program which is at least comparable to the education which is offered at a typical (if such thing exists!) American high school in the upper levels.

Very different, on the other hand, is the program offered at the *Gymnasien*. First of all, nothing is offered — practically everything is required. The students start in fifth grade with the following subjects: (numbers in parentheses indicate periods per week — Saturday, by the way, is a regular school day!) German (4), Mathematics (4), first foreign language (4), sports (2), history (2), Music (2), arts (2), biology (2), government (2), geography (2).

In grade 7 the second foreign language is introduced (4). In grade 8 physics (2), in grade 9 chemistry (2). In grade 11 the students have a choice of entering the philological department or the natural sciences department. Accordingly the number of periods for the languages will be cut down or the number of periods for natural sciences will be raised. The basic change is reflected by the introduction of the third foreign language (3) in the philological department, and the introduction of lab courses in chemistry, physics, and biology in grades 11, 12, and 13.

The classes have about 15 to 25 students. Contrary to American conceptions, the class stays together as one unit throughout these 9 years from grade 5 to grade 13. These classes also have their assigned rooms — the

teachers have to go from classroom to classroom.

A student has finished *Gymnasium* after he has taken the final exam: the *Abitur* (maturity examination). This exam reflects the standards of this type of school.

The exam has two parts — oral and written. In the written part the student has to write a German composition. He is given 4 topics and has to select one of them and write in 6 hours a composition of approximately 1500 words. This section of the examination is highly characteristic for the emphasis which is put upon German as a subject. The next section of the written exam is in the first foreign language (mostly English). The teacher reads a story in English to the students and the students have to retell the story with their own words in about 3 and a half hours.

The next section contains four mathematical exercises in differential and integral calculus, in analytical geometry, and in spherical trigonometry. The last section of the written exam is either in one of the natural sciences or in the second foreign language, depending on the department the student belongs to.

The written exam is followed by the oral exam — about four weeks later. The students will be examined in at least one subject they do not know in advance. Mostly they have to face the examination commission in two or three subjects for 15 minutes each. The commission consists of teachers and school advisors.

Another question which has to be raised in connection with the *Gymnasium* is that of evaluation and grading. Flunking either German or mathematics means automatically flunking all other subjects. A student may flunk any other subject if he has sufficient "balance" in either German or mathematics. Two subjects may be balanced — any higher number means that the student has to repeat the whole year, i.e., all subjects.

The German schools do not grade with percentages. They use grade 1 through 6. 1 is the grade for excellent — which is very rarely given. 2 is the grade for superior achievements, way above average. 3 is the grade for average achievements. 4 is the grade for barely passing achievements. 5 is not passing any more, but indicates that the teacher believes that the student is able to do the work but is just lazy. 6

is given to students who are simply unable to perform according to the required standards. One 6 on a rank card means automatically flunking the whole course. A 6 cannot be balanced.

In addition to this a grade for behaviour and class participation is given on all report cards. (Report cards are issued twice every year.)

The few facts which I have presented here do not, of course, present an absolutely reliable picture. Let us therefore consider the problems which are discussed in present day Germany in regard to its educational facilities. It is generally recognized that the education supplied for the lower 80% of the student body in Germany is not any more sufficient. Several attempts are being made to enlarge the size of the middle schools and to upgrade standards in those schools. Another attempt is being made to increase the time which the student spends in basic school. Some of the German states have already basic schools up to the tenth grade. Another general complaint is that the universal approach to education in the *Gymnasien* is outdated — it's even called a waste of time and money. Educators nowadays ask for specialization at an earlier time, not after the *Abitur*.

The most debated issue in German education is the university. The German universities — once the nation's pride — are now no longer able to fulfill the basic needs of the nation. It would require too much space to point out all the arguments — the simple fact that it takes about seven years to educate an English teacher in Germany shows that there is a tremendous need for a change. This change is well under way at this very moment. The general tendency is to reorganize studies at the undergraduate level. The future set up at the undergraduate level at German universities will be very similar to American universities.

As was pointed out at the beginning — comparisons between different educational systems can hardly be done unless there were some absolute standards. From my subjective viewpoint, the *Gymnasium* is an excellent example of higher education for the gifted students. The rest of the German system needs definite improvement. Looking at the American system, the problem is turned upside down. Education for the masses is offered in excellent institutions, whereas the gifted students are somewhat neglected.



# SECRETARY'S REPORT

AUGUST 6, 1967

100th Anniversary Celebration —  
16th Annual Mid-Summer Reunion —  
Annual Report.

Senator Margaret Chase Smith, a trustee of MCI, addressed more than 600 alumni and guests at the annual Alumni Banquet and observance of the School's 100th Anniversary. Senator Smith was introduced by Headmaster Edward R. Stanley.

In her address, in which she praised MCI for its century of service to Maine and New England, Senator Smith concluded: "For the strong and lasting structure of MCI is built upon the solid foundation and footings of the integrity it so magnificently exemplifies and symbolizes — an integrity of such stature as to make me one of the fortunate trustees to be so proud of this great institution — Maine Central Institute — MORALITY — CONSCIENCE — INTEGRITY."

The address culminated a day of activity that began with registration at the Powell Memorial Library. In the afternoon the program included the rededication of Founders' Hall, formerly the Institute Building, the dedication of the Ruth Plummer Cook Music Center and a cornerstone ceremony at the newly completed boys' dormitory. A reception, honoring the Golden Anniversary Class of 1916, was held under the campus elms, supervised by Mrs. Edward R. Stanley.

William S. Coffin '33 was elected president of the Alumni Association at the business meeting following the banquet. Also elected were Norris Cianchette '40, vice president; Alma Patten '09, treasurer; Eleanor Toothaker '30, secretary. Named to the executive board of the Association were retiring president E. Burnell Overlock, Dr. Richard Berry and David Hall. Elected to the nominating committee were Jeanette Fitts, Gerald Fitts and Neil Wright. E. Burnell Overlock '24 presided over the business meeting, and at its conclusion was presented a gavel by Dana W. Sweet, executive alumni secretary.

Seated at the head table were Senator Smith, Dr. and Mrs. Harry W. Rowe, Mrs. Geraldine Mann Brown, Sanger M. Cook, Mr. and Mrs. Dana



GIANT BLUE AND YELLOW CANOPY served as a resting place during the day and as dining hall in the evening at last summer's historic Reunion and 100th Birthday Party.

W. Sweet, Mr. and Mrs. E. Burnell Overlock, Headmaster and Mrs. Stanley. Music during the program was presented by Dr. Robert Parker.

A social hour at the Parks Memorial Gymnasium and an informal dance at the club rooms of the Peltoma Fish and Game Association completed the day's activities.

Respectfully submitted,

ELEANOR A. TOOTHAKER '33  
Secretary  
MCI Alumni Association



Valerie A. Stein made a most charming Key Club Sweetheart at the annual Fall Prom. Val is the daughter of Dr. and Mrs. Ernest W. Stein, Pittsfield.

Mary Sweetland, Class Poet for MCI '05 and MCI Poet Emeritus, (*poetess* might be the better word) composed the following work after hearing of last summer's Reunion from brother Wayne, MCI '12. We think you will enjoy it.

## REUNION

BY

Mary Sweetland

You searched my face as if to see  
What all those years had done to me,  
And I searched yours in swift review  
Of what those years had done to you.

When we as classmates had to part  
A sadness fell on each young heart,  
For well we knew our paths must stray  
And might not cross for many a day.

Life offered us an empty cup  
With choice of wines to fill it up;  
Sometimes we quaffed a sparkling brew  
And sometimes tasted bitter rue.

The table set, the wine was poured,  
And if we thought to thank the Lord  
And drink to Him as honored guest,  
He came and joined our simple feast.

And if we noticed, where we sat,  
Some hands that trembled, what of that?  
The choicest tree among the throng  
May tremble when the wind is strong.

The cup of years went round and round  
And year by year, without a sound,  
It wrought a chain of friendships true,  
And precious as the morning dew.

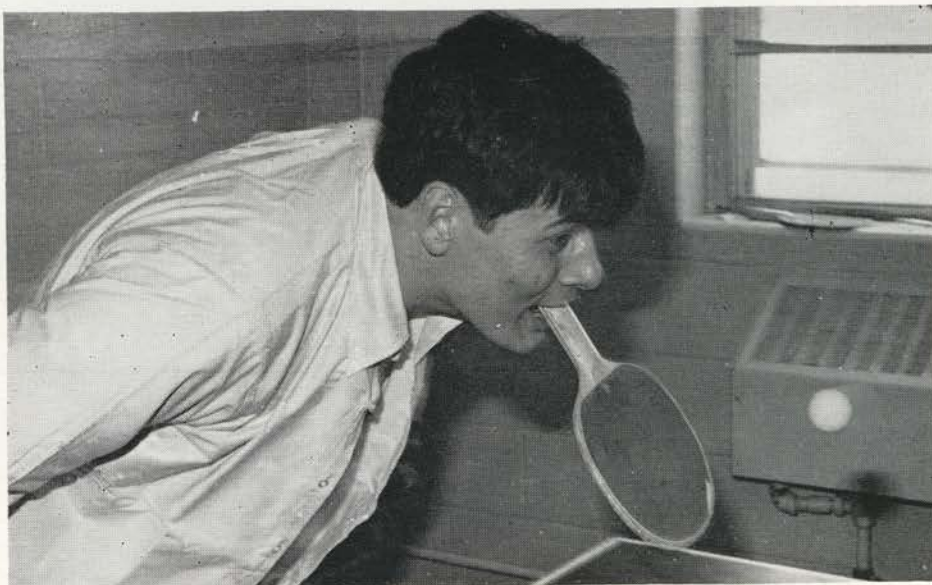
To lightly hold the transient things:  
To firmly grasp the hope that springs  
Eternal, in the human breast;  
That is to live life at its best.



# NOTES FROM THE CAMPUS

**PUBLICATIONS . . .** The *Talisman*, student newspaper, appeared during the past year in five editions, rather than six as previously. The move, by appearances, was a wise one. Advisor Oscar Auger and his crew of editors and assistants have had more time to sift and sort materials, and have prepared a super senior special, honoring the graduating classes. Most notable improvement in the *Talisman* has been the quality of the art work. Mrs. Robert Hudson's work with budding cartoonists has been very evident. Susan Haseltine, active in myriad school activities, has been the hard-pressed editor, with assistant editors Nancy Christie, Steven Shaw, Jeannie Hammond, Kathy Christie, Yvonne Susi, Norris Cianchette, Arline Daily and Dawn Martin. In addition there have been 18 assistants in the sports, society and features departments. Year book, *The Trumpet*, first edited in 1915 by Everett C. Hurd, this year has been edited by Nancy Christie. Norbert Young Sr. again has served as faculty advisor. Assistants to Nancy have been Robert Ashe, Reta Bickford, Nancy Chandler, Joan Gould, William LaBarge, Sheralyn McPherson and Valerie Stein.

**ORGANIZATIONS . . .** The *Summa Rerum*, school honor society, each year since its recent inception has played an increasingly important role in school activities. It has undertaken the planning, organization and direction of the annual Winter Carnival — quite a task — and has made plans for the orientation of new students in the fall of 1967, and has worked toward the formulation of a school handbook. Also in the works for the *Summa Rerum* is the possibility of a Spring Weekend, similar to the Winter Carnival. Membership to the *Summa Rerum* is earned by excellence in the several forms of school citizenship. The roster for 1966-67 included Susan Haseltine, president; Nancy Cookson, vice president; Sheilya Cookson, Brenda Rich, Bruce Hughes, Yvonne Susi, Neil Cross, Stephen Fendler, Gary Fitts, Gregory Patterson, Jeffrey Legge, Larry Small, Cheryl Foster, James Maynard . . . *The Future Homemakers of America*, with a paid membership of 40, the largest gathering in several



Parents of Bill Tedeschi, Rockland, Mass., will be pleased to see that Bill has been using his head.



Parents, brothers, sisters, friends, dined with their favorite student Parents' Day in October. A bright afternoon weatherwise; not so fine on the playing fields.



The Latin Club retained its reputation for frivolity, occasionally interlaced with good works. In this tableau they demonstrate, rather nicely, Why Rome Fell.





THE MCI BAND was not only the largest in years; it was the best. The Band was only one of several groups gathered and trained by Robert D. Hudson, director of music.

years, chose as its project for the year "to participate actively in projects for family, community and world improvement." Quite an order, but the girls made a good stab at it. The Homemakers sponsored dances, served refreshments during Parents' Weekend and at the Winter Carnival, conducted a rugged house-to-house canvass for the Heart Fund, held a Mom-Dad-Me banquet in April, and in May presented a fashion show for the benefit of the Frances C. Piper Scholarship Fund, to be offered in the amount of \$100.00. Advisors to these busy beavers were Mrs. Roy U. Sinclair and Mrs. George F. Webber. Officers included Frances Worthen, president; Martha Young, 1st vice president; Ruth Rines 2nd vice president; Rebecca Huff, secretary; Nancy Elkins, treasurer; Vicki Kierstead, parliamentarian; Dianne Debay, historian; Dorothy Webber, chaplain; Betty Campbell, Jeanne Faloon, Gale Robbins, point chart . . . The *Outing Club* spent a fall weekend at Jo-Mary Lake, fished and skied at Moosehead in February, and in May worked at the new club camp at Moosehead Lake. The camp, incidentally, is now enclosed, with interior work slated for next fall. Principal assistants to advisor Wally Cunningham during 1966-67 were Allan Huttick, president; Greg Ball, vice president; Pete Stinson, secretary-treasurer . . . The *Humanities Colloquium* continued to meet weekly from December to May at the Powell Memorial Library to discuss literary and artistic works of merit. Outstanding programs were conducted by Robert Ashe and Susan Haseltine and by Mr. Norbert Young, the special guest of the final meeting, who spoke on the annual student exhibit of drawings and paintings and who also presented the Colloquium with a preview of some of

his own op art. In addition to the regular meetings, the group sponsored a paperback book sale in the spring. Members set up displays at the Parks Memorial Gymnasium and worked as cashiers. The Club still showed a profit! Advisors to the Colloquium were Norval B. Lewis and Ronald E. Bessey. . . . The *Dramatics Club*, new this year to MCI, made a fine start under impetus provided by Mrs. Margaret Witham of the English faculty. The dramatists and would-be actors met twice each month to discuss stage techniques, play reading, and other pertinent studies. Major project for the year was the 3-act play, "A Date with Judy," presented in April. The play, the first 3-act comedy shown at MCI in years, was directed by Mrs. John Furbush, also of the English Faculty. Plans for another year include the drawing of a constitution and by-laws, and for more detailed study of play production. Officers of the Dramatics Club were

Yvonne Susi, president; Edward Rachins, vice president; Cynthia Feldmann, secretary . . . Robert Ashe was president of the fun-loving *Latin Club*, assisted by Drew Field, vice president; Sheilya Cookson, secretary; and Cheryl Foster, treasurer. The Latins did some good work. They made donations to the Seabiscuit Association for Retarded Children, and supported Thanksgiving and Christmas baskets for underprivileged children. There was, certainly, the annual Club Banquet bash, wine (Welch grapejuice-type), togas and song. Mrs. Hazel Earle again served as jovial warden . . . The *Key Club* continued to compile an impressive list of good works. Some of it: The group welcomed and guided boarding students during registration; they sponsored the first dance of the season, a get-acquainted affair, no charge; they served as guides on Parents' Night, they provided Christmas trees for all school activities; and an-



A large, merry, fairly-well disciplined cast performed the three-act comedy "A Date With Judy" during the winter doldrums. It was well done. Perpetrators included, front from l., Tom Ingraham, Nancy Cookson, Cindy Feldmann, Rosalie Menendez, Richard Bryant, Lynne Gould, Kathy Christie. Standing: Ed Rachins, advisor Anna H. Furbush, Nancy Chandler, Nancy Christie, Drew Field, Yvonne Susi, Sheila Hannigan, Robert Ashe, David Yoder.



nually the Key Club provides a scholarship to a graduating senior. Other nice things done were the sponsorship of a Little League baseball team during the summer, the promotion of a junior basketball league in the winter, a Halloween party was provided to keep youngsters off the streets. Above is just part of the list. Officers for 1966-67 were Kermit Badger, president; Bruce Hughes, vice president; Douglas Lloyd, secretary and James Toulouse, treasurer . . .

Members of the *International Correspondence Club* again contributed to the Postal Deficit by mailings in all directions. Officers were Susan Haseltine, president; Sheilya Cookson, vice president; Michael Wiers, treasurer . . .

#### PRIZE SPEAKING AND MANSON

**ESSAYS . . .** Prize speaking, for the second year, was divided into Freshman and Sophomore contests, presented a week apart in February. This idea, long overdue, is sound. The evening is shortened — no more 3 hour marathons — and better attention may be given to individual speakers who, goodness knows, spend many hours in preparation for their moment on stage. Another innovation, and again we think a good one, is that quivering contestants are allowed to read their piece, if they wish, thus providing better opportunity for "oral interpretation," the complete idea of the contests. The program was well done; coaches Mrs. Norbert Young Sr. and Mrs. John Furbush deserve considerable credit. Also, Mrs. Paul V. Witham, as "coordinator," might take a bow for sharpening up what was becoming a stereotyped production. The kids? Oh, yes, there were some. Freshman winners were Katherine Christie of Newport and Richard Bryant of Pittsfield. Second places were earned by Susan Reifschneider, Pittsfield, and Scott Jones, same town. In the Sophomore Division Lynne Gould and Gregory Patterson, both of Pittsfield, took the honors; Beverly Dean and Kerry Martin, again Pittsfield, were close seconds. Faithful Alumni Association, as always, provided pitifully petite cash awards. (Used to be enough to put a kid for a semester through Bates — but no longer.) . . . The *Manson Essay Contest*, so sacred to MCI tradition that even innovating Mrs. Paul V. Witham dares not scuff up the format, was held for the 97th consecutive year in March. After all of those years it



Future Homemakers again conducted a house-to-house canvass of Pittsfield and its hinterlands. Frances Worthen, FHA president, is show with hard-walking lieutenants Rita Springer and Nancy Elkins.

has finally been determined that winners henceforth will be recognized by having names on a plaque to be held in permanent possession of school. Fine idea, but surely tardy. First names on the memorial are Yvonne Susi, Pittsfield, and Harold Mosher, Union. Yvonne won with an essay an "A Man of Affairs"; Harold offered a bit on "Spelunking." Second places were earned by Gail Chandler, Pittsfield,

and Drew Field, Detroit. One of the best and closest Manson Contests in years. Coaches: Mrs. Witham and Mrs. John Furbush . . .

**MUSIC . . .** It gets to be embarrassing to say for several years in a row that each season a particular program is "better than ever," but it *will* be said about music at MCI. Director Robert D. Hudson, severe taskmaster, has drilled interested students to the very



MCI's department of music was host to the Maine Independent Schools Music Festival in early May. Featured were a 200 voice choir and an 80 piece band. Stanley D. Hettinger, Director of Bands at the University of New Hampshire, is shown leading musicians from ten Maine independent schools.



highest of musical standards, vocally and instrumentally. There has been quite a program. Let's note: The Band was chosen to perform at a Republican rally featuring Richard M. Nixon at Waterville in November; Band and Chorus conducted tours to perform at Washington Academy, Lincoln Academy and Yarmouth Academy. Also the annual Christmas Concert, the annual spring "Pops Concert" and the fall variety show, "Campus Capers." In addition the MCI musicians were hosts to the 10th annual Maine Independent Schools Music Festival, which included a 200 voice chorus and an 80 piece band concert. Trips were made to Colby and Maine for interested students and in May a hootenanny was sponsored for the benefit of the Marie Bradford School for Retarded Children. In all, Quite a year!

**DORMITORY COUNCILS . . .** Student dorm leaders are almost as important as housemasters in the direction of many dormitory situations. May *almost* be underlined. The function, primarily, of the various dorm councils is to provide a liaison between students and the faculty and staff. Our boys invariably make good choices in their own selection for leadership. As: for Alumni Hall — Allen Huttick, president; Paul Grindell, vice president; John Leonard, secretary. Rowe Hall — Winfield Gurney, Kermit Perry, Eric Proctor, Stephen Russ, William Sternburg, Robert Vantiss. For Weymouth Hall Eric Hayward, president; Walter Birt, vice president. The New Dorm went with Greg Becker, president; Thomas Moran, vice president. Fine choices all.

**ASSEMBLIES . . .** Frequent assemblies kept non-student students happy every other week or so. There were still things to be learned or appreciated. Example: It was possible to find who had won awards in fall, winter and spring sports. Those alert could hear and delight in a variety of superior musical artists and soloists. The Key Club had a Maine State Trooper to warn and advise; the Armed Forces told of things that might (gulp!) be anticipated.



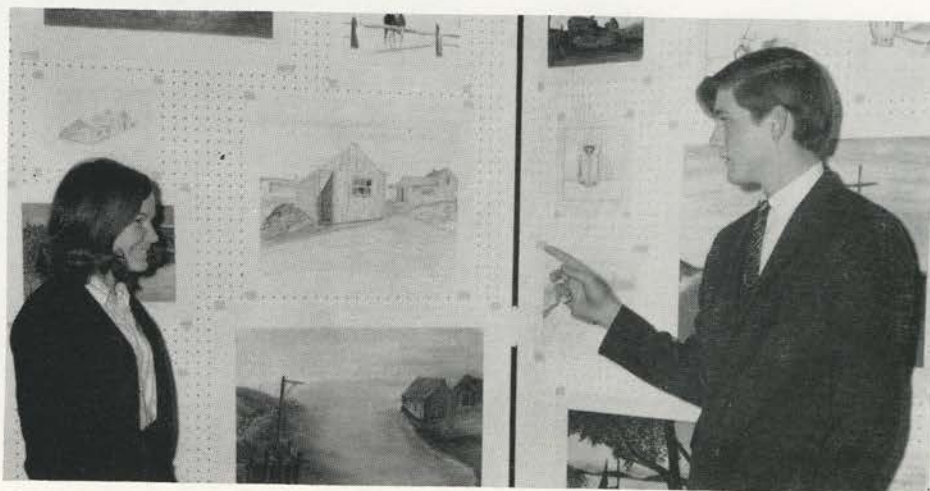
Bruce Hughes, captain of the football Huskies, was presented the Coaches' Trophy by Dave Lahait '60. The Trophy is emblematic of outstanding contributions to the team. Co-recipient Wayne Ray was absent at the ceremony.



Senior Jeff Gilmore of Alumni Hall and Batavia, N. Y. won the Maine Prep School Ski Jumping Championship for the second consecutive year. Jeff finished fourth in the Eastern Prep School Meet in jumping. He is shown with just a couple of his trophies.



Winter Carnival Queen Kathy Starbird presented the Carnival Trophy to Scott G. Bailey, president of the fifth-year class. Scott's prepper-types compiled the highest totals in Carnival competition. The award was made at the Sno-Ball, concluding event of the winter weekend.



Norman Bradley Jr. of Rockport, Mass. indicates fine points of his work to Mary Ellen Gordon of Pittsfield. Norm was one of 25 student exhibitors in what has become an annual Spring Art Showing.



# MCI IN SPORTS

Success — in terms of winning — varied greatly in MCI sports during the fall and winter seasons of 1966-67. Some outstanding records were made; there were some bleak moments. Let's review.

**HUSKIES FOOTBALL . . .** The varsity Huskies won no games in 9 outings. Their play was always exciting, they were never blown off the field. Coach Dave Lahait has offered no excuses — but we will. The competition over the past two years in the Class "B" Pine Tree Conference has grown too strong. It's a matter of mathematics. MCI, with its smaller undergrad enrollment simply cannot compete favorably with schools with three or four times its eligible-male population. A new league, or new opponents, must be sought and quickly. Back to the season: Pat Patterson was named best offensive back by Coach Lahait; Alex Luria was singled as outstanding defensive player. Good news: Pat will be back next year as a senior, Alex as a junior. Outstanding players included Gary Fitts, Howard Salley, Tom Ingraham, Nathan Haynes, linemen; and backs Jeff Legge, Dave Varney and Bruce Parker. The JV Huskies were a bit more successful, if that is the word. They won a memorable contest against the Madison JVs 6-0 under the direction of coach Al Murray. Lyford Beverage '61 was the envy of the football coaching staff. His sturdy freshmen won 3 games, lost 2. Fine prospects from this crew are Robert Rodgers, Dan Cianchette, Mark Susi, Ted Susi and Scott Jones.

**CROSS COUNTRY . . .** Coach Norbert Young Sr. found nothing but happiness under greying autumn skies as his whippets knocked off Bangor, Hebron, the Bowdoin Frosh, the Hinckley School, North Yarmouth Academy, the Maine Frosh, Kents Hill and, finally, swept the Maine Prep School Meet. Most of the running was in the rain; Coach Young ruined three hats and several pairs of shoes, but worth it. The victory over the Maine Frosh incidentally, was the first in ten years. Barry Reilly was captain of this unbeaten team, generously supported by

Steve Loveless, Marty Mullin, Mike Raymond, Bob Moody, Randy Charlton and Steve Norton, not necessarily in that order across the line.

**SOCCER . . .** Rod Smith's soccer bouncers did not enjoy one of their best seasons. There were plenty of troops, but little experience. If the season had been extended another 7 or 8 weeks the final tally of 1 win, 1 tie, might have been considerably improved. In the next-to-last game MCI bumped Kents Hill on their own field 3-2, and in the final contest tied a rugged and experienced Bridgton aggregation 1-1. Fine, and improving, players included Doug Latham, Bob Ciampa, Alex Tredinnick, Win Gurney, Jim Topping, Barry Dagan, and Bill Albair. Ted St. Pierre directed an equally green — or more so — crew of JVs to 2 wins and 1 tie over a 7-game program. The wins were against Kents Hill; the tie, with the Hinckley School.

**FIELD HOCKEY . . .** Coach Malaka Russell and her field hockey girls faced the same awesome problem as their counterparts in football and soccer. Plenty of troops, plenty of drive, but little experience. "Tookie's" gang was

spangled with willing neophytes who frequently found it difficult to belt the elusive pellet in proper directions. They fractured a few enemy shins but scored fewer goals. Pillars of strength were veterans Linda Dow, Nancy Cookson, Shelley Martin and Sheralyn McPherson. Oh, yes, the season. One win, 1 tie, over 7 games played.

**PREPPER BASKETBALL . . .** 11 wins against five losses was the record for another fine Prepper squad. Two losses to North Yarmouth Academy were all that separated the Preppers from an invitation to the New England Prep School Meet. Notable victories were over the Maine Frosh, the Colby Frosh and the Bates JVs. Dave Lahait's warriors included Eric Hayward, Dick Prone, Jim Boissoneau, Armand Doiron, Dave Cannan, Mike Angelica, Allan Poole, Steve Ralph, Bill LaBarge, Bill Sternberg, Jim McCue, Tim Fahey and Ray Poirier.

**HUSKIES BASKETBALL . . .** Things were not as rosy with the undergrad Huskies. To get quickly to the point, they won 1 game, dropped the remaining 16. In beating Dexter H. S. early in February our Huskies snapped a 22



Freshman footballers, directed by Lyford Beverage '61, back row, left, won more games than the Varsity and JVs combined.



game losing streak — extending from the previous year — which may have given satisfaction to some, but certainly not to hardworking and understandably harassed first year coach Peter Fisk. Again, the group was young, and given another year of the same fine coaching the Huskies may again be threats in their tough league. All the boys worked hard; perhaps outstanding were Nick Susi, Pat Patterson, Greg Ball, Greg Lobikis, Jeff Legge (great in three sports) and Larry Small. The JV's did a bit better, winning 3 out of 15 under coachmanship Arnold Dunning, MCI '62. The Freshmen, directed by Lyford Beverage '61, also won 3 from a 10 game schedule, making Lyford, in terms of percentages, the winningest basketball coach for 1966-67.

**GIRLS' BASKETBALL . . .** Another weepy tale. Mrs. Russell's young ladies were **not** the scourge of their league. But then, considering the total of 15 hours practice time for the varsity and JV teams, they didn't do badly. The varsity cluster won 3, lost 5; their juniors won 2, lost five. Several real close ones, but close doesn't count, Erica Susi earned the coveted Basketball Trophy; Linda Dow, Shelley Martin, Dawn Martin, and Sheralyn McPherson, good in any sport they attempt, were leaders of the pack.

**SKI TEAM . . .** Thankfully, another bragging item. Bob Boulriss's wool clads at one time or another snowed just about every team they met. To say it better, no one trimmed them twice. The Hinckley School, Colby Frosh, North Yarmouth Academy, Belfast, Dexter, and Fryeburg Academy were a few of the fallen. Jeff Gilmore won the jumping title at the State Prep School Meet for the second consecutive year. Some superior skiers were Gilmore (certainly), Steve Fendler, Fred Ehrlenbach, Mike Fendler, Eric Cianchette, Ricky Parkhurst, Rocky Cianchette and Doug Latham.

**RIFLE TEAMS . . .** Another good winter for coach Frank Haseltine, this year assisted by Mort Remick. His shooters were iron-nerved, steady-handed. MCI gunners placed first in their division of the Junior Postal League; the "B" group finished second



The soccer varsity worked hard and enthusiastically; the green squad won 1, tied 1.



Our field hockey girls were as rugged as ever, but missed the gazelle-like speed of several seniors from the previous year. Only 1 win and 1 tie were salvaged from a 7-game slate.



Coach Norbert Young Sr.'s cross country hoofers swept through their fall of 1966 schedule undefeated, including perfect scores against the Hinckley School and North Yarmouth Academy. Yes, they also nailed down the Maine Prep School Meet.



Life was made jollier for the cheerleaders; this winter their lives were brightened by the inspirational presence of Bob Stearns and Howard Gosman. Brave lads!



in theirs. When questioned about the "C" and "D" teams, coach Haseltine blushed nicely. In shoulder-to-shoulder competition MCI marksmen outgunned Waterville and split matches with Husson College. Seeded first six marksmen, not in this order, were Ben Mathews, Laforest Mathews, Louis Lizotte, Yvonne Susi, Dave Nash, and Camille Derosier. At the all-important Hampden Regional Matches, team captain Ben Mathews had the highest score in the kneeling position in his division and Louis Lizotte took second high aggregate and high in the sitting position in his own division. In all, a fine showing.

**SPRING SPORTS 1966 . . .** Too late for inclusion in the **Alumnus** of last year, spring sports in 1966 was worthy of brief reporting. Mostly, as a determined reader will find, the Town of Pittsfield was not kept awake of nights by joyful ringing of victory bells. Still, a reporter must tell.

**PREPPER BASEBALL . . .** As good a place to start as any. The Preppers did not salvage a game from their nine-game schedule. No particular excuses, only a large lack of experience. Coach Al Murray, patient Coach Al Murray, could count Garland Dubey, Lou Drake and Claude Snizek as his seasoned players.

**UNDERGRAD BASEBALL . . .** Coach Dave Mosher, with a mostly sophomore group, reached a high point in the spring of '66 when his Huskies knocked Cony High School out of the lead in the Kennebec Valley Conference. Unfortunately, that was the only pinnacle. There were no other wins. Good ball players were pitchers Ralph Debay and Mike Morton, and stickmen Bruce Hughes, Dave Varney and Doug Varney.

**TRACK . . .** Norbert Young Sr., as usual, did well with the men available. They beat Kents Hill and North Yarmouth Academy in dual meets, placed second in the Maine Prep School Meet behind Hebron. The Maine and Colby Frosh were just too tough. Bill Lindblom picked up points in tossing the javelin, Bill LaBarge showed class in the pole vault. The real strength came in running events. The combination of



Eleven wins, 5 losses, was the record for the Prepper basketballers. The fine season included wins over the Maine Frosh, the Colby Frosh and the Bates JVs.



The softball girls, for the life of them, could not get past Kents Hill but otherwise showed a good 4-2 record in the spring of '66.



Far and away the winningest baseball team in 1966 was the array of freshmen and sophomores put together by Ted St. Pierre, front row, extreme left. These JVs — so called — won all but one of their 8 games.



George Shiraga, Ian Jenike, Barry Reilly and Barney Keenan was most formidable.

**GOLF . . .** Golf was a bright spot. John Dana and assistant Pete Bradshaw returned the MCI diggers to winning ways, 5-2 for the short spring. Wins were over the Maine Frosh, Foxcroft and Wilton Academies, and Mt. View High School. A Father-Son Tourney was inaugurated at the Johnson W. Parks Course. A pleasant finale to a good season.

**TENNIS . . .** Tom Thompson's racketeers won 3, lost 4, for what must be considered a purely average season. Wins were at the expense of Skowhegan H. S. twice, and the Hinckley School. Losses were to the Colby Frosh, South Portland High, the Maine Frosh and Hebron. Big Jim Manning and Jack Horton were frequent winners.

**GIRLS' SOFTBALL . . .** 4 wins, 2 losses added up to a good season for our ever-enthusiastic girls. The two losses were to old nemesis Kents Hill. Mrs. Russell's stars were Linda Clucky, Fran Worthen and Linda Dow.

**JV BASEBALL . . .** Not usually mentioned in the *Alumnus*, the JVs for '66 certainly deserve notice. Coach Ted St. Pierre molded a group of freshmen, plus a few sophomores, into a unit that

won 7 out of its 8 contests. Only loss was the last game of the season, to the

Lawrence JVs.—Should have rained that day!



The 1966 tennis team won 3, lost 4, during an interesting rain-spangled spring. Jim Manning, standing, second player from right, was seeded number 1.



Golfers in 1966 got back into a winning stride, taking 5, losing 2, over an abbreviated season. Contributing factor to wins was availability of the new Johnson W. Parks Golf Course, completed the previous fall.



SENIOR BARRY D. REILLY was captain of the undefeated cross country team and one of the strongest distance runners in Maine schoolboy competition. Barry is the son of Roland E. Reilly '36 and Eloise Deann Reilly '38.



The MCI ski team was one of the best in years. This gaily dressed crew, all in identical beanies, did notable work during the winter of 1967.





The Johnson W. Parks Golf Course boasts one of the best-equipped and shiniest pro shops in Maine. Shelly Martin tries out a new putter, Sanger M. Cook '17 offers advice, pro Dana attempts to sell Greg Hobbs a new golf bag. Indeed a busy spot!

## THE JOHNSON W. PARKS GOLF COURSE



Kerry Martin holds the flag, Instructor John Dana watches, Sheila Hannigan strokes one in the general direction of the cup.



## MCI's New Course Open to Alumni Golfers—Popular With Students

More than 5,000 rounds of golf were walked off at MCI's Johnson W. Parks Golf Course during its first full season of operation, April 29-November 1, 1966. This figure, according to course pro, John P. Dana '49, is a conservative one. John ought to know his arithmetic—he doubles as head of the MCI math faculty.

During the 1966 season more than 75 memberships were established, both family and single, there were 26 junior memberships and handicaps were made to more than 50 youngsters to the age of 18. John's figures do not include 7 deer, 47 foxes, 35 rabbits and one moose seen avoiding the pro shop to duck greens fees.

This new season—to date—has shown a 25% increase in all categories, except moose.

There are several reasons. A coffee shop-lounge has been completed during the winter, the pro shop and locker rooms, things of beauty, have been refurbished. Also, nation-wide statistics indicate a great surge in interest in the gentle—and sometimes not so gentle—game.

Students, from both Dorm and Town, have absolute priority on the course when school is in session. During the summer months, however, probably most of the play is by members and visitors. A check one day last summer showed car registrations from 13 states and Canada. Fine publicity for both the course and the School.

Alumni visitors are most welcome. A drawer in the office of Headmaster Stanley is stuffed with complimentary passes for just such important personages. Take advantage!



Janet and Mrs. John Dana tidy up the snack bar in preparation for hungry golfers.



At the very beginning . . .

### Johnson W. Parks Course



A bit later. The start of the first fairway.

# PLAN NOW!

## Don't Miss the Seventeenth Annual Mid-Summer Reunion

### Saturday, August 5, 1967



# MCI BUILDERS

MCI BUILDERS, numbering 27 to April 21, 1967, did notable work in bolstering the present Fund Effort by \$5,765.00.

Through their gifts of \$100 or more, our Builders have generously demonstrated their continued faith in the School as it enters its second century of service to Maine and — indeed — our World.

Gladys M. Bigelow '10  
 Leo W. Blaisdell '08  
 Warren S. Churchill '14  
 Ryan D. Fendler  
 Mable Peabody Fogler '09  
 Bertha Smith Furber '07  
 Mr. and Mrs. Albert L. Gilyeart  
 Dr. and Mrs. Sol D. Gosman  
 Lewis O. Hatch '58  
 Mr. and Mrs. Lee W. Holbrook '15  
 E. Robert Kinney '35  
 Beth Russell McCausland '14  
 Frank L. McCausland '15  
 Mr. and Mrs. James Mendelson  
 Erma Holden Oseland '18  
 Mr. and Mrs. Johnson W. Parks  
 Hayward T. Parsons '12  
 Mr. and Mrs. Albert L. Partridge '04-'05  
 Helen Libby Ray '16  
 Homer F. Ray '15  
 In Honor of Helen Libby Ray  
 Mr. and Mrs. Ernest P. Robitaille  
 Mr. and Mrs. Boutelle Savage  
 Carl R. Smith '08  
 Guy Susi '35  
 Claude R. Weymouth '09  
 Agnes Parks Winslow

St. Albans, Maine  
 East Franklin, Maine  
 Tulsa, Oklahoma  
 Palmyra, Maine  
 Hastings-On-Hudson, New York  
 Bar Mills, Maine  
 Quincy, Illinois  
 Margate, New Jersey  
 Portland, Maine  
 Melrose, Massachusetts  
 Manchester, Massachusetts  
 Wollaston, Massachusetts  
 Wollaston, Massachusetts  
 Belfast, Maine  
 Akron, Ohio  
 Waterville, Maine  
 Providence, Rhode Island  
 Watertown, Massachusetts  
 Milford, Delaware  
 Milford, Delaware

Chestnut Hill, Massachusetts  
 Cape Elizabeth, Maine  
 Newport, Maine  
 Pittsfield, Maine  
 Memphis, Tennessee  
 Coventry, Rhode Island

## A SPECIAL CITATION

The MCI Alumni Association gratefully offers this Special Citation to its Alumni, Parents and Friends who, through their gifts of \$25 through \$99, have so effectively supported the present Fund Effort — ending August 15, 1967.

Mr. and Mrs. Charles Alexander  
 Mr. and Mrs. Oscar E. Auger  
 Pauline Clay Bissonnette '25  
 Elaine Marden Brooks '19  
 Mr. and Mrs. Richard M. Clark  
 Robert L. Collier '52  
 Sanger M. Cook '17  
 Ralph B. Craig '23  
 Glenn W. Critchley '63  
 Arthur W. Danielson '33  
 Memory of Dr. Eugene H. Drake '10  
 E. Richard Drummond  
 Grace E. Fickett '17  
 Robert A. Franzoni '65  
 Phyllis James Frink '37  
 Memory of Dr. Philip F. M. Gilley '08  
 Archibald L. Hayden '05  
 Kathleen Phillips Holbrook '15  
 Lee M. Holbrook '15  
 Mr. and Mrs. Robert N. Hubbard '38

William D. Ireland '12  
 Adelbert M. Jakeman  
 Andrew J. Karkos '27  
 Irene Reynolds Karkos '21  
 Wilfred J. Landry '24  
 Herbert A. Leonard '35  
 William H. Lindblom '66  
 Milton L. Lindholm  
 Dr. Phelps P. Luria  
 Ruth Runnals Lyon '11  
 Donnie Getchell McCully '15  
 Alice Whitten McDougall '20  
 Edward A. McFarland '32  
 Harvey E. Mitchell '21  
 William B. Nealley '49  
 Henry L. Nielsen  
 Rita Bouchard Norton '39  
 E. Burnell Overlock '24  
 Albert L. Partridge '04  
 Olive Dyer Partridge '05

Myron C. Peabody  
 Karl R. Philbrick  
 Howard P. Price '64  
 Leo E. Ray '10  
 Miriam McMichael Robinson '25  
 Mr. and Mrs. Walter Rowlands  
 Mr. and Mrs. George Schiraga  
 Miles A. Snowman '31  
 Mr. and Mrs. Edward R. Stanley  
 Blanche Morton Stevens '04  
 Lloyd H. Stitham '23  
 Cornelius J. Sullivan '28  
 Wayne F. Sweetland '12  
 Cecil A. Thurston '14  
 Harvard C. Townsend '12  
 Mr. and Mrs. Frank A. Tredinnick, Jr.  
 Guy S. Twitchell '12  
 Earle N. Vickery '04  
 Avis Maddocks Whitcomb '15  
 John A. Woodruff '63



# A LIVING ENDOWMENT

By April 21, 1967 more than 530 Alumni and Friends of MCI had offered \$9,584.00 to the current Alumni Development Fund — at that time a half-way point in the Fund Effort. It is pleasantly anticipated that by the August 15 deadline the Fund will have for the seventh consecutive year exceeded previous records. Most encouraging!

Membership in the Dollar-A-Year Club, earned by those whose gifts have equaled or exceeded in dollars the number of years since graduation from MCI, is indicated in bold type; numbers in parentheses indicate separate gifts made by an individual during the present Fund Effort.

Complete and final listings will be published in the Fall Newsletter, mailed to all Alumni following the termination of the Fund Year, August 15, 1967.

To all Alumni — sincere thanks for generous support.

1893	1-50%	\$10.00	Gladys Tarbell Shorey	Mildred Goodell Tasker	Helen Childs Shorey
			Guy S. Twitchell	Roy B. Watson	<b>Erma Holden Oseland</b>
1895	1-50%	\$10.00	Pliny H. Card	Ruth Morse Webber	Harry P. Brann
			Hazel Archer Stansbury	<b>Avis Maddocks Whitcomb (2)</b>	1919 5-18% \$51.00
1899	2-33%	10.00	Hazel Fletcher Eaton	Laila Walton Winship	Elaine Marden Brooks
			Olive Gray Gilman	In Memory of	Hilda Thurston Hatch
			Sally E. Dow	Newton Thompson	Barbara Lancey Foster
1901	2-50%	\$25.00	William D. Ireland	Leroy Thomas	Clarence A. Day
			Pearl V. Harris	Mervin Ames	Walter E. Moses
			1913 2-8% \$15.00	Bryan Doble	1920 7-17% \$76.00
			Anne Anderson Keyes	Hathorn Dodge	Vera Goodale Bailey
1904	3-33%	\$113.00	Doris Dyer Nutting	Delbert Dunbar	Martin C. Moran
			1914 13-32% \$653.00	William Small	Basil W. Hunt
			<b>Warren S. Churchill (2)</b>	Parker Whitten	Ethel Reed Day
			Eliza Smiley (2)	Gardiner Witham	Mary Whitten Garfield
1905	8-80%	\$167.00	<b>Beth Russell McCausland</b>	Ada Buckland Young	Thelma Twitchell Morse
			Ellen Cunningham Bannister	Gladys Estes	Alice Whitten McDougall
			Nan Spaulding Black	Marion Estes Morrill	1921 10-29% \$107.00
			Hazel Adams Plummer	Helen Lawrence Stewart	Hildred Craig Bauer
			Kathryn Dow Nichols	Helen Robinson	Hope Hodgdon Updegraff
			Cecil A. Thurston	Edna Rumill	Laurence P. Bagley
			Ella Ray O'Connor	John White	Irene Reynolds Karkos
			Lizzie Tufts Friend	Earle Robertson	Christine Colson Mayhew
			Pearl Varney Merrill	George Case	Evelyn Leathers Damon
1906	5-28%	\$30.00	Leonora Runnals Frost	Horace Maxim	William S. Silsby
			Mary Hanson Parkman	Pauline Rogers Rand	Harvey E. Mitchell
			1915 69-100% \$1,112.00	Neal Briggs	Marion Broderick Flynn
			<b>Homer F. Ray (2)</b>	Ernest Emery	Melvina Day Jacobson
			Raymond W. Blaisdell (2)	Allen Hackett	1922 7-20% \$32.00
			<b>Frank L. McCausland (2)</b>	Earle Harvey	Gilbert A. Spear
			Rosamond Woods Abbott	Henry Kingsbury	Irma Davis McKechnie
			Errol W. Ames	Luther Kenniston	Leland L. Thurlow
			Delmore P. Adams	Merle Moon	S. Ellen Henderson
			Tressa Emerson Benson	1916 17-47% \$686.00	Mary Rhodes Folsom
			Leslie L. Black (2)	Stella Salisbury Seekins (2)	Leora Blaisdell Bowden
			Fern Shaw Buckley	Verna Coffin Farrow	Marguerite L. O'Roak
1907	1-8%	\$300.00	Ruby Hubbard Bunker	<b>Helen Libby Ray</b>	1923 5-17% \$85.00
			Doris Kenniston Cockell	In Honor of Helen Libby Ray	Marada L. Johnson (2)
			Dorothy M. Crawford (2)	Ernest C. Smiley (2)	Raynold L. Fuller
			Rena Shepard Davidson	Hazel Chandler Weston (2)	Leola A. Mitchell
			Thirza Colby Fairbrother (2)	Jessie H. Bates	Lloyd H. Stitham
1910	9-47%	\$248.00	Merrill A. Farrow	Horace G. Newhouse	Ralph B. Craig
			Hazel Copeland French (2)	Elmer C. Estes	1924 8-20% \$118.00
			Doris Mace Goode	Etta Gray Collins	Genevieve Weeks Ireland (2)
			John E. Goodwin	Myrtle I. Pushor	Ruth Wilkinson Stoughton
			Martha Tucker Griffin	Edith M. Mitchell	<b>Wilfred J. Landry (2)</b>
			Ada Bell Kennan Hall	Hazel Pushor Reagan	Ruth Mudgett Louder
			Vera Emery Hanson	Thelma Nason Palmer	Ruth Palmer Harribine
			Edna Tracy Hayward	Ruby D. Sawyer	E. Burnell Overlock
			<b>Lee M. Holbrook (2)</b>	Leland M. Goodrich	Goldie Bragdon Bryant
			<b>Kathleen Phillips Holbrook (2)</b>	1917 4-13% \$95.00	Walter O. Gordon
			Raymond L. Kendall	<b>Grace E. Fickett</b>	1925 8-30% \$117.00
			Jennie M. LaDame (2)	Lydia Bickford Susi	Esther S. Bussell
			Mary Drake Maloney	Margaret Staples Merrow	Roy E. Lindquist
			Thelma Worthen Mills (2)	Sanger M. Cook	Pauline Clay Bissonnette
			Donnie Getchell McCully (2)	1918 12-30% \$164.00	Effie Walker Vroom
			Amy Ragan McIver	Vernon A. Libby	<b>Miriam McMichael Robinson</b>
			Karl H. McKechnie (2)	Ervena Goodale Smith	Cecil J. Harribine
			Cecil H. McNally	Frank L. Milan	Horace C. Porter
			Phyllis Estes Norton	Memory of	Norman G. Hodgkins
			Rita Pushor Palumbo	Donald L. Bartlett	1926 5-20% \$43.00
			Velma Thomas Parker (2)	Harold E. Cook	Harold W. Louder
			Mildred Emerson Sevey	John A. Small	Louise Maxim Vallette
			Harold C. Smith (2)	Bessie Bradford Skinner	Frances Small Farr
				Gerda Weeks Millett	Rene Devoe
				Ruby Gray Bridges	Norman N. Thurlow



1927 8-24% \$85.00

Edward L. Karam  
Ruth Milton D'Amico  
Howard L. Ferguson  
Thelma Peasley Richards  
Julia Cowan Lehr  
Alice Murch Lindquist  
Andrew J. Karkos  
Raymond H. Brown

1928 8-20% \$90.00

Harold J. Barrett  
Peter R. Valicenti  
Cornelius J. Sullivan  
Roy C. Huff  
A. Burton Craig  
Hazel Twitchell Johnson  
F. Clark Thurston  
Elizabeth Hilliker LaFrance

1929 3-7% \$35.00

Charles M. Barbour  
Rita Cowan Wade (2)  
Madeleine Coolidge McKinnie

1930 3-6% \$27.50

Eleanor A. Toothaker  
Henry R. Higgins  
Frances M. Palmer

1931 7-17% \$70.00

Helen Humphrey McPherson  
Clarice Garcelon Mitchell (2)  
Vincent L. Hathorn  
Memory of  
Marjorie S. Farnham  
by Erma F. Glidden  
Preston W. Snowman  
Miles A. Snowman  
Ruth Hatfield Wiley

1932 6-10% \$64.50

Gladys Colwell Donahue  
Edward A. McFarland  
Donald W. Brown  
Sarah Wren Williams  
T. Curtis King  
Ernest R. Higgins

1933 5-12% \$52.50

William S. Coffin  
Helen Bailey Brown  
Arthur W. Danielson  
Geraldine Stott Carleton  
Viola Stafford McKenna

1934 8-14% \$46.00

Miriam Palmer Gates (2)  
Margaret Page Bowden  
Clayton E. Young  
Hugh C. Dickinson  
Edith Hoffses Payson  
Maurice E. Morgan  
P. Joseph Canavan  
Josephine Hilliker Smith

1935 6-13% \$255.00

Herbert A. Leonard  
David C. Libbey  
Guy Susi

**E. Robert Kinney**  
Owen Wentworth  
Iva Cianchette Cregnoles

1936 3-7% \$20.00

Audrey Green Dunning (2)  
Evalene Pendexter White  
Woodrow W. Thurlough

1937 2-4% \$35.00

Betsey Libbey Williams  
Phyllis James Frink

1938 9-17% \$65.00

Phyllis Baker Wright  
Clifford L. Wright  
Charles F. Welch  
Robert M. Healy  
Nicholas J. Craig  
Beth Stone Gray  
Elbert M. Prince  
Robert N. Hubbard  
Florice Baker Hubbard

1939 3-6% \$53.00

Stanley L. Fletcher (2)  
Rita Bouchard Norton  
Raymond C. Whitney

1940 7-12% \$56.00

Clarence A. Hamilton (4)

John H. Cole  
Dorothy Whitman Orr  
Ronello F. Brown  
Victor V. Burnheimer, Jr. (2)  
Donald L. Stone  
Alma Ellingwood Dow

1941 1-2% \$5.00

Barbara Hammond Withers  
1942 1-2% \$5.00  
Carolyn Brown Foster

1943 3-8% \$25.00

Carl R. Wright (2)  
Priscilla Chipman Little  
Frances Wilson McCormack

1944 2-6% \$7.00

Robert M. Brooks  
Vivian Leighton Baker  
1945 2-5% \$8.00

Dorothy Austin Turner (2)  
Nedra Hammond Swartz  
1946 2-3% \$6.00

Doris Goodrich Stone  
Lawrence J. Riley  
1947 4-4% \$17.00

Burton W. Lockhart  
Ardis Hill Bowman  
Gayland A. Moore, Jr.  
James W. Logan

1948 6-7% \$38.00

Joyce Beattie Williams  
Donald L. Morin  
Harold E. Beisaw  
Richard B. Stage  
William R. Hatch  
Emma Susi Arena  
1949 6-6% \$46.00

Wayne Perseille  
John P. Dana  
Emily Snow Sinclair  
William B. Nealley  
Philip A. Short  
Joyce Dobson Cook

1950 3-3% \$9.00

George C. Allen  
June Hunt Vaughan  
William P. Zoidis  
1951 7-8% \$32.00

Richard G. Farnsworth  
Richard P. Berry  
Beverly Sennett Berry  
Charles J. Ochmanski  
Adolph J. Gingras, Jr.  
Robert C. Hutchinson  
Richard H. Murphy

1952 6-7% \$65.00

**Robert L. Collier**  
Frank E. Buker  
Sandra Humphrey Carson  
Clifford E. Bubar  
Sylvia A. Menendez  
Nancy Sinclair Wilson

1953 5-5% \$30.00

Edward H. Jewett (2)  
Ellie Hamilton Perseille  
Paul N. Kimball (2)  
Charles F. MacDonald  
Joan Ouellette

1954 2-2% \$12.00

Lois M. Fields  
William D. Hutchinson  
1955 3-3% \$20.00

Francis N. Bowen  
Anne McCready Bowen  
Dale W. Springer

1956 3-3% \$21.00

**Joseph E. Oliver**  
Richard W. Michaud  
Judith Burke Simonton

1957 5-4% \$44.00

**E. Diane Starkey Khoury (2)**  
Samuel N. Goddard (2)  
Michael P. McCready  
Phillips C. Baird  
Gloria Cregnoles Samways

1958 5-4% \$142.00

**Lewis O. Hatch (2)**  
George H. Riley, Jr.  
Stephen S. McNaughton

Robert A. Bickford, Jr.  
Charles E. Gero, Jr.  
1959 3-2% \$25.00

Gordon J. Evans  
**Anthony J. Frederick, Jr.**  
**David R. Pattee**

1960 9-5% \$52.00

Carole Huff Goodridge (2)  
**William DeStefano**  
John L. Gould  
David J. LaPierre (2)  
Frederick P. Horne  
Marilyn A. Nash  
Waldo E. Harwood  
Delia Young Bickford

1961 4-2% \$17.00

Marion J. Pattee  
Jean Cregnoles Crangle  
Charles G. Roundy  
Maureen Reynolds Lowe

1962 9-4% \$51.00

**Preston L. Carter**  
**Ernest W. Stein, Jr.**  
**Richard P. Boisvert**  
Jean Mailman Kingston  
Charles M. Freeman  
Michael T. Savage  
Robert R. Higgins  
Wayne H. Hall  
George H. Elwell

1963 11-6% \$94.00

Glenn W. Critchley (2)  
Alton L. Richardson IV  
Norman G. Tardiff (2)  
Jon F. Dawson  
Allen R. Dyer  
J. Thomas Remy  
James M. Burger  
Patricia A. Rodgers  
George M. Glaser  
John A. Woodruff  
Linda J. Cregnoles

1964 9-5% \$66.00

James F. Flynn (2)  
Ralph M. Hammond  
Thomas W. Savage  
Charles P. Anderson  
Hamilton P. Gross  
Joseph A. Cirillo  
Richard A. Hartford  
Howard P. Price  
George A. Paige

1965 20-8% \$129.00

Sandra A. Rich  
Larry E. Folsom  
Garath A. Buker  
Gary P. Stevens  
James B. Stephenson, Jr. (2)  
Jacqueline L. Lewis  
Leigh J. White (2)  
Christian A. Stein  
Brian S. Wallace  
Edward R. Lord  
Lee Anna Clukey Rowley  
William H. Peck  
Sherman D. Stanley  
Craig W. Miller  
Keith T. Badger  
Scott E. Sommer  
Susanna E. Jacob  
Richard P. Hager  
Robert A. Franzoni  
Thomas F. Knaide

1966 16-7% \$112.00

William H. Lindblom  
James E. Ayer  
Paul E. Browne, Jr.  
Mark H. Wallace  
Gordon S. Peters II  
Thomas M. Drummey  
David F. Robb, Jr.  
James O. Cirillo  
John W. Ready, Jr.  
Kathy D. Sweet  
Norbert W. Young, Jr.  
Donald C. Roffey  
Carroll I. Goodwin III  
John R. Hussey  
Carl J. Nachbaur

**Hayes E. Gahagan**  
Friends

Karl R. Philbrick  
E. Richard Drummond  
Mr. and Mrs.  
Johnson W. Parks  
Helen M. Philbrook (2)  
Mr. and Mrs.

Oscar E. Auger (2)  
Mr. and Mrs. Boutelle Savage  
Ryan D. Fendler  
Mr. and Mrs.

Edwin M. Purinton  
Agnes Parks Winslow  
Fannie M. Gilman  
Marion E. Lord  
Adelbert M. Jakeman  
Milton L. Lindholm  
Mr. and Mrs.

Walter Rowlands  
Mr. and Mrs.  
Richard M. Clark  
C. Nelson Corey  
Dr. and Mrs. Sol D. Gosman  
Mr. and Mrs.

Ernest P. Robitaille  
Mr. and Mrs.  
Norman G. Tardiff  
Mr. and Mrs.

Albert L. Gilyeart  
Mr. and Mrs.  
Edward R. Stanley  
Mr. and Mrs. Dana W. Sweet  
Henry L. Nielsen  
Mr. and Mrs. George Schiraga  
Mr. and Mrs. Norman Bradley  
Mr. and Mrs.

Charles Alexander  
Mr. and Mrs.  
James N. Drummey  
Dr. Phelps P. Luria  
Mr. and Mrs.

James Mendleson  
Mr. and Mrs.  
Frank A. Tredinnick, Jr.

**Final Tabulations of 1966 -**  
**In this ALUMNUS for**  
**1967 we are listing those**  
**contributors to last year's**  
**Fund who made their gifts**  
**from April 23, 1966 to**  
**August 15, 1966, and were**  
**thus unable to be included**  
**in the ALUMNUS for 1966.**

Alice Craig Anderson '47  
Anonymous  
Asgrow Seed Company  
Mr. and Mrs. Oscar E. Auger  
Evelyn Webendorfer Austin '45  
Wilbur B. Austin '29  
Joseph L. Badger '16  
Edna F. Bailey '31  
Mildred Webb Bailey '16  
Scott G. Bailey III '66  
Vera Goodale Bailey '20  
Helen Dow Baker '12  
Ellen Cunningham Bannister '14  
Arlo F. Barton '09  
Stanley J. Basford '38  
Dora Norton Billings '06  
Raymond W. Blaisdell '15  
Marjorie Tilton Bolger '41  
Dena M. Bouchard '39  
Memory of  
Hollis A. Bowden '12  
Memory of  
Phillip Bradford '16  
Iona Tibbetts Britt '12  
Elaine Marden Brooks '19  
Geraldine Mann Brown '35  
Helen Newhouse Brown '23  
Leroy E. Brown '23  
Natalie Taylor Brown '13  
Weston A. Bubar '54  
Arlene Burnham '14



Victor V. Burnheimer, Jr. '40  
 Elmer E. Burrill '16  
 Walter W. Burse '16  
 Robert E. Carlisle '66  
 Bertha Wheeler Carter '17  
 Raymond A. Chandler '06  
 Alton E. Cianchette '48  
 Evelene Lancaster Cianchette '45  
 Helen Esty Cianchette '48  
 Ival R. Cianchette '44  
 Kenneth L. Cianchette '42  
 Priscilla W. Cianchette  
 Elizabeth Matteson Clark '53  
 Gladys Nichols Clark '26  
 Katherine Files Clay '25  
 Evelyn James Clough '20  
 Doris Kenniston Cockell '15  
 Thomas C. Coffin '65  
 Cornelia Adair Cole '24  
 Frances Maynard Condy '36  
 Marion Larrabee Cook '25  
 Lynwood A. Cookson '36  
 C. Nelson Corey  
 Grace Quarrington Corey '29  
 Arnold C. Cowan '49  
 A. Burton Craig '28  
 Dorothy M. Crawford '15  
 Carol Shorey Cyr '55  
 Glenn E. Cyr '51  
 Lendal S. Dahlgren '47  
 Esther Morrison Dale '06  
 Richard H. Davis '57  
 Betty Lou Wright Debe '46  
 Cynthia Clark Desjardins '43  
 Hugh C. Dickenson '34  
 Anna M. Dodd '12  
 Evelyn Blood Donovan '52  
 Avis Alexander Doore '38  
 Pauline Mahoney Dorr '30  
 Memory of  
 Dr. Eugene H. Drake '10  
 Louis W. Drake, Jr. '66  
 Dorothy Gustin Driscoll '28  
 Corrisann Dunton Dundas '60  
 Audrey Green Dunning '36  
 Alton B. Durgin '16  
 Avis Randall Dyer '37  
 Marion Robinson Dyer '31  
 Leonard N. Eames '49  
 Hazel Fletcher Eaton '12  
 George H. Elwell '62  
 Sonia Mitchell Erskine '60  
 Elmer C. Estes '16  
 Elizabeth Griffin Farr '26  
 Frances Small Farr '26  
 Rochelle A. Feldman '60  
 Shirley M. Fields '52  
 Alice Wright Fitts '47  
 Gerald R. Fitts '47  
 Jeannette Webb Fitts '46  
 Lewis R. Fitts '45  
 James F. Flynn '64  
 Marion Broderick Flynn '21  
 Mary Rhodes Folsom '22  
 Elmer H. Forbus '14  
 Beulah Harmon Fortier '32  
 Mary Buker Foss '43  
 Beatrice Palmer Frederick '25  
 Jere E. Freeman '49  
 Hazel Copeland French '15  
 Virginia Hunter Friend '23  
 Diane Sidelinger Frost  
 Kathleen McGowan Frost '60  
 Leonora Runnals Frost '14  
 Delbert O. Fuller '16  
 Dorothy Rutherford Fuller '33  
 Raynold L. Fuller '23  
 Venessa Davis Fuller '28  
 Marguerite E. Galvin '16  
 Frances Lang Gifford '14  
 Glenys Hill Gifford '52  
 Memory of  
 Philip F. M. Gilley '08  
 Leila Patten Gilman '01  
 Marvin H. Glazier '62  
 John L. Gould '60  
 Owen C. Gould '12  
 Donna Hodgins Graham '46  
 Martha Tucker Griffin '15

Clarence E. Grover '36  
 Richard Groves '47  
 Ernest Hackett '16  
 Leon W. Haines '11  
 Ruth Tucker Haines '10  
 Carter W. Hall '66  
 David T. Hall '42  
 Burton G. Hammond '42  
 Frederick Hammond '30  
 Memory of  
 Earle A. Harding '11  
 by Sara Stinchfield Hawk  
 Kathleen Merrithew  
 Harrington '29  
 Paul U. Harris '12  
 Pearl V. Harris '12  
 Susan Damon Harris '16  
 Virginia Blood Haskell  
 Lewis O. Hatch '58  
 Vincent L. Hathorn '31  
 Beulah Nickerson Hawes '14  
 Doris Harmon Henderson '21  
 Iva Gould Hollis '16  
 John A. Howarth '49  
 Allison P. Howes '98  
 Memory of  
 George F. Hubbard '17  
 W. Raymon Hurd '10  
 Daniel A. Johnson '28  
 Marada L. Johnson '23  
 Donna Penny Johnston '62  
 Alice W. Jones '16  
 Marie Dodge Joy '36  
 Oleksey Kakasenko '66  
 Leon M. Kendall '29  
 Raymond L. Kendall '15  
 Anne Anderson Keyes '13  
 Ruth White King '61  
 Anthony J. Koris '57  
 John J. Koris  
 Abel D. Lajoie '50  
 Wilfred J. Landry '24  
 Richard L. Lane, Jr. '64  
 Merton C. Larrabee '08  
 John N. Laughton '21  
 Wallace N. Lee '17  
 Herbert A. Leonard '35  
 Jacqueline L. Lewis '65  
 Lincoln A. Lewis '64  
 David C. Libbey '35  
 Glendon H. Libby '16  
 Robert H. Libby '48  
 Milton L. Lindholm  
 Mr. and Mrs. Oliver T. Little  
 Priscilla Chipman Little '43  
 Walter E. Littlefield '59  
 James W. Logan '47  
 Edward R. Lord '65  
 Maureen Reynolds Lowe '61  
 Thomas C. MacDonald '47  
 Willis A. MacPherson '66  
 William A. Macomber '23  
 Memory of  
 Charles A. Magoon '05  
 Wayland R. Magoon '65  
 Alice M. Manock '28  
 Herman R. Mansur '00  
 Rayburne L. Marsh '14  
 Stacy Maxfield '16  
 Mertie Willis McAllister '07  
 Donnie Getchell McCully '15  
 Mr. and Mrs. James Mendelson  
 Frank L. Milan '18  
 Orrin L. Miller '06  
 Craig W. Miller '65  
 F. Roger Miller '12  
 Thelma Worthen Mills '15  
 Robert D. Moody '29  
 Julia Jackson Moore '50  
 Maurice E. Morgan '34  
 Martin E. Morin '66  
 Marion Hollis Morrill '37  
 Robley H. Morrison '31  
 Thelma Twitchell Morse '20  
 Carl J. Nachbaur '66  
 Paul F. Nason '30  
 Velzora Newton '16  
 W. Howard Niblock

The following classes were among the top twelve in total contributions, number contributing, and percentages contributing for the 1966-67 Fund Year.

1910	1915
1912	1916
1914	1918

Henry L. Nielsen  
 Doris Dyer Nutting '13  
 Daniel W. Oakes '66  
 Erma Holden Oseland '18  
 Isa Herrick Packard '08  
 Waldo M. Page '38  
 C. Alton Palmer '19  
 Frances M. Palmer '30  
 Memory of  
 Myrtle Hanson Palmer '96  
 Ruth Whitten Palmer '19  
 Avis Ames Paresson '60  
 Ruth Trickey Parker '36  
 Velma Thomas Parker '15  
 Mr. and Mrs. Johnson W. Parks  
 Alma F. Patten '09  
 Mary Webster Patton '05  
 Edith Hoffses Payson '34  
 Doris Ragon Pease '26  
 Louis H. Pepin '53  
 Marlene Berry Pepin '53  
 Mr. and Mrs. Arthur L. Petell  
 Daniel R. Phillips '31  
 Gloria Getchell Pomerleau '44  
 Horace C. Porter '25  
 Leora E. Prentiss '07  
 Howard F. Price '64  
 Charles T. Randall '36  
 Lona Perkins Ransden '98  
 William E. Reed '61  
 Lawrence J. Riley '46  
 Rebecca J. Rines '65  
 Esther Copeland Ring '16  
 Donald C. Roffey '66  
 Harold W. Roney '16  
 Charles G. Roundy '61  
 Mr. and Mrs. Walter Rowlands  
 Ninetta Runnals  
 Thomas W. Savage '64  
 Memory of  
 Ida Tibbetts Schenk '05  
 Kathleen Field Scott '54  
 Matthew H. Scott '53  
 Myra E. Sewall '14  
 Cecilia A. Shatney '49  
 Earl Shorey '16  
 Golda Sidelinger '16  
 Judith Burke Simonton '56  
 Emily Snow Sinclair '49  
 Mr. and Mrs. Roy U. Sinclair  
 Olive Murch Skillings '29  
 Merle A. Small '16  
 Betsey Higgins Smith '12  
 Douglas L. Smith '62  
 Ervena Goodale Smith '18  
 Josephine Hilliker Smith '34  
 Mark G. Smith '66  
 Reta Fields Smith '63  
 Rachel Fields Spaulding '60  
 Rodney W. Spaulding '59  
 Walter S. Spaulding, Jr. '21  
 Richard B. Stage '48  
 James B. Stephenson '65  
 Amelia Haskell Stevens '16  
 Florence Blaisdell Sweet '11  
 Mary L. Sweetland '05  
 Evelyn Wing Swift '25  
 Norman G. Tardiff, Jr. '63  
 Charles M. Thomas '36  
 Douglas B. Thompson '65  
 Leland L. Thurlow '22  
 Richard I. Tibbetts '24  
 Olive Mayo Toft '16  
 Clare Linscott Tower '14  
 Harvard C. Townsend '12  
 Walter F. Ulmer '23  
 Ruth Shuman Valore '38  
 A. Stewart Varney '20  
 Emma Johnson Varney '22  
 Isabel Lothrop Vaughan '93  
 Charles N. Vickery '38  
 Earle N. Vickery '04  
 Clifford H. Vining '55  
 Thelma Sennett Vining '53  
 Frederick A. Waldron '35  
 Marjorie McCully Waldron '36  
 Theo Davis Walker '26  
 Helen Philbrick Ward '11  
 Owen Wentworth '35  
 Roger W. White '65  
 William J. White '51  
 Memory of  
 George R. Whitten '16  
 Hazel Larrabee Whitten '16  
 Hazel H. Williams '08  
 Sarah Wren Williams '32  
 Iva B. Willis '08  
 Nancy Sinclair Wilson '52  
 Agnes Parks Winslow  
 Janis A. Withee '60  
 Barbara Hammond Withers '41  
 David C. Wood '60  
 Frances Woods '25  
 John M. Worley '63  
 Carl R. Wright '43  
 Dr. and Mrs. Herbert J. Wright  
 Raymond I. Wright '16  
 George Wyer '16  
 Joyce Almonte Wyman '46  
 Stanley G. Wyman '46  
 Ruby Hackett Young '16  
 Leta Young '06  
 William P. Zoidis '50

**TWELVE LEADING CLASSES**  
by total contributions  
to April 21, 1967

1915	\$1,112.00
1916	686.00
1914	653.00
1912	317.00
1909	305.00
1907	300.00
1935	255.00
1908	250.00
1910	248.00
1905	167.00
1918	164.00
1958	142.00

**TWELVE LEADING CLASSES**  
by percentages  
to April 21, 1967

1915	100%
1905	80
1912	62
1893	50
1895	50
1901	50
1910	47
1916	47
1899	33
1904	33
1914	32
1918	30
1925	30

**TWELVE LEADING CLASSES**  
by number contributing  
to April 21, 1967

1915	69
1905	20
1916	17
1912	16
1906	16
1914	13
1918	12
1903	11
1921	10
1910	9
1938	9
1900	9
1962	9



# CLASS NOTES

## PRIOR TO 1900

Again this year the *Alumnus* is privileged to present at the head of its Class Notes section a listing of the School's Senior Alumni to the year 1900. We hope that this directory will be of interest and may be of help in locating old classmates and friends.

- 1892 **Maude Brackett Hyde**, Woodlawn, 91 West Front St., Skowhegan, Maine
- 1893 **Annie Gilman Crowell**, RFD, Corinna, Maine
- Isabel Lothrop Vaughn**, 50 Forest Ave., Everett, Mass.
- 1895 **Bertha Maxfield Corey**, 58 Atkins St., Brighton, Mass.
- Waldo T. Merrill**, 402 4th S. E., Sidney, Montana
- 1896 **Nellie Crabtree Foss**, 999 Oxford Drive, Englewood, Calif.
- Alice Haslam Groves**, 45 Rhodes Ave., Riverside, R. I.
- Mellie Robertson Merrill**, Detroit, Maine
- 1897 **Carl D. Sawyer**, 182 Waterman St., Providence, R. I.
- 1898 **Lelia Smith Armstrong**, 1239 4th Ave., Anoka, Minn.
- Nina Spearin Loder**, 112 Willow Ave., Wollaston, Mass.
- Lona Perkins Ransden**, Hotel Ardmore, Brockton, Mass.
- Ena Tucker Trumbull**, New London Turnpike, S. Glastonbury, Conn.
- 1899 **Harry L. Bradford**, Wiscasset, Maine
- Harry L. Cornforth**, Box 216, Pittsfield, Maine
- Floy Gould Hutchinson**, 98 Elm St., Saco, Maine
- John A. Sinclair**, 120 S. Main St., Penacook, N. H.
- Helen A. Thomas**, 51 Concord St., Malden, Mass.
- Callie Butler Tibbetts**, Newcastle, Maine

\* \* \* \* \*

- 1893 **Isabel Lothrop Vaughn** was much interested in the 100th anniversary issue of the *Alumnus*, according to her daughter, Marie. Her uncle, Dr. Floriman Taylor was one of the earlier trustees of MCI and his wife Nell Taylor, taught music at the Institute.

**Annie Gilman Crowell** of Corinna sent regrets at not being able to attend MCI's 100th Birthday Party last summer, because of lameness. We wish she could have attended.

- 1898 **Lona Perkins Ransden** has lived at the Hotel Ardmore, Brockton, Mass. for 33 years. She was part time desk clerk at the hotel for 15 years, and is now retired. She has many happy memories of MCI days and of classmates.

- 1899 **Helen A. Thomas** is another MCI Senior Alumna who has happy memories of MCI, looking back to those days with a great deal of pleasure. She taught school for 42 years and is now living with friends in a nice apartment in Malden, Mass.

## 1905

Class Agent

AMORETTE PORTER

Box 370, Skowhegan Maine

According to **Amy Porter**, Class Agent to MCI '05 for a number of years, this will be her last season in that capacity. Her work has been invaluable to MCI; her departure from the post of Class Agent will be regretted, but we are comfortable in the knowledge that Amy will continue to be

"the tie that binds" for '05, if on a more informal basis. Her notes follow:

There are not many changes to be recorded. **Mildred Schermerhorn** has sold her home in Jamestown, scattered her possessions among her relatives, and is happily settled in Hall Memorial Home, 73 Forest Ave., Jamestown, N. Y., feeling secure and cared for.

And **Bill Schenk** has a comfortable little apartment in his son's home at 33 Hunter St., West Newton, Mass. This winter he has spent part of his time there at Bill Jr's and part back in Byfield with daughter, Betty Harwood.

**Archie Hayden** writes of a grandson in the Army at Anchorage, Alaska, who is a ski instructor at one of the nearby slopes. Archie's oldest granddaughter graduated from Bates last spring. She and her husband are employed now on her father's big vacation center in East Madison, N. H.

**Zana Prescott** is busy in church and community activities. The home that she is in,



**Jean I. Fuller '62** became the bride of **Seymour Burch Jr. '59** in December 1966. Jean, among other accomplishments, has been Maine Blueberry Queen, and has represented Maine in the Miss U.S.A. competition at Detroit, Michigan.

with about a hundred and fifty retired folk, both men and women, is quite different from the one we know here.

Good reports are in from **Flora Lucas Blaisdell**, **Mary Webster Patton**, **Dr. Higgins** and **Mrs. Charles Snow**. **Mary Sweetland** is still remembering all the old friends, though her poor eyesight keeps her from writing so much. **Olive** and **Albert Partridge** have been in Florida again this winter. They are evidently slowing down like the rest of us.

**Mrs. Charles Magoon** was still in the nursing home in Mesa, Arizona. Her niece is hoping to get her into a new one nearer home.

A nice letter from **Vera Bryant Kendall** told of the trip her daughter and husband had through the interesting cities in Europe last summer, and of how they kept Vera seeing it all through their letters. Then they spent a week with her in Ocean Park. Vera was then recovering from a fall when she had injured her ankle and had been in the hospital for a while and then on crutches for three months.

## 1906

Class Agent

HARRY W. ROWE

374 College St., Lewiston, Maine

Let us quote **Leta Young** of Newcastle, Maine: "The long, hard word 'peripatetic' might apply to me this year, for I have ambled about not only from Maine to Florida but also in Egypt." "Peripatetic" certainly applies! Oh, yes. Leta also included Lebanon, Syria, the Holy Land, Turkey and Greece in this tour, and hopes to be in Pittsfield, Somerset County, Maine this August.

**Esther Morrison Dale** considers that she has many blessings. Few would disagree. Daughter **Ruth**, Mrs. Brewster G. Sedgwick, her husband and four children reside in Birmingham, Michigan, where Sedgwick Opticians maintains offices. Son **Robert** is married, has two sons. He is the owner of Dale Piping Co., Buffalo, N. Y., specializing in valves and piping for industry.

**Cynthia Rollins Harris** had a severe shock in January 1966 and has been confined to a Bangor nursing home since. Her home address: 25 Otis St., Bangor, Maine.

In a most welcomed note, **Mildred Manner Jackson** said nicely, "Ever increasing pride in the growth and development of our Maine Central Institute." Mildred's address: 723 Beacon St., Newton Ctr., Mass.

## 1907

Class Agent

FREDERICK R. WEYMOUTH

RFD #2, West Valley, N. Y.

From late December to early February **Dr. Clair E. Turner** and **Mrs. Turner** conducted a study tour around the world in the interest of public health and health education. He has recently made a gift to Bates College to promote interest and participation in debating through annual awards to Bates students who have shown interest and integrity in debate. A varsity debater in college, Dr. Turner believes that debating is one of the most valuable learning experiences for students and one which is a lifetime asset in a variety of careers.

**Leora E. Prentiss**, River Rd., R2, Waterville, Maine, is National Retired Teachers Association State Director for Maine and has recently been appointed treasurer of the new Advisory Committee for the State Retirement Fund. Last summer she attended the NRTA Convention in Minneapolis, returning safely in spite of the ungracious airlines strike!

## 1908

Class Agent

LEO W. BLAISDELL

East Franklin, Maine

Class Agent **Leo Blaisdell** has again wintered at Clearwater Beach, Florida and has again bragged about the wonderful Florida weather. Makes hard reading for those left in frigid snow-bound Maine during January and February! Leo was batting out three golf sessions a week while in the South, much to the distress of Alumni Office secretary **Alma Ellingwood Dow '40**, who had to wait until mid-April to test MCI's 9-hole course.

A nice note from **Eunice P. Gilley**, widow of **Dr. Philip F. M. Gilley**, in which she expressed regret that she has missed MCI Reunions. Since the passing of Dr. Gilley she has not been able to muster the courage. Members of MCI '08 may, hopefully, be able to change her mind. Mrs. Gilley's address: Southwest Harbor, Maine.

**Iva B. Willis** of Harmony, Maine earned her A.B. degree at Colby College and a



Master's degree from the Teachers College of Columbia University. Iva has had an interesting and varied career in teaching, business, and wide travel, as well as assisting in her home and with her family as needed.

Old friends **Nellie B. Allen** of Brattleboro, Vt. and **Isa Herrick Packard** of Harmony again were dormitory residents at MCI during last summer's 100th Anniversary and Homecoming. This has become almost an annual pilgrimage, most welcomed by their many MCI acquaintances!

#### 1909

New addresses: **Arthur G. Fisher**, 8306 Garden Grove Blvd., Garden Grove, Calif.; **Meredith Maxfield Emery**, Willowick, Ohio 44095.

**Claude R. Weymouth** of Memphis, Tennessee hopes one day to return to Pittsfield for an annual MCI Mid-Summer Alumni Reunion. We certainly hope that he will do so. Claude is president of the Weymouth Construction Co., Memphis, and one of the best-known general contractors in his adopted state. His address: 177 St. Andrews Fairway, Memphis, Tenn.

#### 1910

##### Class Agent

**SADIE SANFORD McCRILLIS**

31 Hartland Ave., Pittsfield, Maine

New addresses: **Lelah Gilman Smith**, Hartland, Maine; **Earle C. Phillips**, 2121 Wayne Ave., Abington, Pa.

**Hazel Young Grinnell** has been doing a bit of traveling. Our last report indicated she was visiting the Highgate Ostrich Show Farm, Oudshoorn, South Africa, Zululand, and planned to spend a couple of nights in a game preserve. Great courage is indicated!

**Harold Bickford** was a most welcomed participant in last summer's Reunion. Harold found it most interesting to see the physical improvements that have been made at MCI in the 56 years since he graduated. Harold's address: 224 Temple Ave., Old Orchard Beach, Maine.

**Gladys M. Bigelow**, St. Albans, Maine, is a member of the Board of Directors of the Scott-Webb Memorial Hospital, Hartland, and class agent for her Simmons College Class of 1915. Gladys still lives in the house in which she was born, nearly 75 years ago!

#### 1911

**Ray Badger** of Pittsfield, long prominent in local politics and now retired, is currently serving on the Town of Pittsfield's Board of Assessors.

Mr. and Mrs. **Leon W. Haines (Ruth Tucker '10)** of Yarmouth, Maine have spent the past two winters in Florida. Last October on the occasion of their 50th wedding anniversary they spent the happy occasion at Niagara Falls.

#### 1912

##### FIFTY-FIFTH ANNIVERSARY CLASS

##### Class Agent

**HAYWARD T. PARSONS**

2200 Industrial Bank Bldg., Providence, R. I.

**Iona Tibbetts Britt**, now retired, still does occasional substitute teaching in Saugus, Mass. Iona's home was in Harmony, Maine during her years at MCI. She later graduated from Gorham State Teachers College. Iona has three children, nine grandsons and one granddaughter. Her address: 55 Essex St., Saugus, Mass.

**Wayne Sweetland**, long lost from MCI files, was one of many hundreds of alumni to enjoy last summer's Alumni Homecoming. Wayne came early, and by his own admission had a great time. His address: 26 Linden Ave., Cranston, R. I.

**Mary Fowler Packard** is thinking ahead. She has a house trailer ready for occupancy when she retires, which she says won't be long! Mary will be delighted to have old friends drop in. She will be located on

Rt. #9 and 202, between Albion and Unity.

In May 1966 **Gwen Griffin** had a very serious heart attack and for the next month was dependent on the services of a nurse. For the first three weeks she was a bed patient. She is now living on the first floor of her home in Melrose, Massachusetts and getting along nicely by herself. She was unable, however, to attend MCI's Centennial gathering on the Campus August 6th and was greatly disappointed to miss the festivities and the opportunity to greet her 1912 classmates and other MCI friends. Gwen hopes to attend 1912's 55th Anniversary reunion in 1967.

**Pearl V. Harris** is keeping house for her sister, a public health officer in charge of three North Carolina counties. Pearl is active (very!) in the Grace Episcopal Church, the Federated Women's Club and the League of Women Voters. Her address: Box 176, Waynesville, N. C.

#### 1913

New addresses: Mr. and Mrs. **James W. Robinson (Ruth Deering)**, Palmyra, Maine; **Lauretta Henzie Loeffler**, 1207 John Anderson Drive, Ormond Beach, Fla.

**Anne Anderson Keyes** is bookkeeper for McKenney's Garage and Oil Co., Newport, Maine. Anne's address: 108 Elm St., Newport.

**Everett (Sam) (Shep) Hurd** had a particularly fine reason for not being able to attend last summer's Reunion. Was in London at the time.

#### 1914

##### Class Agent

**BETH RUSSELL McCausland**

72 Rawson Rd., Wollaston Mass.

(or)

Box 594 Farmington N. H.

New addresses: **Marguerite Libby Ellis**, MRA Box 223, Brewer, Maine.

**Clare Linscott Tower**, now several years retired, is living in Fairfax, Virginia with her younger daughter and her husband. Clare is not far from Washington, D. C., which she frequently visits to attend social events. She has found many interesting people in the Washington area but finds they are constantly moving to new fields of endeavor. Clare will spend the summer in Massachusetts with her other daughter and four grandchildren. Does not expect to get to Maine but, as she says, "One never knows."

**Ray Marsh** bowls with the Senior Citizens League in his home city, Portland, Maine, and also fashions hooked rugs. His son John works for the State Department, presently in Washington, but has seen service in India and Jordan. Ray's daughter Miriam lives in Vienna, Virginia.

**Leona Woodman Curtis** of Skowhegan has sold her oil business.

**Winona Whitehouse Harvey** lives in Newport, Maine. Her husband has retired. She taught for 20 years following graduation and worked for 20 years at the Snowflake Canning Co., Corinna. The Harveys have one son and four grandchildren.

**Orin Haskell** and his wife spent their spring vacation in the Bahamas.

**Beulah Nickerson Hawes** is secretary to the Texas Society of Mayflower Descendants.

**Kate Dow Nichols** is enjoying life in beautiful Santa Cruz, California.

**Hazel Adams Plummer** of Bradenton, Florida won five ribbons at the local flower show last year. She must have a very green thumb!

Class Agent **Beth Russell McCausland** and husband **Mack '15** late last summer enjoyed an extended Hawaiian trip. They stayed at the Reef Hotel on Waikiki Beach and made air trips to all of the other islands, even visited a leper colony on Molokai. Quite an adventure!

**Ellen Cunningham Banister** of Farmington, N. H. keeps busy by hooking beautiful rugs, making her own attractive clothes and those of her three granddaughters.

**Leonora Runnals Frost** resides at 4 Flag St. Place, Augusta, Maine. Her son Charles is guidance counselor at the Livermore Falls (Maine) High School.

**Pearl Varney Merrill** and her husband live in St. Albans, Maine. He is retired, having served 40 years as a rural mail carrier. They have three children. Clayton lives in Deep River, Conn., runs his own machine shop; Clifford lives in Natick, Conn. and works for Electric Boat at Groton; Shirley, a lieutenant in the Navy, is currently doing post graduate work at the University of Washington in Seattle.

#### 1915

##### Class Agent

**HOMER F. RAY**

425 Old Shawnee Road, Milford, Delaware

Miss Nancy Jean O'Donnell, granddaughter of **Beth Russell McCausland '14** and **Frank L. McCausland**, has been awarded the Silver Wings of an American Airlines Stewardess after completing training at American's Stewardess College, Fort Worth, Texas. She is the first girl from Nevada accepted as an American Airlines Stewardess, and one of 45 successful candidates selected from among 750 young women. Miss O'Donnell, born in Boston, is a graduate of Bishop Gorman High School, Las Vegas. Before joining American Airlines she was employed by the Federal Bureau of Investigation. She has been assigned to American Airlines flight duty out of New York City.

Mrs. John Robert Kline (**Eunice Story**, Class Teacher to '15) was very active in the Swarthmore Women's Club and the Poetry Circle, Swarthmore, Pa., during the fall and winter with her programs and books reviews. She was with her children, in and near Swarthmore, for the holidays and spent the rest of the winter with her cousin in Mt. Dora, Florida.

**Dorothy M. Crawford** has sold her home in Waterbury, Conn. where she had lived for 36 years, and has moved into a small apartment which she very much enjoys. Her address: 52 Murray St., Apt. 2C, Waterbury, Conn.

**Donnie Getchell McCully** keeps busy at 142 Church St., Oakland, Maine. She plans to be in Pittsfield for the Reunion in August.

The **Raymond Blaisdells** spent last fall touring Morocco, Spain and Portugal and wintered in Largo, Florida. When home, Ray's address is 115 Pine Ridge Rd., Waban, Mass.

**Leslie L. Black** leads an ideal life of retirement: six months in Florida, six in Maine at Boothbay Harbor. Leslie does concede that there's no place like Maine!

**Thelma Worthen Mills** could not get to MCI last summer because of the sickness of her husband, George. He is better now and Thelma hopes to see us at the next Reunion.

**Jennie LaDame** spent the month of March in Florida. She still makes her home in Pittsfield.

Cards to the **Homer Rays** from **Karl McKechnie** and his wife; **Mary Drake Maloney**, **Doris Kenniston Cockell** and her husband, **Mildred Emerson Sevey**, **Velma Thomas Parker**, **Martha Tucker Griffin**, **Ruth Morse Webber**, **Laila Walton Winship** and **Floyd**, **Vera Emery Hanson**, **Thirza Colby Fairbrother** and **Maurice**, **Phyllis Estes Norton**, **Edna Tracy Hayward** and her husband, **Mildred Goodell Tasker**, **Rosamond Woods Abbott** and **Ted**, **Doris Mace Goode** and **Mark**, all indicate that they have enjoyed their various homes during the past winter.



"Fod" McCausland and wife Beth '14 enjoyed a trip to Hawaii last fall, as did Cecil McNally and his wife. Neither family knew the other was going, so they did not meet in the 50th State.

The Rays had a beautiful card from Tressa Emerson Benson and her husband Ben. Ben is an artist, and the face of the card was covered by one of his original prints. They may come to Maine for the Reunion in August — we hope so!

Raymond L. Kendall, professor at Bates College, retired after 33 years of service at Bates. He joined the Bates faculty in 1933 when he was then principal of the high school in Franklin, N. H. At Bates he took part in a teacher visitation program designed to help the admissions office, with a special emphasis on scholarships and student aid, and became campus testing coordinator as well as working in the field of teacher placement. Ray's address: 44 Wellman St., Lewiston, Maine.

While in Mt. Dora, Florida the Homer Rays called on Eunice Story Kline, 1915 Class Teacher, who was spending some time with her cousin there. She sent regards to all her students.

#### 1916

*Class Agent*

HELEN LIBBY RAY

425 Old Shawnee Road, Milford, Delaware  
New addresses: Elmer C. Estes, RFD, Sinclair Hill Rd., New Hampton, N. H.; Esther Copeland Ring, 20 N. Hayman, Colorado Springs, Colo.

"Across the miles" greetings came to us during the holidays from many classmates. Our thanks and appreciation to all who remembered us at that time.

The Class of 1916 regrets the passing of two classmates shortly after our reunion. Marion Morse Bartlett and Raymond Wright. Both were with us for our Fiftieth last August.

Stella Salisbury Seekins spent the winter with her children, visiting first in Brewer and then in Rochester, N. H. Last October Stella added to the facilities of Seekin's Camps on Moosehead Lake by the purchase of an adjoining camp and large dock. She planned to return to the lake about April first and supervise some improvements on her newly acquired property.

Myrtle Pushor reports that she has now retired. Last fall, during a teacher shortage at Westfield High School, she returned to teach in the commercial department for the duration of the emergency. As Myrtle wrote, "Let's plan a meeting again in 1967!" Please keep this in mind, Sixteeners!

Hazel Pushor Reagan and her husband are enjoying their usual interests and hobbies at home so much that they were not even tempted to go south this winter.

Etta Gray Collins spent part of the winter visiting friends in Long Beach, California. The day her card came, reporting 70-80 degree temperatures there, we were having a record-breaking spell of cold and snowy weather in Delaware. We were glad to hear that Etta was enjoying a well-deserved vacation in a warmer climate.

Van and Amelia Haskell Stevens (Ed. Note: The only two '16ers who married within the Class) stayed at their Peaks Island cottage until late September. They entertained eleven of their family at Thanksgiving and spent Christmas with their daughter and family in Pittsfield. Their grandson, William Cunningham, is a freshman at MCI this year and a member of the ski team.

Ruby Dodge Sawyer and her husband enjoy their retirement home in Newcastle and planned to stay there for the winter. They keep busy with hobbies, and Clifford's

work in advanced ceramics produces some fine pieces.

Alice Jones keeps very active with her hobby — rug hooking — and is taking three and a half hours of lessons three times a week. During the summer she had many house guests at her Cape Cod home.

Because Horace Newhouse was serving on the jury during November and December, he and Anne-Marie could not spend Christmas with their son, Bob, and his family of eight children at Providence, R. I., as they usually do.

Iva Gould Hollis entertained her granddaughter for the holidays. She reported warm, pleasant weather the early part of the winter in Pittsfield.

Glendon Libby has supplied the Class with duplicate slides he took at Reunion so that we may all enjoy them next August.

Elmer Estes and his wife have moved to a new location about two miles from New Hampton, N. H. (See address above.) Their place has many kinds of fruit trees and small fruits, and, being in the vicinity of Laconia and Lake Winnepesaukee, it should be an interesting and scenic spot for retirement living. Elmer's oldest son (Carl A. '39) is a colonel in the Air Force, and his youngest son (Ralph A. '45) is working for Grumman in New York, making space equipment for future moon flights. Their other son is a television engineer on Mt. Washington, N. H., and can be tuned in by his parents every evening as he gives the weather reports.

Olive Mayo Toft was hospitalized for five days in the early winter for a complete check-up. Her Christmas note reported that she was better and expected to return to work soon.

Edith Mitchell is enjoying retirement in Unity, Maine, where she and her sister Leola '23 live. Leola is still teaching.

Alton Durgin reports that his duties leave him only six hours a day at home. Despite his busy days he has kept in touch through letters with the activities of our Class. After a severe illness in the summer, he spent two weeks convalescing at his son's cottage on Lake Ontario. At last reports he was working again, with a very full schedule.

Mildred Webb Bailey visited her daughters, one in Portland and the other in Pennsylvania, this winter.

Rather frequent letters from Hazel Chandler Weston have given us interesting bits of news about several Sixteeners and other alumni, as well as long-past events of which we had not heard. She mentioned that many years ago she was employed at the Camden A&P Store while Jesse Bates was manager there. What a memory she has, recalling our days at MCI!

The Roaming Rays (Homer '15) "stayed put" pretty well this winter and enjoyed the usual number of guests. We are now, in early March, planning to leave the middle of this month for several weeks in Florida, with a visit at Marion, N. C., en route. We hope to see many of you at MCI next August.

(Ed. note: Many thanks to Helen for another fine batch of '16 doings!)

Walter (Jake) Colby reports that both a grandson and a granddaughter are now in Scouting and doing very well. Several years ago Walter was awarded the Silver Beaver, the highest award in Scouting and recently received a plaque, reading as follows: "Presented to Walter Colby on behalf of the Massachusetts Recreation Society in appreciation of many years in the field of recreation — December 1966." Walter retired on March 15, 1967. He has a great-granddaughter nine years old, who is "quite a gal," Walter says. The Colbys are planning to be at the Reunion in August.

The Rambling Rays (again, Homer '15) this past March spent an evening in St. Petersburg, Florida with Harry J. Wright '13 and Olive Ward Wright '19 at the home of mutual friends.

#### 1917

#### GOLDEN ANNIVERSARY CLASS

*Class Agent*

LYDIA BICKFORD SUSI

37 Lancey St., Pittsfield, Maine

New addresses: Mr. and Mrs. Floriman M. Hathaway (Helen Harris '19) 6053 Buffalo, Van Nuys, Calif.; Carolyn Smart Gray, RFD #2, Corinna, Maine; Mr. and Mrs. Newman Young (Ruby Hackett '16), 1080 NE 25 Ave., Pompano Beach, Fla.; Ruth Moore Johnston, Hamden Highlands, Maine; Grace Crocker Thomas, Islesford, Maine; Chester L. Nelson, 267 Pearl St., Bangor, Maine.

Two "lost" members of the Class of '17 have been "discovered" during the past year.



Dr. Harry W. Rowe '06 proved to be an old hand at cornerstone laying at ceremonies last August celebrating the completion of the new boys' dorm — as yet unnamed.



**Helen Rowe Smith**, it has been learned, resides at Blue Hills Falls, Maine; **Wallace N. Lee**, a resident of Lebanon, Maine, may be reached via the Milton Mills, N. H. post-office. Delighted to have you both aboard!

**Bertha Wheeler Carter** says that there is not much news to add except that she is enjoying a very busy retirement. Travel, garden.ng, writing, cooking, etc., seem to occupy her time, plus five grandchildren who are frequent callers at Carters' Corners, Etna, Maine.

"Pittsfield . . . On the Seabastcook," a definitive yet lively history of Pittsfield, was published late last spring by **Sanger M. Cook**. Sales were brisk from the start; those interested in obtaining any of the few copies remaining — certain to become collectors' items — might well contact Sanger in Pittsfield.

1918

Class Agent

HELEN CHILDS SHOREY

RFD #2, Pittsfield, Maine

Class Agent **Helen Childs Shorey** (address above), School Service Director for thirteen years in Southington, Conn., retired in June 1966. After twenty years of School Service Work as Director, Helen has returned to Pittsfield to make her home near her family. She was honored on her retirement by the Southington Education Association, the Southington School Lunch Service Association, and the Connecticut School Food Service Association, of which she was secretary of the executive board.

**Ervena Goodale Smith** has spent the fall and winter travelling in Europe with her husband Joseph, semi-retired. Ervena has spent the winter in California near her son and family, and future plans call for location in or near Portland, Maine. (Late Ed. note: Rockland, Maine.)

**Dr. John A. Small** retired from Rutgers University June 30, 1966 with the rank of Professor of Botany, Emeritus. He has been teaching general biology (laboratory) and plant ecology at Wheaton College during this spring semester.

**Frank Milan** came to Deer Isle, Maine in 1923 as principal of the high school. After a stint of seven and a half years Frank got the job of Rural Carrier and kept at that for 34 years until his retirement in December 1965. That winter he worked in his shop restoring old furniture and substituting a bit at the high school. Last spring Frank did some carpentering and in September went back into teaching! He is presently involved as coordinator of a work experience class, plus a class in algebra, with the prospect of more algebra to be added. No rest, Frank!!

**Vernon A. Libby**, general manager of the San Francisco Better Business Bureau since January 1955, was forced in September by health conditions to retire from that job and take a less active role — as management consultant for the Better Business Bureau. An editorial in a leading California daily, commenting on Vern's resignation, said in part: "Libby . . . has strong feelings on the need for observance of the highest ethical standards in advertising and selling . . . he refrained from coercive tactics and employed, instead, calm persuasion and appeal to reason. Since the whole concept of the Better Business Bureau is based on voluntary self regulation of business and industry, the Bureau could not have had a better man to serve as general manager for the past 12 years."

**Harold E. Cook** has been with the Hall & Knight Hardware Co. of Lewiston since 1936, as engineer and outside salesman and since 1948 as manager of the plumbing and heating division. Harold was married in 1930 and had one son, tragically lost in a



**Inez Knowlton Severance '22** showed no nervousness in taking her oath as Town Clerk of Pittsfield in March 1967. After all, the swearing in marked her 35th consecutive year at the post. **Carl E. Cianchette '37** did the honors.

sliding accident when six years old. Harold occasionally sees **Linwood (Zeke) Dwelley**, when they just might hash over the famed Class of '18 Class Ride.

Late news item reads that Class Agent **Helen Childs Shorey** and **Gerda Weeks Millett** returned from a winter's vacation at Waikiki Beach, Honolulu and subsequently spent some time with Gerda's daughter in California and also with son **Tom '48**. Tom is with the police force in El Monte, California, and Gerda and Helen had a tour of the department, learning how a big city police force operates with all its modern equipment.

An interesting note from **Harry P. Brann**. Harry from New Port Richey, Florida writes that while he is mostly retired he does contract work for large corporations, does site studies, real estate planning reports, and the like. Some retirement! Harry has been working in many different states. For example: in 1966 he did a job for Linde Air Products Co., covering lands in and around Youngstown, Ohio and later the same year did work for the Western Union Telegraph Co. in Georgia, Alabama and West Virginia. He has not been idle. Proof: his family consists of 2 girls and 2 boys, all married and well, plus 12 grandchildren, and as of late April, 2 more on the way. Harry's address: 43 Lexington Ave., Beacon Hill, New Port Richey, Florida.

1919

New addresses: **Olive Taylor Cory**, E.U.B. Church Camp, St. Mary's Ohio; **Ruth Moore Johnston**, Rt. 2, Box 40, Hampden Highlands, Maine.

**Olive Taylor Cory** (address above) has moved to a small home; her husband, Charles, retired from active ministry in the church in June, 1966. Olive regrets that she was unable to attend last summer's Alumni Day; really enjoyed it two years ago.

The **Clarence Days (Ethel Reed '20)** may be found at RD #2, Middlebury, Vt. Clarence is working part time, on a semi-retired basis for Middlebury College as plant engineer.

1920

Class Agent

HENRY W. NASON

366 Farmington Ave., Plainville, Conn.  
New addresses: **Martin C. Moran**, Apt. 2, 235 Main St., East Hartford, Conn.

**Basil W. Hunt** has retired from a most successful career with the General Motors Corporation. He joined General Motors in 1927 as a junior accountant, subsequently became involved in assignments as an audi-

tor in the company's world-wide subsidiaries, finding himself involved in the Far East and later in South America, where he was married in 1931. At the termination of WW II Basil became Supervisor of Overseas Audits for G.M. Daughter Susan has graduated from the University of Michigan Nursing School and plans to marry an Air Force trainee in June. Basil's address: 17 Woodside Park, Pleasant Ridge, Michigan.

**Vera Goodale Bailey** is still active in church and women's groups in her community of Rockland, Maine. She and husband Philip are well represented in their church choir. Phil's business is life insurance.

**Henry Nason** (address above) has earned a United States Patent entitled "Hydrofoil Stabilizing Means for Watercraft." Quite an amazing improvement, we understand, over previous hydrofoiling, and may even be applied to sailing craft. The invention relates to stabilizing devices for watercraft moving in a body of water and, more particularly, the invention is concerned with a hydrofoil type of stabilizing apparatus for sailing craft, motor driven boats, and other watercraft.

1921

Class Agent

FRANCIS W. SMILEY

Box 216, Pittsfield, Maine

New addresses: Mr. and Mrs. **Freeman Withee (Marjorie Merrithew '26)**, 24 Bates St., Pittsfield, Maine; **Edna T. Lenfest**, Box 35, Acton, Maine; **Vernon B. Lenfest**, 19 Concord Square, Boston, Mass.

**Christine Colson Mayhew** graduated as a Christian Science Nurse from the Tenacre Foundation, Princeton, N. J. in October 1966. Christine hopes, as we do, that she will soon have a permanent address in Maine.

1922

FORTY-FIFTH ANNIVERSARY CLASS

Class Agent

GILBERT A. SPEAR

Main St., Pittsfield, Maine

New Addresses: **Mary Rhodes Folsom**, 9 Howard St., Springvale, Maine; **Irene Fogg Molony**, Box 222, Orono, Maine.

1923

Class Agent

RAYNOLD L. FULLER

23 Sylvan Rd., So. Portland, Maine

New addresses: **Arabelle McChrill MacPhee**, Box 127, Skowhegan, Maine.

MCI Trustee **William A. Macomber**, well known throughout Maine for his distinguished career as a teacher, coach and col-



lege administrator, was honored at the traditional Colby Night Dinner in October. Bill is Director of the Division of Adult Education at Colby College.

**Leola A. Mitchell** is now instructing in English at the Unity (Maine) Junior High School. Leola has had a long and interesting career in Maine education, including posts in Howland, at Higgins Classical Institute, and as principal of Besse High School in Albion.

#### 1924

##### Class Agent

**E. BURNELL (BUN) OVERLOCK**

66 Presidents Road, Buzzards Bay, Mass.

New addresses: **Cornelia Adair Cole**, 13 Park St., Waterville, Maine; **Ruth Wilkinson Stoughton**, 8331 Larson St., Garden Grove, Calif.; **Maurice E. Graves**, 8010 Honey-suckle, Austin, Texas.

**Ruth Wilkinson Stoughton** (see address above) is a great admirer of **Bun Overlock's** news letters. (Note: Even Alumni Office admits he does a good job!) Ruth, now a widow, is working in insurance billing at a hospital. She has one daughter, four grandchildren, living in Connecticut. Ruth hopes someday to make a class reunion!

Early and enthusiastic arrivals to last summer's Reunion were **Wilfred J. Landry** and wife Mary. Will and Mary had a most eventful summer, one that included a family reunion in New Brunswick, Canada. Will is from a family of 10, 7 girls and 3 boys, now widely scattered. It must have been quite a party. The Landrys also visited with their daughter Rosemarie and son Robert Sweet, and three Landry granddaughters, Cris 13, Ann 11, and Dianne 7. Will is looking forward to an early return to MCI.

**Richard "Cutter" Tibbetts** made his usual fall pilgrimage to Palermo, Maine in November and was registered as one of the lucky hunters. Quite a trip from Delaware to take in pursuit of the wary buck. You really have to enjoy venison or that stimulating Maine air!

**Frances Noble** still resides at 20 Grove St. in Pittsfield and is employed at one of the local department stores near the old Bijou.

Another newsy letter from **Goldie Bryant** who apologized for her absence at last summer's Homecoming Day. Her daughter-in-law and grandchildren arrived that day for a month's visit. She is looking forward to Homecoming this year. She writes that on a recent trip to Pittsfield she heard the MCI bell ringing — which brought back a flood of memories. On her ride home to Madison with husband Colby she jotted down the following thoughts which she is sharing with us:

A sound is many things, to many different people. As a church to some a sanctuary to others just a steeple. I heard the bell of MCI ring clear through the winter air, And tho it had been many years, my mind went way back there.

I was a freshman going timidly up the walk, Proud to be a "freshie" even though too bashful to talk Then on through the years, until graduation day, And all the while the bell rang on, its beautiful message to say.

In how many minds has this bell left its mark? Lightening how many minds through sunshine and dark? Through how many countries over the years Has memory traveled, during laughter and tears?

May this bell long ring over campus and town Keeping faith with the youth who are seeking renown. May they go forth with pride, their sights ever high So the bell may peal out, "Well done, MCI."

Any and all members of the Class of '24 who visit Cape Cod this summer have a cordial invitation to look up the **Overlocks** who are located two miles from the Bourne Bridge in the Gray Gables section of Bourne.

A note from **Walter O. Gordon**. Walter retired in Oct. 1965 as Professor Emeritus



**ROBLEY H. MORRISON '31**, shown here on the Brazil-Bolivia border, spent a year in South America on work for the World Bank and Brazilian government in the field of transportation.

of Mathematics from the Pennsylvania State University after 37 years of Service. During an extended visit to Europe with his wife last year Walter attended the International Congress of Mathematicians at Moscow.

#### 1925

##### Class Agent

**MIRIAM McMICHAEL ROBINSON**

46 Lafayette Rd., Newton, Mass.

**Esther S. Bussell**, who has sent some of her former students onward and upward to teaching posts at MCI, is Chairman of the Department of Education at Lyndon (Vt.) State College with rank of professor. Esther's address: Box 57, Lyndon Center, Vt.

**Norman G. Hodgkins**, Carmel, Maine was another from '25 who enjoyed last summer's Alumni Reunion. Norm offered: "Keep going for the 200th!"

**Phillip T. Vroom**, husband of **Effie Walker Vroom**, retired recently after 29 years of service with the Central Maine Power Co.

#### 1926

##### Class Agent

**RENE DEVOE**

109 S.W. 41st Ave., Miami, Florida

Recently retired from seven years of pediatric nursing at the Milford (Mass.) Hospital, **Theo Davis Walker** is now doing private duty nursing. Theo has been married for 31 years — and happily, she adds!

According to a private grapevine, Mr. and Mrs. **Harold Louder (Ruth Mudgett '24)** became the grandparents January 11 of David Karl Allers. Little David made his appearance at Cumberland Center, Maine.

#### 1927

##### 40th ANNIVERSARY CLASS

##### Class Agent

**ANDREW J. KARKOS**

83 Lancaster Ave., Lunenburg, Mass.

The marriage of her youngest daughter August 7, 1966 prevented **Winifred Atwell Nordmark** from attending the MCI 100th Birthday party on the 6th. Perhaps this year, Winifred's address: 32 Wood St., Woodville, Mass.

Class Agent **Andy** and wife (**Irene Reynolds '21**) drove to California last year, left their car on the beach, and flew to Hawaii for a tour of island hopping. Quite a vacation, by all reports. Car was still on beach, ready for leisurely trip to their cottage in Belgrade Lakes, Maine. Andy is a guidance counselor at Fitchburg (Mass.) High School and finds it most rewarding.

#### 1928

##### Class Agent

**ELIZABETH HILLIKER LaFRANCE**

Box 188, Cumberland Center, Maine

New addresses: **Erma Marden Morse**, 130 Blackstrap Road, Falmouth, Maine; **Violet Maxwell Pierce**, 15 Center St., Newport, Maine.

The son of **Venessa Davis Fuller**, Vaughn Fuller, joined the faculty of So. Portland High School in September 1966 as an instructor in English. Vaughn has his degree from Brown University.

**F. Clark Thurston** has had a change of position from Manager, Technical Reports and Films to Business Management Staff, Space Vehicles Product Assurance, at the TRW Systems Co., Redondo Beach, Calif. The company was formerly known as the Space Technology Laboratories. Clark's address: 3436 Mulldae Ave., San Pedro, Calif.

**Dan Johnson** is vice president and secretary of the Asgrow Seed Co., Orange, Conn. Dan golfs, gardens, reads, and is sending son "Hap" to MCI this fall as a freshman.

#### 1929

##### Class Agent

**C. WALTER EVANS**

691 Lenox St., Athol, Mass.

New addresses: **Ethel Brown Thompson**, Upper Camden St., Rockland, Maine; **Lorna Cabel Fox**, Drake's Nursing Home, South Lincoln, Maine; **Jere D. Moynihan Sr.**, 7 Donna Road, Chelmsford, Mass.

**Grace Quarrington Corey** is teaching at So. Portland High School; son Jim has graduated from Bowdoin and is working for his master's at the University of Maine; daughter Barbara is a student at Westbrook Jr. College in the medical secretary course. A studious bunch, Grace!

**Madeline Coolidge McKinnie** reports that there is not much new — except frivolling about the Florida Keys this past winter. Madeline's summer address is not bad either: 848 Endicott St., Wiers Beach, N. H.

#### 1930

##### Class Agent

**ELEANOR A. TOOTHAKER**

21 Peltoma Ave., Pittsfield, Maine

New addresses: **Sylvia Weeks LaFleur**, 378 Pennington Dr., Mt. Holly, N. J.; **Clyde E. Higgins**, Presque Isle Rd., Caribou, Maine.

**Frederick Hammond** is chief of the fire department at Sanford, Maine. Fred is the father of two married daughters and has five grandchildren. His address: 7 King St., Sanford.

**Robert D. Moody** is employed at the Norton Co., Worcester, Mass. Son Ronald is principal of the Deer Isle (Maine) High School; son Michael is employed by the Scott Paper Co., Fairfield, Maine; and son Daniel is serving with the U.S. Navy. Daughter Nina is a senior in high school. Bob's address: 14 Cottage St., Spencer, Mass.

Travelling member of the class, **Frances M. Palmer**, has recently made a trip to the Canadian Rockies and to Glacier National Park. In the summer of 1965 Frances toured the Maritime Provinces. Frances, when not on the road, is a Dental Nurse and Dental Clinic Assistant in Newton, Mass.

#### 1931

##### Class Agent

**VINCENT L. HATHORN**

Taylor Point Road, Pembroke, Mass.

New addresses: Mr. and Mrs. **Kenneth Sargent (Eleanor Wyman '32)**, 46 Salem Ave., Montgomery, Ala.; **Nina Humphrey McDonald**, RFD #1, Pittsfield, Maine; **Ralph H. Spaulding**, East Holden, Maine.

**Edna F. Bailey** has had a long convalescence from a severe hip fracture sustained more than a year ago. Edna, a veteran teacher, slipped on a school corridor.



A graduate of Colby College, she has done graduate work at the University of Maine, Orono and Portland, Boston University, and has taught at Kingfield High School, Wilton Academy, Sanford High School and Gorham (Maine) High School. Edna's address: P. O. Box 16, Steep Falls, Maine.

**Marion Robinson Dyer** reports everything under control at the Dyer household. Marion lives in Maine; husband Walt still works in Boston for Universal Pictures, commutes weekends with #2 son Karl, a second year pharmacy student at Northeastern. #1 son Calvin is a Dartmouth graduate, has done graduate work at Indiana U., and is teaching at DePauw University. Daughter Jane has graduated from Jr. college, is engaged and working at the Maine Savings Bank. Marion's family title is "Chief Coordinator!"

Still teaching in the 6th grade in the science area at Belfast is **Clarice Garcelon Mitchell**. Clarice and family spend summers in Dixmont at the farm, winters in Belfast. Son Sam is in grade 7 at Clarice's school; son Sheldon attends the Belfast Area High School; Stuart is with the Army in Germany, daughters Sharon and Sonia are both residents of Dixmont. There are now three granddaughters for Clarice to brag about.

Class Agent **Vincent L. Hathorn**, Capt. USN, Ret., is general manager for the J. G. Sylvester Associates, Inc., materials testing and consulting engineers with laboratories in Rockland, Mass. Vin's address is shown above.

**Robley H. Morrison** is associated with Coverdale and Colpits, consulting engineers. Robley and Mrs. Morrison returned to the States in December, following a year in Brazil undertaking a transport study for the World Bank and the government of Brazil. Son Robley is married, teaching math in Millburn, N. J. schools; daughter is attending Ricker College, Houlton, Maine. Rob's nephew, Alan Kelley, is a sophomore at MCI. The Morrison address: 40 Evergreen Rd., Summit, N. J.

**Phillip E. Huff** is operating his own self-service grocery store in Burnham. The Huffs, Phil and wife Julia, had previously been employed by Bud's Market in Pittsfield.

**Miles Snowman** is custodian at Mound Park Hospital, St. Petersburg, Fla. He has three daughters, Lena 25, Esther 22 and Sandra 21. The Snowman address: 825 - 60 Ave., NE, St. Petersburg.

### 1932

#### THIRTY-FIFTH ANNIVERSARY CLASS

##### Class Agent

**BARBARA STANLEY McLEAN**  
5817 Park Drive, Margate, Florida

New addresses: **Katherine James Charest**, 15 Sanford St., Pawtucket, R. I.; **Mona Hunt Garrett**, 2514 Columbine, Durango, Colo.; **Verna Merriweth Hanson**, 37 Winslow St., Gardiner, Mass.

### 1933

##### Class Agent

**WILLIAM S. COFFIN**  
23 Greenwood St.  
Augusta, Maine

New addresses: **Virginia Wright Sappington**, Rt. #1, 11 Ridgewood Dr., Belton, Texas; **Viola Stafford McKenna**, RFD #1, Box 83, Bath, Maine; **Marguerite Tozer Libbey**, Box 677, Homestead, Fla.

**Arthur W. Danielson** has proudly announced the birth of another granddaughter, Maria at La Paz, Bolivia last October. Art's address: 206 Mountain St., Sharon, Mass.

### 1934

##### Class Agent

**MIRIAM PALMER GATES**  
Box 68, Charlestown, N. H.

New addresses: **Nedra Harding Townes**, Box 41, Gloucester, Mass.; **Arline Quint Gordon**, 140 Ridge Road, Rutherford, N. J.; **Leslie S. Hupper**, Libby Ave., Gorham,

Maine; **Ruth Moore Fox**, 31 Middle St., Skowhegan, Maine; **Victoria Hamilton Jazwiak**, Box 1523, Ocala, Fla.

**Miriam Palmer Gates** writes that she greatly enjoys being Class Agent to the "very special class" of 1934 and finds it most interesting to hear from and about them. Nancy, oldest child, is a graduate of the University of New Hampshire and works in a local bank; Hessler is a senior at Rensselaer and plans to earn a master's degree; John 16 works at a drug store, plus two other jobs; Sue 14 is a veteran baby sitter! Miriam's husband is an engineering designer and Miriam for thirteen years has been organist at the Universalist Church. A busy family!

### 1935

##### Class Agent

**GERALDINE MANN BROWN**  
86 Main St., Norway, Maine

New Addresses: Mr. and Mrs. **Marvin W. Huff (Arlene Walker '37)**, RFD, Burnham, Maine; **Carl F. Goodridge**, 5 Nichols St., Pittsfield, Maine.

**E. Robert Kinney** has been elected to the Board of Trustees at Bowdoin College.

Consulting engineer **Guy Susi** has been named to the board of directors of the First National Bank of Pittsfield (Maine). Guy, a graduate of the University of Maine, has been active in civil affairs and is presently serving on the Pittsfield Planning Board. Daughter Lynn, MCI '63, is a student at the University of Maine; son Nick is a senior at MCI.

### 1936

##### Class Agent

**ALICE CONROY CRABB**

219 Richland St., So. Portland, Maine  
New addresses: **Frances Maynard Condy**, 1209 Wellington Rd., Colonial Heights, Va.

A nice note from **Charles M. Thomas**. May we quote? "Late in June, I noticed a Maine registered car in our apartment parking lot. Next day, my wife noticed a young man at the car and mentioned I had gone to school in Maine. He turned out to be **John Elderkin** of Pittsfield, MCI class of '62!! He had recently married **Andrea Fowler** (MCI '62) and was visiting her grandmother here in Kansas City en route to their new home in San Antonio, Texas, where he'll continue his schooling under the GI Bill. From them I learned that **Arnold Dunning '62**, son of **Audrey Green Dunning '36** is returning to MCI in a teaching capacity. Many people known to me in 1936 were familiar to these young people in '66. On July 3, 1966 on the way to the Imperial Shrine Session in San Francisco, I met Alice and Roy U. Sinclair in the Los Angeles Airport and rode with them on the plane to S. F. When I was at MCI, Roy was my mentor — he is now Potentate of Bangor's Anah Temple and his charming wife is now Dean of Girls at MCI!" Most interesting, Charles. His address: 1707 Concord Court, Kansas City, Missouri.

### 1937

#### THIRTIETH ANNIVERSARY CLASS

##### Class Agent

**AUBREY W. VOSE**

4664 Del Moreno Drive, Woodland, Calif.  
New addresses: **R. Franklin Raymond**, Rt. #1, Box 141A, Jackson, Miss.; **Charles W. Mitchell**, Beech Hill Rd., Exeter, N. H.; **William M. Hanson**, 404 Paseo de Paula, Casa Grande, Arizona; **Frances Young Rosenbaum**, 1095 Claridge Ct., Lexington, Ky.

**Phyllis James Frink** is presently employed at the Standard Romper Co. in Brunswick, Maine. Phyllis has found it rather rough after not having worked out of her home for twenty years. Son Bob is a June 1967 graduate from Morse High School and has been accepted at the Portland Business School. Phyll's address: 1204 Washington St., Bath, Maine.

**Andrew M. Laughton** is vice principal of the Bourne (Mass.) High School. He occasionally gets to see "Bun" Overlock '24 who also is entangled in education in the same area.

### 1938

##### Class Agent

**ROBERT N. HUBBARD**

31 Summer St., Pittsfield, Maine  
New addresses: **Ronald M. Reed**, 20 Deerfield Dr., Montpelier, Vt.; **Virginia Davidson Wilson**, Dolven Ct., Apt. 110F, North Palm Beach, Fla.; **Dorothy Emery Dallaire**, Jones Inn, Newport, Maine.

**Robert M. Healy** is maintaining the Old School tradition; son Rex will be attending MCI next fall as a senior. Bob's address: 217 Forest Glen Ave., Franklin Lakes, N. J.

A trip to Europe has been reported by **Ruth Shuman Valore**. Only that, nothing more, except that it was wonderful. Stingy writing, Ruth.

**William B. Talbot** was named president of the Maine State Bar Association in August, 1966. Bill's address: Main St., Machias, Maine.

### 1939

##### Class Agent

**RITA BOUCHARD NORTON**

106 Yupon Dr., Alexandria, La.  
New addresses: Lt. Col. **Carl A. Estes**, 3494 Latana Way, Beal AFB, Calif.; **Mary Gerow Lessard**, Montcalm St., Waterville, Maine; **Norman B. Young**, 17800 Vineyard, Derwood Md.; **Wilbur H. Towle Jr.**, Rt. #8, Box 547, Tucson, Arizona; **Mildred Merrieth Bragg**, 788A Dovo Circle, Ft. Devens, Mass.; **Muriel Young LaBarge**, Malibu Circle, Bailey's Cross Rd., Falls Church, Va.

### 1940

##### Class Agent

**ROBERT M. MOULTON**

832 Sawyer St., So. Portland, Maine  
New addresses: **Harston W. Welch**, 1010 Vasquez, Golden, Colo.; **Clarence A. Hamilton**, R-2, Bangor, Maine; **Donald D. Susi**, 46 Follybrook Blvd., Wethersfield, Conn.; **Virginia F. Almonte**, 346 Eliot St., Ashland, Mass.; **Francis J. Callahan**, 15 Dukes Rd., Wellesley, Mass.

## FOR YOUR CONSIDERATION

The Trustees of Maine Central Institute recall with grateful memory the names of friends and alumni whose annual donations, capital gifts, and bequests have been such an important factor in the School's growth and achievement in the past years. Of growing importance, however, is the need for future bequests, both large and small.

In naming MCI as a beneficiary or residuary legatee, one should realize that he is selecting the one best means of perpetuating, through his estate, his own hopes and prayers for a better America and a better world through education.

The Headmaster or Trustees will always appreciate the opportunity of discussing with friends the subject of bequests.

The following form is simple — and it can be used for any amounts.

"I GIVE AND BEQUEATH to the Trustees of Maine Central Institute, a corporation located in the Town of Pittsfield, Maine, the sum of ..... dollars to be used for the general purposes of the School at the direction of the Board of Trustees."



**John H. Cole, M.D.**, is chief anesthetist at Holiday Hospital, Orlando, Florida. Jack has three daughters 18, 15 and 13; the oldest is a freshman at Florida Southern College. Jack would very much like to hear from former classmates. His address: 517 Derry Down Rd., Orlando, Fla.

Byron G. "Bud" Dow, husband of **Alma Ellingwood Dow '40**, last spring purchased the Pittsfield Hardware and Plumbing Co. Bud served an apprenticeship in the hardware business as a sales representative for the Edwards and Walker Co., Portland, for 25 years, a fact made evident by the dressed up appearance of his new store. Daughter **Linda** is a member of the MCI graduation class of 1967; for further news of the Dow family turn to 1964 Class Notes.

#### 1941

New Addresses: **Donna Leavitt Furman**, 36 Bolton St., Portland, Maine; **Alton L. Higgins**, 47 Middlebrook Dr., Springfield, Mass.; **Cecil F. Coombs**, 1418 Albany St., Schenectady, N. Y.; **Ray A. Cook**, 185 Main St., Winthrop, Maine;

**Gladys Gould Cookson** and husband Norman observed their 25th wedding anniversary at the Jefferson Hotel, Waterville, in December. The party was arranged by sons **Wayne '61** and **Craig '65** and was attended by twenty friends. Wayne is a student at Northeastern University; Craig is a student at Wentworth Institute, Boston.

Currently teaching science in the Sanford, Maine Junior High School is **Donald M. Howard**. Upon Don's arrival at Sanford he was contacted by **Margaret Gosline Blaisdell '42** from nearby Springvale. "It's a help to renew acquaintances from MCI," says Don.

#### 1942

### TWENTY-FIFTH ANNIVERSARY CLASS

#### Class Agent

**ARLENE FREDERICK BEARDSLEY**

25 Congress St., Portland, Maine

New addresses: **Marguerite Taylor Shute**, 9709 Rosemaryville Rd., Upper Marlboro, Md.; **Irene Goodrich Moyer**, Apt. 510 Lynn Shore Drive, Lynn, Mass.; **Elaine Enman Winslow**, 88 Allen St., Bangor, Maine; **Helen Charity Elliott**, 141 E. 33 St., New York, N. Y.; **Jeanne Palmer Noble**, 5681 79th Ave., No., Pinella Park, Fla.

**Carolyn Brown Foster** writes from 34611 Russell Place, Yorktown Hgts., N. Y. that the Fosters would be pleased to have classmates and friends call when in the vicinity. There are 4 smaller Fosters, aged 16, 14, 12 and 5; three girls and one boy.

#### 1943

New addresses: **Natalie Shuman Brandon**, 2091 S.W. 30th Terr., Ft. Lauderdale, Fla.; **Margaret Shaw Starbird**, RFD #1, Box 57, Pittsfield, Maine; **Ivy Jean Short Smith**, Box 443, Newark, Del.

**Frances Wilson McCormack** is still with the W. J. Megin Co., Inc., general contractor, Naugatuck, Conn. Husband Murray is

owner and operator of McCormack's Shell Service, Oakville, Conn.; son Steven is a senior in high school.

Teaching in the 2nd and 3rd grades in Gardiner, Maine is **Mary Buker Foss**. Mary's address: 123 Brunswick Ave., Gardiner Maine.

#### 1944

#### Class Agent

**BEATRICE WRIGHT CARTER**

1260 Grant Road, East Wenatchee, Wash.

**Ival L. (Buddy) Cianchette** in August was elected charter chairman of a new Heavy and Highway Division of the Associated General Contractors of Maine. The new division will represent the association in dealings with the state government.

#### 1945

#### Class Agent

**LEWIS R. FITTS**

RFD #1, Pittsfield, Maine

New addresses: **Charles L. Pease**, 12436 Military Rd., Seattle, Wash.; **Roger B. Percival**, 9 Crescent View Ave., Cape Elizabeth, Maine; **Dorothy Austin Turner**, 15 Kennison St., Augusta, Maine; **Ralph A. Estes**, RFD, Sinclair Hill Rd., New Hampton, N. H.; **Joan LaForge Johnson**, 52 South St., Calais, Maine.

**Hazel Dunton Cavins** writes from Woodstock, Illinois that her family is nearly grown up. Vonnice is married, has a little boy, making Hazel a proud grandmother; Suzanne has graduated from Woodstock High School where Carla is a junior. Hazel hopes to get back for reunion when the family is less expensive!

#### 1946

#### Class Agent

**STANLEY G. WYMAN**

346 Elliott St., Ashland, Maine

New addresses: **Ruth Shaw Thomas**, Box 13, Lincoln, Maine.

Class songbird **Freda Gray Masse**, instructor in voice at Colby College, is still impressing concert audiences. Following an appearance at Lorimer Chapel last fall a reviewer stated the following: "The great contrasts of songs plus Mrs. Masse's musicianship and infectious interpretation and presentation combined to make an enjoyable afternoon for all who attended." Freda in November made a two-week concert tour to many states, including Mississippi, where she sang with a full orchestra.

**Merlon P. "Emmy" Tilton**, Pittsfield, employed by the L. & H. Chevrolet, Inc., has been presented the Chevrolet Truck Sales Honor Club Award and has been accepted into the Legion of Leaders Club, a car sales honor group.

**Doris Goodrich Stone** was sorry to have missed the class 20th reunion last summer; says she hates to acknowledge being out of school that long; Daughter Dawn is a senior at Falmouth (Maine) High School; David is an eighth-grader. Doris' address: 3 Pitt St., Falmouth Foreside, Maine.

**Jeanette Webb Fitts** and husband **Gerald '47** were hosts to the 20th Reunion Class of 1946 at their cottage on Sibley Pond August 6th. Among the happy visitors were **Stan and Joyce Almonte Wyman**, **Kenneth and Evelene Lancaster Cianchette**, '42 and '46, **Durward and Margaret Webb Emery**, '46 and '47, **Dick and Alice Craig Anderson**, '47, **Phyllis Frederick Luke**, '47, **Paul and Olivia Danielson Hobbs**, '46, **Rebecca Morrill Webber**, '46, **Patricia and Merlon Tilton**, '46, **Desmond and Jacklyn Richards Fuller**, '47 and '46, and daughters **Vicki and Dottv**, **Gerald and Jeanette Webb Fitts**, '47 and '46, and sons **Gary '69** and **Kevin**. Phone calls were received from **Phillip Bickford** and **Sidney Shuman**. Plenty of loud laughs and giggles when the ancient photos were circulated. A general consensus that no one had changed in the least. Quite a party!!

#### 1947

### TWENTIETH ANNIVERSARY CLASS

#### Class Agents

**ALICE CRAIG ANDERSON**

River St., Norwell, Mass.

**JOHN L. LUKE**

79 Grove St., Brewer, Maine

New addresses: **Pauline Spencer Reynolds**, 4908 Sprayer Ct., Alexandria, Va.; **Ruth A. Frazier**, 35 Jacqueline Rd., Waltham, Mass.; **Ethlyn Grindell Hill**, 413 W. Douglas, Midwest City, Oklahoma; **Albert S. DeBeck**, Michael St., R. 3, Skowhegan, Maine.

**Ethlyn Grindell Hill** and husband Senior Master Sgt. Bill are currently sporting an APO address. Okinawa, we are told. The rest of it: 18th FMS, Box 221, APO San Francisco 96239.

After MCI graduation **Lendal Dahlgren** completed a course in electronics at DeVry Technical Institute, Chicago. He has been employed by Sears Roebuck & Co. since 1953. Married in 1954, Lendal and Wahneta have 3 girls, Andrea, Heidi and Enid. The address: 105 Portland St., Yarmouth, Maine.

#### 1948

#### Class Agent

**WILLIAM R. HATCH**

937 Saratoga Dr., Palatine, Illinois

New addresses: **James O. Gamble**, 121 State Park Dr., Bay City, Michigan; **Dorothy Menendez Russell**, 32 Peltoma Ave., Pittsfield, Maine; **John I. Judson**, 1310 Shorewood Drive, LaCrosse, Wis.; **Robert J. Hughes**, 3360 Litchfield Rd., Virginia Beach, Va.; **Barbara Brawn Pray**, Pond Rd., Wayne, Maine; **Marilyn Bessey Buchanan**, RFD #2, Guilford, Maine; **Jocelyn Besse Kenney**, 2025 Hoover Rd., Niskayuna, N. Y.; **Herbert M. Condon**, 1302 Rubenstein, Encinitas, Calif.; **William E. Staples**, 21 Cherryhill Terr., Waterville, Maine.

**Jere E. Freeman** has been named plant foreman for the Charlotte, N.C. plant of the J. D. Cahill Co. Jere, wife and three children have been busy getting settled. Jere's new address: 2249 Falmouth Rd., Charlotte, N.C.

**Gerald E. Hodge**, Brewer, Maine was presented a trophy in March in appreciation of his work with the basketball team of the Eastern Maine Vocational Technical Institute, Bangor, in its first season. Gerry's address: 15 Sargent St., Brewer.

#### 1949

#### Class Agent

**EMILY SNOW SINCLAIR**

RFD #1, Pittsfield, Maine

New addresses: **David S. Silsby**, 19 Pleasant St., Augusta, Maine; **Kenneth A. Robinson**, 1227 Bluegrass Rd., Vista, Calif.; **Domenic J. Gacetta**, Clover Lane, Crestwood Estates, Barre, Vt.; **Joyce Dobson Cook**, Box 252, Pittsfield, Maine; **Capt. Robert J. Burns**, 102 California, Jacksonville, Ark.

S/Sgt. **Gladwin A. Tilton** and wife Beatrice announced the arrival of Robbin Liza April 22, 1966. Gladwin has been in the Army for 15 years, is currently stationed at the Pentagon, Washington, D.C.

**Hartland L. Cushman** was appointed superintendent of School Administrative District #48 in April. The district comprises the towns of Corinna, St. Albans, Newport, Plymouth, Palmyra and Hartland. He had previously been serving as assistant superintendent for SAD #48. Hartland had been principal of Dexter High School 5 years previous to his assistant superintendency. He is married to the former **Rita Dahlgren '47**; there are two smaller Dahlgrens, Camille and Lisa.

**Philip A. Short** lives at 531 Fairfield Ave., Ridgewood, N. J., has two children. Stephen and Allison. Phil is supervisor of life insurance sales for New York Life Insurance Co.



Donna, Dayle, Diana and Debbie, members of the William Hendricks Jr. '47 family, proudly display oversized Christmas stockings. Bill is assistant superintendent of the Lewiston (Maine) Gas Co.





**YOUNG BILL ROACH** proudly displays a cluster of puppies at his Honolulu home. Dad is Clyde J. Roach '50, serving with Naval Intelligence at Pearl Harbor.

#### 1950

*Class Agent*  
**WILLIS W. STROUT**  
Main St., Milbridge, Maine

New addresses: **Abel D. LaJoie**, 1407 Woodridge Ave., Hurst, Texas; **Alan A. Ranger**, 4913 N.W. 58 St., Oklahoma City, Okla.; **Robert E. Ames**, Chase Pond Rd., York, Maine; **Annette Mann Spivak**, 12 Marlowe St., Charleston, S.C.; **David W. McLellan**, 4 Meadowview Rd., Cumberland Center, Maine; **Bruce G. St. Ledger**, 138 Arcadia St., Allendale, N.J.; Mr. and Mrs. **Raymond E. Buxton** (Joyce Buteau '53), 17 Quincy St., Winthrop, Mass.; **Robert W. Jackson**, Box 69, Oak Hall Sta., Penn.; **Dianne Wakefield Hurley**, 38 Pondover Rd., Billerica, Mass.; **Dorothy Graham Obar**, 38 New St., Naugatuck, Conn.

**William P. Zoidis**, president of the famed Pilot's Grill, Bangor, has been named president of the Maine Restaurant Association. A fitting reward; Bill's lobsters are the finest ever.

The engagement of **Colleen Roundy** to Edgar Rohrer was announced in November. Colleen has been enjoying the terrific job of program director at the Rockingham, Bay State, Foxboro and Suffolk Downs race tracks; Edgar is employed by Orth-Tec Corporation, Salem, N.H.

**Philip B. Foster** in August 1966 was appointed manager of manufacturing budgets for Hudson Pulp & Paper Corp. at their Palatka, Fla. plant. Phil and wife Arline have three children. Their address: East Palatka, Fla.

**Joanne Peterson Adams**, 52 Longwood Ave., Augusta, Maine, is employed by the State of Maine Dept. of Health and Welfare, Division of Accts. and Audit. Joanne and husband Dwight have two sons, Stephen, a senior at Cony High School, and Dan, a sophomore. Dwight is a rural mail carrier. Joanne much enjoyed visiting with Pittsfield friends last summer; should do it more often!

#### 1951

*Class Agent*  
**ROBERT C. HUTCHINSON**  
63 Mayflower, Augusta, Maine

New addresses: **Alice Fitts Ross**, RFD #2, French Mill Rd., Dexter, Maine; **Marie Morrison Cooper**, 31 Paint St., Natick, Mass.; **William J. White**, RR 9, 3930 Aylesbury Rd., Topeka, Kansas; **Walter S. Allen**, 2010 Redway, Houston, Texas; **Nancy Hatch Winship**, 40 Highland St., Gorham, Maine; **Thomas E. Shea**, Quarters #8, Ft. Hancock, N.J.; **Capt. Edmund A. Mercier**, 114C, Bastogne Rd., Ft. Lee, Va.; **Robert B. Shumway**, 946 Pleasant St., Worcester, Mass.; **Edwin C. Auslund**, RFD #1, Box 298, Warren, Maine.

**William J. White** is presently assistant manager of Harding Glass of Kansas. Bill has three daughters, 14, 11 and 7. For address see above.

Doctor **Robert R. Collier** is still in New York City, still wants to see MCI people, will help with places to stay and sight-seeing information. Someone should call him on these generous offers! Bob is now assistant medical director in the home office of the Equitable Life Assurance Society and has an appointment to the Cornell Medical Division at Bellevue Hospital as an assistant clinical visiting attending. Bob's address: 305 E. 40th St., New York City.

From **Irene Madden Roche** comes the good news of the birth of Irene's and John's first child, a boy, Forrest Bregny, February 17 in Boston. Grandpa Forrest J. Madden of Greenfield, Maine — the fairest village of all — must have been pleased by choice of name. Irene's new address: 40 Russell St., Cambridge, Mass.

**Class Agent Bob Hutchinson**, Augusta builder and developer, is expanding the Mayflower Development in that city in several directions. Bob has recently purchased land enough for 240 lots in the highly desirable Mayflower section, to be known as Lombard Farm Development. Work in this section will commence in 1968.

#### 1952

**FIFTEENTH ANNIVERSARY CLASS**  
*Class Agent*  
**NANCY SINCLAIR WILSON**  
29 Hardwick Ct., Persippany, N.J.

New addresses: **Dexter B. Dyer**, North Windham, Maine; **Louise Kellis Munch**, 212 Center St., Brewer, Maine; **Robert J. Belanger**, 8700 Rogers Place, Orlando, Fla.; Mr. and Mrs. **Charles E. Whitman** (Janet Pease '61) Phillips, Maine; **Sandra Humphrey Carson**, 366 Bedford Circle, North Syracuse, N.Y.; **1st. Phillip R. Brown**, 1416 Huntington Way, Norman, Okla.; **Robert E. Knowles**, Unity, Maine; **Kenneth E. Pinkham**, 94 Graham Rd., East Hartford, Conn.; **Rodney E. Russell**, RFD #1, Lisbon, N.H.; **Ralph O. Braley**, 622 Plymouth St., E. Bridgewater, Mass.; **Carlene Emery Milbury**, 1515A Werner Park, Ft. Campbell, Ky.; Mr. and Mrs. **Armour W. Brown** (Loretta Doherty '53), 10 Hathorne St., Pittsfield, Maine.

The Rev. **Clifford E. Bubar** and wife LeEllen are missionaries with the Baptist General Conference at St. Croix, the Virgin Islands, where they have been working since August 1965. Clifford received a B.A. degree from the Trinity Bible College, Clearwater, Florida in 1965, prior to his present ministry in St. Croix. The Bubars have one son, Mark. Their address: Box 637, Fredriksted, St. Croix, Virgin Islands.

**Shirley M. Fields**, now working at the Bangor Public Library has, with a friend, purchased a house at 371 Lincoln St., Bangor. Shirley has rashly said that she would enjoy having old friends visit, so let's put her to the test!

The husband of **Glenys Hill Gifford**, Lt. Cmdr. R. M. Gifford, is executive officer of the submarine Angler, based in New London, Conn. Glenys' address: RFD #3, Box 425, Richard Road, Gales Ferry, Conn.

#### 1953

New addresses: **Thurlo S. Cooper**, 21 Andrews Ave., Falmouth, Maine; **Paul N. Kimball**, 13 South Lockett Woods Rd., Beacon, N.Y.; **Susan Robinson**, 458 Huntington Ave., Boston, Mass.; **William E. Sullivan**, RFD #1, Ridge Rd., Fairfield, Maine; Mr. and Mrs. **Glenwood McDougal** (Alice Marie Dunton), NMVTI, Presque Isle, Maine; Mr. and Mrs. **F. Vaughn Philbrick** (Pauline Hoskins), 41 Main St., Tariffville, Conn.; **G. David Fenderson**, 9 Birch St., So. Burlington, Vt.; **Lawrence W. Goodwin**, 2324 Brightseat Rd., Landover, Md.; **Alice Reed McInire**, 203 Tarringford East St., Tarringford, Conn.; **Charlene Hunt Call**, RFD #1,

Burnham, Maine; **Adrian A. Goucher Jr.**, 269 Marcy St., Southbridge, Mass.

Chief Warrant Officer **Edward J. Jewett** has been assigned to the Helicopter School, Ft. Walter, Texas in preparation for a return visit to Vietnam. His address: Officer Company, Ft. Walters.

**Charles F. McDonald Jr.** is an instructor in science at the Wells (Maine) Junior High School.

In July 1966 **John H. Hartleb** and wife Nancy were most pleased by the arrival of John Blane Hartleb, all 8 lbs. 6 oz. of him. He will be called Blane, possibly to avoid confusion with his Old Man.

**Louis Pepin** and **Marlene Berry Pepin** are now located in the Rockland, Maine area, where Louis has been named officer-in-charge of the Rockland Social Security Administration. Louis has been with the Social Security Administration for 10 years. Two small Pepins: Brice 12 and Carl 9.

#### 1954

New addresses: **George W. Barker**, 10 Plant Ave., Hudson, Mass.; **Frank F. Wilson**, Jamaica Way Tower, Boston, Mass.; **Marietta Williams Reid**, 191 Moosehead Blvd., Bangor, Maine; **James A. Arey**, 80E Hartsdale Ave., Hartsdale, N.Y.; **James P. Dutton**, Box 125, Vienna, N.J.; **John W. Nelson**, Box 1657, New Port Richey, Fla.; Mr. and Mrs. **Edwin B. Christy** (Geraldine Follette '55), 35 Wedgewood Rd., Portsmouth, N.H.; Mr. and Mrs. **Elwood K. Lovejoy** (Gloria Bridgham '53), 181 Spring St., Gardiner, Maine; **Joseph D. Gould**, 29 Nelson St., Bangor, Maine; **Allen R. Havey**, 3406 Douglas, Midland, Texas; **Marjorie A. Monk**, Burnham, Maine; **David M. Hall**, 8811 Valleyview Dr., Huntsville, Ala.; **Lois Fields Taylor**, 96 Palm St., Bangor, Maine; **Barbara Small Pomeroy**, 30 Harriet St., Pittsfield.

**Donn S. Varnum** is a senior research assistant at the Jackson Laboratories, Bar Harbor, Maine. Wife Janet teaches in the 6th grade; son Kenneth is a junior primary. The Varnum address: 14 Newton Way, Bar Harbor.

**Lois M. Fields** is working at the Pratt & Whitney Aircraft plant at East Hartford, Conn. Lois' address: 930 Wethersfield Ave., Hartford, Conn.

#### 1955

*Class Agent*  
**SHEILA COOKSON ALLINSON**  
224 S. 132nd St., Seattle, Wash.

New addresses: **Leland B. Akerly**, Griesdick Hall, St. Louis, Mo.; **David H. Blachly**, 15 Shannon Dr., Bel Air, Md.; **James A. Miller**, 16 Osgood Ave., Mexico, Maine; **Joanne G. Withee**, 1135 Milky Way, Denver, Colo.; Mr. and Mrs. **Colby L. Whitaker** (Judy Richardson '56), R-2, Waterville, Maine; **Richard A. Horne**, Hanover, Maine; **Elizabeth Laney Payne**, 8 Coburn Ave., Skowhegan, Maine; **Clifford H. Scott**, Harriman Road, Merrimac, Mass.; **Richard M. Levine**, 66A Charlesbank, Waltham, Mass.; **Scott H. MacLean**, 16 Nancy Dr., Brunswick, Maine.

**Dana L. Fields**, instructor in English at MCI for many years and housemaster of Weymouth Hall, is principal of the Besse High School, Albion, Maine.

**Francis and Anne McCready Bowen**, Janet 9 and Brenda 7 have been in Bermuda for the past 6 years. Good duty! Francis is a senior field engineer with Bendix Field Engineering Corp., under a contract with the National Aeronautics & Space Administration.

**Clifford H. Vining** and **Thelma Sennett Vining** '53 have one son, Michael, 3 years. Cliff is night foreman for Coles Express, Bangor; Thelma is a teacher at John Baptist High School, Bangor. The Vining address: 165 Allen St., Bangor, Maine.



1956

Class Agent

JUDI BURKE SIMONTON

9 Cedar St., Camden, Maine

New addresses: **Gregory S. Libbey**, Box 677, Homestead, Florida; **Brian L. Cowan**, Box 71A, Auburn Rd., Londonderry, N. H.; **Judy Giovanucci McCrone**, Mississippi State College for Women, Columbus, Miss.; Mr. and Mrs. **Robert A. Denbow** (Mary Kay Scott '58), Elm St., Newport, Maine; **Robert D. Willard**, 20 Paramount St., Seymour, Conn.; **Donald F. Fenton**, Box 155, Hudson, Maine; **Richard C. McFarland**, 39 High St., Bar Harbor, Maine; **Philip R. Collins**, St. Agatha, Maine.

**Elsia Ilvonen** of Owls Head, Maine became the bride of **Richard C. McFarland** June 27, 1966 at St. Bernard's Catholic Church, Rockland. Elsia is a graduate of the University of Maine and employed as a teacher in the Norwalk, Conn. school system. Richard is a graduate of the Maine Maritime Academy and is employed as a chief engineer by the American Export Isbrandtsen Lines, New York.

**Richard W. Michaud** earned a master's degree from Boston University in 1963 in social work. He is also certified with the Academy of Certified Social Workers. Dick's address: Bolton Hill Rd., Augusta, Maine.

**Joseph E. Oliver** is now employed by Sylvania Electric Co. as a development engineer at Woburn, Mass. Joe is remarried to the former Mary L. Tibbetts of Danbury, N. H. and resides at 4 Daniels Rd., Wenham, Mass.

Lt. Cmdr. **Tom Kelly** has received a master's degree in political science from the U. S. Naval Postgraduate University in Monterey, California. Tom is a career man in the U. S. Navy.

**Sallie Sinclair Huot** held an open house at the home of her mother, Mrs. Roy U. Sinclair, at the Reunion last summer. Among the guests at this most successful party were **Bill and Judy Maden Pickard**, **John and Clair Kelley**, **Priscilla Doncet Proctor**, **Bob and Grace Mercer Brown**, **Eva Allen Charity**, **Howard and Judi Burke Simonton**, **Janet and Ed Guiski**, **Wendell and Ann Witham Higgins**, **Marilyn Chadwick**, Mr. and Mrs. **Reginald Haynes**, **Sue and Norris Ashe**, **Tom and (Izzy) Elias Robinson**, **Travis '57 and Judy Merrithew Payne**. Former Headmaster **Howard Niblock** and Mrs. Niblock were among the guests.

**Nancy Howe Haley** and husband **William** live at RFD #3, Buzzards Bay, Mass. where Bill owns and operates a men's clothing store. Nancy has two daughters, **Pamela** and **Kim**.

Class Agent **Judi** has come in with some last-minute notes. Well written, and most welcome. Let's let Judi take it from here:

"Welcome to the 1967 *Alumnus*, friends. This has been a busy year for the Simontons. Your Class Agent still manages to be busy with home, Mary-Ella and being Executive Assistant to a retired architect in Rockport. The response to my letters, giving envelopes and S.O.S. post cards has been good, but I hope it will be better as the weeks go on before the Fund closes in August. (Editor's note: Nicely said, Judi!)"

"**Gregory Libby's** new address is his wonderful huge trailer house with an expansive living room, even! He, his wife and daughter live in Bellevue Trailer Park, Old Orchard Beach. Greg is in the harness racing sport, training horses on the Beach during the winter and racing them throughout New England during the summer.

"**Donna Thompson Perkins** is a busy mother of a boy and a girl. She makes her own clothes and those for her children. Donna was always a wonderful home ec student. She even finds time to be a teacher

aide at her local school. She sees **Lois Langley Trafton** and **Clivia Austin Sinclair** often.

"**Drena Proctor Beale** and her Air Force husband live at RFD #5, Box 527E, Orlando, Florida. She is just back from Honolulu and is at McCoy Air Base in Orlando.

"**Richard Michaud** heads up a state-wide (Maine) program of organization and social planning for senior citizens. He and his wife, **Joyce**, have two girls.

"**Donald Fenton** is at Box 155, Hudson, Mass. Don was married in 1958 to a Maine girl, **Nancy**, while he was in the Army. He spent time in the Far East. Don's sales responsibilities take him to Massachusetts and Rhode Island. The Fentons spent three weeks in Jamaica, W. I., on a wonderful vacation. The most important member of the family is **Brent Michael Fenton**, 5½.

"**Judy Maden Pickard** and **Bill** have two girls, **Kim** and **Tracy**. Judy has taught school in Keene, N. H. all year.

"**Isabel Elias Robinson** and **Tom** have one boy. They live in Old Town while **Bill** is taking courses at the University of Maine."



AMONG MANY WELCOMED VISITORS to the MCI campus last summer were business man **Nihat Bortuzun** of Istanbul, Turkey and **Mrs. Bortuzun**. From L., **Mrs. Mary Baxter White** of Brunswick, Mr. and Mrs. **Bortuzun**, **Sanger M. Cook '17** of Pittsfield, **Dana W. Sweet**, executive alumna secretary.

1957

Class Agent

GLORIA CREGNOLE SAMWAYS

171 Allen St., Bangor, Maine

New addresses: **Robert A. Morin**, 10 Tarrytown Road, Englishtown, N. J.; **Carmen Meservy Kern**, 30 Frazer Place, Hartford, Conn.; **Charles E. DeWitt**, 11 Western Ave., Waterville, Maine; Mr. and Mrs. **Wayne R. Richards** (Sandra Stanhope '58), 33 Waverly Ave., Pittsfield, Maine; Mr. and Mrs. **Roger Thompson**, RFD #1, Pittsfield, Maine; **Peter S. Matheson**, 110 Irving Drive, Walpole, Mass.; **Elizabeth McLellan Woodworth**, 62 Curtis Ave., Marlboro, Mass.; **Edward W. Hoffman**, 8 Sunset Drive, Atkinson, N. H.; **Flixina Cole Meyer**, 1502 Shore Acres Rd., Rock Falls, Illinois; **L. Daniel Roy**, 7 Poulin St., Winslow, Maine; **Charles R. Lewis**, 10 Abby Lane, Taunton, Mass.; **Charles R. Starkey Jr.**, 91B Corbett St., San Francisco, Calif.; **Patricia Morgan LeBrun**, 94 High St., Rockville, Conn.

**Richard H. Davis** is an instructor in English at the McTernan Day School, Waterbury, Conn. Dick is chairman of the English department and instructs also in European history. He received a master's degree from the University of Maine last summer. McTernan is a private school; Dick should be right at home.

**Elizabeth D. Starkey Khoury** and husband **Nick** have been in Honolulu, Hawaii for more than a year and expect to be in the islands until September 1968. Not bad duty. Nick is a major in the USA Medical Corps. Children are **Tom** 5 and **Amy Rhoades** 2½, creeping, or walking on, 3, by the time this *Alumnus* is published. **Dianne** (or **Elizabeth**) and **Nick** enjoy the tropical life but are looking forward to the day when they can return to New England.

**Anthony J. Koris** married the former **Billie M. Doucette** in 1961 and since has done right well for himself. Three additional members of the family are **John**, **David** and **Dawn**. Tony is a construction engineer for the Oxford Paper Co., Rumford, Maine.

**Martha Pendleton Gray** became the bride of **Lt. Robert H. Mahlman** of Lubec January 14, 1967 at Old Town, Maine. St. John's Episcopal Church, Bangor was scene for the ceremony. Martha is a graduate of the Ethel Walker School, Simsbury, Conn., Colby Jr. College and the University of Maine. Dick received an M.A. degree in Arts at the University of Maine.

**Shellya Wood Spiegel** resides in Burnham, Maine. Husband **Ronald** is principal of the elementary school at Clinton. Children include **Heidi**, **Jon**, **Franz** and **Kristyon**.

Pittsfield's First Baptist Church was the setting of the March 18, 1967 wedding of **Donna Ruth Cook '65** and **Merlon A. Dunton**. Members of the wedding party included **Corris Ann Dunton '60**, **Robert Dundas '59** and **Forest Frost '56**. Donna is employed by the Robert Ellen Shoe Co., Newport; Merlon is self employed.

**Phillips C. Baird** (Toby) and **Maureen** welcomed their first child, a son **Michael Phillips**, January 18, 1967. Young Mike weighed in at a hefty 8 lbs. 9¼ oz., at length 21½ inches. The Bairds' residence: 85 Southworth St., Lakeville, Mass.

1958

New addresses: **Mark E. Munroe**, 18 Macy Terr., Amesbury, Mass.; **Arlene Belanger Hughes**, Box 212, Pittsfield, Maine; **Anthony P. Vicnaire**, 28 Poulin St., Winslow, Maine; **Charles E. Moreshead**, 8 Pinehurst St., Augusta, Maine; **David Woodrow**, 7304 Edsall Ave., Glendale, N. Y.; **Parker L. Smith Jr.**, 2 Glenwood Ave., Augusta, Maine; **William L. Freedman**, 70 Jefferson St., No. Andover, Mass.; **Robert J. Goode**, R1, York, Maine; **Roy A. Pomeroy**, 36 Spring St., Dexter, Maine; **Richard S. Garison**, Box 118, 7500 ABGP, APO N.Y., N. Y. 09218; Mr. and Mrs. **Philip K. Allen** (Donna Sprague '61) 310 6th Ave. So., Shelby, Montana; **Donald R. Murphy**, 37 Marlboro Rd., Augusta, Maine; **Robert M. Quinlan**, 22 Pine Ave., Barrington, R. I.; **Maximilian A. Willie**, 114 Fantasia, San Antonio, Texas; **John M. Johnston Jr.**, 305 Woodford St., Portland, Maine; **Mahlon S. Lander**, Lake Ave., Newport, Maine; **Stephen H. Bartlett**, 1143 Elm St., West Springfield, Mass.; **Bruce B. Ballard**, 122 Windsor Rd., Jupiter, Fla.; **Frederick I. Pinkham**, Washburn Dr., #66, Topeka, Kansas; **Kenneth P. Sameli Jr.**, 84 Concord St., Bristol, Conn.

Announcement was made in October of the engagement of **Patricia Haggerty** to **Richard P. Dobson** of Stafford, Conn. Patricia is attending the University of Connecticut where she is studying for a master's degree in education and is working as an instructor in the English department at Stafford (Conn.) High School. Richard has served in the Army, is chairman of the Stafford Recreation Board and is employed by Pratt and Whitney Aircraft, East Hartford.

**Ronald F. Redman** is director of admission and guidance at the Hopefield School, East Sandwich, Mass.



# MCI Alumni Association Officers 1966-67

## Executive Committee

**President:** WILLIAM S. COFFIN '33, Augusta, Maine  
**Vice President:** NORRIS CIANCHETTE '44, Pittsfield, Maine  
**Secretary:** ELEANOR TOOTHAKER '30, Pittsfield, Maine  
**Treasurer:** ALMA PATTEN '09, Pittsfield, Maine

## Executive Board

E. BURNELL OVERLOCK '24, Past President, Buzzards Bay, Mass.  
 RUTH TRICKEY PARKER '36, Pittsfield, Maine  
 ROBERT E. MAYNARD '39, Pittsfield, Maine  
 HELMI PAAKKI PERRY '44, Pittsfield, Maine  
 JUDI BURKE SIMONTON '56, Camden, Maine  
 MARY HASELTINE WRIGHT '43, Pittsfield, Maine  
 LEWIS R. FITTS '45, Pittsfield, Maine  
 RICHARD F. BERRY '50, Skowhegan, Maine  
 DAVID T. HALL '42, White River Junction, Vermont

## Nominating Committee

JEANETTE WEBB FITTS '46, Pittsfield, Maine  
 GERALD R. FITTS '47, Pittsfield, Maine  
 NEIL G. WRIGHT '48, Pittsfield, Maine

\* \* \* \* \*

ALMA ELLINGWOOD DOW '40, Alumni Office Secretary  
 DANA W. SWEET, Executive Alumni Secretary

**John M. Johnston Jr.** (see address above) is employed as a staff announcer at radio station WPRO, Portland, Maine. Johnny is a member of the Portland JC's, a Master Mason, and Dad to Judith 7, John 3rd 6, and Jolene, nearly 5.

Susan C. Butterworth of Cumberland, Maine became the bride of **Douglas W. McPike** September 17, 1967 at the Canterbury Episcopal Chapel, Orono. Susan is a senior at the University of Maine and a member of the Bangor Symphony Orchestra; Doug, a graduate of Maine, has served two years with the U.S. Army. The McPike address: Stillwater, Maine.

The Calvary Baptist Church, Newport, Maine was the setting for the September 17 wedding of **Thea L. Thompson**, Pittsfield, and Edward R. Chapman of Ripley. Thea has been employed by National Auto Parts, Inc.; Edward, a graduate of Armijo Union High School, Fairfield, Calif. attended Husson College and graduated from Hanson's Barber School. He is self employed.

The Calvary Baptist Church, Newport, was also the scene of the wedding in June 1966 of Barbara Ann Chambers of Newport and **Mahlon S. Lander**, also of Newport. Barbara is employed in the office of the Eastland Woolen Mill, Corinna; Mahlon is an electrician at the Hartland Tanning Co.

**Charles E. Gero**, in April, states that he is still single. He is employed by the Allied Chemical Co., New York City. Charlie's address: 170 Simmons Ave., Cohoes, N. Y.

**John L. Dudley**, a winning football coach at Morse High School, Bath, Maine, has written an article on simplified pass patterns for high school football in an issue of Football Clinic. "Simplified" to the coach, perhaps, but actually quite a technical treatise. The system should give John's opponents fits.

## 1959

New addresses: Plenty of moving around by MCI '59. Here are some changes: **James M. O'Connell**, Rt. #91, Cider Hill, York, Maine; **Dianne Nash**, 55 Shirwood Circle, Manchester, Conn.; **Elliott J. Guptill**, Box 234, Norridgewock, Maine; **Charles E. Hill**, Spurwink Ave., Cape Elizabeth, Maine; **Marilyn Blanchard Peabody**, 1027 Spencerport Rd., Rochester, N. Y.; **Marilyn J. Pinkham**, Box 236, Leavittsburg, Ohio;

**Charles F. Bruce**, 67 Main St., Fort Fairfield, Maine; **Adrienne Cyr Ashbaugh**, 524 Seymour Ave., Lansing, Michigan; **Gerald L. Carey**, 1908 42nd St., Columbus, Ga.; **Ronald R. Pratt**, High St., Farmington, Maine; **Thomas A. Hallee**, 146 Colchester Ave., Burlington, Vt.; **Raymond M. Caldwell**, RFD #4, Gardiner, Maine; **Lee Baptista**, 186 Arnold St., New Bedford, Mass.; **Kenneth C. Lane**, Rt. #1 South, Great Falls, Montana; **Lawrence A. Dysart Jr.**, 70 High St., Newton Upper Falls, Mass.; **Lt. Dennis W. Haggerty Jr.**, Bldg. 925, Apt. 1, GFAB, Rome, New York; **Gary R. Arnold**, 444 Chippendale Rd., Hoffman Estates, Illinois; **Nancy Ross Cameron**, 26 Forest Park, Portland, Maine; **Lt. Martin J. McHale**, 127 Boedwin Rd., Hempstead, N. Y.; **Lemuel L. Brown**, Box 171, Island Falls, Maine; **Peter J. Rogers**, 11 Hudson St., Bangor, Maine.

**Anthony Frederick Jr.**, super-salesman from '59, won a trip to Paris, France during December 1966. Tony is employed by the A. W. Chesterton Co. as an industrial salesman. Tony's address: 171 Loudon Rd., Concord, N. H.

Mr. and Mrs. **Rodney Spaulding (Rachel Fields '60)** welcomed son Brent Edward in February 1966. He joins two daughters in the Spaulding family. Rod has been doing a stretch of service at Kadina AFB, Okinawa.

**James E. McMichael**, a graduate of Bowdoin College in 1963, received a degree from the Boston University School of Law in May 1966. He has been associated with the law offices of attorney **Carl Wright '43** of Skowhegan.

**Jean Inez Fuller '62** became the bride of **Seymour Burch Jr.** December 3, 1966 at Pittsfield. Jean has studied for three years at the Portland School of Fine and Applied Arts and is a graduate of Meyer's School of Fashion Design, New York City. Seymour is a graduate of the University of Maine and is an electrical engineer. They plan to live for the next three years in Honolulu.

**Lt. Gordon (Judd) Evans** was married in January 1966 to the former Nickoline C. Baade of Cape Elizabeth, Maine. Judd is now assigned to Schofield Barrack, Hawaii.

**Donna Marie Richardson** was married in April 1966 to Jerald B. Glenn of Hayward, Calif. Donna is a graduate of the Wilfred

Beauty School, Boston, and has recently been employed in Mesa, Arizona as a medical secretary. Jerald is a graduate of Arizona State College and is teaching in Hayward, California, where they will make their home.

**Barbara Deane Gates** and husband Alan have announced the birth of daughter Lisa Marie. The Gates' address: 55 Sherwood Circle, Manchester, Conn.

## 1960

## Class Agent

MARILYN A. NASH

98 South Greenwood, Pasadena, Calif.

New addresses: **Marilyn Wilbur Race**, 93 Thurlow St., Georgetown, Mass.; **Leroy C. Leighton**, 28 E. Main St., Yarmouth, Maine; **Natalie McGuire Hein**, 6518 Madison, Crown Point, Indiana; **Charlotte Leavitt Woodbury**, RFD #2, Corinna, Maine; **Richard K. White**, 7 Cross St., Pittsfield, Maine; **John R. Baxter**, 8 School St., Pittsfield, Maine; **William R. Whitman**, 47 Union St., Sackville, N. B., Canada; **William G. DeStephano**, 25 Markwood Dr., Barrington, R. I.; **Richard D. Lord**, 1483 Washington St., Bath, Maine; **Albert F. Wescott**, 68 Main St., Norway, Maine; **Linda Ballard Eide**, 4513 No. Larch Lane, Minneapolis, Minn.; **Joel P. Stacey Jr.**, Carmel, Maine; **Sandra Davis Latour**, 9 South Ave., Derry, N. H.

Sarah Louise Bunker of Bangor became the bride of **Frank W. Sprague Jr.** April 1 at St. John's Catholic Church, Bangor. Sarah is a graduate of the University of Maine and is a member of the teaching staff at John Baptist High School; Frank attended Boston University and Husson College and is proprietor of the M & M Coffee Shop at the Bangor Shopping Center. They reside at 212 French St., Bangor.

Class Agent **Marilyn Nash** is still jumping from coast to coast. Marilyn is presently enrolled at Pasadena (Calif.) Jr. College, plans to transfer to a 4-year college in the fall. She puts in spare moments as a switchboard operator at the Pasadena Community Hospital.

Announcement has been made of the engagement of **Sandra J. Homstead** to Thomas T. Cote. Sandra attended Becker Jr. College in Worcester, Mass. and is employed at Bud's Red and White Supermarket, Pittsfield. Tom has served three years in the Army and is employed as an electronics technician at Fairchild Semiconductor, Portland. A June wedding is planned.

**John L. Gould** is employed with Chrysler Credit Corporation in Atlanta, Ga., as a management trainee. John graduated from Arkansas State College in August 1966. His address: 105 Ponce de Leon Ct., Decatur, Ga.

**Carole Huff Goodridge** is working at the Pratt and Whitney Aircraft plant in North Haven, Conn. Carole's address: 367 Flanders Rd., Southington, Conn.

The Stetson (Maine) Union Church was the setting for the June 1966 wedding of **Gloria Jean Hustus** to Albert C. Brown of Corinna. Albert has served for four years in the U.S. Army and has been employed by Ralph Smith of Orrington. The couple is now residing in Marlboro, Mass.

St. Agnes Church, Pittsfield, was the scene of the wedding in November of **Rochelle Anne Feldmann** and Joseph B. Mackey of Vashon, Washington. Rochelle is a graduate of the Boston City Hospital School of Nursing and Pan American Stewardess School, Miami, Florida. She has been employed by Pan American World Airways and also at the Virginia Mason Hospital as an operating room nurse in Seattle, Washington. Joseph graduated from Spring Hill College in Mobile, Alabama and has done graduate work at the University of Washington. He is presently attending the Medical School of the University of Washington.



The First Baptist Church, Pittsfield, was setting for the December 10, 1966 wedding of **Georgie S. Brown '64** to **Ronald L. Farin** of Harmony, **Marlene Hunt '64** of Pittsfield served as maid of honor; bridesmaids were **Carolyn A. Duffill '64** and **Jeanne Welch Tedesco '59**, both of Pittsfield.

Instructor in physical education, assistant coach of football and track coach at the Fairhaven (Mass.) High School is **Michael L. Dodge**. Mike is remembered at MCI as a rough, tough lineman. Mike is married, has daughter Lauri Jane 2½ and son Kevin L. 14 mos. The Dodge address: 19 Greenbriar Ct., Pine Hill Acres, New Bedford, Mass.

**David Wood** is an electronics technician at Microwaves Associates, Burlington, Mass. Dave's address: 272 Merrimack St., Lowell, Mass.

**Avis Ames Paresson** was married in 1961 to Alfred Paresson of South Portland. There are two daughters, Cheryl 3 and Susan 18 months. Avis operates a highly successful beauty shop at her home, RFD #1 in Pittsfield.

#### 1961

New addresses: **David A. Bates**, 16 Lee St., Reading, Mass.; **Gary W. Parsons**, 2057 Central Ave., Alameda, Calif.; **Bernard R. Beaudoin**, Kings Highway, Fortunes Rocks, Maine; **Charles G. Roundy**, 99 Elm St., Newport, Maine; **Clifford E. Leonard**, Mayo Rd., Hampden Highland, Maine; **John L. Welch**, 11B Burnell Drive, Yarmouth, Maine; **Stanley H. White**, Rt. #1, Box 106, Green Point Rd., Brewer, Maine; **Lt. Alan R. Warmington**, 41st Civil Affairs Co., APO San Francisco 96240, Calif.; **Mary Elkins Palmer**, Box 315, Newport, Maine; **Leonard R. Harvie**, 44 N. High St., Bridgton, Maine; **William E. Dolan 3rd**, 239 Margaret St., So. Portland, Maine; **Jeffery M. Leighton**, Box 361, Millinocket, Maine; **Anne S. Dobson**, 130 Main St., Bar Harbor, Maine; **Richard L. Knight**, 7 Pinewood Dr., Cumberland Center, Maine.

Since September 1966 **Marion J. Pattee** has been employed as a secretary to Vice President Humphrey's Aerospace / Military Assistant in Washington, D.C. Marion's new address: 1075 S. Jefferson St., Apt. 702, Arlington, Va.

**Clayton M. Bryant** graduated in 1965 from the University of Maine and was employed for a year by the state of Maryland in its Department of Forestry. Since July 1966 Clayton has been putting in some time for the U. S. Army.

**Dorothy A. Claverie** of North Hampton, N. H. became the bride of **Norman J. Viger** December 17, 1966 at Our Lady of the Miraculous Medal Church, Hampton, N. H. Dorothy is a junior at the University of Maine; Norm is a graduate student and instructor. The Vigers will reside in Old Town.

St. Martin's Episcopal Church, Palmyra, was the scene of the wedding of **Sara Ellen Smith**, Boston, to **Peter W. Bryant** of Needham, Mass. Sara, or Sally to most MCI friends, is the daughter of Mr. and Roderic L. Smith, Pittsfield. Rod is longtime director of athletics at MCI. Sally is a graduate of Vermont College and has received a degree from the Hartford Hospital School of Radiography. She has been employed at the Children's Medical Center, Boston. Peter has served as a lieutenant for two years in the U. S. Army, is a graduate of Norwich University and is employed by the First National Bank, Boston.

**Norma Lee Cote** of Old Town became the bride of **Stanley E. Clark** of Milltown, Maine, at Our Lady of Wisdom Chapel, Orono, June 20, 1966. Norma is a graduate of the University of Maine and a school instructor in Veazie; Stan is a student at the University of Maine.



**Jane Woodcock '62**, a Dean's List student at Bates College, has been studying at the University of Edinburgh, Scotland during the past academic year. Jane is shown here in Pittsfield, with family favorite "Charm."

St. Agnes Catholic Church, Pittsfield, was setting of the wedding of **Jean S. Cregnole** and **William H. Crangle Jr.** of Portland November 12, 1966. Reverend Father Antonio Girardin officiated at the double ring ceremony. Bridesmaids were **Gloria Cregnole Samways '57** of Bangor, and **Linda Cregnole '63** of Cape Elizabeth, sisters of the bride. Jean is a graduate of the Maine Medical Center School of Nursing and has been employed as a staff nurse at the Center; Bill is in the U. S. Navy, serving abroad on the USS Duluth. They plan to reside in San Diego, California.

**Irving H. Brackett Jr.** has been appointed passenger representative for Casco Bay Lines, Portland. Irv is a graduate of Ricker College, Houlton, with a degree in business and economics. He will work in the CBL Passenger Department in the development of nationwide tours, and will also be in charge of group and charter sales for schools, clubs, colleges and private organizations. His address: 6 Summer St., Brunswick, Maine.

**Leah Ann Ashe DeClue** of Salmon, Idaho, became the bride of **Gary W. Parsons**, Pittsfield August 12, 1966 at the Alameda (Calif.) Church of Jesus Christ of Latter Day Saints.

**Colin Quinn** is instructing at Skowhegan High School. He teaches social studies and is basketball coach.

**William E. Reed** married the former **Marilyn McCobb** in 1962. Bill graduated from Husson College in February 1966 and is presently employed as a sales representative for Humble Oil and Refining Co. The Reeds have a daughter, Robin 2½, and are looking forward to another child this summer. Bill's address: Cedar Grove, Maine.

**Sharon Dee Davis** became the bride of **Jeffrey M. Leighton** at the Farmington (Maine) Methodist Church, August 20, 1966. Dee attended schools in Orleans, France and is a graduate of the University of Maine. She is presently instructing in English and French at Schenck High School, East Millinocket. Jeff is also a graduate of the University of Maine, has taught at Winterport High School and is presently instructing in English at Schenck High School.

**Charles G. Roundy** is a junior at Farmington State College. As a sophomore Charles was elected President of the F.S.C. Coordinating Council, the college's student-faculty cooperative government.

#### 1962

New addresses: Dozens and dozens of changes from MCI '62. We can't list them all, but here is a fistfull. Mr. and Mrs. **Aaron R. Picken (Hazel Brooks '65)**, RFD #3, Houlton, Maine; **Jean Mailman Kingston**, Box 25, Warren, Mass.; **Betty Cole Nathaniel**, 17 Lanihaula St., Hilo, Hawaii; **William H. Robinson Jr.**, 2740 37th S.W., Seattle, Washington; **Janet Brooks DeRaps**, Box 5, Greenland, N. H.; **Robert B. Ward**, Old Duke Apts., West Dover, Vermont; Mr. and Mrs. **Douglas Smith (Reta Fields '63)**, 930 Wethersfield Ave., Hartford, Conn.; **Robert H. Bois**, 327 North St., Saco, Maine; **Lillian P. Moore**, 5 Congress St., Worcester, Mass.; **Lt. Thomas A. Barden**, 1639 B. Birch St., Ft. Dix, N. J.; **Ann MacMichael Kimball**, 60 Silver St., Waterville, Maine; **Sonia A. Latimer**, 29 Edgerton, East Hampton, Conn.; **Madelyn A. Kenniston**, 11 Winter St., Waterville, Maine; **Cynthia Stafford Lewis**, 98651 Moanalua Rd., Apt. B, Aiea, Hawaii; **Chester S. Swalm**, 21 Sterling St., Medford, Mass.; **John D. Doty**, 2 Tara Dr., Weymouth, Mass.; **Sandra Smith Bowling**, 140 Minna Lane, Merritt Island, Fla.; **Larry G. Hatch**, 165 So. Main St., Woodstown, N. J.; **Arthur G. Small Jr.**, 3208 Patterson Ave., Richmond, Va.; **David K. Harnum**, 24 Blaine Ave., Augusta, Maine; **Robert L. Kocsmiersky**, 38 Harrison Ave., Dover-Foxcroft, Maine.

**Charles H. Aston 3rd**, 4 Josephine Rd., Medford, Mass., graduated from William Penn College in June 1966. Charles was president of his fraternity, president of the Letter Men's Club. He expects to enter Air Force Officer Training School.

**David E. Dutch** is teaching and coaching in Tampa, Florida. Dave's permanent address: Somersworth Rd., North Berwick, Maine.

Another MCI athlete from '62, **Ronald A. Rogerson**, is undertaking graduate work at Colorado State University. Ron is on the coaching staff and is instructor in physical education. In June 1966 he was married to **Anne Peabody Claverie** or **North Hampton**, N. H. Bridesmaid **Dorothy Claverie** is now Mrs. **Norman J. Viger '61**. (See 1961 Class Notes for details.) Anne is a 1966 graduate from the University of Maine College of Nursing.

**Albert J. Boutin** is presently serving with the U. S. Army in Germany.

**Arnold A. Dunning** and **Linda Hubbard Dunning** are residing in MCI's Alumni Hall. Arnie is instructing in math at MCI.

**Jean Stackhouse Carnes** welcomed daughter **Melissa Page Carnes** August 26, 1966. Melissa's parents (plus Melissa) reside at 69 Northbridge Rd., Mendon, Mass.

**William H. Robinson Jr.** of St. Johnsbury, Vt., earned a bachelor of arts degree from the University of Vermont in June 1966, and also was elected to Phi Beta Kappa, not bad for the former terror of MCI's Alumni Hall. Bill also earned special honors in political science, which is perhaps more understandable. He has entered the University of Chicago Law School.

**Richard P. Boisvert** has served a stint with the U. S. Marines, was married in August 1966 to the former **D. Jeanne Alvey**, and is presently attending Pasadena Junior College, same as **Marilyn Nash '60**. Dick is majoring in botany; MCI instructor **Frank T. Haseline '40**, of the biology faculty will be surprised and pleased.

**Richard M. Perkins** graduated from the University of Maine in June 1966 and was commissioned in the U. S. Marine Corps the same day. He is married to a classmate, **Donna Robertson**, formerly of Rumson, N. J. Dick has completed advanced officer training.



**Robert R. Higgins** is employed by the Forest City Motor Co., Portland, Maine. Bob served four years with the Air Force, and while in England married Sheila Pindle of Norwich, England. The Higgins' have one son, Carl 1½. Bob's address: 39 West Elm St., Yarmouth, Maine.

**Andrea Cate Fowler** became the bride of John P. Elderkin June 9, 1966 at St. Martin's Episcopal Church, Palmyra. **Rex M. Fowler** '66 served as best man. Andrea attended Farmington State College and the University of Maine; John served with the Para-Medics of the U.S. Army and was a student at San Antonio College, Texas.

**Preston L. Carter**, a graduate of Middlebury College, in August 1966 was married to the former Elizabeth Jean-Marie Holmes of Rochester, N. Y., also a Middlebury graduate. Both are enrolled in the University of Vermont College of Medicine. Plenty of MCI at the wedding: **Mike Savage** was best man, **Laurie Holden** an usher, **Maryjane Christie Stafford** '65 served as a bridesmaid.

St. Agnes Catholic Church, Pittsfield, was scene of the August 27, 1966 wedding of **Carol Lee Rodgers** and **Max H. Good** '61 of Gardiner. **Patricia Rodgers** '63, sister of the bride, served as maid of honor. Carol is a graduate of Colby College; Max is studying at Eastern Kentucky University, Richmond, Kentucky.

**Thomas Wright** of Pittsfield was awarded the Distinguished Service Award by the local Jaycees at a banquet in January. Tom, owner and operator of Shur-Way Food Store, Hartland, is also associated with Wright's Food Center, Pittsfield. Tom has been chairman of the local Junior Miss Pageant for the past two years and has been active with local youth groups. For the past four summers he has coached Little League Baseball and is secretary of the Pittsfield Jaycees.

St. John the Baptist Church, Haverhill, Mass., was setting for the February 3 wedding of Ann Louise Ryan of Haverhill and **Ernest W. Stein Jr.** of Pittsfield. **Valerie Stein**, MCI '67, served as a bridesmaid; **Roderic S. Cross** of Skowhegan was best man. Ann is a graduate of the Lawrence General Hospital School of Nursing and has been employed at the Hale Hospital in Haverhill. Ernest has served for four years in the Air Force and is a student at Valparaiso University in Indiana.

The Holy Trinity Chapel at the Naval Air Station, Pensacola, Florida was scene of the wedding of Sarah E. Umphrey of Washburn, Maine to Ensign **Clinton J. Farmer** of Woodland. Sarah is a former student at Abbott Academy, Andover, Mass. and was graduated from the Hannah More Academy, Reisterstown, Md. Clint is a 1966 graduate of the U.S. Naval Academy at Annapolis, Md.

**Madelyn A. Kenniston** graduated from Aroostook State College June, 1966 with a B.S. degree in education. Madelyn was prominent in student activities during her college career. She is teaching in the Waterville school system.

Announcement has been made of the engagement of Sheila Ann Collar of Oakland, Maine to **Robert Bruce Jones** of Waterville. Sheila is a senior at Williams High School; Bruce is a graduate of the Maine Maritime Academy and is employed by the Gulf Oil Corporation as an engineer.

**Ann S. MacMichael** became the bride of Robert A. Kimball of Saco May 8, 1966 at the Chapel Sanctuary, Cherryfield, Maine. Ann is a graduate of Colby College; Robert is a senior at Colby.

Lt. **Garry Owen** reports that three MCI products have recently made it through Norwich University; **Bob Murphy** '61, **Dick Temple** '61, and Garry himself! Garry apparently did very well; in his senior year

found himself on the Dean's List and during the second semester on the President's List. Garry is serving with the 7th U. S. Cavalry.

**Marvin H. Glazier** graduated from the University of Maine in June 1966 and is presently attending the Boston University School of Law. Marv's home address: 51 Poplar St., Bangor, Maine.

#### 1963

New addresses: **Linda J. Cregnoles**, 44 Ocean View Rd., Cape Elizabeth, Maine; **Paul R. Duchane**, 1040 Washington St., Gloucester, Mass.; **Frank R. LaCivita**, 60 Union St., Norwood, Mass.; **Viola Clukey Miller**, 202 Buist Ave., North Charlestown, South Carolina; **David S. Skillings**, 4401 Central Ave., Apt. 21, Fremont, Calif.; **Cindy L. Chamberlain**, 1325 LaSalle Ave., Apt. 306, Minneapolis, Minn.; **Peter A. Lerette**, 41 Maple St., Gardiner, Maine; **Michael N. Folsom**, West Elm St., Hampden, Maine; **Charles E. Shinn Jr.**, 140 St. Lawrence, Eastlake, Ohio; **Joseph S. Gaudette Jr.**, RFD #1, Rollinsford, N. H.; **John C. Walker**, Hillsboro, N. H.; **Sandra Bennett Moores**, So. Royalton, Vermont; **Wayne E. Pinkham**, 504 E. Michigan, Jackson, Michigan; **John A. Woodruff**, 129 Summitt St., E. Providence, R. I.

The First Universalist Church, Pittsfield, was the August 16 setting for the wedding of **Susanna M. Huff** to **L. David Mercier** '58 of Pittsfield. **Jean Ann Bagley** '63 served as bridesmaid. Sue attended Farmington State College and is employed as a teller at the First National Bank of Pittsfield. Dave has served with the U.S. Air Force and operates the Embers Restaurant in Pittsfield.

**J. Thomas Remy** will graduate this spring from Sir George Williams University, Montreal, Canada with A.B. degree. Tom's home address: Box 44, Springvale, Maine.

Announcement was made in January of the engagement of Nancy Lee Barton of Winchendon, Mass. to **Adra W. S. Lovley Jr.** Adra is a student at Bangor Theological Seminary and pastor of Guilford Community Church, Guilford, Maine. A July wedding is planned.

**Jean Ann Bagley** was graduated from the Salem Hospital School of Nursing September 8, 1966. Jean Ann is a member of the nursing staff at Salem Hospital.

**Linda Jean Wright** was married New Year's Day 1967 to Frederick T. Leighton of Auburn at the First Congregational Church, Pittsfield. Linda has been employed by Grace Horse Supply, Pittsfield; Fred is employed by the Lewiston Welding Co.

**Erick S. Johanson**, Pittsfield, a senior at Virginia Polytechnic Institute, has been named to Who's Who in American Colleges and Universities. Erick has been named a Distinguished Military Student, among many other honors earned at V.P.I.

A ceremony at the Catholic Church, Pittsfield, united in marriage **Dianne Lynne Curtis** '65 and **Frank Roy**, both of Pittsfield. Dianne has been employed by the Edwards Co., Pittsfield; Frank is serving with the United States Navy Seabees in Vietnam.

Another member of Who's Who in American Colleges and Universities is **Judith E. Knox** of Pittsfield, a senior at Eastern Nazarene College, Quincy, Mass. Judy has been cited by her college for excellence in leadership, scholarship and character in various leadership posts. She plans a career in journalism and teaching.

**Janet M. Cooley**, a senior at Eastern Nazarene College, was presented the first affirmative speaker award at the Greater Boston Forensic Association college debate tournament in November 1966. Janet plans a teaching career.

Announcement was made in January of the engagement of Wanda Wheeler of Hart-

land to **Richard Lary** of Pittsfield. Richard is employed by the Northeast Shoe Co. Pittsfield; Wanda, a graduate of Hartland Academy is employed in the office of the same company. No date has been set for the wedding.

Announcement has been made of the engagement of Louise L. Copeland to Lt. **Steven A. Cox** of Bangor. Louise is a graduate of Mr. Bernard's School of Hair Fashions; Steve has graduated from the Officer's Candidate School, Ft. Benning, Ga. A summer wedding is planned.

**Celia Ann Chase** became the bride of Michael Thurston of Winslow, Maine at a ceremony at the Burnham Baptist Church May 28, 1966. **Charlene Chase** '65 served as maid of honor. Both Celia and Michael are employed by the Scott Paper Co., Waterville.

The Calvary Baptist Church, Pittsfield, was the scene of the May 7, 1966 wedding of Barbara L. Brawn of Newport and **Royce W. McLaggen**. Ushers included **Paul Ray** '62 and **James Basford** '63. Barbara is employed by the Northeast Shoe Co., Pittsfield; Royce is employed by Dexter Shoe Co.

**Cheryl A. Hutchinson** of South Portland became the bride of **Frederick A. Wagnis** in August 1966 at Woodfords Congregational Church, Portland. Cheryl is a graduate of Northeastern Business College and is employed by Retail Credit Co. Fred also graduated from Northeastern Business College and is employed by the Southworth Machine Co.

Sacred Heart Church, Waterville, was the setting for the January 1967 wedding of **Constance A. Condon** of Pittsfield to Lionel R. Beard Jr. of Waterville. Connie graduated from the Golden School of Beauty Culture and has been employed by Northeast Shoe Co., Pittsfield. Lionel has served with the U.S. Army and is employed by Waterville Fruit and Produce Co.

**John M. Worley** has been particularly active in Viet Nam, the hard way. It is hoped by publication time of the **Alumnus** that John will be back home at wonderfully named Scraggy Neck, Cataumet, Mass.

Announcement was made in February 1967 of the engagement of **Janet M. Viger** of Pittsfield to Thomas G. Bryant of Rockland. Janet is a senior at the University of Maine, majoring in math; Tom is a graduate student at Maine. A June wedding has been planned.

**Anne M. Witham** of Newport became the bride of Lt. James D. Jenkins of Needham, Mass. February 25, 1967. The ceremony was performed at People's Methodist Church, Newport. **Pamela E. Witham** '65 served as maid of honor; Susan Witham, a sophomore at MCI, was a member of the bridal party. Anne is a graduate of the University of Maine; James is a graduate of Maine and is presently serving with the 101st Airborne Division at Ft. Campbell, Ky.

**Patricia Rodgers** will have a busy summer. Pat will graduate from the University of Maine, be married to Michael Skaling, a graduate student at the U. of Mass., and travel in Europe during the summer. Pat, this spring, did a hard apprenticeship as a practice teacher in the tough English department at MCI.

**Nick Carparelli** and **Bill Fiske** '65, both Maine lads, played major roles in leading Southern Connecticut State College through its first winning season in seven seasons. Both are health and physical education majors.

**George M. Glaser** is a June 1967 graduate from the University of Maine. George has accepted a position with Pratt & Whitney, Hartford, Conn. in the field of computer science.

**Norman Tardiff** has been appointed head coach of football and baseball at Bangor's



John Bapst High School. Norm has been outstanding in these sports at the University of Maine.

#### 1964

New addresses: **Carl G. Curtis**, 7 South St., Pittsfield, Maine; **Todd B. Stafford**, 8919 Wadsworth Rd., S.W., Tacoma, Washington; **John L. Baste** 3rd, Box 184, Braintree Branch, Boston, Mass.; **David H. Marsh**, 423 9th Ave. No., St. Petersburg, Fla.; **Malaka Russell Diver**, 118 S. 3rd St., Apt. 3, Islamorada, Fla.; **Joan Vanderveer Gould**, 211 High Street, Portland, Maine; **Linda M. Eastman**, Haskell House, 220 Fisher Ave., Boston, Mass.; **Patricia L. Elkins**, 698 Congress St., Portland, Maine; **William D. Scott**, 20 Camelot Way, So. Weymouth, Mass.

**Howard P. Price** is a junior at the University of Tampa and evidently doing very well as a biology major.

**Richard A. Hartford** has completed his junior year at the University of Maine. Dick goes home each weekend to work at the Lewiston Gas Light Co. under the supervision of **William Hendricks Jr.**, MCI '47.

**Larry M. Cross** was one of four recipients of a Louis Calder Foundation Scholarship at the University of Maine. The scholarships are awarded to students interested in pulp and paper programs.

**Glenda L. McMann** became the bride of Hiram B. Weymouth of St. Albans October 28, 1966 at the Universalist Church, Pittsfield. Glenda is a payroll clerk at Northeast Shoe Co.; Hiram is a member of the U. S. Air Force and has recently returned from a tour in Thailand.

**Ralph M. Hammond** has graduated from Dean Jr. College and is presently attending State College at Framingham, Mass. Ralph was married in September 1966 to the former Mary B. Webber of Bedford, Mass. Ralph's address: 286 David Road, Bedford, Mass.

**Richard P. Howe** joined the Air Force in April 1966 and now finds himself on Milan, an island off the coast of Spain, as an electrical power production specialist.

**Susan K. Smith** became the bride of Ralph E. McMann September 16, 1966 at the parsonage of the Universalist Church, Pittsfield. **Eva Allen Charity** '56 of Plymouth, Maine served in the bridal party. Susan is employed at the First National Bank of Pittsfield; Ralph is employed at Northeast Shoe Co.

The First Baptist Church, Pittsfield, was the setting for the wedding of **Una M. Inman** of Pittsfield to A. Frederic Cheney of Portland. Una is a student at the University of Maine; Fred will graduate from Maine in 1967.

**Edith Malaka Russell** of Pittsfield became the bride of Theodore E. Diver of Islamorada, Fla. June 25, 1966 at the First Baptist Church, Pittsfield. **Patricia D. Russell** '65 served as maid of honor to her sister. The couple resides in Florida.

Jane E. Cook of Palmyra became the bride of **Michael N. Dyer** January 1, 1967 at the First Baptist Church, Newport. **Dale A. Belanger** '66 served as best man. Jane has been employed by Beverly's Hair Fashions, Newport; Mike is currently employed by the U. S. Air Force.

Announcement has been made of the engagement of Donna Vanadestine of Hartland to **Robert Mercier**, Pittsfield. Bob is currently with the U. S. Coast Guard, stationed in Puerto Rico.

**Allen Gould** is employed by the Maine Forest Service and has been working out of Old Town, Maine. Last summer, purely in the line of duty, Al visited the remote forest camp of alumni secretary Dana Sweet. It is reported that a good time was had by all. No arrests, no riots.

Sergeant **Warren E. (Pat) Dow** received commendations for initiative during a fire crisis at Ft. Hood, Texas, where he is presently stationed.

A blaze broke out in one of the tanks engaged in a night firing exercise and Pat, in command of searchlight-equip tank, with his light, led vehicles into position to support fire fighting efforts. Pat's battalion commander wrote: "... Yours was an act of inspiring leadership in a moment of crisis ..." and the battalion commander of the distressed tank added, in part, "This action was accomplished on your own initiative, without orders from any of our responsible personnel. This prompt action expedited the evacuation of the crew and was of great assistance in the first critical moments of the fire." Pat is son of Byron and **Alma Ellingwood Dow** '40, of Pittsfield.

Announcement was made in April of the engagement of **Dianne J. Wilbur** '65 to **Douglas H. Whitney**. Dianne attended Farmington State College and is presently employed by the Edwards Co., Pittsfield. Doug attended the East Aero Tech School in Lexington, Mass. and is presently serving in the U. S. Navy. No date was set for the wedding.

#### 1965

New addresses: **Frank D. Bower**, 1042 Springhouse Rd., Allentown, Pa.; **David M. Pressey**, 80 Pine St., Orono, Maine; **May C. Lewis**, 87 Spring St., Portland, Maine; **Dale E. Turner**, 47 Concord Rd., Billerica, Mass.; **Robert W. Perry**, 97 Textile St., Lowell, Mass.; **Nancy A. Bennett**, 300 So. Rexford Dr., Beverly Hills, Calif.; **Gale H. Pomeroy**, 546 Cumberland Ave., Portland, Maine; **Tania J. Winsor**, 51 Park St., Portland, Maine; **Shirley Ouellette Adams**, RFD #2, Pittsfield, Maine; **Robert E. Lamontagne**, 3 Ash St., Skowhegan, Maine; **John S. Williams**, 1 Davis St., Pittsfield, Maine; **Gary P. Stevens**, 606 North 7th St., Canton, Missouri.

Last report from **Joe Cobisi** was from 31,000 feet up, en transit from Hawaii to Thailand, via the Philippines. Yes, Joe is in the Air Force.

Announcement has been made of the engagement of **Linda L. Debay** to Joseph H. Dionne, of Pittsfield. Linda attended Eastern Nazarene College and is presently employed at Northeast Shoe Co. Joe is employed by the Susi Construction Co., Pittsfield. A June wedding is planned.

**Sherwood Brooks**, **Garath Buker** and **Harlan Tilton** enlisted as a group under the "Buddy Plan" of the U. S. Army which insures remaining in the same outfit during basic training. Sherwood and Harlan are in Viet Nam; Garath was held back from this interesting assignment because of a bout with pneumonia.

**Peter Susi** was named to the Dean's List at Amherst College. Pete as a freshman was a member of the basketball and crew teams and was winner of the Hamilton Prize for the highest ranking student in the introductory economics course.

Sandra Jean Kelley of Skowhegan became the bride of **Sterling N. Nickless** June 25, 1966 at the Hinckley Chapel, Hinckley, Maine. **Mahlon Nickless** '52 served as best man; **Charles Dickinson** served as an usher. Sandra is a graduate of the Sister's Hospital of Medical Technology, Waterville and is employed by the Seabastcook Valley Hospital, Pittsfield; Sterling is a graduate of Beal's Business College, Bangor, and is employed by Dunnett's Incorporated, Bangor.

**Rebecca Jean (Becky) Rines** has graduated from Leon Amandola's School of Advanced Hairdressing, New York City, and has been employed by Coiffures by Vicki, Bangor, Maine. Becky has earned herself a reputation as a talented worker with tresses; this is not lightly said, and is from impeccable sources.

**Jacqueline Lewis**, one of '65s rare P.G. girls, has completed her courses at Mt. Ida

Jr. College, Newton, Mass. and has transferred to the Andover Institute of Business in an IBM Systems course. Jackie's home address: Box 327, Falmouth, Mass.

**Craig W. Miller** is attending Butler University in Indiana and has been president of his pledge class of the Phi Delta Theta fraternity. Craig has a new address: 7 Oxford Rd., North Caldwell, N. J.

Sacred Heart Church, Waterville was setting of the March 4, 1967 wedding of Muriel L. Douin and **William Wood**. Muriel is employed by the C. F. Hathaway Co., Waterville; Bill is employed by J. E. McCormick and Son. They reside on RFD #1, Fairfield.

**Lee Anna Clukey Rowley** is busy at home in Detroit, Maine with a fairly new son. Lee Anna says she doesn't work but youngster probably says different.

**Jeffory J. Clough**, a student of Nasson College when he is there, has been this winter batting around Europe on some vague kind of overseas study program. Jeff's last address was elaborate hotel in Vienna, where he has, hopefully, been studying.

**Maryjane Christie** of Newport became the bride of **Bruce A. Stafford** of Pittsfield December 31, 1966 at the Methodist Parsonage, Newport. The couple was attended by **Nancy A. Christie** '67 sister of the bride and by **Craig A. Cookson** '65. Maryjane and Bruce are both students at the University of Maine. Bruce has been earning himself a tremendous reputation in football and baseball at Maine.

#### 1966

New addresses: Well, just about everyone from bouncing '66 has moved to one place or another. It's obviously impossible to list all changes, but requests to the Alumni Office for addresses of friends and classmates will bring prompt, efficient and extremely courteous service.

The People's Methodist Church, Newport, was setting for the November 1966 wedding of **Linda Jean Davis** of Detroit and Donald E. Harris of Corinna. Linda is employed at the Northeast Shoe Co., Pittsfield; Don is employed at Banton Bros., Newport.

Announcement has been made of the engagement of **Beatrice E. Springer** to Elmer H. Littlefield of Hartland. Bea has attended the D'Lor Beauty School, Bangor; Elmer has been attending the Northern Maine Vocational Institute at Presque Isle.

**Judith Hobbs** received her nurse's cap at a ceremony in February. She is studying at the Beverly (Mass.) School of Nursing.

Announcement was made in March of the engagement of **Sally S. Doody** to **Robert J. Duplisea** '62, both of Pittsfield. Sally is employed by the Church Goods Mfg. Co., Pittsfield; Bob is employed by Nortronics Plant, Norwood, Mass.

**Nancy Foster** became the bride of Wendall Patterson November 9, 1966 in the Congregational Church at Bennington, N. H. Wendall is serving in the Air Force; the couple will reside in Anchorage, Alaska.

**Carole C. Curtis** became the bride of Richard A. Webber Jr. of Hartland at Pittsfield's First Universalist Church August 26, 1966. Carole has been employed by the Edwards Co., Pittsfield; Richard is employed at the Hartland Tannery.

Announcement was made in January of the engagement of **Christine M. Small** of Burnham to Milton L. Small of Unity. Christine is employed by the Northeast Shoe Co., Pittsfield; Milton is serving with the U. S. Marines. No date was set for the wedding.

Announcement has been made of the engagement of **Sharon Mitchell** of Pittsfield to Newton C. T. Crawford of Dover-Foxcroft. Both Sharon and Newton have been employed at the Dexter Shoe Co.



**Jonathan Hinckley** was elected president of the Freshman Class at Springfield College and was a member of the freshman swimming team.

**Carol Butler** of Pittsfield became the bride of David Robinson of Palmyra at the First Universalist Church, Pittsfield, March 4, 1967. Carol is employed at the First National Bank of Pittsfield; David is employed at the Canaan Equipment Garage.

Announcement was made in March of the engagement of Carolyn A. Crummett to **Roger L. Hatch** of Jefferson. Carolyn is employed at Morin's Pharmacy, Gardiner; Roger is employed by S. A. Messina Lumber Co., Wiscasset.

The Grace Linn Memorial Methodist Church, Hartland, was scene of the wedding of **Pamely Willey** and Kenneth D. Weeks in September 1966. **Curtis Kurt '59** served as best man. Kenneth is employed by the Edwards Co., Pittsfield.

**Glenis B. Cookson** became the bride of Alfred G. Varney of Detroit, Maine at the Burnham Baptist Church July 2, 1966. Alfred is employed by the Edwards Co., Pittsfield.

## NECROLOGY

**1898 Allison P. Howes**, a prominent and lifelong resident of Palmyra, Maine, died July 13, 1966 following a brief illness. He was born in 1881, the son of Alvin and Susie Dudley Howes. He had served both as representative and senator for the State of Maine, served as State Grange Lecturer for 10 years, and was a member of the Grange for over 60 years in both Palmyra and St. Albans. He had the distinction of being chairman of the centennial and sesqui-centennial celebrations of the town of Palmyra and was a member of the Methodist Church in Hartland. He had served his town for many years as selectman, member of the school board and 28 years as town treasurer.

**1902** Word has been received that **Orel M. Bean** of Woburn, Mass. died in February of 1964. A longtime principal of the Woburn High School, in June 1963 he was guest of honor at a Woburn civic appreciation banquet for outstanding services to his community.

**1903 Hugh F. Goodwin**, of North Berwick, Maine and St. Petersburg, Florida, died in September 1966. He is survived by a brother, John E. Goodwin, MCI '15, of Augusta, Maine. We regret that there are no further details.

**1904** Word has been received of the death of the Reverend **William Sweetland** in May 1966 at his home in Ledyard, Conn. He will be greatly missed in his community.

**1907** Word has been received of the death of **Ross P. Chamberlain** on May 17, 1966 at New Port Richey, Florida. We regret that there is no further information.

**1908 Merton C. Larrabee**, a Pittsfield resident for many years, died September 4, 1966, unexpectedly, near his home. He was born in Knox, Maine in 1888, the son of Captain and Ellar Clark Larrabee. Following his MCI graduation he attended Colby College. He was employed as a master carpenter for many years, and retired seven years ago. Active in the Democratic Party, he was a member of the 500 Club, and had served as a Pittsfield selectman for several terms. He was a veteran of World War I and a past commander of the Pittsfield Post, American Legion, a member of the

Barracks, Veterans of World War I. In July he was elected president of the Three Quarter Century Club of Maine. There are no immediate survivors.

**1910 Asa Russell Mace** died June 29, 1966 at his Aurora, Maine home, following a long illness. Born at Aurora, he was a selectman of the town for 48 years and was engaged in the blueberry, lumber and general store businesses. He was a chairman of the board of directors of the Union Trust Co. of Ellsworth and a former legislator for Hancock County. He was a member of the Lygonia Masonic Lodge, Acadia Chapter and Blanquefort Commandery of Ellsworth and the Anah Temple Shrine of Bangor. He is survived by his widow, Gladys Mace of Aurora, four sons, four daughters, 29 grandchildren, two sisters and a brother.

**Clayton V. Chandler** of Watertown, Mass. died December 16, 1966. A Pittsfield native, following his graduation from MCI he graduated from Doe's Business College, Bangor and La Salle Extension University, Chicago. He was associated with H. J. Heinz Co. of Cambridge, Mass. for many years. Following his retirement he became connected with the Brown and Holdridge Accounting Firm, Boston. He had served for many years as a tenor soloist in churches in Maine and in Boston. He leaves a wife, Rena Jones Chandler, MCI '11, and a brother, Raymond of Portland, Maine.

**1911 Goldie Willis Loud** of Worcester, Mass., wife of Irving B. Loud, MCI '10, died December 1, 1966. Born in Harmony, Maine, she had lived in Worcester for 49 years. She was a member and former deaconess of the First Baptist Church, a member of the Hearstone Circle, Calling Committee, and Martha Circle of the church. Following her MCI graduation she taught school in Solon and Island Falls until her marriage in 1917. Besides her husband, she leaves a daughter, Ella G. of Charlotte, N. C.; a sister, Ruby P. Willis, MCI '13, of Worcester, and two grandchildren.

**1912 Hollis A. Bowden** of Sullivan, Maine died July 27, 1966. We regret that there is no additional information.

**1915 Rita Pushor Palumbo** of Lebanon, N.H. died February 14, 1967 at a Lebanon hospital. She was born in Pittsfield and had been a resident of of Lebanon for 46 years, following her marriage to her late husband, Herbert, who died 10 years ago. She is survived by two daughters, Mrs. Bertron Hunt of Coventry, Conn., and Miss Dorothy Palumbo of Lebanon.

**1915 Roy B. Watson** of Saco died unexpectedly at his home February 6, 1967. He was born in Ludlow, Maine and attended Ludlow and Patten schools. Following his graduation from MCI, he moved to Dexter, later moving to Saco 30 years ago. He was employed as a set-up man at the Saco-Lowell Shops for more than 20 years. He was a deacon of the United Baptist Church of Saco and a member of the Katahdin Lodge of Masons. Survivors are his wife, Mrs. Myrtle Watson of Saco, one son, three daughters and 11 grandchildren.

**1916** Word was received late last spring of the death of **George R. Whitten**, following a brief illness. He had been associated with the Balsams Hotel, Dixfield Notch, N. H. for many years. He and his wife, Cora, had four children; three boys, one girl. We regret there is no additional information.

**Susan Damon Harris** of Bangor died February 14, 1967. Born in Stetson, Maine, she attended Stetson schools. Following her graduation from MCI, she taught schools for five years in Stetson, Glenburn and Hudson. She is survived by her husband, Carroll, of Bangor; two sons, one daughter, three grandchildren.

**Raymond I. Wright** of Pittsfield died unexpectedly while hunting October 29, 1966 at Ripley, Maine. He was born in Troy, Maine and had been a resident of Pittsfield for 50 years. He served as a mechanic in the local woolen mill for many years. Upon retirement he devoted much time to his hobbies—fishing, hunting and antiques. He was a past Master of the Meridian Lodge AF and AM, and a member of the Pittsfield Fire Department. He is survived by his widow, Florence; a daughter, Mrs. Marjory Lessard of Skowhegan, one grandchild and two great-grandchildren.

**Marion Morse Bartlett** of Damariscotta Mills, died at her home September 14, 1967. She was a native of Palmyra. After her graduation from MCI she graduated from Shaw's Business College, Bangor. She taught for two years, then did secretarial work in Augusta until 1921, when she married J. Lawrence Bartlett of Damariscotta Mills. She is survived by her husband, two sons, a daughter; a sister, Ruth Morse Webber, MCI '15 and 6 grandchildren.

**1917 Roger S. McGown** of Hermon died unexpectedly at his home December 3, 1966. He had been a lifelong resident of Carmel, moving to Hermon three years ago. He was associated with his father and brother for many years in the grocery business at Carmel. During that time he served as postmaster for 20 years and was town treasurer of Carmel for 25 years. In later years he had been associated with the Arthur Chapin Co., Bangor. He was a 40-year member of the Benevolent Lodge AF & AM, and Lakeside Lodge, IOOF, of Etna for 43 years. He is survived by his wife, Annie Mabel Patten McGown, three daughters and 9 grandchildren.

**Dr. Wallace S. Houston** of Milo, Maine, who had been a practicing dentist in that town for 40 years, died April 26, 1966. Following MCI he attended Bowdoin College and was a cum laude graduate of Tufts Dental School. He was a member of Piscataquis Lodge of Masons; Anah Temple Shrine, Bangor; the American Legion and was a past president of the Eastern Maine Dental Society. Survivors are his widow, Esther Mace Houston, MCI '19, two daughters, two sons, a sister and 11 grandchildren.

**1919 Ruth Whitten Palmer** of Waterville, Class Agent to MCI 1919 for several years, died unexpectedly at her home August 6, 1966. She was born in Pittsfield, but had been a resident of Waterville for the past 22 years. She was a member of First Church of Christ Scientist, a member of the Waterville Women's Club and of the educational department of that club, a member of the Waterville Glass Club and of the Friends of Music. She was finance chairman of the Maine Federation of Music Clubs. She was a loyal supporter of MCI in a number of ways. She is survived by her husband, C. Alton Palmer of Waterville, one son, two daughters, and five grandchildren.



- 1920 Arline Russell Stitham** of Pittsfield died at a Waterville hospital May 8, 1966 after a long illness. She was born in Costigan, Maine, but had been a Pittsfield resident for most of her life. She was a graduate of Emerson College and the Catherine Gibbs School, Boston. She was a member of the First Universalist Church and Bethlehem Chapter O.E.S. of Pittsfield. Survivors include her husband, Lloyd H. Stitham, MCI '23, of Pittsfield; a son, Lloyd H. Jr., MCI '63; two brothers, Linwood, MCI '18, Cumberland Center, and Norris, Augusta; a sister Miss Esther Bussell, MCI '25, of Lyndon Center, Vt., and two nephews.
- 1925 Marion Mitchell Murch** of Dover-Foxcroft died May 27, 1966, following a brief illness. She was born in Troy, Maine and had been a resident of Dover-Foxcroft for a number of years. She is survived by her husband Donald, MCI '26, a brother, Maurice Morgan '34 and two sons.
- 1928 Albert E. McMichael** of Pittsfield, a well-known insurance agent in the area for nearly 30 years, died at a local hospital January 25, 1967, following a long illness. He was a graduate of the University of Maine, where he was president of the Phi Eta Kappa fraternity his senior year. He was later employed by the U. S. Department of Agriculture, returning to Pittsfield in 1938 to start the A. E. McMichael Insurance Agency, which he operated until his death. He was a charter member of the Pittsfield Kiwanis Club, a member of Meridian Lodge, AF & AM, a past patron of Bethlehem Chapter O.E.S., a veteran of WW II and a member of the Pittsfield Legion and

VFW Posts. Survivors include a step-daughter, Patricia Wright Elias, MCI '61; a twin brother, Alfred, MCI '28, of Somerville, Mass.; as sister, Miriam Robinson, MCI '25, of Newton, Mass.; three nephews, a niece and an uncle.

- 1931** Word has been received of the death of **Harry S. Skillings** in October of 1963, following a long illness. He was a resident of Steep Falls, Maine. For many years a successful lumber buyer, in 1959 he decided to leave business, enter college, and train for elementary school teaching. He graduated from Gorham State College in 1963 while seriously ill. He was a leader in 4-H work, a deacon of the Baptist Church, the Sunday School Superintendent, and a participant in community projects. Survivors include his widow, Olive Murch Skillings, MCI '29 and two daughters.
- Marjorie S. Farnham**, born in Shirley, Maine, died August 17, 1966. She had for many years been a resident of Guilford, Maine. We regret there is no further information.
- 1935** Mail to **Leland M. Johnston**, Waldoboro, Maine, was returned in June 1966 marked "deceased." A native of Washington, Maine, he had been a lobster dealer in Waldoboro for many years. We regret that there are no further details.
- 1942** Word has been received of the death of **Hans Muir** in Chicago in June 1966. He was born in Cardendon, Scotland and was a resident of Ridlonville, Maine at the time of his MCI graduation. We regret that there are no further details.
- 1944 Louise White Neal**, formerly of Pittsfield, died at Arlington, Va., follow-

ing a long illness, in March 1967. She was a graduate of the Augusta General Hospital Nursing School. She had lived in Arlington for 12 years. She is survived by her husband, Richard, formerly of Auburn, a son, a daughter, a brother and a sister.

- 1948 Ralph C. Ham** of Brewer died unexpectedly at the home of his mother in South Berwick, Maine November 16, 1966. He was a member of the 100th Maine Legislature. He was a graduate of the University of Maine, a member of the Brewer Kiwanis, and was a past commander of the Brewer American Legion Post. He served as a lieutenant in the U.S. Army in Korea and Japan. Survivors include his mother, his widow, Mrs. Charlotte Ham of West Paris; a son, three daughters and a brother.
- 1957 Staff Sgt. Paul R. West** was among 25 Air Force men who died in the crash of an air transport November 26, 1966 near Saigon Airport in South Viet Nam. He entered the Air Force as a career man nine years ago and had re-enlisted for further service only a few days before his death. He is survived by his widow, Diane, of Auburn, Maine; two daughters and a son, his mother of Lewiston and a sister.
- 1966 Dale A. Cowan** of Pittsfield died September 17, 1966 as the result of a boating accident at Gray Pond, Plymouth, Maine. Cowan was alone, officials said, trying out a boat with a new motor. The overturned boat was later found. He was the son of Mr. and Mrs. Norman Cowan, Pittsfield. He had been employed at the Northeast Shoe Co. in Pittsfield.

## The "Governor Powers of Maine"

Albert L. Partridge of Watertown, Mass., MCI '04, historian and Alaska buff, has discovered a stereopticon view of a never-ending line of miners and packers struggling up the Golden Stair Trail of Chilkoot Trail during the great Alaskan gold rush of 1898. He noted that, surprisingly, one man was packing what appears to be half of a rugged canoe. If it is indeed a half, the other half would also be on the trail and, presumably, arrangements had been made to joint the two ends at a pre-arranged rendezvous.

Through his jewelers glass Mr. Partridge then determined that the prow of the odd craft is lettered "Governor Powers of Maine." Llewellyn Powers, for whom MCI's Powers Hall is named, was governor of Maine from 1897-1901, which covers the date of the picture.

Canoe manufacturers in Maine and Canada have been unable to shed light as to what person from Maine (again,



Old Stereopticon View

presumably) might have undertaken the certainly miserable trip up the notorious Chilkoot—lugging a sawed-off canoe!

Intriguing questions: Who was the goldrusher who knew that Llewellyn

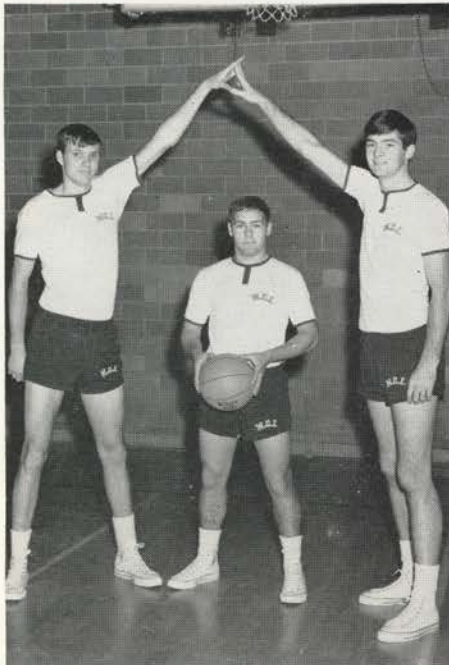
Powers was governor of Maine in 1898? Who remembers or has heard of the story of the heartbreaking undertaking involved in the packing of a canoe—in two sections—over the Golden Stair to remote Lake Bennett?



# LACROSSE ESTABLISHED AT MCI



LACROSSE, a game abandoned by thoughtful Indians as being too rough, was introduced at MCI in the spring of 1967. Thirty-five candidates responded to the call from coaches Rod Smith and Peter Gulick and, surprisingly, most of them stuck it out. The boys took one game—from North Yarmouth Academy—in an eight-game schedule in the established Maine Prep School Lacrosse League. Coach Gulick, at least, was quick to point out that it was a constantly improving outfit: they dropped their first game to Kents Hill 0-13, the second contest with the same club was lost by a relatively modest 2-5 tally. Well, that's one way of looking at it, coach.



Mike Angelica is not really this short; it's just that Dick Prone and Jim Boissoneau are rather tall. The three were important members of the winning basketball Preppers.



PORTLAND ARTIST LENNY HATCH '58, a graduate of the Portland School of Fine and Applied Arts, conducted an exhibition of his paintings at the Powell Memorial Library in October. Lenny here discusses "The Villa" with Mr. and Mrs. Chester C. Lynn of Pittsfield. It is a fact that he is considered one of Maine's most promising younger artists—a statement not lightly made. A number of his pieces at the MCI showing were "on loan"; several more were purchased during the 2½ hour public presentation.



# DEVELOPMENT CREDIT CORPORATION OF MAINE

Post Office Box 2227

15 GROVE STREET, AUGUSTA, MAINE 04330

April 20, 1967

Dear Fellow Alumni,

In the first hundred years of its existence MCI has made great strides forward. The founding fathers possessed imagination, initiative and energy to undertake the establishment of the school. It took courage, money and hard work to accomplish the task. However, they did not stop at that point. They went further by endowing the succeeding generations not only with the physical assets of buildings and equipment but also the characteristics which enabled them to begin the undertaking.

The growth of the physical plant, particularly in the last twenty-five years, has been very satisfying and the Staff and the Board of Trustees are to be commended for their efforts. They are also to be commended for the assembling of a faculty which maintains high teaching standards and keeps MCI among the top ranking preparatory schools of New England.

At the start of the second century of its existence, MCI is in a fine position. Its able and dedicated headmaster, staff and faculty are prepared to continue the work of educating our young people. Many changes of our times face them, and it is obvious that they are thinking ahead to meet the challenge.

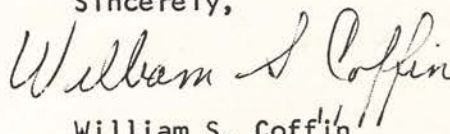
The formation of school administrative districts throughout the State with the program of developing area high schools is bound to have its effect upon MCI. Although it is expected that MCI will continue to have day students, they may not be as numerous as in the past. However, with the expansion of its dormitory space, more resident students can be cared for, and assisted by its substantial endowment the future looks good indeed.

Bright though the future may be, MCI will still need its loyal and dedicated alumni. They are the best advertising agency it can have, and will be the source of many referrals of future students. A strong alumni association, filled with pride in the accomplishments of MCI scholastically, musically, theatrically and athletically, can be one of its biggest assets by giving it wholehearted support with interest, effort and finances.

Your contributions to the Alumni Association are most welcome and your active support is appreciated by the Association and the School. Those members who have not contributed still have ample opportunity to do so, and with your help we can be of more benefit to MCI.

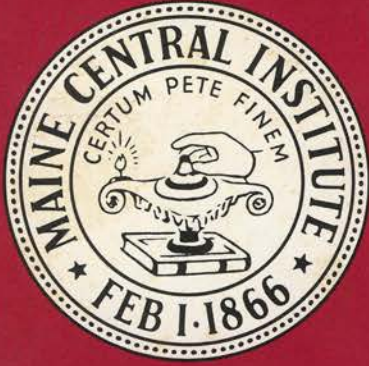
Remember Homecoming Day. Plan to attend and meet your classmates and friends.

Sincerely,



William S. Coffin  
President, MCI Alumni Association





*Seventeenth  
Annual*

# **MID-SUMMER REUNION**

**HONORING 7's AND 2's**

**SATURDAY, AUGUST 5, 1967**