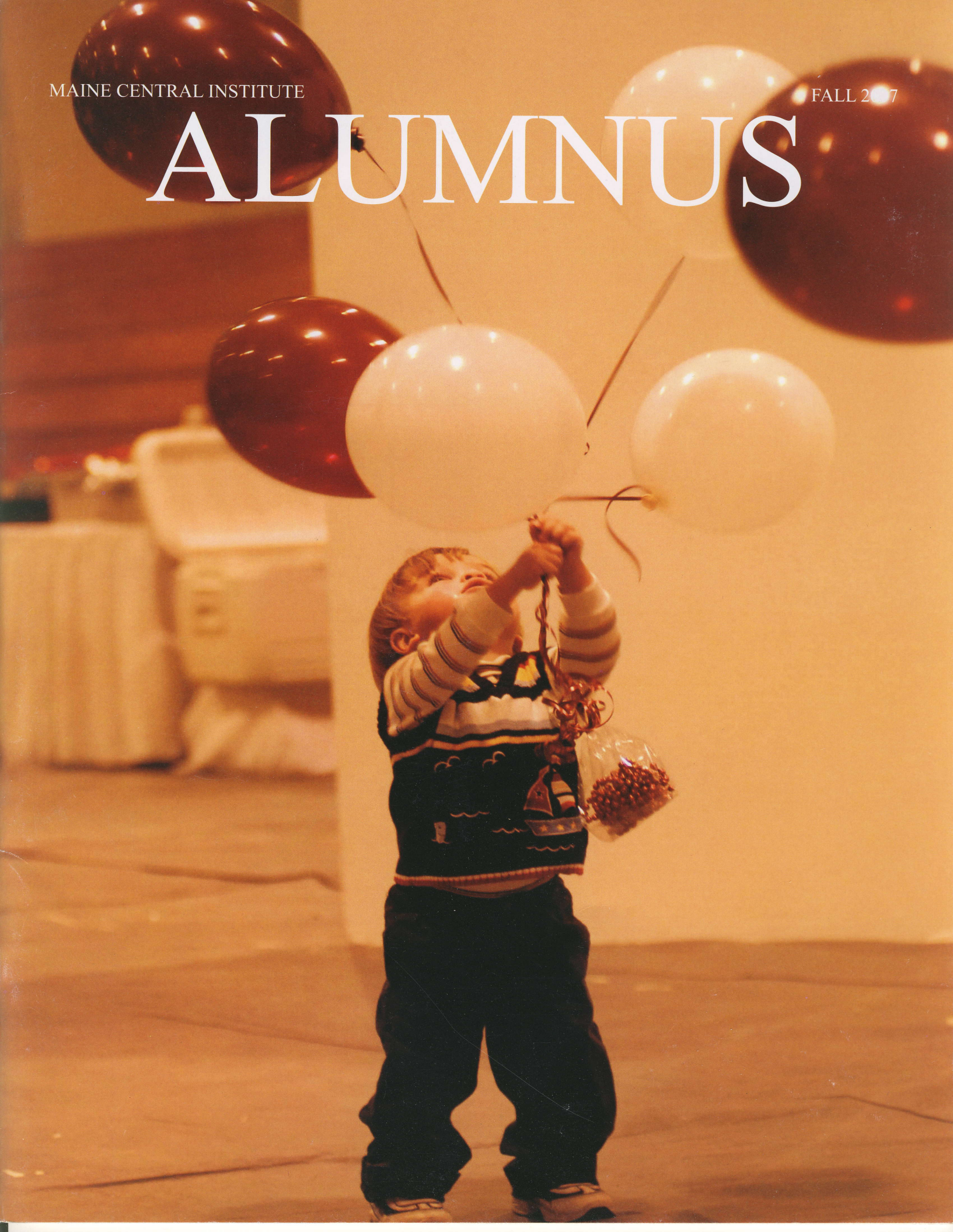


MAINE CENTRAL INSTITUTE

FALL 2007

ALUMNUS



MCI

On The Move



Alumni and staff have been busy this past year getting together to reminisce about yesterday and share stories of today's MCI. Receptions were held in cities across the country, including two in Portland and one in Boston, Massachusetts, and personal visits have been made in numerous cities.

About 25 MCI alums gathered for their annual reunion at the Holiday Inn in Portland. Many of the attendees were from the Class of 1948, who gather in Portland every year to re-connect.

Another reception was held at The Woodlands in Portland back in May, hosted by MCI Board of Trustees President Scott Carter '73, Ross Furman '63 and John LeMieux '78. About 50 Portland-area alums attended that event.

Another MCI reception for around 20 people was held in April in Boston, Mass., hosted by Mike '62 and Cilla Savage.

Additional visits have taken place with Nicholas Craig '38, in Savannah, GA; Ben Miner '50 in West Columbia, SC; Jeffery Hazell '79 in Orlando, FL; Frank '55 and Anne '55 Bowen in Pensacola, FL; Linda Shorey '69 in Harrisburg, PA; Jonathan Volpi '02 in Philadelphia, PA; Larry Heim '67 in York, PA; Jim '65 and Paige Talbott in Bala-Cynwyd, PA; Jean Maynard '41 in Bangor; David Fernald '58 in Portland; Catherine Doyle Mooers '53 in Augusta; Jerome Hallee '50 in Arlington, MA; Gregg '69 and Elaine Patterson in Los Angeles, CA; Laura Norris '92 in Pasadena, CA; and Edson Buker '52 in Torrance, CA.



(Above) (back, left) MCI Dean For Institutional Advancement Todd Nadeau visited with John Gould '60, (front, left) Jeff '69 and Johnna Furbush '71 Farkas in Atlanta, Georgia with MCI Alumni Affairs Director Jennifer Voter Beane '97 (front, right); Nadeau visited with Theo Walker '26 this spring on the event of her 100th birthday; Frank & Anne Bowen '55 welcomed Nadeau and Beane to their Florida home; MCI Alumni at the Boston reception included (back, left) MCI Director of Admission Clint Williams '86, Ed Ryman, Sarah Reeves, Jerome Hallee '50, MCI Trustee Bob Menucci '64, Todd Nadeau, MCI Trustee Mike Savage '62, Norm MacLeod '48, (middle, left) Irene Furbush Dudley '44, Susan Ryman '69, MCI Trustee Anthony Frederick '59, (front, left) MCI Trustee Carolyn Smith, Cilla Savage, Marilyn Frederick, MCI Head of School Joanne Szadkowski.



(Above) Alumni gathered at Verrillo's in Portland; a group of alumni from classes in the 1940's held their annual luncheon this summer at the home of Theo '48 & Shirley Bryant in Dexter.

ON THE COVER: Andrew Paul Burke Jr., grandson of Russ Furman '63, enjoys the ribbon cutting festivities for the Donna Leavitt Furman '41 Student Center.

MAINE CENTRAL INSTITUTE

295 MAIN STREET
PITTSFIELD, ME 04967
www.mci-school.org
(207)487-3355

Board of Trustees 2007-2008

Scott Carter '73, President
Jack May, Vice President
Michael Savage '62, Treasurer
N. Blake Bartlett
William Ball '63
Paul Bertrand '59
Brenda Breton
Sally Smith Bryant '61
Tania Carnrick '73
James Christie '85
Anthony Frederick '59
Robert Hayes
Tania Winsor Hannon '65
Dean Homstead '69
Gary Liimatainen '78
Rick McCarthy
Robert Menucci '64
Betty Lou Mitchell
Gregg Newhouse '81
Gregg Patterson '69
Ginger Russell
Carolyn Smith
Josh Tardy
Linda Sweet Thornton '71
Norbert Young, Jr. '66

Alumni Association

Executive Committee 2007-2008

Ralph Damren '64, President
Clint Williams '86, Vice President
Alice Shaw Patterson '48, Treasurer
Bette Bagley '54
Thomas "Skip" Chappelle '58
Paul Bertrand '59
Thomas Quint '73
Ralph "Buddy" Ingraham '75
Karen Reynolds McGrady '75
Craig Littlefield '77
Nancy Bertrand Shorey '82
Michelle Vigue Hodgins '91
Alycia Kerr Allen '97
Milton Webber '71
Jennifer Voter Beane '97, MCI Director of Alumni Affairs, ex officio

Editors: Kathy Dion
Todd Nadeau
Associate Editors: Sharon Savasuk
Jennifer Voter Beane '97
Printing: Franklin Printing
Wayland Magoon '65

The Alumnus is published twice yearly for alumni/ae, parents and friends of Maine Central Institute. Please send address corrections, new phone numbers or updated e-mail addresses to the Office of Institutional Advancement.

Phone: 207-487-5915; fax: 207-487-3512;
e-mail: alumni@mci-school.org

Message From The Head of School



This year has been full of even more excitement than most, as we have been busy with numerous new initiatives, projects, programs, and facility upgrades. We have created a new website, finished the honor's dormitory, added advanced placement classes, upgraded student and faculty technology, enhanced our dress code, and watched the creation of the fabulous Donna Leavitt Furman '41 Student Center! The campus has also been busy with the summer ballet and ESL programs. Alumni Weekend hosted well over 200 people with a wonderful luncheon on the front campus and a variety of activities and class reunions.

I am pleased to announce several other areas of progress for MCI. From an enrollment and financial picture, MCI is in the best position it has been in for many years. Residential halls are at capacity, faculty retention is over 90% and residential student retention is 87%. Our endowment has increased 45% in the last three years. Standardized test scores, due at least in part to our actions over the last academic year, have significantly increased. Exceptional scores in AB Calculus have qualified us for the Siemens Award for excellence in Advanced Placement. Last year's senior class had a 10% overall increase in the number of students receiving at least one acceptance to a two or four year college (total rate now over 80%). Our new dress code reflects our shift in culture and attitude toward more academic rigor. The choice to expand the dining facilities was well timed given the increase in residential students, plus it showcases the school in a more positive light and provides benefits for all. The capital campaign, "Ensuring MCI's Future," is drawing to a close, and we look to our loyal alumni to help us finish our 2.5 million campaign on a strong note!

In closing, I appreciate having played a role in the advancement of the school and its strategic plan. I am most proud of the progress we have made and feel the school is on solid ground for my successor. Most importantly, I know that these milestones would not have been attained were it not for the consistent and dedicated efforts of many people loyal to MCI. Students have played a major role; both in helping us create our dreams for the future, and in helping attain those dreams. They are, and will continue to be, a driving force in the future of this institution. I extend to them a personal thank you for the fun I have had sharing in their MCI experience. I will have many good memories of student activities, traditions, and special shared events. I would also like to acknowledge and thank those members of the administration, faculty, staff, trustees and community who partnered with me on issues large and small. You have, and will continue, to do great things for MCI. My best wishes for the continued success and future of Maine Central Institute.

Sincerely,

Joanne Szadkowski
Head of School

MCI SELECTS NEW HEAD OF SCHOOL



Christopher J. Hopkins has been appointed MCI's new Head of School

Maine Central Institute has appointed Christopher J. Hopkins, currently Assistant Headmaster for Student Life at The Hill School in Pottstown, PA, as its next Head of School. Hopkins will assume his duties at MCI on July 1, 2008 succeeding present Head of School Joanne Szadowski, who announced her resignation in July.

"I am honored and very excited to be joining the MCI community," said Hopkins. "I look forward to leading the school community to the next level of excellence."

In choosing Hopkins after a nation-wide search, the MCI Search Committee selected a person who best exemplified the qualities the school was seeking in the next Head of School, said Michael Hodgins '86, former President of the MCI Board of Trustees. "We looked for someone who embodied the qualities of the school and who is a superb communicator, a unifier of all constituencies, an academic leader, and an experienced educator and administrator who understands the developmental stages of children. Chris Hopkins is a

'people person' who is accessible and approachable, and a leader who will attract and hire talented faculty and staff. Chris will be committed to reaching out to the community beyond MCI," Hodgins said.

Hopkins received his B.A. degree in English from Middlebury College in 1987 and his M.A. in English from Middlebury in 1992. He has spent the past 20 years in education, as both a teacher and an administrator. He has served as Dean of Students, Dean of the School and Faculty and Interim Development Director at The Marvelwood School in Kent, CT, then as Dean of Students, Assistant Headmaster for Residential Life, and now Assistant Headmaster for Student Life at The Hill School.

Though Hopkins has moved through the ranks of education from teaching to administration, he has never lost his connection with the classroom and students. He began his career teaching English at the Canterbury

School in New Milford, CT then at Leeds Grammar School in Leeds, UK, and continues to teach English and coach lacrosse at The Hill School. He has also coached football, hockey, cricket and rugby.

"MCI is in an ideal location," said Hopkins. "In a fast-paced, technology-driven world, MCI has the luxury of preparing students for success in college and beyond – the global community – while still allowing them to enjoy their youth in a natural setting. The school offers them the opportunity to try new things within a structured, supportive community, so that they may develop the knowledge, interests, and moral and ethical foundation that will serve them in the future. I am delighted that I'll be a part of the MCI family and I look forward to serving it's mission with dedication and hard work."

In making the announcement about the appointment to the MCI community, Hodgins explained five important principles on which Hopkins believes a school community should be founded. The first principal states that a school must teach and espouse the importance of leadership; second, a school must anticipate well what is to come; third, a great school maintains and celebrates tradition; fourth, a school must allow young people to enjoy the innocence and freedom of youth and espouse healthy risk-taking; finally, a great school must pursue excellence.

Hopkins will make several visits to the MCI campus over the coming months before officially assuming his duties as Head of School this summer. He and his wife, Suzanne, and their daughters Maggie and Lillian, will reside in the Manson House, residence of the Head of School, in Pittsfield.



(From left) Lillian, Suzanne, Christopher and Maggie Hopkins.

MCI BOARD UNDER NEW LEADERSHIP

Mike Hodgins '86 ends his term as President,
Scott Carter '73 takes over

Mike Hodgins '86 ended his term as President of the Maine Central Institute Board of Trustees in June after six years in the role. Scott Carter '73 was named to take over leading the Board.

Hodgins actually served on the MCI Board for a total of nine years. He was Vice President from 2000-2001, and President from 2001-2007. After serving so many years, Hodgins looked back recently and said he can't take credit for much. "I was part of a team effort that helped move the school forward," he said. MCI extends its gratitude for his tireless work and loyalty.

Carter has served on the MCI Board for more than nine years, and has been Chairman of the Buildings & Grounds

Committee for four. He is looking forward to some hard work as President of the Board in the coming months, and hopes to put MCI in a good position.

"I would like to see the school position itself to be the best high school in Central Maine, with an emphasis on the Arts," Carter said. "Most importantly, I want the level of academics to be superior and to attract more private day students. With the consolidation process evolving we have an opportunity to make MCI stand out and be a magnet for students who want a superior education and the foundation to prepare them for post secondary education."

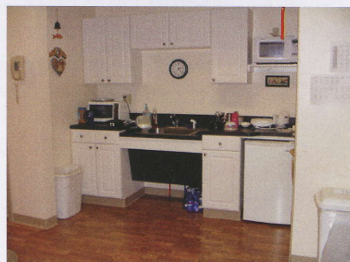
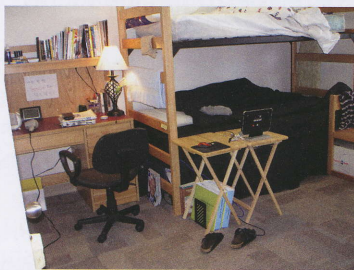


Scott Carter '73

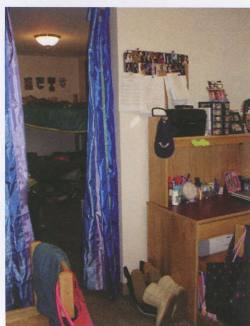


Mike Hodgins '86

MCI OPENS FIRST HONORS DORM



The first Honors Dormitory has opened at MCI, located in the Hurd House on Main Street. Residential students interested in living in the Honors Dorm must fill out an application and write an essay, and they are chosen based on their application, dorm citizenship and grades. The Hurd House has been renovated to make room for eight male students and four female students who are housed on separate floors of the building. The dorm also includes a common kitchen area, common living room and laundry area, as well as an outdoor deck. Roberta McGuire is the dorm director of Hurd House.



From The Alumni Director's Desk

It's good to be back at MCI! The campus is as beautiful as ever (with a few more buildings), the faculty and staff are enthusiastic, and the students are doing some pretty amazing things. Best of all, I get to support wonderful alumni/ae!

Now that I have settled into the office a bit, I have been trying to get out on the road to meet with more alumni/ae and will hopefully be coming to an area near you soon. Please check the back cover of this magazine for upcoming alumni/ae events and always remember to check our website—<http://mci-school.org>—for the most up-to-date information and pictures. We also offer the Pawprint, a monthly email newsletter with information about what is happening at MCI. If you would like to subscribe to the Pawprint, just go to <http://mci-school.org/contact.cfm> and send us your name, email, and class year with a message saying you would like the Pawprint.

I've been working with the Alumni/ae Association Executive Committee members who have been hard at work with Reunion, the Golf Open and Homecoming. They are also busy gathering recipes for an MCI cookbook that will be on sale in 2008 (see the details at right).

Finally, I want to thank everyone who donated to MCI's 2006-07 Annual Fund. As you may or may not know, the Annual Fund is used to help pay for things like student activities, upgrading technology, purchasing textbooks, and the ongoing maintenance and restoration of MCI's classrooms and buildings. MCI wouldn't be the extraordinary place that it is without your support.

Please always feel free to contact me (207 487 5915 ext. 139; jbeane@mci-school.org) or stop by the Alumni/ae Office with any questions. I hope to see you soon.

Best wishes,

Jennifer Voter Beane

Jennifer Voter Beane '97
Director of Alumni/ae Affairs

CALLING ALL CHEFS!

The MCI Alumni Association is busy working on a cookbook fundraiser to include recipes from MCI alumni, staff and friends.

If you're famous for your spaghetti sauce, or want to share the recipe for granny's ginger snaps, send us the recipe to include in the cookbook! You can use the tear-out recipe card included in this

issue of the *Alumnus* or you can e-mail it to us.

For more information, call Alumni Director Jennifer Voter Beane '97 at (207)487-5915, ext. 139, or e-mail her at: jbeane@mci-school.org.

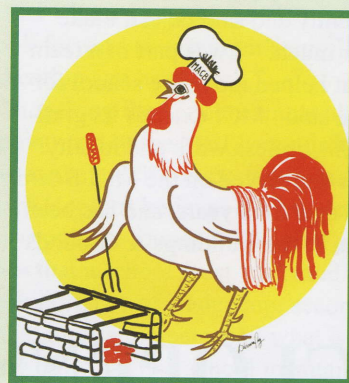
Below is a sample of what you'll find in the cookbook - enjoy!

Karen Reynolds McGrady '75's French Chicken Stew with Pesto *serves 6-8*

hands-on time - 20 minutes

total time - about 1 hour

2 cups onion, diced
4 cloves garlic, crushed
¼ cup olive oil
2 28 oz cans of diced tomatoes
1T each fresh or 1 tsp dried:
basil, tarragon, thyme, rosemary
2 cups chicken broth
2 cups dry white wine
2 cups water
1 ½ lbs small new potatoes in skins
4 cups cooked chicken, diced or shredded
1 cup chopped black olives (opt)
1 cup prepared pesto (recipe follows)



Saute onion and garlic in olive oil until onion is transparent. Add tomatoes (with juice), herbs, broth, wine, water and ½ of pesto. Simmer 30 minutes. Add potatoes and cook 15 minutes, until just about done. Add chicken and olives and heat through. Serve with remaining pesto and crusty French bread.

This is one of those great recipes you can tinker with - add some sliced zucchini or summer squash and mushrooms in place of, or in addition to the chicken (add at same time as potatoes); add chunks of grilled Italian sausage; substitute cooked pasta or cannellini beans for the potatoes (stir in at same time as chicken), etc. Easy and yummy. If you have any leftovers, the flavor is even better the next day.

Pesto

2 cups fresh basil or 2 T dried basil
½ cup olive oil
2 T pine nuts, toasted (you can use walnuts; be sure to toast)
1 tsp salt
½ cup freshly grated parmesan cheese
3 T butter

Combine all ingredients in a food processor or blender and process until smooth.

Leftover pesto keeps for a week or so in the fridge, or freeze in ice cube trays to use later on; 1 cube equals about 2 T.

ROARING IN THE '20'S

MCI Celebrates 2007 Auction

MCI was transported back to the 1920's for an evening with our 2007 Annual Dinner Auction in May.

Nearly 200 people turned out for the annual dinner auction event, most dressed in costumes depicting the fun and fashion of the 1920's. A 1920 Ford Model T automobile was lent to MCI for the evening by Helen Esty Cianchette '48, which helped set the mood for

the evening. Theo "Teddy" Walker '26 was the Honorary Chair of the event, and she delivered a pre-recorded welcome to attendees.

Nearly \$18,000 was raised in this year's Auction, with proceeds earmarked to benefit MCI's music and athletics programs. The athletics department purchased a football hitting sled, a portable scoreboard, warm up outfits and team uniforms. The music department used Auction money to purchase digital pianos for the piano classrooms, sound reinforcement equipment, an upright bass guitar, as well as taking a band trip to New York in April.

Auction 2008 will be held on Saturday, May 3, and committees are already meeting to get things going. If you'd like to become a member of the decorating, meal and/or the items committees, contact Alumni Director Jennifer Voter Beane '97 at: (207)487-5915, ext. 139, or e-mail her at: jbeane@mci-school.org.



Crystal and Fred Olsen



MCI Head of School Joanne Szadkowski and Linda Cregnoles '63.



Helen Esty Cianchette '48, Joyce Beattie Williams '48, Sarah Chipman '53, Marilyn Lloyd, Lancy Bradshaw, Rosalie Williams, Alice Fitts '47, Linda Cregnoles '63.

Our sincere thanks for the generosity of our corporate sponsors...

A.E. Robinson Mobil Mart, AG Edwards, Al Corey Music Center, Alfred Bachrach, Esq., Bangor Daily News, Bangor Savings Bank, Paul Bernier, Bert's Driving School, Gertie Bizeau, Bossov Ballet Theater, Bud's Shop 'n Save, Cam Neely Foundation, Scott Carter '73, Champions Sports Club, Classic Structures by Jasmin & Co., Clinton Golf Course, Cornerstone Farm, Country View Golf Club, Annette Cross, Doug & Lori Cummings, Cyr Northstar Tours, Day's Jewelry Store, Christine Dopson, Bob & Cindy Downs, Dubois, Inc., Einstein Electric, Thomas Fallon, Donn Fendler '44, Fisherman's Wharf Inn, Kelli Frost '77, Frost's Mobil Service, Garden Island Cleaners, Generations The Salon, Gepetto's Restaurant, Gordon Construction, Heidi Ann's Flower Shop, Holiday Inn, Houston Brooks Auctioneers, Huff Forest Products, Irving Tanning, JW Parks Golf Course, Jazz, Kelly-Smith Printing, Sharon Kimball, Kleinschmidt Associates, Kyle Ladd, L-Espalier, Robyn LeGrand, Lewiston Maineiacs Hockey Club, Loretta's, Mad Hatter Fine Foods, Maplecroft Farm, Mardens, Margit's Studio, Julie McCarthy, Frank McGrady, McMann's Service Center, Merrill Merchants Bank, Miller Signs & Graphics, MCI/SAD 53/Northern Kingdom Music, Todd Nadeau, National Hockey League Players Assoc., New Hampshire Fisher Cats, Northeast Athletics, Inc., North Country Rivers, Karen O'Connell, Ocean Point Inn, Alice Patterson '48, Penobscot Theater, Phoenix Computers, Pine Tree Basketball Clinic, Portland Regency Hotel, Portland Sea Dogs, Susan Quinn, Dr. Flint Reid, Richie's Pizza, Steve Ruell, Saddleback Maine, Paula Salley, SAS Pittsfield, Inc., Mike '62 & Cilla Savage, Seabaticook Valley Federal Credit Union, Cecelia Shatney '49, Skowhegan Savings Bank, Carolyn Smith, Staples Oil Company, Stewart's Gym, Sugarloaf/USA, Joanne Szadkowski, TD Banknorth, The Theater at Monmouth, TJ's Jewelry, Julie Treadwell, Turner Sporting Goods, Vic Firth, Inc., Walpole Manufacturing, Waterville Opera House, Mary Webber, Milton Webber, Jennifer & Steve Whitesel, Mike Wiers, Esq., Wilderness Expeditions, Inc., Ted Williams

Cash Donations: CM Almy, Sarah Chipman, Meridian Masonic Lodge of Pittsfield, Burky & McCarthy Law Office.

Gift-in-Kind: Franklin Printing (Wayland Magoon '65), Day's Jewelry, Wallace Tent.



Alice Patterson '48 proudly poses in the Alice Shaw Patterson '48 Student Lounge in the Donna Leavitt Furman '41 Student Center.

FAMILY TIES:

ALICE SHAW PATTERSON '48

Alice Shaw Patterson graduated from Maine Central Institute in 1948, but she's never really left the school. Over the years, Alice has given her time and talents and has become a major part of life behind the scenes at her alma mater.

Alice was born and raised in Pittsfield. Her father, Guy F. Shaw, graduated from MCI in 1918, and all of her seven siblings are MCI alums as well. She sent her three sons to MCI, making the Shaw/Patterson thread a major part of the fabric of MCI.

"We had a good time at MCI," Alice recalled. "We were active in everything from the school newspaper to the Glee Club and the Trumpet Band." She said she liked to smile and have fun along with her classmates, many of whom she still sees to today at a monthly lunch. "There was no art program and only four buildings back then, but we thought it was just super," said Alice.

Alice met her husband, Edward, at an MCI dance and they married two years later in 1949. They had three children, Patrick '68, Gregory '69 and Eddy '74, who passed away some years ago.

"I don't know why I've stayed connected with MCI, but it's always been a big part of my life," said Alice. "I get a satisfaction in helping others, so I've always helped out

when anyone has asked." She started out helping put out the *Alumnus* many years ago, and has since become part of the Executive Committee of the MCI Alumni Association. She can be found helping out at Reunion, the Alumni Golf Open, and other MCI alumni events, but Alice's natural desire to help has extended beyond MCI over the years - she's worked in human services, taught nutrition, headed up a local Meals on Wheels program, worked as an activity director for a nursing home, and was a founder of the Pittsfield Christmas Project.

Alice said that she and Edward were parents that only wanted the best for their children, and they taught their sons from an early age the importance of integrity and hard work. Her example to her sons helped them to become successful in their own lives, and with a major gift to the recent Ensuring MCI's Future capital campaign, Gregg Patterson named the Student Lounge in the new Donna Leavitt Furman '41 Student Center after his mother.

"The gift my wife Elaine and I have given to the Capital Campaign was given in celebration of my mother, whose 'life values', preached to me since birth, pounded into my brain, became the foundation of my success and the very core of my

being," said Gregg Patterson. "She went back to school, changed jobs to get ahead, she was and is a real 'bulldog' when she puts her mind to something. She worked her 50 hours each week, took care of our home, cooked dinner, disciplined us when needed, prodded us to do better, refused to accept second best."

"I came from a family that worked hard, and we had a great childhood," recalled Alice. "There were no computers, no televisions, and we used to slide down hills in the winter snow on cardboard. But we had fun." She can recall her childhood and MCI memories as if they happened yesterday, and they still bring a smile to her face.

Alice's example has been an inspiration to her friends and family. "I was always telling Gregg about the things I was doing for MCI and it ignited something in him and his brother," said Alice. Both of her sons have been loyal supporters of MCI for years. "MCI gave me a good education, integrity, and confidence in myself to do whatever life gave me," she said.

"MCI has always been a beautiful campus, even when I was there," said Alice. "I'm so proud to show it to people. I'm proud that as a family we can give back."

LOVE ON THE COURTS

FRANK & ANNE BOWEN '55:

Frank Bowen '55 was spending the summer of 1954 working maintenance on the campus of Maine Central Institute. On a clear, bright day that summer, he spied a beautiful young girl playing tennis. He spent a couple of days just watching, then worked up the nerve to go talk to young Anne McCready '55, who had moved to Pittsfield that summer. "I met him and I was sunk," said Anne of the man she would marry in 1956 and with whom she has spent the past 49 years.

Frank and Anne Bowen have lived and worked all over the world, but tiny Pittsfield, Maine still holds a pretty big place in their hearts. "We've been reasonably successful in life," said Frank, "and we attribute much of our success to MCI and the education we received there."

After graduating from MCI, Frank joined the Marine Corps. When he came back home in the winter of 1956, he married Anne and they moved to California. With his experience as a radar technician in the Marines, Frank was able to secure a position as an electrical technician with Bendix Corporation in 1959, a career that has taken the Bowens to Bermuda to Africa to Maryland.

When Bendix received the contract from NASA to build the worldwide tracking network, Frank was assigned to Bermuda. Though this first assignment was for six months, the Bowens ended up staying in Bermuda for 19 years. As the United States progressed from the Mercury Program to the Gemini Program to the Apollo Lunar flights to the Skylab space station and the Space Shuttle, Frank was promoted to Operations Manager at the Bermuda Manned Spaceflight Tracking Station. In 1979, the Bowens left Bermuda for Guam, where Frank had been named the Senior Manager at the tracking station there for 18 months. He and Anne came back to the United States when they arrived in Maryland

in 1980, as NASA was preparing to launch its first space shuttle flight.

Frank was asked to lead a team installing a voice station at Gaborone, Republic of Botswana, South Africa next. He had three months to get the station operational, and after a number of problems and setbacks, he did just that. He was asked to lead a similar project in Senegal, West Africa, after that. Because of his work on those two projects, Frank was presented with Bendix's Outstanding Performance Award, and the astronauts' silver "Snoopy" award, given to those individuals who have made extraordinary contributions to flight safety or mission success.

Throughout all of this, Anne was home raising two daughters. She continued her education by taking courses through the University of Maryland Extension while they lived in Bermuda, and the whole Bowen family took up scuba diving, something they enjoyed as a family for many years.

Frank retired from Bendix a few years ago, but he hasn't stopped working. "I played golf and took up fishing," said Frank, "but I think I work a lot better than I fish or golf." He's been working for a Florida Ford dealership delivering fleet vehicles all over the state. "I think he was born with wheels on," remarked Anne.

For her part, Anne keeps busy these days tutoring adults in English two

days each week through the Learn To Read program in Florida, and she's active in their church's outreach program.

Both Anne and Frank say they will always remember Frances Piper's English class at MCI. "I think that was the most beneficial class to me," said Frank. "I really learned how to speak and write, skills that were the most beneficial to me later in life."

Though MCI had only four buildings when Frank and Anne were students, they both remember it as an excellent school. "The school has changed quite a bit over the years, but the quality of education hasn't," said Frank. "I became a manager of the filling station where I worked in high school before I ever went to college," he said. "I have to attribute a good part of that to MCI and to a work ethic both Anne and I got from our parents."

MCI is proud and thankful for the Bowens' unwavering support of their alma mater.



Reunion 2007

Great Memories, Great Friends, Great Times!



Alumni from around the country returned to the MCI campus on Saturday, August 4, to celebrate Reunion 2007.

The event began with registration and a continental breakfast in Parks Gymnasium, followed by the Reunion Luncheon under the celebration tent.

Everyone enjoyed the luncheon, raffle and the famous Roll Call, led by Ralph Damren '64. Plans are underway for next year's event in August.

The Hall of Fame ceremony is set for Friday, August 1, Reunion on Saturday, August 2, and a special Donors Breakfast on Sunday, August 3. Watch for details!



in 2007



ends



Great Times



MCI ALUM INJURED IN IRAQ ON THE MEND



Brad Buckland '03 was wounded recently while serving in the U.S. Army in Iraq.

A bullet shattered Buckland's hip bone and he was in an induced coma for a short period of time. He recuperated for several weeks at Walter Reed Army Medical Hospital in Washington, DC. and is now on the mend at home with his family.

Lori-Ann '84 and Tom Desjardins and Patrick Jordan '82 visited Buckland in October and brought him a bag of gifts from Maine Central Institute.

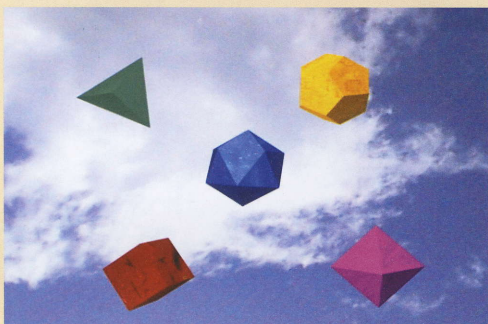
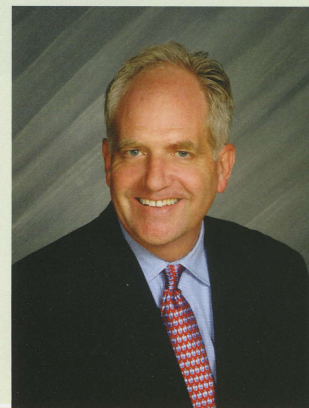
"We found Brad in good spirits, sitting up and looking forward to going home," Tom Desjardins said. "He was very appreciative of the gift bag you sent and was really glad to get some goodies from home. Brad was anxious to hear about what's going on at MCI and how the music program was doing."

According to Desjardins, Buckland's long-term prognosis is favorable. He is working at physical therapy, and his doctors tell him he should regain his normal movement.

JAMES HORNOR INVITED TO WRITE FOR AP PREP BOOK

MCI Dean of Academics Jim Hornor has been invited by Houghton-Mifflin to write questions for their AP Language prep book.

Hornor was invited to participate because of his experience as a reader for the AP exam and for his AP workshop presentations.



MATH TEAM HAS IMPRESSIVE SHOWING

The MCI Math Team had an impressive showing at the recent Eastern Maine Math League meet.

In the South League, held in Orono, MCI teams placed third, fifth, eighth and fourteenth. In individual achievements, Linz Nguyen '09 placed seventh, Snow Tram '09 placed tenth, Chloe Kim '09 placed 13th, and Justin Lee '09 placed 15th.

VISITORS FROM THE EAST

Contingent From Japan Makes 11th Annual Visit To MCI

by Sarah Walsh

On a gorgeous Wednesday evening this fall, a group of 24 families gathered in front of Wright Gym, and shortly afterwards 39 high school students and 5 chaperones from half way around the world pulled up in a bus. This was the beginning of a multitude of friendships and experiences that will last a lifetime.

The travelers were from Minami Senior High School in Aomori City, Japan, and their host families were from Maine Central Institute encompassing Pittsfield, Burnham, and Detroit. After being welcomed by the MCI Head of School Joanne Szadkowski and Minami Senior High School Principal Mr. Mori, they were matched up and taken home to enjoy an evening with their new families.

The Japanese students attended many classes with their American hosts and hostesses at MCI, including launching film canister rockets in chemistry class. They engaged in many other activities including bowling, shopping, pumpkin carving, cooking, and eating lots of pizza. Some even braved the elements to attend an American football game in Millinocket, while others were treated to lobster at a Bangor restaurant.

The Aomori students also went to Vickery and Warsaw schools and interactively performed for our local younger students. They explained their cultural heritage using traditional fairy tales, toys, dances, songs, language and dialect. The Saturday morning of their departure at a thank you breakfast and ceremony, the Aomori students played guitar and piano, danced ballet, and sang for their host families.

This was the 11th visit to our school by a group from Aomori, and the experience gained by our MCI students and their families is enumerable. They quickly learn how to communicate with someone who may not speak the English language fluently, and how to make a stranger feel welcome and more like a friend. And they do it all with kindness, compassion, and a generosity of spirit, which makes it very hard for their new friends to leave.



JULIE TREADWELL NAMED PRESIDENT OF MIAAA

First Female President Of The Athletic Administrators Association

MCI Director of Athletics, Activities and Wellness Julie Treadwell was recently named the first female president of the Maine Interscholastic Athletic Administrators Association.

Treadwell has spent seven years on the MIAAA's Board of Directors, most recently as vice president. She has been a fixture at MCI for 24 years, serving as a teacher, administrator and coach, and has been part of the MIAAA for 16 years.

"Obviously it's good for me to challenge myself as an educational leader and in the world of athletics," Treadwell said recently. "To me, it's partly my responsibility to go through the ranks and be the president so I can try to give everybody all the great things that have been given to me."



Julie Treadwell



Rising Waters

Paul Bertrand '59 Working To Rebuild Pittsfield Town Pool

MCI Trustee Paul Bertrand '59 heard complaints for years about the state of disrepair of the Pittsfield town pool. He finally decided to do something about it by spearheading a fundraising drive to replace the pool and build a new bath house at the Manson Park site.

Built in 1953 by the local Kiwanis club, the Pittsfield pool was constructed with "hot top", meaning it was not made of concrete. Over the years since its construction, the pool has deteriorated and leaked, soaking the grass and grounds surrounding it. Repairs were made to patch the leaks but they never held and the pool keeps leaking.

"I got tired of hearing the complaints about the pool," said

Bertrand, so he turned his attentions toward raising money to replace the aging pool. So far the effort has raised about \$275,000 toward a goal of \$400,000. "We have enough money now to replace the pool, and now we're raising the rest to replace the bath house," Bertrand said. This fall the old hot top was removed, leaving the gaping hole for the new pool. In the warmer weather of next spring the new tile, plaster and plumbing will be installed, with an anticipated opening of the new pool set for July, 2008.

The pool is

managed by the Town of Pittsfield Recreation Department, which offers open swimming time to the general public throughout the summer, as well as swimming lessons to children. While it is not an Olympic-sized pool, the deepest end is 8 ½ feet.

The Pittsfield pool is close to Bertrand's heart because he has spent time there, as have his children and grandchildren. He's not alone. "Some of the people who have donated said that they used the pool, or their kids, or their grandkids," Bertrand explained. "People have ties to it, they want this new pool to happen."



Paul Bertrand '59

ENSURING MCI'S FUTURE

ALUMNI CHALLENGE!

Michael T. Savage '62 and Thomas W. Savage '64 extend a challenge to those alumni who have not yet given to this campaign. For every dollar that you send in support of this campaign, the Savage brothers will generously match them up to a maximum of \$150,000. Mike and Tom's gifts along with yours will have a significant impact on reaching our goal. Please help us make this campaign a success and consider meeting this very important challenge. Every dollar counts!



CAPITAL CAMPAIGN STILL GOING STRONG

Maine Central Institute has raised over \$2.2 million of its \$2.5 million goal in the *Ensuring MCI's Future* capital campaign.

Ensuring MCI's Future continues our tradition of offering students an enriched, unique educational experience that will last a lifetime. Equally important, this campaign reaches beyond the boundaries of the MCI campus, creating a place for everyone - students, faculty, alumni and the community - with the creation of the Donna Leavitt Furman '41 Student Center. The campaign will also help us build the school's endowment so that we can indeed *Ensure MCI's Future*.

While so many of you have been so very generous to this campaign, we still need your help. It's not too late to make a gift to the *Ensuring MCI's Future* capital campaign. Simply fill out the enclosed pledge envelope and send your gift today!

You can also make a gift to the *Ensuring MCI's Future* capital campaign online. Visit our web site at: www.mci-school.org/forms.cfm?myform=1352s to make your donation today. For more information, call (207) 487-5915.

ENSURING MCI'S FUTURE

We sincerely appreciate the following people who have already generously supported this project.

\$500,000 and Above

Mr. and Mrs. Ross Furman
\$250,000 - \$499,999
 Mr. and Mrs. Gregory Patterson
\$100,000 - \$249,999
 Mr. Jeffery Hazell
 Mr. and Mrs. Michael Savage
 Mr. and Mrs. Thomas Savage
\$50,000 - \$999,999
 Estate of Freda Gould Bagley '37

Mr. and Mrs. E. Robert Kinney
 Mr. Robert Menucci
 TD Banknorth Group, Inc.
 Mr. Norbert Young, Jr.

\$25,000 - \$49,999

Mr. and Mrs. Francis Bowen
 Mrs. Helen Cianchette
 Mrs. Tania Hannon
 Meridian Lodge
 Merrill Merchants Bank
\$10,000 - \$24,999
 Kleinschmidt Associates

Mrs. Theo Walker

\$5,000 - \$9,999

Anonymous
 Mrs. Sally Baker
 Mr. and Mrs. William Ball
 Mr. Mark Bickford
 Sally and Peter Bryant
 Mr. and Mrs. Weston Bubar
 Mrs. Nancy Cameron
 Mr. Garret Cole
 Doug and Lori Cummings
 Susan and David England
 Mr. and Mrs. Anthony Frederick, Jr.
 Gordon Construction
 Mrs. Donna Graham
 Mr. Dean Homstead
 Mr. and Mrs. John LeMieux
 Mr. and Mrs. David MacGown
 Mr. Todd Nadeau
 Newhouse Family
 Mrs. Anna Maria Parker
 Ms. Joanne Szadkowski and Ms. Julie Treadwell
 Mr. and Mrs. Harry True
 Webber Energy Fuels
 Mr. and Mrs. Warren Weigel
 Mr. and Mrs. John Wentworth
\$2,500 - \$4,999
 Beach Club
 Mr. and Mrs. Paul Bertrand

Douglas and Tania Carnrick
 Mrs. Jean Carter
 Dr. Preston Carter
 Mr. and Mrs. Scott Carter
 Mr. Terry Chadbourne
 Mr. and Mrs. James Christie
 Mr. and Mrs. Robert Hayes
 Mr. and Mrs. Michael Hodgins
 Mr. and Mrs. James Hornor
 Mr. Gary Liimatainen
 Mrs. Jean Maynard
 Mr. and Mrs. Aaron Neron
 Mr. and Mrs. Roger Percival
 Mrs. Carolyn J. Smith
 Ms. Helene Staples
 Mr. and Mrs. Josh Tardy
 Mr. and Mrs. Peter Vigue
 Mrs. Jennifer Whitesel
 Mr. and Mrs. Bernard Williams

\$1,000 - \$2,499

Mr. and Mrs. Jason Allen
 Mr. and Mrs. N. Blake Bartlett
 Mr. Thomas Bertrand
 Mrs. Brenda Breton
 Mrs. Elaine Brown
 Mr. Kenneth Brown
 Mr. and Mrs. William Carr
 Mr. and Mrs. David Fortin
 Kelli and Brent Frost
 Ms. Carol Good
 Dr. and Mrs. Thomas Harvey
 Mr. Woong-Sup Lee
 Mrs. Charlene Lowe
 Mr. James Lynch
 Mr. and Mrs. Jack May
 Mr. James Maynard
 Mr. Rick McCarthy
 Ms. Roberta McGuire
 Senator Betty Lou Mitchell
 Ms. Laura Norris
 Ms. Lynn Nunez-Kemp
 Mr. Michael Ouellette
 Mr. Paul Pietranico
 Mr. Thomas Pike
 Mr. and Mrs. Edward Porter
 Mr. Matthew Raynes
 Ginger and Charlie Russell
 Mr. Craig Sargent
 Mrs. Amanda Sherburne
 Mr. and Mrs. John Slagle
 Ms. Linda Thornton
 Mr. Clint Williams
\$1.00 - \$999
 Mrs. Linda Amsden

Anonymous

Mr. Troy Baker
 Ms. Jennifer Beane
 Mr. George Bent
 Ms. Faye Bickford
 Bois Real Estate
 Mrs. Lancy Bradshaw
 Mrs. Sunny Brown
 Mr. and Mrs. Richard Clark
 Class of 2007
 Kenneth and Mary Connors
 Mr. Sherman Cookson
 Capt. Nicholas Craig
 Jean and William Crangle
 Ms. Linda Cregnoles
 Mr. and Mrs. Ralph Damren
 Mrs. Kathy Dion
 Ms. Carlene Engstrom
 Mr. Lawrence Foster
 Mr. Larry Heim
 Mr. Jason Judd
 Mr. Robert Knecht, Jr.
 Dr. Peter Kohler
 Lehr Insurance Agency
 Mr. and Mrs. Milton Lindholm
 Mrs. Linda Marson
 Mr. Samuel Marzenell
 Mr. John Messer
 Mr. and Mrs. Edward Miller
 Mr. and Mrs. Thomas Millett
 Mr. and Mrs. Peter Oliver
 Mr. Jeffrey Patten
 Mrs. Alice Patterson
 Mr. and Mrs. Steven Peterson
 Dr. and Mrs. David Pierce
 Winn Price and Leigh Hallett
 Ms. Susan Quinn
 Ms. Sarah Reeves
 Mr. Peter Richard
 Rowe Ford Sales
 Mrs. Deborah Rozeboom
 Mrs. Sharon Savasuk
 Mrs. Persis Smith
 Mr. Robert Smith
 Mrs. Ruth Valore-Heaphy
 Ms. Gretchen Voter
 Mr. and Mrs. Richard Waite
 Ms. Sarah Walsh and Mr. Owen Brown
 Ms. Joyce Williams
 Mrs. Nancy Wilson
 Mr. Tom Winsor
 Mr. Gerry Wright

MCI's Capital Campaign Cabinet

Honorary Chairs

Gregg Patterson '69,
 Trustee

Mike Savage '62, Treasurer,
 MCI Board of Trustees

Campaign Co-Chairs

John LeMieux '78, former-
 Vice President, Board of
 Trustees

Tania Winsor Hannon '65,
 Trustee

Cabinet Members

Dean Homstead '69, former
 Trustee

Jack May, Trustee

Sally Smith Bryant '61,
 Trustee

Mike Hodgins '86, former
 President, Board of Trustees
 Scott Carter '73, President,
 Board of Trustees

Mike Fendler '70, former
 Trustee

Anthony Frederick Jr. '59,
 Trustee

George Newhouse '54,
 Trustee Emeritus

Norbert Young Jr. '66,
 Trustee

William Ball '63, Trustee

Gregg Newhouse '81,
 Trustee

Jim Christie '85, Trustee
 Joanne Szadkowski, MCI
 Head of School

Todd Nadeau, MCI Dean For
 Institutional Advancement
 Sue Bernier, BHC Consulting
 Group, Philanthropy
 Advocates LLC



ENSURING MCI'S FUTURE

FROM GROUNDBREAKING...

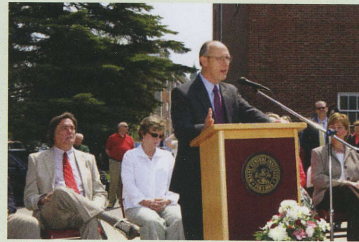
The School Community Participates In Dedication The New Facility



A group of major donors to the capital campaign had the honor of breaking ground for the new Donna Leavitt Furman '41 Student Center.



Lead campaign donor Ross Furman '63 dedicated the new building in honor of his mother, Donna Leavitt Furman.



Peter Vigue '65, President of Cianbro Corporation, was the keynote speaker at the groundbreaking ceremony. Cianbro constructed the new facility.



Staff, faculty, students and friends were invited to sign a steel girder that would be built into the new Student Center. Here, Student Council President Amanda Asaro '07 signs her name to the girder.

TO RIBBON CUTTING

MCI Cuts The Ribbon On The Donna Leavitt Furman '41 Student Center



MCI Head of School Joanne Szadkowski presented a line drawing of the new facility to Garry Sawtell of Cianbro, Project Manager for the project.



Major campaign donors in attendance included Norbert Young Jr. '66, Michael Savage '62, and Thomas Savage '64.



MCI Head of School Joanne Szadkowski presented Charlie Cianchette with a plaque that will be hung in the Donna Leavitt Furman '41 Student Center recognizing Cianbro's many years of generous support to MCI.



MCI Board of Trustees President Scott Carter '73 presented lead donor Ross Furman '63 with golden scissors to cut the ribbon on the new facility.



Alice Patterson '48 addressed the audience about her ties to MCI. Patterson's son, Gregg '69 and his wife, Elaine, named the new Student Lounge after his mother.



Major campaign donors cut the ribbon to the new Donna Leavitt Furman '41 Student Center.

FORE!

ANOTHER SUCCESSFUL ALUMNI OPEN



Golfers get ready to head out on the greens.



The Walpole Woodworkers team.



The team from Franklin Printing

The annual MCI Alumni Open Golf Tournament was held recently at J.W. Parks Golf Course with 20 teams registering to play in this year's event.

The Alumni Open prizes were awarded as follows:

Long Drive contest Hole #2 - Justin Ladd, Julie Treadwell

Accuracy Drive - Dave Ross, Sherri Davis

Closest To The Pin Hole #13 - Kyle Ladd, Julie Treadwell

3rd Low Net (53) - LeMieux Group (John LeMieux, Scott Carter, Harry Fullerton, Lance LeMieux)

2nd Net (53) - Sebasticook Valley Hospital (Jack May, Betty May, Mike Peterson, Noretta Peterson)

1st Net (53 MOC) - Farm Way Express (Steve Salley, Steve Miles, Sherri Davis, Kevin Davis)

1st Low Gross (60) - MCI (Joanne Szadkowski, Julie Treadwell, Clint Williams, Dave Campbell)

Raffle Prize Winners:

Bethel Inn Resort Golf Getaway - Julie Treadwell

Adirondack chair and footrest from Walpole Woodworkers - John LeMieux

\$50 gift certificate to Olympia Sports (from Scott Carter '73 Servpro) - Mark Tardiff

\$50 gift certificate to Houston-Brooks Auction - Bette Bagley

Howard Miller clock from Awards, Signage and Trophies - Bob Hayes

Two bags from Irving Tanning Outlet Store - Ray Hiltz and Mark Tardiff

Golf Master from Wayland Magoon '65 - Barry Stegenga

Permanent botanical wreath from Heidi Ann's Flower Shop - Tina Fitts

HALL OF FAME 2007

MCI Inducts Savage, Young and Hazell



Tom Savage '64 accepts his Hall of Fame plaque from MCI Director of Admission Clint Williams '86.

THOMAS SAVAGE '64

Tom Savage graduated from Maine Central Institute in 1964, and went on to earn his B.S. degree in Economics from the University of Maine. He worked for several years at the Federal Reserve Bank in Boston, Massachusetts before entering the New England School of Law, from which he obtained his Juris Doctor in 1975. Tom returned to his hometown of Bangor to practice law and became a member of the Maine Bar Association, the American Bar Association, and the American Trial Lawyers Association.

Tom has served on the boards of numerous organizations, and went on to become President of the Board of the Penobscot Marine Museum, and a Board member of Waldo County General Hospital and Maine Central Institute. In 2007, he received the Stillwater Presidential Award for his many years of dedicated support to the University of Maine.



Norbert Young Jr. was inducted into the MCI Hall of Fame by former Board of Trustees President Michael Hodgins '86.

NORBERT YOUNG JR. '66

Norbert Young Jr. graduated from Maine Central Institute in 1966. He earned his BA from Bowdoin College, and a Master's of Architecture degree from the University of Pennsylvania.

He began his career in Philadelphia as an architect, then became a partner at Toombs Development Company, managing all aspects of design and construction. He joined the McGraw-Hill Companies in 1997 as vice president, editorial, for Dodge.

Norbert is currently president of McGraw-Hill Construction. He is Chairman of the Board of Directors of the International Alliance for Interoperability-NA, trustee of the National Building Museum, and an Overseer for the Graduate School of Fine Arts. He is a Fellow of The American Institute of Architects and in 2005 received the Edward C. Kemper Award from the AIA for outstanding service to the profession of architecture. He is also a member of the MCI Board of Trustees.



MCI Head of School Joanne Szadkowski inducted Jeffery Hazell '79 into the Hall of Fame.

JEFFERY HAZELL '79

Jeffery Hazell graduated from Maine Central Institute in 1979 after a year of postgraduate education.

Jeff received his B.S. degree in Hotel Restaurant Management from the University of New Haven in Connecticut, then went on to Orlando, Florida to work with Disney, Hyatt and TGI Fridays before starting his own company, Bar Harbor Seafood, a full line seafood distribution company, in 1986.

In 1991, Jeff opened his first Boston Lobster Feast restaurant, adding two more in the years since. This year he opened Jeffery's Restaurant & Piano Bar, an exclusive restaurant in the Doctor Phillips section of Orlando.

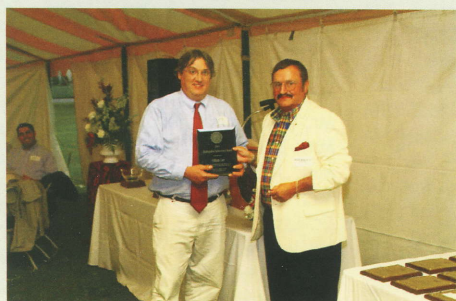
Jeff has been a long-time supporter of MCI and UNH, and recently received the University's Distinguished Alumni Award. He is also a trustee of the University of New Haven.

CEREMONY INCLUDES DISTINGUISHED ACHIEVEMENT AWARD, COMMEMORATIVE PLAQUES

Norbert Young Jr. '66, Thomas Savage '64 and Jeffery Hazell '79 were all inducted into the MCI Hall of Fame at a ceremony on Friday, August 3.

Past inductees, or their representative family member, were also invited to the ceremony to receive a commemorative plaque. Permanent plaques were installed in the new Donna Leavitt Furman '41 Student Center.

The ceremony also included the presentation of the Distinguished Achievement Award, which was given to MCI's Director of Food Services William Carr by MCI Alumni Association President Ralph Damren '64 (l-r).



ANNUAL FUND 2006-07

DONOR CATEGORY LIST

July 1, 2006-June 30, 2007

Head of School Society (\$20,000.00 +)

Mr. and Mrs. Gregory Patterson

Trustees' Society (\$10,000.00 +)

Mr. and Mrs. Kenneth Cianchette
CM Almy
Mr. and Mrs. Michael Savage
Mr. Norbert Young, Jr.

Founders' Society (\$5,000.00 +)

Mr. and Mrs. Stephen Collier
E. W. Leonard, Inc.
Herman and Henrietta Denzler
Charitable Trust
Mr. and Mrs. Robert Libby
Estate of Miss Eleanor Toothaker
Webber, B.L. Living Trust

Manson Society (\$2,500.00 +)

Ms. Elizabeth Calise
Mr. and Mrs. Robert Downs
Macy's
Reny Charitable Foundation

Weymouth Society (\$1,000.00 +)

Andrew B. Cline & James M.
Lovely Memorial Scholarship Fund
Dr. David Austin
Mr. and Mrs. William Ball
Mr. and Mrs. James Christie
Mrs. Evelene Cianchette Estate
Mrs. Cynthia Crocker
Mrs. Alice Dunn
Mr. and Mrs. Anthony Frederick, Jr.
James Gould and Page Talbott
Mrs. Donna Graham
Mr. and Mrs. Richard Hartford
Mr. Dean Homstead
Mr. Robert Hydrisko
Hydro Grass Corporation
Mr. and Mrs. E. Robert Kinney
Mr. Bruce LaVallee-Davidson
Mr. Woong-Sup Lee
Mr. and Mrs. John Leonard
Melmec Education Foundation
Mr. Robert Menucci
Nigro Construction, Inc.
Northeastern Environmental
Services
Oak Grove School Foundation
Mr. and Mrs. Dale Penney
Mr. and Mrs. Roger Percival
Mr. and Mrs. Robert Perry
Major Royce Rich
Mr. and Mrs. Thomas Savage
Sebasticook Valley Hospital
Miss Linda Shorey
Ms. Joanne Szadkowski
Mrs. Theo Walker
Dr. and Mrs. Paul West

Rowe Society (\$500.00 +)

Mr. Michael Ames
Anonymous
Peter and Sally Bryant
Douglas and Tania Carnrick

Mr. and Mrs. Scott Carter
Mr. and Mrs. Ival Cianchette
CML Services
David and Susan England
Exxon Mobil Corporation
Mr. Thomas Gordon
Mrs. Tania Hannon
Mr. and Mrs. Michael Hodgins, Esq.
Dr. and Mrs. Paul Houston
Mr. and Mrs. Manley Huff
Arthur and Sallie Huot
Mr. Clint Lasselle Jr.
Mr. and Mrs. Andrew Laughton
Mr. Michael Lynch
Maine Society for Healthcare
New Hampshire Charitable Founda-
tion - Upper Valley Region
Ms. Anna Maria Parker
Mr. William Pullen
Mr. Bruce Rosewell
WABI TV 5
Mrs. Rosalie Williams
Robert and Nancy Wilson
Mr. Gerry Wright

1866 Society (\$250.00 +)

Mr. and Mrs. Alexander Agostinelli
Mr. and Mrs. Jason Allen
Amazatto Foods & Marketing, Inc.
Bolster's Rubbish Removal
Mrs. Lancy Bradshaw
Cianbro Corporation
Mr. Daniel Clough
Mr. and Mrs. Ralph Damren
Ms. Linda Eastman
Mr. and Mrs. Ryan Fendler
Mr. Stephen Fendler
John Hartleb DMD
Dr. and Mrs. Thomas Harvey
Huff Forest Products
J & D Builders
Mr. Neil Larochelle
Mr. Norman MacLeod
Mr. James Maynard
Mrs. Jean Maynard
Frank and Karen McGrady
McLeods Driving School
Merrill Merchants Bank
Mid State Gas
Mr. Dalen Mills
Miss Marilyn Nash
Mr. William Nolan
Mrs. Alice Patterson
Pittsfield Community Garden Club
Pittsfield Pharmacy
Mr. Elbert Prince
Miss Tiffany Richards
Sebasticook Valley Federal Credit
Union
Stride Rite Corporation
Town & Country Realty
Mr. and Mrs. F. Tredinnick III
Varney Chevrolet
Verizon Foundation
Waltz Pharmacy, Inc.
Mrs. Elizabeth Whalen
Mr. Leigh White
Mr. William White

Alumni/ae Society (\$100.00 +)

Ms. Constance Alden
Ms. Virginia Allen
American Legion Post #32
Ameriprise Financial
Angler's Restaurant
Anonymous
Mr. and Mrs. Timothy Archibald
Mrs. Adrienne Ashbaugh
Mr. Norris Ashe
Mr. and Mrs. Phillips Baird
Mr. and Mrs. N. Blake Bartlett
Mr. Robert Beattie
Mrs. Kathleen Berlinghof
Richard and Beverly Berry
Mrs. Sylvia Berry
Mr. Thomas Bertrand
Mr. Ronald Bessey
Mr. Bennett Bickford
Mrs. Nancy Billings
Mr. Frank Blanchard
Mrs. Joan Bradley
Mr. and Mrs. William Bradshaw
Ms. Pamela Brooks
Mr. and Mrs. Lance Browne CLU
Mr. William Bryant
Mrs. Sylvia Bubar
Mr. Philip Boker
Burky & McCarthy Law Office
Mrs. Nancy Cameron
Mr. Albert Card
Harold and Sandra Carson
Mr. Thomas Chadwick, Jr.
Miss Sarah Chipman
Ms. Elizabeth Cianchette
Mr. and Ms. Mac Cianchette
Mr. and Mrs. Richard Clark
Mr. Joseph Coffin
Mr. and Mrs. Phillip Coffin
Mr. Garret Cole
Ms. Mary Connolly
Mr. and Mrs. Eugene Crolepy
Ms. Louise Cyr
Mr. Jon Dawson
Mr. and Mrs. Robert Desjardins
Mr. and Mrs. Michael Dow
Mrs. Mary Emerson
Mr. Raymond Farnham
Mr. and Mrs. Gary Fitts
Mr. Stanley Fletcher
David and Tracie Fortin
Mrs. Karen Fraser
Mr. and Mrs. Dominic Gacetta
Mr. and Mrs. Ralph Garner
Mr. Richard Getchell
Mr. Adolph Gingras, Jr.
Ms. Marie Glynn
Ms. Carol Good
Mr. Gary Goodrich
Dr. Roger Goodson
Mr. Ernold Goodwin, Jr.
Mr. Richard Gordon
Mr. Theodore Grant
Mr. and Mrs. Jerome Hallee
Mr. and Mrs. Kenneth Hallee
Mr. James Harrington
Mr. Ashley Hart

Mr. Frank Haseltine
Dr. Susan Haseltine
Mr. and Mrs. Steven Hodgkins
Mrs. Gloria Huff
Mr. William Hutchinson
Mr. Ronald James
Dr. and Mrs. Allen Jervey
Mr. Patrick Jordan
Mr. Ronald Kinney
Mr. Louis Krause III
Ms. Romaine Kupfer
Mr. Sherman Lahaie, Jr.
Mr. and Mrs. Ronald Lambert
Ms. Michelle Lawn
Gordon and Elizabeth Lazerte
Mrs. Patricia Levasseur
Donna Liimatainen-Peterson and
Erik Peterson
Mr. and Mrs. Milton Lindholm
Mrs. Laurie Loosigian
Mr. and Mrs. Jeremy Lord
Lovejoy Health Center
Mrs. Charlene Lowe
Mr. and Mrs. James MacMichael
Ms. Carol Mandzik
Mrs. Loren Martin
Ms. Mary McCormick
Mr. and Mrs. Michael McCready
Edward McFarland, M.D.
Mr. and Mrs. Keith McFarland
MCI Football Boosters
Mr. and Mrs. Thomas Millett
Mrs. Maxine Mittelstadt
Mr. Bruce Morrison
Mr. and Mrs. David Mosher
Mrs. Helen Mosher
Mr. Todd Nadeau
Mr. Charles Napier
Mrs. Betty Nathaniel
Mr. Leonard Nemon
Mr. Gerald Newhall
Mr. and Mrs. George Newhouse
Mr. and Mrs. Gregg Newhouse
Reverend Thomas Niblock
Ms. Laura Norris
Mrs. Rita Norton
Mr. Scott Olney
Mrs. Margaret Olson
Mrs. Martha Overlock
Dr. and Mrs. Michael Parker
Mrs. Patricia Pellegrino
Mr. Louis Pepin
Fred and Diane Pierce
Pittsfield Kiwanis
Pittsfield Tuesday Club
Mr. and Mrs. Edward Porter
Mr. and Mrs. Thomas Quint
Roland and Eloise Reilly
Mr. Alton Richardson IV
Mr. William Richardson
Mrs. Barbara Roach
Mrs. Julia Rodenbeck
Mrs. Malaka Russell
Dr. Lisa Sauer
Mr. Walter Sauer
Miss Cecelia Shatney
Mrs. Rosalie Shaw

ANNUAL FUND 2006-07

DONOR CATEGORY LIST (cont.)

July 1, 2006-June 30, 2007

Mr. Michael Shea
Mrs. Judith Simonton
Michael and Patricia Skaling
Mrs. Carolyn Smith
Mrs. Persis Smith
Mr. Robert Smith
Mr. and Mrs. Sterling Smith
Mr. and Mrs. Charles Sova
Mr. Dale Springer
Mr. and Mrs. Frank Susi
Mr. Peter Susi
William and Lorna Taylor
Mrs. Ruth Thomas
Mrs. Linda Thornton
Mr. Wayne Tilton
Mr. and Mrs. Frank Tredinnick, Jr.
Mr. Neal Ward
Mr. Milton Webber
Mrs. Jennifer Whitesel
Mr. and Mrs. Bernard Williams
Mr. Tom Winsor
Mr. and Mrs. Stanley Wyman
Mr. Kenneth Yanco

Husky Circle (\$1.00 +)

George and Shirley Ackerman
Miss Lauren Adams
Mr. and Mrs. Leland Akerley
Glenn and Carrie Allen
Mr. and Mrs. Richard Allen
Mr. Perino Almonte
Mr. Maynard Ames
Mr. and Mrs. Richard Anderson
Anonymous
Awards Signage & Trophies
Mr. Herbert Bailey
Ms. Jennifer Beane
Mr. Robert Beattie
Mr. James Birmingham
Mr. Owen Bolster
Mr. and Mrs. Francis Bowen
Mr. and Mrs. John Boylen
Mrs. Joan Bradstreet
Mr. Spencer Brookes II
Mrs. Kellie Brooks
Miss Opal Brooks
Mr. Ronello Brown
Mr. Arey Bryant
Mr. and Mrs. Theo Bryant
Bud's Shop 'N Save
Mr. E. Bunker
Mr. Victor Burnheimer
Brig. Gen. Stephen Burritt
Mr. Raymond Buxton
Mr. Seth Carron
Mrs. Jean Carter
Mr. Anthony Caruso
Dr. Bruce Cassidy
Mrs. Harriet Cederstrom
Miss Sara Lynn Chadbourne
Mr. Harvey Chambers
Mr. and Ms. Ralph Chapman
Mrs. Marie Chase
Miss Pagel Chase
Charles and Kathy Chazin
Mr. Richard Chick
Mrs. Helen Cianchette
Miss Megan Cianchette

Mrs. Elizabeth Clark
Mr. Ralph Clark
Mr. Frank Collamore
Mr. and Mrs. Bruce Collett
Miss Alison Comissiong
Miss Amber Lyn Cook
Miss Brittany Cookson
Mrs. Gladys Cookson
Mr. and Mrs. C. Corey
Mr. and Mrs. John Corrigan
Ms. Eileen Corrow
Mr. Corey Cote
Mr. and Mrs. Waldo Covell
Miss Anna Marie Cowan
Ted and Brenda Crabtree
Mr. Kyle Crabtree
Mr. and Mrs. Brian Craig
William and Jean Crangle
Crisis & Counseling Centers
Mr. and Mrs. James Crocker
Mrs. Patricia Cunningham
Mr. and Mrs. Richard Curley
Mrs. Eunice Damren
Mr. and Mrs. Arthur Danielson
Ms. Anne Dobson
Ms. Marie Donahue
Ms. Ella Donohue
John and Louise Dow
Mr. David Dunn
Mrs. Kathleen Durost
E. Robin Thurston, Insurance
Mr. and Mrs. Stanley Evrard
Richard and Carol Farnsworth
Ronald and Georgie Farrin
Mrs. Myrtie Farrin
Mr. Donald Fenton
Mr. and Mrs. Dana Fields
Mrs. Alice Fitts
Mrs. Beulah Fortier
Melvin and Carolyn Foster
Mr. Desmond Fuller
Mrs. Regina Garenani
Ms. Rebecca Geagan
Mr. and Mrs. Christopher Gerry
Mr. Brian Getchell
Mrs. Glenys Gifford
Mr. Brandon Glencross
Terry and Susan Goddard
Mr. and Mrs. Richard Godfrey
Mr. and Mrs. Dean Grant
Mr. and Mrs. John Grass, Jr.
Ms. Judy Gray
Mrs. Anna Griffin
Mr. Duane Grosz
Mrs. Suzanne Guild
Mrs. Estelle Habenicht Estate
Rusty and Dena Hall
Miss Julia Hammond
Mr. Brian Hanson
Miss Elizabeth Hanson
Mr. Harold Harding
Mr. and Mrs. James Harold
Mr. and Mrs. Donald Harriman
Mrs. Vicki Harriman
Mrs. Leona Haseltine
Mr. Basil Heffren
Mr. William Hendricks, Jr.
Mrs. Violet Higgins

Mrs. Cynthia Hinckley
Mr. and Mrs. Arthur Hincks
Mr. and Mrs. Frank Homstead
Miss Courtney Howe
Mr. and Mrs. David Ingraham
Miss Korin Ingraham
Mr. and Mrs. Floyd James
Mrs. Anne Jenkins
Mr. Walter John
Denise Joy and Fred Flammia
Mrs. Janet Kaufman
Ms. Audrey Keeley
Mr. Thomas Kelley
Mr. Trenton Kelley
Ms. Sophia Kellis
Mr. Bradley King
Mr. Kyle King
Mrs. Tanya Kingsbury
Mr. Joshua Knowles
Mrs. Carol Lancaster
Mrs. Jeanne Landry
Mr. Joshua LaPierre
Mr. and Mrs. Floyd Lawrence
Miss Hyo Jin Lee
Ms. Jennifer Leonard
Mr. and Mrs. Gregory Libbey
Mr. and Mrs. Blair Libby
Mrs. Shirley Libby
Mr. Kyle Liimatainen
Mr. and Mrs. Elwin Littlefield
Mr. Walter Littlefield
Mrs. Marilyn Lloyd
Mr. and Mrs. Joseph Loring
Vaughn and Margaret Lowell
Mr. and Mrs. Charles MacDonald, Jr.
Mr. Jung Yeoul Maeng
Philip and Joan Mandzik
Dr. James Manning
Mrs. Justine Marks
Scott and Lynn Marquis
Mr. and Mrs. Stephen Martin
Mr. Nicholas Mavodones
Mrs. Janine McBean
Miss Jenna McCarthy
Mr. Wayne McDermott
Mr. David McGaffin
Mr. Patrick McGrady
Mrs. Rebecca McKenney
Mr. and Mrs. Cecil McLaggan, Jr.
Mrs. Susan Mendell
Mr. Benson Mensah-Bonsu
Mrs. Suzanne Mercier
Mr. James Merrill
Mrs. Meredith Monte
Mrs. Catherine Mooers
Miss Elizabeth Morin
Miss Lucy Mosher
Mr. David Murray
Mrs. Beverly Nadeau
Mr. Lester Nadeau
Mr. Louis Nadeau
Mr. and Mrs. Paul Nadeau
Miss Kendra Nash
Mr. Henry Nason, Jr.
Mr. Mark Neace Jr.
Mr. and Mrs. Robert Nixon
Mrs. Marlisa Noonan

Mr. William O'Connell
Mr. and Mrs. David O'Connor
OES Bethlehem Chapter #36
Mr. and Mrs. Peter Oliver
Mrs. Dorothy Orr
Mr. and Mrs. Bruce Parker
Frank and Helmi Perry
Mr. Thomas Pickford
Pittsfield Arts Club
Mrs. Inez Pomerleau
Ms. Barbara Pomeroy
Mrs. Arlene Pond
Miss Sandra Poulin
Mrs. Sandra Powers
Mrs. Barbara Pray
Mrs. Barbara Randall
Ms. Anne Reid
Mr. John Reid
Peter and Lori Riegelmann
Mrs. Lillian Rivers
Miss Nina Robinson-Poole
Mrs. Nina Rochette
Mr. and Mrs. Norman Rogers
Mrs. Colleen Rohrer
Mrs. Joyce Rowe
Mr. and Mrs. Ronald Royal
Ms. Lisa Russo
Mrs. Dale Seaburg
Mrs. Susan Shaw
Mrs. Nancy Shorey
Mrs. Gail Sleeper
Mr. David Slezak
Miss Cynthia Sloma
Mrs. Marrietta Smith
Thomas and Pamela Snowman
Mr. and Mrs. Laurence Springer
Mr. Thomas Staples
Ms. Brenda Stevenson
Ms. Madeline Stevenson
Mr. Wayne Susi
Mr. Earle Tarbell
Mr. Basil Tasker, Jr.
Roger and Pauline Theoret
Mr. Edward Therrien
Mrs. Jennie Thompson
Mr. Wayne Thurston
Mrs. Hope Tormey
Mrs. Ruth Valore-Heaphy
Larry and Margaret Veilleux
Ms. Gretchen Voter
Mrs. Sheilya Voter
Mrs. Arlene Wakefield
Waldo County Education Assoc.
Mrs. Marie Walker
Mr. Robert Ward
Watts Family Trust
Mr. Ed Webster
Mr. R. Wehrwein
Mr. Thomas Wentworth
Miss Sarah West
Ms. June Wheeler
Mr. Gilbert White
Kevin and Michele Whitmore
Mr. and Mrs. Michael Wiers
Mrs. Betsey Williams
Mrs. Pauline Winters
Mrs. Margaret Witham
John and Barbara Wollensak
Miss Jillianne Wrin

ANNUAL FUND 2006-07

GIVING BY CLASS YEAR

July 1, 2006-June 30, 2007

Class Of 1926

Theo L. Walker
14.29% (1 out of 7)
gave/pledged \$1,000.00

Class Of 1932

Beulah Fortier
Edward A. McFarland
13.33% (2 out of 15)
gave/pledged \$150.00

Class Of 1933

Joseph A. Coffin
Arthur W. Danielson
Jennie Thompson
23.08% (3 out of 13)
gave/pledged \$195.00

Class Of 1935

Frank B. Homstead
E. Robert Kinney
11.76% (2 out of 17)
gave/pledged \$1,050.00

Class Of 1936

Roland E. Reilly
Norman A. Rogers
13.33% (2 out of 15)
gave/pledged \$100.00

Class Of 1937

Paul C. Houston
Andrew M. Laughton
Betsey Williams
18.75% (3 out of 16)
gave/pledged \$1,150.00

Class Of 1938

Elbert M. Prince
Eloise Reilly
Ruth Valore-Heaphy
14.29% (3 out of 21)
gave/pledged \$350.00

Class Of 1939

Maynard W. Ames*
Stanley L. Fletcher
Harold J. Harding
Rita Norton
20.00% (4 out of 20)
gave/pledged \$235.00

Class Of 1940

Ronello F. Brown
Victor V. Burnheimer*
James H. Merrill
Meredith Monte
Dorothy Orr
Arlene Pond
27.00% (6 out of 22)
gave/pledged \$215.00

Class Of 1941

Gladys Cookson
Floyd James
Jean Maynard
Arlene Wakefield
Neal R. Ward
21.74% (5 out of 23)
gave/pledged \$655.00

Class Of 1942

Perino E. Almonte
Sylvia Berry
Kenneth L. Cianchette
Carolyn Foster
Elizabeth A. Lazerte
Rosalie Shaw
Wayne L. Thurston
24.14% (7 out of 29)
gave/pledged \$10,380.00

Class Of 1943

Frank N. Collamore
Cynthia Crocker
Royce C. Rich
Lillian Rivers
Gail Sleeper
20.83% (5 out of 24)
gave/pledged \$3,155.00

Class Of 1944

Ival R. Cianchette
Richard O. Clark
Helmi Perry
11.11% (3 out of 27)
gave/pledged \$750.00

Class Of 1945

Regina Garenani
Roger B. Percival
Wayne E. Susi
13.64% (3 out of 22)
gave/pledged \$1,095.00

Class Of 1946

Kathleen Durost
Donna Graham
Basil C. Heffren
Blair B. Libby
Henry W. Nason
Ruth Thomas
Joyce Wyman
Stanley G. Wyman
21.62% (8 out of 37)
gave/pledged \$1,380.00

Class Of 1947

Alexander C. Agostinelli
Ralph M. Clark
Eunice Damren
Alice Fitts
Desmond Fuller

William Hendricks

Margaret Lowell
Cecil L. McLaggan
Thomas F. Staples
Marie Walker
18.52% (10 out of 54)
gave/pledged \$485.00

Class Of 1948

Robert S. Beattie
Arey C. Bryant
Theo A. Bryant
Helen Cianchette
Neil E. Larochelle
Robert H. Libby
Norman MacLeod
Thomas O. Millett
Alice Patterson
Elizabeth Whalen
Gilbert M. White
21.15% (11 out of 52)
gave/pledged \$7,615.00

Class Of 1949

Albert L. Card
Harriet Cederstrom
Dominic J. Gacetta
Richard E. Getchell
Brian A. Hanson
Walter F. John
Bruce C. Morrison
Cecelia A. Shatney
Basil C. Tasker
15.00% (9 out of 60)
gave/pledged \$750.00

Class Of 1950

Raymond E. Buxton
John A. Grass
Jerome P. Hallee
Walter F. Mooers*
Julia Rodenbeck
Colleen Rohrer
11.32% (6 out of 53)
gave/pledged \$432.50

Class Of 1951

Anonymous
Beverly Berry
Richard P. Berry
Mary Emerson
Adolph J. Gingras
Mary-Lou Grass
Patricia Levasseur
Lucy E. Mosher
Sterling I. Smith
Laurence C. Springer
William J. White
Barbara Wollensak
20.00% (12 out of 60)
gave/pledged \$1,072.50

Class Of 1952

Nancy Billings
Sandra Carson
Glenys Gifford
Violet Higgins
Jeanne Landry
Shirley Libby
David M. McGaffin
Wayne A. Tilton
Nancy Wilson
13.04% (9 out of 69)
gave/pledged \$1,135.00

Class Of 1953

Philip R. Buker
Elizabeth Calise
Sarah G. Chipman
Elizabeth Clark
Phillip L. Coffin
Brian Craig
Eugene Cropley
Gary C. Goodrich
John H. Hartleb
Carol Lancaster
Charles F. MacDonald
Catherine Mooers
Louis H. Pepin
Joyce Rowe
Dale Seaburg
18.52% (15 out of 81)
gave/pledged \$4,495.00

Class Of 1954

Sally Craig
Kenneth Hallee
William D. Hutchinson
Janet Kaufman
Nicholas M. Mavodones
George H. Newhouse
Leah Newhouse
Marrietta Smith
13.33% (8 out of 60)
gave/pledged \$501.00

Class Of 1955

Shirley Ackerman
Leland B. Akerley
Sonia Bartlett
Anne Bowen
Francis N. Bowen
Harvey R. Chambers
Carol Farnsworth
Dana L. Fields
Sandra Powers
Dale W. Springer
12.66% (10 out of 79)
gave/pledged \$430.00

Class Of 1956

Norris M. Ashe
William L. Bryant

ANNUAL FUND 2006-07

GIVING BY CLASS YEAR(cont.)

Donald F. Fenton
Sallie Huot
Gregory Libbey
Keith E. McFarland
Diane Pierce
Judith Simonton
9.52% (8 out of 84)
gave/pledged \$1,300.00

Class Of 1957
Phillips C. Baird
Bruce S. Collett
Justine Marks
Michael P. McCready
David A. Mosher
Inez Pomerleau
6.25% (6 out of 96)
gave/pledged \$375.00

Class Of 1958
Spencer C. Brookes
Roger Goodson
Ernold R. Goodwin
Gloria Huff
4.76% (4 out of 84)
gave/pledged \$426.00

Class Of 1959
Adrienne Ashbaugh
Frank B. Blanchard
Joan Bradstreet
Sylvia Bubar
E. V. Bunker
Nancy Cameron
Marie Chase
Anthony J. Frederick
Richard L. Gordon
Sophia L. Kellis
Walter E. Littlefield
Ellen MacMichael
James MacMichael
10.40% (13 out of 125)
gave/pledged \$1,808.00

Class Of 1960
Joan Bradley
Ronald L. Farrin
Glennis Fields
Dean E. Grant
David A. Ingraham
Sherman Lahaie
Floyd A. Lawrence
Marilyn A. Nash
Leonard I. Nemon
Michael Parker
9.09% (10 out of 110)
gave/pledged \$972.50

Class Of 1961
Richard J. Allen
Bennett E. Bickford

Sally S. Bryant
Jean Crangle
Anne Dobson
Thomas A. Gordon
Louis C. Krause
Rebecca McKenney
Patricia Pellegrino
Bernard C. Williams
7.87% (10 out of 127)
gave/pledged \$1,535.00

Class Of 1962
Ronald E. Bessey
Daniel L. Brooks
David W. Dunn
Carol Good
Jeremy M. Lord
Betty J. Nathaniel
Michael T. Savage
Robert Ward
Tom J. Winsor
6.29% (9 out of 143)
gave/pledged \$15,750.00

Class Of 1963
William B. Ball
Jon F. Dawson
Raymond W. Farnham
James J. Harrington
Anne Jenkins
Suzanne Mercier
Alton L. Richardson
Patricia Skaling
Robert J. Smith
Earle W. Tarbell
Margaret Veilleux
Jacqueline Williams
9.16% (12 out of 131)
gave/pledged \$1,875.00

Class Of 1964
Bruce R. Cassidy
Ralph W. Damren
Linda M. Eastman
Georgie Farrin
Theodore M. Grant
Richard A. Hartford
Frank T. Haseltine
Thomas R. Kelley
Ronald G. Kinney
Robert D. Menucci
Thomas C. Pickford
Thomas W. Savage
R. G. Wehrwein
9.77% (13 out of 133)
gave/pledged \$4,267.50

Class Of 1965
Pamela Brooks
James E. Gould
Tania Hannon

Ronald James
Charlene Lowe
Robert W. Perry
Michael C. Shea
Peter Susi
Leigh J. White
5.26% (9 out of 171)
gave/pledged \$3,500.00

Class Of 1966
Lance Browne
Kathy Chazin
Richard L. Chick
Vicki Harriman
James M. Manning
Dalen C. Mills
Gerald S. Newhall
Anna Maria Parker
Thomas F. Wentworth
Norbert W. Young
6.85% (10 out of 146)
gave/pledged \$11,175.00

Class Of 1967
Susan D. Haseltine
John A. Leonard
F. A. Tredinnick
Sheilya C. Voter
Michael A. Wiers
2.79% (5 out of 179)
gave/pledged \$2,550.00

Class Of 1968
Herbert M. Bailey*
Stephen C. Burritt
Garret E. Cole
Stephen Fendler
Cynthia Hinckley
3.34% (5 out of 150)
gave/pledged \$435.00

Class Of 1969
Anonymous
Mac C. Cianchette
Gary Fitts
Susan Goddard
Dean A. Homstead
James R. Maynard
Janine McBean
Bruce R. Parker
Gregory J. Patterson
Ronald P. Risciotti
Linda J. Shorey
7.30% (10 out of 137)
gave/pledged \$31,125.00

Class Of 1970
David B. England
Steven P. Hodgkins
1.60% (2 out of 125)
gave/pledged \$350.00

July 1, 2006-June 30, 2007

Class Of 1971
Judy Gray
Laurie Loosigian
William F. Nolan
Frank J. Susi
Linda Thornton
Milton A. Webber
Kenneth J. Yanco
6.67% (7 out of 105)
gave/pledged \$770.00

Class Of 1972
David R. Austin
Louise Cyr
2.20% (2 out of 91)
gave/pledged \$1,100.00

Class Of 1973
Michael J. Ames
Tania Carnrick
Scott L. Carter
Elizabeth A. Cianchette
Susan England
Jill Lambert
Ronald Lambert
Stephen J. Martin
Thomas Quint
Bruce E. Rosewell
Pamela Snowman
13.41% (11 out of 82)
gave/pledged \$2,920.00

Class Of 1974
Brenda Crabtree
Russell J. Hall
Cynthia E. Sloma
Paul K. West
4.94% (4 out of 81)
gave/pledged \$1,585.00

Class Of 1975
Karen McGrady
Lisa B. Sauer
2.20% (2 out of 91)
gave/pledged \$450.00

Class Of 1976
Colleen Martin
1.23% (1 out of 81)
gave/pledged \$25.00

Class Of 1977
Stephen R. Collier
Duane A. Grosz
Dale S. Penney
3.06% (3 out of 98)
gave/pledged \$5,745.00

Class Of 1978
Ashley R. Hart
Thomas D. Snowman

ANNUAL FUND 2006-07

GIVING BY CLASS YEAR(cont.)

July 1, 2006-June 30, 2007

2.30% (2 out of 87)
gave/pledged \$125.00

Class Of 1979

Dena Hall
Robert Hydrisko
Nina Rochette
2.46% (3 out of 122)
gave/pledged \$1,947.00

Class Of 1981

Glenn Allen
Carrie R. Allen
Tracye Fortin
Suzanne Guild
Gregg Newhouse
Jennifer Williams
3.92% (6 out of 153)
gave/pledged \$475.00

Class Of 1982

William M. Bradshaw
Patrick A. Jordan
Donna Liimatainen-Peterson
Nancy Shorey
3.48% (4 out of 115)
gave/pledged \$450.00

Class Of 1983

Kathleen Berlinghof
Jean Bradshaw
Mary E. Connolly
Kristen D. Penney
Edward E. Porter
3.88% (5 out of 129)
gave/pledged \$1,125.00

Class Of 1984

Timothy T. Archibald
Daniel P. Clough
Michael P. Dow
Manley H. Huff
Michael D. Lynch
Margaret A. Olson
4.48% (6 out of 134)
gave/pledged \$1,600.00

Class Of 1985

James C. Christie
Karen L. Fraser
Hope Tormey
2.34% (3 out of 128)
gave/pledged \$1,525.00

Class Of 1986

Michael A. Hodgins
Marlisa Noonan
Lori Riegelmann
2.78% (3 out of 108)
gave/pledged \$300.00

Class Of 1987

Kelly Huff
Scott Olney
Barbara Pomeroy
3.41% (3 out of 88)
gave/pledged \$469.87

Class Of 1988

Loren Martin
0.82% (1 out of 122)
gave/pledged \$100.00

Class Of 1989

Thomas B. Chadwick
0.92% (1 out of 109)
gave/pledged \$100.00

Class Of 1990

Robert C. Beattie
Thomas Bertrand
1.47% (2 out of 136)
gave/pledged \$150.00

Class Of 1991

Michelle Hodgins
Lynn Marquis
1.83% (2 out of 109)
gave/pledged \$275.00

Class Of 1992

Laura Norris
0.72% (1 out of 138)
gave/pledged \$100.00

Class Of 1993

Anonymous
Gretchen E. Voter
1.47% (2 out of 136)
gave/pledged \$75.00

Class Of 1995

Megan Cianchette
Alison Comissiong
1.32% (2 out of 151)
gave/pledged \$50.00

Class Of 1997

Alycia A. Allen
Jennifer V. Beane
2.38% (2 out of 84)
gave/pledged \$159.06

Class Of 2000

Kyle E. Crabtree
0.75% (1 out of 134)
gave/pledged \$20.00

Class Of 2001

Christopher T. Gerry
0.75% (1 out of 134)
gave/pledged \$50.00

Class Of 2002

William L. O'Connell
0.74% (1 out of 135)
gave/pledged \$5.00

Class Of 2007

Lauren Adams
Owen Bolster
Opal Brooks
Seth Carron
Anthony Caruso
Sara Lynn Chadbourne
Pagel Chase
Amber Lyn Cook
Brittany Cookson
Corey Cote
Anna Marie Cowan
Brian Getchell
Brandon Glencross
Julia Hammond
Elizabeth Hanson
Courtney Howe
Korin Ingraham
Trenton D. Kelley
Kyle King
Bradley King
Joshua Knowles
Joshua LaPierre
Clint Lasselle

Hyo Jin Lee
Kyle Liimatainen
Jung Yeoul Maeng
Jenna McCarthy
Patrick McGrady
Benson Mensah-Bonsu
Elizabeth Morin
Kendra Nash
Mark Neace
Sandra Poulin
Nina Robinson-Poole
David Slezak
Sarah West
Jillianne Wrin
18.78% (37 out of 197)
gave/pledged \$944.00

Class Of 2008

Tiffany Richards
0.70% (1 out of 143)
gave/pledged \$285.26

Totals for All Classes
5.34% (392 out of 7,340)
gave/pledged \$139,144.19.

*denotes alumni/ae who gave to the 2006-07 Annual Fund and subsequently passed away

The MCI Alumni Office is looking into offering increased benefits to our alumni.

Travelers' Insurance Company (through the Lehr Insurance Agency) a nationwide provider of insurance products, is interested in offering a group affinity discount for auto, homeowners, umbrella, ATVs and snowmobiles, etc. for MCI alumni.

If you're interested in a group affinity discount let us know. Contact Alumni Affairs Director Jennifer Voter Beane '97 at jbeane@mci-school.org, or call (207)487-5915, ext. 139.

TELL US ABOUT YOU!

Do you have a new job?
Did you earn a degree?
Did you buy a new home?

Did you just retire?
MCI wants to know about what's happening in your life and your classmates want to hear from you. Please submit news and photos to your class agent or to the Alumni Office at alumni@mci-school.org by January 5, 2008. You can also update your information and submit class news online at: <http://mci-school.org/alumnidev.cfm> (click on the "Add Alumni Info" link on the left).

ANNUAL FUND 2006-07

July 1, 2006-June 30, 2007

RESTRICTED GIVING:

Art Department: Dr. David Austin for Evelyn Springer Estate

Baseball Team: Bolster's Rubbish Removal, Huff Forest Products, J & D Builders, Michael D. Lynch '84, McLeods Driving School, Merrill Merchants Bank, Mid State Gas, Pittsfield Pharmacy, Town & Country Realty, Varney Chevrolet, Waltz Pharmacy, Inc.

Botany Award: Pittsfield Community Garden Club

Boys/Girls State: American Legion Post #32

Boys Soccer Uniforms: Mr. and Mrs. Robert K. Downs

John Howarth Scholarship: Mr. & Mrs. Richard G. Anderson, James Birmingham, Mr. & Mrs. John Boylen, Ms. Eileen Corrow, Mr. & Mrs. Richard Curley, Ms. Marie Donahue, Ms. Ella Donahue, E. Robin Thurston Insurance, Ms. Marie Glynn, Ms. Denise R. Joy & Fred Flammia, Mr. Wayne McDermott, Mr. Louis Nadeau, Mr. Charles Napier, Mr. and Mrs. David O'Connor, Ms. Anne Reid, Mr. John P. Reid, Ms. Lisa Russo, Susan Shaw, Mr. and Mrs. Charles E. Sova, Stride Rite Corporation, Pauline and Roger Theoret, Mr. Edward Therrien, Watts Family Trust, Michele & Kevin Whitmore

Andrew B. Cline & James M. Lovely Memorial Scholarship Fund: Scholarship Fund

Edna Reed Scholarship: Pittsfield Tuesday Club

Maurice & Hazel Earle Scholarship: Mrs. Lorna Taylor

Faculty Retreat: Anonymous

Girls Basketball Scholarship: Mr. William Pullen

Josh Sawyer Scholarship: Tom Bertrand '90, Burky & McCarthy Law Office, Hydro Grass Corporation, Clint Lasselle, Jr. '07, Ms. Richelle Lawn, Karen '75 & Frank McGrady, Mr. and Mrs. Robert Nixon, Pittsfield Kiwanis, Seabasticook Valley Federal CU, Mrs. Rosalie Williams

Elizabeth Crocker Scholarship: Mrs. Kellie Brooks

Future Problem Solvers: Mrs. Deborah Rozeboom

MCI Hardwood Club: Coach David Campbell, Nigro Construction, Inc.

MCI Wellness Day: Cianbro Corporation, Seabasticook Valley Hospital

Blaine Littlefield Scholarship: Ted & Brenda '74 Crabtree, Kyle Crabtree '00, Mrs. Myrtie Farrin,

George Damren Scholarship: Mr. and Mrs. Ralph '64 Damren, Mrs. Alice H. Dunn

E. W. Leonard Scholarship: E. W. Leonard, Inc., Audrey Keeley in memory of Elizabeth Oliver, Mr. & Mrs. John '67 Leonard

James M. Randall Scholarship: Mr. and Mrs. Stanley Evrard, Mr. and Mrs. Paul Nadeau, Mrs. Barbara Randall

DJ Richards Scholarship: Tiffany Richards '08

Christmas Gift Cards: Mr. Dean Homstead '69

Ike & Stella Huff Scholarship: Manley '84 and Kelly '87 Huff

Roy & Alice Sinclair Scholarship: Sallie Huot '56, Nancy Wilson '52

Tookie Russell Fund: Sophia L. Kellis '59

Libby Fellowship: Mr. and Mrs. Robert '48 Libby

Evelyn Springer Memorial: Ms. Mary McCormick

WMCI: Maine Society for Healthcare, Karen '75 & Frank McGrady,

Inspiration Award: Karen '75 & Frank McGrady

Track Boosters: MCI Football Boosters

Melmac Scholarship: Melmac Education Foundation

Margaret Kohler Havey Scholarship: Helen Mosher

Marshall & Rowena Nash Scholarship: Miss Marilyn A. Nash '60

W. Howard Niblock Scholarship: Rev. Thomas Niblock

Library Grant: Oak Grove School Foundation

Library Books: Estate of Eleanor A. Toothaker '30

Humanities Speaker Series: Gregg '69 and Elaine Patterson

Faculty Endowment: Gregg '69 and Elaine Patterson

Reny Charitable Foundation Scholarship: Reny Charitable Foundation

Music Department: WABI TV 5

Environmental Science: Betty L. Webber Living Trust

Humanities Department: Mrs. Rosalie Williams

History Textbooks: Mr. Norbert W. Young, Jr. '66

ANNUAL FUND 2006-07

July 1, 2006-June 30, 2007

Unrestricted AF (includes matching gifts) \$120,251.07

Restricted Annual Giving

Art Department	1,100.00
Baseball Team	3,350.00
Botany Award	300.00
Boys Soccer	3,000.00
Employee Holiday Gift	500.00
Environmental Science	5,000.00
Future Problem Solvers	10.43
History Department Retreat	500.00
History Textbooks	8,038.80
Humanities Dept.	500.00
Humanities Speaker	3,850.00
Library Grant	1,000.00
MCI Hardwood Club	3,979.23
Music Department	500.00
Softball	300.00
Tookie Russell Fund	50.00
Track Boosters Sled	200.00
Wellness	1,710.00
WMCI	650.00
Faculty/Endowment	3,000.00

37,538.46

Restricted Scholarships

Boys and Girls Club	230.00
Blaine Littlefield Scholarship	100.00
John Howarth Scholarship	1,310.00
Andrew B. Cline & James M. Lovely Schol.	2,256.39
Josh Sawyer Scholarship	2,979.00
DJ Richards Scholarship	285.26
Elizabeth Crocker Memorial Scholarship	25.00
George Damren Scholarship	1,100.00
Inspiration Award Scholarship	200.00
Elmer Leonard Scholarship	7,025.00
Ike & Stella Huff Scholarship	700.00
Libby Fellowship	5,000.00
Roy & Alice Sinclair Scholarship	1,250.00
James M. Randall Scholarship	100.00
Melmac Scholarship	1,000.00
Margaret Kohler Havey Scholarship	100.00
Marshall & Rowena Nash Scholarship	100.00
W. Howard Niblock Scholarship	100.00
Edna Reed Scholarship	125.00
Girls Basketball Scholarship	500.00
Reny Foundation Schol	3,000.00
Maurice & Hazel Earle Memorial Schol.	100.00

\$27,585.65

Restricted Memorials

Estate of Eleanor Toothaker	\$5,000.00
Estate of Estelle Habenicht	\$36.61
	\$5,036.61

Gifts-In-Kind

	\$31,080.37
Total Unrestricted and Restricted	\$221,492.16
Annual Auction 2007 Income	\$17,540.88

Total Annual Giving

\$239,033.04

Memorial Unrestricted gifts

In memory of Eleanor Toothaker: Constance L. Alden, Jean Carter, Patricia Cunningham, Alice Fitts, Mr. & Mrs. Gary Fitts, Carol Good, Mr. and Mrs. Frank Homstead, Romaine Kupfer, Marilyn Lloyd, Jean Maynard, Pittsfield Arts Club, Malaka Russell, Patricia Skaling, Brenda Stevenson, Madeline Stevenson, Waldo County Education Association, Elizabeth Whalen

In memory of Evelyn Springer: Robert S. Beattie, Ronald E. Bessey, Ronello Brown, Sandra Carson, Sarah Chipman, Ronald & Georgie Farrin, Mr. & Mrs. Richard Godfrey, Lovejoy Health Center, Mary McCormick, William H. Richardson, Lillian Rivers, Persis Smith, June Wheeler, Margaret Witham
In memory of Willard Lehr: Ronald E. Bessey, Helen Cianchette, Mr. & Mrs. Ival Cianchette, Louise Dow, Mr. & Mrs. Frank Homstead, Mr. & Mrs. Elwin Littlefield, Marilyn Lloyd, Mr. & Mrs. George Newhouse,

In memory of John Corrigan: Connie Corrigan

In memory of Irene Sweet: Crisis & Counseling Centers, Linda Thornton

In memory of Liz Crocker: Mr. & Mrs. James F. Crocker

In memory of James Harold: Mrs. Constance Harold

In memory of Elizabeth Oliver: Audrey Keeley

In memory of Bud Susi: Mr. & Mrs. Joseph Loring

In memory of Clyde Roach: Barbara V. Roach

Gifts-In-Kind

Mr. and Mrs. Jason Allen, CM Almy, Angler's Restaurant
 Mr. and Mrs. N. Blake Bartlett, Mr. and Mrs. Scott L. Carter
 Mr. and Mrs. James Christie, CML Services, Mrs. Rebecca Geagan, Mrs. Tanya Kingsbury, Mr. Bruce LaVallee-Davidson, Macy's Department Store, Mrs. Susan Mendell, Northeastern Environmental Services, Mrs. Alice Patterson '48 - In memory of husband Ed and son Eddie, Mr. and Mrs. Dale S. Penney, Mrs. Deborah Rozeboom, Mr. Ed Webster, Dr. and Mrs. Paul K. West, Mr. Gerry Wright

Matching Gifts

Ameriprise Financial
 Matching Gift of Elizabeth Cianchette '73
 Verizon Foundation
 Matching Gift of Daniel and Brenda Breton

CLASS AGENTS

Class of 1936

Evalene Pendexter White
46 Jones St
Madison, ME 04950-1525

Class of 1937

Betsey Libbey Williams
429 Heather Rd
Orem, UT 84097-2253
(801) 235-9105

Class of 1939

Ervena Frederick Belcher
61 Draper Ave
Mansfield, MA 02048-1350
(508) 339-1481

Class of 1942

Arlene Frederick Beardsley
3215 Canal Dr
Pompano Beach, FL 33062-3305
(954) 946-0734

Class of 1944

Helmi Paakki Perry
11 Pine St
Dexter, ME 04930-1126
(207) 924-7024
helmi214@midmaine.com

Class of 1946

Donna Hodgins Graham
19 Wood St
Nashua, NH 03064-2352
(603) 889-0330
djg1227@mycidco.com

Class of 1947

Alice Wright Fitts
371 Ell Hill Rd
Palmyra, ME 04965-4016
(207) 487-6938

Phyllis Frederick Luke
345 Saco St. Unit 16
Westbrook, ME 04092-2073
(207) 781-2489

Class of 1948

Arey Bryant
18 School St
Pittsfield, ME 04967-1313
(207) 487-2454

Elizabeth Coolidge Whalen
elizajack@webtv.net
922 Ohio St Apt 314
Bangor, ME 04401-3080
(207) 947-4090
elizajack@webtv.net

Class of 1950

Virginia Coolbroth Landry
49 Roosevelt Ave
Waterville, ME 04901-4927
(207) 873-2662
ginoland@gwi.net

Class of 1951

Sally Cianchette Dwinell
38619 White Dr.
Zephyrhills, FL 33540

Alice Fitts Ross
334 Stinson Street
Pittsfield, ME 04967
(207) 487-5273

Class of 1952

Beverly Turner Breau
364 Ell Hill Rd
Palmyra, ME 04965-4015
(207) 487-2483

David McGaffin
118 Nichols St
Pittsfield, ME 04967-1612
(207) 487-2522

Class of 1953

Catherine Doyle Mooers
PO Box 52
Manchester, ME 04351-0052
(207) 622-2586
k.mooers@juno.com

Class of 1954

Terrie Dean Clark
3 Dewey St. #B
Hampden, ME 04444-1409
(207) 862-4731
tclark12a@tds.net

Class of 1955

Leona Cross Lovely
824 W Ridge Rd
Cornville, ME 04976-6210
(207) 487-3252
lovelyleona1937@yahoo.com

Class of 1958

Roy Pomeroy
5311 Highgate Grn
Williamsburg, VA 23188-6370
(757) 565-2914

Class of 1959

Nancy Ross Cameron
PO Box 302
Newcastle, ME 04553-0302
(207) 563-2574
nanrosscam@mindspring.com

Class of 1960

Joan Basford Bradley
25 Basford Rd
Detroit, ME 04929-3002
(207) 257-4955
Momjone@aol.com

Rachel Fields Fleming
RR 3 Box 1532
Lincoln Cntr, ME 04457-9520
(207) 794-2711

Marilyn Nash
145 E Sierra Madre Blvd Apt 4
Sierra Madre, CA 91024-2560
(626) 355-8410
marilynannenash@aol.com

Class of 1961

Linda Mercier Marson
29 Duncan Rd
Augusta, ME 04330-5905
(207) 622-0278
lbmar04@gwi.net

Class of 1962

Peter Redfern
3 Highland Pnes
Scarborough, ME 04074-8741
(207) 883-8723
Predfern@maine.rr.com

Class of 1963

Wayne Pinkham
5616 Chinook Ct
Flowery Br, GA 30542-2776
(770) 967-2229
wpink1288@aol.com

Class of 1964

Barbara Vigue Day
61 North St
Hartland, ME 04943-3727
(207) 938-3565

Class of 1965

Richard Gould
16 Ledgewood Rd
Framingham, MA 01701-3667
mjrich95@aol.com

Charlene Buzzell Lowe
122 Tolman St
Westbrook, ME 04092-4430
cblowe413@aol.com

Gale Pomeroy Russell
3433 Waters Ave.
Suffolk, VA 23434
(757) 925-0098
galey-girl@mymailstation.com

Class of 1966

Anna Maria Parker
5 Cheehaak Rd
Freeport, ME 04032-6122
(207) 865-2028
amp@suscom-maine.net

Class of 1967

Sheilya Cookson Voter
519 Troy Rd
Burnham, ME 04922
(207) 948-2184
dsvoter@gmail.com

CLASS AGENTS

Class of 1968

Sharon Hanson Ringuette
32 Lincoln St
Gardner, MA 01440-2247
(978) 632-2468
sringuette@juno.com

Class of 1970

David England
15 Tomahawk Cir
Saunderstown, RI 02874-2111
(401) 295-5147

Class of 1971

Hunter Friend
PO Box 69
Pittsfield, ME 04967-0069

Class of 1973

Susan Smith England
15 Tomahawk Cir
Saunderstown, RI 02874-2111
(401) 294-3679
surf7073@cox.net

Class of 1974

Vera Lloyd Bryant
21 Greeley St
Pittsfield, ME 04967-1447
(207) 487-2751
verabryant@excite.com

Class of 1975

Kevin Bryant
21 Greeley St
Pittsfield, ME 04967-1447
(207) 487-2751

Class of 1976

Donald Hallenbeck
107 Ryan St., Apt. 202
Pittsfield, ME 04967-1468
(207) 487-2254
photoman_Flash@yahoo.com

Class of 1977

Susan Williams Ouellette
RR 1 Box 2788
Pittsfield, ME 04967-9763
(207) 487-6127
swo@gwi.net

Class of 1978

Rose Tozier Grattan
127 Ryan St. Apt. 102
Pittsfield, ME 04967-4162
(207) 487-5280

Robert Stackhouse
56 Somerset Ave
Pittsfield, ME 04967-1314
(207) 487-6629

Class of 1979

Trudi Bickford Ames

RR 1 Box 3414
Pittsfield, ME 04967-9734
(207) 487-3493
clause@midmaine.com

Ann Cianchette Ball
255 Main St
Cumberland, ME 04021-3646
(207) 829-2779
anncball@yahoo.com

Class of 1980

Belinda Lawrence Sterling-LaFlamme
124 Halifax St
Winslow, ME 04901-6937
(207) 872-2331
nbcsterling@gwi.net

Class of 1981

Suzanne Lynch Guild
34 West St
Manchester, ME 04351-3418
(207) 623-9404

Mary Raynes
3563 SE Pine St
Hillsboro, OR 97123-7751

Class of 1982

Nancy Bertrand Shorey
11 Henry St
Pittsfield, ME 04967-1307
(207) 487-5953
dnshorey@verizon.net

Class of 1983

Ann MacLauchlan Manian
4873 Halwell Dr
Virginia Bch, VA 23464-8418
(757) 467-2132

Charice Ouellette Sullivan
8 Drew Rd
Somersworth, NH 03878-1402
crazyknits@aol.com

Class of 1984

Tracy Goodridge
120 Airline Rd
Clifton, ME 04428-6001
(207) 843-5617
tgoodridge@earthlink.net

Patricia Cianchette Skirnick
762 Concord Point Dr.
Perryville, MD 21903-2565
(910) 382-6175
newyeargrl66@hotmail.com

Class of 1985

Jennifer Quint Dow
40 Peltoma Ave
Pittsfield, ME 04967-1633
(207) 487-6929
jenniferdow@dialmaine.com

Class of 1986

Lisa Nickerson
114 Madawaska Rd
Palmyra, ME 04965-4034
(207) 938-2109
luna@tdstelme.net

Class of 1987

Michael Clapp
12109 Beeflower Drive
Lakewood Ranch, FL 34202
(207) 474-2553
mike@incubatorquotient.com

Class of 1988

Loren Lavalie Martin
60 Birchdale Rd
Concord, NH 03301-8435
(603) 715-1194
lorenjmartin@comcast.net

C.J. Mitchell
39 Grey Meadow Dr
Burlington, VT 05408-1319
(802) 951-8690
cj_mitchell@idx.com

Class of 1989

Lisa Cook Madore
78 Summer St Apt 1
Oakland, ME 04963-4522
(207) 465-3496
lisa_madore2000@yahoo.com

Class of 1990

Thomas Bertrand
125 S Main St
Pittsfield, ME 04967-1624
tbertrand@mci-school.org

Class of 1991

Nanette Farrin Ardry
29 Peltoma Ave
Pittsfield, ME 04967-1630
(207) 487-6056
nanetteardry@verizon.net

James Richards
2563 Moody Ave
Orange Park, FL 32073-5957
(904) 470-7959
richardsjnl@yahoo.com

Class of 1992

Laura Norris
34 S Mentor Ave Apt 200
Pasadena, CA 91106-2922
(626) 484-4960
lobonorris@aol.com

Class of 1993

Justin Wiles
16 McNally Ter
Newport, ME 04953-3145
(207) 487-3852
juicewiles@yahoo.com

CLASS AGENTS

Class of 1994

Emily Walker Anderson
711 Ward Hill Rd
Troy, ME 04987-3020
(207) 948-3884

Class of 1995

Lisa Salley Erhardt
15 Chapel Rd
Orono, ME 04473-4202
(207) 866-2151
lerhardt@asa-adams.u87.k12.me.us

Class of 1996

Jodi Cummings McGary
245 Hamilton Terrace
Pittsfield, ME 04967
jodi92478@yahoo.com

Class of 1997

Stephanie Vigue McLean
PO Box 291
Pittsfield, ME 04967-0291
smclean@wildblue.net

Class of 1998

Jason Cummings
267 Melba St. #21B
Milford, CT 06460
JCummings@gfacademy.org

Class of 1999

Nancy Cavanaugh
653 N Creek Rd
Greenfld Ctr, NY 12833-1108
(815) 527-8598
zhania333@aol.com

Class of 2000

Hillary Stevens
7 Manson St.
Pittsfield, ME 04967
(207) 487-5630

Class of 2001

Daniel Flaherty
280 Lower Road
Appleton, ME 04862
(207) 785-4487
dflaherty@camdennational.com

Class of 2002

Alisia Melvin
26 Sokoklis Cir
Topsham, ME 04086-1615

Class of 2003

Ashley Holt
454 Winnecook Rd.
Burnham, ME 04922

If you are interested in becoming a Class Agent, please contact the Alumni Office via phone at (207) 487-5915 or email at alumni@mci-school.org.

In Memoriam

The Alumni/ae Office has been notified of the passing of these members of the MCI Family:

M. Jean Crawford '36
Edythe White Small '38
Phyllis Baker Wright '38
Maynard Ames '39
Mildred Merrithew Monahan '39
Victor V. Burnheimer '40
Irene Elizabeth Ames Whitman '41
Phyllis Starbird Bickford '43
Elizabeth Plummer Simonson '45
George K. Millett '50
Walter F. Mooers '50
Leola Dahlgren Gray '51
Janette Madden Bragdon '52
George R. Cray '52
Emma A. Frederick '52
Sharee Dinsmore Fitton '71
Patricia Payelian
Lawrence Dysart
Linwood Jones

Our deepest condolences go out to the families and friends of those who have passed on.

The Alumni/ae Affairs Office Tries its very best to accurately record the names of alumni/ae and friends who have passed away. Please contact our office at (207) 487-5915 about the passing of alumni/ae or friends of MCI, particularly those which occur outside our local news area.

Ensuring The Future

AS Maine Central Institute continues our mission of providing a rigorous, comprehensive educational program to a multicultural student body, a key to our continued success will be support from alumni/ae and friends through the Heritage Society of planned giving. The Society has been established to recognize and honor donors who have generously provided, or plan to provide, gifts to Maine Central Institute through bequests, trusts, life insurance policies and other life income gifts. For more information, please call us at (207) 487-5915.

The Importance of Your Membership

With your financial help and membership in the Heritage Society, we will be able to continue to provide our students with an enriched educational experience. We will ensure that your investment is used wisely for scholarships to deserving students, securing first-rate educators, effectively using technology to improve teaching and learning, and maintaining the physical infrastructure of our irreplaceable campus. Your generous gift will ensure the continuity of our institution for many generations to come.

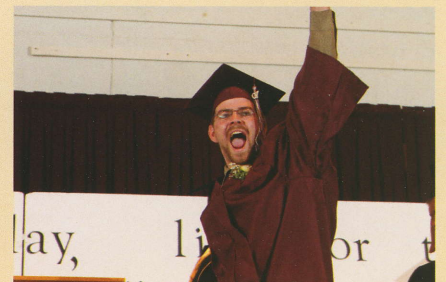
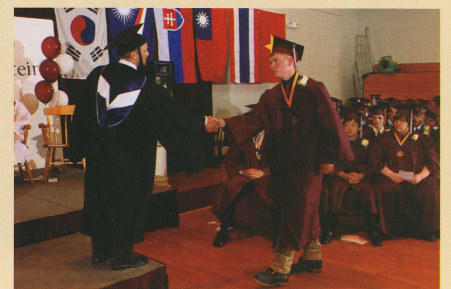
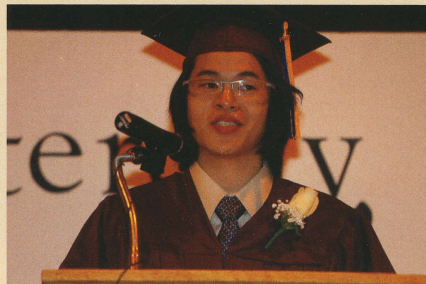
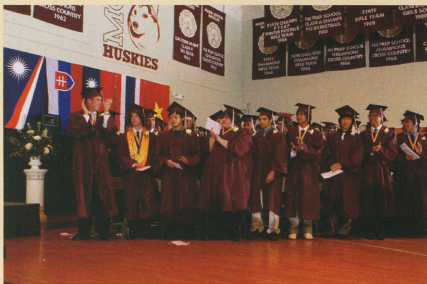
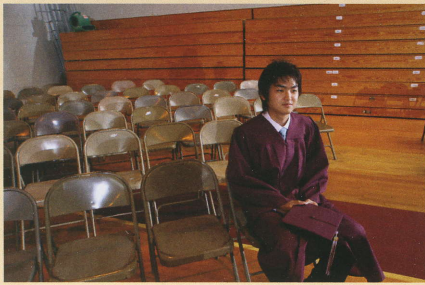
Becoming a Member

Becoming a member of Maine Central Institute's Heritage Society is quite simple. In fact, if you have named MCI in your will, or have otherwise included our institution in your estate plans, you already *are* a member. If you have not yet notified us of your bequest, please contact our Office for Institutional Advancement today to inform us of your decision, so that we can add your name to the Society honor roll.

Benefits of Membership

Heritage Society members enjoy benefits which include:

- All members who enroll will be listed as charter members of the Heritage Society.
- A special plaque with the names of all Society charter members will be displayed in a prominent location on the MCI campus.
- Regular receipt of the *Legacies* planned giving newsletter.
- Invitation to an annual recognition and appreciation dinner hosted by the Head of School.



Congratulations Class of 2007!

Save The Date!

March 15, 2008
Alumni Reception
Sugarloaf

March 27, 2008
Alumni Reception
Marco Island, Florida

March 29, 2008
Alumni Reception
North Redington Beach, Florida

April 19
Alumni Reception
The Belvedere
Boston, Massachusetts

May 3, 2008
Annual Dinner Auction



MAINE CENTRAL INSTITUTE

295 MAIN STREET
PITTSFIELD, MAINE 04967
www.mci-school.org

Address Service Requested

NON-PROFIT
STATUS
PRSRT STD
U.S. Postage
PAID
Farmington, ME
Permit No. 30

If there is an error in your address, please accept our apology. We request that you notify the Office of Institutional Advancement of any changes. Thank you.