

ALUMNUS



Towards a Sustainable
MAINE CENTRAL INSTITUTE

SNO-BALL, MRS. TANYA KINGSBURY, THE HUSKY HUT, MRS. ROSA-LIE WILLIAMS, MR. JOE VEILLEUX, WRIGHT GYM, MR. PAUL LEGGE, SNOW SCULPTURES, BAND & CHORUS, MRS. LECNA HASELINE, ATHLETICS, MS. LYNN HANCOCK, WEYMOUTH, MANSON HALL, MR. EARL ANDERSON, CREATIVITY, MR. ED MILLER, KEY CLUB, ALUMNI HALL, HOME COMING, MR. ROD SMITH, J.W. PARKS GOLF COURSE, POST GRADUATES, MR. DEAN NEAL, DRAMA, MR. DOUG CUMMINGS, TOOKIE RUSSELL, FOUNDERS HALL, PRIZESPEAKING, MR. JOHN JANA, EXCELLENCE, MR. RONALD BESSEY, RIFLE TEAM, FRIENDSHIP, PARKS GYM, MR. EDWARD STANLEY, MR. AL CARD, ROWE HALL, MANSON ESSAY, MR. BLAKE BARTLETT, BOSSOV BALLET, MR. NORBERT YOUNG, HUSKY PRIDE

What do you think of when you hear the letters

MCI?

Giving Categories

Headmaster's Society	\$20,000+	Rowe Society	\$500 - \$999
Weymouth Society	\$10,000 - \$19,999	1866 Society	\$250 - \$499
Founders Society	\$5,000 - \$9,999	Alumni/ae Society	\$100 - \$249
Manson Society	\$2,500 - \$4,999	Husky Circle	\$1 - \$99
Trustee Society	\$1,000 - \$2,499		

MCI needs your support now more than ever!

This year's school theme is *Sustainability*, and I'm writing to ask for your help to maintain MCI's financial sustainability.

As the national and world economies slowly recover, the impacts on MCI have been significant. Through careful budgeting and prudent resource management, the school remains in solid financial shape. However, in order to protect educational programs, this year we were unable to give salary and wage increases to faculty and staff; health care costs and other employee benefits continue to increase; and like other schools, our endowment suffered and is only now beginning to recover.

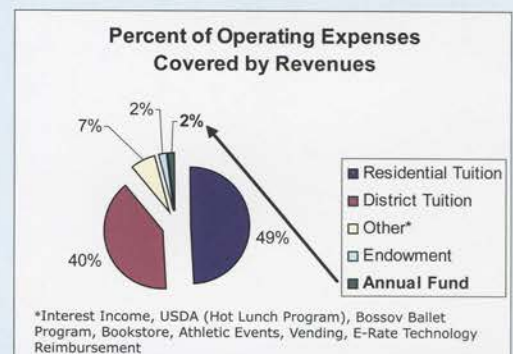
The pie chart illustrates the imminent need to increase the Annual Fund revenues to support the annual budget. Remember that the Annual Fund underwrites a broad range of day-to-day school operations such as: salaries and wages, building maintenance, technology upgrades, campus beautification, textbooks, classroom supplies, student activities, student transportation...and the list goes on.

Despite the economy, there's much to celebrate at MCI! Using the remaining funds from the Dining Commons bond, we've upgraded the energy efficiency of several buildings—for instance, new windows were installed in Alumni Hall, the roofs on Parks Gym and Founders Hall were replaced (and the bell tower restored!) and several faculty apartments were renovated. The road between Weymouth and the library is now pedestrian-only, and there is a new parking lot beside the music building. Much progress, but there is more to accomplish moving forward.

Maine Central Institute is faring exceptionally well in large part because of the support we receive from you through the Annual Fund. In order to be Financially Sustainable—to continue the excellence towards which we are striving—we need your help! Please consider making a gift by June 30, 2010 to the 2009-10 Annual Fund. We very much appreciate your loyalty to MCI!

Sincerely,
Christopher J. Hopkins
Headmaster

MCI FINANCES AT A GLANCE 2009-10 Operating Budget: \$7.7 million



MAINE CENTRAL INSTITUTE
295 MAIN STREET
PITTSFIELD MAINE 04967
www.mci-school.org
(207) 487-3355

Board of Trustees 2009-2010

Norbert Young, Jr. '66, President
David Fortin, Vice President
Michael Savage '62, Treasurer
William Ball '63
N. Blake Bartlett
Paul Bertrand '59
Brenda Breton
Sally Smith Bryant '61
Tania Rogers Carnrick '73
James Christie '85
Randall Clark
Peter Fendler '80
Lewis Fitts, III '78
Anthony Frederick '59
Tania Winsor Hannon '65
Robert Hayes
Dean Homstead '69
Gary Liimatainen '78
Rick McCarthy
Robert Menucci '64
Betty Lou Mitchell
Col. John Mosher '83
Gregg Newhouse '81
Gregg Patterson '69
Valerie Sinclair '67
Carolyn Smith
Scott Carter '73, Immediate Past President
Bob Downs, ex officio
Michael Gallagher, ex officio

Alumni Association Executive Committee

Ralph Damren '64, President
Clint Williams '86, Vice President
Alice Shaw Patterson '48, Treasurer
Bette Bagley '54
Thomas "Skip" Chappelle '58
Paul Bertrand '59
Milton Webber '71
Thomas Quint '73
Ralph "Buddy" Ingraham '75
Craig Littlefield '77
Susie Reynolds Furrow '81
Nancy Bertrand Shorey '82
Michelle Vigue Hodgins '91
Nicole Cianchette Steeves '99
Jennifer Voter Beane '97, MCI Director of Alumni Affairs,
ex officio

Editors: Jennifer Voter Beane '97, Todd Nadeau
Associate Editor: Sharon Savasuk
Photographers: Larry Ayotte, Jennifer Beane
The *Alumnus* is published twice yearly for alumni/ae,
parents and friends of Maine Central Institute. Please
send address corrections, new phone numbers or
updated email addresses to the Office of Institutional
Advancement.
Phone: (207) 487-5915
e-mail: alumni@mci-school.org

Visual Cover Editor: Jill Schvartz, MCI Instructor of Art

Letter from the Headmaster

Dear MCI Family,

As you see from the cover of this edition of the *Alumnus*, one quite different from past covers of the Founders Hall bell tower or the Student Garden, the school community is focusing on Sustainability this year as the 2009-10 theme (last year's, as you'll recall, was Citizenship).



We've had two noteworthy Patterson Lecture Series Speakers address the school already, former Maine governor Angus King and neighboring Unity College's president Dr. Mitchell Thomashow. Thanks to the generosity of a trustee (i.e., the same one who supports our lecture series!), the school has acquired ten Old Town canoes, a ten-place trailer, paddles and life preservers which will allow classes and recreational groups to get out into the surrounding waterways to study and explore, the Student Council is planning a Sustainability Theme Week in February, energy efficient lights and windows are being installed in campus buildings... There's more we're doing to celebrate the theme, and you'll see some of it within the pages of this magazine.


Students and adults are exploring all aspects of Sustainability. John Payelian, the school's new and first-ever Sustainability Coordinator and the person responsible for the revival of the Student Garden, urges all to think of Sustainability in three spheres: Globally, Communally, and Individually. Energy conservation and recycling are important, but so too are managing finances responsibly, kindness and concern for self and others, political awareness, and community service.

An important part of Maine Central Institute's Sustainability is your continued loyalty, support and pride. I share all of this with you and am grateful for the way it perpetuates the call to excel which is driving us forward every day here at school.

Sincerely,

Christopher J. Hopkins

Christopher J. Hopkins

This issue of the *Alumnus* was printed by  Snowman
PRINTING

Graduation ~ May 31, 2009



Class Marshalls Ross Hammond and Joanna Lira



Lydia Fortin and Jin Cho, recipients of the Masters Cup & the Faculty Cup



Headmaster Christopher Hopkins



Tom Bertrand '90 hands out scholarships to Rachael Kelley and Elizabeth Lessard



Valedictorian Linh Hoai Nguyen addresses her class



Commencement Speaker Arnold Shorey '85



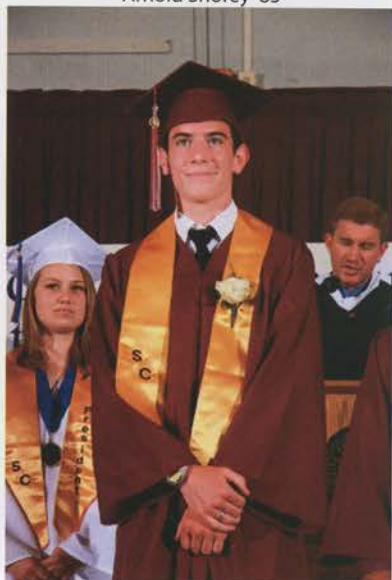
Jim Hornor hands out a scholarship to Sando Yin



The Class of 2009 sings the MCI School Hymn



Vanessa Hathaway receives her diploma



Nate Olsen waits to receive a scholarship

Class of 2009



Kristy Huff, Lydia Fortin, Nick Miller, Brandon Wilson and Brandon Wright wait to be presented with scholarships.

Recipients

CM Almy Scholarship - Vanessa Hathaway
A.R.T.S. (Always Ready to Serve) Club, Pittsfield - Hanh Hong Nguyen
Tammy Bodwell Memorial Scholarship - Alecia Lambert
Peter Bradshaw Memorial Scholarship - Libby Newhouse
Anne '55 and Frank '55 Bowen Scholarship for Athletes - Lydia Fortin & Nicholas Miller
Bud's Shop-N-Save Scholarship - Emily Schank
Burnham Extension Scholarship - Chelsea Albert & Heather Mea
Joseph P. Cassidy Science Scholarship - Cassie Walston
A. Cline and J. Lovely Memorial Scholarship - Thomas Collier
Cook Music Fund - Alecia Lambert
Elizabeth Crocker Memorial Scholarship - Macie Peterson
Cummings Leadership Award - Dong Jin Cho
George Damren Memorial Scholarship - Binh Quoc Nguyen
Christopher Dionne Memorial Scholarship - Andrew Shorey
Hazel & Maurice Earle Integrity Award - Tam Thi Minh Pham
Hazel & Maurice Earle Memorial Scholarship - Bao Quoc Phung
Elks Lodge #2713 Scholarship - Kristin McCormick
Norval B. Lewis English Award - Hanh Hong Nguyen
Sebasticook Valley Federal Credit Union - Heather Mea
Myrtle Main Sherman French Award - Donhathai Sutassanamarlee
Garden Club, Pittsfield Botany Award - Monique McNichol
Gladys Gleason Award - Nicholas Miller
Good Cheer Club, Detroit - Arielle Maloon
Gordon Construction Corp. Scholarship - Brooke Libby
Grange (Pittsfield) Award - Brandon Wilson
Whitney Brynne Hammond Memorial Scholarship - Katherine Vanadestine
Hancock Lumber Scholarship - Thomas Collier
Maurice Hatch Memorial Scholarship - Andrew Shorey
Hospital Auxiliary, Sebasticook Valley - Nataliya Ovchar

SCHOLARSHIP RECIPIENTS

Thank you to all of the alumni, parents and friends of MCI who have established and /or contributed to scholarships for our students.

Ike and Stella Huff, Girls HS Basketball Scholarship - Kristy Huff
Inspiration Award - Caroline Slymon
Teresa Poulin Kane Memorial Scholarship - Libby Newhouse & Andrew Shorey
Kiwanis Ideals Award - Nataliya Ovchar & Andrew Shorey
Greater Pittsfield Area Kiwanis Scholarship - Lydia Fortin, Kristy Huff, Libby Newhouse & Rachel Ross
Margaret Kohler-Havey Scholarship - Brooke Libby
Libby Family Endowment Scholarship - Rachael Kelley
Blaine Littlefield Memorial Scholarship - Ross Hammond & Andrew Shorey
MCI Dean's Residential Leadership Award - Dong Jin Cho
MCI Football Boosters Scholarship - Brandon Wilson
MCI Key Club - Joanna Lira & Rachel Ross
MCI Soccer Boosters Scholarship - Megan Leibowitz & Nathaniel Olsen
MELMAC Richard W. Tyler Principals Scholarship - Olivia Perkins
Mitchell Scholar - Alecia Lambert
Roderick & Rosella Morrison Memorial Scholarship - Andrew Shorey
Rowena & Marshall Nash, Sr. Scholarship - Elizabeth Lessard
Howard Niblock Scholarship - Elizabeth Lessard
George M. Parks Scholarship - Calvin Kersbergen
George M. Parks (Valedictorian) - Linh Hoai Nguyen
Edna Reed Pittsfield Tuesday Club - Emily Lanzikos
Reny Charitable Foundation - Dong Jin Cho, Hanh Hong Nguyen & Tam Thi Minh Pham
DJ Richards Memorial Fund - Sarah Nadeau
SAD 53 Association - Nicholas Miller, Libby Newhouse, Rachel Ross & Andrew Shorey
Josh Sawyer Memorial Scholarship - Brandon Wilson
Skowhegan Savings Bank Business Scholarship - Rachel Ross
SRVC Culinary Arts Customer Appreciation Award - Monica Bennett
SRVC Cooperative Education Outstanding Student Award - Kristin McCormick
SRVC Carpentry Instructor Award - Donovan Carbonneau
SRVC Scholarships - Holly Hamilton & Kristin McCormick
SRVC DGA Extra Mile Scholarship - Thomas Collier
SRVC Linwood and Betty Turcotte Family Scholarship - Sarah Nadeau
Student Council Award - Lydia Fortin & Kristy Huff
Robbie Tibbetts Memorial Scholarship - Monica Bennett
Wright Family Scholarship - Lydia Fortin, Brooke Libby, Olivia Perkins, Emily Schank & Brandon Wright

College Acceptances for the Class of 2009



Alfred University, Arizona State University, Babson College, Bates College, Beal College, Becker College, Binghamton University, Bluefield College, Boston College, Boston Conservatory, Boston University, Brooklyn College, Butler University, Champlain College, City Univ. Of NY, Clark University, Clarkson University, Colby College, Columbia College Chicago, Cornell University, Drexel University, Eastern Maine Community College, Eastern Nazarene College, Elmhurst College, Elmira College, Emmanuel College, Emory University, Empire Beauty School – Bangor, Eugene Lang, Fashion Institute of Design and Merchandising, Fisher College, Franklin Pierce College, Gordon College, Harvard University, Hesser College, Hobart and William Smith College, Hunter College, Husson University, Indiana University, Iowa State University, Jacobs University in Ger-

many, Johnson & Wales University, Johnson State College, Keene State College, Kennebec Valley Community College, Kings College, Korean College, Lake Forest College, Laselle College, Liberty University, Long Island Univ. - C.W. Post, Maine Maritime Academy, Marymount Manhattan, Messiah College, Michigan State University, New England School of Communication, New England Tech., New Hampshire Institute of Art, New York University, North Carolina State, Northeastern University, Ohio State University, Pace University, Penn State, Penn State-University Park, Pepperdine University, Purdue University, Rochester Institute of Technology, Rutgers University, Saint Anselm College, Saint Michael's College, San Francisco State, Simmons College of Arts & Sciences, Southern Maine Community College, Southern New Hampshire University, St. Joseph's College, Suffolk University, SUNY – Albany, SUNY – Buffalo, SUNY-Westbury, Susquehanna University, Syracuse University, The Ohio State University, Thomas College, Towson University, Tulane University, Umass-Boston, Univ. of Illinois @ Urbana-Champaign, Univ. of Minnesota - Twin Cities, University College of Bangor, University of Cincinnati, University of Connecticut, University of Delaware, University of Findlay, University of Georgia, University of Hartford, University of Idaho, University of Maine – Farmington, University of Maine – Fort Kent, University of Maine – Orono, University of Maine – Augusta, University of Maine – Machias, University of Maryland, University of Mass.-Amherst, University of Missouri, University of New England, University of New Hampshire, University of Pennsylvania, University of San Francisco, University of Southern Maine, University of Vermont, University of Washington, University of Washington-Seattle, UTI (Universal Technology Institute), Valencia Community College, Virginia Inst. of Technology, Washington College, Western State College of Colorado, Winthrop University

Class Statistics

Class of 2009 graduates who are:

Attending college or technical school	81 %
Entering the workforce	16 %
Serving our country in the armed forces	3 %

School News

Students Receive National Academic Recognition



Bridget Connolly '10

Bridget Connolly '10 was recently named a Commended Student in the 2010 National Merit Scholarship Program. About 34,000 Commended Students throughout the nation were recognized for their exceptional academic promise. Though they will not continue in the 2010 competition for National Merit Scholarships, Commended Students placed among the top 5 percent of more than 1.5 million students who entered the competition by taking the 2008 Preliminary SAT / National Merit Scholarship Qualifying Test.



Calvin Kersbergen '10

Calvin Kersbergen '10 earned an AP Scholar Award in recognition of his exceptional achievement on his 2009 AP exams. The College Board's Advanced Placement Program® provides motivated and academically prepared students with the opportunity to take rigorous college-level courses while still in high school, and to earn college credit, advanced placement or both for successful performance on the AP Exams. About 18 percent of the nearly 1.7 million students worldwide who took AP Exams performed at a sufficiently high level to earn an AP Scholar Award. The following members of the Class of 2009 also received Scholar Awards for the AP Exams they took in 2009: Dong Jin Cho, Brooke Libby, Libby Newhouse, Bin Nguyen, Hanh Nguyen, Linh Nguyen, Natalia Ovchar, Tam Pham and Zhan Wang.



Faculty members Jared Foster, Heidi Cook and Adam Pomeroy in front of the new canoes

MCI Receives Canoes for Faculty and Student Use

Thanks to the generosity of MCI Trustee Gregg Patterson '69 and his wife, Elaine, as well as wonderful support from the Old Town Canoe Company, MCI now has ten canoes, twenty-eight paddles, thirty-four life preservers and a canoe trailer. The canoes will be used by students, faculty and staff for environmental and other science classes as well as for recreational use as the school grows the outdoor program. Of the gift, Patterson said "I believe in the 'Chautauqua Experience,' that is the 'mobile university.' The canoeing creates a bond of sweat between people which reduces distance between them and eases communications. The gift was not about canoeing as much as creating an opportunity for bonding and reflecting."

MCI Holds Another Successful Community Service Day

On Wednesday, November 25th MCI held its third all-school Community Service Day. Projects included yard work, trash pick-up, painting, winterizing, and other activities for area non-profit organizations and residents. More than 500 students, faculty and staff participated in projects at the Pittsfield Food Pantry; the Pinnacle; the Pittsfield Nursing Home; Manson Park, Warsaw and Vickery Schools; Hawthorne and Fendler Parks residential homes and other locations. The day continued MCI's long-standing tradition of community service.



Ashley Kitchin '12 and Paula Arias '12 help out at the Pittsfield Food Pantry



Garth Stockwell '12 and Sara Bennett '12 promote JMG at the 2009 Activity Fair

Jobs for Maine's Graduates (JMG) at MCI

Gregory Fortier has been hired as the Specialist for Maine Central Institute's new Jobs for Maine's Graduates (JMG) program. JMG is a private non-profit organization founded in 1993 that partners with Maine high schools and middle schools "to identify students who face barriers to education, and to guide each one on to a successful path toward continued education, a meaningful career, and productive adulthood." The program currently serves 3,500 students in more than 60 school programs across the state. Fortier will be a part of MCI's Human Development Department, teaching three JMG classes for freshman and two JMG classes for sophomores. Some of the topics that the classes will cover are résumé building, financial literacy and community service learning. The students will also visit job fairs and college campuses and will work closely with area businesses to educate the students about job training and career opportunities in the state of Maine.

College Board and MCI Team Up to Bring Mandarin Chinese Courses to Campus

In August, MCI welcomed Jia Cheng "Jackie" Chen as its first instructor of Mandarin Chinese. Chen was chosen to represent China in the Chinese Guest Teacher Program through a highly competitive application process conducted by Hanban, China's Office of Chinese Language Council International, and the College Board. The College Board places Chinese Guest Teachers into American high schools that have been chosen for their proven excellence in language study and their willingness to host qualified teachers from China. This year two-hundred American high schools were chosen by the College Board to serve as host institutions. Currently there are eighteen students in Chen's classes.



Jackie Chen in his classroom

NEW FACES AT MCI

MCI welcomes a talented group of faculty and staff for the 2009-10 school year

ASSOC. DEAN OF ADVANCEMENT



Kelly Dodge, a 1983 graduate of Colby College, has joined MCI as Associate Dean of Advancement. Kelly worked over 15 years in sales and marketing, then returned to Colby, working in the

Advancement Office there for 10 years. He held various positions including Major Gifts Officer and Director of Annual Giving.

ASSOC. DIR. OF ALUMNI AFFAIRS



Kristin Hersey, a 2006 graduate of the University of Maine, is the new Associate Director of Alumni Affairs. Kristin was a Sergeant in the Army National Guard from 2001-2008 and was most recently at the Pentagon planning

events and hosting high-level foreign delegates and dignitaries during their visits to the U.S. under the direction of the Secretary of Defense. She was also the recipient of the Maine Army National Guard Soldier of the Year Award in 2006.

DIR. OF INFORMATION TECH.



David Roy is the new Information Technology Director at MCI. Dave received his bachelor's degree in Electrical Engineering from the University of Maine. He joins MCI after twenty-three successful years working for the Maine Public Broadcasting Corporation. His most recent post at MPBN was Director of Internal Technology but he also served as the MPBN Director of Telecommunications and Planning as well as being the Chief Engineer.

MATH INTERN



Stephen Badgley is a 2009 graduate of Kenyon College where he received his BA degree in Mathematics and was a member of the Pi Mu Epsilon Mathematical Society. As the math intern, Stephen teaches

Alegebra I and II as well as Geometry. He also helps as a dormitory supervisor in Rowe Hall.

JMG JOB SPECIALIST



Gregory Fortier is a 1971 graduate of the University of Southern Maine with a BA in History and has worked in education for more than 30 years. He has organized student leadership experiences,

mentoring programs and facilitated student workshops across the state throughout his career. He teaches three JMG classes for freshmen and two for sophomores.

SUSTAINABILITY COORDINATOR



John Payelian was hired as a faculty member in Environmental Science at MCI in 1997. Though he isn't a new face on campus, he has assumed a new role. As the Sustainability

Coordinator, he will raise environmental awareness among students, faculty, and staff, integrate sustainability practices into all aspects of school life and operations, and reduce MCI's environmental impacts.

ASSISTANT PG BASKETBALL COACH



Jeff Schoenle graduated from Purdue University in West Lafayette, Indiana with a bachelor's degree in Social Studies Education in 2006 and a master's degree in Recreation and Sport Management in 2009. During

his undergraduate years, he was a student assistant for the men's basketball program. As a graduate student, he coached high school basketball at Fountain Central and Frontier. Jeff is the Assistant Postgraduate Basketball Coach.

CHINESE LANGUAGE INSTRUCTOR



Jia Cheng "Jackie" Chen is a 2005 graduate of Yunnan University in China where he majored in English Literature. He came to MCI from the Qujing Normal University in Qujing, Yunnan Prov-

ince. Jia Cheng teaches two Mandarin Chinese courses at MCI as well as a course on Chinese culture.

SCIENCE INTERN



Michele Harpster is a 2009 graduate of Gettysburg College where she received her BS degree in Chemistry with a minor in Mathematics. At Gettysburg, Michele did significant research in developing chemical

polymers that could be used in dentistry and orthodonture. As the new science intern, Michele teaches the 9th grade Earth and Space science course.

RESIDENTIAL DIR., MANSON HALL



Kirsten Pomeroy is serving as Residential Director of Manson Hall. A 2006 graduate of the University of Maine at Farmington (UMF) with a BS degree in Community Health, Kirsten has a variety of experience

working with youth. At MCI, Kirsten continues to work with the Peer Leader program and organize student activities for residential students in addition to her role as Residential Director.

ENGLISH INTERN



Anna Steim is a 2009 graduate of Harvard University where she received her BA in English and American Literature and Language with a citation in Latin. At Harvard, Anna served as a Research Assistant for the English Department and she was an Associate Editor for *Let's Go Publications, Inc.* Anna is the English intern and she is a dormitory supervisor in Alumni Hall.

Planet ~ Community ~ Self

Sustainability at MCI

At the first all employee meeting before the opening of school, Headmaster Chris Hopkins asked the assembled faculty and staff for their definitions of sustainability, this year's school theme. The task was surprisingly difficult. After some discussion, it became apparent that the school's definition of sustainability would be broad and would encompass three overarching categories -- Planet, Community and Self.

The definition therefore covers more than the readily apparent issues involved with sustainability such as energy conservation and recycling. MCI is also exploring what it means to be a sustainable individual, a sustainable community, and is even looking at the fiscal sustainability of MCI as an institution.

The theme was determined back in the spring after Mr. Hopkins requested input from students, faculty and staff. "There was a tremendous response and a majority of it suggested ideas surrounding the theme of sustainability" he said. By summertime, MCI began several initiatives not only to support the theme but also to allow the school to plan for a sustainable, secure future.

The roof and bell tower of Founders Hall were renovated (see story pg. 12). At the same time, the roofs on both Parks and Wright Gymnasium and the windows in the girl's dormitory, Alumni Hall, were replaced. The renovations will aid in energy conservation and decreased maintenance costs.

John Payelian, who taught environmental science at MCI for many years, came out of retirement and became MCI's Sustainability Coordinator. Mr. Payelian works very closely with faculty, staff and students to coordinate recycling efforts. With the help of Mr. Payelian and his students, the school now recycles nearly 100% of all materials and leftover consumables from the dining hall. Mr. Payelian, who created the student garden eight years ago, has also been working to improve and

enlarge the current space. This year the organic garden provided the dining hall with eight bushels of potatoes and fifteen bushels of winter squash.

The Patterson Lecture Series is bringing speakers to campus to present on themes surrounding sustainability. Former Governor Angus King was the first speaker this year, beginning his October 16th presentation to the school by stating that "sustainability is based on the Maine idea that if you borrow something from somebody, give it back to them in as good or better shape than you got it... It's the same deal with the planet. We have the planet on loan. We have borrowed it from past generations and future generations. We have to give it back to the next generation in as good as or better shape than we found it." Gov. King then spoke to the students about the ten things he wished someone had told him when he was in high school. The list was a collection of life lessons and tips to help sustain oneself as an individual.

Dr. Mitchell Thomashow, the President of Unity College, in Unity, Maine, spoke on December 2nd. He told the students about growing up in New York in the 1960's and the beginning of the environmental movement. Dr. Thomashow likened the opportunities and challenges then to what the world is facing currently and he asked the students to think about what their life will be like in the future. He explained there are many new "green" jobs and educational opportunities that the students should consider but that we can all start living more sustainably right now by looking at our daily behaviors and working to make MCI fully sustainable. "There are a lot of threads that tie my life in 1964 to your life right now. It's a really important time for you. Environmental issues that started to emerge when I was your age are really important right now and will be your future. The more you can learn about them, the more you can step up, the better life I think you will have."



Mr. John Payelian and his recycling team



Former Governor Angus King shakes hands with Brittney Glencross '11 during his Patterson Lecture Series presentation demonstrating the importance of making a good first impression



Dr. Mitchell Thomashow talks with students after his presentation

MCI has completed several initiatives thus far in the effort to become a fully sustainable institution but there is still a great deal to be done. Though sustainability is the official school theme only for this year, the programs, presentations and activities experienced at MCI will resonate with the students, faculty and staff and continue on campus and in their own lives well into the future.

MCI 2010-2015 STRATEGIC PLANNING PROCESS



Colleagues, Alumni, Trustees, Parents, Students, Perspective Students, Parents and Friends of MCI:

Maine Central Institute has embarked on an 18 month process to brainstorm, develop, and publish the 2010-2015 strategic plan to fulfill our school mission and continue to meet the needs of our aspiring students from around the world. MCI will be guided by the goals and objectives outlined in the strategic plan which will ensure students graduate from MCI with a strong educational and social background and go on to many future successes as leaders and contributors to their communities.

With the assistance of the Administrative Team, we have selected eleven different areas of our school to research and enhance to guide our strategic plan. Led by faculty and trustee co-chairs, each subcommittee is comprised of faculty, staff, students, trustees, parents, and community members who are spending the fall months drafting recommendations to be part of the strategic plan.

Throughout the spring of 2010, our Board of Trustees as well as the entire MCI community will provide feedback on the draft of the strategic plan. The subcommittees will provide a final version of recommendations to the co-chairs in late spring, and our goal is to publish the 2010-2015 strategic plan in June of 2010 following our June board meeting. After approval from the Board of Trustees, the Administrative Team will work steadily to implement the recommendations from the subcommittees and work toward achieving the strategic plan goals over the next five years.

The work of the subcommittees thus far has been truly exemplary. The dedicated individuals serving on these subcommittees have offered innovative ideas which will help shape the future of MCI. Please let us know if you have any questions as we move forward with the strategic planning process, *Producing Sustainable Excellence*, throughout the next several months.

Sincerely,
Co-Chairs of the 2010-2015 Strategic Planning Process

Jason Judd
Director of Academic and Career Planning

David E. Fortin
Vice President, MCI Board of Trustees

STRATEGIC PLAN: *PRODUCING SUSTAINABLE EXCELLENCE*

STRATEGIC PLAN SUBCOMMITTEES

Academics
Admissions
Advancement
Co-Curricular Activities
Community Relations
Faculty / Staff
Finance
Governance
Post-Secondary
Student Life
Technology

TIMELINE

Spring 2009

The MCI Administrative Team met to determine the eleven subcommittee areas, the timeline for the strategic plan, and to discuss the makeup of each subcommittee. The strategic plan co-chairs surveyed the faculty / staff, trustees, students, and parents to determine the makeup of each subcommittee. Co-chairs for each subcommittee were chosen, and the subcommittees were each given a charge to begin the process. The subcommittees had two meetings before the end of school in June.

Summer 2009

The members of each subcommittee researched, collaborated, and brainstormed during the summer months, so the subcommittee members could be adequately prepared for the fall meetings.

Fall 2009

The subcommittees are meeting at least bimonthly to draft the recommendations. The co-chairs are working to ensure the subcommittees are progressing successfully and that each group are producing appropriate recommendations.

Winter 2010

Each subcommittee will give their recommendations to the co-chairs. The co-chairs will present the recommendations to the Board of Trustees in February.

Spring 2010

The board will provide feedback to each of the subcommittees. The subcommittees will meet to make the final recommendations for the 2010-2015 strategic plan. The co-chairs will present the final draft of the strategic plan at the June board meeting.



"I serve on the Community Subcommittee and have found out many wonderful things that MCI does in an effort to build a stronger relationship with our community as we continue to develop further strategies to make this relationship the best it can be."

~Scott Giallombardo '00, Faculty Representative for the Community Subcommittee

"I think student input is a very important part of strategic planning; it gives a fresh outlook on the community and will help with success of the overall plan."

~Ben Glidden '10, Student Representative for the Technology Subcommittee



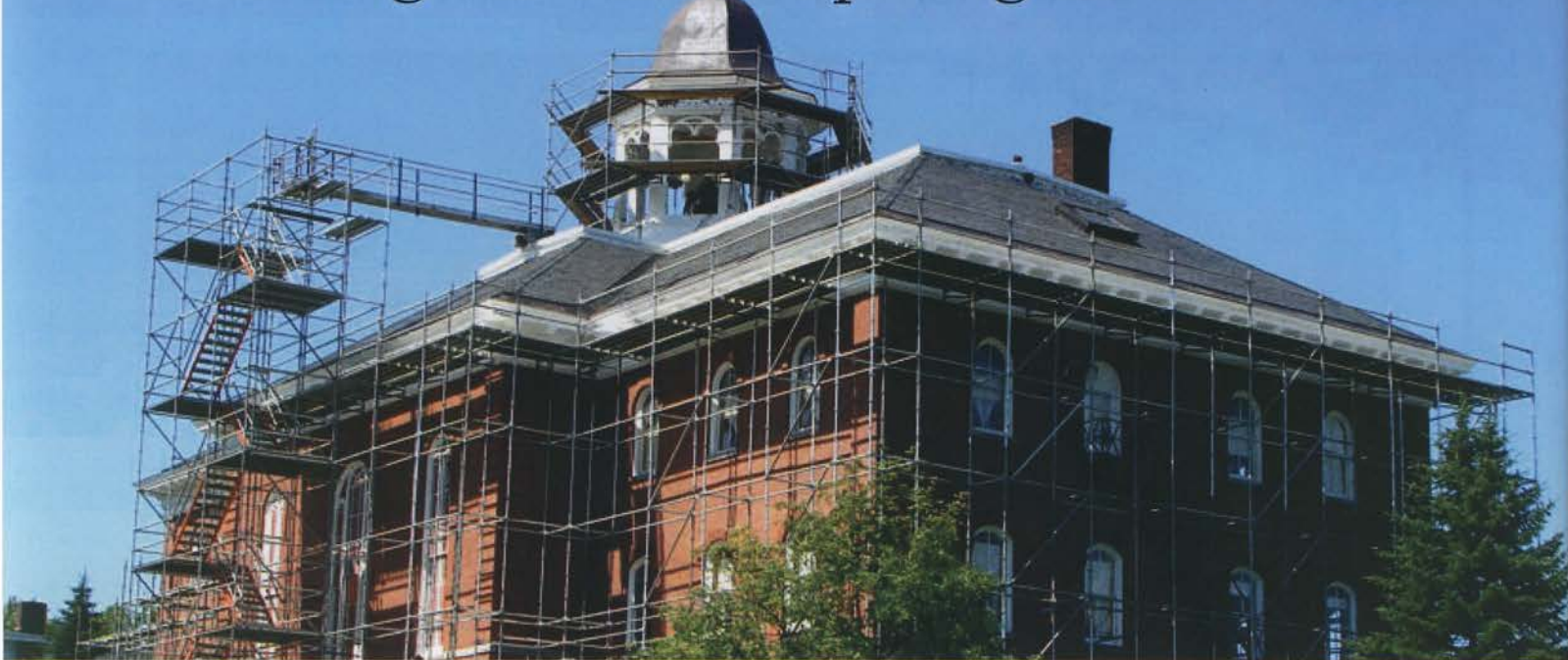
"By bringing such a diverse group together to work on a plan for the future of MCI, you get a great feeling of where we're at and where we have been. The view is more dynamic and hence the ideas that are being talked about for sustaining our strengths and improving our school are beyond what any of us could have imagined individually."

~Renee Ashton, MCI Faculty Representative for the Technology Subcommittee

"I am on the Student Life Subcommittee, and we have come up with some great ideas to bring the school and town communities together to make MCI an enjoyable place for everyone! Our group is an advocate for all students, and our main objective is to ensure that each individual feels a sense of belonging by creating a positive environment here at MCI!"

~Claire Kerr '11, Student Representative for the Student Life Subcommittee

Preserving the Past, Preparing for the Future



For over 140 years, Founders Hall has been a fixture of MCI's campus, welcoming students, faculty, staff and friends into its halls. The cornerstone of Founders, or the "Institute Building" as it was then known, was laid in 1868 marking the first of MCI's official buildings. Though MCI was founded in 1866, classes were actually taught in public halls and private homes until 1869.

By 1869 the building was erected and the lower story was complete. The plans called for more work on the second floor including a 47 by 65 foot chapel and fifteen other "commodious recitation, library and society rooms."¹ The first term held in Founders was in the summer of 1869. By the fall, MCI had 130 students.

The bell itself wasn't installed in the tower until 1877 and bears the inscription: *Maine Central Institute, 1877, Presented by H. Warren Lancey* and includes the quote: "Knowledge is Better than Gold."

Though it is hard to imagine today, students and faculty used the outdoor privy until it was replaced with interior bathrooms in 1891. Electric lights were installed in the classrooms in 1897.

Even though the building was remarkably well constructed, 140 years had taken their toll. By the winter of 2008, the roof and bell tower were in dire need of repair. The original slate shingles were deteriorating and falling dangerously from far above. The wood in the bell tower was rotting and in danger of crumbling. Because of the danger of falling ice, snow and shingles, Cianbro and Northeastern Scaffolding Services built temporary entranceways to protect students, faculty and staff.

However, though the need to fix Founders was there, the money wasn't. MCI examined the limited options and in the spring of 2009, it was determined that the school could use

available funds from a bond issued in August 2007 for the construction of MCI's new Student Center.

Work began rapidly and by the fall of 2009 the renovations were complete. Interior structural work was done to reinforce the beams and rafters in the attic which support the roof. The deteriorating slate shingles were replaced with a recyclable polymer composite which looks identical to the original slate, drastically reduces the weight of the roof as well as the maintenance needs, and eliminates the danger of falling ice and snow. Aside from a fresh coat of paint and reinforcement work on the tower, the bell tower roof was re-covered with 392 galvanized aluminum panels.

When the construction company was fixing the bell tower, they discovered a small wooden board tucked into the beams in the roof. A message, written in pencil, said "This is to certify that E.B. Weymouth and D.Y. Rines put up this ceiling in the bellfry January 7 & 8th in the year 1869."



Weymouth's and Rines' names written on the board found in the bell tower roof

In addition to the board, the workers found several crushed tin cans that were used as tiles on the roof. Because the roof was last covered at the beginning of the second world war when there was a shortage of metal, the workers substituted coffee cans for the tiles.

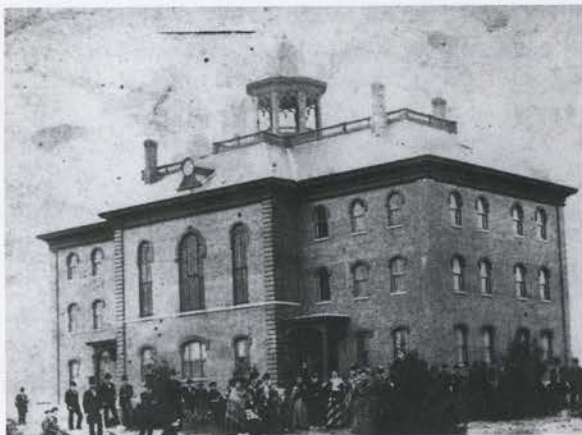
It is because of the amazing value added to the MCI experience by pieces of history like these that the school works so diligently to preserve the historic buildings on campus. Founders was added to the National Register of Historic Places in the State of Maine in October of 1980. No matter what decade you first entered the halls

¹ Cook, Sanger. *Pittsfield on the Seabcook*. pg. 52.

or heard the bell ring, given the school's theme of sustainability, the latest renovations will allow the bell to ring far into the future.

Interesting Fact...

Though MCI hired an outside construction company to fix the roof and bell tower on Founders, MCI's carpenter, Sherman Cookson, replicated the eight arch supports, complete with the original fleur-de-lis, as well as the railings around the tower itself using an 1877 picture of the building for historical accuracy.



Founders Hall circa 1877



Sherman Cookson with a partial arch replication



The refurbished bell tower with arch replications and railings

YOUNG ALUMNI EVENTS

Calling all young alumni! MCI is beginning a Young Alumni Program to help young alumni keep in touch with each other and MCI. If you are interested in attending and / or helping to coordinate a young alumni event in your area, let us know! Email Kristin Hersey at khersey@mci-school.org, text her at 207-416-4665 or become a fan of MCI on Facebook.



BOSTON - November 17, 2009

L to R: Hunter Nichols '07, Lori Celeste '08, Jason Judd, Tammy Pham '09, Johann Nunez-Kemp '03, Rebecca Laube '09, Emmy Chung '08, Dustin Varney '07, Natalie Kirkham '09, Scott Giallombardo '00 and Bao Phung '09 in Boston

L to R: Bao Phung '09, Emmy Chung '08, Johann Nunez-Kemp '03 and Scott Giallombardo '00 in Boston



L to R: Natalie Kirkham '09, Rebecca Laube '09, Jason Judd, Lori Celeste '08 and Hunter Nichols '07 in Boston

L to R: Lori Celeste '08, Hunter Nichols '07 and Kristin Hersey in Boston



NEW YORK - November 23, 2009

L to R: Jin Cho '09, Jong Ha Lee '09, Declan Galvin '06 and Jason Judd in New York

Where are they now?

Whether they live 2 miles or 2000+ miles from MCI, alumni are doing great things. Below are four “snapshots” of alumni then and now.



Archie Tracy '60

Archie came to MCI as a post graduate earning All New England Prep Basketball Honors in 1960. After MCI, he received a Masters Degree in Education from Southern Connecticut State University and went on to become a teacher, coach, and athletic director at a high school in CT. In the mid-1980's, Archie left teaching and began working in real estate investing full time, at one time owning and managing 1250 apartments in Houston, TX. Archie now develops and manages several self storage facilities, and other commercial properties in TX and CT. On October 9, 2009 Archie was inducted into the New England Basketball Hall of Fame as a result of his athletic achievements at MCI.



Jill McGowan '78

After MCI, Jill studied German and International Affairs at UMaine Orono. After working at a variety of jobs, she decided that her real passion was design and decided to return to school. At age 29, Jill attended the Fashion Institute of Technology in New York City. She interned and worked in the apparel industry on 7th Avenue and then worked at the Hathaway Shirt Factory in Waterville, Maine. Working at Hathaway inspired her to launch her company, Jill McGowan, Inc. Jill's mission was and continues to be to integrate the quality and integrity of men's shirts into a women's line of clothing and make durable, timeless apparel. She has been in business for 15 years and sells to retail stores around the country and Canada. Her sister, Jolene McGowan '76, is her business partner and handles sales and public relations and her husband, David Hembre, is also an active partner and architect.



Jessica Bane Robert '86

Jessica is currently completing a mixed-genre memoir about growing up off the grid in a log cabin built by her father in the woods of Maine. A selection from this manuscript won the 2007 Editor's Choice Prize for the Writecorner Press Poetry Contest; others were anthologized by Outrider Press. A prose piece currently appears in David Gessner's journal, *Ecotone*. And her first volume of poetry entitled *Scarred Seasons* is forthcoming. She currently teaches literature and writing courses at Clark University in Worcester, Massachusetts where she resides with her family.



Jethro Ferguson '92

After graduating from MCI in 1992, Jethro attended Middlebury College in Vermont where he studied Pre-Architecture and was a member of the Midd football and basketball teams all four years. Jethro moved to New York City after college and began his career in advertising, first as an Account Executive with Ammirati Puris Lintas Digital and later with Ogilvy Interactive, where he continues to work today. While working full-time, Jethro also earned his MBA from New York University's Stern School of Business in 2003. In 2006, Jethro was transferred to Ogilvy's London office to head up the American Express International Digital business. He was subsequently promoted to Managing Partner, Head of Digital for the UK, which is the position he holds today.

Norbert Young, Jr. '66 is MCI's New Board President



Norbert W. Young, Jr. '66 assumed the role of President of the MCI Board of Trustees on July 1, 2009, taking over from Scott Carter '73. Scott was Board President from 2007-2009. During his tenure as President, Scott was instrumental in the search for and hiring of Headmaster Chris Hopkins. He helped MCI to complete successfully the 2.5 million dollar campaign for the Donna Leavitt Furman '41 Student Center. Scott served on numerous committees and was the chair of the Buildings and Grounds Committee for many years.

Norbert is currently the Managing Director of Duck Cove Associates, LLC (DCA), a Maine-based consulting services company. DCA provides strategic planning, business development, and business transformation services for growth-oriented clients. The company leverages Norbert's 40 years of experience and understanding of the design and construction industries in the U.S. and internationally. He is also serving on Cianbro's Board of Directors as an Outside Director and Special Advisor. Prior to forming Duck Cove Associates, Norbert was president of the information and media business division of McGraw-Hill Construction, a McGraw-Hill Company. In recognition of his generous support for MCI, Norbert was inducted into the MCI Hall of Fame in 2007.

Of becoming Board President, Norbert said "In June 2009 it was a real honor to become President of MCI's Board of Trustees. I

have known MCI and Pittsfield for my entire life - growing up as a faculty child. But never has the relevance and power of an MCI educational experience been more critical to the future and I dare to say that MCI has never been better positioned to deliver. This is due to many factors but driven clearly by the dedicated faculty and staff - top to bottom - and the amazing talent of each student - local, state, national, and international - each responding in their own way.

In six short years, MCI will celebrate its 150th birthday as an independent school. I have found in business that strategy and vision are really driven by clarity of mission; ability to communicate that mission simply; and finally finding the delicate balance that focuses all the resources to the mission in the midst of all the unending demands."

Sonia Call Bartlett '55 Scholarship Recipient Chosen



Carolyn Wheeler '11 and her mother, Priscilla, drove to MCI last March from Ballston Lake near Saratoga Springs, New York. Now fifteen and a high school junior, Carolyn was seven when she started on the long "road to excellence," as MCI's Andrei Bossov, Artistic Director of Bossov Ballet Theatre, calls the journey from fledgling dancer to professional ballerina. The market for dancers is competitive. Teachers and schools offering meaningful and valid training coupled with an outstanding academic program are few and far between and difficult to find. The Wheeler family had looked at many. Carolyn had trained in summer programs at the Harid Conservatory and the Houston Ballet School, among other prestigious programs, but it was the Bossov Program at MCI that best offered the combination of stringent ballet training plus a solid education.

program] were lovely and made me realize how behind she is at fifteen," Mrs. Wheeler wrote in a letter to Bossov Ballet Theatre dated the Monday following their weekend visit. But Andrei Bossov and Natalya Getman, the two Bossov teachers who had a look at Carolyn's abilities during her March audition, were quick to respond that Carolyn's potential is strong and that dancers who arrive here in need of top grade training are the norm. "What impressed me most," Mrs. Wheeler continued, "was that Natalya honed right in on the areas that I knew were Carolyn's weaknesses. Even from my own non-ballet background what she said made so much sense to me."

Carolyn's family had big decisions to make quickly if they were to help Carolyn realize her dreams.

Sonia Call Bartlett '55, a fan of Bossov Ballet Theatre, and her husband, N. Blake Bartlett, a longtime member of the MCI faculty, and now a trustee, requested that upon her death donations in lieu of flowers be made to found a ballet scholarship for a deserving and qualified MCI student. As a result, generous donations from Maine to Florida to California came from Sonia's many friends, most of whom are MCI alumni including

a special friend from New York City and a friend of MCI from Saratoga Springs, New York.

The Bartlett family designated the award for a new MCI student, enrolling in the fall of '09, who demonstrated both the need and the potential. Carolyn was selected as the scholarship's first recipient. The \$2,650 scholarship covers the cost of taking the entire ballet course offered by Bossov, both during school and after school hours for one year.

Now a member of MCI's Class of 2011, Carolyn contrasts her experience at MCI with her former high school where there were 800 students in her class alone. Carolyn has made high honors thus far this school year and is an A student. She auditioned for and was cast in Bossov's performance of *The Nutcracker*. All indications are that Carolyn is made of the stuff that can make a ballerina. Of Carolyn, Andrei Bossov says, "She works hard. She has good physical abilities. I have no problem with her. She must develop these skills and abilities everyday." Carolyn says she will - and is.

Sonia would be proud.

"The dancers we saw [at MCI in the Bossov

Thank you to our generous donors who helped us raise **\$17,700 for Music, Athletics, Student Council and Key Club!**

Auction 2009

MCI Through the Years



DONORS

Anglers Restaurant; Awards, Signage & Trophies; Bangor Daily News; Belgrade Canoe & Kayak; Bert's Driving School; Best Western-Waterville; Big Bill's; Bossov Ballet Theater; Bud's Shop 'N Save; Buen Apetito; Burky & McCarthy; Dr. Preston Carter '62 & Dr. Elizabeth Carter; Scott Carter '73; Champions Sports Club; Clinton Golf Course; Cookson's Auto Body; Country Creations; Country View Golf Club; Sassy Styles; Cyr Northstar Tours; Details/Jean Bradshaw '83; Christine Dopson; Dubious, Inc.; Donn Fendler '44; Peter Fendler '80; Flagship Cinema 8; David & Tracye '81 Fortin; Foxy Hair Designs; Framewright; Framemakers; Kelli Frost '77; Frost's Mobil Service; Garden Island Cleaners; Polished; Generations The Salon; Governor's Waterville; Tania '65 & Cy Hannon; Hydrograss Corp.; Harpswell House; Heidi-Ann's Flower Shop; Chris & Suzanne Hopkins; Dr. & Mrs. David Hop-

kins; Houston Brooks Auctioneers; Huff Forest Products; JW Parks Golf Course; Kelly-Smith Printing; Kleinschmidt Associates; Len & Robyn LeGrand; Levesque Pool & Spa; Loretta's; Mad Hatter Fine Foods; Eileen Hornor; Maggie's Bloomers; Maplecroft Farm; Marden's; Margit's Studio; Frank McGrady; MCI Athletics Department; McMann's Service Center; Merrill Merchants Bank; Millennium Bridal; Miller Signs & Graphics; Monica's Naturally; Moosehead

Furniture; MSAD 53/MCI Music Boosters; Movie Gallery; Todd Nadeau; National Hockey League Players' Assoc.; New Hampshire Fisher Cats; North Country Rivers; Ocean Point Inn; Pittsfield Cedar Products; Pine Tree Basketball Clinic; Portland Sea Dogs; Lakewood Theater; Railroad Square Cinema; Dr. Flint Reid; Republic Jewelry; Saddleback Maine; Paula Salley; Mike '62 & Cilla Savage; Sally Savage; Seabcook Valley Federal Credit Union; Skowhegan Savings Bank; Carolyn Smith; Khano Smith; Staples Oil Company; Starbuck's; TD Banknorth; The Theater at Monmouth; TJ's Jewelry; Turner Sporting Goods; Vic Firth, Inc.; Walpole Manufacturing; Ramona Washington; Waterville Opera House; Mary Webber; Milton Webber '71, Mike Wiers, Esq.; Yard Goods.

CASH DONATIONS

CM Almy; Meridian Masonic Lodge of Pittsfield; Mike '62 & Cilla Savage; Norbert '66 & Christine Young; Paul Bertrand '59; Bob Menucci '64; Tania '73 & Doug Carnrick

GIFT IN KIND DONATIONS

Michael & Debra Doore; Dena Hall; Lori Glidden

The MCI Alumni Association would like to thank the following supporters:



Borislow Insurance
Benefit solutions with a personal touch

C.O. BECK & SONS
ROOFING & SHEET METAL CONTRACTORS

CYR NORTHSTAR TOURS



Harvard Pilgrim Health Care

Merrill Bank
A division of People's United Bank

Snowman PRINTING

Hall of Fame and Distinguished Achievement Award



Blake Bartlett
inducted by
Norbert Young, Jr. '66,
President, MCI
Board of Trustees



Alice Shaw Patterson '48
inducted by Patrick Patterson
'68 and Todd Nadeau on behalf
of Gregg Patterson '69



Persis Smith
inducted by
Douglas Cummings, former
MCI Headmaster



Mary Ellen LaBarge
Fletcher and Ken Fletcher
accepted on behalf of Bill
LaBarge '67 inducted by
Ralph Damren '64, Alumni
Association President



The MCI Board of Trustees President addresses the
Hall of Fame Ceremony attendees



Norbert Young '66 shakes hands with Blake Bartlett
while Michelle Hodgins '91 applauds



Sally Bryant '61, Judy Chapman '64 and Susan
England '73 with their mother, Persis Smith



Alice Patterson '48, Shirley Bryant, Buddy Ingraham
'75, Patrick Patterson '68 and David England '70

Reunion



Class of 1959



Class of 1969



Class of 1954



Philip Theriault '59



Class of 1960



Kaye Mooers '53 and Gerry Wright
singing the school hymn at the
Reunion Luncheon



Ralph Damren '64, Presi-
dent of the MCI Alumni
Association, welcoming
alumni to the Reunion
Luncheon



Tookie Russell and Sophia Kellis '59

Weekend



Norbert Young, Jr. '66 and
Leo McEvoy '40



Members of the Class of 1979



Terrance McGowan '59 and Faye
Bickford '66



Dennis '59 and Earla Haggerty



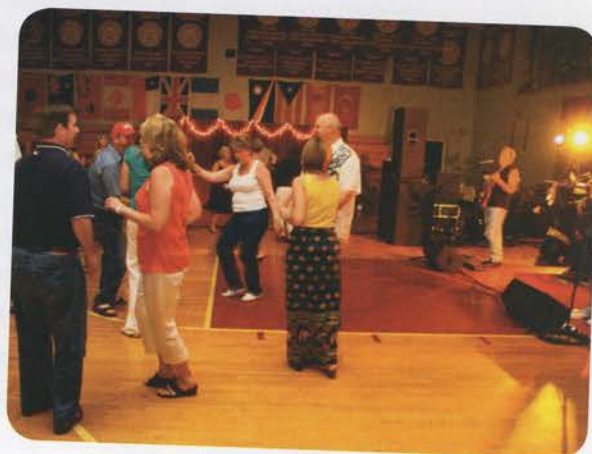
Tony '59 and Marilyn Frederick



Ginny Palmer, vocalist with the
Al Corey Orchestra



The Eightysomething Band at the
Saturday evening gala dinner



Alumni enjoying
The Eightysomething Band

Annual Fund ■ July 1, 2008-June 30, 2009

Donor Category List

Head of School Society (\$20,000.00 +)

Cianbro Corporation
Mr. Garret Cole
Mr. and Mrs. Gregory Patterson
Elbert Prince Estate
Mr. and Mrs. Michael Savage
Mr. Norbert Young, Jr.

Founders' Society (\$5,000.00 +)

Mr. David Campbell
Mr. and Mrs. Stephen Collier
ConocoPhillips
Korean Parents
Mr. and Mrs. Robert Libby
Mr. and Mrs. Thomas Savage
Mr. Milton Webber

Manson Society (\$2,500.00 +)

Mr. Michael Ames
Mr. Paul Bertrand
Frank and Anne Bowen
E. W. Leonard, Inc.
Mrs. Tania Hannon
Mr. Bradley Miller
Mr. and Mrs. Roger Percival
Reny Charitable Foundation
Peter and Carole Vigue

Weymouth Society (\$1,000.00 +)

Mr. and Mrs. William Ball
Mr. N. Blake Bartlett
Peter and Sally Bryant
Mr. and Mrs. Weston Bubar
Ms. Elizabeth Calise
Douglas and Tania Carnrick
Mr. and Mrs. Scott Carter
Mrs. Cynthia Crocker
Mr. and Mrs. Michael Dow
Mr. and Mrs. Robert Downs
David and Susan England
Mr. Peter Fendler

Mr. and Mrs. Anthony Frederick, Jr.

Mr. Thomas Gordon
James Gould and Page Talbott
Mrs. Donna Graham
Hancock Lumber
Mr. Richard Hartford
Mr. Dean Homstead
Christopher and Suzanne Hopkins
Mr. Jong Sung Kim
Mr. and Mrs. E. Robert Kinney
Mr. and Mrs. Robert Knowles
Suk Kung Ko
Mr. and Mrs. John Leonard
Mr. Robert Menucci
Col. John Mosher
Mr. and Mrs. Robert Perry
Linda Shorey

Rowe Society (\$500.00 +)

Troy and Elbe Barker
Mr. Richard Berry, Sr.
Mrs. Sylvia Bubar
Mr. James Christie
Evelene Cianchette Estate
Mr. and Mrs. Ival Cianchette
Mr. and Mrs. Robert Cianchette
Douglas and Lori Cummings
Mr. and Mrs. Lewis Fitts III
David and Tracye Fortin
Mr. Richard Gordon
Mr. and Mrs. Dennis Haggerty, Jr.
Michael and Michelle Hodgins
Mrs. Sallie Huot
Mr. Gary Liimatainen
Mr. Michael Lynch
James and Ellen MacMichael
Mrs. Jean Maynard
Mr. Donald McDougal
Medela Inc.
Thomas and Martha Mourkas
Reverend Thomas Niblock
Ms. Anna Maria Parker
Edward and Susan Ryman
Mrs. Carolyn Smith

WABI TV 5

Ms. Liza Watts
Mrs. Rosalie Williams
Mrs. Nancy Wilson

1866 Society (\$250.00 +)

Mr. and Mrs. Alexander Agostinelli
Mr. and Mrs. Earl Anderson
Mr. and Mrs. Timothy Archibald
Mrs. Lancy Bradshaw
Mrs. Brenda Breton
Douglas Clapp and Jana Morra
Mr. and Mrs. Ralph Damren
Mr. and Mrs. Robert Desjardins
First Baptist Church of Pittsfield
Mr. Darrell Goodridge
Russell and Dena Hall
Mr. Ronald Kinney
Mr. Neil Larochele
Mr. and Mrs. Robert Leibowitz
Mr. and Mrs. David MacGown
Maine Community Foundation
Mrs. Andrea Mann
Mr. James Maynard
Frank and Karen McGrady
Mr. Malcolm Meikle
Mrs. Susan Mendell
Mr. and Mrs. Thomas Millett
Mr. Dalen Mills
Senator Betty Lou Mitchell
Mr. Todd Nadeau
Miss Marilyn Nash
Mr. David Pattee
Mr. Michael Payne
Ms. Karen Peck
Mr. Wayne Pinkham
Pittsfield Community Garden Club
Edward Porter and Karin O'Donnell
Ms. Nancy Quint
Nicholas and Nancy Sander
Herschel and Valerie Sinclair
Mrs. Persis Smith
Mr. and Mrs. Frank Tredinnick III
Verizon Foundation
Mr. Gerry Wright

Alumni/ae Society (\$100.00 +)

Mr. and Mrs. Richard Allen
Mr. and Mrs. Charles Armstrong
Mrs. Adrienne Ashbaugh
Adrian and Sherrie Badger
Mr. and Mrs. Phillips Baird
Joseph and Karoldene Barnes
Mr. and Mrs. Leo Belanger
Mr. and Mrs. Richard Berry, Jr.
Mrs. Sylvia Berry
Mr. Ronald Bessey
Mrs. Delia Bickford
Mr. Dennis Bickford
Mrs. Nancy Billings
Mr. Frank Blanchard
Mrs. Olive Blodgett
Mrs. Joan Bradley
William and Jean Bradshaw
Mrs. Joan Bradstreet
Mr. Foster Brooks
Daniel and Pamela Brooks
Mr. and Mrs. Edson Buker
Mr. Bradley Cahill
Mrs. Nancy Cameron
Mrs. Jessica Cardenas
Mrs. Jean Carnes
Harold and Sandra Carson
Mrs. Jean Carter
Mr. and Mrs. Thomas Chappelle
Mrs. Barbara Charlamb
Mrs. Marie Chase
Mr. Robert Chase
Miss Sarah Chipman
Mr. and Mrs. Mac Cianchette
Mr. Randall Clark
Mrs. Jeannine Cloutier
Mr. and Mrs. Phillip Coffin
Capt. Nicholas Craig
Mr. and Mrs. Eugene Cropley
Dr. and Mrs. William Cunningham
John and Louise Dow
Elks Lodge 2713
Mrs. Mary Emerson
Fidelity Charitable Gift Fund

Annual Fund ■ July 1, 2008-June 30, 2009

Donor Category List Cont.

Mr. Stanley Fletcher
 April Gardiner
 Karen Getchell
 Mr. Adolph Gingras, Jr.
 Dr. Roger Ginn
 Mrs. Madelyn Given
 Mr. Marvin Glazier, Esq.
 Mr. Gary Goodrich
 Mr. Ernold Goodwin, Jr.
 Mr. Theodore Grant
 Mr. Kenneth Hallee
 Mr. and Mrs. James Hammond
 Mr. Ashley Hart
 Dr. John Hartleb
 Dr. Susan Haseltine
 Mr. and Mrs. Robert Hayes
 Dr. and Mrs. Paul Houston
 Mr. and Mrs. Floyd James
 Ms. Carole Kaufmann
 Mrs. Margit Kuhlmeier
 Mr. Sherman Lahaie, Jr.
 Ronald and Jill Lambert
 Mrs. Virginia Landry
 Mr. and Mrs. Wayne Lawton
 Mr. and Mrs. John LeMieux
 Mr. and Mrs. Milton Lindholm
 Mr. Walter Littlefield
 Mrs. Laurie Loosigian
 Mr. and Mrs. Rick McCarthy, Esq.
 Mr. and Mrs. Michael McCready
 Terrance and Janet McGowan
 Mr. and Mrs. Ronald McGowan
 Mrs. Maxine Mittelstadt
 Mrs. Catherine Mooers
 Mr. and Mrs. David Mosher
 Mrs. Helen Mosher
 Mr. Leonard Nemon
 Mrs. Rita Norton
 Mr. and Mrs. Peter Oliver
 Fred and Crystal Olsen
 Mrs. Martha Overlock
 Dr. and Mrs. Michael Parker
 Mr. and Mrs. Lester Parkhurst
 Mr. Louis Pepin

Mr. and Mrs. Robert Pickett
 Pittsfield Tuesday Club
 Mrs. Sandra Powers
 Mrs. Mary-Lou Pray
 Mr. and Mrs. Thomas Quint
 Mrs. Heather Read
 Mr. and Mrs. Peter Redfern
 Mr. and Mrs. David Reifschneider
 Major Royce Rich
 Mr. Ronald Risciotti
 Mrs. Julia Rodenbeck
 Mrs. Deborah Rozeboom
 Mrs. Malaka Russell
 Dr. Lisa Sauer
 Mr. Matthew Scott
 Mrs. Rosalie Shaw
 Mrs. Judith Simonton
 Michael and Patricia Skaling
 Skowhegan Area High School
 Stephen and Valory Slymon
 Mr. and Mrs. Sterling Smith
 Matthew and Donna Stein
 Mr. Peter Susi
 Mrs. Ellen Sylvia
 Target
 William and Lorna Taylor
 William and Jean Tedesco
 Ms. Hannah Teichmann
 Mr. Wayne Tilton
 Mr. and Mrs. Frank Tredinnick, Jr.
 Larry and Margaret Veilleux
 Mark Vining and Christopher Recklitis
 Mr. and Mrs. Richard Waite
 Mrs. Lucille Webber
 Mrs. Elizabeth Whalen
 Mr. Leigh White
 Mr. Bruce Williamson
 Mr. Brandon Wilson
 Mr. and Mrs. Tom Winsor
 Mr. and Mrs. Stanley Wyman
 Mr. Kenneth Yanco

Husky Circle (\$1.00 +)

Miss Chelsea Albert
 Mr. James Allen

Mr. Jason Allen
 Mr. and Mrs. Laurence Allen, Jr.
 Mrs. Sheila Allinson
 Mr. Perino Almonte
 Miss Kylee Alton
 Amazatto Foods & Marketing, Inc.
 Miss Meagan Ames
 Mrs. Linda Amsden
 Anonymous
 Miss Melanie Arias
 Miss Paula Arias
 Mrs. Renee Ashton
 Mr. Jamael Babineau
 Mr. Won Suk Bae
 Ms. Lillian Baird
 Sally Baker
 Mr. and Mrs. Richard Banton
 Mr. and Mrs. Joey Bartlett
 Miss Samantha Bartlett
 Mr. Wayne Basford
 Mr. and Mrs. Scott Bean
 Jennifer Beane
 Mrs. Jacquelyn Bennett
 Miss Sarah Bennett
 Mr. Shawn Bennett
 Miss Katie Berryman
 Miss Meridith Berthelette
 Miss Kani Bertke
 Mr. Thomas Bertrand
 Mr. and Mrs. Gerald Beuermann
 Mr. Bruce Bickford
 Miss Hattie Bickford
 Ms. Marcia Bickford
 Miss Samantha Bickford
 Mrs. Gloria Bilodeau
 Mrs. Gertrude Bizeau
 Mr. Kyle Blaisdell
 Mr. Rodney Blaisdell
 Mr. Eric Bland
 Mr. Kevin Booth
 Mr. Joshua Bowring
 Mr. Colby Bradshaw
 Lanzara Brann
 Mr. Martino Brock
 Kenneth and Elaine Brown
 Miss Kierstin Brown

Mr. Ronello Brown
 Mrs. Sarah Brown
 Miss Marguerite Bryant
 Bud's Shop 'N Save
 Mr. James Burke
 Brig. Gen. Stephen Burritt
 Shandrea Caldwell
 Mrs. Charlene Call
 Nathan and Elizabeth Camp
 Mr. Albert Card
 Miss Jillian Carnrick
 Miss Annalise Carr
 Mr. and Mrs. Stanley Catell
 Mrs. Harriet Cederstrom
 Central Maine X-Ray
 Douglas and Christine Chadwick
 Ms. Donna Chale
 Mr. Harvey Chambers
 Mrs. Judith Chapman
 Mr. and Ms. Ralph Chapman
 Mr. and Mrs. Rudy Charrier
 Bruce and Evelyn Beane
 Mr. Richard Chick
 Ms. Jin Dae Cho
 Mr. Yoon Seok Cho
 Mr. Kaleb Chute
 Mrs. Helen Cianchette
 Mrs. Theresa Cianchette
 Mrs. Elizabeth Clark
 Mrs. Muriel Clement
 Mrs. Faylelne Cleveland
 Mrs. Barbara Cloutier
 Mr. and Mrs. Ed Colson
 Miss Alison Comissiong
 Miss Brandi Condon
 Miss Dori Condon
 Mr. Clarke Conlon
 Kenneth and Mary Connors
 Mrs. Heidi Cook
 Ms. Lynn Cook
 Mr. Nicholas Cook
 Mrs. Gladys Cookson
 Miss Mikayla Cooper
 Mr. and Mrs. C. Nelson Corey
 Mr. Elliot Cornell
 Mrs. Sandra Cote

Annual Fund ■ July 1, 2008-June 30, 2009

Donor Category List Cont.

Mrs. Brenda-Jo Crabtree
Mr. Kyle Crabtree
Mr. and Mrs. Asa Craig
Mrs. Jennifer Cram
Mrs. Donna Cray
Mr. Robert Creaser
Mr. Ryan Crocker
Mr. Scott Crosby
Mrs. Patricia Cunningham
Ms. Irma Cushing
Miss Shannon Dacey
Mrs. Eunice Damren
Ms. Shannon Davis
Mr. Andrew Denis
Ms. Angela Derosa
Mr. Richard Desmond
Miss Kimberly Dimuzio
Miss Ashley Dionne
Ms. Kelli DiTullio
Mr. Zachary Doiron
Ms. Pamela Drake
Mr. Marko Dujkovic
Mr. David Dunn
Merlon and Kay Dunton
Miss Ann Durham
Mrs. Helen Durham
Mr. Lawrence Dysart Jr.
Miss Leah Edmondson
Nausikaa El-Mecky
Miss Abigail Engelhardt
Ms. Carlene Engstrom
Mr. Efan Eren
Mr. Tobin Erhardt
Mrs. Sonia Erskine
Mr. and Mrs. Stanley Evard
ExxonMobil Foundation
Mr. Clement Farnham
Richard and Carol Farnsworth
Ms. Rachel Fendler
Mr. Donald Fenton
Mr. and Mrs. Dana Fields
Mrs. Alice Fitts
Ms. Erin Fitts
Mr. and Mrs. Gary Fitts

Mr. John Foss, Jr.
Mrs. Carolyn Foster
Mr. Thomas Foster
Miss Terra Frederick
Mrs. Sandra Friend
Mr. Cameron Frost
Miss Courtney Frost
Mr. Desmond Fuller
Suzanne Furrow
Mr. and Mrs. Dominic Gacetta
Michael and Helen Gallagher
Ms. Rebecca Geagan
Miss Michaela George
Mr. and Mrs. Christopher Gerry
Mr. Scott Giallombardo
Miss Kelly Gibson
Mrs. Glenys Gifford
Miss Taylor Gilbert
Mr. Goodwin Gilman
Miss Jessica Girroir
Miss Brittany Glencross
Lori Glidden
Mrs. Wendy Glidden
Mrs. Susan Goddard
Mr. Dean Grant
Mr. and Mrs. John Grass, Jr.
Ms. Judy Gray
Mr. David Grebru
Mr. John Griffin
Mr. Joshua Hale
Mr. Ross Hammond
Mr. Brian Hanson
Mr. Patrick Hapworth
Mr. Harold Harding
Mrs. Janice Harkins
Miss Tessa Hathaway
Miss Morgan Havey
Mr. William Hendricks, Jr.
Mr. Sean Henry
Mr. Riley Hicks
Mrs. Violet Higgins
Mrs. Cynthia Hinckley
Mr. Orman Hines
Mr. Eric Holden
Ms. Mona Hopkins
James and Eileen Hornor

Shawn and Mary Houston
Miss Whitney Houston
Mr. Yangwei Huang
Huff Forest Products
Mr. Taylor Huff
Mr. Shane Huffer
Miss Meghan Hughes
Nancy Hughes
Mr. Jacob Hunt
Miss Trang Thi Phuong Huynh
Mr. and Mrs. David Ingraham
Mr. Ronald James
Mr. Walter John
Jostens
Mr. Jason Judd
Mrs. Janet Kaufman
Miss Rachael Kelley
Mr. Thomas Kelley
Miss Merinda Kennedy
Mr. Calvin Kersbergen
Mr. Gary Kersbergen
Miss Haneul Kim
Mr. Jin Hyuk Kim
Mr. Sang-Yun Kim
Mrs. Tanya Kingsbury
Miss Ashley Kitchin
Mrs. Katherine Kitchin
Mrs. Mary Knight
Mr. and Mrs. Robert Kocsmiersky
Mrs. Jeanne Landry
Mr. Caleb Lasselle
Miss Nicole Lasselle
Mr. and Mrs. Floyd Lawrence
Miss Nga Hoang Thien Le
Miss Jong Ha Lee
Miss Meagan Leibowitz
Mr. Frank Leone
Mrs. Patricia Levasseur
Mr. Clair Lewis, Jr.
Miss Mei Wa Li
Mr. Derek Libbey
Miss Brooke Libby
Mrs. Shirley Libby
Miss Yichun Lin
Miss Joanna Lira
Ms. Jean Littlefield

Mrs. Marilyn Lloyd
Mr. Matthew Lobikis
Miss Courtney Lovely
Mr. Rui Lu
Miss Yinjing Lu
Miss Kendra Ludden
Mr. Michael Lynch
Mr. and Mrs. Charles MacDonald, Jr.
Miss Arielle Maloon
Mr. Tyler Maloon
Dr. James Manning
Ms. Lisa Manter
Mr. Clayton Marcoux
Mr. and Mrs. William Mather Jr.
Miss Julia Maxim
Miss Melissa McCaslin
Mr. Jared McCaw
Kelly McCormick
Mrs. Jacquelyn McCourtney
Mr. David McGaffin
Jodi McGary
Mr. Jacob McGowan
Mr. Kevin McGrady
Ms. Roberta McGuire
Mrs. Rebecca McKenney
Mr. and Mrs. Cecil McLaggan, Jr.
Miss Tiffany McLaggan
Mr. James Merrill
Miss Kayla Michaud
Mr. and Mrs. Bernard Miller
Mr. and Mrs. Edward Miller
Mr. Martin Mlinaric
Mrs. Meredith Monte
Mr. Andrew Moody
Mr. Benjamin Mosher
Mr. Gardner Moulton
Mr. David Murray
Miss Beccah Nadeau
Mrs. Beverly Nadeau
Mr. Lester Nadeau
Mr. and Mrs. Paul Nadeau
Miss Sarah Nadeau
Mr. Erick Nash
Mr. Cameron Neal
Miss Lauren Neal

Annual Fund ■ July 1, 2008-June 30, 2009

Donor Category List Cont.

Miss Brittany Nease
Mr. Gerald Newhall
Miss Libby Newhouse
Mr. Binh Quoc Nguyen
Miss Linh Huyen Nguyen
Mrs. Marlisa Noonan
Ms. Lynn Nunez
Ohiopyle Prints, Inc.
Mr. Scott Olney
Miss Jennifer Orchard
Miss Megan Orchard
Mr. Christopher Ouellette
Mr. Ray Paradis
Mr. Richard Parkhurst
Mrs. Alice Patterson
Colby Patterson
Mr. James Pavo
Mr. Jeffrey Paye
Mr. Dustyn Peppard
Miss Olivia Perkins
Mr. Steve Peterson
Miss Tam Thi Ming Pham
Miss Yoojin Pi
Mr. Shawn Plante
Mrs. Inez Pomerleau
Miss Haley Poulin
Mr. and Mrs. Bert Pratt, Jr.
Miss Stacy Pratts
Mr. Darian Prout
Mr. Donald Pushor
Ms. Susan Quinn
Mr. Simon Radford
Mr. Christopher Rainville
Mr. and Mrs. Donald Ramsdell
Mrs. Barbara Randall
Mrs. Lisa Rasmussen
Mr. Zackery Raye
Dr. and Mrs. Flint Reid
L. Kelley Rice
Mr. William Richardson
Casey Robinson
Mrs. Martha Robison
Mr. Norman Rogers
Mr. Mitch Rolls

Mr. Aaron Rosen
Mrs. Alice Ross
Mr. Ronald Rouleau
Miss Brooklyn Rowe
Mrs. Joyce Rowe
Miss Brenna Russell
Mrs. Donna Savage
Mrs. Sharon Savasuk
Mr. and Mrs. Roger Scott
Mr. and Mrs. Herbert Scribner, Sr.
Mr. Nicklaus Settles
Mrs. Twilda Shameklis
Mr. Thomas Shane
Mrs. Amanda Sherburne
Mr. Andrew Shorey
Mr. Christopher Shorey
Mrs. Kim Shorey
Miss Caroline Slymon
Mr. Jerald Smith
Mr. Robert Smith
Miss Gwenivere Snow
Mr. and Mrs. Laurence Springer
Ms. Maxine Springer
Mr. Thomas Staples
Mrs. Evelyn Stavro
Mrs. Nicole Steeves
Mr. and Mrs. Richard Stone
Mr. Andrew Sturm
Mrs. Joan Suhr
Mr. and Mrs. Ted Susi
Mr. Wayne Susi
Mr. Lee Suvlu
Miss Emmalee Swift
Miss Jessica Talbot
Mr. Earle Tarbell
Mr. Joseph Tardif
Mr. Basil Tasker, Jr.
Miss Lauren Tata
Mr. Dylan Thibodeau
Mrs. Jennie Thompson
Mr. Hunter Tibbetts
Miss Ling Tong
Mrs. Hope Tormey
Mr. Ryan Tozier
Mr. Zachary Tull
Mr. Thomas Turner
Mr. James Tyson
Unum Provident
Miss Danielle Varney
Mr. Cody Vaughn
Mr. Trey Vintinner
Miss Natasha Wallace
Walmart
Miss Ya-Wen Wang
Mr. Zuming Wang
Mr. George Webber
Mr. Eric Weeman
Mr. Robert Wehrwein
Miss Courtney Welch
Mr. Thomas Wentworth
Miss Sarah West
Mr. Kyle White
Mr. Markus White
Dolnar and Patricia Whitten
Mr. and Mrs. Michael Wiers
Mrs. Betsey Williams
Ms. Joyce Williams
Mr. and Mrs. Dale Wilson
Mrs. Margaret Witham
Miss Cheyanne Wone
Miss Heidi Woodbury
Mr. Eric Wright
Taylor Wright
Miss Lishu Xiang
Mr. Tongyu Xie
Miss Yeji Yang
Mr. Chun Ting Yip
Mr. Jong Hyuk Youn
Miss Xiao-Ran Zhang
Mr. and Mrs. Robert Zimmer
Mr. Pavle Zogovic
Mr. Borja Zubiaga Delclaux

CONNECT WITH US ONLINE!

Check out MCI's webpage at
www.mci-school.org

You can:

- View slideshows of recent events
- Update your contact information online
- Submit Class Notes
- Search for Classmates



Subscribe to
the *Pawprint*,
MCI's
e-newsletter



Become a fan
on Facebook
and stay
connected

MCI @ Beach to Beacon 10K August 1, 2009



L to R: Sarah Reeves Williams, Scott Giallombardo '00, Jason Judd, Jim Hornor, Trustee Peter Fendler '80 and Jessica Cardenas (not pictured) represented MCI in the 2009 Beach to Beacon 10K race.

Each year, a different Maine-based, non-profit youth organization is chosen as beneficiary of the TD Banknorth Beach to Beacon 10K Road Race. The 2009 recipient was Maine Handicapped Skiing.

Annual Fund ■ July 1, 2008-June 30, 2009

Giving By Class Year

Class Of 1933

Jennie Thompson
11.11% (1 out of 9) gave/pledged
\$20.00

Class Of 1935

E. Robert Kinney
7.69% (1 out of 13) gave/pledged
\$1,000.00

Class Of 1936

Norman A. Rogers
6.25% (1 out of 16) gave/pledged
\$50.00

Class Of 1937

Paul C. Houston
Betsey E. Williams
13.33% (2 out of 15) gave/
pledged \$200.00

Class Of 1938

Nicholas J. Craig
Elbert M. Prince Estate*
5.56% (2 out of 19) gave/pledged
\$20,100.00

Class Of 1939

Stanley L. Fletcher
Harold J. Harding
Rita R. Norton*
11.11% (3 out of 19) gave/pledged
\$225.00

Class Of 1940

Ronello F. Brown
James H. Merrill
Meredith R. Monte
16.67% (3 out of 18) gave/
pledged \$115.00

Class Of 1941

Gladys Cookson
Floyd A. James
Jean Maynard
18.75% (3 out of 16) gave/
pledged \$650.00

Class Of 1942

Perino E. Almonte
Sylvia Berry
Carolyn Foster
Herbert C. Scribner
Rosalie Shaw
20.00% (5 out of 25) gave/

pledged \$410.00

Class Of 1943

Cynthia Crocker
Royce C. Rich
11.11% (2 out of 18) gave/pledged
\$1,100.00

Class Of 1944

Ival R. Cianchette
4.17% (1 out of 24) gave/pledged
\$500.00

Class Of 1945

Muriel B. Clement
Roger B. Percival
Wayne E. Susi
14.29% (3 out of 21) gave/
pledged \$2,735.00

Class Of 1946

Evelene Cianchette Estate
Donna J. Graham
Joyce C. Wyman
Stanley G. Wyman
13.79% (4 out of 29) gave/
pledged \$1,625.00

Class Of 1947

Alexander C. Agostinelli
Stanley D. Catell
Eunice B. Damren
Alice M. Fitts
Desmond Fuller
William Hendricks
Cecil L. McLaggan
Thomas F. Staples
16.67% (8 out of 48) gave/
pledged \$455.00

Class Of 1948

Helen L. Cianchette
Neil E. Larochelle
Robert H. Libby
Thomas O. Millett
Ruth J. Parkhurst
Alice Patterson
Elizabeth J. Whalen
Joyce M. Williams
16.00% (8 out of 50) gave/
pledged \$6,840.00

Class Of 1949

Albert L. Card
Harriet Cederstrom
Dominic J. Gacetta
Brian A. Hanson
Walter F. John

Mary Knight
Basil C. Tasker
14.89% (7 out of 47) gave/
pledged \$200.00

Class Of 1950

Gloria Bilodeau
John A. Grass
Virginia M. Landry
Julia Rodenbeck
8.51% (4 out of 47) gave/pledged
\$222.50

Class Of 1951

Beverly Berry*
Richard P. Berry
Mary Emerson
Adolph J. Gingras
Mary-Lou Grass
Patricia Levasseur
Heather Read
Alice Ross
Sterling I. Smith
Laurence C. Springer*
18.18% (10 out of 55) gave/
pledged \$1,212.50

Class Of 1952

Nancy Billings
Edson Buker
Sandra Carson
Glenys I. Gifford
Violet Higgins
Robert E. Knowles
Jeanne Landry
Shirley Libby
David M. McGaffin
Ronald Rouleau
Evelyn Stavro
Wayne A. Tilton
Dolnar E. Whitten
Patricia Whitten
Nancy Wilson
22.73% (15 out of 66) gave/
pledged \$2,329.96

Class Of 1953

Jacquelyn Bennett
Gertrude Bizeau
Olive G. Blodgett
Elizabeth M. Calise
Charlene Call
Sarah G. Chipman
Elizabeth Clark
Phillip L. Coffin
Asa B. Craig
Eugene Cropley
Gary C. Goodrich

John H. Hartleb
Charles F. MacDonald
Catherine M. Mooers
Louis H. Pepin
Robert A. Pickett
Donald V. Pushor
Joyce A. Rowe
Matthew Scott
Joan Suhr
26.67% (20 out of 75) gave/
pledged \$2,547.50

Class Of 1954

Weston A. Bubar
Sally Craig
John N. Foss
Kenneth Hallee
Janet Kaufman
10.20% (5 out of 49) gave/
pledged \$1,437.50

Class Of 1955

Sheila Allinson
Sonia Bartlett*
Anne Bowen
Francis N. Bowen
Harvey R. Chambers
Kay Dunton
Carol L. Farnsworth
Dana L. Fields
Clair H. Lewis
Sandra K. Powers
Joseph S. Tardif
15.71% (11 out of 70) gave/
pledged \$5082.50

Class Of 1956

Laurence S. Allen
Donald F. Fenton
John R. Griffin
Sallie I. Huot
Judith Simonton
7.14% (5 out of 70) gave/pledged
\$675.00

Class Of 1957

Beverly Allen
Phillips C. Baird
Clarke G. Conlon
Richard M. Desmond
Merlon A. Dunton
Michael P. McCready
David A. Mosher
Thomas D. Mourkas
Inez M. Pomerleau
10.47% (9 out of 86) gave/
pledged \$687.50

Annual Fund ■ July 1, 2008-June 30, 2009

Giving By Class Year Cont.

Class Of 1958

Thomas N. Chappelle
Ernold R. Goodwin
2.82% (2 out of 71) gave/pledged
\$327.00

Class Of 1959

Charles E. Armstrong
Adrienne Ashbaugh
Adrian E. Badger
Leo E. Belanger
Paul E. Bertrand
Frank B. Blanchard
Joan Bradstreet
Foster E. Brooks
Sylvia Bubar
Nancy Cameron
Barbara Charlamb
Marie Chase
Robert B. Creaser
Lawrence A. Dysart
Anthony J. Frederick
Sandra Friend
Richard L. Gordon
Dennis W. Haggerty
Janice Harkins
Eric J. Holden
Wayne A. Lawton
Walter E. Littlefield
Ellen MacMichael
James E. MacMichael
Donald J. McDougal
Janet McGowan
Terrance L. McGowan
Martha Mourkas
David R. Pattee
Mary-Lou T. Pray
Jean Tedesco
William L. Tedesco
Lucille Webber
31.13% (33 out of 106) gave/
pledged \$9,575.00

Class Of 1960

Delia Bickford
Joan Bradley
Sandra Cote
Sonia Erskine
Clement E. Farnham
Glennis Fields
Dean E. Grant
David A. Ingraham
Sherman L. Lahaie
Floyd A. Lawrence
Malcolm M. Meikle

Marilyn A. Nash
Leonard I. Nemon
Michael W. Parker
13.46% (14 out of 104) gave/
pledged \$1,280.00

Class Of 1961

Richard J. Allen
Sally S. Bryant
Roger O. Ginn
Thomas A. Gordon
Orman E. Hines
Anne Lawton
Rebecca McKenney
5.69% (7 out of 123) gave/
pledged \$2,406.08

Class Of 1962

Ronald E. Bessey
Daniel L. Brooks
Jean Carnes
David W. Dunn
Madelyn Given
Marvin H. Glazier
Robert L. Kocsmiersky
Peter L. Redfern
Michael T. Savage
Tom J. Winsor
7.14% (10 out of 140) gave/
pledged \$27,531.77

Class Of 1963

James E. Allen
William B. Ball
Thomas E. Foster
Wayne A. Pinkham
Patricia Skaling
Robert J. Smith
Earle W. Tarbell
Margaret Veilleux
6.30% (8 out of 127) gave/
pledged \$1,750.00

Class Of 1964

Joseph W. Barnes
Judith Chapman
Ralph W. Damren
Theodore M. Grant
Richard A. Hartford
Thomas R. Kelley
Ronald G. Kinney
Robert D. Menucci
Thomas W. Savage
Carole M. Vigue
Robert G. Wehrwein
8.66% (11 out of 127) gave/
pledged \$10,586.00

Class Of 1965

Karoldene Barnes
Pamela Brooks
James E. Gould
Tania J. Hannon
Ronald E. James
Robert W. Perry
Peter Susi
Peter G. Vigue
Leigh J. White
5.36% (9 out of 168) gave/
pledged \$7,775.00

Class Of 1966

Carol Sue Armstrong
Richard L. Chick
James M. Manning
Dalen C. Mills
Gerald S. Newhall
Anna Maria Parker
Herschel E. Sinclair
Thomas E. Wentworth
Norbert W. Young
6.08% (9 out of 148) gave/
pledged \$17,731.00

Class Of 1967

Douglas L. Chadwick
Susan D. Haseltine
John A. Leonard
Nancy A. Sander
Twilda Shameklis
Valerie Sinclair
Frank A. Tredinnick
Michael A. Wiers
4.47% (8 out of 179) gave/
pledged \$2,487.50

Class Of 1968

Dennis W. Bickford
Stephen C. Burritt
Garret E. Cole
Cynthia Hinckley
Richard W. Parkhurst
3.36% (5 out of 149) gave/
pledged \$20,540.75

Class Of 1969

Bradley W. Cahill
Christine Chadwick
Mac C. Cianchette
Gary Fitts
Susan Goddard
Dean A. Homstead
Matthew G. Lobikis
James R. Maynard
Gregory J. Patterson

Ronald L. Risciotti
Susan Ryman
Linda J. Shorey
Bruce A. Williamson
9.77% (13 out of 133) gave/
pledged \$26,842.50

Class Of 1970

Wayne Basford
Scott R. Bean
Marcia L. Bickford
William A. Cunningham
David B. England
Darrell D. Goodridge
Ted Susi
5.69% (7 out of 123) gave/
pledged \$1,055.00

Class Of 1971

Sally Baker
Judy Gray
Laurie B. Loosigian
Milton A. Webber
Kenneth J. Yanco
4.72% (5 out of 106) gave/
pledged \$5,325.50

Class Of 1973

Michael J. Ames
Tania Camrick
Scott L. Carter
Susan England
Maureen J. Lambert
Ronald C. Lambert
Thomas E. Quint
David L. Reifschneider
10.53% (8 out of 76) gave/
pledged \$6,368.02

Class Of 1974

Brenda-Jo Crabtree
Russell J. Hall
2.47% (2 out of 81) gave/pledged
\$254.83

Class Of 1975

Richard P. Berry
Karen L. McGrady
Lisa B. Sauer
3.45% (3 out of 87) gave/pledged
\$325.00

Class Of 1977

Stephen R. Collier
Mary Connors
Kenneth J. Connors
James B. Hammond
4.12% (4 out of 97) gave/pledged

Annual Fund ■ July 1, 2008-June 30, 2009

Giving By Class Year Cont.

\$5,196.00

Class Of 1978

Robert M. Cianchette

Lewis R. Fitts

Ashley R. Hart

John A. LeMieux

Gary L. Liimatainen

5.95% (5 out of 84) gave/pledged

\$1,820.00

Class Of 1979

Kelly N. Fitts

Dena L. Hall

Nancy A. Quint

2.50% (3 out of 120) gave/pledged

\$744.83

Class Of 1980

Peter J. Fendler

Lori Glidden

1.85% (2 out of 108) gave/pledged

\$1,368.02

Class Of 1981

David O. Baker

Tracye Fortin

Suzanne Furrow

Ray K. Paradis

Anna K. Peterson

3.45% (5 out of 145) gave/pledged

\$300.50

Class Of 1982

William M. Bradshaw

0.91% (1 out of 110) gave/pledged

\$100.00

Class Of 1983

Jean Bradshaw

John R. Mosher

Edward E. Porter

2.42% (3 out of 124) gave/pledged

\$1,460.00

Class Of 1984

Timothy T. Archibald

Joey A. Bartlett

Michael P. Dow

Shawn M. Houston

Michael D. Lynch

3.97% (5 out of 126) gave/pledged

\$1,832.50

Class Of 1985

James C. Christie

Douglas W. Clapp

Jana Morra

Hope Tormey

3.2% (4 out of 125) gave/pledged

\$785.00

Class Of 1986

Michael A. Hodgins

Mary Houston

David W. MacGown

Marlisa Noonan

Kim Shorey

4.76% (5 out of 105) gave/pledged

\$579.50

Class Of 1987

Nancy Hughes

Katherine Kitchin

Scott L. Olney

3.33% (3 out of 90) gave/pledged

\$59.00

Class Of 1988

Jennifer Cram

0.85% (1 out of 117) gave/pledged

\$25.00

Class Of 1990

Thomas Bertrand

0.74% (1 out of 136) gave/pledged

\$80.85

Class Of 1991

Michelle Hodgins

0.92% (1 out of 109) gave/pledged

\$250.00

Class Of 1993

Matthew D. Stein

0.78% (1 out of 128) gave/pledged

\$100.00

Class Of 1995

Shandrea M. Caldwell

Alison Comissiong

Donna Stein

2.00% (3 out of 150) gave/pledged

\$136.00

Class Of 1996

Jodi L. McGary

Eric Wright

1.49% (2 out of 134) gave/pledged

\$20.50

Class Of 1997

Jennifer V. Beane

Aaron M. Rosen

2.63% (2 out of 76) gave/pledged

\$50.00

Class Of 1999

Jin Dae Cho

Shannon L. Davis

Nicole Steeves

2.42% (3 out of 124) gave/pledged

\$101.85

Class Of 2000

Kyle E. Crabtree

Scott J. Giallombardo

1.57% (2 out of 127) gave/pledged

\$31.25

Class Of 2001

Rachel L. Fendler

Christopher T. Gerry

1.54% (2 out of 130) gave/pledged

\$150.00

Class Of 2002

Erin Fitts

0.71% (1 out of 140) gave/pledged

\$30.00

Class Of 2003

Hollie Higgins

0.65% (1 out of 155) gave/pledged

\$50.00

Class Of 2005

Jillian Carnrick

Ann Durham

1.44% (2 out of 139) gave/pledged

\$45.00

Class Of 2006

Andrew Moody

0.68% (1 out of 148) gave/pledged

\$50.00

Class Of 2007

Sarah West

0.60% (1 out of 168) gave/pledged

\$10.00

Class Of 2008

Won Suk Bae

Jessica Talbot

1.35% (2 out of 148) gave/pledged

\$2.00

Class Of 2009

Chelsea Albert

Jamael Babineau

Eric Bland

Joshua Bowring

Brandi Condon

Zachary Doiron

Efkan Eren

Tobin Erhardt

Joshua Hale

Ross Hammond

Rachael Kelley

Haneul Kim

Jin Hyuk Kim

Jong Ha Lee

Meagan Leibowitz

Derek Libbey

Brooke Libby

Yichun Lin

Joanna Lira

Michael Lynch

Arielle Maloon

Tiffany McLaggan

Martin Mlinaric

Beccah Nadeau

Sarah Nadeau

Lauren Neal

Libby Newhouse

Binh Quoc Nguyen

Dustyn Peppard

Olivia Perkins

Tam Thi Ming Pham

Yoojin Pi

Stacy Pratts

Andrew Shorey

Caroline Slymon

Thomas Turner

Markus A. White

Brandon Wilson

Cheyenne Wone

Lishu Xiang

Tongyu Xie

Jong Hyuk Youn

Xiao-Ran Zhang

25.29% (43 out of 170) gave/pledged

\$185.00

Totals for All Classes

5.5% (396 out of 7,251) gave/pledged

\$208,145.21

*Deceased

Annual Fund ■ July 1, 2008-June 30, 2009

Unrestricted AF 144,937.40
(includes matching gifts)

Restricted Annual Giving

Class of '59 Gift	5,875.00
Carl Wright Endowment	3,050.00
Faculty Endowment	3,000.00
Endowment for Buildings & Grounds	20,140.75
Track Team	587.00
PG Athletics	5,000.00
Music	2,150.00
Wood Project	3,700.00
Student Council	10.00
Baseball	300.00
Science	250.00
Masardis	25.00
Humanities	4,715.41

Restricted Scholarships

Boys and Girls Club	230.00
Elmer Leonard '39 Scholarship	4,000.00
Frank & Anne Bowen '55 Schol.	4,000.00
Hardwood Club	3,602.00
Korean Scholarship	1,000.00
Libby Fellowship Fund	5,000.00
Blaine Littlefield '99 Scholarship	740.00
Margaret Kohler Havey Scholarship	100.00
James M. Randall Endowed Schol.	100.00
Roy & Alice Sinclair Scholarship	1,000.00
Cassidy Scholarship	200.00
Inspiration Award	200.00
Marshall & Rowena Nash Schol.	100.00
Botany Award	250.00
Edna Reed Scholarship	125.00
Reny Charitable Foundation Award	3,000.00
Maurice & Hazel Earle Scholarship	100.00
Whitney Hammond '05 Scholarship	4,786.05

Gifts-In-Kind 23,770.14

Estate of Elbert "Al" Prince '38 20,000.00
Total Unrestricted and Restricted 266,043.75

Annual Auction 2009 Income 17,706.05

Total Annual Giving 283,749.80

GIFTS-IN-KIND

Mr. & Mrs. Earl Anderson, Mr. & Mrs. Troy Barker, Mr. Paul Bertrand '59, Mr. & Mrs. Weston '54 Bubar, Mr. David Campbell, Mr. Scott Carter '73, Ken & Mary Connors '77, Doug & Lori Cummings, Mr. Peter Fendler '80, Dena '79 & Russell '74 Hall, Hancock Lumber, Mr. & Mrs. Christopher Hopkins, Jostens, Mr. & Mrs. Robert '52 Knowles, Mrs. Susan Mendell, Mr. Robert Menucci '64, Mr. Todd Nadeau, Mr. & Mrs. Michael Payne, Mr. & Mrs. Roger '45 Percival, Reny Charitable Foundation, Mrs. Deborah Rozeboom, Mr. & Mrs. Michael '62 Savage, Mrs. Carolyn Smith, Mr. & Mrs. Richard Waite, Walmart, Mr. Milton Webber '71, Mr. & Mrs. Norbert '66 Young, Jr.

CLASS OF '59 GIFT

Amazatto Foods & Marketing, Inc.; Mr. & Mrs. Charles E. Armstrong; Mr. & Mrs. Leo Belanger; Paul Bertrand; Joan Bradstreet; Sylvia Bubar; Nancy Cameron; Barbara Charlamb; Marie Chase; Robert Creaser; Lawrence Dysart, Jr.; Mr. & Mrs. Anthony Frederick, Jr.; Sandra Friend; Richard L. Gordon; Mr. & Mrs. Dennis Haggerty, Jr.; Janice Harkins; Mr. & Mrs. Wayne Lawton; Walter E. Littlefield; James & Ellen MacMichael; Donald J. McDougal; Janet McGowan; Martha Mourkas; David Pattee; Mary Lou Pray; Jean & William Tedesco; Lucille Webber

MEMORIAL GIFTS UNRESTRICTED

IN MEMORY OF BEVERLY BERRY '51

Ms. Lillian Baird; Mr. & Mrs. Richard Banton; N. Blake Bartlett; Mr. & Mrs. Richard '75 Berry, Jr.; Richard Berry, Sr. '51; Ronald Bessey '62; Mr. & Mrs. Gerald Beuermann; Mrs. Helen Cianchette '48; Mrs. Theresa Cianchette; Mrs. Barbara Cloutier; Mr. & Mrs. Ed Colson; Mrs. Sandra Cote '60; Goodwin O. Gilman; Darrell Goodridge '70; Violet Higgins '52; Mona Hopkins; Mr. Frank Leone; Mrs. Marilyn Lloyd; Mrs. Jacquelyn McCourtney; Mr. & Mrs. Bernard Miller; Catherine Mooers '53; Sandra Powers '55; Donald Pushor '53; Mr. & Mrs. Donald Ramsdell; Mrs. Heather Read '51; Mrs. Alice Ross '51; Mr. & Mrs. Roger Scott; Mrs. Persis Smith; Mr. & Mrs. Laurence C. Springer '51; Mrs. Evelyn Stavro '52; Mr. & Mrs. Richard Stone; Mrs. Ellen Sylvia; Mr. Mark Vining; Joyce Williams '48

IN MEMORY OF PAUL LEGGE

Mr. & Mrs. William Ball '63; N. Blake Bartlett; Mrs. Patricia Cunningham; David '70 & Susan '73 England; Mr. & Mrs. Anthony Frederick, Jr. '59; Mrs. Marilyn Lloyd; David McGaffin '52; Mrs. Persis Smith

IN MEMORY OF ELBERT "AL" PRINCE '38

Mr. Dennis Bickford '68; Marcia Bickford '70; Mr. Robert Chase; Mrs. Faylene Cleveland; Mr. & Mrs. William J. Mather, Jr.; Mr. & Mrs. Ronald McGowan

IN MEMORY OF HARRY TRUE

Annual Fund ■ July 1, 2008-June 30, 2009

David '70 & Susan '73 England

IN MEMORY OF JOHN FURBUSH & FLORENCE FURBUSH CHAFFIN

Susan '69 & Ed Ryman

IN MEMORY OF MARIE TASKER WALKER '47

Basil Tasker, Jr. '49

IN MEMORY OF ROY POMEROY '58

Mr. & Mrs. Robert Zimmer

MATCHING GIFTS

ConocoPhillips – Matching gift for Michael Ames '73

ExxonMobil Foundation – Matching gift for Robert Traill in memory of Elbert Prince

Medela, Inc. – Matching gift for Timothy '84 & Carolin Archibald

Unum Provident – Matching gift for Andrea '75 & Scott Maker

Verizon Foundation – Matching gift for Brenda & Daniel Breton

RESTRICTED GIVING

Track Team – Mr. & Mrs. Joey '84 Bartlett; Mr. Wayne Basford '70 (in memory of Stan Basford); Bud's Shop 'N Save; Cianbro Corporation; Elks Lodge 2713; David & Tracye '81 Fortin; Mary Houston '86; Katherine Kitchin '87; Ms. Jean Littlefield; Ms. Maxine Springer; Brandon Wilson '09; Mr. & Mrs. Dale Wilson

PG Athletics – Mr. & Mrs. Stephen '77 Collier

Student Council – Huff Forest Products

Music – Mr. & Mrs. Robert K. Downs; First Baptist Church of Pittsfield; Alice Fitts '47; WABI TV 5; Rosalie Williams

Wood Project – First Baptist Church of Pittsfield; Mr. & Mrs. Christopher Hopkins; Dalen Mills '66; Edward Porter '83; Peter '65 & Carole '64 Vigue; Gerry Wright

Cassidy Scholarship – Carole Kaufmann

Korean Scholarship – Mr. Jong Sung Kim; Suk Kung Ko; Korean Parents

Baseball – Mr. Michael Lynch '84

Inspiration Award – Karen '75 & Frank McGrady

Science – Marilyn Nash '60

Marshall & Rowena Nash Schol. – Marilyn Nash '60

Botany Award – Pittsfield Community Garden

Edna Reed Scholarship – Pittsfield Tuesday Club

Reny Charitable Foundation Award – Reny Charitable Foundation

Maurice & Hazel Earle Schol. – William & Lorna Taylor

Masardis – Mr. & Mrs. Richard Waite

Roy & Alice Sinclair Schol. – Robert & Nancy '52 Wilson; Sallie '56 & Arthur Huot

Humanities – Mr. & Mrs. Norbert '66 Young, Jr.

Carl Wright Endowment – N. Blake Bartlett; Sally '61 & Peter Bryant; Tania '73 & Doug Carnrick; Dean Homstead '69; Mr. & Mrs.

Robert '52 Knowles; Gary Liimatainen '78; Mr. & Mrs. Ted '70

Susi; Mr. & Mrs. Norbert '66 Young, Jr.

Frank & Anne Bowen Schol. – Frank & Anne Bowen '55

Boys / Girls State – Cianbro Corporation

Endowment for Buildings & Grounds – Garrett Cole '68

Elmer Leonard Schol. – E. W. Leonard, Inc.; Mr. & Mrs. John '67 Leonard

James Randall Schol. – Mr. & Mrs. Stanley Evrard; Mr. & Mrs. Paul Nadeau; Barbara Randall

Libby Scholarship – Mr. & Mrs. Robert '48 Libby

Hardwood Club – Bradley Miller

Margaret Kohler Havey Schol. – Mrs. Helen Mosher

Faculty Endowment – Mr. & Mrs. Gregg '69 Patterson

Blaine Littlefield Schol. – Pamela Brooks '65; Brenda-Jo '74 & Ted Crabtree; Kyle Crabtree '00; Andrea Mann; Nancy Quint '79

Whitney Hammond Scholarship – Mrs. Donna Chale; Mr. & Mrs. Rudy Charrier; Mrs. Evelyn Chase; Scott Crosby; Ms. Shannon Davis '99; Ms. Angela Derosa; Miss Ann Durham '05; Mrs. Helen Durham; Nausikaa El-Mecky; Ms. Rachel Fendler '01; Ms. Erin Fitts '02; Karen Getchell; Mr. & Mrs. James '77 Hammond; Andrew Moody '06; Crystal Olsen; Oz Hair Salon; Karen Peck; Shawn Plante; Simon Radford; Dr. & Mrs. Flint Reid; Casey Robinson; Donna Savage; Skowhegan Area High School; Valory Slymon; Hannah Teichmann; Liza Watts; Sarah West '07; Eric Wright '96

MCI Alumni Field Hockey Game

September 27, 2009



The MCI Field Hockey team, led by coach Nancy Hughes '87, raised over \$300 in donations from their Alumni Field Hockey Game that took place the Sunday of Homecoming Weekend. Despite the weather, 16 alumnae from '83 to '09 and two parents of current players participated.

The money raised is primarily used to subsidize the team's attendance at camp and playing in offseason tournaments and round-robins.

The Field Hockey team had a great season this year, making the playoffs for the first time since 2001. They ultimately lost in the quarterfinal game to the eventual state champions.

Class Agents

1936

Evalene Pendexter White
46 Jones St
Madison, ME 04950-1525
Phone: (207) 696-5063

1937

Betsey Libbey Williams
429 Heather Rd
Orem, UT 84097-2253
Phone: (801) 235-9105

1942

Arlene Frederick Beardsley
141 W River Rd Apt. 205
Waterville, ME 04901

1944

Barbara White Harthorn
PO Box 695
Skowhegan, ME 04976-0695
Phone: (207) 474-2948

1946

Donna Hodgins Graham
19 Wood St
Nashua, NH 03064-2352
Phone: (603) 889-0330
Email: djg1227@mycidco.com

1947

Alice Wright Fitts
371 Ell Hill Rd
Palmyra, ME 04965-4016
Phone: (207) 487-6938

Phyllis Frederick Luke
125 Harrisburg Ave., Unit 1
Westbrook, ME 04092-2157
Phone: (207) 781-2489

1948

Arey Bryant
18 School St
Pittsfield, ME 04967-1313
Phone: 207-487-2454

Elizabeth Coolidge Whalen
922 Ohio St Apt 314
Bangor, ME 04401-3080
Phone: 207-947-4090
Email: elizajack@webtv.net

1950

Virginia Coolbroth Landry
49 Roosevelt Ave
Waterville, ME 04901-4927
Phone: (207) 873-2662
Email: ginoland@roadrunner.com

1951

Sally Cianchette Dwinell
264 Grove St
Newport, ME 04953-3348
Phone: (207) 368-5886

Alice Fitts Ross
334 Stinson Street
Pittsfield, ME 4967
Phone: 487-5273

1952

Beverly Turner Breau
364 Ell Hill Rd
Palmyra, ME 04965-4015
Phone: (207) 487-2483

David McGaffin
118 Nichols St
Pittsfield, ME 04967-1612
Phone: (207) 487-2522

1953

Catherine Doyle Mooers
PO Box 52
Manchester, ME 04351-0052
Phone: (207) 622-2586
Email: k.mooers@juno.com

1956

Catherine Folsom Janus
65 Cascade Rd
Amenia, NY 12501-5102
Phone: 845-373-4222
Email: cappie3_5@verizon.net

Judith Burke Simonton
20 Highland Ave Apt 15
Camden, ME 04843-2127
Phone: (207) 236-2919
Email: simonton7841@roadrunner.com

1959

Martha Menendez Mourkas
47 Staples Point Rd

Freeport, ME 04032-6004
Phone: (207) 865-9286
Email: mmourkas@yahoo.com

1960

Joan Basford Bradley
25 Basford Rd
Detroit, ME 04929-3002
Phone: (207) 257-4955
Email: Momjone@aol.com

Rachel Fields Fleming
781 N. Chester Rd.
Chester, ME 04457-2711
Phone: (207) 794-2711

Marilyn Nash
469 W. Sierra Madre Blvd. Apt. F
Sierra Madre, CA 91024-2380
Phone: 626-355-8410
Email: marilynannenash@aol.com

1961

Linda Mercier Marson
29 Duncan Rd
Augusta, ME 04330-5905
Phone: 622-0278
Email: LMarson@roadrunner.com

1962

Peter Redfern
3 Highland Pines
Scarborough, ME 04074-8741
Phone: 207-883-8723
Email: Predfern@maine.rr.com

1963

Wayne Pinkham
5616 Chinook Ct
Flowery Br, GA 30542-2776
Phone: 770-967-2229
Email: wpink1288@aol.com

1964

Barbara Vigue Day
61 North St
Hartland, ME 04943-3727
Phone: (207) 938-3565

1965

Richard Gould
16 Ledgewood Rd

Class Agents Cont.

Framingham, MA 01701-3667
Phone: (508) 875-1296
Email: mjrich95@aol.com

Charlene Buzzell Lowe
122 Tolman St
Westbrook, ME 04092-4430
Phone: (207) 854-2355
Email: cblowe413@aol.com

Gale Pomeroy Russell
112 Traders Station Rd.
Summerville, SC 29483-1838
Phone: 757-925-0098
Email: galey-girl@mymailstation.com

Lawrence Yeaton
1111 Richland Ave, West
Aiken, SC 29801-3225
Phone: 803-335-8981
Email: Yeaton_LL2007@yahoo.com

1966

Anna Maria Parker
4940 N. Hacienda del Sol
Tucson, AZ 85718
Phone: 520-615-5168

1967

Sheilya Cookson Voter
519 Troy Rd
Burnham, ME 04922-3503
Phone: (207) 948-2184
Email: dsvoter@gmail.com

1968

Sharon Hanson Ringuette
32 Lincoln St
Gardner, MA 01440-2247
Phone: (978) 632-2468
Email: sringuette@juno.com

1969

Dianne Debay Whitney
147 Middle Rd
Fairfield, ME 04937-3240
Phone: (207) 453-2876
Email: Sadiebug@localnet.com

1970

David England
15 Tomahawk Cir

Saunderstown, RI 02874-2111
Phone: (401) 295-5147

1971

Earle Friend
PO Box 69
Pittsfield, ME 04967-0069

1973

Susan Smith England
15 Tomahawk Cir
Saunderstown, RI 02874-2111
Phone: 401-294-3679
Email: surf7073@cox.net

1974

Vera Lloyd Bryant
179 Dorothy St.
Pittsfield, ME 04967-1447
Phone: (207) 487-2751
Email: verabryant@excite.com

1975

Kevin Bryant
179 Dorothy St.
Pittsfield, ME 04967-1447
Phone: (207) 487-2751

1976

Donald Hallenbeck
107 Ryan St., Apt. 202
Pittsfield, ME 04967-1468
Phone: (207) 487-2254
Email: photoman_Flash@yahoo.com

1977

Susan Williams Ouellette
654 Main St
Pittsfield, ME 04967-5910
Phone: (207) 487-6127

1978

Rose Tozier Grattan
127 Ryan St. Apt. 102
Pittsfield, ME 04967-4162
Phone: (207) 487-5280

1978

Robert Stackhouse
56 Somerset Ave
Pittsfield, ME 04967-1314
Phone: (207) 487-6629

1979

Trudi Bickford Ames
489 Webb Road
Pittsfield, ME 04967-9734
Phone: (207) 487-3493
Email: number3@midmaine.com

Ann Cianchette
255 Main St
Cumberland, ME 04021-3646
Phone: 318-5318
Email: annnc@maine.rr.com

1980

Belinda Lawrence Sterling-LaFlamme
124 Halifax St
Winslow, ME 04901-6937
Phone: (207) 872-2331
Email: bsterlinglaflamme@emh.org

1981

Suzanne Lynch Guild
34 West St
Manchester, ME 04351-3418
Phone: (207) 623-9404
Email: dsguild@roadrunner.com

Mary Raynes
3563 SE Pine St
Hillsboro, OR 97123-7751

1982

Nancy Bertrand Shorey
268 School St
Pittsfield, ME 04967-1307
Phone: 207-487-5953
Email: dnshorey@verizon.net

1983

Ann MacLauchlan Manian
4873 Halwell Dr
Virginia Beach, VA 23464-8418
Phone: (757) 467-2132

Charice Ouellette Sullivan
8 Drew Rd
Somersworth, NH 03878-1402
Phone: 603-436-6100
Email: crazyknits@aol.com

1984

Tracy Goodridge
120 Airline Rd
Clifton, ME 04428-6001

Class Agents Cont.

Phone: 207-843-5617
Email: trgoodridge@myfairpoint.net

Patricia Cianchette Skirnick
762 Concord Point Dr.
Perryville, MD 21903-2565
Phone: 910-382-6175
Email: newyeargrl66@hotmail.com

1985
Jennifer Quint Dow
208 Peltoma Ave
Pittsfield, ME 04967-1633
Phone: 207-487-6929
Email: jenniferqdw@verizon.net

1986
Lisa Nickerson
110 Hathorn Street, Apt. 202
Pittsfield, ME 4967
Phone: 207-487-2438
Email: nickerof1986@yahoo.com

1987
Michael Clapp
12109 Beeflower Drive
Lakewood Ranch, FL 34202
Phone: (207) 474-2553
Email: mike@incubatorquotient.com

1988
Loren Lavalie Martin
60 Birchdale Rd
Concord, NH 03301-8435
Phone: 603-715-1194
Email: lorenjmartin@comcast.net

CJ Mitchell
39 Grey Meadow Dr
Burlington, VT 05408-1319
Phone: 802-951-8690
Email: cj_mitchell@idx.com

1989
Lisa Cook Madore
78 Summer St Apt 1
Oakland, ME 04963-4522
Phone: (207) 465-3496
Email: lisa_madore2000@yahoo.com

1990
Thomas Bertrand
295 Main St.
Pittsfield, ME 04967-1624
Phone: (207) 487-3355 x 220
Email: tbertrand@mci-school.org

1991
Nanette Farrin Ardry
29 Peltoma Ave
Pittsfield, ME 04967-1630
Phone: 207-487-6056
Email: nanetteardry@verizon.net

James Richards
2563 Moody Ave
Orange Park, FL 32073-5957
Phone: 904-470-7959
Email: richardsjnl@yahoo.com

1992
Laura Norris
34 S Mentor Ave Apt 200
Pasadena, CA 91106-2922
Phone: 626-484-4960
Email: lobonorris@aol.com

1993
Jennifer Kuhlmeier Lebo
56 Winthrop Street
Milton, MA 2186
Phone: 781-974-8013
Email: jenkuhlmeier@hotmail.com

1994
Courtney Cianchette Harvey
268 Parkview Ave
Bangor, ME 04401-4063
Phone: (207) 487-3814
Email: cscharvey@gmail.com

1995
Lisa Salley Erhardt
15 Chapel Rd
Orono, ME 04473-4202
Phone: 207-866-2151
Email: lerhardt@asa-adams.u87.k12.me.us

1996
Jodi Cummings McGary
245 Hamilton Terrace
Pittsfield, ME 4967
Phone: (207) 487-3457

Email: jodi92478@yahoo.com

1997
Stephanie Vigue McLean
PO Box 291
Pittsfield, ME 04967-0291
Phone: 848-2709
Email: smclean@wildblue.net

1998
Jason Cummings
267 Melba St. #21B
Milford, CT 6460
Email: JCummings@gfacademy.org

1999
Nancy Cavanaugh
c/o 653 North Creek Rd.
Greenfield Center, NY 12833
Email: ncavanaugh33@aol.com

2000
Hillary Stevens
7 Manson St
Pittsfield ME 04967-1512
Phone: (207) 487-5630

2001
Daniel Flaherty
280 Lower Road
Appleton, ME 4862
Phone: 207-975-9255
Email: mci_classof01@hotmail.com

2002
Alisia Melvin Leavitt
PO Box 185
Phippsburg, ME 4562
Email: alisia.leavitt@gmail.com

2003
Ashley Holt
19400 E 37th Terr Ct South Apt 606
Independence, MO 64057
Phone: (207) 907-0308
Email: aholt@comcast.net

2009
Brandon Wilson
307 Higgins Rd.
Pittsfield, ME 4967
Phone: (207) 487-6614

Blaine K. Littlefield Memorial Scholarship Walk August 2, 2009



The walk for the Blaine K. Littlefield Memorial Scholarship raised \$5,273! Thank you to everyone who participated.

Josh Allen; Donald & Cindy Annis & Family; Hannah, Ryan & Laura Annis; Robert Ballard '79; Jeffery Bennett '79; Tamara Bickford '76; Jeanne Boisvert; Curtis Booth '99; Cormie Boucher; Rosalyn '79 & Hays Bowne; Justin '99 & Kim Bradbury; Jean '83 & Bill '82 Bradshaw; Neisha Bragg; Pam Brooks '65; Nellie Buzzell; Scott Carter '73; Ann Cianchette '79; Ada Cobb; Ann Marie & Reggie Cobb & Family; Paula Collier; Anthony Crabtree '03 & Kate Wardwell; Joel Crabtree '03; Kyle Crabtree '00; Ted & Brenda Crabtree; Stan M. Craig; Doug & Lori Cummings; Ashley Currier '05; Paul & Dodie Curtis; Larry & Reni Davis; Shannon Davis '99; Ronald & Araminta Dorman; Norma Duplessie; Anthony Edith '79; Louise Ernest; Ane Faneslia; Georgie '64 & Ron '60 Farrin; Ross '78 & Kelly '79 Fitts; David & Tracye '81 Fortin & Family; Susan '66 & Ron '65 Friend; Victoria Friend; Kelli '77, Brent '77 & Sarah '05 Frost; Suzanne Furrow '81; Katie George 2015; Tammy George '86; Bonnie German '79; Wayne Germany '79; Kathy Giroux; Chuck & Lori '80 Glidden; Sue & Leon Gore; William & Marilyn Graham; Dena '79 & Russell '74 Hall; Jason Hall '04; Donald Hariman & Family; Autumn Hendricks '03; Barbara Herrick; Roberta '79 & Roscoe Hicks; Rolf Hiller '99; Ralph Huff '78; Gregg & Nancy '87 Hughes & Family; Andrea Illingworth; Ralph '75 and Tammy '77 Ingraham; Gregory Kane; Milt & Fran Kirk; Barbara Kitchin '99; Gary '67 & Lovina Kitchin; Justin Ladd 2000 & Jen Williams; Bayford & Colleen Lancaster; Diann Libby '79; Norma & Blaine Littlefield; Geraldine Littlefield; Sherry '79 & Craig '77 Littlefield; Faye Mack '99; Andrea Mann; Robert & Christine Martin; Mary Mayhew, Ronald Reed & Family; Jodi McGary '96; Jennifer McGowan '72; Jill McGowan '78; Jolene McGowan '76; Roger '70 & Dawn Ann McMann; Dora '68 & Steve Miles; Mayur Movalia; Jason Neal '99; Maryann Petela '99; Kristyn '99 & Josh Plamondon; Ricki Pomerleau '79; David '77 & Pat '77 Quint & Family; Janet Quint Sanford '81; Nancy Quint '79; Lorna Rowe '99; Donna & Larry Rowell; Steve '71 & Paula '73 Salley; Joey '98 & Lee Ann Salley; Jennifer Saucier '02; Cecelia Shatney '49; V. Travis Smith '99; Nellie Soloniewicz '57; Melodie Stanhope '81; Victory & Thomas Todd; Claude Tozier '99; Bob & Violet Trembly; Waldo County Oil & Propane (Jody Irish); Marisa Weinstein; Laura Williams '07; Janet Winchester '75

The Alumni Office has been notified of the passing of these members of the MCI Family:

Steven T. Mank '26
Avis Burgess Tedesco '30
Verna Merrithew Hanson '32
Katherine Cowan O'Reilly '33
Frank B. Homstead '35
Rita Bouchard Norton '39
Robert A. St. Pierre '39
Barbara McNeil Marsanskis '43
Ival R. Cianchette '44
Helmi Paakki Perry '44
Wayne Susi '45
Arline F. Dunton '47
Marjorie Pearl Simpson '48
John P. Dana '49
Robert F. Savage '49
Edward C. Ausplund '51
Barbara Ross Wollensak '51
Fredrick J. Donovan '52
Sandra Emerson Martineau '55
Wayne B. Ward '55
Frederick A. Gleason '59
William J. Grosser '64
Harry H. Huff '64
David H. Jamison '67
Philip H. Haigis '68
Kimberley B. Hunt '73
Mary Gerry Schissler '73
Robert N. Marcia '78
Rodney E. Bane '83
Brian L. McGinnis '88
Chad Buzzell '06
Richard F. Austin
Jeff Barnes
Theresa Kane
Jennifer Leonard
Bert L. Pratt

Our deepest condolences go out to the families and friends of those who have passed on.

The Advancement Office tries its very best to record accurately the names of alumni/ae and friends who have passed away. Please contact our office at (207) 487-5915 about the passing of alumni/ae or friends of MCI.

In Memoriam

Ival "Bud" Cianchette '44



Ival "Bud" Cianchette '44 passed away on November 5, 2009 after a brief illness. He was 83 years old. Bud was born on July 19, 1926, the fifth of Ralph and Edna Cianchette's seven children. While a student at MCI, Bud acted as the business manager for both the freshman board and the Trumpet, MCI's yearbook. He was very successful at prizespeaking, placing first in both his freshman and sophomore years. Bud was a member of the Hi-Y Club all four years at MCI, serving as the vice president of the club as a junior and president as a senior. He cared deeply about others and was voted "friendliest" in his class by his peers.

After graduating from MCI in 1944, Bud was drafted into the Army and went to Europe where he remained as part of the occupation forces until discharged in October 1946. Upon his return to Pittsfield he joined with his brothers and together they formed a new construction firm, Cianchette Brothers, Incorporated, the forerunner of today's Cianbro. Bud was President, Chairman, and then Chairman Emeritus from 1962 until his passing. With a natural instinct for business, the qualities of a true leader, and with uncompromising integrity, Bud, along with his brothers guided Cianbro into one of the most respected construction firms in the nation.

Bud remained very loyal to and supportive of MCI both personally and through Cianbro. In recognition of his support, Bud was inducted as a charter member of MCI's Hall of Fame in 1983.

John P. Dana '49



John Dana passed away on August 29, 2009, at Maine Veterans Home in Augusta, after a long illness. Born in Thomaston, April 23, 1930, he was the son of Harold and Helen Pulsifer Dana. Educated in local schools, he was a 1948 graduate of Thomaston High School. That next fall he attended Maine Central Institute in Pittsfield and for the next two years attended the University of Maine at Orono, until being drafted into the Maine Army National Guard. He served two years with the National Guard, and at the time of his discharge in June of 1952, had obtained the rank of Sergeant First Class. At that time, John returned to the University of Maine, where he earned a Bachelor of Science Degree in Education.

An avid sportsman, throughout his high school and college years John played baseball and basketball. For more than 28 years, he lived in Pittsfield where he raised his three children and taught them the game of golf. Throughout his career, he taught mathematics at Maine Central Institute. An accomplished golfer, John ultimately became a golf professional and was a member of the Professional Golfers Association of America of which he was honored as a Life Member. While at MCI he was active with the school's golf team.

Frank "Bud" Homstead '35



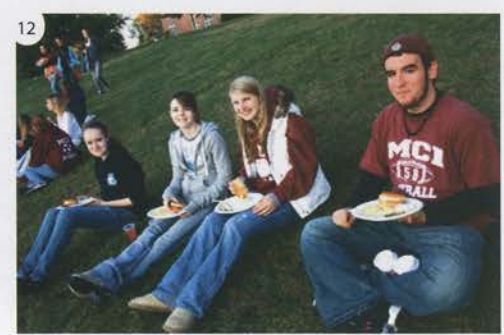
Bud Homstead passed away on July 11, 2009, just short of his 94th birthday. He was born in Palmyra on July 23, 1915, the son of Frank Lang Homstead and Mantie Holt Homstead. He attended schools in Corinna and Pittsfield, graduating from MCI in 1935.

While at MCI, Bud was the vice president of his freshman class and President of his sophomore, junior and senior classes. He was in the National Honor Society, played basketball and ran track.

Just after graduating, Bud went to work in the local IGA grocery store. In 1939 he and his wife, Tina, bought a general store in North Anson. In 1953 they opened a small grocery store in Newport. In 1955 they opened the first self-service supermarket in the whole region. After several expansions and opening new stores they retired and sold their stores in Pittsfield, Newport and Dexter. Those stores are now owned and operated by their son, Dean Homstead '69.

Over the years, Bud never forgot MCI. His stores became the center for MCI event ticket sales, he supplied food for club activities and was always ready to support MCI wherever he could. Bud became a member of the Board of Trustees, then Board President from 1976-1980. Bud was a member of MCI's Hall of Fame as well as a Distinguished Achievement Award recipient. His leadership and generosity helped get MCI through some very challenging times.

Homecoming



1. The Senior Class float in the Homecoming Parade
 2. Dylan Penney '10, Meg Adams '10, George Howe '10
 3. Colby Patterson '11, Jerry Zhang '11, Caleb Lasselle '11, Tyler Maloon '11, Brittney Glencross '11
 4. Jackie Chen, Eric Guo '12, Tommy Yau '12, Kevin Xia '11, Stephen Chen '12, Yue Jian '11
 5. Tessa Hathaway '10
 6. Nick Cook '10
 7. Clint Williams '86
 8. Courtney Ouellett '13, Madison Rossignol '13, Brittany Noble '13, Sarah Lagross '13
 9. Chauntel Ludden '10, Maggie Bryant '10, Jamie Lawler '10, Megan Ames '10, Rebekah Kallgren '10
 10. Georgias Papapetrou '10, Jordan Eastman '10
 11. Cheyenne Richardson '12, Cheyenne Carlsson '12, Matt Schafer '10, Autumn Casey '13, Megan Malaby '13
 12. Megan Malaby '13, Katrina Huckerby '11, Claire Kerr '11, George Howe '10

2009

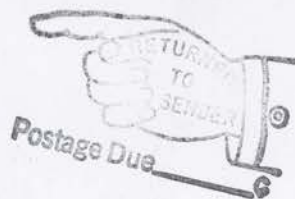


1. Shawn Bennett '10 2. Rebekah Kallgren '10, Leah Edmondson '12, Kassandra Brunette '11 3. Courtney Welch '10, Kristen Cote '10, Brenna Russell '11, Courtney Frost '10, Breezy Condon '12, Ashley Dionne '12, Jamie Hamm '13, Justine Dunphy '12, Meredith Berthelette '12 4. Colby Patterson '11, Jake Hunt '10, Clay Marcoux '11 5. Kristen Cote '10, Justine Dunphy '12, Brenna Russell '11 6. Allie Sinclair '12, Jessica Riley '11 7. Allie Sinclair '12, Jessica Riley '11, Ashley Kitchin '12 8. The MCI Husky watches the Homecoming Games. 9. Shawn Bennett '10 10. Brittany Seekins '13, Sadie Gerry '13, Amelia Connolly '13, Shannon Dacey '10, Melanie Arias '10 11. Leah Edmondson '12 12. Jake Hunt '10



MAINE CENTRAL INSTITUTE
295 MAIN STREET
PITTSFIELD MAINE 04967
www.mci-school.org

Address Service Requested



Nonprofit Org.
US Postage
PAID
Presort Express

*****5-DIGIT 04967
HANCOCK LUMBER COMPANY
INDUSTRIAL PARK
PITTSFIELD ME 04967

P-1 P35



PO Box 378

Save the Date!

Auction - June 18, 2010

Reunion Weekend - August 6 & 7, 2010

