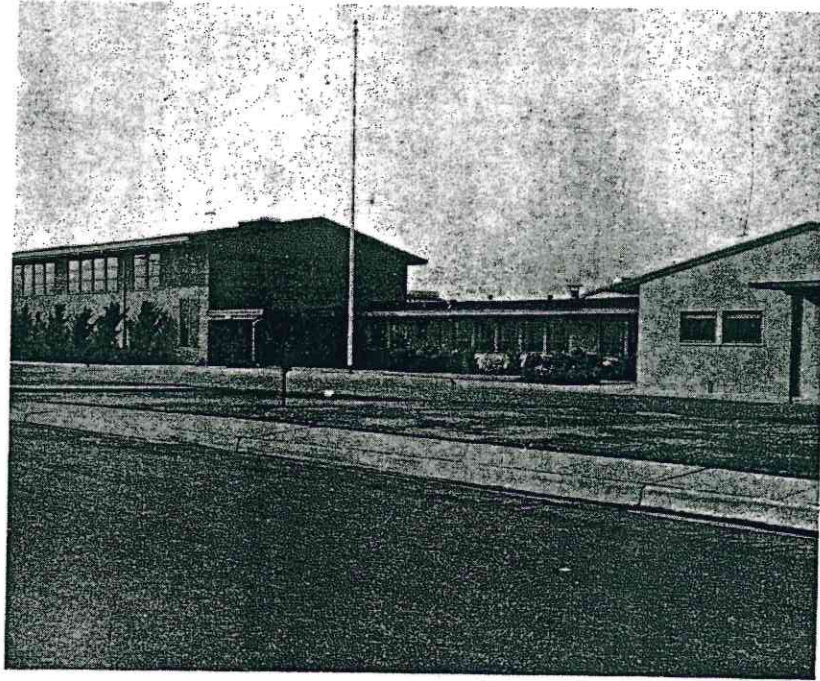


*Bellevue Elementary School
Santa Rosa, California*



*Kawana Elementary
Santa Rosa , California*

WILFRED SCHOOL

The Wilfred School was established for the 1913-1914 school year. One teacher, Constance Smith, was employed. There were 22 children enrolled for an average daily attendance of 20.

By 1948 the enrollment had gone to 37 children.

In 1949, the Wilfred School became part of the Bellevue Union School District. The new school plant was not finished as early as planned and it was necessary to maintain Grade One at the Wilfred School until the new school was completed in 1952.

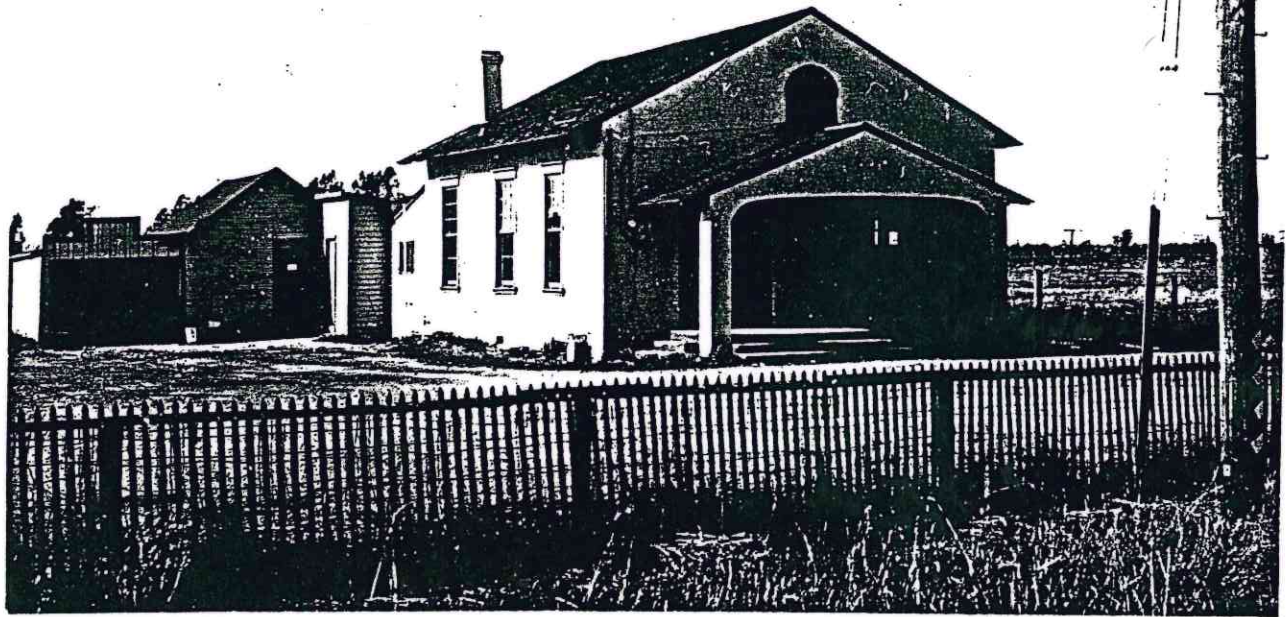
Teachers at the Wilfred School at the time it was unionized in 1949 were:

Mrs. Edith Rose
Mrs. Muriel Hensley

Following the opening of the new Bellevue School, Wilfred School was sold at auction to Mrs. Edna Chalmers.

1-15-68

nwt



WILFRED SCHOOL

HEARN SCHOOL

For the School Year 1867-1868, a total of 22 children were enrolled in the Hearn School with an average daily attendance of 18. There were 14 classes maintained for five school months. The total valuation was \$483.14. Mr. Julius Osh of Santa Rosa served as District Clerk.

The area was becoming more populated and in 1948 the enrollment was up to 65.

In 1949 the Hearn School became part of the Bellevue Union School District. The new school plant was not finished as early as planned and it was necessary to maintain Grades Three, Four, Five and Six at the Hearn School until the new school was completed in 1952.

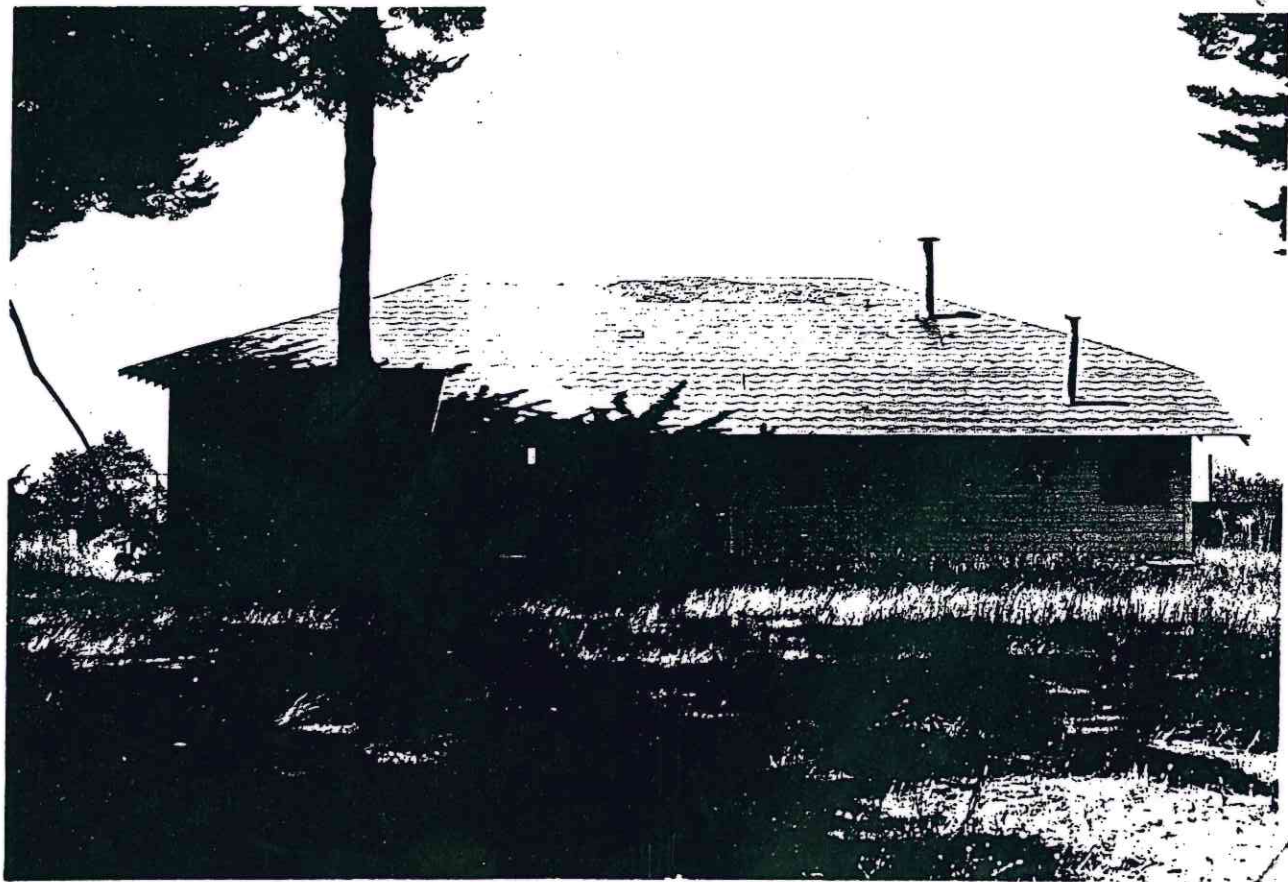
Teachers at the Hearn School at the time it was unionized in 1949 were:

Grade Three - Mrs. Sylvia Begley
Grade Four - Mrs. Marjorie Badger
Grade Five - Mrs. Mabel Anderson
Grade Six - Melbourne Bynon (Mr. Bynon is still in the district - currently teaching a sixth grade at the Kawana School)

Following the opening of the new Bellevue School, Hearn School was sold at auction to Mr. Sam McMillan.

1-15-68

nwt



HEARN SCHOOL

STEBEN SCHOOL

The earliest known settlers in the Steuben Area were Mr. and Mrs. Tom Hopper and their family who came to the area in 1846. No further information is available regarding the Hoppers.

In 1852, Robert and Richard Crane came to this section. When they settled here, they thought they were on government land, but discovered it was a grant and so they purchased it. Their hope was to raise stock to be sold in the mines of the Sierras and believed in this little settled area. They felt that here they would never have to fence pasture land and their cattle could graze for many miles. The Crane Family has been very active in the area. Mrs. R. L. Crane served as a teacher in the Steuben School during 1886 and 1887; Mr. George Crane served on the Board of Trustees of the Bellevue Union School District from 1957 until 1962.

Another early settler to the area was Mr. I. F. Cook who came in 1853 from Missouri. He married the former Eliza Hopper and spent the remainder of his life on the ranch where he had first settled.

County records reveal that the Steuben District was formed on May 5, 1864, and 2.5 acres of land were purchased from the Cotati Land Company for this district on July 20, 1864. It is believed the name Steuben was chosen by some admirer of Baron Von Steuben, a Prussian General, who aided the colonies in their struggle for independence.

The first written record available is the register of the years 1871-1872. However, the names of some former teachers were obtained - among these were Mrs. Fishburn, Mr. McClimans, a former San Francisco Superintendent of Schools, Miss Weeks, Mr. Hunter, Miss Anderson, Jim All and Mr. Morrison. The following teachers were also employed:

1871-1872	A. B. Ware
1877	J. N. Davies and E. W. Davies
1878	A. G. Burnett and W. W. Davidson
1879	W. W. Davidson, W. B. Furan, and E. C. Morris
1880-1881	L. P. Canfield
1884-1885	Ada MacDuffie
1886	Ada MacDuffie, Maggie Mahone, Angelina Chambaud
1887	Mrs. R. L. Crane and Angelina Chambaud
1888	Mrs. R. L. Crane and Mary Leddy
1889-1890	Mary Leddy
1892	Miss Lulu Fulkerson
1893-1894	Miss Sadie Gray
1897-1898	Miss Lulu Heimbauch
1899	Minnie Cazad
1900-1901	Carolyn Dunbar
1902	Katheryn Slites
1906	Caroline Reeves and Ethel Lehman
1907-1910	Ethel Lehman
1911-1912	Miss Alice M. Kahl
1913-1914	Miss Mary Ahl
1916	Eva Holland
1918	Bernice Rowe
1910-1920	Frances Linderman
1921-1922	Goldie Bauhman
1923-1925	Irene Buford
1926-1927	Mrs. Ruby G. Wilson
1928-1952	Miss Elizabeth Letold

(This is not a complete list since some attendance registers are missing.)

Many of these teachers later became known throughout the state for their accomplishments. Among those were, A. G. Burnett, who became a Judge of the Superior Court; A. B. Ware, who was a prominent attorney in the area; E. W. Davis became County Superintendent of Schools in 1895. Other teachers went on to other assignments in the county.

Conditions in the early days were very different from the diversified programs of today. The old registers for classes reveal there were not so many classes in each subject - one register listed only three classes in reading. Neither music nor drawing had a place in the course of study but records for behavior, both best and worst, were kept. Corporal punishment seemed to be used a great deal for such faults as smoking, truancy, disobedience, impudence, negligence and "general cussidness".

Attendance in the school varied greatly in the early years as shown by the following records:

Enrolled in 1871	38
Enrolled in 1885	19
Enrolled in 1895	6
Enrolled in 1905	11
Enrolled in 1918	24

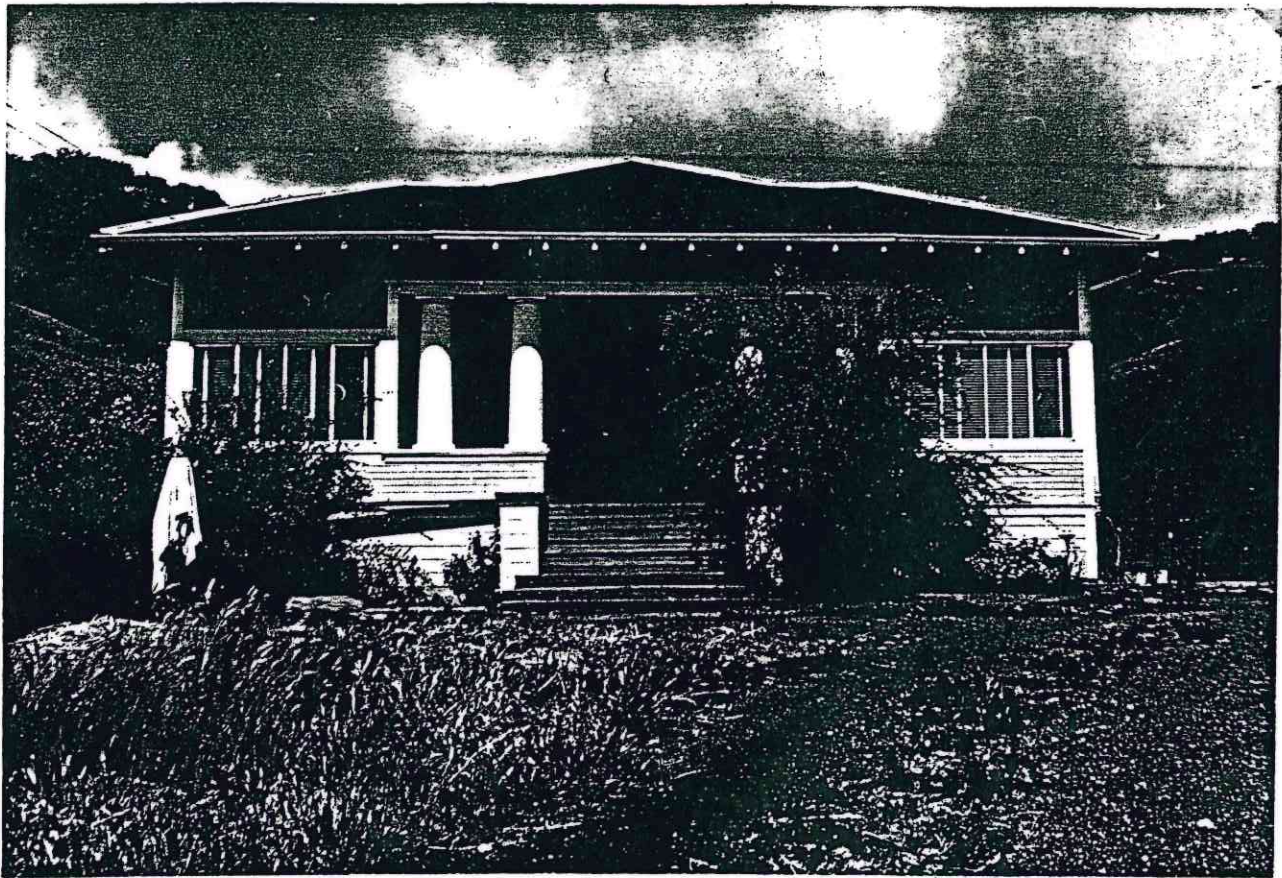
In 1931 the attendance dropped to 13 but climbed back up to 20 and remained there for many years.

County records reveal that for the 1867-1868 School Year, 46 children were enrolled and an average daily attendance of 25. There were 16 classes which were maintained for 5½ school months. A total of \$70 was paid in teacher salaries that year; total receipts were \$261.44; total expenditures were \$258.18; and Mr. P. H. Pickleff of Santa Rosa served as District Clerk of the school.

Many former students still reside in the district; members of the original Crane, Cook, Savory, Dunton and Peterson Families. Mrs. Lulumay Comstock, a former student of the school and a member of the original Crane Family, served on the Board of Trustees of the Bellevue Union School District from 1963 until 1967.

Miss Elizabeth Letold was the only teacher employed by the Steuben School from 1928 until 1945 when enrollment so increased (about 40 students) that it became necessary to employ another teacher. Miss Letold's sister, Mrs. Edith Rose, became the primary teacher. After 1949, the seventh and eighth grades no longer attended the school, but instead went to Junior High in Santa Rosa.

In 1949 the Steuben School became part of the Bellevue Union School District; however, the new school was not completed as early as been planned, and it was necessary for the district's second graders to attend Steuben. This arrangement lasted until 1952 when the children were able to move into the new building and the original building and site were sold at auction to Mr. and Mrs. Jack Henninger. Mr. and Mrs. Henninger made their home in the renovated school building.



STEUBEN SCHOOL

TODD SCHOOL

Earliest records for the Todd School, also known as Valley View School, that are available are for the school year 1856-1857. During this year school was maintained for 4½ months.

In the School Year 1867-1868 46 children were enrolled with an average daily attendance of 25. Two teachers were employed. Total expenditures for that school year were \$258.18 and total receipts were \$261.44. Mr. P. H. Rickleff served as District Clerk.

By the year 1948, the enrollment had reached 173.

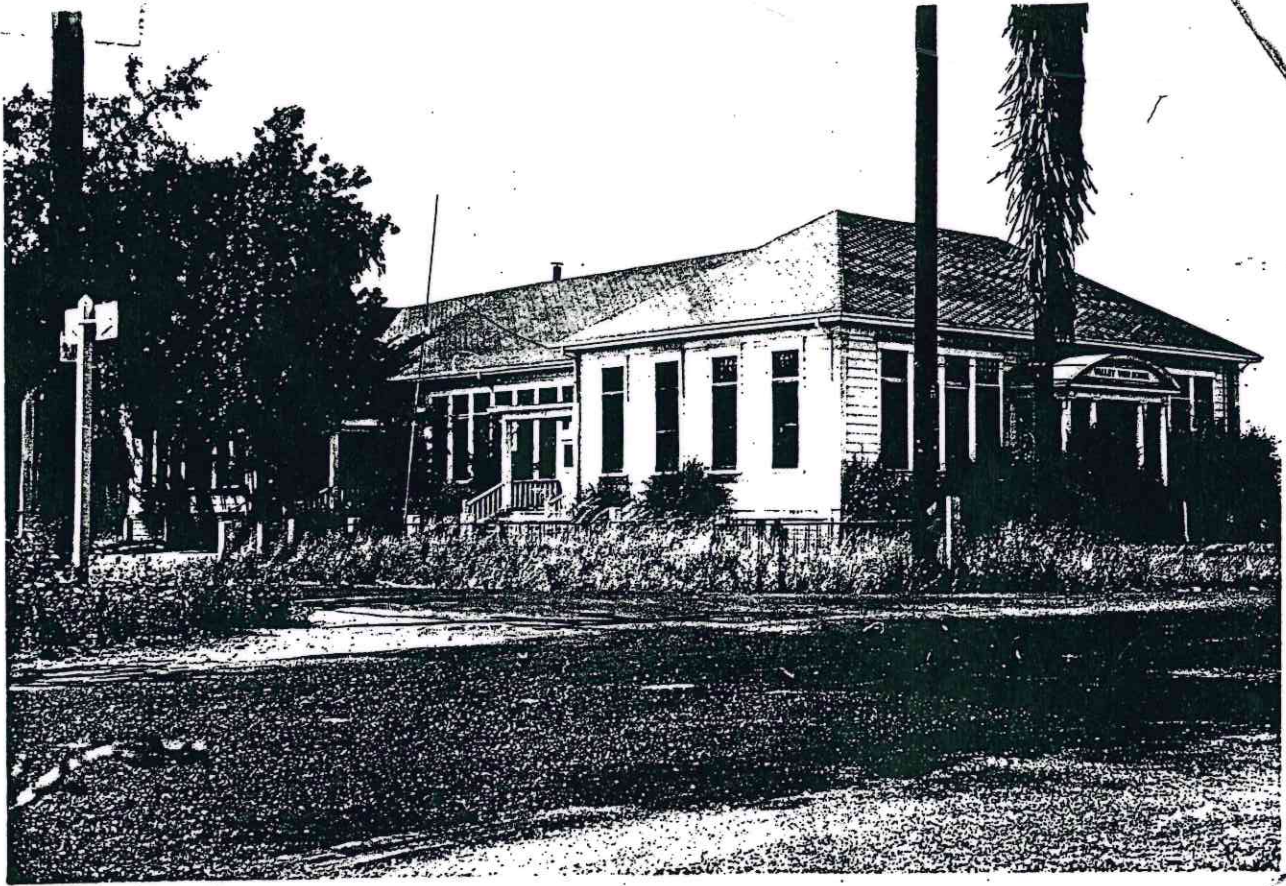
In 1949 the Todd School became part of the Bellevue Union School District. The new school plant was not finished as early as planned and it was necessary to maintain portions of Grade One through Six here until the new school was completed in 1952.

Teachers at the Todd School at the time it was unionized in 1949 were:

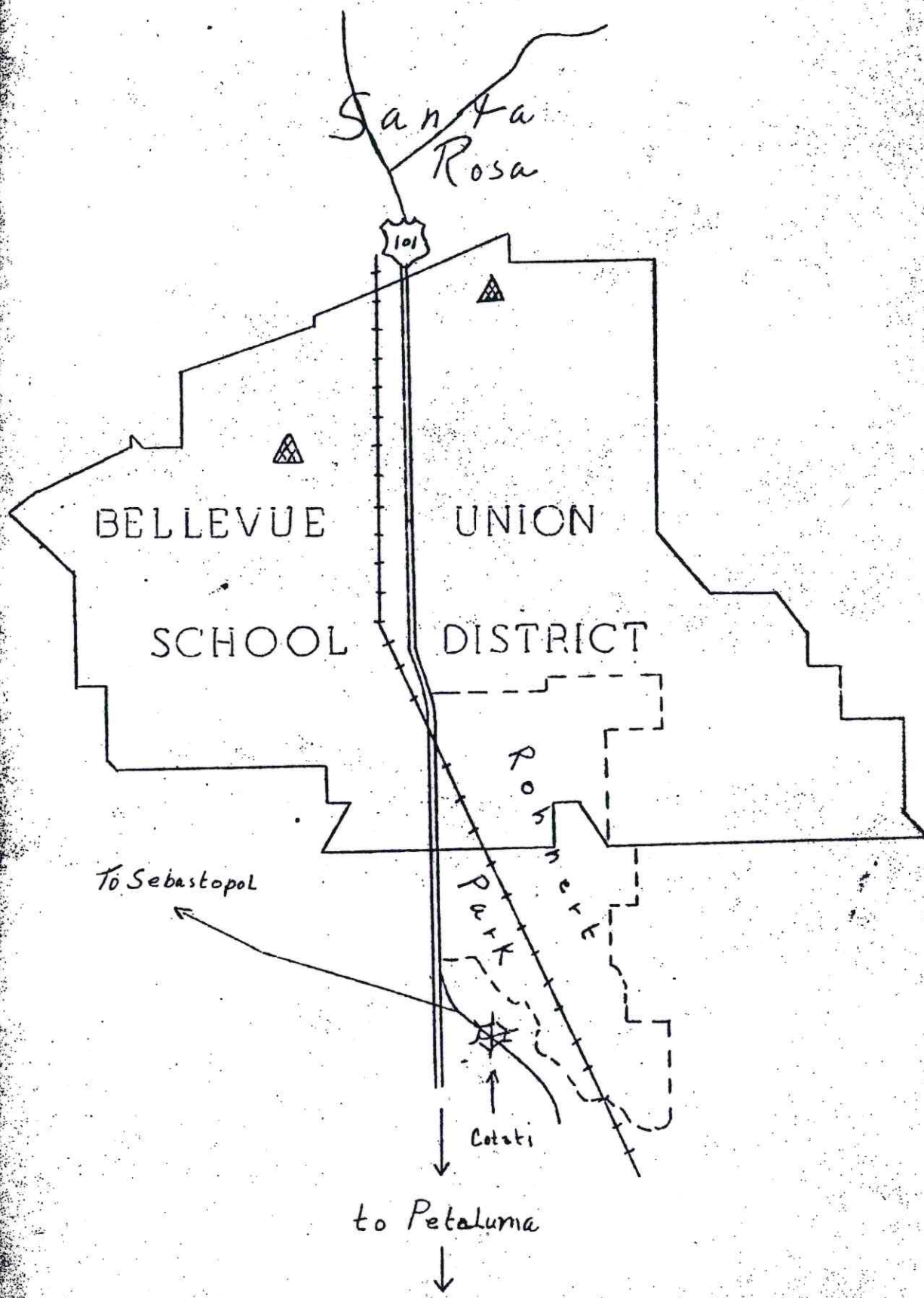
- Mrs. Ruth Leepin - Grade One (Mrs. Leepin is still employed in the district as a First Grade teacher in the Kawana School.)
- Mrs. Maxine Crawford - Grade Two
- Mrs. Emily Becklund - Grade Three (Mrs. Becklund is still employed in the district as a Kindergarten teacher in the Kawana School.)
- Mr. Stacy Lee - Grade Four (Mr. Lee went on to become principal of the Kawana School when it was built in 1954.)
- Mrs. Lucille Martinelli - Grade Five
- Mrs. Linda Jobe - Grade Six (Mrs. Jobe later became teacher and administrative assistant in the Bellevue School until her retirement in 1954.)

Following the opening of the new Bellevue School, Todd School was leased to the Office of the County Superintendent of Schools for Special Education. In 1960 after the County Superintendent Office no longer needed the facilities, Todd School was sold at auction to the Unitarian Fellowship of Sonoma County.

1-15-68
nwt



TODD SCHOOL



BELLEVUE UNION SCHOOL DISTRICT

The Bellevue Union School District was established when the residents of the Steuben, Todd, Wilfred, and Hearn School Areas voted to unionize in a general election on January 11, 1949, and was officially named the Bellevue Union School District on January 21, 1949. Governing Board Members at that time were:

Blaine Amsberry
Mario Balestra
George Haber

Frank Hill
D. T. Mitchell

Mr. Leo Gurevitch joined the Governing Board for the School Year 1950-1951. It was decided these four schools would be combined or unionized into one large school; therefore, the building of a new plant began. During the construction of the new school, classes for children of the areas were conducted as follows:

Grade One at the Wilfred School,
Grade Two at the Steuben School,
Grades Three, Four, Five and Six at the Hearn School,
and, Todd School had Grades One through Six.

It was necessary to bus the children to their respective schools.

In 1951, Mr. Frank Schieber was hired as the first superintendent of the newly organized district and made his office in the Hearn School. Mr. Schieber also served as principal of the other schools with the exception of Todd School which had Mrs. Linda Jobe as it's principal. Mrs. Jobe had taught formerly in the Steuben and Todd Schools. She remained in the district until her retirement in 1954.

Enrollment in the four schools of the district was 541 at this time.

On August 31, 1952, the formal dedication of the Bellevue School at 3223 Primrose Avenue was held. The benediction at the ceremonies was offered by the Rev. Nicholas Shirosky of St. Mary's Orthodox Catholic Church which is still located on Mt. View Ave. in the district. Members of the Governing Board at the time were:

D. T. Mitchell
George Haber
Mario Balestra

F. Blaine Amsberry
Leo Gurevitch

The superintendent moved his office from the Hearn School to the new school and the District Office remained there until October of 1966 when it was moved into a portable building at the Kawana School to give the Bellevue School more classroom space.

Some beginning teachers at the Bellevue School were:

Melbourne Bynon - Sixth Grade (Mr. Bynon is still in the district - he teaches a Sixth Grade at the Kawana School)
Ruth Leepin - First Grade (Mrs. Leepin is still in the district - she teaches a First Grade at the Kawana School)
Elizabeth Letold - Second Grade (Miss Letold taught in the Kawana School until her retirement in 1966)
Emily Becklund - Kindergarten (Mrs. Becklund is still in the district - she teaches a Kindergarten Class at Kawana School)
Lucille Martinelli - Fourth Grade
Beth Bacon - Kindergarten

The superintendent served as principal of the new school with Mrs. Linda Jobe as Administrative Assistant. A cafeteria offered the children hot lunches. Mrs. Stella Kidwell served as Head Cook at the Bellevue School until her retirement in 1965.

Records reveal the four original schools were sold at auction:

Mr. and Mrs. Jack Henninger purchased the Steuben School and remodeled it into a home,
Mr. Sam McMillan purchased the Hearn School,
Mrs. Edna Chalmers obtained the Wilfred School,
and, Todd School was leased to the Superintendent of Sonoma County Schools for Special Education Classes until 1960 when it was sold at auction to the Unitarian Fellowship of Sonoma County.

Population of the district grew rapidly and in late 1952 plans were begun for the acquisition of an additional school site. On November 21, 1952, the Governing Board agreed to an option for ten acres of land for a new school site adjacent to the Stellar Gardens Subdivision. The enrollment in the Bellevue School was near 700 at this time and additional classroom space was badly needed. Temporary classes had to be set up in the Multipurpose Room after January of 1953. Final plans for the new school were approved on August 3, 1953, and the contract was awarded on September 11, 1953, and work began.

In September of 1954, the new school was ready for use. Many names were suggested and the Board chose the Indian name Kawana. Governing Board Members at this time were:

F. Blaine Amsberry
Mario Balestra
Leo Gurevitch

George Haber
Bryan Oldfield

When the doors opened for school on September 16, 1954, Mr. Stacy Lee, a former teacher at the Bellevue School, was the principal with the following teachers employed:

Mrs. Emily Becklund, Kindergarten
Miss Genetti, First Grade
Mrs. Geary and Miss Elizabeth Letold, Second Grade
Mrs. Begley, Third Grade
Mrs. Badger, Fourth Grade
Mrs. Anderson, Fourth and Fifth Grades
Mrs. Meyers, Fifth and Sixth Grades

A full course of study was offered at the new school. Special Education Classes were also housed in the school. A full cafeteria was in operation with Mrs. Mildred Cheli as Head Cook. Mrs. Cheli is still with the district in this position.

Enrollment at the Kawana School at this time was 294.

With the increase in enrollment, it became necessary to employ a principal for Bellevue School. Mr. Jack Klippensteen joined the staff in this position for the 1962-1963 school year.

In 1963, Mr. John Durr replaced Mr. Klippensteen and is currently serving as Principal of the Bellevue School.

(Continued)

In July of 1964, Mr. Loren Thompson joined the staff replacing Mr. Schieber as Superintendent.

Following Mr. Stacy Lee's retirement in July of 1967, Mr. Ray Ferro joined the staff of the Kawana School as the principal.

Beginning in the Spring of 1966, the Bellevue District was approved for an Exemplary Program for Mental and Physical Fitness. Under the Elementary and Secondary Education Act of 1965, the district had been approved for federal assistance for a Title I Program for Curriculum and Cultural Enrichment and libraries for each school, plus special classes to be offered to needy children.

The above programs are currently in full operation in the district with special help classes being offered for many problem areas. There are classes in each of the schools for the Educationally Handicapped, the Mentally Retarded, plus special reading teachers for assistance to children with reading difficulties. The district received the additional reading teachers under the Miller-Unruh Act in 1966.

Special teachers are employed to help children who have learning disabilities; a speech teacher is employed for two days per week; a nurse for four days per week; a Community School Program, started by interested and concerned people in the district and supported by volunteers with some help from the Title I Program, is offering many evening classes of a wide variety. Also under the Title I Program, the district has a fully equipped library at each school with approximately 2,600 books available to children and teachers in each school. The libraries are open on scheduled evenings under the Community School Program for study purposes. The district also employed a Director of Instruction under the Title I Program for advancement and enrichment of the curriculum of the two schools. Mr. Robert Garmston served the district in this capacity until January of 1968 when he became Acting Superintendent replacing Mr. Loren Thompson.

Under the Mental and Physical Fitness Program, children are helped in the areas of perception, body awareness, movement control and physical fitness. Mr. Mel Solie, a former teacher at the Bellevue School, serves as director of this program.

Current enrollment in the district is 1377 as compared to that of the original three schools (Hearn, Todd, and Steuben - Wilfred was not established until 1913) of 68. The district now employs 116 people - quite a change from the four employed one hundred years ago!

Enrollment this January is 50 greater than in January of 1967. If attendance continues to grow, the district may face double sessions next year as both schools are operating now to capacity. If the new sewer line brings increased building to the area, a third school may become a necessity in the near future.

Since it's beginning, the Bellevue District has striven to offer the children entrusted to it's care the very best in learning experiences, opportunities, equipment, leadership, and facilities possible and will continue to strive toward this goal and accept this challenge for the future.

GOVERNING BOARDS

District Clerks at the time of unionization of the Bellevue Union School District in 1949 were:

Todd School - George Haber
Steuben School - Leslie Crane
Hearn School - Mario Balestra
Wilfred School - J. B. Freitas

Since that time the following officials have served:

1949-1950 - George Haber
Mario Balestra
Frank Hill
F. Blaine Amsberry
D. T. Mitchell

1950-1951 - D. T. Mitchell
Mario Balestra
Frank Hill
Leo Gurevitch
F. Blaine Amsberry

1951-1952 - D. T. Mitchell
Mario Balestra
Leo Gurevitch
George Haber
F. Blaine Amsberry
Supt. & Scty. to the Bd., Frank Schieber

1952-1953 - F. Blaine Amsberry
Mario Balestra
D. T. Mitchell
Leo Gurevitch
George Haber
Supt. & Scty. to the Bd., Frank Schieber

1953-1954 - F. Blaine Amsberry
Mario Balestra
Bryan Oldfield (to fill unexpired term of D. T. Mitchell)
Leo Gurevitch
George Haber
Supt. & Scty. to the Bd., Frank Schieber

1954-1955 - F. Blaine Amsberry
Mario Balestra
Bryan Oldfield
George Haber
Leo Gurevitch
Supt. & Scty. to the Bd., Frank Schieber

1955-1956 - Leo Gurevitch
Mario Balestra
George Haber
Bryan Oldfield
F. Blaine Amsberry
Supt. & Scty. to the Bd., Frank Schieber

(Continued)

- 1956-1957 - George Haber
Mario Balestra
F. Blaine Amsberry
Leo Gurevitch
Bryan Oldfield
Supt. & Scty. to the Bd., Frank Schieber
- 1957-1958 - F. Blaine Amsberry
Mario Balestra
Walter Hendrickson (New Member)
George Crane (New Member)
Carter Maxwell (Replacement for F. Blaine Amsberry who passed away)
George Haber
Supt. & Scty. to the Bd., Frank Schieber
- 1958-1959 - Mario Balestra
Walter Hendrickson
Mrs. Lela McCoy (New Member)
Jack Hoeck (New Member)
George Crane
Supt. & Scty. to the Bd., Frank Schieber
- 1959-1960 - George Crane
Jack Hoeck
Walter Hendrickson
Mrs. Lela McCoy
Louis Pelissier (New Member)
Supt. & Scty. to the Bd., Frank Schieber
- 1960-1961 - Walter Hendrickson
George Crane
Jack Hoeck
Mrs. Lela McCoy
Mrs. Wilma Graham (Replacement for L. Pelissier who resigned
6/20/60)
Supt. & Scty. to the Bd., Frank Schieber
- 1961-1962 - George Crane
Wilma Graham
Walter Hendrickson
Joseph Lang (New Member)
Ervin H. Schuck (New Member)
Supt. & Scty. to the Bd., Frank Schieber
- 1962-1963 - Ervin Schuck (Resigned 4/18/63 - replaced by Mrs. Rina Vatuone)
Wilma Graham
Joseph Lang
Walter Hendrickson (Became Acting President when Ervin Schuck resigned)
George Crane (Resigned 10/18/62 - replaced by Ruth Bond)
Supt. & Scty. to the Bd., Frank Schieber
- 1963-1964 - Walter Hendrickson
Wilma Graham
Mrs. Lulumay Comstock (New Member)
Joseph Lang (Resigned 5/20/64)
Rina Vatuone
Supt. & Scty. to the Bd., Frank Schieber

(Continued)

- 1964-1965 - Walter Hendrickson
Wilma Graham
Louis Zamaroni (Replacement for Mr. Lang)
Rina Vatuone
Lulumay Comstock
Supt. & Scty. to the Bd., Loren H. Thompson
- 1965-1966 - Walter Hendrickson
Lulumay Comstock
Wilma Graham
Rina Vatuone
Louis Zamaroni
Supt. & Scty. to the Bd., Loren H. Thompson
- 1966-1967 - Walter Hendrickson
Rina Vatuone
Louis Zamaroni
Lulumay Comstock
Wilma Graham
Supt. & Scty. to the Bd., Loren H. Thompson
- 1967-1968 - Rina Vatuone (Term expires July 1, 1969)
Wilma Graham (Term expires July 1, 1969)
Louis Zamaroni (Term expires July 1, 1969)
Peter Mazzucchi (Term expires July 1, 1971)
Charles Nader (Term expires July 1, 1971)
Supt. & Scty. to the Bd., Robert Garmston (Replacement for
Loren Thompson who resigned 12/31/67)

1-17-68

nwt



Miss Elizabeth Letold

Taught in Steuben,
Bellevue, and Kawana
Schools until her re-
tirement in 1966



Mrs. Emily Becklun

Taught in Todd,
Bellevue and is
currently a
Kindergarten teach
in Kawana School



Mr. Melbourne Bynon

Taught in Hearne, Bellevue, and is
currently teaching a Sixth Grade at
Kawana School



Mrs. Ruth Leapin

Taught in Todd, Bellevue, and is currently
teaching a First Grade at the Kawana School



BELLEVUE SCHOOL
1963 to Present

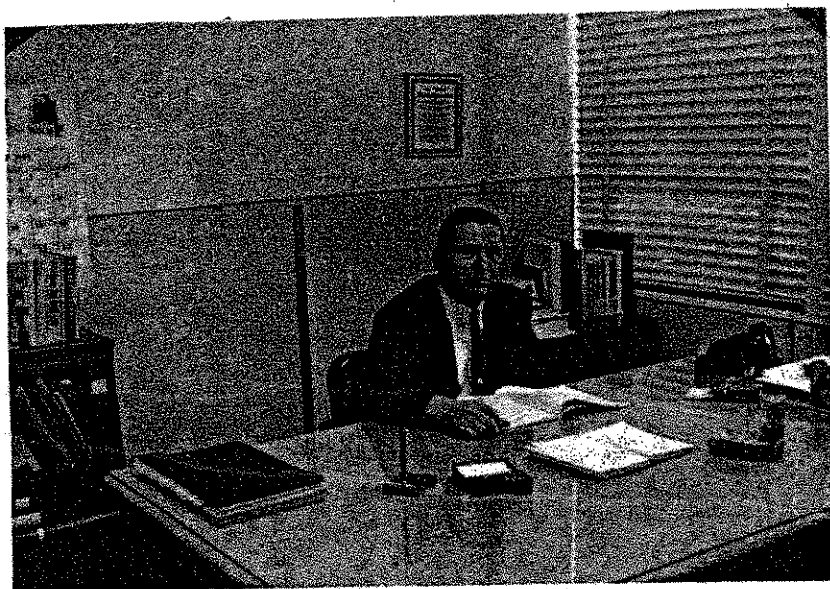
Mr. John Durr, Principal



Mr. Stacy Lee, Principal
KAWANA SCHOOL
1954 to July 1967



Mr. Raymond Ferro, Principal
KAWANA SCHOOL
July 1967 to Present



Mr. Loren Thompson
Superintendent

1964 to Dec., 1967



Mr. Robert Garmston
Director of Instruction
Bellevue District
Feb. 1966 to Dec. 1967

Acting Superintendent
Dec. 1967 to Present