



Don't Let The Bed Bugs Bite!!!

What Every School Community Needs To Know



Dr. Susan C. Jones
Associate Professor

Bed Bugs

(*Cimex lectularius*)

- External parasites
- Blood feeders
- Typically feed at night
- Prefer to feed on humans
- Also may feed on
 - rodents
 - bats
 - birds
 - pets (cats, dogs, etc.)



Bed bugs are very good hitchhikers!

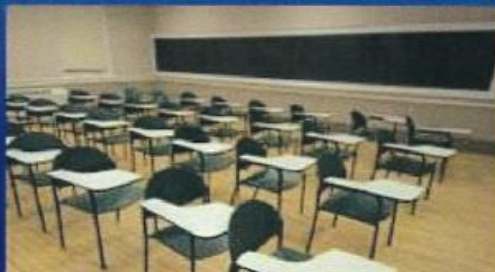
- Clothing
- Backpacks
- Purses
- Books
- Other items carried into schools



Schools typically have bed bug problems when students or staff introduce bed bugs from infestations occurring in their homes.

BE PROACTIVE

- Educate the school community on bed bugs
- Promptly respond to a bed bug case



Fact? or Fiction?

Fiction!!!



“If someone has bed bugs, it is because of their bad housekeeping habits.”

Fact!!!



Even the best housekeeper can have a bed bug problem. However, clutter can greatly interfere with control efforts.

Some Reasons For the Resurgence of Bed Bugs

- International travel and commerce
- High tenant turnover
- Pesticide use has changed
 - Pesticide bans
 - Baits to control ants & cockroaches
- Insecticide resistance

--IDENTIFICATION--

Shape and Size



- Beak-like mouthparts
- Oval shaped
- Body flattened (unfed bed bug)
- Body swollen after feeding
- Adults: ~1/4 - 3/8 inch long
- Young nymphs (immature bugs are tiny (<<1/10 inch long))

BED BUG HABITS

- Cannot fly
- Can walk very fast
- Can cling tightly to surfaces

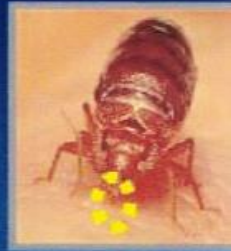
Not caused by bad housekeeping!!
Not a sign of uncleanliness!!

BED BUG FEEDING HABITS

- **Blood feeders**
 - Humans (preferred host)
 - Rodents, bats, birds, pets
- **Attracted by carbon dioxide & body heat**
- **Typically feed at night**



Recognizing Bed Bug Bites



- Resemble bites from other insects & arthropods
- Typically no red spot at the center (such as with fleas and black flies)
- Typically occur on exposed skin
 - Neck and face
 - Shoulders and arms
 - Etc.
- Rarely occur on the palms or soles (such as with scabies mites)
- Often occur in rows or groups
- Confirmation based on finding bed bug evidence

BED BUG HABITS

- Hide during the day
- Hide in dark, protected sites
- Prefer fabric, wood, and paper surfaces



BED BUG HIDING PLACES

- Mattress, box springs
- Bed frame
- Furniture
- Cracks and crevices
 - Carpet tack strips
 - Baseboards
 - Window frames and door frames
 - Electric outlets and switch plates
 - Wall hangings
 - Drapery pleats
 - Peeling wallpaper
 - Ceiling moldings
 - etc.

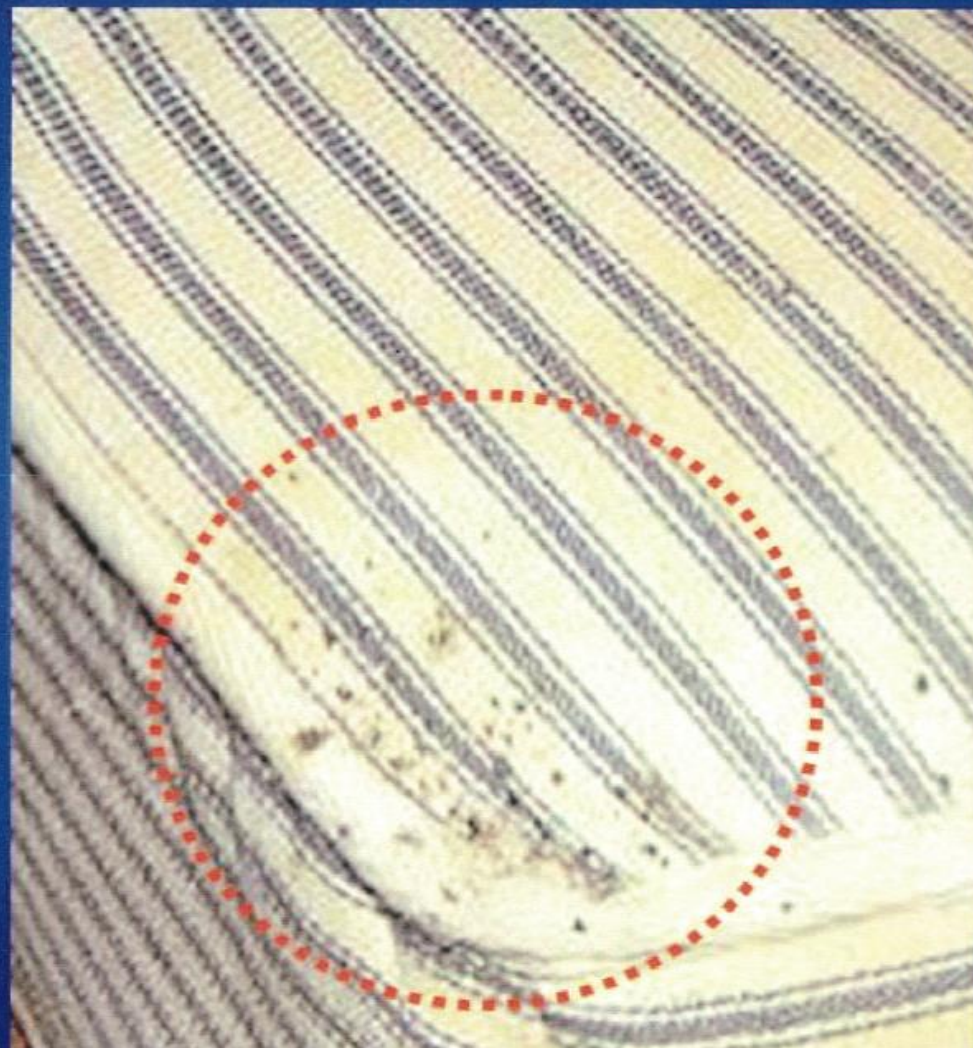


Recognize the telltale signs of bed bugs!

- Welts on exposed skin
- Black fecal spots
- Shed skins & eggshells
- Live bed bugs (nymphs & adults)
- Blood stains from crushed bugs



TELL-TALE SIGNS OF BED BUGS



BED BUG PREVENTION AT HOME

Don't bring infested items home!

- Inspect clothing and luggage of travelers
- Inspect secondhand beds, bedding, furniture, & clothing

