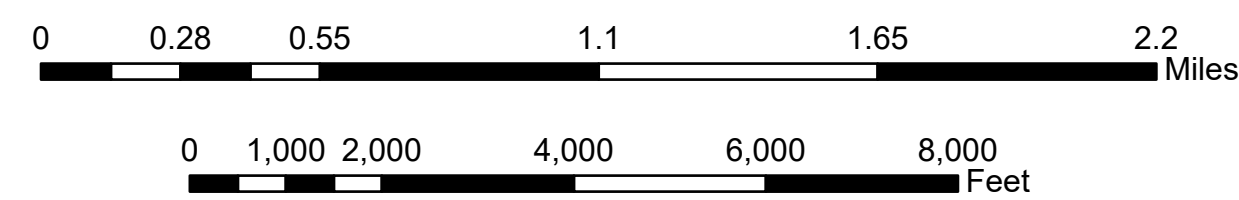
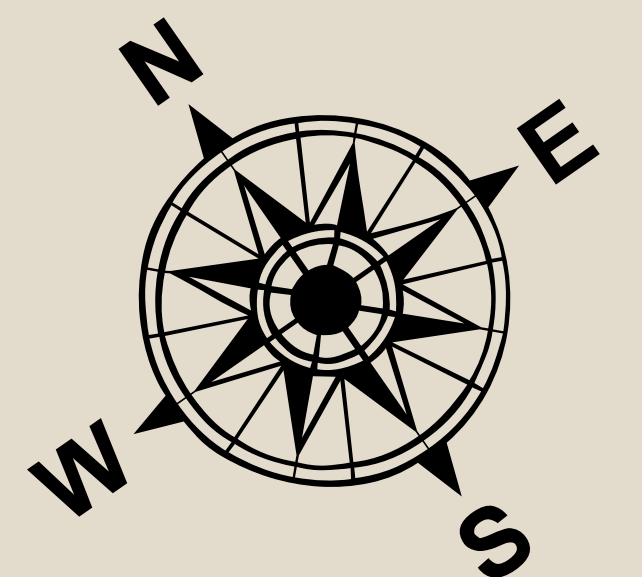


# Town Of Scarborough Maine Official Shoreland Zoning Map



**Shoreland Zoning Classifications**

- Stream Protection 1
- Stream Protection 2
- Shoreland Zoning
- Zoning

**Base Map**

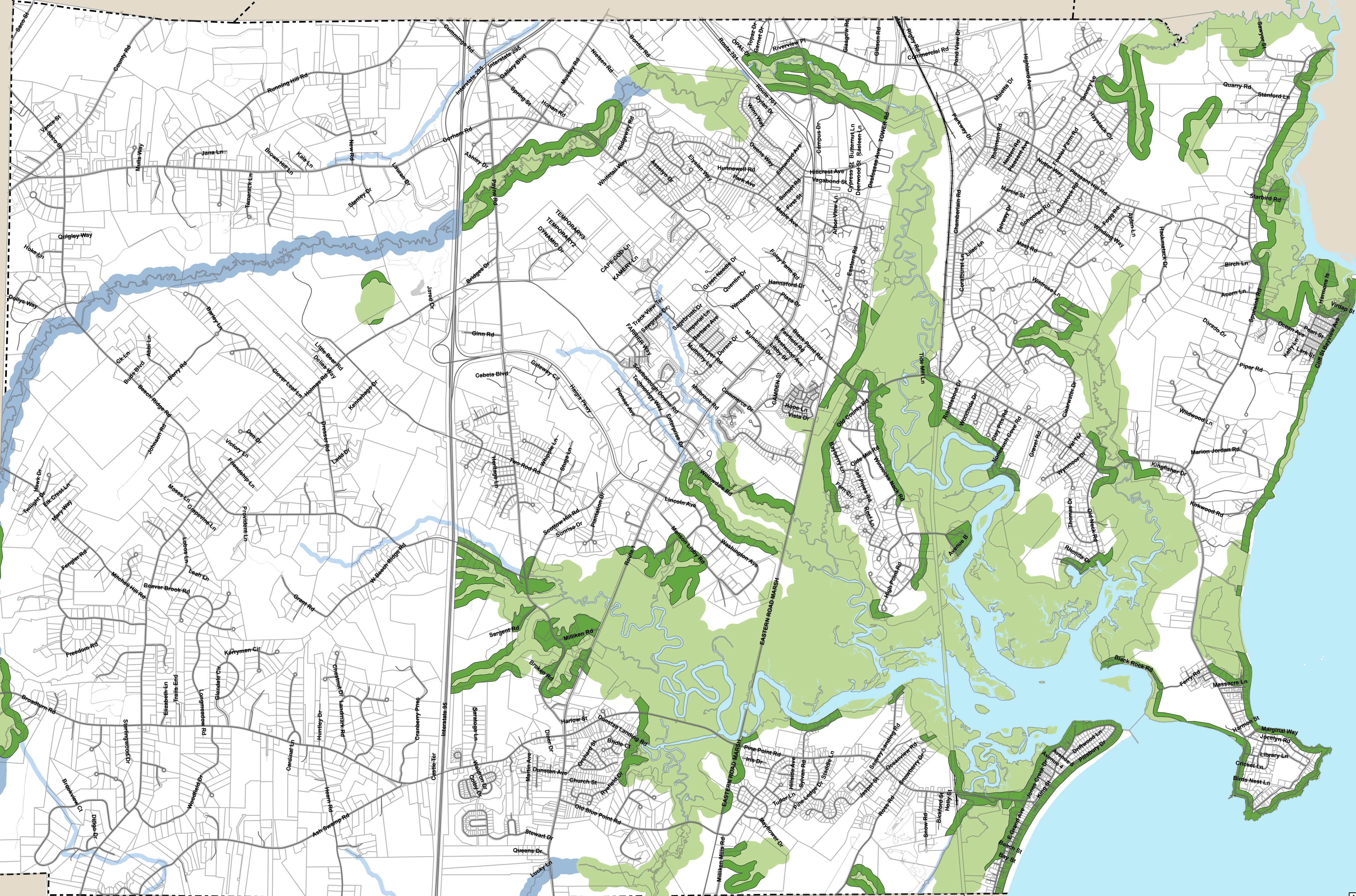
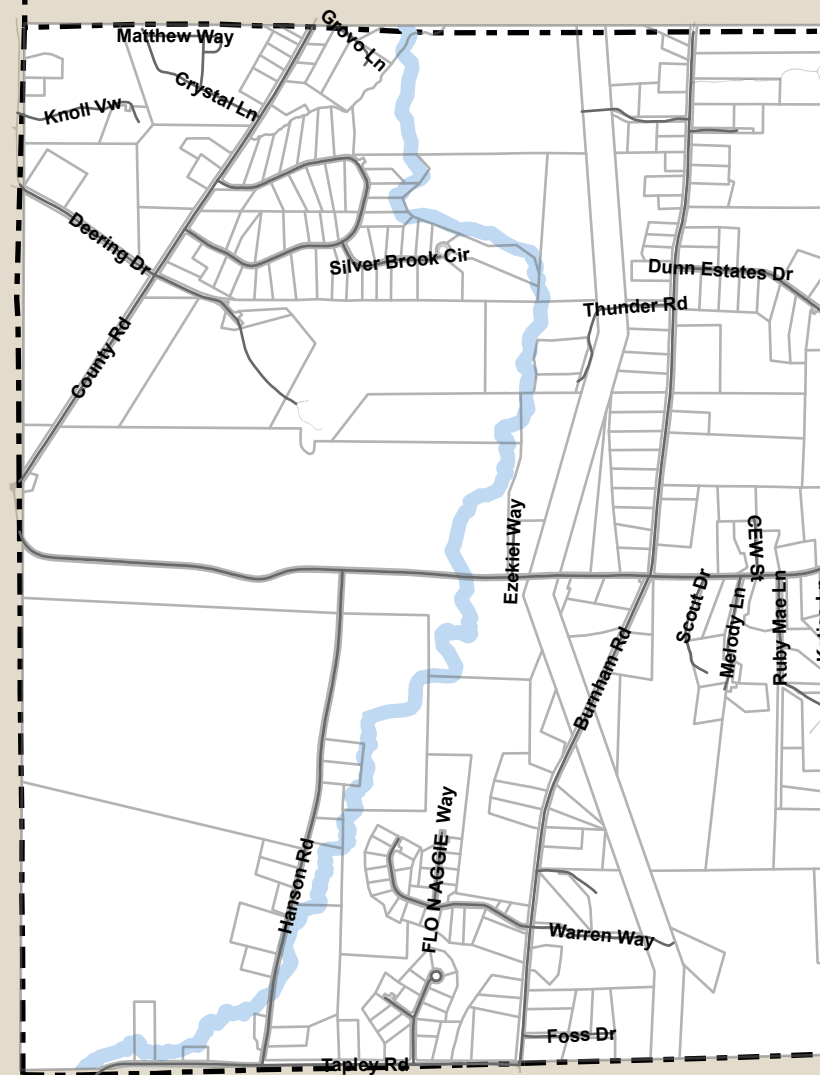
- ParcelLine
- Roads
- Coast\_Line
- - - TownLine
- Railroads
- Beachs

Note: The depictions of the boundaries of the Zoning Districts, including the Shoreland Zone, Resource Protection Zone, and Stream Protection District on this GIS Zoning Map, are merely illustrative of their approximate boundaries. The exact boundaries shall be determined by on-site inspection and measurement from the normal high-water line or upland edge of a wetland.

As of 4/19/2023

As Approved by Town Resolution - Resolution 23-001

**Zoning Amendments:**



Map Prepared By:  
Micah Warnock, GISP  
GIS Administrator

See "Town of Scarborough Maine Official Shoreland Zoning Map" for Shoreland zoning districts.

Attested to by:  
*Uplander Justice*  
TOWN CLERK  
4/24/2023  
DATE



Official Zoning Map and Official Shoreland Zoning Map

I do hereby attest that the above-mentioned maps accepted by the Town Council at the April 19, 2023 Town Council meeting are a true reflection as to what is on file with the Town Clerk and the Planning/Codes Office.

*Yolande Justice*

Dated this 24<sup>th</sup> day of April, 2023