



MAP[®] GROWTH

A Blueprint for Learning

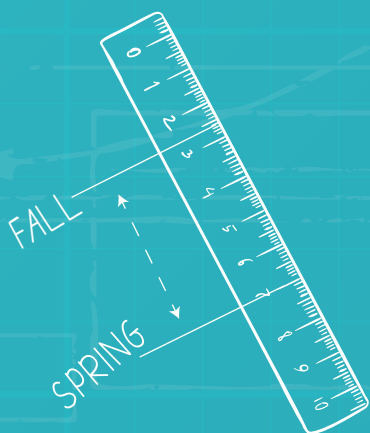
**Klein ISD teachers & students are building
PERSONALIZED LEARNING PATHS
with the MAP[®] Assessment.**



WHAT IS MAP[®]?

MAP[®], short for *Measures of Academic Progress[®]*, is an online assessment tool for personalized learning. K-8* students take the assessment three times a year in Reading, Math & Science.

*A limited number of high school students may take the assessment

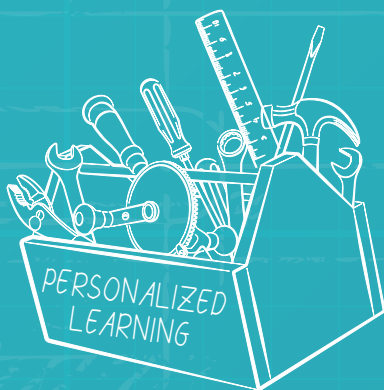


BENEFITS

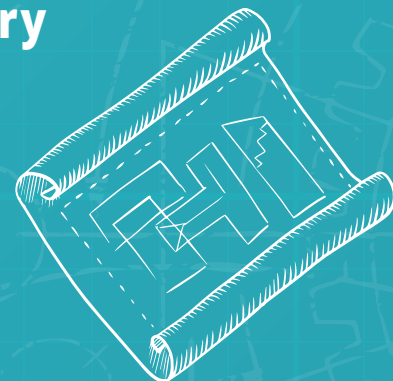
- Personalized to Each Student
- Delivers Timely Growth Measures
- Empowers Students to Set & Exceed Goals
- Helps Teachers Identify Areas for Growth

TESTING WINDOWS

- FALL: August - October
- WINTER: December - January
- SPRING: April - May



**More Information
<http://kisd.us/MAP>**



IN KLEIN ISD, **EVERY** STUDENT ENTERS WITH A PROMISE & EXITS WITH A PURPOSE