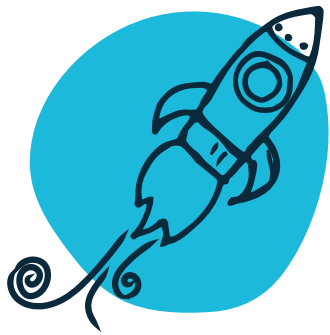


**CHAMPIONS.**

**EXPLORE.  
PLAY.  
LEARN.**



**SPACE IS LIMITED—  
ENROLL TODAY!**

**Give your child a creative space to discover what they love, be original, and build friendships!**

Inside your child lives a scientist, an artist, a teacher, a physician, a CEO. That's why we designed our curriculum to bring out the best in your children and help them develop stronger problem-solving, teamwork, leadership, and life skills. Our teachers inspire children to follow their curiosity across a breadth of subjects- creative arts, math and construction, library time, puzzles and games, and science—to foster mental, physical, social, and emotional growth.

Champions also offers programs during spring, summer, and winter break. No matter the time of year, Champions is there for your family.

**Visit our website [www.DiscoverChampions.com](http://www.DiscoverChampions.com) to enroll your child and secure a spot for the 2023/2024 school year.**

**Space is limited and varies by school.**

**Call or email us for more information!**

**Adler** | Site Director Ms. Star | 847-345-5241 | [CH00387@discoverchampions.com](mailto:CH00387@discoverchampions.com)

**Copeland** | Site Director Ms. Vanessa | 847-387-0202 | [CH003839@discoverchampions.com](mailto:CH003839@discoverchampions.com)

**Butterfield** | Site Director Ms. Jocelyn | 847-345-2392 | [CH003838@discoverchampions.com](mailto:CH003838@discoverchampions.com)

**Rockland** | Site Director Mr. Sergio | 224-532-0078 | [CH003840@discoverchampions.com](mailto:CH003840@discoverchampions.com)

**Area Manager Nicole Brady** | 630-383-6611 | [nbrady@discoverchampions.com](mailto:nbrady@discoverchampions.com)



## 2023/2024 Liberyville District 70 Champions

Champions provides care for families at:  
Adler, Butterfield, Copeland, and Rockland Elementary Schools

**Weekly Tuition Rates (per child):**  
*Registration Fee: \$75.00 per child/\$110 per family*

Program	Part-Time (1-2 Days/Week)	3 Days Per Week	Full-Time (4-5 Days/Week)
Before-School Program	\$35.00	\$50.00	\$65.00
After-School Program	\$65.00	\$95.00	\$130.00

Non-school Full Day Winter & Spring Break \$50/day



**Scan here to enroll today!**



*Have more questions?*

**Champions Family Support**

800-246-2154

ChampionsHelp@KC-education.com

Live chat available at [www.DiscoverChampions.com](http://www.DiscoverChampions.com)