

PEASTER ISD

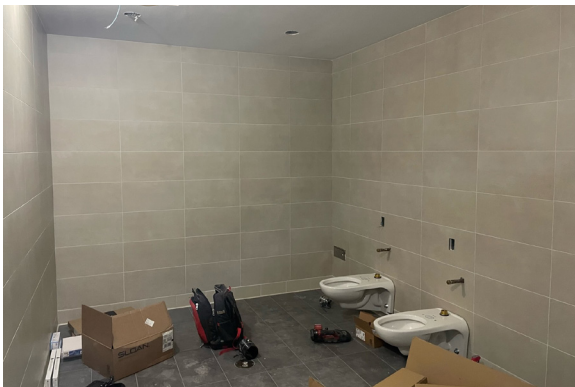
INTERMEDIATE SCHOOL

CONSTRUCTION UPDATE

- EXTERIOR WALL R-PANEL INSTALLATION IS IN PROGRESS.
- WINDOW INSTALLATIONS ARE IN PROGRESS.
- EXTERIOR HOLLOW METAL DOOR INSTALLATION IS IN PROGRESS.
- CEILING GRID INSTALLATION IS IN PROGRESS.
- GANG RESTROOM TILE AND FIXTURE INSTALLATIONS ARE IN PROGRESS.
- MECHANICAL, ELECTRICAL, PLUMBING, AND LOW-VOLTAGE TRADES ARE IN PROGRESS.
- HVAC UNIT INSTALLATION IS IN PROGRESS.

COST SUMMARY

Total Budget:	\$24,228,401
Total Completed & Stored To Date:	\$15,491,622
Percentage Complete:	64%



DIFFERENT FROM THE GROUND UP

