

**AP Literature and Composition**  
**Literature Review Assignment**

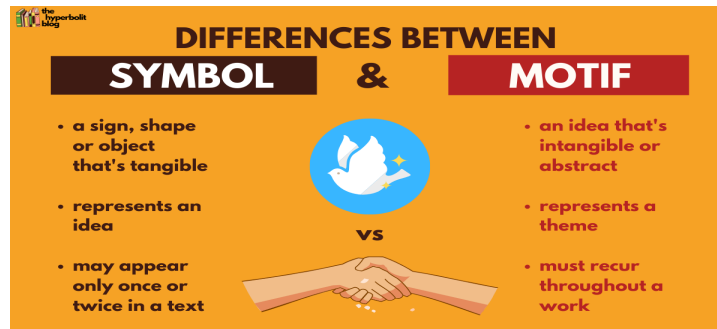
**Part I – Genre (Gothic Literature)**

**Gothic** (goth-IK): a literary style popular during the end of the 18th century and the beginning of the 19th. This style usually portrayed fantastic tales dealing with horror, despair, the grotesque and other “dark” subjects. Gothic literature was named for the apparent influence of the dark gothic architecture of the period on the genre. Also, many of these Gothic tales took place in such “gothic” surroundings. Other times, this story of darkness may occur in a more everyday setting, such as the quaint house where the man goes mad from the "beating" of his guilt in Edgar Allan Poe's “The Tell-Tale Heart.” **In essence, these stories were romances, largely due to their love of the imaginary over the logical**, and were told from many different points of view. This literature gave birth to many other forms, such as suspense, ghost stories, horror, mystery, and also Poe's detective stories. This movement began to slowly open many people's eyes to the possible uses of the supernatural in literature.

For a more detailed idea of the genre visit: [Characteristics of Gothic Literature](#)

Gothic Element	Example in <i>Frankenstein</i>

**Part II - Symbols and Motifs**



**Symbolism Examples**

- White - purity
- Snakes - evil, corruption, or temptation
- Windows - opportunity or freedom (unless the window is closed, then it can symbolize entrapment)
- Rain (or water in general...particularly if something is rising from it) – rebirth or turning point

**Identify five symbols throughout the entirety of the novel (you must have symbols from all three sections of the book) and complete the chart below**

Symbol	Quote with page #	Explanation of its significance to the novel as a whole


**Additional Symbols (you do not have to provide quotes or explanations for these**

- 
- 
- 
- 

**Motif Examples – notice how these are all abstract concepts**

- Betrayal
- Greed
- Prejudice
- Repentance

**Identify five motifs that you see developed throughout the novel, provide at least two quotes which support each motif and explain why each one is significant.**

Motif	Quote with pg#	Explanation of significance	Quote with pg#	Explanation of significance

**Additional Motifs (you do not have to provide quotes or explanations for these**

- 
- 
- 
- 

**Part III - Identifying theme**

A theme statement is an overarching message of a piece of literary work. It does not mention the piece of work, author or characters, but it conveys the true essence of the work. Themes typically cover abstract universal ideas and concepts like love, identity and trust (these are motifs).

Example: Within evil people lies a hatred that inevitably leads to destruction.

**Use three of the motifs you selected to create theme statements for the novel *Frankenstein*:**

Theme statement #1

Theme statement #2

Theme statement #3

Choose two of the above theme statements and provide two quotes from each section of the novel that support the theme.

Theme	Quotes with pg #'s from "Volume One"	Quotes with pg #'s from "Volume Two"	Quotes with pg #'s from "Volume Three"
	1)  2)	1)  2)	1)  2)
	1)  2)	1)  2)	1)  2)

**Part IV – Characterization:** Dynamic characters are the opposite of static characters; while dynamic characters change throughout a story, static characters stay the same. ... A dynamic character is one who changes significantly throughout the story, whereas a round character is simply one who is interesting and layered.

A static character is one who does not undergo any significant change in a story, whereas a flat character is a one-dimensional character who isn't layered or deep—rather, a flat character just has one or two traits that make up their whole personality.

Provide examples of one character in each category and explain your reasoning for their placement

Dynamic	Round	Static	Flat
•	•	•	•
•	•	•	•

**Character Analysis** – Dynamic characters experience both internal and external conflict that cause them to change and develop throughout the course of the story. Choose two dynamic characters from *Frankenstein* to complete the chart below

Dynamic Character #1 \_\_\_\_\_

<b>External Conflicts</b>	<b>Internal Conflicts</b>
Conflict with DESTINY (purpose, expectations, self-actualization, etc.)	Conflict with SELF (values, motivations, desires, etc.)
Conflict with ENVIRONMENT (setting, forces of nature, society, etc.)	Ironies/Contradictions
Conflict with OTHERS (doppelgangers, foils, rivals, allies, etc.)	Changes

Dynamic Character #2 \_\_\_\_\_

<b>External Conflicts</b>	<b>Internal Conflicts</b>
Conflict with DESTINY (purpose, expectations, self-actualization, etc.)	Conflict with SELF (values, motivations, desires, etc.)
Conflict with ENVIRONMENT (setting, forces of nature, society, etc.)	Ironies/Contradictions
Conflict with OTHERS (doppelgangers, foils, rivals, allies, etc.)	Changes

## Part V – Narrative Style

Frankenstein is a multi-strand narrative with three different first-person narrators. Shelley uses a **framing device** (the reason for the telling of the main narrative) and **epistolary narration** (when a story is told through letters). The complex narrative structure of *Frankenstein* involves framed or embedded narratives (known as a story within a story)— what has been called a Russian doll structure of stories within stories, that looks something like this: [Robert Walton [Victor Frankenstein [Monster] Victor Frankenstein] Robert Walton] Walton’s narrative provides the framing device, the monster has the embedded narrative, and the protagonist Victor is the main narrator. The first-person narratives can be seen to be limited or unreliable, as can the Chinese whispers effect, which may make the reader feel more unsettled, but also distances them from the horrific events of the plot.

Frankenstein has a complex narrative structure. There are three "frames"—

- The story of Walton and his expedition to the Arctic
- The story of Frankenstein himself
- The story the monster tells Frankenstein of his life after his creation

What effect does this narrative style have on the development of the story? Brainstorm some ideas below:

- 
- 
- 
- 
- 
- 
- 

**Part VI - Personal response (this should be approximately 250-300 words...or ½ page of single spaced 12-point Times New Roman Font...or 1 page of double spaced 12-point Times New Roman Font)**

Did you like the story...why or why not? You do not have to provide quotes as evidence, but you should include specific details about characters and plot.

