



March 23, 2023

Dear Third, Fourth and Fifth Grade Parents/Guardians:

The 2023 Pennsylvania System of School Assessments (PSSA) for students in Grades 3, 4, and 5 will occur in April and May. Information obtained from the assessment is often valuable for refining curriculum, designing professional development and informing the community about student achievement.

Below you will find the Central Elementary PSSA Testing Schedule. Testing will begin approximately at 8:45 a.m. each day. Tests are considered untimed but will take approximately 40-80 minutes depending on the grade and test. Please avoid scheduling any doctor appointments, vacations, etc. during these testing dates. If it is absolutely necessary to schedule an appointment, please make them for the afternoon.

Grades 3, 4 and 5: English Language Arts (ELA) Testing Schedule

April 24 Monday	April 25 Tuesday	April 26 Wednesday
ELA	ELA	ELA

Grade 3, 4, and 5: Math Testing Schedule

May 1 Monday	May 2 Tuesday
Math	Math

Grade 4: Science Testing Schedule

May 4 Thursday	May 5 Friday
Science	Science

The assessments will challenge all students with tasks requiring them to inference, problem-solve, and identifying concepts. Students will write their own responses to items as well as choose from multiple-choice responses.

Parents can help their children prepare for the assessment by encouraging them to get plenty of sleep each night and to eat a good breakfast each morning. Also, parents can reassure children that the assessment gives them an opportunity to show what they have learned in order to help teachers plan the best possible instruction for them.

An informational flyer is attached to help you better understand and answer questions regarding the assessments.

Sincerely,

Amy L. Kern, Ed.D.
Principal

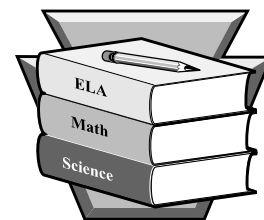
Dear Parent/Guardian:

In an era of cell phones, smartphones and other electronic devices which can easily photograph and instantly share photographs, confidential and secure test materials can be easily compromised. Not only is it expensive to replace a compromised test item, the material contained in the PSSA and Keystone Exams is copyrighted property of the Commonwealth of Pennsylvania. Copying or duplicating the material from the assessment, including the taking of a photograph of secure assessment material, is a violation of the federal Copyright Act. Penalties for violations of the Copyright Act may include the cost of replacing the compromised test item(s) or fines of no less than \$750 up to \$30,000 for a single violation (17 U.S.C. § 101 et seq.).

In order to ensure reliable test results and to avoid the cost of replacing test items, the Department of Education requires schools to set rules and take certain steps to protect test materials. Electronic devices such as but not limited to cell phones, smartphones, smartwatches, E-readers, Nooks, Kindles, iPods, tablets, camera-ready devices, and any other electronic device which can be used to photograph or duplicate test materials, access the internet and/or communicate with others during the administration of the PSSA or Keystone Exams are not permitted in any testing site. Please speak with your child and let your child know that the possession and/or use of a cell phone or other electronic device during the administration of the PSSA or Keystone Exams will result in consequences.

You will be contacted by the school if your child is discovered using and/or having a cell phone or other unapproved electronic device during the administration of the PSSA or Keystone Exams. Students who ignore this directive will be subject to the school's discipline policy and the Department of Education's requirement that the student's test will not be scored and the student will be required to retake the entire exam. The electronic device will be held by school staff, and the device's stored photographs and other functions will be examined with your permission. You may request to be present when the electronic device is examined. If a photograph of the PSSA or Keystone Exam is discovered or if permission to search other functions of the electronic device is refused, the device will be held by the school staff. The Pennsylvania Department of Education holds the copyright to all material contained within the PSSA and Keystone Exams, the Pennsylvania Department of Education will be contacted and further action may be taken.

If, after testing is complete and test materials have been returned, it is discovered that a student used and/or had a cell phone or other unapproved electronic device during the administration of the test, the school's discipline policy will be followed and the student's test will not be scored.



GENERAL INFORMATION ABOUT THE PSSA

Which schools participate?

All school districts and charter schools participate in the assessments. Nonpublic and private schools may also participate on a voluntary basis.

Which students take the assessments?

Except for a very few students who meet specific criteria for participation in an alternate assessment, all students are included in the assessments as outlined below:

ELA & Mathematics—Grades 3, 4, 5, 6, 7, and 8
Science—Grades 4 and 8

Who decided what the assessments should measure?

Groups of educators from all levels of education in Pennsylvania chose the areas of knowledge and skills upon which the assessments are based. The groups included teachers, supervisors, curriculum directors, and college specialists. They also reviewed, edited, and approved the test items.

Who administers the assessments?

Each school chooses the person(s) who will administer the assessments. In most cases, these are teachers in the students' building.

How are the results reported?

Two copies of the individual student report for all assessments will be sent to all schools and districts that participate for distribution to parents, teachers, school counselors, and/or principals. The state will not receive any report with individual names included.

School-level reports will be used for curricular and planning purposes. School districts and charter schools may publish the results of PSSA testing for each school. The state will also release school-by-school assessment data.

May parents see the assessments?

Yes, under one circumstance. School entities are required to have policies to ensure that parents or guardians have the right to review a state assessment in the school entity during convenient hours for parents or guardians from the time testing materials are received to the end of the make-up schedule in order to determine whether a state assessment conflicts with their religious belief. This is the only reason allowable under regulation.

Confidentiality agreements must be signed, and no copies of the assessments or notes about assessment items will be permitted to leave the school. If after reviewing the test, parents or guardians find the test to be in conflict with their religious belief and wish their student(s) to be excused from the test, the right of the parents or guardians will not be denied upon written request to the applicable school district Superintendent, charter school Chief Executive Officer, or AVTS Director. Parents or guardians should contact their child's school to make arrangements to review the test.

Report Testing Irregularities

Parents/guardians who believe that a testing irregularity may have occurred may email ra-edirregularities@pa.gov or call 844-418-1651 to report the incident.

INFORMATION ABOUT THE ENGLISH LANGUAGE ARTS ASSESSMENT (grades 3 through 8)

How long does the assessment take?

The entire English Language Arts assessment takes approximately three to four hours to complete. Your school district will inform you about the assessment schedule.

What does the assessment include?

Each student completes three sections of questions for the English Language Arts assessment. Some portions will be the same for all students, and some will consist of different groups of questions.

What types of questions are on the assessment?

Students respond to multiple-choice, evidence-based selected-response, and constructed-response questions. In a multiple-choice question, the correct answer(s) is chosen from four options. Evidence-based selected-response questions have two parts, and students select one or more answers for each part. Constructed-response questions may include a short-answer (grade 3) or text dependent analysis (grades 4 through 8). Short-answer questions require students to compose a brief response to support their answer. For the text dependent analysis question, students analyze a text and use evidence from the reading passage to compose an essay.

How are written responses to constructed-response items scored?

The written responses for English Language Arts are scored by evaluators trained in applying an ELA-specific scoring guideline. For short-answer questions, scores are based on content only. Spelling and punctuation are not included as part of the scoring process. Responses to text dependent analysis questions are scored based on both content and writing skills.

What is assessed in English Language Arts?

The English Language Arts assessment addresses six major reporting categories as well as two text types. Students respond to standalone multiple-choice items assessing language. Additionally, students read a number of passages from literature and informational genres and respond to questions about these passages that indicate both comprehension and reading skills and the students' analysis and interpretation of different types of texts.

INFORMATION ABOUT THE MATHEMATICS ASSESSMENT (grades 3 through 8)

How long does the assessment take?

The entire mathematics assessment takes approximately two to three hours to complete. Your school district will inform you about the assessment schedule.

What does the assessment include?

Each student completes two sections of questions for the mathematics assessment. Some portions will be the same for all students, and some will consist of different groups of questions.

What types of questions are on the assessment?

Students respond to two types of questions: multiple-choice and open-ended. In a multiple-choice question, the correct answer is chosen from the four presented options, while open-ended questions require students to compose their responses. Open-ended questions generally require students to provide detail in support of their answers (such as showing or describing the steps performed to complete a calculation).

How are written responses to open-ended items scored?

The written responses for mathematics open-ended items are scored by evaluators trained in applying a mathematics-specific scoring guideline. In mathematics, scores are based on content only. Spelling and punctuation are not included as part of the scoring process.

What is assessed in Mathematics?

The mathematics assessment addresses five major reporting categories across four clusters. The reporting categories assessed and the proportion of questions in each reporting category vary by grade level. As a part of the assessment of Cluster A, Numbers and Operations, students in grades 4 through 8 respond to a set of questions without a calculator. Constructed-response items may require the students to show all of their work (e.g., calculations, graphs, drawings) and/or to explain in writing how they solved the problems.

INFORMATION ABOUT THE SCIENCE ASSESSMENT (grades 4 and 8)

How long does the assessment take?

The entire science assessment takes approximately one to two hours to complete. Your school district will inform you about the assessment schedule.

What does the assessment include?

Students in grades 4 and 8 complete two sections of questions for the science assessment. Some portions will be the same for all students, and some will consist of different groups of questions.

What types of questions are on the assessment?

Students respond to two types of questions: multiple-choice and open-ended. In a multiple-choice question, the correct answer is chosen from the four presented options, while open-ended questions require students to compose their responses. At grade 8, the science assessment also includes science scenarios.

What is a science scenario?

A science scenario contains text, graphics, charts, and/or tables and uses these elements to describe the results of a class project, an experiment, or other similar research. Students use the information found in a science scenario to answer multiple-choice questions.

How are written responses to open-ended items scored?

The written responses for science open-ended items are scored by evaluators trained in applying a science-specific scoring guideline. In science, scores are based on content only. Spelling and punctuation are not included as part of the scoring process.

What is assessed in science?

The science assessment addresses the four major reporting categories: The Nature of Science, Biological Sciences, Physical Sciences, and Earth and Space Sciences. The proportion of items in each reporting category varies by grade level.

Hampton Township School District
Central Elementary School



Amy L. Kern, Ed.D.
Principal

April 20, 2023

Dear Parents,

As we approach the end of the school year, the issue of parental requests for specific classroom teachers arises. Assigning students is a complex educational process that involves grade-level, special area and support teachers, counselors, reading and math specialists, and the building principal. We have developed procedures that allow us to create a healthy, heterogeneous balance. These classrooms are formed with consideration given to a wide range of academic strengths, learning styles, and personal characteristics of both the teachers and the students.

Any concerns, unique characteristics, or circumstances that may prove significant in the placement of your child should be shared with the current homeroom teacher. This information will be included as part of the placement process. However, please know that specific teacher requests will not be granted.

The priority of our school community is to see that each student receives the best possible education. Our teaching staff is an excellent one that can meet the needs of all students. Your continued support in this endeavor is greatly appreciated.

Sincerely,

A handwritten signature in dark ink that reads "Amy L. Kern". The signature is fluid and cursive, with the first letters of the first and last names being capitalized and prominent.

Amy L. Kern, Ed.D.
Principal

Spring cleaning??

Don't throw it away!!

Talbot Town would love your donations!

We welcome any of the following items:

- Used books in good condition
 - Dollar store type items
 - Art Supplies

Donations accepted until June 1st. Please label the bag, "Talbot Town."

Thank you,
The First and Second Grade Teachers.





Camp Invention®

MAKE NEW DISCOVERIES THIS SUMMER



Learn More:

<https://www.ht-sd.org/community/htsd-summer-program>

YOUR LOCAL CAMP INFO:

Where: Wyland Elementary School
2284 Wyland Avenue
Allison Park, PA 15101

When: June 26 – 20, 8:30 – 3:00

Cost: \$280.00

Camp Invention is not a school-sponsored program or school-affiliated activity. Camp Invention is exempt from licensing requirements governing recreational camps for children pursuant to Massachusetts Department of Public Health regulations. Camp Invention operates an educational summer program and not a recreational camp; therefore, it is not required to be licensed by local Boards of Health/Health Departments in the cities or towns where these programs are located.

©2022 National Inventors Hall of Fame, Inc.



Inspiring Future Innovators®

In partnership with



Investors in Creativity and Invention
Army Educational Outreach Program
Burton D. Morgan Foundation
General Motors
Nordson Corporation Foundation

Overdeck Family Foundation
United Way of Summit & Medina
U.S. Department of Defense (DoD) STEM, Defense
STEM Education Consortium (DSEC)
Walton Family Foundation

FIELD DAY Shirt Sale

PTO Sponsored: Shirt purchase optional (\$12)



CENTRAL ELEMENTARY SCHOOL

ORDER DEADLINE: Friday, April 21, 2023

In order to distribute shirts on time, this deadline will NOT be extended.

Shirt Colors: What color should I order?

Mr. Holler will assign Third, Fourth and Fifth grade students to either the blue or gold team. Please ask your child which team they are on prior to placing your order. If you have multiple children, they may each be assigned to a different color team.

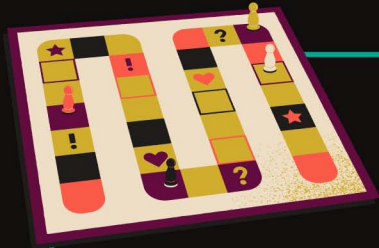
Students in Kindergarten, First and Second grade should order grey.

Questions: Contact Nicole Mishko nmishko@yahoo.com

waterfrontembroidery.com/product-category/central-elementary-field-day-2023/



scan to order



We Love You to Pieces!

Central PTO Teacher Appreciation
May 5 - 11

May 5 - Candy Land

Join us for a cake walk along with some yummy popcorn!

May 8 - Sorry!

We're sorry it's Monday, but enjoy a yogurt bar breakfast and coffee!



May 9 - Guess Who?

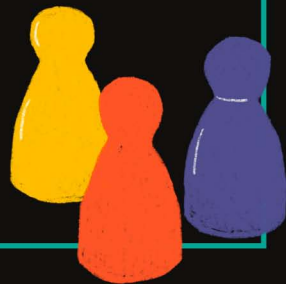
Who do we appreciate? You! Come "shop" for snacks, desk supplies and treats!

May 10- Hungry, Hungry Teachers!

Leave your lunch at home and enjoy a meal on us!

May 11 - Bingo!

Feeling lucky? Come play Bingo and win some prizes! We'll have leftovers and other snacks available, too!





You are invited!

Come have fun with your Central Elementary friends at our PTO sponsored

Date: Friday, May 19, 2023

Time: 5:30-8:00 PM

Place: Central Elementary

Block Party

Cost to attend is \$5 per person. Admission includes:

-Food: pizza, hot dogs, drinks and various snacks

-DJ, games, face painting and more

*Sweet Pea's Sweet Treats will be on location with ice cream treats (additional purchase)

Return bottom portion and payment to the school office by Friday, May 12th

All children must be accompanied by at least one adult per family. Please do not bring pets.

GAMES

MUSIC

**FACE
PAINTING**

TREATS

FUN

We look forward to attending Central Elementary's block party!

Family Name: _____

Total number of children: _____

Total number of adults: _____

Total number of people attending event: _____ x \$5 each = Total Amount Enclosed \$ _____

Cash or Check (Payable to Central PTO) Return to the office by Fri. May 12th in an envelope marked 'Block Party'

Any questions, please contact Nicole Mishko: nmishko@yahoo.com or Jen Berke: jenberke@gmail.com

Volunteers are needed: <https://www.signupgenius.com/go/20F0D4AAFAE28A5FB6-block>



ARE YOU AN ARTIST?

If so, then please enter the

STUDENT DESIGN CONTEST FOR THE 31st Annual HAEE 5K

We're looking to put YOUR DESIGN on a **Banners, Signs and T-SHIRTS**

Create designs for one or all of these items!

Students may submit up to 3 different designs in total.

Design Criteria:

- Unique and original design
- Up to two colors (but should look good in black-and white too!)
- 8" x 8" maximum size
- Appropriate to HAEE and the 5K
- Should include the words:
 - ✓ "HAEE" or "Hampton Alliance for Educational Excellence"
 - ✓ 31st Race
 - ✓ Date of the Race: October 7, 2023

Email Submissions to:

alfie.midgley@hamptonalliance.org

Deadline: May 15, 2023



Winning design to be prominently displayed throughout the HAEE 2023 Race Campaign and awarded a \$100 Amazon Gift Card!!

all levels
of play
welcome

CHECK MATE!

CHESS CLUB



Wednesdays,
April 19th & May 17th
6:00-8:00 pm

Hampton Library & Community Center,
Activity Room 1

Casual, instructive opportunity for children in kindergarten through 12th grade led by 2023 PA State 6th Grade Chess Champion, Benjamin Lin. The emphasis will be on good sportsmanship & building skill level through instruction & play.

"Sometimes you will win, sometimes you will loose,
but you will always learn."

**NOW
REGISTERING**



| PITTSBURGH

BEFORE AND AFTER SCHOOL ENRICHMENT

FALL 2023

HAMPTON TOWNSHIP SCHOOL DISTRICT

(Serving Central, Poff, Wyland Elementary Schools)

Central Elementary

4100 Middle Rd. Allison Park, PA 15101

EMPOWERING STUDENTS

The Y makes the most of your child's after school time by offering active learning opportunities designed to engage and expand young minds. Housed in local schools, YMCA After School Care gives your child the opportunity to participate in active play and collaborate on fun projects.



AVAILABILITY

Before School

Mon-Fri 7:00 AM – 8:45 AM

After School

Mon-Fri 3:30 PM – 6:00 PM

Kindergarten Wrap AM

Mon-Fri 8:45 AM – 12:45 PM

Kindergarten Wrap PM

Mon-Fri 11:25 AM – 3:30 PM



ENERGIIZE



ENRICHMENT



EXPLORATION

REGISTRATION INFORMATION

All rates shown are weekly

Program Offerings	1-3 Days Weekly		4-5 Days Weekly	
	Facility Member	Community Member	Facility Member	Community Member
Before School Care	\$ 33	\$ 39	\$ 43	\$ 50
After School Care	\$ 68	\$ 80	\$ 87	\$ 103
Kindergarten Wrap	\$ NA	\$ NA	\$ 111	\$ 131

ABC

A minimum number of registrants is required for the program to operate.

FACILITY MEMBER RATE

Varies by location

COMMUNITY MEMBER RATE

Community Member - \$0/year

Registration Fee - \$30 on or before 7/31 (\$50 from 8/1 and on)

Youth Development Business Office

7140 Bennett St. Pittsburgh, PA 15208 | 412 573 4166

YMCA of GREATER PITTSBURGH | Register for Fall 2023 at pittsburghymca.org/base



2023 HAMPTON GIRLS' **BASKETBALL CAMP** (Keep For Your Records)

TO ALL GIRLS ENTERING GRADES 1st through 8th:

The Hampton Varsity Girls' Basketball coaches and players would like to invite any girl interested in improving her basketball skills to our 8th Annual Girls' Summer Basketball Camp. This year's camp is scheduled at **HAMPTON HIGH SCHOOL** for the week of **August 7th through 10th**. Camp sessions will introduce and reinforce the girls to the fundamentals of basketball, allow them to develop their basketball skills, and give them the opportunity to interact with the Lady Talbot varsity players.

Any communications will be sent via Remind, a texting group that hides both your and my cell number. Please take a minute to download the App and join the group.

1. Send a text to: 81010
2. With this message: @hgbbcamp

WHEN: Monday, August 7 through Thursday, August 10

TIME: 9:00 a.m. to Noon

WHERE: Hampton High School

COST: \$125** per player

**Siblings: \$100 per camper (2 sisters = \$200, ect.)

REGISTER BY PAPER or ELECTRONICALLY:

	<u>Paper & Pen</u>	<u>Electronic</u>
Registration Form	Mail hard copy to: Tony Howard 10167 Woodbury Drive Wexford, PA 15090	Fill out registration form via Google form at: https://forms.gle/torovUNqVkPv8Wkp7
Payment	Check made payable to: Tony Howard	Send payment through Venmo: @Anthony-Howard-1973

🏆 All Campers will receive Tee-Shirt and Basketball

QUESTIONS: Please e-mail hamptongirlshoops@gmail.com

2010 年 4 月 17 日 星期六

Camper's Name _____

Grade 2023-24 _____ School _____

Address _____

Home Number _____ Cell Number _____

Email _____

Emergency Contact Name/Number _____

Name of Physician _____ Phone Number _____

Insurance Carrier _____ Policy Number: _____

SHIRT SIZE (please circle) **Youth:** S M L
 Adult: S M L

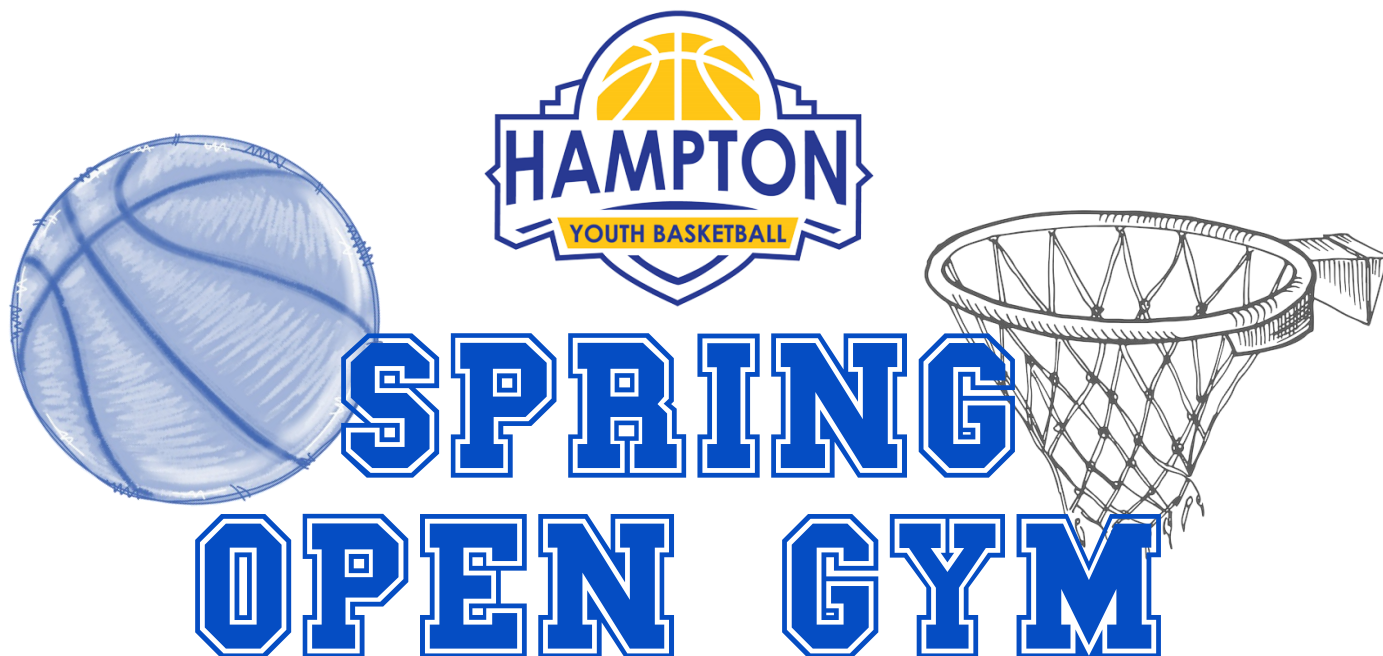
2010 年 4 月 17 日 星期六

Parents: Please read and Sign:

I hereby approve of my daughter(s)' attendance and participation in the Hampton Girls' Basketball Camp. I certify that she is in good health and able to participate in all activities. If you are unable to reach me, I authorize the directors to act on my behalf according to their best judgement in any emergency requiring medical attention for which service I will pay. I hereby waive and forever release Hampton School District, its officers, and the clinic staff from all liability for any injuries or illnesses incurred while at the clinic. Please attach a note explaining any physical limitations, medical conditions, and or required medication.

Signature _____

Medical Conditions:



Come to one or come to all! The Hampton Basketball Association is offering a spring open gym to all those who are interested. See you on the court!

2nd - 3rd GIRLS & 3rd - 4th BOYS	5th - BOYS	4th - 5th GIRLS
April 4th - HMS 6-7:30PM	April 3rd - Central 8-9PM	April 4th - HMS 7:30-9PM
April 11th - HMS 6-7:30PM	April 17th - Central 8-9PM	April 11th - HMS 7:30-9PM
April 18th - HMS 6-7:30PM	April 24th - Central 8-9PM	April 18th - HMS 7:30-9PM
April 25th - HMS 6-7:30PM	May 1st - Central 8-9PM	April 25th - HMS 7:30-9PM
May 2nd - HMS 6-7:30PM	May 8th - Central 8-9PM	May 2nd - HMS 7:30-9PM
May 9th - HMS 6-7:30PM	May 15th - Central 8-9PM	May 9th - HMS 7:30-9PM
May 16th - HMS 6-7:30PM	May 22nd - Central 8-9PM	May 16th - HMS 7:30-9PM
May 23rd - HMS 6-7:30PM	Questions? Please email hamptonareahoops@gmail.com	May 23rd - HMS 7:30-9PM
May 30th - HMS 6-7:30PM		May 30th - HMS 7:30-9PM