



# NJSLA Results

## Spring 2019 Administrations

**MARGATE CITY SCHOOL DISTRICT**

*October 16, 2019*

# Individual Score Reports

Side 1

[NJSLA for ELA and  
Mathematics  
Score Interpretation Guide](#)

## Mathematics Assessment Report, 2018–2019

This report shows whether FIRSTNAME met grade-level expectations and is on track for the next grade level or course. **This assessment is just one measure of how well your child is performing academically.**

Visit the NJ Parent Portal at [nj-results.pearsonaccessnext.com](http://nj-results.pearsonaccessnext.com) and use the following code to access your child's performance results online.

**VgsdyXWBYXD5**

*See side 2 of this report for specific information on your child's performance in mathematics.*

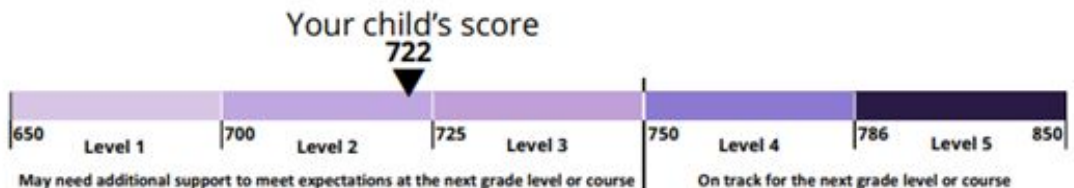
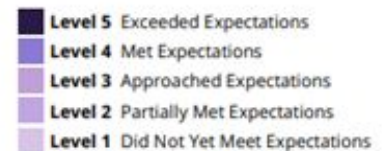
### How Did FIRSTNAME Perform Overall?

**Performance Level 2**

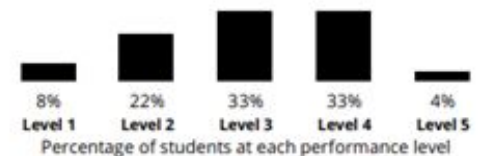
### How Can You Use This Report?

Ask your child's teachers:

- What do you see as my child's academic strengths and areas for improvement?
- How will you use these test results to help my child make progress this school year?



### How Students in New Jersey Performed



### Student Growth Percentile

Your child's score this year is the same as or better than 43 percent of New Jersey students who had a similar score to your child on the assessment in a previous year(s).

# Subclaim Areas

## How Did Your Child Perform in Areas of Mathematics?



### MAJOR CONTENT

Your child performed about the same as students who **did not yet meet or partially met expectations**. Students meet expectations by solving problems involving proportional relationships, adding, subtracting, multiplying and dividing with rational numbers, and linear expressions, equations, and inequalities.



### EXPRESSING MATHEMATICAL REASONING

Your child performed about the same as students who **approached expectations**. Students meet expectations by creating and justifying logical mathematical solutions and analyzing and correcting the reasoning of others.



### ADDITIONAL & SUPPORTING CONTENT

Your child performed about the same as students who **met or exceeded expectations**. Students meet expectations by solving problems involving circumference, area, surface area, volume, statistics, and probability.



### MODELING & APPLICATION

Your child performed about the same as students who **did not yet meet or partially met expectations**. Students meet expectations by solving real-world problems, representing and solving problems with symbols, reasoning quantitatively, and strategically using appropriate tools.

#### LEGEND

Your child performed about the same as students who:



Met or Exceeded Expectations



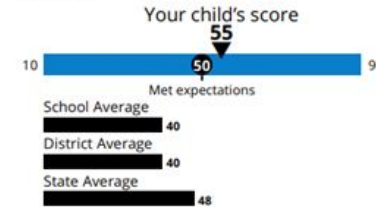
Approached Expectations



Did Not Yet Meet or Partially Met Expectations

## How Did Your Child Perform in Reading and Writing?

### READING



### LITERARY TEXT

Your child performed about the same as students who **met or exceeded expectations**. Students meet expectations by showing they can read and analyze fiction, drama, and poetry.



### INFORMATIONAL TEXT

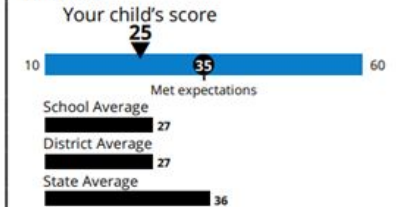
Your child performed about the same as students who **did not yet meet or partially met expectations**. Students meet expectations by showing they can read and analyze nonfiction, history, science, and the arts.



### VOCABULARY

Your child performed about the same as students who **met or exceeded expectations**. Students meet expectations by showing they can use context to determine what words and phrases mean.

### WRITING



### WRITTEN EXPRESSION

Your child performed about the same as students who **approached expectations**. Students meet expectations by showing they can compose well-developed writing, using details from what they have read.



### KNOWLEDGE OF LANGUAGE AND CONVENTIONS

Your child performed about the same as students who **approached expectations**. Students meet expectations by showing they can compose writing using rules of standard English.

#### LEGEND

Your child performed about the same as students who:



Met or Exceeded Expectations



Approached Expectations



Did Not Yet Meet or Partially Met Expectations

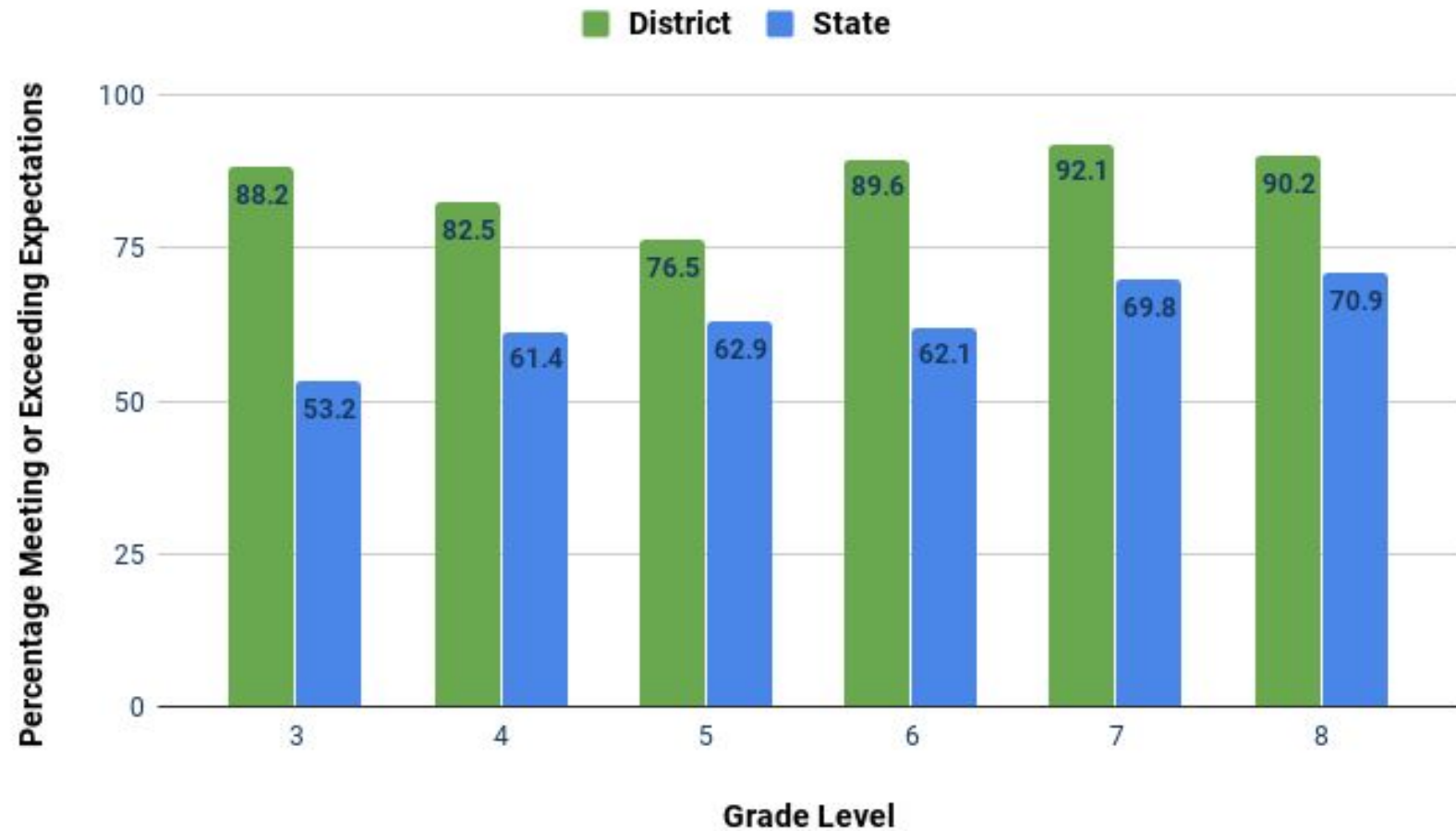


# English Language Arts

## English Language Arts NJSLA 2019

### District vs.State Comparison

## Performance Levels 4 & 5



Performance Levels 4 & 5 are an indication a student is on pace to be college and career ready.

# Comparison of Margate City School District to New Jersey Spring 2019 NJSLA

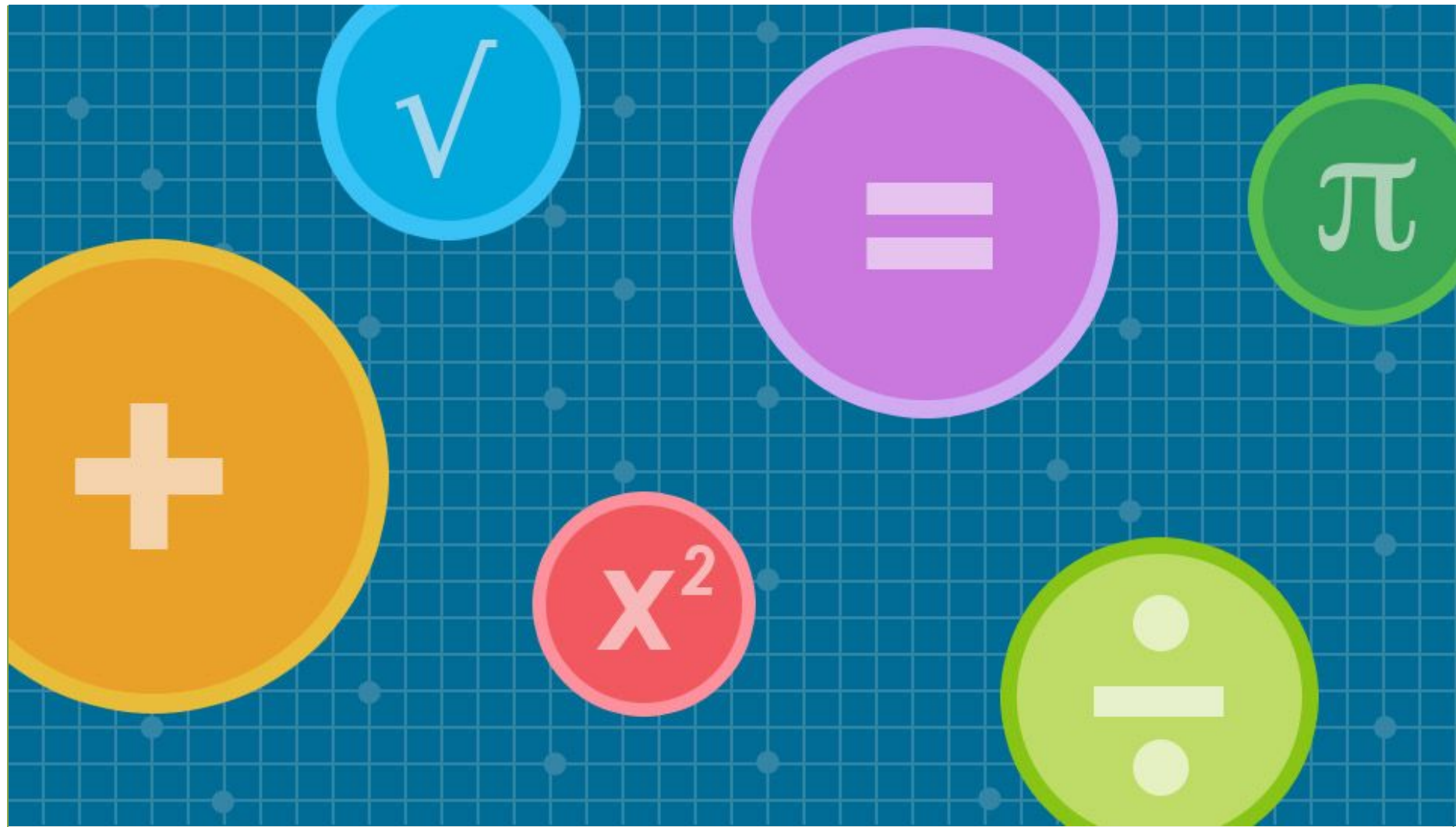
**ELA**



Grade	Level 1 Does Not Meet		Level 2 Partially Meets		Level 3 Approaching		Level 4 Meets		Level 5 Exceeds	
	District	State	District	State	District	State	District	State	District	State
<b>3</b>	<b>2.9</b>	14.0	<b>5.9</b>	14.4	<b>2.9</b>	21.4	<b>79.4</b>	42.8	<b>8.8</b>	7.4
<b>4</b>	<b>0</b>	8.6	<b>2.5</b>	12.6	<b>15</b>	21.4	<b>52.5</b>	39.1	<b>30.0</b>	18.3
<b>5</b>	<b>0</b>	7.4	<b>5.9</b>	12.5	<b>17.6</b>	22.2	<b>60.8</b>	45.6	<b>15.7</b>	12.3
<b>6</b>	<b>0</b>	7.3	<b>4.2</b>	12.6	<b>6.3</b>	23.9	<b>66.7</b>	40.9	<b>22.9</b>	15.2
<b>7</b>	<b>0</b>	8.9	<b>2.6</b>	10.5	<b>5.3</b>	17.8	<b>31.6</b>	33.1	<b>60.5</b>	29.7
<b>8</b>	<b>0</b>	9.2	<b>2.4</b>	10.3	<b>7.3</b>	17.7	<b>39.0</b>	38.0	<b>51.2</b>	24.9

Notes: Percentages may not total 100 due to rounding.



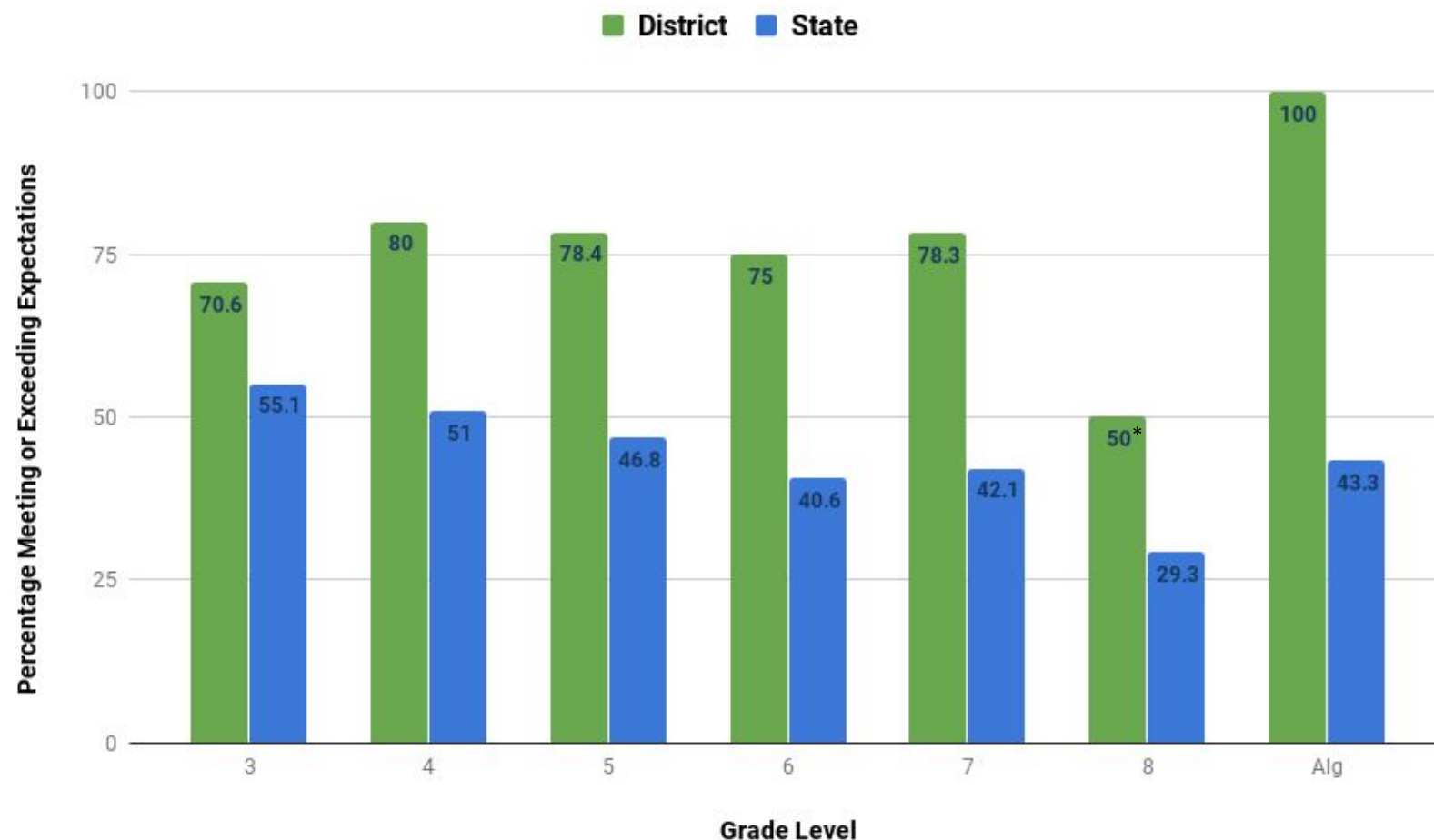


# Mathematics

# Mathematics NJSLA 2019

## District vs. State Comparison

## Performance Levels 4 & 5



*\*Math 8 outcomes are not representative of grade 8 performance as a whole. 77% of all grade 8 students performed at a level 4 or 5 on the math assessment taken in Spring 2019*



# Comparison of Margate City School District to New Jersey Spring 2019 NJSLA

## Math



Grade	Level 1 Does Not Meet		Level 2 Partially Meets		Level 3 Approaching		Level 4 Meets		Level 5 Exceeds	
	District	State	District	State	District	State	District	State	District	State
<b>3</b>	<b>2.9</b>	8.0	<b>8.8</b>	13.9	<b>17.6</b>	23.0	<b>50.0</b>	41.2	<b>20.6</b>	13.9
<b>4</b>	<b>0</b>	8.6	<b>2.5</b>	14.7	<b>17.5</b>	25.7	<b>60.0</b>	43.3	<b>20.0</b>	7.7
<b>5</b>	<b>2.0</b>	6.4	<b>9.8</b>	20.9	<b>9.8</b>	25.8	<b>54.9</b>	35.8	<b>23.5</b>	11.0
<b>6</b>	<b>2.1</b>	9.6	<b>4.2</b>	22.5	<b>18.8</b>	27.4	<b>60.4</b>	33.1	<b>14.6</b>	7.5
<b>7</b>	<b>0</b>	7.6	<b>10.8</b>	21.1	<b>10.8</b>	29.3	<b>48.6</b>	33.8	<b>29.7</b>	8.3
<b>8</b>	<b>5.0</b>	23.3	<b>15.0</b>	23.1	<b>30.0</b>	24.3	<b>50.0</b>	28.2	<b>0</b>	1.1
<b>Alg I*</b>	<b>0</b>	9.3	<b>0</b>	26.0	<b>0</b>	21.4	<b>72.7</b>	37.7	<b>27.3</b>	5.6

*\*Some students in grade 8 participated in the Algebra I assessment in place of the 8<sup>th</sup> grade Math assessment. Thus, Math 8 outcomes are not representative of grade 8 performance as a whole.*

Notes: Percentages may not total 100 due to rounding.

# Student Growth Trends



*Same Students, Consecutive Grades*



# Multi-Year Cohort Comparisons

## Performance Levels 4 and 5



*Same Students, Consecutive Grades*

Year of Graduation	MATHEMATICS % Levels 4 and 5			ENGLISH LANGUAGE ARTS % Levels 4 and 5		
	2017	2018	2019	2017	2018	2019
2024 Current 4th	NA	NA	<b>71</b> Math 3	NA	NA	<b>88</b> ELA 3
2023 Current 5th	NA	<b>85</b> Math 3	<b>80</b> Math 4	NA	<b>54</b> ELA 3	<b>83</b> ELA 4
2022 Current 6th	<b>74</b> Math 3	<b>69</b> Math 4	<b>78</b> Math 5	<b>77</b> ELA 3	<b>69</b> ELA 4	<b>77</b> ELA 5
2021 Current 7th	<b>74</b> Math 4	<b>85</b> Math 5	<b>75</b> Math 6	<b>81</b> ELA 4	<b>89</b> ELA 5	<b>90</b> ELA 6
2020 Current 8th	<b>78</b> Math 5	<b>75</b> Math 6	<b>78</b> Math 7	<b>78</b> ELA 5	<b>90</b> ELA 6	<b>92</b> ELA 7
2019 Current 9th	<b>68</b> Math 6	<b>75</b> Math 7	<b>77*</b> Math 8/Alg	<b>70</b> ELA 6	<b>95</b> ELA 7	<b>90</b> ELA 8

*\*This number indicates all of Grade 8*

Notes: Percentages may not total 100 due to rounding.

# Notable Achievements



- **Overall:** Margate students significantly outperform the state in all grades, subjects and performance levels.
- **English Language Arts:** Scores for Reading Informational Text and Writing Convention have risen significantly in all grades over the past four years.
- **Algebra:** 100% Meet or Exceed Expectations every year.
- **NJSLA Participation:** 99.6%



# Intervention Strategies



## English Language Arts

### Grades 3-4

- Utilizing **LinkIt Benchmarking** solutions to identify specific standards to be reinforced and monitor progress towards mastery.
- Using data to assign appropriate skill practice through **IXL** learning experiences.

### Grades 5-8

- Student-teacher writing conferences to provide valuable feedback developing student confidence in written expression.
- Focus on vocabulary in context to address selection-specific word development.

## Mathematics

### Grades 3-4

- Utilizing **LinkIt Benchmarking** solutions to identify specific standards to be reinforced and monitor progress towards mastery.
- Using data to assign appropriate skill practice through **IXL** learning experiences.

### Grades 5-8

- Using data to assign appropriate skill practice through **IXL** and **Study Island** learning topics.
- Expose students to released test items from previous NJSLA to practice critical mathematical thinking and problem-solving using online computerized tools.

[Research Study](#) : *Measuring the Impact of IXL Math and IXL Language Arts in New Jersey Schools*

This study shows a statistically significant positive correlation between IXL usage and performance on state assessments.

# Subgroup NJSLA Reporting



**Unable to report publicly due to  
suppression rules**



# Access for ELLs and DLM



**Unable to report publicly due to  
suppression rules**

# **NJSLA Science - Grades 5 and 8**



**Scores unavailable at this time**

# NJSLA for 2020



- Margate has been selected to participate in the NJSLA Field Test for ELA. Students in grades 3-8 will take a third unit of English Language Arts.
- Test administrations will take place between **May 7- May 22, 2020.**

## ELA Units and Testing Times for Statewide Assessments<sup>1</sup>

### 2019 NJSLA-ELA – ELA Grade 3

Unit	Unit Testing Time (Minutes)
Unit 1	75
Unit 2	75
Total: 2 Units	Total: 150 Minutes

### 2019 NJSLA-ELA – ELA Grades 4 & 5

Unit	Unit Testing Time (Minutes)
Unit 1	90
Unit 2	90
Total: 2 Units	Total: 180 Minutes

*The ELA Field Test will add a third unit. We will not know which unit is the Field test.*

## Mathematics Units and Testing Times for Statewide Assessments

### 2019 NJSLA-Mathematics Grades 3 to 5

Unit	Unit Testing Time (Minutes)
Unit 1	60
Unit 2	60
Unit 3	60
3 Units	180 Minutes

### 2019 NJSLA-Mathematics Grades 6 to 8

Unit	Unit Testing Time (Minutes)
Unit 1	60
Unit 2	60
Unit 3	60
3 Units	180 Minutes

### 2019 NJSLA High School Algebra I, Geometry & Algebra II<sup>2</sup>

Unit	Unit Testing Time (Minutes)
Unit 1	90
Unit 2	90
2 Units	180 Minutes

## Science Units and Testing Times for Statewide Assessments

### 2019 NJSLA-Science Assessments Grade 5 & 8

Unit	Unit Testing Time (Minutes)
Unit 1	45
Unit 2	45
Unit 3	45
Unit 4	45
4 Units	180 Minutes

# RESOURCES FOR PARENTS

## State Information

[www.nj.gov/education/assessment](http://www.nj.gov/education/assessment)

## NJSLA Parent Portal

[nj-results.pearsonaccessnext.com/login](http://nj-results.pearsonaccessnext.com/login)

## NJDOE Digital Item Library

<https://nj.digitalitemlibrary.com/home>

## Understanding the Score Reports

[understandthescore.org](http://understandthescore.org)

## District Resources for PARCC

[www.margateschools.org/curr](http://www.margateschools.org/curr)