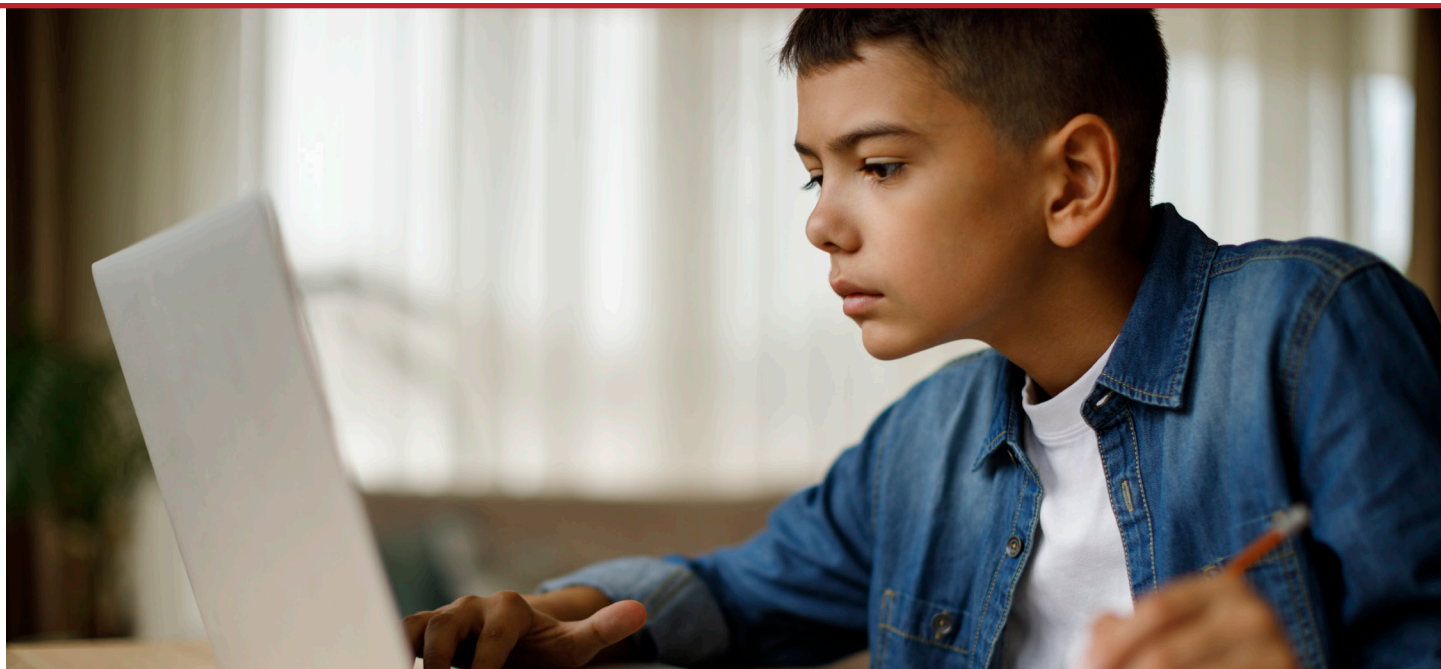




Meet the NYSED Reopening Guidance for Progress Monitoring ELLs



Given the challenges of COVID-19, schools and districts are adopting progress monitoring tools in order to address learning loss and to provide targeted instruction to English learners. LAS Links may be used multiple times in an academic year to monitor progress and student growth. LAS Links can also be delivered in remote environments. The following information demonstrates how LAS Links meets important criteria for progress monitoring in New York, as determined by THE STATE EDUCATION DEPARTMENT / THE UNIVERSITY OF THE STATE OF NEW YORK OFFICE OF BILINGUAL EDUCATION AND WORLD LANGUAGES.

Assessment Consideration	Yes/ No	Notes and Supporting Documentation
Is social language measured?	Yes	LAS Links measures social, intercultural, and instructional communication in each domain (Speaking, Listening, Reading and Writing).
Is academic language measured?	Yes	LAS Links measures academic language in each domain and provides language proficiency data in the areas of Mathematics, Science, Technical Subjects, Language Arts, Social Studies, and History.
Are literacy-based foundational skills measured for primary grades?	Yes	Foundational skills are measured in grades K-3.
Are all modalities (Listening, Speaking, Reading, Writing) measured?	Yes	Districts may choose whether all four (or specific domains) are measured.
Are comprehension skills measured?	Yes	The LAS Links Comprehension composite score is provided when students are administered both the Listening and Reading domains.
Are oral and listening comprehension skills measured?	Yes	The LAS Links Oral composite score is provided when students are administered both the Speaking and Listening domains.
Are literacy skills measured?	Yes	The LAS Links Literacy composite score is provided when students are administered both the Reading and Writing domains.
Are productive (writing and speaking) skills measured?	Yes	The LAS Links Productive composite score is provided when students are administered both the Speaking and Writing domains.

Assessment Consideration	Yes/ No	Notes and Supporting Documentation
Is there alignment to the NYS CCLS or Next Generation Standards?	Yes	LAS Links aligns to core content standards as well as to the NYSESLAT.
Are reading levels measured?	Yes	The LAS Links Reading domain provides a raw score, scale score, proficiency level as well as an academic score for reading language proficiency in the areas of Mathematics, Science, Technical Subjects, Language Arts, Social Studies and History. In addition, the LAS Links Reading Links report provides a student's Lexile Measure, recommended Lexile Range, and a provides a recommended reading list.
Are online and paper administrations available?	Yes	Both online and paper pencil forms are available for grades K-12 in English and Spanish New for Fall 2020, Remote Testing is available
Are aggregated data reports produced?	Yes	Summary of Skill Areas <ul style="list-style-type: none"> - Summary of Strands - Cohort Comparison - Matched Comparison - Item Summary Roster Reports <ul style="list-style-type: none"> - Student Roster - Longitudinal Roster - Reading Links/Lexile Roster - Item Roster
Are student progress reports produced?	Yes	Student Reports <ul style="list-style-type: none"> - Student Proficiency Report - Student Dashboard Report - Home Report - Reading Links/Lexile Report Also included in Roster Reports <ul style="list-style-type: none"> - Longitudinal Roster Report - Item Roster Report
Are translated versions of student progress reports produced?	Yes	The Student Proficiency and Home Reports are available in English and Spanish.
Are student targets based on research-based field-testing results?	Yes	LAS Links is a standardized test based on extensive field testing. Specific reports include an RGA (Reference Group Average). LAS Links technical documentation is available upon request.
Did the field-testing include a significant ELL population, representing varying language proficiency levels?	Yes	Over 75% of the samples were English language learners from Title III programs, and the rest either spoke English as their home language or were proficient English language learners who had been exempted or exited from Title III programs. Detailed technical documentation (field test data) is available upon request.
Are specific recommendations for student instruction produced?	Yes	DRC offers instructional guidance materials and an interactive digital library in addition to comprehensive training. DRC also offers Interpretation Guides that contain additional guidance and support for educators (available upon request).

**For more information about LAS Links,
visit www.LASLinks.com**

