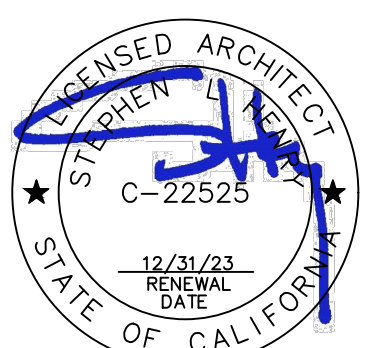


LIMITED PROJECT SCOPE DESCRIPTION

1. THE PROJECT SCOPE INTENDED TO BE DESCRIBED IN THESE DRAWINGS INCLUDES ONLY NEW CHAIN LINK FENCING SCOPE ON THE NORTH, EAST, SOUTH AND WEST PROPERTY BOUNDARIES. THE WORK SCOPE INCLUDES INSTALLATION OF NEW CHAIN LINK FENCING AND MODIFICATION OF EXISTING CHAIN LINK FENCING. SEE SITE PLAN SHEET AND DETAILS FOR EXACT SCOPE AND DETAILS.



**HENRY+
ASSOCIATES
ARCHITECTS**



COVER SHEET

PROJECT NO. 21-32-052	REVISIONS	BY
--------------------------	-----------	----

--	--

--	--

--	--


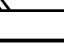
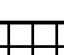
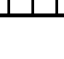



CS

P.P.	Kickplate	S.	South
P.K.T.	Kitchen	S.D.	Soap Dispenser
LAM.	Laminate	SECT.	Section
LAV.	Lavatory	SHR.	Shower
LCK.	Locker	SHT.	Sheet
L.T.WT.	Light Weight	SHGT.	Sheeting
L.V.	Louver Vent	SIM.	Similar
		S.M.	Sheet Metal
MAX.	Maximum	S.M.S.	Sheet Metal Screw
M.B.	Machine Bolt	S.N.D.	Sanitary Napkin Dispenser
MATL.	Material	S.N.R.	Sanitary Napkin Receptacle
MECH.	Mechanical	SPEC.	Specification
MEMB.	Membrane	SQ.	Square
MEZZ.	Mezzanine	S.R.V.	Self Rigid Vinyl
MFR.	Manufacturer	S.SK.	Service Sink
MH.	Manhole	SST.	Stainless Steel
MIN.	Minimum	ST.	Street
MIR.	Mirror	STD.	Standard
MISC.	Miscellaneous	STL.	Steel
MTD.	Mounted	STOR.	Storage
MET.	Metal	STRUL.	Structural
		SUSP.	Suspended
(N)	New	SYM.	Symmetrical
N	Nominal	SHT.VNL.	Sheet Vinyl
N.I.C.	Not in Contract		
NO.#	Number	T.	Toilet
NO.M.	Nominal	TB.	Tackboard
N.T.S.	Not to Scale	T.B.	Towel Bar
		T.G.&G.	Towel & Groove
O.	Over	TEL.	Telephone
O.A.	Overall	THK.	Thick
OBS.	Obscure	THRES.	Threshold
O.C.	On Center	THRU.	Through
O.D.	Outside Diameter	T.O.C.	Top of Curb
O.H.	Opposite Hand	T.O.P.	Top of Pavement
OFF.	Office	T.O.W.	Top of Wall
		T.P.D.	Towel Paper Dispenser
PRCST.	Precast	TYP.	Typical
PERF.	Perforated		
P.LAM.	Plastic Laminate	U.O.N.	Unless Otherwise Noted
PLAS.	Plaster	UR.	Urinal
PLYWD.	Plywood	V.C.T.	Vinyl Composition Tile
P.M.	Pressed Metal	VERT.	Vertical
P.M.F.	Pressed Metal Frame	V.F.	Vinyl Fabric
P.	Pair		
P.O.T.	Path of Travel	W.	West W/ With
PRE-FAB	Prefabricated	W.C.	Water Closet
PROJ.	Project	WD.	Wood
P.T.D.	Paper Towel Dispenser	W.H.	Water Heater
P.T.D./R.	Paper Towel Dispenser Receptacle	W/O	Without
PTN.	Partition	WSCST.	Wastcot
P.T.R.	Paper Towel Receptacle	W.W.M.	Welded Wire Mesh
		WDW.	Window
		WT.	Weight
R.	Riser	YD.	Yard
RAD.	Radius		
R.B.	Rubber Base		
R.D.	Roof Drain		
R.E.	Rim Elevation		
REFR.	Refrigerator		
RGTR.	Register		
REINF.	Reinforced		
REQ.	Required		
RETU.	Return		
RM.	Room		
R.O.	Rough Opening		
RWD.	Redwood		
R.W.L.	Rain Water Leader		
R.H.W.S.	Round Head Wood Screw		

PROJECT DESCRIPTION

1. PAINTING OF CLASSROOMS & REPLACEMENT OF FLOORING AT BUILDING A, B, C, D, AND E.
2. MODERNIZATION OF TOILET ROOMS AT BUILDINGS A, B, C, AND E.
3. D.A. PATH OF TRAVEL WALKWAY REPLACEMENT THROUGHOUT CAMPUS.
4. RECONFIGURATION AND EXPANSION OF EXISTING PARKING LOT.
5. OVERLAY, SEALING AND RESTRIPIING OF HARD COURTS.
6. CONSTRUCTION OF NEW BUS TURNOUT/DROP-OFF.

CONTRACTOR SHALL KEEP A COPY OF TITLE 24, PARTS 1-5 ON THE SITE AT ALL TIMES.
TITLE 24, PART 1, SECTION 4.317(c):

	WOOD TRIM
	STEEL
	TILE
	BATT INSULATION
	BRICK
	GYPSUM BOARD
	FIRTEX

TITLE 24 CCR, PUBLIC SAFETY, STATE FIRE MARSHAL REGULATIONS

TITLE 24 CCR, PART 1 - 2022 BUILDING STANDARDS ADMINISTRATIVE CODE

TITLE 24 CCR, PART 2 - 2019 CALIFORNIA BUILDING CODE, VOL. 1 & 2 (CBC)

TITLE 24 CCR, PART 3 - 2019 CALIFORNIA ELECTRICAL CODE (CEC)

TITLE 24 CCR, PART 4 - 2019 CALIFORNIA MECHANICAL CODE (CMC)

TITLE 24 CCR, PART 5 - 2019 CALIFORNIA PLUMBING CODE (CPC)

TITLE 24 CCR, PART 6 - 2019 CALIFORNIA ENERGY CODE (CEC)

TITLE 24 CCR, PART 9 - 2019 CALIFORNIA FIRE CODE (CFC)

TITLE 24 CCR, PART 11 - 2019 CALIFORNIA GREEN BUILDING STDS CODE

TITLE 24 CCR, PART 12 - 2019 CALIFORNIA REFERENCED STANDARDS

2016 NFPA 13, INSTALLATION OF SPRINKLER SYSTEMS (CA AMENDED)

2016 NFPA 14, INSTALLATION OF STANDPIPE AND HOSE SYSTEMS

2017 NFPA 17, DRY CHEMICAL EXTINGUISHING SYSTEMS

2017 NFPA 17A, WET CHEMICAL EXTINGUISHING SYSTEMS

2016 NFPA 20, INSTALLATION OF STATIONARY PUMPS FOR FIRE PROTECTION

2016 NFPA 24, INSTALLATION OF PRIVATE FIRE SERVICE MAINS

2016 NFPA 72, NATIONAL FIRE ALARM CODE (CA AMENDED)

2016 NFPA 80, FIRE DOOR AND OTHER OPENING PROTECTIVE

2015 NFPA 720, INSTALLATION OF CARBON MONOXIDE DETECTION AND WARNING DEVICES

2016 NFPA 2001, CLEAN AGENT FIRE EXTINGUISHING SYSTEMS

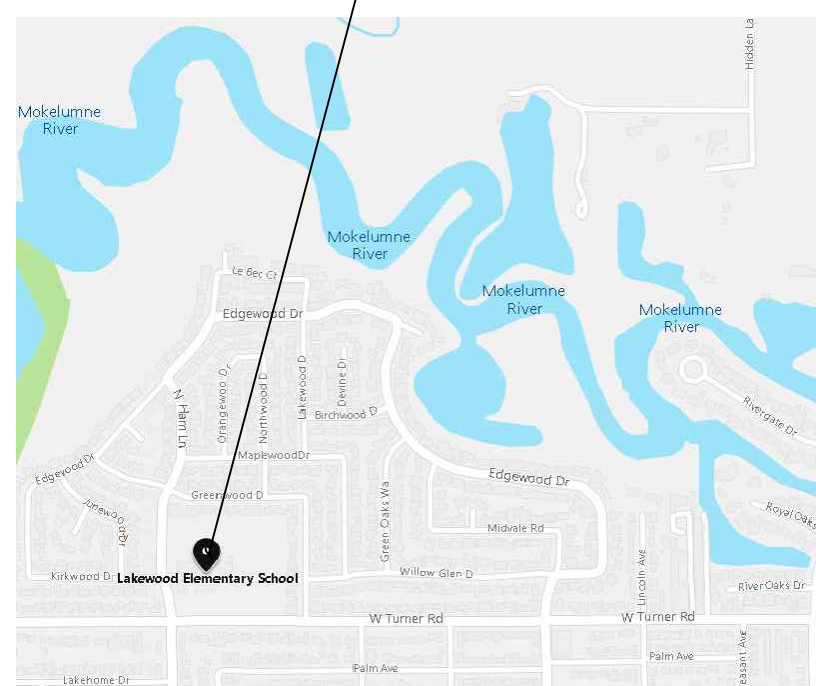
THE INTENT OF THESE DRAWINGS AND SPECIFICATIONS IS THAT THE WORK OF THE ALTERATION, REHABILITATION OR RECONSTRUCTION IS TO BE IN ACCORDANCE WITH TITLE 24, CALIFORNIA CODE OF REGULATIONS. SHOULD ANY EXISTING CONDITIONS SUCH AS DETERIORATION OR NONCOMPLYING CONSTRUCTION BE DISCOVERED WHICH IS NOT COVERED BY THE CONTRACT DOCUMENTS WHEREIN THE FINISHED WORK WILL NOT COMPLY WITH TITLE 24, CALIFORNIA CODE OF REGULATIONS A CONSTRUCTION CHANGE DOCUMENT, OR SEPARATE SET OF PLANS AND SPECIFICATIONS, DETAILING AND SPECIFYING THE REQUIRED REPAIR WORK SHALL BE SUBMITTED TO AND APPROVED BY DSA BEFORE PROCEEDING WITH REPAIR WORK."

NOTES:

1. ALL NEW WORK SHALL CONFORM TO THE 2019 EDITION, TITLE 24, CALIFORNIA CODE OF REGULATIONS.
2. CHANGES TO THE STRUCTURAL, ACCESSIBILITY OR FIRE AND LIFE-SAFETY PORTIONS OF THE APPROVED PLANS AND SPECIFICATIONS AFTER THE WORK HAS BEEN APPROVED SHALL BE MADE BY A CONSTRUCTION CHANGE DOCUMENT AS REQUIRED IN SECTION 4-338, PART 1, CAC AND SHALL BE SUBMITTED TO AND APPROVED BY DSA PRIOR TO COMMENCEMENT OF THE WORK. ALL CONSTRUCTION CHANGE DOCUMENTS SHALL BE PREPARED AND SUBMITTED TO DSA BY THE ARCHITECT IN ACCORDANCE WITH THE PROVISIONS OF REGULATIONS A-4.6. CONSTRUCTION CHANGE DOCUMENTS ARE NOT VALID UNTIL APPROVED BY DSA PER SECTION 4-338, PART 1, TITLE 24, AND NO WORK SHALL COMMENCE UNTIL APPROVED BY DSA.
3. A DSA CERTIFIED PROJECT INSPECTOR EMPLOYED BY THE DISTRICT (OWNER) AND APPROVED BY THE DIVISION OF THE STATE ARCHITECT SHALL PROVIDE CONTINUOUS INSPECTION OF THE WORK. THE DUTIES OF THE INSPECTOR ARE DEFINED IN SECTION 4-343, CALIFORNIA BUILDING STANDARDS ADMINISTRATIVE CODE (PART 1, TITLE 24, CCR)
4. A DSA CERTIFIED INSPECTOR WITH CLASS 3 IS REQUIRED FOR THIS PROJECT (IR A-7)
5. ALL TESTING LABORATORY DIRECTLY EMPLOYED BY THE OWNER SHALL CONDUCT ALL THE REQUIREMENTS AND INSPECTIONS FOR THE PROJECT.
6. GRADING PLANS, DRAINAGE IMPROVEMENT, ROAD AND ACCESS REQUIREMENTS AND ENVIRONMENTAL HEALTH CONSIDERATIONS SHALL COMPLY WITH ALL LOCAL ORDINANCES.
7. ADDENDUM SHALL BE APPROVED BY DSA.

1. (NONE)

LAKEWOOD ELEMENTARY SCHOOL
1100 N. HAM LANE, LODI, CA 95242
PROJECT LOCATION



CIVIL

C5.1 DETAILS
C5.2 DETAILS AND SECTIONS
C6.1 EROSION CONTROL PLAN
C-1 COVER SHEET - FRONTAGE IMPROVEMENTS
C-2 GENERAL NOTES - FRONTAGE IMPROVEMENTS
C-3 IMPROVEMENT PLAN - FRONTAGE IMPROVEMENTS

LANDSCAPE

- L0.1 TREE SHADING PLAN
- L0.2 TREE SHADING PLAN
- L1.1 TREE PLANTING PLAN
- L1.2 TREE PLANTING PLAN
- L2.1 SHRUB PLANTING PLAN
- L2.2 SHRUB PLANTING PLAN
- L3.1 LANDSCAPE IRRIGATION PLAN
- L3.2 LANDSCAPE IRRIGATION PLAN
- L4.1 LANDSCAPE PLANTING DETAILS
- L4.2 LANDSCAPE IRRIGATION DETAILS
- S.1 WATER EFFICIENCY CHARTS

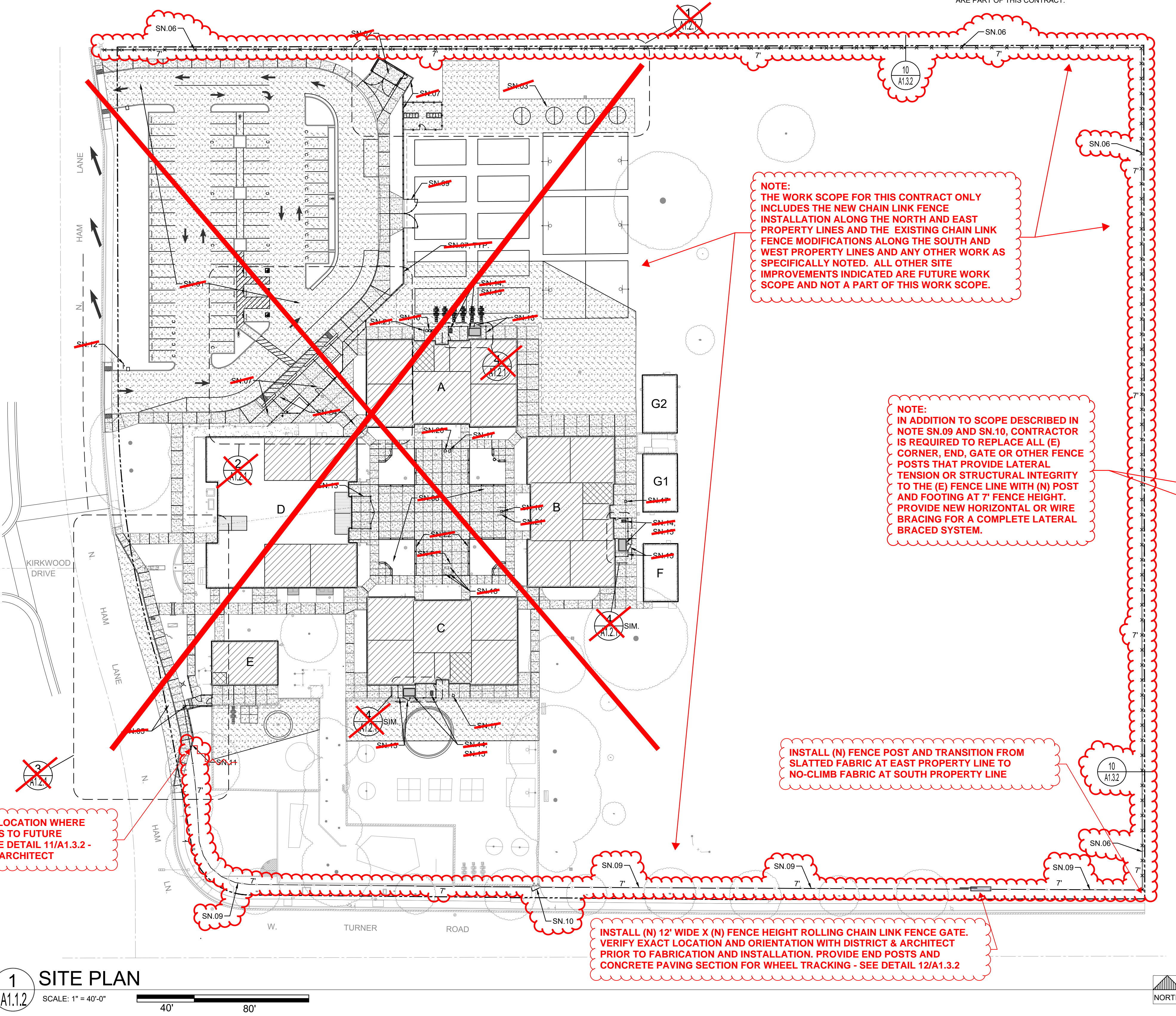
■ DRAWING SET CONTAINS 3 SHEETS ■

1. SEE DETAIL 1/A1.3.2 FOR TYPICAL CHAIN LINK FENCE CONSTRUCTION.
2. SEE DETAILS 3 & 7/A1.3.2 FOR TYPICAL ACCESSIBLE MANGATE CONSTRUCTION.
(NOTE: THE PROJECT SCOPE MAY NOT REQUIRE INSTALLATION OF THIS TYPE OF GATE - VERIFY).
3. SEE DETAIL 2/A1.3.2 FOR TYPICAL DOUBLE CHAIN LINK FENCE GATE.
(NOTE: THE PROJECT SCOPE MAY NOT REQUIRE INSTALLATION OF THIS TYPE OF GATE - VERIFY).

1. SAFETY: CONTRACTOR SHALL BE SOLELY AND COMPLETELY RESPONSIBLE FOR THE CONDITIONS OF THE PREMISES ON WHICH THE WORK IS PERFORMER AND FOR THE SAFETY OF ALL PERSONS AND PROPERTY ON THE SITE BOTH DURING AND OUTSIDE OF NORMAL WORKING HOURS, UNTIL SUCH WORK IS ACCEPTED BY THE OWNER.
2. UNDERGROUND SERVICES: THE CONTRACTOR SHALL BE RESPONSIBLE FOR CONTACTING ALL UTILITY COMPANIES AND/OR UTILITY DISTRICTS AS TO THE LOCATION OF ALL TO THE UNDERGROUND FACILITIES. THE CONTRACTOR SHALL BE RESPONSIBLE FOR UNDERGROUND UTILITIES OR OTHER BURIED OBJECTS WHICH MAY BE ENCOUNTERED BUT WHICH ARE NOT SHOWN ON THESE DRAWINGS.
3. USE OF BARRICADES AND SITE CONTROLS: WHEN THE WORK AREA HAS TRENCHES OR DITCHES DEEPER THAN ONE FOOT, THE CONTRACTOR SHALL PROVIDE FENCING AND BARRICADES AT SUCH TRENCHES OR DITCHES DURING THE WORK DAY. CONTRACTOR SHALL EXPEDITE THE FILLING AND COMPACTING OF SUCH TRENCHES OR DITCHES.
4. QUANTITIES: MATERIAL QUANTITIES IF ANY ARE NOTED ON THESE DRAWINGS ARE NOT GUARANTEED CONTRACT QUANTITIES. CONTRACTOR IS TO PERFORM HIS OWN ESTIMATES AND QUANTITY TAKE-OFFS. CONTRACTOR IS TO PROVIDE ALL MATERIALS NECESSARY TO COMPLETE THE PROJECT, EVEN IF QUANTITIES ARE DIFFERENT THAN THOSE SHOWN ON THE DRAWINGS.
5. PRE-EXISTING CONDITIONS
 - a. IF CONTRACTORS SHALL VISIT THE SITE AND BECOME FAMILIAR WITH EXISTING OBSERVABLE SITE CONDITIONS PRIOR TO SUBMITTING BID.
 - b. ALL ITEMS NOT SHOWN AS (E) EXISTING SHALL BE CONSIDERED NEW AND ARE PART OF THIS CONTRACT.

PROPERTY LINE	
<p>ACCESSIBLE PATH OF TRAVEL SEE NOTES THIS SHEET</p> <p>Expansion Joint (20'-0" Max. Spacing U.O.N.) - Shown Darker</p> <p>(N) CONCRETE WALK CONSTRUCTION</p> <p>NOTE: FOLLOW JOINT PATTERN AS SHOWN ON SITE PLAN</p> <p>Control Joint (10'-0" Max. Spacing U.O.N.) - Shown Lighter</p>	
<p>(N) ORNAMENTAL METAL FENCE</p> <p>(E) ORNAMENTAL METAL FENCE TO REMAIN</p> <p>(N) CHAIN LINK FENCE W/ SLATS</p> <p>(E) CHAIN LINK FENCE TO REMAIN</p> <p>(N) CHAIN LINK FENCE FABRIC TO BE INSTALLED O/(E) MODIFIED FENCE FRAME</p>	<p>DRAINAGE STRUCTURE - SEE CIVIL</p> <p>○ CLEAN OUT</p> <p>□ AREA DRAIN</p> <p>● MAN HOLE COVER</p> <p>□ DROP INLET</p> <p>□ TRENCH DRAIN</p>
<p>(N) CHAIN LINK FENCE FABRIC TO BE INSTALLED O/(E) MODIFIED FENCE FRAME</p>	<p>ELECTRICAL STRUCTURE - SEE ELECTRICAL</p> <p>○ POLE MOUNTED FIXT. TOP MOUNTED</p> <p>○ POLE MOUNTED FIXT. TWIN HEAD</p> <p>○ POLE MOUNTED FIXT. SINGLE HEAD</p> <p>☑ UNDERGROUND PULLBOX</p> <p>Ⓣ TRANSFORMER</p> <p>▨ SWITCHBOARD</p>
<p>(E) FIRE HYDRANT</p> <p>POST INDICATOR & VALVE (PIV)</p> <p>BACKFLOW PREVENTER</p> <p>METER AND BACKFLOW</p> <p>TRUNCATED DOMES</p>	
<p>NEW BUILDING</p> <p>EXISTING AREA OF BUILDING TO BE MODERNIZED</p> <p>EXISTING TOILET ROOM TO BE MODERNIZED</p> <p>EXISTING TOILET ROOM - NO WORK</p> <p>NEW CONCRETE WALKWAY</p> <p>(N) ASPHALTIC CONCRETE PAVING</p> <p>EXISTING WALKWAY TO REMAIN</p>	

SN.01	(N) PARKING LOT, WALKWAYS AND LANDSCAPING - SEE CIVIL AND LANDSCAPE DRAWINGS
SN.02	(N) TRASH ENCLOSURE - SEE CIVIL AND STRUCTURAL DRAWINGS
SN.03	(N) TETHERBALL COURTS - SEE ENLARGED PLAN AND CIVIL SHEETS.
SN.04	(N) ENTRY AREA, GATE, FENCING, BENCHES & PLANTERS - SEE CIVIL, LANDSCAPE, ELECTRICAL & ENLARGED PLAN
SN.05	(N) CONCRETE STAIR, WALKWAYS & BUS TURNOUT - SEE CIVIL DRAWINGS
SN.06	(N) 7' TALL SALTED CHAIN LINK FENCE W/ 1 3/4" SQUARE X 9 GA. MESH FABRIC W/ 7/8" HOPE SLATS ALONG ENTIRE NORTH AND EAST PROPERTY LINES INSTALLED JUST INSIDE OF (E) CHAIN LINK FENCE - SEE DETAIL 10/A1.3.2.
SN.07	SEE CIVIL FOR EXTENT OF DEMOLITION OF (E) ORNAMENTAL IRON FENCING. CONTRACTOR IS REQUIRED TO SALVAGE AND PROTECT (E) ORNAMENTAL IRON FENCE PANELS, GATES AND POSTS (IF SALVAGEABLE) AND STORE FOR REUSE. (E) SALVAGED AND/OR ORNAMENTAL IRON FENCE COMPONENTS AT (N) LOCATION AND CONFIGURATION AS INDICATED HERE AND ON CIVIL DRAWINGS. (E) ORNAMENTAL IRON FENCING COMPONENTS THAT MAY BE SALVAGED INCLUDE APPROXIMATELY 27-WHOLE PANELS, 3-PARTIAL PANELS, GATE ASSEMBLIES, 1-PAIR VEHICLE GATES AND 27-LINE POSTS. SEE QUANTITIES FOR ONLY APPROXIMATE AND THE CONTRACTOR IS REQUIRED TO FIELD VERIFY EXACT QUANTITIES, CONDITIONS AND SALVAGEABILITY OF THE (E) ORNAMENTAL IRON FENCE COMPONENTS.
SN.08	(N) QUAD AREA CONCRETE WALKWAYS, PLANTERS, BENCHES-SEE CIVIL AND LANDSCAPE
SN.09	(E) CHAIN LINK FENCE FABRIC TO BE REMOVED, POSTS TO BE INCREASED IN HEIGHT TO 7', RAILS TO BE ADJUSTED FOR (N) FENCE HEIGHT AND (N) NO-CLIMB FENCE FABRIC TO BE INSTALLED ONTO (E) MODIFIED FENCE FRAME. -SEE DETAIL 9/A1.3.2
SN.10	(E) CHAIN LINK GATES TO BE REMOVED AND REPLACED WITH SAME SIZE AS (E) GATES AND TO MATCH THE (N) MODIFIED FENCE HEIGHT. INSTALL NO-CLIMB FENCE FABRIC ON (N) GATE FRAME. -SEE DETAIL 4/A1.3.2
SN.11	PROVIDE UTILITY FENCE POSTS AND (N) NO-CLIMB FENCE FABRIC WHERE FENCE LINE AND CONFIGURATION HAVE BEEN MODIFIED TO ACCOMMODATE (E) OR (N) GRADE MOUNTED UTILITY EQUIPMENT AT THIS LOCATION.
SN.12	REPLACE (E) PARKING LOT ENTRANCE SIGN W/ (N) PARKING LOT ENTRANCE SIGN - SEE CIVIL
SN.13	(E) CHAIN LINK FENCE FABRIC AND GATES AT (E) HVAC EQUIPMENT YARD OR STORAGE YARD TO BE REMOVED AND STORED AND PROTECTED. GATE AND FENCE POSTS TO REMAIN AND PROTECTED AGAINST DAMAGE DURING DEMOLITION AND CONCRETE POUR. FOLLOWING INSTALLATION OF (N) CONCRETE WALKWAYS, ADJUST FENCE FRAME TO ACCOMMODATE (N) TOP OF WALKWAY ELEVATION, AND REINSTALL THE (E) GATE AND FENCE FABRIC O/ (E) POSTS.
SN.14	WRAP THE (E) HVAC UNITS, CONDUIT, LINE SETS AND DUCTWORK WITH HEAVY PLASTIC SHEET AND PROTECT AGAINST CONCRETE SPILLERS-DUST AND OTHER DAMAGE DURING CONCRETE WALKWAY DEMOLITION AND NEW CONSTRUCTION OPERATIONS. SEE CIVIL FOR EXTENT OF WALKWAY DEMOLITION AND REPLACEMENT.
SN.15	DISCONNECT (E) DUCT SUPPORTS FROM CONCRETE WALKWAY AND DUCTS AS REQUIRED. TEMPORARILY SUPPORT DUCTS AS REQUIRED TO ALLOW FOR REMOVAL OF (E) CONCRETE WALKWAY AND INSTALLATION AND FINISHING OF (N) CONCRETE WALKWAY. ADJUST (E) DUCT SUPPORTS AS REQUIRED FOR (N) TOP OF WALKWAY ELEVATION AND FASTEN TO CONCRETE WALKWAY USING FASTENER TYPES TO MATCH (E).
SN.16	(E) DRINKING FOUNTAIN TO BE REMOVED STORED AND PROTECTED DURING WALKWAY DEMOLITION AND (N) CONSTRUCTION. PROTECT (E) PLUMBING WASTE & SUPPLY LINES DURING CONSTRUCTION. FOLLOWING INSTALLATION OF (N) WALKWAY, ADJUST/EXTEND/MODIFY (E) PLUMBING LINES AND REINSTALL DRINKING FOUNTAIN PER MANUFACTURER'S RECOMMENDATIONS.
SN.17	(E) ACCESSIBLE BOTTLE FILLER TO BE REMOVED STORED AND PROTECTED DURING WALKWAY DEMOLITION AND (N) CONSTRUCTION. PROTECT (E) PLUMBING WASTE & SUPPLY LINES DURING CONSTRUCTION. FOLLOWING INSTALLATION OF (N) WALKWAY, ADJUST/EXTEND/MODIFY (E) PLUMBING LINES AND REINSTALL BOTTLE FILLER PER MANUFACTURER'S RECOMMENDATIONS.
SN.18	REMOVE TWO (E) DRINKING FOUNTAINS THIS LOCATION AND INSTALL (N) CHILD HEIGHT ACCESSIBLE, HI-LOW STYLE DRINKING FOUNTAIN. MODIFY PLUMBING SUPPLY AND WASTE LINES AS REQUIRED - SEE PLUMBING AND DETAIL 7/A0.2
SN.19	THIS (E) DRINKING FOUNTAIN IS ADULT HEIGHT ACCESSIBLE WITH BUBBLER HEIGHT AT 36" ABOVE CONCRETE WALK.
SN.20	(E) DRINKING FOUNTAIN TO BE REMOVED. CAP PLUMBING BELOW GRADE.
SN.21	FOLLOWING REINSTALLATION OF (E) D.F. INSTALL NEW CANE RAILS PER DETAIL 6/A0.2
SN.22	(N) 8' LONG METAL BENCH, TYPICAL OF 24 - SEE DETAIL 9/A1.3.1 FOR MOUNTING DETAIL.



IDENTIFICATION STAMP
DIV. OF THE STATE ARCHITECT
APP: 02-120455 INC:
REVIEWED FOR
SS ☒ FLS ☒ ACS ☒
DATE: 01/12/2023

730 Howe Avenue, Suite 450
Sacramento, CA 95825
Phone: 916.921.2112
Fax: 916.921.2212



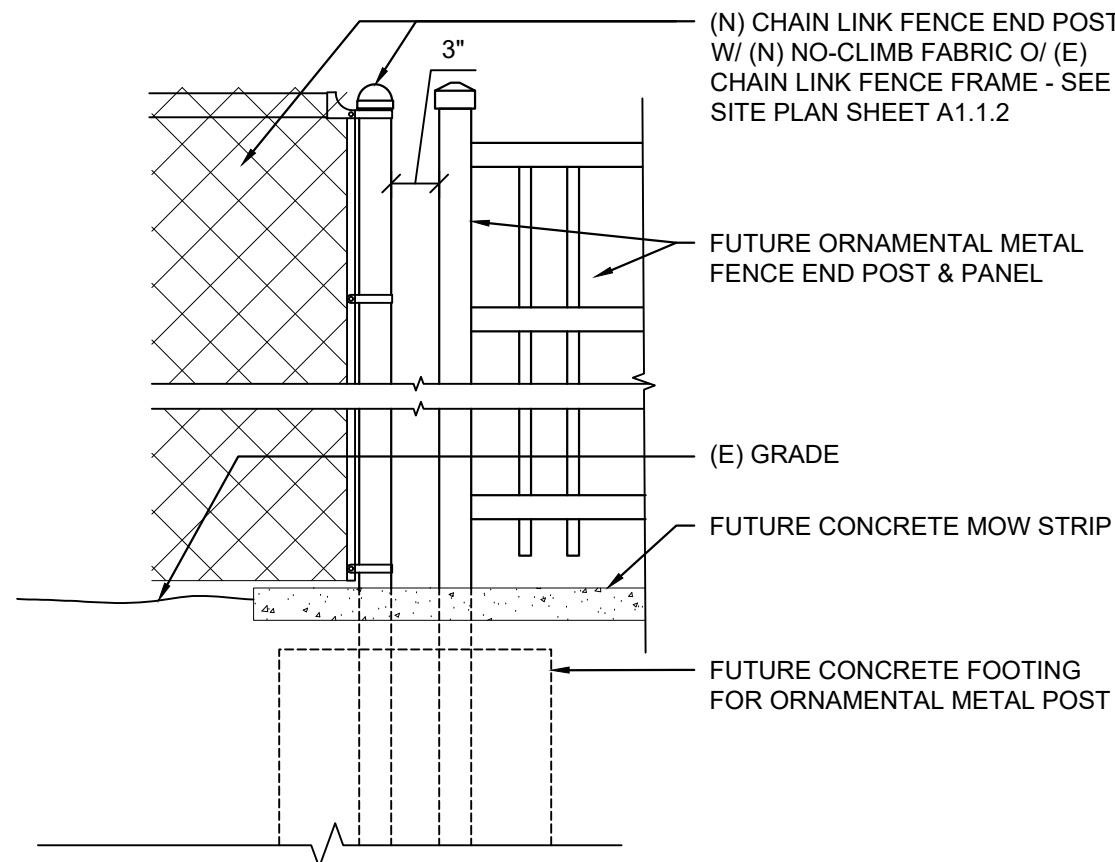
MODERNIZATION LAKEWOOD
ELEMENTARY SCHOOL

SITE PLAN

CONSULTANT	
------------	--

PROJECT NO. 21-32-052	REVISIONS	BY
DATE 3/28/2022		
DRAWN MS		
CHECKED JCBS		
SCALE AS SHOWN		
CADFILE		
UPDATED 04/11/23		
SHEET NO.		

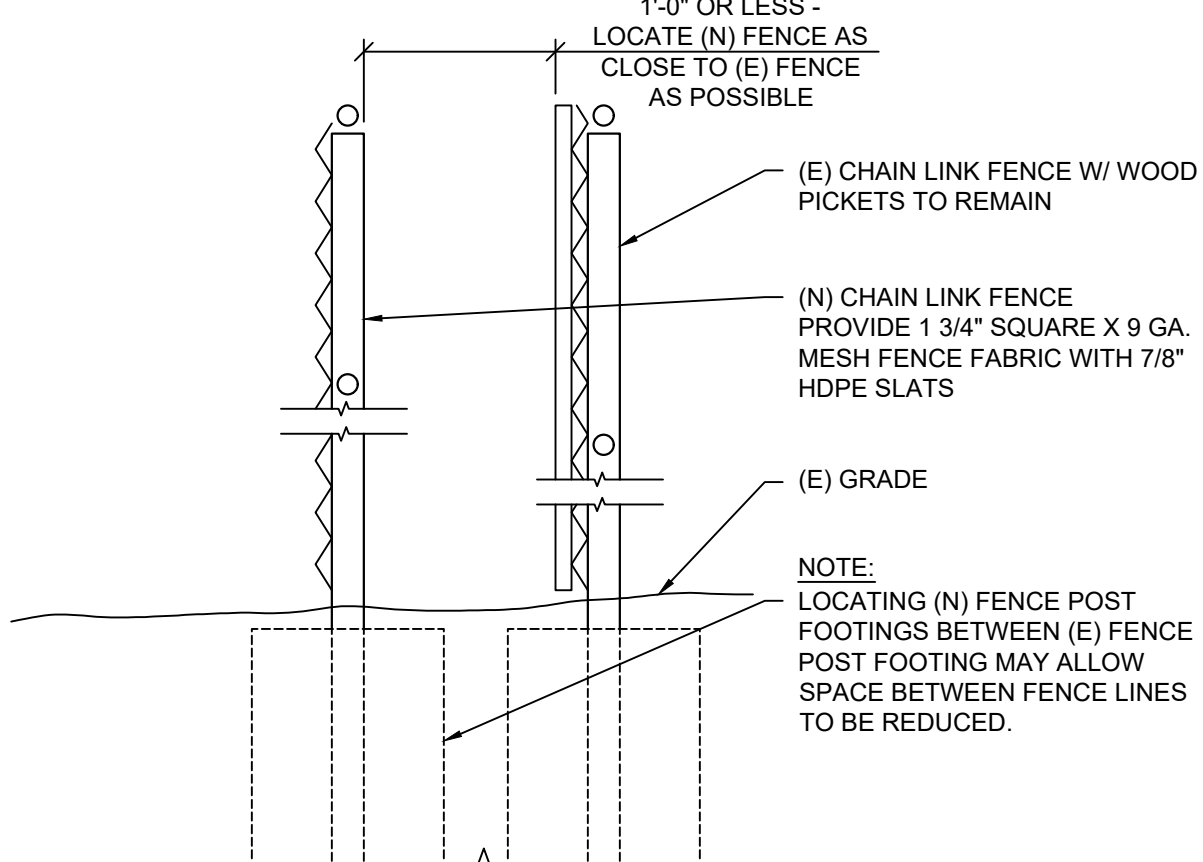
A1.1.2



FENCING TRANSITION

11

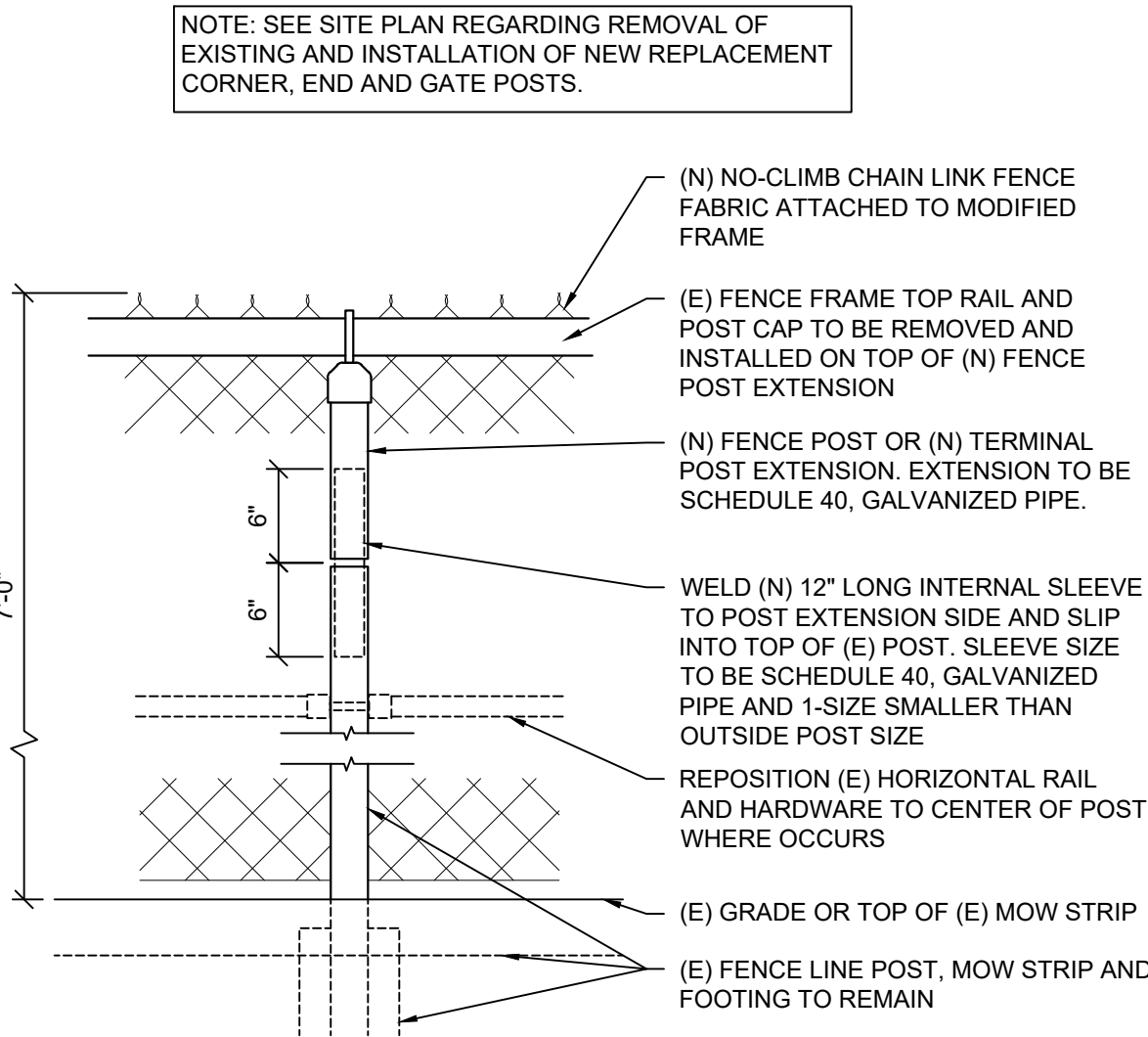
N.T.S.



(N) CHAIN LINK FENCE @ (E)

10

1" = 1'-0"



FENCE HEIGHT EXTENSION

9

1" = 1'-0"

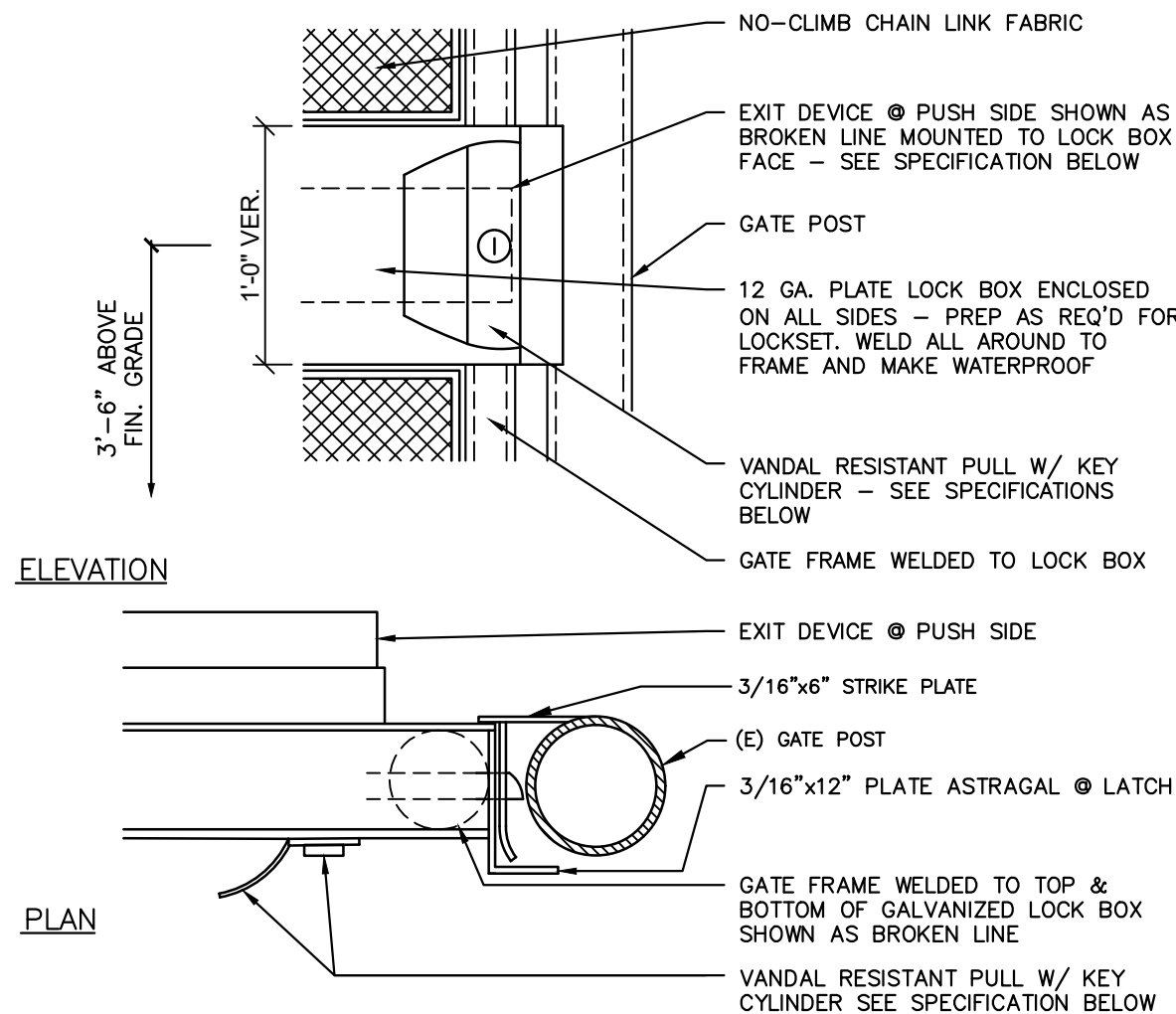
NOTES

1. MATERIALS FOR CHAIN LINK FENCE AND GATES SHALL CONFORM TO CALTRANS SECTION 206-6 OF THE STANDARD SPECIFICATIONS EXCEPT AS INDICATED HERON OR MODIFIED BY PROJECT PLANS.
2. FABRIC SHALL HAVE KNUCKLED FINISH ON BOTH TOP AND BOTTOM EDGES.
3. ALL GATE HINGES SHALL BE HEAVY DUTY MALLEABLE IRON OR STEEL, INDUSTRIAL SERVICE TYPE AND NOT LESS THAN 3-INCHES IN WIDTH.
4. ALL COMPONENTS SHALL BE GALVANIZED STEEL.
5. CONSTRUCTION OF CHAIN LINK FENCE OR GATES SHALL CONFORM TO CALTRANS SECTION 304-3 OF THE STANDARD SPECIFICATIONS EXCEPT AS INDICATED HERON OR MODIFIED BY PROJECT PLANS.
6. CAP OR TOP SHALL BE SECURED TO POST USING 1/4-INCH RIVET.
7. CORNER OR SLOPE POSTS SHALL BE INSTALLED WHEN THE CHANGE IN DEFLECTION ANGLE IS 30 DEGREES OR MORE AT CORNER OR SLOPE POINTS. CONSTRUCT SLOPE POSTS AS THOUGH THEY WERE CORNER POSTS.
8. INTERMEDIATE POSTS SHALL BE PROVIDED WHEN THE DISTANCE BETWEEN CORNER OR SLOPE POSTS EXCEEDS 300 FEET. THEY SHALL BE CONSTRUCTED AS THOUGH THEY WERE CORNER OR SLOPE POSTS.
9. THREADS OF ALL 3/8-INCH ROUND TRUSS RODS SHALL BE PEENED AFTER INSTALLATION.
10. WHEN TOP RAIL IS OMITTED BY PLAN, PROVIDE 7-GAGE TENSION WIRE WITH 11-GAGE FABRIC TIES OR HOG RINGS SPACED AT 24-INCH INTERVALS.
11. GATES SHALL BE PROVIDED WITH A COMBINATION SPRING LATCH AND PLUNGER ROD, APPROVED BY THE ARCHITECT.
12. TENSION WIRE SHALL BE SECURELY FASTENED TO THE TERMINAL POSTS AND BE TAUT AND FREE OF SAG.
13. THE FABRIC SHALL BE PLACED ON THE OUTWARD FACING SIDE OF THE POSTS, STRETCHED TAUT, AND FASTENED SECURELY.

FENCE, POST AND GATE NOTES

8

N.T.S.



SEE ELEVATION ABOVE FOR ADDITIONAL NOTES

ACCESSIBLE LOCKSET ASSEMBLY

7

N.T.S.

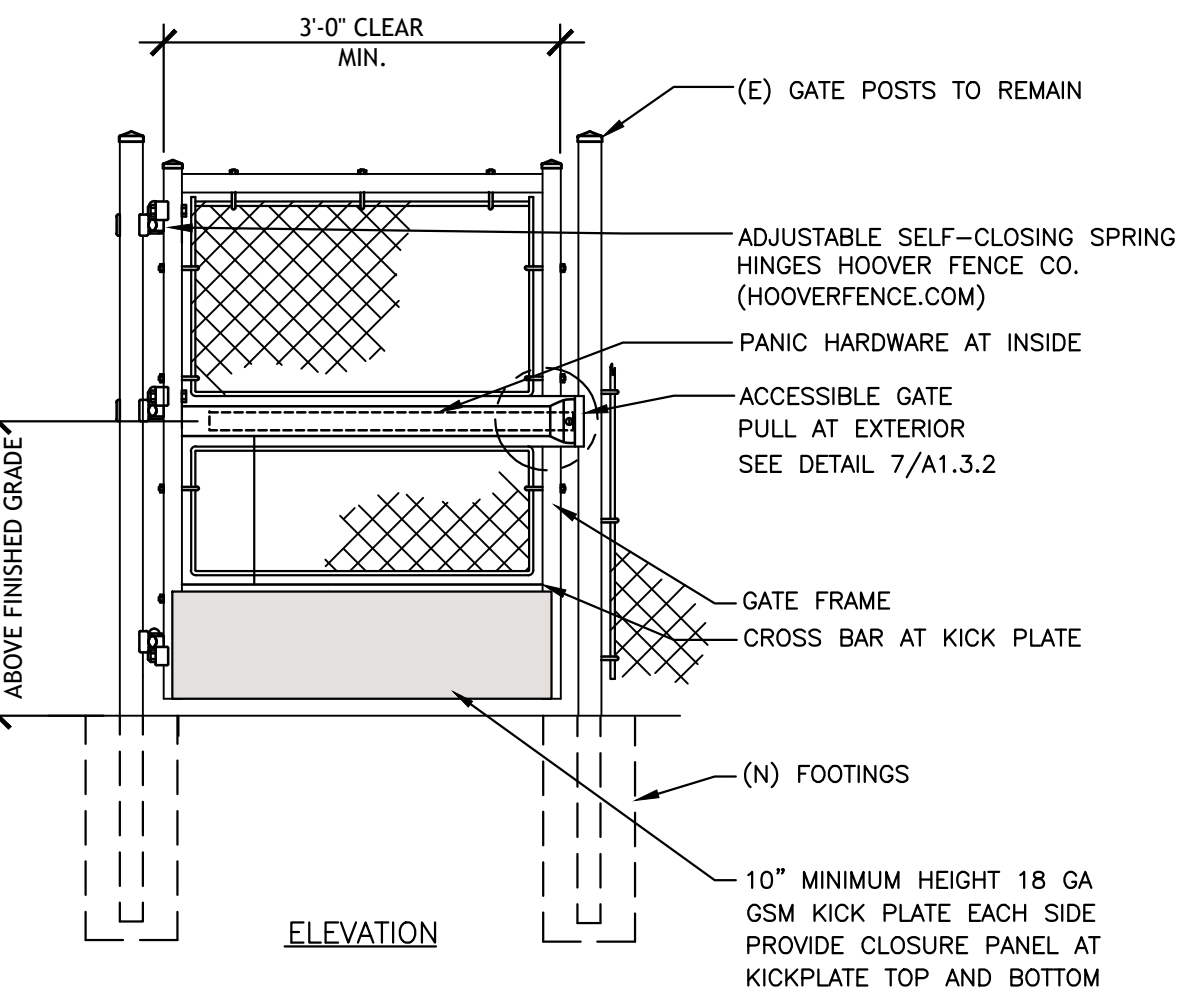
GATE POST FOOTING SCHEDULE			
GATE WIDTH		FOOTING MIN. DEPTH, D.	
SINGLE GATE	DOUBLE GATE	H TO 6'	H>6' TO 8'
TO 8'	TO 16'	3'-0"	3'-0"
> 8' TO 10'	> 16' TO 20'	3'-0"	3'-9"
> 10' TO 12'	> 20' TO 24'	3'-6"	4'-3"
> 12' TO 13'	> 24' TO 26'	4'-0"	4'-6"
> 13' TO 14'	> 26' TO 28'	3'-0"	3'-6"
> 14' TO 16'	> 28' TO 32'	3'-3"	4'-0"
> 16' TO 18'	> 32' TO 26'	3'-9"	4'-6"
> INDICATES "GREATER THAN"			

GATE POST SCHEDULE				
FENCE HEIGHT (H)	GATE WIDTH	NOMINAL SIZE OF PIPE INCHES	ACTUAL O.D. INCHES	WEIGHT PER FOOT POUNDS
LESS THAN 6 FEET	SINGLE GATES 6 FEET OR LESS AND DOUBLE GATES 12 FEET OR LESS	2 1/2	2.875	5.79
*	SINGLE SWING GATES OVER 6 FEET THRU 13 FEET AND DOUBLE DATES OVER 12 FEET THRU 26 FEET	3 1/2	4.0	9.11
*	SINGLE SWING GATES OVER 13 FEET THRU 18 FEET AND DOUBLE GATES OVER 26 FEET THRU 36 FEET	4	4.5	10.79
6 FEET TO 8 FEET INCLUSIVE	SINGLE GATES 6 FEET OR LESS AND DOUBLE GATES 12 FEET OR LESS	2 1/2	2.875	5.79
*	SINGLE SWING GATES OVER 6 FEET THRU 13 FEET AND DOUBLE DATES OVER 12 FEET THRU 26 FEET	4	4.5	10.79
*	SINGLE SWING GATES OVER 13 FEET THRU 18 FEET AND DOUBLE GATES OVER 26 FEET THRU 36 FEET	5	5.563	14.62

GATE POST & GATE POST FOOTING SCHEDULE

6

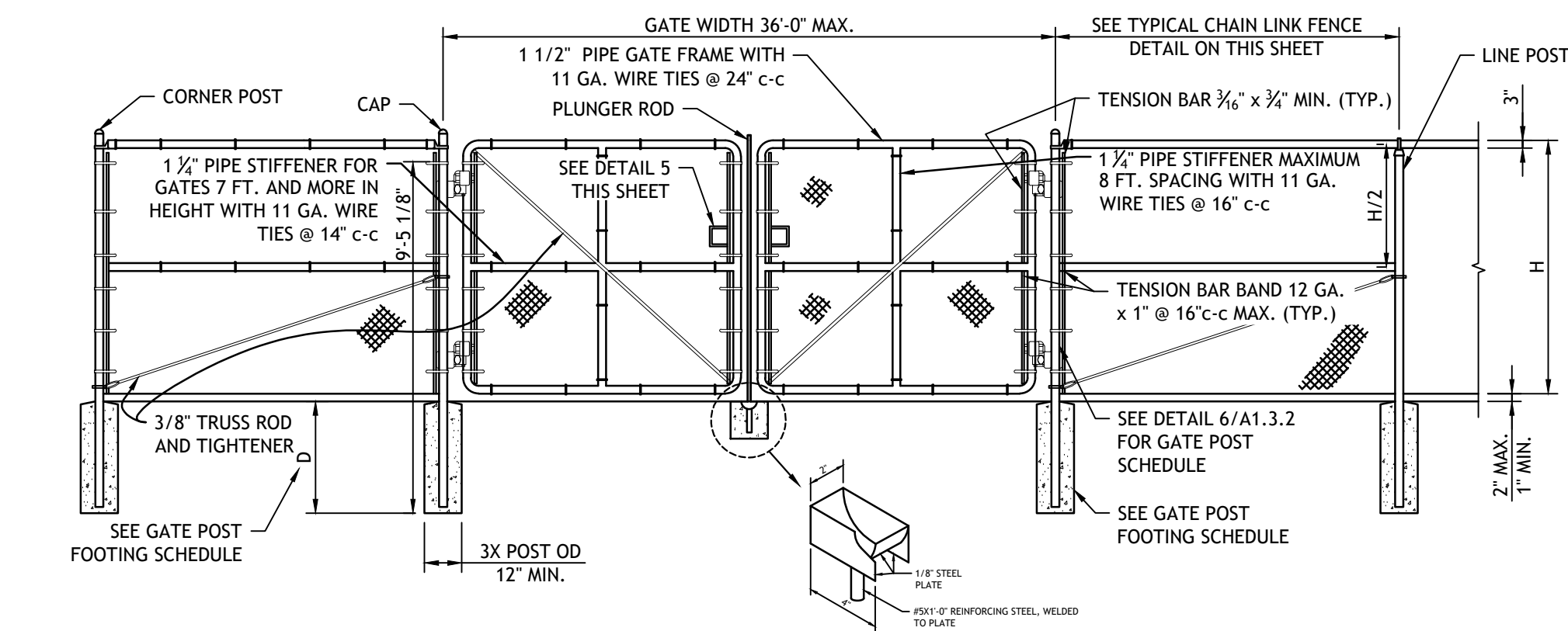
N.T.S.



ACCESSIBLE CHAIN LINK GATE

3

N.T.S.



DOUBLE CHAIN LINK FENCE GATE

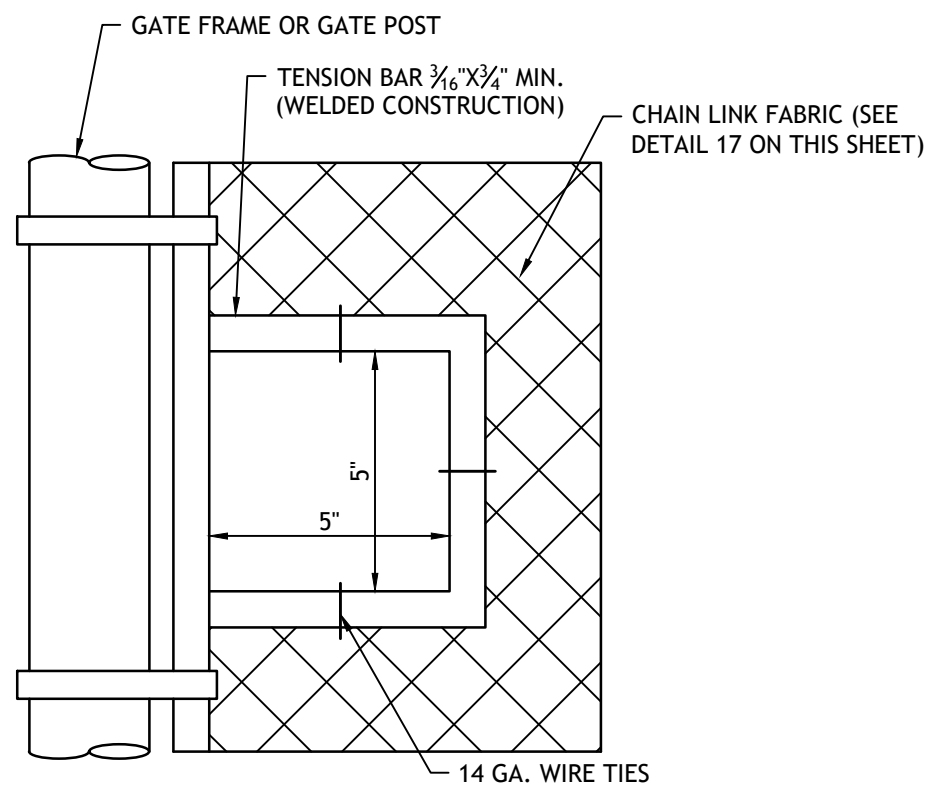
2

N.T.S.

ROLLING CHAIN LINK FENCE GATE

12

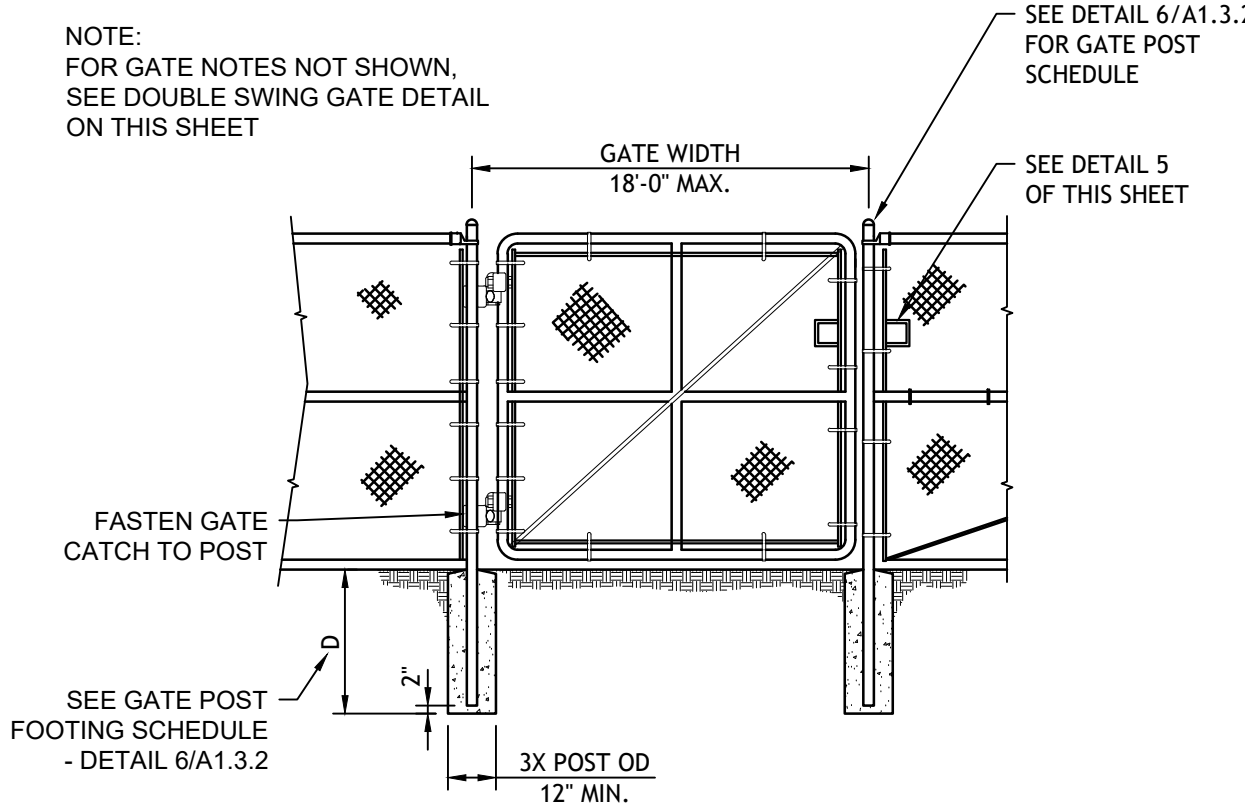
N.T.S.



CUT OUT CHAIN LOCK/ FENCE POST FOOTING SCHEDULE

5

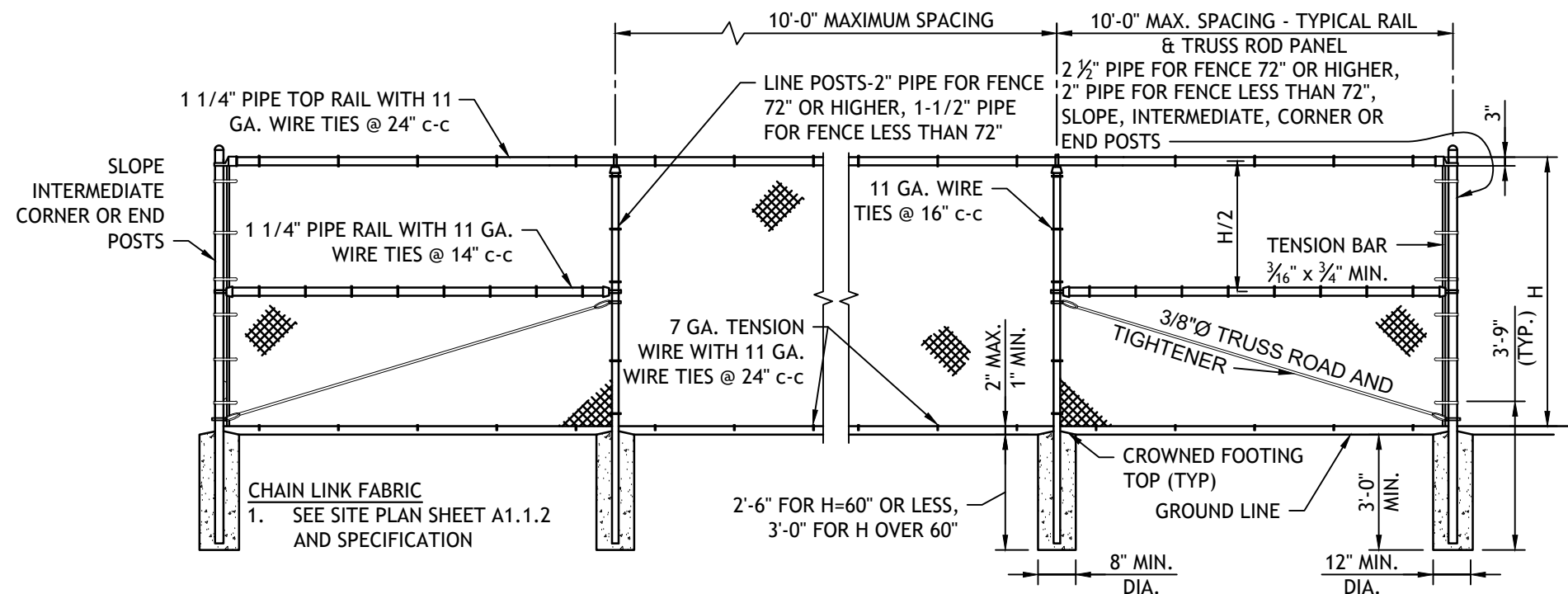
N.T.S.



SINGLE CHAIN LINK FENCE GATE

4

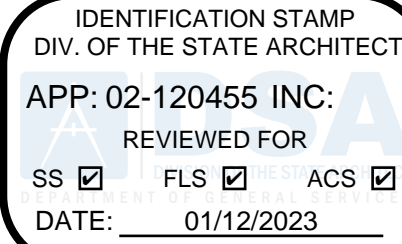
N.T.S.



TYPICAL CHAIN LINK FENCE

1

N.T.S.



730 Howe Avenue, Suite 450
Sacramento, CA 95825
Phone: 916.921.2112
Fax: 916.921.2212



MODERNIZATION LAKEWOOD
ELEMENTARY SCHOOL

TYPICAL SITE DETAILS

CONSULTANT

PROJECT NO.	REVISIONS	BY
21-32-052		
DATE		
3/28/2022		
DRAWN		
MS		
CHECKED		
JCBS		
SCALE		
AS SHOWN		
CADFILE		
UPDATED		
04/11/23		
SHEET NO.		

A1.3.2