

DEDICATION

of the

SUN PRAIRIE JUNIOR HIGH SCHOOL

OF

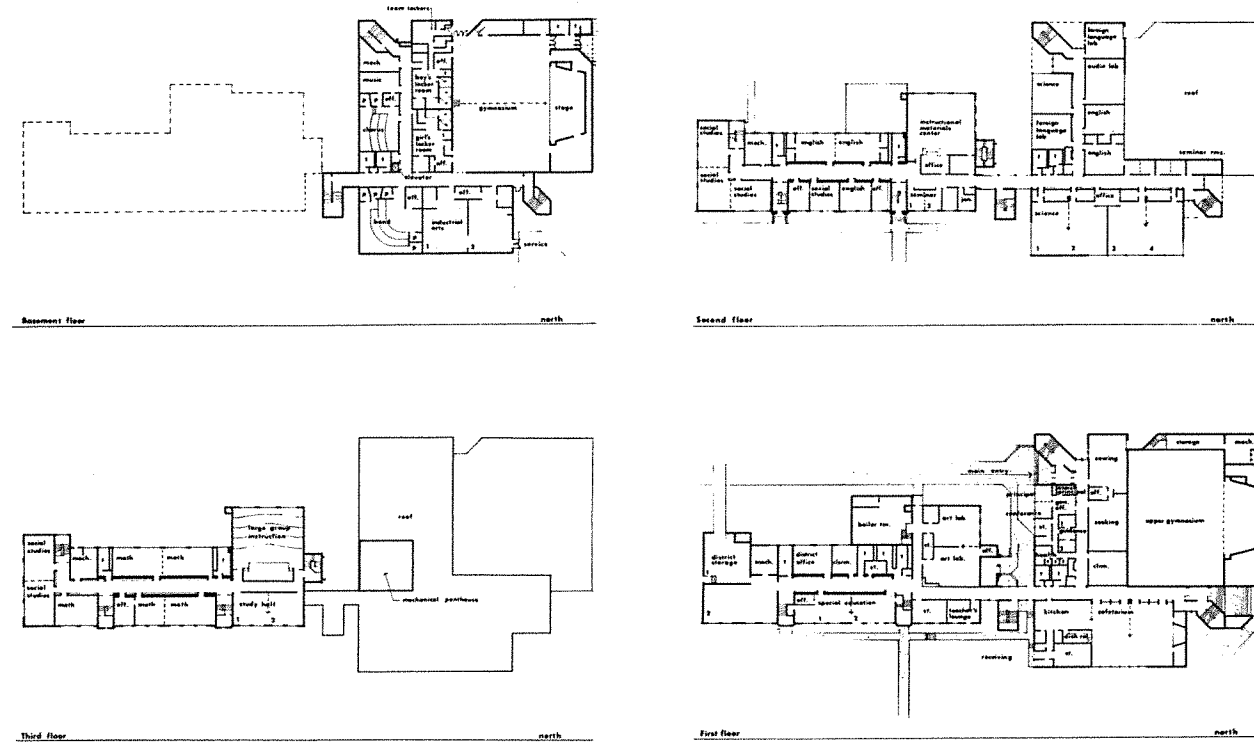
Joint School District Number Two, City of Sun Prairie,
Towns of Blooming Grove, Bristol, Burke,
Cottage Grove, Sun Prairie, and
York, Dane County, and
Town of Hampden,
Columbia Co.

Sun Prairie, Wisconsin
SUNDAY, MAY 16, 1971
2:00 P.M.

Open House Following Dedication



STRANG PARTNERS INC., — ARCHITECTS & ENGINEERS



SUN PRAIRIE JUNIOR HIGH SCHOOL

Description of Physical Plant

COST ANALYSIS

- 30 Academic Classrooms
- 2 Art and Storage room
- 2 Home Economics rooms
- 2 Industrial Arts Rooms
- 2 Special Education rooms
- 1 Resource Center Library Area
- 1 Band room with 5 practice-rooms
- 2 Study hall rooms
- 12 Staff offices
- Administration offices
 - 1 Principal office
 - 1 Main office
 - 1 Conference room
 - 1 Assistant Principal office
- 3 Guidance offices
- 2 Special Service offices
- 1 Nurse office
- 1 District Business office
- 1 Kitchen with storage
- 1 Cafeteria with stage
- 1 Gym with boys and girls locker and shower area and storage area
- 1 Stage area with storage room
- 1 Teacher lounge
- 27 Seminar, project, and small storage rooms
- 1 District Storage area
- 1 District garage
- 2 Blacktopped parking areas
- 1 Boiler room with storage
- 24 Student and faculty toilet rooms

Capacity	900 students
Area of building	121,490 Sq. feet
	66,090 new building
	50,400 existing building
Volume of building	1,065,910 cu. feet
Space per student	122 sq. feet
Cost of construction	\$1,978,552
Cost per student	\$2,200
Average square foot cost	\$16.36 (new building and remodeled portion)
Cubic foot cost	\$1.34 (new building only)

CONTRACTORS

General Contractors: Blaser & Kammer	\$1,303,900
Plumbing: J.F. Ahern, Fond du Lac	127,100
Heating: Rollie Johnson Plumbing and Heating Corp. Madison	344,419
Electrical: Electric Wiring Service, Oconomowoc	212,233
Structural Engineer: Gilbert S. Feldman, Inc. Milwaukee	
Electrical Engineer: Elwood Anderson Associates, Inc. Verona	
Landscape Architect: Dega & Stulka Associates, Madison	
TOTAL BUILDING COST	\$1,987,652

DEDICATION PROGRAM

SUN PRAIRIE JUNIOR HIGH SCHOOL - SUNDAY, MAY 16, 1971

1:30 - 2:00 p.m. - Junior High Band

Selected Numbers

J. F. Komoroske, Director

2:00 p.m. - Presentation of Colors, Pledge of Allegiance **Boy Scout Troop No. 47**

Invocation

Reverend Ben Cheesman

St. Chad's Episcopal Church

Presentation of Platform Guests

O.G. Berge, Superintendent

Board of Education: Willard Borchert, President; H. Paul Bergmann, Vice President;
Garfield Stock, Clerk; Gregory Blaska, Treasurer; Duane Barrington;
John Drunasky; Earl Wiehl

School Administrators: Curtis Sheehan, Gerald Hopfensperger, Dennis Ferriter,
Bernard Dunn, Lawrence Danielson, Martin French, Phillip Wilms,
John Ney

Mayor, City of Sun Prairie: Theodore Chase

Town Chairmen: Vernon C. Manley, Sun Prairie; Earl Larson, Burke; James G. Burnson,
Bristol; Denton Georgeson, Blooming Grove; Eugene Skaar, Cottage Grove;
Eugene Hein, York; Willis Trapp, Hampden

Architect: Strang Partners Inc.

General Contractor: Blaser and Kammer, Inc.

Presentation of Building to Administration and Faculty

Willard Borchert

President, Board of Education

Acceptance of Building - Acknowledgement of Gifts

Dennis Ferriter

Principal, Sun Prairie Junior High School

Junior High School Chorus

Mrs. Beverly Scrivner

Director

Dedication Address

Marvin Klein

Department of Public Instruction

Benediction

Reverend Ben Cheesman

Retire Colors

Boy Scout Troop No. 47

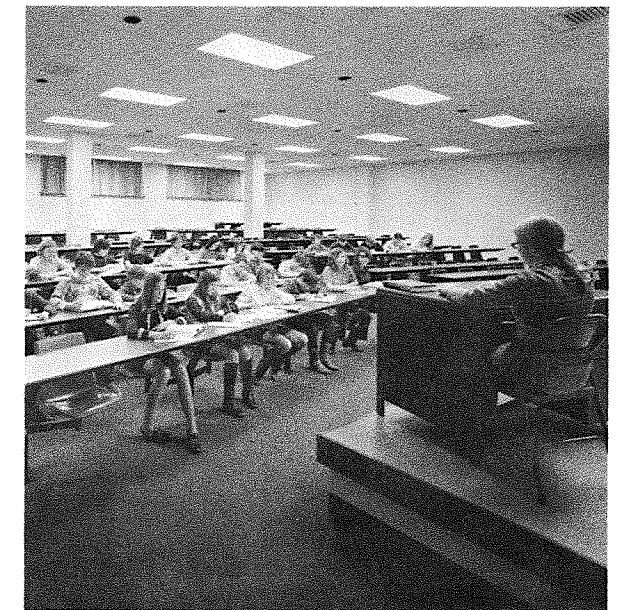
BOARD OF EDUCATION

Willard Borchert, President
H. Paul Bergmann, Vice President
Garfield Stock, Clerk
Gregory Blaska, Treasurer
Duane Barrington
John Drunasky
Earl Wiehl

ADMINISTRATION

O.G. Berge, Superintendent
Curtis Sheehan, High School Principal
Gerald Hopfensperger, High School Assistant
Principal
Dennis Ferriter, Junior High School Principal
Bernard Dunn, Elementary Coordinator
Westside School Principal
Lawrence Danielson, Northside School Principal
Martin French, Charles W. Bird Principal
Phillip Wilms, Southside School Principal
Eastside School Principal
John Ney, Business Manager

REFRESHMENTS SERVED IN CAFETERIA DURING OPEN HOUSE
Junior High Student Council will assist in the "Open House"



DESCRIPTION OF SUN PRAIRIE JUNIOR HIGH SCHOOL

A building program seems to be a yearly project in Sun Prairie. This new addition and remodeled portion of the older building is but another step in the school board's effort to accommodate the children of this fast growing community.

Use an existing old school, renovate it, and add a new facility to house the special functions such as science labs, gymnasium, home economics, music, and industrial arts. The concept of this design had to be consistent with the continuing development of the campus of which the old junior high was a part. The siting of the addition was an important consideration because of the intricate student and vehicular traffic patterns that had been established in and around the campus. The other important design criteria related to this building was the visual relationship of new versus old building.

The existing facility was built in 1927 with an addition in 1938. It contains approximately 50,000 square feet of space. While the building was found to be structurally sound, the heating, ventilating, plumbing, and electrical facilities were not up to current standards. Therefore, a new heating and ventilating system was installed, the building has been totally rewired, and new plumbing fixtures were installed. The existing wood floors were covered with new carpeting and heavy padding. New acoustic tile ceilings have been installed along with all new lighting fixtures. The plaster walls were patched where required. New chalk and tack boards replaced the older ones. On the exterior of the building all windows were replaced and the brickwork tuckpointed. In several locations existing walls have been removed and replaced with folding partitions to furnish greater flexibility. The existing gymnasium has been broken down into two art labs and a teachers' lounge. The upper part of the gymnasium has been spanned with a new structure adding more floor area to the building. This added area has provided space for an Instruc-

tional Materials Center. The remainder of the older building has been assigned to classroom use.

The new construction houses all of the special lab-type facilities and administrative offices. On the lowest level, the "noisy" activities have been located and isolated from the rest of the building. They include physical education, band and chorus rooms, and two industrial arts rooms. The gymnasium has immediate access to the athletic fields, can be divided into two small teaching stations and has a large stage which can double as a third physical education station.

The main level consists of the administrative offices, two home economics labs, a kitchen and a cafeteria seating 350 students. There are three grade entrances to this level and on the lower level as well. The third level contains five science labs, an audio lab, two foreign language rooms, and two English classrooms. At the north end of the present building and within the area of new construction the grade drops about 20 feet toward Main Street. Because of this drop in grade, the lowest floor of the new building is 15 feet below the grade elevation at the basement of the existing facility. Thus the second and third levels of the new building are aligned with the first and second levels of the existing building.

The structure of the addition is steel frame with open web steel rods and floor joists, a concrete floor system and a built-up roof over thermal setting roof insulation. The exterior walls are concrete block and brick veneer with aluminum windows and a continuous fascia of porcelain panels. The interior has metal stud partitions with thin-coat plaster, acoustic tile ceilings, and vinyl tile floors. The inside face of the exterior walls are plaster over a rigid insulation system. The heating system for the buildings is a low-velocity terminal reheat with perimeter radiation. The new building with the exception of the shops and physical education facilities has been air-conditioned.

SUN PRAIRIE JUNIOR HIGH SCHOOL
DEDICATED THIS 16th DAY OF MAY, 1971

ITEMS PLACED IN THE CORNERSTONE BOX FOR POSTERITY

1. 1970 Junior High Faculty Handbook
2. Sun Prairie Junior High School Student Directory - 1970
3. Sun Prairie School District Staff Directory - 1970
4. Sun Prairie Junior High School Student Handbook - 1970
5. Sun Prairie Junior High School Course Description Booklet - 1971-72
6. Sun Prairie Junior High School Dedication Literature
7. Sun Prairie Star Countryman - April 21, 1971, May 12, 1971
8. Wisconsin State Journal - Sunday, May 2, 1971
9. Capital Times - Wednesday, May 12, 1971
10. Copy of 1970 Sun Prairie School District School Budget
11. Copies of junior high newspaper. September, 1970 through April, 1971
12. Badger Conference Junior High Interscholastic Policies Booklet
13. Sun Prairie and Madison Area Telephone Directory - December, 1970
14. Sun Prairie Public Schools Description Booklet - 1970-71
15. 1970 Coins (U.S.), \$1.00 bill
16. 1970 U.S. Stamps
17. Sun Prairie Chamber of Commerce City Description Booklet.

