



Facility Advisory Committee

Meeting #2
April 11, 2023



Review and Chair/Co-chair Selection



- **Review Submitted Questions**
- **Chair/Co-Chair Selection**



Infrastructure Replacements



Existing facility and building components with defined life cycles. Failure of these systems have the potential to have severe impacts on campus operations

- **Building Envelope**

Roof Replacement, Building Sealants, Flashings, Gutters/Downspouts, etc.

- **Civil**

Parking Lots, Driveways, Sidewalks, Paving, Grading, Drainage, etc.

- **Electrical**

Main Switchgear, Panels, Generators, Motor Control Centers, Lighting, Marquees, etc.

- **Food Service**

Ovens, Steamers, Mixers, Coolers, Freezers, Warmers, Dish Machines, etc.

- **Life Safety & Security**

Fire Alarm/Sprinkler Systems, Intercoms, Surveillance Cameras, Traffic Driveways, etc.

- **Mechanical**

Chillers, Cooling Towers, Air Handlers, Heat Pumps, Roof-top Units, Exhaust Fans, etc.

- **Plumbing**

Boilers, Domestic Water, Sanitary Sewer, Water Heaters, Drinking Fountains, Fixtures, etc.

- **Technology – Building Systems**

Clocks, Intercom Systems, Sound Systems – Gym/Cafeterias/Common Areas

Assessment Priority Review



Life Cycle	
L1	Replacement needed within 2 years
L2	Replacement needed within 5 years
L3	Replacement needed within 10 years
L4	Replacement needed over 10 years

Programmatic	
P1	Critical need - Significant risk of existing program disruption
P2	Negative effect on existing programs, but can still meet existing program goals
P3	Expansion/upgrade of current programs or systems
P4	Nice to have if funding is available

Condition/Code	
C1	Condition/Code non-compliance has severe impact on campus
C2	Condition/Code non-compliance has significant negative affect on campus operations
C3	Condition/Code non-compliance warrants consideration, but not disruptive
C4	Condition/Code non-compliance for future consideration

Safety and Security	
S1	Critical need - Significant risk of failure of existing systems
S2	Negative effect on existing safety/security program, but can still meet existing goals
S3	Expansion/upgrade of current programs or systems
S4	Nice to have if funding is available

Technology Infrastructure	
T1	Critical need - Significant risk of failure of existing systems
T2	Negative effect on existing technology programs/systems, but can still meet existing instructional/operational goals
T3	Expansion/upgrade of current technology programs or systems
T4	Nice to have if funding is available

Building System – Sample Life Cycles



<u>Description</u>	<u>Useful Life</u>
Roof	25 Yrs
Chillers / Cooling Towers / Pumps	18 Yrs
Boilers / Pumps	18 Yrs
Air Handling Units	25 Yrs
EMS Controls	20 Yrs
Exhaust Fans	15 Yrs
Switchboards	30 Yrs
Lighting & Controls	20 Yrs
Generator	18 Yrs
Domestic Water Heaters / Boilers	18 Yrs
Drinking Fountains	15 Yrs
Sprinkler Heads	10 Yrs
Smoke Detectors	10 Yrs
Intercom	15 Yrs
Access Control / Intrusion Detection / Surveillance Cameras	15 Yrs





Facility Advisory Committee

Facility Assessment Needs



Building Envelope



Roof Replacement, Building Sealants, Flashings, Gutters/Downspouts, etc.

High Schools

Clear Creek High School	\$ 539,000
Clear Lake High School	1,547,900
Other High Schools	140,000
Total High Schools	\$ 2,226,900

Intermediate Schools

Clear Lake Intermediate	\$ 3,826,000
Victory Lakes Intermediate	4,061,961
Other Intermediate Schools	401,600
Total Intermediate Schools	\$ 8,289,561

Elementary Schools

Brookwood Elementary	\$ 1,528,280
Clear Lake City Elementary	1,999,562
Ferguson Elementary	757,850
Hyde Elementary	2,633,682
Wedgewood Elementary	1,838,100
Other Elementary Schools	1,087,250
Total Elementary Schools	\$ 9,844,724

Support Facilities

Technology Learning Center	\$ 746,160
Other Support Facilities	5,000
Total Support Facilities	\$ 751,160

Total Building Envelope

\$ 21,112,345

Note: All amounts In 2022 Dollars

Civil



Parking Lots, Driveways, Sidewalks, Paving, Grading, Drainage, etc.

High Schools

Clear Brook High School	\$	38,300
Other High Schools		2,400
Total High Schools	\$	40,700

Intermediate Schools

Brookside Intermediate	\$	68,000
Clear Creek Intermediate		35,000
League City Intermediate		35,000
Space Center Intermediate		42,500
Victory Lakes Intermediate		51,000
Other Intermediate Schools		81,000
Total Intermdediate Schools	\$	312,500

Elementary Schools

Armand Bayou Elementary	\$	273,700
Bay Elementary		172,500
Brookwood Elementary		120,000
Hyde Elementary		120,000
Robinson Elementary		240,000
Ward Elementary		120,000
Other Elementary Schools		256,750
Total Elementary Schools	\$	1,302,950

Support Facilities

Learner Support Center	\$	1,730,000
Other Support Facilities		315,000
Total Support Facilities	\$	2,045,000

Total Civil

\$ 3,701,150

Note: All amounts In 2022 Dollars

Electrical



Main Switchgear, Panels, Generators, Motor Control Centers, Lighting, Marquees, etc.

High Schools

Clear Brook High School	\$ 450,000
Clear Falls High School	450,000
Clear Lake High School	487,500
Clear Path Alternative High School	242,813
Clear Springs High School	1,473,045
Total High Schools	\$ 3,103,358

Intermediate Schools

Brookside Intermediate	\$ 812,500
Clear Creek Intermediate	2,718,202
Clear Lake Intermediate	1,122,500
League City Intermediate	870,000
Seabrook Intermediate	807,500
Victory Lakes Intermediate	250,000
Other Intermediate Schools	1,247,500
Total Intermediate Schools	\$ 7,828,202

Elementary Schools

Bauerschlag Elementary	\$ 170,938
Bay Elementary	190,938
Parr Elementary	320,000
Robinson Elementary	390,000
Other Elementary Schools	805,750
Total Elementary Schools	\$ 1,877,626

Support Facilities

Central Support Facility	\$ 2,194,138
East Agricultural Center	225,000
Technology Learning Center	255,000
Veterans Memorial Stadium	345,000
West Agricultural Center	225,000
Other Support Facilities	299,063
Total Support Facilities	\$ 3,543,200

Total Electrical

\$ 16,352,385

Note: All amounts In 2022 Dollars



Food Service



Ovens, Steamers, Mixers, Coolers, Freezers, Warmers, Dish Machines, , etc.

High Schools

Clear Brook High School	\$	312,104
Clear Creek High School		22,218
Total High Schools	\$	334,322

Intermediate Schools

Clear Creek Intermediate	\$	322,396
Clear Lake Intermediate		311,799
Creekside Intermediate		90,000
Total Intermdiate Schools	\$	724,196

Elementary Schools

Bay Elementary	\$	142,552
Brookwood Elementary		185,157
Hyde Elementary		172,557
North Pointe Elementary		175,057
Ward Elementary		172,157
Wedgewood Elementary		172,157
Other Elementary Schools		217,400
Total Elementary Schools	\$	1,237,037

Support Facilities

Learner Suport Center	\$	39,657
Total Support Facilities	\$	39,657

Total Food Service

\$ 2,335,212

Note: All amounts In 2022 Dollars

Life Safety & Security



Fire Alarm/Sprinkler Systems, Intercoms, Surveillance Cameras, Traffic Driveways, etc.

High Schools

Clear Brook High School	\$ 1,615,425
Clear Creek High School	1,603,010
Clear Lake High School	965,500
Clear Springs High School	959,936
Other High Schools	1,198,443
Total High Schools	\$ 6,342,314

Intermediate Schools

Bayside Intermediate	\$ 1,789,255
Clear Creek Intermediate	539,628
Seabrook Intermediate	1,064,551
Victory Lakes Intermediate	264,911
Westbrook Intermediate	200,000
Other Intermediate Schools	598,210
Total Intermediate Schools	\$ 4,456,554

Elementary Schools

Armand Bayou Elementary	\$ 661,941
Bay Elementary	912,950
McWhirter Elementary	590,500
Other Elementary Schools	2,864,388
Total Elementary Schools	\$ 5,029,779

Support Facilities

Chanllenger Columbia Stadium	\$ 2,677,000
Other Support Facilities	283,000
Total Support Facilities	\$ 2,960,000

Total Life Safety & Security

\$ 18,788,647

Note: All amounts In 2022 Dollars

Mechanical



Chillers, Cooling Towers, Air Handlers, Heat Pumps, Roof-top Units, Exhaust Fans, etc.

High Schools

Clear Brook High School	\$ 5,028,000
Clear Creek High School	2,725,750
Clear Falls High School	1,985,000
Clear Lake High School	2,270,000
Clear Springs High School	7,020,000
Total High Schools	\$ 19,028,750

Intermediate Schools

Clear Creek Intermediate	\$ 8,279,451
League City Intermediate	4,646,001
Seabrook Intermediate	6,245,672
Space Center Intermediate	5,913,325
Victory Lakes Intermediate	5,514,595
Other Intermediate Schools	4,546,997
Total Intermediate Schools	\$ 35,146,041

Elementary Schools

Bauerschlag Elementary	\$ 2,033,750
Clear Lake City Elementary	1,206,250
Falcon Pass Elementary	2,486,250
Gilmore Elementary	1,886,250
Goforth Elementary	1,990,000
Robinson Elementary	2,024,500
Weber Elementary	2,450,000
Other Elementary Schools	4,608,848
Total Elementary Schools	\$ 18,685,848

Support Facilities

Central Support Facility	\$ 1,141,082
Other Support Facilities	1,092,000
Total Support Facilities	\$ 2,233,082

Total Mechanical

\$ 75,093,721

Note: All amounts In 2022 Dollars

Plumbing



Boilers, Domestic Water, Sanitary Sewer, Water Heaters, Drinking Fountains, Fixtures, etc.

High Schools

Clear Brook High School	\$ 3,327,990
Other High Schools	325,000
Total High Schools	\$ 3,652,990

Intermediate Schools

Brookside Intermediate	\$ 431,000
Clear Creek Intermediate	1,799,008
League City Intermediate	222,250
Seabrook Intermediate	1,290,316
Space Center Intermediate	352,500
Victory Lakes Intermediate	337,250
Other Intermediate Schools	240,000
Total Intermediate Schools	\$ 4,672,324

Elementary Schools

Bauerschlag Elementary	\$ 82,250
Falcon Pass Elementary	92,750
Ferguson Elementary	305,490
McWhirter Elementary	100,000
Wedgewood Elementary	86,089
Other Elementary Schools	470,750
Total Elementary Schools	\$ 1,137,329

Support Facilities

Main Transportation	\$ 300,000
Veterans Memorial Stadium	123,750
Other Support Facilities	34,500
Total Support Facilities	\$ 458,250

Total Plumbing

\$ 9,920,893

Note: All amounts In 2022 Dollars

Technology – Building Systems



Clocks, Intercom Systems, Sound Systems – Gyms, Cafeterias, Common Areas

High Schools

Clear Brook High School	\$ 1,467,447
Clear Creek High School	1,593,404
Clear Falls High School	854,000
Clear Springs High School	790,000
Other High Schools	400,000
Total High Schools	\$ 5,104,851

Intermediate Schools

Clear Creek Intermediate	\$ 545,000
Clear Lake Intermediate	350,000
Seabrook Intermediate	779,461
Space Center Intermediate	330,000
Victory Lakes Intermediate	619,607
Other Intermediate Schools	1,322,344
Total Intermediate Schools	\$ 3,946,412

Elementary Schools

Bauerschlag Elementary	\$ 349,280
Brookwood Elementary	438,602
Falcon Pass Elementary	359,280
Goforth Elementary	359,280
Greene Elementary	312,592
Mossman Elementary	300,000
Robinson Elementary	330,480
Weber Elementary	435,408
Other Elementary Schools	2,375,004
Total Elementary Schools	\$ 5,259,925

Support Facilities

Central Support Facility	\$ 300,000
Other Support Facilities	590,000
Total Support Facilities	\$ 890,000

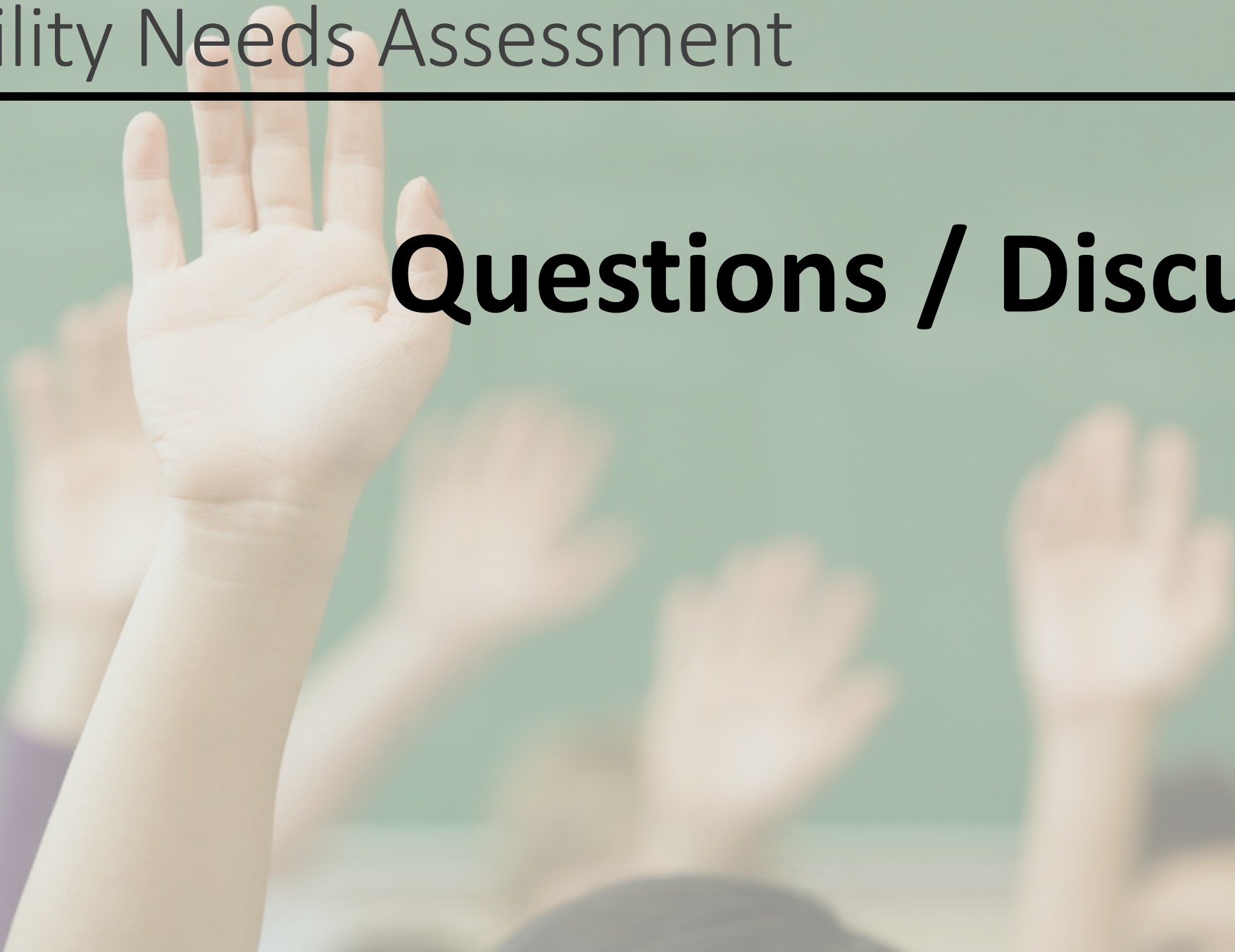
Total Technology - BLDG Systems \$ 15,201,188

Note: All amounts In 2022 Dollars

Facility Needs Assessment



Questions / Discussion?





Facility Advisory Committee

Tour of Campus