



Springfield 2022-2023

Superintendent's Report

November 28, 2022

#SPSCompassionate&Extraordinary

Springfield Public Schools Vision & Mission

Vision:

Cultivating compassionate and extraordinary learners!

Mission:

Springfield Public Schools will challenge every student through meaningful, engaging experiences — empowering all students to flourish and contribute in an evolving world.

Report Overview

- Data Presentation: New Jersey Graduation Proficiency Assessment & Advanced Placement Achievement, Asst. Supt. Erica Scudero
- Community Updates
- Calendar Updates

New Jersey Graduation Proficiency Assessment (NJGPA)

- “On Tuesday, July 5, 2022, Governor Murphy signed P.L.2022, c.60 (ACS for A-3196/S-2349), which requires the State Board of Education to administer the New Jersey Graduation Proficiency Assessment (NJGPA) as a field test for the class of 2023. This **law also prohibits the results of the NJGPA field test** (First Pathway), a substitute competency test (Second Pathway), or portfolio appeal (Third Pathway) **from being used as a prerequisite for graduation for students expected to graduate in the class of 2023.** There is no graduation assessment requirement for any student who is expected to graduate with the class of 2023. **The graduation assessment requirements for the classes of 2024 and 2025 remain in place and are available for districts on the Graduation Assessment Requirements webpage.”** <https://nj.mypearsonsupport.com/njgpa/>
- The district is required by the state to share the results from the assessment, but these are the results of a field test, and are not used to determine student graduation readiness.
- Parents have their individual student’s results via hard copy.

NJGPA- English Language Arts

	NOT YET GRADUATION READY		GRADUATION READY	
	#	%	#	%
NEW JERSEY	58,735	60.6	38,178	39.4
JDHS (156)	83	53	73	47
FEMALE (77)	34	44	43	56
MALE (79)	49	62	30	38
HISPANIC/LATINX (37)	26	70	11	30
ASIAN (15)	3	20	12	80
BLACK/AFRICAN- AMERICAN (25)	12	48	13	52
WHITE (75)	38	51	37	49
STUDENTS WITH DISABILITIES (27)	26	96	1	4
ELL STUDENTS (2)	*	*	*	*

* Data is Not Displayed In Order to Protect Student Privacy (N≤10)

NJGPA-Mathematics

	NOT YET GRADUATION READY		GRADUATION READY	
	#	%	#	%
NEW JERSEY	49,145	50.5	48,223	49.5
JDHS (156)	59	38	97	62
FEMALE (77)	24	31	53	69
MALE (79)	35	44	44	56
HISPANIC/LATINX (37)	16	43	21	57
ASIAN (15)	4	27	11	73
BLACK/AFRICAN-AMERICAN (25)	12	48	13	52
WHITE (75)	25	33	50	68
STUDENTS WITH DISABILITIES (27)	23	85	4	15
ELL STUDENTS (2)	*	*	*	*

* Data is Not Displayed In Order to Protect Student Privacy (N≤10)

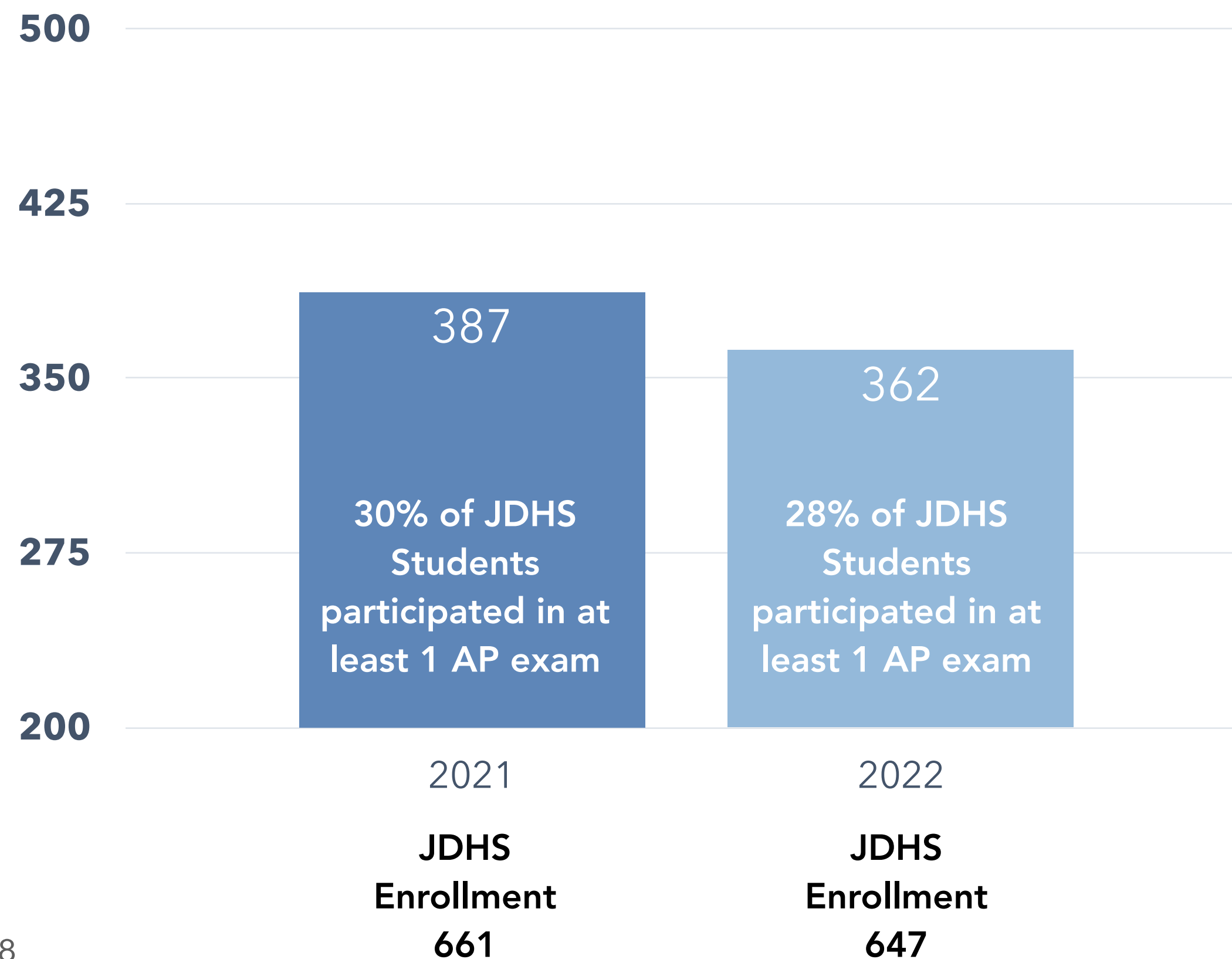
New Jersey Graduation Requirements Classes of 2024 & 2025

- First Pathway: Students must take and demonstrate proficiency in grade 11 on the New Jersey Graduation Proficiency Assessment, which includes content aligned to the grade 10 New Jersey Student Learning Standards (NJSLS) in ELA, and the NJSLS in Algebra 1 and Geometry. If after completing the New Jersey Graduation Proficiency Assessment a student does not demonstrate proficiency on the ELA or mathematics section, the student may retake the New Jersey Graduation Proficiency Assessment in the following summer or fall.
- Second Pathway: By meeting the designated cut score on a substitute competency test such as other high school-level NJSLA/PARCC assessments, the SAT, ACT, or ACCUPLACER; or
- Third Pathway: By submitting, through the district, a student portfolio appeal to the New Jersey Department of Education.

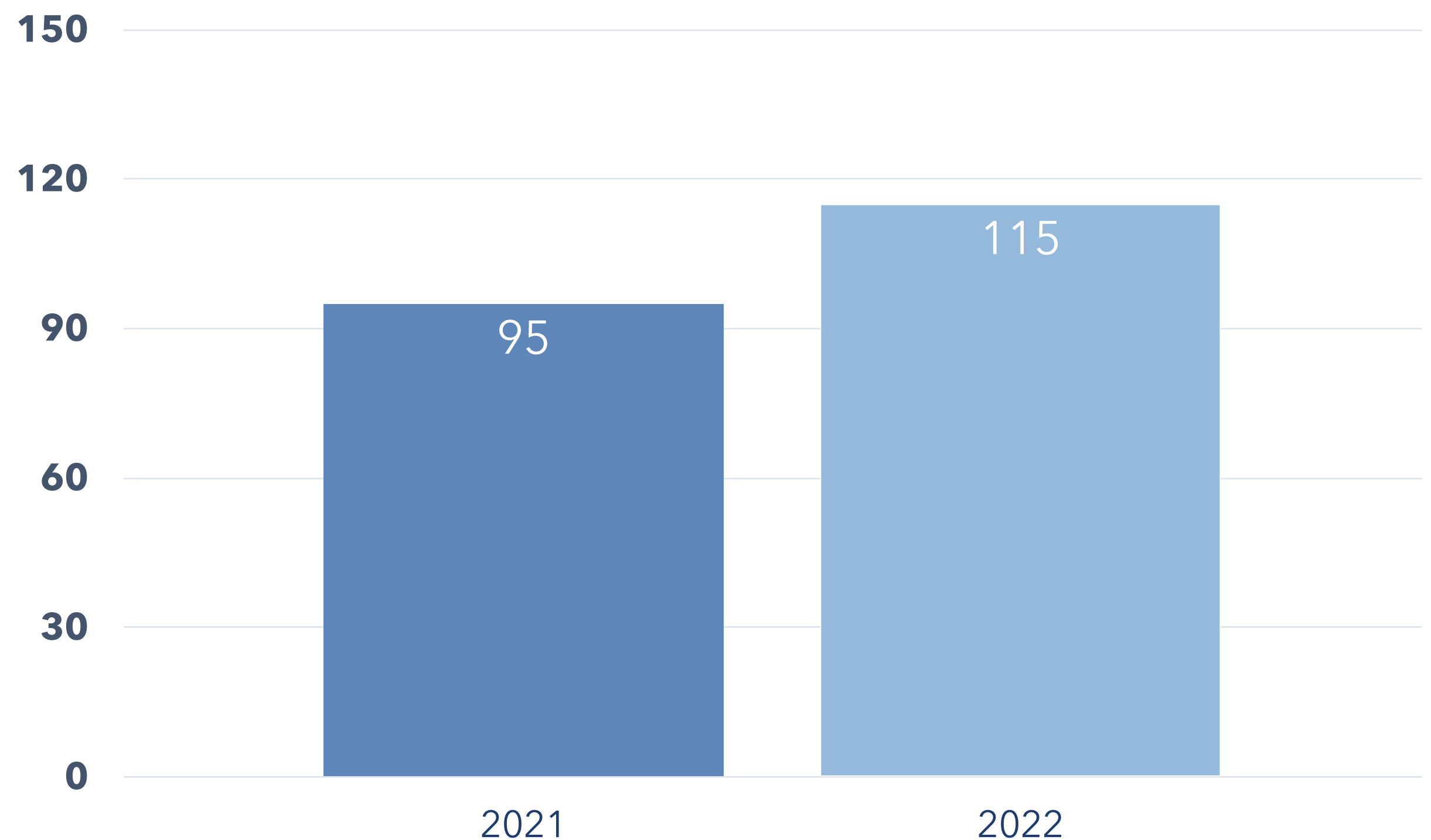
https://www.nj.gov/education/assessment/requirements/2023_2025.shtml

2022 Advanced Placement Exams

Total Exams & Participation

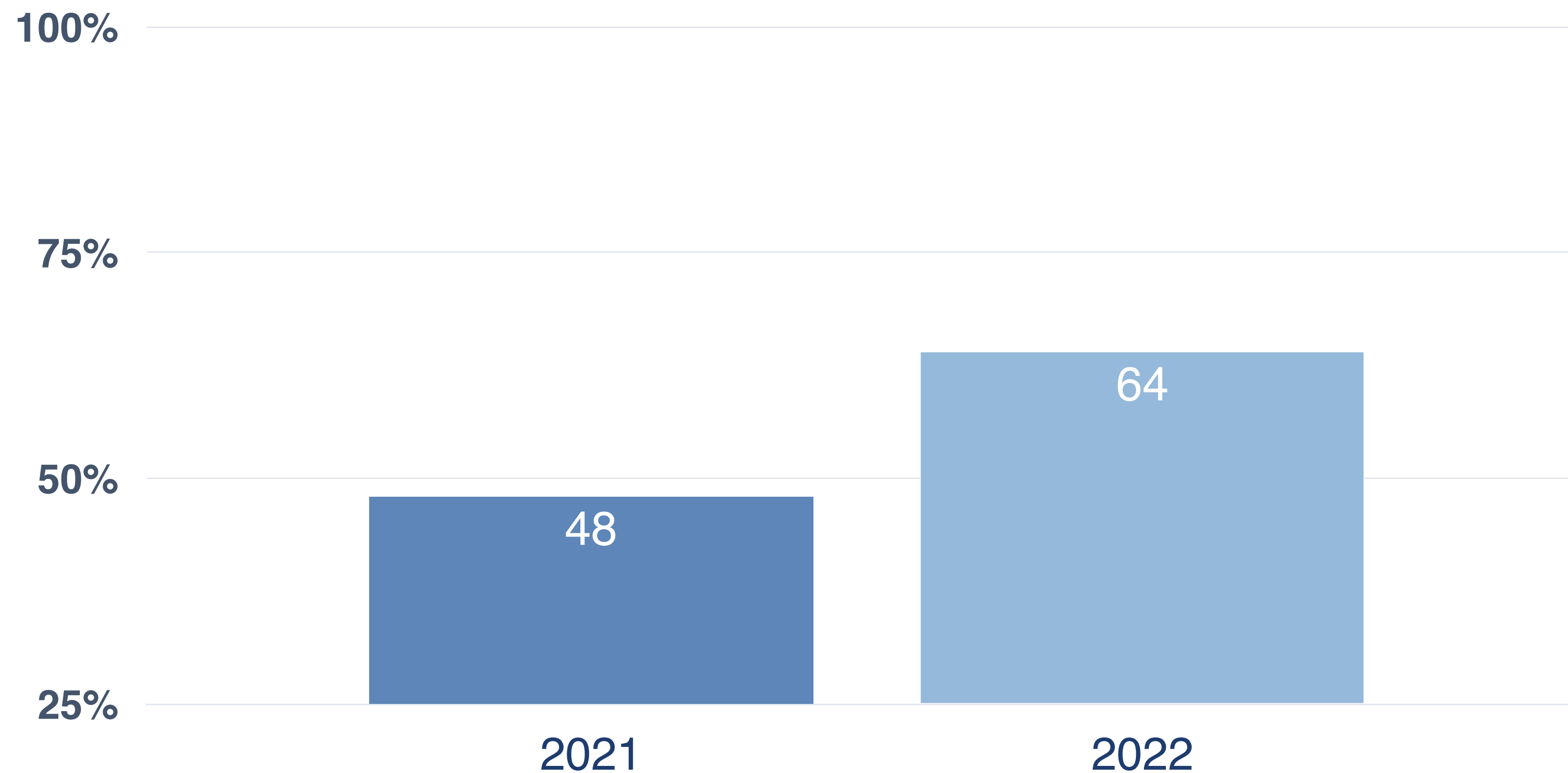


of Students with AP Total Exams of a 3 or Higher



2022 Advanced Placement Exams

AP Scholars



District Professional Development Day

- Highlights include:
 - Staff data dives into current student achievement data
 - Co-teaching in the high school
 - Introduction of new K-5 math curriculum pilot
 - “Building a Supportive School and District Climate” led by Connie Palmer, LCSW

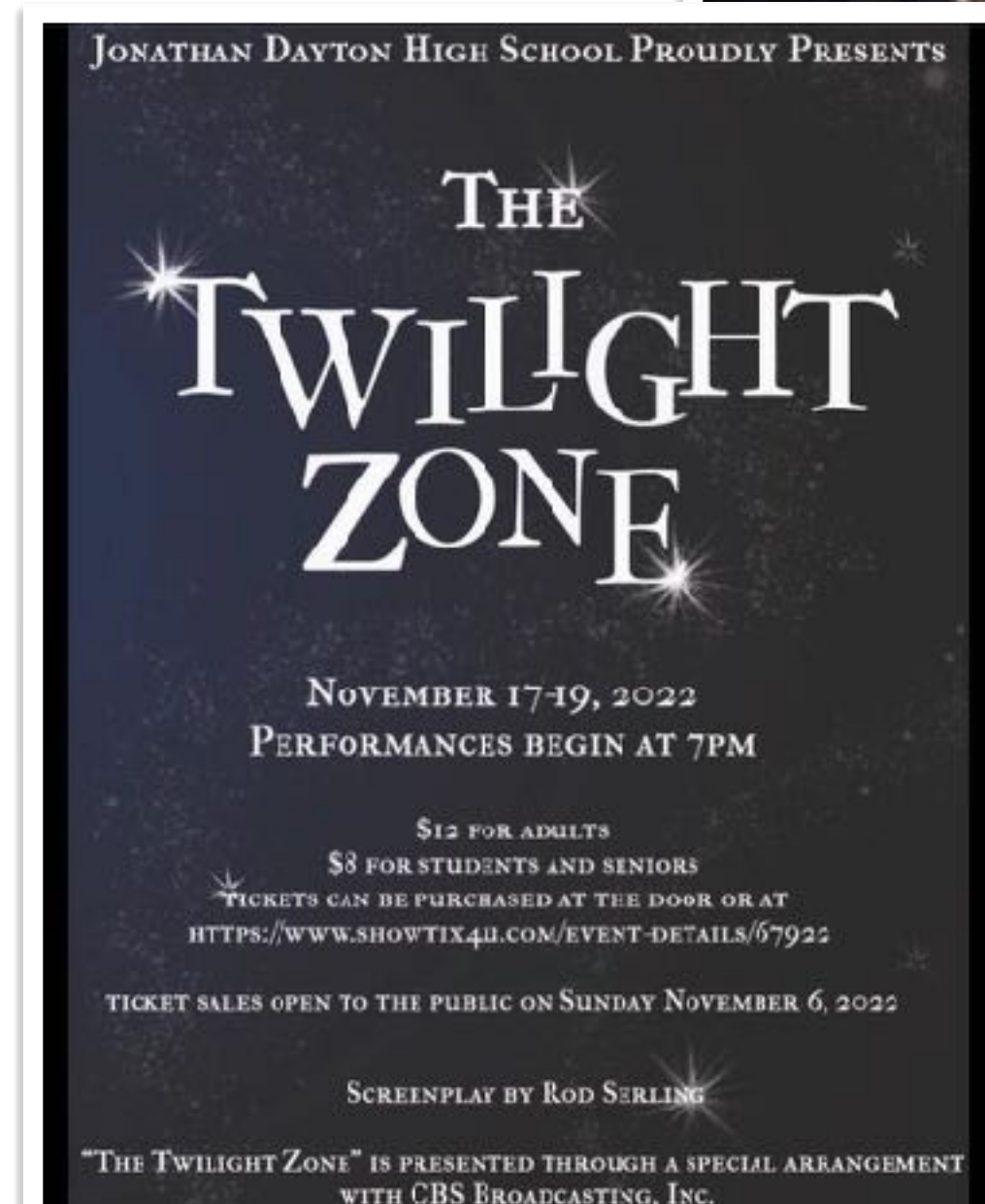


Special thanks to the PTAs for providing coffee and breakfast items!

#SPSCompassionate&Extraordinary

JDHS Fall Drama: Twilight Zone!

Congratulations to
Ms. Hernandez and
JDHS students on the
premiere!



#SPSCompassionate&Extraordinary

Varsity Athletic Updates

Congratulations to our Girls Varsity Volleyball Team!



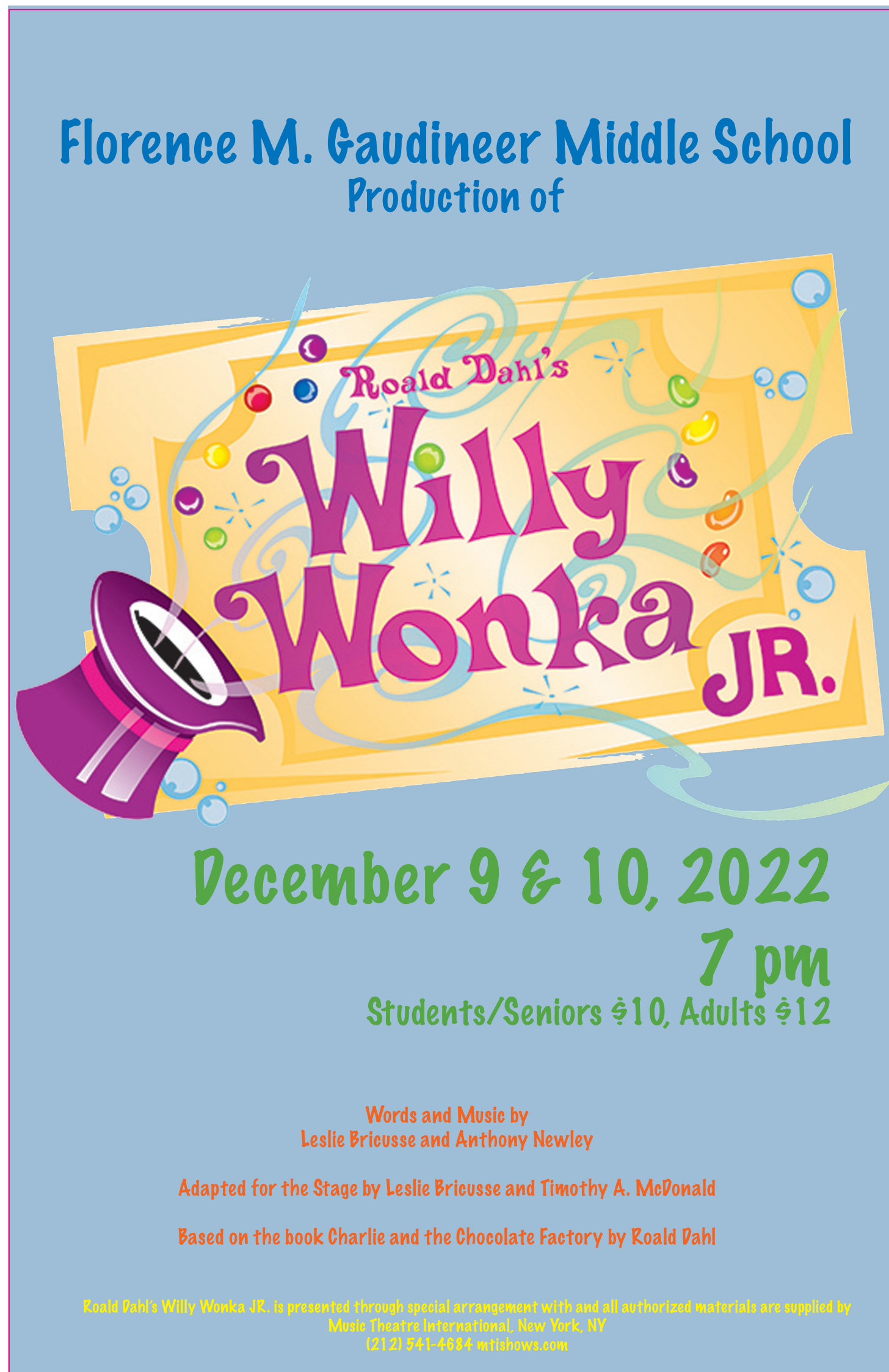
**3 Time Sectional
Champs!**



FMG Presents Willy Wonka Jr!

December 9th & 10th
7:00 PM
Halsey Auditorium

Ticket information coming soon!



#SPSCompassionate&Extraordinary

Parent Workshops

How To College
Author Andrea Brenner
JDHS Media Center
December 8th, 7 PM

Open to all members of the
Springfield Community!



Calendar Reminders

Friday, December 23, 2022:

Half-Day, Start of Winter Break

Schools Closed December 27, 2022-January 2, 2023

Winter Break