

Springfield 2021-2022

Superintendent's Report

February 7, 2022

#SPSCompassionate&Extraordinary

Our Vision & Mission

Vision:

Cultivating compassionate and extraordinary learners!

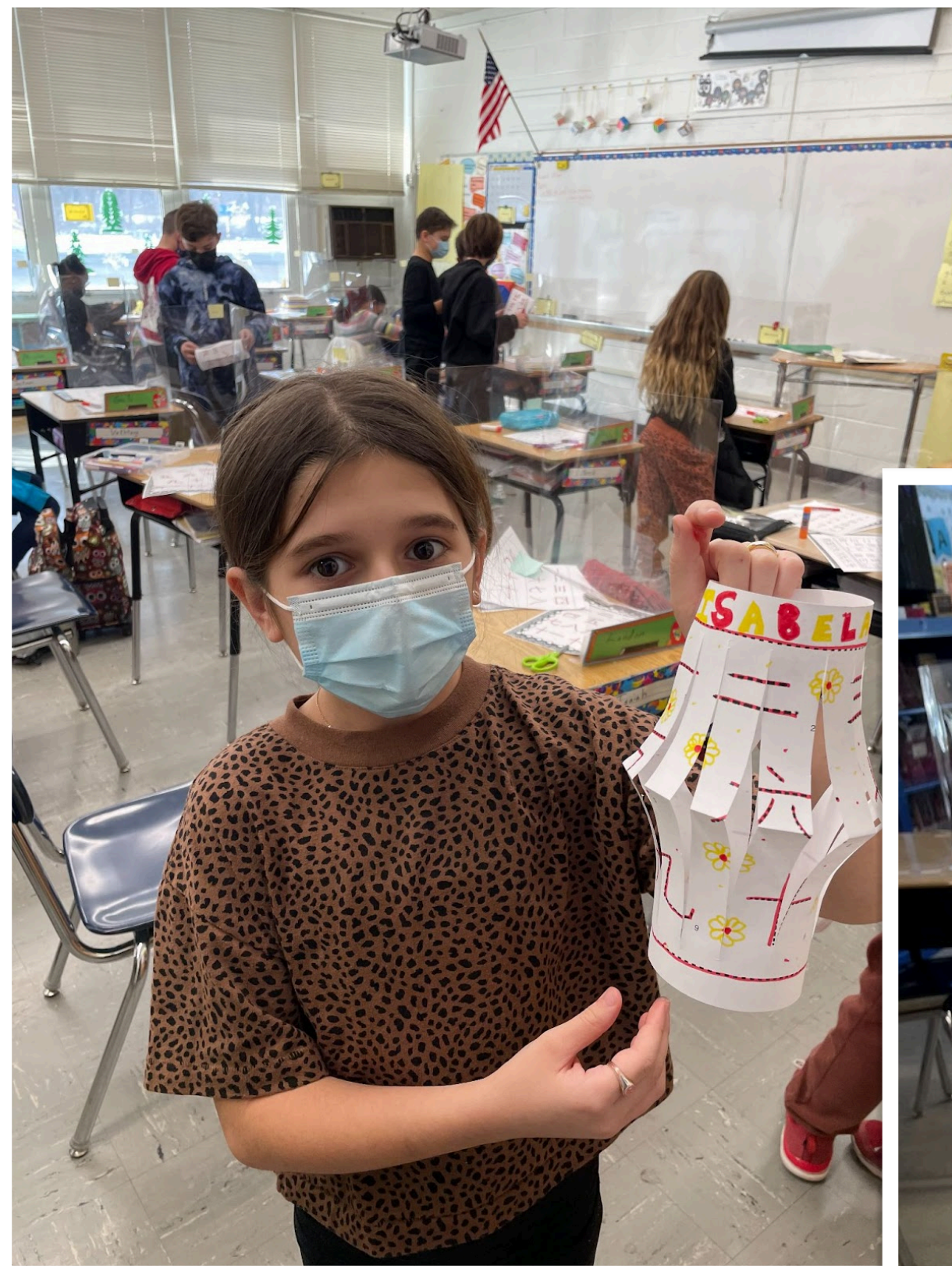
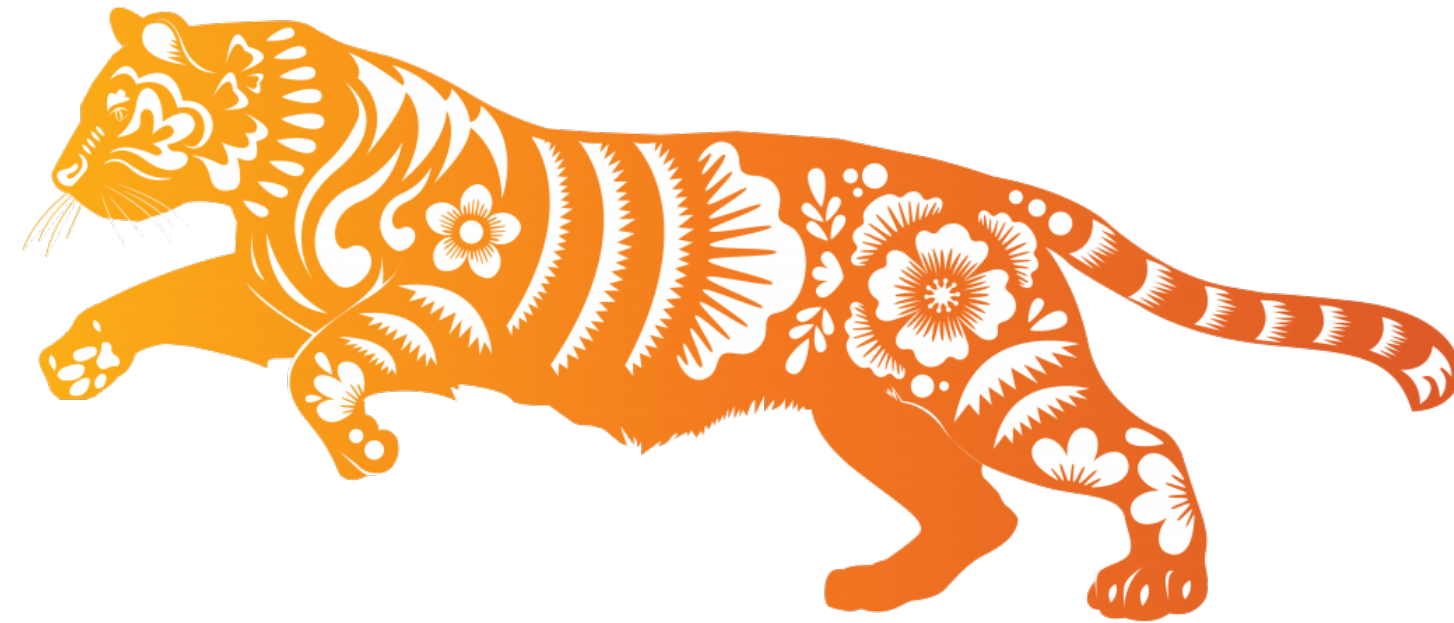
Mission:

Springfield Public Schools will challenge every student through meaningful, engaging experiences — empowering all students to flourish and contribute in an evolving world.

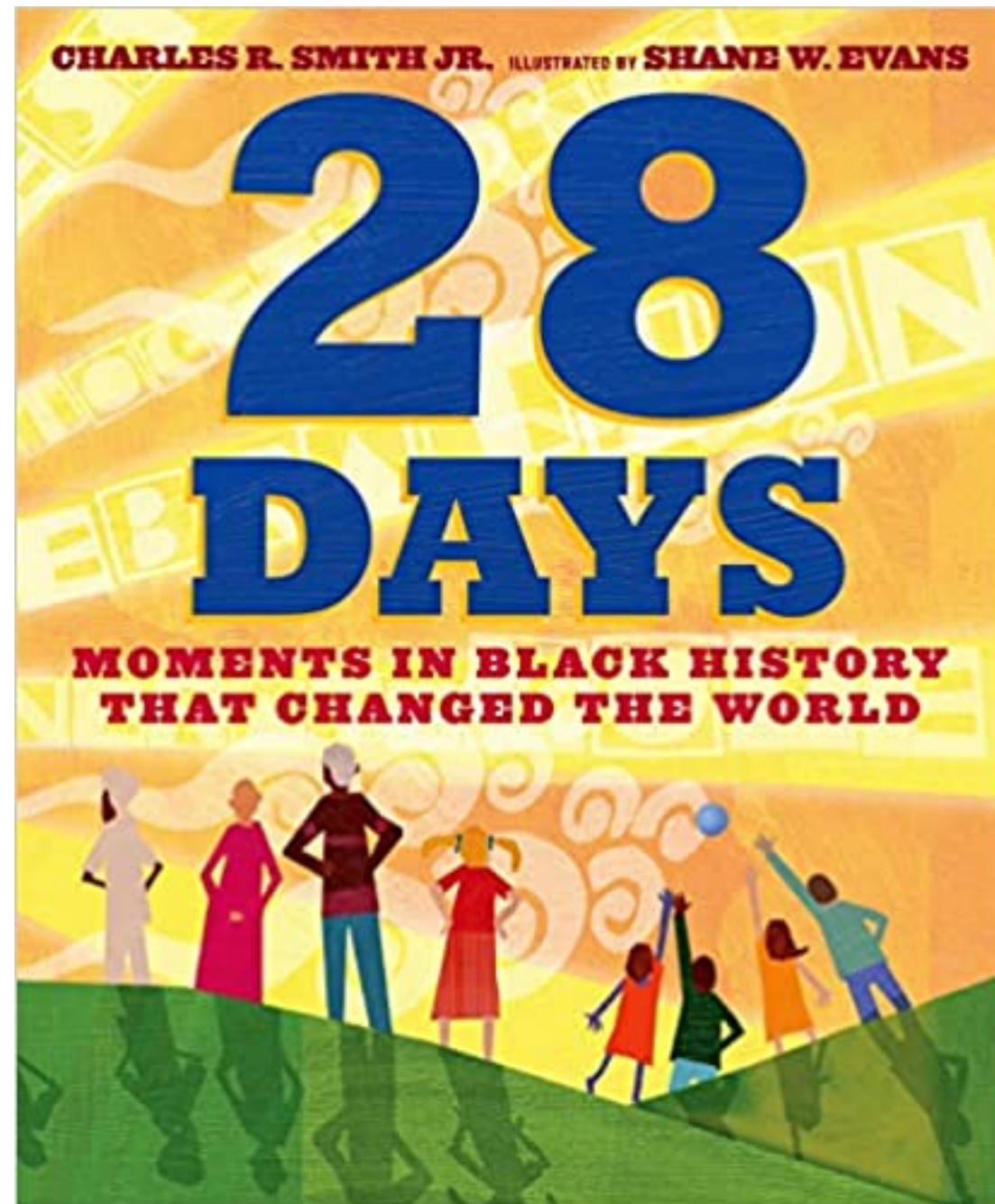
Report Overview

- Community & School Updates
- Student Safety Data System- 2021-2022 Period 1
- New Jersey Start Strong Assessment Report
- Covid-19 Protocols Review

Celebrating the Lunar New Year!



Celebrating Black History Month



At Sandmeier, every day during the month, 4th graders are learning about new moments and influential leaders who changed the world!

The JDHS Black Student Union is leading a variety of terrific evenings this month!

Other events include:

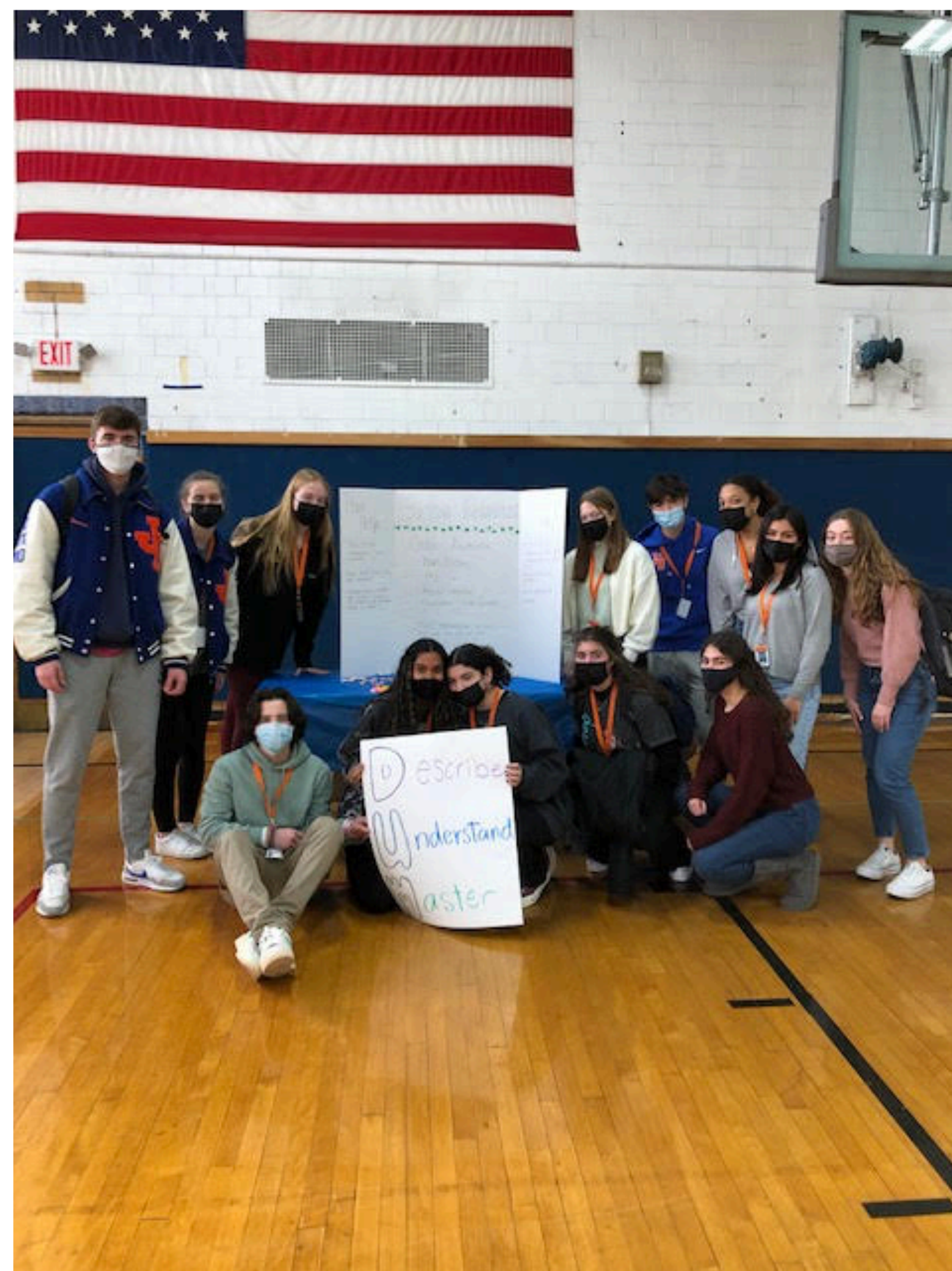
2/8/11: Black History Arts Trivia

2/25/22 Black History Arts Showcase



JDHS Highlights

On Thursday, January 20th, The peer leaders held a midterm prep activity for the 9th graders!



During activity period the freshmen were welcomed into the east gym by the upperclassmen leaders and organized into small groups. The groups were able to visit each leader at their table to learn tips and tricks for their first midterm experience.

National Girls and Women Sports Day Award!



NJSIAA has selected Gianna Sandull as Jonathan Dayton's 2022 recipient of the National Girls and Women in Sports Day award!

JDHS Athletics Highlights



Swimming: 4-4

Girls Basketball: 9-2

Boys Basketball: 5-8

Wrestling (Co-op): 3-9

Hockey (Co-op): 1-15-2

Celebrating the Arts!



JDHS & FMG Band & Chorus
students performed in-person
Winter Concerts!



Athletics Highlights

Swimming: 4-3

Girls Basketball: 4-1

Boys Basketball: 2-6

Wrestling (Co-op): 2-5

Hockey (Co-op): 1-7

New Jersey Department of Education Student Safety Data System (SSDS)

Reporting Period 1: September 1, 2021 - December 31, 2021

		INCIDENTS							
	Other Incidents Leading to Removal	Violence	Vandalism	Substances	Weapons	HIB Confirmed	HIB Alleged	HIB Trainings	HIB Programs
Edward V. Walton	0	0	0	0	0	0	2	4	13
James Caldwell	0	0	0	0	0	1	1	1	9
Thelma L. Sandmeier	0	0	0	0	0	0	3	9	10
Florence M. Gaudineer	0	2	0	0	0	1	1	4	9
Jonathan Dayton High School	9	0	0	0	1	2	2	8	13
February 7, 2022 Board of Education Meeting									

New Jersey Start Strong Assessment Presentation

Start Strong Assessment Overview

Start Strong Fall 2021 Administration (From the New Jersey Department of Education):

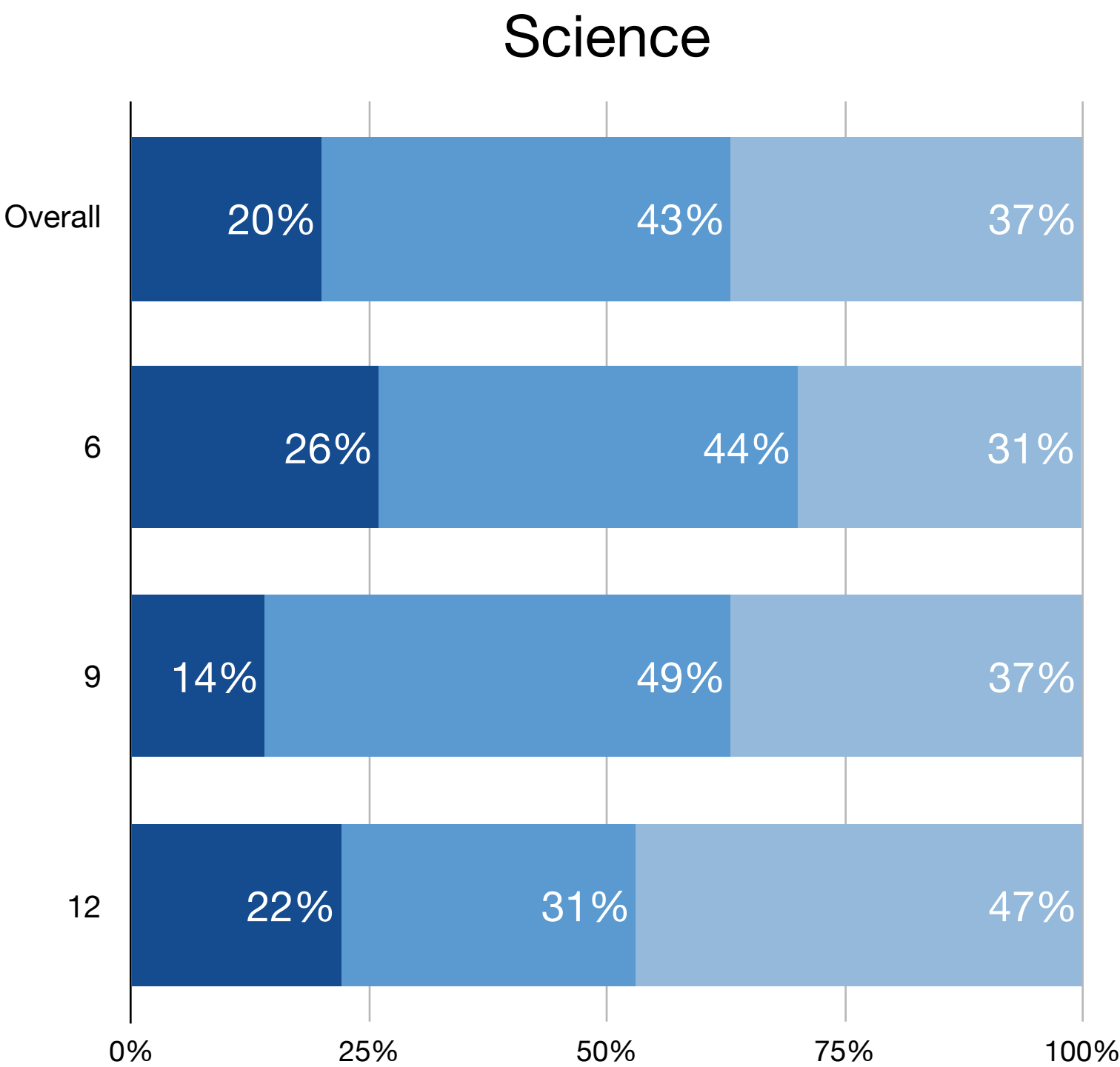
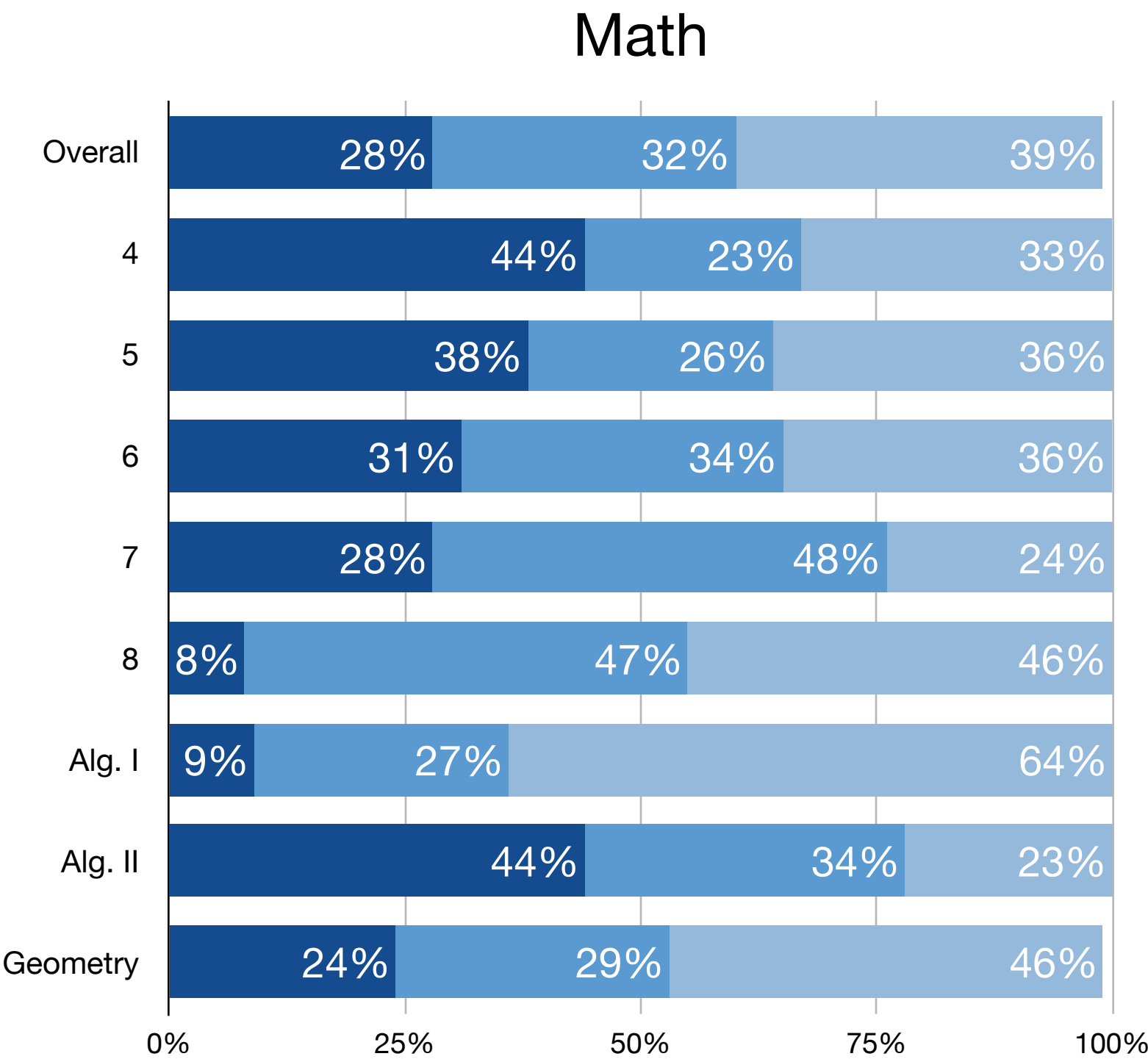
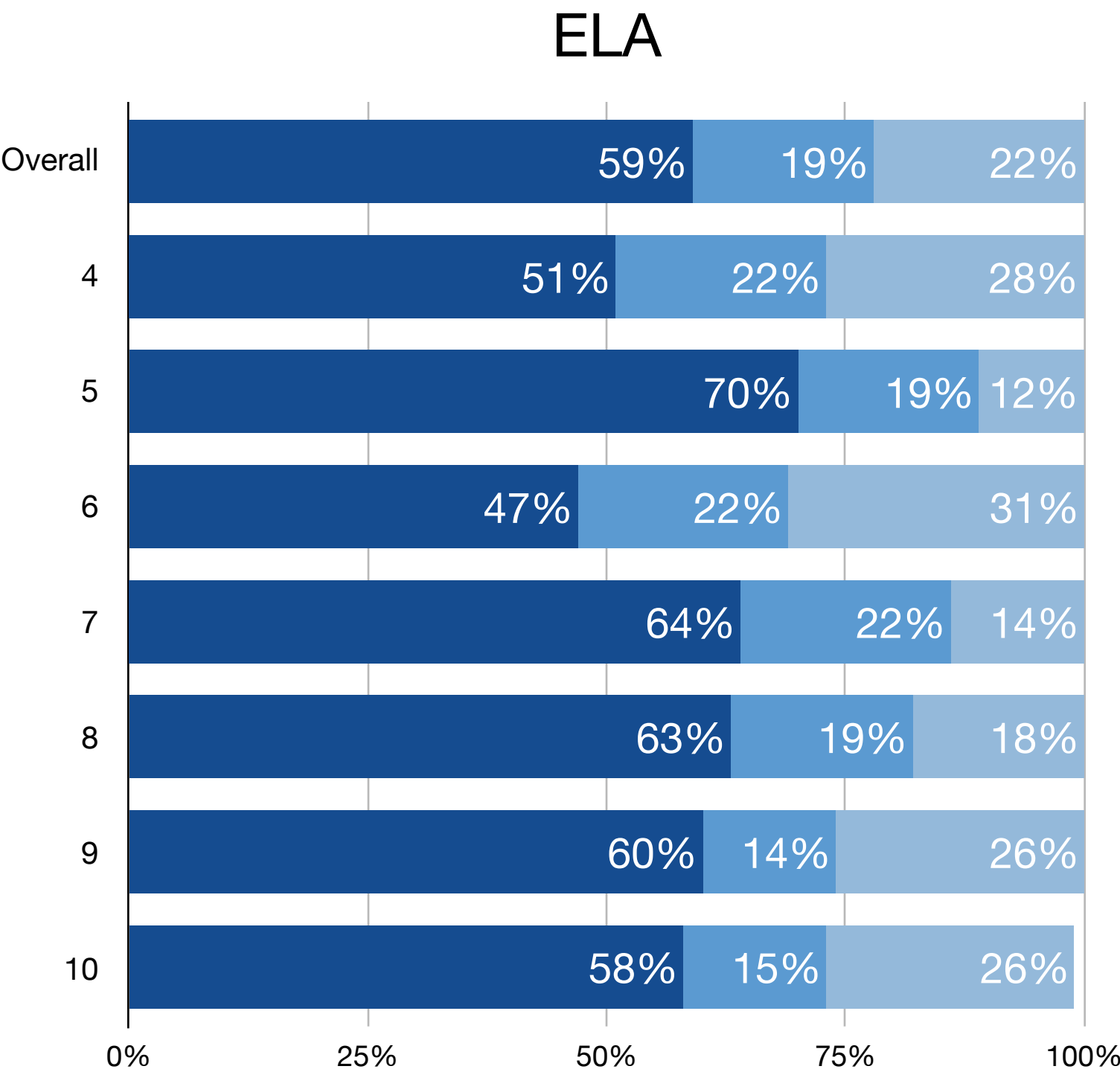
- Fulfilled the state requirement for the following areas of assessment:
 - English Language Arts in Grades 4-10
 - Mathematics in Grades 4-8, Algebra, Geometry, and Algebra II
 - Science in Grades 6, 9 and 12
- Results were returned quickly, and at the November Professional Development Day, SPS staff began to review the feedback
- As determined by the U.S. Department of Education, the administration of Start Strong satisfied federal statewide assessment requirements to administer general assessments in English language arts, mathematics, and science only for the 2020-2021 school year. TStart Strong provided a snapshot into the needs of our students utilizing three performance levels:
 - Less Support May Be Needed
 - Some Support May Be Needed
 - Strong Support May Be Needed

Start Strong Result Interpretation Considerations

Start Strong Fall 2021 Information (From the New Jersey Department of Education):

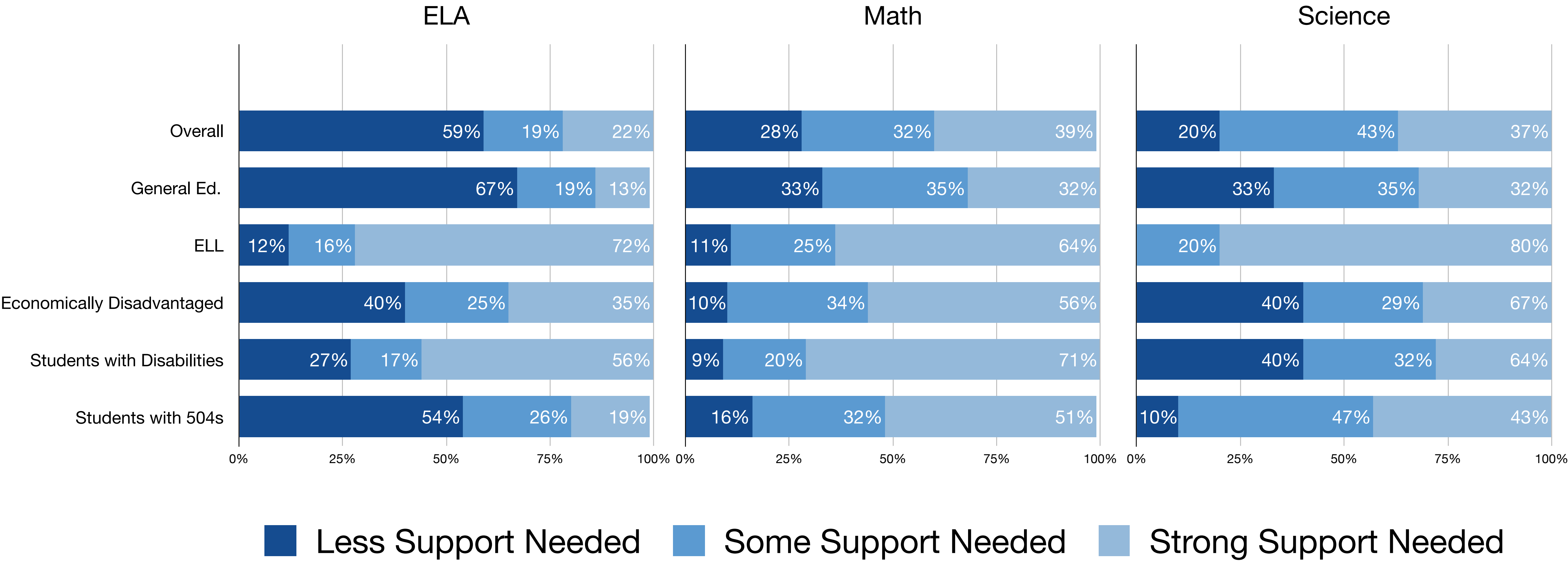
- When publicly reporting assessment results, consider the impacts of COVID-19 on learning and testing conditions, as well as the impact on student participation in the assessments, which were administered in person.
- Districts **should not** compare any individual student/school/district Start Strong data to any state-level data for Start Strong, nor should comparisons be made to any NJSLA data.
- Please note that the Start Strong assessments were **not** designed to predict future student performance on the NJSLA, nor was it designed to estimate what score a student would have received if they had taken the NJSLA in spring 2021.

Start Strong Student Performance By Grade Level

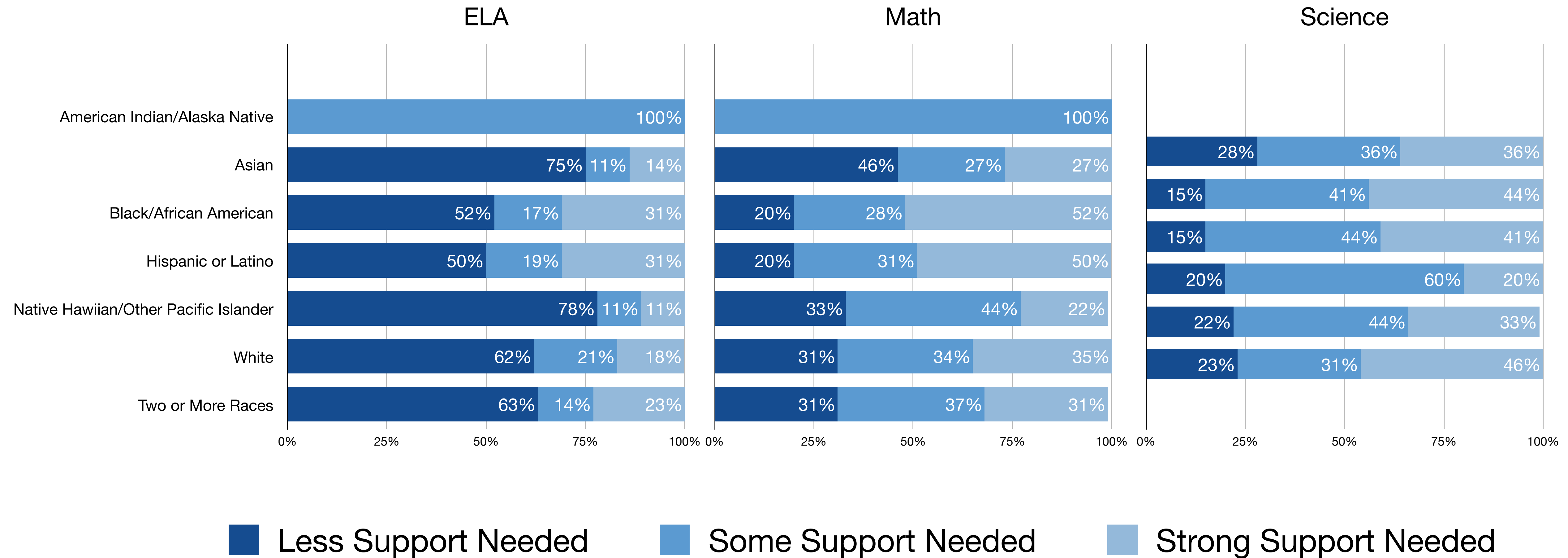


■ Less Support Needed ■ Some Support Needed ■ Strong Support Needed

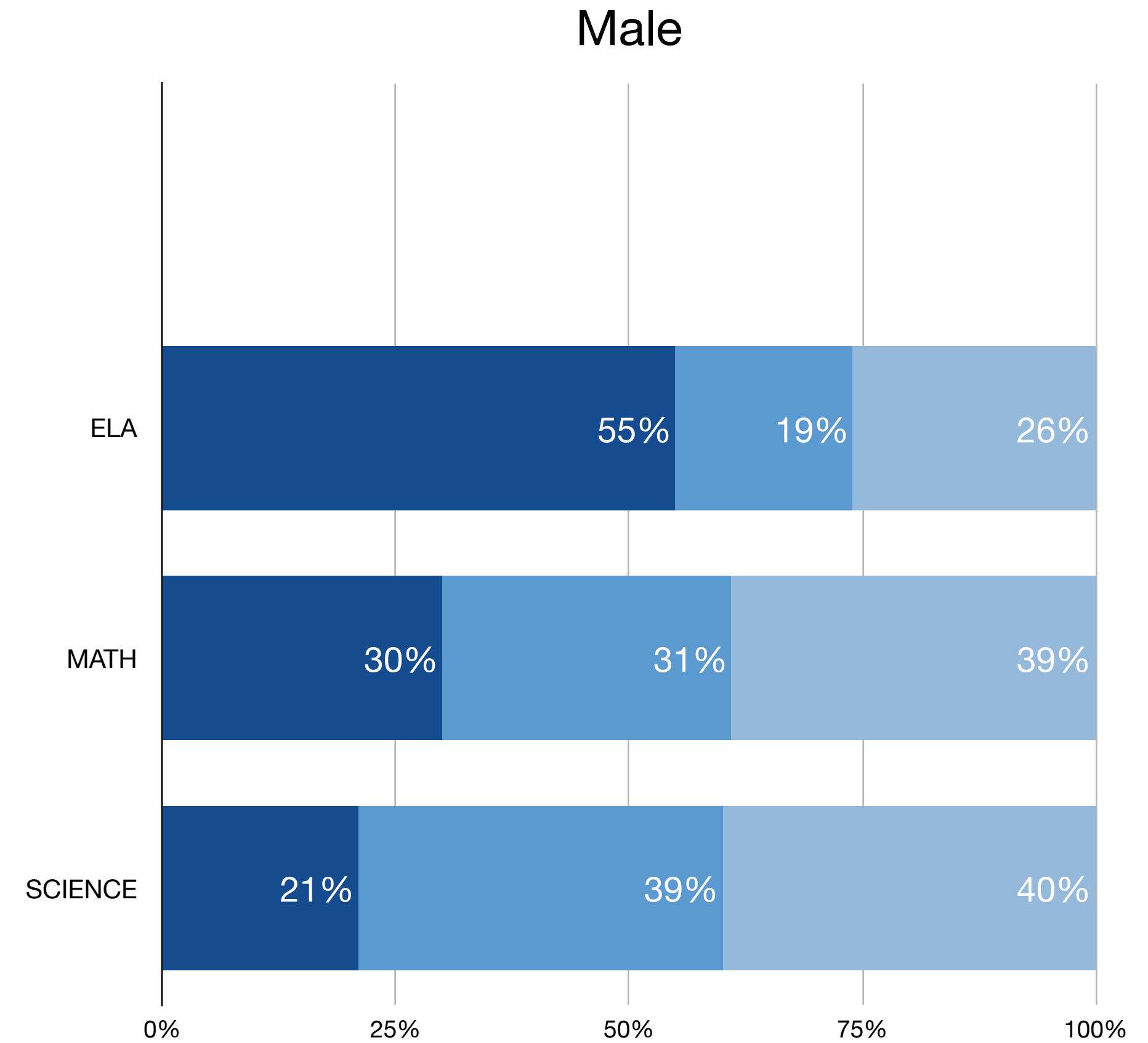
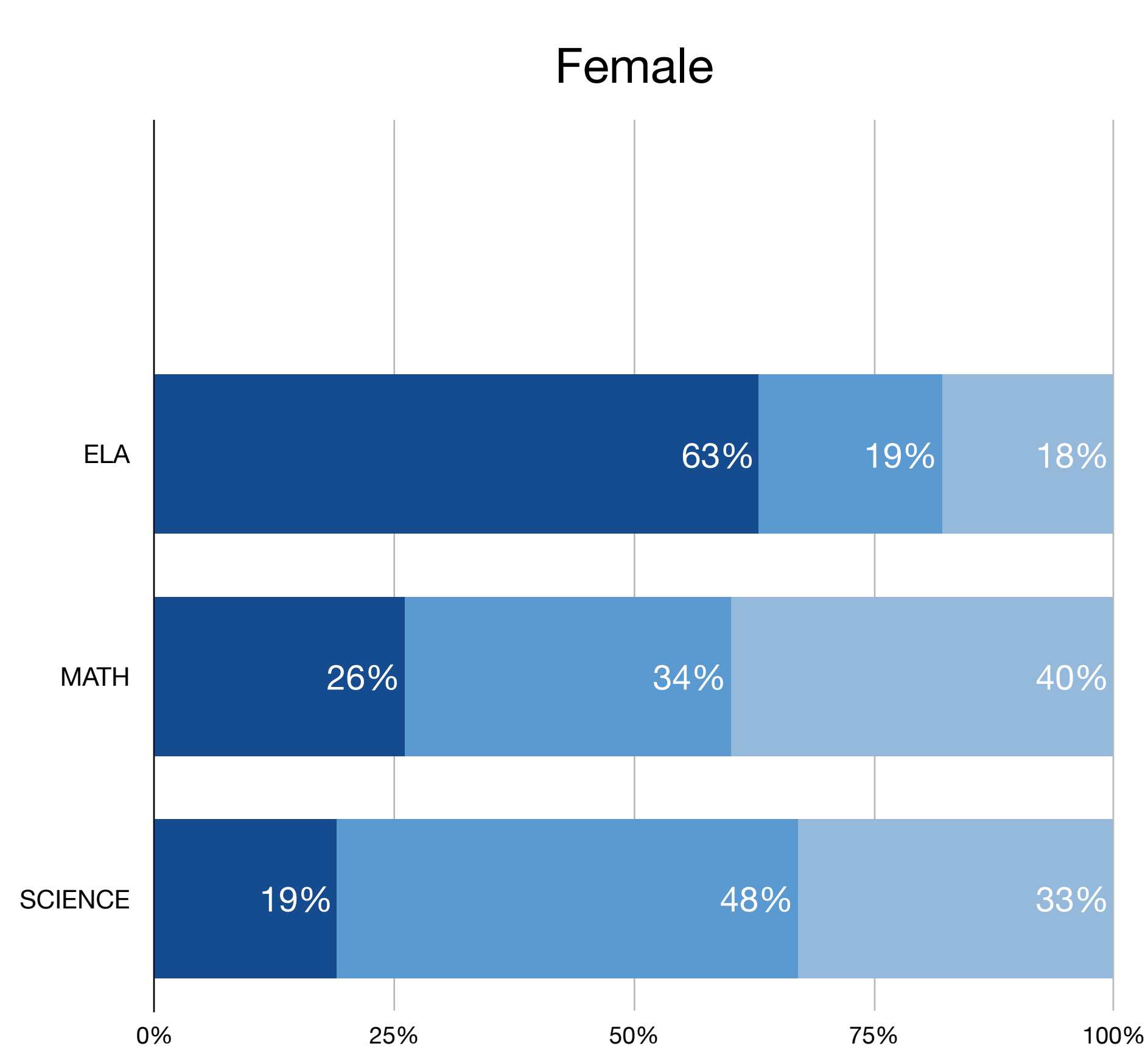
Start Strong Student Performance By Groups



Start Strong Student Performance By Race



Start Strong Student Performance by Gender

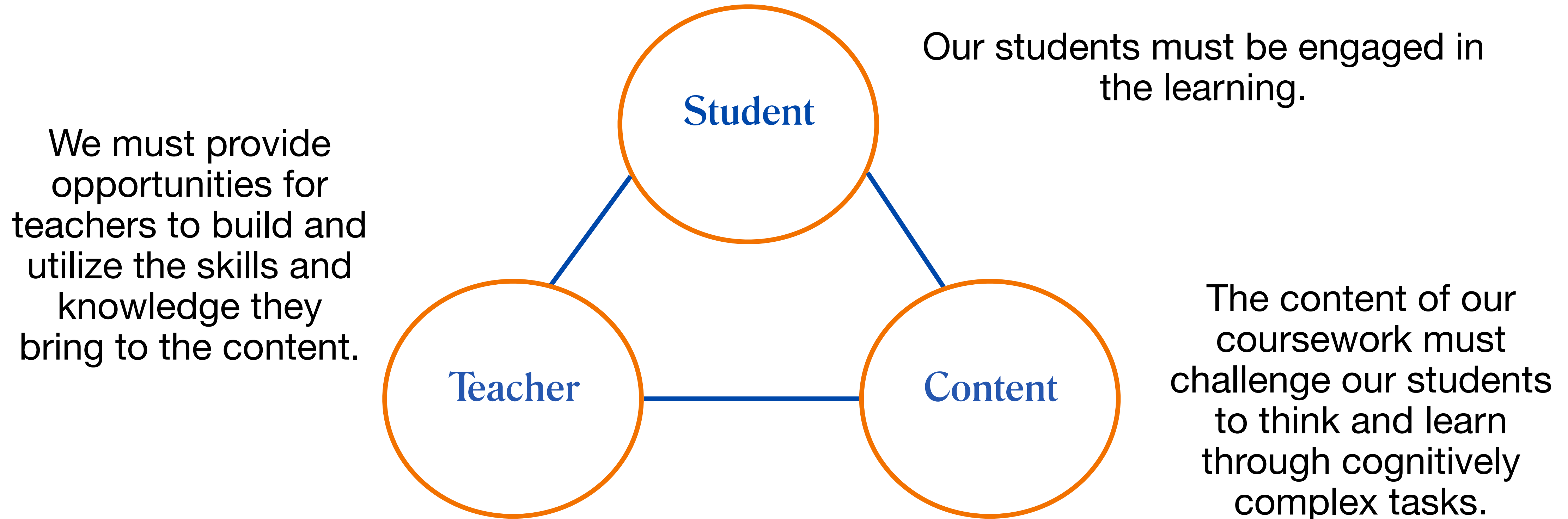


■ Less Support Needed ■ Some Support Needed ■ Strong Support Needed

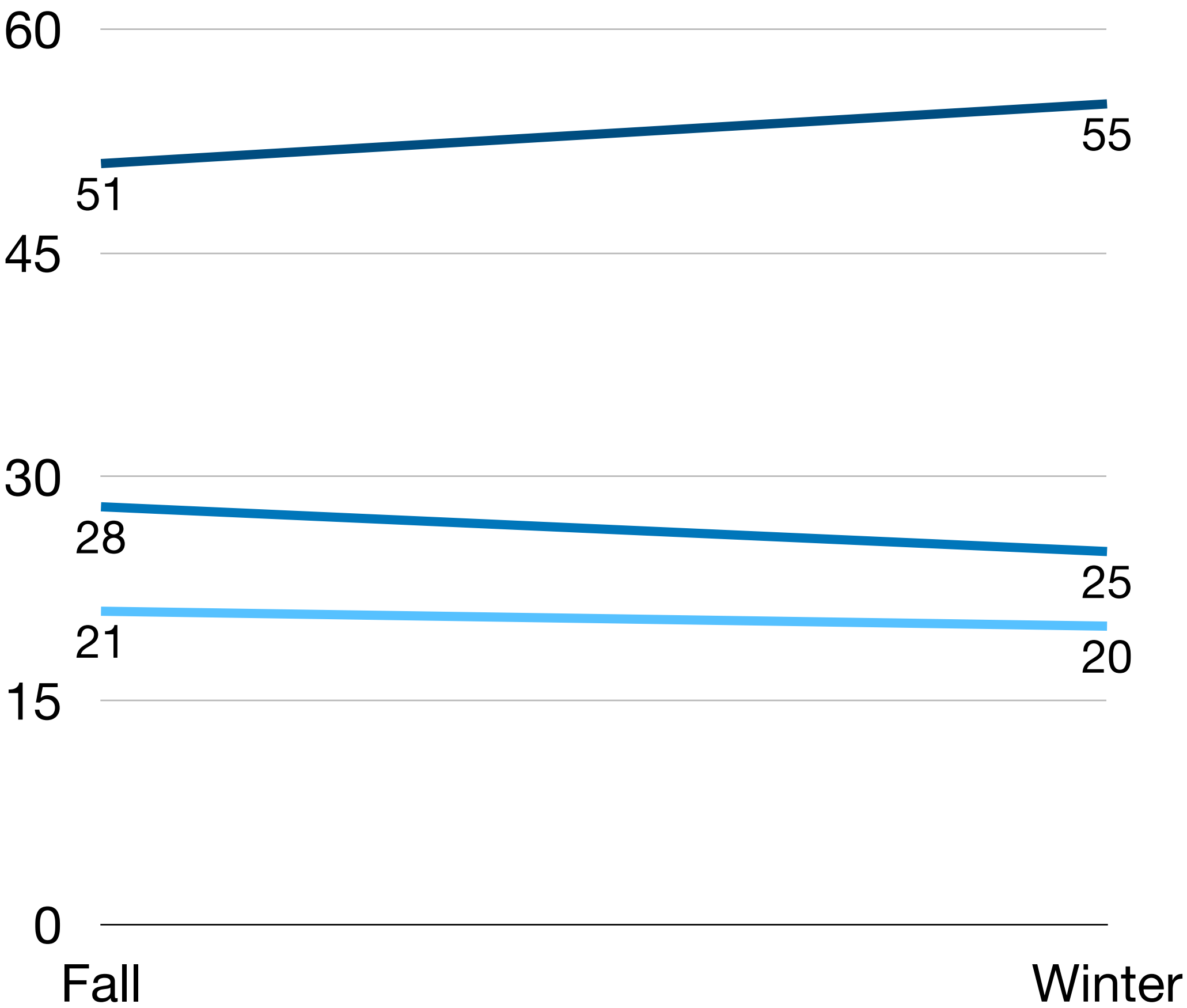
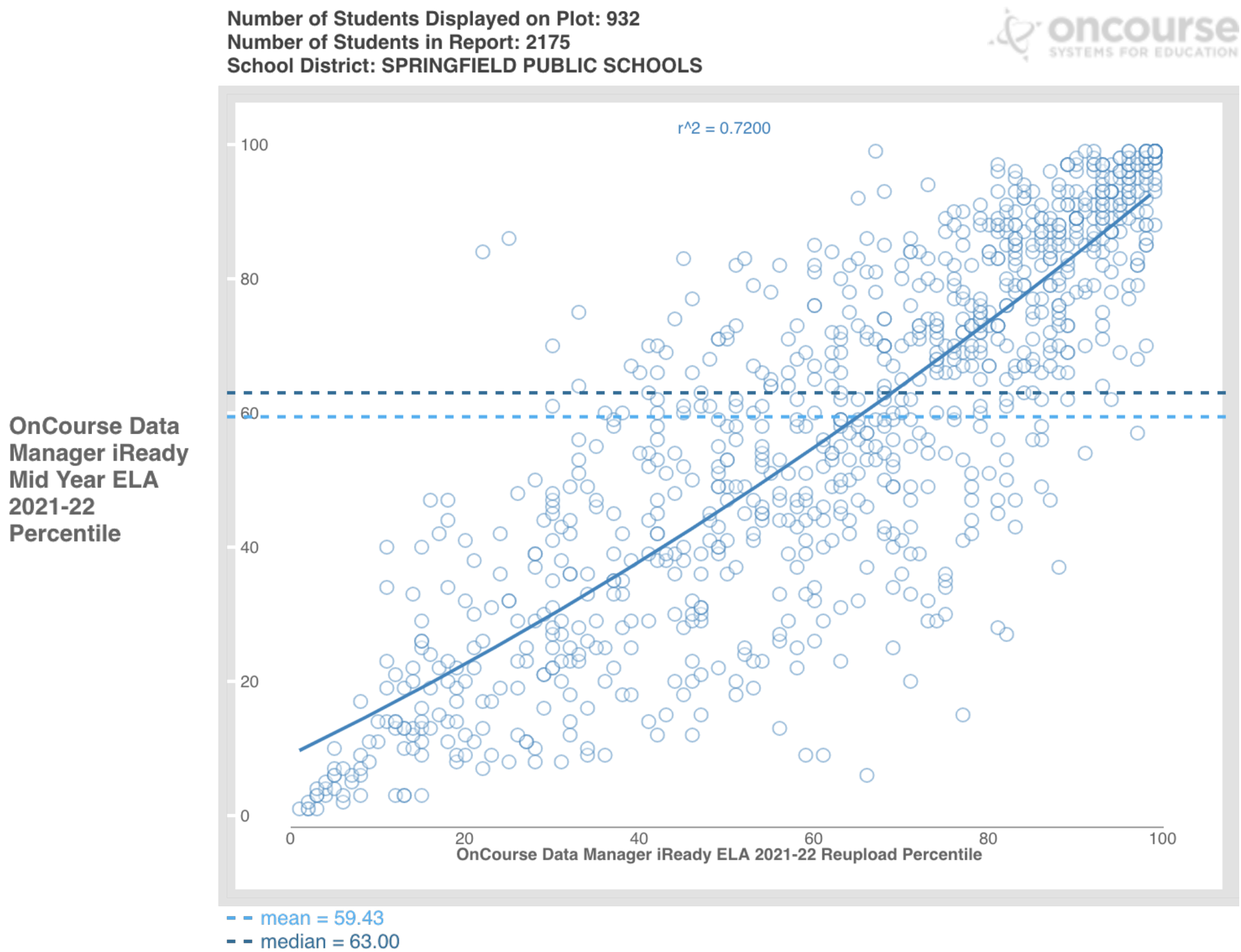
The Instructional Core

How do we make the “Springfield Experience” the best learning experience for our students?

The Instructional Core is the interaction between Teacher, Student, and Content. It drives our planning, budget, and program implementation.



Reading iReady Learning Snapshot



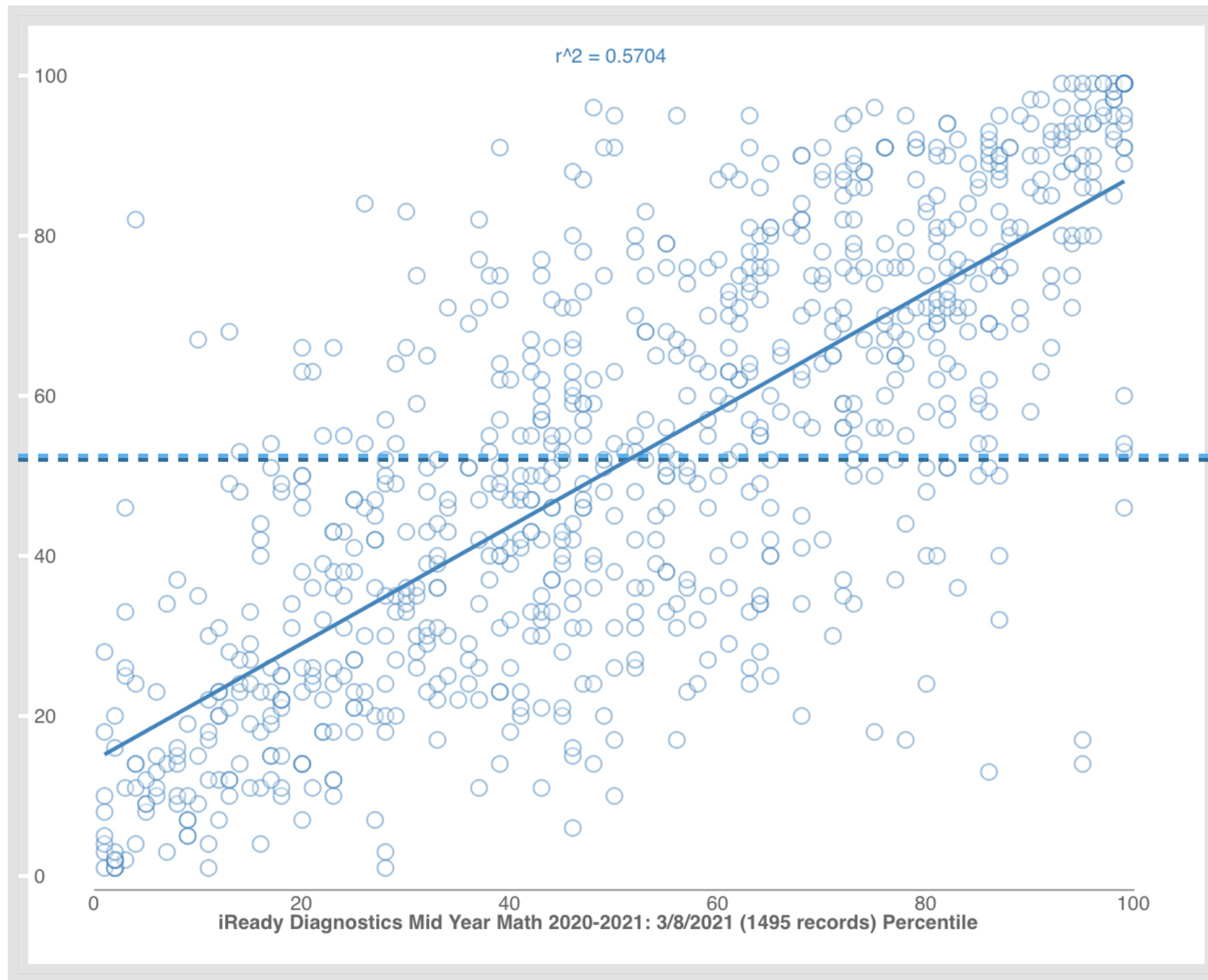
- At Risk
- One Grade Level Below
- On/Above Grade Level

Math iReady Learning Snapshot

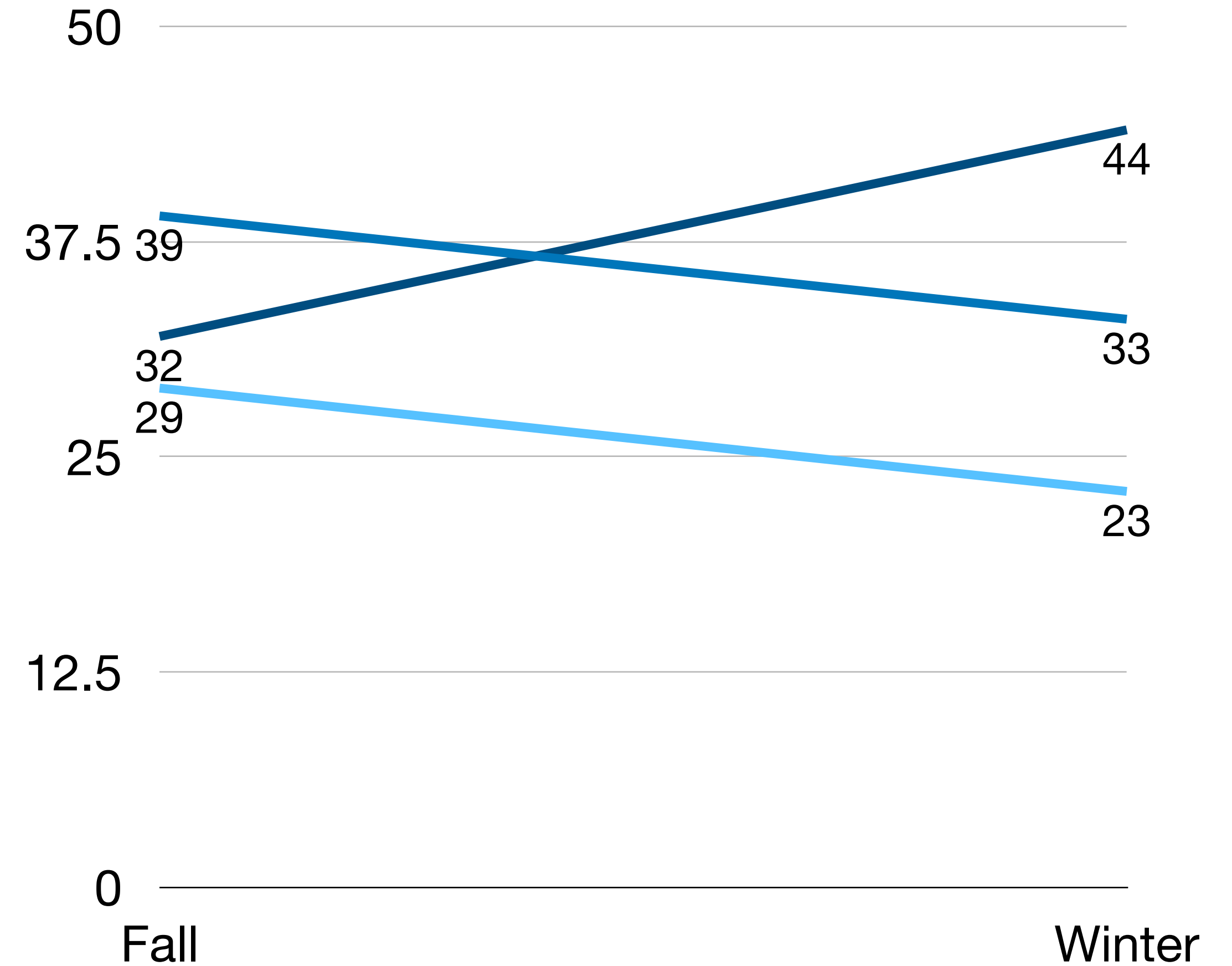
Number of Students Displayed on Plot: 805
 Number of Students in Report: 2177
 School District: SPRINGFIELD PUBLIC SCHOOLS



OnCourse Data
 Manager iReady
 Math 2021-22
 Reupload
 Percentile



- - mean = 52.52
 - - median = 52.00



- At Risk
- One Grade Level Below
- On/Above Grade Level

2021-2022 Initiatives to Support Student Learning

Grades 3-5 WIN “What I Need” Period

- Academic (AIS), Supplemental (Special Education), and SEL Support (Guidance and Support Groups)
- Gifted and Talented enrichment through STEAM Projects, PLTW, Art/Music, and Writing.
- World Language Exploration through French and Spanish

Departmentalizing Grade 5

- Allow for teachers to master subject areas and have a greater ability to differentiate.
- Cooperative teaching approach. Grade level teachers will work together to collaborate and coordinate content.
- Prepare students for the transition to middle and high school.

Student Activity Resource Center (SARC)

- Implemented this year at the middle and high school, students continue to participate in Student Activity Resource Center (SARC) based on assessment data and teacher recommendations. Students assignments are tailored for their individually identified needs. The SARC sessions occur every other week.

Intervention Strategies

Interventions, including academic and SEL supports are being offered in-person or virtual as well as, before and after school depending on need and scheduling.

- At the High School all students are afforded the opportunity to sign-up for after school support. Teachers are available to provide assistance, or students can come for quiet study time. The sessions are held on Tuesdays and Thursdays, from 2:35 pm to 4:00 pm
- At the Middle School an Intervention Tutorial Program will be provided to support specific skill sets in the areas of English Language Arts, It will run for 10 weeks. The sessions are held on Tuesdays and Thursdays, from 2:30 pm to 3:30 pm
- Tutor.com will be offered through The Princeton Review. It will provide online one-to-one real-time homework and tutorial assistance for specific content areas.
- Information about after-school tutorial programs is being shared, schedules and openings are based on staffing availability.

Additional Supports

- **Peer Tutoring Club**

In this after school club, selected peer tutors work with other students in grades 3-5 to help them with math and/or ELA. The peer tutors are provided with resources to practice basic skills in each students' grade levels. Student recommended by their homeroom teachers. Tuesdays are ELA days, and Thursdays are Math days.

- **Rutgers Reading Club**

This program designed for struggling readers who demonstrate a drive to further develop their skills. Each teacher is trained by a Rutgers Literacy coach, who supports the teachers throughout the program via observations, small group mini lessons, and debriefings. The groups are limited to three students per group. This after-school program meets twice a week for an hour each session for twelve weeks.

- If you have any questions about these programs, please contact your building principals for more information.

Social and Emotional Support (SEL)

Social and Emotional Support Across Schools

Counseling groups are being offered in-person or virtual, before or after school.

TLS Social Emotional Leaders Program provides students the opportunity to connect with other peers while exploring SEL skills. The School Counselor will provide a structured group environment that targets specific CASEL-aligned social emotional competencies

District Mental Health Workshops have been offered and continue to be planned for students and parents.

Introducing eiPulse at FMG & JDHS to gain a deeper understanding of our students' and staff experiences.

Diversity, Equity, Inclusion, and Access (DEIA)

- In 2021-2022 SPS joined the New Jersey Network of Superintendents, a group of districts working to identify and address issues related to equity
- Analyze data to identify areas impacted by disproportionality
- Continue to revisit critical curriculum and programming updates
- Annually review and update curricula based on 5-year plan and changes to state standards
- Textbooks reviewed and updated
- Council for Diversity, Equity, Inclusion, & Access Meets Monthly

Current Status of Schools

COVID-19 Case Dashboard : 2021 -2022

10/25/2021	2			1		3
11/1/2021						0
11/8/2021	2			5	1	8
11/15/2021		2	1	3	1	7
11/22/2021	1		1			2
11/29/2021	2	2	3	4	1	12
12/6/2021	1	2			5	8
12/13/2021	2	2	1	5	7	17
12/20/2021	12	10	5	18	45	90
Student Only Cases Reported During the Holiday Break 12/24**	44	14	13	55	51	177
1/3/2022	4		2	9	7	22
1/10/2022	7	3	3	13	3	29
1/17/2022	9	7	3	7	4	30
1/24/2022		2	2	8	6	18
1/31/2022	2	1	1	1		5
2/7/2022			1			1
2/14/2022						
2/21/2022						
2/28/2022						
3/7/2022						
3/14/2022						
3/21/2022						
3/28/2022						
4/4/2022						
4/11/2022						
4/18/2022						
4/25/2022						
5/2/2022						
5/9/2022						
5/16/2022						
5/23/2022						
5/30/2022						
6/6/2022						
6/13/2022						
6/20/2022						
6/27/2022						
21-22 Total Positive COVID-19 Cases	93	47	39	135	134	448

2021 -2022

Since September 1, 2021:

448 Cases of COVID-19 Reported

Since January 3, 2022:

105 Cases of COVID-19 Reported

Quarantine Protocols Update

- Consultation with Mr. Michael Fitzpatrick, Local Health Office
- Close Contacts:
 - Household close contacts quarantine period is 5 days
 - Fully vaccinated students/staff (asymptomatic) or individuals who have tested positive (via a PCR test) in the last 90 days are not required to quarantine
 - Must remain asymptomatic
- Positive Cases:
 - Isolation/Quarantine for 5 days following the onset of symptoms or date of positive test
 - May return on day 6 if fever-free for 24 hours and improvement of symptoms
 - Must wear mask in all activities (except when eating/drinking) for days 6-10.
- Updates available on our website at: <https://www.springfieldschools.com/Content2/-content-922>

Parent Programs

Providing Emotional Support for Your Child through COVID and Beyond



A FREE VIRTUAL PARENTING PROGRAM FUNDED BY
SPRINGFIELD PUBLIC SCHOOLS

PRESENTED BY ARLENE KLEMOW
TRAINING DIRECTOR,
CARING CONTACT



FEBRUARY 8, 2022
7:00PM - 8:00PM
[MEET.GOOGLE.COM/PPC-JBHO-CZZ](https://meet.google.com/ppc-jbho-czz)

A Multi-Community Parent Support Program from the Student Assistance Coordinators of
Elizabeth, Hillside, Scotch Plains-Fanwood, Springfield, Westfield & Union



<https://meet.google.com/ppc-jbho-czz>

.HAPPY.

Valentine's
Day

