

Springfield 2021-2022

Superintendent's Report

August 16, 2021

#SPSCompassionate&Extraordinary

Our Vision & Mission

Vision:

Cultivating compassionate and extraordinary learners.

Mission:

Springfield Public Schools will challenge every student through meaningful, engaging experiences — empowering all students to flourish and contribute in an evolving world.

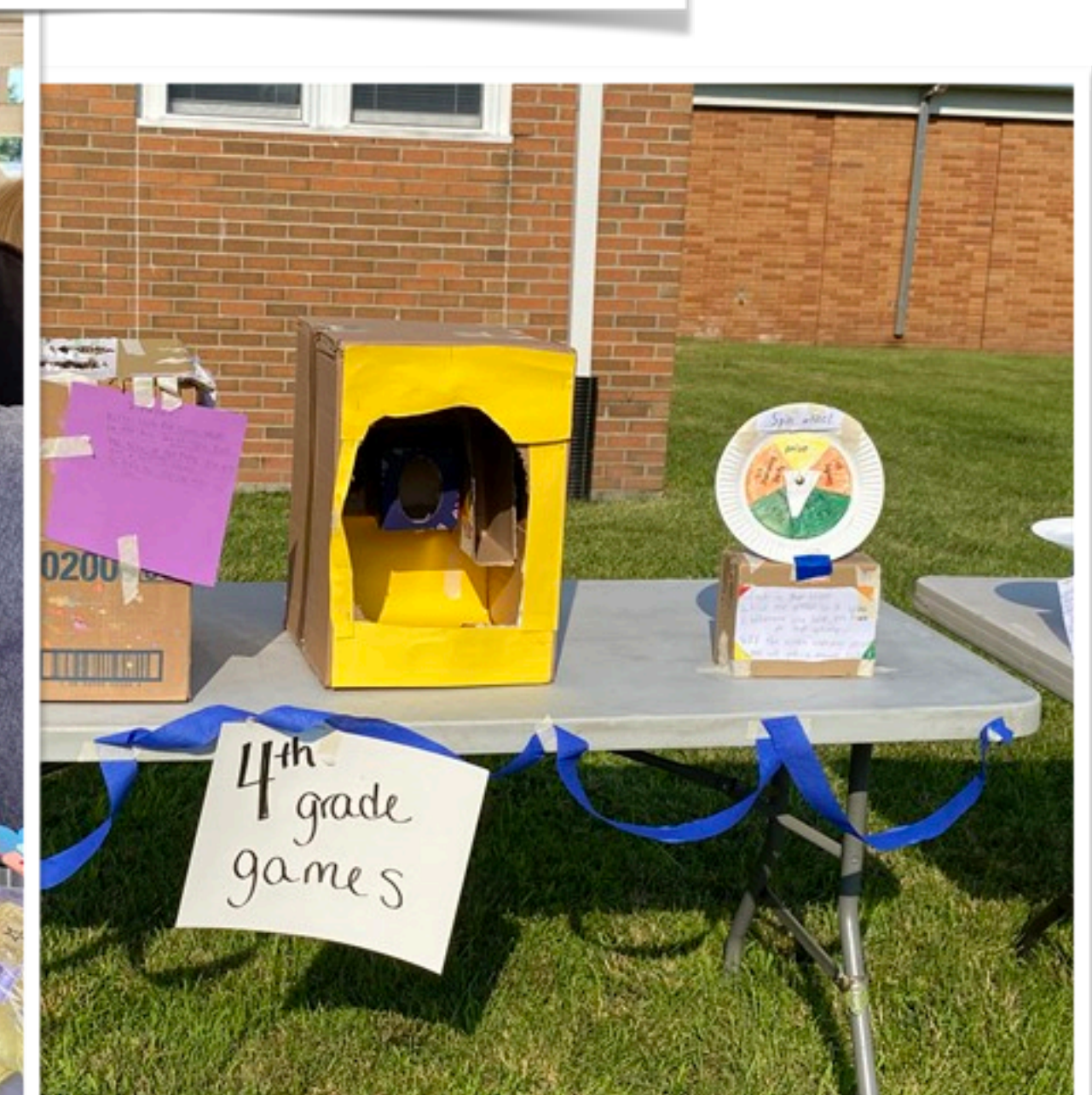
Report Overview

- Student Celebrations
 - Golf Team
 - Track Team
- Summer Program Highlights
- 2021-2022 School Year
 - The Road Forward: Plan for Safe Return to In-Person Instruction

Thank You For Your Service

**Mr. William Knorr, Supervisor of Buildings and Grounds
13 Years of Service**

Summer Academic Support Programs



Summer Academic Support Programs

Program Overview:

- Prioritized outreach to students identified as needing additional support (academic, school transition, social-emotional)
- Fully in-person programming for ESY & grades K-8
- Introduced a credit recovery program at JDHS for high school students, hybrid program

Summer Academic Support Programs

Program Highlights:

- Total students participated: 347 (15% of SPS students)
- JDHS students who volunteered: 82
- No. of students who earned lost credit: 34/34 students earned credit for 52 courses
- No. of dedicated staff: 42
- Thanks to Wendy Garrod, Dana Kelly, Tiffany Boehm, & Erica Scudero for their leadership!

2021-2022

Safe Return to In-Person Instruction Plan

Phases of Reopening: Critical Factors

Full Virtual

- COVID-19 Activity Report indicates “Very High” Activity Level
- Local hospitals report severe capacity challenges
- The number of cases is significantly increasing
- Multiple positive cases reported in a school
- Recommendation by local health officials
- Insufficient Staff to Student Ratio

A/B Hybrid In-Person

- COVID-19 Activity Report indicates “High” Risk Level (Orange)
- Hospitals report capacity challenges
- The number of cases is moderately increasing
- Maintain 6 Feet of Social Distance
- Recommendation by local health officials
- Sufficient Staff to Student Ratio

Expanded Hybrid

- COVID-19 Activity Report is “High” or “Moderate”
- The number of cases is stable, or decreasing
- Zero to limited school site transmission cases
- Additional risk mitigation efforts allow for less than 6 feet of physical distance between desks
- Sufficient Staff to Student Ratio
- Staff identified as “At-Risk” have access to vaccine.

New Normal

- COVID-19 Activity Report is “Low” or “Moderate”
- “State of Emergency” shifts
- Indoor capacity requirements eased
- Social distancing requirements allow for full use of classroom space
- All staff have access to the vaccine
- Families and students have access to the vaccine

2021-2022 Overview

- Our primary, overarching goal is to provide consistent learning experiences in a healthy and safe environment.
- The district is responsible for the health and safety of the 2,600 staff and students that make up the Springfield Public School learning community
 - Minimize classroom or school closures
 - Keep our students and staff healthy and safe
 - Provide a positive and supportive environment in a challenging time

State Requirements Update

Current State Requirements & Guidance

- Executive Order No. 251: Masks are required in all indoor school facilities, unless extreme indoor temperatures pose a risk.
 - Exemptions made in accordance with the guidance
 - Require a physician's note
- Social distancing rules are still in effect for schools, with a preference of 3 feet when masked and 6 feet when eating
- No option for virtual schooling, except for cases of COVID-related quarantine or a declared public emergency
 - In the case of public emergency, the school must be closed for three or more consecutive days in order for virtual instruction to be allowed
- Students with significant health concerns will follow the process to request home instruction, Policy No. 2412.

2021-2022 Overview

September 2021:

- In-person, full day
- Lunch times adjusted across schools to provide space and utilize lunch aides
- Before-and After-Care
- After school academic support programs begin in early October
- Athletic and extracurricular programs as programmed

Safe Return to In-Person Instruction Plan

- Survey Tool and Plan Draft Language Shared in June
- Acknowledge the rapidly changing environment
 - June 28, 2021: NJDOE, “The Road Forward” Guidance
 - August 5, 2021: CDC, “Guidance for COVID-19 Prevention in K-12 Schools”
 - August 6, 2021: Governor Murphy E.O. 251 Mandates Masks
- Revised Policy No. 1648 “Plan for Safe Return to In-Person Instruction and Continuity of Services”

Safe Return to In-Person Instruction Plan

- Mask requirements will follow the guidance of the CDC, State, and local health officials
 - Executive Order No. 251: “All ‘school districts’ must maintain a policy regarding mandatory use of face masks by staff, students, and visitors in the indoor portion of the school district premises”
 - Notes regarding the exclusions:
 - All of our classrooms have air conditioners, and students and staff will be moved in the event of extreme heat indoors
 - Receive medical direction for the IEP or 504 regarding wearing of masks
 - In outdoor spaces, during physical education, masks will not be required based on the use of appropriate distancing

Safe Return to In-Person Instruction Plan

- Mask requirements will follow the guidance of the CDC, State, and local health officials
 - When the state approves optional mask wearing, we will consult with our local health official to make adjustments to practice
 - Students who refuse to comply will be sent home and placed in an isolation space until picked up; will be assigned asynchronous work
 - Mask-breaks will be scheduled in outdoor spaces for students in grades K-5, weather permitting
 - Mask breaks will be permitted in specific outdoor spaces for students in grades 6-12, weather permitting

Safe Return to In-Person Instruction Plan

- Social distancing protocols will be followed to the best of our ability
 - 3 feet of space between students in classrooms
 - Grades K-5 will continue use of partitions to support appropriate spacing
 - Grades 6-12 partitions upon request by student/parent
 - 6 feet of space when eating lunch
 - Make outdoor space optional, weather dependent
 - Utilize partitions in all schools to ensure proper spacing
 - Assigned seating for contact tracing purposes

Screening & Notification

- When the region is in a moderate/yellow status, families will be responsible for monitoring for symptoms.
 - If the district sees an increase in positive cases and families are not reporting the cases, the district may re-institute the use of the daily questionnaire at any time.
- When the region is in a high/orange status, the daily questionnaire will be required.

Vaccination Update

Local Vaccination Snapshot <i>as of 8-10-21</i>					
	Fully vaccinated 12+	Fully Vaccinated 12-17 y/o	Fully vaccinated 18+	Fully Vaccinated 18-29 y/o	Fully Vaccinated 65+
New Jersey	66%	36%	69%	-	85%
Essex County	64%	35%	67%	19%	82%
Morris County	74%	45%	77%	13%	91%
Union County	67%	38%	70%	18%	82%

Springfield	78%	66%	79%	75%	84%
-------------	-----	-----	-----	-----	-----

Vaccination Update

Current Status

- As of today, approximately 70% staff members have been identified as fully vaccinated.
- Parents of students who have been vaccinated are asked to contact the school nurse so that the status can be noted.
- We are developing a process for the Fall for FMG & JDHS students to share their vaccination status with the nurses.

How to Handle Quarantines?

- Families reporting a student is quarantined related to Covid-19 will be required to share information related to the contact with the school nurse and/or the health department in order to be eligible to participate. Participation will be limited based on the quarantine guidelines set by the NJDOH/NJDOE/CDC
- Remote instruction will include asynchronous and synchronous learning opportunities, depending on the course
 - Physical Education and Electives will not be offered synchronous instruction
 - Asynchronous work will be accessible via OnCourse and Google Classroom
- Students quarantining due to travel may not be eligible for remote instruction

2021-2022 Program Updates

- All grades: Introducing a “Multi-Tiered Systems of Supports (MTSS)” model to support appropriate interventions for struggling students.
- Grades 3-5: Created a W.I.N “What I Need” period to provide support and enrichment opportunities
- Grades 6-8: Utilizing a block schedule to reduce the number of transitions between classes on a daily basis, moved the activity period to the end of the day to provide additional opportunities for academic support.
- Grades 9-12: Adjusted the activity period time to provide students with options including a mid-day study hall and access to academic support

2021-2022 Gifted & Talented Program Updates

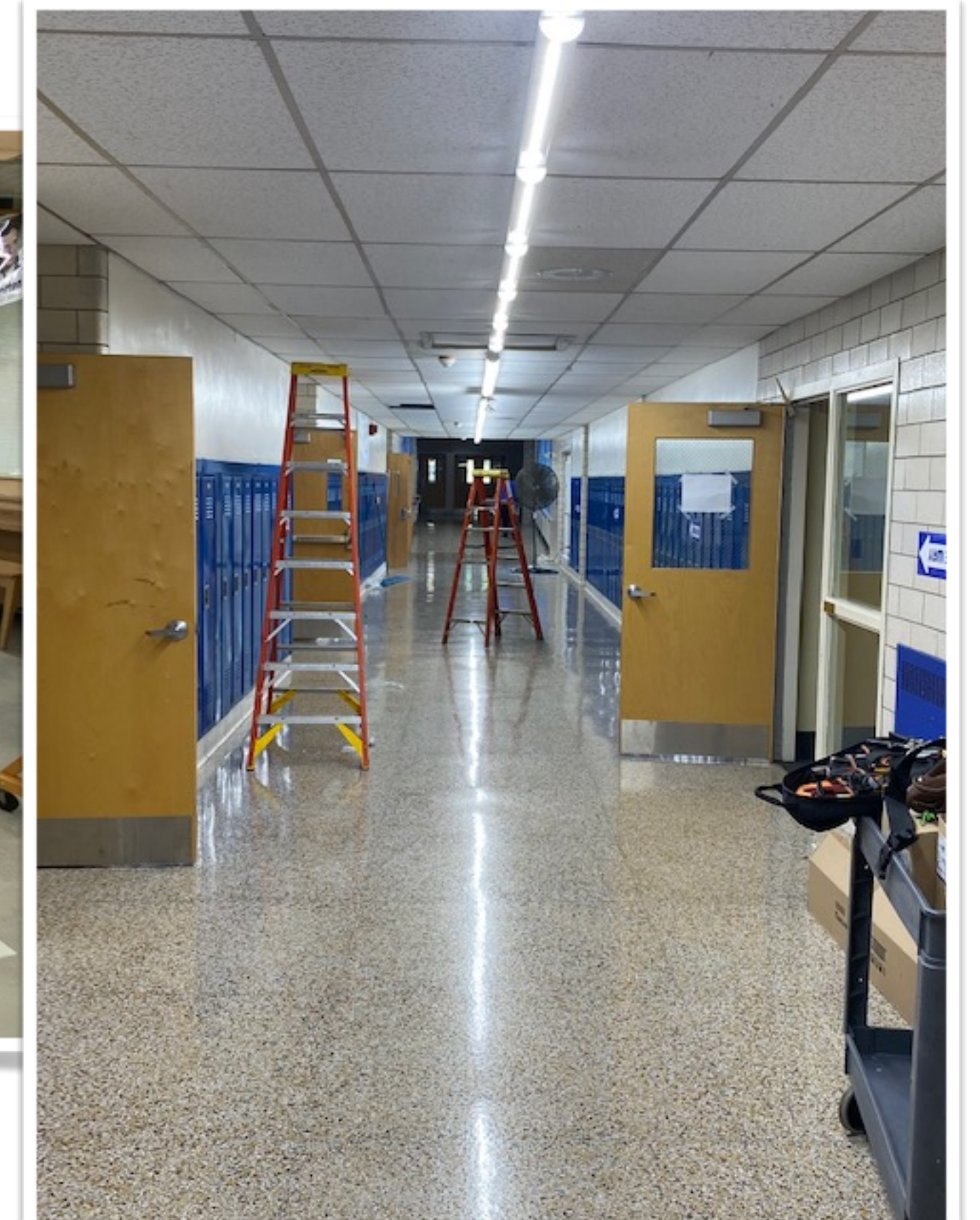
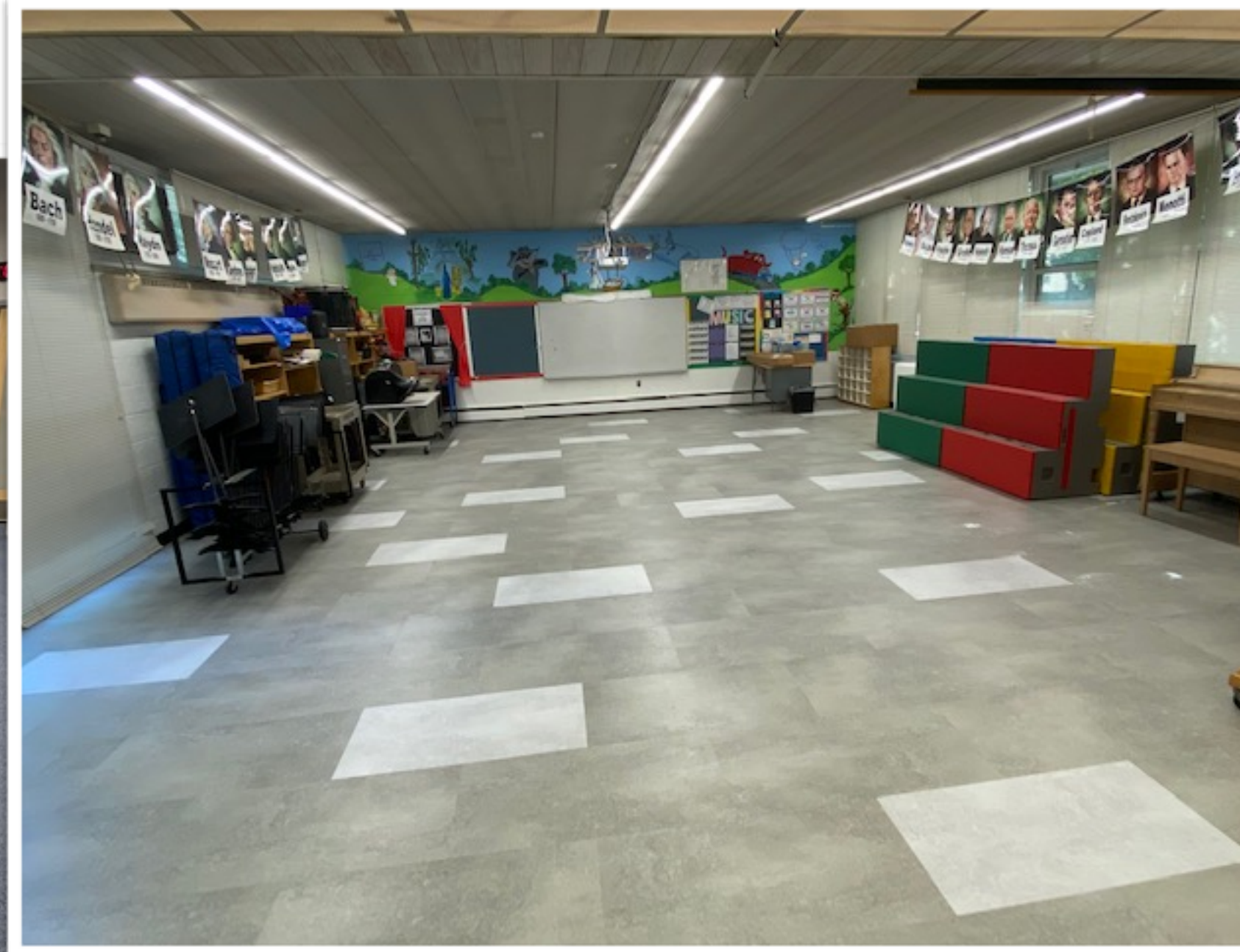
- Mission:
 - The mission is to provide a meaningful and rigorous education that instills the value of lifelong learning and empowers all students to reach their full potential and become self-fulfilled, creative leaders, in accordance with the comprehensive standards of our state. We accomplish this by offering challenging, real world experiences in a student-centered environment.
- Identification process uses multiple measures including:
 - Cognitive Abilities Test (CogAT)
 - Start Strong (NJDOE)
 - iReady Diagnostic Scores
 - DRA2 Level – Administered in the Fall and Spring grades K-8
 - Student Portfolios – Provided by classroom teacher
 - Gifted Indicators Checklist – Completed by classroom teacher

2021-2022 Gifted & Talented Program Updates

- Program Overview:
 - Kindergarten students will be supported to extend their understanding in a developmentally appropriate and engaging learning environment
 - Grades 1-2: Teachers have access to curriculum extensions, all students will have to access the Gifted and Talented Virtual Classroom
 - Grade 3: G&T Teacher will support extended learning classroom experiences and W.I.N. period support
 - Grades 4-5: Targeted G&T instruction during the W.I.N. period will extend classroom learning and group students based on their content strengths
 - Grades 6-12: Access to specific content programs with higher levels of academic challenges (i.e. Pre-Algebra and Advanced Placement Classes)

2021-2022 Preparing Our Schools

- Adding screens to all windows at Jonathan Dayton High School and James Caldwell School, delivery and installation over the next 4-6 weeks
- New Intercom System at James Caldwell School
- School Projects





First Day of School: Thursday, September 9th