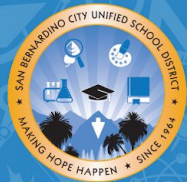


# **LCAP: Metrics, Expenditures, and Input**

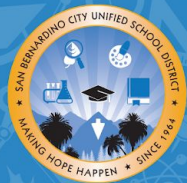
**April 7, 2023**





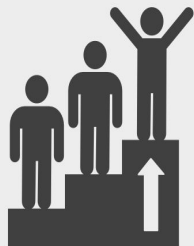
# Objectives

- Review of LCAP Goals
- Year 2- Metrics Update
- Year 2- Expenditure Update
- 2023-2024 Governor's State Budget
- Input



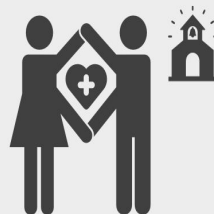
# 2021-2024 LCAP Goals

GOAL **#1** INVESTING  
\$176,526,635



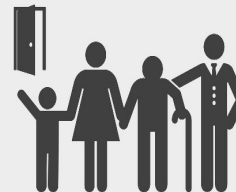
Academic  
Achievement

GOAL **#2** INVESTING  
\$30,540,821



Safe & Welcoming  
Learning Environments

GOAL **#3** INVESTING  
\$10,029,904



Student, Family,  
and Community  
Involvement/Support

# Goal 1 Year 2 Metric Outcomes

English Learner (EL)  
Low-Income (LI)  
Foster Youth(FY)

1.1



INCREASE STUDENTS MEETING  
OR EXCEEDING STANDARDS IN  
ELA AND MATH

**Baseline 2018-2019  
CAASPP Points Below  
Standard**

**Districtwide ELA: 25**

- EL: 40.8
- LI: 29
- FY: 61.7

**Districtwide Math: 61.9**

- EL: 67.8
- LI: 65.6
- FY: 90.5

**2021-2022  
CAASPP Points Below  
Standard**

**Districtwide ELA: 49.9**

- EL: 64.8
- LI: 49.3
- FY: 65.6

**Districtwide Math: 90.2**

- EL: 102.7
- LI: 94.4
- FY: 112

1.2



INCREASE STUDENTS "ON TRACK" IN  
NWEA READING AND MATH

**Baseline Fall 2021  
NWEA Percent on Track**

**Districtwide Reading: 23.7%**

- EL: 7.8%
- LI: 22.1%
- FY: 14.3%

**Districtwide Math: 15.6%**

- EL: 6.4%
- LI: 14.3%
- FY: 9.1%

**Winter 2023  
NWEA Percent on Track**

**Districtwide Reading: 20.7%**

- EL: 6.2%
- LI: 19.2%
- FY: 13.3%

**Districtwide Math: 16.6%**

- EL: 7.4%
- LI: 15.2%
- FY: 13.3%

1.3



IMPROVE FOUR-YEAR COHORT  
GRADUATION RATE

**Baseline Class of 2020  
Four-Year Graduation  
Rate**

**Districtwide 86.8%**

- EL: 75.7%
- LI: 86.6%
- FY: 69.7%

**Class of 2021-2022  
Four-Year Graduation  
Rate**

**Districtwide 89.7%**

- EL: 81.1%
- LI: 89.7%
- FY: 83.3%

# Goal 1: Year 2 Metric Outcomes

English Learner (EL)  
Low-Income (LI)  
Foster Youth(FY)

1.4



RAISE AVERAGE DAILY  
ATTENDANCE RATE

**Baseline 2019-2020**

**Average Daily  
Attendance**

**Districtwide 94.3%**

- EL: 94.7%
- LI: 94.2%
- FY: 93.32%

**2021-2022**

**Average Daily  
Attendance**

**Districtwide 85.1%**

- EL: 87.4%
- LI: 86.0%
- FY: 86.2%

1.5



IMPROVE AP PASS RATE

**Baseline 2019-2020**

**Students who took AP  
exams passed them with  
a score of 3 or higher**

**Districtwide: 48.6%**

- EL: 60.0%
- LI: 49.0%
- FY: \*

Data is suppressed if the  
student population is less  
than 11

**2021-2022**

**Students who took AP  
exams passed them with  
a score of 3 or higher**

**Districtwide: 40.2%**

- EL: 43.4%
- LI: 40.3%
- FY: \*

Data is suppressed if the  
student population is less  
than 11

1.6



INCREASE STUDENTS EARNING AN  
IB DIPLOMA

**Baseline 2019-2020**

**Rate of students who  
are in IB and earned  
an IB Diploma**

**44% at Arroyo Valley  
51% at Cajon**

**2021-2022**

**Rate of students who  
are in IB and earned  
an IB Diploma**

**44% at Arroyo Valley  
48% at Cajon**



# Goal 1: Year 2 Metric Outcomes

English Learner (EL)  
Low-Income (LI)  
Foster Youth(FY)

1.7



IMPROVE IB EXAM PASS RATE

**Baseline 2019-2020**  
**Rate of students**  
**completing IB exams**  
**with 4 or higher**

50% at Arroyo Valley  
52% at Cajon

**2021-2022**  
**Rate of students**  
**completing IB exams**  
**with 4 or higher**

63.8% at Arroyo Valley  
45% at Cajon

1.8



RAISE 4-YEAR A-G  
COMPLETION RATE

**Baseline 2019-2020**  
**Four Year A-G**  
**Completion Rate**

Districtwide: 38.4%

- EL: 18.1%
- LI: 37.1%
- FY: 13.2%

**2021-2022**  
**Four Year A-G**  
**Completion Rate**

Districtwide: 38.9%

- EL: 18.3%
- LI: 37.8%
- FY: 16.0%

1.9



INCREASE CTE PATHWAY  
COMPLETION

**Baseline 2019-2020**  
**Percent of**  
**Graduates who**  
**completed at least**  
**one CTE Pathway**

Districtwide 36.4%

- EL: 9.0%
- LI: 35.5%
- FY: 30.0%

**2021-2022**  
**Percent of**  
**Graduates who**  
**completed at least**  
**one CTE Pathway**

Districtwide 30.4%

- EL: 15.1%
- LI: 30.5%
- FY: 20.0%

# Goal 1: Year 2 Metric Outcomes

English Learner (EL)  
Low-Income (LI)  
Foster Youth(FY)

1.10



INCREASE % OF ELs  
BECOMING ENGLISH  
PROFICIENT ON ELPAC

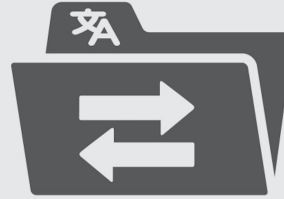
**Baseline 2018-2019  
ELPAC Summative Data**

- 42% are making progress toward English Language Proficiency

**2021-2022  
ELPAC Summative Data**

- 11.06% of all EL students received an overall score of 4 on the ELPAC
- 50.3% are making progress toward English Language Proficiency

1.11



IMPROVE EL  
RECLASSIFICATION RATE

**Baseline 2019-2020  
Reclassified  
English Learners**

- 22.6%

**2021-2022  
Reclassified  
English Learners**

- 8%

1.12  
1.13



REDUCE DROPOUT RATES

**Baseline 2019-2020  
Dropout rates**

0.5% middle school students  
6.0% high school students

**2021-2022  
Dropout rates**

0.4% middle school students  
5.9% high school students

- EL 13.1%
- LI: 6%
- FY: 8.3%

# Goal 1: Year 2 Metric Outcomes

English Learner (EL)  
Low-Income (LI)  
Foster Youth(FY)

1.14



ELIMINATE TEACHER  
MISASSIGNMENTS

**Baseline 2019-2020**

**Total Teacher Misassignments**

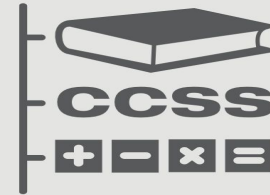
- 87

**2021-2022**

**Total Teacher Misassignments**

- Zero

1.15



MAINTAIN STUDENT  
ACCESS TO  
STANDARDS-ALIGNED  
CURRICULUM

**Baseline 2019-2020**

**Students Have Access to Standards-  
Aligned Instructional Materials**

- 100%

**2021-2022**

**Students Have Access to Standards-  
Aligned Instructional Materials**

- 100%



# Goal 1: Year 2 Metric Outcomes

English Learner (EL)  
Low-Income (LI)  
Foster Youth(FY)

1.16



MAINTAIN  
IMPLEMENTATION  
OF CCSS FOR ALL  
STUDENTS

**Baseline 2019-2020**  
**Students Have Access to Standards-  
Aligned Instructional Materials**

- 100%

**2021-2022**  
**Students Have Access to Standards-  
Aligned Instructional Materials**

- 100%

1.17



MAINTAIN ACCESS  
TO A BROAD COURSE  
OF STUDY

**Baseline 2019-2020**  
**All Students Have Access and  
Enrollment in a Broad Course of Study**

- All

**2021-2022**  
**All Students Have Access and  
Enrollment in a Broad Course of Study**

- All

# Goal 2: Year 2 Metric Outcomes

English Learner (EL)  
Low-Income (LI)  
Foster Youth(FY)

2.1



INCREASE STUDENT SENSE OF  
SCHOOL CONNECTEDNESS

**Baseline 2020-2021  
Percent Favorable**

**Elementary: 74%**

- EL: 72%
- LI: 74%
- FY: 72%

**Secondary: 57%**

- EL: 64%
- LI: 57%
- FY: 52%

**2022-2023  
Percent Favorable  
Panorama Survey  
in Progress**

2.2



IMPROVE STUDENT SENSE OF  
SCHOOL SAFETY

**Baseline 2020-2021  
Percent Favorable**

**Elementary: 77%**

- EL: 75%
- LI: 77%
- FY: 67%

**Secondary: 82%**

- EL: 79%
- LI: 81%
- FY: 81%

**2022-2023  
Percent Favorable  
Panorama Survey in  
Progress**

2.3



DECREASE OVERALL  
SUSPENSION RATE

**Baseline 2019-2020  
Students that were  
Suspended**

**Districtwide 3.7%**

- EL: 2.7%
- LI: 4.0%
- FY: 7.4%

**2021-2022  
Students that  
were Suspended**

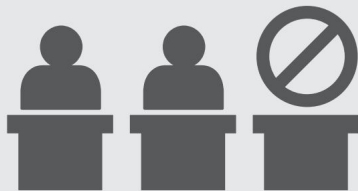
**Districtwide 4.7%**

- EL: 3.5%
- LI: 4.9%
- FY: 7.1%

# Goal 2: Year 2 Metric Outcomes

English Learner (EL)  
Low-Income (LI)  
Foster Youth(FY)

2.4



REDUCE OVERALL CHRONIC  
ABSENTEEISM

**Baseline 2019-2020**  
**Chronically Absent**  
**(K-12)**

**Districtwide: 16.5%**  
• EL: 12.8%  
• LI: 16.9%  
• FY: 19.48%

**2021-2022**  
**Chronically Absent**  
**(K-12)**

**Districtwide: 44%**  
• EL: 42.5%  
• LI: 45.2%  
• FY: 42.8%

2.5



DECREASE EXPULSION RATE

**Baseline 2019-2020**  
**Students Expelled**  
**Districtwide 0.1%**

• EL: 0.0%  
• LI: 0.1%  
• FY: 0%

**2021-2022**  
**Students Expelled**  
**Districtwide 0.2%**

• EL: 0.1%  
• LI: 0.2%  
• FY: 0.1%

2.6



MAINTAIN ALL SCHOOL  
FACILITIES IN GOOD REPAIR

**Baseline 2019-2020**  
**Facilities in Good**  
**Repair based on the**  
**Facilities Inspection**  
**Tool (FIT)**

• 100%

**2021-2022**  
**Facilities in Good**  
**Repair based on the**  
**Facilities Inspection**  
**Tool (FIT)**

• 93%

# Goal 3: Year 2 Metric Outcomes

English Learner (EL)  
Low-Income (LI)  
Foster Youth(FY)

3.1



MAINTAIN FULL IMPLEMENTATION  
OF FAMILY INVOLVEMENT IN  
DECISION MAKING

**Baseline 2020-2021**  
**District Progress in**  
**Building Capacity of**  
**and Supporting Family**  
**Members to Effectively**  
**Engage in Advisory**  
**Groups and**  
**Decision-Making**  
**Full Implementation**

**2021-2022**  
**District Progress in**  
**Building Capacity of**  
**and Supporting Family**  
**Members to Effectively**  
**Engage in Advisory**  
**Groups and**  
**Decision-Making**  
**Full Implementation**

3.2



INCREASE FAVORABLE RESPONSES  
REGARDING FAMILY-SCHOOL  
COMMUNICATION

**Baseline 2020-2021**  
**Family School**  
**Communication**  
**Percent Favorable**  
**Districtwide 71%**

**2022-2023**  
**Family School**  
**Communication**  
**Percent Favorable**  
**Districtwide 78%**  

- EL: 81%
- LI: 77%
- FY: \*

Data is suppressed if the  
student population is less  
than 11

3.3



INCREASE FAVORABLE RESPONSES  
REGARDING PARENT/FAMILY  
ENGAGEMENT


**Baseline 2020-2021**  
**Parent-Family**  
**Engagement**  
**Percent Favorable**  
**Districtwide 57%**

**2022-2023**  
**Parent-Family**  
**Engagement**  
**Percent Favorable**  
**Districtwide 63%**  

- EL: 65%
- LI: 62%
- FY: \*

Data is suppressed if  
the student population  
is less than 11

# Expenditure Update

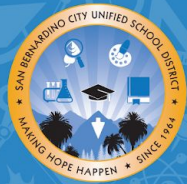
<p><b>April is month 10 out of 12</b></p> <p>Our Goal is to be at 10% or less remaining percentage</p> 		Adopted Budget	Remaining Balance	Remaining Percentage
	<b>Goal 1-</b> Academic Achievement	\$170.8m	\$17.4m	10%
	<b>Goal 2-</b> School Climate/Campus Environment	\$30.7m	\$2.3m	7%
	<b>Goal 3-</b> Student, Family, and Community Involvement and Support	\$10.8	\$1.4m	13%



The background of the slide is a light blue field filled with a repeating pattern of small, white, stylized icons representing various educational subjects: mathematics (3+2=, ABC, geometric shapes), science (microscope, beaker, atom, planet), art (paint palette, paintbrush), and general education (book, magnifying glass, clock, graduation cap).

# 2023-2024 Budget Information





# Governor Newsom's State Budget Proposal

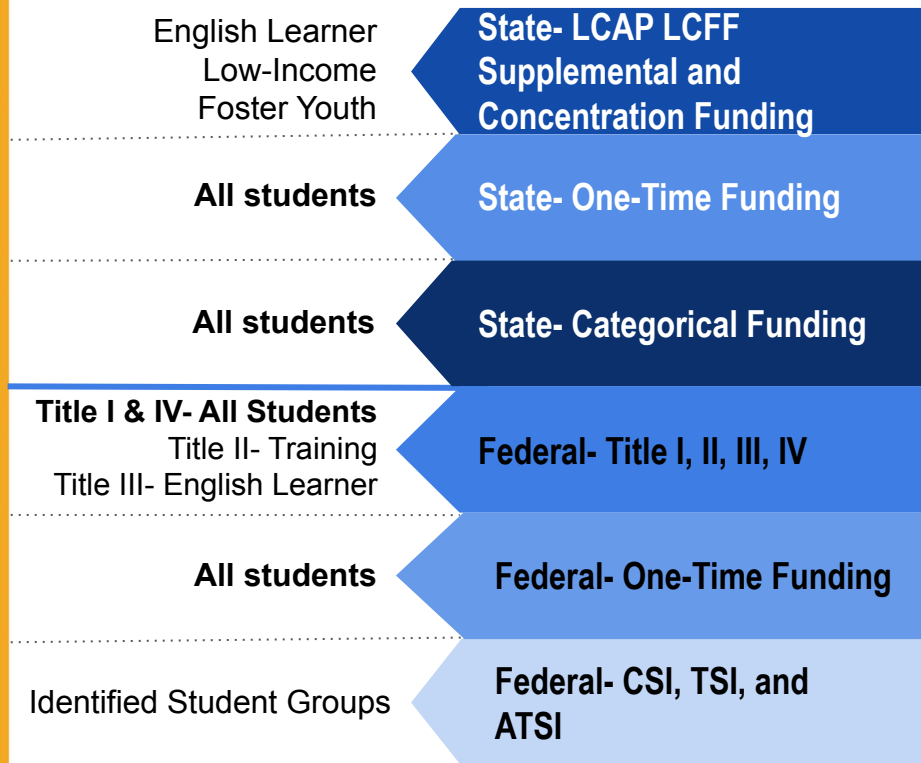
- Proposed State budget for next year is \$29.5 billion lower than this year
  - Slower economic growth, but not a recession
  - Revenue outlook is substantially different than the prior two years

Economy Factors that may affect the May Revision to the Governor's Budget Proposal:

- Unpredictability of tax revenue due to the tax deadline extension
- Unemployment rates have increased slightly
- The Federal Reserve raised the interest rate
- Recent turmoil in the banking sector (collapse of Silicon Valley Bank, followed by Signature Bank, and struggles with Credit Suisse and First Republic Bank)



## All Students    State- Base LCFF Funding



Expenditures can be funded  
from one source, or from  
multiple sources.



Major Categories within District Plans	Learning Recovery Emergency Block Grant	Arts, Music, and Instructional Material Block Grant	Federal Funding	LCAP
Standards-aligned professional development and instructional materials	✓	✓	✓	<b>Actions:</b> Low-Income Student Achievement, English Learner Student Achievement, Professional Development, Foster Youth, Technology
Enrichment, Supplemental Programs, and Integrated Supports for Pupils	✓	✓	✓	<b>Actions:</b> Advanced Learners, IB, AVID, College and Career Readiness, Academic Competitions, VAPA, Cal-SAFE, Transportation, Library Aides, Cadet Corps, Innovation Grants
Decrease or Stabilize Staff-to-Pupil Ratios	✓	✗	✓	<b>Actions:</b> Magnet Programs, Low-Income Student Achievement, Smaller Class Sizes, Recruitment and Retention of Experienced Staff, Focus Schools
Early Education and Intervention	✓	✓	✓	<b>Actions:</b> Early Childhood Education, Tutoring, Access and Opportunities, Focus Schools, Intervention and Acceleration
Tutoring, Support for Credit Deficient Students, and Increase/Stabilize Instructional Time	✓	✓	✓	<b>Actions:</b> Tutoring, Access and Opportunities, Academic Direct Student Support, Intervention and Acceleration, Foster Youth, Focus Schools
Materials, services, and personnel to improve school climate/environment and student wellness	✗	✓	✓	<b>Actions:</b> Health Services, Counselors, Crossing Guards, Attendance Improvement, Youth Court
Student, Family, and Community Involvement and Support	✗	✗	✓	<b>Actions:</b> Family Engagement, Communications, Community Engagement, Student Advisory Council, Bilingual Support
COVID-19-related materials, supplies, and equipment	✗	✓	✓	<b>Actions:</b> N/A
Operational costs	✗	✓	✗	<b>Actions:</b> N/A

The background of the slide is a light blue field filled with a repeating pattern of small, white, stylized icons representing various educational fields: mathematics (3+2=, ABC, protractor, ruler), science (microscope, beaker, atom, magnifying glass), art (paint palette, paintbrush), and general education (book, graduation cap, clock, bus, globe, pencil, paper airplane).

**We need your input!**







# Educational Partner Input

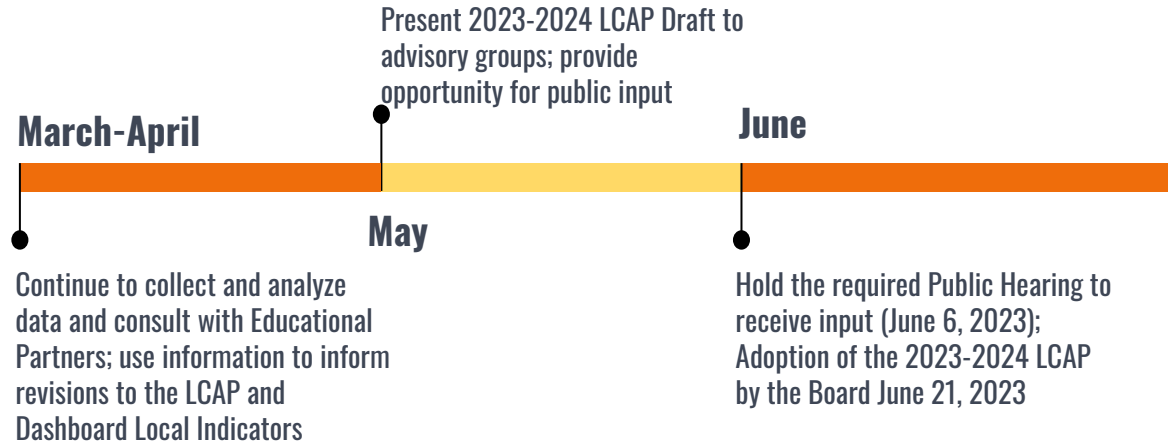
- Educational Partner input survey April 6 through April 23
- Input will be used to inform the 2023-2024 LCAP
- Please share with other Educational Partners that might not be at this meeting



<http://bit.ly/3zEuDIX>



# LCAP Development Timeline





# LOCAL CONTROL AND ACCOUNTABILITY PLAN (LCAP)



## Community Meeting



### Mid-Year Update

Thurs  
January 19, 2023

5:30pm - 7:00pm

777 N. F St. San  
Bernardino,  
CA 92410

### Director's Presentations and Input Gathering

Tuesday  
March 14, 2023

5:30pm - 7:00pm

4030 Georgia Blvd.  
San Bernardino,  
CA 92407

### Draft Review and Questions for the Superintendent

Tuesday,  
May 23rd, 2023

5:30pm - 7:00pm

777 N. F St. San  
Bernardino,  
CA 92410

**Childcare and Interpretation Services are available.**

Participation is also available via Zoom.

Registration is required.

**REGISTER AT: <https://sbcusd.com/lcapmeeting>**



For more information, please contact  
Categorical Programs: (909) 473-2064



# PLAN DE RENDICIÓN DE CUENTAS Y CONTROL LOCAL (LCAP)



## Reunión comunitaria



### Informe bianual

Jueves, 26 de febrero  
de 2023

5:30pm - 7:00pm

777 N. F St.  
San Bernardino,  
CA 92410

### Presentación del director y recepción de opiniones

Martes, 14 de marzo  
de 2023

5:30pm - 7:00pm

4030 Georgia Blvd.  
San Bernardino,  
CA 92407

### Repaso del borrador y preguntas para el superintendente

Martes, 23 de  
mayo de 2023

5:30pm - 7:00pm

777 N. F St.  
San Bernardino,  
CA 92410

**Servicio de guardería e interpretación disponibles**

Participación disponible también a través de Zoom.

Se requiere inscripción.

**INSCRÍBASE EN: <https://sbcusd.com/lcapmeeting>**



Para más información comuníquese con  
Programas por Categorías: (909) 473-2064



# Thank you!

