

Lowndes County Public Schools

Return to Instruction 2021-2022

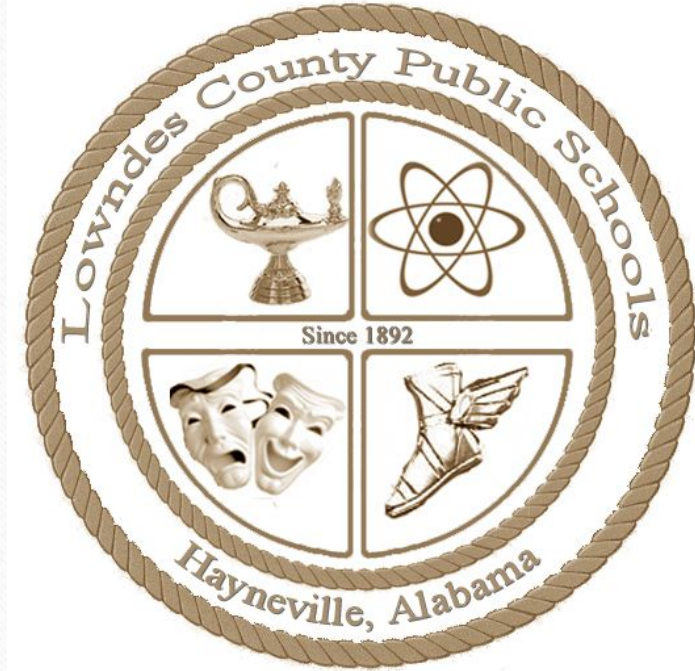
Updated January 5, 2022

Lowndes County Public Schools

Jason D. Burroughs, Superintendent

Lowndes County Board of Education

- Ben Davis
- Donald Carter
- Steve Foster, Vice President
- Robert Grant
- Travis Rogers, President



Lowndes County Public Schools

Vision Statement: United in excellence to empower, engage, and educate while ***creating pathways to success.***

Mission Statement: The mission of the Lowndes County Public Schools, in partnership with all stakeholders, is to prepare one student at a time to be culturally aware and ***fierce competitors on the economic world stage*** by providing rigorous and relevant instruction in a safe environment with high expectations.

Special Appreciation

Special appreciation is expressed to the many educators, parents, and community members who contributed to the development of this document.

**LOWNDES COUNTY PUBLIC SCHOOLS
ADOPTED 2021-2022 SCHOLASTIC CALENDAR**

Reporting Day for Twelve-Month Employees	Thursday, July 1, 2021
Independence Day (Observed)	Monday, July 5, 2021
Reporting Day for Eleven-Month Employees	Tuesday, July 13, 2021
Reporting Day for Ten-Month Employees	Tuesday, July 27, 2021
Reporting Day for Nine-Month Employees	Tuesday, August 10, 2021
Staff Development/Work Days for Employees	Tuesday-Friday, August 10-13, 2021
Classes Begin	Monday, August 16, 2021
Labor Day	Monday, September 6, 2021
Attendance Reporting Period	Tuesday, September 7 - Monday, October 4, 2021
Professional Development Day For All Employees/Parenting Day	Monday, October 11, 2021
End of 1st 40-Day Period for Transportation Reporting	Thursday, October 12, 2021
Veterans' Day	Thursday, November 11, 2021
Thanksgiving Break*	Monday-Friday, November 22-26, 2021
Winter Break	Monday, December 20, 2021-Friday, December 31, 2021
Dr. Martin Luther King, Jr. Day	Monday, January 17, 2022
Presidents' Day (Professional Development Day For All Employees)	Monday, February 21, 2022
Spring Break*	Monday-Friday, March 21-25, 2022
Inclement Weather Makeup Day	Friday, April 15, 2022
The Calhoun School's Commencement Exercise	Thursday, May 19, 2022
Central High School's Commencement Exercise	Saturday, May 21, 2022
Memorial Day	Monday, May 30, 2022
Classes End	Tuesday, May 31, 2022
Last Day for Nine-Month Employees	Wednesday, June 1, 2022
Last Day for Ten-Month Employees	Wednesday, June 15, 2022
Last Day for Eleven-Month Employees	Wednesday, June 29, 2022
Last Day for Twelve-Month Employees	Thursday, June 30, 2022

*Twelve-month employees do not observe Monday - Tuesday, November 22-23, 2021, and Monday-Friday, March 21-25, 2022.

Student Holidays

Observances	Dates
Labor Day	September 6, 2021
Professional Development Day For All Employees/Parenting Day	October 11, 2021
Veterans' Day	November 11, 2021
Thanksgiving Break	November 22-26, 2021
Winter Break	December 20-31, 2021
Dr. Martin Luther King, Jr. Day	January 17, 2022
Presidents' Day	February 21, 2022
Spring Break	March 21-25, 2022
Inclement Weather Makeup Day	April 15, 2022
Memorial Day	May 30, 2022

Attendance Reporting

Periods	Dates	Days
1	August 16, 2021 - September 13, 2021	20
2	September 14, 2021 - October 12, 2021	20
3	October 13, 2021 - November 9, 2021	20
4	November 10, 2021 - December 15, 2021	20
5	December 16, 2021 - January 27, 2022	20
6	January 28, 2022 - February 25, 2022	20
7	February 28, 2022 - April 1, 2022	20
8	April 4, 2022 - May 2, 2022	20
9	May 3, 2022 - May 31, 2022	20

Grading Periods/Report Card Issuances

First Period	August 16, 2021 - October 19, 2021
Report Cards	October 28, 2021
Second Period	October 20, 2021 - January 12, 2022
Report Cards	January 20, 2022
Third Period	January 13, 2022 - March 18, 2022
Report Cards	March 31, 2022
Fourth Period	March 28, 2022 - May 31, 2022
Report Cards	May 31, 2022

Disclaimer

The information provided in this document does not, and is not intended to, constitute legal advice. All information, content, and materials available in this document may not constitute the most current legal regulations. This document contains links to other third party websites. Such links are only for the convenience of the user. The Lowndes County Public Schools does not recommend or endorse the contents of the third party sites. All liability with respect to action taken or not taken based on the contents of this document are hereby expressed disclaimed. The content in this document is provided “as is.” No representations are made that the content is error-free. The document is not an exhaustive list of every action that the Lowndes County Public Schools will need to return to instruction. Guidance by the Alabama Department of Education is not mandated. The Lowndes County Public Schools has the authority and flexibility to meet their individual needs and be responsive to the community.

2021-2022 School Year

It is the intention of the Lowndes County Public Schools to return to instruction for the 2021-2022. All students are expected to return to traditional in-person learning. The first day of school is Monday, August 16, 2021.

2021-2022 School Year

Safety guidance offered by the Centers of Disease Control(CDC), the Alabama Department of Public Health(ADPH), and the Alabama State Department of of Education will be followed to mitigate health concerns.

COVID-19 Prevention Strategies

Return to School 2021-2022

Home Screening for Students

COVID-19 screening begins at home. We ask that parents keep children home when they have the following symptoms:

- Fever or chills
- Cough
- Shortness of breath or difficulty breathing
- Fatigue
- Muscle or body aches
- No Taste
- Headache
- Sore throat
- Congestion or runny nose
- Nausea
- Vomiting
- Diarrhea
- No Smell

Contact your healthcare provider to determine if your child needs to be tested.

<https://www.cdc.gov/coronavirus/2019-ncov/symptoms-testing/symptoms.html>

Symptoms of Coronavirus (COVID-19)

Know the symptoms of COVID-19, which can include the following:



Symptoms can range from mild to severe illness, and appear 2–14 days after you are exposed to the virus that causes COVID-19.

- We ask that parents keep children home when they have these symptoms.
- School personnel should stay home if they have these symptoms.
- Contact a healthcare provider to determine if testing is needed.

Essential Elements of Safe K-12 Schools for In-Person Instruction

- Universal and Correct use of Masks
- Physical Distancing
- Handwashing/Respiratory Etiquette
- Cleaning and Maintaining Healthy Facilities
- Contact Tracing, Isolation, and Quarantine

Face Coverings-Required



Physical Distancing in Classrooms

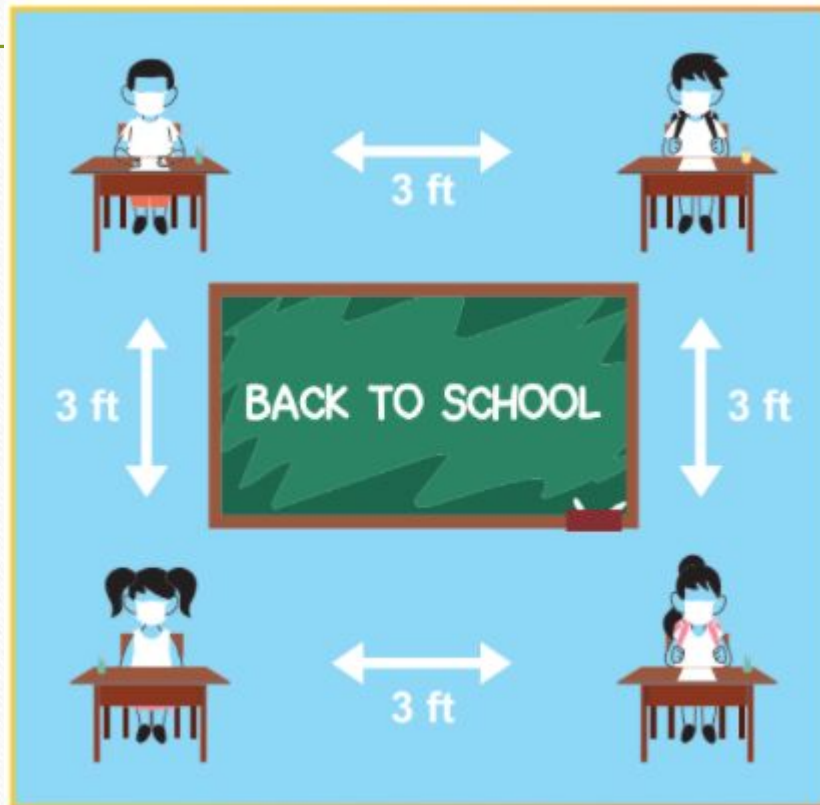
Head Start/Elementary Classrooms

- Maintain at least 3 feet apart

Middle/High School Classrooms

- Maintain at least 3 feet in areas of low/moderate risk
- Maintain at least 6 feet in areas of high/very high risk

Physical Distancing in Classrooms



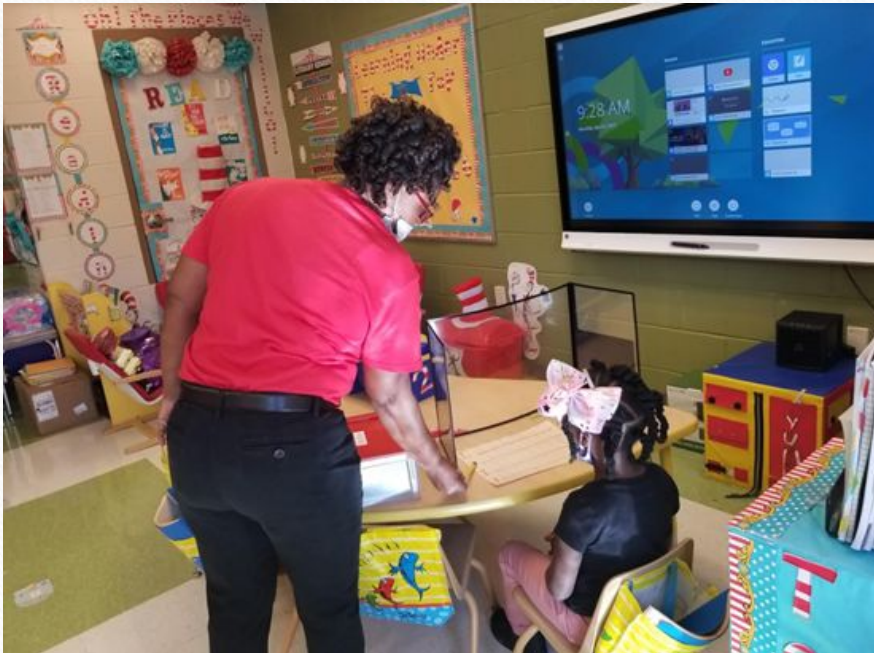
Physical Distancing in Other Areas

- Maintain 6 feet of distance in the following situations
 - Between adults
 - When masks cannot be worn, such as when eating
 - In common areas (lobbies, hallways, gyms, cafeterias, etc.)
 - Large Gatherings

Physical Distancing in Other Areas



Physical Distancing with Plexiglass Shields



Hand Washing/ Sanitizer Stations

- Bathrooms will have soap and water.
- Sanitizer stations are set up throughout the schools.
- Classrooms will have sanitizer available.



Respiratory Etiquette



Cleaning Checklist

- All dirty surfaces will be cleaned with soap and water as needed.
- Appropriate cleaning and/or disinfecting will be done between and after classes.
- Deep cleaning and/or disinfecting will be completed one day each week.
- A designated point by point checklist will be used by custodians daily to ensure efficiency.

Procedures for Cleaning/ Disinfecting Schools

- **How to Clean and Disinfect Classrooms and Common Areas (per the CDC)**
<https://www.cdc.gov/coronavirus/2019-ncov/community/organizations/cleaning-disinfection.html>
- Specifications for teachers (classroom cleaning), custodians (common area cleaning), and cafeteria staff (cafeteria and kitchen area) upon our return prior to the students returning:

Procedures for Cleaning Schools

- **Perform routine environmental cleaning (Daily after the return of students)**

- Routinely clean frequently touched surfaces (e.g., doorknobs, light switches, countertops) with the cleaners typically used. Use all cleaning products according to the directions on the label.
- Provide disposable wipes so that commonly used surfaces (e.g., keyboards, desks, remote controls) can be wiped down by students, staff, and faculty before each use.

Procedures for Disinfecting Schools

- **For disinfection,** diluted household bleach solutions, alcohol solutions with at least 60% alcohol, and most common EPA-registered household disinfectants will be used.
- **Common Areas/Classrooms will be disinfected frequently.**

Temperature Checks

- All persons entering LCBOE properties will have their temperature checked daily by the school nurse, principal's designee, or director's designee.
- No adult with a temperature of 100.4 degrees Fahrenheit or greater will remain on LCBOE properties.
- Students with a temperature of 100.4 degrees Fahrenheit will be isolated until parents pick up.



Air Purifiers

- Air purifiers will be in all classrooms to clean air indoors and to help maintain a healthy environment.



Campus Visitation

- Visitors will not be permitted beyond the designated area until temperature check is completed.
- Visitors must wear masks to enter the school building.
- Visitors must sanitize hands upon entering the building.
- Visitors will maintain a social distance of 6 feet between individuals.
- Parent/teacher conferences must be scheduled in advance and be approved by the school principal.
- Virtual parent/teacher conferences can still be conducted.

Arrival Procedures for In Person Instruction

- Parent drop off will not be allowed on campus until 6:45 AM
- Students will enter through a designated entrance.
- The temperature of the student will be taken prior to entry.
- If the child has a fever (100.4 degrees F or greater) or reports COVID-19 symptoms, the student will report immediately to the quarantine room located in the nurse's office and the parent will be called for immediate pick-up.
- Each student will immediately wash or sanitize their hands.
 - Parents should notify the school if their child is allergic to any form of common ingredients of hand sanitizer.

Water/Water Fountains

- It is recommended that parents purchase each child a personal water bottle and write the child's name in permanent ink.
- The water bottle should be filled daily from home and maintained on the child's proximity during the school day. There will be no sharing of water bottles.
- Water will be provided to students.
- Water fountains/water coolers can be used with cups/water bottles with adult supervision when there is a shortage of bottled water.

Restroom Use

- Students will use the assigned restroom nearest their classroom to socially track students. It is highly advised that students only used their assigned restroom(s).
- Soap and paper towel/tissue will be available
- Teachers will supervise students and limit the number of students in restrooms at any given time.

Lockers

- The use of lockers will continue to be a school based decision.
- If used, each student will maintain their individual locker.
- Lockers will not be shared.
- Lockers will be sanitized with common contact surfaces.

Signage

- Picture signs indicating the following will be strategically placed on LCBOE properties:
 - Handwashing
 - Social Distancing
 - One-way
 - Face Coverings
 - Symptoms- fever, cough, etc.
 - COVID-19 Feeling Ill

PREVENTIVE MEASURES FOR COVID-19



WASH YOUR HANDS

With soap and water for at least 20 sec., or use a hand sanitizer that contains at least 60% alcohol.



AVOID CLOSE CONTACT

With people who are sick or put distance between yourself and other people if COVID-19 is spreading in your community.



USE FACE MASKS

If you are sick or you are caring for someone who is sick and they are not able to wear a facemask.



COVER YOUR COUGH/SNEEZE

Cover your mouth and nose with a tissue when you cough or sneeze or use the inside of your elbow.



CLEAN AND DISINFECT OFTEN

Clean AND disinfect frequently touched surfaces daily.

Dealing with COVID-19

Return to School 2021-2022

Person with COVID-19

- All employees or students who are diagnosed with COVID-19 shall immediately notify their immediate supervisors or principals. The immediate supervisors or principals shall inform the Office of the Superintendent of the notification.
- Individuals who test positive for or are diagnosed with COVID-19 must stay home for 10 days following the onset of symptoms or the positive test result, be 24 hours without fever or fever reducing medications, and experience improvement before returning from isolation.
- Employees and students will provide medical documents to their immediate supervisors and principals, who will forward the documentation to the Office of Superintendent.

Note: The school district is not following the 5 day reduced quarantine period for positive cases at this time.

Person with COVID-19 contd.

- The principal updates the spreadsheet in Google.
- The lead nurse reports to ADPH on a weekly basis.
- <https://www.alabamapublichealth.gov/covid19/healthcare.html>

Student with COVID-19 Symptoms

- Students with a temperature of 100.4 degrees Fahrenheit at school will be placed in a designated area of quarantine with a facial covering in place until picked up by a parent.
- Students who are experiencing COVID-19 symptoms at school will be placed in a designated area of quarantine with a facial covering in place until picked up by a parent.
- Nurses will wear N95 masks and other Person Protective Equipment(gloves, gowns, lab coats, etc.) when caring for these students.

Student with COVID-19 Symptoms

- Parents and/or designated contact/transporter will be called to transport the child home.
- Student will self quarantine.
- Student is advised to see their healthcare provider to determine if student has COVID-19 or other noncommunicable disease.
- If it is determined that the student has another illness, the student can return with a physician's release.

Attachment E: COVID-19 Student Screening Tool



Student Name: _____

Screening Date: _____

COVID-19 Student Screening Tool

This screening tool can be used in the event a student becomes ill or as a pre-screening tool for parents or school staff to determine if a student or staff member should be sent home and when they may return to school.

1. Does this student have any of the following symptoms? If yes, date first symptom began: ____/____/____

- ☐ Shortness of breath or difficulty breathing
- ☐ Cough
- ☐ New loss of taste or smell
- ☐ Fever
- ☐ Chills
- ☐ Muscle or body aches
- ☐ Nausea or vomiting
- ☐ Diarrhea
- ☐ Headache
- ☐ Sore throat
- ☐ Congestion or runny nose

If a student has any of these symptoms and they cannot be attributed to another diagnosis, the student may have COVID-19. The student should be sent home to be medically assessed by the student's health care provider. Follow exclusion criteria for alternate diagnosis and isolation criteria for a diagnosis of COVID-19.

2. Has this student been diagnosed with or tested positive for COVID-19 in the last 14 days? If yes, date: ____/____/____

- ☐ Yes If a student is diagnosed by their healthcare provider with COVID-19 based on a test and/or their symptoms, they should not be at school and should stay at home until they meet the criteria below. If a student has been tested, but has not received their result, the student should remain home until the result is known and further guidance is received.
- ☐ No

Returning to School after a COVID-19 Diagnosis or Positive Test

A student can return to school when a family member can ensure that they can answer YES to ALL three questions:

- ☐ Has it been at least 10 days since the student first had symptoms?
- ☐ Has it been at least 24 hours since the student had a fever (without using fever-reducing medicine)?
- ☐ Has there been symptom improvement, including cough and shortness of breath?

If a student has been diagnosed with COVID-19 but does not have symptoms, they should remain out of school until 10 days have passed since the date of their first positive COVID 19 diagnostic test, assuming they have not subsequently developed symptoms since their positive test.

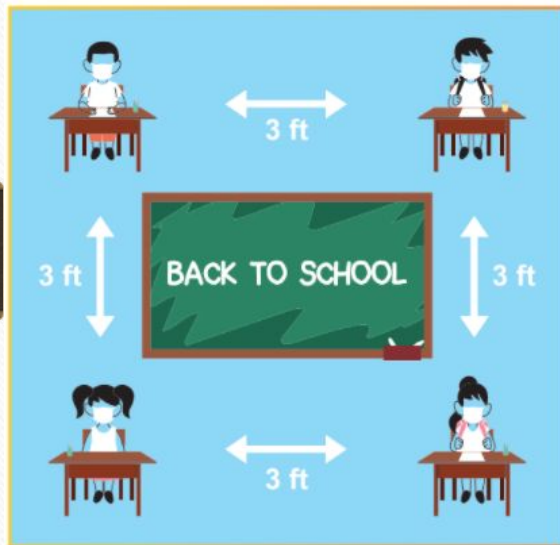
Return to School if not suspected COVID and not a contact to COVID:

A student can return to school, following normal school policies, if they receive confirmation of an alternative diagnosis from a healthcare provider that would explain the COVID 19 like symptom (s), once there is no fever without the use of fever reducing medication and they have felt well for 24 hours.

Statement for Return to school from healthcare provider: This patient does not appear to have COVID 19 at the time of evaluation. This patient can return to school and continue to follow school guidelines for the school system.

- Use this screening tool when in doubt
- Emailed to principals and directors on October 1, 2021

Student Exposure to COVID-19



When masks are properly worn by both students and the recommended CDC guidelines are followed for social distancing, no quarantine is required when a student has been exposed to COVID-19.

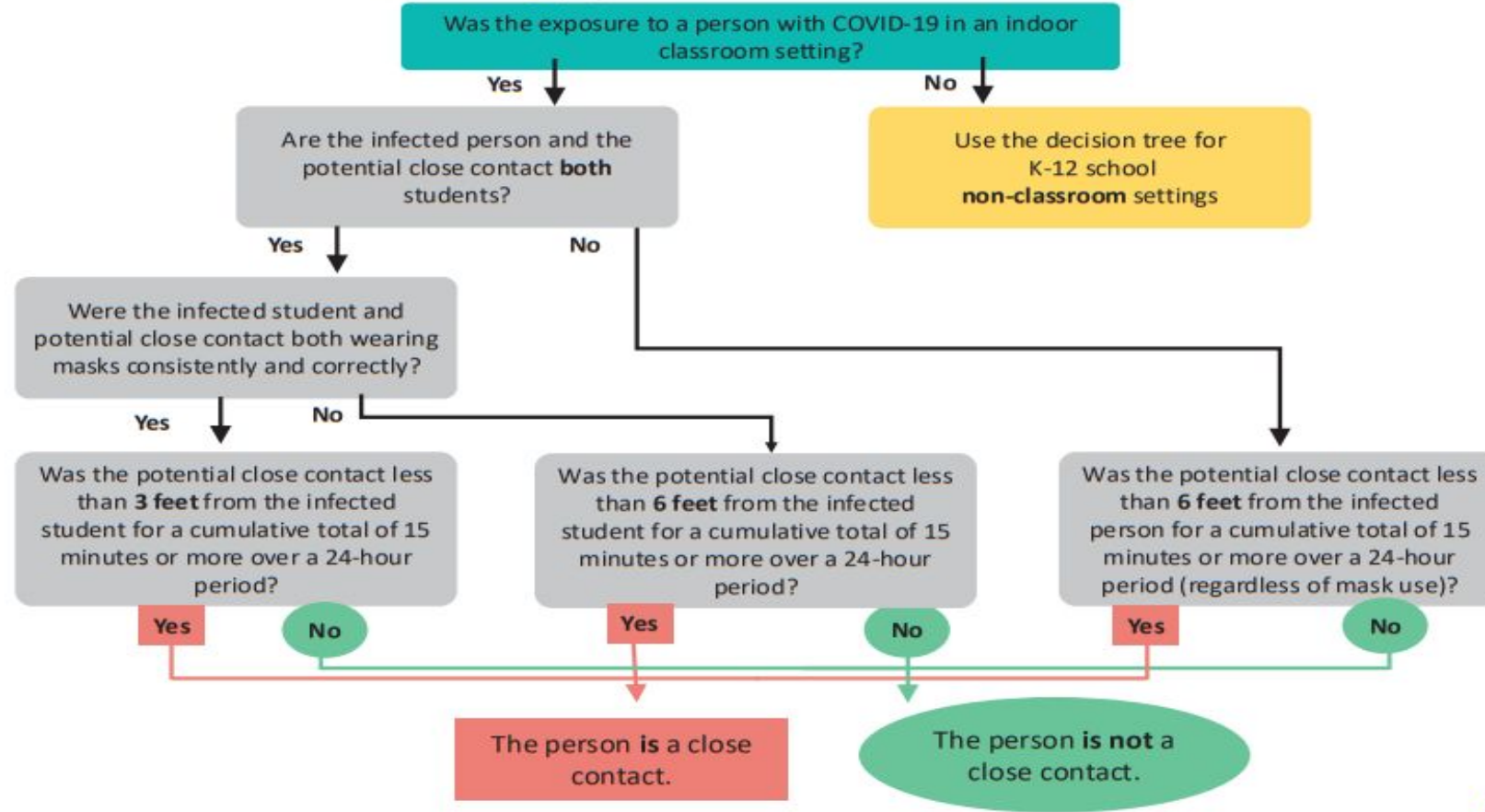


Close Contact- Classroom Setting

- In the K-12 indoor classroom setting, the close contact definition excludes students who were 3 feet or more (but within 6 feet) of an infected student if the following were in place:
 - both students were engaged in the consistent and correct use of well fitted masks
 - other K-12 prevention strategies (physical distancing, increased ventilation, universal and correct mask use) were in place

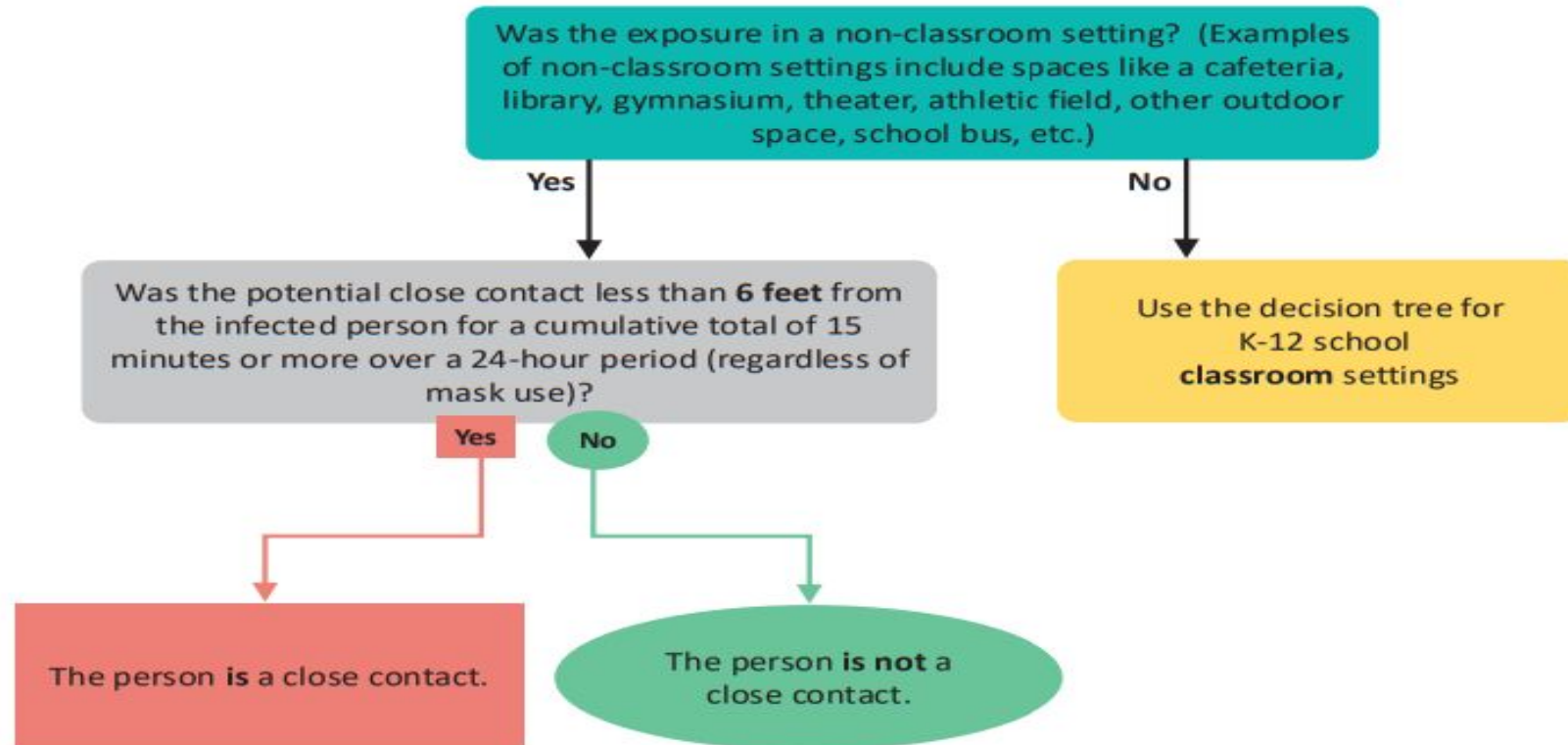
Decision Tree for Identifying COVID-19 Close Contacts in K-12 School INDOOR CLASSROOM Settings

Note: Complete this decision tree for students and adults in an indoor classroom setting who were within 6 feet of the infected person starting 2 days prior to symptom onset or positive test. If the infected person is not showing symptoms, use the date the test was collected.



Decision Tree for Identifying COVID-19 Close Contacts in K-12 School NON-CLASSROOM Settings

Note: Complete this decision tree for anyone in a non-classroom setting who was within 6 feet of the infected person starting 2 days prior to symptom onset or positive test. If the infected person is not showing symptoms, use the date the test was collected.



Close Contact for Staff, Parents, and Guardians

- Unvaccinated individuals who are identified as close contact and do not meet the K-12 indoor classroom student criteria must be sent home.
- Individuals vaccinated more than 6 months ago (Pfizer/Moderna)
- Individuals vaccinated more than 2 months ago (Johnson and Johnson)

Self-quarantine away from the school for 5 days after the last exposure. the individual may return on day 6 if they are symptom free and receive a negative COVID-19 PCR or antigen test on day 5. Home COVID tests are not acceptable.

Close Contacts

Exceptions to Quarantines

- Asymptomatic close contacts who tested positive for COVID-19 and are fully recovered in the prior 3 months do not need to be sent home unless they develop symptoms.
- Asymptomatic close contacts who have received all recommended vaccine doses, including boosters and additional primary shots.
- Asymptomatic close contacts who were vaccinated less than 6 months ago (Pfizer/Moderna)
- Asymptomatic close contacts who were vaccinated less than 2 months ago (Johnson and Johnson)

Attachment F: Delta Variant – What Should Schools Do?



Student Name: _____

Date: _____

COVID-19 Exposure Notification for Parents and Guardians

Your student may have been exposed to someone diagnosed with or suspected to have COVID-19. Date of exposure: ____/____/____

The Centers for Disease Prevention and Control (CDC) defines a close contact as someone who was within 6 feet of an infected person for a cumulative total of 15 minutes or more over a 24-hour period (for example, three individual 5-minute exposures for a total of 15 minutes). An infected person can spread SARS-CoV-2 starting from 2 days before they have any symptoms (or, for asymptomatic patients, 2 days before the positive specimen collection date), until they meet criteria for discontinuing home isolation.

Symptoms of COVID 19 include:

Fever, cough, shortness of breath, difficulty breathing, fatigue, muscle or body aches, headache, new loss of taste or smell, sore throat, congestion or runny nose, nausea, vomiting, or diarrhea.

In the K-12 indoor classroom setting, the close contact definition **excludes** students who were within 3 to 6 feet of an infected student where

- both students were engaged in consistent and correct use of well-fitting masks; and
- other K-12 school prevention strategies (such as universal and correct mask use, physical distancing, increased ventilation) were in place in the K-12 school setting.

Except in certain circumstances, people who have been in close contact with someone who has COVID-19 should stay at home. However, the following people with recent exposure may NOT need to remain at home:

- People who have been fully vaccinated do not have to quarantine unless they develop symptoms but should be tested 3-5 days after exposure.
- People who were previously diagnosed with COVID-19 within the last three months

If your student does not meet the exception noted above for K-12 students, or has not been vaccinated or has not been previously diagnosed with COVID-19 in the last three months see below:

Home quarantine update REVISED 9/13/2021:

If your student remains without symptoms during home quarantine:

14-day home quarantine: The standard recommended home quarantine after exposure to COVID 19 remains 14 days. In the K-12 school setting, options for home quarantine can be considered if there is not ongoing exposure to COVID 19 in the household setting or other potential ongoing exposure. Ongoing exposure means being in contact with an infected person by sharing the same living space, sleeping with an infected person, eating with an infected person, or any other circumstances where persons are closely exposed to one another.

10 day home quarantine: 10 day home quarantine is allowed if there is no ongoing exposure (as outlined above), the quarantined person has not had symptoms during the quarantine, and the quarantined persons can symptom monitor, follow masking, and six feet of social distancing.

7 day home quarantine alternative: 7 day home quarantine is allowed as an alternative in schools if there is no ongoing exposure (as outlined above), the quarantined person has no symptoms during the quarantine, the quarantined person has a negative COVID-19 test (molecular or antigen) result which has to be collected NOT BEFORE day 5 of the quarantine period, and the quarantined person can symptom monitor, follow masking, and six feet of social distancing.

Home Based-Tests: Home-based tests are not accepted for the 7-day home quarantine. If a person has a positive home-based test, they are considered to be a COVID 19 case and should follow Isolation and Exclusion for the full 10-day period.

If your student becomes symptomatic during home quarantine, see below:

Have them evaluated by their healthcare provider/doctor and report to the school nurse the results and outcome of the medical evaluation. Cases (includes symptomatic Close Contacts):

Must be isolated for at least 10* days after symptoms first appeared and at least 24 hours since resolution of fever (without the use of fever-reducing medications) and other symptoms have improved.

- Use this document to assist in notifying parents.
- Parents must be called.
- This document can also be sent home with student.
- A copy of this document was emailed to principals/directors on October 1, 2021.

WHAT HAPPENED	VACCINATION STATUS	SHOULD I STAY HOME	WHEN CAN I RETURN	SHOULD I GET TESTED	SHOULD I WEAR A MASK WHEN I RETURN
Tested positive	Vaccinated	Yes, 10 days	Day 11-No symptoms	Retesting not required	YES
Tested positive	Unvaccinated	Yes, 10 days	Day 11-No symptoms	Retesting not required	YES
Exposed to COVID	Vaccinated and boosted	No, unless you have symptoms	N/A	Yes- 5 days after exposure or if you develop symptoms	YES
Exposed to COVID	Vaccinated less than 6 months (Pfizer and Moderna)	No, unless you have symptoms	N/A	Yes- 5 days after exposure or if you develop symptoms	YES
Exposed to COVID	Vaccinated less than 2 months (J & J)	No, unless you have symptoms	N/A	Yes- 5 days after exposure or if you develop symptoms	YES
Exposed to COVID	Vaccinated more than 6 months (Pfizer and Moderna)	Yes for 5 days	Day 6 if no symptoms and negative test	Yes- 5 days after exposure or if you develop symptoms	YES
Exposed to COVID	Vaccinated more than 2 months (J & J)	Yes for 5 days	Day 6 if no symptoms and negative test	Yes- 5 days after exposure or if you develop symptoms	YES
Exposed to COVID	Unvaccinated	Yes for 5 days	Day 6 if no symptoms and negative test	Yes- 5 days after exposure or if you develop symptoms	YES

Curriculum and Instruction

Return to School 2021-2022

Curriculum Updates

- New K – 12 Mathematics Course of Study Standards will be used.
- New Mathematics Textbook – Envision Math
- New K – 12 English Language Arts Course of Study Standards will be used.
- Alabama Literacy Act requires all 3rd grade students who are not proficient in reading to be retained.

Instructional Services

Students return to school Monday, August 16, 2021

Classroom instruction - 7:30 a.m. - 3:00 p.m.

All students will return to in-person instruction

Students will be required to wear uniforms

Students will adhere to the dress code requirements in the Student Handbook.

Virtual Options

- Students in Grades 9-12: ACCESS or Edgenuity*
- Students in Grade 3-8: Edgenuity or Acellus*
- Students in Grades K-2: Acellus*

*Students must meet specified criteria to be enrolled in virtual option or have extenuating circumstances. Contact the school for information.

Academic Programs

- Alabama Reading Initiative (ARI)
- Sonday System
- AIMSWeb Plus
- Alabama Math and Science Initiative (AMSTI)
- ACT Plus Writing
- WorkKeys
- Trenholm Technical College Dual Enrollment
- Response to Intervention (RtI)
- STAR Reading
- Accelerated Reader (AR)
- Edgenuity
- USA TestPrep
- Read 180
- Career and Technical Education
- Wallace Community College Dual Enrollment

Classroom Expectations

Students will be required to wear and follow correct use of facemasks.

Students will be required to follow safe distancing practices.



Career Technical Courses

Return to School 2021-2022

2021-2022 CTE Course Offerings

- Welding
- Masonry
- Ag Science
- Business
- Accounting
- Career Tech
- Computer Science (Available for students in grades 7-12)
- JROTC (taught on high school campuses)

Dual Enrollment

Return to School 2021-2022

Dual Enrollment

- Dual enrollment allows high school students to earn college credit while still being enrolled in high school. Students earn both high school and college credit simultaneously
- School system pays for tuition

Dual Enrollment Opportunities

Wallace

- Welding
- Masonry
- Music 101
- Government
- US History
- English 101

Trenholm

- Medical Assisting Technology
- Automotive Services
- Child and Human Development

Assessments

Return to School 2021-2022

AIMSWEB

Aimswweb Plus will be given to students in grades K-5 three times a year(beginning, middle and end).

Aimswweb will be used to do the following:

1. Screen and monitor the reading and math skills of students
2. Identify students at risk of academic failure to enable early intervention
3. Systematically measure and monitor student performance to determine the effectiveness of instruction and intervention efforts

iReady

- iReady will be used as a benchmark assessment for students in grades K-12.
- iReady will be given at the beginning, middle, and end of the school year.
- iReady will pinpoint students' strengths and what they need to work on to reach(or exceed) grade-level proficiency.
- iReady learning will be used to deliver instructional pathways that are guided by iReady assessment data.

AlaKIDS

- Kindergarten students will be assessed using AlaKIDS at the beginning of the school year.
- It assesses language development, mathematics, literacy, cognitive, physical, and social emotional skills.
- It will provide the kindergarten teacher with needed information to immediately meet needs of the students.

Standardized Assessments

Return to School 2021-2022

Pre-ACT

- Administered to students in 10th grade in the fall of the school year
- Assesses the students' college readiness skills and provides the following information
 - Early practice for the ACT test
 - A predicted ACT score
 - Identifies areas of strength and areas of focus prior to ACT

ACT with Writing

- Administered to students in the 11th grade during the spring semester
- Assesses high school students' readiness for college in english, mathematics, reading, science, and writing
- Exam used by most colleges and universities for entrance and scholarship opportunities
- Can be taken multiple times at ACT testing centers (Note: Students receive two vouchers to test at no cost at ACT testing centers)

ACT with Writing

College Readiness Benchmarks

- English- 18
- Mathematics- 22
- Reading- 22
- Science- 23

ACAP

- Online assessment
- Administered to students in grades 2-8 in the spring of the year
- Assesses math and English/language arts
- Students in grades 4, 6, and 8 will be administered an assessment in science
- Students in grades 4-8 will be administered a writing assessment
- Test items are aligned to the Alabama Course of Study

ACAP Alternate Assessment

- Administered to Special Education students whose Individualized Education Program (IEP) teams determine that the students will not participate in the regular student testing program

ACCESS

- Administered to English Language Learners
- Assesses English language proficiency
- Identifies students who may be candidates for English as a second language (ESL)

WorkKeys

- Administered to students in 12th grade during the fall and spring*
- Assesses foundational skills required for success in the workplace and helps measure the workplace skills that can affect job performance

*Seniors who meet benchmark requirements during the fall semester are not required to test in the spring semester

School Meals

Return to School 2021-2022

School Meals

- Students will wash their hands before reporting to pick up school meals.
- Students will maintain physical distancing of at least 6 feet while waiting on meals in line.
- Students will sanitize prior to picking up school meal at serving line.
- Students will maintain physical distancing of at least 6 feet while eating meals in the cafeteria or classroom.

School Meals

- All meals will be served by CNP staff.
- Schools with small populations can social distance and use the cafeteria for food service.
- Meals can be served through the grab and go method and consumed in the classrooms based on the conditions.
- Parents may not bring food to the school building.
- Students who bring meals from home will need to pack items that do not require heating or reheating.
- Snacks and food items are considered personal items. Parents may not purchase or donate for a class or group of students.

Student Transportation

Return to School 2021-2022

Students in the Danger Zone

Please note, loading/unloading has proven to be the most dangerous part of a bus ride for students. Drivers will not be required to do anything during the loading/unloading process that would prevent them from ensuring that students safely board and unboard the school bus. Therefore, bus drivers will not check temperatures as students board the buses.

Transportation

- Students will skip the first two seats after the bus driver.
- Students will wear face coverings on the bus. Bus drivers will give a face covering to students if they attempt to enter the bus without a face covering.
- Students should face forward and not lean across seats.
- Eating is prohibited.
- All students will have an assigned seat.
- Assigning students from the same household/families to a seat will be a priority.

Transportation Continued

- Drivers will wear face coverings.
- The driver will disinfect common touch points inside the bus between routes and after each route.
 - Areas of attention: Seats, handrails, driver controls, and front leading edge of entrance doors

Extracurricular Activities

Return to School 2021-2022

Athletics

- All sports/extracurricular activities will be available for students.
- Schools must declare for participation for athletics.
- Students must meet eligibility criteria set by the Alabama High School Athletic Association (AHSAA).
- Best practices by the AHSAA, ADPH and CDC will be followed.
- Limited capacity seating may be in place for indoor sports, depending on the risk factor for COVID-19.
- A guide will be provided prior to sporting events from each school.

Afterschool Programs

Return to School 2021-2022

Tutoring

- Mondays- Thursdays for grades K-8
- 3:00 PM until 3:30 PM- Afterschool snacks provided
- 3:30 PM until 5:30 PM- Tutoring Services Provided
- 5:30 PM- Departure from Tutoring

Transportation will be provided.

Summer Programs for 2022

Reading Camps

- Hosted at All Elementary Schools
- Grades K-3
- Month of June
- 8:30 AM until 12:30 PM
- This program is targeted for students who are not reading on grade level.

Summer Bridge

- Hosted at the middle schools
- Grades K-8
- Month of June
- 8:30 AM until 12:30 PM
- This program will work on reading and math standards for the upcoming school year. In addition, students will be provided with enrichment opportunities.

Credit Recovery

- Students in grades 9-12 are eligible to apply for Credit Recovery if the final grade earned in a course required for graduation is 40 or higher.
- Students will retake the standards that have not been mastered.
- The school site(s) will be determined in the spring.

Summer School

- Month of June
- 8:30 AM until 3:00 PM
- This program is for students in grades 6-8 who did not pass a class or for students in grades 9-12 who do not qualify for Credit Recovery.
- Students retake the entire course that was passed.
- The school site(s) will be determined in the spring.

Summer Youth Employment

- Employment for the month of June and July
- Students ages 16 and older
- Must have recommendations from the high school
- Must have a valid state ID, social security card, and bank account for direct deposit
- Must be selected by Director of Operations

Summer Camps

- Varies from Year to Year (Ex. Minority Law and Research Institute, Forestry Camp, etc.)
- Available to students based on select criteria from various colleges and organizations
- Most fees are covered by the school district.

Leave for Employees

COVID-19 Leave

- Submission of COVID-19 Leave Form.
- Physician's documentation

**Lowndes County Public Schools
EMPLOYEE LEAVE REQUEST
FAMILIES FIRST CORONAVIRUS RESPONSE ACT (FFCRA)**

Employee Name _____ Job Title _____
Work Location _____
First Date of Leave _____ Duration of Requested Leave _____
(in work days)
Use accrued _____ yes _____ sick No. of _____ Max. _____
Leave? _____ no _____ pers Days Avail

Reasons for Leave (check one)

- _____ Employee is subject to federal, state, or local COVID-19 quarantine/isolation order (~~may~~ **become available**)
- _____ Employee has been advised to self-quarantine by health care provider due to COVID-19 (**certification from health care provider will be required**)
- _____ Employee is experiencing symptoms of COVID-19 and is seeking a medical diagnosis (**certification from health care provider will be required**)
- _____ Employee is caring for immediate family member subject to federal, state, local or health care official's COVID-19 quarantine/isolation order (**certification from health care provider will be required**)
- _____ Employee is caring for a son or daughter under whose school has been closed due to COVID-19 or whose childcare is unavailable during COVID-19
- _____ Employee is experiencing a substantially similar condition as designated by Department of Health and Human Services

I certify that the above information is correct and my request is based on the reason indicated.

Employee Signature _____ Date Signed _____

OFFICE USE ONLY

Action Date _____ Action taken by _____
Type of Leave _____ Emergency Paid Sick Leave Action _____ Leave Approve
(check all that apply) _____ FMLA (check one) _____ Leave Denied
Comments: _____

Links

- Alabama Department of Public Health's Back to School Guidance
<https://www.alabamapublichealth.gov/index.html>
- CDC's Guidance for Schools
<https://www.cdc.gov/coronavirus/2019-ncov/community/schools-childcare/k-12-guidance.html>

Questions

?