

STMS Assessment Results

21-22 PSSA Data

Math - All Students					
Grade	Bel	Bas	Pro	Adv	A&P
6	73%	22%	4%	2%	6%
7	74%	21%	4%	1%	4%
8	80%	13%	5%	0%	5%
MS	76%	19%	4%	1%	5%

ELA - All Students					
Grade	Bel	Bas	Pro	Adv	A&P
6	21%	52%	24%	3%	27%
7	12%	56%	31%	1%	32%
8	25%	44%	26%	5%	31%
MS	19%	51%	27%	3%	30%

Science - All Students					
Grade	Bel	Bas	Pro	Adv	A&P
8	55%	18%	19%	8%	27%

PSSA Trend Data

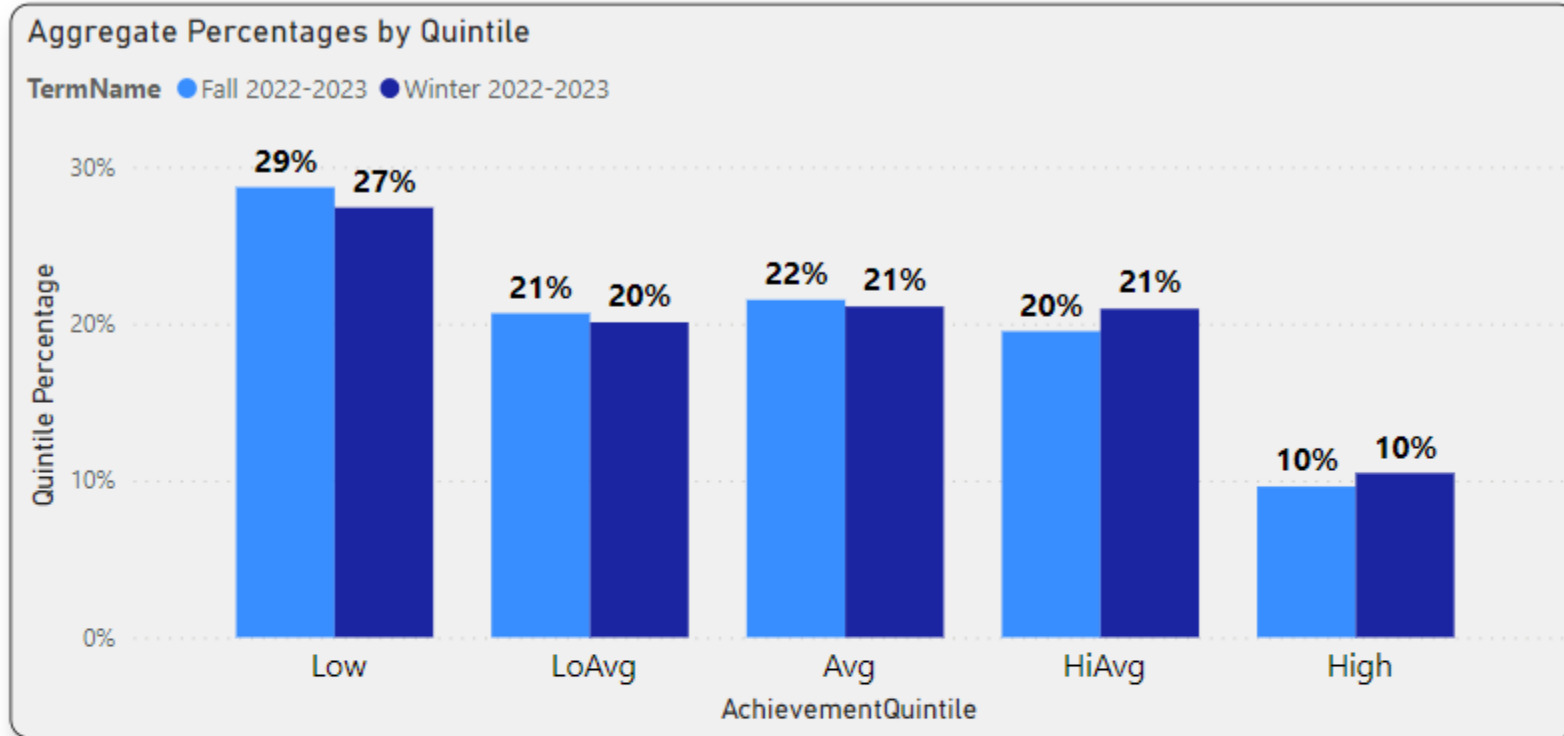
Math PSSA Results							
% Advanced & Proficient							
Grade	*14-15	15-16	16-17	17-18	18-19	20-21	21-22
6	25%	40%	27%	23%	23%	4%	6%
7	25%	31%	38%	23%	24%	9%	4%
8	31%	36%	30%	21%	18%	10%	5%
Building	27%	35%	31%	22%	22%	7%	5%

Reading/ELA PSSA Results							
% Advanced & Proficient							
Grade	*14-15	15-16	16-17	17-18	18-19	20-21	21-22
6	55%	61%	54%	54%	48%	32%	27%
7	45%	60%	53%	47%	44%	31%	32%
8	51%	46%	57%	57%	48%	40%	31%
Building	50%	55%	55%	53%	46%	35%	30%

Science PSSA Results							
% Advanced & Proficient							
Grade	14-15	15-16	16-17	17-18	18-19	20-21	21-22
8	49%	52%	48%	51%	49%	42%	27%

NWEA MAP Assessments: The MAP tests are nationally normed reading and math tests, given 3 times a year – Fall, Winter, and Spring.

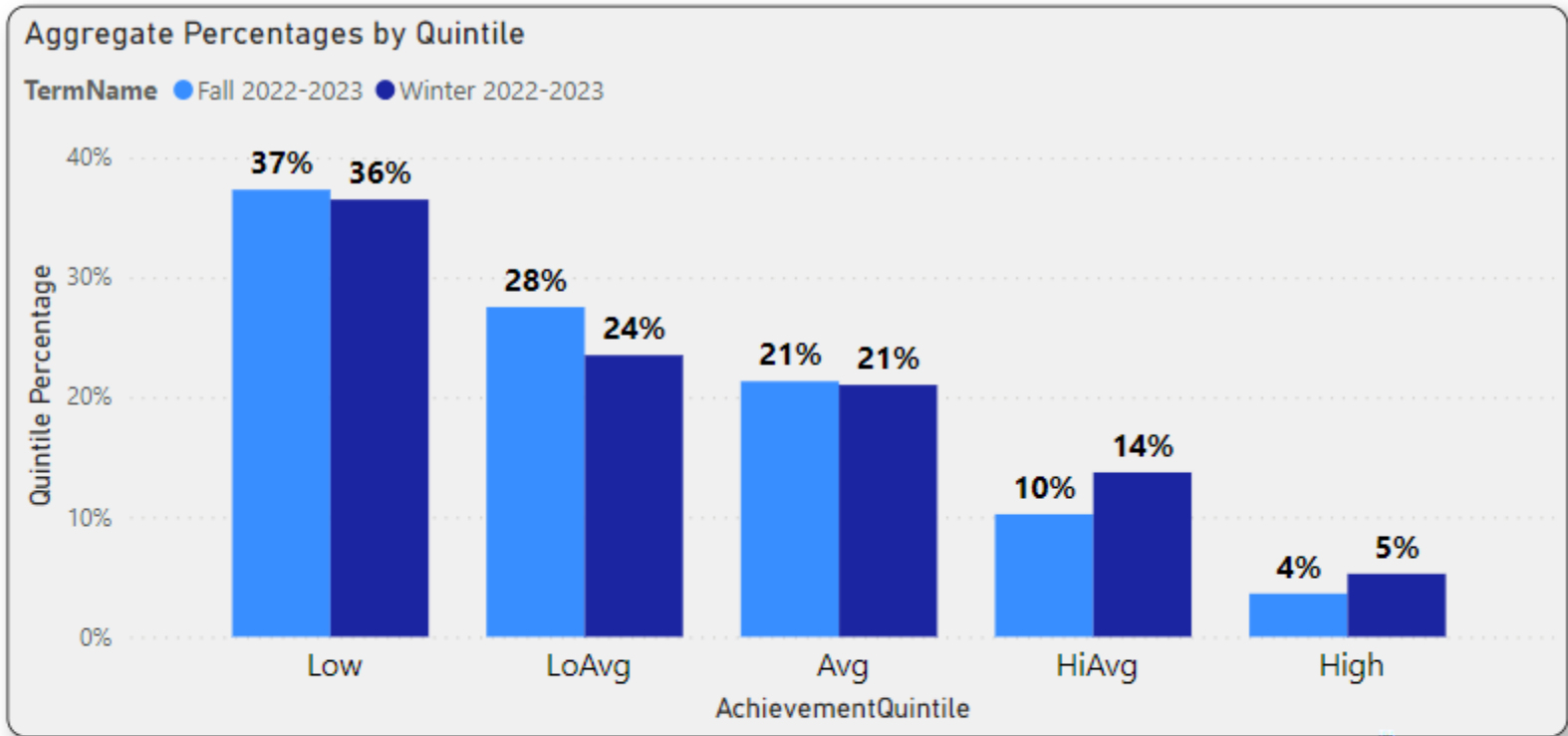
Reading Assessment



TermName	Low	LoAvg	Avg	HiAvg	High	Total
☐ Fall 2022-2023	200	144	150	136	67	697
6	59	44	66	53	22	244
7	69	45	44	35	30	223
8	72	55	40	48	15	230
☐ Winter 2022-2023	191	140	147	146	73	697
6	63	54	67	39	23	246
7	63	44	38	49	28	222
8	65	42	42	58	22	229
Total	391	284	297	282	140	1394

TermName	Low	LoAvg	Avg	HiAvg	High
☐ Fall 2022-2023	28.69%	20.66%	21.52%	19.51%	9.61%
6	24.18%	18.03%	27.05%	21.72%	9.02%
7	30.94%	20.18%	19.73%	15.70%	13.45%
8	31.30%	23.91%	17.39%	20.87%	6.52%
☐ Winter 2022-2023	27.40%	20.09%	21.09%	20.95%	10.47%
6	25.61%	21.95%	27.24%	15.85%	9.35%
7	28.38%	19.82%	17.12%	22.07%	12.61%
8	28.38%	18.34%	18.34%	25.33%	9.61%
Total	28.05%	20.37%	21.31%	20.23%	10.04%

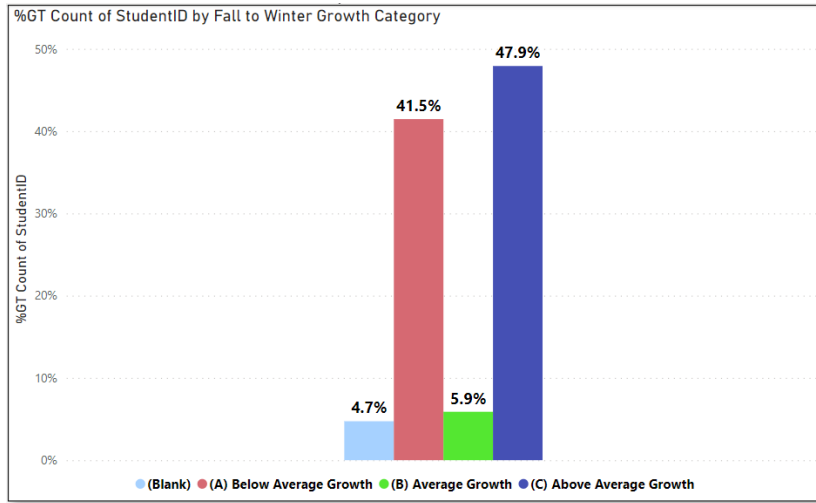
Math Assessment



TermName	Low	LoAvg	Avg	HiAvg	High	Total
⊖ Fall 2022-2023	259	191	148	71	25	694
6	89	64	53	28	11	245
7	88	58	46	20	9	221
8	82	69	49	23	5	228
⊖ Winter 2022-2023	250	161	144	94	36	685
6	94	63	43	23	15	238
7	83	46	48	34	8	219
8	73	52	53	37	13	228
Total	509	352	292	165	61	1379

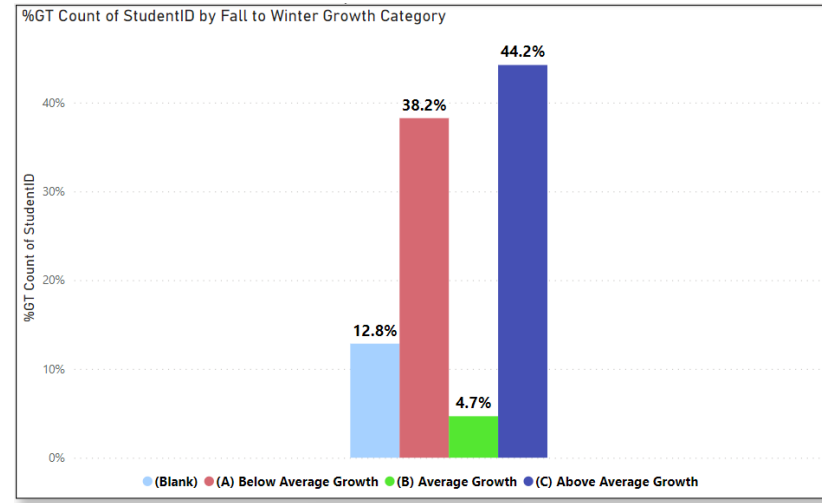
TermName	Low	LoAvg	Avg	HiAvg	High
⊖ Fall 2022-2023	37.32%	27.52%	21.33%	10.23%	3.60%
6	36.33%	26.12%	21.63%	11.43%	4.49%
7	39.82%	26.24%	20.81%	9.05%	4.07%
8	35.96%	30.26%	21.49%	10.09%	2.19%
⊖ Winter 2022-2023	36.50%	23.50%	21.02%	13.72%	5.26%
6	39.50%	26.47%	18.07%	9.66%	6.30%
7	37.90%	21.00%	21.92%	15.53%	3.65%
8	32.02%	22.81%	23.25%	16.23%	5.70%
Total	36.91%	25.53%	21.17%	11.97%	4.42%

MAP Reading Growth



Grade	Count of StudentID
6	246
(A) Below Average Growth	11
(B) Average Growth	120
(C) Above Average Growth	23
7	222
(A) Below Average Growth	7
(B) Average Growth	89
(C) Above Average Growth	10
8	229
(A) Below Average Growth	15
(B) Average Growth	80
(C) Above Average Growth	8
Total	697

MAP Math Growth



Grade	Count of StudentID
6	238
(A) Below Average Growth	11
(B) Average Growth	123
(C) Above Average Growth	14
7	219
(A) Below Average Growth	28
(B) Average Growth	86
(C) Above Average Growth	11
8	228
(A) Below Average Growth	49
(B) Average Growth	53
(C) Above Average Growth	7
Total	685

22-23 Title I Family Engagement Events

- August 31st: Back to School Night
- September 12th: PTSO
- September 21st: Parent Engagement
- October 11th: PTSO
- October 30th: Parent Engagement
- December 12th: PTSO
- December 21st: Parent Engagement (Gamifying Education)
- January 14th: PTSO
- January 25th: Parent Engagement

- February 13th: PTSO
- February 22nd: Parent Engagement
- March 13th: PTSO
- March 15th: Parent Engagement
- April 11th: PTSO
- April 19th: Parent Engagement
- May 15th: PTSO
- May 17th: Parent Engagement

22-23 Title I Schoolwide Plan Goals

Goal 1: The MTSS team will determine what data will be used to identify struggling EL students.

	Quarter 1	Quarter 2	Quarter 3	Quarter 4
Target	Collect baseline EL data from iLit test	Collect/Review MP1 EL data from iLit test to inform instruction	Collect/Review MP2 EL data from iLit test to inform instruction	Collect/Review MP3 EL data from iLit test to inform instruction
Actual Performance	Baseline Collected	Data demonstrates that 68% of our ELLs maintained or increased their scores.		

Goal 2: Provide ongoing professional development for teachers regarding the use and documentation of tier 1 interventions.

	Quarter 1	Quarter 2	Quarter 3	Quarter 4
Target	Provide PD for legal provisions for ELs	Provide PD on designing and delivering best practices for instruction of ELs	Provide PD on designing and delivering best practices for instruction of ELs	Provide data review opportunity/PD for all staff to review progress of our ELLs.
Actual Performance	Professional Development Provided for All Teachers	PD has been provided via ELL teacher and Instructional Coach		

Goal 3: ELs' scores on iLit test will increase.

	Quarter 1	Quarter 2	Quarter 3	Quarter 4
Target	Collect Baseline ELL Data from iLit test	Collect/Review MP1 EL data from iLit test to inform instruction	Collect/Review MP2 EL data from iLit test to inform instruction	Collect/Review MP3 EL data from iLit test to inform instruction
Actual Performance	Baseline Collected	Data demonstrates that 68% of our ELLs maintained or increased their scores.		

23-24 Title I Proposed Schoolwide Plan Goals

Goal 1: STMS will increase the percentage of students who meet or exceed average growth on the MAP Assessment (from the Fall to Winter Assessments and Winter to Spring Assessments) in Reading and Math during the 23-24 school year by 5%.

	Quarter 1	Quarter 2	Quarter 3	Quarter 4
Target	Collect Baseline Fall/Winter Data	+5.0%	Collect Baseline Winter/Spring Data	+5.0%
Reading Actual Performance				
Math Actual Performance				

Goal 2: STMS will increase the percentage of EL students who meet or exceed average growth on the MAP Assessment (from the Fall to Winter Assessments and Winter to Spring Assessments) in Reading and Math during the 23-24 school year by 5%.

	Quarter 1	Quarter 2	Quarter 3	Quarter 4
Target	Collect Baseline Fall/Winter Data	+5.0%	Collect Baseline Winter/Spring Data	+5.0%
Reading Actual Performance				
Math Actual Performance				