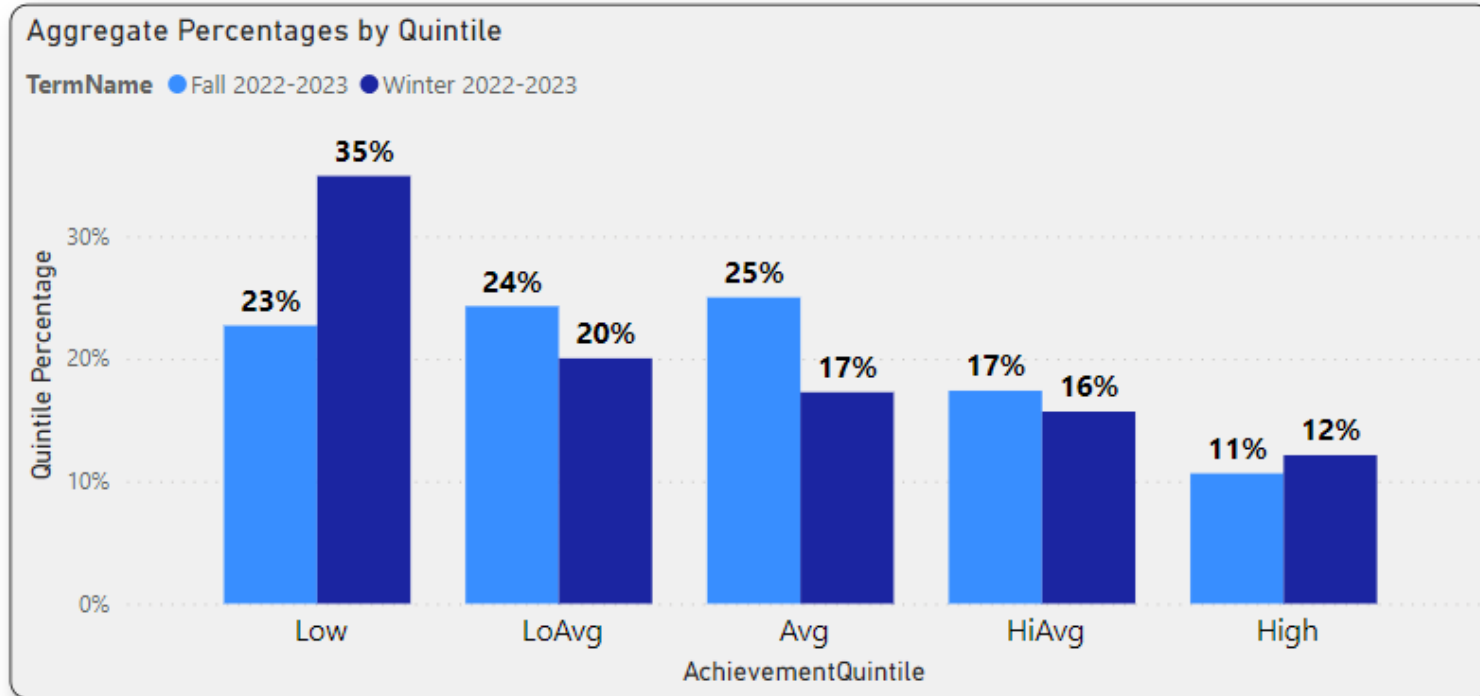


SLAC Assessment Results

NWEA MAP Assessments: The MAP tests are nationally normed reading and math tests, given 3 times a year – Fall, Winter, and Spring.

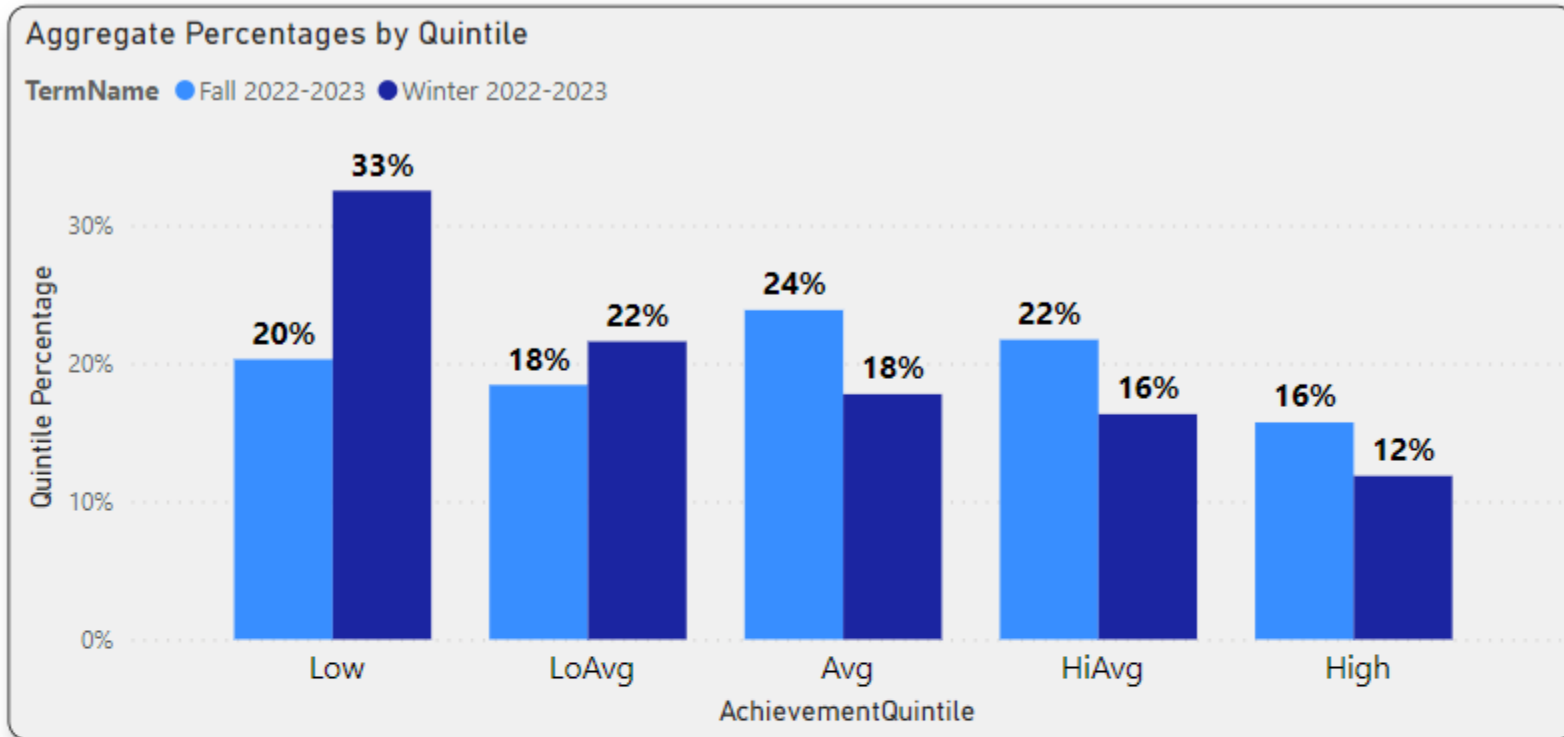
Reading Assessment



TermName	Low	LoAvg	Avg	HiAvg	High	Total
⊖ Fall 2022-2023	158	169	174	121	74	696
K	19	59	82	35	22	217
1	72	58	50	43	33	256
2	67	52	42	43	19	223
⊖ Winter 2022-2023	265	152	131	119	92	759
K	50	42	42	52	47	233
1	116	56	50	33	27	282
2	99	54	39	34	18	244
Total	423	321	305	240	166	1455

TermName	Low	LoAvg	Avg	HiAvg	High
⊖ Fall 2022-2023	22.70%	24.28%	25.00%	17.39%	10.63%
K	8.76%	27.19%	37.79%	16.13%	10.14%
1	28.13%	22.66%	19.53%	16.80%	12.89%
2	30.04%	23.32%	18.83%	19.28%	8.52%
⊖ Winter 2022-2023	34.91%	20.03%	17.26%	15.68%	12.12%
K	21.46%	18.03%	18.03%	22.32%	20.17%
1	41.13%	19.86%	17.73%	11.70%	9.57%
2	40.57%	22.13%	15.98%	13.93%	7.38%
Total	29.07%	22.06%	20.96%	16.49%	11.41%

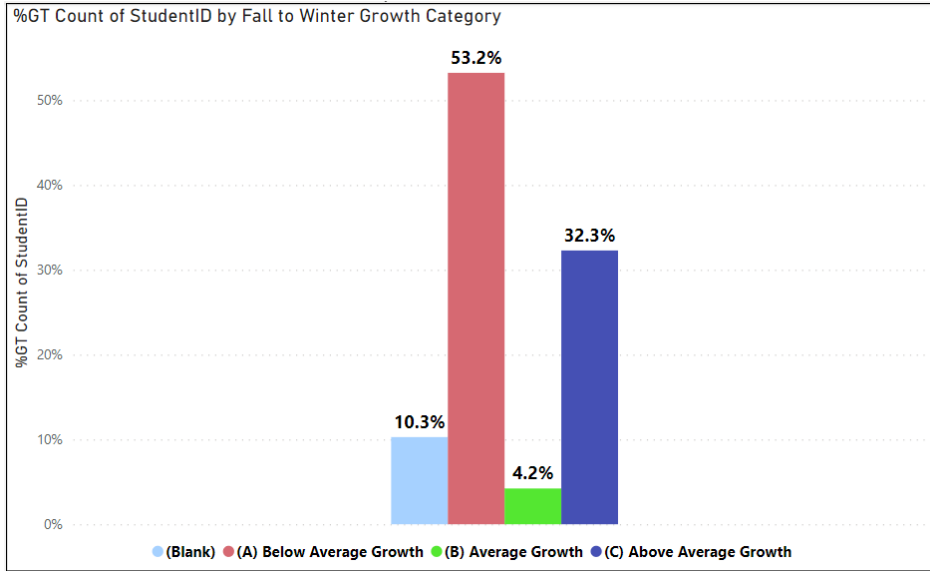
Math Assessment



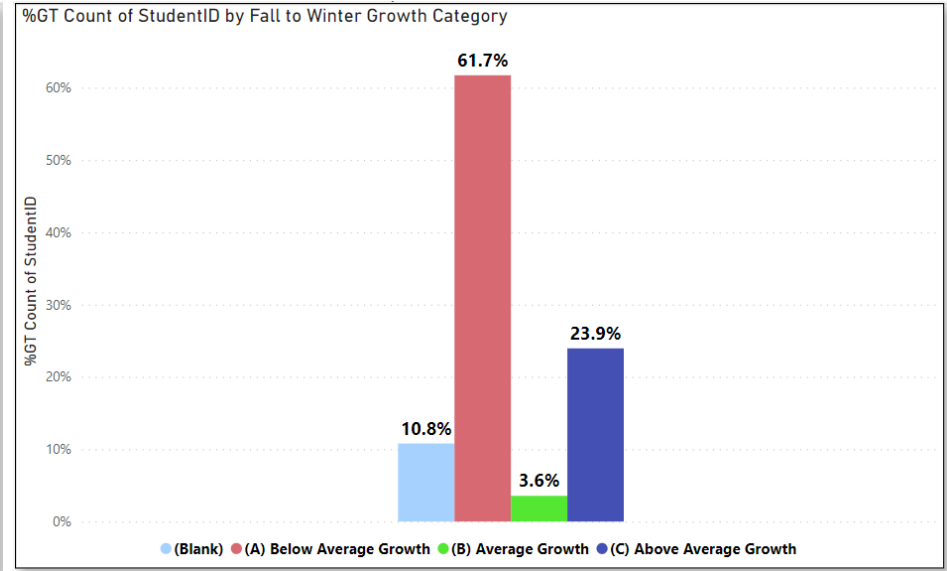
TermName	Low	LoAvg	Avg	HiAvg	High	Total
⊖ Fall 2022-2023	142	129	167	152	110	700
K	24	40	48	56	54	222
1	61	46	62	54	31	254
2	57	43	57	42	25	224
⊖ Winter 2022-2023	247	164	135	124	90	760
K	48	46	42	46	55	237
1	112	62	52	37	21	284
2	87	56	41	41	14	239
Total	389	293	302	276	200	1460

TermName	Low	LoAvg	Avg	HiAvg	High
⊖ Fall 2022-2023	20.29%	18.43%	23.86%	21.71%	15.71%
K	10.81%	18.02%	21.62%	25.23%	24.32%
1	24.02%	18.11%	24.41%	21.26%	12.20%
2	25.45%	19.20%	25.45%	18.75%	11.16%
⊖ Winter 2022-2023	32.50%	21.58%	17.76%	16.32%	11.84%
K	20.25%	19.41%	17.72%	19.41%	23.21%
1	39.44%	21.83%	18.31%	13.03%	7.39%
2	36.40%	23.43%	17.15%	17.15%	5.86%
Total	26.64%	20.07%	20.68%	18.90%	13.70%

MAP Reading Growth



MAP Math Growth



Grade	Count of StudentID
K	233
	24
(A) Below Average Growth	81
(B) Average Growth	12
(C) Above Average Growth	116
1	282
	30
(A) Below Average Growth	167
(B) Average Growth	9
(C) Above Average Growth	76
2	244
	24
(A) Below Average Growth	156
(B) Average Growth	11
(C) Above Average Growth	53
Total	759

Grade	Count of StudentID
K	237
	23
(A) Below Average Growth	121
(B) Average Growth	14
(C) Above Average Growth	79
1	284
	35
(A) Below Average Growth	183
(B) Average Growth	6
(C) Above Average Growth	60
2	239
	24
(A) Below Average Growth	165
(B) Average Growth	7
(C) Above Average Growth	43
Total	760

22-23 Title I Family Engagement Events

- September 25th: Open house (6-7pm)
- October 1st: Fall Festival Book Fair (11:30am-2:30pm)
- October 13th: Literacy Night (6-7pm)
- November 17th: Pre-K Night (6-7pm)
- February 23rd: Pre-K Night (6pm-7pm)
- March 3rd: STSD Men's Read
- March 21st: Literacy Night (6-7pm)
- April 27th: Pre-k Night (6-7pm)
- May 5th: Book Fair

22-23 Title I Schoolwide Plan Goals

Goal 1: SLAC will increase the amount appropriately translated communications to parents by 50% during the 22-23 school year.

	Quarter 1	Quarter 2	Quarter 3	Quarter 4
Target	+15%	+20%	+30%	+50.0%
Actual Performance	15%	15%		

Goal 2: SLAC will increase our EL family engagement in school sponsored events. Including conferences, literature nights, Title1 engagement nights, etc. from a baseline of 2.5% to 10% total for the year.

	Quarter 1	Quarter 2	Quarter 3	Quarter 4
Target	+2.5%	+5.0%	+7.5%	+10.0%
Actual Performance	5%	8%		

Goal 3: SLAC will increase community engagement and partnership opportunities by 50% for the 22-23 school year. This will be measured by participation in virtual events and community surveys.

	Quarter 1	Quarter 2	Quarter 3	Quarter 4
Target	+15%	+30%	+40%	+50%
Actual Performance	20%	30%		

23-24 Title I Proposed Schoolwide Plan Goals

Goal 1: SLAC will increase the percentage of students who meet or exceed average growth on the MAP Assessment (from the Fall to Winter Assessments and Winter to Spring Assessments) in Reading and Math during the 23-24 school year by 5%.

	Quarter 1	Quarter 2	Quarter 3	Quarter 4
Target	Collect Baseline Fall/Winter Data	+5.0%	Collect Baseline Winter/Spring Data	+5.0%
Reading Actual Performance				
Math Actual Performance				

Goal 2: SLAC will increase the percentage of EL students who meet or exceed average growth on the MAP Assessment (from the Fall to Winter Assessments and Winter to Spring Assessments) in Reading and Math during the 23-24 school year by 5%.

	Quarter 1	Quarter 2	Quarter 3	Quarter 4
Target	Collect Baseline Fall/Winter Data	+5.0%	Collect Baseline Winter/Spring Data	+5.0%
Reading Actual Performance				
Math Actual Performance				