

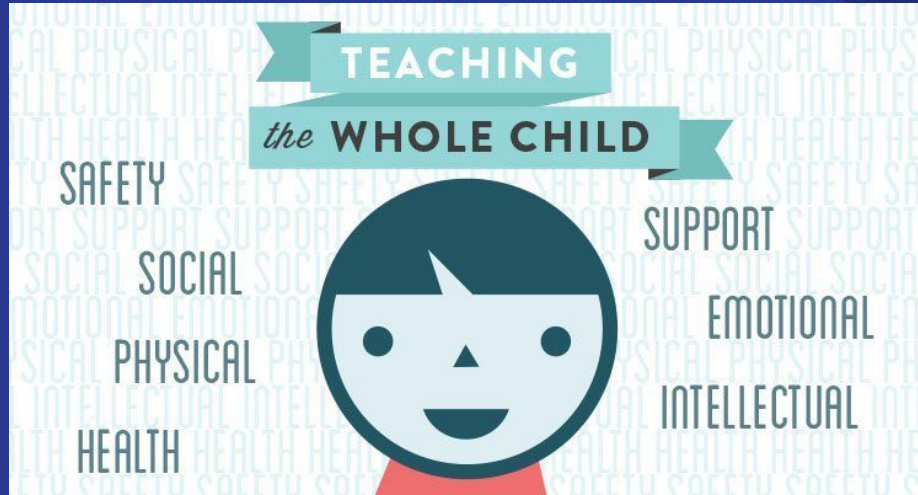
Hollis Brookline Cooperative School Board  
Wednesday, December 11, 2019  
Hollis Brookline Middle School Library  
All times are estimates and subject to change without notice

- 6:00 Call to Order
- 6:05 Appointment of a process observer  
Agenda adjustments  
Approve meeting minutes  
Nomination/ resignations/retirements/correspondence
- 6:25 Public Input
  - Drew Mason, Town Moderator
- 6:15 **Deliberations – Part 1**
  - **To see what action the Board will take regarding setting a date for a special meeting for Apportionment**
- 6:30 Presentation - Whole Child Education (SEL) – Assistant Superintendent Bergskaug and Assistant Superintendent Thompson
- 6:55 Principal Reports/Athletic Report
  - Hollis Brookline High School Program of Studies
- 7:15 Discussion
  - Facilities Committee update – Field update – Superintendent Corey
  - Budget Committee Update – FY 21 Budget development
  - SAU Budget update
- 7:45 **Deliberations – Part 2**
  - **To see what action the Board will take regarding the HBHS Program of Studies for 2020-2021**
  - **To see what action the Board will take regarding Policy IMBC-Alternative Credit Options - third reading**
  - **To see what action the Board will take regarding Policy IHBH-Extended Learning Opportunities – third reading**
  - **To see what action the Board will take regarding Policy IMBA-Online/Internet-Based Education – third reading**
  - **To see what action the Board will take regarding Policy IIB-Class Size – second reading**
  - **To see what action the Board will take regarding Policy JICK-Pupil Safety and Violence Prevention – Bullying – first reading**
- 8:15 Report out Process Observer
- 8:15 Motion to enter non-public - under RSA 91-A: 3II (a) Compensation and/or (c) reputation
- 8:25 Motion to Adjourn

**BROOKLINE, HOLLIS, & HOLLIS-BROOKLINE SCHOOL DISTRICTS (SAU 41)**  
**2020 ANNUAL MEETING DATES and DEADLINES**  
**USING RSA REGULATIONS**


Action	RSA Parameters	Traditional					SB2		RSA Reference
		Coop- Day 1	Coop- Day 2	Snow Date	Hollis	Snow Date	Brookline	Snow Date	
Last day to <u>post notice</u> of budget hearing	SB2: "...the second Tuesday in January..."; Trad.: at least 7 days in advance of budget hearing	1/28/2020			2/4/2020		1/14/2020		SB2-40:13,II-a(a), 32:5,I; Trad.-32:, I
Last day for negotiated cost items to be finalized	SB2: "...the second Tuesday in January..."; Trad.: not later than 30 days before the date prescribed for the district meeting, or the 2nd Tues in March, whichever is earlier	2/1/2020			2/1/2020		1/14/2020		SB2-40:13, II-a (b), 273-A:1; Trad.-32:5-a; 197:6
Last day for petitioned warrant articles	SB2: "...the second Tuesday in January..."; Trad.: not later than 30 days before the date prescribed for the district meeting, or the 2nd Tues in March, whichever is earlier	2/4/2020			2/10/2020		1/14/2020		SB2-40:13, II-a (b), 39:3; Trad.-197:6
<b>PUBLIC HEARING DATES</b>	SB2: "...on or before the third Tuesday in January..."; Trad.: not later than 25 days before (district meeting) i.e. 25 days or EARLIER	<b>2/5/2020</b>	<b>N/A</b>	<b>2/8/2020</b>	<b>2/13/2020</b>	<b>2/14/2020</b>	<b>1/21/2020</b>	<b>1/22/2020</b>	SB2-40:13, II-a (c); Trad.-32:5, I
<i>FYI: Last day to hold at least one budget public hearing</i>	<i>not later than 25 days before [district meeting] i.e. 25 days or EARLIER</i>	2/20/2020			2/14/2020				SB2-40:13, II-a (c); Trad.-32:, I
<b>FIRST SESSION-DELIBERATIVE</b>	SB2: "...between the first and second Saturdays following the last Monday in January, inclusive of those Saturdays..."						<b>2/3/2020</b>	<b>2/4/2020</b>	SB2-40:13, III
Town Report Submission Deadline	Deadlines provided by Towns for them to meet timeline requirements	2/8/2020			2/8/2020		2/7/2020		Town Requirements
Last day for budget committee to deliver budget and warrant article recommendations to select persons for Posting	Trad.: at least 20 days before [district meeting]	2/25/2020			2/19/2020		1/13/2020		Trad.-32:16,IV
Last day to <u>post</u> warrant, budget and default budget	SB2: "...on or before the last Monday in January..."; Trad.: 14 days before day of meeting (not including meeting day or posting day)	3/2/2020			2/25/2020		1/27/2020		SB2-40:13, II-a (d), 39:5, 197:7; Trad.-197:7
Annual report with budget (and ballot questions) made available to voters	SB2 and Trad.: at least 7 days prior to meeting	3/9/2020			3/3/2020		1/24/2020		SB2-40:13, II; Trad.-32:5, VII(a)
<b>SCHOOL DISTRICT MEETING DAY</b>	Trad.: annually between March 1 and March 25	<b>3/17/2020</b>	<b>3/18/2020</b>	<b>3/19/2020</b>	<b>3/11/2020</b>	<b>3/13/2020</b>	<b>N/A</b>	<b>N/A</b>	Trad.-197:1
<b>SECOND SESSION-BALLOT VOTING</b>	SB2: "...the second Tuesday in March..."	3/10/2020			3/10/2020		3/10/2020		SB2-40:13, VII
Submit signed and completed forms to DRA	SB2 and Trad.: within 20 days of the close of the meeting	3/30/2020			3/30/2020		3/30/2020		21-J:34,II

Hollis start time is 7pm; Brookline and Coop start time is 6:30




# Whole Child Focus at SAU~41

# Committee Work

- **Develop Mission Statement**
  - **Identify an agreed upon definition**
  - **Develop a community resource list**
  - **Identify current SEL interventions/tools being used in the district**
  - **Create and implement teacher questionnaire**
  - **Identify focus area(s) for the district**
- 

# **SAU 41 Whole-Child Mission Statement**

**Our mission for SAU41 is to promote a relationship-centered culture that supports academic, social emotional and physical well-being in a nurturing learning environment. We aim to develop resilient and productive members of society and be responsive to the diversity and needs of students, staff, families and community.**



# What is Social Emotional Learning

**“It is the process by which children and adults develop the awareness and skills to make positive decisions, deepen their relationships, and reach their goals.”**

(CASEL, 2014; Six Seconds, 2007)



# Did you know...

Nearly 100,000 college students were surveyed and...

84.3% felt overwhelmed by all they had to do,

79% felt exhausted (not from physical activity);

60% felt very sad

57% felt very lonely

51% felt overwhelming anxiety

46% felt things were hopeless

38% felt overwhelming anger

31% felt so depressed that it was difficult to function

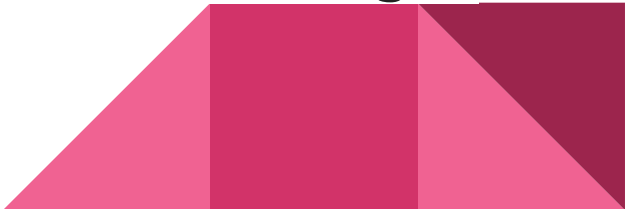
8% seriously considered suicide and

6.5% intentionally cut or injured themselves

(taken from How to Raise an Adult)




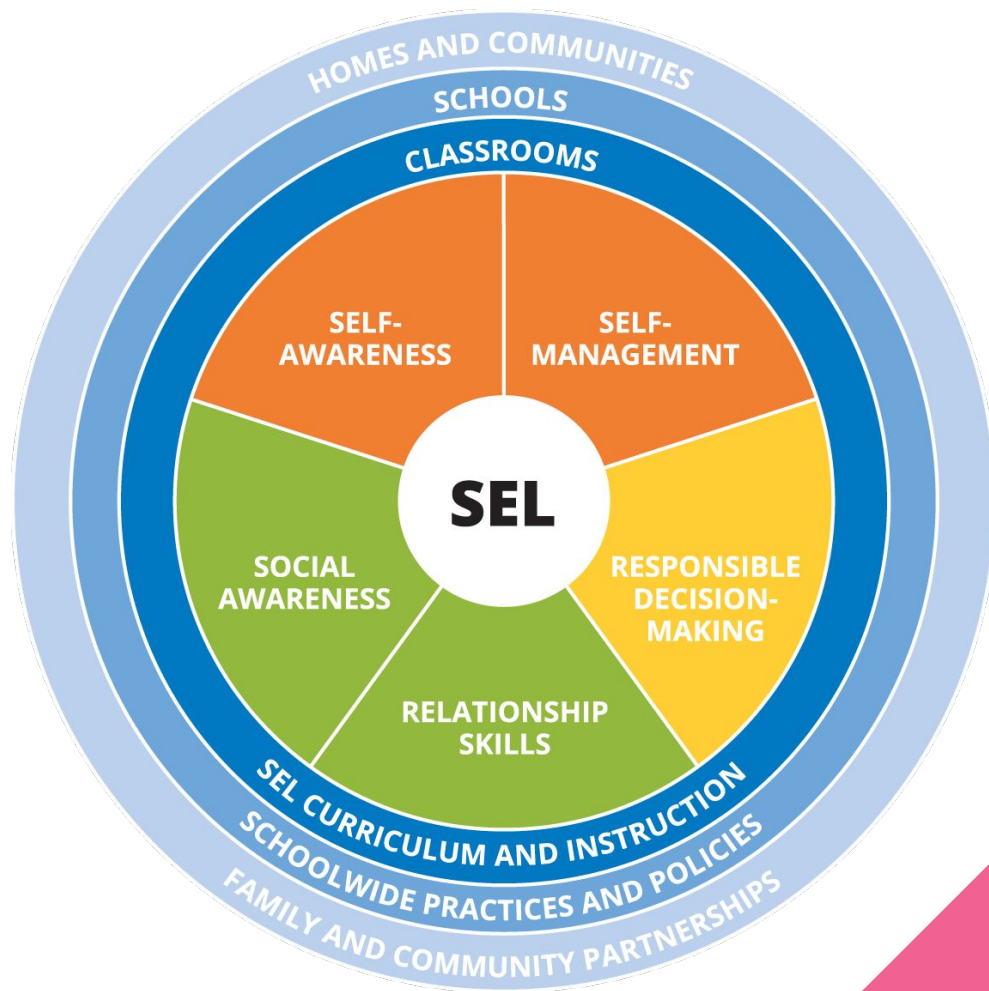
# WHY?

- SEL programs can **enhance children's confidence** in themselves; **increase their engagement** in school, along with their test scores and grades; and **reduce conduct problems** while promoting desirable behaviors.
  - Children who are able to **effectively** manage their thinking, attention, and behavior are also more likely to have **better levels of achievement**.
- 

- Children with greater social emotional competence are **more likely to be ready for college, succeed in their careers, have positive relationships** and better mental health, and become engaged citizens.
- In addition, school-based SEL programs can **improve students' competence, enhance their academic achievement.**




- Those with strong social skills are more likely to **make and sustain friendships, initiate positive relationships with teachers**, participate in classroom activities, and be **positively engaged in learning**.
  - Social and emotional skills serve as **important protective factors in the face of negative life events or chronic stressors** and support general wellbeing, such as job and financial security as well as physical and mental health, through adulthood.
- 

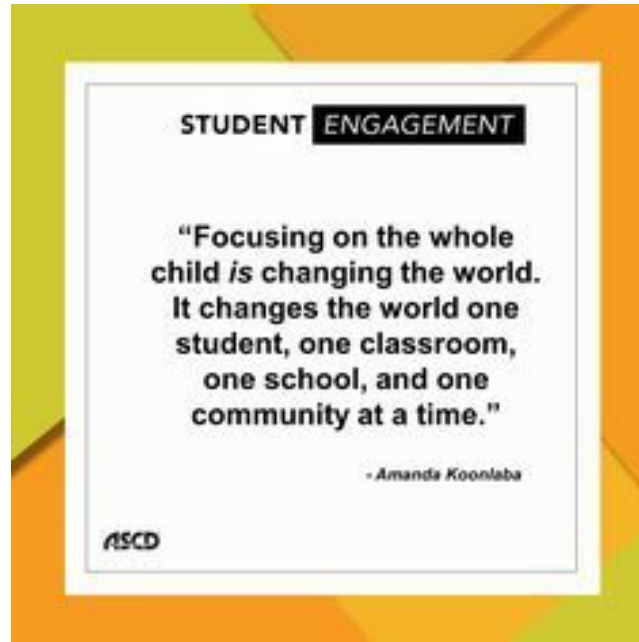


In the last 4 weeks, how often did students in this class demonstrate this skill?	Frequently/ Very Freq.	Occasionally	Rarely/ Never	How comfortable are you teaching this skill?
Social Awareness	51.7	35.9	12.4	66.3
<b>Self Management</b>	<b>44.1</b>	<b>40.1</b>	<b>15.8</b>	<b>60.2</b>
Relationship Skills	56.9	32.8	10.3	61.1
Decision-Making	45.9	41.3	12.7	62.3
<b>Self-Awareness</b>	<b>38.0</b>	<b>43.8</b>	<b>18.2</b>	<b>58.1</b>
Goal Directed Behavior	49.2	41.6	9.1	66.9
Optimistic Thinking	48.0	39.8	12.1	65.7
Personal Responsibility	47.7	38.9	13.3	66.9

# Where do we go from here?

- SAU41 District Goal “whole child” established
  - SAU-Wide Professional Development Day targeting three strands of Strategic Plan with keynote
    - Whole-Child Education
    - Instructional Best Practices of Essential Standards
    - Safety
  - Building-based Committees to direct “on the ground” work
  - Mid-Year check in and End of Year check in to direct continued work
- 

# Thank you!



To: Hollis Brookline Cooperative School Board  
From: Tim Girzone, Principal HBMS  
Re: Principal's Report  
Date: December 11, 2019

## Information Only

**Veterans Day Assembly:** In celebration of Veterans Day, HBMS once again honored local veterans who have served in the United States Armed Forces. The ceremony was highlighted by the reading of original student work, performances by our band and chorus students, the reciting of Old Glory, and a wonderful presentation of U.S. historical flags by the keynote speaker, Mr. Chris Lucier.



**NH TechWomen Ambassador Week:** Once again, over 60 female students from HBMS took part in the NH TechWomen Ambassador Week hosted at HBHS. This program is part of the NH Tech Council's TechWomen TechGirls initiative that builds on a strong community of women enthusiastic about technology and supporting efforts where girls are exploring STEM (science, technology, engineering and mathematics) as a career or area of study.

**Student Council:** HBMS Student Council is once again collecting gifts for the children at Nashua Children's Home. Anyone interested in sponsoring a child may pick up a 'mitten' in the main office. In November, the student council organized a food drive competition between ROCK's that resulted in a donation of over 1,000 food items to the Nashua Soup Kitchen before Thanksgiving.

**Facility Updates:** The shared Robotics/Tech Ed space has recently been re-wired to adequately power the recently purchased and newly installed pieces of equipment within the new floor plan. The final stages of installation of the greenhouse solar panels (donated by Hollis Rotary) has also recently taken place.

### Important Dates:

Tuesday 12/10 - Winter Concert

Respectfully Submitted,  
Tim Girzone  
Principal, Hollis Brookline Middle School

To: Andrew Corey, Superintendent  
From: Rick Barnes, Principal  
RE: December Board Report

**Instructional Practices Committee Update:** The subcommittees continue to meet on schedule. The Top 10 subcommittee recently concluded its work resulting in a recommendation to the Steering Committee. Upon reviewing the recommendation, the Steering Committee may move the matter to the Policy Committee so it may come before the board.

**Evening Vaping Presentation for Parents and Community Members:** Breathe NH recently completed presentations to all students during CavBlock regarding the dangers of vaping to include all of the latest developments. On December 10 at 6:30 PM in the auditorium, HBHS will be hosting a presentation for parents by the United States Public Health Services Commissioned Corps.

**2020-21 Program of Studies:** (See Attached)

**HBHS Ranked #2 in NH STEM:** Hollis Brookline High School has been named to Newsweek's Best STEM School Rankings for 2020. Schools included in the rankings were found to have dynamic learning environments as well as highly skilled teachers in Science, Technology, Engineering, and Math who continuously engage their students with new developments in the STEM field.

**Youth and Traditional Registered Apprenticeships as a Career Path:** On the evening of November 12, HBHS hosted a regional parent and student information night regarding some amazing opportunities for students. Approximately one hundred people signed up in advance to attend. Thank you to our ELO Coordinator Dr. Breault for her hard work organizing this event.

Respectfully Submitted,

Rick Barnes

To: Andrew Corey, Superintendent  
From: Brian Bumpus, District Athletic Coordinator  
Re: December 2019 Board Report

The Fall season officially came to close with a championship victory for the HBHS Football team! Congratulations to all of the players and coaches on a well-played and hard-fought battle, and thank you to all of the fans who made the journey to stand out in the cold and heavy rain to support the team.



**HBMS Update:** All three winter sports are well underway at this point in the year. While the wrestling team is still preparing for their first match of the season, both the Boys and Girls Basketball teams are off to hot starts, as they are undefeated with 3-0 records to start the year.

**HBHS Update:** Keeping with the trend of cold and rainy games, the #2-seeded HBHS Girls Soccer team dropped a heartbreaker to #3-seeded Bow in the semi-final round of the NHIAA State Tournament. And while the Fall season has come to a close, all of our winter teams are off and running. Regular season action kicks up the week of 12/9 with the Wrestling and Bowling teams having their first competitions. The regular season for all other teams begins the following week.

**Turf Field – Gmax Testing:** Upon completion of the turf field installation, Gmax testing took place to insure that the field meets the standards for safe play, as set forth by the ASTM. The results of this testing are attached below. We are pleased to announce that our field falls well below the acceptable impact limit of 165Gs.



*Photo Courtesy of Jack Holmes*

**Recent Coaching Hires:**

Indoor Track Asst. Coach – Jeremy Gaudet

**District Coaching Openings:** The HB Athletic Department is currently looking for qualified candidates to fill the following coaching vacancies.

**HBHS**

Boys Lacrosse Head Coach

Boys Lacrosse JV Coach

Boys Outdoor Track Head Coach

Boys Outdoor Track Asst. Coach

Outdoor Track Associate Coach

Boys Tennis Asst. Coach

Girls Tennis Asst. Coach

**HBMS**

Boys Lacrosse Coach

Respectfully Submitted,



Brian Bumpus

District Athletic Coordinator

# ON-SITE TESTING

## *g*-MAX IMPACT EVALUATION



### Project Information

<b>Project Name</b>	Hollis-Brookline High School Football Field ASTM F1936-19 <i>g</i> -max Impact Evaluation		
<b>Client Info</b>	FieldTurf USA Inc 175 Industrial Blvd. Calhoun, GA 30701	<b>Site Info</b>	Hollis-Brookline High School 24 Cavalier Ct Hollis, NH 03049
<b>Report Date</b>	11/25/2019	<b>Test Date</b>	11/22/2019
<b>Report Status</b>	Final	<b>Job no.</b>	95456/5830s
<b>Prepared by</b>	Michael Rocheleau Field Operations Manager		
<b>Checked by</b>	Jeffrey Gentile Operations Director		

#### Notes:

1. This report has been prepared by Firefly Sports Labs USA with all reasonable skill, care and diligence within the terms of the contract with the Client and within the limitations of the resources devoted to it.
2. This report is confidential to the Client and Firefly Sports Labs USA accepts no responsibility whatsoever to third parties to whom this report, or any part thereof, is made known. Any such party relies upon the report at their own risk.
3. This report shall not be used for engineering or contractual purposes unless signed by the Author and the Checker and unless the report status is "Final."

### Summary

Firefly Sports Labs USA was commissioned to perform on-site *g*-max impact testing per ASTM F1936-19. A complete test was performed in accordance with the ASTM F1936-19 Standard. The results have been summarized in the quick reference table below. Complete results and background can be found in the subsequent sections of this report.

#### Quick Reference Results Summary

	Average	(min)	Range	(max)	Max per ASTM
<b><i>G</i>max (g's)</b>	89	83	to	99	200
<b>Infill Depth (mm)</b>	30	25	to	33	n/a



## SPORTS LABS USA

Unit D5•78 Londonderry Tpk•Hooksett•NH•03106  
(603) 715-5453 • Info@sportslabsusa.com  
November 25, 2019 • Page 1 of 7



# ON-SITE TESTING g-MAX IMPACT EVALUATION



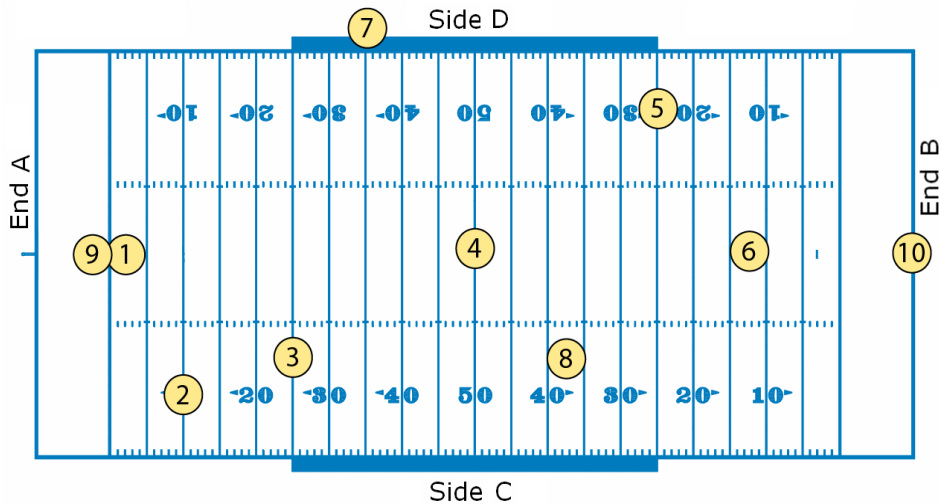
## Table Contents

Project Information .....	1
Summary .....	1
Results Table.....	3
Results Graphs.....	4
Overall Photo.....	5
Location Photos.....	6
End of Report.....	7

## General Information

<b>Testing Device</b>	ASTM F1936 Apparatus TRIAX 2010 Data Acquisition	<b>Test Method</b>	ASTM F1936-19 ASTM F355 Procedure A
<b>Install Date</b>	2019	<b>Test Date</b>	11/22/2019
<b>Field Orientation</b>	End A= North	<b>Primary Sport</b>	Football
<b>Product Info</b>	n/p	<b>Infill System</b>	SBR and Sand
<b>Underlayment</b>	Yes	<b>Air Temp (° F)</b>	48
<b>Turf Cover %</b>	n/a	<b>Soil Moisture %</b>	n/a
<b>Humidity %</b>	72	<b>Weather Conditions</b>	Overcast
<b>Misc Field Notes</b>	None	<b>Technician</b>	PP

## Location Map



## SPORTS LABS USA

Unit D5•78 Londonderry Tpk•Hooksett•NH•03106  
(603) 715-5453 • Info@sportslabsusa.com  
November 25, 2019 • Page 2 of 7



# ON-SITE TESTING

## g-MAX IMPACT EVALUATION



### Results Table

Loc #	Drop #	Gmax (g's)	Location Description	Gmax Avg (g's)	Infill Depth (mm)	Surface Temp (°F)
1	1	83	Goal Line, End A, field centerline	99	25	47
	2	96				
	3	101				
2	1	74	10 Yard Line, End A, 63 ft from field centerline to the Side C	85	32	47
	2	83				
	3	86				
3	1	74	25 Yard Line End A, 40 ft from field centerline to Side C	86	29	47
	2	84				
	3	87				
4	1	71	field centerline	83	33	47
	2	81				
	3	84				
5	1	75	25 Yard Line, East end, 63 ft from field centerline to Side D	88	32	46
	2	86				
	3	89				
6	1	77	12 Yard Line, End B, field centerline	91	29	47
	2	88				
	3	93				
7	1	80	North Team area, Side D	93	32	47
	2	91				
	3	94				
8	1	74	37 Yard Line, End B, 40 ft from the field centerline to Side C	87	32	47
	2	85				
	3	88				
9	1	79	6 ft from Goal Line to the back of the End Zone, End A, field centerline	90	29	47
	2	88				
	3	91				
10	1	79	6 ft from the back of the End Zone to the Goal Line, End B, field centerline	93	28	45
	2	91				
	3	94				
<b>Averages:</b>				<b>89</b>	<b>30</b>	<b>47</b>



## SPORTS LABS USA

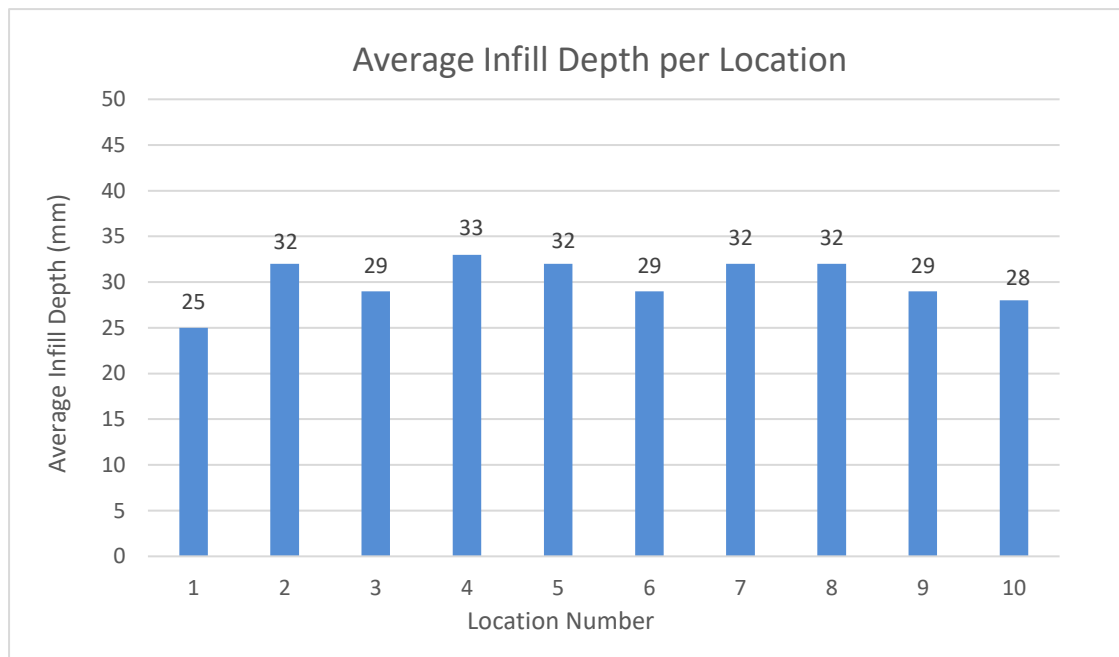
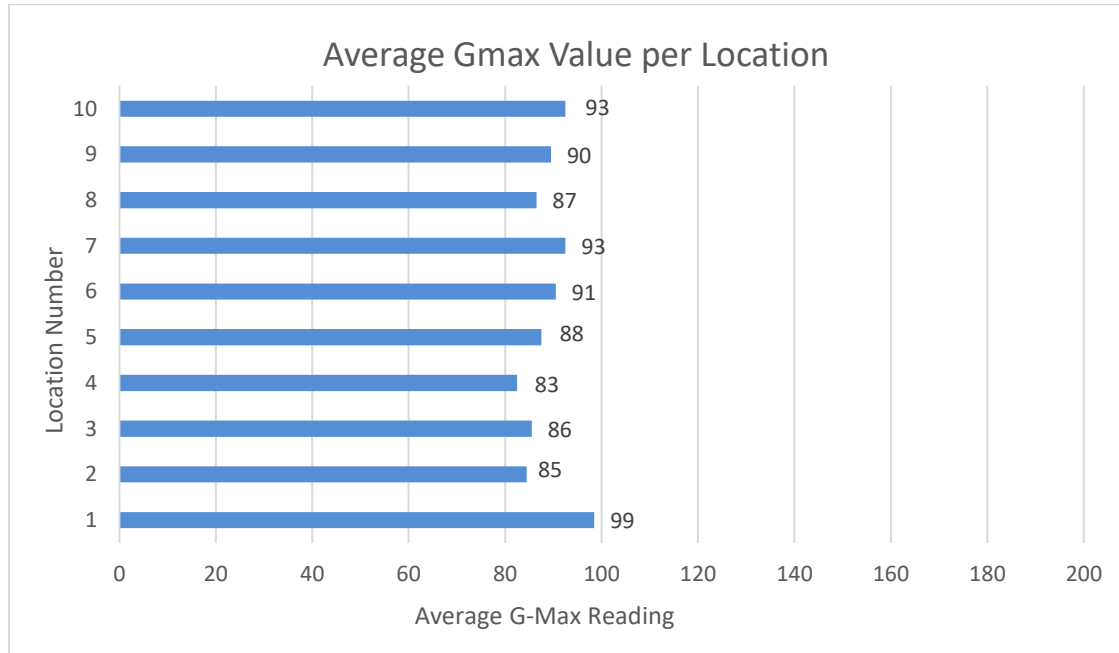
Unit D5•78 Londonderry Tpk•Hooksett•NH•03106  
 (603) 715-5453 • Info@sportslabsusa.com  
 November 25, 2019 • Page 3 of 7



# ON-SITE TESTING g-MAX IMPACT EVALUATION



## Results Graphs



**SPORTS LABS USA**

Unit D5•78 Londonderry Tpk•Hooksett•NH•03106  
(603) 715-5453 • Info@sportslabsusa.com  
November 25, 2019 • Page 4 of 7



# ON-SITE TESTING g-MAX IMPACT EVALUATION



Overall Photo



## SPORTS LABS USA

Unit D5 • 78 Londonderry Tpk • Hooksett • NH • 03106  
(603) 715-5453 • Info@sportslabsusa.com  
November 25, 2019 • Page 5 of 7

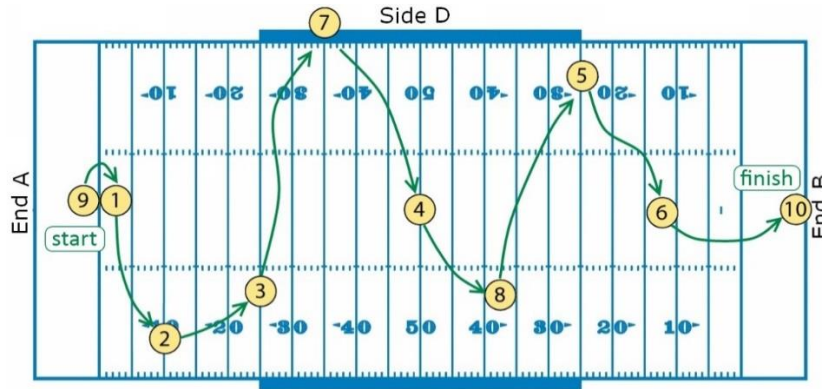


# ON-SITE TESTING g-MAX IMPACT EVALUATION



## Location Photos

Photos have been taken at each location and are displayed in the sequence on the sequence map below.



Location #9



Location #1



Location #2



Location #3



**SPORTS LABS USA**

Unit D5•78 Londonderry Tpk•Hooksett•NH•03106  
(603) 715-5453 • Info@sportslabsusa.com  
November 25, 2019 • Page 6 of 7



# ON-SITE TESTING g-MAX IMPACT EVALUATION



Location #7



Location #4



Location #8



Location #5



Location #6



Location #10

End of Report



**SPORTS LABS USA**

Unit D5•78 Londonderry Tpk•Hooksett•NH•03106  
(603) 715-5453 • Info@sportslabsusa.com  
November 25, 2019 • Page 7 of 7



## 2020-21 Program of Studies Changes Walkthrough

### Overall:

*For each subject where it is appropriate, the Program of Studies will contain a flow chart similar to the charts we have used for Math and Science:*

### *Math*

#### HBHS Mathematics Department Course Sequencing

8 <sup>th</sup> Grade	9 <sup>th</sup> Grade	10 <sup>th</sup> Grade	11 <sup>th</sup> Grade	12 <sup>th</sup> Grade
Grade 8 Math	Algebra 1 <sup>a</sup>	Algebra 1B	General Geometry	Running Start (RS) Algebra 2 with Quantitative Reasoning
Grade 8 Math	Algebra 1	Geometry	RS Algebra 2 with Quantitative Reasoning	RS Algebra 3/Trig Personal Finance or other 4 <sup>th</sup> year math experience
Grade 8 Math	Algebra 1	Geometry	Algebra 2	RS Algebra 3/Trig Pre-Calculus
Algebra	Geometry	Algebra 2	Pre-Calculus	Calculus AP Statistics
Algebra	Accelerated Geometry	Accelerated Algebra 2	Honors Pre-Calculus	AP Calculus AP Statistics

### *Science*

9 <sup>th</sup> Grade	10 <sup>th</sup> Grade	11 <sup>th</sup> Grade	12 <sup>th</sup> Grade Science Electives
General Science Physical Science with Earth Science Accelerated Biology	Life Science Biology Accelerated Biology Chemistry Honors Chemistry	Chemistry Essentials Chemistry and Society Chemistry Honors Chemistry  <b>11<sup>th</sup> Grade Science Electives</b> Anatomy & Physiology 1/2 AP Biology AP Chemistry AP Environmental Science AP Physics 1 Honors Anatomy & Physiology	Anatomy & Physiology 1/2 AP Biology AP Chemistry AP Environmental Science AP Physics 1 or 2 Chemistry and Society Honors Anatomy & Physiology Physics: Conceptual Physics: <u>Princ.</u> & Problems

### **Science:**

The *prerequisite to Chemistry* will be completion of or concurrence with Algebra 2 (or RS Algebra 2) or recommendation of department head. Chemistry presents some significant mathematics, but we have found some General Geometry students are capable of handling the math—we think an individualized assessment of Geometry students is our best approach.

*Physics* will have the following course offerings: AP Physics 1 and 2, Honors Physics, and Physics. Honors Physics will attract those who want the academic challenge of studying physics (which will be reflected in grade credit for GPA) but without the AP level of challenge. There was also difficulty in understanding the inherent level of challenge of Physics: Principles and Problems (it was often surprising to students that so much math was involved). Designating the levels as AP, Honors, and regular Physics seems to better reflect the levels of study for the subject.

*Anatomy and Physiology*, now offered as semesterized courses as 1 and 2, will be recombined into a single course, since all students who take the courses take them both and take them in the same year in sequence anyway.

### **Visual & Performing Arts:**

*Improv and Acting 1 and 2* will now all be semester courses. This will ease some scheduling constraints that have presented difficulty for populating these classes appropriately according to student requests in the past. *Theater Workshop* will be yearlong but repeatable for credit if pursuing a different tract (there are three available: acting, theater tech, and writing/directing). These two changes together give a student looking for theater electives throughout high school a possible 9-12 pathway.

*Fundamentals of Art* will no longer be a prerequisite for Digital Photography, Ceramics, and Introduction to Graphic Arts. This will open the electives to many students who previously could not take them until after their sophomore year, since Fundamentals sections were filled by upperclassmen first to meet elective requirements.

*Drawing and Painting 1 and 2* will be offered as simply *Drawing* and *Painting*. With two levels in the same classroom, differentiated according to student level (which means a student could take “Painting” more than once—first as Painting 1, then as Painting 2), what were very small courses that often couldn’t run can now be offered as more fully populated sections. This would also then make staff available to run more sections of Fundamentals of Art (a prerequisite for Drawing and Painting).

### **School Counseling Department:**

The *drop/add* period has been extended by a few days for each semester—five days for semester one and three days for semester two.

### **Top Ten language:**

To allow for the work of the Instructional Practices Committee, we will provisionally remove language relating to the Top Ten (“It is the policy of the board to name the Valedictorian, Salutatorian and those students who rank numbers three through ten alphabetically at the end of their senior year and those students who rank one through ten at the end of their junior year. Please see policy IKC for further details”), with the understanding that it may be put back in based on the decision-making process of the school board with respect to this topic.

### **Social Studies:**

*Contract for Honors (Civics and Economics)* has been removed. Economics, Civics, U.S. History, and World Studies will once again become heterogeneous.

### **Engineering:**

*Robotics* has been redesigned to become Engineering Technologies. Our current Engineering teacher has evaluated the appropriate preparation for students who wish to follow the Engineering coursework we offer (specifically, the Project Lead the Way courses) and designed a course to reflect those needs.

The *prerequisites for Digital Electronics* will reflect the role of algebra in the course by asking that students have completed or are taking the course concurrent with Algebra 2 (or Running Start Algebra 2).

### **Computer Science:**

The *prerequisites for Computer Science Principles* will reflect the math challenges needed for the course, requiring students to have completed Algebra 1 or Algebra 1A and 1B.

### **English:**

*World Literature*, which has not run for the past few years, will be removed from the English course offerings

FLOW CHARTS

English

	Grade 9	Grade 10	Grade 11	Grade 12
<b>Required</b> <i>(options based on recommendation)</i>	English 9 Read English 9 Accelerated English 9	English 10 Read English 10 Accelerated English 10	Fundamentals of English U.S. Literature Honors U.S. Literature	Popular Reading Honors Literature
<b>Required</b> <i>(options based on recommendation)</i>		Writing College Composition (Running Start option)	AP English Language and Composition	AP English Literature and Composition
<b>Electives</b>			Film Studies Journalism 1 and 2 Memoirs and Biography 1 and 2 Science Fiction Poetry Advanced Writing	Film Studies Journalism 1 and 2 Memoirs and Biography 1 and 2 Science Fiction Poetry Advanced Writing

World Language

Grade 8	Grade 9	Grade 10	Grade 11	Grade 12
NO French/Spanish	Intro to Modern Language	French/Spanish 1	French/Spanish 2	French/Spanish 3
Reading	Intro to Modern Language	French/Spanish 1	French/Spanish 2	French/Spanish 3
Reading	French/Spanish 1 <i>*If recommended</i>	French/Spanish 2	French/Spanish 3	French/Spanish 4 OR Honors 4
French/Spanish 1	French/Spanish 1	French/Spanish 2	French/Spanish 3	French/Spanish 4 OR Honors 4
French/Spanish 1	French/Spanish 2 <i>*If recommended</i>	French/Spanish 3	French/Spanish 4	
French/Spanish 1	French/Spanish 2 <i>*If recommended</i>	French/Spanish 3	French/Spanish Honors 4	AP French/Spanish
			Latin 1	Latin 2

Social Studies

Grade 9	Grade 10	Grade 11	Grade 12
<p><b>US History (1860-present)</b></p>	<p><b>World Studies</b> <b>AP World History</b></p>	<p><b>Civics</b> <b>Economics</b></p>	<p><b>(Electives)</b> <b>AP US History</b> <b>AP Psychology</b> <b>Psychology</b> <b>Human Geography</b> <b>Sociology</b> <b>Contemporary Issues</b> <b>Legal Studies</b> <b>Senior Quest</b></p>
		<p><b>(Electives)</b> <b>AP US History</b> <b>AP Psychology</b> <b>Psychology</b> <b>Human Geography</b> <b>Sociology</b> <b>Contemporary Issues</b> <b>Legal Studies</b></p>	

Science

*\*Because there are many options for science sequence, please check for specific prerequisites at individual course descriptions*

Grade 9	Grade 10	Grade 11	Grade 12
<p><b>General Science</b>  <b>Physical Science with Earth Science</b>  <b>Accelerated Biology</b></p>	<p><b>Life Science</b>  <b>Biology</b>  <b>Accelerated Biology</b>  <b>Chemistry</b>  <b>Honors Chemistry</b></p>	<p><b>Chemistry Essentials</b>  <b>Chemistry and Society</b>  <b>Chemistry</b>  <b>Honors Chemistry</b></p>	<p><b>Anatomy &amp; Physiology</b>  <b>AP Biology</b>  <b>AP Chemistry</b>  <b>AP Environmental Science</b>  <b>AP Physics 1 or 2</b>  <b>Chemistry and Society</b>  <b>Honors Anatomy and Physiology</b>  <b>Honors Physics</b>  <b>Physics</b></p>
		<p><b>(Electives)</b>  <b>Anatomy &amp; Physiology</b>  <b>AP Biology</b>  <b>AP Chemistry</b>  <b>AP Environmental Science</b>  <b>AP Physics 1</b></p>	

## Math

Grade 8	Grade 9	Grade 10	Grade 11	Grade 12
Grade 8 Math	Algebra 1A	Algebra 1B	General Geometry	Running Start Algebra 2 with Quantitative Reasoning
Grade 8 Math	Algebra 1	Geometry	Running Start Algebra 2 with Quantitative Reasoning	Running Start Algebra 3/Trigonometry  Personal Finance or other 4 <sup>th</sup> year math experience
Grade 8 Math	Algebra 1	Geometry	Algebra 2	Running Start Algebra 3/Trigonometry  Precalculus
Algebra	Geometry	Algebra 2	Precalculus	Calculus  AP Statistics
Algebra	Accelerated Geometry	Accelerated Algebra 2	Honors Precalculus	AP Calculus  AP Statistics

**Engineering**

*\*Suggested pathways only; please check for specific prerequisites at individual course descriptions*

<b>Pathways</b>	<b>Recommended starting point for freshmen</b>	<b>Recommended starting point for sophomores/juniors</b>		
Recommended for students interested in mechanical/civil engineering	Engineering Technologies	Introduction to Engineering Design	Principles of Engineering	Digital Electronics
Recommended for students interested in electrical/computer/materials engineering	Engineering Technologies	Principles of Engineering	Digital Electronics	
	Computers and Technology	Principles of Engineering	Digital Electronics	
Recommended for students interested in computer science	Computers and Technology	<i>(Computer Science courses)</i>		

## Visual Arts

Starting point	(has prerequisites)	
Fundamentals of Art	Drawing (1, 2) Painting (1, 2) 3D Design	AP Art and Design
(Electives without prerequisites)  Ceramics  Introduction to Graphic Arts		
Digital Photography 1	Digital Photography 2	

# Coop FY21 Budget Detail for New Items-Round 4.0

As of: 9/30/19

As of: 10/18/19

As of: 11/15/19

As of: 12/4/19

Round 1.0 Personnel	
Cost	Descrip
<b>HBHS</b>	
\$12,000	Teacher-French (.2)
-\$43,060	Para Positions - RIF (2)
<b>Stipends</b>	
\$200	New-NHS Art
\$200	New-Greek & Latin Club
\$2,000	Add to-Guitar Night
\$2,000	Add to-HB The Change
<b>Shared Positions-All FT w/Benefits-Fam H&amp;D</b>	
\$20,972	SAU Directed Nurse Sub (.258)
\$17,038	SAU Directed Facilities Sub (.258)
\$5,915	SAU Directed F/S Sub (.258)
\$20,325	SAU Directed Sub (.258)
<b>\$37,589</b>	
<b>HBMS</b>	
\$12,000	Teacher-French (.2)
<b>Stipends</b>	
\$4,300	After School Detention 2 days/wk
<b>Shared Positions-All FT w/Benefits-Fam H&amp;D</b>	
\$20,972	SAU Directed Nurse Sub (.258)
\$17,038	SAU Directed Facilities Sub (.258)
\$5,915	SAU Directed F/S Sub (.258)
\$20,325	SAU Directed Sub (.258)
<b>\$80,549</b>	
<b>\$118,139</b>	<b>Total</b>

Round 2.0 Personnel	
Cost	Descrip
<b>HBHS</b>	
\$12,000	Teacher-French (.2)
-\$43,060	Para Positions - RIF (2)
<b>Stipends</b>	
\$200	New-NHS Art
\$200	New-Greek & Latin Club
\$2,000	Add to-Guitar Night
\$2,000	Add to-HB The Change
<b>Shared Positions-All FT w/Benefits-Fam H&amp;D</b>	
\$20,972	SAU Directed Nurse Sub (.258)
\$17,038	SAU Directed Facilities Sub (.258)
\$5,915	SAU Directed F/S Sub (.258)
\$20,325	SAU Directed Sub (.258)
<b>\$37,589</b>	
<b>HBMS</b>	
\$12,000	Teacher-French (.2)
<b>Stipends</b>	
\$4,300	After School Detention 2 days/wk
<b>Shared Positions-All FT w/Benefits-Fam H&amp;D</b>	
\$20,972	SAU Directed Nurse Sub (.258)
\$17,038	SAU Directed Facilities Sub (.258)
\$5,915	SAU Directed F/S Sub (.258)
\$20,325	SAU Directed Sub (.258)
<b>\$80,549</b>	
<b>\$118,139</b>	<b>Total</b>

Round 3.5 Personnel	
Cost	Descrip
<b>HBHS</b>	
\$12,000	Teacher-French (.2)
-\$43,060	Para Positions - RIF (2)
<b>CTE Transportation Changes</b>	
\$66,217	CTE Van Drivers (2)
\$5,158	CTE Van Mgmt (.13)
-\$71,375	CTE Transportation Vendor
<b>Stipends</b>	
\$200	New-NHS Art
\$200	New-Greek & Latin Club
\$2,000	Add to-Guitar Night
\$2,000	Add to-HB The Change
<b>Shared Positions-All FT w/Benefits-Fam H&amp;D</b>	
\$18,308	SAU Directed Nurse Sub (.258)
\$0	SAU Directed Facilities Sub (.258)
\$0	SAU Directed F/S Sub (.258)
\$0	SAU Directed Sub (.258)
<b>-\$8,352</b>	
<b>HBMS</b>	
\$12,000	Teacher-French (.2)
<b>Stipends</b>	
\$2,000	After School Detention 2 days/wk @ 1 hr @\$25
<b>Shared Positions-All FT w/Benefits-Fam H&amp;D</b>	
\$18,308	SAU Directed Nurse Sub (.258)
\$0	SAU Directed Facilities Sub (.258)
\$0	SAU Directed F/S Sub (.258)
\$0	SAU Directed Sub (.258)
<b>\$32,308</b>	
<b>\$23,956</b>	<b>Total</b>

Round 4.0 Personnel	
Cost	Descrip
<b>HBHS</b>	
\$12,000	Teacher-French (.2)
-\$43,060	Para Positions - RIF (2)
<b>CTE Transportation Changes</b>	
\$66,217	CTE Van Drivers (2)
\$5,158	CTE Van Mgmt (.13)
-\$71,375	CTE Transportation Vendor
-\$69,317	District Maint Supervisor
\$33,093	Add'l Custodian
-\$42,000	AD to Part-Time
<b>Stipends</b>	
\$200	New-NHS Art
\$200	New-Greek & Latin Club
\$2,000	Add to-Guitar Night
\$2,000	Add to-HB The Change
<b>Shared Positions-All FT w/Benefits-Fam H&amp;D</b>	
\$18,308	SAU Directed Nurse Sub (.258)
\$0	SAU Directed Facilities Sub (.258)
\$0	SAU Directed F/S Sub (.258)
\$0	SAU Directed Sub (.258)
<b>-\$86,576</b>	
<b>HBMS</b>	
\$12,000	Teacher-French (.2)
<b>Stipends</b>	
\$2,000	After School Detention 2 days/wk @ 1 hr @\$25
<b>Shared Positions-All FT w/Benefits-Fam H&amp;D</b>	
\$18,308	SAU Directed Nurse Sub (.258)
\$0	SAU Directed Facilities Sub (.258)
\$0	SAU Directed F/S Sub (.258)
\$0	SAU Directed Sub (.258)
<b>\$32,308</b>	
<b>-\$54,268</b>	<b>Total</b>

Round 1.0 Academics	
Cost	Descrip
<b>HBHS</b>	
<b>Textbook/Workbooks Rotation</b>	
	(only over 5k & not lang. arts)
\$12,375	TXT-Physics-Honors (new)
\$16,838	TXT-Algebra I & II-3yr plan
\$2,668	WB-AP French & Spanish Prep
\$1,201	WB-French I-IV
\$3,394	WB-French AP & Honors
\$2,417	WB-Spanish AP & Honors
\$108	WB-World Language-IML
\$2,136	WB-Spanish I-IV
<b>\$41,137</b>	
<b>HBMS</b>	
\$3,400	Newsela SS, Eng & Sci
\$2,700	Graphing Calculators-Rplcmnt 20 @ \$620
\$4,620	Heart Monitor - PE 28 @ \$165
<b>\$10,720</b>	
<b>\$51,857</b>	<b>Total</b>

Round 2.0 Academics	
Cost	Descrip
<b>HBHS</b>	
<b>Textbook/Workbooks Rotation</b>	
	(only over 5k & not lang. arts)
\$12,375	TXT-Physics-Honors (new)
\$16,838	TXT-Algebra I & II-3yr plan
\$2,668	WB-AP French & Spanish Prep
\$1,201	WB-French I-IV
\$3,394	WB-French AP & Honors
\$2,417	WB-Spanish AP & Honors
\$108	WB-World Language-IML
\$2,136	WB-Spanish I-IV
<b>\$41,137</b>	
<b>HBMS</b>	
\$0	Newsela SS, Eng & Sci
\$1,425	Graphing Calculators-Rplcmnt 10 @ \$140+Shipping (\$25)
\$0	Heart Monitor - PE 28 @ \$165
<b>\$1,425</b>	
<b>\$42,562</b>	<b>Total</b>

Round 3.5 Academics	
Cost	Descrip
<b>HBHS</b>	
<b>Textbook/Workbooks Rotation</b>	
	(only over 5k & not lang. arts)
\$12,375	TXT-Physics-Honors (new)
\$16,838	TXT-Algebra I & II-3yr plan
\$2,668	WB-AP French & Spanish Prep
\$1,201	WB-French I-IV
\$3,394	WB-French AP & Honors
\$2,417	WB-Spanish AP & Honors
\$108	WB-World Language-IML
\$2,136	WB-Spanish I-IV
\$7,600	Piano Repair (125 YO)-5
\$3,500	French Horn Rplcmnt-4
\$6,000	Band Riser Rplcmnt-2
\$8,500	Choral Riser Rplcmnt-1
\$3,000	STEM tables, chairs, storage-3 Tech Ed
<b>\$69,737</b>	
<b>HBMS</b>	
\$0	Newsela SS, Eng & Sci
\$1,425	Graphing Calculators-Rplcmnt 10 @ \$140+Shipping (\$25)
\$0	Heart Monitor - PE 28 @ \$165
<b>\$1,425</b>	
<b>\$71,162</b>	<b>Total</b>

Round 4.0 Academics	
Cost	Descrip
<b>HBHS</b>	
<b>Textbook/Workbooks Rotation</b>	
	(only over 5k & not lang. arts)
\$12,375	TXT-Physics-Honors (new)
\$16,838	TXT-Algebra I & II-3yr plan
\$2,668	WB-AP French & Spanish Prep
\$1,201	WB-French I-IV
\$3,394	WB-French AP & Honors
\$2,417	WB-Spanish AP & Honors
\$108	WB-World Language-IML
\$2,136	WB-Spanish I-IV
\$7,600	Piano Repair (125 YO)-5
\$3,500	French Horn Rplcmnt-4
\$6,000	Band Riser Rplcmnt-2
\$8,500	Choral Riser Rplcmnt-1
\$3,000	STEM tables, chairs, storage-3 Tech Ed
<b>\$69,737</b>	
<b>HBMS</b>	
\$0	Newsela SS, Eng & Sci
\$1,425	Graphing Calculators-Rplcmnt 10 @ \$140+Shipping (\$25)
\$0	Heart Monitor - PE 28 @ \$165
<b>\$1,425</b>	
<b>\$71,162</b>	<b>Total</b>

Round 1.0 New Computer Equip	
Cost	Descrip
<b>HBHS</b>	
<b>New Tech Plan - Phase 1</b>	
<b>Engineering</b>	
\$31,250	Lenovo Y540-25@\$1250/ea \$600 Cart: 1 @ \$600
<b>Computer Science</b>	
\$32,500	Dell GG3 15-25 @ \$1300/ea \$600 Cart: 1 @ \$600

Round 2.0 New Computer Equip	
Cost	Descrip
<b>HBHS</b>	
<b>New Tech Plan - Phase 1</b>	
<b>Engineering</b>	
\$31,250	Lenovo Y540-25@\$1250/ea \$600 Cart: 1 @ \$600
<b>Computer Science</b>	
\$32,500	Dell GG3 15-25 @ \$1300/ea \$600 Cart: 1 @ \$600

Round 3.5 New Computer Equip	
Cost	Descrip
<b>HBHS</b>	
<b>New Tech Plan - Phase 1</b>	
<b>Engineering</b>	
\$31,250	Lenovo Y540-25@\$1250/ea \$600 Cart: 1 @ \$600
<b>Computer Science</b>	
\$32,500	Dell GG3 15-25 @ \$1300/ea \$600 Cart: 1 @ \$600

Round 4.0 New Computer Equip	
Cost	Descrip
<b>HBHS</b>	
<b>New Tech Plan - Phase 1</b>	
<b>Engineering</b>	
\$31,250	Lenovo Y540-25@\$1250/ea \$600 Cart: 1 @ \$600
<b>Computer Science</b>	
\$27,500	Dell GG3 15-25 @ \$1100/ea \$600 Cart: 1 @ \$600

<b>Physics</b>	
\$32,200	Standard Lenovo-46@\$700/ea
\$600	Cart: 1 @ \$600
<b>\$97,750</b>	
<b>HBMS</b>	
\$5,000	Chromebooks
	North End - 20 @ \$250
\$800	Cart-North End
\$5,000	Chromebooks
	English - 20 @ \$250
\$800	Cart-English
<b>\$11,600</b>	
<b>\$109,350</b>	<b>Total</b>

<b>Physics</b>	
\$32,200	Standard Lenovo-46@\$700/ea
\$600	Cart: 1 @ \$600
<b>\$97,750</b>	
<b>HBMS</b>	
\$5,000	Chromebooks
	Tech Ed, Art, Health - 20 @ \$250
\$800	Cart-North End
\$5,000	Chromebooks
	English - 20 @ \$250
\$800	Cart-English
<b>\$11,600</b>	
<b>\$109,350</b>	<b>Total</b>

<b>Physics</b>	
\$32,200	Standard Lenovo-46@\$700/ea
\$600	Cart: 1 @ \$600
<b>\$97,750</b>	
<b>HBMS</b>	
\$5,000	Chromebooks
	Tech Ed, Art, Health - 20 @ \$250
\$800	Cart-North End
\$5,000	Chromebooks
	English - 20 @ \$250
\$800	Cart-English
\$660	Elmo-World Language
<b>\$12,260</b>	
<b>\$110,010</b>	<b>Total</b>

<b>Physics</b>	
\$32,200	Standard Lenovo-46@\$700/ea
\$600	Cart: 1 @ \$600
<b>\$92,750</b>	
<b>HBMS</b>	
\$5,000	Chromebooks
	Tech Ed, Art, Health - 20 @ \$250
\$800	Cart-North End
\$5,000	Chromebooks
	English - 20 @ \$250
\$800	Cart-English
\$660	Elmo-World Language
<b>\$12,260</b>	
<b>\$105,010</b>	<b>Total</b>

Round 1.0	
Rplcmt Computer Equip-Current	
Cost	Descrip
<b>HBHS</b>	
\$7,000	Staff Laptops
	10 @ \$700
\$0	Server
\$700	Printer-Library
\$2,700	Projectors
	6 @ \$450 (1 is Library)
\$0	Copiers
\$0	Switches
<b>Windows 10 Issue</b>	
\$16,800	Laptops
	24 @ \$700
\$19,375	Desktops
	25 @ \$775
<b>\$46,575</b>	
<b>HBMS</b>	
\$7,000	Staff Laptops
	10 @ \$700
\$0	Server
\$600	Printer

Round 2.0	
Rplcmt Computer Equip	
Cost	Descrip
<b>HBHS</b>	
\$7,000	Staff Laptops
	10 @ \$700
\$0	Server
\$700	Printer-Library
\$2,700	Projectors
	6 @ \$450 (1 is Library)
\$0	Copiers
\$0	Switches
<b>Windows 10 Issue</b>	
\$2,100	Laptops
	3 @ \$700
\$19,375	Desktops
	25 @ \$775
<b>\$31,875</b>	
<b>HBMS</b>	
\$7,000	Staff Laptops
	10 @ \$700
\$0	Server
\$600	Printer

Round 3.5	
Rplcmt Computer Equip	
Cost	Descrip
<b>HBHS</b>	
\$7,000	Staff Laptops
	10 @ \$700
\$0	Server
\$700	Printer-Library
\$2,700	Projectors
	6 @ \$450 (1 is Library)
\$0	Copiers
\$0	Switches
<b>Windows 10 Issue</b>	
\$2,100	Laptops
	3 @ \$700
\$19,375	Desktops
	25 @ \$775
\$6,750	Chromebooks
	27 @ \$250 (Library)
<b>\$38,625</b>	
<b>HBMS</b>	
\$7,000	Staff Laptops
	10 @ \$700
\$0	Server
\$600	Printer

Round 4.0	
Rplcmt Computer Equip	
Cost	Descrip
<b>HBHS</b>	
\$7,000	Staff Laptops
	10 @ \$700
\$0	Server
\$700	Printer-Library
\$2,700	Projectors
	6 @ \$450 (1 is Library)
\$0	Copiers
\$0	Switches
<b>Windows 10 Issue</b>	
\$2,100	Laptops
	3 @ \$700
\$19,375	Desktops
	25 @ \$775
\$7,000	Chromebooks
	28 @ \$250 (Library)
\$2,100	Laptops
	3 @ \$700 (Library)
<b>\$40,975</b>	
<b>HBMS</b>	
\$7,000	Staff Laptops
	10 @ \$700
\$0	Server
\$600	Printer

	1 - Guidance
\$2,250	Projectors
	5 @ \$450
\$0	Copiers
\$0	Switches
\$480	HDMI Cords - 24 @ \$20
<b>Windows 10 Issue</b>	
\$25,900	Laptops
	37 @ \$700
\$23,250	Desktops
	30 @ \$775
<b>\$59,480</b>	
<b>\$106,055</b>	<b>Total</b>

	1 - Guidance
\$2,250	Projectors
	5 @ \$450 (3 comp labs, 2 music)
\$0	Copiers
\$0	Switches
\$480	HDMI Cords - 24 @ \$20
<b>Windows 10 Issue</b>	
\$6,300	Laptops
	9 @ \$700
\$20,925	Desktops
	27 @ \$775
<b>\$37,555</b>	
<b>\$69,430</b>	<b>Total</b>

	1 - Guidance
\$2,250	Projectors
	5 @ \$450 (3 comp labs, 2 music)
\$0	Copiers
\$0	Switches
\$480	HDMI Cords - 24 @ \$20
<b>Windows 10 Issue</b>	
\$0	Laptops
	0 @ \$700
\$19,375	Desktops-Lab 112
	25 @ \$775
<b>\$29,705</b>	
<b>\$68,330</b>	<b>Total</b>

	1 - Guidance
\$2,250	Projectors
	5 @ \$450 (3 comp labs, 2 music)
\$0	Copiers
\$0	Switches
\$480	HDMI Cords - 24 @ \$20
<b>Windows 10 Issue</b>	
\$0	Laptops
	0 @ \$700
\$19,375	Desktops-Lab 112
	25 @ \$775
<b>\$29,705</b>	
<b>\$70,680</b>	<b>Total</b>

Round 1.0 Shared Services/Software	
Cost	Descrip
<b>HBHS</b>	
\$2,500	Barracuda Firewall
\$875	PD Fingerprinting Machine SC
\$1,000	Core Routing Switch
<b>\$4,375</b>	
<b>HBMS</b>	
\$2,500	Barracuda Firewall
\$875	PD Fingerprinting Machine SC
\$1,000	Core Routing Switch
<b>\$4,375</b>	
<b>\$8,750</b>	<b>Total</b>

Round 2.0 Shared Services/Software	
Cost	Descrip
<b>HBHS</b>	
\$2,500	Barracuda Firewall
\$875	PD Fingerprinting Machine SC
\$1,000	Core Routing Switch
<b>\$4,375</b>	
<b>HBMS</b>	
\$2,500	Barracuda Firewall
\$875	PD Fingerprinting Machine SC
\$1,000	Core Routing Switch
<b>\$4,375</b>	
<b>\$8,750</b>	<b>Total</b>

Round 3.5 Shared Services/Software	
Cost	Descrip
<b>HBHS</b>	
\$2,500	Barracuda Firewall
\$875	PD Fingerprinting Machine SC
\$1,000	Core Routing Switch
<b>\$4,375</b>	
<b>HBMS</b>	
\$2,500	Barracuda Firewall
\$875	PD Fingerprinting Machine SC
\$1,000	Core Routing Switch
<b>\$4,375</b>	
<b>\$8,750</b>	<b>Total</b>

Round 4.0 Shared Services/Software	
Cost	Descrip
<b>HBHS</b>	
\$2,500	Barracuda Firewall
\$875	PD Fingerprinting Machine SC
\$1,000	Core Routing Switch
<b>\$4,375</b>	
<b>HBMS</b>	
\$2,500	Barracuda Firewall
\$875	PD Fingerprinting Machine SC
\$1,000	Core Routing Switch
<b>\$4,375</b>	
<b>\$8,750</b>	<b>Total</b>

Round 1.0 Safety Issues	
Cost	Descrip
<b>HBHS</b>	
\$22,000	Cameras-Phase 2 of 4
	State PSIF application not approved
	Total remaining cost - \$65K
\$6,500	Performing Arts Winch
<b>\$28,500</b>	
<b>HBMS</b>	

Round 2.0 Safety Issues	
Cost	Descrip
<b>HBHS</b>	
\$22,000	Cameras-Phase 2 of 4
	State PSIF application not approved
	Total remaining cost - \$65K
\$6,500	Performing Arts Winch
<b>\$28,500</b>	
<b>HBMS</b>	

Round 3.5 Safety Issues	
Cost	Descrip
<b>HBHS</b>	
\$22,000	Cameras-Phase 2 of 4
	State PSIF application not approved
	Total remaining cost - \$65K
\$7,000	Performing Arts Winch
<b>\$29,000</b>	
<b>HBMS</b>	

Round 4.0 Safety Issues	
Cost	Descrip
<b>HBHS</b>	
\$22,000	Cameras-Phase 2 of 4
	State PSIF application not approved
	Total remaining cost - \$65K
\$0	Performing Arts Winch
<b>\$22,000</b>	
<b>HBMS</b>	

\$1,000	Crash Door Locks North End Doors
<b>\$1,000</b>	
<b>\$29,500</b>	<b>Total</b>

\$0	Crash Door Locks North End Doors
<b>\$0</b>	
<b>\$28,500</b>	<b>Total</b>

\$0	Crash Door Locks North End Doors
<b>\$0</b>	
<b>\$29,000</b>	<b>Total</b>

\$0	Crash Door Locks North End Doors
<b>\$0</b>	
<b>\$22,000</b>	<b>Total</b>

Round 1.0 Athletics	
Cost	Descrip
<b>HBHS</b>	
\$4,600	Field Hockey Goals
\$3,200	Soccer Scoreboard
\$5,000	Ice Machine
<b>\$12,800</b>	
<b>HBMS</b>	
\$4,300	Carbon Volleyball Pole System
<b>\$4,300</b>	
<b>\$17,100</b>	<b>Total</b>

Round 2.0 Athletics	
Cost	Descrip
<b>HBHS</b>	
\$4,600	Field Hockey Goals
\$3,200	Soccer Scoreboard
\$5,000	Ice Machine
<b>\$12,800</b>	
<b>HBMS</b>	
\$4,300	Carbon Volleyball Pole System
<b>\$4,300</b>	
<b>\$17,100</b>	<b>Total</b>

Round 3.5 Athletics	
Cost	Descrip
<b>HBHS</b>	
\$4,600	Field Hockey Goals
\$3,200	Soccer Scoreboard
\$5,000	Ice Machine
<b>\$12,800</b>	
<b>HBMS</b>	
\$4,300	Carbon Volleyball Pole System
<b>\$4,300</b>	
<b>\$17,100</b>	<b>Total</b>

Round 4.0 Athletics	
Cost	Descrip
<b>HBHS</b>	
\$4,600	Field Hockey Goals
\$0	Soccer Scoreboard
\$5,000	Ice Machine
<b>\$9,600</b>	
<b>HBMS</b>	
\$4,300	Carbon Volleyball Pole System
<b>\$4,300</b>	
<b>\$13,900</b>	<b>Total</b>

Round 1.0 Facilities/Maintenance	
Cost	Descrip
<b>HBHS</b>	
\$19,000	Intercom Rplcmnt
\$50,000	Roof Section-Phase 3
\$20,000	Masonry Work
\$50,000	Main Office Security Upgrade
\$26,700	Bldg System Evaluation
\$60,000	Road Paving Phase 1 Jeff Smith to Bridge
\$4,000	HVAC Upgrades
\$10,000	Air Handling Upgrades
\$2,000	Window Blinds
\$3,000	Window Screens
\$2,500	Window Seals
\$16,733	Cafeteria Flooring
\$20,000	Painting-Phase 2
\$5,000	Plumbing Fixtures
\$2,000	LED Light Rplcmnt-Phase 1
\$2,500	Hydraulic Actuator Pump
\$7,800	Storage Shed

Round 2.0 Facilities/Maintenance	
Cost	Descrip
<b>HBHS</b>	
\$19,000	Intercom Rplcmnt
\$50,000	Roof Section-Phase 3
\$20,000	Masonry Work
\$50,000	Main Office Security Upgrade
\$26,700	Bldg System Evaluation
\$60,000	Road Paving Phase 1 Jeff Smith to Bridge
\$4,000	HVAC Upgrades
\$10,000	Air Handling Upgrades
\$2,000	Window Blinds
\$3,000	Window Screens
\$2,500	Window Seals
\$16,733	Cafeteria Flooring
\$20,000	Painting-Phase 2
\$5,000	Plumbing Fixtures
\$2,000	LED Light Rplcmnt-Phase 1
\$2,500	Hydraulic Actuator Pump
\$0	Storage Shed

Round 3.5 Facilities/Maintenance	
Cost	Descrip
<b>HBHS</b>	
\$19,000	Intercom Rplcmnt
\$0	Roof Section-Phase 3
\$0	Masonry Work
\$0	Main Office Security Upgrade
\$0	Bldg System Evaluation
\$0	Road Paving Phase 1 Jeff Smith to Bridge
\$0	HVAC Upgrades
\$0	Air Handling Upgrades
\$2,000	Window Blinds
\$2,000	Window Screens
\$2,500	Window Seals
\$0	Cafeteria Flooring
\$0	Painting-Phase 2
\$0	Plumbing Fixtures
\$4,000	LED Light Rplcmnt-Phase 1
\$2,500	Hydraulic Actuator Pump
\$0	Storage Shed

Round 4.0 Facilities/Maintenance	
Cost	Descrip
<b>HBHS</b>	
\$19,000	Intercom Rplcmnt
\$0	Roof Section-Phase 3
\$0	Masonry Work
\$0	Main Office Security Upgrade
\$0	Bldg System Evaluation
\$60,000	Road Paving Phase 1 Jeff Smith to Bridge
\$5,000	HVAC Upgrades
\$0	Air Handling Upgrades
\$2,000	Window Blinds
\$2,000	Window Screens
\$2,500	Window Seals
\$16,800	Cafeteria Flooring
\$20,000	Painting-Phase 2
\$0	Plumbing Fixtures
\$4,000	LED Light Rplcmnt-Phase 1
\$2,500	Hydraulic Actuator Pump
\$0	Storage Shed

\$50,000	Egress Study-NRPC Plan
\$33,000	Student Restroom Partitions
<b>\$384,233</b>	

<b>HBMS</b>	
\$5,700	MPR Tables/Chairs-Phase 3
\$19,000	Intercom Rplcmnt
\$20,000	Roof Repairs
\$26,000	Bldg Systems Evaluation
\$1,000	Nurse Cot
\$1,000	Student Chairs-20 @ \$50
\$57,000	Window Replacement-Phase 1
\$20,000	Paving Issue
\$20,000	Life Skills Remodel
\$50,000	Water System Study
\$8,000	Air Handling Repairs
\$10,000	HVAC Repairs
\$2,000	Chilled Water Pumps
\$5,000	Electrical Panels
\$2,000	LED Light Rplcmnt-Phase 1
\$70,000	Elevator Replacement
<b>Asbestos Abatement-flooring**</b>	
\$22,000	Asbestos Abatement
\$8,000	Flooring Rplcmnt
<b>\$346,700</b>	
<b>\$730,933</b>	<b>Total</b>

\$0	Egress Study-NRPC Plan
\$0	Student Restroom Partitions
<b>\$293,433</b>	

<b>HBMS</b>	
\$5,700	MPR Tables/Chairs-Phase 3
\$19,000	Intercom Rplcmnt
\$20,000	Roof Repairs
\$26,000	Bldg Systems Evaluation
\$1,000	Nurse Cot
\$1,000	Student Chairs-20 @ \$50
\$0	Window Replacement-Phase 1
\$25,525	Paving Issue
\$0	Life Skills Remodel
\$0	Water System Study
\$8,000	Air Handling Repairs
\$10,000	HVAC Repairs
\$2,000	Chilled Water Pumps
\$5,000	Electrical Panels
\$2,000	LED Light Rplcmnt-Phase 1
\$0	Elevator Replacement
<b>Asbestos Abatement-flooring**</b>	
\$54,050	Asbestos Abatement
\$30,000	Flooring Rplcmnt
<b>\$209,275</b>	
<b>\$502,708</b>	<b>Total</b>

\$0	Egress Study-NRPC Plan
\$0	Student Restroom Partitions
\$0	Fire Pump Coupler
\$5,000	Reline Parking Lot/Driveway
<b>\$37,000</b>	

<b>HBMS</b>	
\$6,000	MPR Tables/Chairs-Phase 3
\$19,000	Intercom Rplcmnt
\$0	Roof Repairs
\$0	Bldg Systems Evaluation
\$1,000	Nurse Cot
\$1,000	Student Chairs-20 @ \$50
\$0	Window Replacement-Phase 1
\$0	Paving Issue
\$0	Life Skills Remodel
\$0	Water System Study
\$0	Air Handling Repairs
\$0	HVAC Repairs
\$2,000	Chilled Water Pumps
\$0	Electrical Panels
\$4,000	LED Light Rplcmnt-Phase 1
\$0	Elevator Replacement
<b>Asbestos Abatement-flooring**</b>	
\$0	Asbestos Abatement
\$30,000	Flooring Rplcmnt
<b>\$63,000</b>	
<b>\$100,000</b>	<b>Total</b>

\$0	Egress Study-NRPC Plan
\$0	Student Restroom Partitions
\$4,000	Fire Pump Coupler
\$0	Reline Parking Lot/Driveway
<b>\$137,800</b>	

<b>HBMS</b>	
\$6,000	MPR Tables/Chairs-Phase 3
\$19,000	Intercom Rplcmnt
\$0	Roof Repairs
\$0	Bldg Systems Evaluation
\$1,000	Nurse Cot
\$1,000	Student Chairs-20 @ \$50
\$13,000	Window Replacement-Phase 1
\$25,525	Paving Issue
\$0	Life Skills Remodel
\$0	Water System Study
\$0	Air Handling Repairs
\$10,000	HVAC Repairs
\$2,000	Chilled Water Pumps
\$0	Electrical Panels
\$4,000	LED Light Rplcmnt-Phase 1
\$0	Elevator Replacement
<b>Asbestos Abatement-flooring**</b>	
\$0	Asbestos Abatement
\$30,000	Flooring Rplcmnt
<b>\$111,525</b>	
<b>\$249,325</b>	<b>Total</b>

<b>\$1,171,684</b>	<b>Grand Total</b>
--------------------	--------------------

<b>\$896,539</b>	<b>Grand Total</b>
------------------	--------------------

<b>\$428,307</b>	<b>Grand Total</b>
------------------	--------------------

<b>\$486,558</b>	<b>Grand Total</b>
------------------	--------------------

<b>Round 1.0 Warrant Articles</b>	
Cost	Descrip
\$24,449,531	Operating Budget
\$81,139	HESSA Contract
\$100,000	Contingency
\$931,066	SAU Assessment-Estimate
\$67,000	Athletic Trust
\$75,000	Maintenance Trust
\$25,000	Special Ed Trust
<b>\$25,728,736</b>	<b>Warrant Total</b>

<b>Round 2.0 Warrant Articles</b>	
Cost	Descrip
\$24,110,076	Operating Budget
\$81,139	HESSA Contract
\$100,000	Contingency
\$931,066	SAU Assessment-Estimate
\$67,000	Athletic Trust
\$75,000	Maintenance Trust
\$25,000	Special Ed Trust
<b>\$25,389,280</b>	<b>Warrant Total</b>

<b>Round 3.5 Warrant Articles</b>	
Cost	Descrip
\$23,484,041	Operating Budget
\$81,139	HESSA Contract
\$100,000	Contingency
\$910,255	SAU Assessment
\$67,000	Athletic Trust
\$310,000	Maintenance Trust
\$25,000	Special Ed Trust
<b>\$24,977,435</b>	<b>Warrant Total</b>

<b>Round 4.0 Warrant Articles</b>	
Cost	Descrip
\$23,493,597	Operating Budget
\$81,139	HESSA Contract
\$100,000	Contingency
\$910,255	SAU Assessment
\$67,000	Athletic Trust
\$200,000	Maintenance Trust
\$25,000	Special Ed Trust
<b>\$24,876,991</b>	<b>Warrant Total</b>

Round 1.0 Maintenance Trust	
Cost	Descrip
\$85,000	Estimated Beginning Balance
\$75,000	Add in FY21
<b>\$160,000</b>	<b>Total</b>

Round 2.0 Maintenance Trust	
Cost	Descrip
\$85,000	Estimated Beginning Balance
\$75,000	Add in FY21
<b>\$160,000</b>	<b>Total</b>

Round 3.5 Maintenance Trust	
Cost	Descrip
\$85,000	Estimated Beginning Balance
\$310,000	Add in FY21
\$50,000	HS-Roof Section-Phase 3
\$20,000	HS-Masonry Work
\$5,000	HS-HVAC Upgrades
\$60,000	HS-Road Paving Phase 1 Jeff Smith to Bridge
\$54,050	MS-Asbestos Abatement
\$20,000	MS-Roof Repairs
\$25,525	MS-Paving Issue
\$10,000	MS-HVAC Repairs
\$5,000	HS-Plumbing Fixtures
\$10,000	HS-Air Handling Upgrades
\$20,000	HS-Painting-Phase 2
\$16,800	HS-Cafeteria Flooring
\$13,000	MS-Window Rplcmnt-Phase 1
\$4,000	HS-Fire Pump Coupler
<b>\$81,625</b>	<b>Total</b>

Round 4.0 Maintenance Trust	
Cost	Descrip
\$85,000	Estimated Beginning Balance
\$200,000	Add in FY21
\$50,000	HS-Roof Section-Phase 3
\$20,000	HS-Masonry Work
\$0	HS-HVAC Upgrades
\$0	HS-Road Paving Phase 1 Jeff Smith to Bridge
\$54,050	MS-Asbestos Abatement
\$20,000	MS-Roof Repairs
\$0	MS-Paving Issue
\$0	MS-HVAC Repairs
\$5,000	HS-Plumbing Fixtures
\$10,000	HS-Air Handling Upgrades
\$0	HS-Painting-Phase 2
\$0	HS-Cafeteria Flooring
\$0	MS-Window Rplcmnt-Phase 1
\$0	HS-Fire Pump Coupler
\$40,000	MS-Elevator Rplcmnt-Hold
<b>\$85,950</b>	<b>Total</b>

\$11,600	2225.734.03
\$97,750	2225.734.04
\$59,480	2225.738.03
\$46,575	2225.738.04
\$447,644	2400.899.03
\$508,634	2400.899.04
<b>\$1,171,684</b>	<b>Total New Items</b>

\$11,600	2225.734.03
\$97,750	2225.734.04
\$37,555	2225.738.03
\$31,875	2225.738.04
\$299,924	2400.899.03
\$417,834	2400.899.04
<b>\$896,539</b>	<b>Total New Items</b>

\$12,260	2225.734.03
\$97,750	2225.734.04
\$29,705	2225.738.03
\$38,625	2225.738.04
\$105,408	2400.899.03
\$144,559	2400.899.04
<b>\$428,307</b>	<b>Total New Items</b>

\$12,260	2225.734.03
\$92,750	2225.734.04
\$29,705	2225.738.03
\$40,975	2225.738.04
\$153,933	2400.899.03
\$156,935	2400.899.04
<b>\$486,558</b>	<b>Total New Items</b>

Round 2.0 Relief from Guidance Request	
(The numbers below are included in the numbers above)	
Cost	Descrip
\$85,325	Windows 10 Issue
\$54,050	Asbestos Abatement
<b>\$139,375</b>	<b>Total</b>

Round 3.5 Relief from Guidance Request	
(The numbers below are included in the numbers above)	
Cost	Descrip
\$47,600	Windows 10 Issue
\$0	Asbestos Abatement
<b>\$47,600</b>	<b>Total</b>

Round 4.0 Relief from Guidance Request	
(The numbers below are included in the numbers above)	
Cost	Descrip
\$0	Windows 10 Issue
\$0	Asbestos Abatement
<b>\$0</b>	<b>Total</b>

\*\* Asbestos Flooring Abatement - Does not include tile replacement Closets

Custodial-U12	\$3,600	
Custodial-U6	\$6,100	
Custodial-U16	\$6,100	
IT-U7	\$3,600	
<b>Classrooms</b>		
108	\$11,000	
109	\$11,000	
110+bathroom	\$12,650	
	<b>\$54,050</b>	
Replacement Flooring	\$30,000	Estimated not quoted
<b>Total</b>	<b>\$84,050</b>	

## Coop FY21 Round 4.0

Account	Description	FY18 Actual	FY19 Actual	FY20 Budget	FY21 Round 3.5	FY21 Round 4.0	\$ Diff	% Diff
10.1100.111.00.0	New Hire Orientation Wages	\$4,638.39	\$3,558.56	\$4,500.00	\$4,500.00	\$4,500.00	\$0.00	0.00%
10.1100.112.00.0	Teacher Lane Changes	\$0.00	\$0.00	\$59,345.86	\$136,313.10	\$136,313.10	\$76,967.24	129.69%
10.1100.128.03.0	Substitutes, Ms	\$30,569.15	\$37,197.08	\$36,683.00	\$39,000.00	\$39,000.00	\$2,317.00	6.32%
10.1100.128.04.0	Substitutes, Sr High	\$62,492.40	\$66,744.71	\$74,990.00	\$74,990.00	\$74,990.00	\$0.00	0.00%
10.1100.320.03.0	Homebound Instruction-Non-EE	\$0.00	\$0.00	\$250.00	\$250.00	\$250.00	\$0.00	0.00%
10.1100.320.04.0	Homebound Instruction-Non-EE	\$0.00	\$0.00	\$1,000.00	\$1,000.00	\$1,000.00	\$0.00	0.00%
10.1100.328.00.0	Contracted Services-Substitute Sta	\$0.00	\$9,906.25	\$0.00	\$0.00	\$0.00	\$0.00	#DIV/0!
10.1100.430.03.0	Equipment Repair	\$189.00	\$0.00	\$0.00	\$0.00	\$0.00	\$0.00	#DIV/0!
10.1100.580.04.0	Tutoring Mileage	\$0.00	\$131.45	\$0.00	\$0.00	\$0.00	\$0.00	#DIV/0!
10.1100.613.03.0	Testing	\$0.00	\$95.50	\$0.00	\$100.00	\$100.00	\$100.00	#DIV/0!
10.1100.614.03.0	Expendable Supplies	\$11,074.07	\$13,176.47	\$12,500.00	\$13,700.00	\$13,700.00	\$1,200.00	9.60%
10.1100.614.04.0	Expendable Supplies	\$10,477.08	\$9,927.64	\$12,000.00	\$11,500.00	\$11,500.00	-\$500.00	-4.17%
10.1100.616.04.0	Awards	\$672.97	\$801.47	\$700.00	\$700.00	\$700.00	\$0.00	0.00%
10.1100.642.03.0	Publications	\$1,787.78	\$2,058.21	\$2,200.00	\$2,200.00	\$2,200.00	\$0.00	0.00%
10.1100.642.04.0	Publications	\$0.00	\$180.13	\$0.00	\$0.00	\$0.00	\$0.00	#DIV/0!
10.1100.648.00.0	Access Fees	\$1,507.00	\$0.00	\$0.00	\$0.00	\$0.00	\$0.00	#DIV/0!
10.1100.650.03.0	Instruction Specific Software/Subs	\$999.00	\$0.00	\$0.00	\$0.00	\$0.00	\$0.00	#DIV/0!
10.1100.733.03.0	Additional Equipment	\$0.00	\$0.00	\$2,383.40	\$500.00	\$500.00	-\$1,883.40	-79.02%
10.1100.734.04.0	Instruction Specific New Hardware	\$9,744.40	\$0.00	\$0.00	\$0.00	\$0.00	\$0.00	#DIV/0!
10.1100.737.03.0	Repl Equipment	\$531.74	\$95.99	\$600.00	\$0.00	\$0.00	-\$600.00	-100.00%
10.1100.737.04.0	Replacement Equipment	\$802.47	\$69.89	\$1,200.00	\$1,000.00	\$1,000.00	-\$200.00	-16.67%
10.1100.810.04.0	Academic Dues/Fees	\$400.00	\$0.00	\$400.00	\$0.00	\$0.00	-\$400.00	-100.00%
10.1102.112.03.0	Salaries, Art	\$52,969.00	\$55,511.00	\$57,999.00	\$60,518.00	\$60,518.00	\$2,519.00	4.34%
10.1102.112.04.0	Salaries, Art	\$119,222.00	\$124,781.00	\$129,592.00	\$133,952.00	\$133,952.00	\$4,360.00	3.36%
10.1102.430.04.0	Repair Equipment, Art	\$0.00	\$0.00	\$250.00	\$250.00	\$250.00	\$0.00	0.00%
10.1102.614.03.0	Expendable Supplies, Art	\$2,776.55	\$3,290.23	\$3,142.68	\$3,500.00	\$3,500.00	\$357.32	11.37%
10.1102.614.04.0	Expendable Supplies, Art	\$11,032.77	\$7,614.82	\$12,800.00	\$11,500.00	\$11,500.00	-\$1,300.00	-10.16%
10.1102.615.03.0	Teaching Mat, Art	\$47.19	\$0.00	\$0.00	\$0.00	\$0.00	\$0.00	#DIV/0!
10.1102.733.03.0	Addl Equipment, Art	\$66.70	\$0.00	\$867.97	\$458.49	\$458.49	-\$409.48	-47.18%
10.1102.737.04.0	Replacement Equip, Art	\$2,725.33	\$0.00	\$2,200.00	\$2,200.00	\$2,200.00	\$0.00	0.00%
10.1105.112.03.0	Salaries, Language Arts	\$239,178.90	\$249,730.72	\$263,150.00	\$274,871.00	\$274,871.00	\$11,721.00	4.45%
10.1105.112.04.0	Salaries, Lang Arts	\$646,942.57	\$681,951.09	\$693,468.00	\$726,065.00	\$726,065.00	\$32,597.00	4.70%
10.1105.550.04.0	Printing	\$325.00	\$0.00	\$500.00	\$500.00	\$500.00	\$0.00	0.00%
10.1105.612.04.0	Workbooks	\$6,728.48	\$9,205.79	\$13,744.00	\$7,000.00	\$7,000.00	-\$6,744.00	-49.07%

Account	Description	FY18 Actual	FY19 Actual	FY20 Budget	FY21 Round 3.5	FY21 Round 4.0	\$ Diff	% Diff
10.1105.614.03.0	Expendables	\$0.00	\$131.29	\$0.00	\$0.00	\$0.00	\$0.00	#DIV/0!
10.1105.615.03.0	Teaching Mat, Lang Arts	-\$19.91	\$0.00	\$0.00	\$0.00	\$0.00	\$0.00	#DIV/0!
10.1105.615.04.0	Teaching Mat, Lang Arts	\$947.86	\$343.32	\$390.00	\$500.00	\$500.00	\$110.00	28.21%
10.1105.641.03.0	Textbooks, Language Arts	\$5,757.41	\$2,774.75	\$2,539.50	\$6,230.71	\$6,230.71	\$3,691.21	145.35%
10.1105.641.04.0	Textbooks, Lang Arts	\$6,549.37	\$5,351.36	\$7,500.00	\$5,000.00	\$5,000.00	-\$2,500.00	-33.33%
10.1105.643.04.0	Online Resources	\$0.00	\$360.00	\$0.00	\$0.00	\$0.00	\$0.00	#DIV/0!
10.1105.644.04.0	Periodicals	\$550.00	\$498.89	\$450.00	\$350.00	\$350.00	-\$100.00	-22.22%
10.1105.733.03.0	Addl Equip, Lang Arts	\$0.00	\$0.00	\$0.00	\$495.99	\$495.99	\$495.99	#DIV/0!
10.1105.810.04.0	Dues	\$65.00	\$0.00	\$100.00	\$0.00	\$0.00	-\$100.00	-100.00%
10.1106.112.03.0	Salaries, Foreign Lang	\$179,914.00	\$187,179.80	\$176,328.00	\$182,288.00	\$182,288.00	\$5,960.00	3.38%
10.1106.112.04.0	Salaries, Foreign Lang	\$352,928.00	\$388,955.90	\$385,282.00	\$412,722.00	\$412,722.00	\$27,440.00	7.12%
10.1106.320.04.0	Guest Speakers, World Language	\$146.95	\$100.00	\$200.00	\$400.00	\$400.00	\$200.00	100.00%
10.1106.612.04.0	Workbooks, Foreign Lang	\$10,325.71	\$4,963.15	\$7,936.05	\$0.00	\$0.00	-\$7,936.05	-100.00%
10.1106.614.03.0	Expend. Supplies Fr Lang	\$199.84	\$130.10	\$455.34	\$478.37	\$478.37	\$23.03	5.06%
10.1106.614.04.0	Expend. Supplies, Foreign Lang	\$945.95	\$551.31	\$500.00	\$700.00	\$700.00	\$200.00	40.00%
10.1106.615.03.0	Teaching Mat, Foreign Lang	\$66.86	\$170.00	\$477.54	\$594.28	\$594.28	\$116.74	24.45%
10.1106.615.04.0	Teaching Mat, Foreign Lang	\$569.25	\$534.73	\$600.00	\$800.00	\$800.00	\$200.00	33.33%
10.1106.616.04.0	Awards	\$167.48	\$240.26	\$300.00	\$350.00	\$350.00	\$50.00	16.67%
10.1106.641.03.0	Textbooks, Foreign Lang	\$7,205.10	\$0.00	\$0.00	\$0.00	\$0.00	\$0.00	#DIV/0!
10.1106.641.04.0	Textbooks, Foreign Lang	\$2,884.60	\$10,293.48	\$8,783.50	\$4,894.50	\$4,894.50	-\$3,889.00	-44.28%
10.1106.643.04.0	Online Resources	\$0.00	\$35.00	\$0.00	\$870.00	\$870.00	\$870.00	#DIV/0!
10.1106.733.03.0	Addl Equip, Foreign Lang	\$0.00	\$0.00	\$0.00	\$174.00	\$174.00	\$174.00	#DIV/0!
10.1106.733.04.0	Addl Equip, Foreign Lang	\$173.90	\$370.90	\$474.00	\$660.00	\$660.00	\$186.00	39.24%
10.1106.737.03.0	Repl Equipment, Foreign Lang	\$0.00	\$20.00	\$31.99	\$0.00	\$0.00	-\$31.99	-100.00%
10.1106.810.04.0	Dues, Foreign Lang	\$85.00	\$60.00	\$180.00	\$0.00	\$0.00	-\$180.00	-100.00%
10.1107.112.03.0	Salaries, Health	\$64,497.00	\$67,339.00	\$70,086.00	\$71,487.00	\$71,487.00	\$1,401.00	2.00%
10.1107.112.04.0	Salaries, Health	\$57,874.00	\$60,645.00	\$62,799.00	\$64,055.00	\$64,055.00	\$1,256.00	2.00%
10.1107.614.03.0	Expendable Supplies-Health	\$852.00	\$926.70	\$567.21	\$580.10	\$580.10	\$12.89	2.27%
10.1107.615.03.0	Teaching Mat, Health	\$0.00	\$0.00	\$729.50	\$455.39	\$455.39	-\$274.11	-37.58%
10.1107.615.04.0	Teaching Mat, Health	\$1,701.73	\$676.58	\$900.00	\$1,000.00	\$1,000.00	\$100.00	11.11%
10.1107.641.04.0	Books and Other Print Media	\$1,237.39	\$1,121.00	\$2,000.00	\$1,300.00	\$1,300.00	-\$700.00	-35.00%
10.1108.112.03.0	Salaries, Phys Ed	\$121,477.00	\$96,877.00	\$102,771.00	\$110,573.00	\$110,573.00	\$7,802.00	7.59%
10.1108.112.04.0	Salaries, Phys Ed	\$121,937.00	\$125,885.00	\$86,920.40	\$91,690.50	\$91,690.50	\$4,770.10	5.49%
10.1108.430.03.0	Repairs and Maintenance	\$1,067.68	\$398.10	\$1,125.00	\$700.00	\$700.00	-\$425.00	-37.78%
10.1108.430.04.0	Repairs And Maint Services	\$587.96	\$0.00	\$600.00	\$700.00	\$700.00	\$100.00	16.67%
10.1108.614.03.0	Expendable Supplies, Phys Ed	\$294.04	\$407.85	\$195.30	\$1,106.30	\$1,106.30	\$911.00	466.46%

Account	Description	FY18 Actual	FY19 Actual	FY20 Budget	FY21 Round 3.5	FY21 Round 4.0	\$ Diff	% Diff
10.1108.615.03.0	Teaching Mat, Phys Ed	\$3,775.01	\$1,160.00	\$0.00	\$0.00	\$0.00	\$0.00	#DIV/0!
10.1108.615.04.0	Teaching Mat, Phys Ed	\$2,195.23	\$0.00	\$2,800.00	\$2,800.00	\$2,800.00	\$0.00	0.00%
10.1108.733.03.0	Addl Equipment, Phys Ed	\$0.00	\$320.98	\$0.00	\$0.00	\$0.00	\$0.00	#DIV/0!
10.1108.733.04.0	Addl Equip, Phys Ed	\$0.00	\$0.00	\$0.00	\$500.00	\$500.00	\$500.00	#DIV/0!
10.1108.737.03.0	Replacement Equipment	\$0.00	\$104.20	\$500.00	\$920.00	\$920.00	\$420.00	84.00%
10.1108.737.04.0	Replacement Equip.	\$699.12	\$0.00	\$900.00	\$900.00	\$900.00	\$0.00	0.00%
10.1109.112.04.0	Salaries, Home Ec	\$57,874.00	\$60,645.00	\$62,799.00	\$64,055.00	\$64,055.00	\$1,256.00	2.00%
10.1109.320.04.0	Guest Speakers	\$100.00	\$50.00	\$200.00	\$200.00	\$200.00	\$0.00	0.00%
10.1109.430.04.0	Repair Equip, Home Ec	\$0.00	\$0.00	\$794.00	\$794.00	\$794.00	\$0.00	0.00%
10.1109.614.04.0	Expendable Supplies, Home Ec	\$11,247.63	\$9,487.82	\$11,000.00	\$11,000.00	\$11,000.00	\$0.00	0.00%
10.1109.615.04.0	Teaching Mat, Home Ec	\$1,061.48	\$878.90	\$1,035.00	\$0.00	\$0.00	-\$1,035.00	-100.00%
10.1109.616.04.0	Awards	\$0.00	\$0.00	\$80.00	\$80.00	\$80.00	\$0.00	0.00%
10.1109.641.04.0	Textbooks, Home Ec	\$622.90	\$0.00	\$690.00	\$0.00	\$0.00	-\$690.00	-100.00%
10.1109.737.04.0	Replacement Equipment	\$362.56	\$1,074.00	\$690.00	\$1,000.00	\$1,000.00	\$310.00	44.93%
10.1109.810.04.0	Dues, Home Ec	\$0.00	\$150.00	\$0.00	\$0.00	\$0.00	\$0.00	#DIV/0!
10.1110.112.03.0	Salaries, Tech Ed	\$71,684.00	\$73,118.00	\$53,557.00	\$60,272.00	\$60,272.00	\$6,715.00	12.54%
10.1110.430.03.0	Repairs and Maintenance, Tech Ed	\$0.00	\$507.25	\$450.00	\$600.00	\$600.00	\$150.00	33.33%
10.1110.614.03.0	Expendable Supplies, Tech Ed	\$3,024.05	\$2,992.12	\$2,151.35	\$4,016.83	\$4,016.83	\$1,865.48	86.71%
10.1110.615.03.0	Teaching Mat, Tech Ed	\$0.00	\$0.00	\$0.00	\$2,350.00	\$2,350.00	\$2,350.00	#DIV/0!
10.1110.733.03.0	Additional Equip, Tech Ed	\$0.00	\$0.00	\$0.00	\$3,395.92	\$3,395.92	\$3,395.92	#DIV/0!
10.1110.737.03.0	Repl Equipment, Tech Ed	\$0.00	\$0.00	\$0.00	\$999.99	\$999.99	\$999.99	#DIV/0!
10.1111.112.00.0	Salaries, HS-MS Math	\$0.00	\$51,970.38	\$53,570.00	\$59,833.00	\$59,833.00	\$6,263.00	11.69%
10.1111.112.03.0	Salaries, Math	\$249,537.60	\$259,725.16	\$271,842.00	\$297,260.00	\$297,260.00	\$25,418.00	9.35%
10.1111.112.04.0	Salaries, Math	\$606,058.27	\$660,157.95	\$683,191.00	\$691,389.53	\$691,389.53	\$8,198.53	1.20%
10.1111.614.03.0	Expendable Supplies, Math	\$403.51	\$921.99	\$1,433.00	\$1,864.45	\$1,864.45	\$431.45	30.11%
10.1111.614.04.0	Expendable Supplies, Math	\$325.21	\$1,252.35	\$1,000.00	\$1,160.00	\$1,160.00	\$160.00	16.00%
10.1111.615.03.0	Teaching Mat, Math	\$627.76	\$36.35	\$2,983.50	\$483.50	\$483.50	-\$2,500.00	-83.79%
10.1111.615.04.0	Teaching Mat, Math	\$5,838.34	\$8,002.27	\$0.00	\$400.00	\$400.00	\$400.00	#DIV/0!
10.1111.641.03.0	Textbooks, Math	\$1,710.78	\$0.00	\$4,920.00	\$3,306.25	\$3,306.25	-\$1,613.75	-32.80%
10.1111.641.04.0	Textbooks, Math	\$20,126.59	\$12,446.09	\$20,376.00	\$0.00	\$0.00	-\$20,376.00	-100.00%
10.1111.643.03.0	Online Resources-Math	\$599.74	\$320.00	\$1,180.00	\$1,400.00	\$1,400.00	\$220.00	18.64%
10.1111.643.04.0	Online Resources	\$1,378.85	\$1,375.17	\$399.50	\$900.00	\$900.00	\$500.50	125.28%
10.1111.810.03.0	Dues and Fees	\$774.00	\$435.00	\$1,199.50	\$435.00	\$435.00	-\$764.50	-63.73%
10.1111.810.04.0	Dues, Math	\$106.00	\$106.00	\$200.00	\$200.00	\$200.00	\$0.00	0.00%
10.1112.112.03.0	Salaries, Music	\$118,919.00	\$126,831.00	\$131,174.00	\$136,344.00	\$136,344.00	\$5,170.00	3.94%

Account	Description	FY18 Actual	FY19 Actual	FY20 Budget	FY21 Round 3.5	FY21 Round 4.0	\$ Diff	% Diff
10.1112.112.04.0	Salaries, Music	\$112,207.25	\$117,217.31	\$122,456.99	\$126,781.00	\$126,781.00	\$4,324.01	3.53%
10.1112.113.04.0	Salaries - Theater	\$17,547.75	\$18,345.69	\$19,205.01	\$20,513.00	\$20,513.00	\$1,307.99	6.81%
10.1112.115.04.0	Salaries-Piano Accompanist	\$430.50	\$0.00	\$0.00	\$0.00	\$0.00	\$0.00	#DIV/0!
10.1112.430.03.0	Repairs and Maintenance	\$0.00	\$480.00	\$740.00	\$740.00	\$740.00	\$0.00	0.00%
10.1112.430.04.0	Repair Equip, Music	\$706.25	\$1,398.79	\$1,100.00	\$800.00	\$800.00	-\$300.00	-27.27%
10.1112.540.03.0	Transportation-Music	\$0.00	\$0.00	\$575.00	\$600.00	\$600.00	\$25.00	4.35%
10.1112.540.04.0	Transportation Music	\$1,576.00	\$1,926.85	\$3,000.00	\$3,000.00	\$3,000.00	\$0.00	0.00%
10.1112.580.04.0	Travel, Choral Director	\$0.00	\$0.00	\$600.00	\$600.00	\$600.00	\$0.00	0.00%
10.1112.612.04.0	Workbooks, Music	\$191.80	\$244.57	\$200.00	\$300.00	\$300.00	\$100.00	50.00%
10.1112.614.03.0	Expendable Supplies, Music	\$488.25	\$113.03	\$500.00	\$690.00	\$690.00	\$190.00	38.00%
10.1112.614.04.0	Expendable Supplies, Music	\$1,000.49	\$931.91	\$1,100.00	\$1,250.00	\$1,250.00	\$150.00	13.64%
10.1112.615.03.0	Teaching Mat, Music	\$1,439.90	\$1,059.55	\$1,176.00	\$1,176.00	\$1,176.00	\$0.00	0.00%
10.1112.615.04.0	Teaching Mat, Music	\$1,352.20	\$1,255.14	\$1,575.00	\$1,575.00	\$1,575.00	\$0.00	0.00%
10.1112.616.04.0	Teaching Mats. Choral	\$1,527.47	\$1,532.02	\$1,600.00	\$1,600.00	\$1,600.00	\$0.00	0.00%
10.1112.617.04.0	Teaching Mat, Dance	\$0.00	\$0.00	\$350.00	\$350.00	\$350.00	\$0.00	0.00%
10.1112.733.03.0	Additional Equip	\$393.83	\$0.00	\$0.00	\$0.00	\$0.00	\$0.00	#DIV/0!
10.1112.733.04.0	Addl Equip, Music	\$986.54	\$0.00	\$0.00	\$0.00	\$0.00	\$0.00	#DIV/0!
10.1112.737.03.0	Replacement Equipment	\$0.00	\$2,150.00	\$0.00	\$345.02	\$345.02	\$345.02	#DIV/0!
10.1112.737.04.0	Replace Equip, Music	\$0.00	\$2,400.00	\$1,000.00	\$1,000.00	\$1,000.00	\$0.00	0.00%
10.1112.810.03.0	Dues and Fees	\$362.00	\$766.00	\$1,355.00	\$780.00	\$780.00	-\$575.00	-42.44%
10.1112.810.04.0	Dues, Music	\$326.00	\$828.00	\$1,280.00	\$1,280.00	\$1,280.00	\$0.00	0.00%
10.1113.112.03.0	Salaries, Science	\$212,996.08	\$217,325.00	\$231,057.00	\$243,412.00	\$243,412.00	\$12,355.00	5.35%
10.1113.112.04.0	Salaries, Science	\$518,425.82	\$507,946.90	\$595,652.00	\$601,850.00	\$601,850.00	\$6,198.00	1.04%
10.1113.430.03.0	Repairs & Maintenance, Science, G	\$2,882.15	\$1,500.00	\$1,500.00	\$1,500.00	\$1,500.00	\$0.00	0.00%
10.1113.430.04.0	Repair, Science	\$1,100.00	\$900.00	\$1,100.00	\$1,100.00	\$1,100.00	\$0.00	0.00%
10.1113.612.04.0	Workbooks	\$583.94	\$1,461.64	\$1,850.00	\$2,100.00	\$2,100.00	\$250.00	13.51%
10.1113.613.03.0	Expendable Supplies, Science, Gra	\$600.00	\$600.00	\$600.00	\$600.00	\$600.00	\$0.00	0.00%
10.1113.614.03.0	Expendable Supplies, Science, Gra	\$1,756.22	\$994.78	\$2,670.00	\$2,771.58	\$2,771.58	\$101.58	3.80%
10.1113.614.04.0	Expendable Supplies, Science	\$3,795.28	\$1,831.71	\$3,800.00	\$4,100.00	\$4,100.00	\$300.00	7.89%
10.1113.615.03.0	Teaching Mat, Science, Grade 7	\$8,271.20	\$9,382.92	\$8,560.24	\$8,995.42	\$8,995.42	\$435.18	5.08%
10.1113.615.04.0	Teaching Mat, Science	\$7,803.85	\$6,714.99	\$5,800.00	\$5,800.00	\$5,800.00	\$0.00	0.00%
10.1113.616.03.0	Teaching Materials, Science, Grade	\$4,500.00	\$5,000.00	\$4,500.00	\$5,280.31	\$5,280.31	\$780.31	17.34%
10.1113.641.04.0	Textbooks, Science	\$38,139.56	\$3,220.92	\$3,432.00	\$0.00	\$0.00	-\$3,432.00	-100.00%
10.1113.649.03.0	Publications	\$79.00	\$0.00	\$0.00	\$0.00	\$0.00	\$0.00	#DIV/0!
10.1113.733.03.0	Additional Equipment Sci	\$0.00	\$8,538.24	\$1,521.00	\$0.00	\$0.00	-\$1,521.00	-100.00%

Account	Description	FY18 Actual	FY19 Actual	FY20 Budget	FY21 Round 3.5	FY21 Round 4.0	\$ Diff	% Diff
10.1113.733.04.0	Addl Equip, Science	\$898.65	\$1,095.29	\$1,075.00	\$1,075.00	\$1,075.00	\$0.00	0.00%
10.1113.737.03.0	Science Repl. Equipment	\$534.02	\$0.00	\$0.00	\$0.00	\$0.00	\$0.00	#DIV/0!
10.1113.737.04.0	Replacement Equipment	\$0.00	\$2,461.49	\$2,300.00	\$2,300.00	\$2,300.00	\$0.00	0.00%
10.1113.810.03.0	Dues, Science, Grade 7	\$0.00	\$157.00	\$200.00	\$0.00	\$0.00	-\$200.00	-100.00%
10.1114.112.04.0	Salaries, Computer Ed.	\$120,483.44	\$64,760.00	\$67,174.00	\$71,122.00	\$71,122.00	\$3,948.00	5.88%
10.1114.614.04.0	Expendables, Computer Ed.	\$0.00	\$1,136.15	\$605.00	\$1,100.00	\$1,100.00	\$495.00	81.82%
10.1114.615.04.0	Teaching Mat, Computer Ed.	\$0.00	\$639.23	\$0.00	\$500.00	\$500.00	\$500.00	#DIV/0!
10.1114.641.04.0	Textbooks, Computer Ed.	\$700.00	\$1,010.22	\$1,620.00	\$810.00	\$810.00	-\$810.00	-50.00%
10.1114.643.04.0	Online Resources, Computer Ed	\$0.00	\$0.00	\$0.00	\$0.00	\$0.00	\$0.00	#DIV/0!
10.1114.733.04.0	Furniture/Fixtures-Comptuter Ed	\$0.00	\$0.00	\$1,100.00	\$2,550.00	\$2,550.00	\$1,450.00	131.82%
10.1115.112.03.0	Salaries, Soc Studies	\$266,179.00	\$280,445.12	\$284,584.00	\$294,094.00	\$294,094.00	\$9,510.00	3.34%
10.1115.112.04.0	Salaries, Soc Studies	\$563,288.84	\$584,667.88	\$622,843.00	\$635,113.00	\$635,113.00	\$12,270.00	1.97%
10.1115.320.03.0	Guest Speakers	\$0.00	\$400.00	\$750.00	\$1,000.00	\$1,000.00	\$250.00	33.33%
10.1115.612.04.0	Workbooks, Soc Studies	\$604.80	\$0.00	\$300.00	\$300.00	\$300.00	\$0.00	0.00%
10.1115.614.03.0	Expendable Supplies	\$166.33	\$284.94	\$1,070.00	\$275.85	\$275.85	-\$794.15	-74.22%
10.1115.614.04.0	Expend Supply Social Studies	\$0.00	\$228.49	\$300.00	\$300.00	\$300.00	\$0.00	0.00%
10.1115.615.03.0	Teaching Mat, Soc Studies	\$1,022.43	\$489.31	\$1,463.50	\$535.59	\$535.59	-\$927.91	-63.40%
10.1115.615.04.0	Teaching Mat, Social Studies	\$1,894.84	\$0.00	\$4,264.00	\$2,000.00	\$2,000.00	-\$2,264.00	-53.10%
10.1115.641.03.0	Textbooks, Soc Studies	\$260.22	\$0.00	\$0.00	\$0.00	\$0.00	\$0.00	#DIV/0!
10.1115.641.04.0	Textbooks, Social Studies	\$20,760.22	\$15,325.64	\$1,814.00	\$2,000.00	\$2,000.00	\$186.00	10.25%
10.1115.643.03.0	Online Resources	\$949.00	\$0.00	\$864.00	\$876.00	\$876.00	\$12.00	1.39%
10.1115.643.04.0	Online Resources	\$6,822.10	\$0.00	\$3,600.00	\$1,000.00	\$1,000.00	-\$2,600.00	-72.22%
10.1115.810.03.0	Dues and Fees	\$236.00	\$90.00	\$400.00	\$786.00	\$786.00	\$386.00	96.50%
10.1116.112.04.0	Salaries, Tech Ed	\$50,278.46	\$44,984.00	\$47,953.00	\$53,601.00	\$53,601.00	\$5,648.00	11.78%
10.1116.430.04.0	Repair Equip, Tech Ed	\$0.00	\$68.65	\$100.00	\$100.00	\$100.00	\$0.00	0.00%
10.1116.614.04.0	Expendable Supplies, Tech Ed	\$509.66	\$483.35	\$1,150.00	\$1,150.00	\$1,150.00	\$0.00	0.00%
10.1116.643.04.0	Online Resources	\$0.00	\$0.00	\$3,000.00	\$0.00	\$0.00	-\$3,000.00	-100.00%
10.1116.733.04.0	Addl Equipment, Tech Ed	\$4,669.63	\$3,191.12	\$3,000.00	\$3,000.00	\$3,000.00	\$0.00	0.00%
10.1116.810.00.0	First Robotics Team Registration	\$0.00	\$9,000.00	\$5,000.00	\$5,000.00	\$5,000.00	\$0.00	0.00%
10.1116.811.04.0	PLTW Participation Fee	\$2,500.00	\$2,500.00	\$3,000.00	\$3,000.00	\$3,000.00	\$0.00	0.00%
10.1123.112.03.0	Salaries, Reading	\$139,768.00	\$146,029.00	\$152,128.00	\$156,779.00	\$156,779.00	\$4,651.00	3.06%
10.1123.641.03.0	Textbooks, Reading	\$209.50	\$385.95	\$473.17	\$479.78	\$479.78	\$6.61	1.40%
10.1123.643.03.0	Online Resources-Reading	\$34.99	\$0.00	\$0.00	\$0.00	\$0.00	\$0.00	#DIV/0!
10.1123.733.03.0	Additional Equipment Reading	\$89.85	\$0.00	\$920.00	\$0.00	\$0.00	-\$920.00	-100.00%
10.1123.810.03.0	Dues and Fees-Spelling Bee	\$158.50	\$167.50	\$180.00	\$180.00	\$180.00	\$0.00	0.00%

Account	Description	FY18 Actual	FY19 Actual	FY20 Budget	FY21 Round 3.5	FY21 Round 4.0	\$ Diff	% Diff
10.1169.112.03.0	Salaries, Computer	\$78,402.00	\$79,970.00	\$83,465.00	\$85,134.00	\$85,134.00	\$1,669.00	2.00%
10.1169.615.03.0	Teaching Mat, Computer	\$2,497.70	\$4,153.65	\$3,495.00	\$4,495.00	\$4,495.00	\$1,000.00	28.61%
		<b>\$5,523,327.25</b>	<b>\$5,667,626.39</b>	<b>\$5,938,848.00</b>	<b>\$6,188,127.75</b>	<b>\$6,188,127.75</b>	<b>\$249,279.75</b>	<b>4.20%</b>

10.1200.110.00.0	Negt. Support Staff Increases	\$0.00	\$0.00	\$30,322.96	\$0.00	\$0.00	-\$30,322.96	-100.00%
10.1200.110.04.0	New Positions, SPED	\$0.00	\$0.00	\$46,013.00	\$0.00	\$0.00	-\$46,013.00	-100.00%
10.1200.111.03.0	Wages: Personal Care	\$0.00	\$0.00	\$0.00	\$25,700.00	\$25,700.00	\$25,700.00	#DIV/0!
10.1200.111.04.0	Wages: Personal Care	\$0.00	\$0.00	\$0.00	\$75,000.00	\$75,000.00	\$75,000.00	#DIV/0!
10.1200.112.00.0	Salaries, Special Ed Math	\$0.00	\$81,828.00	\$83,465.00	\$85,134.00	\$85,134.00	\$1,669.00	2.00%
10.1200.112.03.0	Salaries, Res Rm/spec Needs	\$286,885.55	\$286,502.72	\$280,409.00	\$328,059.00	\$328,059.00	\$47,650.00	16.99%
10.1200.112.04.0	Salaries, Res Rm/Spec Needs	\$475,072.12	\$470,779.50	\$447,624.00	\$461,073.80	\$431,908.80	-\$15,715.20	-3.51%
10.1200.114.03.0	Salaries, Special Ed Paras	\$187,388.67	\$183,102.35	\$217,945.76	\$218,243.00	\$218,243.00	\$297.24	0.14%
10.1200.114.04.0	Salaries, Special Ed Paras	\$389,054.49	\$493,689.36	\$570,169.07	\$514,449.26	\$514,449.26	-\$55,719.81	-9.77%
10.1200.115.00.0	Stipends	\$0.00	\$0.00	\$8,300.00	\$5,800.00	\$5,800.00	-\$2,500.00	-30.12%
10.1200.115.03	Secretaries, Student Services	\$0.00	\$0.00	\$0.00	\$14,646.50	\$14,646.50	\$14,646.50	#DIV/0!
10.1200.115.04	Secretaries, Student Services	\$0.00	\$0.00	\$0.00	\$27,220.48	\$27,220.48	\$27,220.48	#DIV/0!
10.1200.116.03.0	Contracted Individual Service Aide	\$0.00	\$0.00	\$79,184.00	\$0.00	\$0.00	-\$79,184.00	-100.00%
10.1200.117.03.0	Behavior Management	\$0.00	\$0.00	\$5,000.00	\$2,000.00	\$2,000.00	-\$3,000.00	-60.00%
10.1200.117.04.0	Behavior Management	\$0.00	\$0.00	\$6,200.00	\$3,200.00	\$3,200.00	-\$3,000.00	-48.39%
10.1200.118.00.0	Staff Professional Services/Training	\$7,380.00	\$5,000.00	\$0.00	\$0.00	\$0.00	\$0.00	#DIV/0!
10.1200.121.03.0	Special Ed Coordinator	\$29,110.06	\$29,953.81	\$30,852.62	\$39,799.72	\$39,799.72	\$8,947.10	29.00%
10.1200.121.04.0	Special Ed Coordinator	\$76,906.23	\$90,220.00	\$92,926.60	\$95,900.21	\$95,900.21	\$2,973.61	3.20%
10.1200.122.03.0	Wages: Extra Curricular: Professio	\$0.00	\$0.00	\$0.00	\$7,500.00	\$7,500.00	\$7,500.00	#DIV/0!
10.1200.122.04.0	Wages: Extra Curricular: Professio	\$0.00	\$0.00	\$0.00	\$18,900.00	\$18,900.00	\$18,900.00	#DIV/0!
10.1200.124.00.0	Wages: Training (All) - Student Ser	\$0.00	\$120.16	\$0.00	\$17,300.00	\$17,300.00	\$17,300.00	#DIV/0!
10.1200.125.03.0	Wages: Meetings (All) - Student Se	\$110.00	\$776.45	\$800.00	\$2,500.00	\$2,500.00	\$1,700.00	212.50%
10.1200.125.04.0	Wages: Meetings (All) - Student Se	\$0.00	\$1,925.23	\$800.00	\$6,500.00	\$6,500.00	\$5,700.00	712.50%
10.1200.127.03.0	Tutoring-by Staff-IEP	\$4,368.75	\$0.00	\$0.00	\$0.00	\$0.00	\$0.00	#DIV/0!
10.1200.127.04.0	Tutoring-by Staff-IEP	\$0.00	\$0.00	\$16,050.00	\$0.00	\$0.00	-\$16,050.00	-100.00%
10.1200.242.00.0	Spec Ed Professtional Developeme	\$0.00	\$836.81	\$12,525.00	\$1,500.00	\$1,500.00	-\$11,025.00	-88.02%
10.1200.320.03.0	Life Skills	\$0.00	\$4,032.31	\$4,983.00	\$0.00	\$0.00	-\$4,983.00	-100.00%
10.1200.320.04.0	Life Skills	\$0.00	\$406.60	\$10,590.00	\$0.00	\$0.00	-\$10,590.00	-100.00%
10.1200.330.00.0	Legal Services, Sped	\$17,198.84	\$6,885.00	\$9,000.00	\$9,000.00	\$9,000.00	\$0.00	0.00%
10.1200.330.03.0	Contracted Service	\$63,298.71	\$78,490.08	\$77,800.00	\$22,000.00	\$22,000.00	-\$55,800.00	-71.72%
10.1200.330.04.0	Contracted Services	\$99,370.26	\$49,853.19	\$46,566.99	\$153,949.82	\$153,949.82	\$107,382.83	230.60%

Account	Description	FY18 Actual	FY19 Actual	FY20 Budget	FY21 Round 3.5	FY21 Round 4.0	\$ Diff	% Diff
10.1200.331.03.0	OOD Related Services	\$0.00	\$14,441.61	\$30,500.00	\$5,000.00	\$5,000.00	-\$25,500.00	-83.61%
10.1200.331.04.0	OOD Related Services	\$378,580.38	\$206,483.43	\$302,752.00	\$269,569.35	\$269,569.35	-\$33,182.65	-10.96%
10.1200.350.00.0	Inservice Program	\$0.00	\$0.00	\$200.00	\$200.00	\$200.00	\$0.00	0.00%
10.1200.430.04.0	Equip Repair, Special Needs	\$0.00	\$57.95	\$0.00	\$0.00	\$0.00	\$0.00	#DIV/0!
10.1200.560.03.0	Tuition	\$111,309.42	\$127,683.87	\$254,291.64	\$91,750.00	\$91,750.00	-\$162,541.64	-63.92%
10.1200.560.04.0	Tuition	\$1,053,765.80	\$999,506.33	\$820,560.34	\$655,900.09	\$655,900.09	-\$164,660.25	-20.07%
10.1200.580.00.0	Travel	\$245.00	\$0.00	\$600.00	\$2,350.00	\$2,350.00	\$1,750.00	291.67%
10.1200.580.03.0	Travel	\$124.40	\$160.50	\$350.00	\$300.00	\$300.00	-\$50.00	-14.29%
10.1200.580.04.0	Travel	\$330.90	\$329.54	\$400.00	\$300.00	\$300.00	-\$100.00	-25.00%
10.1200.610.04.0	Teaching Materials-Reading Special	\$2,431.98	\$516.13	\$2,000.00	\$633.00	\$633.00	-\$1,367.00	-68.35%
10.1200.612.03.0	Workbooks, Special Needs	\$0.00	\$0.00	\$0.00	\$1,400.00	\$1,400.00	\$1,400.00	#DIV/0!
10.1200.612.04.0	Workbooks, Special Needs	\$81.01	\$0.00	\$2,250.00	\$750.00	\$750.00	-\$1,500.00	-66.67%
10.1200.613.03.0	Life Skills Prg Supplies	\$2,411.86	\$15.67	\$0.00	\$800.00	\$800.00	\$800.00	#DIV/0!
10.1200.613.04.0	Life Skills Prg Supplies	\$8,366.36	\$5,350.68	\$10,440.00	\$10,075.00	\$10,075.00	-\$365.00	-3.50%
10.1200.614.03.0	Expendable Supplies, S/n	\$4,031.68	\$592.71	\$1,300.00	\$875.00	\$875.00	-\$425.00	-32.69%
10.1200.614.04.0	Expendable Supplies, S/n	\$3,013.40	\$2,245.92	\$3,100.00	\$800.00	\$800.00	-\$2,300.00	-74.19%
10.1200.615.03.0	Teaching Materials, Special Needs	\$16,584.86	\$1,228.32	\$4,675.00	\$1,105.00	\$1,105.00	-\$3,570.00	-76.36%
10.1200.615.04.0	Teaching Mat, Special Needs	\$314.50	\$43.38	\$1,435.00	\$0.00	\$0.00	-\$1,435.00	-100.00%
10.1200.616.04.0	Expendables, Res. Rm	\$60.15	\$0.00	\$120.00	\$350.00	\$350.00	\$230.00	191.67%
10.1200.617.04.0	Teaching Mats Res. Rm.	\$2,746.98	\$0.00	\$3,500.00	\$2,220.00	\$2,220.00	-\$1,280.00	-36.57%
10.1200.618.04.0	FIEMUS- teaching materials	\$12.99	\$176.54	\$4,055.00	\$1,170.00	\$1,170.00	-\$2,885.00	-71.15%
10.1200.619.04.0	FIEMUS supplies and field trips	\$941.18	\$1,199.26	\$2,400.00	\$2,250.00	\$2,250.00	-\$150.00	-6.25%
10.1200.641.04.0	Textbooks, Special Needs	\$374.25	\$0.00	\$250.00	\$250.00	\$250.00	\$0.00	0.00%
10.1200.650.03.0	Instruction Specific Software/Subs	\$12,263.21	\$8,873.50	\$9,390.00	\$12,198.20	\$12,198.20	\$2,808.20	29.91%
10.1200.650.04.0	Instruction Specific Software/Subs	\$25,701.91	\$25,243.90	\$20,570.00	\$22,028.20	\$22,028.20	\$1,458.20	7.09%
10.1200.732.03.0	Equipment/Maintenance Plans	\$3,886.00	\$0.00	\$2,675.00	\$0.00	\$0.00	-\$2,675.00	-100.00%
10.1200.732.04.0	Equipment/Maintenance Plans	\$49.95	\$11.99	\$8,075.00	\$0.00	\$0.00	-\$8,075.00	-100.00%
10.1200.733.03.0	New Student Equipment-Assistive	\$6,999.93	\$630.00	\$0.00	\$0.00	\$0.00	\$0.00	#DIV/0!
10.1200.733.04.0	New Student Equipment-Assistive	\$0.00	\$1,366.10	\$0.00	\$0.00	\$0.00	\$0.00	#DIV/0!
10.1200.734.03.0	Instruction Specific New Hardware	\$0.00	\$0.00	\$0.00	\$0.00	\$0.00	\$0.00	#DIV/0!
10.1200.734.04.0	Instruction Specific New Hardware	\$0.00	\$0.00	\$0.00	\$0.00	\$0.00	\$0.00	#DIV/0!
10.1200.737.03.0	Rplcment Student Equipment-Assi	\$0.00	\$0.00	\$600.00	\$500.00	\$500.00	-\$100.00	-16.67%
10.1200.737.04.0	Rplcment Student Equipment-Assi	\$0.00	\$6,908.00	\$800.00	\$1,300.00	\$1,300.00	\$500.00	62.50%
10.1200.810.03.0	Dues and Fees	\$592.50	\$2,570.00	\$1,202.50	\$965.00	\$965.00	-\$237.50	-19.75%
10.1200.810.04.0	Dues	\$762.50	\$805.00	\$1,202.50	\$965.00	\$965.00	-\$237.50	-19.75%

Account	Description	FY18 Actual	FY19 Actual	FY20 Budget	FY21 Round 3.5	FY21 Round 4.0	\$ Diff	% Diff
10.1201.115.00.0	ESY-Joint	\$1,431.25	\$43,848.33	\$0.00	\$0.00	\$0.00	\$0.00	#DIV/0!
10.1201.115.03.0	ESY - Wages	\$8,010.00	\$0.00	\$19,000.00	\$16,000.00	\$16,000.00	-\$3,000.00	-15.79%
10.1201.115.04.0	ESY - Wages	\$23,733.75	\$0.00	\$38,000.00	\$32,000.00	\$32,000.00	-\$6,000.00	-15.79%
10.1201.330.03.0	ESY - Contracted Services	\$450.00	\$924.00	\$8,000.00	\$13,550.00	\$13,550.00	\$5,550.00	69.38%
10.1201.330.04.0	ESY - Contracted Services	\$14,520.08	\$2,057.63	\$11,130.00	\$39,500.00	\$39,500.00	\$28,370.00	254.90%
10.1201.614.03.0	ESY - Supplies	\$0.00	\$1,742.40	\$250.00	\$250.00	\$250.00	\$0.00	0.00%
10.1201.614.04.0	ESY - Supplies	\$0.00	\$0.00	\$250.00	\$250.00	\$250.00	\$0.00	0.00%
10.1205.114.03.0	NECC-Paras	\$0.00	\$53,174.32	\$0.00	\$51,942.00	\$51,942.00	\$51,942.00	#DIV/0!
10.1208.110.00.0	Fiemus Training	\$1,585.00	\$3,915.00	\$4,000.00	\$0.00	\$0.00	-\$4,000.00	-100.00%
10.1225.734.03.0	New Student Equipment-Instructional	\$7,051.00	\$1,737.59	\$3,780.57	\$1,450.00	\$1,450.00	-\$2,330.57	-61.65%
10.1225.734.04.0	New Student Equipment-Instructional	\$13,765.39	\$598.00	\$1,300.00	\$1,000.00	\$1,000.00	-\$300.00	-23.08%
10.1225.738.04.0	Replacement Student Equipment-Instructional	\$0.00	\$299.00	\$0.00	\$750.00	\$750.00	\$750.00	#DIV/0!
10.1250.110.04.0	Salary-Transition Specialist	\$38,500.00	\$39,617.00	\$40,805.51	\$42,112.00	\$42,112.00	\$1,306.49	3.20%
10.1250.111.04.0	504 Coordinator	\$42,409.58	\$0.00	\$0.00	\$0.00	\$0.00	\$0.00	#DIV/0!
10.1250.113.04.0	Meetings/Ex-Curricular, 504	\$0.00	\$1,333.76	\$0.00	\$0.00	\$0.00	\$0.00	#DIV/0!
10.1250.114.04.0	504 Paraeducator	\$21,544.87	\$25,750.34	\$26,225.98	\$28,946.00	\$28,946.00	\$2,720.02	10.37%
10.1250.116.03.0	Wages: 504-Extra Curricular: Prof/	\$0.00	\$0.00	\$0.00	\$2,200.00	\$2,200.00	\$2,200.00	#DIV/0!
10.1250.116.04.0	Wages-Extra Curricular: Prof/Allied	\$7,480.66	\$0.00	\$0.00	\$3,000.00	\$3,000.00	\$3,000.00	#DIV/0!
10.1250.120.03.0	Wages: 504-Programs	\$0.00	\$0.00	\$0.00	\$4,000.00	\$4,000.00	\$4,000.00	#DIV/0!
10.1250.120.04.0	Wages: 504-Programs	\$0.00	\$0.00	\$0.00	\$6,500.00	\$6,500.00	\$6,500.00	#DIV/0!
10.1250.127.00.0	Tutoring, 504	\$1,042.40	\$1,360.00	\$0.00	\$0.00	\$0.00	\$0.00	#DIV/0!
10.1250.331.03.0	Contracted Services - 504	\$0.00	\$0.00	\$8,400.00	\$24,200.00	\$24,200.00	\$15,800.00	188.10%
10.1250.331.04.0	Contracted Services - 504	\$455.00	\$8,502.16	\$61,300.00	\$15,900.00	\$15,900.00	-\$45,400.00	-74.06%
10.1250.614.03.0	Expendable Supplies - 504	\$1,211.04	\$44.36	\$1,500.00	\$1,500.00	\$1,500.00	\$0.00	0.00%
10.1250.614.04.0	Expendable Supplies - 504	\$0.00	\$940.76	\$700.00	\$750.00	\$750.00	\$50.00	7.14%
10.1250.615.04.0	Teaching Materials-504	\$1,198.72	\$0.00	\$0.00	\$0.00	\$0.00	\$0.00	#DIV/0!
10.1260.110.00.0	Salaries, ESL / LEP	\$18,898.40	\$12,348.50	\$12,718.96	\$18,414.00	\$18,414.00	\$5,695.04	44.78%
10.1260.321.00.0	Contract Services, Tutors Lep	\$820.00	\$0.00	\$0.00	\$0.00	\$0.00	\$0.00	#DIV/0!
10.1260.580.00.0	Travel, ESL	\$0.00	\$187.51	\$580.00	\$0.00	\$0.00	-\$580.00	-100.00%
10.1260.615.00.0	Teaching Mat, Lep	\$0.00	\$0.00	\$0.00	\$250.00	\$250.00	\$250.00	#DIV/0!
		<b>\$3,476,233.92</b>	<b>\$3,389,222.56</b>	<b>\$3,805,162.00</b>	<b>\$3,525,843.63</b>	<b>\$3,496,678.63</b>	<b>-\$308,483.37</b>	<b>-8.11%</b>

10.1300.561.04.0	Voc Ed Tuition	\$23,602.77	\$22,980.63	\$40,000.00	\$30,000.00	\$30,000.00	-\$10,000.00	-25.00%
------------------	----------------	-------------	-------------	-------------	-------------	-------------	--------------	---------

10.1400.113.00.0	Salary, Athletic Coordinator	\$0.00	\$64,922.00	\$0.00	\$69,010.00	\$69,010.00	\$69,010.00	#DIV/0!
------------------	------------------------------	--------	-------------	--------	-------------	-------------	-------------	---------

Account	Description	FY18 Actual	FY19 Actual	FY20 Budget	FY21 Round 3.5	FY21 Round 4.0	\$ Diff	% Diff
10.1400.113.04.0	Salaries, Athletic Administration	\$133,014.28	\$90,330.00	\$159,909.87	\$94,901.11	\$94,901.11	-\$65,008.76	-40.65%
10.1400.115.04.0	Salaries Athletic Trainer	\$47,807.00	\$52,205.00	\$53,771.15	\$55,492.00	\$55,492.00	\$1,720.85	3.20%
10.1400.116.04.0	Athletic Wages-Choreography	\$0.00	\$1,500.00	\$1,500.00	\$1,500.00	\$1,500.00	\$0.00	0.00%
10.1400.117.03.0	Athletic Stipends	\$42,782.50	\$45,602.00	\$50,200.00	\$50,200.00	\$50,200.00	\$0.00	0.00%
10.1400.117.04.0	Athletic Stipends	\$160,902.00	\$175,250.00	\$202,250.00	\$202,250.00	\$202,250.00	\$0.00	0.00%
10.1400.118.04.0	Salaries, Officials/Support	\$0.00	\$900.00	\$1,100.00	\$2,925.00	\$2,925.00	\$1,825.00	165.91%
10.1400.242.04.0	Athletic Professional Development	\$3,017.85	\$1,010.85	\$1,000.00	\$1,000.00	\$1,000.00	\$0.00	0.00%
10.1400.320.03.0	Officials	\$7,454.50	\$9,099.50	\$12,281.00	\$12,466.00	\$12,466.00	\$185.00	1.51%
10.1400.320.04.0	Officials	\$41,524.01	\$42,120.99	\$53,462.00	\$53,597.00	\$53,597.00	\$135.00	0.25%
10.1400.424.00.0	Field Maintenance	\$0.00	\$0.00	\$20,440.00	\$23,249.97	\$23,249.97	\$2,809.97	13.75%
10.1400.424.04.0	Field Maintenance	\$17,652.61	\$9,588.31	\$0.00	\$0.00	\$0.00	\$0.00	#DIV/0!
10.1400.430.03.0	Equipment Repair	\$0.00	\$0.00	\$0.00	\$800.00	\$800.00	\$800.00	#DIV/0!
10.1400.430.04.0	Equipment Repair	\$3,000.00	\$2,045.55	\$5,000.00	\$6,300.00	\$6,300.00	\$1,300.00	26.00%
10.1400.441.04.0	Hockey Ice Time	\$5,000.00	\$5,000.00	\$4,950.00	\$4,950.00	\$4,950.00	\$0.00	0.00%
10.1400.449.04.0	Tennis Facility Rental	\$5,145.00	\$8,670.00	\$8,200.00	\$13,560.00	\$13,560.00	\$5,360.00	65.37%
10.1400.510.03.0	Transportation	\$3,280.20	\$9,734.14	\$9,651.40	\$13,982.42	\$13,982.42	\$4,331.02	44.87%
10.1400.510.04.0	Transportation	\$57,076.19	\$78,007.99	\$77,968.60	\$90,179.01	\$90,179.01	\$12,210.41	15.66%
10.1400.531.04.0	Communications	\$1,321.41	\$1,948.55	\$1,100.00	\$1,100.00	\$1,100.00	\$0.00	0.00%
10.1400.580.04.0	Travel	\$2,020.20	\$2,687.22	\$0.00	\$3,100.00	\$3,100.00	\$3,100.00	#DIV/0!
10.1400.610.03.0	Athletic Balls	\$0.00	\$0.00	\$3,038.00	\$0.00	\$0.00	-\$3,038.00	-100.00%
10.1400.614.00.0	Training Supplies	\$2,181.39	\$0.00	\$0.00	\$0.00	\$0.00	\$0.00	#DIV/0!
10.1400.614.04.0	Training Supplies	\$0.00	\$2,000.00	\$0.00	\$0.00	\$0.00	\$0.00	#DIV/0!
10.1400.615.03.0	Athletic Supplies	\$2,961.24	\$1,085.00	\$0.00	\$0.00	\$0.00	\$0.00	#DIV/0!
10.1400.616.03.0	Awards	\$1,702.93	\$2,030.27	\$0.00	\$0.00	\$0.00	\$0.00	#DIV/0!
10.1400.617.04.0	Helmets-Replacement	\$4,541.95	\$4,165.00	\$6,888.00	\$5,940.00	\$5,940.00	-\$948.00	-13.76%
10.1400.618.03.0	Uniforms	\$3,011.00	\$4,898.50	\$1,735.00	\$2,495.00	\$2,495.00	\$760.00	43.80%
10.1400.618.04.0	Uniforms	\$6,636.00	\$9,935.50	\$4,033.00	\$8,627.00	\$8,627.00	\$4,594.00	113.91%
10.1400.619.03.0	LAX Program Start-up	\$0.00	\$10,407.00	\$0.00	\$0.00	\$0.00	\$0.00	#DIV/0!
10.1400.730.03.0	Addl Equipment	\$0.00	\$0.00	\$0.00	\$530.00	\$530.00	\$530.00	#DIV/0!
10.1400.730.04.0	Addl Equipment	\$5,060.30	\$1,300.88	\$2,622.00	\$0.00	\$0.00	-\$2,622.00	-100.00%
10.1400.739.00.0	Weight Room Management	\$9,946.45	\$10,097.85	\$9,293.98	\$11,663.40	\$11,663.40	\$2,369.42	25.49%
10.1400.739.03.0	Replacement Equipment	\$705.40	\$676.00	\$528.00	\$665.00	\$665.00	\$137.00	25.95%
10.1400.739.04.0	Replacement Equipment	\$6,445.20	\$1,873.00	\$5,529.00	\$380.00	\$380.00	-\$5,149.00	-93.13%
10.1400.800.04.0	Do Not Use	\$6,179.40	\$0.00	\$5,985.00	\$0.00	\$0.00	-\$5,985.00	-100.00%
10.1400.810.03.0	Dues and Fees	\$1,581.00	\$1,265.00	\$1,310.00	\$1,310.00	\$1,310.00	\$0.00	0.00%

Account	Description	FY18 Actual	FY19 Actual	FY20 Budget	FY21 Round 3.5	FY21 Round 4.0	\$ Diff	% Diff
10.1400.810.04.0	Dues	\$18,309.00	\$12,970.00	\$12,047.00	\$12,347.00	\$12,347.00	\$300.00	2.49%
10.1450.110.03.0	Class Trip Advisors/DC Chaperones	\$3,110.66	\$2,650.00	\$3,800.00	\$3,000.00	\$3,000.00	-\$800.00	-21.05%
10.1450.117.03.0	Extra Curricular/Dept. Chair Stiper	\$19,200.00	\$20,150.00	\$28,800.00	\$31,025.00	\$31,025.00	\$2,225.00	7.73%
10.1450.117.04.0	Extra Curricular/Dept. Chair Stiper	\$34,950.00	\$36,150.00	\$36,750.00	\$36,750.00	\$36,750.00	\$0.00	0.00%
10.1450.800.04.0	Academic Competition-Fees	\$0.00	\$55.00	\$0.00	\$6,000.00	\$6,000.00	\$6,000.00	#DIV/0!
10.1480.615.04.0	HB The Change Challenge	\$0.00	\$0.00	\$10,000.00	\$10,000.00	\$10,000.00	\$0.00	0.00%
10.1490.117.03.0	Performing Arts Stipends	\$6,275.00	\$6,875.00	\$6,875.00	\$6,875.00	\$6,875.00	\$0.00	0.00%
10.1490.117.04.0	Performing Arts Stipends	\$19,600.00	\$18,000.00	\$21,400.00	\$20,200.00	\$20,200.00	-\$1,200.00	-5.61%
10.1490.330.04.0	Contracted Services-Performing A	\$7,300.00	\$10,900.00	\$5,950.00	\$7,300.00	\$7,300.00	\$1,350.00	22.69%
10.1490.730.04.0	Addl Equipment	\$0.00	\$0.00	\$250.00	\$250.00	\$250.00	\$0.00	0.00%
10.1490.739.04.0	Replacement Equipment	\$0.00	\$0.00	\$1,250.00	\$1,250.00	\$1,250.00	\$0.00	0.00%
		<b>\$690,694.67</b>	<b>\$758,106.10</b>	<b>\$830,868.00</b>	<b>\$867,169.91</b>	<b>\$867,169.91</b>	<b>\$36,301.91</b>	<b>4.37%</b>

10.2100.323.00.0	School Resource Officer	\$0.00	\$49,266.33	\$53,000.00	\$55,000.00	\$55,000.00	\$2,000.00	3.77%
10.2100.550.00.0	Printing	\$0.00	\$0.00	\$0.00	\$400.00	\$400.00	\$400.00	#DIV/0!
10.2120.100.00.0	Student Assist Coordinator	\$19,191.90	\$0.00	\$0.00	\$0.00	\$0.00	\$0.00	#DIV/0!
10.2120.112.03.0	Salaries, Counselors	\$147,564.59	\$145,341.79	\$150,926.23	\$156,082.00	\$156,082.00	\$5,155.77	3.42%
10.2120.112.04.0	Salaries, Counselors	\$290,049.47	\$379,682.17	\$370,868.47	\$415,943.40	\$415,943.40	\$45,074.93	12.15%
10.2120.115.04	Salaries, Secretaries	\$0.00	\$0.00	\$0.00	\$0.00	\$0.00	\$0.00	#DIV/0!
10.2120.116.00.0	Database Services	\$44,050.00	\$30,132.34	\$30,418.37	\$31,392.00	\$31,392.00	\$973.63	3.20%
10.2120.117.04.0	Salary, Registrar	\$37,245.23	\$40,416.37	\$40,984.00	\$33,748.00	\$33,748.00	-\$7,236.00	-17.66%
10.2120.319.04.0	Document Management	\$0.00	\$0.00	\$0.00	\$1,350.00	\$1,350.00	\$1,350.00	#DIV/0!
10.2120.600.04.0	Hospitality Guidance	\$98.51	\$0.00	\$350.00	\$350.00	\$350.00	\$0.00	0.00%
10.2120.613.04.0	Testing	\$5,059.00	\$3,586.00	\$5,450.00	\$5,600.00	\$5,600.00	\$150.00	2.75%
10.2120.614.04.0	Expendable Supplies, Guidance	\$610.73	\$744.11	\$750.00	\$850.00	\$850.00	\$100.00	13.33%
10.2120.615.03.0	Teaching Mat, Guidance	\$821.21	\$140.00	\$0.00	\$0.00	\$0.00	\$0.00	#DIV/0!
10.2120.615.04.0	Teaching Materials, Guidance	\$0.00	\$0.00	\$448.00	\$0.00	\$0.00	-\$448.00	-100.00%
10.2120.643.04.0	Online Resources	\$0.00	\$0.00	\$650.00	\$0.00	\$0.00	-\$650.00	-100.00%
10.2120.810.04.0	Dues, Guidance	\$1,125.00	\$775.00	\$1,200.00	\$1,200.00	\$1,200.00	\$0.00	0.00%
10.2134.112.03.0	Salaries, Nurse	\$73,977.26	\$78,194.74	\$81,001.41	\$82,622.00	\$82,622.00	\$1,620.59	2.00%
10.2134.112.04.0	Salaries, Nurse	\$75,682.52	\$98,443.76	\$84,121.28	\$114,320.00	\$114,320.00	\$30,198.72	35.90%
10.2134.430.03.0	Repairs and Maintenance, Nurse	\$79.00	\$0.00	\$0.00	\$0.00	\$0.00	\$0.00	#DIV/0!
10.2134.430.04.0	Repair Equipment	\$79.00	\$0.00	\$100.00	\$100.00	\$100.00	\$0.00	0.00%
10.2134.614.03.0	Expendable Supplies, Nurse	\$1,430.32	\$1,390.94	\$2,000.00	\$1,800.00	\$1,800.00	-\$200.00	-10.00%
10.2134.614.04.0	Expendable Supplies, Nurse	\$2,954.27	\$2,008.75	\$3,300.00	\$4,000.00	\$4,000.00	\$700.00	21.21%

Account	Description	FY18 Actual	FY19 Actual	FY20 Budget	FY21 Round 3.5	FY21 Round 4.0	\$ Diff	% Diff
10.2134.730.04.0	Addl Equip	\$0.00	\$728.00	\$450.00	\$0.00	\$0.00	-\$450.00	-100.00%
10.2142.111.03.0	Salaries, Psycho-Ed	\$47,069.50	\$48,115.71	\$53,859.00	\$58,373.00	\$58,373.00	\$4,514.00	8.38%
10.2142.111.04.0	Salaries, Psycho-Ed	\$80,721.24	\$79,202.52	\$83,465.00	\$85,134.00	\$85,134.00	\$1,669.00	2.00%
10.2142.351.03.0	Psycho-Ed Evals	\$5,412.64	\$8,014.75	\$5,500.00	\$4,000.00	\$4,000.00	-\$1,500.00	-27.27%
10.2142.351.04.0	Psycho-Ed Evals	\$15,966.45	\$13,818.25	\$8,550.00	\$14,500.00	\$14,500.00	\$5,950.00	69.59%
10.2143.615.03.0	Testing Matl, Psycho-Ed	\$4,903.85	\$65.95	\$1,910.00	\$1,800.00	\$1,800.00	-\$110.00	-5.76%
10.2143.615.04.0	Testing Matl, Psycho-Ed	\$62.70	\$824.52	\$2,300.00	\$1,800.00	\$1,800.00	-\$500.00	-21.74%
10.2144.111.04.0	Salaries, Psycho Therapy	\$171,825.00	\$178,393.00	\$183,262.74	\$146,059.00	\$146,059.00	-\$37,203.74	-20.30%
10.2144.614.04.0	Teach Mats/psychothep	\$0.00	\$0.00	\$55.00	\$180.00	\$180.00	\$125.00	227.27%
10.2144.615.04.0	Psychotherapist Materials	\$0.00	\$0.00	\$55.00	\$60.00	\$60.00	\$5.00	9.09%
10.2152.111.03.0	Sal Speech Path	\$9,059.79	\$5,863.00	\$6,038.89	\$0.00	\$0.00	-\$6,038.89	-100.00%
10.2152.111.04.0	Salaries Speech\path	\$13,277.51	\$17,338.18	\$18,116.67	\$0.00	\$0.00	-\$18,116.67	-100.00%
10.2152.390.03.0	Contracted Speech Serv	\$57,470.75	\$0.00	\$71,172.15	\$114,655.37	\$114,655.37	\$43,483.22	61.10%
10.2152.390.04.0	Contracted S/I Services	\$41,986.67	\$2,280.00	\$69,896.17	\$129,261.62	\$129,261.62	\$59,365.45	84.93%
10.2152.614.03.0	Testing Mat, Speech	\$667.76	\$0.00	\$1,284.00	\$450.00	\$450.00	-\$834.00	-64.95%
10.2152.614.04.0	Testing Matl, Speech	\$388.39	\$0.00	\$0.00	\$0.00	\$0.00	\$0.00	#DIV/0!
10.2152.615.03.0	Teaching Mat, Speech	\$148.50	\$60.00	\$450.00	\$699.00	\$699.00	\$249.00	55.33%
10.2152.615.04.0	Teaching Mats Sp/lang	\$231.00	\$398.95	\$100.00	\$200.00	\$200.00	\$100.00	100.00%
10.2159.330.03.0	Vision Services/Consultation	\$2,299.00	\$5,134.84	\$6,300.00	\$5,840.00	\$5,840.00	-\$460.00	-7.30%
10.2159.330.04.0	Vision/Hearing Consulting	\$952.87	\$1,492.19	\$4,500.00	\$10,800.00	\$10,800.00	\$6,300.00	140.00%
10.2162.330.03.0	Physical Therapy	\$2,430.00	\$276.00	\$0.00	\$500.00	\$500.00	\$500.00	#DIV/0!
10.2162.330.04.0	Physical Therapy	\$4,100.00	\$1,150.00	\$5,500.00	\$3,125.00	\$3,125.00	-\$2,375.00	-43.18%
10.2163.111.00.0	Salary, OT	\$0.00	\$34,222.81	\$52,162.14	\$0.00	\$0.00	-\$52,162.14	-100.00%
10.2163.111.03.0	Salaries, Occupational Therapy	\$12,441.00	\$0.00	\$0.00	\$0.00	\$0.00	\$0.00	#DIV/0!
10.2163.111.04.0	Salaries, Occupational Therapy	\$12,441.02	\$0.00	\$0.00	\$0.00	\$0.00	\$0.00	#DIV/0!
10.2163.330.03.0	Occupational Therapy	\$0.00	\$0.00	\$0.00	\$27,000.00	\$27,000.00	\$27,000.00	#DIV/0!
10.2163.330.04.0	Occupational Therapy	\$0.00	\$0.00	\$0.00	\$27,000.00	\$27,000.00	\$27,000.00	#DIV/0!
10.2163.613.03.0	Testing Materials-Occupational Th	\$0.00	\$0.00	\$309.00	\$0.00	\$0.00	-\$309.00	-100.00%
10.2163.613.04.0	Testing Materials-Occupational Th	\$98.96	\$20.00	\$12.00	\$0.00	\$0.00	-\$12.00	-100.00%
10.2163.615.03.0	Teaching Materials-Occupational T	\$1,786.18	\$275.03	\$130.00	\$473.00	\$473.00	\$343.00	263.85%
10.2163.615.04.0	Occupational Therapy-Teaching M	\$24.98	\$119.10	\$225.00	\$0.00	\$0.00	-\$225.00	-100.00%
10.2180.301.00.0	Medicaid Billing	\$13,444.72	\$10,200.82	\$18,000.00	\$0.00	\$0.00	-\$18,000.00	-100.00%
10.2190.323.00.0	School Resource Officer	\$67,070.44	\$0.00	\$0.00	\$0.00	\$0.00	\$0.00	#DIV/0!
10.2192.111.00.0	Salary, BCBA	\$22,601.25	\$36,455.80	\$37,549.48	\$31,125.52	\$31,125.52	-\$6,423.96	-17.11%
		<b>\$1,288,900.18</b>	<b>\$1,274,571.72</b>	<b>\$1,456,720.00</b>	<b>\$1,567,792.91</b>	<b>\$1,567,792.91</b>	<b>\$111,072.91</b>	<b>7.62%</b>

Account	Description	FY18 Actual	FY19 Actual	FY20 Budget	FY21 Round 3.5	FY21 Round 4.0	\$ Diff	% Diff
10.2200.110.00.0	Negt. Support Staff Increases	\$0.00	\$0.00	\$656.41	\$0.00	\$0.00	-\$656.41	-100.00%
10.2210.112.04.0	Department Chair Stipends	\$27,403.36	\$26,591.67	\$27,395.20	\$28,799.00	\$28,799.00	\$1,403.80	5.12%
10.2210.114.00.0	Professional Development Stipend	\$78,000.00	\$30,000.00	\$84,000.00	\$105,000.00	\$105,000.00	\$21,000.00	25.00%
10.2210.115.00.0	New Hire Orientation Comm. Stipe	\$1,675.00	\$1,950.00	\$2,000.00	\$2,000.00	\$2,000.00	\$0.00	0.00%
10.2210.116.00.0	CPR/First Aid Training	-\$1,139.20	-\$458.00	\$0.00	\$0.00	\$0.00	\$0.00	#DIV/0!
10.2210.117.03.0	Mentor Stipends	\$900.00	\$300.00	\$900.00	\$900.00	\$900.00	\$0.00	0.00%
10.2210.117.04.0	Mentor Stipends	\$1,500.00	\$3,150.00	\$1,500.00	\$3,300.00	\$3,300.00	\$1,800.00	120.00%
10.2210.240.03.0	Staff Reimburse-Ms Hessa	\$1,144.00	\$603.43	\$2,200.00	\$2,000.00	\$2,000.00	-\$200.00	-9.09%
10.2210.240.04.0	Staff Reimburse-High Hessa	\$1,554.27	\$2,243.08	\$2,500.00	\$2,500.00	\$2,500.00	\$0.00	0.00%
10.2210.241.03.0	Staff Reimburse-Ms Teachers	\$30,608.68	\$19,052.18	\$50,000.00	\$30,000.00	\$30,000.00	-\$20,000.00	-40.00%
10.2210.241.04.0	Staff Reimburse-High Teachers	\$52,270.49	\$65,980.54	\$75,000.00	\$75,000.00	\$75,000.00	\$0.00	0.00%
10.2210.242.00.0	Special Ed Training	\$3,750.65	\$2,381.89	\$5,000.00	\$0.00	\$0.00	-\$5,000.00	-100.00%
10.2210.242.03.0	Staff Development	\$1,289.60	\$1,789.00	\$2,000.00	\$2,000.00	\$2,000.00	\$0.00	0.00%
10.2210.242.04.0	Staff Development	\$3,749.23	\$2,857.12	\$4,200.00	\$4,000.00	\$4,000.00	-\$200.00	-4.76%
10.2210.243.04.0	Prof Development-Database Serviv	\$4,164.15	\$4,000.02	\$5,000.00	\$4,500.00	\$4,500.00	-\$500.00	-10.00%
10.2210.244.03.0	Staff Reimburse-AHP	\$0.00	\$0.00	\$200.00	\$200.00	\$200.00	\$0.00	0.00%
10.2210.244.04.0	Staff Reimburse-AHP	\$4,998.90	\$2,504.40	\$3,000.00	\$3,000.00	\$3,000.00	\$0.00	0.00%
10.2210.245.00.0	SAU Wide PD Activities	\$2,009.77	\$2,860.47	\$3,500.00	\$3,500.00	\$3,500.00	\$0.00	0.00%
10.2210.245.03.0	Prof Develop-Admin/Non-Union	\$703.60	\$13,635.50	\$1,900.00	\$6,000.00	\$6,000.00	\$4,100.00	215.79%
10.2210.245.04.0	Prof Develop-Admin/Non-Union	\$1,841.62	\$4,155.72	\$4,000.00	\$6,000.00	\$6,000.00	\$2,000.00	50.00%
10.2210.246.00.0	Professional Development-IT	\$0.00	\$0.00	\$400.00	\$400.00	\$400.00	\$0.00	0.00%
10.2210.247.00.0	Professional Development-F/S Mg	\$764.20	\$0.00	\$3,000.00	\$2,000.00	\$2,000.00	-\$1,000.00	-33.33%
10.2210.290.04.0	Stipends For Teacher Duties	\$3,610.84	\$3,229.77	\$4,000.00	\$4,000.00	\$4,000.00	\$0.00	0.00%
10.2210.612.00.0	New Hire Orientation	\$1,267.20	\$952.32	\$1,300.00	\$1,300.00	\$1,300.00	\$0.00	0.00%
10.2210.641.03.0	Professional Books	\$103.88	\$136.05	\$200.00	\$200.00	\$200.00	\$0.00	0.00%
10.2212.321.00.0	Annual Asbestos Training	\$0.00	\$160.00	\$400.00	\$160.00	\$160.00	-\$240.00	-60.00%
10.2222.112.03.0	Salaries, Library	\$54,116.00	\$56,678.00	\$59,523.00	\$62,289.00	\$62,289.00	\$2,766.00	4.65%
10.2222.112.04.0	Salaries, Library	\$72,428.00	\$75,613.00	\$78,892.00	\$80,470.00	\$80,470.00	\$1,578.00	2.00%
10.2222.113.04.0	Salaries, Aides	\$15,157.67	\$11,635.28	\$14,543.55	\$15,749.00	\$15,749.00	\$1,205.45	8.29%
10.2222.430.03.0	Repair	\$46.98	\$0.00	\$100.00	\$100.00	\$100.00	\$0.00	0.00%
10.2222.430.04.0	Repair	\$256.06	\$0.00	\$2,500.00	\$2,000.00	\$2,000.00	-\$500.00	-20.00%
10.2222.531.04.0	Telecommunications	\$0.00	\$0.00	\$300.00	\$0.00	\$0.00	-\$300.00	-100.00%
10.2222.614.03.0	Expendable Supplies	\$639.43	\$581.21	\$650.00	\$650.00	\$650.00	\$0.00	0.00%
10.2222.614.04.0	Expendable Supplies	\$765.05	\$1,043.99	\$1,050.00	\$1,100.00	\$1,100.00	\$50.00	4.76%

Account	Description	FY18 Actual	FY19 Actual	FY20 Budget	FY21 Round 3.5	FY21 Round 4.0	\$ Diff	% Diff
10.2222.615.04.0	Teaching Mat, Lib(instr Med)	\$130.18	\$870.45	\$900.00	\$550.00	\$550.00	-\$350.00	-38.89%
10.2222.641.03.0	Books and Media	\$4,188.45	\$3,926.09	\$4,510.00	\$4,510.00	\$4,510.00	\$0.00	0.00%
10.2222.641.04.0	Books and Media	\$9,031.14	\$6,818.46	\$9,850.00	\$9,850.00	\$9,850.00	\$0.00	0.00%
10.2222.643.03.0	Online Resources	\$2,787.54	\$3,643.37	\$3,800.00	\$5,000.00	\$5,000.00	\$1,200.00	31.58%
10.2222.643.04.0	Online Resources	\$2,132.26	\$13,046.63	\$12,825.00	\$14,500.00	\$14,500.00	\$1,675.00	13.06%
10.2222.649.03.0	Publications	\$1,051.98	\$914.43	\$1,200.00	\$1,200.00	\$1,200.00	\$0.00	0.00%
10.2222.649.04.0	Publications	\$11,025.97	\$853.02	\$1,245.00	\$1,000.00	\$1,000.00	-\$245.00	-19.68%
10.2222.733.03.0	Addl Equipment	\$165.94	\$2,290.79	\$2,150.00	\$1,500.00	\$1,500.00	-\$650.00	-30.23%
10.2222.733.04.0	Addl Equipment	\$92.83	\$261.07	\$0.00	\$285.00	\$285.00	\$285.00	#DIV/0!
10.2222.737.03.0	Replacement Equipment	\$384.47	\$0.00	\$200.00	\$200.00	\$200.00	\$0.00	0.00%
10.2222.737.04.0	Replacement Equip.	\$142.61	\$155.89	\$475.00	\$350.00	\$350.00	-\$125.00	-26.32%
10.2222.738.04.0	Replacement Equipment, Electron	\$0.00	\$0.00	\$364.00	\$0.00	\$0.00	-\$364.00	-100.00%
10.2222.810.04.0	Dues	\$65.00	\$20.00	\$250.00	\$45.00	\$45.00	-\$205.00	-82.00%
10.2225.112.03.0	Salaries, IT Specialists	\$44,988.78	\$47,050.08	\$48,015.92	\$49,552.00	\$49,552.00	\$1,536.08	3.20%
10.2225.112.04.0	Salaries, IT Specialists	\$44,988.70	\$47,050.08	\$48,015.92	\$49,552.00	\$49,552.00	\$1,536.08	3.20%
10.2225.434.03.0	Computer Repairs-IT Dept.	\$284.27	\$243.89	\$2,000.00	\$2,000.00	\$2,000.00	\$0.00	0.00%
10.2225.434.04.0	Computer Repairs-IT Dept	\$1,048.62	\$1,487.36	\$2,000.00	\$2,000.00	\$2,000.00	\$0.00	0.00%
10.2225.614.00.0	Technology Supplies-IT Dept	\$0.00	\$140.20	\$0.00	\$0.00	\$0.00	\$0.00	#DIV/0!
10.2225.614.03.0	Techonogy Supplies-IT Dept	\$308.01	\$461.50	\$2,000.00	\$2,000.00	\$2,000.00	\$0.00	0.00%
10.2225.614.04.0	Technology Supplies-IT Dept	\$943.62	\$511.44	\$3,000.00	\$3,000.00	\$3,000.00	\$0.00	0.00%
10.2225.615.03.0	Instruction Specific IT Supplies	\$0.00	\$1,084.54	\$1,200.00	\$1,200.00	\$1,200.00	\$0.00	0.00%
10.2225.615.04.0	Instruction Specific IT Supplies	\$835.90	\$518.44	\$1,200.00	\$1,200.00	\$1,200.00	\$0.00	0.00%
10.2225.734.03.0	Additional Computer Equipment	\$17,149.10	\$27,122.63	\$12,396.00	\$12,260.00	\$12,260.00	-\$136.00	-1.10%
10.2225.734.04.0	Additional Computer Equipment	\$31,543.49	\$40,633.52	\$33,750.00	\$97,750.00	\$92,750.00	\$59,000.00	174.81%
10.2225.738.03.0	Replacement Computer Equipmen	\$3,843.87	\$8,923.00	\$16,950.00	\$29,705.00	\$29,705.00	\$12,755.00	75.25%
10.2225.738.04.0	Replacement Computer Equipmen	\$4,963.87	\$28,831.16	\$14,000.00	\$38,625.00	\$40,975.00	\$26,975.00	192.68%
		<b>\$547,676.03</b>	<b>\$570,484.68</b>	<b>\$664,107.00</b>	<b>\$776,951.00</b>	<b>\$774,301.00</b>	<b>\$110,194.00</b>	<b>16.59%</b>

10.2310.110.00.0	School Board Stipends	\$3,300.00	\$3,248.06	\$3,300.00	\$3,300.00	\$3,300.00	\$0.00	0.00%
10.2310.320.00.0	School Board Training	\$105.00	\$0.00	\$0.00	\$0.00	\$0.00	\$0.00	#DIV/0!
10.2310.540.00.0	Advertising	\$957.15	\$873.60	\$2,000.00	\$1,500.00	\$1,500.00	-\$500.00	-25.00%
10.2310.614.00.0	School Board Expenses	\$1,417.50	\$744.66	\$1,500.00	\$1,500.00	\$1,500.00	\$0.00	0.00%
10.2310.810.00.0	Dues	\$4,612.12	\$4,962.12	\$4,800.00	\$5,200.00	\$5,200.00	\$400.00	8.33%
10.2310.840.00.0	Contingency	\$0.00	\$0.00	\$100,000.00	\$100,000.00	\$100,000.00	\$0.00	0.00%
10.2311.301.00.0	Public Hear/district Mtg Exp	\$8,933.32	\$8,041.64	\$6,000.00	\$9,000.00	\$9,000.00	\$3,000.00	50.00%

Account	Description	FY18 Actual	FY19 Actual	FY20 Budget	FY21 Round 3.5	FY21 Round 4.0	\$ Diff	% Diff
10.2311.303.00.0	Cost of 2018 Bonds	\$27,078.48	\$0.00	\$0.00	\$0.00	\$0.00	\$0.00	#DIV/0!
10.2312.110.00.0	School Board Secretary	\$2,690.00	\$2,540.00	\$2,959.00	\$2,800.00	\$2,800.00	-\$159.00	-5.37%
10.2313.110.00.0	District Treasurer Stipend	\$1,000.00	\$1,000.00	\$1,000.00	\$1,000.00	\$1,000.00	\$0.00	0.00%
10.2316.301.00.0	Negotiations	\$11,727.51	\$1,890.96	\$0.00	\$12,000.00	\$12,000.00	\$12,000.00	#DIV/0!
10.2317.301.00.0	Audit	\$11,500.00	\$12,000.00	\$12,000.00	\$12,000.00	\$12,000.00	\$0.00	0.00%
10.2318.301.00.0	Legal Services	\$45,896.24	\$14,717.76	\$37,000.00	\$18,000.00	\$18,000.00	-\$19,000.00	-51.35%
10.2318.302.04.0	Legal-Turf Field	\$0.00	\$5,308.31	\$0.00	\$0.00	\$0.00	\$0.00	#DIV/0!
10.2320.310.00.0	Sau Assessment	\$754,647.96	\$806,808.00	\$878,364.00	\$910,255.00	\$910,255.00	\$31,891.00	3.63%
		<b>\$873,865.28</b>	<b>\$862,135.11</b>	<b>\$1,048,923.00</b>	<b>\$1,076,555.00</b>	<b>\$1,076,555.00</b>	<b>\$27,632.00</b>	<b>2.63%</b>

10.2400.110.00.0	Negt. Support Staff Increases	\$0.00	\$0.00	\$7,704.83	\$0.00	\$0.00	-\$7,704.83	-100.00%
10.2400.110.03.0	Salaries, Administrators	\$202,193.00	\$213,739.95	\$213,441.75	\$198,456.90	\$198,456.90	-\$14,984.85	-7.02%
10.2400.110.04.0	Salaries, Administrators	\$299,981.00	\$308,267.00	\$317,515.01	\$326,367.00	\$326,367.00	\$8,851.99	2.79%
10.2400.115.03.0	Salaries, Secretaries	\$77,660.35	\$72,531.60	\$72,249.01	\$80,199.50	\$80,199.50	\$7,950.49	11.00%
10.2400.115.04.0	Salaries, Secretaries	\$109,991.40	\$112,791.87	\$113,058.40	\$119,805.00	\$119,805.00	\$6,746.60	5.97%
10.2400.119.04.0	Salaries, Admin Clerk	\$994.50	\$306.00	\$0.00	\$0.00	\$0.00	\$0.00	#DIV/0!
10.2400.300.00.0	Prof Services-Strategic Planning	\$12,000.00	\$12,000.00	\$12,000.00	\$12,000.00	\$12,000.00	\$0.00	0.00%
10.2400.319.03.0	First Report of Injury Penalty	\$250.00	\$0.00	\$0.00	\$0.00	\$0.00	\$0.00	#DIV/0!
10.2400.331.00.0	Professional Services	\$0.00	\$105.00	\$0.00	\$0.00	\$0.00	\$0.00	#DIV/0!
10.2400.332.00.0	Consulting Services	\$0.00	\$4,669.00	\$5,000.00	\$5,000.00	\$5,000.00	\$0.00	0.00%
10.2400.340.03.0	Print Management	\$1,659.60	\$1,659.22	\$2,100.00	\$1,900.00	\$1,900.00	-\$200.00	-9.52%
10.2400.340.04.0	Print Management	\$4,665.38	\$2,735.04	\$5,800.00	\$2,800.00	\$2,800.00	-\$3,000.00	-51.72%
10.2400.442.03.0	Copier Lease	\$0.00	\$4,861.00	\$4,861.00	\$4,861.00	\$4,861.00	\$0.00	0.00%
10.2400.442.04.0	Copier Lease	\$10,570.00	\$12,932.00	\$15,044.00	\$6,586.00	\$6,586.00	-\$8,458.00	-56.22%
10.2400.443.03.0	Copier Overages	\$0.00	\$0.00	\$0.00	\$675.00	\$675.00	\$675.00	#DIV/0!
10.2400.443.04.0	Copier Overages	\$0.00	\$0.00	\$0.00	\$2,050.00	\$2,050.00	\$2,050.00	#DIV/0!
10.2400.490.03.0	Service Agreements	\$7,535.45	\$7,326.68	\$8,200.00	\$7,500.00	\$7,500.00	-\$700.00	-8.54%
10.2400.490.04.0	Service Agreements	\$15,879.29	\$16,090.76	\$20,200.00	\$18,500.00	\$18,500.00	-\$1,700.00	-8.42%
10.2400.530.03.0	Phone-Contract-Admin	\$0.00	\$0.00	\$0.00	\$3,400.00	\$3,400.00	\$3,400.00	#DIV/0!
10.2400.530.04.0	Phone-Contract-Admin	\$0.00	\$0.00	\$0.00	\$5,400.00	\$5,400.00	\$5,400.00	#DIV/0!
10.2400.531.03.0	Telephone	\$20,476.50	\$21,063.21	\$19,300.00	\$19,300.00	\$19,300.00	\$0.00	0.00%
10.2400.531.04.0	Telephone	\$12,137.46	\$15,370.91	\$13,300.00	\$13,300.00	\$13,300.00	\$0.00	0.00%
10.2400.532.00.0	Network Services	\$34,290.73	\$34,290.00	\$38,000.00	\$35,000.00	\$35,000.00	-\$3,000.00	-7.89%
10.2400.534.03.0	Postage	\$1,115.59	\$1,278.60	\$1,400.00	\$1,700.00	\$1,700.00	\$300.00	21.43%
10.2400.534.04.0	Postage	\$3,688.50	\$5,382.57	\$5,050.00	\$5,800.00	\$5,800.00	\$750.00	14.85%



Account	Description	FY18 Actual	FY19 Actual	FY20 Budget	FY21 Round 3.5	FY21 Round 4.0	\$ Diff	% Diff
10.2600.310.00.0	Bldg & Grnds, Maint Svcs	\$0.00	\$1,560.00	\$0.00	\$0.00	\$0.00	\$0.00	#DIV/0!
10.2600.391.03.0	Inspections	\$8,004.16	\$5,721.27	\$7,600.00	\$8,050.00	\$8,050.00	\$450.00	5.92%
10.2600.391.04.0	Inspections	\$8,949.17	\$5,711.12	\$9,700.00	\$9,700.00	\$9,700.00	\$0.00	0.00%
10.2600.392.00.0	3 YR Asbestos Inspection-HBMS	\$250.00	\$0.00	\$0.00	\$0.00	\$0.00	\$0.00	#DIV/0!
10.2600.402.03.0	Pest Control	\$19.95	\$0.00	\$500.00	\$500.00	\$500.00	\$0.00	0.00%
10.2600.402.04.0	Pest Control	\$0.00	\$495.00	\$500.00	\$500.00	\$500.00	\$0.00	0.00%
10.2600.411.03.0	Water System Maintenance	\$1,085.74	\$1,535.81	\$500.00	\$2,000.00	\$2,000.00	\$1,500.00	300.00%
10.2600.411.04.0	Water System Maintenance	\$5,927.80	\$9,709.77	\$3,000.00	\$7,000.00	\$7,000.00	\$4,000.00	133.33%
10.2600.413.03.0	Regular Water Testing	\$0.00	\$1,395.00	\$1,280.00	\$1,500.00	\$1,500.00	\$220.00	17.19%
10.2600.413.04.0	Regular Water Testing	\$0.00	\$4,600.00	\$6,000.00	\$5,000.00	\$5,000.00	-\$1,000.00	-16.67%
10.2600.414.03.0	SB247 Water Testing	\$0.00	\$1,575.00	\$5,000.00	\$2,000.00	\$2,000.00	-\$3,000.00	-60.00%
10.2600.414.04.0	SB247 Water Testing	\$0.00	\$3,498.00	\$5,000.00	\$4,000.00	\$4,000.00	-\$1,000.00	-20.00%
10.2600.421.03.0	Trash Removal	\$10,848.37	\$9,298.88	\$11,000.00	\$10,500.00	\$10,500.00	-\$500.00	-4.55%
10.2600.421.04.0	Trash Removal	\$19,886.01	\$17,707.46	\$20,900.00	\$20,000.00	\$20,000.00	-\$900.00	-4.31%
10.2600.422.03.0	Snow Removal	\$22,328.10	\$17,164.97	\$28,000.00	\$27,000.00	\$27,000.00	-\$1,000.00	-3.57%
10.2600.422.04.0	Snow Removal	\$54,207.29	\$42,174.17	\$60,000.00	\$60,000.00	\$60,000.00	\$0.00	0.00%
10.2600.424.03.0	Contracted Grounds/Mowing	\$13,930.03	\$13,680.03	\$18,770.00	\$20,647.00	\$20,647.00	\$1,877.00	10.00%
10.2600.424.04.0	Contracted Grounds/Mowing	\$22,419.97	\$22,669.97	\$24,435.00	\$26,878.50	\$26,878.50	\$2,443.50	10.00%
10.2600.430.03.0	Repair Maintenance Equipment	\$1,109.40	\$0.00	\$1,500.00	\$4,000.00	\$4,000.00	\$2,500.00	166.67%
10.2600.430.04.0	Repair Maint Equip	\$1,526.37	\$378.50	\$1,800.00	\$1,800.00	\$1,800.00	\$0.00	0.00%
10.2600.431.03.0	Heating/ventilating Svcs	\$6,475.97	\$1,572.41	\$8,000.00	\$8,000.00	\$8,000.00	\$0.00	0.00%
10.2600.431.04.0	Heating/ventilation Svcs	\$7,159.61	\$5,151.06	\$10,000.00	\$10,000.00	\$10,000.00	\$0.00	0.00%
10.2600.432.03.0	Fire/alarm Svcs	\$516.00	\$2,025.00	\$2,000.00	\$2,200.00	\$2,200.00	\$200.00	10.00%
10.2600.432.04.0	Fire/alarm Svcs	\$4,237.62	\$385.80	\$4,000.00	\$4,000.00	\$4,000.00	\$0.00	0.00%
10.2600.433.03.0	Plumbing Maintenance	\$3,611.54	\$5,103.06	\$3,050.00	\$5,000.00	\$5,000.00	\$1,950.00	63.93%
10.2600.433.04.0	Plumbing Maintenance	\$1,590.23	\$2,359.64	\$2,500.00	\$3,000.00	\$3,000.00	\$500.00	20.00%
10.2600.434.03.0	Electrical Maintenance	\$1,227.00	\$4,164.00	\$1,500.00	\$5,000.00	\$5,000.00	\$3,500.00	233.33%
10.2600.434.04.0	Electrical Maintenance	\$1,814.04	\$2,413.45	\$3,500.00	\$3,500.00	\$3,500.00	\$0.00	0.00%
10.2600.436.03.0	Septic System Svcs	\$2,625.00	\$2,625.00	\$2,800.00	\$2,700.00	\$2,700.00	-\$100.00	-3.57%
10.2600.436.04.0	Septic System Svcs	\$3,600.00	\$3,600.00	\$3,600.00	\$3,700.00	\$3,700.00	\$100.00	2.78%
10.2600.437.03.0	Painting	\$823.99	\$510.10	\$925.00	\$1,000.00	\$1,000.00	\$75.00	8.11%
10.2600.437.04.0	Painting	\$286.18	\$242.73	\$1,000.00	\$1,000.00	\$1,000.00	\$0.00	0.00%
10.2600.438.03.0	Building Repairs	\$11,154.44	\$4,001.71	\$9,000.00	\$10,000.00	\$10,000.00	\$1,000.00	11.11%
10.2600.438.04.0	Building Repairs	\$12,911.29	\$4,080.62	\$9,000.00	\$10,000.00	\$10,000.00	\$1,000.00	11.11%
10.2600.439.03.0	General Maintenance	\$13,000.93	\$15,281.50	\$14,000.00	\$15,960.00	\$15,960.00	\$1,960.00	14.00%

Account	Description	FY18 Actual	FY19 Actual	FY20 Budget	FY21 Round 3.5	FY21 Round 4.0	\$ Diff	% Diff
10.2600.439.04.0	General Maintenance	\$16,378.29	\$16,104.45	\$18,000.00	\$17,000.00	\$17,000.00	-\$1,000.00	-5.56%
10.2600.490.03.0	Service Contracts	\$5,657.00	\$6,277.00	\$6,600.00	\$11,193.00	\$11,193.00	\$4,593.00	69.59%
10.2600.490.04.0	Service Contracts	\$6,572.00	\$7,523.00	\$22,230.00	\$14,812.00	\$14,812.00	-\$7,418.00	-33.37%
10.2600.520.00.0	Insurance Liability	\$61,269.00	\$62,601.00	\$59,836.00	\$61,691.00	\$61,691.00	\$1,855.00	3.10%
10.2600.531.00.0	Telephone	\$757.52	\$715.45	\$760.00	\$500.00	\$500.00	-\$260.00	-34.21%
10.2600.580.00.0	Travel	\$0.00	\$0.00	\$200.00	\$200.00	\$200.00	\$0.00	0.00%
10.2600.580.03.0	Travel	\$0.00	\$0.00	\$200.00	\$250.00	\$250.00	\$50.00	25.00%
10.2600.580.04.0	Travel	\$163.50	\$191.25	\$250.00	\$250.00	\$250.00	\$0.00	0.00%
10.2600.614.00.0	Expendable Supplies	\$488.92	\$429.69	\$450.00	\$450.00	\$450.00	\$0.00	0.00%
10.2600.614.03.0	Expendable Supplies	\$12,051.93	\$11,778.68	\$14,000.00	\$14,000.00	\$14,000.00	\$0.00	0.00%
10.2600.614.04.0	Expendable Supplies	\$30,280.33	\$16,573.96	\$30,000.00	\$28,000.00	\$28,000.00	-\$2,000.00	-6.67%
10.2600.621.04.0	Utility Svcs Gas	\$616.84	\$869.80	\$800.00	\$950.00	\$950.00	\$150.00	18.75%
10.2600.622.03.0	Utility Svcs Lighting	\$68,982.77	\$61,408.69	\$70,000.00	\$68,000.00	\$68,000.00	-\$2,000.00	-2.86%
10.2600.622.04.0	Utility Svcs Lighting	\$136,531.78	\$125,326.01	\$125,000.00	\$137,000.00	\$137,000.00	\$12,000.00	9.60%
10.2600.624.03.0	Utility Svcs Oil	\$38,879.54	\$49,665.30	\$50,000.00	\$55,000.00	\$55,000.00	\$5,000.00	10.00%
10.2600.624.04.0	Utility Svcs Oil	\$52,061.52	\$73,938.77	\$71,000.00	\$80,000.00	\$80,000.00	\$9,000.00	12.68%
10.2600.731.03.0	Additional Equipment	\$759.05	\$0.00	\$2,500.00	\$2,500.00	\$2,500.00	\$0.00	0.00%
10.2600.731.04.0	Addl Equipment	\$398.00	\$0.00	\$2,500.00	\$2,500.00	\$2,500.00	\$0.00	0.00%
10.2600.735.03.0	Replacement Equipment	\$629.50	\$1,071.17	\$1,000.00	\$7,000.00	\$7,000.00	\$6,000.00	600.00%
10.2600.735.04.0	Replacement Equipment	\$0.00	\$0.00	\$1,000.00	\$1,000.00	\$1,000.00	\$0.00	0.00%
10.2600.893.00.0	HBMS-FY Bldg/Maint. Upgrades	\$0.00	\$18,397.66	\$21,300.00	\$0.00	\$0.00	-\$21,300.00	-100.00%
10.2600.894.00.0	HBHS-FY Bldg/Maint. Upgrades	\$0.00	\$55,922.72	\$14,000.00	\$0.00	\$0.00	-\$14,000.00	-100.00%
10.2600.896.00.0	PSIF Grant - District Portion	\$0.00	\$9,865.37	\$0.00	\$0.00	\$0.00	\$0.00	#DIV/0!
10.2630.610.03.0	Crosswalk Supplies	\$1,295.28	\$0.00	\$0.00	\$0.00	\$0.00	\$0.00	#DIV/0!
		<b>\$1,156,210.30</b>	<b>\$1,201,284.28</b>	<b>\$1,307,569.00</b>	<b>\$1,296,186.26</b>	<b>\$1,332,410.11</b>	<b>\$24,841.11</b>	<b>1.90%</b>

10.2700.510.03.0	Reg Ed-Transportation-Contract-V	\$218,742.50	\$224,598.29	\$269,224.11	\$275,948.00	\$275,948.00	\$6,723.89	2.50%
10.2700.510.04.0	Reg Ed-Transportation-Contract-V	\$218,742.60	\$224,598.30	\$269,224.11	\$275,948.00	\$275,948.00	\$6,723.89	2.50%
10.2700.511.04.0	Reg Ed-Field Trips-Vendor	\$795.00	\$0.00	\$0.00	\$0.00	\$0.00	\$0.00	#DIV/0!
10.2700.626.03.0	Reg Ed-Gasoline/diesel Fuel-Vend	\$27,925.25	\$32,492.68	\$32,500.00	\$32,500.00	\$32,500.00	\$0.00	0.00%
10.2700.626.04.0	Reg Ed-Gasoline/diesel Fuel-Vend	\$30,584.76	\$32,573.45	\$33,500.00	\$33,500.00	\$33,500.00	\$0.00	0.00%
10.2721.510.03.0	Reg Ed Transportation-BH & Other	\$12,192.30	\$11,356.40	\$10,389.50	\$12,568.00	\$12,568.00	\$2,178.50	20.97%
10.2721.510.04.0	Reg Ed Transportation-BH & Other	\$18,598.15	\$14,010.64	\$13,389.50	\$15,568.00	\$15,568.00	\$2,178.50	16.27%
10.2722.430.00.0	Spec Ed Van Repairs/Maintenance	\$47.60	\$97.88	\$50.00	\$400.00	\$400.00	\$350.00	700.00%
10.2722.510.03.0	Spec Ed-Transportation-Vendor	\$47,847.64	\$81,103.86	\$125,028.00	\$76,889.40	\$76,889.40	-\$48,138.60	-38.50%
10.2722.510.04.0	Spec Ed-Transportation-Vendor	\$290,496.93	\$267,126.18	\$413,947.78	\$359,940.00	\$359,940.00	-\$54,007.78	-13.05%
10.2722.511.03.0	Spec Ed-Field Trips-Vendor	\$198.00	\$0.00	\$0.00	\$5,000.00	\$5,000.00	\$5,000.00	#DIV/0!

Account	Description	FY18 Actual	FY19 Actual	FY20 Budget	FY21 Round 3.5	FY21 Round 4.0	\$ Diff	% Diff
10.2722.511.04.0	Spec Ed-Field Trips-Vendor	\$0.00	\$0.00	\$0.00	\$13,500.00	\$13,500.00	\$13,500.00	#DIV/0!
10.2722.520.00.0	Spec Ed Van /Reg/Inspection	\$0.00	\$90.00	\$0.00	\$150.00	\$150.00	\$150.00	#DIV/0!
10.2722.626.00.0	Spec Ed-Van Gas Card Purchases	\$1,150.27	\$801.43	\$1,300.00	\$3,000.00	\$3,000.00	\$1,700.00	130.77%
10.2722.739.00.0	Spec Ed Van-RSA Required Purcha	\$0.00	\$0.00	\$0.00	\$200.00	\$200.00	\$200.00	#DIV/0!
10.2723.510.04.0	Voc Ed Transportation-Vendor	\$162,044.70	\$206,248.45	\$105,000.00	\$105,000.00	\$105,000.00	\$0.00	0.00%
		<b>\$1,029,365.70</b>	<b>\$1,095,097.56</b>	<b>\$1,273,553.00</b>	<b>\$1,210,111.40</b>	<b>\$1,210,111.40</b>	<b>-\$63,441.60</b>	<b>-4.98%</b>

10.2900.134.00.0	Health Insurance Opt Out	\$80,333.34	\$76,108.67	\$82,250.00	\$85,900.00	\$85,900.00	\$3,650.00	4.44%
10.2900.207.00.0	Longevity Bonus - Support Staff	\$5,750.00	\$1,500.00	\$10,000.00	\$500.00	\$500.00	-\$9,500.00	-95.00%
10.2900.211.00.0	Health Insurance	\$1,734,190.35	\$1,847,326.24	\$2,118,878.00	\$2,002,278.00	\$2,002,278.00	-\$116,600.00	-5.50%
10.2900.212.00.0	Dental Insurance	\$143,761.90	\$156,100.71	\$166,308.23	\$170,081.00	\$170,081.00	\$3,772.77	2.27%
10.2900.213.00.0	Life, Ltd, Ad&d	\$52,194.52	\$55,076.33	\$67,026.09	\$60,350.00	\$60,350.00	-\$6,676.09	-9.96%
10.2900.215.00.0	Flex Benefit	\$889.63	-\$2,302.41	\$0.00	\$0.00	\$0.00	\$0.00	#DIV/0!
10.2900.217.03.0	Merit Increases - HBMS	\$10,000.00	\$0.00	\$0.00	\$0.00	\$0.00	\$0.00	#DIV/0!
10.2900.217.04.0	Merit Increases - HBHS	\$22,000.00	\$0.00	\$0.00	\$0.00	\$0.00	\$0.00	#DIV/0!
10.2900.218.00.0	403(b) Matching	\$6,800.00	\$6,433.89	\$6,800.00	\$9,000.00	\$9,000.00	\$2,200.00	32.35%
10.2900.220.00.0	Fica	\$780,035.46	\$818,688.52	\$876,038.77	\$909,908.00	\$909,908.00	\$33,869.23	3.87%
10.2900.231.00.0	Employee Retirement	\$104,685.28	\$101,956.05	\$129,706.53	\$120,894.00	\$120,894.00	-\$8,812.53	-6.79%
10.2900.232.00.0	Teacher Retirement	\$1,447,601.76	\$1,515,837.19	\$1,612,895.60	\$1,705,763.00	\$1,705,763.00	\$92,867.40	5.76%
10.2900.239.00.0	Retirement Benefit	\$42,559.59	\$91,467.98	\$104,661.78	\$104,661.78	\$48,908.15	-\$55,753.63	-53.27%
10.2900.250.00.0	Unemployment Compensation	\$11,622.00	\$11,622.00	\$11,622.00	\$11,622.00	\$11,622.00	\$0.00	0.00%
10.2900.260.00.0	Workmans Compensation	\$36,176.00	\$36,175.00	\$39,793.00	\$43,772.00	\$43,772.00	\$3,979.00	10.00%
10.2900.292.00.0	Shoe Allowance-Support Staff	\$227.00	\$289.99	\$2,000.00	\$500.00	\$500.00	-\$1,500.00	-75.00%
10.2900.610.00.0	ADA-Accommodations	\$269.00	\$0.00	\$0.00	\$0.00	\$0.00	\$0.00	0.00%
		<b>\$4,479,095.83</b>	<b>\$4,716,280.16</b>	<b>\$5,227,980.00</b>	<b>\$5,225,229.78</b>	<b>\$5,169,476.15</b>	<b>-\$58,503.85</b>	<b>-83.09%</b>

10.4200.710.00.0	Day Tanks	\$0.00	\$0.00	\$39,564.00	\$0.00	\$0.00	-\$39,564.00	-100.00%
	Robotics Warrant			\$98,832.00	\$0.00	\$0.00	-\$98,832.00	
10.4200.711.00.0	Site Improvements, FY19	\$0.00	\$92,719.30	\$0.00	\$0.00	\$0.00	\$0.00	0.00%
		<b>\$0.00</b>	<b>\$92,719.30</b>	<b>\$138,396.00</b>	<b>\$0.00</b>	<b>\$0.00</b>	<b>-\$138,396.00</b>	<b>-100.00%</b>

10.4300.720.04.0	Architectural Fees	<b>\$5,097.61</b>	<b>\$2,098.28</b>	<b>\$0.00</b>	<b>\$0.00</b>	<b>\$0.00</b>	<b>\$0.00</b>	<b>0.00%</b>
------------------	--------------------	-------------------	-------------------	---------------	---------------	---------------	---------------	--------------

10.5100.830.00.0	Interest-Bond	\$177,367.00	\$155,867.00	\$177,804.00	\$167,977.35	\$167,977.35	-\$9,826.65	-5.53%
10.5100.910.00.0	Principal-Bond	\$420,000.00	\$440,000.00	\$621,860.00	\$627,622.54	\$627,622.54	\$5,762.54	0.93%
10.5110.911.00.	Principal-Van Lease	\$0.00	\$0.00	\$0.00	\$12,522.35	\$12,522.35	\$12,522.35	#DIV/0!

Account	Description	FY18 Actual	FY19 Actual	FY20 Budget	FY21 Round 3.5	FY21 Round 4.0	\$ Diff	% Diff
10.5120.831.00	Interest-Van Lease	\$0.00	\$0.00	\$0.00	\$2,105.63	\$2,105.63	\$2,105.63	#DIV/0!
		<b>\$597,367.00</b>	<b>\$595,867.00</b>	<b>\$799,664.00</b>	<b>\$810,227.87</b>	<b>\$810,227.87</b>	<b>\$10,563.87</b>	<b>1.32%</b>

10.5221.930.00.0	Transfer To Food Service	\$398,587.00	\$412,877.00	\$394,000.00	\$400,000.00	\$400,000.00	\$6,000.00	1.52%
10.5222.930.00.0	Trnsfr To Special Revenue Fund	\$252,394.00	\$270,715.00	\$260,000.00	\$260,000.00	\$260,000.00	\$0.00	0.00%
	HESSA Contract	\$0.00	\$0.00	\$0.00				
10.5252.930.00.0	Transfer to Athletic Trust	\$67,000.00	\$66,132.50	\$67,000.00	\$67,000.00	\$67,000.00	\$0.00	0.00%
10.5253.930.00.0	Transfer to Maintenance Trust	\$20,000.00	\$40,000.00	\$75,000.00	\$310,000.00	\$200,000.00	\$125,000.00	166.67%
10.5254.930.00.0	Transfer to Spec Ed Trust	\$100,000.00	\$50,000.00	\$25,000.00	\$25,000.00	\$25,000.00	\$0.00	0.00%
		<b>\$837,981.00</b>	<b>\$839,724.50</b>	<b>\$821,000.00</b>	<b>\$1,062,000.00</b>	<b>\$952,000.00</b>	<b>\$131,000.00</b>	<b>15.96%</b>

<b>\$21,461,608.94</b>	<b>\$22,123,977.37</b>	<b>\$24,428,319.00</b>	<b>\$24,977,434.71</b>	<b>\$24,876,991.08</b>	<b>\$448,672.08</b>	<b>1.84%</b>
------------------------	------------------------	------------------------	------------------------	------------------------	---------------------	--------------

	FY20	FY21-RND 3.5	FY21-RND 4.0		
Operating Budget	\$23,282,955.00	\$23,484,040.71	\$23,493,597.08	\$210,642.08	0.90%
HESSA Contract		\$81,139.00	\$81,139.00		
Contingency	\$100,000.00	\$100,000.00	\$100,000.00		
Athletic Trust	\$67,000.00	\$67,000.00	\$67,000.00		
Maint Trust	\$75,000.00	\$310,000.00	\$200,000.00		
Spec Ed Trust	\$25,000.00	\$25,000.00	\$25,000.00		
SAU	\$878,364.00	\$910,255.00	\$910,255.00		
	<b>\$24,428,319.00</b>	<b>\$24,977,434.71</b>	<b>\$24,876,991.08</b>	<b>\$448,672.08</b>	<b>1.84%</b>

See also [IHBH](#), [IHCD](#), [IKF](#), [IKFA](#), & [IMBA](#)

## **ALTERNATIVE CREDIT OPTIONS**

The Hollis Brookline Cooperative School Board recognizes that alternative credit options are important to address the diverse instructional needs of all students. The Board's intent is to improve student achievement by allowing students to engage in educational experiences that allow for differential instruction and/or increased rigor outside of the high school classroom.

Approved alternative credit options are consistent with all policies of the board.

Alternative credit options may receive credit to be applied toward high school graduation. Credit and the numerical value will be pre-determined by the high school principal or ~~his/her~~ their designee. The granting of credit may be based upon the following criteria: the course, the program, the activity in which the student wishes to participate, seat time, the level of instructional rigor, and/or the details of the option.

Students must complete an Alternative Credit Application to receive credit or recognition in any form prior to participation in the alternative option. The written approval of the principal or ~~his/her~~ their designee is also required before participating in an alternative credit option.

Students taking approved alternative credit options must be enrolled in the district. Students may take classes during the regular school day with pre-approval by the principal or ~~his/her~~ their designee. Administration may grant approval for outside of school learning based on special circumstances. A reduced day form shall accompany this request if the student falls below the 6.0 credit requirement.

The Alternative Credit Application request should include a plan to achieve competency that meets or exceeds the rigorous academic standards required by the school for students enrolled in a credit course offered by the school.

The plan shall include clear expectations for performance.

The plan shall include clearly defined methods and expectations for assessment.

It is the responsibility of the student to furnish this information with the application. Verification of the plan's merit can be evaluated in a timely fashion and should not cause unnecessary burden on the resources of the administration.

Appeals can be brought to an Academic Review Committee as referenced in the student handbook.

Alternative credit options may be taken in the summer under the same conditions as during the school year.

Students who are permitted to take alternative credit options during the school day may be assigned a teacher to monitor student progress, grade assignments, and supervise testing. This provision will reflect special circumstances, and require supporting documentation and principal (or ~~his/her~~ their designee) pre-approval. A teacher may supervise no more than ten students participating in online/internet-based courses.

The Board will support educational options for atypical students for whom regular classrooms are not practical or effective. Students earning credit via alternative methods will participate in all assessments required by the statewide education improvement and assessment program.

It is the policy of the Board that alternative methods for the awarding of credit may include:

- Competency testing in lieu of enrollment
- Interdisciplinary credit
- Satisfactory completion of course requirements at another public school district, an approved private school or a home-schooling experience
- Transfer of credits earned by students before enrolling in the district, such as students moving into New Hampshire from another state or country
- Extended learning opportunities under the provisions of Policy [IHBH](#)
- Online/internet-based opportunities under the provisions of Policy [IMBA](#)
- College Credit/Dual Credit
- Early Graduation

If a student demonstrates knowledge and abilities on a placement pre-test developed by the school district for a particular course, the student shall not receive credit for the course, but shall be allowed to take a more advanced level of the subject or an elective.

### **Funding**

Unless otherwise recommended by the Superintendent and approved by the Board, under ordinary circumstances students or their parents/guardians are responsible for all related expenses including tuition and textbooks. The District may pay the fee for expelled students who are permitted to take courses in alternative settings. If paid by the district and the course is not completed, the student must reimburse the district for the expenses.

### **Legal Reference:**

*NH Code of Administrative Rules, Section Ed. 306.04(a)(6, 12, 14), Policy Development*

*NH Code of Administrative Rules, Section Ed. 306.26, Kindergarten - Grade 8 School Curriculum*

*NH Code of Administrative Rules, Section Ed. 306.27(c), High School Curriculum, Credits, Graduation Requirements, and Cocurricular Program*

*NH Code of Administrative Rules, Section Ed. 306.27(d), High School Curriculum, Credits, Graduation Requirements, and Cocurricular Program*

1st Reading: August 8, 2007

Adopted: May 21, 2008

Amended/Re-adopted: February 15, 2012

Amended: May 21, 2014

Amended/1<sup>st</sup> Reading: October 16, 2019

Amended/2<sup>nd</sup> Reading: November 13, 2019

Amended/3<sup>rd</sup> Reading: December 11, 2019

See also [IKF](#), [IMBA](#), and [IMBC](#)

## **EXTENDED LEARNING OPPORTUNITIES**

It is the policy of the Hollis Brookline Cooperative School Board to allow extended learning opportunities as a means of meeting the diverse instructional needs of all students with different talents, interests, and development. The Board's intent is to improve student achievement in situations where regular classrooms are not practical or effective.

Approved extended learning opportunities are consistent with all policies of this board.

Such opportunities may provide credit (under provisions of Policy [IMBC](#)) or supplement regular academic courses. Credits can be granted for extended learning activities, including, but not limited to, independent study, internships, community service, and work study. Where credit is not granted, such experiences may be used to fulfill prerequisite requirements for advanced courses.

All extended learning opportunities must be pre-approved by the principal or ~~his/her~~ their designee. Students must complete an Alternative Credit Application to receive credit or recognition in any form. The written approval of the principal or ~~his/her~~ their designee is required before the student participates in any extended learning opportunity. The granting of credit shall be based on a student's demonstration of course competencies, as approved by the principal or ~~his/her~~ their designee and in consultation with the department chair. Students applying for permission for an extended learning opportunity must first meet with their counselor to review the request in the context of their academic plan and graduation requirements. Students are responsible for the selecting, organizing, and carrying out of extended learning activities.

Extended learning opportunities must align with state and local standards and be relevant to the academic standards of the high school. The district will require that documentation be provided to include specific learning goals/objectives/activities, student evaluation criteria, and certified instructor requirements for monitoring progress and feedback.

Extended learning opportunities may be limited two per school year and six maximum in a high school career. Appeals for situations falling outside of the rules can be brought to the Academic Review Committee as referenced in the student handbook and will require principal or ~~his/her~~ their designee approval.

Extended learning opportunities must comply with all federal and state statutes pertaining to student privacy and to public broadcasting of audio and video. Confidentiality of Student Record Information will be maintained throughout the process. This includes information shared between school district representatives and the extended learning instructor, information shared between the school district or instructor with students and parents and information shared between school district representatives, the extended learning instructor with others.

Unless otherwise recommended by the Superintendent and approved by the Board, under ordinary circumstances, students or their parents/guardians shall be responsible for all related expenses including tuition and textbooks.

**Legal References:**

*NH Code of Administrative Rules, Section Ed. 306.04(a)(13), Policy Development*

*NH Code of Administrative Rules, Section Ed. 306.26(f), Kindergarten-Grade 8 School Curriculum*

*NH Code of Administrative Rules, Section Ed. 306.27(b)(4), High School Curriculum, Credits, Graduation Requirements, and Co-curricular Program*

1st Reading: August 8, 2007

Adopted: May 21, 2008

Amended/Re-adopted: February 15, 2012

Amended: June 18, 2014

1<sup>st</sup> Reading: October 16, 2019 (as amended)

2<sup>nd</sup> Reading: November 13, 2019 (as amended)

**ONLINE/ INTERNET-BASED EDUCATION**

The Hollis Brookline Cooperative School Board will allow online and internet-based credits, as a means to fulfill curriculum requirements or to promote learning. Such opportunities will be implemented only under the provisions set forth in Policy [IHBH](#), (Extended Learning Opportunities) or [IMBC](#) (Alternative Credit Options). Appeals for situations falling outside of the rules can be brought to the Academic Review Committee as referenced in the student handbook and will require Principal or ~~his/her~~ their designee permission.

If the course is to be taken for credit, then Policy [IMBC](#), Alternative Credit Options, will apply. Only students approved by the school principal shall be eligible to receive credit for online courses and internet-based courses. Where credit is not granted, such courses may be used to fulfill prerequisite requirements for advanced courses.

The written approval of the building principal or ~~his/her~~ their designee is required before a district student enrolls in an online or internet-based course that is intended to become part of their ~~his/her~~ educational program. Students applying for permission to take an online course must complete prerequisites and secure teacher/counselor signatures to confirm the student possesses the maturity level needed to function effectively in an online learning environment and to ensure appropriate course selection.

Approved credits must align with state and local standards, be delivered by staff licensed in the state from which the course originates, and contain provisions for feedback and monitoring of student progress. The district will require a syllabus, specific learning goals/activities/objectives, student evaluation criteria, and/or teacher responsibilities to be submitted for review before the course is approved as part of the student's educational program. It is the responsibility of the student to furnish this information with the application.

Students taking approved online/internet-based credits must be enrolled in the district. Students may take credits during the regular school day, with pre-approval by the principal or ~~his/her~~ their designee. Administration may grant approval for outside of school learning, based on special circumstances. A reduced day form shall accompany this request if the student falls below the 6.0 credit requirement. Online credits may be taken in the summer under the same conditions as during the school year.

Students who are permitted to take online credits during the school day may be assigned a teacher to monitor student progress, grade assignments, and supervise testing. This provision will reflect special circumstances, and require supporting documentation and principal or ~~his/her~~ their designee pre-approval.

Approved online/internet-based credits must comply with all federal and state statutes pertaining to student privacy and to public broadcasting of audio and video. Confidentiality of student record information will be maintained throughout the process. This includes information shared between school district representatives and the internet-based school or online teacher, information shared between the school district or online teacher with students and parents, and information shared between school district representatives, the online/ internet-based school or teacher with others.

The school district will provide safeguards for students participating in online/internet-based instruction activities, and Policy [JICL](#), Internet Access for Students, will apply.

Students earning credit for online/internet-based education credits shall participate in all assessments required by the statewide education improvement and assessment program.

Credit for the course is not recognized until an official transcript of the final grade has been approved by the principal or ~~his/her~~ their designee.

**Legal References:**

*NH Code of Administrative Rules, Section Ed. 306.04(a)(12), Policy Development*

*NH Code of Administrative Rules, Section Ed. 306.22, Distance Education*

*NH Code of Administrative Rules, Section Ed. 306.27(q), High School Curriculum, Credits, Graduation Requirements, and Co-curricular Program*

1st Reading: August 8, 2007

Adopted: May 21, 2008

Amended: May 15, 2012

Amended, 1<sup>st</sup> Reading: October 16, 2019

Amended, 2<sup>nd</sup> Reading; November 13, 2019

Amended, 3<sup>rd</sup> Reading: December 11, 2019

**CLASS SIZE**

It is the policy of the Hollis Brookline Cooperative School Board that class size should meet minimum and maximum standards set by the NH State Board of Education.

**Class Size**

Classes shall have a minimum of 15 students and a maximum of 25 students unless specified below.

<b>Course</b>	<b>Maximum</b>
Band	50
Choir/Chorus	50
Computer Based Courses	Number of computers in the lab
Family and Consumer Science	16
Physical Education	35
Science	24

Classes may have fewer than fifteen students if:

- The class is one specifically designed to be small, i.e., remedial classes, special education classes, etc.
- The class is designed to meet state minimum standards.
- The class is a capstone course in a series, i.e., Spanish 4 in the Spanish 1-4 program.
- The class is an AP Course.

In determining the sections, the Board and the administration will consider the needs of learners, current best practices, and the demands of the programs and standards.

Preferred maximum class size for Mathematics, Science, Language Arts, Social Studies, and Foreign Languages should be targeted at twenty students. All other maximum class sizes should be determined by the school administration, based on the appropriate number for that age group.

If the class exceeds the recommended maximum size or falls below the recommended minimum outlined in this policy, the Superintendent shall consult with the appropriate Principal and review the situation before deciding whether to take such steps as hiring additional personnel, adding/eliminating sections and/or using other resources.

This policy should be reviewed and evaluated annually by school administration.

**Legal References:**

*NH Code of Administrative Rules, Section Ed. 306.17, Class Size*

1st Reading: 9-21-2005 / Adopted 5-21-2008/Amended and Approved 4-16-2014

1st Reading of Amendment: January 21, 2015

2nd Reading of Amendment: February 18, 2015

Adopted: February 18, 2015

1<sup>st</sup> Reading of Amendment: November 13, 2019

2<sup>nd</sup> Reading: December 11, 2019

## PUPIL SAFETY AND VIOLENCE PREVENTION - Bullying

Category: Priority/Required by Law

See also [JBAA](#), [JIC](#), [JICD](#), [IHBA](#)

### **I. Definitions** (RSA [193-F:3](#))

1. **Bullying.** Bullying is hereby defined as a single significant incident or a pattern of incidents involving a written, verbal, or electronic communication, or a physical act or gesture, or any combination thereof, directed at another pupil which:

- (1) Physically harms a pupil or damages the pupil's property;
- (2) Causes emotional distress to a pupil;
- (3) Interferes with a pupil's educational opportunities;
- (4) Creates a hostile educational environment; or
- (5) Substantially disrupts the orderly operation of the school.

Bullying shall also include actions motivated by an imbalance of power based on a pupil's actual or perceived personal characteristics, behaviors, or beliefs, or motivated by the pupil's association with another person and based on the other person's characteristics, behaviors, or beliefs.

2. **Cyberbullying.** Cyberbullying is defined as any conduct defined as "bullying" in this policy that is undertaken through the use of electronic devices. For purposes of this policy, any references to the term bullying shall include cyberbullying.

3. **Electronic devices.** Electronic devices include, but are not limited to, telephones, cellular phones, computers, pagers, electronic mail, instant messaging, text messaging, and websites.

4. **School property.** School property means all real property and all physical plant and equipment used for school purposes, including public or private school buses or vans and any school sponsored activity.

Any reference in this policy to "parent" shall include parents or legal guardians.

Any reference in this policy to "Superintendent" or "Principal" shall include ~~his or her~~ **their** designee.

### **II. Statement Prohibiting Bullying or Cyberbullying of a Pupil** (RSA [193-F:4](#), II(a))

The Board is committed to providing all pupils a safe and secure school environment. This policy is intended to comply with RSA 193-F. Conduct constituting bullying and/or cyberbullying will not be tolerated and is hereby prohibited.

Further, in **accordance** with RSA 193-F:4, the District reserves the right to address bullying and, if necessary, impose discipline for bullying that:

- (1) Occurs on, or is delivered to, school property or a school-sponsored activity or event on or off school property; or
- (2) Occurs off of school property or outside of a school-sponsored activity or event, if the conduct interferes with a pupil's educational opportunities or substantially disrupts the orderly operations of the school or school-sponsored activity or event.

The Superintendent of Schools is responsible for ensuring that this policy is implemented.

### **III. Statement prohibiting retaliation or false accusations** (RSA [193-F:4](#), II(b))

#### False Reporting

A student found to have wrongfully and intentionally accused another of bullying may face discipline or other consequences, ranging from positive behavioral interventions up to and including suspension or expulsion.

A school employee found to have wrongfully and intentionally accused a student of bullying shall face discipline or other consequences to be determined in accordance with applicable law, District policies, procedures and collective bargaining agreements.

#### Reprisal or Retaliation

The District will discipline and take appropriate action against any student, teacher, administrator, volunteer, or other employee who retaliates against any person who makes a good faith report of alleged bullying or against any person who testifies, assists, or participates in a proceeding or hearing relating to such bullying.

1. The consequences and appropriate remedial action for a student, teacher, administrator, volunteer, or other employee who engages in reprisal or retaliation shall be determined by the Principal after consideration of the nature, severity and circumstances of the act, in accordance with law, Board policies and any applicable collective bargaining agreements.
2. Any student found to have engaged in reprisal or retaliation in violation of this policy shall be subject to measures up to, and including, suspension and expulsion.
3. Any teacher, administrator, volunteer, or other employee found to have engaged in reprisal or retaliation in violation of this policy shall be subject to discipline up to, and including, termination of employment.
4. Any school volunteer found to have engaged in reprisal or retaliation in violation of this policy shall be subject to measures up to, and including, exclusion from school grounds.

#### Process To Protect Pupils From Retaliation

If the alleged victim or any witness expresses to the Principal or other staff member that he/she believes he/she may be retaliated against, the Principal shall develop a process or plan to protect that student from possible retaliation.

Each process or plan may be developed on a case-by-case basis. Suggestions include, but are not limited to, re-arranging student class schedules to minimize their contact, stern warnings to alleged perpetrators, temporary removal of privileges, or other means necessary to protected against possible retaliation.

#### **IV. Protection of all Pupils** (RSA [193-F:4](#), II(c))

This policy shall apply to all pupils and school-aged persons on school district grounds and participating in school district functions, regardless of whether or not such pupil or school-aged person is a student within the District.

#### **V. Disciplinary Consequences for Violations of This Policy** (RSA [193-F:4](#), II(d))

The district reserves the right to impose disciplinary measures against any student who commits an act of bullying, falsely accuses another student of bullying, or who retaliates against any student or witness who provides information about an act of bullying.

In addition to imposing discipline under such circumstances, the board encourages the administration and school district staff to seek alternatives to traditional discipline, including but not limited to early intervention measures, alternative dispute resolution, conflict resolution and other similar measures.

#### **VI. Distribution and Notice of This Policy** (RSA [193-F:4](#), II(e))

##### Staff and Volunteers

All staff will be provided with a copy of this policy annually. The Superintendent may determine the method of providing the policy (employee handbook, hard copy, electronically, etc.)

The Superintendent will ensure that all school employees and volunteers receive annual training on bullying and related district's policies.

### Students

All students will be provided with a copy of this policy annually. The Superintendent may determine the method of providing the policy (student handbook, mailing, hard copy, electronically etc.)

Students will participate in an annual education program which sets out expectations for student behavior and emphasizes an understanding of harassment, intimidation, and bullying of students, the District's prohibition of such conduct and the reasons why the conduct is destructive, unacceptable, and will lead to discipline. Students shall also be informed of the consequences of bullying conduct toward their peers.

The Superintendent, in consultation with staff, may incorporate student anti-bullying training and education into the district's curriculum, but shall not be required to do so.

### Parents

All parents will be provided with a copy of this policy annually. The Superintendent may determine the method of providing the policy (parent handbook, mailing, hard copy, electronically, etc.). Parents will be informed of the program process and the means for students to report bullying acts toward them or other students. They will also be told that to help prevent bullying at school they should encourage their children to:

1. Report bullying when it occurs;
2. Take advantage of opportunities to talk to their children about bullying;
3. Inform the school immediately if they think their child is being bullied or is bullying other students;
4. Cooperate fully with school personnel in identifying and resolving incidents.

### Additional Notice and School District Programs

The Board may, from time to time, host or schedule public forums in which it will address the anti-bullying policy, discuss bullying in the schools, and consult with a variety of individuals including teachers, administrators, guidance counselors, school psychologists and other interested persons.

## **VII. Procedure for Reporting Bullying** (RSA [193-F:4](#), II(f))

At each school, the Principal shall be responsible for receiving complaints of alleged violations of this policy.

### Student Reporting

1. Any student who believes he or she has been the victim of bullying should report the alleged acts immediately to the Principal or if the student is more comfortable reporting the alleged act to a person other than the Principal, the student may tell any school district employee or volunteer about the alleged bullying.
2. Any school employee or volunteers who witnesses, receives a report of, or has knowledge or belief that bullying may have occurred shall inform the Principal as soon as possible, but no later than the end of that school day.
3. The Principal may develop a system or method for receiving anonymous reports of bullying. Although students, parents, volunteers and visitors may report anonymously, formal disciplinary action may not be based solely on an anonymous report. Independent verification of the anonymous report shall be necessary in order for any disciplinary action to be applied.
4. The administration may develop student reporting forms to assist students and staff in filing such reports. An investigation shall still proceed even if a student is reluctant to fill out the designated form and chooses not to do so.
5. Upon receipt of a report of bullying, the Principal shall commence an investigation consistent with the provisions of Section XI of this policy.

## Staff Reporting

1. An important duty of the staff is to report acts or behavior that they witness that appears to constitute bullying.
2. All district employees and volunteers shall encourage students to tell them about acts that may constitute bullying.
3. Any school employee or volunteer who witnesses, receives a report of, or has knowledge or belief that bullying may have occurred shall inform the Principal as soon as possible **and within 48 hours**, ~~but no later than the end of that school day.~~
4. Upon receipt of a report of bullying, the Principal shall commence an investigation consistent with the provisions of Section XI of this policy.

## **VIII. Procedure for Internal Reporting Requirements** (RSA [193-F:4](#), II(g))

In order to satisfy the reporting requirements of RSA 193-F:6, the Principal ~~or designee~~ shall be responsible for completing all New Hampshire Department of Education forms and reporting documents of substantiated incidents of bullying. Said forms shall be completed within 10 school days of any substantiated incident. Upon completion of such forms, the Principal shall retain a copy for him or herself and shall forward one copy to the Superintendent and may forward one copy to the local authority. The Superintendent shall maintain said forms in a safe and secure location.

## **IX. Notifying Parents of Alleged Bullying** (RSA [193-F:4](#), II(h))

The Principal shall report to the parents of a student who has been reported as a victim of bullying and to the parents of a student who has been reported as a perpetrator of bullying within 48 hours of receiving the report. Such notification may be made by telephone, writing or personal conference. The date, time, method, and location (if applicable) of such notification and communication shall be noted in the report. All notifications shall be consistent with the student privacy rights under the applicable provisions of the Family Educational Rights and Privacy Act of 1974 (FERPA).

## **X. Waiver of Notification Requirement** (RSA [193-F:4](#), II(i))

The Superintendent may, within a 48 hour time period, grant the Principal a waiver from the requirement that the parents of the alleged victim and the alleged perpetrator be notified of the filing of a report. A waiver may only be granted if the Superintendent deems such a waiver to be in the best interest of the victim or perpetrator. Any waiver granted shall be in writing.

## **XI. Investigative Procedures** (RSA [193-F:4](#), II(j))

1. Upon receipt of a report of bullying, the Principal shall, within 5 school days, initiate an investigation into the alleged act. If the Principal is directly and personally involved with a complaint or is closely related to a party to the complaint, then the Superintendent shall direct another district employee to conduct the investigation.
2. The investigation may include documented interviews with the alleged victim, alleged perpetrator and any witnesses. All interviews shall be conducted consistent with the developmental needs of the students in mind and shall be confidential.
3. If the alleged bullying was in whole or in part cyberbullying, the Principal may ask students and/or parents to provide the District with printed **or electronic** copies of e-mails, text messages, website pages, or other similar electronic communications.
4. Consistent with applicable law, the District will not require or request that a student disclose or provide to the District the student's user name, password, or other authenticating information to a student's personal social media account. However, the District may request to a student or a student's parent/guardian that the

student voluntarily shared printed or electronic copies of specific information from a student's personal social media account if such information is relevant to an ongoing District investigation.

4. A maximum of 10 school days shall be the limit for the initial filing of incidents and completion of the investigative procedural steps.
5. Factors the Principal or other investigator may consider during the course of the investigation, including but not limited to:
  - Description of incident, including the nature of the behavior;
  - How often the conduct occurred;
  - Whether there were past incidents or past continuing patterns of behavior;
  - The characteristics of parties involved, (name, grade, age, etc.);
  - The identity and number of individuals who participated in bullying behavior;
  - Where the alleged incident(s) occurred;
  - Whether the conduct adversely affected the student's education or educational environment;
  - Whether the alleged victim felt or perceived an imbalance of power as a result of the reported incident; and
  - The date, time and method in which parents or legal guardians of all parties involved were contacted.
6. The Principal shall complete the investigation within 10 school days of receiving the initial report. If the Principal needs more than 10 school days to complete the investigation, the Superintendent may grant an extension of up to 7 school days. In the event such extension is granted, the Principal shall notify in writing all parties involved of the granting of the extension.
7. A determination of whether a particular action of or incident constitutes a violation of this policy shall be require a determination based on all facts and surrounding circumstances and shall include recommended remedial steps necessary to stop the bullying and be documented within a written final report to by the Principal.
8. Students who are found to have violated this policy may face discipline in accordance with other applicable board policies, up to and including suspension. Students facing discipline will be afforded all due process required by law.

## **XII. Response to Remediate Substantiated Instances of Bullying** (RSA [193-F:4](#), II(k))

Consequences and appropriate remedial actions for a student or staff member who commits one or more acts of bullying or retaliation may range from positive behavioral interventions up to and including suspension or expulsion of students and dismissal from employment for staff members.

Consequences for a student who commits an act of bullying or retaliation shall be varied and graded according to the nature of the behavior, the developmental age of the student, and the student's history of problem behaviors and performance. Remedial measures shall be designed to correct the problem behavior, prevent another occurrence of the problem, protect and provide support for the victim, and take corrective action for documented systematic problems related to bullying.

Examples of consequences may include, but are not limited to:

- Admonishment
- Temporary removal from classroom
- Deprivation of privileges

- Classroom or administrative detention
- Referral to disciplinarian
- In-school suspension
- Out-of-school suspension
- Expulsion

Examples of remedial measures may include, but are not limited to:

- Restitution
- Mediation
- Peer support group
- Corrective instruction or other relevant learning experience
- Behavior assessment
- Student counseling
- Parent conferences

In support of this policy, the Board promotes preventative educational measures to create greater awareness of aggressive behavior, including bullying. The Board encourages the Superintendent to work collaboratively with all staff members to develop responses other than traditional discipline as a way to remediate substantiated instances of bullying.

### **XIII. Reporting of Substantiated Incidents to the Superintendent** (RSA [193-F:4](#), II(1))

The Principal shall forward all substantiated reports of bullying to the Superintendent upon completion of the Principal's investigation.

### **XIV. Communication with Parents upon Completion of Investigation** (RSA [193-F:4](#), II(m))

1. Within two school days of completing an investigation, the Principal will notify the students involved in person of his/her findings and the result of the investigation.
2. The Principal will notify via telephone the parents of the alleged victim and alleged perpetrator of the results of the investigation. The Principal will also ~~sent~~ send a letter to the parents within 24 hours again notifying them of the results of the investigation.
3. If the parents request, the Principal shall schedule a meeting with them to further explain his/her findings and reasons for his/her actions.
4. In accordance with the Family Educational Rights and Privacy Act and other law concerning student privacy, the District will not disclose educational records of students including the discipline and remedial action assigned to those students ~~and~~ to the parents of other students involved in a bullying incident.

### **XV. Appeal**

1. For non-disciplinary remedial actions where no other review procedures govern, the parents of the pupils involved in the bullying shall have the right to appeal the Principal's decision to the Superintendent in writing within ~~five (5) school~~ ten (10) calendar days. Upon receipt of the appeal, the Superintendent shall review the Principal's decision and issue a written decision within ten (10) school days. If the aggrieved party is still not satisfied with the outcome, the aggrieved party may file a written request for review by the School Board within ten (10) ~~school~~ calendar days of the Superintendent's decision. The School Board will adhere to all applicable New Hampshire Department of Education administrative rules.

An aggrieved parent/guardian has the right to appeal the final decision of the local School Board to the State Board within thirty (30) calendar days of receipt of the written decision of the local School Board in accordance with RSA 541-A and State of New Hampshire Department of Education Regulations set forth in ED 200. The State Board may waive the thirty-day requirement for good cause shown, including, but not limited to, illness, accident, or death of a family member.

2. The procedures under RSA [193](#):13, Ed 317, and District policies establish the due process and appeal rights for students disciplined for acts of bullying.

3. The School Board or its designee will inform parents of any appeal rights they may have to the New Hampshire State Board of Education.

#### **XVI. School Officials** (RSA [193-F](#):4, II(n))

The Superintendent of schools is responsible for ensuring that this policy is implemented. In order to facilitate the implementation of this policy, the Superintendent may establish further administrative rules or regulations.

#### **XVII. Capture of Audio Recordings on School Buses**

Pursuant to RSA 570-A:2, notice is hereby given that the Board authorizes audio recordings to be made in conjunction with video recordings of the interior of school buses while students are being transported to and from school or school activities. The Superintendent shall ensure that there is a sign informing the occupants of school buses that such recordings are occurring.

#### **XIII. Use of Video or Audio Recordings in Student Discipline Matters**

The District reserves the right to use audio and/or video recording devices on District property (including school buses) to ensure the health, safety and welfare of all staff, students and visitors. Placement and location of such devices will be established in accordance with the provisions of Policies EEAA, EEAE and ECAF.

In the event an audio or video recording is used as part of a student discipline proceeding, such video may become part of a student's education record. If an audio or video recording does become part of a student's education record, the provisions of Policy JRA shall apply.

The Superintendent is authorized to contact the District's attorney for a full legal opinion relative in the event of such an occurrence.

#### **Legal References:**

*RSA [187:70](#), Educational Institution Policies on Social Media*

*RSA [193-F](#):3, Pupil Safety and Violence Prevention Act*

*RSA [570-A](#):2, Capture of Audio Recordings on School Buses Allowed*

*NH Code of Administrative Rules, Section Ed 306.04(a)(8), Student Harassment*

1st Reading: September 15, 2010

2nd Reading: November 17, 2010

Adopted: November 17, 2010

1<sup>st</sup> Reading: November 13, 2019