

Weekly Newsletter: April 22nd-26th

Teenager Post # 398

In your bed, it's 6AM, you close your eyes for 5 minutes, it's 7:45. At school, it's 1:30, you close your eyes for 5 minutes, it's 1:30.

//teenagerposts.tumblr.com



Who is Skylar Barella?

Skylar Barella, 8th grader, competes in track with many events such as; 1600 meter, 800 meter, high jump, triple jump, and 4x4 relay! She has been very successful with many wins in all of these categories! Skylar tells us that even though she is gone sometimes during class she still strives to try and have good grades. Her inspiration at track meets are to make her dad proud! To keep her mind cleared when she is competing she thinks about other things and thinks about God and leans on him for confidence and strength at her meets. Skylar says that new members that want to try out for track to not quit and keep working hard but to also remember that what you don't see now will help you later in life!

Lunch Schedule

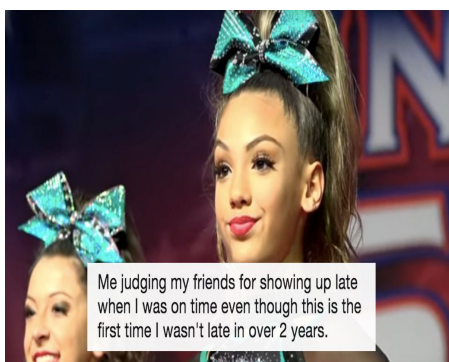
Monday- Chicken Tender and Roll, Pepperoni Pizza, PBJ box, Green Beans, Corn Nuggets, Salad, Fresh Fruit, Milk choice

Tuesday- Bacon Cheeseburger, Cheese Pizza, PBJ box, Onion Rings, Fuitable, Fresh Fruit, Milk Choice

Wednesday- BBQ Sandwich, Pepperoni Pizza, PBJ Box, Potato smiles, Baked Beans, Fuitable Frozen Fruit Cup, Milk Choice

Thursday- Chili Cheese Fries, Cheese Pizza, PBJ Box, Juice Box, Fresh Carrots and Tomatoes, Broccoli, Tropical Fruit, Milk Choice

Friday- Popcorn Chicken and Garlic Toast, Pepperoni Pizza, PBJ Box, Creamed Potatoes, Black Eyed Peas, Salad, Fresh Fruit, Milk Choice



TEENAGER

noun 1. Someone who is ready for the zombie apocalypse but not ready for the math test tomorrow.

Upcoming Events

- Tennis region this week
- 9th grade football practice (April 29th)
- Baseball championship is this week
- Avengers: Endgame is out in theatres the 26th

We want to congratulate Dr. Freeman and Shelly Tanner for being approved as WLMS instructional coaches for 2019-2020! We are so happy and excited for these two!