



---

# Park Hill School District

Building Successful Futures • Each Student • Every Day

## REQUEST FOR PROPOSAL

---

### 2023 Fence Projects

- **Chinn Elementary**
- **Hawthorn Elementary**
- **Southeast Elementary**
- **Union Chapel Elementary**
- **Walden Middle School**

Detailed Proposal Information is Available on District Website

[www.parkhill.k12.mo.us](http://www.parkhill.k12.mo.us)

Bid Closing Date: April 26th, 2023

Bid Closing Time: 10:00 AM CST

*Park Hill School District reserves the right to reject any or all proposals and to waive informalities or irregularities in any proposal.*

Dear Contractor:

The Park Hill School District is seeking proposals from qualified contractors to complete the Fencing projects throughout the District.

**A mandatory “pre-bid” meeting** and walk through will start at Union Chapel Elementary School we will meet on **April 12, 2023 at 10:00am CST** by the front entrance. We will then continue to the other 4 locations. If you have any questions, please contact Joe Hagg at 816-359-6967.

Sealed proposals will be accepted at the Support Services office located at 9501 N. Seymour, Kansas City, MO 64153 on April 26, 2023 at 10:00 AM CST. Proposals will be opened at that time.

Proposals must be returned on the form(s) provided, with “Bid Proposal – 2023 Fence Projects” clearly on the label. A proposal must consist of all pages of the proposal request including the signature page signed by an authorized representative of the firm. Non- conformance with these instructions may be grounds for rejection of proposal.

A bid shall be accompanied by a certified check, cashier’s check or surety bond for ten percent of the amount of the bid included in the proposal as a guarantee that the contractor will enter into a contract to perform the proposal pursuant to the plans and specifications.

The District reserves the right to reject any and all proposals and to waive informalities.

Faxed or e-mailed proposals will not be accepted. Late proposals will be rejected, unopened and returned.

**Work must be complete by August 7, 2023.** Summer school is scheduled June 5 to July 1 at some schools. **Must coordinate with the district for scheduling.** Any work not completed by August 7, 2023 shall result in a \$1,000 per diem penalty to be deducted by the District from final payment.

Prevailing Wages will apply. Current Missouri Division of Labor Standards, Wage and Hour Section, Annual Wage Order No. 27, Section 083, Platte County, or most current version will apply.

The project is tax exempt.

Contractor is responsible for any and all required permits.



Jim Rich  
Director of Operations

## Project Schedule

- April 3, 2023** RFP published to Park Hill School District website
  - April 12, 2023** Mandatory Pre-Bid Meeting at Union Chapel Elementary at 10:00am
  - April 26, 2023** Sealed bids due By 10:00am to 9501 N. Seymour Ave, Kansas City, MO 64153
  - May 11, 2023** Park Hill School District Board of Education: First Read- Bids, Contracts, Agreements
  - May 25, 2023** Park Hill School District Board of Education: Second Read and Vote
  - May 26, 2023** Park Hill Building and Grounds Department will contact board approved contractor(s) to proceed with project
  - July 1, 2023** Approximate start date
  - August 7, 2023** Work Completion date
-

## SECTION 323100 – FENCES AND GATES

### PART 1 - GENERAL

#### 1.1 SUMMARY

- A. Provide chain link fencing and gates for site perimeter and areas requiring separation.

#### 1.2 SUBMITTALS

- A. Product Data: Submit manufacturer's product data and installation instructions for each material and product used.

#### 1.3 QUALITY ASSURANCE

- A. Comply with governing codes and regulations. Provide products of acceptable manufacturers which have been in satisfactory use in similar service for three years. Use experienced installers. Deliver, handle, and store materials in accordance with manufacturer's instructions.

### PART 2 - PRODUCTS

#### 2.1 MATERIALS

##### A. Steel Chain-Link Fence Fabric:

1. Mesh and Wire Size: 2 inch mesh, 0.148 inch diameter (9 gage), knuckle/twist selvage and 8 ga finish (if noted on contract documents).
2. Coating:
  - a. ASTM A 817, Type 2, Class 2, zinc-coated (galvanized).
  - b. ASTM 668 Class B, Polyester Powder Coated, color Black (if noted on contract documents)

##### B. Framework:

1. Acceptable Types:
    - a. ASTM F1083, galvanized round steel pipe, standard weight (schedule 40), hot dip galvanized with not less than 1.8 oz./sq. ft.
    - b. Cold rolled electric-welded pipe in accordance with ASTM F1043 group 1C, high yield (50,000 psi minimum), galvanized round steel pipe, standard weight (schedule 40), hot dip galvanized with not less than 1.8 oz./sq. ft. or polyester powder coated finish, color black (ASTM F934) as noted on contract documents.
  2. Line Posts: 2.375 inches diameter O.D..
  3. End, Corner and Pull posts: 2.875 inches diameter O.D.
  4. Gate Posts (for nominal width of gate leaf):
    - a. Up to 6 feet – 2.875 inches diameter O.D.
    - b. 6 to 13 feet – 4.000 inches diameter O.D.
    - c. 13 to 18 feet – 6.625 inches diameter O.D.
    - d. Over 18 feet – 8.625 inches diameter O.D.
  5. Top Rail: 1.66 inches diameter O.D.; not less than 18 feet lengths; with expansion type couplings not less than 6 inches long; provided with means for securely attaching top rail to each end, corner, pull and gate post.
  6. Brace Rail: 1.66 diameter O.D.; trussed to line posts with 3/8 inch diameter rod and adjustable tightener.
  7. Gate Frame: 1.90 inches diameter O.D. horizontal and vertical members provided to ensure proper gate operation and for attachment of fabric and hardware; members spaced not more than 8 feet apart, rigidly assembled by welding or with special fittings; and members extended and fitted with clips or other means for attaching 3 rows of barbed wire; provide with 3/8 inch diameter adjustable length truss rods.
- C. Post Tops: Furnished with opening to permit passage of top rail; hot dip galvanized steel (with coating to match framework if noted on plans).
- D. Couplings, Bands, Clips, Wire Ties, Tension Bars, Fasteners and Fittings: Hot dip galvanized steel (with coating to match fabric if noted on plans).
- E. Bottom Rail: 1.66 inches diameter O.D.; not less than 18 feet lengths; with expansion type couplings not less than 6 inches long; provided with means for securely attaching top rail to each end, corner, pull and gate post.
- F. Gate Hardware: Hot dip galvanized steel, sized to ensure proper gate operation.

1. Hinges: Non-lift-off type, offset to permit 180 degree gate opening; 3 hinges per gate leaf.
  2. Latches: Plunger - bar type, except that forked type may be provided for personnel gates; with locking device and padlock eyes as integral part of latch.
  3. Keepers: Mechanical device which automatically engages gate leaf and holds it in open position until manually released; provided at vehicle gates.
  4. Stops: Gate stop pipe to engage center drop rod; provided at double gates.
- G. Concrete: Minimum 4,000 PSI Mix, 3ft minimum depth with pipe in ground

## PART 3 - EXECUTION

### 3.1 INSTALLATION

- A. Install materials in accordance with manufacturer's instructions and approved submittals. Comply with ASTM F 567. Install materials in proper relation with adjacent construction and with uniform appearance. Coordinate with work of other sections. Install posts to depth to avoid frost heave.
- B. Cut pipe with pipe-cutters only. Cutting with backsaws is not acceptable. Tack weld gates for strength. Use spring loaded latches, not yokes.
- C. Restore or replace damaged components. Clean and protect work from damage.

**Package 1**

**Walden Middle School**

4701 NW. 56<sup>th</sup> St. Kansas City, MO 64151

- Install approximately **291 linear ft** of Polyester Powder Coated Black 6' chain link fence
- Concrete post minimum of 3ft deep
- Install 2- 12 ft gates
- Clean up spoils and haul away

**Southeast Elementary School**

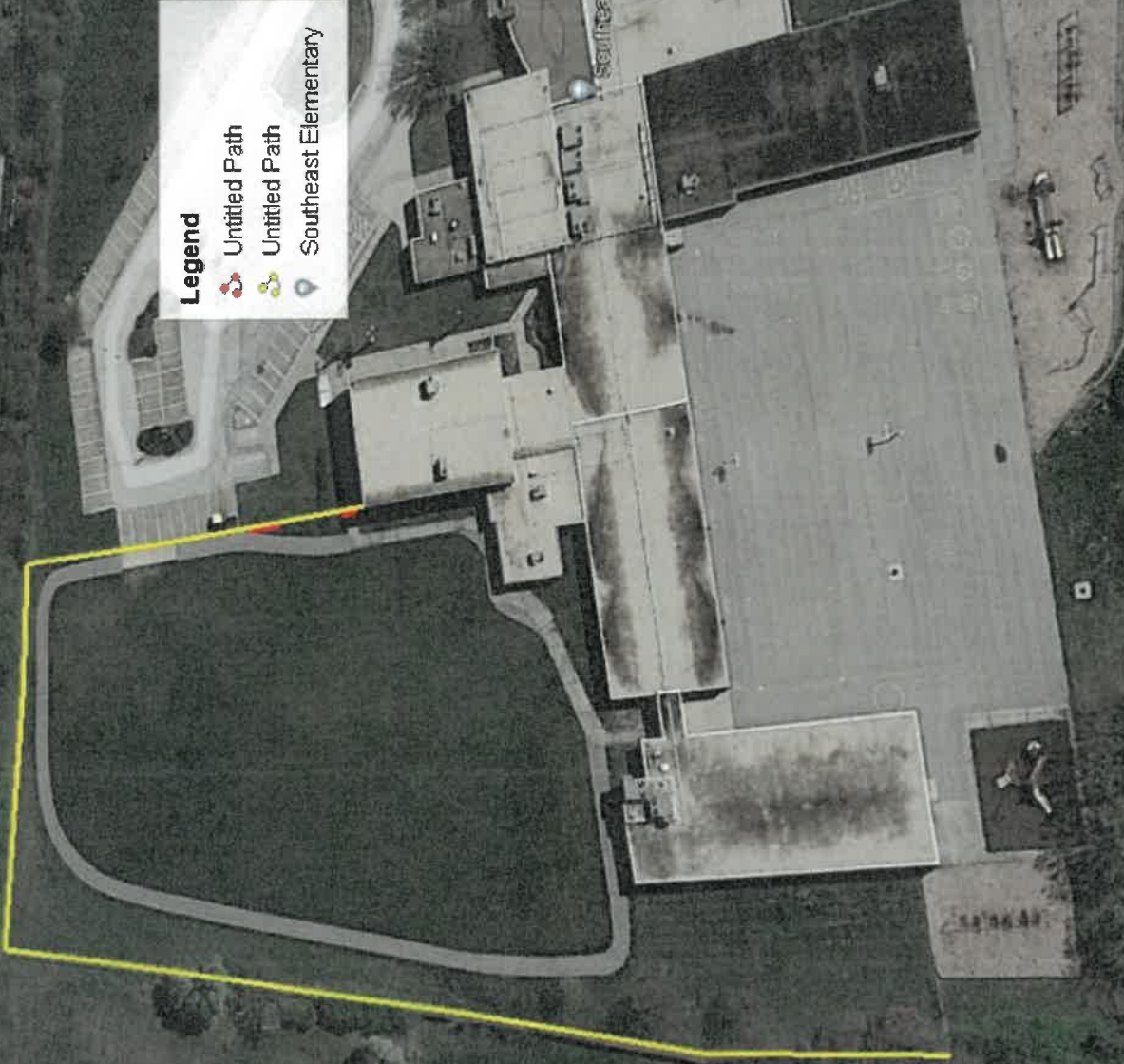
5704 NW. Northwood Kansas City, MO 64151

- Install approximately **897 linear ft** of Polyester Powder Coated Black 6' chain link fence
- Concrete post minimum of 3ft deep
- Install 1 – 16 ft gate
- Install 1 -48" walking gate
- Clean up spoils and haul away

**Legend**

- 📍 Walden Middle School
- 📍 Untitled Path
- 📍 Untitled Path





**Legend**

-  Untitled Path
-  Untitled Path
-  Southeast Elementary



**Package 2**

**Chinn Elementary**

7100 NW Chatham Rd. Kansas City, MO 64151

- Install approximately **535 linear ft** of Polyester Powder Coated Black 6' chain link fence
- Concrete post minimum of 3ft deep
- Install 1- 48" walking gate
- Clean up spoils and haul away

**Union Chapel Elementary**




7100 NW Hampton Rd. Kansas City, MO 64152

- Install approximately **1,051 linear ft** of Polyester Powder Coated Black 6' chain link fence
- Concrete post minimum of 3ft deep
- Install 2- 12ft gates
- Clean up spoils and haul away

## Untitled Map

Write a description for your map.

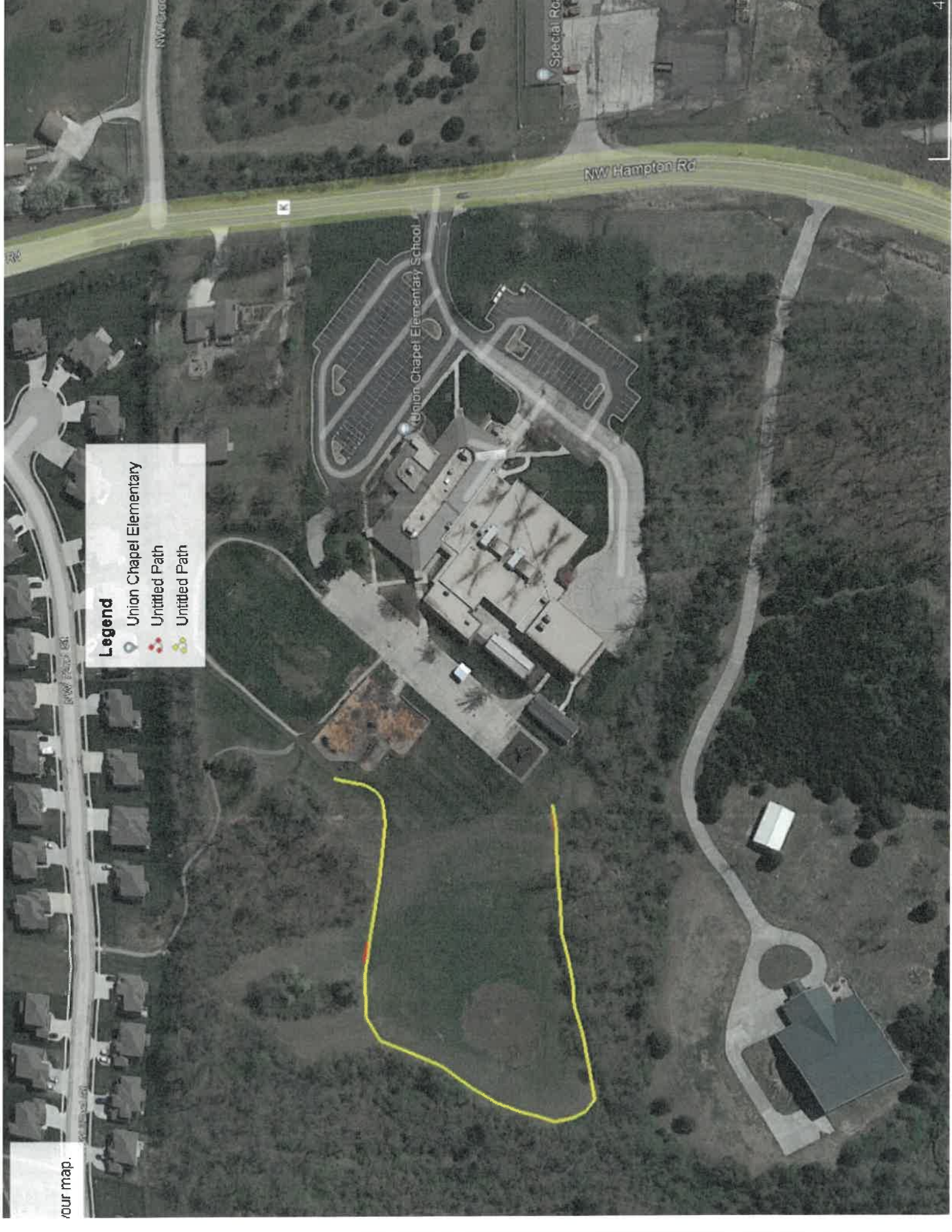
### Legend

-  Chinn Elementary
-  Untitled Path
-  Untitled Path






Google Earth

© 2023 Maxar Technologies



**Legend**

-  Union Chapel Elementary
-  Untitled Path
-  Untitled Path

our map.

**Package 3**

**Hawthorn Elementary**

8200 N. Chariton Kansas City, MO 64152

- Install approximately **1,951 linear ft** of Polyester Powder Coated Black 6' chain link fence
- Concrete post minimum of 3ft deep
- Install 1- 12ft gates
- Clean up spoils and haul away

our map.



# Bid Form-2023 Fence Projects

## Package 1

Walden Middle School	\$
Southeast Elementary	\$
<b>Total</b>	<b>\$</b>

**This work is to be completed no later than August 7, 2023.**

All work not completed by August 7, 2023 shall result in a \$1,000 per diem penalty to be deducted by the District from the final payment.

Prices as bid on this form shall include dollar amounts to cover work as specified, including labor, materials, overhead and profit.

Company: \_\_\_\_\_

Address: \_\_\_\_\_

\_\_\_\_\_

Phone: \_\_\_\_\_ Fax: \_\_\_\_\_

Email: \_\_\_\_\_

Print Name: \_\_\_\_\_

Signature: \_\_\_\_\_ Date: \_\_\_\_\_

# Bid Form-2023 Fence Projects

## Package 2

Chinn Elementary	\$
Union Chapel Elementary	\$
<b>Total</b>	<b>\$</b>

**This work is to be completed no later than August 7, 2023.**

All work not completed by August 7, 2023 shall result in a \$1,000 per diem penalty to be deducted by the District from the final payment.

Prices as bid on this form shall include dollar amounts to cover work as specified, including labor, materials, overhead and profit.

Company: \_\_\_\_\_

Address: \_\_\_\_\_

\_\_\_\_\_

Phone: \_\_\_\_\_ Fax: \_\_\_\_\_

Email: \_\_\_\_\_

Print Name: \_\_\_\_\_

Signature: \_\_\_\_\_ Date: \_\_\_\_\_

# Bid Form-2023 Fence Projects

## Package 3

Hawthorn Elementary	\$
<b>Total</b>	\$

**This work is to be completed no later than August 7, 2023.**

All work not completed by August 7, 2023 shall result in a \$1,000 per diem penalty to be deducted by the District from the final payment.

Prices as bid on this form shall include dollar amounts to cover work as specified, including labor, materials, overhead and profit.

Company: \_\_\_\_\_

Address: \_\_\_\_\_

\_\_\_\_\_

Phone: \_\_\_\_\_ Fax: \_\_\_\_\_

Email: \_\_\_\_\_

Print Name: \_\_\_\_\_

Signature: \_\_\_\_\_ Date: \_\_\_\_\_