



Northshore
School District



Northshore
School District

Capital Bond Planning Task Force Update

March 6, 2023

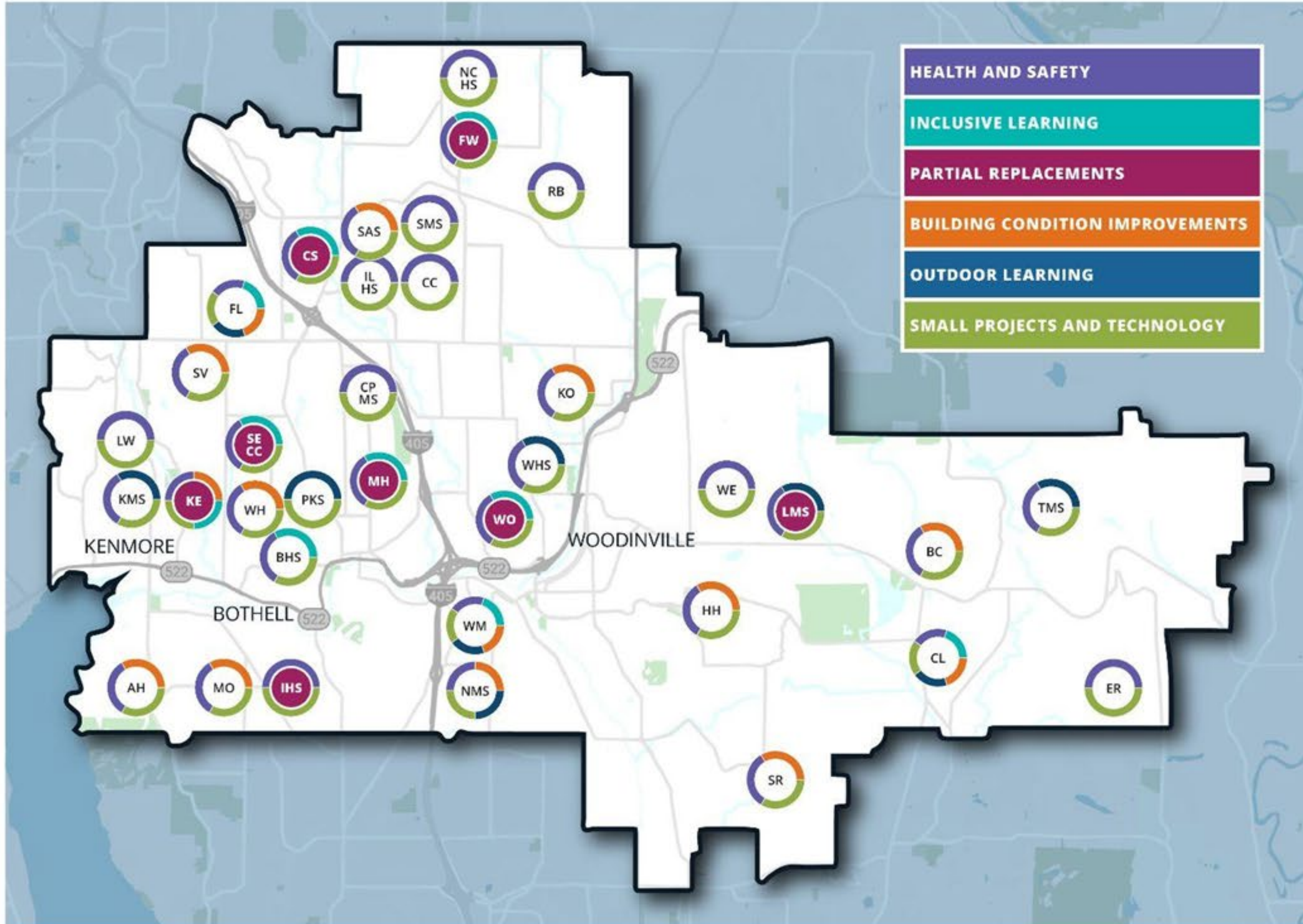


Northshore
School District



NSD Capital Projects Team

2022 Capital Bond Projects



Capital Bond Growth Projects



EXPANSIONS

Crystal Springs, Fernwood, Woodin Elementaries and Sorenson ECC

- Delivery Method: Progressive Design-Build
- PDB Team: Abbott Construction/NAC Architecture



MODERNIZATIONS/ADDITIONS

Kenmore and Maywood Hills Elementaries

- Delivery Method: Progressive Design-Build
- Team: Lease Crutcher Lewis/Mithun Architecture



MODERNIZATIONS/PHASED REPLACEMENTS

Inglemoor High School

- Delivery Method: General Contractor/Construction Manager (GC/CM)
- Hutteball + Oremus Architecture selected as design team
- GC/CM bid opening April 19



Leota Middle School

- Delivery Method: General Contractor/Construction Manager (GC/CM)
- Integrus Architecture selected as design team
- GC/CM bid opening April 19

2022

2023

2024

2025

'26

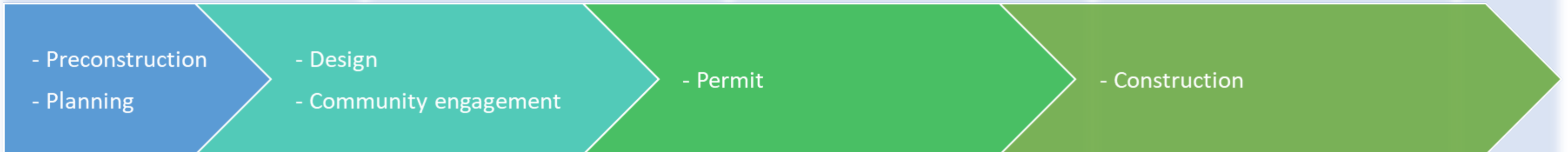
**Design Build
EXPANSIONS**
Fernwood, Crystal
Springs, Woodin,
Sorenson



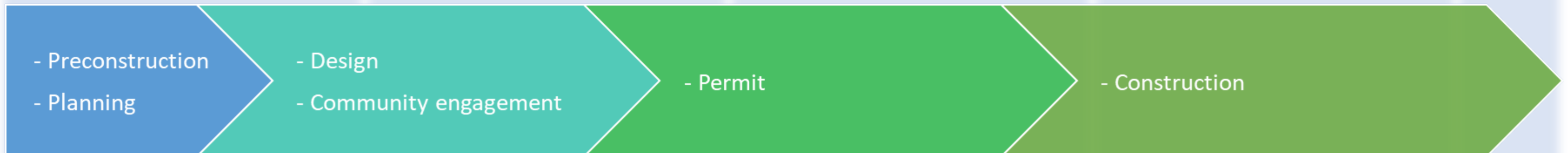
**Design Build
MODERNIZATIONS**
Kenmore Elem,
Maywood Hills



**GC/CM PHASE 1
REPLACEMENT**
Leota
Middle School



**GC/CM PHASE 1
REPLACEMENT**
Inglemoor
High School



Additional Bond Projects

Inclusive Learning

Crystal Springs

Fernwood

Kenmore Elementary

Maywood Hills

Sorenson Early Childhood Center

Woodin

Cottage Lake

Frank Love

Woodmoor

Hollywood Hill

Kokanee

Bothell HS Adult Transition



Outdoor Learning

Leota MS – Turf field installation

*Kenmore MS - Tennis court replacement
and turf field installation*

*Northshore MS - Tennis court replacement
and turf field installation*

*Timbercrest MS - Tennis court replacement
and turf field installation*

*Woodinville HS – Football & Soccer field
replacement*

Pop Keeney – Turf field replacement



Building Improvements

HVAC - \$8m

Hollywood Hill

Northshore MS

Shelton View

Roofing - \$12m

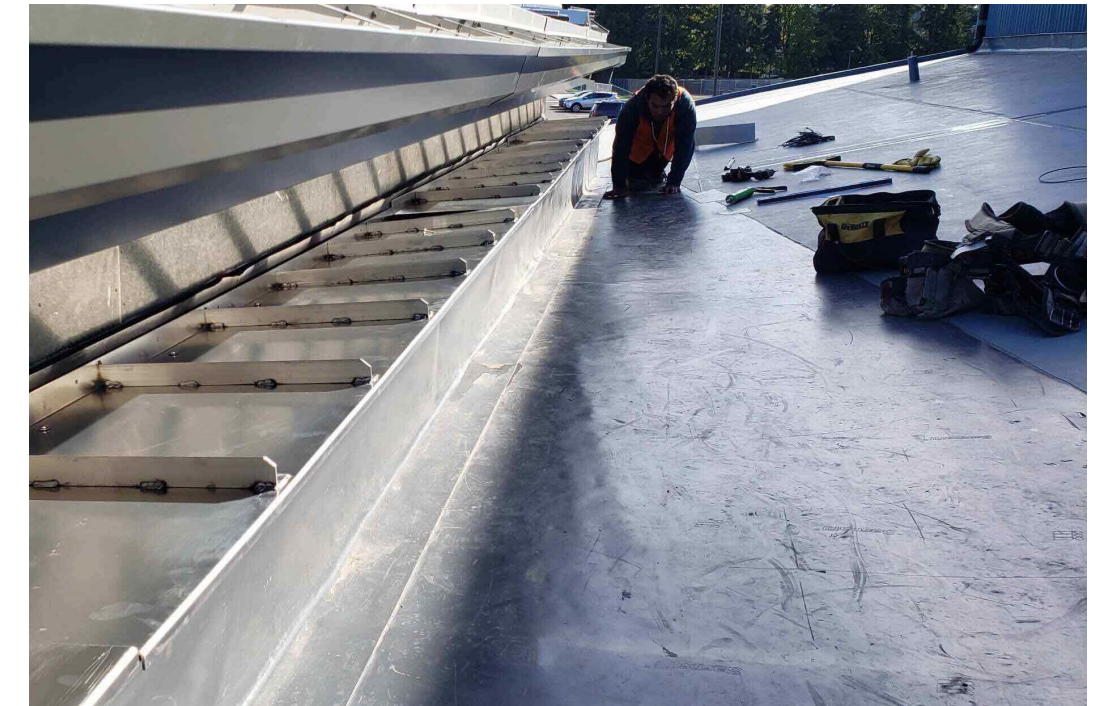
Canyon Park MS

Cottage Lake

Frank Love

Hollywood Hill

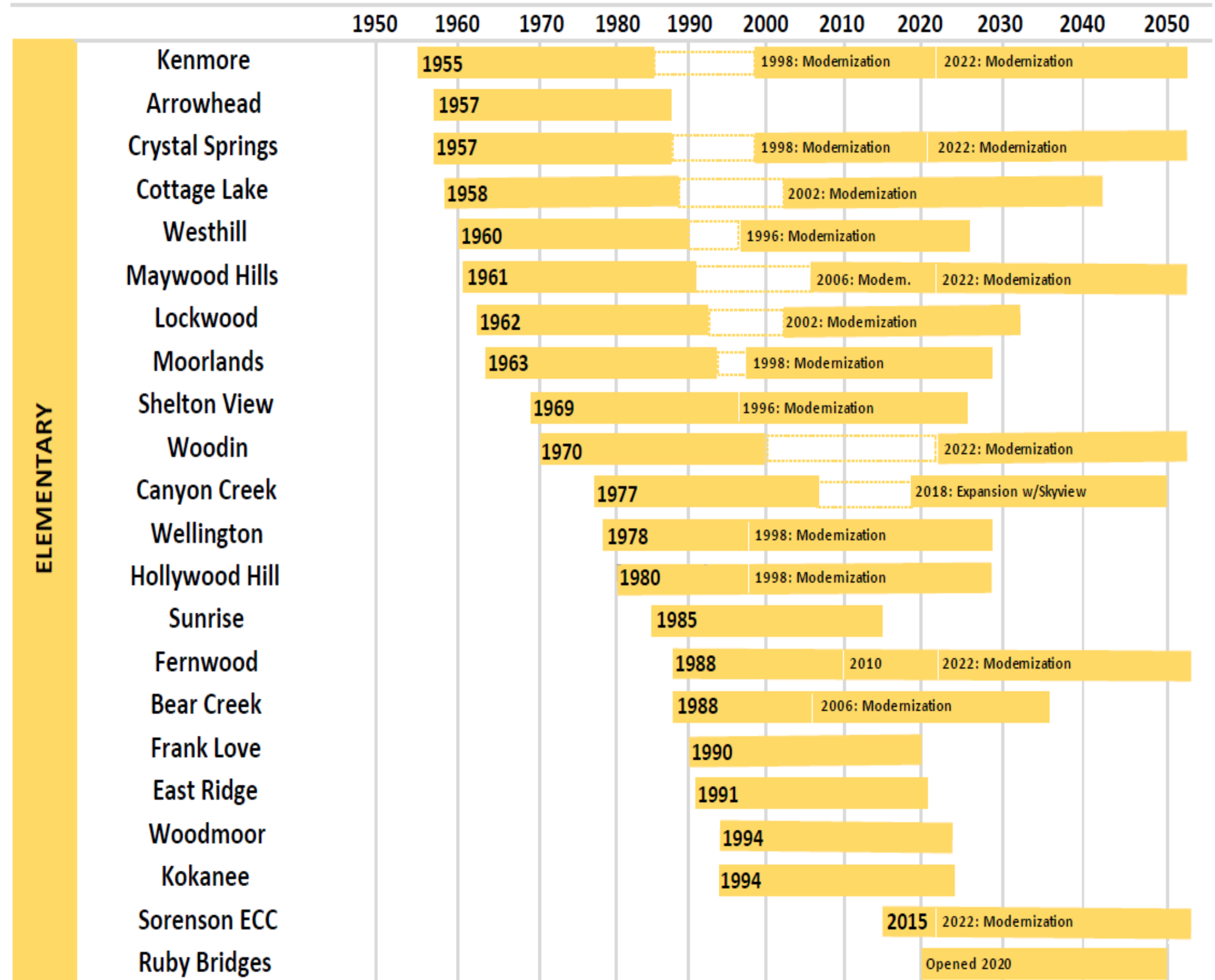
Moorlands



Historic Timeline of School Construction and Modernization

Challenge:

Balance growth and modernization while considering the OSPI recommendation of a 30-year building lifecycle

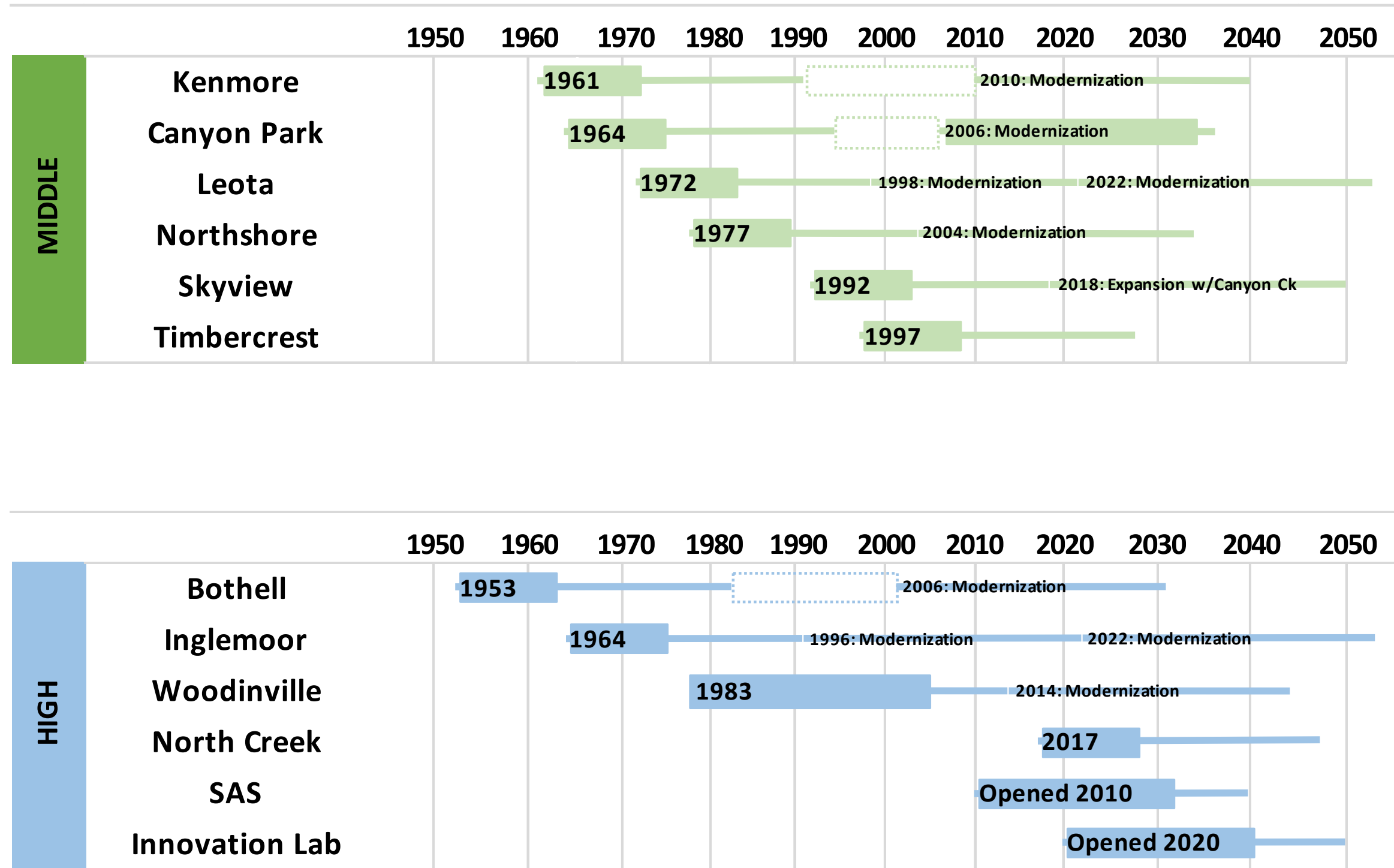


Historic Timeline of School Construction and Modernization



Goal:

Touch every building
in a 32-year time
period





Northshore
School District

Enrollment Demographics Task Force (EDTF) Update

Dawn Mark
Director of Facilities Planning & Enrollment

EDTF Duties

Board Policy 9400P: EDTF Duties



Determine appropriate enrollment balances and when an “identified area of concern” exists.



Review enrollment data, growth, & building permit applications to identify school-specific issues.



Gather input from all stakeholders, deliberate on problem, and make data supported recommendation to the Board.



Present a continuum of options: school closure, boundary adjustment, programs relocated, waivers adjusted, or new sites obtained.

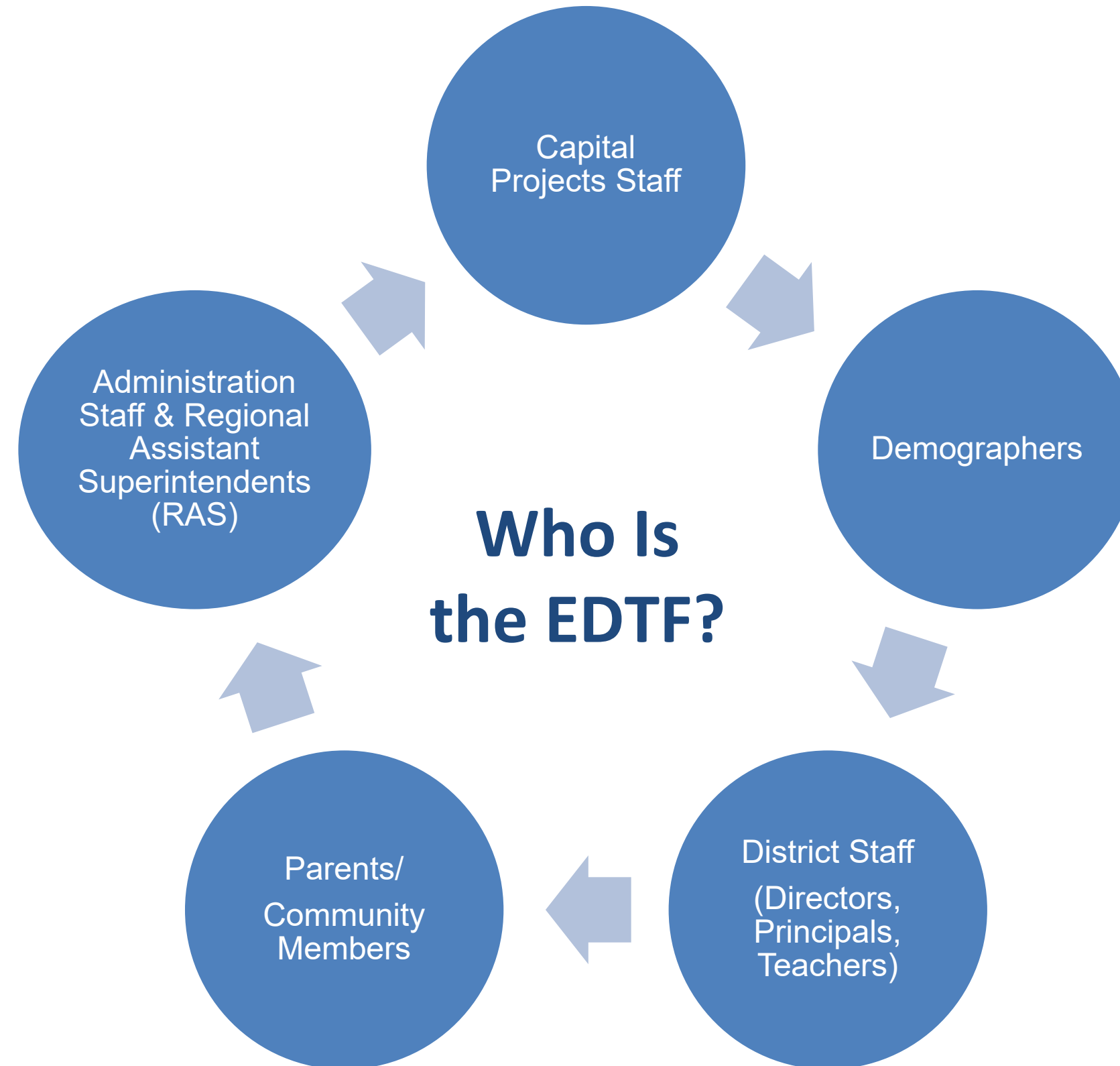


Board recommendation contains description of problem(s), all solutions discussed, rationale for final proposal, and cost & program implications.

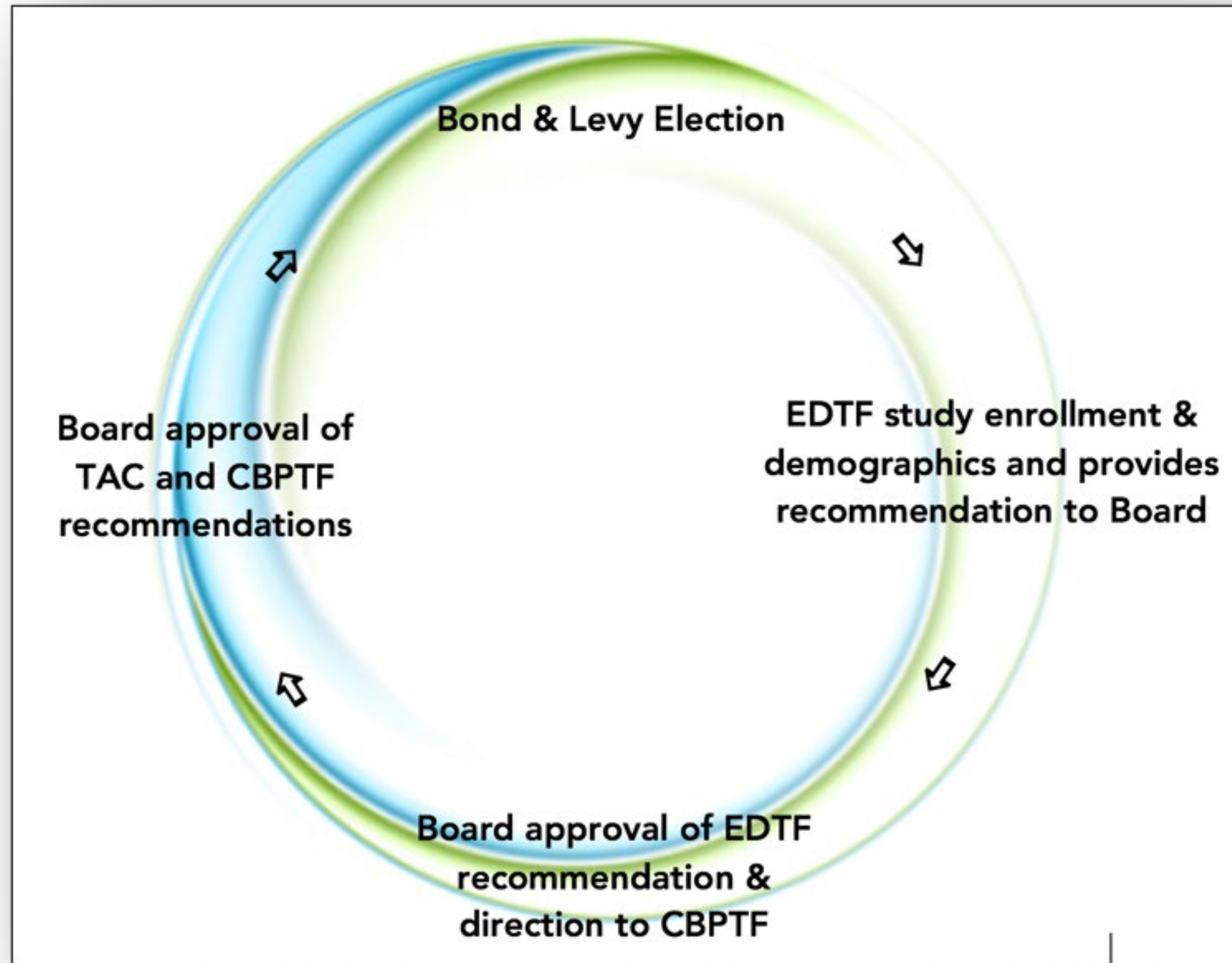


All recommendations to the Board by April 30th of the year preceding the proposed implementation.

EDTF Members



EDTF Relation to CBPTF



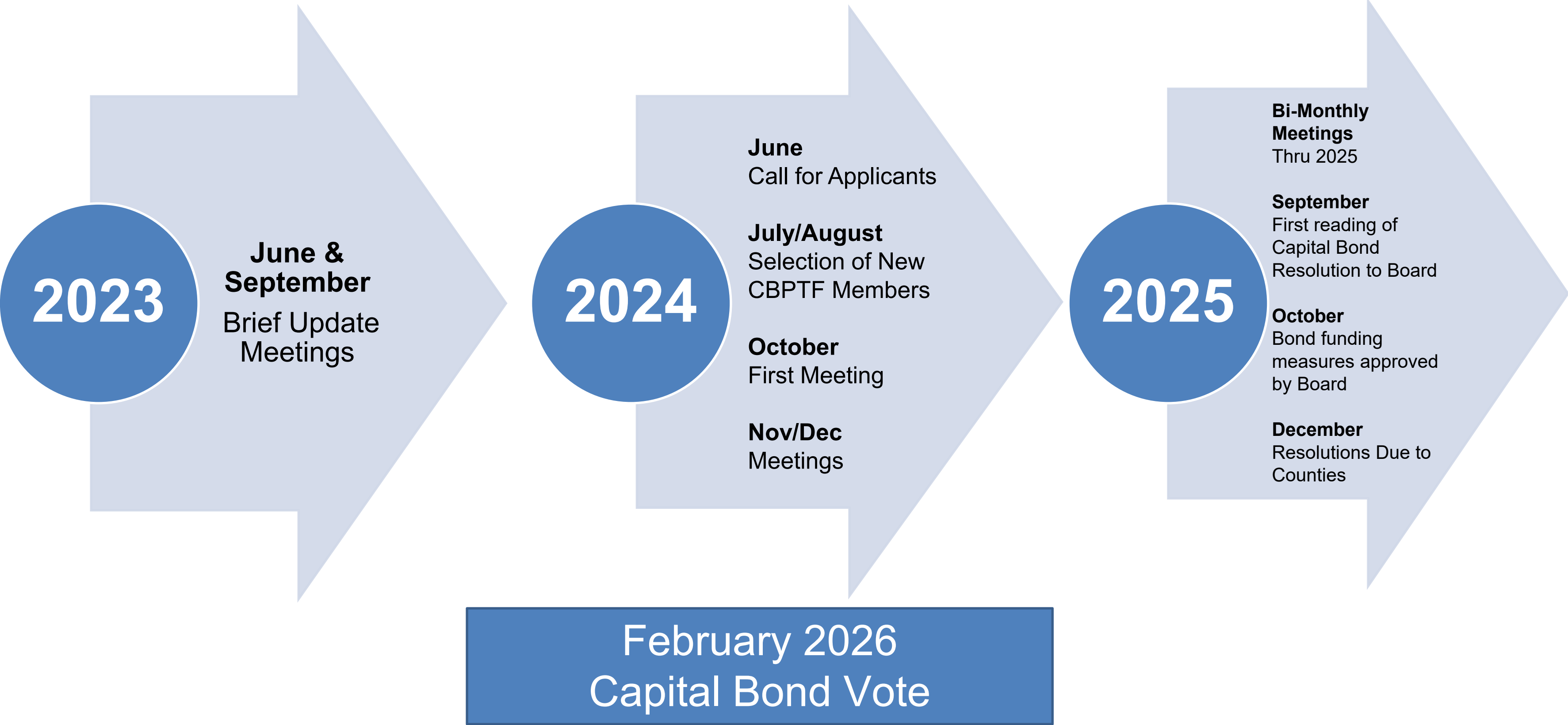
EDTF – 2022-23 Focus

Fall 2022: Short-term recommendations for high school capacity

Winter 2022-23: Capacity balancing recommendation at elementary schools

Spring 2023: Long-term recommendation for high school capacity

CBPTF Schedule Moving Forward



Questions?

Northshore School District

3330 Monte Villa Parkway Bothell, WA
98021

Phone: [425-408-6000](tel:425-408-6000)

*Strengthening Our Community Through
Excellence in Education*

Connect With Us

