

MPCSD After School Care
2023-2024 TK Program

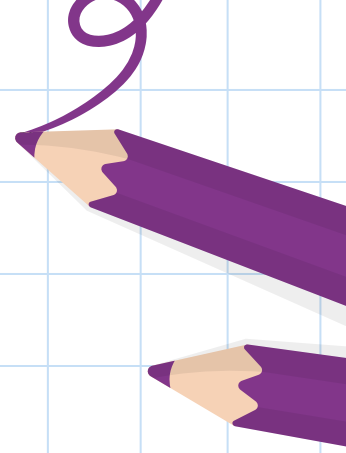
Brief Introduction

- Since 2001, we have provided After School Care and Camp Programs throughout the Bay Area, including MPCSD.
- Our mission is to offer a conscientious, fun, and affordable academic environment to help the children of our communities form a lifetime habit of successful learning.
- We strive to extend learning outside of the classroom through hands-on experiences that support a child's academic excellence, social-emotional learning, and personal growth.
- Our programs are inclusive and equitable – we serve all children and we are committed to providing each student with the tools and resources to personally succeed.
- Since 2012, we have offered a TK, 6-hour per day program to SMFCSD students



Whole Child Approach

- In creating our program, we strive to create an environment where students are healthy, safe, engaged, supported and challenged.
- We are concerned with the physical, social, emotional, and cognitive well being of our students.
- This approach creates the the foundation for a lifetime habit of successful learning.



Curriculum

1

Hands-on

2

Project Based

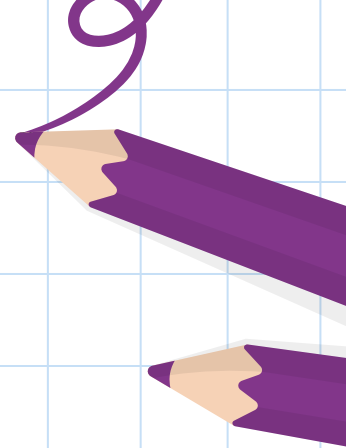
3

Student Driven

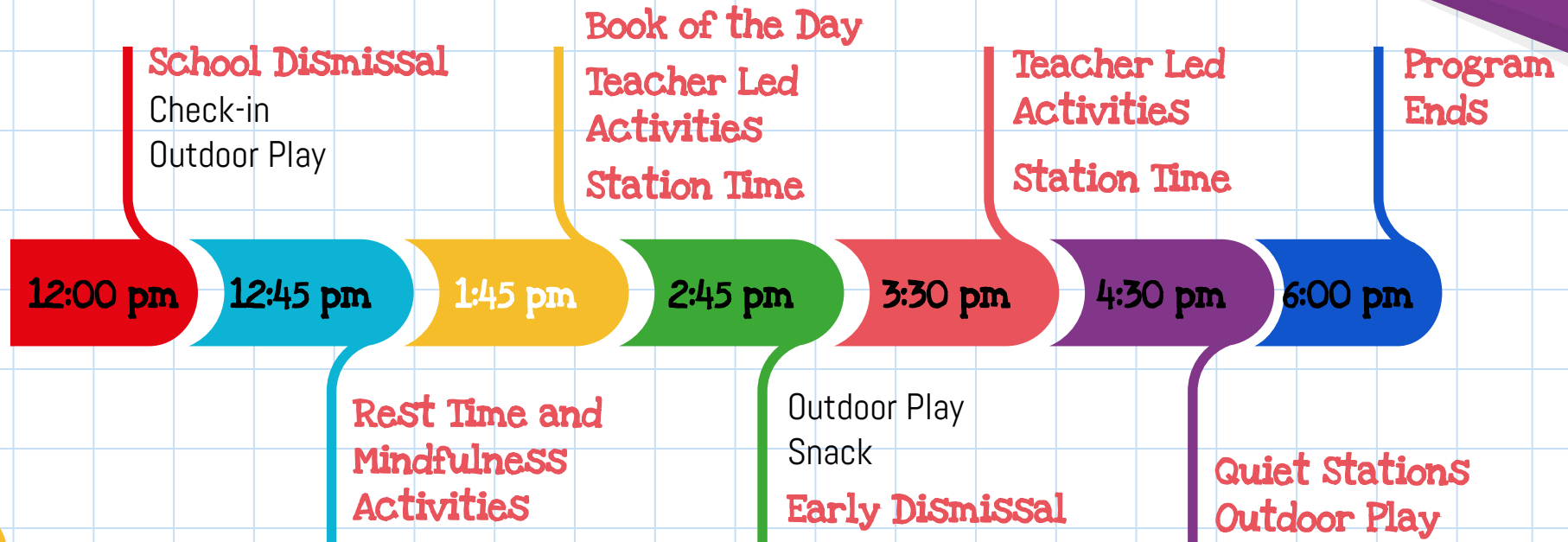
4

Academic
& Enrichment

- Constantly evolving in response to our student's interests
- Learning is beyond the pages of a book, achieved by experiencing and reflecting
- Interesting and unique methods and materials are incorporated
- Covers core school subjects as well as those not regularly covered in school
- Incorporates real world applications to develop context and skills
- Opportunities for team and self guided learning
- Recognizes the importance of having fun, being a child



Sample Schedule



We will maintain a child-appropriate and equitable schedule by ensuring the needs of each age group. An example of this is that some children may need more rest time, and some children may need more outdoor time. We will revise our schedules based on individual needs.



Teacher Led Activities



Hands-on projects which use play and exploration to approach:

- Literacy & writing
- STEM
- Art
- Movement
- Social Studies
- Social Emotional Learning





Gingerbread Loose at the Zoo

Ginger is on the run once again! Follow the clues they've left behind to find which animal exhibit they are hiding in at the Zoo.



Rainbow Abacus

Let's make a rainbow!

Step 1: Sort through the beads and choose 10 of each color.

Step 2: Put the beads on the matching pipe cleaner.

Step 3: Make 2 fluffy clouds

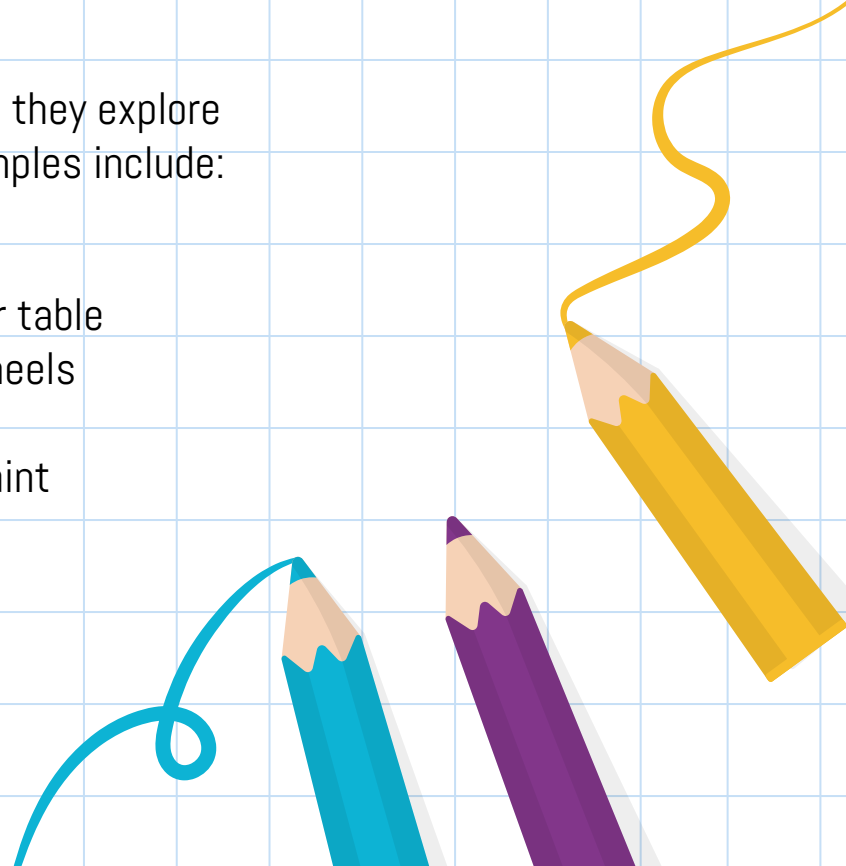
Step 4: Assemble



Station Time

Students have access to a multitude of activities and they explore based on their personal interests. Some station examples include:

- Building blocks - Keva, Magnetic Tiles, Legos
- Sensory - kinetic sand, water beads, sand/water table
- Dramatic Play - mini-kitchen/store, dolls, hot wheels
- Literacy - Books, ABC games, drawing robot
- Arts and Crafts - whiteboard, coloring sheets, paint
- Technology - Botley, Osmo





Check in/out

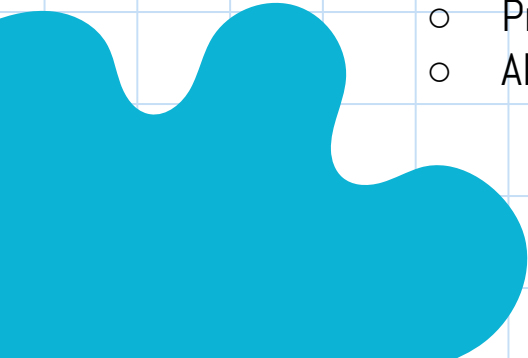
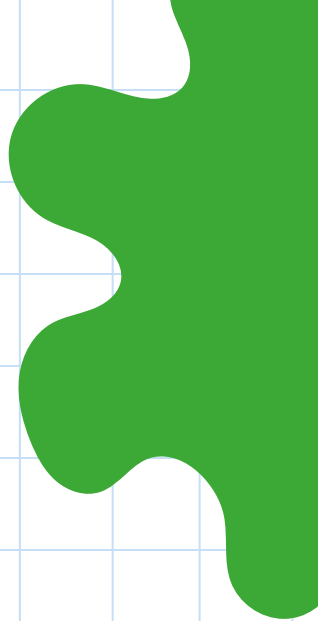
- We will pick up students from their classrooms
- We will use Brightwheel for check in/out students as well as parent communication
- Check out is *by* 2:45 pm or 6 pm
- Children with older siblings - we will coordinate 1 pickup in car line

Rest Time

- Optional rest time using mats - family to provide blanket
- Alternative quiet mindfulness activities


Snack

- Provided to students staying until 6 pm
- Allergies and dietary restrictions accommodated





Camps

- We will operate camps at the Lower Laurel Campus - all MPCSD students welcome to join
 - 8 am - 6 pm (with 3 pm pick up option)
 - Offered throughout the calendar year including teacher development days and school breaks
 - Similar schedule to TK day
 - TK and K students separate from 1-5th grade
 - Same after school care instructors
 - Separate registration from TK after school care
 - Summer Camp Registration
 - June 12 - TBD - day before school starts
 - Available online now - www.newtoncenter.org
- 

Registration for TK After School Care Opens on February 1, 2023

www.newtoncenter.org

- 2:45 pm pickup
 - \$6,475 - school year tuition
 - \$75 deposit + 10 payments of \$640
- 6:00 pm pickup
 - \$12,000 - school year tuition
 - \$150 deposit + 10 payments of \$1200
- Cancellations - 30 day notice for the 1st of a month
- Please register sooner rather than later - we will work to add spots as needed based on the enrollment, but if you wait until the week before school starts - likely no more spots.
- Applications for financial assistance will be available on February 1
 - If you have 4cs coverage - email office@newtoncenter.org to set up your enrollment.
- Note: 1-5th grade registration will open in mid-March

Questions?

Reach out to us at office@newtoncenter.org

Call us at 650-345-4043

